

1 **Sewage surveillance for the presence of SARS-CoV-2 genome as a useful wastewater**  
2 **based epidemiology (WBE) tracking tool in India**

3 **Sudipti Arora<sup>1\*</sup>, Aditi Nag<sup>2</sup>, Jasmine Sethi<sup>3</sup>, Jayana Rajvanshi<sup>4</sup>, Sonika Saxena<sup>5</sup>,**

4 **Sandeep K Shrivastava<sup>6</sup>, A. B. Gupta<sup>7</sup>**

5 <sup>1,2,3,4,5</sup> Dr. B. Lal Institute of Biotechnology, Jaipur (India)

6 <sup>6</sup>Centre for Innovation, Research & Development (CIRD), Dr. B. Lal Clinical Laboratory

7 Pvt. Ltd. Jaipur (India)

8 <sup>7</sup> Malaviya National Institute of Technology, Jaipur (India)

9 \* Corresponding Author- [sudiptiarora@gmail.com](mailto:sudiptiarora@gmail.com)

10 **Full Postal Address, Email & Affiliation of Authors**

11 <sup>1</sup>Sudipti Arora, Research Scientist, [sudiptiarora@gmail.com](mailto:sudiptiarora@gmail.com)

12 Dr. B. Lal Institute of Biotechnology, 6E, Malviya Industrial Area, Malviya Nagar, Jaipur-

13 302017, India

14 <sup>2</sup>Aditi Nag, Assistant Professor, [aditinag1@gmail.com](mailto:aditinag1@gmail.com)

15 Dr. B. Lal Institute of Biotechnology, 6E, Malviya Industrial Area, Malviya Nagar, Jaipur-

16 302017, India

17 <sup>3</sup>Jasmine Sethi, Research Assistant, [jasmine@blalbiotech.com](mailto:jasmine@blalbiotech.com)

18 Dr. B. Lal Institute of Biotechnology, 6E, Malviya Industrial Area, Malviya Nagar, Jaipur-

19 302017, India

20 <sup>4</sup>Jayana Rajvanshi, Research Assistant, [jayana@blalbiotech.com](mailto:jayana@blalbiotech.com)

21 Dr. B. Lal Institute of Biotechnology, 6E, Malviya Industrial Area, Malviya Nagar, Jaipur-

22 302017, India

23 <sup>5</sup>Sonika Saxena, Associate Professor, [Sonika@blalbiotech.com](mailto:Sonika@blalbiotech.com)

24 Dr. B. Lal Institute of Biotechnology, 6E, Malviya Industrial Area, Malviya Nagar, Jaipur-

25 302017, India

**NOTE: This preprint reports new research that has not been certified by peer review and should not be used to guide clinical practice.**

26 <sup>6</sup>Sandeep K Shrivastava, Senior Scientist, [ssk.cird1@gmail.com](mailto:ssk.cird1@gmail.com)

27 Centre for Innovation, Research & Development (CIRD), Dr. B. Lal Clinical Laboratory Pvt.  
28 Ltd., Jaipur (India)

29 <sup>7</sup>A. B. Gupta, Professor, [abgupta.ce@mnit.ac.in](mailto:abgupta.ce@mnit.ac.in)

30 Malaviya National Institute of Technology Jaipur (India)

### 31 **Abstract**

32 The infection with SARS-CoV-2 is reported to be accompanied by the shedding of the virus  
33 in stool samples of infected patients. Earlier reports have suggested that COVID-19 agents  
34 can be present in the fecal and sewage samples and thus it can be a good indication of the  
35 pandemic extent in a community. However, no such studies have been reported in the Indian  
36 context so far. Since, several factors like local population physiology, the climatic conditions,  
37 sewage composition, and processing of samples could possibly affect the detection of the  
38 viral genome, it becomes absolutely necessary to check for the presence of the SARS-CoV-2  
39 in the wastewater samples from wastewater treatment plants (WWTPs) serving different  
40 localities of Jaipur city, which has been under red zone (pandemic hotspots) since early April  
41 2020. Samples from different local municipal WWTPs and hospital wastewater samples were  
42 collected and wastewater based epidemiology (WBE) studies for the presence of SARS-CoV-  
43 2 were carried out using the RT-PCR technique to confirm the presence of different COVID-  
44 19 target genes namely S gene, E gene, ORF1ab gene, RdRp gene and N gene in the viral  
45 load of wastewater samples. In the present study, the untreated wastewater samples from the  
46 municipal WWTPs and hospital wastewater samples showed the presence of SARS-CoV-2  
47 viral genome, which was correlated with the increased number of COVID-19 positive  
48 patients from the concerned areas, as per reported in the publically available health data. This  
49 is the first study that investigated the presence of SARS-CoV-2 viral genome in wastewater,

50 at higher ambient temperature (above 40°C), further validating WBE as a potential tool in  
51 predicting and mitigating outbreaks.

52 **Keywords:** COVID-19, Public health data, RT-PCR based detection, SARS-CoV-2,  
53 Wastewater epidemiology

#### 54 **Highlights**

- 55 ● The study reports detection of SARS-CoV-2 in sewage in India.
- 56 ● The presence of SARS-CoV-2 was confirmed by RT-PCR.
- 57 ● The presence of viral genome was detected at high ambient temperatures of 40-45<sup>0</sup> C.
- 58 ● Corroborates trends in the WWTPs showing viral genome with public health data.
- 59 ● Treated effluent from WWTPs appears safe for reuse with low public health concern.

60

#### 61 **1. Introduction**

62 Coronavirus can be considered as a paradigm of the phenomenon involving complex  
63 dynamics of animals, humans and environments and in the last 18 years, it has caused three  
64 new alarming diseases: severe acute respiratory syndrome (SARS), Middle East respiratory  
65 syndrome (MERS), and the current coronavirus disease 2019 (COVID-19) (WHO, 2020a).  
66 The Outbreak of zoonotic coronavirus in humans was first reported in Wuhan, China in 2019  
67 as a pneumonia-like ailment caused by a hitherto uncharacterized etiologic agent (Casanova,  
68 et al., 2020). The Coronavirus study group of the International Committee of taxonomy of  
69 viruses later classified this zoonotic virus as SARS-CoV-2 based on the features it exhibited.  
70 (WHO, 2020b). Researchers classified this zoonotic agent into the Coronaviridae family on  
71 the basis of its genetic structure and crown-like (or halo) structures present on its envelope  
72 glycoprotein and characteristic features of chemistry and replication (Tyrrell DAJ & Myint  
73 SH, 1996). The affliction of this single-stranded positive-sense RNA virus shows varying  
74 symptoms in individuals depending upon their immune system. According to the data  
75 compiled by WHO, some of the commonly reported symptoms include fever, dry cough,

76 tiredness and in some cases may also manifest in aches and pains, nasal congestion, sore  
77 throat or diarrhea, conjunctivitis, headache, loss of taste or smell, a rash on the skin, or  
78 discoloration of fingers or toes. Serious symptoms reported include difficulty breathing or  
79 shortness of breath, chest pain or pressure, loss of speech or movement (WHO 2020c).

80         The novel strain of coronavirus has evolved after mutations in the previously existing  
81 strains. It has been reported that animals played a key role in spreading coronaviruses in  
82 humans until recently. But, the mutations, which led to the evolution of SARS-CoV-2, have  
83 equipped it with the ability to transmit directly from one human to another (Chan et al.,  
84 2020). COVID-19 is reported to transmit even through the droplets from an infected person's  
85 sneeze or even breath (WHO2020b, Chan et al., 2020). Both viable SARS-CoV-2 and viral  
86 RNA are shed in bodily excreta, including saliva, sputum, and feces, which are subsequently  
87 found in wastewater (Wu et al., 2020a). It is believed that the major transmission route of this  
88 virus is inhalation via person-to-person and aerosol/droplet transmission or through fomite,  
89 and close contact. At present, COVID-19 is responsible for a rapidly expanding global  
90 epidemic with tens of thousands of cases and thousands of deaths (Heymann and Shindo,  
91 2020). The potential fecal-oral transmission was recently highlighted by Yeo et al., (2020). It  
92 is therefore possible that the virus may be released with wastewater and contaminates other  
93 water bodies (surface, sea, and groundwater), generating aerosols. Sewage from hospitals,  
94 especially infectious disease units, may contain the epidemic virus, thus requiring efficient  
95 disinfection before discharge into natural waters. Currently, available evidence indicates the  
96 need for a better understanding of the role of wastewater as potential sources of  
97 epidemiological data and as a factor in public health risk.

98         Environmental Surveillance is a tool used to monitor the extent and duration of the  
99 spread of the virus in specific populations. It gives a measure of contaminants and also  
100 provides warning of possible threats emerging in that particular confinement. These

101 monitoring tools have already been successfully implemented for viruses such as poliovirus  
102 and the Aichi virus, in the past. The study of wastewater based epidemiology has been  
103 proven successful in other cases as well such as Influenza A (H1N1) epidemic 2009 (Heijnen  
104 & Medema, 2011), Norovirus, Hepatitis A virus, Hepatitis E virus, Adenovirus, Astrovirus  
105 and Rotavirus (Hellmér et al., 2014) in determining the viral concentration in the sewage  
106 sample both before and after the onset of the symptoms, which have aided in strategies that  
107 resulted in their elimination. This technique is in line with the wastewater based  
108 epidemiology (WBE) concept. WBE is a reliable surveillance model for identifying global  
109 hotspots of COVID-19 (Núñez-Delgado, A. et al., 2020). Crucially, according to a recent  
110 study, SARS-CoV-2 RNA was detected in samples of sewage before any case was reported,  
111 suggesting that virus monitoring could be feasible before cases are documented through the  
112 health surveillance system (Orive, G., et al., 2020).

113 Human CoVs, including SARS-CoV and MERS-CoV, are known to cause  
114 gastrointestinal symptoms as well as respiratory symptoms. In fact, previous studies  
115 demonstrated that these viruses replicate in the gastrointestinal tract (Leung et al., 2003; Zhou  
116 et al., 2017). Recent reports revealed that 2–10% of COVID-19 patients had gastrointestinal  
117 symptoms, including diarrhea (Chen et al., 2020; Wang et al., 2020a). Although the exact  
118 mechanism of COVID-19-induced gastrointestinal symptoms largely remains unknown, a  
119 recent study reported that SARS-CoV-2 infects gastrointestinal glandular epithelial cells (Wu  
120 et al., 2020b). With diarrhea being reported as a frequent symptom in the patient (Kitajima, et  
121 al., 2020; D'Amico, et al., 2020), the shedding of SAR-CoV-2 RNA through feces has been  
122 reported in many countries like the Netherlands (Medema et al., 2020), Wuhan, China (Chen  
123 et al., 2020; Hindson, 2020). A study conducted on the clinical samples collected from  
124 different hospitals in China reveals shedding of viral RNA through feces in a significant  
125 number of cases, implying the fecal route of transmission (Wang et al., 2020a). Some clinical

126 studies reported prolonged fecal shedding of SARS-CoV-2 RNA for up to seven weeks after  
127 the first symptom onset (Wu et al., 2020a). Another study reported that viral RNA could be  
128 detected in the feces of 81.8% cases even with a negative throat swab result (Ling et al.,  
129 2020). Recent reports implied that significant proportions (17.9–30.8%) of infected  
130 individuals are asymptomatic (Wu, et al., 2020b; Tang et al., 2020). It will be easier to survey  
131 regions for viral infections, especially in the asymptomatic cases of COVID-19,  
132 comprehensively and in real-time for the reason that the affected individuals start shedding  
133 the viral RNA genomes in their feces. This tool will serve as an efficient and sensitive  
134 monitoring tool to measure virus levels in the hotspot populations and provide early warning  
135 signs before a potential epidemic in the future. The current approach analyzes wastewater  
136 samples to determine the presence of infected individuals and estimate the number of cases.  
137 As of May 7, 2020, India counted 52,952 cases out of which 35, 902 were active and it  
138 showed a tremendous increase by 20.56% and 28.39% in total and active cases, respectively,  
139 within a month. As of June 7, 2020, this number was reported to be 257,486 total and  
140 126,431 active cases, respectively (official data from John Hopkins University, 2020). The  
141 data from the sewage supports communities with trend analysis that can determine the  
142 pandemic hotspots of COVID-19. This further can help researchers to generate early warning  
143 and thus help officials to take rapid action regarding the containment or re-emergence of new  
144 outbreaks in a population.

145 In this context, the present study was planned to achieve the evidence for detection of  
146 SARS-CoV-2 RNA samples in Municipal WWTPs for untreated and treated wastewater  
147 samples, and hospital sewage samples around Jaipur city, and determine the correlations  
148 between the positive results for sewage samples from WWTPs with the public health data, as  
149 officially reported in the daily newspaper, of positive patients around the area. To date, there  
150 have been no reports of detection of SARS- CoV-2 in wastewater in India. The present study

151 provides the first reported evidence of the presence of SARS-CoV-2 RNA in sewage samples  
152 of Jaipur, Rajasthan (India) and these findings demonstrate the applicability of WBE or  
153 sewage surveillance as an early indicator of persistence of the virus in the community and the  
154 risk associated with wastewater handling. The work also draws attention to the current  
155 wastewater treatment system being used in WWTPs, and the efficacy of sodium hypochlorite  
156 or other chlorine compounds being used by hospital authorities as a potent disinfecting agent,  
157 to inactivate or attenuate viruses.

## 158 **2. Experimental Methodology**

### 159 **2.1. Wastewater sampling**

160 Wastewater samples were collected from different units of six municipal wastewater  
161 treatment plants (WWTPs) installed at different locations of Jaipur city and wastewater  
162 samples from two hospitals, which are the major treatment centers for COVID-19 patients.  
163 The location of 8 sites (six municipal WWTPS and 2 Hospitals) is shown in Figure 1. The  
164 samples were taken between 3<sup>rd</sup> May 2020 and 14<sup>th</sup> June 2020. All the samples were  
165 collected in sterile bottles and transported to the Environmental Biotechnology laboratory at  
166 Dr. B. Lal Institute of Biotechnology, Jaipur for further investigations. Sample collection was  
167 carried out by taking appropriate precautions with the use of standard personal protective  
168 equipment (PPE). Table 1 highlights the comprehensive list of all the sample locations along  
169 with dates, types of samples collected, and current treatment technology.

### 170 **2.2. Sample Pre-Processing**

171 Samples were processed using two different methods based on previously published  
172 protocols (La Rosa, et al., 2020, Biobot Analytics). The two methods were tested and  
173 standardized for sample pre-processing in the laboratory. In the first method, (Method A),  
174 sample processing was carried out in two different steps involving the inactivation of virus  
175 particles (which might be present in the wastewater sample), followed by the concentration of

176 the virus by adsorption. Method A began with inactivation of the virus by transferring the  
177 samples to 50 ml Tarsons falcon (code 546041) in a biosafety cabinet (BSL2), followed by  
178 70% ethanol spray over the surface of the falcon tubes and UV light exposure for 30 minutes  
179 for surface sterilization. After UV exposure, the samples were transferred to the water bath at  
180 60°C and kept incubated for 90 minutes for heat inactivation of the virus. After the  
181 inactivation of the coronavirus, the samples were brought to room temperature and filtered  
182 through a 0.45 µm membrane using a vacuum filter assembly. The filtrate of each respective  
183 sample was transferred to a fresh 50 ml falcon containing 0.9 g sodium chloride (NaCl) and 4  
184 g polyethylene glycol (PEG). The contents were dissolved by gentle manual mixing. The  
185 samples containing PEG and NaCl were then centrifuged at 4 °C for 30 minutes at 7000 rpm.  
186 The pellet obtained was further re-suspended in 1X Phosphate Buffer Saline (PBS). In the  
187 second method, which is a direct method (Method B), for detection of SARS-CoV-2 in the  
188 wastewater sample includes UV treatment of the sample for 30 minutes, followed by  
189 dispensing 1 ml sample in each 1.7 ml centrifuge tube. A spin on 7,000 rpm for 15 minutes  
190 was given to each tube containing the samples. The supernatant was collected in a separate  
191 tube and the same process was repeated. The supernatant thus obtained was then processed  
192 for RNA extraction.

### 193 **2.3. RNA extraction**

194 RNA extraction and subsequent steps of detection were done at Dr. B. Lal Clinical  
195 Laboratory Pvt. Ltd, Jaipur (which is authorized by ICMR to conduct COVID-19 testing in  
196 humans). For the extraction of viral RNA, FDA and ICMR approved Allplex™ 2019-nCoV  
197 Assay kit (cat# RP10244Y RP10243X) was used. 10 µl of proteinase K and 200 µl of lysis  
198 buffer were added to 200 µl of the sample into a 1.5 ml centrifuge tube followed by vortex  
199 mixing and incubation at 56°C for 15 minutes in a heating block. 250 µl of ethanol was added  
200 to the sample and mixed by pulse vortexing for 15 seconds. The mixture was then transferred



201 to the spin column and centrifuged at 10,000 g followed by sequential washing with three  
202 wash buffers provided in the kit followed by centrifugation at 10,000g for 1 minute at each  
203 washing step. After complete drying of the spin column, the RNA was eluted out using a 50-  
204 100 µl elution buffer followed by centrifugation at 12,000 g for 1 minute.

#### 205 **2.4. Real Time (RT)-PCR analysis**

206 Recently published Real Time-PCR assays were used for the detection of SARS- CoV-2 in  
207 wastewater samples (Ahmed et al., 2020; Corman et al., 2020). RT-PCR assays were  
208 performed using FDA approved Allplex™ 2019-nCoV Assay kit (cat# RP10244Y,  
209 RP10243X) or TaqPath™ COVID-19 Combo Kit (Cat#A47814) for the qualitative detection  
210 of SARS-CoV-2 genomic RNA in the sample on BioRAD CFX96 IVA Real-Time PCR and  
211 Applied Biosystems™ QuantStudio™ 5, respectively. The mastermix for Allplex™ 2019-  
212 nCoV Assay kit was prepared using the kit content which was composed of amplification and  
213 detection reagent, enzyme mix for one-time RT-PCR, buffer containing dNTPs, buffer for  
214 one-step PCR and RNase free water. Each PCR tube contained 8 µl RNA sample, 5µl 2019-  
215 nCoV MOM, 5 µl Real-time One-step buffer and 2 µl Real-time One-step enzyme and the  
216 final volume of the mixture was adjusted to 25µl using RNase free water. A list of different  
217 genes and fluorophores used for detection is given in Table 2. Thermal cycling reactions were  
218 performed at 50°C for 20 minutes, 95 °C for 15 minutes, 44 cycles at 94 °C for 15 seconds,  
219 and 45 cycles at 58 °C for 30 seconds, in a thermal cycler. For each run, a set of positive and  
220 negative controls were included. For the mastermix for TaqPath™ COVID-19 Combo Kit,  
221 each PCR tube contained 5µl RNA sample, 1.25 µl COVID-19 Real-Time PCR Assay  
222 Multiplex and 6.25µl TaqPath™ 1-Step Multiplex Master Mix (No ROX™) (4X) and the  
223 final volume of the mixture was adjusted to 25µl using RNase free water. Thermal cycling  
224 reactions began with UNG incubation at 25°C for 2 minutes, followed by reverse  
225 transcription at 53°C for 10 minutes, activation at 95°C for 2 minutes and 40 cycles of

226 denaturation and annealing/ extension at 95°C for 3 seconds and 60°C for 30 seconds,  
227 respectively.

### 228 **3. Results**

#### 229 **3.1. Detection of SARS-CoV-2 genome in wastewater samples**

230 Six municipal WWTPs were selected from the Jaipur city, as shown in Table 1. The RT-PCR  
231 based detection was done in combinations of the following: one non-structural gene ORF1ab,  
232 any two of the structural genes like S (spike) or E (envelope) along with a third structural N  
233 (nucleocapsid) gene. COVID-19 RdRp (RNA dependent Replicase) was also used as a target  
234 to detect the presence of the COVID-19 genome with these structural genes. All the reactions  
235 were done with proper internal and positive controls followed by data analysis and result  
236 interpretation which is shown in Figure 2. A Ct value of <40 with Allplex kit and Ct values  
237 of <35 and <37 (for N gene and ORF1ab, respectively) with the TaqPath kit was considered  
238 to be valid and overall, if a sample showed two out of three genes with valid Ct values were  
239 considered to be overall positive for the presence of intact viral genome. The results of the  
240 study showed the presence of at least two target genes in untreated wastewater samples from  
241 site 5 and site 6 (as seen in Figure 3e & 3f), thus confirming the presence of SARS-CoV-2  
242 genome in these samples. However, the other four wastewater samples tested negative for the  
243 detectable presence of the viral genome (Figure 3 a-d). The study tried to establish the  
244 correlations between the positively tested wastewater samples to the officially published  
245 public health data, of positive patients' cases near the WWTPs during the study period. It was  
246 found that areas served by the WWTPs that showed positive results, reported a continuous  
247 increase in confirmed positive patients, soon after the first sampling. These observations were  
248 in accordance with the previous studies (Medema et al., 2020; Ahmed et al., 2020). The  
249 Ramniwas garden WWTP (Site 5) is currently serving the walled city area of Jaipur that  
250 includes the major hotspot of the city, the Ramganj area, having maximum reported cases.

251 Our study reveals that a significant increase in the numbers of positive tested cases was  
252 reported within 6-14 days of our first date of sampling (May 4<sup>th</sup>, 2020). This increase was  
253 even more significant owing to a particular hotspot area of Jaipur city (Central jail), which  
254 showed a surge in the number of positive cases within six days of testing of the sample from  
255 site 5 (WWTP) that confirmed the presence of the virus.

256 Additionally, the untreated wastewater sample from Brahmpuri WWTP (site 6), the  
257 first sample (collected on 15<sup>th</sup> May 2020) was interpreted negatively as it did not show the  
258 presence of virus, which correlated with the corresponding low number of positive cases  
259 around the area. However during sampling in the subsequent week, the Brahmpuri WWTP  
260 showed positive detection of the viral genome, and this was well correlated by a sudden surge  
261 in COVID-19 cases up to fivefold within the next six days of the detection. Previous reports  
262 have mentioned that the presence of the viral genome can be as early as 14 days of actual  
263 positive testing (Bernard Stoecklin et al., 2020). This difference in the gap of detection can be  
264 due to the following reasons: Firstly, in contrast to the previous studies, our window of  
265 testing started much later, when a complete lockdown was underway and the corona spread  
266 had already reached the third phase. Secondly, we also noticed that after 15<sup>th</sup> May 2020, the  
267 numbers of COVID-19 positive cases increased and the gap between our detection and surge  
268 of positive tested cases of an area decreased from 14 to even 6 days. We acknowledge that in  
269 each of these areas where samples were tested positive, the number of officially reported  
270 positive cases by the city was only in double digits. This low number of cases reported by the  
271 city can be attributed to a very low number of COVID-19 tests done per area per day by the  
272 city. This data has reinforced our confidence in proposing that WWTPs can indeed serve as  
273 good checkpoints in predicting the surge in COVID-19 cases well ahead of the individual  
274 testing. This is critical as even a delay of three days in COVID-19 detection can lead to a  
275 potential spread to thousands of people (Mallapaty, 2020).

276 WBE serves as an important tool to trace the circulation of viruses in a community,  
277 providing opportunities to estimate their prevalence, and geographic distribution (Sinclair et  
278 al., 2008). Wastewater systems offer a practical approach to detect viruses excreted in the  
279 feces of an entire region. Using this approach it becomes possible to monitor the  
280 epidemiology of virus infections even if they are not evident by clinical surveillance,  
281 especially because traditional epidemiological approaches may be limited by the  
282 asymptomatic nature of viral infections and under diagnosis of clinical cases. SARS-CoV-2 is  
283 known to cause symptomatic or pauci-symptomatic infections (Nicastri et al., 2020), making  
284 it difficult to determine the actual degree of viral circulation in a community and in making  
285 comparisons among different countries that have different clinical diagnostic testing  
286 capabilities with even different methodology or assays. Meanwhile, wastewater surveillance  
287 could provide an unbiased method of evaluating the spread of infections in different areas,  
288 even where resources for clinical diagnosis are limited and when reporting systems are  
289 unavailable or not feasible, such as in many developing countries (Daughton, 2020). This  
290 approach allows comparisons between different geographic regions and assessments of the  
291 infected patients in an area. Our study also highlighted the importance of the WBE tool by  
292 monitoring viral RNA in wastewater to assess disease prevalence and spread in defined  
293 populations, which may prove beneficial for predicting COVID-19 related public health  
294 policy.

### 295 3.2. Validation of SARS-CoV-2 genome in wastewater samples by two different 296 protocols

297 There has been growing evidence of the presence of the SARS-CoV-2 genome in sewage  
298 samples, but the major challenge in the detection is the lack of an optimized and standardized  
299 protocol (Bivins et al., 2020). As there are several reports for viral RNA isolation to check for  
300 the genomic presence of the COVID-19 causing virus in human fecal samples and sewage

301 samples (Chen et al., 2020; Hindson, 2020; Wang et al., 2020a), the present study tried to  
302 establish a protocol, which would be robust under local conditions. As mentioned in section  
303 2.2, both methods (A and B) were standardized to achieve the detection of viral RNA in the  
304 sample. In the first method (Method A), attempts were made to standardize a protocol for the  
305 samples with low expected viral load. In this protocol, as mentioned in Section 2.2, the  
306 samples were subjected to heat inactivation of virus particles. After the inactivation, the  
307 COVID-19 viral particles present in the sample were concentrated by filtration and  
308 adsorption onto PEG into 1 ml of final volume. This ensured an increased concentration of  
309 viral particles present per ml. Secondly, in method B, the study was able to establish a direct  
310 isolation method from the wastewater samples. This method was standardized keeping in  
311 mind the untreated wastewater samples and fecal samples where the probability of striking a  
312 heavy load of viral particles existed. In the direct method, the samples were subjected to a  
313 centrifugation step to remove larger solid particles and debris and directly processed for the  
314 RNA extraction and RT-PCR detection assay. The results of the study showed that the  
315 samples could be similarly tested for the detection of viral genomic RNA regardless of the  
316 pre-processing and concentration differences due to the two protocols. Thus, the samples  
317 from a particular site (processed by method A or B) tested either positive or negative  
318 regardless of the methods used and that the testing results were linked to the area, rather than  
319 the sample processing method.

320 These observations consolidated the results from previous studies that a regular  
321 testing of samples from WWTPs can potentially indicate the presence of coronavirus patients  
322 in the community. Additionally, the present study would try to establish a standardized  
323 protocol & methodology in the current scenario. The study is in accordance with the recent  
324 finding that wastewater-based epidemiology (WBE) can be used to detect and manage  
325 infectious disease transmission in communities (Nghiem, L. D., 2020). As many research

326 groups across the globe are mobilizing to monitor wastewater for SARS-CoV-2 RNA for this  
327 purpose, it is necessary to validate methodologies, and data sharing to maximize the yield of  
328 WBE. Efficient harmonization of sampling, quality control, analysis methods and  
329 publications will help to ensure a high-quality evaluation of WBE (Bivins et al., 2020).

### 330 **3.3. Detection of SARS-CoV-2 genome at high ambient temperatures during** 331 **summers**

332 As mentioned previously, wastewater treatment plants cater to tens of thousands of people in  
333 a given community. It has been previously reported that the virus can stay for very long  
334 periods in water and wastewater but at the same time, there are other studies that have  
335 reported that high temperatures can negatively affect the viral persistence outside the human  
336 body (La Rosa et al., 2020). In India especially in Rajasthan, however, where the  
337 temperatures can go as high as 45-50 °C in May-June, the study aimed to check if the WWTP  
338 samples could still have the presence of SARS-CoV-2 genome at higher temperature. The  
339 idea was to check if WWTPs in India could act as a checkpoint and alert against the COVID-  
340 19 outbreaks. Therefore, the samples were collected in the months of May and June 2020,  
341 where the ambient temperatures in the city were high up to 45°C. The presence of the viral  
342 genome was detected at a high ambient temperature of 45°C, which showed that WWTP  
343 samples can serve as a checkpoint where the presence of the COVID-19 genome can be  
344 checked. These results correlated with a recent study that predicted the linear upward  
345 (increasing) trend of positive patients been found in most states of India with increasing  
346 temperature and humidity (Goswami et al., 2020, Méndez-Arriaga, F. (2020).

### 347 **3.4. Efficacy of Current Treatment systems at WWTPs against SARS-CoV-2**

348 In India and other developing countries, the effluents from wastewater treatment plants find  
349 their way to the nearby gardens and agricultural areas for irrigation reuse. In this context, it  
350 becomes necessary to validate the presence of the viral genome in the treated effluent

351 samples from WWTPs. It is highly likely that this wastewater may be originating from areas  
352 under coronavirus spread. It has been reported previously that the virus can persist with its  
353 active state (La Rosa et al., 2020) and this could pose a risk to the safety of people involved  
354 in the irrigation and public health in general. The contamination due to this wastewater may  
355 also lead to a new chain of viral spread, especially across the rural areas of India where  
356 medical facilities are limited. So, the present study also tried to investigate the efficacy of the  
357 current wastewater treatment technologies against COVID-19. Interestingly, the results of the  
358 study (as shown in Figure 4) revealed that all the treated wastewater samples showed  
359 negative results for the presence of viral RNA from all the WWTPs. From the present study,  
360 it was inferred that even in those WWTPs which tested positive for untreated wastewater; the  
361 treated wastewater had no detectable viral genome. This is important to mention that the  
362 positive site 5 (Ramniwas garden) currently uses Moving bed biofilm reactor (MBBR)  
363 technology, and site 6 (Brahmpuri) used Sequencing batch Reactor (SBR) technology, and  
364 the results conclude that the different wastewater treatments technologies being used are  
365 currently effective and able to decrease the viral particles below the detection limit, thus  
366 confirming the efficacy of treatment technology in attenuation of the virus, concluding that  
367 there is little risk to public health with the reuse of treated water for irrigation.

### 368 **3.5. Efficacy of current sanitization practices (hypochlorite and other chlorine agents as** 369 **disinfecting agent) in Hospitals**

370 The present study also investigated decontamination and sanitization practices used in the  
371 hospitals. This is a critical aspect as although the suspected patients are quarantined from the  
372 general public, the waste they generate can potentially cause contamination to the external  
373 water resources after being discharged outside. The present study tried to investigate if there  
374 is any presence of the viral genomic RNA in the wastewater samples of two such local  
375 hospitals where patients with positive COVID-19 were being treated on campus. The results

376 showed a discrepancy between the samples processed under the two different conditions, as  
377 highlighted in Figure 2 (coded yellow). The untreated wastewater samples of site 7, when  
378 processed by method A (using heat-inactivation and concentration methods) tested negative  
379 for the presence of viral genome. These results suggested that the heavy use of hypochlorite  
380 and detergent solutions used in current treatment systems in hospitals for sanitizing are  
381 effective in inactivating the viral genome and hence showed negative results (Wang et al.,  
382 2020b). The sanitization treatment seems to be successful in the de-stabilization of the viral  
383 coat in the case of enveloped viruses like COVID-19 that leads to faster degradation of the  
384 viral genomic RNA to below detection limits. Additionally, to further confirm our  
385 hypothesis, samples from one of the hospitals (site 7) was collected on 8<sup>th</sup> June at 4°C and  
386 processed by direct protocol (Method B) and showed positive results (Figure 5) for the viral  
387 RNA. This confirms that this degradation was stalled by using lower temperatures for  
388 stabilizing coronavirus, as reported by La Rosa et al., 2020. The sample from site 7 was again  
389 collected on 12<sup>th</sup> June, at ambient temperature and processed by Method B, interestingly gave  
390 negative results. As we know, the viral genome is possibly detected by the RT-PCR based  
391 tests, being sensitive enough to pick up even a single copy of the genome, this further  
392 confirmed our hypothesis. Thus, it highly likely to report that under the normal physiological  
393 conditions, the sanitization practices being followed by hospitals are able to removing the  
394 viral particles of COVID-19, and are safe to be reused or discharged in the public domain.  
395 The wastewater samples from the second hospital which we tested (Site 8), showed  
396 consistently negative results.

#### 397 **4. Discussions**

398 Wastewater epidemiology is a useful study tool in monitoring any infectious disease spread  
399 and its community level dynamics in principle (Ahmed et al., 2020; Sims & Kasprzyk-  
400 Hordern, 2020). A previous study conducted in Paris demonstrated the detection of the viral



401 genome before the exponential phase of the epidemic (Wurtzer et al., 2020), and another  
402 study by Randazzo et al., 2020 indicated that the SARS-CoV-2 can be detected weeks before  
403 the first confirmed case. The present study reports the first evidence of SARS-CoV-2 genome  
404 in wastewater samples from India, under higher ambient temperature conditions. Out of the  
405 municipal WWTPs that were selected for the current study, wastewater samples from two  
406 WWTPs (site 5 and 6) showed positive viral detection. We wondered if this pattern held any  
407 significance and if it could be related to the status of the positive tested cases in the respective  
408 area. We thus surveyed the officially published daily public health data of the total and new  
409 COVID-19 positive cases from the areas linked with our test WWTPs. The results of our  
410 study predicted that samples collected early from 4<sup>th</sup> May to 15<sup>th</sup> May, 2020, were tested  
411 positive, 10-14 days preceding a large jump in the number of reported corona positive cases  
412 in the respective area. However, during the late sampling (14<sup>th</sup> May to 12<sup>th</sup> June, 2020), this  
413 gap decreased from 14 days to 6 days, between our detection and the surge of numbers in  
414 positive cases. One of the reasons for this contrasting trend might be the window of our  
415 observation. While the previous studies were done during the initial phases of disease spread  
416 along with the increasing imposition of restricted interactions in the respective countries, we  
417 have investigated the samples along with the progressive relaxation in the lockdown of the  
418 city. This is an interesting observation, and is reported for the first time. We thus hypothesize  
419 that this reduction in the gap could be because of a rapid spread of disease along with the  
420 accompanying relaxations in the lockdown in the city by the local government. Since, during  
421 a rapidly spreading pandemic, every day can potentially account for spread to tens of  
422 thousands of more people, we infer that this study highlights that a warning obtained even six  
423 days ahead, could be crucial in taking relevant steps against the outbreak.

424           The early detection of SARS-CoV-2 RNA in wastewater could have alerted about the  
425 imminent danger, giving a valuable time to the managers to coordinate and implement actions

426 to curb the spread of the disease. Therefore, our outcomes support the proposition that WBE  
427 could be used as an early warning tool to monitor the status of COVID-19 infection within a  
428 community. Additionally, we believe that this environmental surveillance could be used as an  
429 instrument to drive the right decisions to reduce the risk of lifting restrictions too early. For  
430 instance, a key question is how to reduce the risk of a “second wave” and/or recurring local  
431 outbreaks. Massive population tests are the first choice, but in their absence, wastewater  
432 monitoring of SARS-CoV-2 RNA can give a reliable picture of the current situation.

433 The present study reports the evident presence of viral genome in untreated  
434 wastewater even during high ambient temperatures of 40-45°C. There have been  
435 epidemiology based studies outside India on COVID-19 virus which were done at colder  
436 seasons and quite low ambient temperatures (Bernard Stoecklin et al., 2020; Medema et al.,  
437 2020; Sims & Kasprzyk-Hordern, 2020). The detection of the COVID-19 genome in  
438 wastewater by these studies can be easily explained as the low range of temperature is  
439 reported to increase the duration of viral persistence (La Rosa et al., 2020). Our study also  
440 intended to investigate the feasibility of using the WBE approach yearlong for a country like  
441 India where temperatures can go as high as 50 °C. It is worth noting that, there are still no  
442 studies that report the viral behavior during high temperatures. This is the first study to check  
443 untreated and treated wastewater samples during the months of May-June, 2020 which are the  
444 hottest months in the summer especially in Jaipur (India). Thus, it is proposed that the testing  
445 of wastewater seems to be a useful approach in early detection and studying infection spread  
446 dynamics of the community population throughout the year.

447 In order to detect the presence of the viral genome, we have standardized two  
448 methods of sample processing. Firstly, Method A uses filtration and PEG adsorption method  
449 to increase the concentration of the SARS-CoV-2 virus before RNA extraction. This process  
450 was developed with the purpose of investigating probable samples with diluted loads.

451 Secondly, Method B directly processes the sample for RNA extraction after removal of large  
452 suspended solids by a simple centrifugation. The current study tried to standardize Method B  
453 for the samples where we might get a relatively higher load of viral genome. However, we  
454 observed that both methods were effective uniformly in the case of municipal wastewater  
455 samples (sites 1 to 6), and we could detect the presence of SARS-CoV-2 in a sample  
456 regardless of the method employed. Thus each method acted as an internal control of another  
457 for each sample tested by them.

458 The most common use of the treated effluents from the WWTPs, is irrigation and it is  
459 imperative to check if the treated wastewater from the WWTPs, especially from the ones  
460 serving local hospitals, is safe to be used by the public in general. We, therefore, tested for  
461 the presence of COVID-19 genome in the treated wastewater samples of domestic as well as  
462 local public and private hospitals. Our results showed that the probability of the presence of  
463 any detectable viral genome load was very less and that the water could be considered safe  
464 for public consumption by the current standards. Since the hospitals we used for sample  
465 collections were following the sanitization protocol guidelines given by the ministry of  
466 health, we could conclude that the sanitization guidelines are sufficient to curb the viral  
467 presence and prevent the spread of this virus to a great extent in the present scenario. These  
468 kinds of studies are equally important to keep in check the sanitization practices being  
469 followed by Hospitals and in generating the new standard and guidelines, if required. The  
470 future implications of the work may include understanding the WBE tool as an alert system  
471 for preventing outbreaks.

## 472 **5. Conclusions**

- 473 • This is the first study that reports the detection of SARS-CoV-2 in wastewater in India  
474 using RT-PCR assay for the detection of viral genome in wastewater.

- 475       • The study also highlights the need for WBE tools and surveillance as an alert system  
476       that provides population-level estimates of the burden of SARS-CoV-2 against future  
477       outbreaks.
- 478       • This approach can become the basis for further developing a useful warning system  
479       for the cities of India, where in-person testing may not be available.
- 480       • The findings of the present study confirmed the detection of COVID-19 genome at  
481       ambient temperature (above 40°C) and can prove to be a useful tracking tool in  
482       understanding the dynamic behavior of this pandemic's spread.
- 483       • The study highlights the efficacy of sodium hypochlorite or other chlorine compounds  
484       being used by hospital authorities as an effective disinfecting agent, to inactivate or  
485       attenuate viruses. However future studies would be required to further validate the  
486       virulence or infectivity of these viruses in wastewater samples.

487       **Credit authorship contribution statement**

488       **Sudipti Arora:** Conceptualization, Investigation, Resources, Sample collection, Manuscript  
489       Writing and editing, corresponding author

490       **Aditi Nag:** Experimental design, protocol standardization, Experimental conduction, Data  
491       analysis, Writing -original draft of manuscript, Investigation

492       **Jasmine Sethi:** Experimentation, Pre processing, Manuscript preparation

493       **Jayana Rajvanshi-** Sampling, Experimentation, RT- PCR testing

494       **Sonika Saxena:** Resources providing, Sample collection protocol standardization and  
495       supervision

496       **Sandeep K. Shrivastava-** Experimental design in COVID-19 detection

497       **A. B. Gupta-** Conceptualization, Motivation, Supervision, Data analysis, Resource providing  
498       and manuscript review

499       **Declaration of competing interest:**

500 The authors declare that they have no known competing financial interests or personal  
501 relationship that could have appeared to influence the work reported in this paper.

## 502 **Funding**

503 The present work was not funded by any external funding agency and all funds were incurred  
504 by the institute Dr. B. Lal Institute of Biotechnology, Jaipur.

## 505 **Acknowledgements**

506 The study group would like to acknowledge the constant support received from Dr. B. Lal  
507 Gupta (Director, Dr. B. Lal Institute of Biotechnology, Jaipur) and Dr. Aparna Datta for  
508 inspiring this research and providing daily motivations to work faster. The team further  
509 acknowledges the efforts made by Mr. Dinesh and Mr. Rajeev for assisting sample collection.  
510 We would like to mention the support received from Dr. Deepika Gupta in guiding us for RT-  
511 PCR testing, and acknowledge the support received from the officials and persons at WWTPs  
512 who assisted us in sample collection.

## 513 **References**

- 514 1. Ahmed, W., Angel, N., Edson, J., Bibby, K., Bivins, A., O'Brien, J. W., . . . Mueller, J. F.  
515 (2020). First confirmed detection of SARS-CoV-2 in untreated wastewater in Australia: A  
516 proof of concept for the wastewater surveillance of COVID-19 in the community. *Sci*  
517 *Total Environ*, 728, 138764. doi: 10.1016/j.scitotenv.2020.138764
- 518 2. Bernard Stoecklin, S., Rolland, P., Silue, Y., Mailles, A., Campese, C., Simondon, A., . . .  
519 Levy-Bruhl, D. (2020). First cases of coronavirus disease 2019 (COVID-19) in France:  
520 surveillance, investigations and control measures, January 2020. *Euro Surveill*, 25(6). doi:  
521 10.2807/1560-7917.es.2020.25.6.2000094
- 522 3. Biobot Analytics. Last Accessed: 15.06.2020 URL: <https://www.biobot.io/>

- 523 4. Bivins, A., North, D., Ahmad, A., Ahmed, W., Alm, E., Been, F., ...&Buttiglieri, G.  
524 (2020). Wastewater-Based Epidemiology: Global Collaborative to Maximize  
525 Contributions in the Fight Against COVID-19.
- 526 5. Casanova, J. L., Su, H. C., & Effort, C. H. G. (2020). A global effort to define the human  
527 genetics of protective immunity to SARS-CoV-2  
528 infection. *Cell*. doi: <https://doi.org/10.1016/j.cell.2020.05.016>
- 529 6. Chan, J. F., Yuan, S., Kok, K. H., To, K. K., Chu, H., Yang, J., . . . Yuen, K. Y. (2020). A  
530 familial cluster of pneumonia associated with the 2019 novel coronavirus indicating  
531 person-to-person transmission: a study of a family cluster. *Lancet*, 395(10223), 514-523.  
532 doi: 10.1016/s0140-6736(20)30154-9
- 533 7. Chen, Y., Chen, L., Deng, Q., Zhang, G., Wu, K., Ni, L., . . . Cheng, Z. (2020). The  
534 presence of SARS-CoV-2 RNA in the feces of COVID-19 patients. *Journal of Medical  
535 Virology*, 92(7), 833-840. doi: 10.1002/jmv.25825
- 536 8. Corman, V. M., Landt, O., Kaiser, M., Molenkamp, R., Meijer, A., Chu, D. K., . .  
537 .Drosten, C. (2020). Detection of 2019 novel coronavirus (2019-nCoV) by real-time RT-  
538 PCR. *Euro Surveill*, 25(3). doi: 10.2807/1560-7917.es.2020.25.3.2000045
- 539 9. D'Amico, F., Baumgart, D. C., Danese, S., &Peyrin-Biroulet, L. (2020). Diarrhea During  
540 COVID-19 Infection: Pathogenesis, Epidemiology, Prevention, and Management.  
541 *ClinGastroenterolHepatol*. doi: 10.1016/j.cgh.2020.04.001
- 542 10. Daughton, C. G. (2020). Wastewater surveillance for population-wide Covid-19: The  
543 present and future. *Science of The Total Environment*, 139631. doi:  
544 <https://doi.org/10.1016/j.scitotenv.2020.139631>
- 545 11. Goswami, K., Bharali, S., &Hazarika, J. (2020). Projections for COVID-19 pandemic in  
546 India and effect of temperature and humidity. *Diabetes & Metabolic Syndrome*. doi:  
547 10.1016/j.dsx.2020.05.045

- 548 12. Heijnen, L., &Medema, G. (2011). Surveillance of influenza A and the pandemic  
549 influenza A (H1N1) 2009 in sewage and surface water in the Netherlands. *J Water*  
550 *Health*, 9(3), 434-442. doi: 10.2166/wh.2011.019
- 551 13. Hellmér, M., Paxéus, N., Magnius, L., Enache, L., Arnholm, B., Johansson, A., . .  
552 .Norder, H. (2014). Detection of pathogenic viruses in sewage provided early warnings of  
553 hepatitis A virus and norovirus outbreaks. *Appl Environ Microbiol*, 80(21), 6771-6781.  
554 doi: 10.1128/aem.01981-14.
- 555 14. Heymann, D.L., Shindo, N., 2020. COVID-19: what is next for public health? *Lancet*.  
556 [https://doi.org/10.1016/S0140-6736\(20\)30374-3](https://doi.org/10.1016/S0140-6736(20)30374-3).
- 557 15. Hindson, J. (2020). COVID-19: faecal–oral transmission? *Nature Reviews*  
558 *Gastroenterology &Hepatology*, 17(5), 259-259. doi: 10.1038/s41575-020-0295-7
- 559 16. John Hopkins University 1, 2020. Last accessed:  
560 15.06.2020.URL:[https://www.arcgis.com/apps/opsdashboard/index.html#/85320e2ea542](https://www.arcgis.com/apps/opsdashboard/index.html#/85320e2ea5424dfaaa75ae62e5c06e61)  
561 [4dfaaa75ae62e5c06e61](https://www.arcgis.com/apps/opsdashboard/index.html#/85320e2ea5424dfaaa75ae62e5c06e61)
- 562 17. Kitajima, M., Ahmed, W., Bibby, K., Carducci, A., Gerba, C. P., Hamilton, K. A., ...&  
563 Rose, J. B. (2020). SARS-CoV-2 in wastewater: State of the knowledge and research  
564 needs. *Science of The Total Environment*, 139076. doi:  
565 <https://doi.org/10.1016/j.scitotenv.2020.139076>
- 566 18. La Rosa, G., Bonadonna, L., Lucentini, L., Kenmoe, S., &Suffredini, E. (2020).  
567 Coronavirus in water environments: Occurrence, persistence and concentration methods -  
568 A scoping review. *Water Res*, 179, 115899. doi: 10.1016/j.watres.2020.115899
- 569 19. Leung, W. K., To, K. F., Chan, P. K., Chan, H. L., Wu, A. K., Lee, N., ... & Sung, J. J.  
570 (2003). Enteric involvement of severe acute respiratory syndrome-associated coronavirus  
571 infection. *Gastroenterology*, 125(4), 1011-1017.doi:  
572 <https://doi.org/10.1016/j.gastro.2003.08.001>

- 573 20. Ling, Y., Xu, S. B., Lin, Y. X., Tian, D., Zhu, Z. Q., Dai, F. H., ... & Hu, B. J. (2020).  
574 Persistence and clearance of viral RNA in 2019 novel coronavirus disease rehabilitation  
575 patients. *Chinese medical journal*.doi: 10.1097/CM9.0000000000000774
- 576 21. Mallapaty, S., (2020). How sewage could reveal true scale of coronavirus outbreak.  
577 *Nature* 580, 176-177 (2020). doi: 10.1038/d41586-020-00973-x URL:  
578 <https://www.nature.com/articles/d41586-020-00973-x>.
- 579 22. Medema, G., Heijnen, L., Elsinga, G., Italiaander, R., & Brouwer, A. (2020). Presence of  
580 SARS-Coronavirus-2 in sewage. *medRxiv*, 2020.2003.2029.20045880. doi:  
581 10.1101/2020.03.29.20045880
- 582 23. Méndez-Arriaga, F. (2020). The temperature and regional climate effects on  
583 communitarian COVID-19 contagion in Mexico throughout phase 1. *Science of The Total*  
584 *Environment*, 139560. doi: <https://doi.org/10.1016/j.scitotenv.2020.139560>
- 585 24. Nghiem, L. D., Morgan, B., Donner, E., & Short, M. D. (2020). The COVID-19  
586 pandemic: considerations for the waste and wastewater services sector. *Case Studies in*  
587 *Chemical and Environmental Engineering*, 100006. doi:  
588 <https://doi.org/10.1016/j.cscee.2020.100006>
- 589 25. Nicastri, E., D'Abramo, A., Faggioni, G., De Santis, R., Mariano, A., Lepore, L., . . . The  
590 Italian Army Covid-Study, G. (2020). Coronavirus disease (COVID-19) in a  
591 paucisymptomatic patient: epidemiological and clinical challenge in settings with limited  
592 community transmission, Italy, February 2020. *Euro Surveill*, 25(11). doi: 10.2807/1560-  
593 7917.es.2020.25.11.2000230
- 594 26. Núñez-Delgado, A. (2020). What do we know about the SARS-CoV-2 coronavirus in the  
595 environment?. *Science of the Total Environment*, 138647. doi:  
596 <https://doi.org/10.1016/j.scitotenv.2020.138647>



- 597 27. Orive, G., Lertxundi, U., & Barcelo, D. (2020). Early SARS-CoV-2 outbreak detection by  
598 sewage-based epidemiology. *Science of The Total Environment*, 139298. doi:  
599 <https://doi.org/10.1016/j.scitotenv.2020.139298>
- 600 28. Randazzo, W., Truchado, P., Cuevas-Ferrando, E., Simón, P., Allende, A., & Sánchez, G.  
601 (2020). SARS-CoV-2 RNA in wastewater anticipated COVID-19 occurrence in a low  
602 prevalence area. *Water Research*, 115942. doi:  
603 <https://doi.org/10.1016/j.watres.2020.115942>
- 604 29. Sims, N., & Kasprzyk-Hordern, B. (2020). Future perspectives of wastewater-based  
605 epidemiology: Monitoring infectious disease spread and resistance to the community  
606 level. *Environ Int*, 139, 105689. doi: 10.1016/j.envint.2020.105689
- 607 30. Sinclair, R. G., Choi, C. Y., Riley, M. R., & Gerba, C. P. (2008). Pathogen surveillance  
608 through monitoring of sewer systems. *AdvApplMicrobiol*, 65, 249-269. doi:  
609 10.1016/s0065-2164(08)00609-6
- 610 31. Tang, A., Tong, Z., Wang, H., Dai, Y., Li, K., Liu, J....Yan, J. (2020). Detection of Novel  
611 Coronavirus by RT-PCR in Stool Specimen from Asymptomatic Child, China. *Emerging*  
612 *Infectious Diseases*, 26(6), 1337-1339. <https://dx.doi.org/10.3201/eid2606.200301>
- 613 32. Tyrrell DAJ, Myint SH. Coronaviruses. In: Baron S, ed. *Medical Microbiology*. 4th ed.  
614 Galveston (TX): University of Texas Medical Branch at Galveston; 1996.
- 615 33. Wang, J., Shen, J., Ye, D., Yan, X., Zhang, Y., Yang, W., ...& Pan, L. (2020a).  
616 Disinfection technology of hospital wastes and wastewater: Suggestions for disinfection  
617 strategy during coronavirus Disease 2019 (COVID-19) pandemic in China.  
618 *Environmental Pollution*, 114665. doi: <https://doi.org/10.1016/j.envpol.2020.114665>
- 619 34. Wang, W., Xu, Y., Gao, R., Lu, R., Han, K., Wu, G., & Tan, W. (2020b). Detection of  
620 SARS-CoV-2 in Different Types of Clinical Specimens. *JAMA*, 323(18), 1843-1844. doi:  
621 10.1001/jama.2020.3786

- 622 35. World Health Organization, 2020a. Naming the coronavirus disease (COVID-19) and the  
623 virus that causes it. Available at: [https://www.who.int/emergencies/diseases/novel-](https://www.who.int/emergencies/diseases/novel-coronavirus-2019/technical-guidance/naming-the-coronavirus-disease-(covid-2019)-andthe-virus-that-causes-it)  
624 [coronavirus-](https://www.who.int/emergencies/diseases/novel-coronavirus-2019/technical-guidance/naming-the-coronavirus-disease-(covid-2019)-andthe-virus-that-causes-it) 2019/technical-guidance/naming-the-coronavirus-disease-(covid-2019)-  
625 andthe- virus-that-causes-it
- 626 36. World Health Organization, 2020b. Last accessed: 15.06.2020. URL:  
627 [https://www.who.int/news-room/commentaries/detail/modes-of-transmission-of-virus-](https://www.who.int/news-room/commentaries/detail/modes-of-transmission-of-virus-causing-covid-19-implications-for-ipc-precaution-recommendations)  
628 [causing-covid-19-implications-for-ipc-precaution-recommendations](https://www.who.int/news-room/commentaries/detail/modes-of-transmission-of-virus-causing-covid-19-implications-for-ipc-precaution-recommendations)
- 629 37. World Health Organization, 2020c. Last accessed: 15.06.2020. URL:  
630 <https://www.who.int/health-topics/coronavirus>
- 631 38. World Health Organization, 2020d. Last accessed: 15.06.2020  
632 URL:<https://www.who.int/news-room/detail/27-04-2020-who-timeline---covid19>
- 633 39. Wu, F., Xiao, A., Zhang, J., Gu, X., Lee, W. L., Kauffman, K., ...&Duvall, C. (2020a).  
634 SARS-CoV-2 titers in wastewater are higher than expected from clinically confirmed  
635 cases. medRxiv. doi: <https://doi.org/10.1101/2020.04.05.20051540>
- 636 40. Wu, Y., Guo, C., Tang, L., Hong, Z., Zhou, J., Dong, X., ...&Kuang, L. (2020b).  
637 Prolonged presence of SARS-CoV-2 viral RNA in faecal samples. The lancet  
638 Gastroenterology &hepatology, 5(5), 434-435. doi: [https://doi.org/10.1016/S2468-](https://doi.org/10.1016/S2468-1253(20)30083-2)  
639 [1253\(20\)30083-2](https://doi.org/10.1016/S2468-1253(20)30083-2)
- 640 41. Wurtzer, S., Marechal, V., Mouchel, J. M., Maday, Y., Teyssou, R., Richard, E., ...&  
641 Moulin, L. (2020). Evaluation of lockdown impact on SARS-CoV-2 dynamics through  
642 viral genome quantification in Paris wastewaters. medRxiv.doi:  
643 <https://doi.org/10.1101/2020.04.12.20062679>
- 644 42. Yeo, C., Kaushal, S., Yeo, D., 2020. Enteric involvement of coronaviruses: is faecal-oral  
645 transmission of SARS-CoV-2 possible? Lancet Gastroenterol. Hepatol. 5 (4), 335e337.  
646 [https://doi.org/10.1016/S2468-1253\(20\)30048-0](https://doi.org/10.1016/S2468-1253(20)30048-0).

- 647 43. Zhou, J., Li, C., Zhao, G., Chu, H., Wang, D., Yan, H. H. N., ...& Chiu, M. C. (2017).  
648 Human intestinal tract serves as an alternative infection route for Middle East respiratory  
649 syndrome coronavirus. *Science advances*, 3(11), eaao4966.doi: 10.1126/sciadv.aao4966
- 650 44. Zhou, P., Yang, X. L., Wang, X. G., Hu, B., Zhang, L., Zhang, W., ...& Chen, H. D.  
651 (2020). A pneumonia outbreak associated with a new coronavirus of probable bat origin.  
652 *nature*, 579(7798), 270-273.doi: <https://doi.org/10.1038/s41586-020-2012-7>
- 653 45. Xiao, Fei, et al. "Evidence for gastrointestinal infection of SARS-CoV-2."  
654 *Gastroenterology* 158.6 (2020): 1831-1833. doi:  
655 <https://doi.org/10.1053/j.gastro.2020.02.055> .
- 656  
657  
658  
659  
660  
661  
662  
663  
664  
665  
666  
667  
668  
669  
670  
671

672 Graphical Abstract

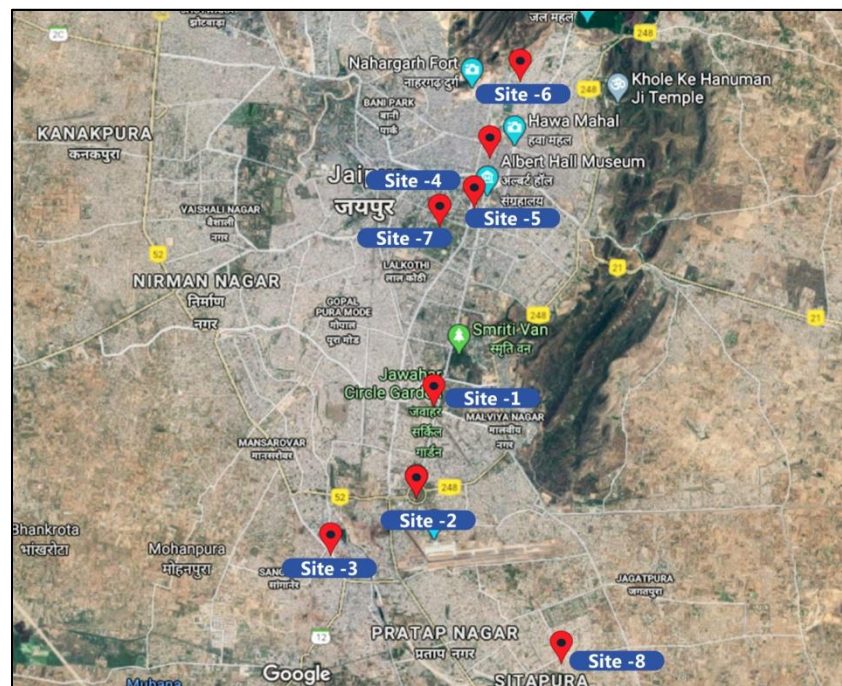


673

674

675 Figures

676



677

678 **Figure 1: Map showing locations of sample collection from Jaipur (India) as shown by**  
 679 **red pins.** Sites 1-6 are Municipal WWTPs, and Site 7 and 8 are Hospitals (SMS Hospital &  
 680 Mahatma Gandhi Hospital WWTP)

681

Site No.	Sampling location	Date of sampling	Sample type	Target genes					Inference
				Rdrp Gene	Orf1ab Gene	E gene	S gene	N gene	
Site 1	MNIT	04.05.2020	Influent	-	NA	-	NA	-	Negative
Site 2	Jawahar Circle	04.05.2020	Influent	-	NA	-	NA	-	Negative
		12.06.2020		-	NA	-	NA	-	Negative
Site 3	Dravyawati River	04.05.2020	Influent	-	NA	-	NA	-	Negative
		04.05.2020	Effluent	-	NA	-	NA	-	Negative
Site 4	Central Park	04.05.2020	Influent	-	NA	-	NA	-	Negative
		25.05.2020		+	NA	-	NA	-	Negative
		04.05.2020	Effluent	-	NA	-	NA	-	Negative
Site 5	Ramniwas Garden	04.05.2020	Influent	+	NA	+	NA	+	Positive
		26.05.2020		+	NA	+	NA	+	Positive
		12.06.2020		-	NA	+	NA	+	Positive
		04.05.2020	Effluent	-	NA	-	NA	-	Negative
		26.05.2020		-	NA	-	NA	-	Inconclusive
		12.06.2020		-	NA	+	NA	-	Negative
Site 6	Brahmpuri	15.05.2020	Influent	NA	-	NA	-	-	Negative
		20.05.2020		+	NA	+	NA	+	Positive
		12.06.2020		-	NA	+	NA	+	Positive
		12.06.2020	Effluent	-	NA	-	NA	-	Negative
		26.05.2020		-	NA	-	NA	-	Negative (Method A)
Site 7	SMS Hospital	08.06.2020	Influent	NA	+	NA	+	+	Positive (Method B at 4 )
		12.06.2020		-	NA	+	NA	-	Negative (Method B at RT)
		26.05.2020	Influent	-	NA	-	NA	-	Negative
12.06.2020	-	NA		-	NA	+	Negative		
26.05.2020	Effluent	-		NA	-	NA	-	Negative	
12.06.2020		-	NA	+	NA	-	Negative		

682  
683 **Figure 2: Comprehensive data analysis of sampling sites and result interpretation:** *The*  
684 *samples inferred positive are coded red while those inferred as negative sample for SARS-*  
685 *CoV-2 are coded in green. Samples which showed valid Ct for at least two of the three target*  
686 *genes are shown here in orange (as positive) while the samples with all the three genes*  
687 *having valid Ct values (as positive) are shown here in red. Site 7 (Influent) is color coded*  
688 *yellow, is discussed in section 3.5. Site 7, effluent sample, Inconclusive (marked white) shows*  
689 *the reaction for which internal control failed in RT- PCR detection.*

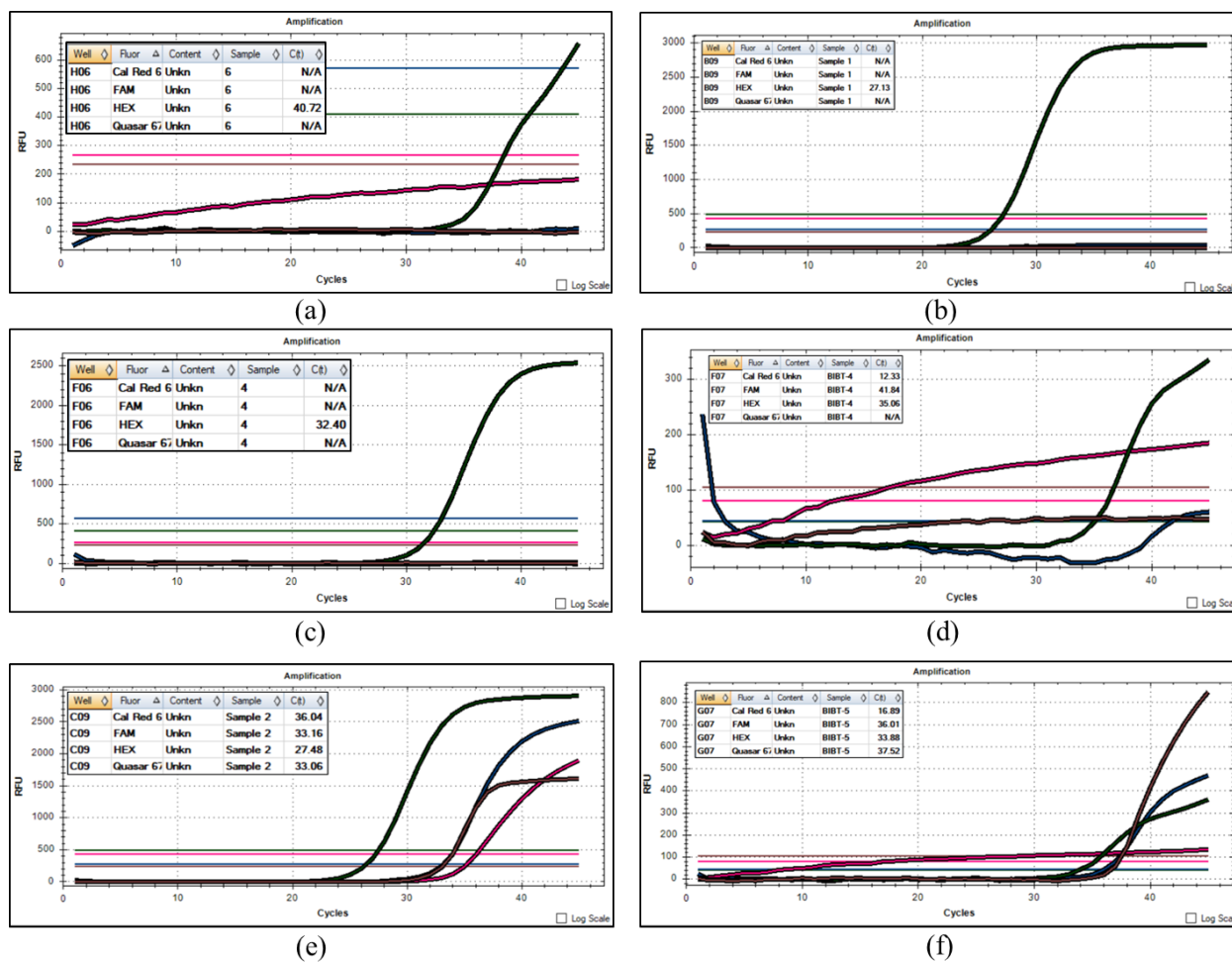
690

691

692

693

694



695

696 **Figure 3: Results analysis of untreated wastewater samples collected from municipal**  
 697 **WWTPs:** The Graphs of Ct values were analyzed to determine positive and negative samples  
 698 based on presence of the genome. The Ct values of <40 were considered to be valid for genes  
 699 RdRp, E and N tested by Allplex kit. Those samples which had two out of three genes with  
 700 valid Ct values were considered to be overall positive for the presence of intact viral genome.

701 (a) Site 1, untreated wastewater sample showing negative results.

702 (b) Site 2, untreated wastewater sample showing negative results

703 (c) Site 3, untreated wastewater samples showing negative results

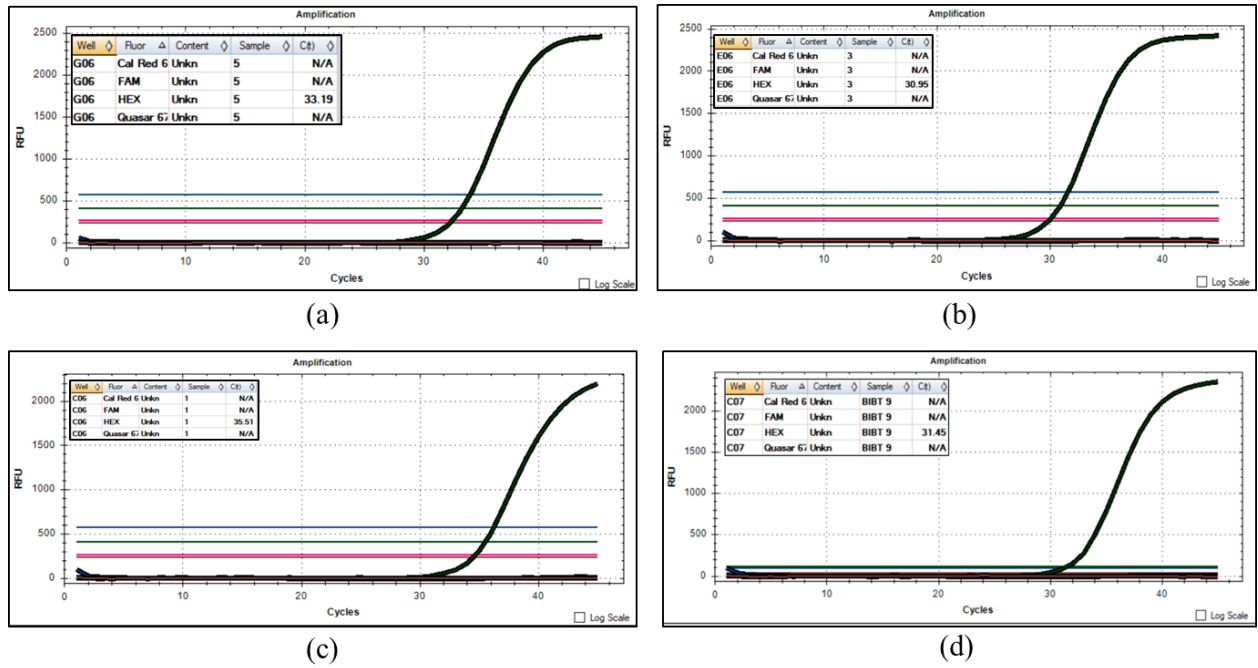
704 (d) Site 4, untreated wastewater sample, showing negative results.

705 (e) Site 5, untreated wastewater sample, showing all three genes tested (RdRp, E and N gene)  
 706 had valid Ct values.

707 (e) Site 6, untreated wastewater sample, showing all three genes tested (RdRp, E and N gene)  
 708 had valid Ct values.

709

710



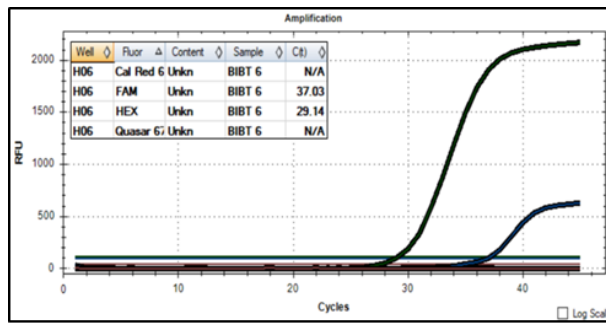
711

712 **Figure 4: Results analysis of treated wastewater samples collected from the municipal**  
 713 **WWTPs (a) Site 3 (b) Site 4 (c) Site 5 (d) Site 6**, shown here are graphs for Ct values for the  
 714 three target genes tested. The graphs shown here have valid Ct value for the internal control  
 715 but not for the target genes; hence all the samples are negative.

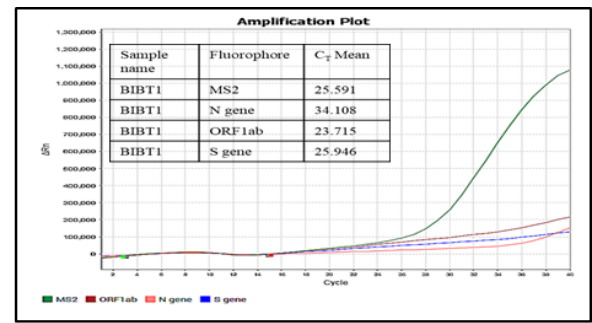
716

717

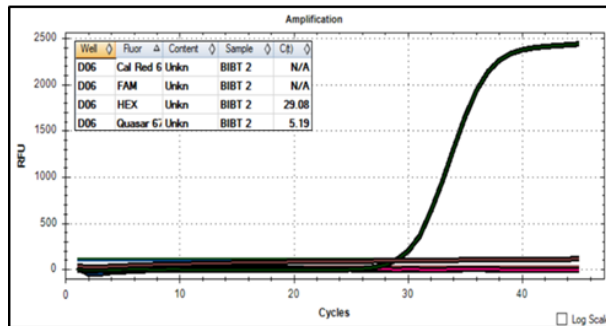
718



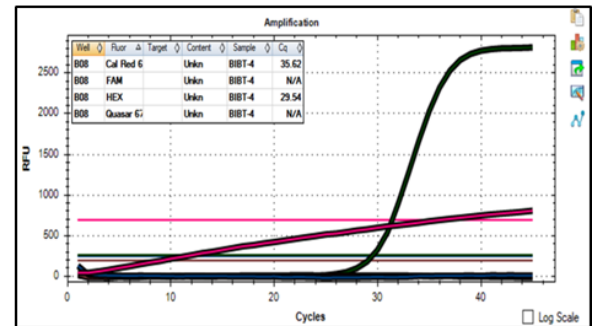
(a)



(b)



(c)



(d)

719

720 **Figure 5: Results analysis of wastewater samples collected from the hospitals**

721 (a) Site 7, untreated wastewater sample showing valid Ct for one gene (E gene) (processed at  
722 room temperature)

723 (b) Site 7, untreated wastewater sample, showing all three genes tested (ORF1ab, S and N)  
724 had valid Ct values at 4°C.

725 (c) Site 8, untreated wastewater samples showing negative results

726 (d) Site 8, treated wastewater sample, showing negative results.

727

728

729

730

731

732

733



734

735 Tables

736 Table 1: *Types of samples and sampling locations*

737

Site No.	Date of sampling	Sampling location (based on Treatment technology)	Type of Treatment technology		Types of sample		Instrument used	Kit used
Site1	04.05.2020	Malaviya National Institute of technology (MNIT)	MBBR+Cl	Raw sewage (MI)	Treated sample (ME)		BioRad CFX96	Allplex™ 2019-nCoV Assay Kit
Site 2	04.05.2020 12.06.2020	Jawahar Circle	MBBR+UV	Raw sewage (JCI)	Secondary treated (JCE)	Tertiary treated sample (JCUVE)	BioRad CFX96	Allplex™ 2019-nCoV Assay Kit
Site 3	04.05.2020	Dravyavati River Project	SBR+Cl	Raw sewage (DPI)	Treated sample (DPE)	Mixed Sample (DPM)	BioRad CFX96	Allplex™ 2019-nCoV Assay Kit
Site 4	04.05.2020 15.05.2020 20.05.2020	Central Park	SBR+Cl	Raw sewage (CPI)	Treated sample (CPE)		BioRad CFX96 AB Quant Studio3	Allplex™ 2019-nCoV Assay Kit TaqPath™ COVID-19 Combo Kit
Site 5	04.05.2020 15.05.2020 26.05.2020 12.06.2020	Ramniwas Garden	MBBR+UV	Raw sewage (RGI)	Treated sample (RGE)		BioRad CFX96 AB Quant Studio3	Allplex™ 2019-nCoV Assay Kit TaqPath™ COVID-19

							Combo Kit
<b>Site 6</b>	15.05.2020 20.05.2020 26.05.2020 12.06.2020	Brahmpuri WWTP	SBR+No Tertiary	Raw sewage (BI)	Treated sample (BE)	BioRad CFx96 AB Quant Studio3	Allplex™ 2019- nCoV Assay Kit TaqPath™ COVID-19 Combo Kit
<b>Site 7</b>	26.05.2020 08.05.2020 12.06.2020	SMS Hospital	No STP	Raw sewage (SMSI)		BioRad CFx96	Allplex™ 2019- nCoV Assay Kit
<b>Site 8</b>	26.05.2020 12.06.2020	Mahatma Gandhi Hospital	MBBR +UV	Raw sewage (MGI)	Treated sample (MGE)	BioRad CFx96	Allplex™ 2019- nCoV Assay kit

738

739

740

741

742

743

744

745

746

747

748 Table 2: List of Fluorophores used for analyte detection in RT-PCR

<b>Allplex™ 2019-nCoV Assay Kit</b>		<b>TaqPath™ COVID-19 Combo Kit</b>	
<b>Fluorophore</b>	<b>Analyte</b>	<b>Fluorophore</b>	<b>Analyte</b>
FAM	E gene	FAM	ORF1ab
HEX	Internal Control (IC)	VIC	N gene
Cal Red 610	RdRp gene	ABY	S gene
Quasar 670	N gene	JUN	MS2

749 Note: As instructed by the vendors of the two detection kits

750

751

752