

1 **CLINICAL PROPERTIES AND DIAGNOSTIC METHODS OF COVID-19**
2 **INFECTION IN PREGNANCIES: META-ANALYSIS**

3
4
5
6
7
8
9
10
11
12
13
14
15
16
17
18
19
20
21
22
23
24
25
26
27
28
29
30
31
32
33
34
35
36
37
38
39
40
41
42
43
44
45

Banu Uygun-Can^{1*} & Bilge Acar-Bolat²

¹Dr., Department of Microbiology, Dental Faculty, Marmara University, Istanbul-Turkey

banucan@marmara.edu.tr

<https://orcid.org/0000-0002-9577-0352>

² Assoc. Prof. Dr., Department of Quantitative Methods, School of Business, Istanbul University,
Istanbul-Turkey

bacar@istanbul.edu.tr

<https://orcid.org/0000-0001-9815-4371>

Data Availability Statement: The data that support the findings of this study are openly available in "figshare" at <https://doi.org/10.6084/m9.figshare.12442031>

**Corresponding author:* Dr. Banu Uygun-Can

Address: Marmara University Campus of Health Sciences Department of Microbiology
Basibuyuk Mah. Sk.9/3 34854 Basibuyuk/Maltepe/Istanbul

Tel: +90 216 7775000 (6132)

Fax: +90 216 7775001

46

47 **Abstract**

48 We aimed to summarize reliable medical evidence by the meta-analysis of all
49 published retrospective studies that examined data based on the detection of severe
50 acute respiratory syndrome coronavirus 2 (SARS-CoV-2) by clinical symptoms,
51 molecular (RT-PCR) diagnosis and characteristic CT imaging features in pregnant
52 women. MEDLINE PubMed, SCOPUS, ISI Web of Science, Clinical Key, and
53 CINAHL databases were used to select the studies. Then, 384 articles were
54 received, including the studies until 01/MAY/2020. As a result of the full-text
55 evaluation, 12 retrospective articles covering all the data related were selected. A
56 total of 181 pregnant cases with SARS-CoV-2 infections were included in the meta-
57 analysis within the scope of these articles. According to the results, the incidence of
58 fever was 38.1% (95% CI: 14.2-65%), and cough was 22% (95% CI: 10.8-35.2%)
59 among all clinical features of pregnant cases with SARS-CoV-2 infection. So, fever
60 and cough are the most common symptoms in pregnant cases with SARS-CoV-2
61 infection, and 91.8% (95% CI: 76.7-99.9%) of RT-PCR results are positive. Moreover,
62 abnormal CT incidence is 97.9% (95% CI: 94.2-99.9%) positive. No case was death.
63 However, as this virus spreads globally, it should not be overlooked that the
64 incidence will increase in pregnant women and may be in the risky group. RT-PCR
65 and CT can be used together in an accurate and safe diagnosis. In conclusion, these
66 findings will provide important guidance for current studies regarding the clinical
67 features and correct detection of SARS-CoV-2 infection in pregnant women, as well
68 as whether it will create emergency tables that will require the use of a viral drug.

69 **Keywords**

70 COVID-19, SARS-CoV-2, pregnancy, clinical characteristics.

71

72

73

74

75

76

77 **1. Introduction**

78 Wuhan has been based on Coronavirus 2 (SARS - CoV - 2), an infectious
79 pneumonia epidemic that has started rapidly in China and has spread to many
80 countries around the world since December 2019 (The Lancet, 2020). On January
81 30, 2020, the World Health Organization (WHO) announced that the SARS - CoV - 2
82 epidemic is a critical and international public health problem. Currently, the disease
83 caused by the SARS - CoV - 2 infection in humans has exceeded the outlook in the
84 severe acute respiratory syndrome (SARS) and the Middle East respiratory
85 syndrome (MERS) outbreak in 2002 (Sun et al., 2020).

86

87 To date, the total number of cases in the world was 3,349,786 and the total number
88 of deaths was 238 628 (last update 03/MAY/2020 10: 00 hours, WHO, status report-
89 104) and it is still increasing. Coronaviruses (CoV) are RNA viruses. Until December
90 2019, the CoV family consisted of six human pathogenic species: SARS-CoV and
91 MERS-CoV. Seventh human pathogenic species was added with SARS-CoV-2 (Hui,
92 2017). The four "endemic" species (HKU1, OC43, 229E, NL63) are of clinical
93 importance so far, often produce cold symptoms and are responsible for about 10%
94 of seasonal airway diseases not caused by the flu. Besides, SARS-CoV and MERS-
95 CoV, which caused severe airway symptoms and diseases associated with a high
96 mortality rate (10-30%, respectively), were limited to a one-time outbreak and were
97 predominantly of regional significance (Sun et al., 2020).

98 Real-time reverse transcription-polymerase chain reaction (RT-PCR) diagnostic tests
99 have been rapidly developed on SARS-CoV-2 (Wang et al., 2020). Through genetic
100 sequence analysis, it was stated that SARS-CoV-2 belongs to the genus β -
101 coronavirus with 79.0% nucleotide similarity and 51.8% identity with MERS-CoV and
102 SARS-CoV (Ren et al., 2020). Besides, it has been reported that SARS - CoV - 2 is
103 96% identical to a bat coronavirus throughout its genome (J. Liu et al., 2020; Zhou et
104 al., 2020).

105 The pandemic spreading can be fatal when healthcare professionals are not ready to
106 manage the infection, as now seen in the COVID-19 outbreak. The SARS-CoV-2
107 virus was also isolated from asymptomatic individuals, and affected patients showed
108 contagiousness even 2 weeks after symptoms ceased (Dashraath, Lin, et al., 2020).

109 Thus, it required radical measures on all continents, including closing the country's
110 borders.

111 As the epidemic of COVID-19 spreads rapidly, pregnant women have drawn attention
112 to the prevention and control of COVID-19 infection due to being at risk of respiratory
113 infection, especially flu. Physiological and mechanical changes in pregnancy increase
114 susceptibility to infections in general and promote rapid progression to respiratory
115 failure, especially when the cardiovascular system is affected. Thus, they represent a
116 high-risk group during infectious outbreaks (Dashraath, Wong, et al., 2020).

117 All these risk factors cause an essential point to examine pregnant women. Clinical
118 features and the functionality of the methods of detection of SARS-CoV-2 infection in
119 pregnant women are currently the focus of attention in medical studies. Though,
120 owing to the different designs of different clinical trials and small sample sizes,
121 published trials are also various (Sun et al., 2020). The goal of this study was to
122 examine all these articles about the detection of SARS-CoV-2 in pregnant women
123 with molecular (PCR) and CT imaging methods, the frequency of occurrence of these
124 clinical features, and also the detection correction of the methods used in diagnosis
125 by meta-analysis.

126 **2. Material and Methods**

127 **2.1. Sources of Information**

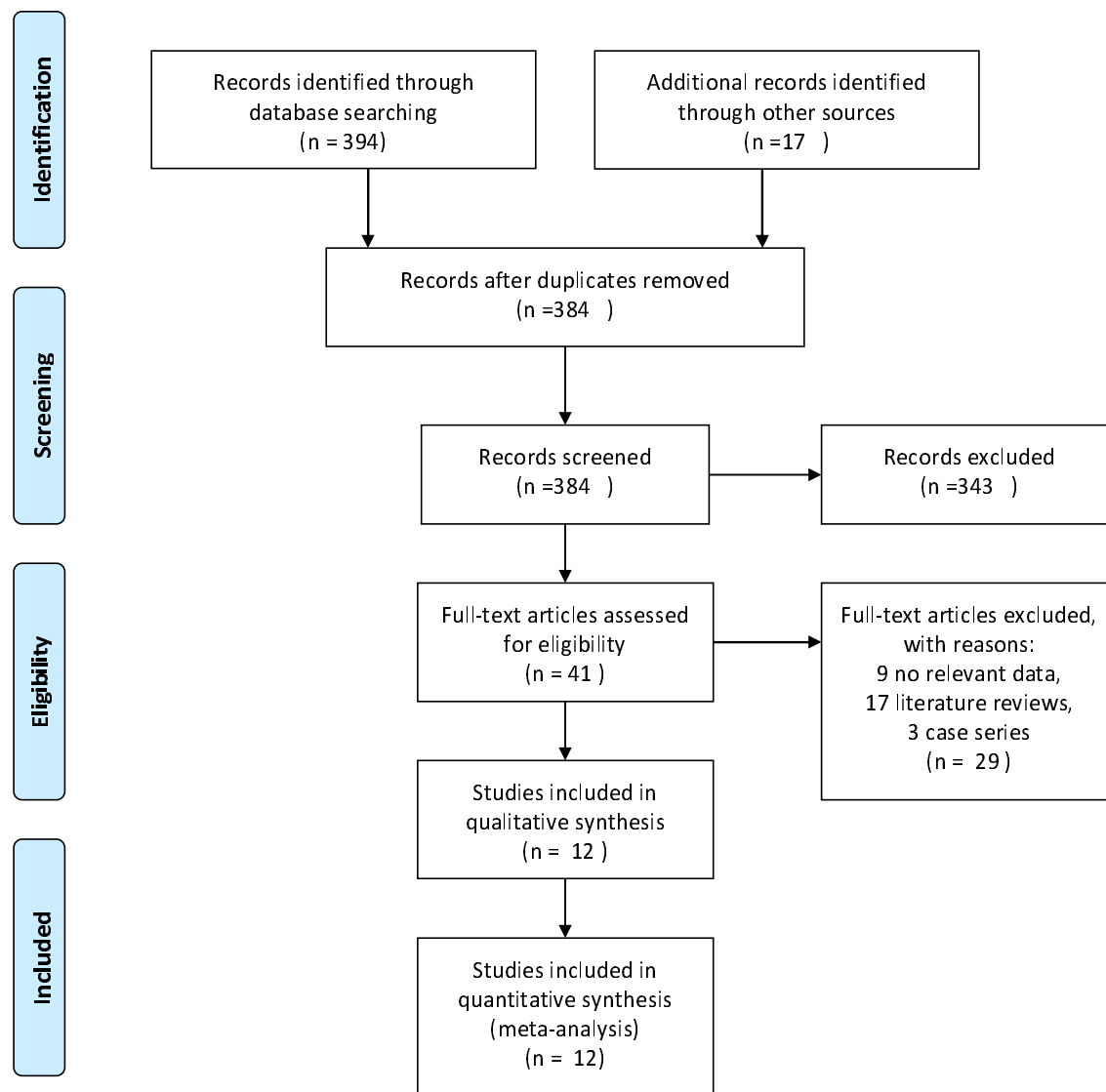
128
129
130 MEDLINE PubMed, SCOPUS, Clinical Key Library, CINAHL (Cumulative Index to
131 Nursing and Allied Health Literature) and ISI Web of Science were searched using
132 combined keywords: "2019-nCoV and/or pregnancy", "COVID-19 and/or pregnancy"
133 and "SARS-CoV-2 and/or pregnancy".

134 135 **2.2. Article Selection and Publication Quality Evaluation**

136 Meta-analysis was elaborated according to the PRISMA guidelines (Moher et al.,
137 2015). The literature search and selection process are presented in Figure 1, which
138 was conducted according to the PRISMA flow chart.

139
140

141



142
143

144 **Figure 1.** PRISMA flow chart

145

146 As a result of the electronic database search, we received 394 articles and 17 of
147 them were excluded due to repeated access. Finally, 12 unique studies were
148 selected that reported on clinical properties and diagnostic methods. The meta-
149 analysis was done using 12 articles (H. Chen et al., 2020; S Chen et al., 2020; Siyu
150 Chen et al., 2020; N. Li et al., n.d.; D. Liu et al., 2020; H. Liu et al., 2020; C. Wu et al.,
151 2020; X. Wu et al., 2020; Yang et al., 2020; Yu et al., 2020; Zhang et al., 2020; Zhu
152 et al., 2020) with a total of 181 patients that satisfied the study criteria. The

153 Newcastle-Ottawa Scale (NOS) was used to assess the quality of included studies
 154 (Stang, 2010). The quality scores of all varied from 0 to 9 (Table 1).

155

156 **Table 1.** Characteristics of the included studies on COVID-19, 2020.

Author	Journal name	Date (M/D)	No. patient	Study type	Age	Article quality	Clinical symptoms
Chen et. al.	Lancet	03/07	9	Retrospective	26-40	8	Fever Cough Sore throat Myalgia and/or Fatigue Dyspnoea Diarrhea RT-PCR CT
Liu et. al.	J Infect	03/02	41	Retrospective	22-42	8	Fever Cough Myalgia and/or Fatigue Dyspnoea RT-PCR CT
Yu et. al.	Lancet Infect Dis	03/24	7	Retrospective	29-34	7	Fever Cough Dyspnoea Diarrhea RT-PCR CT
Zhu et al.	Transl Pediatr	02/10	9	Retrospective	25-35	6	Fever Cough Sore throat Diarrhea RT-PCR CT
Chen et. al.	Zhonghua Bing Li Xue Za Zhi	03/01	3	Retrospective	23-34	6	Fever RT-PCR CT
Zhang et. al.	Zhonghua Fu Chan Ke Za Zhi	03/08	16	Retrospective	24-34	7	Cough Dyspnoea Diarrhea RT-PCR CT

Wu et. al.	Int J Gynaecol Obstet	04/08	23	Retrospective	22-37	8	Fever Cough Runny Nose RT-PCR CT
Liu et. al.	AJR Am J Roentgenol	03/06	15	Retrospective	23-40	7	Fever Cough Sore throat Myalgia and/or Fatigue Dyspnoea Diarrhea RT-PCR CT
Chen et.al.	J Med Virol	03/28	5	Retrospective	25-31	7	Cough Runny Nose RT-PCR CT
Yang et. al.	J Infect	04/12	13	Retrospective	30.2 [*]	8	Fever Cough RT-PCR CT
Li et. al.	Clin Infect Dis	03/30	34	Case-control	25-35	8	Fever Cough Sore throat Dyspnoea RT-PCR CT
Wu et. al.	Virol Sin	04/10	6	Retrospective	26-35	8	RT-PCR CT

157 *Age is given as a mean value of 30.2.

158

159 **2.3. Statistical analysis**

160

161 The meta-analysis of incidence rates was conducted using the "metafor" package in
 162 R version 3.6.2 (Viechtbauer, 2010). It includes 12 studies, with a total of 181
 163 patients. We employed the random-effects model according to assessing
 164 heterogeneity of the meta-analysis.

165 The publication bias was detected by Egger's test. The test results and
 166 corresponding P values are presented in Table 2. The Egger's test indicated that

167 publication bias exists for diarrhea and RT-PCR groups ($P = .019$ and $P=0.025$,
168 respectively)

169

170 **Table 2.** Results of the Egger's test

Fever	Cough	Dyspnoea	Myalgia and/or Fatigue	Diarrhea	Sore throat	Runny nose	CT	RT- PCR
0.317	0.220	0.897	0.923	0.019	0.114	0.130	0.460	0.025

171

172 The double-arcsine method would be a more appropriate choice when the small
173 sample size and extreme proportions need to be handled. The double arcsin
174 transformation was applied in order to make the skewed distribution of proportions to
175 conform to the normal distribution (Barendregt et al., 2013; Rousseau & Evans,
176 2017). To conclude, we performed the inverse of the double arcsine transformation
177 for proportions using the harmonic mean of the sample sizes for the back-
178 transformation. The results are given for the summary incidence rate and confidence
179 interval in Table 3.

180 **3. Results**

181 The incidence of fever was 38% (95% CI: 14% -35%) and cough was 22% (95% CI:
182 10.8 -35.2%) among all clinical features of pregnant cases with SARS-CoV-2
183 infection by meta-analysis. Dyspnoea was observed only 3.3% (95% CI: 0.3 -8.2%).
184 The incidence of positive RT-PCR is 91.8 % (95% CI: 76.7-99.9%) and the incidence
185 of abnormal computer tomography (CT) is 97.9% (95% CI: 94.2-99.9%).

186 Since no clinical signs of vomiting were found in any of the studies included in the
187 analysis, the effect size was not given for it.

188

189 Detailed results of the meta-analysis are shown in Table 3.

190

191

192

193

194

195

196 **Table 3.** Meta-analyses results

Clinical symptom	Results of Meta-analysis	Lower limit	Upper limit
Fever	0.381	0.142	0.650
Cough	0.220	0.108	0.352
Dyspnoea	0.033	0.003	0.082
Myalgia and/or Fatigue	0.030	0.000	0.115
Diarrhea	0.004	0.000	0.036
Sore throat	0.002	0.000	0.028
Runny nose	0.000	0.000	0.010
CT	0.979	0.942	0.999
RT-PCR	0.918	0.767	0.999

197

198 **4. Discussion**

199

200 In the early stages of the SARS-CoV-2 epidemic, the case death rate is estimated to
201 be approximately 2% (Sun et al., 2020). Later, it is reported that the death rate in
202 China was 3.8%, which was lower than that of the two commonly transmitted
203 zoonotic CoV diseases, SARS and MERS (J. Liu et al., 2020).

204

205 SARS-CoV-2 infection is more likely to affect older people with comorbidity, with most
206 deaths clustering in this particular population (N. Chen et al., 2020; Q. Li et al., 2020;
207 J. Liu et al., 2020). The mortality rates of SARS and MERS infections are 9.6% (Hui,
208 2017) and 35% respectively (Azhar et al., 2019). Xie et al (Xie et al., 2005), stated
209 that 45% of patients showed symptoms of pulmonary fibrosis within 1 month after
210 infection with SARS-CoV, and 30-36% after 3-6 months. These studies suggested
211 that pulmonary fibrosis will be one of the serious complications in patients with
212 SARS-CoV-2 infection. Furthermore, due to the low mortality rate of SARS-CoV-2
213 infection and rapid spread among patients compared to SARS-CoV and MERS-CoV
214 infections, a large number of patients require treatment. In this case, health
215 equipment and health worker competence has been essential. Thus, COVID-19
216 threatens preparedness and biosecurity conditions in all countries. (Rodriguez-
217 Morales et al., 2020). At the same time, both of these coronaviruses can cause death

218 in a few, but significant numbers of pregnant cases, but specific risk factors for a fatal
219 outcome during pregnancy have not been clarified (Sun et al., 2020).

220 In addition, in another study, Zhao et al.(2020), the angiotensin-converting enzyme 2
221 (ACE2) SARS-CoV-2 receptor, they found that in healthy lung tissue, ACE2 is mainly
222 expressed by type I and type II alveolar epithelial cells. Type II alveolar cells (83%)
223 have been reported to express ACE2. For this reason, SARS-CoV-2 infection
224 damages most of the type II alveolar cells. The use of mechanical ventilation in the
225 treatment of patients can also aggravate the damage of alveolar cells. However, it
226 has also been reported that ACE2 is more expressive in pregnant women (Pringle et
227 al., 2011; X. Zhao et al., 2020).

228

229 Compared with past coronavirus pandemics, it has been reported that pregnancy has
230 a significant impact on the course of the disease of SARS-CoV and the outcome of
231 an infected patient. Therefore, the duration of the hospital stay of pregnant patients
232 was longer. In addition to kidney failure, sepsis, or common intravascular coagulation
233 disorder, the need for intensive care treatment was more common in pregnant
234 women. The mortality of pregnant infected patients has also increased significantly
235 (Lam et al., 2004). So far, there is very little data on MERS-CoV infection during
236 pregnancy. However, 11 reported symptomatic cases (Alfaraj et al., 2019), showed a
237 more severe course in pregnancy than SARS-CoV infection.

238

239 In addition to information about the effects of previous coronavirus outbreaks on
240 pregnant women, little data is known about the clinical course, possible risks, and the
241 validity of the methods used in the correct diagnosis for pregnant patients infected
242 with SARS-CoV-2. In this study, a meta-analysis of the data of publications
243 examining these possible risks and methods used in diagnosis for pregnant women
244 suffering from SARS-CoV-2 infection was performed. The results we found in
245 pregnant women with SARS-CoV-2 infections are common symptoms of fever,
246 cough, shortness of breath, general myalgia, weakness, diarrhea, dyspnea, and
247 pneumonia compared to the primary clinical symptoms in pregnant women with
248 MERS-CoV and SARS-CoV infections (J. Liu et al., 2020).

249

250 When we compare our results of Meta-analysis for pregnant women with the rates of
251 the study conducted with the non-pregnant adult group (Sun et al., 2020),

252 respectively, the incidence of fever was 38% (89.1%), the cough incidence 22%
253 (72.2%) and the incidence of myalgia and/or fatigue 3% (42.5%). The incidence of
254 dyspnoea is 3.3% (14.8%), the incidence of abnormal CT is 98% (96.6%), and the
255 case fatality rate of patients with SARS-CoV-2 infection is 4.3% (H. Chen et al., 2020;
256 S Chen et al., 2020; Siyu Chen et al., 2020; N. Li et al., 2020; D. Liu et al., 2020; H.
257 Liu et al., 2020; C. Wu et al., 2020; X. Wu et al., 2020; Yang et al., 2020; Yu et al.,
258 2020; Zhang et al., 2020; Zhu et al., 2020). In addition, symptoms of diarrhea, sore
259 throat, and runny nose are rare. In no case, mechanical ventilation was not required
260 in pregnant women, also there were no reported cases of death.

261

262 All irregularities in the imaging results were considered abnormal for the CT result.
263 According to our RT-PCR and CT results (91.8% -97.9% respectively), we think that
264 both should be used when evaluating to say that the cases are correct and definite
265 positive in pregnant women. However, it should be noted that there is radiation in the
266 CT examination, so the question of whether the re-examination interval is necessary
267 in the treatment of pregnant women with mild symptoms needs further discussion.
268 Based on the above, COVID-19 has mild clinical signs in pregnant women; some are
269 asymptomatic and need to be combined with epidemiological history and nucleic acid
270 detection. Weijie Guan et al. (2020), stated that frequent patterns in chest CT include
271 abnormal findings in the case reports, including asymptomatic patients, with ground-
272 glass opacity and bilateral irregular shading (Chan et al., 2020; Huang et al., 2020; J.
273 Liu et al., 2020). Weijie Guan et al. (2020), stated that frequent patterns in chest CT
274 include abnormal findings in the case reports, including asymptomatic patients, with
275 ground-glass opacity and bilateral irregular shading (Chan et al., 2020; Huang et al.,
276 2020; J. Liu et al., 2020).

277

278 The results of this meta-analysis study here highlight the clinical, molecular, and
279 imaging findings of COVID-19 pregnant cases that may assist clinicians. In this way,
280 it will prevent further contamination by implementing infection control measures,
281 thanks to early recognition of cases and adequate intervention by clinicians. Frequent
282 evaluation of available evidence of COVID-19, such as clinical suspicion and
283 definitive diagnosis, has been deemed necessary to prevent contamination from
284 health workers during close contact in pregnant women (Biscayart et al., 2020;
285 Holshue et al., 2020; Rodríguez-Morales et al., 2020).

286

287 Here we have discussed 12 articles, including 181 pregnant cases with SARS-CoV-2
288 infection. So far, it is the first meta-analysis to examine the factors and prenatal
289 clinical features that may be effective in initial diagnosis in pregnant women. The
290 quality of the literature included in this study is high. However, this review also has
291 some limitations. As of the current period, there are few studies for the content. Data
292 from all countries are urgently needed on this issue. Thus, it would be more
293 appropriate to include a large number of studies in a broad geographical scope in
294 order to obtain a more comprehensive view of COVID-19 in pregnant women as a
295 result. Since detailed patient information was not given in all studies, especially
296 regarding clinical findings, this could not be included in the meta-analysis. In
297 particular, there were negative results, although the case showed positive clinical
298 signs, since CT contained radiation, and its use was not preferred or repeated. The
299 data in this analysis allow for the first synthesis of the clinical, molecular, and CT
300 diagnostic features of COVID-19. Also, it is not included in the meta-analysis results,
301 since deaths were not reported in pregnant women in the studies conducted. In this
302 study, the patients were diagnosed with SARS-CoV-2 infection. Therefore,
303 asymptomatic cases are not emphasized. However, because the clinical symptoms
304 are rare in the findings of our study, the prevalence may be higher among pregnant
305 women. As there is a lack of data in newborns as part of the studies we have
306 included, it could not be covered in this study. As a result, the importance of vertical
307 transmission is not emphasized.

308

309 Based on the limitations reported above, the results need to be supported by more
310 extensive studies with larger sample sizes. Further clinical data are essential to
311 explain the clinical spectrum of the disease. Clinical experience case reports, case
312 series or large observational studies from countries with an increasing number of
313 cases will contribute significantly.

314

315 Pregnant women are sensitive to respiratory pathogens and the development of
316 severe pneumonia, making them more susceptible to COVID-19 infection, especially
317 if they have chronic diseases or complications (Qiao, 2020). Therefore, pregnant
318 women should be considered as an critical risk group in the prevention and treatment
319 of COVID-19 infection. In addition to recent studies, previous pandemic experiences

320 should be considered in the prevention and control of this infection. Our findings will
321 provide valuable guidance for current clinical trials. We are also of the opinion that
322 our results can give an idea about the necessity of using a viral drug in the treatment
323 of SARS - CoV - 2 infections in pregnant women. In summary, pregnant women with
324 SARS-CoV-2 infection should be closely monitored for early diagnosis. Currently,
325 pregnancy may complicate the clinical course of COVID-19, but the fact that the
326 cases in this group are not in the risky age group defined for COVID-19 may give an
327 idea that their condition will not be as bad as in the pregnant tables in MERS or
328 SARS infections (Sun et al., 2020).

329

330 **5. Conclusion**

331 We believe that this research may be critical in determining methods and even saving
332 lives in the early diagnosis and treatment of pregnant women in current and future
333 outbreaks.

334

335 **Data Availability**

336 All data generated or analyzed during this study are included in this article.

337 **Conflicts of interest**

338 The authors declare that there are no conflicts of interest.

339 **Authors' Contributions**

340 BUC designed the research model and determination of these articles to be included
341 in the study. BAB contributed to the realization of the study by applying meta-
342 analysis. Both authors contributed to article selection and data interpretation,
343 reviewed and approved the final article.

344 **Acknowledgments**

345 This work was not supported.

346 We would like to express our gratitude to all healthcare professionals working hard
347 on these challenging days.

348 **Ethical Approval**

349 Approval was not required.

350

351 **References**

- 352 Azhar, E. I., Hui, D. S. C., Memish, Z. A., Drosten, C., & Zumla, A. (2019). The
353 Middle East Respiratory Syndrome (MERS). In *Infectious Disease Clinics of*
354 *North America* (Vol. 33, Issue 4, pp. 891–905). W.B. Saunders.
355 <https://doi.org/10.1016/j.idc.2019.08.001>
- 356 Barendregt, J. J., Doi, S. A., Lee, Y. Y., Norman, R. E., & Vos, T. (2013). Meta-
357 analysis of prevalence. *Journal of Epidemiology and Community Health*, 67(11),
358 974–978. <https://doi.org/10.1136/jech-2013-203104>
- 359 Biscayart, C., Angeleri, P., Lloveras, S., Chaves, T. do S. S., Schlagenhaut, P., &
360 Rodríguez-Morales, A. J. (2020). The next big threat to global health? 2019
361 novel coronavirus (2019-nCoV): What advice can we give to travellers? – Interim
362 recommendations January 2020, from the Latin-American society for Travel
363 Medicine (SLAMVI). In *Travel Medicine and Infectious Disease* (Vol. 33, p.
364 101567). Elsevier USA. <https://doi.org/10.1016/j.tmaid.2020.101567>
- 365 Chan, J. F. W., Yuan, S., Kok, K. H., To, K. K. W., Chu, H., Yang, J., Xing, F., Liu, J.,
366 Yip, C. C. Y., Poon, R. W. S., Tsoi, H. W., Lo, S. K. F., Chan, K. H., Poon, V. K.
367 M., Chan, W. M., Ip, J. D., Cai, J. P., Cheng, V. C. C., Chen, H., ... Yuen, K. Y.
368 (2020). A familial cluster of pneumonia associated with the 2019 novel
369 coronavirus indicating person-to-person transmission: a study of a family cluster.
370 *The Lancet*, 395(10223), 514–523. [https://doi.org/10.1016/S0140-](https://doi.org/10.1016/S0140-6736(20)30154-9)
371 [6736\(20\)30154-9](https://doi.org/10.1016/S0140-6736(20)30154-9)
- 372 Chen, H., Guo, J., Wang, C., Luo, F., Yu, X., Zhang, W., Li, J., Zhao, D., Xu, D.,
373 Gong, Q., Liao, J., Yang, H., Hou, W., & Zhang, Y. (2020). Clinical
374 characteristics and intrauterine vertical transmission potential of COVID-19
375 infection in nine pregnant women: a retrospective review of medical records. *The*
376 *Lancet*, 395(10226), 809–815. [https://doi.org/10.1016/S0140-6736\(20\)30360-3](https://doi.org/10.1016/S0140-6736(20)30360-3)

- 377 Chen, N., Zhou, M., Dong, X., Qu, J., Gong, F., Han, Y., Qiu, Y., Wang, J., Liu, Y.,
378 Wei, Y., Xia, J., Yu, T., Zhang, X., & Zhang, L. (2020). Epidemiological and
379 clinical characteristics of 99 cases of 2019 novel coronavirus pneumonia in
380 Wuhan, China: a descriptive study. *The Lancet*, 395(10223), 507–513.
381 [https://doi.org/10.1016/S0140-6736\(20\)30211-7](https://doi.org/10.1016/S0140-6736(20)30211-7)
- 382 Chen, S, Huang, B., Luo, D. J., Li, X., Yang, F., Zhao, Y., Nie, X., & Huang, B. X.
383 (2020). [Pregnant women with new coronavirus infection: a clinical
384 characteristics and placental pathological analysis of three cases]. *Zhonghua*
385 *Bing Li Xue Za Zhi = Chinese Journal of Pathology*, 49(0), E005.
386 <https://doi.org/10.3760/cma.j.cn112151-20200225-00138>
- 387 Chen, Siyu, Liao, E., Cao, D., Gao, Y., Sun, G., & Shao, Y. (2020). Clinical analysis
388 of pregnant women with 2019 novel coronavirus pneumonia. *Journal of Medical*
389 *Virology*. <https://doi.org/10.1002/jmv.25789>
- 390 Dashraath, P., Lin, J., Wong, J., Xian, M., Lim, K., Li, M. □;, Lim, M., Li, S., Biswas,
391 A., Choolani, M., Mattar, C., Lin, & Su, L. (2020). *Coronavirus disease 2019*
392 *(COVID-19) pandemic and pregnancy*.
393 <https://doi.org/10.1016/j.ajog.2020.03.021>
- 394 Dashraath, P., Wong, J. L. J., Lim, M. X. K., Lim, L. M., Li, S., Biswas, A., Choolani,
395 M., Mattar, C., & Su, L. L. (2020). Coronavirus disease 2019 (COVID-19)
396 pandemic and pregnancy. *American Journal of Obstetrics and Gynecology*.
397 <https://doi.org/10.1016/j.ajog.2020.03.021>
- 398 Guan, W., Ni, Z., Hu, Y., Liang, W., Ou, C., He, J., Liu, L., Shan, H., Lei, C., Hui, D.
399 S., Du, B., Li, L., Zeng, G., Yuen, K.-Y., Chen, R., Tang, C., Wang, T., Chen, P.,
400 Xiang, J., ... Zhong, N. (2020). Clinical characteristics of 2019 novel coronavirus
401 infection in China. *New England Journal of Medicine*, 2020.02.06.20020974.
402 <https://doi.org/10.1101/2020.02.06.20020974>
- 403 Holshue, M. L., DeBolt, C., Lindquist, S., Lofy, K. H., Wiesman, J., Bruce, H.,
404 Spitters, C., Ericson, K., Wilkerson, S., Tural, A., Diaz, G., Cohn, A., Fox, L. A.,
405 Patel, A., Gerber, S. I., Kim, L., Tong, S., Lu, X., Lindstrom, S., ... Pillai, S. K.
406 (2020). First case of 2019 novel coronavirus in the United States. *New England*
407 *Journal of Medicine*, 382(10), 929–936. <https://doi.org/10.1056/NEJMoa2001191>

- 408 Huang, C., Wang, Y., Li, X., Ren, L., Zhao, J., Hu, Y., Zhang, L., Fan, G., Xu, J., Gu,
409 X., Cheng, Z., Yu, T., Xia, J., Wei, Y., Wu, W., Xie, X., Yin, W., Li, H., Liu, M., ...
410 Cao, B. (2020). Clinical features of patients infected with 2019 novel coronavirus
411 in Wuhan, China. *The Lancet*, 395(10223), 497–506.
412 [https://doi.org/10.1016/S0140-6736\(20\)30183-5](https://doi.org/10.1016/S0140-6736(20)30183-5)
- 413 Hui, D. S. (2017). Epidemic and Emerging Coronaviruses (Severe Acute Respiratory
414 Syndrome and Middle East Respiratory Syndrome). In *Clinics in Chest Medicine*
415 (Vol. 38, Issue 1, pp. 71–86). W.B. Saunders.
416 <https://doi.org/10.1016/j.ccm.2016.11.007>
- 417 Lam, C. M., Wong, S. F., Leung, T. N., Chow, K. M., Yu, W. C., Wong, T. Y., Lai, S.
418 T., & Ho, L. C. (2004). A case-controlled study comparing clinical course and
419 outcomes of pregnant and non-pregnant women with severe acute respiratory
420 syndrome. *BJOG: An International Journal of Obstetrics and Gynaecology*,
421 111(8), 771–774. <https://doi.org/10.1111/j.1471-0528.2004.00199.x>
- 422 Li, N., Han, L., 2^, M., Peng, M., Lv, Y., Ouyang, Y., Liu, K., Yue, L., Li, Q., Sun, G.,
423 Chen, L., & Yang, L. (n.d.). *Maternal and neonatal outcomes of pregnant women*
424 *with COVID-19 pneumonia: a case-control study*.
425 <https://doi.org/10.1093/cid/ciaa352/5813589>
- 426 Li, Q., Guan, X., Wu, P., Wang, X., Zhou, L., Tong, Y., Ren, R., Leung, K. S. M., Lau,
427 E. H. Y., Wong, J. Y., Xing, X., Xiang, N., Wu, Y., Li, C., Chen, Q., Li, D., Liu, T.,
428 Zhao, J., Liu, M., ... Feng, Z. (2020). Early Transmission Dynamics in Wuhan,
429 China, of Novel Coronavirus–Infected Pneumonia. *New England Journal of*
430 *Medicine*, 382(13), 1199–1207. <https://doi.org/10.1056/NEJMoa2001316>
- 431 Liu, D., Li, L., Wu, X., Zheng, D., Wang, J., Yang, L., & Zheng, C. (2020). Pregnancy
432 and Perinatal Outcomes of Women With Coronavirus Disease (COVID-19)
433 Pneumonia: A Preliminary Analysis. *American Journal of Roentgenology*, 1–6.
434 <https://doi.org/10.2214/AJR.20.23072>
- 435 Liu, H., Liu, F., Li, J., Zhang, T., Wang, D., & Lan, W. (2020). Clinical and CT imaging
436 features of the COVID-19 pneumonia: Focus on pregnant women and children.
437 *Journal of Infection*, 80(5), e7–e13. <https://doi.org/10.1016/j.jinf.2020.03.007>
- 438 Liu, J., Zheng, X., Tong, Q., Li, W., Wang, B., Sutter, K., Trilling, M., Lu, M., Dittmer,

- 439 U., & Yang, D. (2020). Overlapping and discrete aspects of the pathology and
440 pathogenesis of the emerging human pathogenic coronaviruses SARS-CoV,
441 MERS-CoV, and 2019-nCoV. In *Journal of Medical Virology* (Vol. 92, Issue 5,
442 pp. 491–494). John Wiley and Sons Inc. <https://doi.org/10.1002/jmv.25709>
- 443 Moher, D., Shamseer, L., Clarke, M., Ghersi, D., Liberati, A., Petticrew, M., Shekelle,
444 P., Stewart, L. A., & Group, P.-P. (2015). *Preferred reporting items for systematic
445 review and meta-analysis protocols (PRISMA-P) 2015 statement*.
446 <https://doi.org/10.1186/2046-4053-4-1>
- 447 Pringle, K. G., Tadros, M. A., Callister, R. J., & Lumbers, E. R. (2011). The
448 expression and localization of the human placental prorenin/renin- angiotensin
449 system throughout pregnancy: Roles in trophoblast invasion and angiogenesis?
450 *Placenta*, 32(12), 956–962. <https://doi.org/10.1016/j.placenta.2011.09.020>
- 451 Qiao, J. (2020). What are the risks of COVID-19 infection in pregnant women? In *The
452 Lancet* (Vol. 395, Issue 10226, pp. 760–762). Lancet Publishing Group.
453 [https://doi.org/10.1016/S0140-6736\(20\)30365-2](https://doi.org/10.1016/S0140-6736(20)30365-2)
- 454 Ren, L. L., Wang, Y. M., Wu, Z. Q., Xiang, Z. C., Guo, L., Xu, T., Jiang, Y. Z., Xiong,
455 Y., Li, Y. J., Li, H., Fan, G. H., Gu, X. Y., Xiao, Y., Gao, H., Xu, J. Y., Yang, F.,
456 Wang, X. M., Wu, C., Chen, L., ... Wang, J. W. (2020). Identification of a novel
457 coronavirus causing severe pneumonia in human: a descriptive study. *Chinese
458 Medical Journal*. <https://doi.org/10.1097/CM9.0000000000000722>
- 459 Rodríguez-Morales, A., ... K. M.-T. medicine and, & 2020, undefined. (n.d.). Going
460 global—Travel and the 2019 novel coronavirus. *Ncbi.Nlm.Nih.Gov*. Retrieved May
461 21, 2020, from <https://www.ncbi.nlm.nih.gov/pmc/articles/PMC7128681/>
- 462 Rodríguez-Morales, A. J., Cardona-Ospina, J. A., Gutiérrez-Ocampo, E., Villamizar-
463 Peña, R., Holguin-Rivera, Y., Escalera-Antezana, J. P., Alvarado-Arnez, L. E.,
464 Bonilla-Aldana, D. K., Franco-Paredes, C., Henao-Martinez, A. F., Paniz-
465 Mondolfi, A., Lagos-Grisales, G. J., Ramírez-Vallejo, E., Suárez, J. A.,
466 Zambrano, L. I., Villamil-Gómez, W. E., Balbin-Ramon, G. J., Rabaan, A. A.,
467 Harapan, H., ... Sah, R. (2020). Clinical, laboratory and imaging features of
468 COVID-19: A systematic review and meta-analysis. *Travel Medicine and
469 Infectious Disease*, 101623. <https://doi.org/10.1016/j.tmaid.2020.101623>

- 470 Rousseau, M. J., & Evans, J. C. (2017). Key statistical assumptions and methods in
471 one-arm meta-analyses with binary endpoints and low event rates, including a
472 real-life example in the area of endoscopic colonic stenting. *Cogent Medicine*,
473 4(1). <https://doi.org/10.1080/2331205x.2017.1334318>
- 474 SH Alfaraj. (2019). *Middle East Respiratory Syndrome Coronavirus (MERS-CoV)*
475 *infection during pregnancy: Report of two cases & review of the literature*
476 **KEYWORDS**. <https://doi.org/10.1016/j.jmii.2018.04.005>
- 477 Stang, A. (2010). Critical evaluation of the Newcastle-Ottawa scale for the
478 assessment of the quality of nonrandomized studies in meta-analyses. In
479 *European Journal of Epidemiology* (Vol. 25, Issue 9, pp. 603–605). Eur J
480 Epidemiol. <https://doi.org/10.1007/s10654-010-9491-z>
- 481 Sun, P., Qie, S., Liu, Z., Ren, J., Li, K., & Xi, J. (2020). Clinical characteristics of
482 hospitalized patients with SARS-CoV-2 infection: A single arm meta-analysis.
483 *Journal of Medical Virology*, 92(6), 612–617. <https://doi.org/10.1002/jmv.25735>
- 484 The Lancet. (2020). Emerging understandings of 2019-nCoV. In *The Lancet* (Vol.
485 395, Issue 10221, p. 311). Lancet Publishing Group.
486 [https://doi.org/10.1016/S0140-6736\(20\)30186-0](https://doi.org/10.1016/S0140-6736(20)30186-0)
- 487 Viechtbauer, W. (2010). Conducting Meta-Analyses in R with the **metafor** Package.
488 *Journal of Statistical Software*, 36(3), 1–48. <https://doi.org/10.18637/jss.v036.i03>
- 489 Wang, C., Horby, P. W., Hayden, F. G., & Gao, G. F. (2020). A novel coronavirus
490 outbreak of global health concern. In *The Lancet* (Vol. 395, Issue 10223, pp.
491 470–473). Lancet Publishing Group. [https://doi.org/10.1016/S0140-](https://doi.org/10.1016/S0140-6736(20)30185-9)
492 [6736\(20\)30185-9](https://doi.org/10.1016/S0140-6736(20)30185-9)
- 493 Wu, C., Yang, W., Wu, X., Zhang, T., Zhao, Y., Ren, W., & Xia, J. (2020). Clinical
494 Manifestation and Laboratory Characteristics of SARS-CoV-2 Infection in
495 Pregnant Women. *Virologica Sinica*, 1. [https://doi.org/10.1007/s12250-020-](https://doi.org/10.1007/s12250-020-00227-0)
496 [00227-0](https://doi.org/10.1007/s12250-020-00227-0)
- 497 Wu, X., Sun, R., Chen, J., Xie, Y., Zhang, S., & Wang, X. (2020). Radiological
498 findings and clinical characteristics of pregnant women with COVID-19
499 pneumonia. *International Journal of Gynecology & Obstetrics*.
500 <https://doi.org/10.1002/ijgo.13165>

- 501 Xie, L., Liu, Y., Xiao, Y., Tian, Q., Fan, B., Zhao, H., & Chen, W. (2005). Follow-up
502 study on pulmonary function and lung radiographic changes in rehabilitating
503 severe acute respiratory syndrome patients after discharge. *Chest*, 127(6),
504 2119–2124. <https://doi.org/10.1378/chest.127.6.2119>
- 505 yang, H., Sun, G., Tang, F., Peng, M., Gao, Y., Peng, J., Xie, H., Zhao, Y., & Jin, Z.
506 (2020). Clinical features and outcomes of pregnant women suspected of
507 coronavirus disease 2019. *Journal of Infection*.
508 <https://doi.org/10.1016/j.jinf.2020.04.003>
- 509 Yu, N., Li, W., Kang, Q., Xiong, Z., Wang, S., Lin, X., Liu, Y., Xiao, J., Liu, H., Deng,
510 D., Chen, S., Zeng, W., Feng, L., & Wu, J. (2020). Clinical features and obstetric
511 and neonatal outcomes of pregnant patients with COVID-19 in Wuhan, China: a
512 retrospective, single-centre, descriptive study. *The Lancet Infectious Diseases*,
513 20(5), 559–564. [https://doi.org/10.1016/S1473-3099\(20\)30176-6](https://doi.org/10.1016/S1473-3099(20)30176-6)
- 514 Zhang, L., Jiang, Y., Wei, M., Cheng, B. H., Zhou, X. C., Li, J., Tian, J. H., Dong, L.,
515 & Hu, R. H. (2020). Analysis of the pregnancy outcomes in pregnant women with
516 COVID-19 in Hubei Province. *Zhonghua Fu Chan Ke Za Zhi*, 55(3), E009.
517 <https://doi.org/10.3760/cma.j.cn112141-20200218-00111>
- 518 Zhao, X., Jiang, Y., Zhao, Y., Xi, H., Liu, C., Qu, F., & Feng, X. (2020). Analysis of
519 the susceptibility to COVID-19 in pregnancy and recommendations on potential
520 drug screening. *European Journal of Clinical Microbiology & Infectious Diseases*
521 2020, 1–12. <https://doi.org/10.1007/S10096-020-03897-6>
- 522 Zhao, Y., Zhao, Z., Wang, Y., Zhou, Y., Ma, Y., & Zuo, W. (2020). Single-cell RNA
523 expression profiling of ACE2, the putative receptor of Wuhan 2019-nCov.
524 *BioRxiv Preprint Doi: <https://doi.org/10.1101/2020.01.26.919985>*.
525 <https://doi.org/10.1101/2020.01.26.919985>
- 526 Zhou, P., Yang, X. Lou, Wang, X. G., Hu, B., Zhang, L., Zhang, W., Si, H. R., Zhu, Y.,
527 Li, B., Huang, C. L., Chen, H. D., Chen, J., Luo, Y., Guo, H., Jiang, R. Di, Liu, M.
528 Q., Chen, Y., Shen, X. R., Wang, X., ... Shi, Z. L. (2020). A pneumonia outbreak
529 associated with a new coronavirus of probable bat origin. *Nature*, 579(7798),
530 270–273. <https://doi.org/10.1038/s41586-020-2012-7>
- 531 Zhu, H., Wang, L., Fang, C., Peng, S., Zhang, L., Chang, G., Xia, S., & Zhou, W.

532 (2020). Clinical analysis of 10 neonates born to mothers with 2019-nCoV
533 pneumonia. *Translational Pediatrics*, 9(1), 51–60.
534 <https://doi.org/10.21037/tp.2020.02.06>
535