

# 1 Environmental and social analysis as risk factors for the spread of the 2 novel coronavirus (SARS-CoV-2) using remote sensing, GIS and analytical 3 hierarchy process (AHP): Case of Peru

4 Edwin Badillo-Rivera<sup>1\*</sup>, Anthony Fow-Esteves<sup>1</sup>, Fernando Alata-López<sup>1</sup>, Paul Virú-Vásquez<sup>1</sup>, Martha  
5 Medina-Acuña<sup>2</sup>

6 Faculty of Environmental Engineering and Natural Resources, National University of Callao, Av.  
7 Juan Pablo II 306, Bellavista-Callao<sup>1</sup>.

8 Faculty of Environmental Engineering, National University of Engineering, Av. Túpac Amaru 210,  
9 Rímac<sup>2</sup>

10 Corresponding author: edbadillorivera@gmail.com\*; +51 972760682

## 12 HIGHLIGHTS

- 13 • 68% of the regions are at a "high" and "very high" risk of spreading of SARS-CoV-2
- 14 • Tropospheric NO<sub>2</sub> concentration and number of cases of COVID-19 are related directly
- 15 • Cases of COVID-19 are linked to tropospheric NO<sub>2</sub> and vertical airflow to 0 Pa/s
- 16 • Environmental and social factors are analyzed together in the regions of Peru

## 18 ABSTRACT

19 The novel coronavirus disease (COVID-19) generated by the SARS-CoV-2 virus was originated in the  
20 city of Wuhan (China) in December 2019, the virus began to spread in other regions of China until it  
21 spread to the rest of the world. In this research, an analysis was made of environmental factors  
22 (tropospheric column of NO<sub>2</sub>, vertical airflow, percentage of solid waste disposed of in open dumps and  
23 percentage of the population without any mechanism of faeces disposal) and social factors (levels of  
24 monetary poverty, percentage of the number of hospitals per population and vulnerable population) that  
25 could directly and indirectly affect the spread of SARS-CoV-2 virus in the regions of Peru. Remote  
26 sensing techniques, geographic information systems and an analysis under the multi-parametric  
27 statistical approach proposed by Saaty were used to determine which regions present greater  
28 susceptibility, vulnerability and risk of spreading the SARS-CoV-2 virus. The results show that the  
29 prevalence of high values of tropospheric NO<sub>2</sub> and values close to 0 Pa/s of the vertical airflow were  
30 directly related to the number of positive cases by COVID-19. In addition, it was found that 68% of the  
31 regions of Peru are at a "high" and "very high" risk of spreading SARS-CoV-2 virus, and most of them

**NOTE: This preprint reports new research that has not been certified by peer review and should not be used to guide clinical practice.**

32 are in northern and central Peru (Callao, Tumbes, Piura, Loreto, Lambayeque, Huancavelica,  
33 Amazonas, Cajamarca, Ucayali, Huanuco and among others), therefore, special care should be taken  
34 with the measures adopted after social isolation in order to avoid the resurgence and collapse of the of  
35 health systems. It concludes that public policies on air quality management, integrated solid waste  
36 management and sanitation services should be improved in order to reduce the risk of spreading the  
37 SARS-CoV-2 virus. This research can be replicated on a longer scale, including more variables.

38 **Keywords:**

39 SARS-CoV-2, Analytic hierarchy process (AHP), Risk assessment, Remote Sensing, GIS.

40

41

42

43

44

45

46

47

48

49

50

51

52

53

54

55

56

57

58

59

## 60 1. INTRODUCTION

61 The novel coronavirus disease (COVID-19) caused by the SARS-CoV-2 virus was originated in China,  
62 the first reported case took place in Wuhan in December 2019. Eventually, the virus started to spread  
63 in other regions of China and on January 30, 2020, the World Health Organization (WHO) declared the  
64 COVID-19 outbreak as an International Public Health Emergency (WHO, 2020a). There are not vaccine  
65 or control disease medicine available yet (Chakraborty & Maity, 2020), so the social distance is widely  
66 adopted as the principal preventive measure (Wilder-Smith & Freedman, 2020). The infection is  
67 spreading from day to day and the health system struggles to care each infected individual, particularly  
68 in countries where the infection rate has an exponential growth, such as USA, Italy, Spain, etc. (Madurai  
69 Elavarasan & Pugazhendhi, 2020). During the spreading time of the COVID-19 disease, the scientific  
70 community shows its participation worldwide with a lot of researches, such as scientific articles,  
71 reviews, short communications and preprints (W. Ahmed et al., 2020; Chen et al., 2020; Ogen, 2020;  
72 X. Sun et al., 2020; Zambrano-monserrate et al., 2020); likewise, a diversity of approaches of the impact  
73 of COVID-19 have been analyzed in different scientific fields, mainly in medicine and mental health  
74 (Lou et al., 2020; Rajkumar, 2020). Moreover, due to the situation worldwide, environmental research  
75 are increasing, specifically in the relationship between the SARS-CoV-2 virus and environmental  
76 factors such as air, water and solid waste, it is important to know that researches are still sparse, but it  
77 is worth mentioning that these research are still scarce but they warn of some consequences that not  
78 considering them in the public policies adopted by the government could bring.

79 Reports and short communications have been shown that the concentrations measured in the soil and  
80 from remote sensing have a significant reduction in terms of NO<sub>2</sub> and PM<sub>2.5</sub> (Euronews, 2020). For  
81 instance, Chen et al. (2020) reported that the NO<sub>2</sub> concentration decrease by 22.8 ug/m<sup>3</sup> and the PM<sub>2.5</sub>,  
82 by 1.4 ug/m<sup>3</sup> during the quarantine in Wuhan, while, throughout China the concentration of NO<sub>2</sub>  
83 decrease in 12.9 ug/ m<sup>3</sup> and the PM<sub>2.5</sub>, in 18.9 ug/ m<sup>3</sup>, Ogen (2020) analyzed the fatality rate of COVID-  
84 19 in Germany, France, Spain and Italy using remote sensing, concluding that long exposure to the NO<sub>2</sub>  
85 could be one of the main contributors to the mortality caused by COVID-19 in those regions; in addition,  
86 to other exploratory researches which analyze air quality and its relationship between the infected rate  
87 and the fatality rate of COVID-19, they are important and necessary in order to be discussed (Conticini

88 et al., 2020; Zhu et al., 2020). In Peru, MINAM (2020a) reported that during the social isolation, the  
89 PM<sub>2.5</sub> reduced its value under 10 ug/m<sup>3</sup>, being the lowest average in the last 3 years; however, the  
90 common level of PM<sub>2.5</sub> in March, 2018 and 2019 were 75 and 44 ug/m<sup>3</sup>, respectively; higher than the  
91 WHO recommendation (10 ug/m<sup>3</sup> to PM 2.5). Therefore, under normal conditions of industrial activities  
92 and vehicle fleet, there could be a high relationship between the number of positive cases of COVID-  
93 19 and the high level of pollution.

94 There are evidences that the SARS-CoV-2 virus prevails in the faeces of the infected humans. Although,  
95 its residence time in the faeces is still unknown, therefore, it represents a risk for the human health, not  
96 only for a person, but also the janitor staff and wastewater treatment plants (WWT) workers (Guan et  
97 al., 2020; Yong Zhang et al., 2020). In Latin America, only 20% of the total wastewater have treatment  
98 (Banco Mundial, 2015). In Peru, according to a report showed by INEI (2016), in the urban areas the  
99 public sewerage system coverage is 88%, in the countryside the situation is alarming because the  
100 coverage of the public sewerage system is under 18%, being the septic tank, rivers, ditch or canal the  
101 only scenario to eliminate the faeces.

102 Some researches point that an inadequate solid waste management could generate the spread of SARS-  
103 CoV-2 in the management cycle of the solid waste, including its workers (Nzediegwu & Chang, 2020;  
104 van Doremalen et al., 2020). In Latin America countries exist a high predominance of open dumps  
105 because it is the faster disposal method (Ziegler-Rodriguez et al., 2019); however, this method of solid  
106 waste final disposal does not take in consideration the sanitary conditions. Institutions like ACR+  
107 (2020), ISWA (2020) and SWANA (2020) consider important to prevent the spread of COVID-19 in  
108 those situations, for this reason, countries like USA and Italy have restricted recycling and segregation  
109 programs (Zambrano-Monserrate et al., 2020), an opposite situation is taking place in Peru since there  
110 is a law that prioritizes the recycling of industrial inorganic solid waste as an economic activity, after the  
111 social isolation (MINAM, 2020b); moreover, according to MINAM (2020) in Peru, approximately 73%  
112 of solid waste ends up in open dumps, and it could be a way to spread the SARS-CoV-2 virus.

113 It is known that SARS-CoV-2 virus can survive only few hours in the environment, and it could be  
114 enough to drive the virus to other organism and change its features, so it is necessary to take multiple  
115 scenarios into account to the near future (Núñez-Delgado, 2020); until now, the analysis of the

116 environment factors with regard to this novel disease have been studied individually and analysis that  
117 integrates social and environmental factors is necessary, whereby, the aim of this research is to analyze  
118 individually, the social and environmental factors which affects directly or indirectly the spread of  
119 SARS-CoV-2 virus using remote sensing methods, Geographic Information System and to analyze  
120 them under the deterministic multi-parametric statistical approach by Saaty (1980). Analytic Hierarchy  
121 Process (AHP) of Saaty and the perspective of the epidemiological triad (agent, host and environment)  
122 are essential to group factors and determine the regions of Peru which are susceptible to the spread of  
123 the SARS-CoV-2 virus (Méndez-Martínez et al., 2018).

## 124 **2. MATERIALS AND METHODS**

125 The scope of research is Peru and the analysis were carried out in the regions of Peru, that is, the 24  
126 regions of the country and the constitutional province of Callao were considered.

### 127 **2.1 Environmental factors**

#### 128 *2.1.1 Tropospheric NO<sub>2</sub> column (TCNO<sub>2</sub>)*

129 Monitoring conditions of the air quality using remote sensing is important for health researches  
130 (Putrenko & Pashynska, 2017), in large geographical areas and very fine temporal resolution (Omrani  
131 et al., 2020). NO<sub>2</sub> data in the tropospheric air column was obtained from the Sentinel-5P satellite of the  
132 tropospheric monitoring instrument-TROPOMI (Eskes et al., 2019). In this research the period of  
133 typical exposure to NO<sub>2</sub> long term was defined as a period of 3.5 months, that is, from January 1, 2020  
134 to March 14, 2020, one day before the Peruvian government decreed the period of social isolation  
135 (Diario Oficial El Peruano, 2020b); furthermore, for the purpose of showing the reduction of NO<sub>2</sub>, the  
136 period March 16 to April 20 was analyzed. For each period, the NO<sub>2</sub> average was made using the Google  
137 Earth Engine platform, these rasters were exported and worked in GIS (QGIS); where the average pixels  
138 for each region of Peru were calculated before and after quarantine.

#### 139 *2.1.2 Vertical airflow (VA-O)*

140 VA-O is an important parameter to analyze the stability of vertical airflow in the troposphere on a  
141 synoptic scale (Räisänen, 1995). For this, airflow (Pa/s) values were used to estimate the vertical  
142 velocity in positive and negative values, where the latter indicates that the airflow pattern is from bottom  
143 to top and the positive values indicate that the airflow is from top to bottom. The hypothesis that is

144 assumed to be affirmative is that in regions where negative values of omega prevail, it will favor a better  
145 circulation and dispersion of pollutants, preventing them from remaining on the surface and taking them  
146 to a higher altitude; on the contrary, in areas where there is airflow positive value or close to 0  
147 (atmospheric stability) will be regions where there is a greater permanence of atmospheric pollutants.  
148 The data used for airflow was products derived from Reanalysis 1 NCEP / NCAR downloaded from  
149 the NOAA / ESRL Physical Sciences Laboratory web platform (<https://psl.noaa.gov/>, accessed  
150 04/30/2020), Data analyzed correspond to the monthly average airflow for the year 2019 and at a height  
151 of 850 hPa (~ 1500 m altitude).

### 152 *2.1.3 Percentage of population without any faeces disposal mechanism (WED)*

153 The information represented the number of people by region that did not present sanitation services  
154 through the public sewerage system. To date, the presence of the SARS-CoV-2 virus has not been  
155 detected in the wastewater of Peru; however, Rosa et al. (2020) mentions that the presence of the SARS-  
156 CoV-2 virus has been reported in wastewater around the world, for example, countries such as Australia,  
157 USA, France, Italy and the Netherlands (W. Ahmed et al., 2020; Medema et al., 2020; Rosa, Iaconelli,  
158 et al., 2020; F. Wu et al., 2020; Wurtzer et al., 2020). The information regarding WED was extracted  
159 from INEI (2016).

### 160 *2.1.4 Percentage of solid waste disposal in open dumps (SWO)*

161 The variable reflects the percentage of the waste generated in the population and it has established  
162 environments without sanitary measures (open dumps); it should be noted that people (children and  
163 adults) work in these places doing informal recycling tasks (RPP Noticias, 2019). Peru disposes about  
164 72% of its solid waste in the more than 1500 open dumps recorded by the Ministry of the Environment  
165 as areas degraded by solid waste (INEI, 2018b; OEFA, 2018) , the percentage of solid waste disposed  
166 of in open dumps in each region of Peru was extracted from INEI (2018b).

## 167 **2.2 Social factors**

### 168 *2.2.1 Vulnerable population (VP)*

169 The vulnerable population in Peru (children under 14 and adults over 60 years old) represent 38.29%  
170 of the total population (INEI, 2017), this percentage of the total population faces different obstacles  
171 (particularly infections and diseases) during critical situations, these obstacles are also related to

172 socioeconomic conditions, according to INEI (2017), one third of children under 14 and adults over 60  
173 years old are poor . Information on the vulnerable population was extracted from INEI (2017).

#### 174 *2.2.2 Percentage of the number of hospitals per population (NHP)*

175 According to INEI (2018), Peru has 19859 infrastructures in the health sector distributed in the 25  
176 regions of Peru, including: hospitals, health centers, health posts, health institutes specialized, medical  
177 clinics and dental centers, for this research, only the data from hospitals were extracted, due to these are  
178 the main infrastructure of the health sector that welcomes people infected COVID-19 in Peru. The  
179 information was extracted on April 24, 2020 from the INEI web portal  
180 (<http://m.inei.gob.pe/estadisticas/indice-tematico/health-sector-establishments/>, accessed 17/05/2020).

181 It is important to mention that for the generation of the percentage, the number of hospitals was  
182 multiplied by a factor of 100000 and it was divided by the total population registered in last national  
183 census.

#### 184 *2.2.3 Monetary poverty (MP)*

185 The monetary poverty data provided by INEI (2019), groups the regions of Peru into five, This data  
186 reflects that regions have a great population without the ability to acquire a basic basket of food and  
187 non-food (housing, clothing, education, health, transportation, etc.), the data was extracted from (INEI,  
188 2019)

### 189 **2.3 Analytic hierarchy process (AHP)**

190 The analytic hierarchy process (AHP) is a powerful multi-criteria method introduced by Thomas Saaty,  
191 that helps to make decisions in the face of complex problems that have multiple conflicting and  
192 subjective criteria (Saaty, 1980, 1986, 1990). The AHP has been used as a tool for decision making in  
193 different fields of science, such as health (Requia et al., 2020), natural science (Lin et al., 2020) and  
194 engineering (Yin Zhang et al., 2020; Zhou & Yang, 2020). AHP begins by defining the problem to solve  
195 (the objective) and decomposing the problem into a hierarchy of decisions (Vassou et al., 2006), then a  
196 paired comparison is used between the criteria with respect to the objective, as well as among the  
197 alternatives with respect to each criterion, with a view to establishing priorities among the elements of  
198 the hierarchy. These comparisons use a scale of values from one to nine. (see **Table 1**) determined by  
199 Saaty (1980). Finally, the relative weights of the elements of each level of the hierarchical model are

200 estimated, the value of the global priorities of the alternatives and inconsistency (coherence) are  
201 calculated (Labib, 2014).

202 [Place Table 1 here]

203 [Place Figure 1 here]

204 As a summary, **Table 2** shows all the environmental and social factors used. An individual analysis was  
205 carried out between the number of positive cases for COVID-19 in each region and factor, while in the  
206 AHP, the environmental factors were used in the susceptibility analysis and the social factors were used  
207 in the vulnerability analysis.

208 [Place Table 2 here]

### 209 **3. RESULTS**

#### 210 **3.1 Environmental factors**

211 **Fig. 2** shows the tropospheric NO<sub>2</sub> distribution map before (daily average from January 1 to March 14,  
212 2020) and after (March 16 to April 20, 2020) of the period of social isolation for the regions of Peru,  
213 while **Fig. 3** shows the vertical airflow map (Pa/s). **Fig. 4a** shows the positive cases for COVID-19,  
214 TCNO<sub>2</sub> and VA-O. The greatest positive cases of COVID-19 occurred in Callao (2933 cases), Lima  
215 (20048 cases), Lambayeque (1814 cases), Piura (960 cases) and Loreto (881 cases), and they are some  
216 of these regions where observed the highest average tropospheric NO<sub>2</sub> concentrations before the period  
217 of social isolation such as in Callao (41 umol / m<sup>2</sup>), Lima (16 umol / m<sup>2</sup>) and Lambayeque (10 umol /  
218 m<sup>2</sup>). In addition, in these regions were observed that vertical airflows are closer to 0. In **Fig. 4b**, It is  
219 noted that the regions that concentrated more than 40% of WED are Loreto and Ucayali; moreover,  
220 these were among the 10 regions with the highest number of positive cases due to COVID-19  
221 nationwide, while Callao, Lima and Tacna, concentrate less than 2% of the population that does not  
222 have faeces disposal mechanisms; however, the regions of Callao and Lima showed the highest number  
223 of people affected by COVID-19. **Fig. 4b** shows that in the regions where there are a greater number of  
224 positive cases of COVID-19, they showed SWO greater than 65%, such is the case of Lima, Callao,  
225 Lambayeque, Piura, Loreto, among others. It was noted that in all the regions of Peru there is a trend of  
226 final disposal of solid waste in open dumps greater than 45%, only in Callao it is 0% because it does  
227 not have open dumps (MINAM, 2020c).



228 [Place Figure 2 here]

229 [Place Figure 3 here]

230 [Place Figure 4 here]

### 231 **3.2 Social factors**

232 **Fig. 5a** shows that on average, the percentage of hospitals per 100000 inhabitants in all regions is 1-2,  
233 even in the first 5 regions that present a greater number of positive cases for COVID-19. Regarding the  
234 vulnerable population, that is, people under 14 and over 60 years old, it is shown that in the first five  
235 regions where there are more positive cases, there are less vulnerable population. In general, it is  
236 observed that in all regions of Peru there are between 30% and 45% of vulnerable population; finally,  
237 in **Fig. 5b**, Lima, Callao, La Libertad, Piura and Loreto are the regions with the highest number of  
238 COVID-19 cases. Also, they are in group 2 to 4 of monetary poverty, on a scale of 1 to 5, where group  
239 1 represents regions with less monetary poverty in Peru, while group 5 is the region with greater  
240 monetary poverty.

241 [Place Figure 5 here]

### 242 **3.3 Analytic hierarchy process**

#### 243 *3.3.1 Susceptibility factors*

244 **Table 3** shows the relative weight values obtained from the pair-wise comparison matrix. These indicate  
245 that tropospheric NO<sub>2</sub> and vertical airflow are the most important parameters with values of 0.435 and  
246 0.407 respectively, followed by the percentage of the population without wastewater treatment with a  
247 value of 0.106; finally, the disposal of solid waste at dumps with a value of 0.052. The consistency ratio  
248 index (CR) is 0.032, value that indicates an adequate degree of consistency in the weight of each factor  
249 analyzed.

250 [Place Table 3 here]

251 The four environmental factors are integrated into the susceptibility index of the regions of Peru against  
252 the SAR-CoV-2 ( $IS_{SC2}$ ) virus that is expressed as a weighted linear sum as shown in the **Eq. (1)**.

$$253 \quad IS_{SC2} = 0.43xTCNO2 + 0.407xVA - O + 0.106xWED + 0.052xSWO \quad (1)$$

#### 254 *3.3.2 Vulnerability factors*

255 The values of the relative weights of the vulnerability factors analyzed obtained from the hierarchical  
256 analysis of Saaty are shown in **Table 4**, these indicate that the health facilities per population is the most  
257 important parameter 0.584, followed by the vulnerable population 0.297 that is, people under 14 and  
258 over 60 years old. Finally, monetary poverty with a value of 0.118.

259 [Place Table 4 here]

260 In order to integrate the three factors analyzed and determine the vulnerability levels of the populations  
261 in the regions of Peru, the vulnerability index against the SAR-CoV-2 virus ( $IV_{SC2}$ ) was used, which is  
262 expressed as a weighted linear sum as shown in the **Eq. (2)**.

$$263 \quad IV_{SC2} = 0.557xNHP + 0.320xVP + 0.123xMP \quad (2)$$

264 The risk levels by region against the SAR-CoV-2 virus are obtained from the product of the values of  
265 the levels of susceptibility and vulnerability (CENEPRED, 2015). **Fig. 6** shows the maps of  
266 susceptibility, vulnerability and risk at the regional level of Peru against the SAR-CoV-2 virus, the  
267 classification was made in four levels (low, medium, high and very high) according to the classification  
268 of the method (Pourghasemi et al., 2012).

269 [Place Figure 6 here]

270 Regions as Lambayeque, Callao, Tumbes and Lima showed a "very high" level of susceptibility to the  
271 spread of the SARS-CoV-2 virus; furthermore, La Libertad, Piura, Loreto, Ancash, Cajamarca,  
272 Amazonas, Ica, San Martin, Huancavelica and Pasco showed a "high" susceptibility level, most of these  
273 regions are located in the north and on the central coast of Peru, the other regions are at a "medium"  
274 and "low" (Cusco). It is worth mentioning that all the regions with "very high" susceptibility are found  
275 on the coast of Peru; regarding the levels of vulnerability, it was found that Huancavelica, Huanuco,  
276 Ucayali, Amazonas and Loreto showed a "very high" level of vulnerability to the spread of the SARS-  
277 CoV-2 virus. In terms of the regions that presented a level of "high" vulnerability, six of these are in  
278 southern (Moquegua, Apurimac, Cusco and Arequipa), two in the center (Pasco and Callao) and three  
279 in northern (Tumbes, Piura, Cajamarca and Ancash), the others regions are at a "medium" and "low"  
280 level of vulnerability. Regarding risk, Callao and Tumbes have a "very high" level, Piura, Loreto,  
281 Lambayeque, Huancavelica, Amazonas, Cajamarca, Ucayali, Huanuco, Ancash, Moquegua, Pasco,

282 Ayacucho, San Martín, La Libertad and Apurímac have a level of "high"; all other regions showed a  
283 "medium" level of risk.

#### 284 **4. DISCUSSION**

285 In the preliminary stage of the COVID-19 outbreak, a lot of research have managed to forecast in  
286 advance the dynamics of possible outbreaks using various methodologies (Hellewell et al., 2020; Ren  
287 et al., 2020; Roosa et al., 2020; K. Sun et al., 2020; Z. Wu & McGoogan, 2020). Based on that, useful  
288 evidences have been provided for the health sectors in different countries. This research is based on the  
289 individual analysis and the AHP of 8 factors that could identify those regions of Peru that are most  
290 susceptible to the risk of COVID-19 infection.

#### 291 **4.1 Environmental factors**

292 According to TCNO<sub>2</sub> over the regions of Peru, a notable reduction is observed before and after the  
293 quarantine period established by the Peruvian government of up to three times in regions with high  
294 population density, intensive industrial activity and a great activity of the automotive park such as  
295 Arequipa, Callao, Lima and Piura. The highest tropospheric NO<sub>2</sub> concentration values or 'hotspot' are  
296 distributed in regions of the northern coasts, central coast and part of the south coast of Peru, some of  
297 them are Lima, Callao, Lambayeque and Piura, being these the regions where recorded higher positive  
298 cases for COVID-19. On the other hand, the Amazon region presents the lowest tropospheric NO<sub>2</sub>  
299 concentration value, and that region is among the ten regions with the lowest number of confirmed  
300 COVID-19 cases. Therefore, it is possible that there is a direct relationship between the amount of  
301 tropospheric NO<sub>2</sub> concentration and the number of confirmed COVID-19 cases (Ogen, 2020). In  
302 addition, Wu et al. (2020) researched that long-term exposure to poor air quality could exacerbate  
303 COVID-19 symptoms, and even the risk of mortality from this disease. Regarding VA-O, it is observed  
304 that its highest value ( $< -0.02$  Pa / s), value close to 0 (which represents a stability of vertical air flow),  
305 has been detected in the Loreto region, which it is within the five regions with the highest number of  
306 confirmed COVID-19 cases. Likewise, the lowest value of VA-O has been detected in the Puno region  
307 ( $> -0.16$  Pa/s), which is within the five regions with the lowest number of confirmed COVID-19 cases.  
308 Therefore, it is possible that there is a direct relationship between the regions that have a more stable  
309 VA-O (calm condition and favoring the concentration of pollutants) and the number of confirmed cases

310 of COVID-19. In summary, over the regions of Peru, it founds that those with the highest number of  
311 infected by COVID-19, there is a prevalence of high tropospheric NO<sub>2</sub> and vertical airflow values very  
312 close to 0 Pa/s. That is, they are areas where atmospheric stability conditions prevail, this conditions  
313 that not only tropospheric NO<sub>2</sub>, but also that other atmospheric pollutants are concentrated near the  
314 surface of the earth. Furthermore, Wang et al. (2020) mentions that environmental conditions can be  
315 linked to the rate of spread of the SARS-CoV-2 virus and the severity of the disease.

316 Regarding **WED**, regions such as Loreto and Ucayali concentrate more than 40% of their total  
317 population without faeces disposal mechanisms. According to SUNASS (2015), in both regions there  
318 are not WWT with disinfection treatment and in the regions of the Peruvian coast, where there is a  
319 greater number of positive cases for COVID-19, they have a percentage of the population without faeces  
320 treatment of less than 15%, therefore, establishing an inverse or direct relationship between the  
321 percentage of the population that does not have faeces disposal mechanisms and the number of  
322 confirmed cases of COVID-19 would not be completely adequate; however, the absence of faeces  
323 disposal mechanisms could bring public health problems related to contracting COVID-19 because  
324 there are evidences that such virus can be found in the faeces of infected people (W. Ahmed et al., 2020;  
325 Medema et al., 2020; Rosa, Iaconelli, et al., 2020; F. Wu et al., 2020; Wurtzer et al., 2020; Yong Zhang  
326 et al., 2020). Regarding the environmental factor, **SWO**, in general, in all the regions of Peru there is a  
327 trend of final disposal of solid waste in open dumps greater than 45%, only in Callao it is 0% because  
328 it does not have open dumps (MINAM, 2020c). Although a direct relationship was not found between  
329 this factor and regionally confirmed cases of COVID-19, precautions should be taken in the  
330 management of solid waste generated by people infected with COVID-19 because it could be a potential  
331 transmission path (ACR+, 2020; SWANA, 2020). In addition, van Doremalen et al. (2020) mentions  
332 that the residence time in stainless steel, plastic, cardboard and copper wastes could be linked to the  
333 number of positive cases by COVID-19, since their residence time in this type of solid waste can be  
334 several hours, therefore, the measure adopted by the Peruvian government in relation to recycling could  
335 increase the number of cases of COVID-19 infection in people involved in the solid waste management  
336 cycle (Diario Oficial El Peruano, 2020a).

## 337 **4.2 Social factors**

338 The **NHP** factor did not show a uniform association with the number of positive cases for COVID-19.  
339 In Peru, the health emergency due to COVID-19 has put health systems to the test; where the number  
340 of human resources in health is 1.3 per 100000 population (Diario Gestión, 2018), while OPS suggests  
341 that the number of human resources in health should be 2.3 for every 100000 population (OPS, 2015).  
342 On the other hand, WHO (2020b) indicates that when health systems are overwhelmed, morbidity is  
343 exacerbated, disability intensifies, and both mortality due to the outbreak (direct) and mortality due to  
344 previous conditions and treatable with vaccines (avoidable). Finally, the health system of Peru is closed  
345 to the limit despite the multiple efforts made by the government (El Diario, 2020). From the analysis of  
346 the results for **VP**, it was found that in all regions of Peru there is a vulnerable population between 30  
347 and 45% of the total population, Vohora (2017) mentions that vulnerable populations are at higher risk  
348 during an adverse scenario; COVID-19 is not the exception. Lastly, it was found that the regions with  
349 the highest numbers of positive cases for COVID-19 are located in the north of Peru and correspond to  
350 monetary poverty groups 2, 3 and 4. Ahme et al. (2020) mentions that the socioeconomic disadvantages  
351 and inequalities during an epidemic become more evident. Consequently, the economic impact  
352 generated by COVID-19 in Peru has led to higher unemployment rates (M. Vinelli & A. Maurer, 2020).

## 353 **4.3 Analytic hierarchy process**

354 This research combined environmental and social factors analyzed under the Saaty hierarchical analysis  
355 approach, determining that the "high" and "very high" risk levels of the spread of the SARS-CoV-2  
356 virus are found in a greater proportion in the north and central of Peru. In addition to some southern  
357 regions; These results are explained because in these regions there is a considerable level of  
358 vulnerability (evaluated based on social factors) and susceptibility (evaluated based on environmental  
359 factors). Although the model applied may be limited by the relatively small number of variables  
360 analyzed, it is the first research to analyze environmental and social factors (together) in Peru, and it is  
361 shown in a relatively simple way. Also, our results are in accordance with what was found in previous  
362 researches. For example, on May 5, 2020 the CDC - MINSA (2020) published a report indicating that  
363 60% of the regions of Peru should strengthen case care and the control against COVID-19, among these  
364 regions are, Ancash, Callao, Lambayeque, Loreto, Piura, Tumbes, Ucayali, Lima, Ica, La Libertad,

365 Pasco, Arequipa, Junin, Huanuco and Amazonas, while in this research it was found that 68% of the  
366 regions of Peru are at a “high” and “very high” level of risk of spreading the SARS-CoV-2 virus, in  
367 addition to the regions considered by the CDC - MINSA (2020). This research suggests that the San  
368 Martin and Ayacucho regions should be included within the prioritized regions. In the research carried  
369 out by Yaser Burhum (2020), it was shown that as of May 16, 2020, all regions maintained an R index  
370 greater than 1 ( $R > 1$ , virus in spread,  $R < 1$ , virus in disappearance), with which it can be inferred that  
371 the SARS-CoV-2 virus in Peru is still in a propagation stage, this could be related to the fact that the  
372 environmental and social factors analyzed in the present research and others not analyzed would  
373 influence the spread of the SARS virus -CoV-2.

#### 374 **4.4 Limitations**

375 The authors acknowledge that this research has some limitations. The temporality of the data used  
376 ranges between 2015 and 2020; however, it is expected that this variation in temporality has not  
377 significantly affected the results. In Peru, to access to the geo-referenced data of positive cases by  
378 COVID-19 is not available, officially only the accumulated by regions can be obtained, this limits that  
379 the research can be carried out on a much larger scale, perhaps up to a district or focused level. In  
380 addition, the foregoing limited the addition of other variables to the model that could influence the  
381 spread of the SARS-CoV-2 virus, as has been demonstrated in Arias-Reyes et al. (2020).

#### 382 **5. CONCLUSIONS**

383 It is concluded that the trend of environmental factors TCNO<sub>2</sub> and VA-O presented a direct relation  
384 with the number of positive cases by COVID-19 in each region of Peru; however, the analyses of the  
385 other environmental and social factors show a direct relation only with some regions of Peru, so when  
386 performing the AHP the factors have complemented each other. This research is one of the few in which  
387 social and environmental factors are analyzed together, which would be associated with the spread of  
388 SARS-CoV-2 virus through a multiparametric analytical decision-making process. In relation to this,  
389 our results are linked in line with previous studies made in Peru like CDC - MINSA (2020) and Yaser  
390 Burhum (2020). We also concluded that in 68% of the regions of Peru there is a "high" and "very high"  
391 risk of spreading the SARS-CoV-2 virus due to the factors analyzed and that these are in the north of  
392 Peru. Therefore, special care should be taken after social isolation, specifically in regions as Callao,

393 Tumbes, Piura, Loreto and Lambayeque in order to avoid a resurgence and collapse of the health  
394 systems. Based on the results presented in this research, it is considered that the Peruvian government  
395 should promote with greater force the improvement of public policies on air quality management, solid  
396 waste management and sanitation services and urban and rural sewage systems, in order to reduce the  
397 risk of spreading the SARS-CoV-2 virus. Finally, based on the results, we suggest that the methodology  
398 adopted in this research could be replicated at different scales, considering the introduction of more  
399 variables according to the reality of each research area.

#### 400 **ACKNOWLEDGEMENTS**

401 The authors thank Richard Huapaya Pardavé and the research group “Sustainable Development and  
402 Environmental Research” who very cordially reviewed the scientific article. To our universities,  
403 National University of Callao and National University of Engineering.

#### 404 **DECLARATION OF INTEREST**

405 The authors declare that they have no financial interest, known competitor, or personal relationships  
406 that might appear to influence the work reported in this document.

407

408 **REFERENCES**

- 409 ACR+. (2020). *Municipal waste management and COVID-19*. [https://www.acrplus.org/en/municipal-](https://www.acrplus.org/en/municipal-waste-management-covid-19#france)  
410 [waste-management-covid-19#france](https://www.acrplus.org/en/municipal-waste-management-covid-19#france)
- 411 Ahmed, F., Ahmed, eem, Pissarides, C., & Stiglitz, J. (2020). Why inequality could spread COVID-  
412 19. In *The Lancet Public Health* (Vol. 5, p. e240). [https://doi.org/10.1016/S0140-](https://doi.org/10.1016/S0140-6736(20)30673-5)  
413 [6736\(20\)30673-5](https://doi.org/10.1016/S0140-6736(20)30673-5)
- 414 Ahmed, W., Angel, N., Edson, J., Bibby, K., Bivins, A., O'Brien, J. W., Choi, P. M., Kitajima, M.,  
415 Simpson, S. L., Li, J., Tschärke, B., Verhagen, R., Smith, W. J. M., Zaugg, J., Dierens, L.,  
416 Hugenholtz, P., Thomas, K. V., & Mueller, J. F. (2020). First confirmed detection of SARS-  
417 CoV-2 in untreated wastewater in Australia: A proof of concept for the wastewater surveillance  
418 of COVID-19 in the community. *Science of The Total Environment*, 728, 138764.  
419 <https://doi.org/10.1016/j.scitotenv.2020.138764>
- 420 Arias-Reyes, C., Zubieta-DeUrioste, N., Poma-Machicao, L., Aliaga-Raduan, F., Carvajal-Rodriguez,  
421 F., Dutschmann, M., Schneider-Gasser, E. M., Zubieta-Calleja, G., & Soliz, J. (2020). Does the  
422 pathogenesis of SARS-CoV-2 virus decrease at high-altitude? *Respiratory Physiology and*  
423 *Neurobiology*, 277(April), 103443. <https://doi.org/10.1016/j.resp.2020.103443>
- 424 Banco Mundial. (2015, May 13). *América Latina: la región con más agua, la más castigada por la*  
425 *sed*. [https://www.bancomundial.org/es/news/feature/2015/05/13/america-latina-la-region-con-](https://www.bancomundial.org/es/news/feature/2015/05/13/america-latina-la-region-con-mas-agua-la-mas-castigada-por-la-sed)  
426 [mas-agua-la-mas-castigada-por-la-sed](https://www.bancomundial.org/es/news/feature/2015/05/13/america-latina-la-region-con-mas-agua-la-mas-castigada-por-la-sed)
- 427 CDC - MINSA. (2020). *Análisis Epidemiológico de la Situación Actual de COVID-19 en el Perú,*  
428 *basado en la información de la Vigilancia Epidemiológica y la Investigación de Campo.*  
429 <https://www.dge.gob.pe/portal/docs/tools/coronavirus/analisiscoronavirus080520.pdf>
- 430 CENEPRED. (2015). *Manual para la evaluación de riesgos originados por fenómenos naturales-02*  
431 *Versión* (1st ed.).



- 432 Chakraborty, I., & Maity, P. (2020). COVID-19 outbreak: Migration, effects on society, global  
433 environment and prevention. *Science of the Total Environment*, 728, 138882.  
434 <https://doi.org/10.1016/j.scitotenv.2020.138882>
- 435 Chen, K., Wang, M., Huang, C., Kinney, P. L., & Anastas, P. T. (2020). Air Pollution Reduction and  
436 Mortality Benefit during the COVID-19 Outbreak in China. *MedRxiv*, 203, 2–5.  
437 <https://www.medrxiv.org/content/10.1101/2020.03.23.20039842v1>
- 438 Conticini, E., Frediani, B., & Caro, D. (2020). Can atmospheric pollution be considered a co-factor in  
439 extremely high level of SARS-CoV-2 lethality in Northern Italy ? \*. *Environmental Pollution*,  
440 xxx, 114465. <https://doi.org/10.1016/j.envpol.2020.114465>
- 441 Diario Gestión. (2018). *Perú tiene 12.8 médicos por cada 10,000 habitantes, muy abajo de países*  
442 *OCDE*. [https://gestion.pe/peru/peru-12-8-medicos-10-000-habitantes-abajo-paises-ocde-236346-](https://gestion.pe/peru/peru-12-8-medicos-10-000-habitantes-abajo-paises-ocde-236346-noticia/)  
443 [noticia/](https://gestion.pe/peru/peru-12-8-medicos-10-000-habitantes-abajo-paises-ocde-236346-noticia/)
- 444 Diario Oficial El Peruano. (2020a). *Decreto Supremo que aprueba la reanudación de actividades*  
445 *económicas en forma gradual y progresiva dentro del marco de la declaratoria de Emergencia*  
446 *Sanitaria Nacional por las graves circunstancias que afectan la vida de la Nación a*  
447 *consecuencia del COVID*. [https://busquedas.elperuano.pe/normaslegales/decreto-supremo-que-](https://busquedas.elperuano.pe/normaslegales/decreto-supremo-que-aprueba-la-reanudacion-de-actividades-ec-decreto-supremo-n-080-2020-pcm-1865987-1/)  
448 [aprueba-la-reanudacion-de-actividades-ec-decreto-supremo-n-080-2020-pcm-1865987-1/](https://busquedas.elperuano.pe/normaslegales/decreto-supremo-que-aprueba-la-reanudacion-de-actividades-ec-decreto-supremo-n-080-2020-pcm-1865987-1/)
- 449 Diario Oficial El Peruano. (2020b). *Decreto Supremo que declara Estado de Emergencia Nacional*  
450 *por las graves circunstancias que afectan la vida de la Nación a consecuencia del brote del*  
451 *COVID-19*. [https://busquedas.elperuano.pe/normaslegales/decreto-supremo-que-declara-estado-](https://busquedas.elperuano.pe/normaslegales/decreto-supremo-que-declara-estado-de-emergencia-nacional-po-decreto-supremo-n-044-2020-pcm-1864948-2/)  
452 [de-emergencia-nacional-po-decreto-supremo-n-044-2020-pcm-1864948-2/](https://busquedas.elperuano.pe/normaslegales/decreto-supremo-que-declara-estado-de-emergencia-nacional-po-decreto-supremo-n-044-2020-pcm-1864948-2/)
- 453 El Diario. (2020). *Perú cerca del colapso tras seis semanas intentando contener al coronavirus*.  
454 [https://www.eldiario.es/sociedad/Peru-colapso-intentando-contener-](https://www.eldiario.es/sociedad/Peru-colapso-intentando-contener-coronavirus_0_1020149086.html)  
455 [coronavirus\\_0\\_1020149086.html](https://www.eldiario.es/sociedad/Peru-colapso-intentando-contener-coronavirus_0_1020149086.html)

- 456 ESA. (2020). *European space agency*. <https://www.esa.int/>
- 457 Eskes, H., Van Geffen, J., Boersma, F., Eichmann, K.-U., Apituley, A., Pedergrana, M., Sneep, M.,  
458 Veefkind, J. P., & Loyola, D. (2019). *Sentinel-5 precursor/TROPOMI Level 2 Product User*  
459 *Manual Nitrogen dioxide*.
- 460 Euronews. (2020). *Europe breathes fresher air under lockdown as coronavirus measures ease*  
461 *pollution*. [https://www.euronews.com/2020/03/30/europe-breathes-fresher-air-under-lockdown-](https://www.euronews.com/2020/03/30/europe-breathes-fresher-air-under-lockdown-as-coronavirus-measures-ease-pollution)  
462 [as-coronavirus-measures-ease-pollution](https://www.euronews.com/2020/03/30/europe-breathes-fresher-air-under-lockdown-as-coronavirus-measures-ease-pollution)
- 463 Guan, W. J., Ni, Z. Y., Hu, Y., Liang, W. H., Ou, C. Q., He, J. X., Liu, L., Shan, H., Lei, C. L., Hui,  
464 D. S. C., Du, B., Li, L. J., Zeng, G., Yuen, K. Y., Chen, R. C., Tang, C. L., Wang, T., Chen, P.  
465 Y., Xiang, J., ... Zhong, N. S. (2020). Clinical Characteristics of Coronavirus Disease 2019 in  
466 China. *The New England Journal of Medicine*, 1–13. <https://doi.org/10.1056/NEJMoa2002032>
- 467 Hellewell, J., Abbott, S., Gimma, A., Bosse, N. I., Jarvis, C. I., Russell, T. W., Munday, J. D.,  
468 Kucharski, A. J., Edmunds, W. J., Sun, F., Flasche, S., Quilty, B. J., Davies, N., Liu, Y.,  
469 Clifford, S., Klepac, P., Jit, M., Diamond, C., Gibbs, H., ... Eggo, R. M. (2020). Feasibility of  
470 controlling COVID-19 outbreaks by isolation of cases and contacts. *The Lancet Global Health*,  
471 8(4), e488–e496. [https://doi.org/10.1016/S2214-109X\(20\)30074-7](https://doi.org/10.1016/S2214-109X(20)30074-7)
- 472 INEI. (2016). *Perú: Formas de acceso al agua y saneamiento básico*.  
473 [https://www.inei.gob.pe/media/MenuRecursivo/boletines/boletin\\_agua\\_y\\_saneamiento.pdf](https://www.inei.gob.pe/media/MenuRecursivo/boletines/boletin_agua_y_saneamiento.pdf)
- 474 INEI. (2017). *Capítulo 1 del Perfil Sociodemográfico del Perú: Anexo Estadístico*.  
475 [https://www.inei.gob.pe/media/MenuRecursivo/publicaciones\\_digitaless/Est/Lib1136/index.htm](https://www.inei.gob.pe/media/MenuRecursivo/publicaciones_digitaless/Est/Lib1136/index.htm)
- 476 INEI. (2018a). *Establecimientos del Sector Salud*. [http://m.inei.gob.pe/estadisticas/indice-](http://m.inei.gob.pe/estadisticas/indice-tematico/health-sector-establishments/)  
477 [tematico/health-sector-establishments/](http://m.inei.gob.pe/estadisticas/indice-tematico/health-sector-establishments/)
- 478 INEI. (2018b). *Un análisis de la eficiencia de la gestión municipal de residuos sólidos en el Perú y*  
479 *sus determinantes*. <https://www.inei.gob.pe/media/MenuRecursivo/investigaciones/residuos->

- 480           solidos.pdf
- 481   INEI. (2019). *Evolución de la Pobreza Monetaria 2017 - 2018*.
- 482           [https://www.inei.gob.pe/media/MenuRecursivo/publicaciones\\_digitales/Est/Lib1646/libro.pdf](https://www.inei.gob.pe/media/MenuRecursivo/publicaciones_digitales/Est/Lib1646/libro.pdf)
- 483   ISWA. (2020). *Waste management during the COVID-19 pandemic*.
- 484           <https://www.iswa.org/iswa/covid-19/#c7979>
- 485   Labib, A. (2014). Introduction to the Analytic Hierarchy Process. In *Learning from Failures* (pp. 33–
- 486           44). Elsevier. <https://doi.org/10.1016/b978-0-12-416727-8.00003-5>
- 487   Lin, K., Chen, H., Xu, C. Y., Yan, P., Lan, T., Liu, Z., & Dong, C. (2020). Assessment of flash flood
- 488           risk based on improved analytic hierarchy process method and integrated maximum likelihood
- 489           clustering algorithm. *Journal of Hydrology*, 584, 124696.
- 490           <https://doi.org/10.1016/j.jhydrol.2020.124696>
- 491   Lou, J., Tian, S. J., Niu, S. M., Kang, X. Q., Lian, H. X., Zhang, L. X., & Zhang, J. J. (2020).
- 492           Coronavirus disease 2019: A bibliometric analysis and review. *European Review for Medical*
- 493           *and Pharmacological Sciences*, 24(6), 3411–3421.
- 494           [https://doi.org/10.26355/eurrev\\_202003\\_20712](https://doi.org/10.26355/eurrev_202003_20712)
- 495   M. Vinelli, & A. Maurer. (2020, April 24). *Impacto del COVID-19 en el empleo en el Perú*. Conexión
- 496           ESAN. [https://www.esan.edu.pe/conexion/actualidad/2020/04/24/impacto-del-covid-19-en-el-](https://www.esan.edu.pe/conexion/actualidad/2020/04/24/impacto-del-covid-19-en-el-empleo-en-el-peru/)
- 497           [empleo-en-el-peru/](https://www.esan.edu.pe/conexion/actualidad/2020/04/24/impacto-del-covid-19-en-el-empleo-en-el-peru/)
- 498   Madurai Elavarasan, R., & Pugazhendhi, R. (2020). Restructured society and environment: A review
- 499           on potential technological strategies to control the COVID-19 pandemic. *Science of The Total*
- 500           *Environment*, xxx, 138858. <https://doi.org/https://doi.org/10.1016/j.scitotenv.2020.138858>
- 501   Medema, G., Heijnen, L., Elsinga, G., Italiaander, R., & Brouwer, A. (2020). Presence of SARS-
- 502           Coronavirus-2 in sewage. *MedRxiv*, 2020.03.29.20045880.
- 503           <https://doi.org/10.1101/2020.03.29.20045880>

- 504 Méndez-Martínez, S., García-Carrasco, M., Jiménez-Herrera, E. A., Mendoza-Pinto, C., Etchegaray-  
505 Morales, I., Barahona-Rubio, P. W., Gálvez-Romero, J. L., Munguía-Realpozo, P., Muñoz-  
506 Guarneros, C. O., Cedillo-Ramírez, M. L., Silva-Gómez, S. E., Linares-Fleites, G., & Rojas-  
507 Vallaraga, A. (2018). Factors of the epidemiological triad that influence the persistence of  
508 human papilloma virus infection in women with systemic lupus erythematosus. In *Lupus* (Vol.  
509 27, Issue 9). <https://doi.org/10.1177/0961203318773176>
- 510 MINAM. (2020a). *Calidad de aire en Lima durante cuarentena alcanzó niveles que recomienda*  
511 *Organización Mundial de Salud*. [https://www.gob.pe/institucion/minam/noticias/110755-](https://www.gob.pe/institucion/minam/noticias/110755-calidad-de-aire-en-lima-durante-cuarentena-alcanzo-niveles-que-recomienda-organizacion-mundial-de-salud)  
512 [calidad-de-aire-en-lima-durante-cuarentena-alcanzo-niveles-que-recomienda-organizacion-](https://www.gob.pe/institucion/minam/noticias/110755-calidad-de-aire-en-lima-durante-cuarentena-alcanzo-niveles-que-recomienda-organizacion-mundial-de-salud)  
513 [mundial-de-salud](https://www.gob.pe/institucion/minam/noticias/110755-calidad-de-aire-en-lima-durante-cuarentena-alcanzo-niveles-que-recomienda-organizacion-mundial-de-salud)
- 514 MINAM. (2020b). *Gobierno reactivará el reciclaje de manera gradual y controlada*.  
515 [https://www.gob.pe/institucion/minam/noticias/143662-gobierno-reactivara-el-reciclaje-de-](https://www.gob.pe/institucion/minam/noticias/143662-gobierno-reactivara-el-reciclaje-de-manera-gradual-y-controlada?fbclid=IwAR2yLI3yFDu8jQiABhsBolwhy-kPjQ0iFg-GbwpUexBgGIDodvkQn3gw4S8)  
516 [manera-gradual-y-controlada?fbclid=IwAR2yLI3yFDu8jQiABhsBolwhy-kPjQ0iFg-](https://www.gob.pe/institucion/minam/noticias/143662-gobierno-reactivara-el-reciclaje-de-manera-gradual-y-controlada?fbclid=IwAR2yLI3yFDu8jQiABhsBolwhy-kPjQ0iFg-GbwpUexBgGIDodvkQn3gw4S8)  
517 [GbwpUexBgGIDodvkQn3gw4S8](https://www.gob.pe/institucion/minam/noticias/143662-gobierno-reactivara-el-reciclaje-de-manera-gradual-y-controlada?fbclid=IwAR2yLI3yFDu8jQiABhsBolwhy-kPjQ0iFg-GbwpUexBgGIDodvkQn3gw4S8)
- 518 MINAM. (2020c). *Infraestructuras de disposición final de residuos sólidos - Listado de rellenos*  
519 *sanitarios en el Perú*. [https://www.gob.pe/institucion/minam/informes-publicaciones/279709-](https://www.gob.pe/institucion/minam/informes-publicaciones/279709-listado-de-rellenos-sanitarios)  
520 [listado-de-rellenos-sanitarios](https://www.gob.pe/institucion/minam/informes-publicaciones/279709-listado-de-rellenos-sanitarios)
- 521 MINSA. (2020). *Sala Situacional COVID-19 Perú*. [https://covid19.minsa.gob.pe/sala\\_situacional.asp](https://covid19.minsa.gob.pe/sala_situacional.asp)
- 522 NOAA. (2020). *Physical Sciences Laboratory*. <https://www.noaa.gov/>
- 523 Núñez-Delgado, A. (2020). What do we know about the SARS-CoV-2 coronavirus in the  
524 environment? *Science of The Total Environment*, 727, 138647.  
525 <https://doi.org/10.1016/j.scitotenv.2020.138647>
- 526 Nzediegwu, C., & Chang, S. X. (2020). Developing Countries For Submission to : Resources  
527 Conservation & Recycling Type of Paper : Perspective. *Resources, Conservation & Recycling*,

- 528 104947. <https://doi.org/10.1016/j.resconrec.2020.104947>
- 529 OEFA. (2018). *Áreas degradadas por residuos sólidos municipales*.  
530 <https://sinia.minam.gob.pe/indicador/1627>
- 531 Ogen, Y. (2020). Assessing nitrogen dioxide (NO<sub>2</sub>) levels as a contributing factor to coronavirus  
532 (COVID-19) fatality. *Science of the Total Environment*, 726, 138605.  
533 <https://doi.org/10.1016/j.scitotenv.2020.138605>
- 534 Omrani, H., Omrani, B., Parmentier, B., & Helbich, M. (2020). Spatio-temporal data on the air  
535 pollutant nitrogen dioxide derived from Sentinel satellite for France. *Data in Brief*, 28, 105089.  
536 <https://doi.org/10.1016/j.dib.2019.105089>
- 537 OPS. (2015). *La OPS/OMS destaca la necesidad de formar más personal de enfermería en América*  
538 *Latina y el Caribe*.  
539 [https://www.paho.org/hq/index.php?option=com\\_content&view=article&id=10947:2015-](https://www.paho.org/hq/index.php?option=com_content&view=article&id=10947:2015-)  
540 [pahowho-highlights-need-train-more-nursing-personnel&Itemid=1926&lang=es](https://www.paho.org/hq/index.php?option=com_content&view=article&id=10947:2015-pahowho-highlights-need-train-more-nursing-personnel&Itemid=1926&lang=es)
- 541 Pourghasemi, H. R., Pradhan, B., & Gokceoglu, C. (2012). Application of fuzzy logic and analytical  
542 hierarchy process (AHP) to landslide susceptibility mapping at Haraz watershed, Iran. *Natural*  
543 *Hazards*, 63(2), 965–996. <https://doi.org/10.1007/s11069-012-0217-2>
- 544 Putrenko, V. V., & Pashynska, N. M. (2017). The use of remote sensing data for modeling air quality  
545 in the cities. *ISPRS Annals of the Photogrammetry, Remote Sensing and Spatial Information*  
546 *Sciences*, 4(5W1), 57–62. <https://doi.org/10.5194/isprs-annals-IV-5-W1-57-2017>
- 547 Räisänen, J. (1995). Factors Affecting Synoptic-Scale Vertical Motions: A Statistical Study Using a  
548 Generalized Omega Equation. In *Monthly Weather Review* (Vol. 123, Issue 8, pp. 2447–2460).  
549 [https://doi.org/10.1175/1520-0493\(1995\)123<2447:fassvm>2.0.co;2](https://doi.org/10.1175/1520-0493(1995)123<2447:fassvm>2.0.co;2)
- 550 Rajkumar, R. P. (2020). COVID-19 and mental health: A review of the existing literature. *Asian*  
551 *Journal of Psychiatry*, 52(March), 102066. <https://doi.org/10.1016/j.ajp.2020.102066>

- 552 Ren, H., Zhao, L., Zhang, A., Song, L., Liao, Y., Lu, W., & Cui, C. (2020). Early forecasting of the  
553 potential risk zones of COVID-19 in China's megacities. *Science of the Total Environment*, 729,  
554 138995. <https://doi.org/10.1016/j.scitotenv.2020.138995>
- 555 Requia, W. J., Kondo, E. K., Adams, M. D., Gold, D. R., & Struchiner, C. J. (2020). Risk of the  
556 Brazilian health care system over 5572 municipalities to exceed health care capacity due to the  
557 2019 novel coronavirus (COVID-19). *Science of The Total Environment*, 730, 139144.  
558 <https://doi.org/10.1016/j.scitotenv.2020.139144>
- 559 Roosa, K., Lee, Y., Luo, R., Kirpich, A., Rothenberg, R., Hyman, J. M., Yan, P., & Chowell, G.  
560 (2020). Real-time forecasts of the COVID-19 epidemic in China from February 5th to February  
561 24th, 2020. *Infectious Disease Modelling*, 5, 256–263. <https://doi.org/10.1016/j.idm.2020.02.002>
- 562 Rosa, G. La, Bonadonna, L., Lucentini, L., Kenmoe, S., & Suffredini, E. (2020). Coronavirus in water  
563 environments: Occurrence, persistence and concentration methods - A scoping review. *Water*  
564 *Research*, 179, 115899. <https://doi.org/10.1016/j.watres.2020.115899>
- 565 Rosa, G. La, Iaconelli, M., Mancini, P., Ferraro, G. B., Veneri, C., Bonadonna, L., & Lucentini, L.  
566 (2020). First detection of sars-cov-2 in untreated wastewaters in Italy. *MedRxiv*,  
567 2020.04.25.20079830. <https://doi.org/10.1101/2020.04.25.20079830>
- 568 RPP Noticias. (2019). *La vida dura de los que trabajan entre la basura en el botadero de Trujillo*.  
569 [https://rpp.pe/peru/la-libertad/la-vida-dura-de-los-que-trabajan-entre-la-basura-en-el-botadero-](https://rpp.pe/peru/la-libertad/la-vida-dura-de-los-que-trabajan-entre-la-basura-en-el-botadero-de-trujillo-galeria-noticia-1193572)  
570 [de-trujillo-galeria-noticia-1193572](https://rpp.pe/peru/la-libertad/la-vida-dura-de-los-que-trabajan-entre-la-basura-en-el-botadero-de-trujillo-galeria-noticia-1193572)
- 571 Saaty, T. L. (1980). *The analytic hierarchy process : planning, priority setting, resource allocation*.  
572 McGraw-Hill International.
- 573 Saaty, T. L. (1986). Axiomatic Foundation of the Analytic Hierarchy Process. *Management Science*,  
574 32(7), 841–855. <https://doi.org/10.1287/mnsc.32.7.841>
- 575 Saaty, T. L. (1990). How to make a decision: The analytic hierarchy process. *European Journal of*

- 576 *Operational Research*, 48(1), 9–26. [https://doi.org/10.1016/0377-2217\(90\)90057-I](https://doi.org/10.1016/0377-2217(90)90057-I)
- 577 Sun, K., Chen, J., & Viboud, C. (2020). Early epidemiological analysis of the 2019-nCoV outbreak  
578 based on a crowdsourced data. In *medRxiv* (p. 2020.01.31.20019935). Cold Spring Harbor  
579 Laboratory Press. <https://doi.org/10.1101/2020.01.31.20019935>
- 580 Sun, X., Wang, T., Cai, D., Hu, Z., Chen, J., Liao, H., Zhi, L., Wei, H., Zhang, Z., Qiu, Y., Wang, J.,  
581 & Wang, A. (2020). Cytokine storm intervention in the early stages of COVID-19 pneumonia.  
582 *Cytokine & Growth Factor Reviews*. <https://doi.org/10.1016/j.cytogfr.2020.04.002>
- 583 SUNASS. (2015, September). *Diagnóstico de las plantas de tratamiento de aguas residuales en el*  
584 *ámbito de operación de las entidades prestadoras de servicios de saneamiento*.  
585 <https://www.sunass.gob.pe/doc/Publicaciones/ptar.pdf>
- 586 SWANA. (2020). *Guidance on Coronavirus Basic COVID-19 Information*.  
587 [https://swana.org/initiatives/guidance-on-coronavirus-\(covid-19\)](https://swana.org/initiatives/guidance-on-coronavirus-(covid-19))
- 588 van Doremalen, N., Bushmaker, T., Morris, D. H., Holbrook, M. G., Gamble, A., Williamson, B. N.,  
589 Tamin, A., Harcourt, J. L., Thornburg, N. J., Gerber, S. I., Lloyd-Smith, J. O., de Wit, E., &  
590 Munster, V. J. (2020). Aerosol and Surface Stability of SARS-CoV-2 as Compared with SARS-  
591 CoV-1. *The New England Journal of Medicine*, 382(16), 1564–1567.  
592 <https://doi.org/10.1056/NEJMc2004973>
- 593 Vassou, V., Labib, A., & Roberts, M. (2006). A decision model for junction improvement schemes.  
594 *Proceedings of the Institution of Civil Engineers: Transport*, 159(3), 127–134.  
595 <https://doi.org/10.1680/tran.2006.159.3.127>
- 596 Vohora, D. (2017). Ethical Considerations in Clinical Research. In *Pharmaceutical Medicine and*  
597 *Translational Clinical Research* (pp. 265–283). Elsevier Inc. [https://doi.org/10.1016/B978-0-12-](https://doi.org/10.1016/B978-0-12-802103-3.00015-8)  
598 [802103-3.00015-8](https://doi.org/10.1016/B978-0-12-802103-3.00015-8)
- 599 Wang, J., Tang, K., Feng, K., & Lv, W. (2020). High Temperature and High Humidity Reduce the



- 600 Transmission of COVID-19. In *SSRN Electronic Journal*. Elsevier BV.  
601 <https://doi.org/10.2139/ssrn.3551767>
- 602 WHO. (2020a). *Declaration of Public Health Emergency of International Concern*.  
603 <https://www.who.int/emergencies/diseases/novel-coronavirus-2019/events-as-they-happen>
- 604 WHO. (2020b). *Strengthening the Health Systems Response to COVID-19 - Technical Guidance #1*  
605 (Issue April). [http://www.euro.who.int/\\_\\_data/assets/pdf\\_file/0007/436354/strengthening-health-](http://www.euro.who.int/__data/assets/pdf_file/0007/436354/strengthening-health-systems-response-COVID-19-technical-guidance-1.pdf)  
606 [systems-response-COVID-19-technical-guidance-1.pdf](http://www.euro.who.int/__data/assets/pdf_file/0007/436354/strengthening-health-systems-response-COVID-19-technical-guidance-1.pdf)
- 607 Wilder-Smith, A., & Freedman, D. O. (2020). Isolation, quarantine, social distancing and community  
608 containment: Pivotal role for old-style public health measures in the novel coronavirus (2019-  
609 nCoV) outbreak. *Journal of Travel Medicine*, 27(2), 1–4. <https://doi.org/10.1093/jtm/taaa020>
- 610 Wu, F., Xiao, A., Zhang, J., Gu, X., Lee, W. L., Kauffman, K., Hanage, W., Matus, M., Ghaeli, N.,  
611 Endo, N., Duvallet, C., Moniz, K., Erickson, T., Chai, P., Thompson, J., & Alm, E. (2020).  
612 SARS-CoV-2 titers in wastewater are higher than expected from clinically confirmed cases.  
613 *MedRxiv*, 2020.04.05.20051540. <https://doi.org/10.1101/2020.04.05.20051540>
- 614 Wu, X., Nethery, R. C., Sabath, B. M., Braun, D., & Dominici, F. (2020). Exposure to air pollution  
615 and COVID-19 mortality in the United States. In *medRxiv* (p. 2020.04.05.20054502). Cold  
616 Spring Harbor Laboratory Press. <https://doi.org/10.1101/2020.04.05.20054502>
- 617 Wu, Z., & McGoogan, J. M. (2020). Characteristics of and Important Lessons from the Coronavirus  
618 Disease 2019 (COVID-19) Outbreak in China: Summary of a Report of 72314 Cases from the  
619 Chinese Center for Disease Control and Prevention. In *JAMA - Journal of the American Medical*  
620 *Association* (Vol. 323, Issue 13, pp. 1239–1242). American Medical Association.  
621 <https://doi.org/10.1001/jama.2020.2648>
- 622 Wurtzer, S., Marechal, V., Mouchel, J.-M., & Moulin, L. (2020). Time course quantitative detection  
623 of SARS-CoV-2 in Parisian wastewaters correlates with COVID-19 confirmed cases. *MedRxiv*,



- 624 2020.04.12.20062679. <https://doi.org/10.1101/2020.04.12.20062679>
- 625 Yaser Burhum, E. R. (2020). *El Martillazo y el Huayno*. [https://medium.com/@rburhum/el-](https://medium.com/@rburhum/el-martillazo-y-el-huayno-278716f49938)
- 626 [martillazo-y-el-huayno-278716f49938](https://medium.com/@rburhum/el-martillazo-y-el-huayno-278716f49938)
- 627 Zambrano-monserrate, M. A., Alejandra, M., & Sanchez-alcalde, L. (2020). Indirect effects of
- 628 COVID-19 on the environment. *Science of the Total Environment*, 728, 138813.
- 629 <https://doi.org/10.1016/j.scitotenv.2020.138813>
- 630 Zambrano-Monserrate, M. A., Alejandra Ruano, M., & Sanchez-Alcalde, L. (2020). Indirect effects of
- 631 COVID-19 on the environment. *Science of the Total Environment*, 728, 138813.
- 632 <https://doi.org/10.1016/j.scitotenv.2020.138813>
- 633 Zhang, Yin, Wang, R., Huang, P., Wang, X., & Wang, S. (2020). Risk evaluation of large-scale
- 634 seawater desalination projects based on an integrated fuzzy comprehensive evaluation and
- 635 analytic hierarchy process method. *Desalination*, 478, 114286.
- 636 <https://doi.org/10.1016/j.desal.2019.114286>
- 637 Zhang, Yong, Chen, C., Zhu, S., Shu, C., Wang, D., Song, J., Song, Y., Zhen, W., Feng, Z., Wu, G.,
- 638 Xu, J., Xu, W., Zhang, Y., Chen, C., Zhu, S., Shu, C., Wang, D., Song, J., Song, Y., ... Xu, W.
- 639 (2020). Isolation of 2019-nCoV from a Stool Specimen of a Laboratory-Confirmed Case of the
- 640 Coronavirus Disease 2019 (COVID-19). *China CDC Weekly*, 2(8), 123–124.
- 641 <https://doi.org/10.46234/CCDCW2020.033>
- 642 Zhou, S., & Yang, P. (2020). Risk management in distributed wind energy implementing Analytic
- 643 Hierarchy Process. *Renewable Energy*, 150, 616–623.
- 644 <https://doi.org/10.1016/j.renene.2019.12.125>
- 645 Zhu, Y., Xie, J., Huang, F., & Cao, L. (2020). Association between short-term exposure to air
- 646 pollution and COVID-19 infection: Evidence from China. *Science of The Total Environment*,
- 647 727, 138704. <https://doi.org/10.1016/j.scitotenv.2020.138704>

648 Ziegler-Rodriguez, K., Margallo, M., Aldaco, R., Vázquez-Rowe, I., & Kahhat, R. (2019).  
649 Transitioning from open dumpsters to landfilling in Peru: Environmental benefits and challenges  
650 from a life-cycle perspective. *Journal of Cleaner Production*, 229, 989–1003.  
651 <https://doi.org/10.1016/j.jclepro.2019.05.015>

652

653

654

655

656

657

658

659

660

661

662

663

664

665

666

667

668

**Table 1.** Scale of preference between two parameters in AHP Saaty (1980)

Preference factor	Degree of preference	Explanation
1	Equally	Two factors contribute equally to the objective
3	Moderately	Experience and judgment slightly to moderately favor one factor over another
5	Strongly	Experience and judgment strongly or essentially favor one factor over another.
7	Very strongly	A factor is strongly favored over another and its dominance is showed in practice.
9	Extremely	The evidence of favoring one factor over another is of the highest degree possible of an affirmation
2,4,6,8	Intermediate	Used to represent compromises between the preferences in weights 1, 3, 5, 7, and 9.
Reciprocals	Opposites	Used for inverse comparison.

669

670

671

**Table 2.** Environmental and social factors

Category	Factor	Variable name	Unit	Source
Environmental	Tropospheric NO <sub>2</sub> column	TCNO <sub>2</sub>	mol/m <sup>2</sup>	(ESA, 2020)
Environmental	Vertical airflow	VA-O	Pa/s	(NOAA, 2020)
Environmental	Percentage of solid waste disposed in open dumps	SWO	Percentage of solid waste disposed in open dumps /region	(INEI, 2018b)
Environmental	Percentage of population without faeces treatment	WED	Percentage of population without faeces treatment/region	(INEI, 2016)
Social	Monetary poverty levels	MP	Monetary poverty levels/region	(INEI, 2019)
Social	Percentage of the number of hospitals per population	NHP	Percentage of the number of hospitals per population*100000/population of region	(INEI, 2018a)
Social	Vulnerable population	VP	Vulnerable population/region	(INEI, 2017)
Social	Number of positive cases to the COVID - 19*	-	Number of positive cases to the COVID - 19/region	(MINSa, 2020)

672 \* Data taken as of April 28, 2020.

673

674 **Table 3.** Pair-wise comparison matrix, factor weights and consistency ratio of the influence of factors on  
675 susceptibility to the SAR-CoV-2 virus.

<i>Influencing factors</i>	<i>Pair-wise comparison matrix</i>				<i>Weight</i>
	<i>TCNO<sub>2</sub></i>	<i>VA-O</i>	<i>WED</i>	<i>SWO</i>	
TCNO <sub>2</sub>	1.00	1.00	5.00	8.00	0.435
VA-O		1.00	5.00	6.00	0.407
WED			1.00	3.00	0.106
SWO				1.00	0.052

*Consistency ratio (<0.08) = 0.032*

676 (TCNO<sub>2</sub>: Tropospheric NO<sub>2</sub> column, VA-O: Vertical Airflow – Omega, WED: Percentage of population  
677 without faeces treatment, SWO: Percentage of solid waste disposed in open dumps)

678

679

680

681

682

683

684

685

686 **Table 4.** Pair-wise comparison matrix, factor weights and consistency ratio of the vulnerability to the SAR-  
 687 CoV-2 virus.

<i>Influencing factors</i>	<i>Pair-wise comparison matrix</i>			<i>Weighth</i>
	<i>NHP</i>	<i>VP</i>	<i>MP</i>	
NHP	1.00	2.00	4.00	0.557
VP		1.00	3.00	0.320
MP			1.00	0.123

*Consistency ratio (<math><0.04> = 0.017</math>*

688 (NHP: Percentage of the number of hospitals per population, MP: Monetary Poverty, VP: Vulnerable  
 689 population)

690

691

692

693

694

695

696

697

698

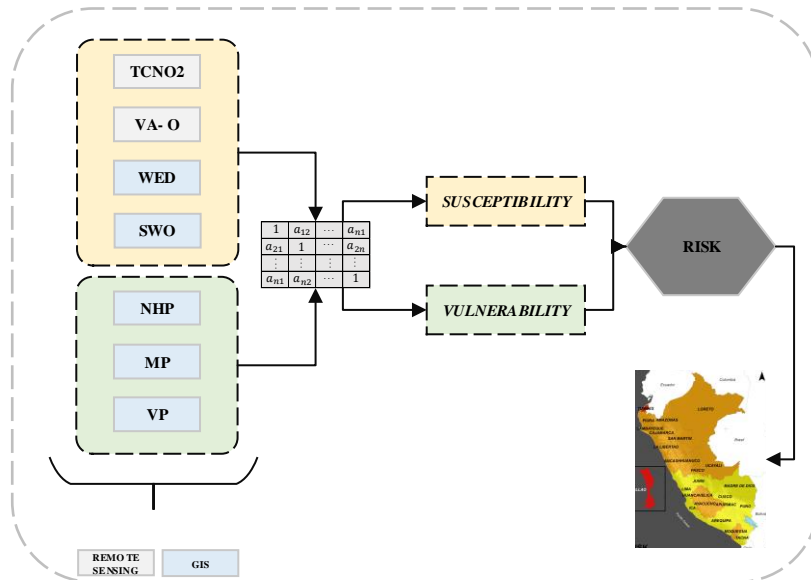
699

700

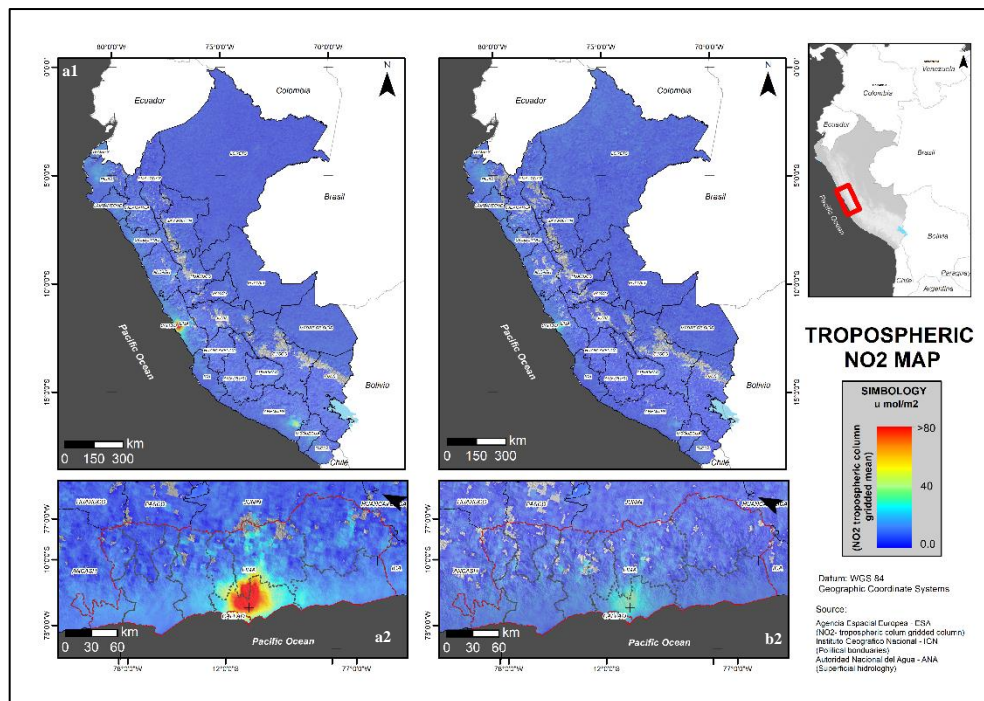
701

702

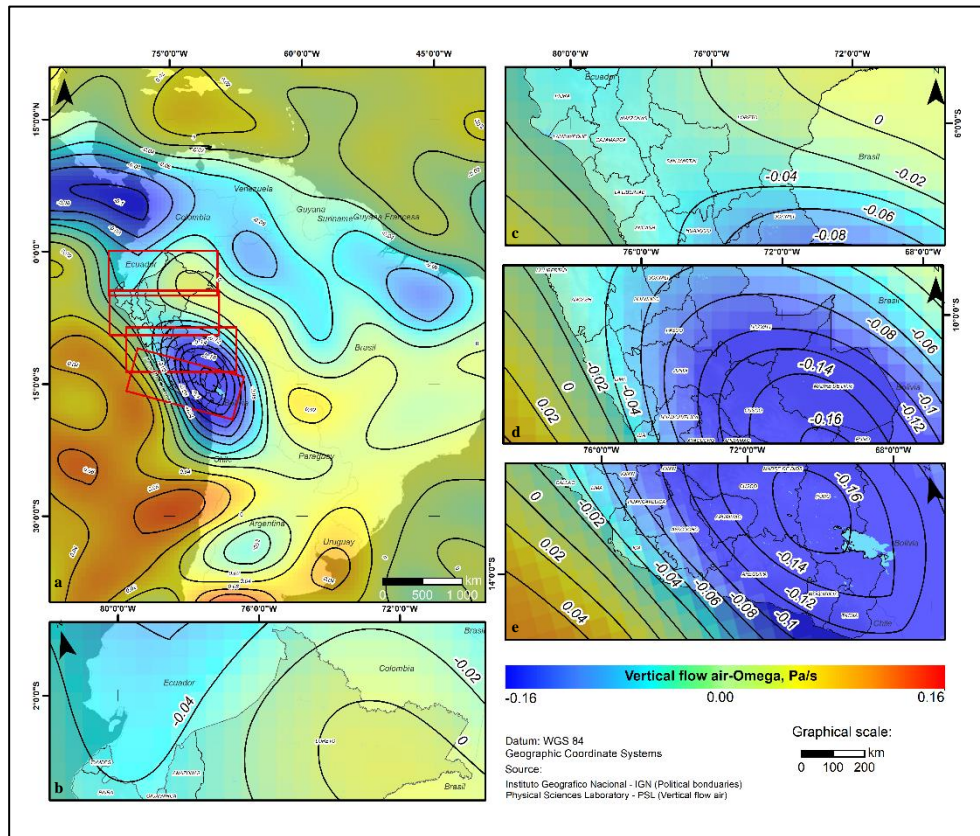
703



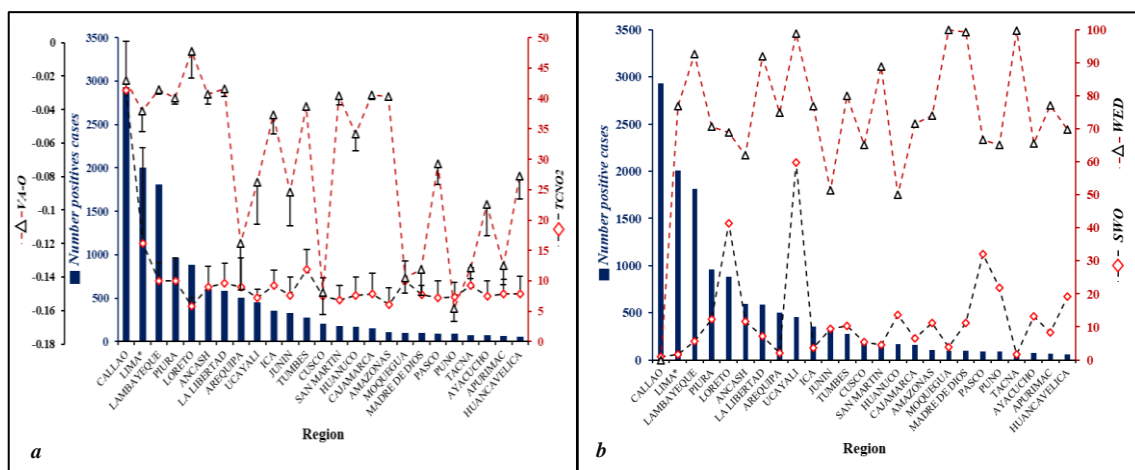
**Fig. 1.** Environmental and social factors used in AHP to determine the risk of spreading SARS-CoV-2 in the regions of Peru. (TCNO<sub>2</sub>: Tropospheric NO<sub>2</sub> column, VA-O: Vertical Airflow – Omega, WED: Percentage of population without faeces treatment, SWO: Percentage of solid waste disposed in open dumps, NHP: Percentage of the number of hospitals per population, MP: Monetary Poverty, VP: Vulnerable population)



**Fig. 2.** Changes in tropospheric NO<sub>2</sub> concentration in the regions of Peru. The NO<sub>2</sub> concentrations before the quarantine period (January 1 to March 14, 2020) are shown in 'a1' and 'a2' for Peru and the Lima region respectively, and the NO<sub>2</sub> concentrations after the quarantine period (March 16 to April 20, 2020) are shown in 'b1' and 'b2' for Peru and Lima, respectively.

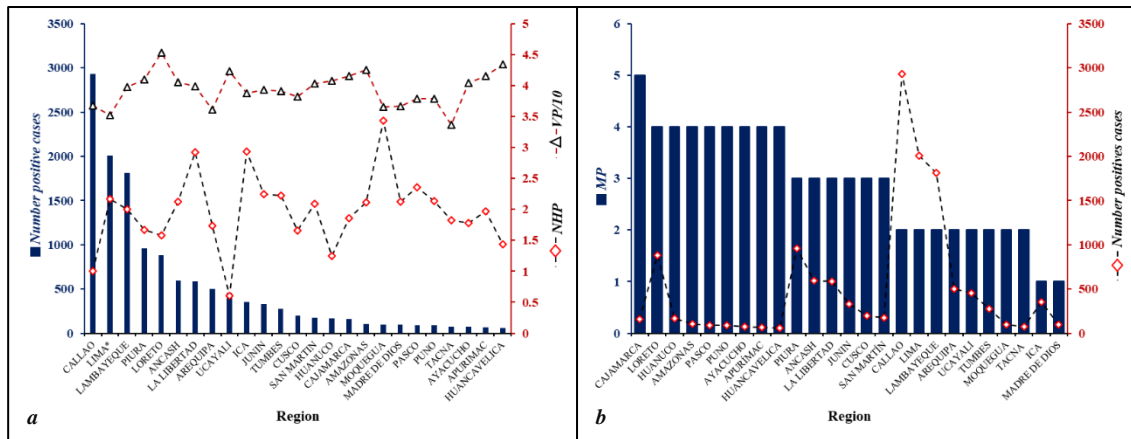


733 **Fig. 3.** Vertical airflow (omega) (Pa/s) at 850 mb. In 'a' the vertical airflow for much of South America is  
 734 shown, while 'b', 'c', 'd' and 'e' show an extension of the vertical airflow characteristics for the regions of  
 735 Peru, in 'b', 'c' and 'd' values close to 0 Pa/s are observed.  
 736

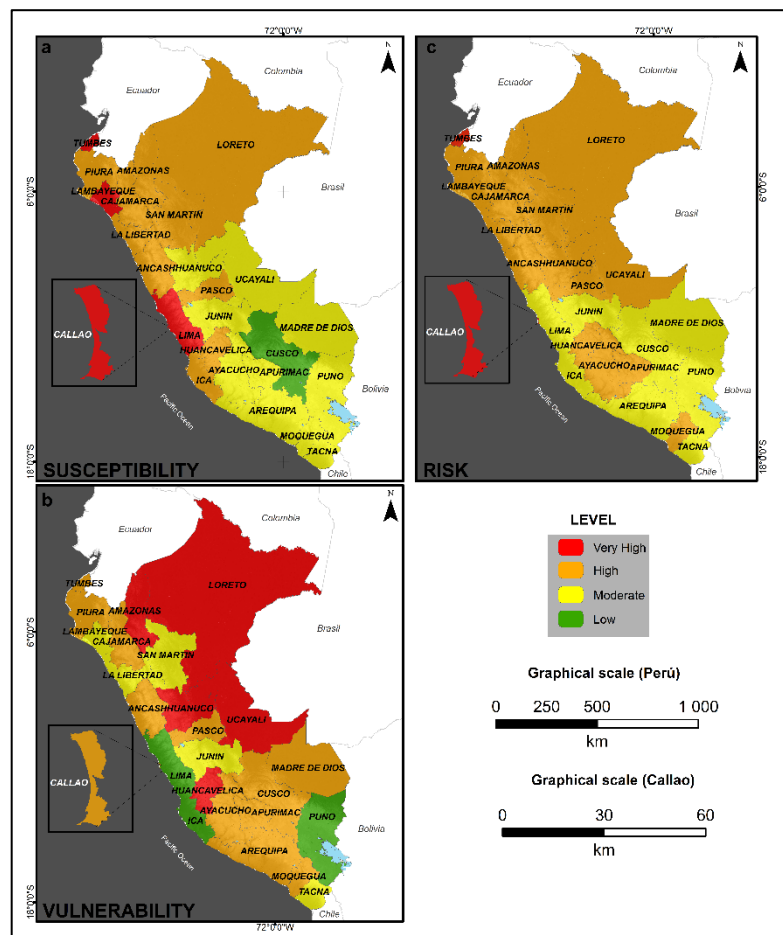


737 **Fig. 4.** Behavior of environmental factors on the accumulation of positive cases by COVID-19 in the regions of  
 738 Peru. **a.** Behavior of TCNO<sub>2</sub> and VA-O on the number of infected by COVID-19; **b.** Behavior of WED and  
 739 SWO on the number of infected by COVID-19. \*The number of COVID-19 infected for the Lima region was  
 740 divided by 10. (TCNO<sub>2</sub>: Tropospheric NO<sub>2</sub> column, VA-O: Vertical Airflow – Omega, WED: Percentage of  
 741 population without faeces treatment, SWO: Percentage of solid waste disposed in open dumps)





742 **Fig. 5.** Behavior of social factors on the accumulation of COVID-19 cases in the regions of Peru. **a.** Behavior of  
 743 NHP (Number and VP on the number of COVID-19 infected; **b.** Behavior of PM on the number of COVID-19  
 744 infected. \*The number of infected by COVID-19 for the Lima region was divided by 10. (NHP: Percentage of the  
 745 number of hospitals per population, MP: Monetary Poverty, VP: Vulnerable population)  
 746



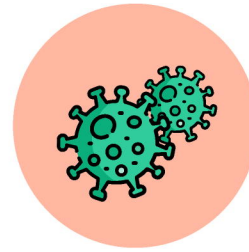
747 **Fig. 6. a.** SARS-CoV-2 virus spread susceptibility map; **b.** SARS-CoV-2 virus spread vulnerability map; **c.**  
 748 SARS-CoV-2 virus spread risk map.  
 749

750

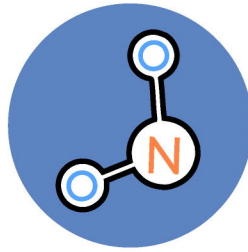




Open Dumps



SARS- CoV-2



Tropospheric  
NO<sub>2</sub> column



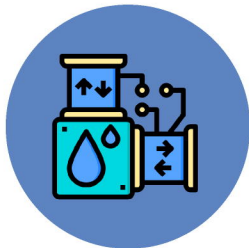
Vulnerable population



Vertical air flow



Number of hospitals



Water without faeces treatment



Monetary poverty

