

Safety-Stock: Predicting the demand for supplies in Brazilian hospitals during the COVID-19 pandemic

Oilson Alberto Gonzatto Junior¹, Diego Carvalho do Nascimento¹, Cibele Maria Russo¹, Marcos Jardel Henriques¹, Caio Paziani Tomazella¹, Maristela Oliveira Santos¹, Denis Neves², Diego Assad², Rafaela Guerra², Evelyn Keise Bertazo², José Alberto Cuminato¹ and Francisco Louzada^{1,*}

¹ *Department of Applied Mathematics and Statistics, Institute of Mathematical and Computer Sciences, University of São Paulo, São Carlos Campus, Brazil*

² *Bionexo, São Paulo, Brazil*

Correspondence*:

* louzada@icmc.usp.br

2 ABSTRACT

3 Background: Many challenges lie ahead for COVID-19, not only related to the acceleration
4 of the pandemic, but also to the prediction of the hospital's personal protective equipment
5 to accommodate the explosive demand. Due to the situation of uncertainty, the hospital
6 administration encourages the excess stock of these materials, causing excess products in
7 some hospitals, but shortages in others. Although three main factors limit the number of patients
8 seen at a hospital: the number of beds available, the number of equipment, and, above all, the
9 number of health professionals available at the hospital, per shift.

10 Objective: In this scenario, a challenge is to build an easy-to-use expert system to predict the
11 demand for personal protective equipment in hospitals during the COVID-19 pandemic, with
12 updating in real-time.

13 Methods: We propose naive statistical modeling, which combines historical data on the
14 consumption of personal protective equipment by hospitals, current protocols for their uses
15 and epidemiological data related to the disease, in order to build predictive models for the
16 demand for personal protective equipment in Brazilian hospitals during the pandemic. We then
17 embed our modeling in the free Safety-Stock expert system, that can provide the safety stock for
18 a particular hospital.

19 Results: The Safety-Stock provides prediction of consumption/demand for personal protective
20 equipment over time, indicating the moment when the hospital reaches maximum consumption,
21 the estimate of how long it will work in this state, and when it will leave it.

22 Conclusion: With our predictions, a hospital may have estimated, based on its stock levels and
23 possible new purchases, its needs related to a specific personal protective equipment, which
24 allows for the adoption of strategies to control and keep the stock at safety levels to the demand,
25 mitigating risk of stock-out. As a direct consequence, it enables interchange and cooperation
26 between hospitals, aiming to maximize the care during the pandemic.

27 **Keywords:** COVID-19 Pandemic, Outbreak, Healthcare Supply Chain, stock-out mitigating risk, easy-to-use free expert system.

NOTE: This preprint reports new research that has not been certified by peer review and should not be used to guide clinical practice.

1 INTRODUCTION

28 As of May 24, 2020, more than 5.4 million confirmed positive cases of COVID-19 worldwide, with 345,000
29 global deaths and more than 360,000 confirmed cases in Brazil (15). Hospital systems around the world
30 have been overwhelmed by the volume of cases, including shortages of personal protective equipment
31 (PPE), critical medical supplies and increasing costs (7). In this scenario of scarce hospital resources, a
32 challenge is to build an easy-to-use expert system to predict the demand for PPE in hospitals during the
33 COVID-19 pandemic.

34 Indeed, due in large part to the increase in demand, technological solutions for the management of
35 processes in the health area are necessary, using historical data from hospital supplies. Factors such as price
36 increases and difficulties in purchasing critical supplies without long terms require intelligent maintenance
37 of the stock so that there is no shortage of supplies in hospitals. It is worth noting that the supply chain
38 represents the second largest expense for hospitals (1).

39 In this paper, we propose naive statistical modeling, which combines historical data on the consumption
40 of PPE by hospitals, current protocols for their uses, and epidemiological data related to the disease, in
41 order to build predictive models for the demand of a hospital for PPE in Brazilian hospitals during the
42 pandemic. We then embed our modeling in an free expert system, hereafter Safety-Stock, that presents
43 predictions of consumption/demand for PPEs overtime in real-time. The Safety-Stock indicates the time
44 when the hospital reaches its maximum consumption, estimates how long it will work in this state and
45 when it will leave it. The structure of our modeling is graphically summarized in Figure 1.

46 With our prediction, a hospital may estimate, based on its stock levels and future purchases, its needs
47 related to a specific PPE, which allows the adoption of strategies to keep stock levels that are adequate to
48 the demand, mitigating risk of stock-out. As a direct consequence, it enables interchange and cooperation
49 between hospitals, aiming to maximize the care during the pandemic.

50 The paper is organized as follows. Section 2 is dedicated to the materials and methods, which were
51 considered here, including data and statistical modeling. The Safety-Stock description and the results of
52 applying our modeling for several different Brazilian hospitals are presented in Sections 3. Some final
53 comments in Section 4 complete the paper.

2 MATERIAL & METHODS

54 Our modeling uses prediction parametric models to meet the PPE demand of a hospital, provided based on
55 the estimated epidemic curve, as well as characteristics related to the hospital, as well as other variables,
56 such as hospitalization rate, frequency of emergency care, number of beds available.

57 Indeed, we propose a mathematical/statistical model that expresses the expected relationship of the
58 consumption of a given PPE over time, with the epidemiological characteristics of the region and also with
59 the internal characteristics of a particular hospital. For this, we take into account three fundamental fronts:
60 the recent historical record of hospital consumption of a PPE; the maximum possible level of consumption
61 of a PPE; the magnitude of the stay in a maximum consumption regime. Each of these characteristics
62 requires the observation of different sources of information and generates meaningful interpretations for
63 the model's construction.

64 The information used, in the modeling process, was obtained from three perspectives, which reverberates
65 the relationship across which point in time will the hospital started working on a maximum consumption
66 regime (for each PPE) and for how long it will remain under this pandemic regime.

Gonzatto et al. Safety-Stock: Predicting the demand for supplies during the COVID-19 pandemic

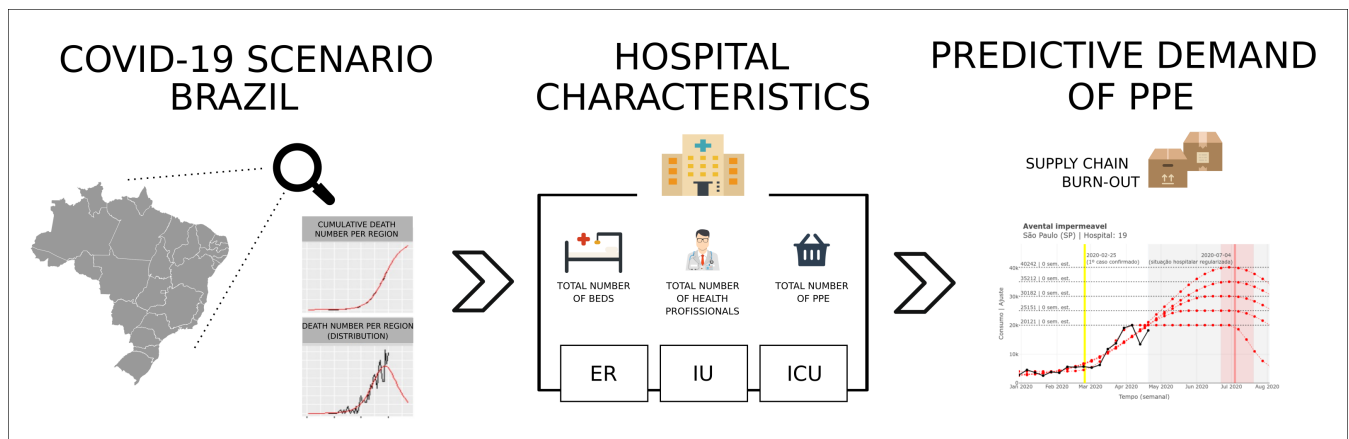


Figure 1. Overview of the structure used in the proposed modeling. The process adopted by the algorithm is to estimate the number of infected patient which will demand some assistance and combined with the hospital capacities and characteristics, predict the PPE related with the COVID-19 pandemic.

67 Indeed, for the development of the proposed approach, the following characteristics related to the hospital
68 are considered:

- 69 • List of PPE and other healthcare supplies, such as hand sanitizer, waterproof aprons, sterile gloves,
70 procedure gloves, surgical mask, and N95 masks and caps.
- 71 • Availability of these supplies in stock at the hospital (units of the items available to be used).
- 72 • Forecast of weekly consumption: this demand is calculated considering the expected number of
73 hospitalizations of the hospital and the consumption of inputs per hospitalization, or the consumption
74 of inputs according to the hospital's occupancy rate (offer as calculated, as we consider the curve). In
75 addition to consumption, it is necessary to know how these data are calculated, and the hospital must
76 check their calculation.
- 77 • The available beds separated or not by the type of case (mild, severe, and critical). For each type of
78 bed, the average number of days of hospitalization will be used (for simulation over a longer period).
79 The hospital will provide both the number of beds and the average occupancy.
- 80 • Value of the safety stock (minimum stock of each input or as calculated by the hospital).
- 81 • Initial conditions: what is the hospital occupation and days that each bed will be occupied (hospital
82 estimate).

83 Besides, the curves related to demand estimated by the city of Brazil were constructed using a growth
84 model to meet demand from the worst-case situation. We also used information related to the hospital
85 concerning PPE and its infra-structure for occupation. Moreover, we consider the prediction of the demand
86 for hospitalizations and the number of health staff.

87 The statistical model that parameterizes these data simulates the use of resources about consumption, and
88 aims to obtain an indication of the safety stock for each PPE, considering the possibility of having a certain
89 amount. Further details of the statistical modeling can be found in Appendix A.

3 RESULTS

90 We developed the Safety-Stock, an easy-to-use expert system, which combines different elements
91 informed by the hospital under analysis. It is freely available in [https://cemeai.shinyapps.io/
92 bionexo_covid19/](https://cemeai.shinyapps.io/bionexo_covid19/) (in Portuguese). The pieces of information needed for feeding the platform are

Gonzatto et al. Safety-Stock: Predicting the demand for supplies during the COVID-19 pandemic

93 divided into three dimensions: *consumption and stock information*, which are hospital general information,
94 such as, location (state and city), PPE general classes, weekly consumption, current stock level; *disease*
95 *behavior in the hospital under study*, which are hospital pandemic dynamic data, such as percentage of
96 hospitalized infected patients, percentage of ICU hospitalized patients, the average length of stay, number
97 of beds and occupancy rate; and *forecast of scenarios related to demand*, which are hospital demand
98 prediction data, such as prediction horizon, security percentage, and maximum consumption.

99 The first step is to estimate the death growth related to each region. A growth curve function is adopted to
100 predict the number of deaths in the city where the hospital lies. For instance, the three-parameters logistic
101 (11, chap. 6) or the Gompertz function (14). Figure 2 panels (a) show each cumulative number of death,
102 exemplified by five cities in Brazil: Belo Horizonte (MG), Recife (PE), Curitiba (PR), Porto Alegre (RS)
103 and São Paulo (SP).

104 Then, based on the process described in Appendix C, we obtain the behavior for regional demand for each
105 city (Figure 2 panels (b)), which expresses a particular behavior concerning the dynamics of the disease.
106 The fraction of such curve that fits a specific hospital depends on the market-share associated with it, and
107 the cut-line that represents its current capacity (in terms of the number of free ICU beds) considers the total
108 number of beds and the respective occupancy rates (Figure 2 panels (c)). With this step, we determine the
109 cut-line that gives us an indication of when the hospital situation begins to regularize.

110 Subsequently, a simulated hospital structure, described in Appendix B, in response to demand focused
111 exclusively on the COVID-19 pandemic, is considered. This simulated hospital's composition was an
112 essential element for estimating the threshold that relates to the maximum consumption of PPE, the number
113 of beds available, the size of the health team, and the used protocol. With this step, we defined a technically
114 standardized level for maximum consumption, on which we established some variation in its surroundings
115 to contemplate possible changes in the protocol due to the pandemic situation.

116 The next step consists in adjusting the conditioned model to the information obtained in the previous
117 steps. Thus, we established a forecast for the weekly PPE consumption of a hospital under analysis
118 through models considering some possible scenarios. Figure 3 presents the estimate in which the pandemic
119 presents a potential risk to the hospital situation as a result. The generated scenarios consider the historical
120 consumption of a PPE in particular, the theoretical premises for the use of PPE based on the magnitude of
121 the hospital, and the effects of the pandemic observed in its region. The gray margin exposes the forecast
122 horizon.

123 Still, in Figure 3, each consumption limit line also indicates the security of the available stock in terms of
124 the number of weeks that the current stock would last if there were no new entries. The red dashed lines
125 represent upper limits for consumption, considering the growth trend of previous records and different total
126 consumption levels, the transparent red margins represent the 2.5% and 97.5% limits for predicted curve.
127 The blue dot denotes the current stock position. The transparent blue margins represent the minimum and
128 maximum stock limits. The yellow line showed the date when the first case of COVID-19 was identified in
129 its municipality. The vertical line in light-blue represents a cut-line from which we believe that the hospital
130 situation will return to normal. The transparent margin around it expresses the uncertainty involved in this
131 expectation.

132 This value for maximum consumption will be given as input to the model (submitted in the Maximum
133 consumption field), and it will be recalculated, making the specific analysis to hospital reality (3b). The red
134 line is the upper limit for consumption, where growth occurs with the intensity outlined by the historical
135 record and considering its consumption protocol.

Gonzatto et al. Safety-Stock: Predicting the demand for supplies during the COVID-19 pandemic

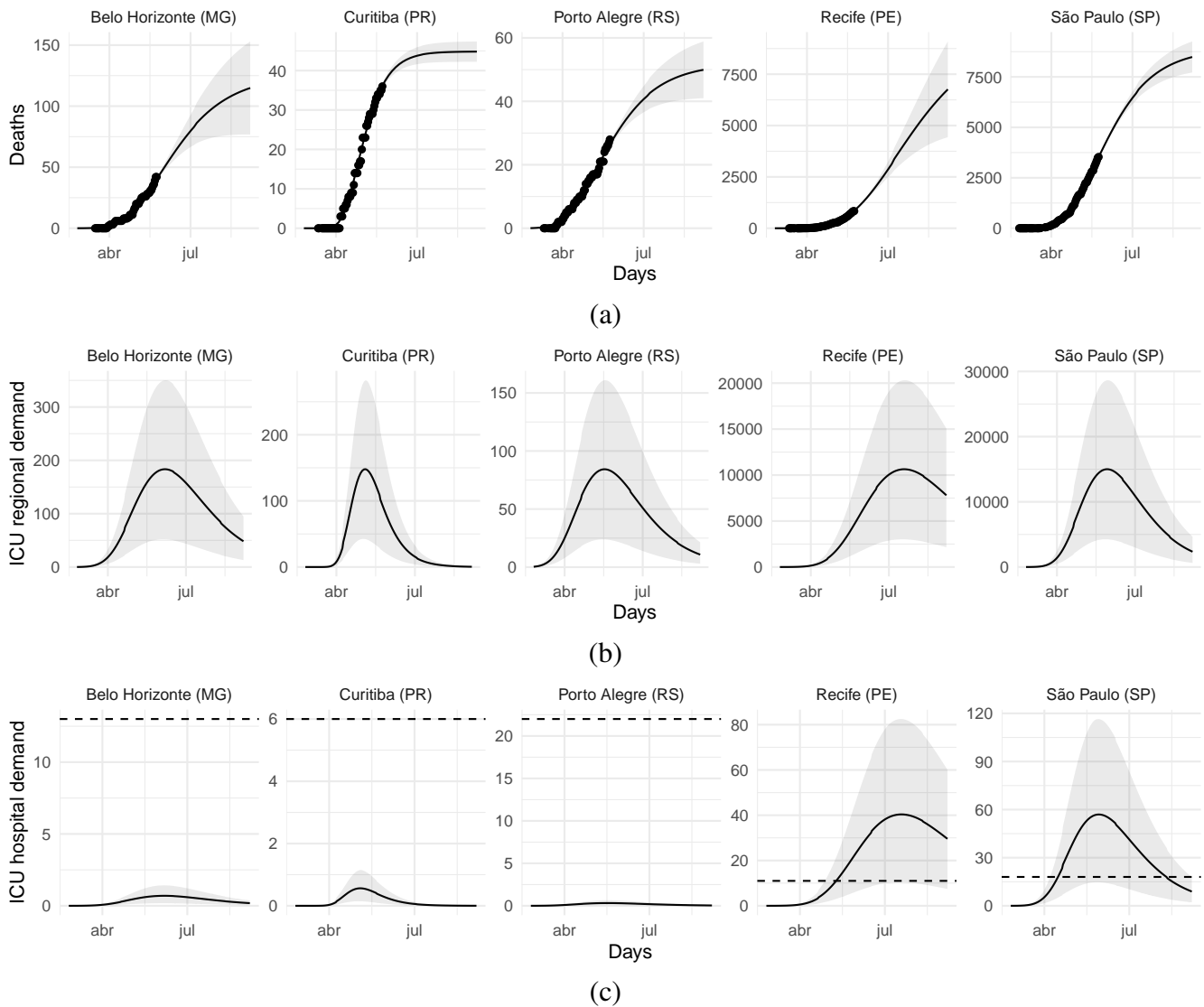


Figure 2. Pandemic dynamic estimation for five cities in Brazil. The selected cities are Belo Horizonte (MG), Recife (PE), Curitiba (PR), Porto Alegre (RS) and São Paulo (SP). The top five figures represent the cumulative death rate per region. The five center figures express the expected dynamics of the disease. The bottom five figures represent the market-share fraction expected to be attended by the analyzed hospital.

136 This growth ceases from the moment the hospital situation begins to regularize (in the present example,
 137 we believe that around 08/27/2020). The construction of this cut-line takes into account the situation of the
 138 hospital in facing the pandemic.

139 The board of the hospital’s under analysis, in the face of the pandemic, may use the cut-line as an aid in
 140 decision making, estimated by the considered approximations and assumptions, supporting the hospital’s
 141 regularization situation by the following steps:

- 142 1. Based on the death count due to COVID-19. We obtain an estimate for this behavior, and, from it, we
 143 add other sources of uncertainty, such as under-reporting factors.
- 144 2. Conditioning the real death curve, we consider the estimated relationship between the death and
 145 infected curve, added by a randomness factor.

Gonzatto et al. Safety-Stock: Predicting the demand for supplies during the COVID-19 pandemic

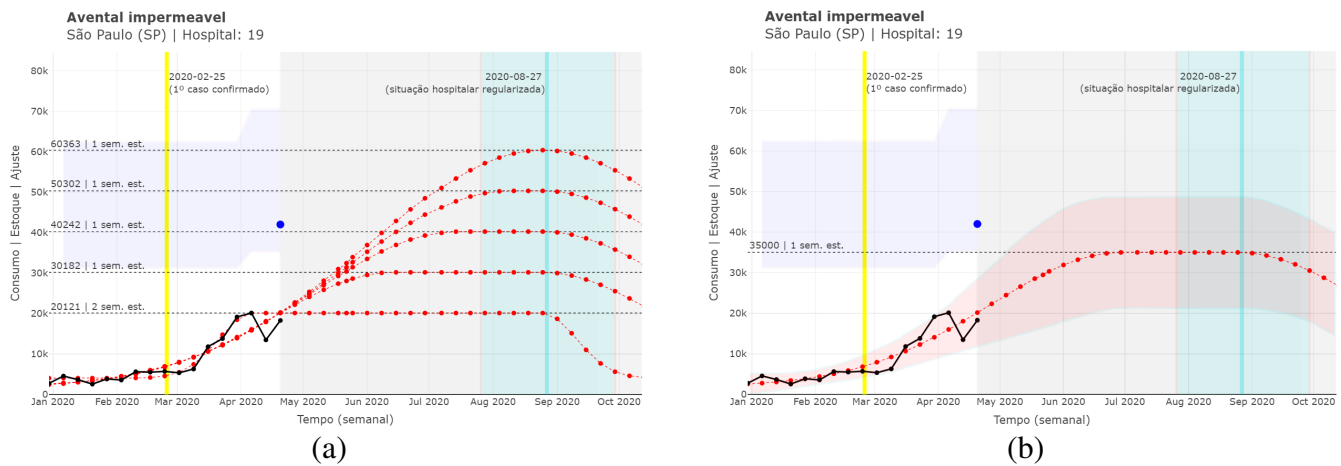


Figure 3. Dynamic estimation towards a PPE, considering the simulated hospital. The black line and dots represent the consumption history available in the spreadsheet. The dashed lines (horizontal) in black represent possible consumption limits. Left-hand panel (a) display the different PPE level demands based on the hospital capacities, meanwhile right-hand panel (b) display the chosen option according, e.g. to the supply chain manager. Online platform print, which is available in Portuguese.

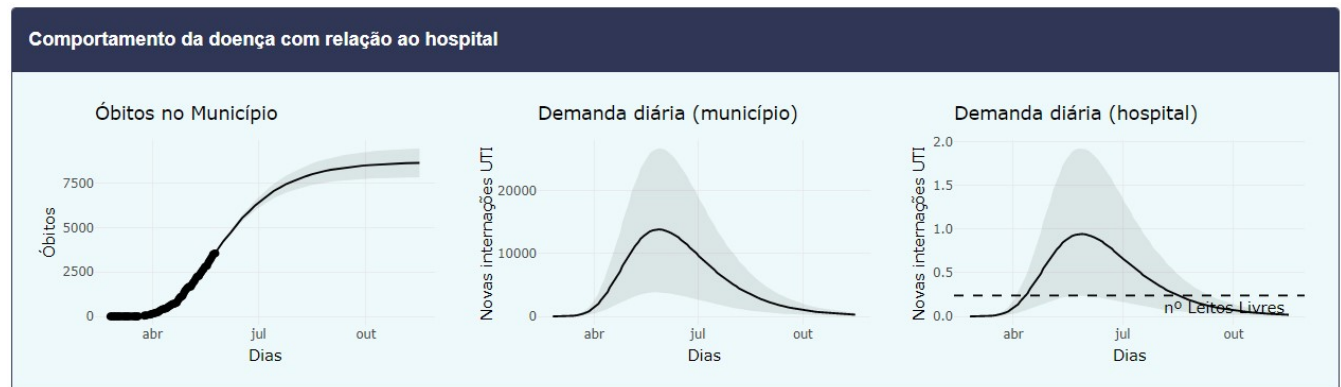


Figure 4. Pandemic dynamic per region based on the analyzed hospital. Left-hand panel plots the death growth, center panel related to the region’s demand curve, and right-hand panel display the daily estimation demand of the hospital. Online platform print, which is available in Portuguese.

- 146 3. Subsequently, via the infected curve, estimates of the fraction of hospitalized and, of those hospitalized,
- 147 those who need ICU admission.
- 148 4. From the curve of intensive care unit inpatients, we considered the average number of days in
- 149 the intensive care unit, and, given this consideration and the randomness involved, we took an
- 150 approximation, even if gross, of the curve of recoveries.
- 151 5. The difference between the intensive care unit inpatients curve and the recoveries curve leads us to a
- 152 hospital demand curve for intensive care unit beds.

153 The fraction of the curve that applies to the hospital under analysis is considered an estimate by market-

154 share. In the first panel (left) in the Figure 4 estimates the death dynamics of the Brazilian municipalities

155 (extracted by the website brasil.io), later this growth curve helped in the corrected estimation bypassing

156 the underreporting of COVID-19, see more details in the appendices. The central panel is related to the

157 region’s demand curve, and finally, the right panel adds the daily demand of the hospital (being a fraction

158 of the region answered by market-share).

Gonzatto et al. Safety-Stock: Predicting the demand for supplies during the COVID-19 pandemic

159 The total sum will represent the Forecast Horizon can be increased by a percentage defined in the %
160 security field. The fragmentation of this forecast according to the percentage of consumption of each item
161 individually, in the last 30 days.

162 As an auxiliary tool, the expected demand for each group of commonly used items in the pandemic will
163 be broken down into individual products (with different references). This table can be exported and aims to
164 consider the different scenarios that relate to the maximum consumption.

165 Perhaps an essential point of the Safety-Stock is the accumulated record of hospitals that need to be
166 helped, and those that can help others. This initiative can be materialized with an indicator that tells us if
167 the hospital can help, or needs help, after analyzing the situation of lack or over-stock for each general
168 class of PPE or the need to purchase more supplies.

169 To learn about the Safety-Stock flow of information, interested readers can refer to Appendix D, where
170 we illustrate the flow of information that runs internally in expert system, according to Figure 5.

4 FINAL COMMENTS

171 Prediction modeling was developed by combining historical hospital data and the disease growth curve.
172 The idea is to provide a safety stock, avoiding a possible lack of PPE during the COVID-19 pandemic. The
173 developed the Safety-Stock, which provides to the hospital managers a prediction for the consumption of
174 several PPEs, taking into account the expected number of patients that arrive in the emergency room with
175 COVID-19 symptoms, as well as the expected percentage of those that need intensive care. As a result, the
176 safety stock of PPEs can be estimated. Consequently, it may be rearranged among geographically close
177 hospitals, preventing attendance restrictions, and avoiding unnecessary expenses.

178 The proposed approach is naive in different ways. For instance, we chose to assume a random structure
179 based on a symmetric probability distribution for the errors, both in the adjust of the consumption curve
180 (C_t) and the death curve (Y_t). The choice of such distributions may not be the most appropriate one. We use
181 some indirect results. In other words, the raw data directly accessed in the statistical estimation processes
182 correspond to the recent history of the consumption of any PPE and the death record in a particular
183 city. All other information carries subjectivities and uncertainties that we cannot quantify in light of the
184 analyzed data. Although, the theoretical support of the studies that provided such information allowed us to
185 understand the observed average behaviors as premises in our modeling. Finally, the considered growth
186 models are simple.

187 All of these points can be refined and addressed in future studies. For instance, assign a possibly
188 asymmetric probability distribution for the errors, joint statistical modeling the various information, with
189 data directly accessed by us, and consider other growth models and then use statistical selection among
190 different models.

191 On the other hand, naivety also has some attractive advantages. Scalability is one of them since complex
192 models commonly require computationally intensive methods, many of them need a more substantial
193 amount of information to express good results and the computational processing time is considerably
194 longer. In this sense, our naive approach allows the use and diffusion of the proposed methodology on a
195 broader spectrum of possibilities, such as the use of our expert system with updating in real-time. Another
196 interesting point is that researchers from other areas can clearly understand the methodology, and its results
197 can be effectively internalized. Besides, the integrated set of small independent solutions, such as the
198 proposal presented here, can serve as a basis for more in-depth investigations by expressing insights that
199 are difficult to perceive in individual analyzes.

Gonzatto et al. Safety-Stock: Predicting the demand for supplies during the COVID-19 pandemic

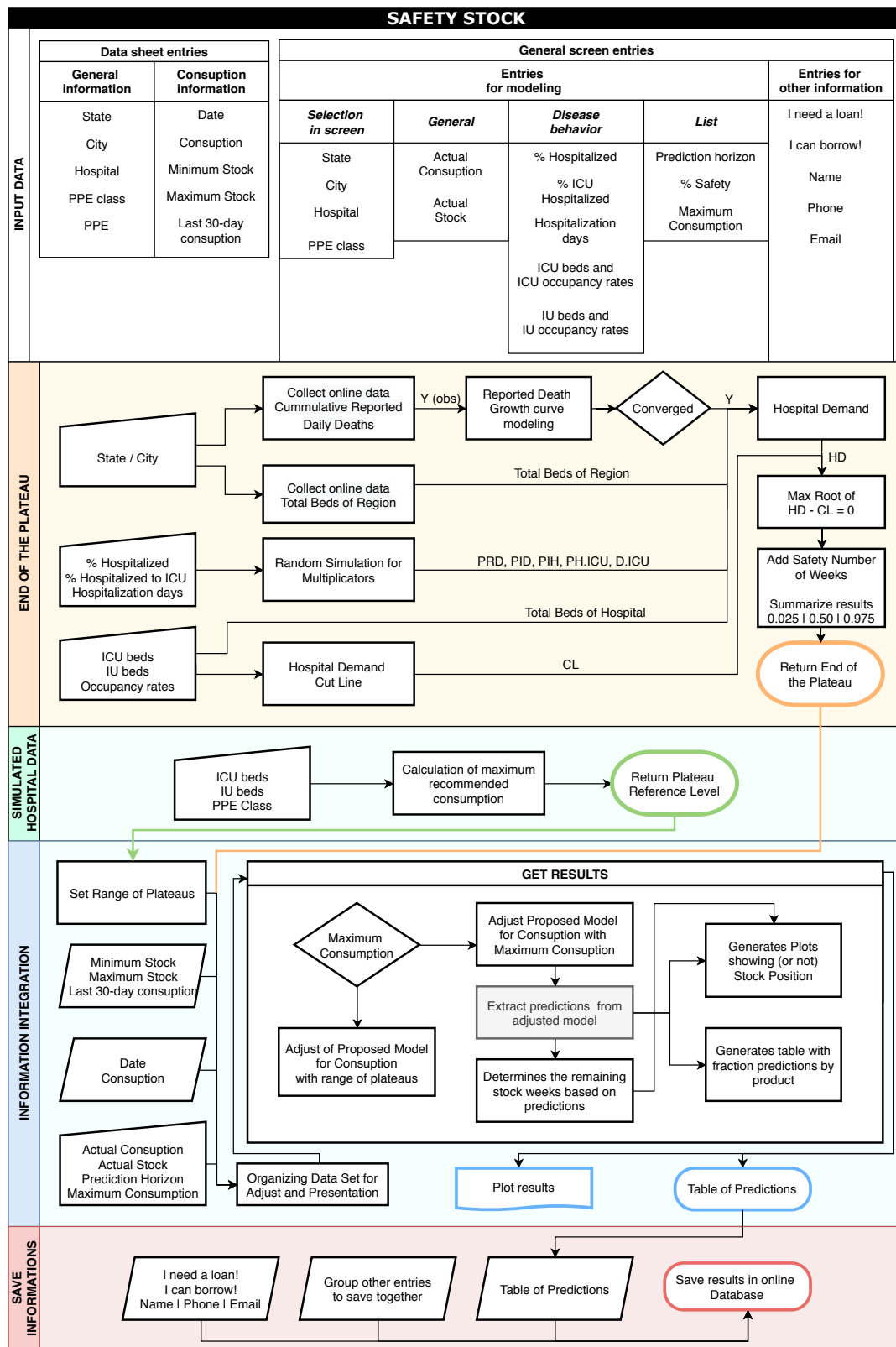


Figure 5. Safety-Stock information flow.

200 Moreover, results obtained with the Safety-Stock were exposed to some PPE managers of some Brazilian
 201 hospitals. The degree of agreement with the reality of their practical activities encourages us the continuity
 202 of the development, maintenance, and dissemination of our research and free expert system.

CONFLICT OF INTEREST STATEMENT

203 The authors declare that the research was conducted in the absence of any commercial or financial
204 relationships that could be construed as a potential conflict of interest.

ACKNOWLEDGMENTS

205 The research was carried out using the computational resources of the Center for Mathematical Sciences
206 Applied to Industry (CeMEAI), funded by FAPESP (grant number 2013/07375-0). José Alberto Cuminato
207 and Francisco Louzada are supported by the Brazilian agency CNPq (grant number 302954/2015-4 and
208 301976/2017-1, respectively).

APPENDIX A – STATISTICAL METHODOLOGY

209 Consumption/demand curve. In principle, we consider a random variable C_t denoting the *consumption of a*
210 *given PPE over time t*, normally distributed with mean μ_t and variance σ^2 .

The adopted statistical model aims to parameterize the growth behavior of the demand for a product, followed by a (possibly) period of constant high demand, then accompanied by a decline in demand. Thus, μ_t is assumed as a five parameters function given by

$$\mu_t = f(t; a, b, c, d, e) = \begin{cases} a + (d - a) \exp \left\{ -\frac{(c - t)^2}{b} \right\}, & \text{if } t \leq c, \\ d, & \text{if } c < t \leq e, \\ a + (d - a) \exp \left\{ -\frac{(t - e)^2}{b} \right\}, & \text{if } t > e \text{ or } c \geq e, \end{cases} \quad (1)$$

211 where a denotes the magnitude of basic consumption, here assumed to be constant, b denotes the intensity
212 of growth/decrease in consumption over time, c denotes the point in t that the maximum consumption is
213 reached, d denotes the magnitude of maximum consumption, e denotes the point in t that consumption
214 begins to decrease.

215 According to the variation of parameters a, b, c, d and e , some possible behaviors for the mean of the
216 proposed model can be observed in Figure 6.

217 The described proposal that relates the model C_t with the consumption curve with the regional
218 epidemiological characteristics and interior features of a particular hospital takes into account three
219 fundamental aspects. The recent historical record of hospital consumption of a given PPE, The maximum
220 consumption level of the PPE, How long the hospital stays on the maximum consumption level. Each
221 of these features requires the observation of distinct information sources and generate meaningful
222 interpretations for the model building, as follows.

- 223 1. The recent historical record of hospital consumption of a given PPE provides information of the
224 baseline demand before the COVID-19 pandemic (represented by the model parameter a) and evidence
225 of changing in the consumption regime (represented by the model parameter b);
- 226 2. The maximum level of PPE consumption considers the maximum capacity and the totality of the
227 hospital staff dedicated to COVID-19 patients care (this maximum level is represented by the parameter
228 d of the model and, as it is a fixed and particular characteristic of each hospital and PPE, it is set as a
229 known parameter). This information is determined based on the procedure described in Appendix B;

Gonzatto et al. Safety-Stock: Predicting the demand for supplies during the COVID-19 pandemic

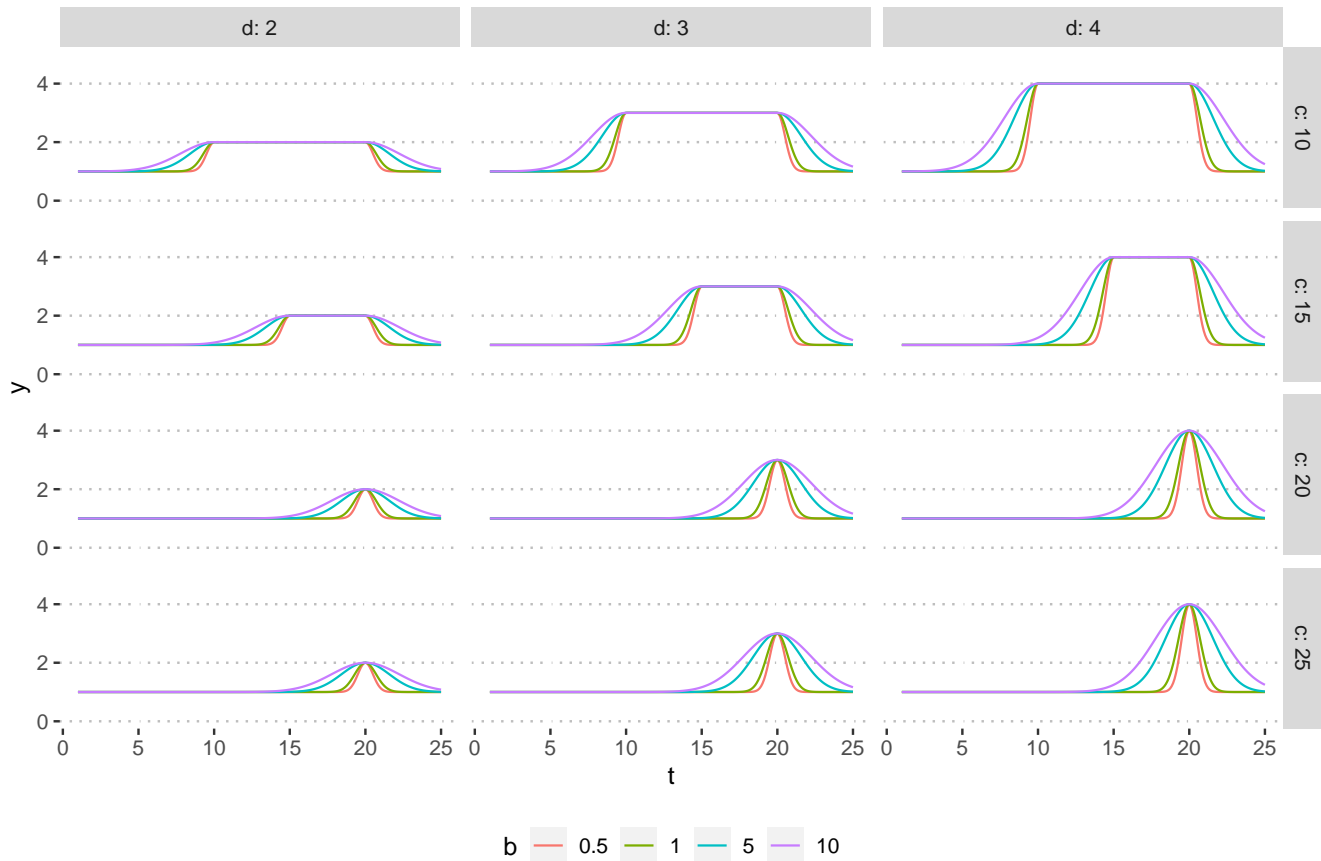


Figure 6. Some possibly behaviors of μ_t for fixed values of $a = 1$, $e = 20$ and $b = 0.5, 1.0, 1.5, 10$, $c = 10, 15, 20, 25$ and $d = 2, 3, 4$.

230 3. The time spent on the maximum consumption regime (whose endpoint in t is represented by the e
 231 parameter of the model) is determined by the use of hospital information and the region around it. It is
 232 estimated indirectly and is subsequently used in the model for the consumption curve, C_t , as a fixed
 233 parameter (just like the parameter d). The determination of the e parameter, defined as known in the
 234 model for C_t), is done as described in Appendix C.

235 The combined use of information obtained from these three perspectives makes the theoretical model
 236 adopted to relate the epidemiological characteristics of the region, as well as demand features of the supply
 237 chain of the hospital under study.

238 In this sense, as the parameters, d and e are determined indirectly (see Appendices B and C) therefore
 239 considered known in the curve expressed by μ_t , the parameters a, b and c must be estimated by some
 240 estimation process.

242 Estimation Process. We define the random structure, based on a set of observations from recent
 243 consumption history $\mathbf{C} = (C_{t_1}, \dots, C_{t_n})$, $C_{t_i} = f(t_i; a, b, c) + \varepsilon_i$, where $\varepsilon_i \stackrel{iid}{\sim} N(0, \sigma^2)$, for $i = 1, \dots, n$.

Gonzatto et al. Safety-Stock: Predicting the demand for supplies during the COVID-19 pandemic

244 The parameters $\theta = (a, b, c) \in \sigma^2$ are estimated by considering the log-likelihood function, given by

$$\ell(\theta, \sigma^2) = -\frac{n}{2} \log \sigma^2 - \frac{1}{2\sigma^2} \sum_{i=1}^n \left[c_{t_i} - f(t_i; \theta) \right]^2 = -\frac{n}{2} \log \sigma^2 - \frac{1}{2\sigma^2} \text{RSS}(\theta), \quad (2)$$

245 where $\text{RSS}(\theta)$ denotes the residual sum of squares.

246 If we use non-informative or sufficiently vague a priori information for the parameters, we have that an
247 estimator for θ and σ^2 can be obtained by maximizing (2), which occurs with the minimization of $\text{RSS}(\theta)$
248 (θ is independent of σ^2). In addition, $\partial \ell / \partial \sigma^2 = 0$ has a solution given by $\hat{\sigma}^2 = \text{RSS}(\hat{\theta})/n$, while $\hat{\theta}$ is the
249 least squares estimator of θ (9). The standard error of the estimators can be obtained based on the Fisher
250 Information matrix and the prediction intervals are determined using the Delta Method (4).

APPENDIX B – SIMULATED HOSPITAL DATA

251 In order to evaluate the proposed model, a simulated hospital environment was considered, based on
252 ANVISA, the Brazilian Health Regulatory Agency (2). This simulation serves as a general example for the
253 hospitals in which the model will be applied, and its characteristics (staff and material consumption) were
254 defined using data provided by experts.

255 The hospital allocates its patients into three categories: Inpatient Units (IU), Intensive Care Units (ICU),
256 and Emergency Room (ER). IU patients are in a non-critical state, while ICU patients are in a critical state,
257 demanding more human resources and materials. The number of hospital beds is divided between both
258 units, and IU beds can be turned into ICU if needed. ER patients are on hold to be transferred to either IU
259 or ICU. Therefore they are not considered to be occupying hospital beds.

260 The allocation of doctors, nurses, and physiotherapists is shown in Table 1. The number of IU and ICU
261 needed staff is given based on the number of occupied beds, except for doctors for IU patients, which is
262 given by the number of total hospital beds, regardless of their occupation. Column IU/RRT shows the staff
263 allocated to IUs as Rapid Response Team (RRT). In these columns, the numbers represent the staff needed
264 for 12-hour shifts, while numbers on the ER column represent the daily staff needed for a unit with an
265 average of 10.000 treatments per month, which also work on 12-hour shifts.

Table 1. Staff allocation in the simulated hospital.

Staff	IU	IU/RRT	ICU	ER
Doctors	1 / 10 total beds	1 / 100 beds	1 / 10 beds	20
Nurses	1 / 6 beds	1 / 100 beds	1 / 8 beds	10
Physiotherapists	1 / 20 beds	1 / 100 beds	1 / 10 beds	-

IU e ICU: values for a 12-hour shift; ER: daily values for an unit with 10.000 monthly treatments.

266 Table 2 shows the consumption of critical material per professional during a 12-hour shift. These values
267 estimate what is used taken from a series of premises and observations on real hospitals.

268 The consumption of other essential materials needs to be estimated by other means. The use of Hand
269 Sanitizer varies from hospital to hospital since it can be replaced by regular soap. In this case, it is assumed
270 the daily use of 20mL for each IU and ICU patient and 5mL for each ER suspected patient (which is
271 estimated as 50%). Doctors, nurses, and physiotherapists use N95 Masks, at a rate of 1 each 14-day period
272 or ten shifts, thus depending on the staff rotation rather than hospital occupancy.

Table 2. Material consumption in the simulated hospital.

Material	Doctor	Nurse	Physiotherapist
Surgical Mask (unit)	6	6	6
Waterproof Apron (unit)	1	2	2
Hospital Cap (unit)	1	1	1
Procedure Gloves (pair)	5	10	10
Sterile Gloves (pair)	2	-	20

Average values per professional in a 12-hour shift.

273 Lastly, as a premise, the obtained values are increased by 40% to consider material usage from cleaning
274 and technical staff, visitors, and incoming patients, as well as hospital waste.

APPENDIX C – CALCULATING THE END OF THE PLATEAU

275 For the determination of a cut-line, from which the number of beds available in the hospital becomes again
276 higher than the daily demand of patients in ICU (represented by the parameter e in the model (1)), we
277 used the information of the number of notified deaths accumulated over time (here denoted by the random
278 variable Y_t) and other hospital information as described below.

279 The growth curve of Y_t can be estimated by a nonlinear growth curve model, such as the Logistic model
280 (11, chap. 6), Gompertz, Richards (14), Von Bertalanffy (6), among others. The selection between the
281 most appropriate model for each region can be made based on some statistical criteria such as AIC, AICc,
282 BIC (see, for instance, 16). The estimation process is analogous to what is described in Appendix A.

283 From the estimated curve for Y_t , we consider a brief simulation study to approach the *hospital demand*
284 curve. We incorporate other sources of uncertainty, such as underreporting factors and lethality rates,
285 among others. The characterization of such sources of uncertainty has theoretical support in studies already
286 published, which support the average behavior defined here as a known premise. This approach may
287 represent a current limitation of the study since we do not contemplate the joint analysis of all the factors
288 involved, which can be incorporated for future studies, though such information has already been obtained
289 and validated by other sources.

290 Thus, the steps performed are the following:

- The *reported deaths* curve (Y_t) is a fraction of the *actual deaths* (Y_t^*), which means that

$$Y_t = P_{RD} \times Y_t^*, \text{ where } P_{RD} \sim \text{Beta}(\alpha_1, \beta_1).$$

291 The probability distribution of P_{RD} (proportion of reported deaths) has been defined so that we
292 consider the parameters α_1 and β_1 to be known, such that $\mathbb{E}(P_{RD}) = \alpha_1 / (\alpha_1 + \beta_1) = 0.4$ and
293 $SD(P_{RD}) = \sqrt{\alpha_1 \beta_1 / [(\alpha_1 + \beta_1)^2 (\alpha_1 + \beta_1 + 1)]} = 0.05$. Such assumptions take into account the
294 researchers such as (12, 3) which indicate that the number of *real deaths* is around 2.6 times the
295 number of *reported deaths*.

- We understand that the *real deaths* curve (Y_t^*) is proportionally related to the *infected* curve (I_t), as follows,

$$Y_t^* = P_{ID} \times I_t, \text{ where } P_{ID} \sim \text{Beta}(\alpha_2, \beta_2).$$

296 The probability distribution of P_{ID} (proportion of infected-to-death) was defined considering
297 known α_2 and β_2 , such that $\mathbb{E}(P_{ID}) = \alpha_2 / (\alpha_2 + \beta_2) = 0.0037$ and $SD(P_{ID}) =$
298 $\sqrt{\alpha_2 \beta_2 / [(\alpha_2 + \beta_2)^2 (\alpha_2 + \beta_2 + 1)]} = 0.0001$. The distribution parameter of the random variable P_{ID}

Gonzatto et al. Safety-Stock: Predicting the demand for supplies during the COVID-19 pandemic

299 was set based on the results of (13, 5) which pointed out that the actual lethality rate of the disease is
300 around 0.37%;

- The *hospitalized* (H_t) and *hospitalized in ICU* ($H_{ICU,t}$) curves are assumed to correspond to fractions of the curve of *infected*, as follows

$$H_t = P_{IH} \times I_t, \text{ where } P_{IH} \sim \text{Beta}(\alpha_3, \beta_3).$$

and

$$H_{ICU,t} = P_{HICU} \times H_t, \text{ where } P_{HICU} \sim \text{Beta}(\alpha_4, \beta_4).$$

301 Similarly, the probability distribution of P_{IH} (proportion of infected-to-hospital) and P_{HICU} (proportion
302 of hospitalized-to-ICU) are defined as $\mathbb{E}(P_{IH}) = \mathbb{E}(P_{HICU}) = 0.25$ and $\text{SD}(P_{IH}) = \text{SD}(P_{HICU}) =$
303 0.05 . This is justified since (8, 5) show that approximately 25% of the infected need some hospital
304 care, and 25% of those need a ICU.

- The *recovered* curve (R_t), from ICU situation, was approximated by the translate of the difference between *hospitalized in ICU* curve ($H_{ICU,t}$) and the *real deaths* curve (Y_t^*), as follows (17)

$$R_t \approx (H_{ICU} - Y^*)_{t+D_{ICU}}, \text{ where } D_{ICU} \sim \text{Poisson}(\lambda).$$

305 The probability distribution set to D_{ICU} (days in ICU) takes into account that $\mathbb{E}(D_{ICU}) = \lambda = 14$,
306 since (10) indicated that the clinical recovery for patients in ICUs is approximately two weeks.

- In addition, we understand that the difference between the *hospitalized in ICU* curve ($H_{ICU,t}$) and the *recovered* curve (R_t) of the ICU situation approximates the *regional demand* curve (RD_t) for ICU beds. Therefore

$$RD_t \approx (H_{ICU} - R)_t.$$

- Finally, we assume that the *hospital demand* curve (HD_t) is a fraction of the *regional demand* curve (RD_t), weighted by market-share (MS) associated with a particular hospital. Therefore

$$HD_t = \text{MS} \times RD_t.$$

307 The multiplier MS was not considered as a random variable. Its value is determined by the number
308 of beds in the hospital and the number of beds available in the region close to the hospital, whose
309 information is collected directly from a Brazilian health database called DataSUS.

Now, once we approximated the *hospital demand* curve (HD_t), we have established a cut-line for the hospital's service capacity. This is done by considering the number of IU and ICU beds (named as IU_B and ICU_B , respectively) and their occupancy rates (named as OR_{IU} and OR_{ICU} , respectively). Since around 20% of IU beds can be upgraded to act as an ICU bed, the cut-line is given by

$$\text{CL} = \text{ICU}_B \times (1 - \text{OR}_{ICU}) + 0.2 \times \text{IU}_B \times (1 - \text{OR}_{IU}).$$

310 Thus making $HD_t = \text{CL}$, we identify the cutoff point, $t^{(1)}$, which indicates that the ICU service capacity
311 has been exceeded (if applicable) and the point at which it has returned to normal is $t^{(2)}$.

312 The point $t^{(2)}$ and all the uncertainty associated with it, via the variability of P_{RD} , P_{ID} , P_{IH} , P_{HICU} , and
313 D_{ICU} , result in a range of possible time points, where the hospital situation is expected to return to normal.

Gonzatto et al. Safety-Stock: Predicting the demand for supplies during the COVID-19 pandemic

314 The average value of these estimates is set as the cut-line represented by the parameter e of the model (1)
315 (assumed known in this stage of the modeling).

APPENDIX D – SAFETY STOCK TOLL INFORMATION FLOW

316 In this appendix, we illustrate the flow of information that runs internally on the Safety-Stock (Figure
317 5). All input data is listed in the INPUT DATA panel. The remaining processes are divided into four
318 large blocks: 1) The END OF THE PLATEAU panel outlines the cut line estimation process from which
319 we understand that the hospital situation begins to regularize. 2) The SIMULATED HOSPITAL DATA
320 panel represents the stage of determining the maximum consumption level used as a reference in the later
321 stage. 3) The INFORMATION INTEGRATION panel shows the flow of joining the information obtained
322 previously, for the construction and presentation of the solution. 4) Finally, the SAVE INFORMATION
323 panel condenses the records that must be saved in the online database.

324 In the INPUT DATA panel, a categorization of the entries can be seen. The first one deals with the
325 datasheet loaded by the user of the Safety-Stock and corresponds to the identification information (of
326 the region, hospital, and PPE class), the historical consumption record, and the stock requirements. All
327 other information is provided via the Safety-Stock screen. Some of them deal with empirical aspects about
328 the disease's behavior in the region of the hospital (or the hospital itself), such as the average number
329 of days that a patient remains in the ICU, or other epidemic information that is particularized in specific
330 health centers. All the above information is defined by default (regarding recent medical literature) at the
331 beginning of the user's section. However, it can (and should) be modified to meet the specific practical
332 reality of that hospital.

333 Other necessary entries deal with some small configurations about the forecast stage of the model, such
334 as the forecast horizon and the safety percentage added.

335 The second frame, END OF THE PLATEAU, link the flow of information used to determine the cut line
336 represented by the parameter e of the model (1). Considering the region selected by the user, a module of
337 the Safety-Stock searches online for the death record in that region, updated daily. Besides, there is a query
338 in the dataSUS database about the number of beds available in the given location. Another module adjusts
339 a growth curve to the data collected for cumulative death number. Some transformations will be made in
340 order to obtain the hospital demand curve. The transformations are made with the aid of some multipliers
341 (which weigh the death curve, P_{IH} , P_{HICU} , P_{ID} , among others), and a factor that translates the curve over
342 time (D_{ICU}). The multipliers are obtained by a module via random simulation, considering the exposed in
343 Appendix 4. Having access to the hospital's demand curve in another block of code, we determined some
344 possible dates for the plateau's end, considering the cut line obtained based on the entries associated with
345 the number of beds and respective occupations.

346 In the third panel, SIMULATED HOSPITAL DATA, the reference for maximum consumption level is
347 obtained by a module that makes use of information on the number of total beds, and the product class.
348 The dimension of this plateau takes into account all aspects listed in Appendix 4.

349 The fourth table expresses the joint use of the information obtained in Tables 1 to 3. The *maximum*
350 *consumption* stipulated by the user indicates which stage of the analysis he is. If this entry is NULL then it
351 means that the consumption curve adjustment model considers a range of plateaus based on the reference
352 plateau (obtained in third 3). On the other hand, if the user has already defined the *maximum consumption*,
353 the model fits a single curve, associated with that consumption, at the end of the analysis, this will be the
354 curve used to make and save the predictions. Other modules are in charge of generating the prediction

Gonzatto et al. Safety-Stock: Predicting the demand for supplies during the COVID-19 pandemic

355 table and the graph that outlines the adjusted model compared to the observed data and other relevant
356 information.

357 The last panel summarizes the information that will be exported to the company's database responsible
358 for an intermediate between hospitals that self-declared as potential helpers (for the loan or exchange of
359 PPE) and those who declared that they need help.

REFERENCES

- 360 1 .Abdulsalam, Y. and Schneller, E. (2019). Hospital supply expenses: An important ingredient in health
361 services research. *Medical Care Research and Review* 76, 240–252. doi:10.1177/1077558717719928.
362 PMID: 29148349
- 363 2 .[Dataset] Anvisa (2020). Orientações para serviços de saúde: Medidas de prevenção e controle
364 que devem ser adotadas durante a assistência aos casos suspeitos ou confirmados de infecção
365 pelo novo coronavírus (sars-cov-2). [http://portal.anvisa.gov.br/documents/
366 33852/271858/Nota+T%C3%A9cnica+n+04-2020+GVIMS-GGTES-ANVISA/
367 ab598660-3de4-4f14-8e6f-b9341c196b28](http://portal.anvisa.gov.br/documents/33852/271858/Nota+T%C3%A9cnica+n+04-2020+GVIMS-GGTES-ANVISA/ab598660-3de4-4f14-8e6f-b9341c196b28). Accessed: 2020-25-05
- 368 3 .[Dataset] Burn-Murdoch, J., Romei, V., and Giles, C. (2020). Global coronavirus death toll could be
369 60% higher than reported. *Financial Times – Coronavirus*. [https://www.ft.com/content/
370 6bd88b7d-3386-4543-b2e9-0d5c6fac846c?utm_source=Nature+Briefing&
371 utm_campaign=527dbb4637-briefing-dy-20200428&utm_medium=email&utm_
372 term=0_c9dfd39373-527dbb4637-43284197](https://www.ft.com/content/6bd88b7d-3386-4543-b2e9-0d5c6fac846c?utm_source=Nature+Briefing&utm_campaign=527dbb4637-briefing-dy-20200428&utm_medium=email&utm_term=0_c9dfd39373-527dbb4637-43284197) (Accessed: 2020-27-05)
- 373 4 .Casella, G. and Berger, R. L. (2002). *Statistical inference*, vol. 2 (Duxbury Pacific Grove, CA)
- 374 5 .[Dataset] CDC (2020). Interim clinical guidance for management of patients with confirmed
375 coronavirus disease (covid-19). [http://www.cdc.gov/coronavirus/2019-ncov/hcp/
376 clinical-guidance-management-patients.html](http://www.cdc.gov/coronavirus/2019-ncov/hcp/clinical-guidance-management-patients.html). Accessed: 2020-25-05
- 377 6 .Dey, R., Cadigan, N., and Zheng, N. (2019). Estimation of the von bertalanffy growth model when
378 ages are measured with error. *Journal of the Royal Statistical Society: Series C (Applied Statistics)* 68,
379 1131–1147
- 380 7 .[Dataset] Grimm, C. A. (2020). Hospital experiences responding to the covid-19 pandemic: Results of
381 a national pulse survey march 23-27, 2020
- 382 8 .Guan, W.-j., Ni, Z.-y., Hu, Y., Liang, W.-h., Ou, C.-q., He, J.-x., et al. (2020). Clinical characteristics
383 of coronavirus disease 2019 in china. *New England Journal of Medicine* 382, 1708–1720
- 384 9 .Migon, H. S., Gamerman, D., and Louzada, F. (2014). *Statistical inference: an integrated approach*
385 (CRC press)
- 386 10 .[Dataset] Organization, W. H., Organization, W. H., et al. (2020). Report of the who-china joint mission
387 on coronavirus disease 2019 (covid-19)
- 388 11 .Pinheiro, J. and Bates, D. (2006). *Mixed-effects models in S and S-PLUS* (Springer Science & Business
389 Media)
- 390 12 .[Dataset] Ruprecht, T. (2020). Entrevista: por que o número de mortes por coronavírus está
391 subestimado. *Veja Saúde - Abril Mídia S A*. [https://saude.abril.com.br/medicina/
392 entrevista-por-que-o-numero-de-mortes-por-coronavirus-esta-subestimado/
393](https://saude.abril.com.br/medicina/entrevista-por-que-o-numero-de-mortes-por-coronavirus-esta-subestimado/) (Accessed: 2020-27-05)
- 394 13 .Streeck, H., Hartmann, G., Exner, M., and Schmid, M. (2020). Vorläufiges ergebnis und
395 schlussfolgerungen der covid-19 case-cluster-study (gemeinde gangelt). *Preprint published online on* ,
396 04–09

Gonzatto et al. Safety-Stock: Predicting the demand for supplies during the COVID-19 pandemic

- 397 **14** .Tjørve, K. M. and Tjørve, E. (2017). The use of gompertz models in growth analyses, and new
398 gompertz-model approach: An addition to the unified-richards family. *PloS one* 12
- 399 **15** .[Dataset] University, J. H. (2020). Covid-19 dashboard by the center for systems science and
400 engineering (csse) at johns hopkins university (jhu)
- 401 **16** .Wong, C. and Li, W. K. (1998). A note on the corrected akaike information criterion for threshold
402 autoregressive models. *Journal of Time Series Analysis* 19, 113–124
- 403 **17** .Zhou, F., Yu, T., Du, R., Fan, G., Liu, Y., Liu, Z., et al. (2020). Clinical course and risk factors for
404 mortality of adult inpatients with covid-19 in wuhan, china: a retrospective cohort study. *The Lancet*
405 395, 1054 – 1062