

## Mental Health Status of the General Population during the COVID-19 Pandemic: A Cross-Sectional National Survey in Japan

Michiko Ueda<sup>a,\*</sup>, Andrew Stickley<sup>a,b</sup>, Hajime Sueki<sup>c</sup>, Tetsuya Matsubayashi<sup>d</sup>

### Abstract

**Aims:** The ongoing COVID-19 pandemic may have detrimental mental health consequences. However, there is limited understanding of its impact on the mental health of the general population. The aim of this study was to examine the mental health of the Japanese general population by conducting the first systematic survey during the pandemic with a particular focus on identifying the most vulnerable groups. **Methods:** Data was obtained from an online commercial web panel of 2000 respondents in April and May 2020. Information was collected on demographic and socioeconomic factors as well as mental health status (anxiety and depressive symptoms). Logistic regression analysis was used to examine associations.

**Results:** The mental health of young and middle-aged individuals was significantly worse than that of older individuals during the pandemic. There was also some indication that individuals who were not currently working were significantly more likely to report a high level of anxiety and depressive symptoms. Part-time and temporary contract-based workers were also more likely to suffer from depressive symptoms.

**Conclusion:** Our results highlight that monitoring the mental health of younger and economically vulnerable individuals may be especially important. In addition, they also indicate that population mental health might not only be affected by the direct health consequences of COVID-19, but also by the economic ramifications of the pandemic.

1<sup>st</sup> version: April 28, 2020

2<sup>nd</sup> version: May 19, 2020 (typo in Table 1 fixed)

3<sup>rd</sup> version: May 28, 2020 (results from the 2<sup>nd</sup> survey included)

<sup>a</sup> Faculty of Political Science and Economics, Waseda University, Building No.3 1-6-1 Nishiwaseda, Shinjuku-ku, Tokyo 169-8050, Japan

<sup>b</sup> Department of Preventive Intervention for Psychiatric Disorders, National Institute of Mental Health, National Center of Neurology and Psychiatry, 4-1-1 Ogawahigashicho, Kodaira, Tokyo 187-8553, Japan

<sup>c</sup> Department of Psychology and Education, Faculty of Human Sciences, Wako University, 2160 Kanai-machi, Machida, Tokyo, 195-8585, Japan

<sup>d</sup> Osaka School of International Public Policy, Osaka University, 1-31 Machikaneyama, Toyonaka, Osaka, 560-0043, Japan

\* Corresponding author: Michiko Ueda Faculty of Political Science and Economics, Waseda University, Building No.3 1-6-1 Nishiwaseda, Shinjuku-ku, Tokyo 169-8050, Japan [mueda@waseda.jp](mailto:mueda@waseda.jp)  
Tel: +81-3-3208-1176.

**NOTE:** This preprint reports new research that has not been certified by peer review and should not be used to guide clinical practice.

## 1. Introduction

In late December 2019, the novel coronavirus (COVID-19) was detected in the city of Wuhan, China. Within weeks, rapid person-to-person transmission resulted in widespread infection inside Wuhan.<sup>1</sup> National and international travel subsequently facilitated the swift spread of the virus to Europe, North America, Asia, and the Middle East, so much so, that there were more than 118,000 cases in 114 countries when the World Health Organization (WHO) characterized the COVID-19 situation as a pandemic on March 11, 2020.<sup>2,3</sup> The rapid dissemination of the virus has also been accompanied by a large number of deaths in countries across the world, with individuals who are older and who have multiple comorbidities seemingly especially vulnerable to the disease.<sup>4,5</sup>

In the absence of a vaccine, and given the high degree of transmissibility and potential lethality of COVID-19, social and physical distancing, including reducing/avoiding crowding, the closure of non-essential businesses/services, stay-at-home orders, protecting vulnerable groups and local/national movement restrictions, have been the main public health measures adopted to mitigate the transmission/detrimental effects of the virus.<sup>6</sup> Despite the potential benefits of such measures, it is also being increasingly recognized that they might also have both negative short- and long-term consequences for mental health<sup>7</sup> that are in addition to those resulting from the disease itself.<sup>8</sup> For example, a recent review article has shown that quarantine may be associated with a number of negative psychological outcomes, such as anger and posttraumatic stress, with factors such as financial loss and the socioeconomic distress that can result from quarantine possibly underpinning the emergence of psychological disorders.<sup>9</sup>

Several factors suggest that a focus on mental health might be especially important in relation to the ongoing COVID-19 pandemic. First, studies on earlier global infectious disease outbreaks, such as the severe acute respiratory syndrome (SARS) epidemic (2002-2004) and the Middle East respiratory syndrome occurrence (MERS; 2012- ), have indicated that the spread of infectious disease is linked to worse mental health within and across populations.<sup>10,11</sup> Second, recent studies from China have similarly shown that COVID-19 may be important for mental health outcomes such as anxiety, depression, and posttraumatic stress symptoms.<sup>12,13,14</sup> Third, it is possible that COVID-19 may disproportionately affect vulnerable populations,<sup>15</sup> with groups such as older adults, those with co-occurring illnesses, the socially excluded (e.g., the homeless), and individuals with low incomes all being at an increased risk for poorer mental health.<sup>16</sup> Given the lack of evidence, determining who is vulnerable to the mental health consequences of COVID-19 is essential for the design and implementation of evidence-based interventions to mitigate the potential effects of COVID-19 on the population's mental health.

This study will examine the effects of the COVID-19 pandemic on the mental health of a national sample of the Japanese population. The first case of COVID-19 was registered in Japan on January 16,

2020 in the Kanagawa prefecture.<sup>17</sup> Cases continued to grow against a backdrop of increasingly strong public health interventions including the temporary closure of schools and postponement of the forthcoming Olympics in March.<sup>18</sup> A sudden spike in the number of cases led to the declaration of a state of emergency on April 7 in seven major prefectures, including Tokyo.<sup>18</sup> Following an upsurge in ‘untraceable’ new infections, the state of emergency was expanded to cover the whole of Japan, and thirteen prefectures were designated as “special alert areas” on April 16.<sup>19</sup> Although there is no comprehensive data yet, there is some indication that these COVID-19-related events may be having a negative impact on population wellbeing in Japan. For example, the prospect of a possible forthcoming lockdown resulted in panic buying of food and other household products in Tokyo at the end of March<sup>20</sup>, while a recent international poll showed that 86% of the Japanese population were afraid of catching the virus; this was a higher percentage than in other high-income countries such as the United States and United Kingdom where approximately 60% of the population expressed that they were scared of contracting COVID-19.<sup>21</sup> Notably, it is also possible that these events may have had an especially damaging impact on some people’s economic situation as the Japanese government announced in April 2020 that the economy is now ‘rapidly deteriorating’ for the first time since 2009.<sup>22</sup>

Hence, the aim of this study was to extend COVID-19-related mental health research beyond China by determining the mental health status of the Japanese population during the pandemic with a particular focus on identifying the most vulnerable groups. In particular, we hypothesized that older adults may be especially at risk for poorer mental health given the higher COVID-19 mortality rates among those aged 70 and above, as well as economically vulnerable individuals due to the possible economic consequences of the COVID-19 pandemic.

## **2. Methods**

We administered two rounds of an online survey of the Japanese population between April 16 and April 18, 2020 (1<sup>st</sup> round) and May 15 and May 17 (2<sup>nd</sup> round). We utilized a commercial survey company, the Survey Research Center, to send out a set of screening questions to approximately 10,000 respondents from its commercial web panel and then to construct a sample of 1,000 respondents based on their demographic characteristics in each round. A new set of respondents was drawn in the second round. The final sample comprised respondents who were representative of the Japanese general population in terms of the area of their residency, sex, and age distribution. The respondents in the final sample answered online questions about their mental health, personal economic situation, and preventive behavior regarding COVID-19, among others. The final sample size was 2,000.

### *2.1 Ethics statement*

This study was approved by the Ethics Committee of Waseda University (approval case number: 2020-050) and Osaka School of International Public Policy, Osaka University. The survey participants were informed of the purpose of the study prior to their participation and had the option to quit the survey at any time. The respondents provided explicit consent that the information they provided could be used for the purpose of this study. The data are completely anonymous.

## *2.2 Measures of mental health status*

The Patient Health Questionnaire (PHQ-9)<sup>23</sup> was used to measure depressive symptoms. The PHQ-9 is a self-report questionnaire that asks about the nine items in the Major Depressive Disorder module in the Diagnostic and Statistical Manual of Mental Disorders. Based on the recommendation in DSM-5, symptoms over the past week were evaluated. The PHQ-9 was translated into Japanese through back translation. Prior studies confirmed the reliability and validity of the Japanese version of this measure.<sup>24,25</sup> The sensitivity and specificity of the Japanese version of the PHQ-9 were 84% and 95%, respectively.<sup>24</sup> For each item, responses are rated on a 4-point scale from 0 (“Not at all”) to 3 (“Nearly every day”), with higher scores representing increased levels of depression (total score range of 0–27). For the purpose of this study, we treated a score of 10 or above (“moderate”, “moderately severe”, and “severe” cases) as a case of depressive symptomatology.<sup>26</sup> The Cronbach’s alpha value for the scale was 0.90.

The 7-item Generalized Anxiety Disorder Scale (GAD-7)<sup>27</sup> was used to measure anxiety symptoms. The GAD-7 was developed as a self-administered questionnaire for the simple assessment of generalized anxiety disorder. Participants were asked to choose from the following frequency options concerning how often they had been bothered by each of the seven symptoms over the past two weeks: “Not at all”, on “Several days”, on “More than half the days” and “Nearly every day.” The GAD-7 was translated into Japanese through back translation<sup>28</sup> with prior studies confirming the reliability and validity of the Japanese version.<sup>28,29,30</sup> The sensitivity and specificity of the Japanese version of the GAD-7 were 88% and 82%, respectively.<sup>28</sup> For each item, responses are rated on a 4-point scale from 0 to 3, with higher scores representing increased levels of anxiety (total score range 0–21). In the subsequent analysis, we treated a score of 10 or higher (“moderate” and “severe” cases) as a case of anxiety disorder.<sup>31</sup> The scale had a good degree of internal reliability (Cronbach’s alpha = 0.92).

## *2.3 Demographic information*

Information pertaining to basic demographic factors was collected – sex and age. For the age variable, three categories were created; (1) age 18-39 years (young age); (2) age 40-59 years (middle age); (3) 60 years and above (older age). We also included other demographic information on sex and educational attainment, by creating a dummy variable for “male” and “college-educated”. The prefectural area of

residency was captured by a dummy variable that took a value of one for individuals who resided in the prefectures that were designated as “special alert areas” (thirteen and eight prefectures at the time of the 1<sup>st</sup> and 2<sup>nd</sup> survey, respectively). There were more confirmed cases of COVID-19 in the special alert areas.

#### *2.4 Employment status, household income, and household financial situation*

To capture the potentially varying effects of the worsening economy and job prospects, we categorized the respondents’ employment status into five mutually exclusive categories: (1) employed as a permanent employee; (2) employed as a short-term contractor, part-time or dispatch worker; (3) self-employed; (4) currently not working but in the labor force; and (5) not in the labor force. Those in the fourth category were either looking for a job, had been laid off, or were taking time off from work (i.e. they were still economically active). The fifth category included homemakers, students, and retired individuals (who were economically inactive). We used the fifth category as the baseline in the subsequent analysis as these individuals are the least likely to be affected by the economic consequences of the pandemic. Treating students (N=21) separately did not change any of the substantive results reported below.

The respondent’s current financial situation was assessed by asking them how they would rate their household’s current financial situation compared to one year ago. Those who answered, “somewhat worse” or “severely worse” were categorized as being “Financially worse off”. This was included in the analysis as a dummy variable.

The household income level of the respondents was also included in the analysis. This was divided into four categories based on annual household income in 2019: (1) less than 4 million yen; (2) equal to or greater than 4 million yen and less than 8 million yen; (3) equal to or greater than 8 million yen; (4) no information. The last category captured respondents who refused to answer or who did not know their annual household income. As this final category included a large number of respondents (N=354, 17.7%), we created a dummy variable that included these respondents and included it in the analysis in order to maximize statistical power. On April 16, 1 JPY=0.009255 USD.

#### *2.5 Data Analysis*

We first calculated the prevalence of anxiety and depressive symptoms for each of the demographic and economic groups. Then logistic regression models were estimated with either the GAD-7 or PHQ-9 categories as the outcome and all the respondents’ characteristics as the regressors. In each fully adjusted model, we included the respondent’s sex (reference category: female), educational attainment (reference: not college-educated), income level (four categories, reference: 8 million yen and higher),

household financial situation (reference: economically not worse off), employment status and type of employment (five categories, reference: not in the labor force), the area of residency (reference: not in the special alert area), and the study period (reference: April 2020). The results are depicted graphically as odds ratios (OR), with the horizontal bars representing 95% confidence intervals (CI). The standard errors were heteroskedasticity-robust, and clustered by prefecture. The analysis was conducted using STATA/MP (version 16, Stata Corporation, College Station, TX). The level of statistical significance was set at  $p < 0.05$  (two-tailed).

### 3. Results

Descriptive statistics of the sample characteristics stratified by the mental health variables are presented in Table 1. Just under half of the respondents were male (49.6%). Almost half (44.7%) of the participants were college-educated, 37.1% were permanent employees, 10.7% were part-time or temporary workers, while 6.9% were not in employment but in the labor force. Fifty-eight percent of the respondents resided in one of the “special alert areas”.

#### 3.1 PHQ-9

Among the 2,000 respondents, 17.3% were at or above the cutoff point of 10 for the PHQ-9, indicating the presence of depressive symptoms. The overall mean score on the PHQ-9 was 5.25 (S.D. = 5.62). Based on their PHQ-9 scores, 56.8% of individuals were categorized as having “no” depressive symptoms (PHQ-9 score: 0-4), 25.9% had “mild” symptoms (5-9), 9.5% had “moderate” symptoms (10-14), 5.0% had “moderately severe” symptoms (15-19), while 2.9% had “severe” symptoms (20-27).

[Table 1]

#### 3.2 GAD-7

As for general anxiety disorder, 218/2000 (10.9%) individuals had a GAD-7 score  $\geq 10$ . The mean score was 3.73 (S.D. = 4.61). In terms of symptomatology, 68.4% individuals had “none” (GAD-7 score: 0-4), while 20.8% had “mild” (5-9), 6.8% had “moderate” (10-14), and 4.2% had “severe” (15-21) anxiety symptoms.

#### 3.3 Logistic Regression analysis

In fully-adjusted models, the odds for at least moderate depressive symptoms were 4.127 (95% CI: 2.683 – 6.348) and 3.385 (95% CI: 2.218 – 5.165) times higher for young and middle-aged respondents, respectively, compared to older respondents (Figure 1). Young (OR: 3.850, 95% CI: 2.542 – 5.831) and middle-aged adults (OR: 3.784, 95% CI: 2.434 – 5.883) also had significantly higher odds for reporting anxiety symptoms compared to their older counterparts (Figure 2).

Those who were unemployed, had been laid off, or who were taking time off work were 1.764 (95% CI: 1.143 – 2.722) times more likely to have moderate or severe forms of depression compared to those who were not in the labor force, such as retirees and housekeepers. They also had 2.474 (95% CI: 1.561 – 3.922) times higher odds for anxiety symptoms. Individuals with an unstable job (i.e. part-time/temporary workers) had a higher risk of depressive (OR: 1.506, 95% CI: 1.030 – 2.202) and anxiety symptoms (OR: 1.497, 95% CI: 0.986 – 2.270). The odds ratios for permanent workers to experience depression were higher but not statistically different from those not in the labor force.

Respondents who felt that they were financially worse-off compared to a year ago had 2.527 (95% CI: 2.000 – 3.194) and 2.492 (95% CI: 1.855 – 3.348) times higher odds for depressive and anxiety symptoms, respectively, compared to those whose financial situation had not deteriorated. Similarly, the adjusted odds ratio for depressive symptoms for low income individuals was 1.820 (95%: 1.051 – 3.151). Differences in respondents' sex, and area of residency (whether or not they lived in a special alert area) were not associated with either the prevalence of anxiety or depressive symptoms. Finally, there was no statistically significant difference in the mental health status of respondents between April and May 2020 either in terms of anxiety or depressive symptoms.

[Figure 1 and Figure 2]

#### 4. Discussion

This study examined the mental health status of the general population in Japan using information from an online survey of 2000 individuals collected in April and May 2020 that approximated the demographic characteristics of the whole population. To the best of our knowledge, this study constitutes the first investigation of the prevalence of anxiety and depressive symptoms in Japan during the COVID-19 pandemic using a representative sample in terms of age, sex, and regional distribution.

Results indicated that the overall mental health condition of people in Japan may have deteriorated compared to the pre-COVID-19 period. Specifically<sup>32</sup>, as of 2013, 8% of the general

population in Japan (N= 3,753) had a PHQ-9 score of 10 or higher. This compares to 17.3% of respondents in the current study. It should be noted that the number of confirmed cases and deaths from COVID-19 is still relatively low in Japan at the time of writing this manuscript, compared to other affected countries; as of April 27, 2020, there were 360 deaths attributed to COVID-19, which corresponds to 2.8 per one million persons. For comparison, the number of confirmed deaths per one million population in the United States was 164.3.<sup>33</sup>

The findings of our study suggest that the mental health condition of some segments of the Japanese population may be particularly vulnerable during the ongoing COVID-19 crisis. In particular, individuals who were not currently working were more likely to report a high level of anxiety and depressive symptoms. Our results also indicate that the form of employment might also be important for mental health; individuals who are employed as part-time or temporary contract-based workers were more likely to suffer from depressive symptoms compared to the reference group. The finding that non-/precarious employment may be linked to poorer mental health accords with the finding of a recent study of 369 adults in 64 cities in China where stopping work during the COVID-19 crisis was associated with worse mental health.<sup>34</sup>

These results are consistent with the notion that the effects of a faltering economy and reduction in business activities caused by COVID-19 are first and foremost likely to detrimentally affect workers without stable employment. When various non-essential businesses were closed following the declaration of a state of emergency, many part-time workers immediately lost their source of income. Moreover, for those who were seeking employment, their prospects of finding a job have now greatly diminished as the number of job listings has declined.<sup>22</sup> Thus, it is possible that the socioeconomic stresses and strains that are emerging as a result of the ongoing pandemic might have had an especially hard impact on these precarious workers and jobseekers in terms of poorer mental health.

Similarly, individuals who felt that their financial position deteriorated in the past year had greater odds for depression and anxiety disorder. As we controlled for the effect of income level on mental health in the analyses, it suggests that these results cannot be entirely explained by the differences in income levels. Although it is uncertain what underlies this specific finding, taken together with the results relating to employment status, it suggests that individuals who are economically vulnerable might be especially susceptible to experiencing poorer mental health during the COVID-19 pandemic, especially if the economic effects of the crisis are protracted.

It is important to note however, that the mental health condition of other employment status groups may have also deteriorated compared to the pre-COVID-19 period. Specifically, earlier research undertaken in Japan in 2013, showed that 5.84% of full-time workers in the general population could be classified as being depressed based on a PHQ9 cutoff score  $\geq 10$ .<sup>32</sup> In contrast, 18.9% of permanent employees in our study met the same criterion (Table 1). In addition, the prevalence of depression among homemakers, retirees, and students (the reference group in our study) was reported to be 8.25% in 2013 whereas 13.7% reported depressive symptoms in the current study. Thus, there was a 13.06



point difference for full-time workers and a 5.45 point difference for those not in the labor force. This suggests that the mental health conditions of all workers (both economically active and inactive) should be closely monitored during and following the current crisis as the negative economic shocks associated with COVID-19 might affect all employment status categories.

Contrary to our hypothesis, we found strong evidence that the mental health of young and middle-aged individuals may be significantly worse than that of older individuals during the pandemic. To date, studies from China have produced mixed findings concerning the mental health of different age groups during the COVID-19 crisis.<sup>14,35,36</sup> It is not immediately obvious as to why the mental health of the elderly population is significantly better than that of younger individuals. Similar to elsewhere in the world, they are by far the highest-risk group for death and complications by COVID-19. For example, out of 348 deaths due to COVID-19 in Japan as of April 26, 2020, 228 (66%) were among persons aged 60 and above.<sup>37</sup> In addition, in the abovementioned Japanese study from 2013,<sup>32</sup> the elderly population (aged  $\geq 65$ ) had a higher prevalence of depression compared to those who were young and middle-aged.

Although more work needs to be done to understand the impact of COVID-19 on different age groups, it can be speculated that the crisis might be presenting a much greater range of difficulties for the working-age population, rather than older age groups. For example, besides financial worries, it is also possible that COVID-19 may be currently giving rise to other stressors in younger age groups that might also impact their mental health – such as the need for parents to both telework from home while at the same time homeschool their children. Support for this notion of a greater number/different range of stressors in younger age groups comes from a recent study from China which linked worse mental health in those aged 12-21 years with education difficulties arising from both school closures and exam uncertainties.<sup>14</sup> Alternatively, it is possible that other factors might be important in this context. An earlier study found, for example, that older adults were more psychologically resilient than their younger counterparts<sup>38</sup> which might be important when it comes to dealing with the sources of stress associated with the COVID-19 pandemic.

This study has several strengths. It is the first systematic study to examine the mental health status of the general population in Japan during the COVID-19 pandemic. While doing this, we were able to draw on data from a large population-based sample. Moreover, we were also able to examine different mental health outcomes. Despite this, our study also has several limitations that should be mentioned. First, our survey was undertaken among respondents from a commercial web panel, and thus did not guarantee that the sample would be perfectly representative of the entire population. Although being able to conduct the survey while using random sampling methodology would have been preferable, it was not appropriate in this particular instance as it would not have allowed us to collect data in a timely manner – which was essential given the urgent need to understand how COVID-19 is affecting population well-being. Second, our study is cross-sectional, and thus cannot establish a causal relationship between the pandemic and mental health conditions. In particular, those who are in an

economically weak position are likely to be vulnerable to poorer mental health even during non-crisis times<sup>39</sup>, and our study could not prove that their mental health was poorer because of any major economic upheaval associated with COVID-19. However, the main purpose of this study was not to establish causality; its focus was rather on identifying the most vulnerable groups during the initial stage of the pandemic in Japan by undertaking the first systematic research on the mental health of the Japanese population during this period. We are planning to conduct a series of similar surveys in the following months that should further elucidate the effects of COVID-19 on the population's mental health. Third, our analysis did not consider the potential effects of marital status which might have been important for mental health.

Despite these limitations, our study contributes to the literature by identifying the most vulnerable population groups during the COVID-19 crisis through the first systematic survey of the mental health of the Japanese general population. Our results highlight that monitoring the mental health of younger and economically vulnerable individuals may be especially important moving forward. In addition, they also indicate that the general public's mental health during the pandemic might not only be affected by the direct health consequences of COVID-19, but also by the economic ramifications of the pandemic.

The results of the present study also have important policy implications. Given the potentially devastating impact of the pandemic on the economy, not just in Japan, but worldwide, policymakers should provide financial aid to those affected by the economic consequences of the pandemic. In connection with this, the Japanese government had initially planned to distribute a cash benefit of 300,000 yen to each household provided that the head of the household had lost a significant portion of their income, but then changed the planned policy in mid-April so that all residents in Japan would receive 100,000 yen per person.<sup>40</sup> While funds are expected to reach residents faster under the current universal policy, many small-sized households that have been economically affected will receive less money than they would have under the previous policy. This suggests that the government should employ both universal and targeted policies so that the needs of the most economically vulnerable are met during this unprecedented crisis.

Table 1 Descriptive statistics and the prevalence of depressive and anxiety symptoms

		<b>% in the sample</b>	<b>% PHQ-9<math>\geq</math>10</b>	<b>% GAD-7<math>\geq</math>10</b>
All			17.3	10.9
Age	Young (age 18-39 yrs)	30.2	23.8	14.2
	Middle (age 40-59 yrs)	36.1	20.8	14.1
	Older (age 60 yrs and above)	33.7	7.9	4.5
Sex	Female	50.4	17.4	10.2
	Male	49.6	17.3	11.6
Education	Without college degree	55.4	18.3	11.1
	With college degree	44.7	16.1	10.6
Income	<4 million yen	32.5	22.5	13.4
	$\geq$ 4 and <8 million yen	33.6	15.6	9.4
	8 million yen or higher	16.2	13.3	9.3
	No information	17.7	15.0	10.7
Household Finance	Unchanged or better off	79.1	13.9	8.4
	Worse off	21.0	30.3	20.3
Employment	Permanent Employee	37.1	18.9	11.7
	Part-time, temporary worker	10.7	20.6	12.6
	Self-employed	4.3	9.3	4.7
	Unemployed, laid off, or on leave	6.9	31.2	25.4
	Not in the labor force	41.0	13.7	7.9
Area of Residence	Outside special alert area	42.0	17.4	11.0
	In special alert area	58.0	17.3	10.9

Note:  $n=2,000$ . PHQ: the 9-item Patient Health Questionnaire, GAD-7: the 7-item Generalized Anxiety Disorder Scale.

## **Acknowledgements**

This work was financially supported by JSPS Grants-in-Aid for Scientific Research Grant Number 20H01584. The funders had no role in study design, data collection and analysis, decision to publish, or preparation of the manuscript.

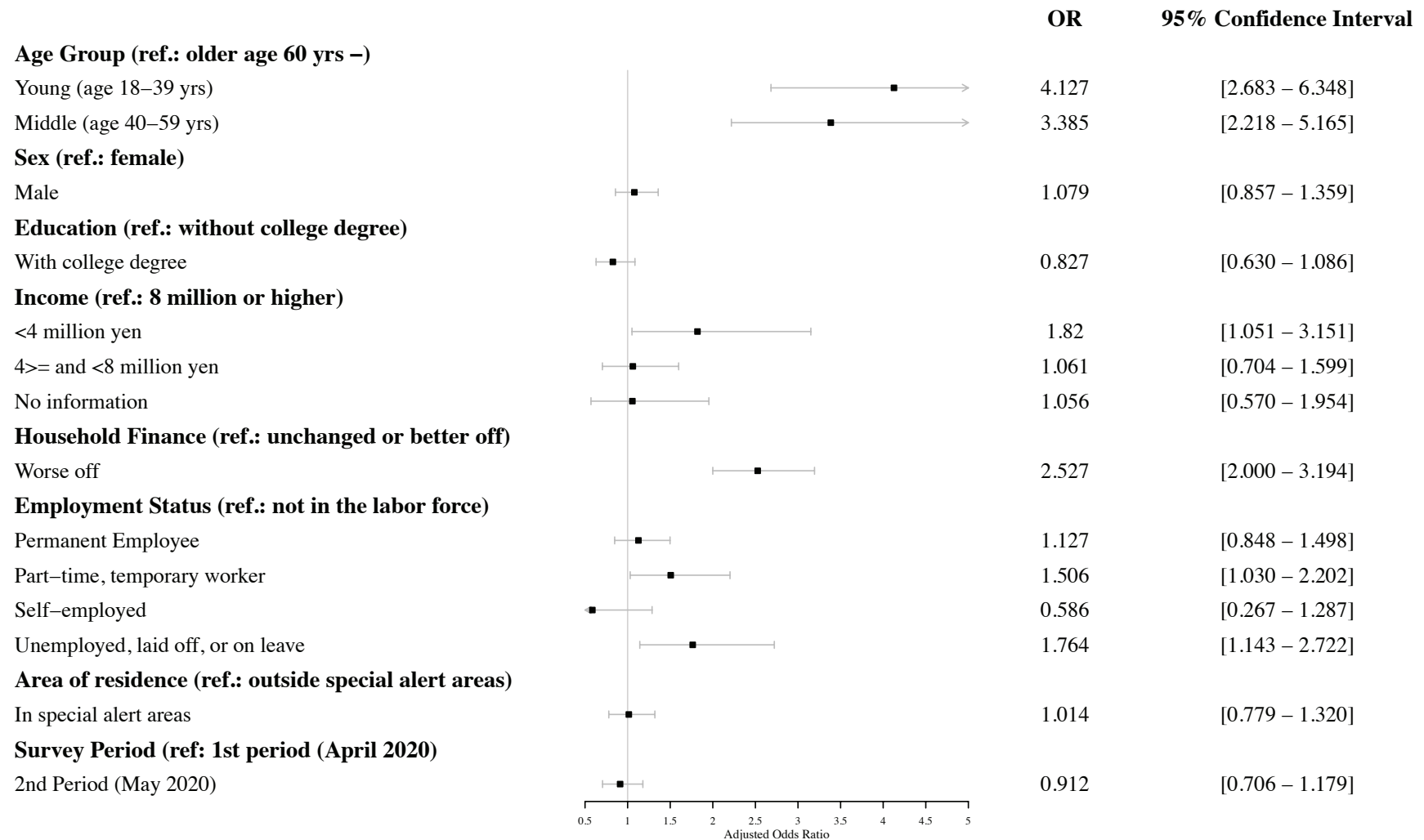
## References

1. Heymann, D.L., Shindo, N. & WHO Scientific and Technical Advisory Group for Infectious Hazards 2020. COVID-19: what is next for public health? *Lancet*, 395 (10224) 542-545.
2. Bedford, J., Enria, D., Giesecke, J. *et al.* 2020. COVID-19: towards controlling of a pandemic, *Lancet*, 395 (10229), 1015-1018.
3. World Health Organization (WHO). 2020b. WHO Director-General's opening remarks at the media briefing on COVID- 19 - 11 March 2020. <https://www.who.int/dg/speeches/detail/who-director-general-s-opening-remarks-at-the-media-briefing-on-covid-19---11-march-2020> (Accessed April 25, 2020)
4. Onder, G., Rezza, G. & Brusaferro, S. 2020. Case-fatality rate and characteristics of patients dying in relation to COVID-19 in Italy. *JAMA*. DOI:10.1001/jama.2020.4683
5. Ruan, Q., Yang, K., Wang, W., Jiang, L. & Song, J. 2020. Clinical predictors of mortality due to COVID-19 based on an analysis of data of 150 patients from Wuhan, China. *Intensive Care Med.* DOI: 10.1007/s00134-020-05991-x
6. World Health Organization (WHO). 2020a. Coronavirus disease 2019 (COVID-19) Situation Report - 72. [https://www.who.int/docs/default-source/coronaviruse/situation-reports/20200401-sitrep-72-covid-19.pdf?sfvrsn=3dd8971b\\_2](https://www.who.int/docs/default-source/coronaviruse/situation-reports/20200401-sitrep-72-covid-19.pdf?sfvrsn=3dd8971b_2) (Accessed April 25, 2020)
7. Galea, S., Merchant, R.M., Lurie, N. & Galea, S. 2020. The mental health consequences of COVID-19 and physical distancing: the need for prevention and early intervention. *JAMA Intern Med.* DOI:10.1001/jamainternmed.2020.1562
8. Du, J., Dong, L., Wang, T. *et al.* 2020. Psychological symptoms among frontline healthcare workers during COVID-19 outbreak in Wuhan. *General hospital psychiatry*. DOI: 10.1016/j.genhospsych.2020.03.011
9. Brooks, S.K., Webster, R.K., Smith, L.E. *et al.* 2020. The psychological impact of quarantine and how to reduce it: rapid review of the evidence. *Lancet*, 395 (10227), 912-920.
10. Jeong, H., Yim, H.W., Song, Y. *et al.* 2016. Mental health status of people isolated due to Middle East Respiratory Syndrome. *Epidemiol Health*, 38, e2016048.
11. Lau, J.T.F., Yang, X., Pang, E., Tsui, H.Y., Wong, E. & Wing, Y.K. 2005. SARS-related perceptions in Hong Kong. *Emerg Infect Dis*, 11 (3), 417.
12. Ahmed, M.Z., Ahmed, O., Aibao, Z., Hanbin, S., Siyu, L. & Ahmad, A. 2020. Epidemic of COVID-19 in China and associated Psychological Problems. *Asian J Psychiatr*, 51, 102092.
13. Cao, W., Fang, Z., Hou, G. *et al* 2020. The psychological impact of the COVID-19 epidemic on college students in China. *Psychiatry Res*, 287.
14. Wang, C., Pan, R., Wan, X *et al.* 2020. A longitudinal study on the mental health of general population during the COVID-19 epidemic in China. *Brain Behav Immun*, S0889-1591(20) 30511-0.
15. Wang, Z. & Tang, K. 2020. Combating COVID-19: health equity matters. *Nat Med*, 26 (4), 458-458.
16. Holmes, E.A., O'Connor, R.C., Perry, V.H. *et al.* 2020. Multidisciplinary research priorities for the COVID-19 pandemic: a call for action for mental health science. *Lancet Psychiatry*. DOI: 10.1016/S2215-0366(20)30168-1
17. Ministry of Health, Labor and Welfare (MHLW). 2020a. On the first case related to the novel Coronavirus [Shingata corona-uirusu ni kanren shita hai-en no kan-ja no hassei ni tsuite (1-rei me)]. January 16 2020. [https://www.mhlw.go.jp/stf/newpage\\_08906.html](https://www.mhlw.go.jp/stf/newpage_08906.html) (accessed April 27, 2020)
18. Looi, M. 2020a. COVID-19: Japan declares state of emergency as Tokyo cases soar. *BMJ*, 369, m1447.
19. Looi, M. 2020b, COVID-19: Japan prepares to extend state of emergency nationwide as "untraceable" cases soar. *BMJ*, 369, m1543.
20. Reuters., 2020, Panic-buying in Tokyo as residents asked to hunker down for weekend. Reuters, 27 March: <https://www.reuters.com/article/health-coronavirus->

- japan/panic-buying-in-tokyo-as-residents-asked-to-hunker-down-for-weekend-idUSL4N2BK07X (accessed April 15, 2020)
21. YouGov. 2020. YouGov international COVID-19 tracker. <https://today.yougov.com/topics/international/articles-reports/2020/03/17/YouGov-international-COVID-19-tracker> (accessed April 27, 2020)
  22. Japanese Cabinet Office. 2020. Monthly economic report [Getsurei Keizai Houkoku]. April 2020.
  23. Spitzer, R.L., Kroenke, K., Williams, J.B.W. & the Patient Health Questionnaire Primary Care Study Group. 1999. Validation and utility of a self-report version of PRIME-MD: The PHQ Primary Care Study. *JAMA*, 282 (18) 1737-1744.
  24. Muramatsu, K., Kamijima, K., Yoshida, M. *et al.* 2007. The patient health questionnaire, Japanese version: validity according to the mini-international neuropsychiatric interview-plus. *Psychological reports*, 101 (3) 952-960.
  25. Inagaki, M., Ohtsuki, T., Yonemoto, N. *et al.* 2013. Validity of the Patient Health Questionnaire (PHQ)-9 and PHQ-2 in general internal medicine primary care at a Japanese rural hospital: a cross-sectional study, *General hospital psychiatry*. 35 (6).
  26. Levis, B., Benedetti, A., Thombs, B.D., *et al.* 2019. Accuracy of Patient Health Questionnaire-9 (PHQ-9) for screening to detect major depression: individual participant data meta-analysis. *BMJ*, 365.
  27. Spitzer, R.L., Kroenke, K., Williams, J.B.W. & Löwe, B. 2006. A brief measure for assessing Generalized Anxiety Disorder: The GAD-7. *Archives of Internal Medicine*, 166 (10) 1092-1097.
  28. Muramatsu, K., Muramatsu, Y., Miyaoka, H. *et al.* 2009. Validation and utility of a Japanese version of the GAD-7. PANMINERVA MEDICA 20th World Congress on Psychosomatic Medicine Abstracts Book (Vol. 51, No. Suppl 1 to No 3, p. 79).
  29. Doi, S., Ito, M., Takebayashi, Y., Muramatsu, K. & Horikoshi, M. 2018. Factorial validity and invariance of the 7-item Generalized Anxiety Disorder Scale (GAD-7) Among Populations with and Without Self-Reported Psychiatric Diagnostic Status. *Frontiers in Psychology*, 9. 1741.
  30. Ohtsuki, T., Inagaki, M., Oikawa, Y. *et al.* 2010. Multiple barriers against successful care provision for depressed patients in general internal medicine in a Japanese rural hospital: a cross-sectional study. *BMC Psychiatry*, 10 (1), 30.
  31. Löwe, Y., Bernd, Decker, Y., Oliver, Müller, Y. *et al.* 2008. Validation and Standardization of the Generalized Anxiety Disorder Screener (GAD-7) in the General Population, *Medical care*, 46 (3), 266-274.
  32. Hoshino, E., Ohde, S., Rahman, M., Takahashi, O., Fukui, T. & Deshpande, G.A. 2018. Variation in somatic symptoms by patient health questionnaire-9 depression scores in a representative Japanese sample. *BMC Public Health*, 18, 1.
  33. John Hopkins University and Hospital. 2020. Coronavirus: Mortality Analyses. <https://coronavirus.jhu.edu/data/mortality> (accessed April 27th, 2020)
  34. Zhang, S.X., Wang, Y., Rauch, A. & Wei, F. 2020. Unprecedented disruption of lives and work: Health, distress and life satisfaction of working adults in China one month into the COVID-19 outbreak. *Psychiatry Res*, 288, 112958.
  35. Huang, Y. & Zhao, N. 2020. Mental health burden for the public affected by the COVID-19 outbreak in China: Who will be the high-risk group? *Psychol Health Med*, 1-12.
  36. Tian, F., Li, H., Tian, S., Yang, J., Shao, J. & Tian, C. 2020. Psychological symptoms of ordinary Chinese citizens based on SCL-90 during the level I emergency response to COVID-19. *Psychiatry Res*, 288, 112992.
  37. Ministry of Health, Labor and Welfare (MHLW). 2020b. The current status on the novel Coronavirus (as of April 26, 2020) [Shin-gata corona-uirusu kansen-shou no genzai no joukyou ni tsuite (reiwa 2-nen 4-gatsu 26-nichiban)]. April 26 2020. [https://www.mhlw.go.jp/stf/newpage\\_11048.html](https://www.mhlw.go.jp/stf/newpage_11048.html) (accessed April 27, 2020)
  38. Gooding, P.A., Hurst, A., Johnson, J. & Tarrrier, N. 2012. Psychological resilience in young and older adults, *International journal of geriatric psychiatry*, 27 (3), 262-270.

39. Suzuki, M., Furihata, R., Konno, C., Kaneita, Y., Ohida, T. & Uchiyama, M. 2018. Stressful events and coping strategies associated with symptoms of depression: A Japanese general population survey. *J Affect Disord*, 238, 482-488.
40. Kyodo News. 2020. Japan gov't submits extra budget for virus rescue package. <https://english.kyodonews.net/news/2020/04/d5dc370949db-japan-govt-submits-extra-budget-for-virus-rescue-package.html> (accessed 27th April 2020)

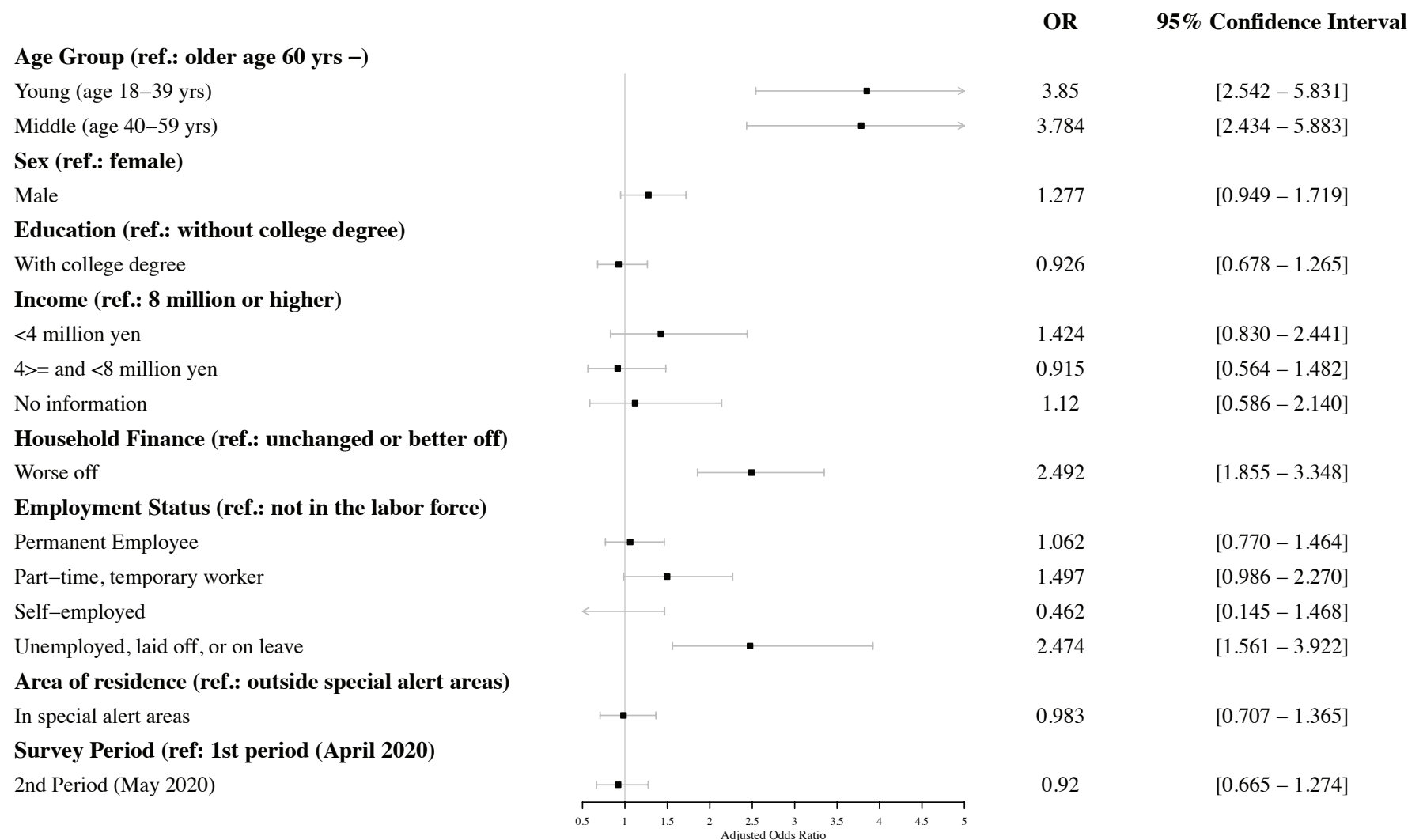
**Figure 1 Logistic Regression Results for the Prevalence of Depression Symptoms (PHQ-9 $\geq$ 10)**



Notes:  $n=2,000$ . PHQ-9: the 9-item Patient Health Questionnaire. The outcome is a dummy variable for at least moderate form of depression (cutoff: PHQ-9 score of 10 or higher). Adjusted odds ratios and 95% confidence intervals from multivariate logistic regression with all covariates reported.



**Figure 2 Logistic Regression Results for the Prevalence of Anxiety Symptoms (GAD-7 $\geq$ 10)**



Notes:  $n=2,000$ . GAD-7: the 7-item Generalized Anxiety Disorder Scale. The outcome is a dummy variable for at least moderate form of anxiety symptoms (cutoff: GAD-7 score of 10 or higher). Adjusted odds ratios and 95% confidence intervals from multivariate logistic regression with all covariates reported.

**Supplementary Table 1: PHQ-9 Scores by Subgroup**

		count	mean	std	min	25%	50%	75%	max
All	All	2000	5.250	5.616	0	1	4	8	27
Age groups (3 groups)	Young (age 18-39 yrs)	604	6.364	6.172	0	1	5	9	27
	Middle (age 40-59 yrs)	722	5.852	5.930	0	1	4	9	27
	Older (age 60 yrs -)	674	3.607	4.204	0	0	2	5	27
Age groups (6 groups)	18-29 yrs	304	6.885	6.302	0	2	5	10	27
	30-39 yrs	300	5.837	6.001	0	1	4	9	27
	40-49 yrs	380	6.321	6.222	0	1	5	9	27
	50-59 yrs	342	5.330	5.550	0	1	4	8	27
	60-69 yrs	354	4.020	4.773	0	0	3	6	27
	70 yrs-	320	3.150	3.417	0	0	2	5	18
Sex	Female	1008	5.288	5.441	0	1	4	8	27
	Male	992	5.212	5.791	0	1	3	8	27
Education	Without college degree	1107	5.353	5.757	0	1	4	8	27
	With college degree	893	5.122	5.437	0	1	4	8	27
Household income	<4 million yen	650	6.165	6.157	0	1	4	9	27
	4>= and <8 million yen	672	4.714	5.049	0	1	3	7	27
	8 million or higher	324	4.676	5.216	0	1	3	7	27
	No information	354	5.113	5.757	0	1	3	7	27
Household Finance	Unchanged or better off	1581	4.672	5.205	0	1	3	7	27
	Worse off	419	7.432	6.511	0	2	6	11	27
Employment Status	Permanent Employee	742	5.453	5.670	0	1	4	8	27
	Part-time, temporary worker	214	5.374	5.184	0	1	5	9	26
	Self-employed	86	3.814	4.677	0	0	3	5	27
	Unemployed, laid off, or on leave	138	8.058	7.333	0	2	6	11.75	27
	Not in the labor force	820	4.712	5.269	0	1	3	7	27
Area of residence	Outside special alert areas	840	5.269	5.716	0	1	4	8	27
	In special alert areas	1160	5.236	5.545	0	1	4	8	27

Note: PHQ-9 is the 9-item Patient Health Questionnaire (range 0-27).

**Supplementary Table 2: GAD-7 Scores by Subgroup**

		count	mean	std	min	25%	50%	75%	max
All	All	2000	3.729	4.611	0	0	2	6	21
Age groups (3 groups)	Young (age 18-39 yrs)	604	4.483	5.106	0	0	3	7	21
	Middle (age 40-59 yrs)	722	4.251	4.870	0	0	3	7	21
	Older (age 60 yrs -)	674	2.493	3.470	0	0	1	4	21
Age groups (6 groups)	18-29 yrs	304	4.618	5.222	0	0	3	7	21
	30-39 yrs	300	4.347	4.990	0	0	3	6	21
	40-49 yrs	380	4.597	5.077	0	0	3	7	21
	50-59 yrs	342	3.865	4.606	0	0	2	6	21
	60-69 yrs	354	2.797	3.737	0	0	1	4	21
	70 yrs-	320	2.156	3.120	0	0	1	3	19
Sex	Female	1008	3.760	4.433	0	0	2	6	21
	Male	992	3.697	4.786	0	0	2	6	21
Education	Without college degree	1107	3.805	4.698	0	0	2	6	21
	With college degree	893	3.634	4.501	0	0	2	5	21
Household income	<4 million yen	650	4.178	4.923	0	0	3	6	21
	4>= and <8 million yen	672	3.427	4.209	0	0	2	5	21
	8 million or higher	324	3.429	4.364	0	0	2	5	21
	No information	354	3.749	4.909	0	0	2	6	21
Household Finance	Unchanged or better off	1581	3.220	4.240	0	0	2	5	21
	Worse off	419	5.647	5.388	0	1	4	9	21
Employment Status	Permanent Employee	742	3.868	4.618	0	0	2	6	21
	Part-time, temporary worker	214	3.682	4.686	0	0	2	6	21
	Self-employed	86	2.442	2.868	0	0	1	4	10
	Unemployed, laid off, or on leave	138	5.920	5.971	0	1	4	9.75	21
	Not in the labor force	820	3.380	4.352	0	0	2	5	21
Area of residence	Outside special alert areas	840	3.762	4.728	0	0	2	6	21
	In special alert areas	1160	3.704	4.525	0	0	2	6	21

Note: GAD-7 is the 7-item Generalized Anxiety Disorder Scale (range 0-21).

**Supplementary Table 3: PHQ-9 Categories by Subgroup**

		n						%				
		count	none	mild	moderate	moderately severe	severe	none	mild	moderate	moderately severe	severe
All	All	2000	1136	517	190	99	58	56.8	25.9	9.5	5.0	2.9
Age groups (3 groups)	Young (age 18-39 yrs)	604	300	160	73	43	28	49.7	26.5	12.1	7.1	4.6
	Middle (age 40-59 yrs)	722	374	198	81	44	25	51.8	27.4	11.2	6.1	3.5
	Older (age 60 yrs -)	674	462	159	36	12	5	68.5	23.6	5.3	1.8	0.7
Age groups (6 groups)	18-29 yrs	304	137	89	40	20	18	45.1	29.3	13.2	6.6	5.9
	30-39 yrs	300	163	71	33	23	10	54.3	23.7	11.0	7.7	3.3
	40-49 yrs	380	185	102	51	26	16	48.7	26.8	13.4	6.8	4.2
	50-59 yrs	342	189	96	30	18	9	55.3	28.1	8.8	5.3	2.6
	60-69 yrs	354	229	86	28	6	5	64.7	24.3	7.9	1.7	1.4
	70 yrs-	320	233	73	8	6	0	72.8	22.8	2.5	1.9	0.0
Sex	Female	1008	565	268	99	50	26	56.1	26.6	9.8	5.0	2.6
	Male	992	571	249	91	49	32	57.6	25.1	9.2	4.9	3.2
Education	Without college degree	1107	627	277	113	53	37	56.6	25.0	10.2	4.8	3.3
	With college degree	893	509	240	77	46	21	57.0	26.9	8.6	5.2	2.4
Household income	<4 million yen	650	333	171	79	39	28	51.2	26.3	12.2	6.0	4.3
	4>= and <8 million yen	672	409	158	65	29	11	60.9	23.5	9.7	4.3	1.6
	8 million or higher	324	191	90	20	17	6	59.0	27.8	6.2	5.2	1.9
	No information	354	203	98	26	14	13	57.3	27.7	7.3	4.0	3.7
Household Finance	Unchanged or better off	1581	962	399	126	61	33	60.8	25.2	8.0	3.9	2.1
	Worse off	419	174	118	64	38	25	41.5	28.2	15.3	9.1	6.0
Employment Status	Permanent Employee	742	415	187	73	49	18	55.9	25.2	9.8	6.6	2.4
	Part-time, temporary worker	214	106	64	31	11	2	49.5	29.9	14.5	5.1	0.9
	Self-employed	86	60	18	6	0	2	69.8	20.9	7.0	0.0	2.3
	Unemployed, laid off, or on leave	138	56	39	17	11	15	40.6	28.3	12.3	8.0	10.9
	Not in the labor force	820	499	209	63	28	21	60.9	25.5	7.7	3.4	2.6
Area of residence	Outside special alert areas	840	474	220	79	38	29	56.4	26.2	9.4	4.5	3.5
	In special alert areas	1160	662	297	111	61	29	57.1	25.6	9.6	5.3	2.5

Note: "none" refers to PHQ-9 score of 0-4; "mild": 5-9; "moderate": 10-14; "moderately severe": 15-19; "severe": 20-27.

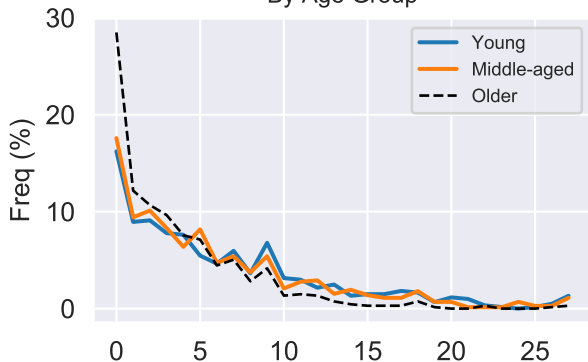
**Supplementary Table 4: GAD-7 Categories by Subgroup**

		count	n				%			
			none	mild	moderate	severe	none	mild	moderate	severe
All	All	2000	1367	415	135	83	68.4	20.8	6.8	4.2
Age groups (3 groups)	Young (age 18-39 yrs)	604	376	142	49	37	62.3	23.5	8.1	6.1
	Middle (age 40-59 yrs)	722	462	158	63	39	64.0	21.9	8.7	5.4
	Older (age 60 yrs -)	674	529	115	23	7	78.5	17.1	3.4	1.0
Age groups (6 groups)	18-29 yrs	304	190	67	28	19	62.5	22.0	9.2	6.3
	30-39 yrs	300	186	75	21	18	62.0	25.0	7.0	6.0
	40-49 yrs	380	232	86	38	24	61.1	22.6	10.0	6.3
	50-59 yrs	342	230	72	25	15	67.3	21.1	7.3	4.4
	60-69 yrs	354	270	64	15	5	76.3	18.1	4.2	1.4
	70 yrs-	320	259	51	8	2	80.9	15.9	2.5	0.6
Sex	Female	1008	683	222	66	37	67.8	22.0	6.5	3.7
	Male	992	684	193	69	46	69.0	19.5	7.0	4.6
Education	Without college degree	1107	741	243	73	50	66.9	22.0	6.6	4.5
	With college degree	893	626	172	62	33	70.1	19.3	6.9	3.7
Household income	<4 million yen	650	414	149	54	33	63.7	22.9	8.3	5.1
	4>= and <8 million yen	672	473	136	42	21	70.4	20.2	6.3	3.1
	8 million or higher	324	231	63	20	10	71.3	19.4	6.2	3.1
Household Finance	No information	354	249	67	19	19	70.3	18.9	5.4	5.4
	Unchanged or better off	1581	1148	300	86	47	72.6	19.0	5.4	3.0
Employment Status	Worse off	419	219	115	49	36	52.3	27.4	11.7	8.6
	Permanent Employee	742	496	159	59	28	66.8	21.4	8.0	3.8
	Part-time, temporary worker	214	148	39	19	8	69.2	18.2	8.9	3.7
	Self-employed	86	67	15	4	0	77.9	17.4	4.7	0.0
	Unemployed, laid off, or on leave	138	74	29	20	15	53.6	21.0	14.5	10.9
Area of residence	Not in the labor force	820	582	173	33	32	71.0	21.1	4.0	3.9
	Outside special alert areas	840	574	174	50	42	68.3	20.7	6.0	5.0
	In special alert areas	1160	793	241	85	41	68.4	20.8	7.3	3.5

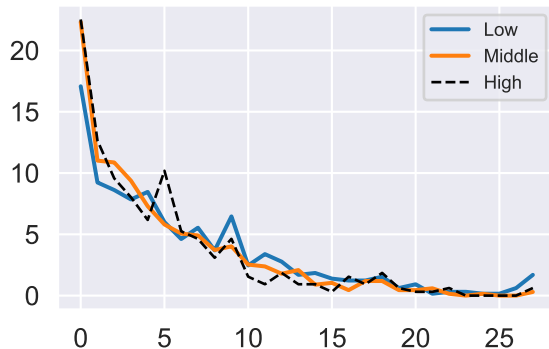
Note: "none" refers to GAD-7 score of 0-4; "mild": 5-9; "moderate": 10-14; "severe": 15-21.

# Supplementary Figure 1: PHQ-9 Raw Scores by Selected Subgroup

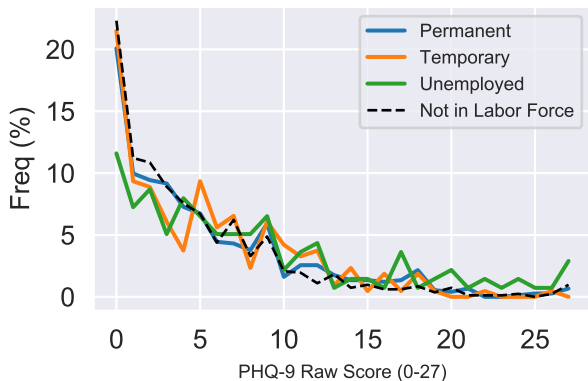
## By Age Group



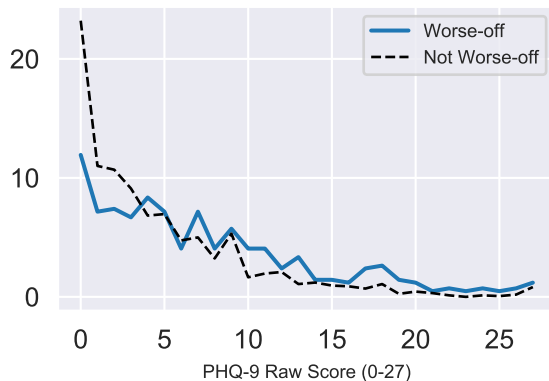
## By Income Group



## By Employment Status



## By Financial Situation

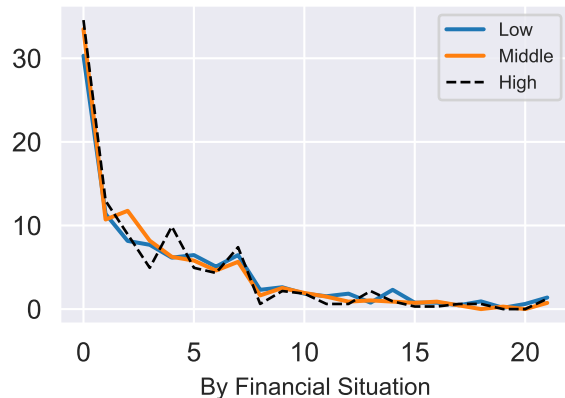


Supplementary Figure 2: GAD-7 Raw Scores by Selected Subgroup

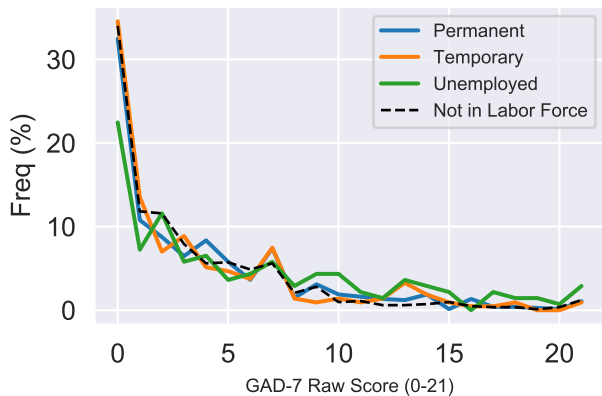
By Age Group



By Income Group



By Employment Status



By Financial Situation

