

1

2

3

4 Using the shock index to rule out stroke in patients with impaired consciousness in the
5 emergency department: a single-center retrospective study

6

7

8 Dr. Kosuke Kato^{1,2,6*}, Dr. Shogo Sagisaka^{1,3}, Dr. Masayuki Ueda⁴, Dr. Hidetaka Tamune^{1,5*}

9

10 ¹ Emergency and General Care Center, Tokyo Metropolitan Tama Medical Center, Fuchu, Tokyo, JP

11 ² Department of Obstetrics and Gynecology, Faculty of Medicine, The University of Tokyo, Bunkyo,
12 Tokyo, JP

13 ³ Department of Emergency and Critical Care Medicine, Japanese Red Cross Medical Center,
14 Shibuya, Tokyo, JP

15 ⁴ Department of Neurology and Stroke Medicine, Tokyo Metropolitan Tama Medical Center, Fuchu,
16 Tokyo, JP

17 ⁵ Department of Neuropsychiatry, Tokyo Metropolitan Tama Medical Center, Fuchu, Tokyo, JP

18 ⁶ Lead Contact

19

20 * Corresponding authors:

21 Kosuke Kato, kkatou-ky@umin.ac.jp

22 Hidetaka Tamune, tamune-ky@umin.ac.jp

23

24

25 [Abstract]

26 **Background**

27 Stroke is a significant cause of impaired consciousness. During a stroke, intracranial pressure
28 increases, resulting in hypertension and bradycardia, also known as the Cushing response. Previous
29 studies showed that systolic blood pressure (sBP) was useful for diagnosing stroke. We hypothesized
30 that stroke patients would show a low Shock Index (SI, pulse rate divided by sBP), and that a high SI
31 would therefore be also useful for ruling out stroke in patients with impaired consciousness.

32

33 **Methods**

34 This was a single-centre retrospective medical record review conducted between 2015 and 2016. We
35 identified 194 patients with stroke and 588 patients without stroke. We included all out-patients with
36 impaired consciousness who underwent cranial computed tomography (CT) and allocated them to
37 the stroke (cerebral infarction, intracerebral haemorrhage, and subarachnoid haemorrhage) and
38 non-stroke groups. For both the sBP and SI, we calculated the sensitivity and specificity of each
39 cut-off value and compared their diagnostic value.

40

41 **Results**

42 The area under the receiver operating characteristic curve was 0.801 (95% Confidence Interval:
43 0.761-0.840) for the sBP and 0.764 (0.729-0.799) for the SI. For an sBP higher than 90 mmHg and
44 an SI lower than 1, the sensitivity was 99.5% for both. The specificity was 10.9% and 15.1%,
45 respectively, and the negative likelihood ratio was 0.045 and 0.034, respectively. Subgroup analyses
46 suggested that predictive value of SI was enough high regardless of the subtype of stroke, patient's
47 past history of hypertension, or level of consciousness.

48

49 **Conclusion**

50 SI may be useful for excluding stroke in patients with impaired consciousness. This study suggested
51 that when the pulse rate exceeds sBP, stroke can be ruled out. In these cases, we suggest that
52 physicians focus on non-neurological examinations and treatments rather than diagnostic
53 examinations for stroke.

54

55 **1. Introduction**

56 Stroke is one of the most significant causes of impaired consciousness. Immediate
57 diagnosis and timely intervention are important in its management [1]. Thus, simple, accurate, timely,
58 and cost-effective methods are necessary for appropriate triage in emergency settings [2]. The
59 Cincinnati Prehospital Stroke Scale (CPSS) is a subset of neurophysical examinations, widely used
60 to detect suspected stroke in prehospital settings [3]. However, detailed neurological examination in
61 unconscious patients is often difficult due to their inability to cooperate with the physicians' requests.
62 In many institutions, patients with impaired consciousness routinely undergo cranial computed
63 tomography (CT). However, various diseases, including infection, electrolyte imbalance, and
64 metabolic disorders, also result in impaired consciousness. Hence, determining the likelihood of
65 stroke is crucial to prioritize appropriate examinations and treatments.

66 Vital signs are easily accessible parameters in all settings and can be quickly evaluated in
67 patients with impaired consciousness. Previous studies have shown that systolic blood pressure
68 (sBP) is useful for predicting the presence of stroke in patients with impaired consciousness [4–6],
69 and Ikeda et al. showed that a low sBP indicated a sufficiently low probability of stroke [4].

70 Increased intracranial pressure results in bradycardia with hypertension, which is known as
71 the Cushing response [7]. In contrast, intravascular hypovolaemia results in tachycardia with
72 hypotension. This is observed in other causes of impaired consciousness, including infection and
73 metabolic disorders. Shock Index (SI, pulse rate divided by sBP) is known as a predictor of

74 intravascular volume loss [8]. In principle, it is low in patients with stroke and relatively high when
75 the cause of impaired consciousness is not stroke. Although previous studies have demonstrated the
76 usefulness of the SI in evaluating the severity of haemorrhagic trauma [9], pneumonia [10], and
77 stroke [11], no reports have shown its diagnostic value for patients with impaired consciousness.

78 The present study focuses on the diagnostic value of the SI in adult patients with impaired
79 consciousness. We hypothesized that patients with stroke would show a low SI, and that a high SI
80 might be useful for ruling out stroke in patients with impaired consciousness.

81

82 **2. Methods**

83 **2-1. Study Setting**

84 This study was conducted at the Tokyo Metropolitan Tama Medical Center, a 789-bed
85 tertiary care teaching hospital in Tokyo, Japan. Approximately 35,000 out-patients, including 7,700
86 ambulance-borne patients, visit the emergency department (ED) of this institution annually. Cranial
87 CT and MRI are readily available here.

88

89 **2-2. Study design**

90 This is a retrospective observational study based on the medical records in the ED. We
91 initially screened the out-patient list of the ED for those who underwent plain cranial CT between
92 November 1, 2015 and October 31, 2016. We then included patients with impaired consciousness
93 based on a Glasgow Coma Scale (GCS) of less than 15, or when patients were understood to have
94 had impaired consciousness based on the medical records [12].

95 Patients with trauma or suspected trauma were excluded, since this study focused on
96 disorientation due to endogenous causes. We also excluded patients with cardiac arrest on arrival at
97 the ED, and patients with no recorded vital signs.

98 In Tokyo, there is an emergency service protocol which involves identifying patients with
99 a suspected stroke using the CPSS and transferring them directly to hospitals with a stroke care unit.
100 Owing to this, CPSS-positive patients have been screened out before arriving at our emergency unit.
101 Diagnosing CPSS-negative patients is assumed to be more difficult in terms of quickly
102 differentiating stroke from other causes of impaired consciousness. In this study, we collected the
103 data of CPSS-negative patients and focused on diagnosing stroke among them.

104 We collected data on the patients' vital signs upon arrival at the ED, particularly their
105 blood pressure and pulse rate. SI was then calculated using these data. A history of hypertension,
106 diabetes mellitus, or hyperlipidaemia was identified on the basis of a review of the medical records

107 or a history of the use of antihypertensive, hypoglycaemic, or lipid lowering agents. The previous
108 history of stroke was determined by reviewing medical records. The final diagnosis was made on the
109 basis of medical records and imaging results. We defined stroke as a cerebral infarction (CI),
110 intracerebral haemorrhage (ICH), or subarachnoid haemorrhage (SAH). The majority of the patients
111 with infarction were diagnosed with a head MRI, but MRI was omitted when the patient was in
112 critical condition. We allocated eligible patients into either the stroke or non-stroke group and
113 performed statistical analysis.

114

115 **2-3. Statistical Analysis**

116 The data were imported to EZR ver. 2.3 (R ver. 3.2.2 32bit) for statistical analysis [13].
117 Patients' characteristics were evaluated using the t-test and one-way analysis of variance for numeric
118 variables, and Fisher's exact test for categorical variables. Receiver operating characteristic (ROC)
119 curves were drawn for both the sBP and SI, to differentiate between the stroke and non-stroke groups.
120 The area under the curve (AUC) was then calculated for each parameter. AUCs were tested by
121 DeLong's test.

122 We calculated the sensitivity and specificity for each cut-off value for both the sBP and SI
123 and estimated 95% confidence intervals. We conducted analysis in the subgroup with a past history
124 of hypertension. We also conducted subgroup analysis based on level of consciousness, using a GCS

125 of 8 as the cut-off value.

126 **2-4. Ethical Considerations**

127 The study protocol was approved by the Research Ethics Committee, Tokyo Metropolitan
128 Tama Medical Center (Approval number: 28-142). Informed consent was obtained from participants
129 using an opt-out form on the website. This study complied with the Declaration of Helsinki and the
130 STROBE statement.

131

132 **3. Results**

133 **3-1. Participants**

134 A total of 4,678 patients with cranial CT scans were identified. Out of these, 3,852 patients
135 were excluded because of a history of trauma, cardiac arrest on arrival, clear consciousness, or lack
136 of data on their level of consciousness. Another 44 patients were excluded because of lack of data
137 regarding their vital signs. Among the remaining 782 patients, 194 patients (24.8%) were diagnosed
138 with stroke. This group comprised 77 patients (9.8%) with CI, 82 patients (10.5%) with ICH, and 35
139 patients (4.5%) with SAH (**Fig. 1**). The diagnoses of the non-stroke group patients are shown in

140 **Table 1.**

141

142 **Table 1**

143 **Non-stroke patients' characteristics**

144

Diagnosis	N = 588
epilepsy	84 (14.3%)
overdose	31 (5.3%)
low blood sugar	29 (4.9%)
respiratory infection	29 (4.9%)
sepsis	23 (3.9%)
psychological disorder	21 (3.6%)
syncope	21 (3.6%)
alcoholic	20 (3.4%)
chronic subdural haemorrhage	18 (3.1%)
urinary infection	15 (2.6%)
hepatic encephalopathy	15 (2.6%)
dehydration	13 (2.2%)
CO ₂ narcosis	9 (1.5%)
gastrointestinal haemorrhage	9 (1.5%)
tumor	8 (1.4%)
hyponatremia	7 (1.2%)
encephalitis/meningitis	7 (1.2%)
after cardiopulmonary arrest	7 (1.2%)
aortic dissection	6 (1.0%)
brain tumor	6 (1.0%)

diabetic ketoacidosis	5 (0.9%)
heat stroke	5 (0.9%)
shock with unknown causes	4 (0.7%)
low body temperature	4 (0.7%)
cellulitis	4 (0.7%)
ischemic heart disease	4 (0.7%)
abdominal haemorrhage	4 (0.7%)
others	56 (9.5%)
undiagnosed/close observation	124 (21.1%)

145

146 The patient characteristics are shown in **Table 2**. We selected the most appropriate statistic
 147 test according to the distribution of each variable, as mentioned in the Methods section. Systolic
 148 pressure was significantly higher in the stroke group than in the non-stroke group (171.2 mmHg and
 149 130.3 mmHg, respectively). The SI was significantly lower in the stroke group than in the non-stroke
 150 group (0.514 and 0.748, respectively). The other variables were not significantly different in these
 151 three groups.

152

153 **Table 2**

154 **Patient characteristics**

Variables	Stroke	Non-stroke	p value [†]	Cerebral infarction	Intracerebral haemorrhage	Subarachnoid haemorrhage	p value [‡]
-----------	--------	------------	----------------------	---------------------	---------------------------	--------------------------	----------------------

	N=194	N=588		N=77	N=82	N=35	
Male sex, n (%)	101 (52.0%)	329 (55.9%)	0.019 ^a	46 (59.7%)	44 (59.5%)	11 (31.4%)	0.058 ^a
Age (years) §	73.4 (18.1)	69.5 (21.6)	0.175 ^b	79.0 (14.3)	69.4 (17.1)	70.3 (24.6)	<0.01 ^c
History of hypertension, n (%)	105 (54.1%)	213 (36.2%)	<0.01 ^a	48 (62.3%)	43 (52.4%)	14 (40.0%)	0.196 ^a
History of diabetes mellitus, n (%)	34 (17.5%)	127 (21.6%)	0.16 ^a	17 (22.1%)	15 (18.3%)	2 (5.71%)	0.138 ^a
History of hyperlipidemia, n (%)	41 (19.4%)	96 (16.3%)	0.2 ^a	21 (27.2%)	15 (18.3%)	3 (8.57%)	0.285 ^a
History of stroke, n (%)	30 (21.1%)	101 (17.2%)	0.513 ^a	17 (22.0%)	12 (14.6%)	1 (2.86%)	0.032 ^a
Systolic blood pressure (mmHg) §	171.2 (35.5)	130.3 (32.9)	<0.01 ^b	163.2 (32.1)	181.6 (38.2)	164.1 (29.9)	<0.01 ^c
Diastolic blood pressure (mmHg) §	96.5 (23.0)	75.8 (20.4)	<0.01 ^b	94.0 (23.1)	100.4 (23.1)	93.1 (21.7)	0.133 ^c
Pulse pressure (mmHg) §	74.9 (26.0)	55.5 (22.5)	<0.01 ^b	70.3 (22.0)	80.8 (27.8)	71.0 (28.2)	0.022 ^c
Pulse Rate (/min) §	84.1 (20.4)	91.4 (25.3)	<0.01 ^b	84.3 (18.8)	84.7 (21.7)	82.4 (21.3)	0.854 ^c
Shock Index §	0.514 (0.158)	0.748 (0.319)	<0.01 ^b	0.534 (0.157)	0.490 (0.146)	0.525 (0.183)	0.193 ^c

155 † p values between Stroke group and Non-stroke group

156 ‡ p values among Cerebral infarction, Intracerebral haemorrhage and Subarachnoid haemorrhage

157 § Continuous normally distributed variables are expressed as mean (standard deviation)

158 a Fisher exact test

159 b Student's t-test

160 c one-way analysis of variance

161

162 **3-2. Diagnostic performance of sBP and SI**

163 The AUCs for sBP, SI, and pulse pressure were 0.801 (95% confidence interval: 0.761 -

164 0.840), 0.764 (0.729 - 0.799), and 0.717 (0.673 - 0.761), respectively (**Fig. 2A**). The AUC for sBP

165 was higher compared to that for sBP and pulse pressure ($p = 0.043$ and <0.001 , respectively,

166 DeLong's test).

167 **Table 3** shows the sensitivity and specificity for each cut-off value of sBP and SI.

168 Sensitivity for the cut-off values of sBP higher than 90 mmHg and SI lower than 1 reached 99.5%

169 (95% confidence interval: 98.6 - 100%) and 99.5% (98.6 - 100%), respectively. With these cut-off

170 values, specificity was 10.9% (9.61 - 12.2%) for an sBP of 90 mmHg and 15.1% (13.6 - 16.6%) for

171 an SI of 1. The negative likelihood ratio for an sBP higher than 90 mmHg was 0.045 (0.038 - 0.052)

172 and the one for an SI lower than 1 was 0.034 (0.029 - 0.039).

173

174 **Table 3**

175 **Cut-off values for systolic blood pressure and shock index for stroke**

176

Cut-off values for sBP (mmHg)	Sensitivity	Specificity	LR+	LR-	PV+	PV-
70	100.0%	3.6%	1.04	0	26.2%	100.0%
90†	99.5%	10.9%	1.12	0.0455	27.7%	98.5%
110	97.5%	23.2%	1.27	0.107	30.4%	96.5%
130	88.6%	49.7%	1.76	0.23	37.7%	92.7%
150	68.7%	72.6%	2.51	0.431	46.3%	87.1%
170	50.7%	87.9%	4.18	0.561	58.9%	83.9%
190	33.3%	96.4%	9.28	0.691	76.1%	80.8%
210	14.9%	98.8%	12.5	0.861	81.1%	77.2%

Cut-off values for SI	Sensitivity	Specificity	LR+	LR-	PV+	PV-
1.4	100.0%	4.1%	1.04	0	26.4%	100.0%
1.2	99.5%	7.7%	1.08	0.0657	27.0%	97.8%
1†	99.5%	15.1%	1.17	0.0336	28.7%	98.9%
0.8	93.9%	30.8%	1.36	0.197	31.8%	93.7%
0.6	75.3%	65.4%	2.18	0.378	42.7%	88.5%
0.4	24.2%	93.5%	3.73	0.81	56.1%	78.2%

177 sBP, systolic blood pressure; SI, shock index; LR+, positive likelihood ratio; LR-, negative

178 likelihood ratio; PV+, positive predictive value; PV-, negative predictive value.

179 † optimal cut-off

180

181 **3-3. Subgroup analysis: history of hypertension**

182 We performed a subgroup analysis to determine whether a history of hypertension would
183 affect the validity of these cut-off values. In patients with a past history of hypertension, the AUCs
184 for sBP and SI were 0.752 and 0.729, respectively. For an sBP of 90 mmHg, the sensitivity and
185 specificity were 99.0% and 7.21%, respectively, while for an SI of 1, they were at 99.0% and 7.69%
186 respectively. In patients without a past history of hypertension, on the other hand, the AUCs for the
187 sBP and SI were 0.822 and 0.780, respectively. The sensitivity and specificity for an sBP of 90
188 mmHg were 100% and 13.0%, respectively, while for an SI of 1 they measured 100% and 19.1%,
189 respectively.

190

191 **3-4. Subgroup analysis: consciousness level**

192 We also performed another subgroup analysis to determine whether the validity of these
193 cut-off values would be affected by the patient's level of consciousness. Of 782 eligible patients, we
194 had data available for 532 patients (68.0%) whose level of consciousness had been measured using
195 the GCS. The other patients' level of consciousness was recorded using the Japan Coma Scale,
196 which is also commonly used in Japan. Of these 532 patients, 121 had stroke and 411 had non-stroke
197 disease. **Table 4** shows the sensitivity and specificity of these cut-off values, both sBP higher than 90
198 and SI lower than 1, in the subgroups of patients with non-comatose level (GCS higher than 8), and

199 comatose level (GCS less than or equal to 8). In the non-stroke group, the ratio of patients with SI
200 equal to or higher than 1 is significantly higher in the subgroup of comatose level than in the
201 subgroup of non-comatose level ($p < 0.001$, chi-squared test).

202

203 **Table 4**

204 **Subgroup analysis of consciousness level (N = 532)**

	sBP > 90		SI < 1	
	Sensitivity	Specificity	Sensitivity	Specificity
GCS > 8 (N = 365)	98.5%	13.1%	100.0%	13.1%
GCS ≤ 8 (N = 167)	98.1%	15.0%	98.1%	22.1%

205

206 **3-5. Sensitivity analysis**

207 For sensitivity analysis, we evaluated the diagnostic performance of SI in different
208 subgroups of sBP (**Table 5**). In the subgroup with sBP of 91-110, the specificity was higher, which
209 indicated that SI would be better at ruling out stroke. In the subgroup of patients with sBP equals to
210 or higher than 90, the AUC for SI was 0.744 (95% confidence interval: 0.701 - 0.787, **Fig. 2A**),

211 which was not statistically different from AUC for SI in all patients ($p = 0.44$, DeLong's test).

212

213 **Table 5**

214 **Sensitivity and specificity of shock index lower than 1 in the subgroups of systolic blood**

215 **pressure**

sBP	Number of patients	Sensitivity	Specificity
- 90	75	0.0%	67.1%
91 - 110	75	100.0%	35.2%
111 - 130	173	100.0%	10.9%
131 - 150	176	100.0%	3.7%
151 - 170	125	100.0%	1.1%
171 -	170	100.0%	0.0%

216

217 **4. Discussion**

218 **4-1. Relevance of the study**

219 This study demonstrated that both the sBP and SI were useful in ruling out stroke in

220 patients with impaired consciousness (**Table 3** and **Fig. 2A**). Previous studies showed the utility of

221 sBP in diagnosing stroke [4–6]. According to one previous study, the positive likelihood ratio for an
222 sBP higher than 170 mmHg was 6.09, and the negative likelihood ratio for an sBP lower than 90
223 mmHg was 0.04 [4]. Our study showed similar results of 4.18 and 0.045, respectively, verifying the
224 diagnostic value of sBP in identifying patients with stroke.

225 Our study suggested that SI was another novel parameter that could be useful for ruling
226 out stroke. Calculation of accurate SI is time-consuming and unsuitable for emergency settings;
227 therefore, we suggest the cut-off value of 1. It means that a simple comparison of pulse rate and
228 systolic blood pressure is enough to apply in the clinical setting. The probability of stroke would be
229 sufficiently low in patients with an SI higher than 1, in other words, a pulse rate higher than their
230 sBP (**Table 3**).

231 Moreover, SI can be used concurrently with sBP. As mentioned above, stroke can be ruled
232 out in patients with sBP lower than 90 mmHg [4]; however, there is non-negligible fraction of
233 patients who should be ruled out stroke. We showed that SI was still a useful indicator even in the
234 patients with sBP equals to or higher than 90 (**Table 5** and **Fig. 2A**).

235 When SI was higher than 1 (pulse rate exceeded sBP), the emergency physician might be
236 able to prioritize non-neurological examination and treatment, such as antibiotic administration and
237 correction of electrolytes or blood sugar, over cranial imaging studies (**Fig. 2B**), since non-stroke
238 causes of impaired consciousness include infection, electrolyte imbalance, and metabolic disorders

239 (Table 1).

240 To control for possible confounding variables, we performed some subgroup
241 analyses—subtype of stroke, level of consciousness, and past history of hypertension. We found that
242 SI was not significantly different among the three sub-groups of patients with CI, ICH, or SAH,
243 though the mean sBP was higher in the ICH group (Table 3). We showed that SI had good diagnostic
244 performances regardless of level of consciousness (Table 4) and past history of hypertension,
245 although the specificity could be low in the patients with a past history of hypertension. Taken
246 together, we propose that stroke can be reasonably ruled out in more patients using both sBP and SI
247 as indicators (Fig. 2B).

248 In Japan, CT scans and MRI are readily available in many tertiary care centres, including
249 our institution. Once stroke is suspected, imaging is done to confirm the diagnosis [14]. In the
250 present study, all eligible patients received the diagnosis of stroke based on CT and MRI results.
251 Hence, the final diagnosis was definite in each case. However, we need to note that of all the patients
252 with impaired consciousness who underwent a cranial CT scan, only 25.6% were diagnosed with
253 stroke. Based on our results, we might be able to reduce unnecessary cranial CT scans in the future.

254 In cases of cardioembolic stroke, due to the possible background of atrial fibrillation, the
255 pulse rate is expected to exceed the sBP. However, we experienced no cases of cardioembolic stroke
256 with an SI higher than 1 in our study. We hypothesized that patients with cardioembolic stroke in the

257 present study were appropriately screened out using the CPSS. Further studies are necessary to
258 evaluate whether our results can be applied to patients with an irregular pulse.

259

260 **4-2. Limitations and future directions**

261 There were some limitations to this study. First, this was a single-centre review of patient
262 records, with only a small number of cases of impaired consciousness. Second, we did not include
263 patients who did not undergo a CT scan. However, as mentioned above, almost all patients
264 experiencing a disturbance of consciousness underwent CT scan at our hospital. Third, our judgment
265 as to the final diagnosis was based on the description of the physician in charge, which might have
266 lacked objectivity and depended on his or her diagnostic skills. Fourth, in recent years, it has been
267 pointed out that the amount of time elapsed since the vital sign was “last seen normal” is of
268 importance to interpret vital signs. As we had no access to these data in this study, this is a potential
269 confounding factor. Further large-scale, multi-centre, prospective studies are required to verify the
270 utility of SI for diagnosing stroke. In addition, as the specificity of SI was not high enough,
271 examinations with higher specificity, including CT, are still required to make the final diagnosis.
272 Rapid and easily accessible measurement with higher specificity is desirable.

273

274 **5. Conclusion**

275 SI could serve as an indicator for stroke in CPSS-negative patients with impaired
276 consciousness. Our study suggested that an SI higher than 1 ruled out stroke in a substantial
277 percentage of adult patients with impaired consciousness. In cases in which the patient's pulse rate is
278 higher than their sBP, the emergency physician may be able to prioritize non-neurological
279 examinations and treatments over cranial imaging studies (**Fig. 2B**).

280

281 **Acknowledgements**

282 We thank Mr. James Robert Valera for his assistance in editing this manuscript, all of the
283 staff and patients who contributed to this study.

284 **Reference**

285

- 286 1. Kothari R, Barsan W, Brott T, Broderick J, Ashbrock S. Frequency and accuracy of prehospital
287 diagnosis of acute stroke. *Stroke*. 1995;26: 937–941. doi:10.1161/01.str.26.6.937
- 288 2. Tamune H, Kuki T, Kashiyama T, Uchihara T. Does This Adult Patient With Jolt Accentuation of
289 Headache Have Acute Meningitis? *Headache*. 2018;58: 1503–1510. doi:10.1111/head.13376
- 290 3. Jauch EC, Saver JL, Adams HPJ, Bruno A, Connors JJB, Demaerschalk BM, et al. Guidelines for
291 the early management of patients with acute ischemic stroke: a guideline for healthcare
292 professionals from the American Heart Association/American Stroke Association. *Stroke*.
293 2013;44: 870–947. doi:10.1161/STR.0b013e318284056a
- 294 4. Ikeda M, Matsunaga T, Irabu N, Yoshida S. Using vital signs to diagnose impaired
295 consciousness: cross sectional observational study. *BMJ*. 2002;325: 800.
296 doi:10.1136/bmj.325.7368.800
- 297 5. Geetadevi Y, Joshi R, Pai M, Kalantri SP. Simple clinical predictors of brain lesions in patients
298 with impaired consciousness: a cross sectional study from a rural, tertiary hospital in central India.
299 *Clin Neurol Neurosurg*. 2005;108: 25–31. doi:10.1016/j.clineuro.2004.12.018
- 300 6. Irisawa T, Iwami T, Kitamura T, Nishiyama C, Sakai T, Tanigawa-Sugihara K, et al. An
301 association between systolic blood pressure and stroke among patients with impaired
302 consciousness in out-of-hospital emergency settings. *BMC Emerg Med*. 2013;13: 24.
303 doi:10.1186/1471-227X-13-24
- 304 7. Bott R. Guyton and Hall Textbook of Medical Physiology 13ed. Igarss 2014. 2014.
305 doi:10.1007/s13398-014-0173-7.2
- 306 8. Rady MY, Nightingale P, Little RA, Edwards JD. Shock index: a re-evaluation in acute
307 circulatory failure. *Resuscitation*. 1992;23: 227–234. doi:10.1016/0300-9572(92)90006-x
- 308 9. Mutschler M, Nienaber U, Munzberg M, Wolf C, Schoechl H, Paffrath T, et al. The Shock Index
309 revisited - a fast guide to transfusion requirement? A retrospective analysis on 21,853 patients
310 derived from the TraumaRegister DGU. *Crit Care*. 2013;17: R172. doi:10.1186/cc12851
- 311 10. Sankaran P, Kamath A V, Tariq SM, Ruffell H, Smith AC, Prentice P, et al. Are shock index and
312 adjusted shock index useful in predicting mortality and length of stay in community-acquired
313 pneumonia? *Eur J Intern Med*. 2011;22: 282–285. doi:10.1016/j.ejim.2010.12.009
- 314 11. McCall SJ, Musgrave SD, Potter JF, Hale R, Clark AB, Mamas MA, et al. The shock index
315 predicts acute mortality outcomes in stroke. *Int J Cardiol*. 2015;182: 523–527.
316 doi:10.1016/j.ijcard.2014.12.175
- 317 12. Ono K, Wada K, Takahara T, Shirohani T. Indications for computed tomography in patients with
318 mild head injury. *Neurol Med Chir (Tokyo)*. 2007;47: 291–298. doi:10.2176/nmc.47.291
- 319 13. Kanda Y. Investigation of the freely available easy-to-use software “EZ” for medical statistics.

- 320 Bone Marrow Transplant. 2013;48: 452–458. doi:10.1038/bmt.2012.244
- 321 14. Redd V, Levin S, Toerper M, Creel A, Peterson S. Effects of fully accessible magnetic resonance
- 322 imaging in the emergency department. Acad Emerg Med. 2015;22: 741–749.
- 323 doi:10.1111/acem.12686
- 324
- 325

326 **Figure Legends:**

327 **Fig 1. Flow chart of the study.**

328 A total of 4,678 CPSS-negative patients with cranial CT scan were identified. Exclusion
329 criteria and distribution of the final diagnoses are shown. For more details, see the main text and
330 Tables.

331

332 **Fig 2. Diagnostic values of sBP and SI and relevance of the present study.**

333 (A) ROC curves and AUCs for sBP, SI, and SI in patients with sBP ≥ 90 (95% confidence
334 interval). AUC for sBP are higher than that of SI ($p = 0.043$, DeLong's test). AUCs for SI and SI in
335 patients with sBP ≥ 90 are not statistically different from each other ($p = 0.44$, DeLong's test).

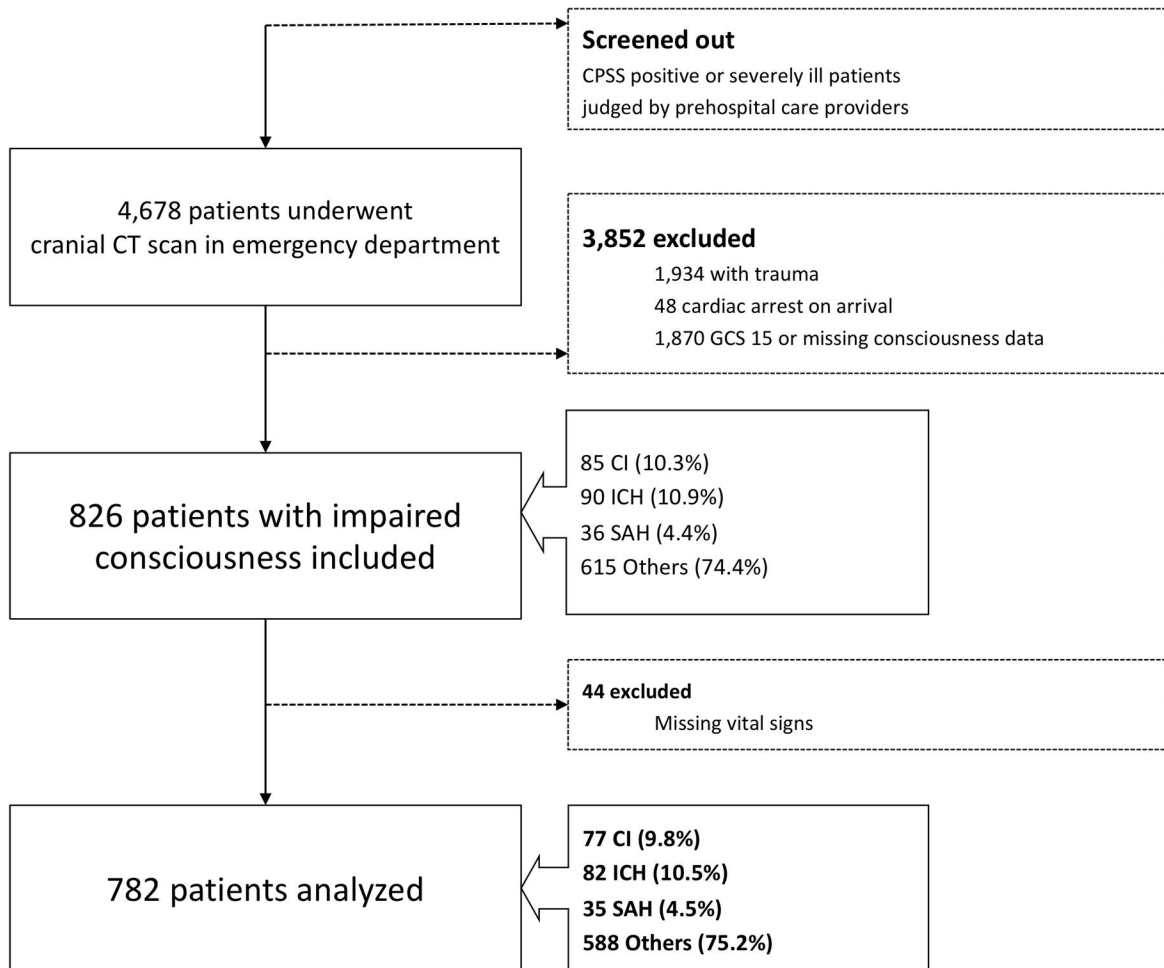
336 (B) Relevance of the present study and proposal for clinical setting.

337 Above: Stroke can be ruled out in patients with sBP lower than 90 mmHg (Gray persons);
338 however, there is non-negligible fraction of patients who should be ruled out stroke (Black and
339 Green persons).

340 Bottom: When SI is higher than 1 (pulse rate exceeds sBP), stroke can be also ruled out
341 based on the present study; therefore, the emergency physician can prioritize non-neurological
342 examination and treatment. SI can be additionally applicable with sBP. See the main text for more
343 details.

344

345 Abbreviations: AUC, area under the ROC curve; CPSS, Cincinnati Prehospital Stroke Scale; DDx,
346 differential diagnosis; PR, pulse rate [1/min]; ROC, receiver operating characteristic; SI, shock index;
347 sBP, systolic blood pressure [mmHg].



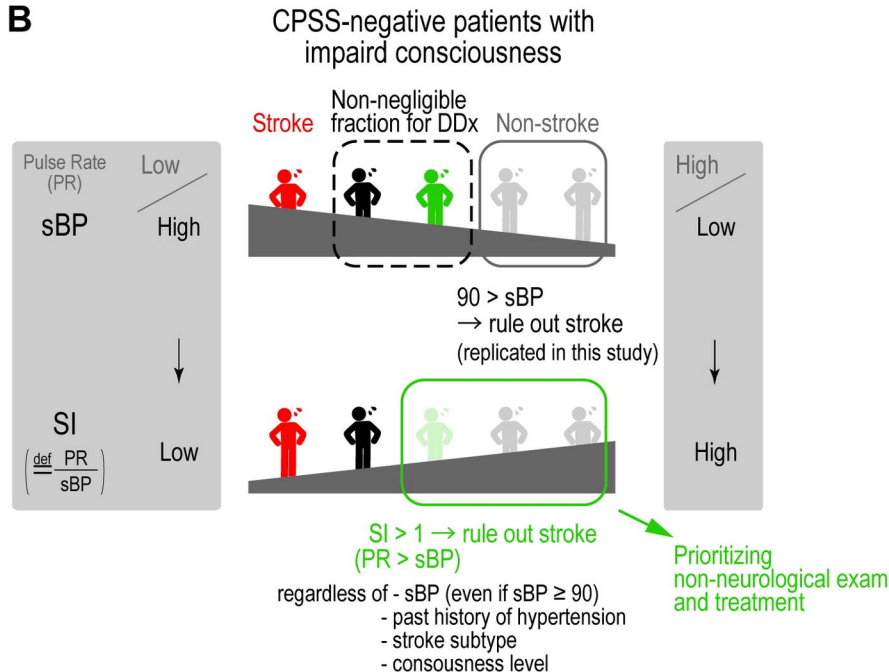
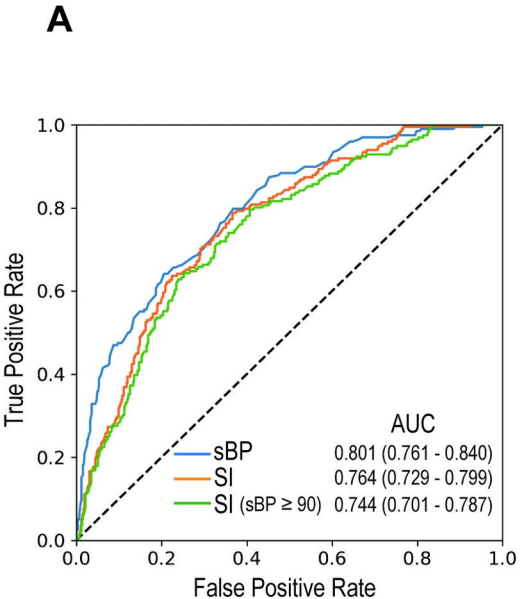


Figure 2