

1 **SARS-CoV-2 Detection in Different Respiratory Sites: A Systematic Review and**  
2 **Meta-Analysis**

3  
4 Abbas Mohammadi<sup>a\*</sup>, Elmira Esmaeilzadeh<sup>a\*</sup>, Yijia Li<sup>a\*</sup>, Ronald J. Bosch<sup>b</sup>, Jonathan Z.  
5 Li<sup>a</sup>

6  
7 <sup>a</sup>Brigham and Women's Hospital, Harvard Medical School, Boston, MA, USA

8 <sup>b</sup>Harvard T.H. Chan School of Public Health, Boston, MA, USA

9 \*Authors contributed equally

10

11 **Corresponding Author:**

12 Jonathan Li, MD

13 Brigham and Women's Hospital

14 Harvard Medical School

15 [jlili@bwh.harvard.edu](mailto:jlili@bwh.harvard.edu)

16

17 **Key words:** COVID-19, SARS-CoV-2, diagnosis, shedding, nasopharyngeal,

18 oropharyngeal, sputum

19

20 **Disclosures:** Dr. Li has consulted for Abbvie and Jan Biotech.

## 21 **Summary**

22 **Background:** The accurate detection of SARS-CoV-2 through respiratory sampling is  
23 critical for the prevention of further transmission and the timely initiation of treatment for  
24 COVID-19. There is a diverse range of SARS-CoV-2 detection rates in reported studies,  
25 with uncertainty as to the optimal sampling strategy for COVID-19 diagnosis and  
26 monitoring.

27 **Methods:** We performed a systematic review and meta-analysis of studies comparing  
28 respiratory sampling strategies for the detection of SARS-CoV-2 RNA. The inclusion  
29 criteria were studies that assessed at least two respiratory sampling sites  
30 (oropharyngeal swab, nasopharyngeal swab, and sputum) in participants with COVID-  
31 19. The percentage positive tests were compared between sampling modalities by  
32 constructing a Z-test assuming independence and using the standard errors obtained  
33 from the random effects meta-analysis.

34 **Findings:** From 1039 total studies, we identified 11 studies that met our inclusion  
35 criteria, with SARS-CoV-2 testing results from a total of 3442 respiratory tract  
36 specimens. Compared to nasopharyngeal swab sampling, sputum testing resulted in  
37 significantly higher rates of SARS-CoV-2 RNA detection while oropharyngeal swab  
38 testing had lower rates of viral RNA detection. Earlier sampling after symptom onset  
39 was associated with improved detection rates, but the differences in SARS-CoV-2 RNA  
40 detection by sampling method was consistent regardless of the duration of symptoms.

41 **Interpretation:** The results support sputum sampling as a primary method of COVID-19  
42 diagnosis and monitoring, and highlight the importance of early testing after symptom  
43 onset to increase the rates of COVID-19 diagnosis.

44

45 **Funding:** This study was funded in part by the NIH grants U01AI106701 and by the  
46 Harvard University for AIDS Research (NIAID 5P30AI060354).

## 47 **Introduction**

48 Worldwide, there are now over 3 million confirmed cases and 250,000 deaths due to  
49 Coronavirus disease 2019 (COVID-19), caused by the SARS-CoV-2 virus. The most  
50 common route of viral transmission is through exposure to respiratory secretions of  
51 close contacts<sup>1</sup> as the respiratory tract represents the major area of viral shedding.<sup>2</sup> The  
52 accurate diagnosis of COVID-19 infection through respiratory sampling is critical for the  
53 prevention of further transmission, clinical trial inclusion criteria and the timely initiation  
54 of treatment. In addition to its importance in diagnosis, respiratory sampling plays a  
55 central role in determining the duration of viral shedding, with implications for clinical  
56 management of potentially infectious patients, decisions on the duration of social  
57 isolation, and our understanding of viral transmission and pathogenesis.<sup>3</sup>

58  
59 Nasopharyngeal swabs are one of the most commonly used methods of respiratory  
60 secretion sampling for the detection of SARS-CoV-2 viral RNA. However, the use of  
61 nasopharyngeal swabs have a number of drawbacks, including that high-quality swab  
62 samples are technically challenging to obtain,<sup>4</sup> nasopharyngeal swabbing increases the  
63 risk to healthcare providers due to the frequent induction of reflex sneezing/coughing,  
64 and the disruption in the supply of swabs, transport media, and personal protective  
65 equipment (PPE). For all of these reasons, there is intense interest in the comparison of  
66 nasopharyngeal swab and alternative sampling methods for the detection of SARS-  
67 CoV-2 RNA at respiratory sites. In Asia and other parts of the world, oropharyngeal  
68 swabs are the preferred method of COVID-19 diagnosis<sup>2,3</sup> and there is also interest in  
69 the study of sputum as an effective, and less invasive method of COVID-19 diagnosis.

70

71 In the published literature, there has been a wide variance in the reported SARS-CoV-2  
72 detection rates with each of the diagnostic methods. In COVID-19 diagnosed  
73 individuals, the reported SARS-CoV-2 detection rate has ranged from 25% to >70% of  
74 collected nasopharyngeal swabs,<sup>5,6</sup> 32% to 65% for oropharyngeal swabs,<sup>2,5</sup> and 48%  
75 to >90% for sputum.<sup>7,8</sup> This has led to significant uncertainty and confusion in the field  
76 as to the reason behind the disparate testing results and the optimal diagnostic  
77 sampling strategy for diagnosis and monitoring of COVID-19 patients. In this study, we  
78 performed a systematic review of the literature and meta-analysis to compare the ability  
79 of nasopharyngeal swabs, oropharyngeal swabs, and sputum to detect SARS-CoV-2  
80 RNA. The results demonstrate that sputum had the highest rate of SARS-CoV-2  
81 detection and oropharyngeal swab had the lowest. In addition, much of the variability  
82 between reported results in the literature can be attributed to differences in the  
83 underlying participant population, with the higher levels of detection for those earliest in  
84 the COVID-19 disease course.

85

## 86 **Methods**

### 87 **Search strategy and selection criteria**

88 In this systematic review and meta-analysis, we used the Preferred Reporting Items for  
89 Systematic Reviews and Meta-Analyses (PRISMA) to review literatures and report our  
90 results (Figure 1). A computerized search was implemented in PubMed, MedRxiv and  
91 BioRxiv using a search term, "((COVID OR COVID-19 OR SARS) AND (throat OR nasal  
92 OR nasopharyngeal OR oropharyngeal OR oral OR saliva OR sputum OR PCR))". The  
93 search was completed through April 30, 2020. In addition, we reviewed the reference  
94 sections of relevant articles. We included studies that assessed at least two respiratory  
95 sites of sampling performed by healthcare workers for individuals with confirmed  
96 COVID-19. When numerical results were not reported or further clarification was  
97 needed, we contacted the corresponding authors for additional information.

98  
99 Two authors (AM, EE) screened the citations and three authors (AM, EE, YL)  
100 independently extracted data from the included studies. In the 11 studies included in  
101 this meta-analysis, we extracted summary estimates from tables or texts from four  
102 studies. For the other nine studies, we were able to obtain individual-level data from the  
103 manuscripts or study authors.

### 104 105 **Data analysis**

106 The estimated percentages of positive SARS-CoV-2 qPCR tests and the 95%  
107 confidence intervals were calculated for each sampling strategy using random-effects  
108 meta-analyses for binomial data using Stata Metaprop package.<sup>9</sup> We also performed an  
109 analysis stratified by the duration of symptoms prior to the testing, with results  
110 categorized as 0-7 days, 8-14 days, >14 days from symptom onset. We compared the

111 proportion of positive tests between sampling sites by constructing a Z-test assuming  
112 independence and using the standard errors obtained from the random effects meta-  
113 analysis. For analyses involving studies with small sample size and sensitivity value  
114 extremely high (towards 1) or low (towards 0), we incorporated Freeman-Tukey Double  
115 Arcsine Transformation method to stabilize the variances for the by-study confidence  
116 intervals.

117  
118 We used inconsistency index ( $I^2$ ) test to assess the heterogeneity between each study.  
119 Meta-analyses were performed using Stata 13.1 (StataCorp). GraphPad 8.5 (Prism)  
120 was used to demonstrate sensitivities at different time points from different sites of  
121 respiratory tracts. No adjustments for multiple comparisons were performed.

122

### 123 **Role of the funding source**

124 The funding source of this study had no role in study design, data extraction, data  
125 analysis, data interpretation, or writing of this study.

126

## 127 **Results**

128 From the 1039 studies identified in our search, we excluded 21 duplicates and after  
129 screening the abstracts of the remaining articles, 90 full-text articles were obtained for  
130 further review (Figure 1). Based on our selection criteria, 79 of those studies were  
131 excluded and 11 studies met our inclusion criteria.<sup>1,2,5-7,10-15</sup> In total, 757 COVID-19  
132 confirmed patients with 3442 respiratory samples were included in this analysis,  
133 including results from 1083 oropharyngeal swabs, 1299 nasopharyngeal swabs and  
134 1060 sputum samples. By sampling method, the estimated percentage of positive  
135 samples was 43% (95% confidence interval [95% CI]: 34-52%) for oropharyngeal  
136 swabs, 54% (95% CI: 41-67%) for nasopharyngeal swabs and 71% (95% CI: 61-80%)  
137 for sputum (Figure 2A-C). The rate of SARS-CoV-2 detection was significantly higher in  
138 sputum than either oropharyngeal swabs or nasopharyngeal swabs (Figure 2D).

139  
140 Among the 11 studies, 6 provided details on the time of sampling after symptom onset,  
141 including results from 540 oropharyngeal swabs, 759 nasopharyngeal swabs, and 487  
142 sputum samples. For all sampling methods, rates of SARS-CoV-2 detection was highest  
143 early after symptom onset. For oropharyngeal swab sampling, the estimated percentage  
144 of positive tests were 75% (95% CI: 60-88%) between days 0-7, 35% (95% CI: 27-43%)  
145 between days 8-14 and 12% (95% CI: 2-25%) after 14 days from symptom onset  
146 (Figure 3A). For nasopharyngeal swabs, the estimated percentage positive was 80%  
147 (95% CI: 66-91%), 59% (95% CI: 53-64%) and 36% (95% CI: 18-57%) at 0-7 days, 8-14  
148 days and >14 days after symptom onset, respectively (Figure 3B). For sputum, the  
149 estimated percentage positive was 98% (95% CI: 89-100%), 69% (95% CI: 57-80%),  
150 and 46% (95% CI: 23-70%) at 0-7 days, 8-14 days, and >14 days after symptom onset,  
151 respectively (Figure 3C). For every time period, sputum had the highest percentage of



152 positive results while oropharyngeal swabs had the lowest (Figure 3D).

153

154 In the overall pooled analysis, we detected significant heterogeneity between studies  
155 ( $P < 0.001$  for all detection methods, Figure 2A-C). Much of the heterogeneity between  
156 studies could be accounted for by differences in the participant populations, specifically  
157 the timing of symptom onset. In the analysis stratified by days since symptom onset, we  
158 observed substantially lower rates of heterogeneity between studies (Figure 3A-C).

159

## 160 **Discussion**

161 In this systematic review and meta-analysis, we combined data from 11 papers that in  
162 total reported SARS-CoV-2 RNA testing from a total of 1299 nasopharyngeal swabs,  
163 1083 oropharyngeal swabs, and 1060 sputum samples. The results demonstrate that  
164 the rate of sample positivity was highest in sputum specimens and lowest in  
165 oropharyngeal swabs. We detected heterogeneity between the reported results by  
166 study, much of which could be accounted for by differences in the timing of respiratory  
167 sampling. For all three sampling modalities, we found that the likelihood of a positive  
168 result declined with longer time since symptom onset. Regardless of the time frame  
169 studied, sputum consistently had the highest positive rates while oropharyngeal swabs  
170 had the lowest.

171  
172 Like SARS-CoV, the disease manifestation of SARS-CoV-2 is largely in the lower  
173 respiratory tract.<sup>16,17</sup> Prior studies have noted a higher rate of SARS-CoV-2 detection  
174 and viral loads in lower respiratory tract samples, such as bronchoalveolar lavage fluid  
175 and endotracheal aspirates, compared to upper respiratory tract specimens.<sup>2,3</sup> These  
176 results are concordant with the far higher density of the SARS-CoV-2 viral target, the  
177 human angiotensin-converting enzyme 2 (ACE2) receptor, in pneumocytes and in lower  
178 airway epithelial cells compared to epithelial cells in the upper airway.<sup>18,19</sup> The higher  
179 SARS-CoV-2 detection rates in sputum samples likely relate to their origin, which is  
180 derived at least partially from the lower respiratory tract. This suggests that sampling of  
181 only upper respiratory tract samples, e.g., using nasopharyngeal swabs, may lead to  
182 missed diagnosis of COVID-19 and an inaccurate assumption of SARS-CoV-2 viral  
183 clearance that dictates the duration of social isolation and return to work policies.

184

185 Nasopharyngeal swabs remain the gold-standard for COVID-19 diagnosis in many parts  
186 of the world, but their use has a number of drawbacks. First, nasopharyngeal swabs can  
187 be technically challenging to obtain<sup>4</sup> and poor sample quality remains a problem.  
188 Second, nasopharyngeal swabbing causes discomfort and frequent reflex sneezing or  
189 coughing, and thus requires high-level personal protective equipment for healthcare  
190 workers, which are in short supply. Finally, there is a global shortage of nasopharyngeal  
191 swabs and transport medium that necessitates the search for potential alternative  
192 methods for the sampling of respiratory secretions. In addition to our finding of improved  
193 detection of SARS-CoV-2 RNA, the use of sputum sampling removes the need for  
194 difficult to obtain swabs, improves patient acceptance, and increases the chances of  
195 sample self-collection by the patient, which would decrease the risk to healthcare  
196 workers. Furthermore, the higher sensitivity of sputum for the detection of COVID-19 is  
197 also supported by previously reported studies on the detection of non-COVID-19  
198 respiratory viruses.<sup>20-22</sup>

199  
200 One limitation of this meta-analysis is that the majority of participants in these studies  
201 enrolled hospitalized patients and it is unclear how the results may differ for individuals  
202 with asymptomatic infection or only mild symptoms. However, there are reports that  
203 rates of nasopharyngeal, oropharyngeal, and sputum positivity may not be substantially  
204 altered in those with mild symptoms versus those with severe disease.<sup>12</sup> A potential  
205 limitation with the use of sputum is that not all COVID-19 patients are able to  
206 expectorate sputum, which may be reflected by the lower number of tested sputum  
207 samples in the included studies compared to nasopharyngeal or oropharyngeal swabs.  
208 Thus, for those who are unable to produce sputum, nasopharyngeal testing may  
209 continue to play an important role in the diagnosis or monitoring of COVID-19 patients.

210 A recent report also suggested that saliva samples had comparable diagnostic accuracy  
211 compared to nasopharyngeal swabs, although this will need to be confirmed with  
212 additional studies.<sup>23</sup> Finally, there were differences between studies in the qPCR assay  
213 and patient selection (Supplemental Tables 1 and 2) that likely accounted for some of  
214 the heterogeneity, the results were generally consistent within most studies and we  
215 were able to dramatically reduce the detected heterogeneity of the studies by  
216 comparing results by timing of symptom onset.

217  
218 In summary, this systematic review and meta-analysis demonstrates that compared to  
219 nasopharyngeal swab sampling, sputum testing resulted in significantly higher rates of  
220 SARS-CoV-2 RNA detection while oropharyngeal swab testing had lower rates of viral  
221 RNA detection. Earlier sampling after symptom onset was associated with improved  
222 detection rates, but the differences in SARS-CoV-2 RNA detection was consistent  
223 between sampling strategies regardless of the duration of symptoms. The results  
224 support the use of sputum testing as a primary method of COVID-19 diagnosis and  
225 monitoring.

226 **Contributors**

227 AM, EE, YL, and JL performed the literature review and data abstraction. AM, EE, YL,  
228 RB, and JL were involved in the statistical analysis. All authors contributed to the writing  
229 and editing of the manuscript.

230

231 **Acknowledgements**

232 We would like to thank Dr. Myoung-don Oh for providing additional data from his  
233 manuscript and the authors of contributing studies and MedRxiv for making the findings  
234 available through publicly accessible pre-prints.

## 235 **References**

- 236 1. Chan JF, Yuan S, Kok KH, et al. A familial cluster of pneumonia associated with  
237 the 2019 novel coronavirus indicating person-to-person transmission: a study of a family  
238 cluster. *Lancet* 2020; **395**(10223): 514-23.
- 239 2. Wang W, Xu Y, Gao R, et al. Detection of SARS-CoV-2 in Different Types of  
240 Clinical Specimens. *JAMA* 2020.
- 241 3. To KK, Tsang OT, Leung WS, et al. Temporal profiles of viral load in posterior  
242 oropharyngeal saliva samples and serum antibody responses during infection by SARS-  
243 CoV-2: an observational cohort study. *Lancet Infect Dis* 2020; **20**(5): 565-74.
- 244 4. Marty FM, Chen K, Verrill KA. How to Obtain a Nasopharyngeal Swab Specimen.  
245 *N Engl J Med* 2020.
- 246 5. Yu F, Yan L, Wang N, et al. Quantitative Detection and Viral Load Analysis of  
247 SARS-CoV-2 in Infected Patients. *Clin Infect Dis* 2020.
- 248 6. Kim ES, Chin BS, Kang CK, et al. Clinical Course and Outcomes of Patients with  
249 Severe Acute Respiratory Syndrome Coronavirus 2 Infection: a Preliminary Report of  
250 the First 28 Patients from the Korean Cohort Study on COVID-19. *J Korean Med Sci*  
251 2020; **35**(13): e142.
- 252 7. Wu J, Liu J, Li S, et al. Detection and analysis of nucleic acid in various biological  
253 samples of COVID-19 patients. *Travel Med Infect Dis* 2020: 101673.
- 254 8. Chan JF, Yip CC, To KK, et al. Improved Molecular Diagnosis of COVID-19 by  
255 the Novel, Highly Sensitive and Specific COVID-19-RdRp/HeI Real-Time Reverse  
256 Transcription-PCR Assay Validated In Vitro and with Clinical Specimens. 2020; **58**(5).
- 257 9. Nyaga VN, Arbyn M, Aerts M. Metaprop: a Stata command to perform meta-  
258 analysis of binomial data. *Arch Public Health* 2014; **72**(1): 39.

- 259 10. Team C-I. Clinical and virologic characteristics of the first 12 patients with  
260 coronavirus disease 2019 (COVID-19) in the United States. *Nat Med* 2020.
- 261 11. Lin C, Xiang J, Yan M, Li H, Huang S, Shen C. Comparison of throat swabs and  
262 sputum specimens for viral nucleic acid detection in 52 cases of novel coronavirus  
263 (SARS-Cov-2)-infected pneumonia (COVID-19). *Clin Chem Lab Med* 2020.
- 264 12. Yang Y, Yang M, Shen C, et al. Evaluating the accuracy of different respiratory  
265 specimens in the laboratory diagnosis and monitoring the viral shedding of 2019-nCoV  
266 infections. *medRxiv* 2020: 2020.02.11.20021493.
- 267 13. Chen C, Gao G, Xu Y, et al. SARS-CoV-2-Positive Sputum and Feces After  
268 Conversion of Pharyngeal Samples in Patients With COVID-19. *Ann Intern Med* 2020.
- 269 14. Lo IL, Lio CF, Cheong HH, et al. Evaluation of SARS-CoV-2 RNA shedding in  
270 clinical specimens and clinical characteristics of 10 patients with COVID-19 in Macau.  
271 *Int J Biol Sci* 2020; **16**(10): 1698-707.
- 272 15. Pan Y, Zhang D, Yang P, Poon LLM, Wang Q. Viral load of SARS-CoV-2 in  
273 clinical samples. *Lancet Infect Dis* 2020; **20**(4): 411-2.
- 274 16. Ding Y, Wang H, Shen H, et al. The clinical pathology of severe acute respiratory  
275 syndrome (SARS): a report from China. *J Pathol* 2003; **200**(3): 282-9.
- 276 17. Menter T, Haslbauer JD, Nienhold R, et al. Post-mortem examination of  
277 COVID19 patients reveals diffuse alveolar damage with severe capillary congestion and  
278 variegated findings of lungs and other organs suggesting vascular dysfunction.  
279 *Histopathology* 2020.
- 280 18. Bosch BJ, Smits SL, Haagmans BL. Membrane ectopeptidases targeted by  
281 human coronaviruses. *Curr Opin Virol* 2014; **6**: 55-60.

- 282 19. Hamming I, Timens W, Bulthuis ML, Lely AT, Navis G, van Goor H. Tissue  
283 distribution of ACE2 protein, the functional receptor for SARS coronavirus. A first step in  
284 understanding SARS pathogenesis. *J Pathol* 2004; **203**(2): 631-7.
- 285 20. Jeong JH, Kim KH, Jeong SH, Park JW, Lee SM, Seo YH. Comparison of  
286 sputum and nasopharyngeal swabs for detection of respiratory viruses. *J Med Virol*  
287 2014; **86**(12): 2122-7.
- 288 21. Falsey AR, Formica MA, Walsh EE. Yield of sputum for viral detection by reverse  
289 transcriptase PCR in adults hospitalized with respiratory illness. *J Clin Microbiol* 2012;  
290 **50**(1): 21-4.
- 291 22. Branche AR, Walsh EE, Formica MA, Falsey AR. Detection of respiratory viruses  
292 in sputum from adults by use of automated multiplex PCR. *J Clin Microbiol* 2014;  
293 **52**(10): 3590-6.
- 294 23. Wyllie AL, Fournier J, Casanovas-Massana A, et al. Saliva is more sensitive for  
295 SARS-CoV-2 detection in COVID-19 patients than nasopharyngeal swabs. *medRxiv*  
296 2020: 2020.04.16.20067835.





## PRISMA 2009 Flow Diagram

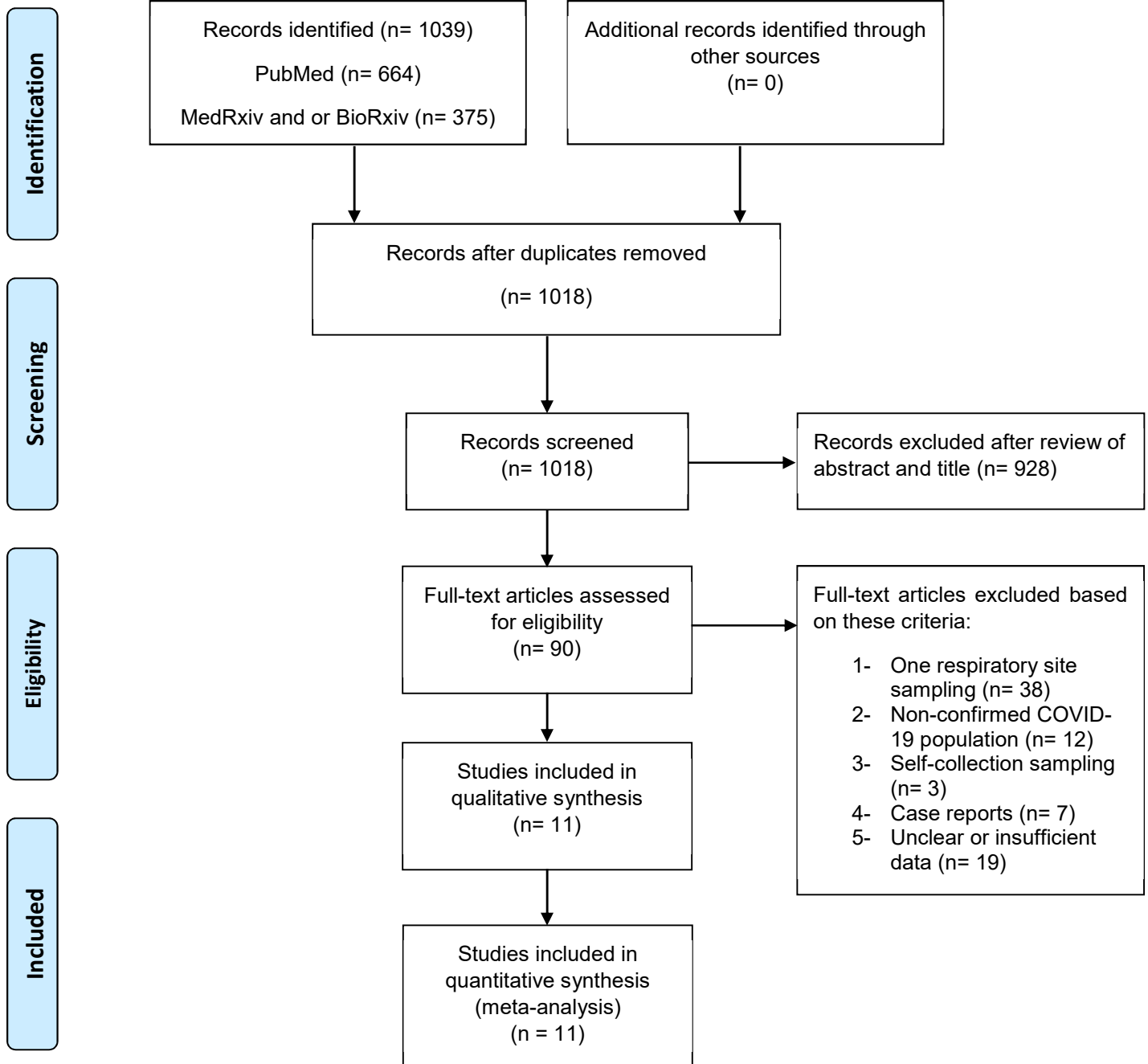
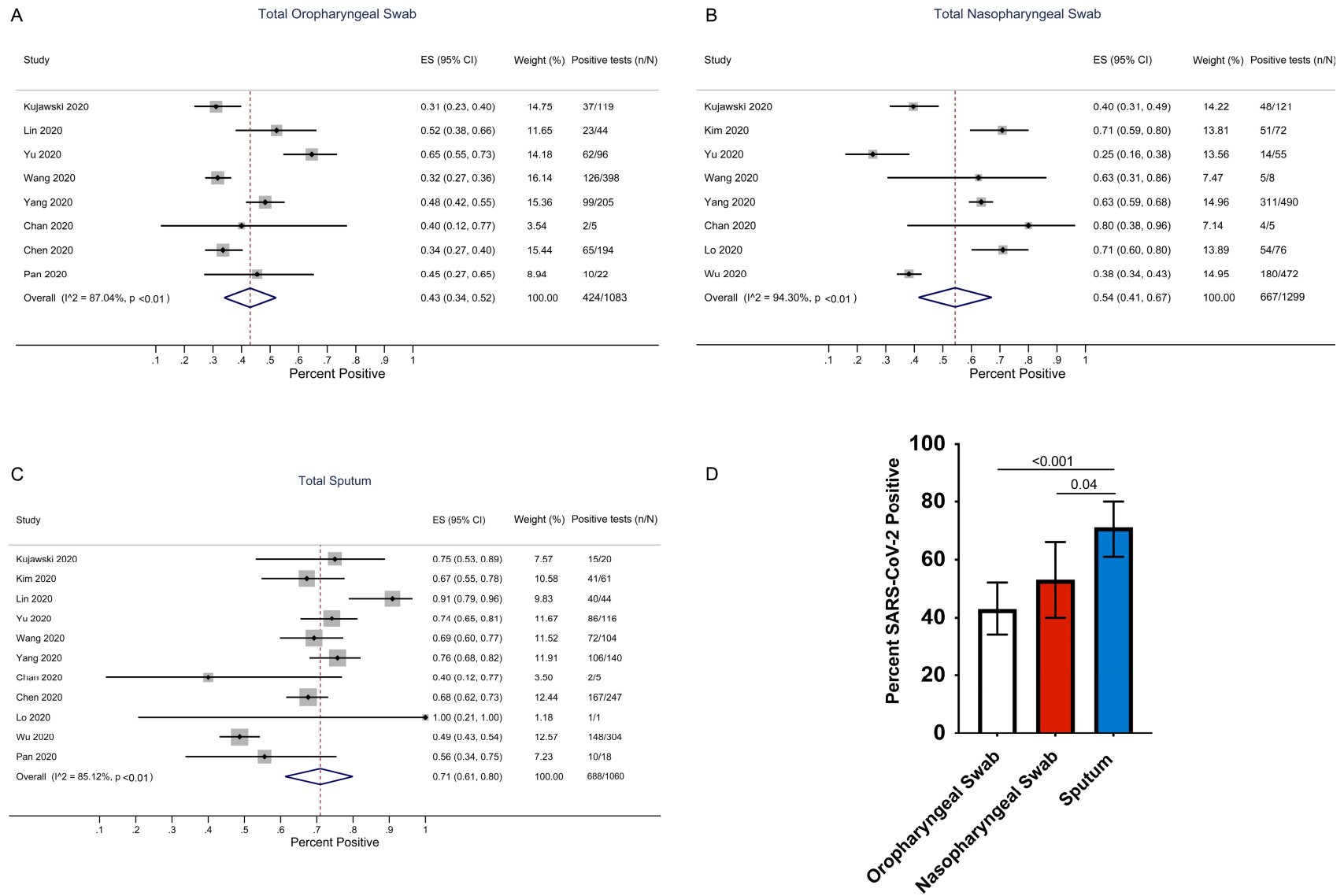


Figure 1. Study profile.

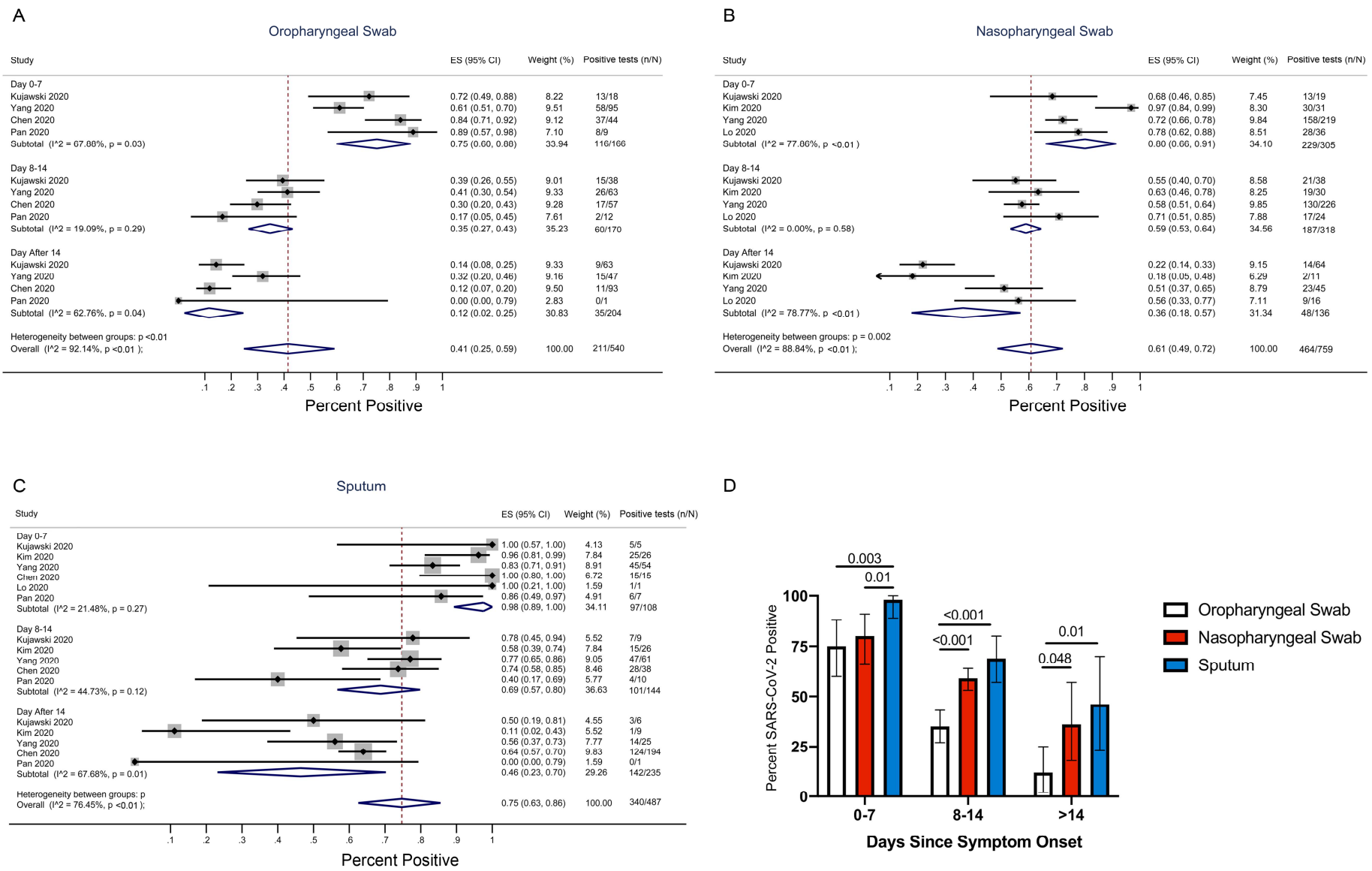
**Table 1. Studies included in the Meta-Analysis.**

	Country	Age Median (Range)	Sex (M %)	Patients (N)	Total samples
Kujawski et al (2020) <sup>10</sup>	US	53 (2-68)	68	12	219
Kim et al (2020) <sup>6</sup>	Korea	40 (20-73)	54	28	133
Lin et al (2020) <sup>11</sup>	China	57 (38-84)	52	52	88
Yu et al (2020) <sup>5</sup>	China	40 (32-63)	50	76	267
Wang et al (2020) <sup>2</sup>	China	44 (5-67)	68	205	525
Yang et al (2020) <sup>12</sup>	China	52 (2-86)	60	213	864
Chan et al (2020) <sup>1</sup>	China	63 (10-66)	50	5	15
Chen et al (2020) <sup>13</sup>	China	36 (2-65)	64	22	440
Lo et al (2020) <sup>14</sup>	China	54 (27-64)	30	10	85
Wu et al (2020) <sup>7</sup>	China	67 ± 9 <sup>*</sup>	55	132	776
Pan et al (2020) <sup>15</sup>	China	..	..	2	40

\* Mean age ± SD



**Figure 2.** Rates of SARS-CoV-2 detection by three methods of sampling. Forest plots of detection rates for oropharyngeal swabs (A), nasopharyngeal swabs (B), and sputum (C) and in a pooled analysis (D). The error bars in figure 2 D are 95% Confidence Interval (95% CI).



**Figure 3.** Rates of SARS-CoV-2 detection by three methods of sampling and time since symptom onset. Forest plots of detection rates for oropharyngeal swabs (A), nasopharyngeal swabs (B), and sputum (C) are categorized by days since symptom onset (0-7, 8-14, >14 days) and in a pooled analysis (D). The error bars in figure 2 D are 95% Confidence Interval (95% CI).