

COVID-19 Epidemic Forecast in Different States of India using SIR Model

Mukesh Jakhar¹, P. K. Ahluwalia² and Ashok Kumar^{1*}

¹*Department of Physics, School of Basic and applied Sciences, Central University of Punjab,*

Bathinda, India 151001

²*Department of Physics, Himachal Pradesh University, Shimla, India 171005*

(May 14, 2020)

*Email: ashokphy@cup.edu.in

Abstract: The epidemiological data up to 12th May 2020 for India and its 24 states has been used to predict COVID-19 outbreak within classical SIR (Susceptible-Infected-Recovered) model. The basic reproduction number R_0 of India is calculated to be 1.15, whereas for various states it ranges from 1.03 in Uttarakhand to 7.92 in Bihar. The statistical parameters for most of the states indicates the high significance of the predicted results. It is estimated that the epidemic curve flattening in India will start from the first week of July and epidemic may end in the third week of October with final epidemic size $\sim 1,75,000$. The epidemic in Kerala is in final phase and is expected to end by first week of June. Among Indian states, Maharashtra is severely affected where the ending phase of epidemic may occur in the second week of September with epidemic size of $\sim 55,000$. The model indicates that the fast growth of infection in Punjab is from 27th April 2020 to 2nd June 2020, thereafter, curve flattening will start and the epidemic is expected to finished by the first week of July with the estimated number of ~ 3300 infected people. The epidemic size of COVID-19 outbreak in Delhi, West Bengal, Gujrat, Tamil Nadu and Odisha can reach as large as 24,000, 18,000, 16,000, 13,000 and 11,000, respectively, however, these estimations may be invalid if large fluctuation of data occurs in coming days.

Introduction

COVID-19 (Coronavirus disease 2019) is a disease caused by a novel virus called SARS-CoV-2 (severe acute respiratory syndrome coronavirus 2) which has spread over more than 200 countries infecting more than 40 lakh peoples worldwide (as on May 12,2020) [1]. The outbreak of this disease was announced by World Health Organization (WHO) after one month from the reporting of first case on Dec. 31, 2019, in Wuhan, China and later as a pandemic on March 11, 2020 [2]. India is also in the thick of this highly infectious viral disease with over 70,000 people caught in its tentacles (as on May 12,2020) [3].

The symptoms of COVID-19 range from mild to severe, which are indicated by mainly fever, cough, and respiratory distress. The two most important modes of transmission of corona virus are respiratory droplets and contact transmission (contaminated hands) with an incubation period 2-14 days [4-5]. The virus spread rapidly around the world and several large-size clusters of the spread have been observed worldwide including outbreaks in China, USA, Spain, Russia, UK, Italy and India. Despite strong interventions including country wide lockdowns by governments of many countries, this pandemic is nowhere near full control in most of the countries except China and South Korea.

In the absence of a COVID 19 vaccine at the moment the only accepted way to attenuate the growth is to practice good hand hygiene, using masks compulsorily and social distancing. In an effort to contain this epidemic's spread in India, the Indian Prime Minister also announced a nation-wide lockdown from the midnight of 24th March 2020 and subsequent series of lockdowns to prevent spreading of the virus from human-to-human transmission. Since these measures have brought huge pressure on economy, it is not only important to contain the spread

of the Coronavirus but also to have quantitative estimates of the spread or its abatement to estimate its impact and to plan economic and health policies to reduce the shock on economy.

Indian Government has been proactive since the end of January 2020, when the first case of infected person was detected in Kerala. Indian government had taken preventive measures well in time by announcing nationwide lockdown on 22nd March 2020 and its 4th phase, Lockdown 4.0, is going to start from 18th of May 2020. Detailed measures [3] such as screening of passengers at airport, restricting public gatherings, suspension of transport including flights, trains and buses, increasing quarantine facility, dedicated COVID-19 hospitals, increasing sample testing etc. were taken by the government during Lockdown period. To revive the economy, Prime minister Modi has announced a package of Rs. 20 lakh crores (20 trillion) on 12th May 2020.

Many studies have been recently reported by researchers to understand the dynamics of this pandemic [6-11]. The forecast of COVID-19 in the context of India has been investigated by many researchers using mathematical [12-16] and epidemiological [17-19] models but have limited studies [20-21] of individual states. Looking at the demographical and geographical diversity in India, a separate state-wise study of COVID-19 epidemic is the need of the hour.

In this paper, we present a study of epidemiological Susceptible-Infected-Recovered (SIR) model [22] for the spread of COVID-19 in various states of India. It is worth mentioning here that the forecasts using this model are as good as the quality of data available and, therefore, the progress of the spread of the virus may also affect the predictions [23].

Methods

The SIR model is one of the simplest compartmental models which consists of three-compartment levels: Susceptible (S), Infectious (I) and Removed (R)[22]. S represents those peoples who have no immunity to the disease but they are not infectious and can be represented by the entire population, I are those who have already contracted the disease, and the R represents the recovered and diseased peoples. Also, it assumes that within the outbreak period, no significance population change takes place (e.g., through new births, deaths, migration etc.) and $N = S + I + R = \text{Constant}$. The SIR model can be expressed by the following set of ordinary differential equations [24]:

$$\frac{dS}{dt} = -\frac{\beta IS}{N} \quad (1)$$

$$\frac{dI}{dt} = -\frac{\beta IS}{N} - \gamma I \quad (2)$$

$$\frac{dR}{dt} = -\gamma I \quad (3)$$

Where, t is time, $S(t)$ is the number of susceptible persons at time t , $I = I(t)$ is the number of infected persons at time t , $R(t)$ is the number of recovered persons in time t , β is the contact rate, and $1/\gamma$ is the average infectious period. In particular, the model with three equations can be reduced to one function about the total infection count ($C = I + R$)[25]. In our study, the epidemiological data has been collected from official website of Ministry of Health and Family Welfare, Government of India (<https://www.mohfw.gov.in>) till 12th May 2020 from the date of first case detected in each state. The simulations of SIR model are performed using *fminsearch* and *ode45 functions of MATLAB* as implemented by M. Batista in references [26-27].

Results and Discussion

The cumulative number of infected peoples in the states under consideration varies from ~50 to ~25,000. Maharashtra has recorded highest number of infected peoples (24427) till 12th May 2020, followed by 8904 in Gujrat, 8718 in Tamil Nadu and 7639 in Delhi. The states like Rajasthan, Madhya Pradesh, Uttar Pradesh, West Bengal, Punjab and Andhra Pradesh have number of cases in the range of 1000-5000 on 12th May 2020 whereas rest of the states have less than 1000 cases. Kerala is the only state in India, which seems to be in total control over COVID-19 epidemic.

The results of the calculation are shown in [Table 1](#) and in [Figures1-5](#). We consider different states in descending order of the number of cumulative infected cases. For each state we have calculated R_0 (basic reproduction number), β (Average contact frequency), γ (average removal frequency), $C_{\{end\}}$ (epidemic size), and $S_{\{end\}}$ (final number of susceptible individuals left) with the four periods of infection i.e. (i) start of acceleration, (ii) start of steady growth, (iii) start of ending phase and (iv) end of epidemic (1 case). In the figure for each state, we present two graphs: one is total number of novel Corona cases per day and second is the different epidemic phases i.e. initial exponential growth, fast growth, asymptotic slow growth and curve flattening. The statistical parameters such as coefficient of determination (R^2), adjusted R^2 , p-value, root mean square error (RMSE) and F-statistics vs zero model for each state are listed in [Table 2](#). The coefficient of determination (R^2) and p-value of the model for most of the states are close to 1 and 0, respectively, indicating high statistical significance of the results.

According to our prediction for India from data up to 12th May 2020, the curve flattening of epidemic will start from first week of July and the epidemic may end by the third week of

October (Figure 1). The calculated value of R_0 is 1.15 and the epidemic size (number of infected peoples) is estimated to be 1,76,126. The coefficient of determination, $R^2=0.998$, and p-value close to zero indicates the statistical significance of our predicted results from epidemiological data of India. Note that number of cumulative cases up to 1st May 2020 in India was predicted to be ~36,000 in recent study [21]. Also, the value of R_0 is calculated as 1.50 [17] and 2.02 [27] in recent studies.

Among all the Indian states, Maharashtra is severely affected by COVID-19 epidemic. The SIR model indicates that the acceleration period of infection is from 25-Apr-2020 to 26-June-2020. The ending phase of epidemic may occur in the last week of June and it may be finished by the second week of September with epidemic size of 55,631 (Figure 2). The calculated value of R_0 is 1.11 with R^2 and p-value close to 1 and 0, respectively. Note that number of cumulative cases up to 1st May 2020 for Maharashtra was predicted to be ~9,800 in recent study [21].

Another important state is Punjab, where according to media reports over 90,000 NRI returned to Punjab from abroad in the first quarter of the year 2020 [28]. The model indicates that the fast growth of infection is from 27th April 2020 to 2nd June 2020, thereafter, curve flattening will start and the epidemic is expected to finished by the first week of July (Figure 3). The estimated number of infected peoples is 3237. The calculated value of R_0 is 1.28 which is little higher than country (1.15). The statistical parameter R^2 is calculated to be 0.964 and p-value is close to zero. Our study suggests that Punjab has relatively good control over the epidemic which may be due to the strict prevention measures taken during curfew imposed by Punjab government since 22nd March 2020 in whole state.

The predicted data for other states is tabulated in [Table 1](#) and plotted in [Figures 2-5](#). The epidemic in Kerala is in its final phase and is expected to end by first week of June. Other states such as Telangana and Jharkhand are predicted to get rid of COVID-19 by the end of June. The states like Delhi, West Bengal, Odisha have to wait for the end of this epidemic up to mid-October, end of November and first week of December, respectively. The epidemic size of COVID-19 outbreak in Delhi, West Bengal, Gujrat, Tamil Nadu and Odisha can reach as large as 23,635, 17,522, 16,409, 12,555 and 10,921, respectively. The R_0 for various states varies from 1.03 in Uttarakhand to 7.92 in Bihar. Note that in recent study, the daily infection rate (DIR) of COVID-19 for Maharashtra, Delhi Gujrat, Madhya Pradesh, Andhra Pradesh, Uttar Pradesh and West Bengal has shown exponential growth [\[20\]](#).

The calculated value of R^2 for Assam (0.506) and Himachal Pradesh (0.868) is lower than the desirable value. This indicates a small correlation between the predicted and actual numbers of the epidemic, which is due to the small number and large fluctuation of epidemiological data. The epidemic in these states were expected to end in April, however, increased number of cases have been reported in last few days ([Figure 5](#)), which are attributed to the interstate movement of significant number of migrants in these states [\[29\]](#). Considering the strict prevention measures, this rise in cases is momentarily and these states are expected to mitigate the epidemic in coming days.

It is worth discussing on the number of samples tested for COVID-19 cases around the country. As on 12 May 2020, a total number of 17,59,589 samples have been tested throughout the country out of which 74,329 samples were tested positive which comes out to be 4.22% of total collected samples [\[30\]](#). The % of positive cases in Karnataka, Odisha, Jharkhand, Uttarakhand, Himachal Pradesh and Assam is < 1%. The total confirmed cases, total samples

tested and % of positive cases are listed in [Table 3](#). In Maharashtra, percentage of positive cases is highest with 10.98% followed by Gujrat (7.45%), Delhi (7.19%) and Madhya Pradesh (4.92%). The greater number of testing in these states may be required in coming days and the predicted results for these states may change in near future.

Conclusions

In summary, classical SIR epidemiological model has been used to predict the COVID-19 outbreak in India and its different states. The value of R_0 is calculated to be 1.15 for Indian population. Among Indian states, Maharashtra is severely affected where the ending phase of epidemic may occur in the last week of June and it may be ended by the second week of September. The model indicates that the curve flattening in Punjab may start in the first week of June up to first week of July. The states like Delhi, West Bengal, Odisha have to wait for the end of this epidemic up to mid-October, end of November and first week of December, respectively. These predictions are based on the assumptions that the current preventive efforts will be continue. In Maharashtra, percentage of positive cases with respect to total sample collected is highest with 10.98% followed by Gujrat (7.45%), Delhi (7.19%) and Madhya Pradesh (4.92%), which are higher than the percentage of country (4.22%).

Table 1. The various parameters calculated using SIR model. R_0 , β , γ , $C_{(end)}$ and $S_{(end)}$ represent basic reproduction number, average contact frequency, average removal frequency, epidemic size and final number of susceptible individuals left.

India and State	R_0	β	γ	$C_{(end)}$	$S_{(end)}$	Outbreak (year-2020)	Start of acceleration (year-2020)	Start of steady growth (year-2020)	Start of ending phase (year-2020)	End of epidemic (1 case) (year-2020)
India	1.15	0.66	0.573	176126	523659	03-Mar	23-Apr	10-Jun	04-Jul	16-Oct
Maharashtra	1.11	1.008	0.908	55631	234823	11-Mar	25-Apr	05-Jun	26-Jun	09-Sep
Gujrat	1.58	0.282	0.179	16409	9558	20-Mar	19-Apr	01-Jun	22-Jun	13-Sep
Tamil Nadu	3.1	0.371	0.12	12555	701	18-Mar	03-May	20-May	29-May	29-Jul
Delhi	1.19	0.486	0.409	23635	55146	03-Mar	26-Apr	19-Jun	16-Jul	15-Oct
Rajasthan	1.72	0.269	0.156	4900	2080	03-Mar	09-Apr	19-May	08-Jun	13-Aug
Madhya Pradesh	1.68	0.347	0.206	4053	1866	22-Mar	09-Apr	11-May	27-May	16-Jul
Uttar Pradesh	1.77	0.273	0.154	4531	1748	04-Mar	11-Apr	19-May	07-Jun	10-Aug
West Bengal	1.96	0.18	0.092	17522	4751	19-Mar	11-May	01-Jul	26-Jul	24-Nov
Andhra Pradesh	1.12	0.979	0.874	2500	9462	19-Mar	09-Apr	17-May	05-Jun	15-Jul
Punjab	1.28	0.797	0.621	3237	4708	18-Mar	27-Apr	21-May	02-Jun	01-Jul
Telangana	2.44	0.298	0.122	1180	153	14-Mar	31-Mar	26-Apr	09-May	22-Jun
Jammu and Kashmir	1.41	0.275	0.195	1330	1211	13-Mar	06-Apr	28-May	24-Jun	19-Aug
Karnataka	1.09	0.789	0.723	1216	6031	12-Mar	03-Apr	30-May	28-Jun	16-Aug
Bihar	7.92	0.18	0.023	823	0	23-Mar	18-Apr	15-May	28-May	17-Jul
Kerala	2.55	0.271	0.106	494	55	05-Mar	19-Mar	16-Apr	30-Apr	06-Jun
Odisha	1.74	0.19	0.109	10921	4449	21-Mar	28-May	22-Jul	19-Aug	05-Dec
Jharkhand	1.86	0.298	0.16	191	61	02-Apr	14-Apr	16-May	31-May	22-Jun
Tripura	1.87	2.101	1.123	148	47	10-Apr	06-May	11-May	13-May	16-May
Uttarakhand	1.03	2.264	2.204	71	1071	20-Mar	24-Mar	06-May	27-May	04-Jun
Assam	3.44	0.969	0.281	41	1	01-Apr	03-Apr	09-Apr	12-Apr	14-Apr
Himachal Pradesh	3.23	0.696	0.215	36	2	22-Mar	04-Apr	13-Apr	18-Apr	20-Apr
Chhattisgarh	1.23	0.259	0.211	83	132	24-Mar	26-Mar	25-May	24-Jun	14-Jul

Table2: Statistics of SIR model for India and its various states.

India and State	Number of observations	Degrees of freedom	RMSE	R ²	Adjusted R-Squared	F-statistics vs. zero model	p-value
India	71	67	924	0.998	0.998	10131.5	7.90173e-88
Maharashtra	63	59	243	0.999	0.999	14329.8	2.14263e-84
Gujrat	54	50	277	0.989	0.989	1610.48	1.03819e-49
Tamil Nadu	56	52	1084	0.703	0.679	51.9686	1.14244e-15
Delhi	71	67	147	0.995	0.995	4286.36	1.81163e-76
Rajasthan	71	67	79	0.996	0.996	5611.5	2.27489e-80
Madhya Pradesh	52	48	105	0.933	0.930	703.996	5.5109e-34
Uttar Pradesh	70	66	45	0.998	0.998	14179.8	1.22704e-92
West Bengal	55	51	40	0.995	0.995	3552.06	3.52659e-59
Andhra Pradesh	55	51	35	0.998	0.997	6742.15	2.99025e-66
Punjab	56	52	108	0.964	0.961	506.256	1.88912e-38
Telangana	60	56	34	0.995	0.994	3415.41	2.33263e-63
Jammu and Kashmir	61	57	29	0.99	0.99	1977.92	1.4714e-57
Karnataka	62	58	19	0.995	0.994	3599.05	7.83511e-66
Bihar	51	47	26	0.987	0.986	1228.3	1.24776e-44
Kerala	69	65	22	0.987	0.987	1635.79	3.90792e-61
Odisha	53	49	21	0.956	0.952	370.222	1.19745e-33
Jharkhand	41	37	7	0.985	0.984	827.057	6.07144e-34
Tripura	33	29	12	0.935	0.926	113.566	3.96801e-16
Uttarakhand	53	49	4	0.975	0.973	627.915	1.16588e-39
Assam	42	38	10	0.506	0.453	19.5462	7.88278e-08
Himachal Pradesh	52	48	7	0.868	0.856	100.349	1.09406e-20
Chhattisgarh	50	46	5	0.925	0.918	191.294	5.55392e-26

Table 3: Number of confirmed cases, number of samples tested and % of positive cases in India and various states as on 12th May 2020 [30].

India and State	Confirmed Cases	Samples Tested	% of Positive Cases from Tested Samples
India	74329	1759579	4.224249
Maharashtra	24427	222284	10.9891
Gujrat	8904	119536	7.448802
Tamil Nadu	8718	266687	3.269001
Delhi	7639	106109	7.199201
Rajasthan	4126	185610	2.222941
Madhya Pradesh	3986	80885	4.927984
Uttar Pradesh	3664	140166	2.614043
West Bengal	2173	52622	4.129452
Andhra Pradesh	2089	191874	1.088735
Punjab	1914	43999	4.350099
Telangana	1326	Not available	Not available
Jammu and Kashmir	934	53726	1.738451
Karnataka	925	116533	0.793767
Bihar	879	37430	2.348384
Haryana	780	62377	1.250461
Kerala	525	38547	1.361974
Odisha	437	66057	0.66155
Jharkhand	172	22815	0.75389
Tripura	153	10344	1.479118
Uttarakhand	69	10471	0.658963
Assam	65	21791	0.298288
Himachal Pradesh	66	12224	0.539921
Chhattisgarh	59	27339	0.215809

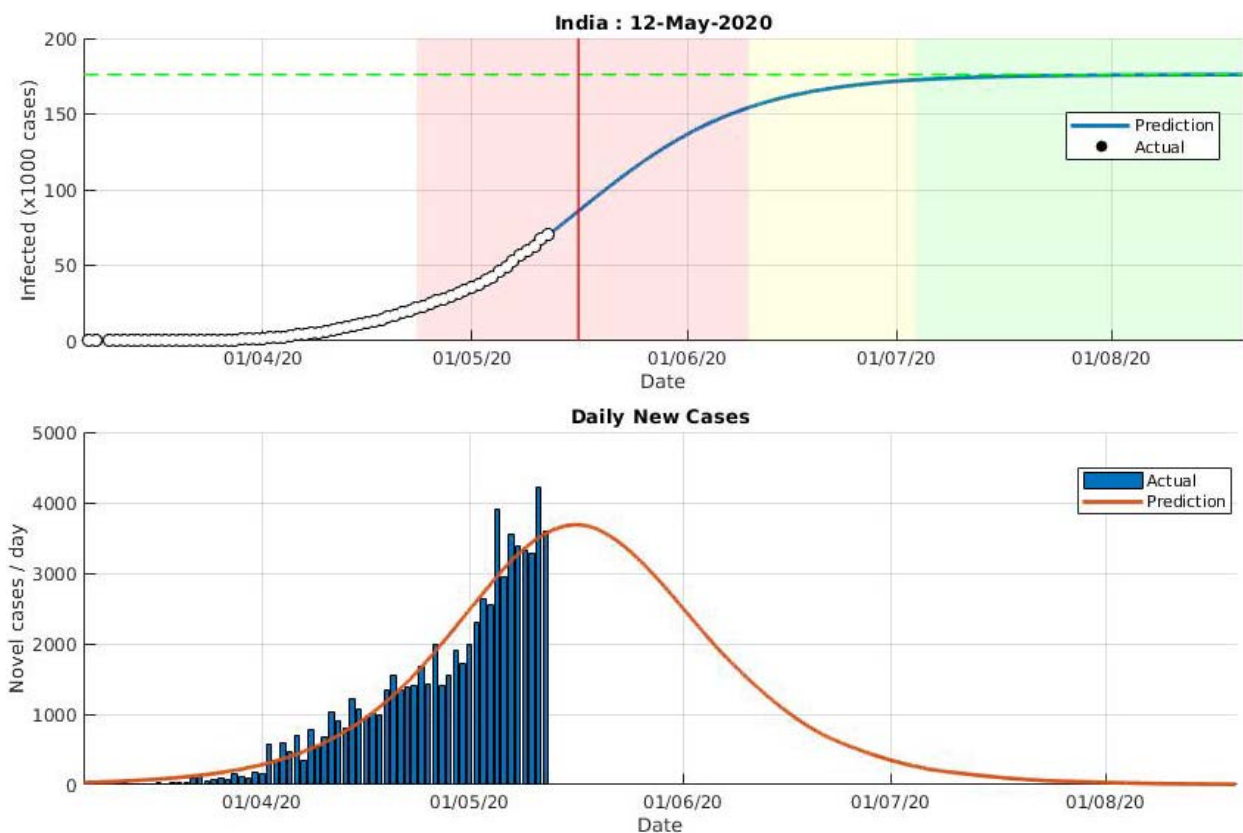


Figure 1: Predictions using SIR model for India using data upto 12th May 2020. The different epidemic phases are shown with white, red, yellow and green colors which represent initial exponential growth, fast growth (with positive and negative phase separated by red vertical line), asymptotic slow growth and curve flattening, respectively.

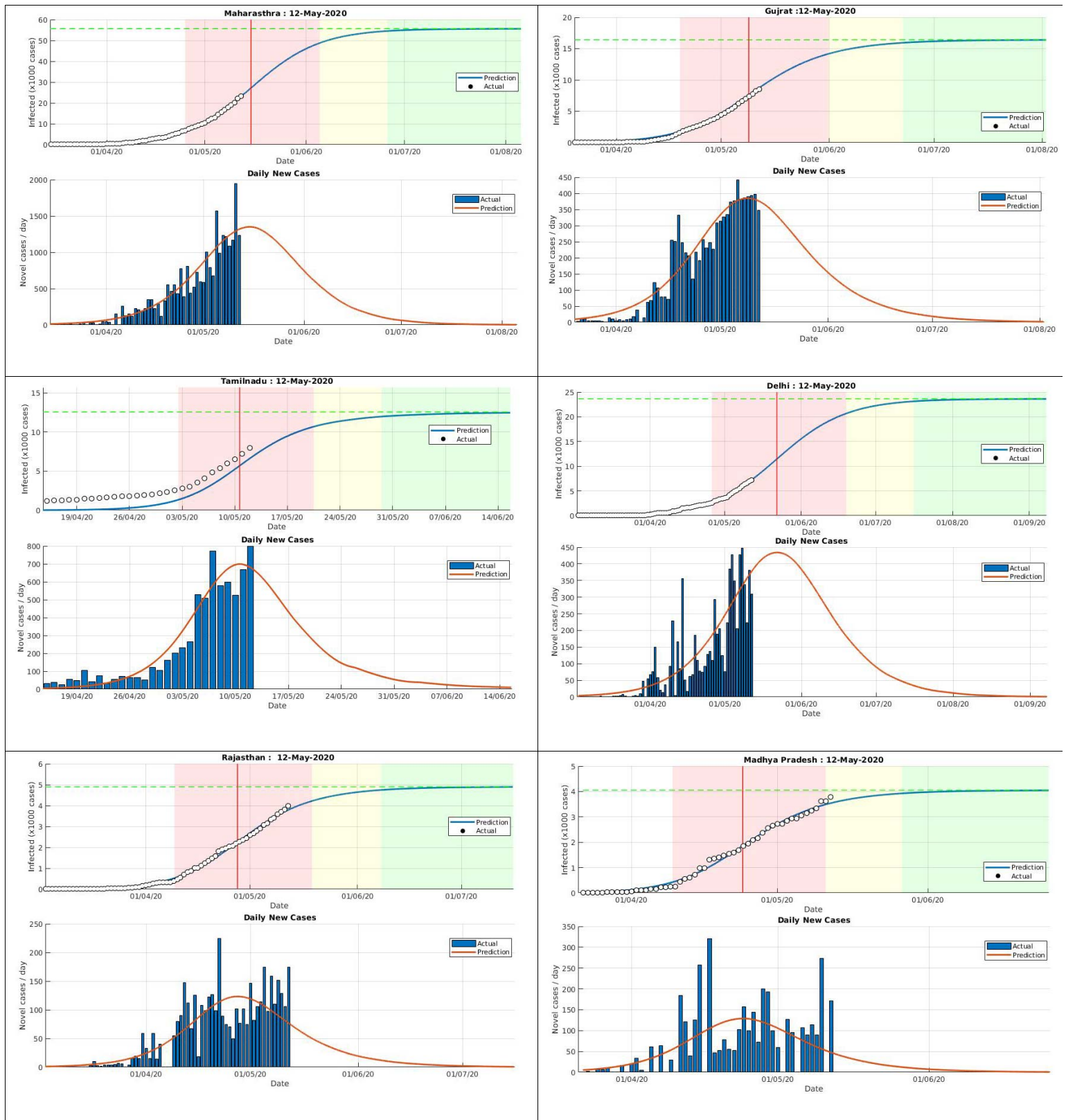


Figure 2: Predictions for various states (Maharashtra, Gujrat, Tamil Nadu, Delhi, Rajsthan and Madhya Pradesh) using SIR model. The different epidemic phases are shown with white, red, yellow and green colors which represent initial exponential growth, fast growth (with positive and negative phase separated by red vertical line), asymptotic slow growth and curve flattening, respectively.

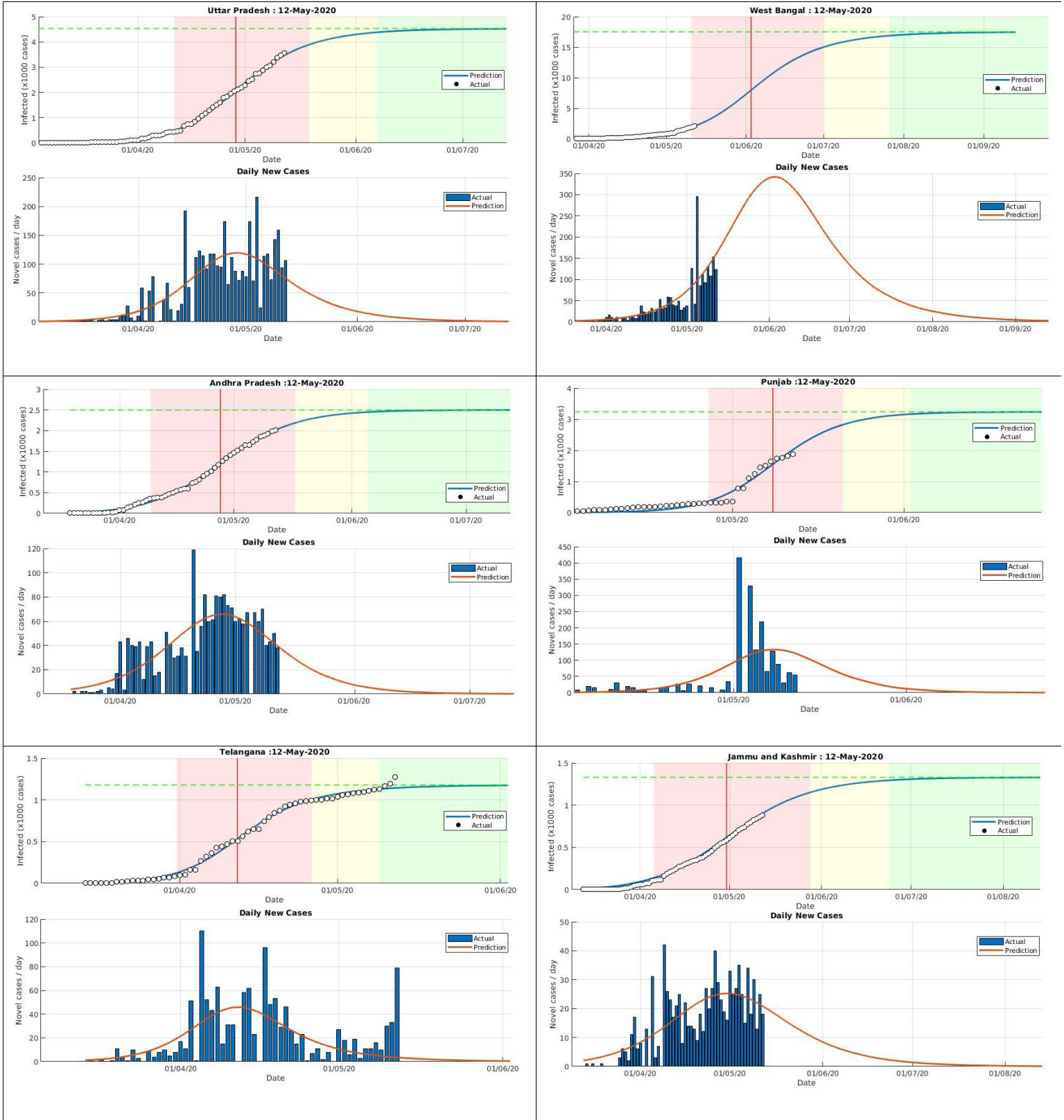


Figure 3: Predictions for various states (Uttar Pradesh, West Bengal, Andhra Pradesh, Punjab, Telangana, Jammu and Kashmir) using SIR model. The different epidemic phases are shown with white, red, yellow and green colors which represent initial exponential growth, fast growth (with positive and negative phase separated by red vertical line), asymptotic slow growth and curve flattening, respectively.

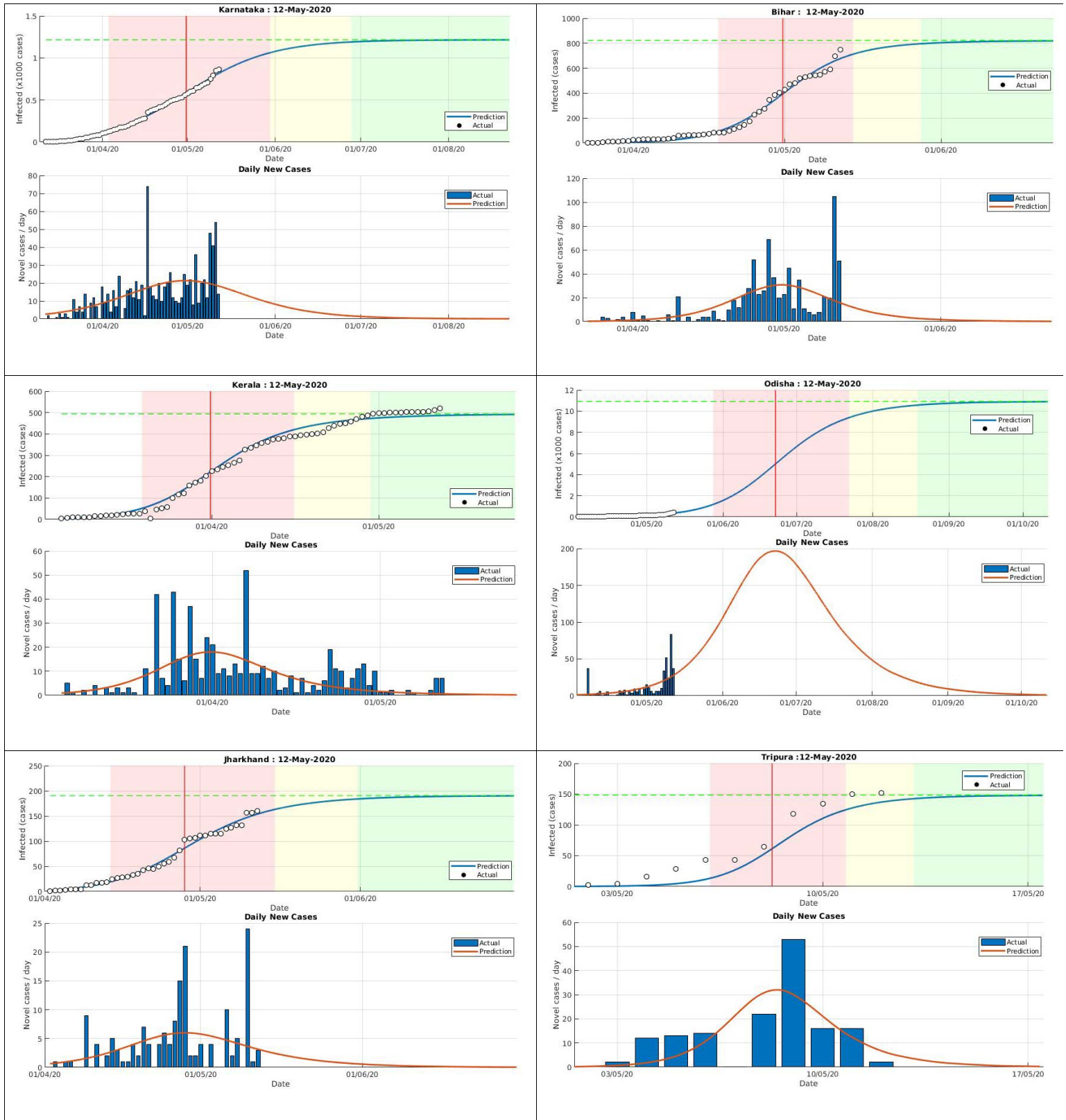


Figure 4: Predictions for various states (Karnatks, Bihar, Kerala, Odisha, Jharkhand and Tripura) using SIR model. The different epidemic phases are shown with white, red, yellow and green colors which represent initial exponential growth, fast growth (with positive and negative phase separated by red vertical line), asymptotic slow growth and curve flattening, respectively.

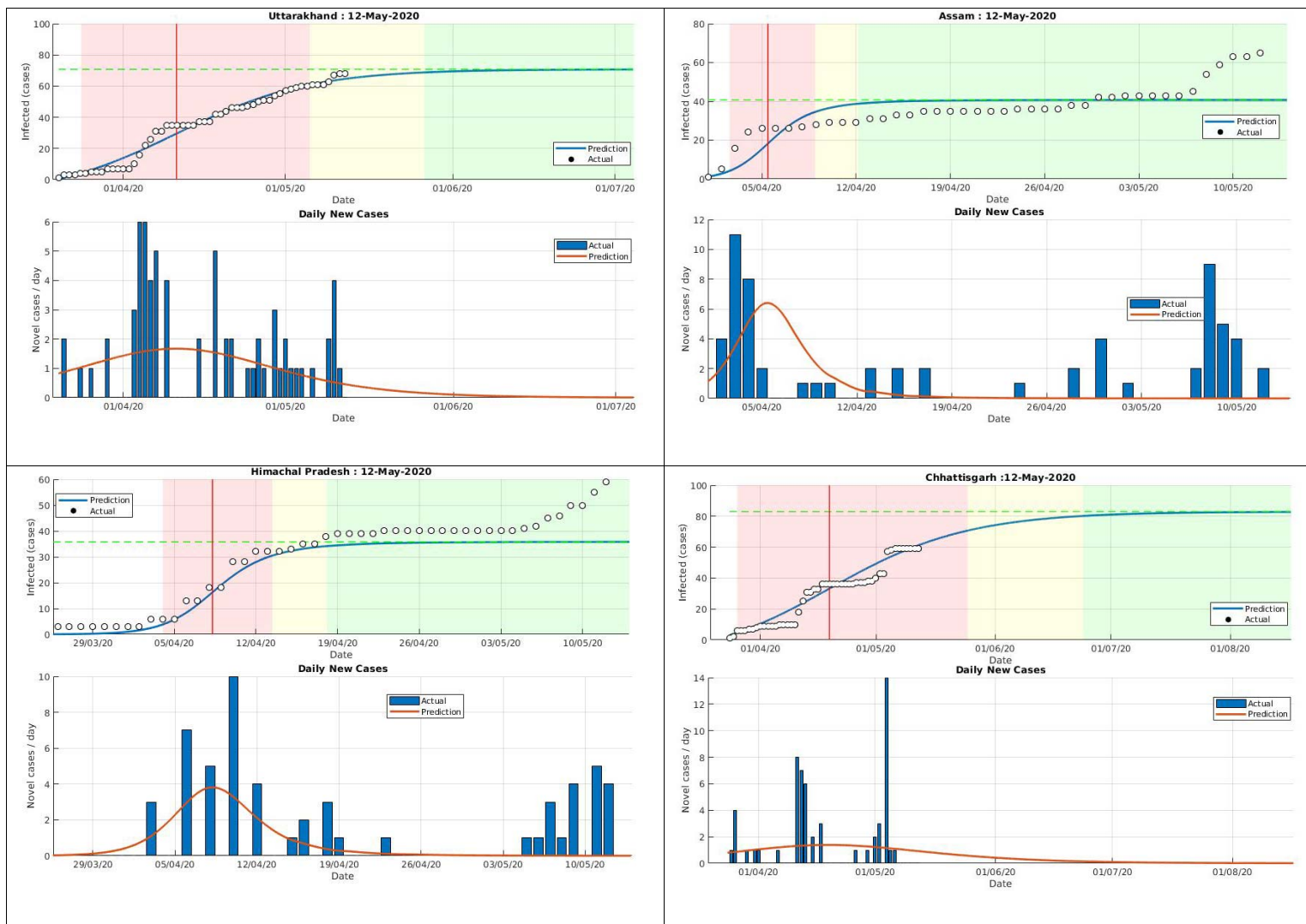


Figure 5: Predictions for various states (Uttarakhand Assam, Himachal Pradesh and Chhattisgarh) using SIR model. The different epidemic phases are shown with white, red, yellow and green colors which represent initial exponential growth, fast growth (with positive and negative phase separated by red vertical line), asymptotic slow growth and curve flattening, respectively.

Acknowledgement

We acknowledge Prof. Milan Batista, University of Ljubljana, Slovenia for helpful discussion regarding technicalities of the method used in this study.

References

1. Situation report-113: Available at <https://www.who.int/docs/default-source/coronaviruse/situation-reports/>.

2. W.H. O, *Statement on the second meeting of the International Health Regulations (2005) Emergency Committee regarding the outbreak of novel coronavirus (2019-nCoV)*. 2020.
3. <https://www.mohfw.gov.in/dashboard/index.php> . Accessed on May 12,2020
4. T. Singhal, *A review of coronavirus disease-2019 (COVID-19)*. The Indian Journal of Pediatrics, 2020: p. 1-6.
5. J.F.-W Chan et al., *A familial cluster of pneumonia associated with the 2019 novel coronavirus indicating person-to-person transmission: a study of a family cluster*. The Lancet, 2020. **395**(10223): p. 514-523.
6. M. A. A. Al-qaness et. al., Optimization Method for Forecasting Confirmed Cases of COVID-19 in China, *J. Clin. Med*, **9**, 674 (2020)
7. S. Ansumal et. al., A Very Flat Peak: Exponential growth phase of COVID-19 is mostly followed by a prolonged linear growth phase, not an immediate saturation, medRxiv 2020:<https://doi.org/10.1101/2020.04.07.20055772>
8. S. K. Bandyopadhyay et. al., Machine Learning Approach for Confirmation of COVID-19 Cases: Positive, Negative, Death and Release, medRxiv 2020:<https://doi.org/10.1101/2020.03.25.20043505>
9. C. P. Vyasarayani et. al., New approximations, and policy implications, from a delayed dynamic model of a fast pandemic, arXiv preprint 2020: *arXiv:2004.03878v1 [q-bio.PE]*
10. K. Biswas et. al., Covid-19 spread: Reproduction of data and prediction using a SIR model on Euclidean network, arXiv preprint 2020: *arXiv:2003.07063v1 [physics.soc-ph]*
11. M. Chinazziet al., The effect of travel restrictions on the spread of the 2019 novel coronavirus (COVID-19) outbreak, *Science*, DOI: 10.1126/science.aba9757 (2020).
12. P. Kumar et. al., Forecasting COVID-19 impact in India using pandemic waves Nonlinear

- Growth Models, medRxiv 2020: <https://doi.org/10.1101/2020.03.30.20047803>
13. M. K. Prakash et. al., A minimal and adaptive prediction strategy for critical resource planning in a pandemic, medRxiv 2020: <https://doi.org/10.1101/2020.04.08.20057414>
 14. S. Mondal et. al., Possibilities of exponential or Sigmoid growth of Covid19 data in different states of India, medRxiv 2020: <https://doi.org/10.1101/2020.04.10.20060442>
 15. J. S. Virk et. al., Recent update on COVID-19 in India: Is locking down the country enough? medRxiv 2020: <https://doi.org/10.1101/2020.04.06.20053124>
 16. R. Singh et. al., Age-structured impact of social distancing on the COVID-19 epidemic in India, arXiv preprint 2020: *arXiv:2003.12055v1 [q-bio.PE]*
 17. R. Ranjan, Predictions for COVID-19 outbreak in India using Epidemiological models, medRxiv 2020: <https://doi.org/10.1101/2020.04.02.20051466>
 18. S. Mandal et. al., Prudent public health intervention strategies to control the coronavirus disease 2019 transmission in India: A mathematical model-based approach, *Indian J. Med. Res* (2020); DOI: *10.4103/ijmr.IJMR_504_20*
 19. T. Sardar et. al., Assessment of 21 Days Lockdown Effect in Some States and Overall India: A Predictive Mathematical Study on COVID-19 Outbreak, arXiv preprint 2020: *arXiv:2004.03487v1 [q-bio.PE]*
 20. P. Ghosh et. al., COVID-19 in India: State-wise Analysis and Prediction, medRxiv 2020: <https://doi.org/10.1101/2020.04.24.20077792>
 21. N. Poonia and S. Azad, Short-term forecasts of COVID-19 spread across Indian states until 1 May 2020, <https://arxiv.org/abs/2004.13538>
 22. H. W. Hethcote, *The mathematics of infectious diseases*. SIAM review, 2000. **42**(4): p. 599-653.

23. D. Guerrero, *Spread of Covid-19: a Study Case of Honduras, Forecasting with Logistic Model and SIR Model*, https://www.upnfm.edu.hn/phocadownload/Covid_19_Danny_Guerrero_Elsarticle.pdf
24. D. Smith and L. Moore, *The SIR Model for Spread of Disease: The Differential Equation Model (2004)*. <https://www.maa.org/press/periodicals/loci/joma/the-sir-model-for-spread-of-disease-the-differential-equation-model>
25. M. Batista, *Estimation of the final size of the COVID-19 epidemic*. medRxiv 2020: <https://doi.org/10.1101/2020.02.16.20023606>
26. M. Batista (2020). fitVirusCOVID19 (<https://www.mathworks.com/matlabcentral/fileexchange/74658-fitviruscovid19>), MATLAB Central File Exchange. Retrieved May 12, 2020.
27. G. Pandey et. al., SEIR and Regression Model based COVID-19 outbreak predictions in India, <https://arxiv.org/ftp/arxiv/papers/2004/2004.00958.pdf>
28. <https://www.hindustantimes.com/india-news/if-there-are-more-cases-punjab-seeks-centre-s-help-on-covid-19-as-90-000-nris-return/story-MDuL8rhvZaFIICyMUNwhVP.html>
29. A. Maji, M.B. Sushma and T. Choudhari, Implication of Inter-State Movement of Migrant Workers during COVID 19 Lockdown using Modified SEIR Model, <https://arxiv.org/abs/2005.04424>
30. <https://www.covid19india.org/>