

Anti-Spike, anti-Nucleocapsid and neutralizing antibodies in SARS-CoV-2 hospitalized patients and asymptomatic carriers

Etienne Brochot^{1,2,*}, Baptiste Demey^{1,2}, Antoine Touzé³, Sandrine Belouzard⁴, Jean Dubuisson⁴, Jean-Luc Schmit^{1,2}, Gilles Duverlie^{1,2}, Catherine Francois^{1,2}, Sandrine Castelain^{1,2}, Francois Helle^{2,*}

¹ Department of Virology, Amiens University Medical Center, Amiens, France.

² AGIR Research Unit, UR UPJV 4294, Jules Verne University of Picardie, Amiens, France.

³ ISP1282 INRA University of Tours, Tours, France.

⁴ Université Lille, CNRS, INSERM, CHU Lille, Institut Pasteur de Lille, U1019-UMR 8204-CIIL-Center for Infection and Immunity of Lille, F-59000 Lille, France.

Corresponding authors :

Dr Etienne Brochot

Laboratoire de Virologie

Centre de Biologie Humaine - CHU Amiens

F-80054 Amiens cedex 1, France

Phone: +33-322-080-764

Fax: +33-322-087-009

E-mail: etienne.brochot@u-picardie.fr

Dr Francois Helle

UR-UPJV 4294, Agents Infectieux, Résistance et Chimiothérapie

Centre Universitaire de Recherche en Santé,

30 Avenue de la Croix Jourdain,

80000 Amiens, France

Phone: +33-322-825-351

E-mail: francois.helle@u-picardie.fr

32 **Abstract**

33

34 Using longitudinal plasma samples from thirty COVID-19 patients, we observed that virus-specific
35 antibodies are detectable in 100% of patients two weeks after symptom onset. We also show that
36 these patients produced variable levels of neutralizing antibodies which reached a plateau two weeks
37 after symptom onset and then declined in the majority of patients. Furthermore, we report that
38 neutralizing antibodies were undetectable in 56% (14/25) of asymptomatic carriers.

39

40 **Keywords**

41 SARS-CoV-2; COVID-19, coronavirus, spike, nucleocapsid, RBD, neutralizing antibodies

42

43

44 The Severe Acute Respiratory Syndrome Coronavirus 2 (SARS-CoV-2) has recently emerged
45 and caused a human pandemic of coronavirus disease 2019 (COVID-19). Among the four SARS-CoV-
46 2 structural proteins, the Spike (S) and the Nucleocapsid (N) proteins are the main immunogens¹. The
47 S protein consists of two subunits, S1 which contains the receptor-binding domain (RBD) and S2. The
48 kinetics of antibody detection is essential for the selection of commercial serological assays and the
49 interpretation of the results. Some manufacturers have decided to target the S1 and/or the S2
50 whereas others chose the RBD or the N protein. Furthermore, the neutralizing antibody (NAb)
51 response against the SARS-CoV-2 remains poorly understood and it is still unknown whether cured
52 patients are protected against new infection².

53 In order to accurately assess the time of seroconversion, we used 151 samples from 30
54 patients hospitalized at the Amiens University Hospital for a COVID-19 (see Supplementary Table 1)
55 to monitor the kinetics of detection of anti-S1, anti-S2, anti-RBD and anti-N antibodies with in-house
56 ELISAs. We observed that antibodies targeting the N protein and the RBD were the earliest to be
57 detected (Fig. 1a). Thirteen days post-symptom onset, 100% of patients had detectable antibodies to
58 both proteins. A similar profile was observed for anti-S2 antibodies but with a mean time lag of two
59 days. Antibodies to the S1 subunit were the last to be detected and remained undetectable for two
60 patients. High levels of anti-N and anti-RBD antibodies were detected in the large majority of samples
61 obtained fourteen days post-symptom onset whereas very heterogeneous levels of anti-S1 antibodies
62 were found in the same samples (Fig. 1b). The positive correlations between each ELISA are shown
63 in Extended Data Fig. 1. Significant differences were observed between intensive care versus non-
64 intensive care patients for anti-S1, anti-S2 and anti-N antibody levels, from eight days post-symptom
65 onset (Extended Data Fig. 2a). A slight difference was observed for anti-N antibody levels according to
66 the sex, from fourteen days post-symptom onset (Extended Data Fig. 2b). In contrast, no significant
67 difference was observed according to age, from fourteen days post-symptom onset (Extended Data
68 Fig. 2c).

69 We also monitored the presence of NAb in all plasma samples using retroviral particles
70 pseudotyped with the S glycoprotein of the SARS-CoV-2 (SARS-CoV-2pp)³. The results obtained for
71 each patient are presented in Extended Data Fig. 3. One sample of each patient was also used to
72 perform dose-response curves with particles pseudotyped with the G glycoprotein of the Vesicular
73 Stomatitis Virus and no inhibition was observed, demonstrating that the neutralization observed with
74 the COVID-19 patient plasmas was specific to the SARS-CoV-2 (Extended Data Fig. 4a).
75 Furthermore, plasmas from twelve patients that had previously been infected with other coronaviruses
76 (OC43 (n=5), 229E (n=4), NL63 (n=2) or HKU1 (n=1)) did not have any effect on SARS-CoV-2
77 pseudotype infectivity (Extended Data Fig. 4b and Supplementary Table 2). As expected, our results
78 demonstrate that the production of NAb correlates with the production of antibodies targeting the S1,
79 S2 and RBD domains and we detected NAb in all COVID-19 patients fifteen days post-symptom
80 onset (Fig. 1a). The NAb titers increase from one week post-symptom onset and reaches a plateau
81 one week after (Fig. 2a, 2b and Extended Data Fig. 3). However, the NAb titers reached were variable
82 between patients, 17% generated low levels of NAb ($40 \leq \text{titers} < 160$), 73% intermediate levels (160
83 $\leq \text{titers} < 1280$) and 10% high levels ($1280 \leq \text{titers}$) (Fig. 2a). Positive correlations between NAb titers
84 and anti-S1, anti-S2, anti-N or anti-RBD antibody levels, as well as white blood cells and lymphocytes
85 counts are shown in Extended Data Fig. 5. Significantly higher NAb titers were observed in patients
86 with severe forms ($p=0.04$) and in women ($p=0.03$) from 14 days post-symptoms onset (Extended
87 Data Fig. 6). In contrast, no significant difference was observed according to the age. We also had the
88 opportunity to monitor the presence of NAb in late samples of twelve patients (≥ 40 days post-
89 symptom onset) and we observed that the NAb titer dropped to low or undetectable level in most of
90 these samples (Fig. 2b and Extended data Fig. 3).

91 Finally, we monitored the presence of NAb in plasma samples from 25 asymptomatic carriers.
92 It is important to note that we could not establish when these patients had been infected since they
93 were asymptomatic but it probably occurred more than one week before sampling since they were
94 confirmed seropositive using commercial serological assays and our in-house ELISAs (Supplementary

95 Table 3). As shown in Fig. 2c and Extended Data Fig. 7, NAb were below the detection limit of our
96 assay in the majority of these plasma samples (56%, 14/25). Low NAb levels ($40 \leq \text{titers} < 160$) were
97 found in 28% of these patients (7/25). Three patients had intermediate NAb levels ($160 \leq \text{titers} < 1280$)
98 and only one showed a high NAb titer (≥ 1280).

99 Commercial serological assays that are complementary to direct viral detection of the SARS-
100 CoV-2 by RT-PCR have recently become available but they need to be finely evaluated. With our four
101 in-house ELISAs, we showed that the detection of the RBD and the N protein may be more suitable
102 since it was highly or slightly more sensitive than the detection of S1 or S2, respectively. We only
103 tested IgG detection since recent data showed that anti-SARS-CoV-2 IgG levels increase at the same
104 time or earlier than IgM levels⁴. We also report that COVID-19 patients generate variable levels of
105 NAb that are likely to drop a few weeks after infection and that most of asymptomatic carriers do not
106 generate NAb. Thus, our results raise questions concerning the role played by NAb in COVID-19
107 cure and protection against secondary infection. They also imply that anti-SARS-CoV-2 NAb should
108 be titrated to optimize convalescent plasma therapy. Finally, they suggest that induction of NAb is not
109 the only strategy to adopt for the development of a vaccine.

110

111

112 **Methods**

113 **Study population and samples.** Thirty patients diagnosed SARS-CoV-2 positive by RT-PCR on a
114 nasopharyngeal swab sample, between 25 February and 23 March 2020, were enrolled in the study.
115 The general information was extracted from electronic medical records and the clinical characteristics
116 of the 30 patients are described in Supplementary Table 1. Samples from patients diagnosed positive
117 for the human coronaviruses NL63, 229E, HKU1 and OC43 were also tested (Supplementary Table
118 2). Finally, we also used samples from 25 asymptomatic carriers (Supplementary Table 3) that were
119 diagnosed positive using commercial serological tests (LIAISON® SARS-CoV-2 IgG from DiaSorin
120 and/or ELISA SARS-CoV-2 (IgG) from EUROIMMUN). This study was approved by the institutional
121 review board of Amiens University Hospital (number PI2020_843_0046, 21 April 2020).

122
123 **In-house ELISAs.** All plasmas were decomplexed at 56°C for 30 min. MaxiSorp Nunc-immuno
124 96-well plate were coated with a 1 µg/mL solution of SARS-CoV-2 S1, S2, RBD or N antigen (The
125 Native Antigen Company, United Kingdom), overnight at 4°C. Wells were blocked with 1% fetal bovine
126 serum for 1 hour at 37°C. Then 100 µL of diluted plasmas (1:100 for S1, S2, RBD and 1:200 for N)
127 were added and incubated for 1 h at 37°C. After washing 4 times, plates were incubated with
128 peroxidase conjugated mouse anti-human IgG (Southern Biotech, 1/6000). After 4 washes, 100 µL of
129 o-phenylenediamine peroxidase substrate was added at room temperature in the dark. After 15
130 minutes, the reaction was stopped with H₂SO₄ solution. The optical density was measured at 490 nm.
131 All samples were run in triplicate. To establish the specificity of each assay, 40 pre-pandemic sera
132 from 2019 were tested. Each cut-off values were defined as the means plus 3 standard deviations
133 obtained with these samples.

134
135 **Neutralization assay.** SARS-CoV-2pp were produced as described previously³ with a plasmid
136 encoding a human codon-optimized sequence of the SARS-CoV-2 spike glycoprotein (accession

Brochot et al.

137 number: MN908947). Supernatants containing the pseudotyped particles were harvested at 48, 72
138 and 96 h after transfection, pooled and filtered through 0.45- μ m pore-sized membranes. All plasmas
139 were decomplexed at 56°C for 30 min. Neutralization assays were performed by preincubating
140 SARS-CoV-2pp and diluted plasma for 1 h at room temperature before contact with Vero cells
141 (ATCC® CCL-81™) that were transiently transfected with the plasmids pcDNA3.1-hACE2 and
142 pcDNA3.1-TMPRSS2 48 h before inoculation. Luciferase activities were measured 72 h post-infection,
143 as indicated by the manufacturer (Promega). The NAb titers were defined as the highest dilution of
144 plasma which resulted in a 90% decrease of the infectivity. Retroviral particles pseudotyped with the G
145 glycoprotein of the Vesicular Stomatitis Virus (VSVpp) were used to control the specificity of the
146 neutralization.

147

148 **Statistical analysis.** Quantitative variables were expressed as the median and compared using
149 Student's t-test. The Pearson correlation coefficient was used to measure the strength of a linear
150 association between two quantitative variables. Statistical analyses were performed using GraphPad
151 Prism 5. A two-sided P-value < 0.05 was considered statistically significant.

152

153

154 **Acknowledgments**

155 We thank the study participants who donated their blood samples for this project, and the healthcare
156 workers who are caring for COVID-19 patients. This work was supported by Flash Covid-19 funds
157 from the Amiens University Hospital and the French “Agence Nationale de la Recherche”.

158

159 **Author Contributions**

160 EB, GD, CF, SC and FH designed the research and analyzed the data ; JLS collected clinical
161 samples ; BD extracted clinical information from electronic medical records ; AT, SB and JD provided
162 key reagents ; EB and FH performed the experiments ; EB and FH wrote the manuscript.

163

164 **Competing Interests statement**

165 The authors declare no competing interests.

166

167

168 **References**

169 1. Meyer, B., Drosten, C., Müller, M.A. Serological assays for emerging coronaviruses: challenges and
170 pitfalls. *Virus Res.* **194**, 175-83 (2014). <https://doi.org/10.1016/j.virusres.2014.03.018>

171

172 2. Ota, M. Will we see protection or reinfection in COVID-19? *Nat Rev Immunol.* (2020)
173 <https://doi.org/10.1038/s41577-020-0316-3>

174

175 3. Millet, J.K., Whittaker, G.R. Murine Leukemia Virus (MLV)-based Coronavirus Spike-pseudotyped
176 Particle Production and Infection. *Bio Protoc.* **6**(23), e2035 (2016).

177 <https://doi.org/10.21769/BioProtoc.2035>

178

179 4. To, K.K., Tsang, O.T., Leung, W.S., Tam, A.R., Wu, T.C., Lung, D.C., Yip, C.C., Cai, J.P., Chan,
180 J.M., Chik, T.S., Lau, D.P., Choi, C.Y., Chen, L.L., Chan, W.M., Chan, K.H., Ip, J.D., Ng, A.C., Poon,
181 R.W., Luo, C.T., Cheng, V.C., Chan, J.F., Hung, I.F., Chen, Z., Chen, H., Yuen, K.Y. Temporal profiles
182 of viral load in posterior oropharyngeal saliva samples and serum antibody responses during infection
183 by SARS-CoV-2: an observational cohort study. *Lancet Infect Dis.* **20**(5), 565-574 (2020).

184 [https://doi.org/10.1016/S1473-3099\(20\)30196-1](https://doi.org/10.1016/S1473-3099(20)30196-1)

185

186

187

Brochot et al.

188 **Supplementary Table 1. Characteristics of the 30 hospitalized patients included in the study**
 189

Patient characteristics		Mild Disease (n=12)	Severe disease (n=18)
	Female	6 (50%)	6 (33%)
	Male	6 (50%)	12 (66%)
	Median Age (Years)	77 (59-87)	63 (38-78)
Chronic comorbidities	Hypertension	7	9
	Chronic heart disease	3	3
	Chronic lung disease	3	0
	Chronic kidney disease	2	0
	Diabetes	3	4
	Hyperlipidemia	2	1

190

191

192

193

194

195

196 **Supplementary Table 2. Patients previously infected with endemic coronaviruses used as**
 197 **control in the study**
 198

Patient	Coronavirus strain	Days post-diagnostic	Detection of IgG in our in house ELISA assays				SARS-CoV-2 NAb titer
			S1	S2	RBD	NP	
C1	OC43	174	-	-	+/-	-	<40
C2	229E	39	-	-	-	-	<40
C3	NL63	561	-	-	-	-	<40
C4	OC43	170	-	-	-	-	<40
C5	OC43	176	-	-	-	-	<40
C6	NL63	16	-	-	-	-	<40
C7	229E	14	-	-	+	+	<40
C8	HKU1	24	-	-	-	-	<40
C9	OC43	301	+/-	-	-	+/-	<40
C10	229E	56	-	-	-	-	<40
C11	229E	761	-	-	-	+/-	<40
C12	OC43	86	-	-	-	-	<40

199 +, positive ; -, negative ; +/-, equivocal

200

201

Brochot et al.

202
203

Supplementary Table 3. SARS-CoV-2 asymptomatic carriers included in the study

Patient	Detection of IgG in in house ELISAs			Diasorin assay	Euro-immun assay	SARS-CoV-2 NAb titer
	S1	S2	NP			
AC1	+	+	+	+	+/-	40
AC2	+	+/-	+	-	+	<40
AC3	+	+	+	+	+	40
AC4	+/-	+	+	+	-	<40
AC5	-	+	+	+	-	<40
AC6	+/-	+	+	+	+/-	<40
AC7	+	+	+	+	+	160
AC8	+	+	+	+	+	640
AC9	+	+	+	+	+	<40
AC10	+	+	+	+	+	80
AC11	+	+	+	-	+	<40
AC12	-	+	+	+	-	<40
AC13	+	+/-	+	-	+	<40
AC14	+	+	+	+	+	480
AC15	+	+	+	+/-	+	<40
AC16	+	+	+	+	+	120
AC17	+	+	+	+	+	80
AC18	+	+	+	+	+	5120
AC19	+	+	+	+	+	<40
AC20	+	+	+	+	+	<40
AC21	+	+	+	+	+	60
AC22	+	+	+	+	+	60
AC23	+	+	+	+	+	<40
AC24	+	+	+	+	+	<40
AC25	+	+	+	+	+	<40

204
205

+, positive ; -, negative ; +/-, equivocal

206

207

208

209 **Figure Legends**

210

211 **Fig. 1 | Antibody response in COVID-19 patients.** **a**, Kinetics of anti-S1, anti-S2, anti-RBD, anti-N
212 and NAb detection in 30 COVID-19 patients after symptom onset. **b**, Evolution of the anti-S1, anti-S2,
213 anti-RBD and anti-N antibody levels during the first month post-symptom onset.

214

215 **Fig. 2 | NAb response in COVID-19 patients and SARS-CoV-2 asymptomatic carriers.**

216 **a**, Evolution of the NAb titer in 30 COVID-19 patients during the first month post-symptom onset.

217 **b**, Evolution of the NAb titer in 12 COVID-19 patients after more than 40 days post-symptom onset.

218 The dashed line indicates the cut-off of the assay. **c**, Determination of the NAb titer in plasma samples
219 from 25 asymptomatic carriers.

220

221

222 **Extended Data Fig. 1 | Correlations between anti-S1, anti-S2, anti-RBD and anti-N levels in in-**
223 **house ELISAs. a**, anti-S1 versus anti-S2. **b**, anti-S1 versus anti-RBD. **c**, anti-S1 versus anti-N. **d**,
224 anti-S2 versus anti-RBD. **e**, anti-S2 versus anti-N. **f**, anti-RBD versus anti-N. Dashed lines indicate
225 assay cut-offs for positivity. OD, optical density.

226

227 **Extended Data Fig. 2 | Temporal profiles of anti-S1, anti-S2, anti-RBD and anti-N antibody**
228 **levels.** Patients samples were divided into three periods groups (day 0-7, day 8-14 and day >14). **a**,
229 The temporal profiles are presented according to the severity of the disease (SD, severe disease
230 requiring intensive care ; MD, mild disease). **b**, The temporal profiles are presented according to the
231 sex (M, male ; F, female). **c**, The temporal profiles are presented according to the age (< or > 60 years
232 old). Dashed lines indicate assays cut-offs for positivity and lines indicate the median for each assay.
233 OD, optical density. NS, not significant ; *, $p < 0.05$; **, $p < 0.01$.

234

235 **Extended Data Fig. 3 | NAb response to SARS-CoV-2 in COVID-19 patients.** SARS-CoV-2pp were
236 preincubated with serially diluted plasma obtained from 30 COVID-19 patients (#1 to #30) at different
237 days post-symptom onset (d2 to d58). Dose response curves represent the means of normalized
238 infectivity (%) from two independent experiments performed in duplicate. Error bars have been omitted
239 for clarity.

240

241 **Extended Data Fig. 4 | Specificity of the neutralization assay. a** VSVpp were preincubated with
242 serially diluted plasma obtained from 30 COVID-19 patients (#1 to #30). Dose response curves
243 represent the means of normalized infectivity (%) from two independent experiments performed in
244 duplicate. **b** SARS-CoV-2pp were preincubated with serially diluted plasma obtained from 12 patients
245 infected with 229E, NL63, HKU1 or OC43 coronaviruses (C1 to C12). Dose response curves
246 represent the means of normalized infectivity (%) from two independent experiments performed in
247 duplicate. Error bars have been omitted for clarity.

Brochot et al.

248

249 **Extended Data Fig. 5 | Correlations between NAb titers and anti-S1, anti-S2, anti-RBD and anti-**
250 **N antibody levels as well as white blood cells counts or lymphocyte counts. a,** NAb titer versus
251 anti-S1. **b,** NAb titer versus anti-S2. **c,** NAb titer versus anti-RBD. **d,** NAb titer versus anti-N. **e,** NAb
252 titer versus white blood cells counts. **f,** NAb titer versus lymphocyte counts. Dashed lines indicate
253 assay cut-offs for positivity. OD, optical density.

254

255 **Extended Data Fig. 6 | Temporal profiles of NAb titers.** Patients samples were divided into three
256 periods groups (day 0-7, day 8-14 and day >14). **a,** The temporal profiles are presented according to
257 the severity of the disease (SD, severe disease requiring intensive care ; MD, mild disease). **b,** The
258 temporal profiles are presented according to the sex (M, male ; F, female). **c,** The temporal profiles
259 are presented according to the age (< or > 60 years old). Dashed lines indicate assays cut-offs for
260 positivity and lines indicate the median for each assay. NS, not significant ; *, p<0.05 ; **, p<0.01.

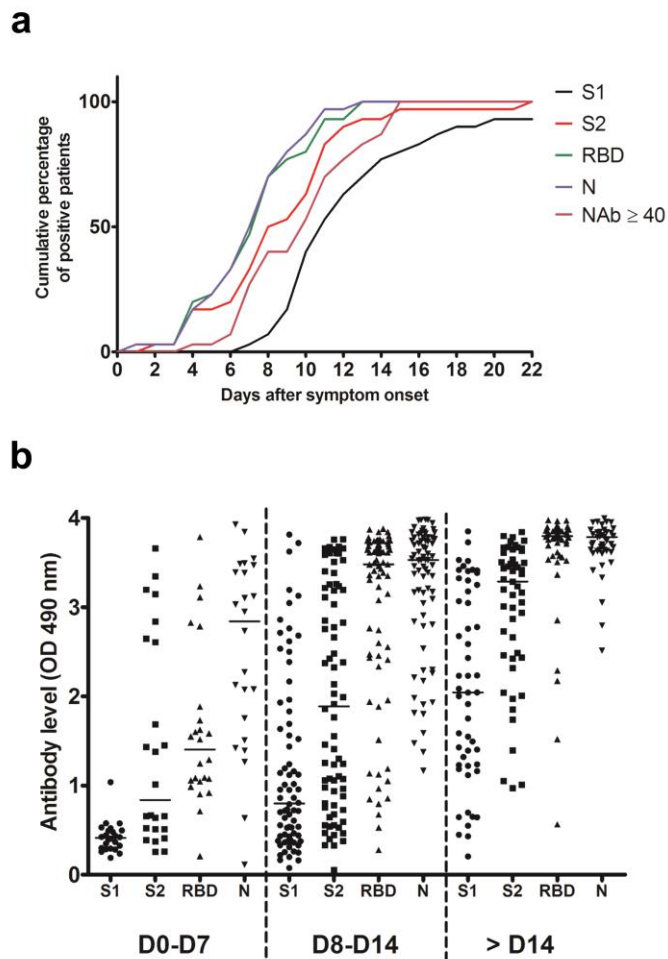
261

262 **Extended Data Fig. 7 | SARS-CoV-2 NAbs in asymptomatic carrier samples.** SARS-CoV-2pp
263 were preincubated with serially diluted plasma obtained from 25 asymptomatic carriers that were
264 confirmed with commercial serological assays (AC1 to AC25). Dose response curves represent the
265 means of normalized infectivity (%) from two independent experiments performed in duplicate. Error
266 bars have been omitted for clarity.

267

268

Brochot et al.



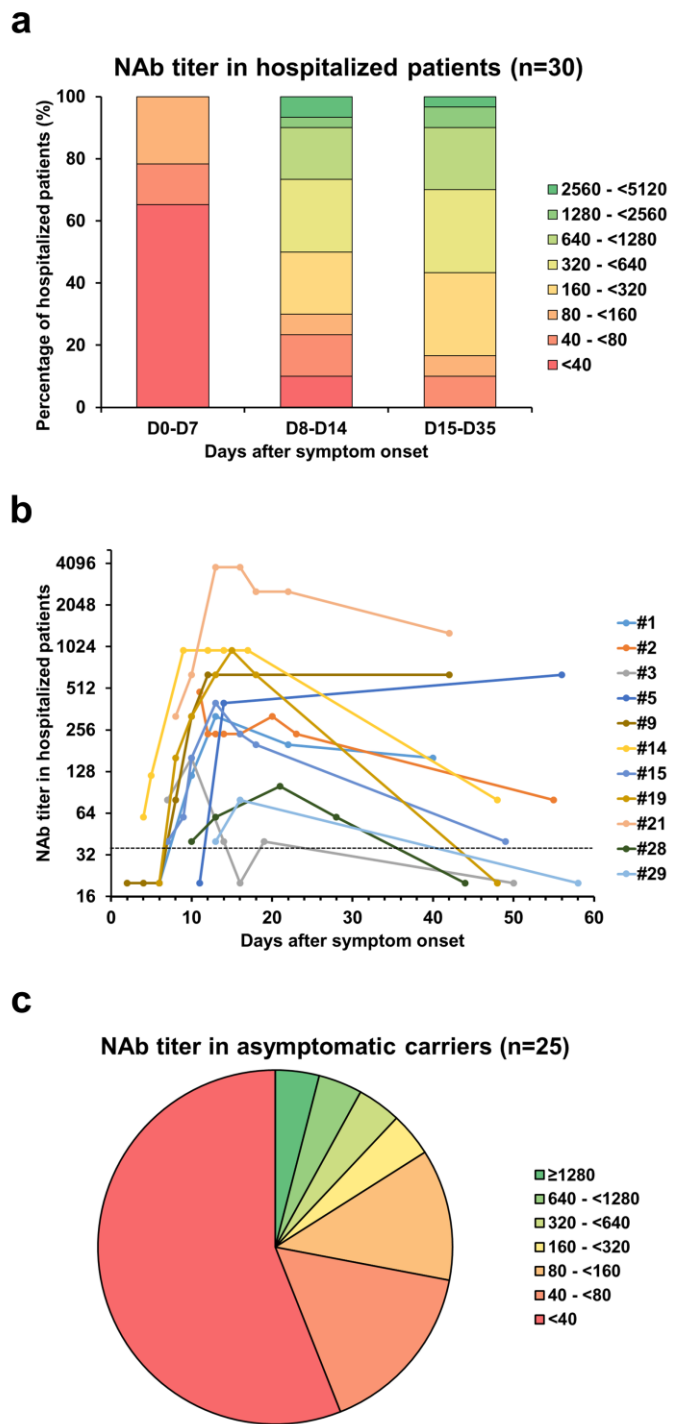
269

270

271

272

Fig. 1



273

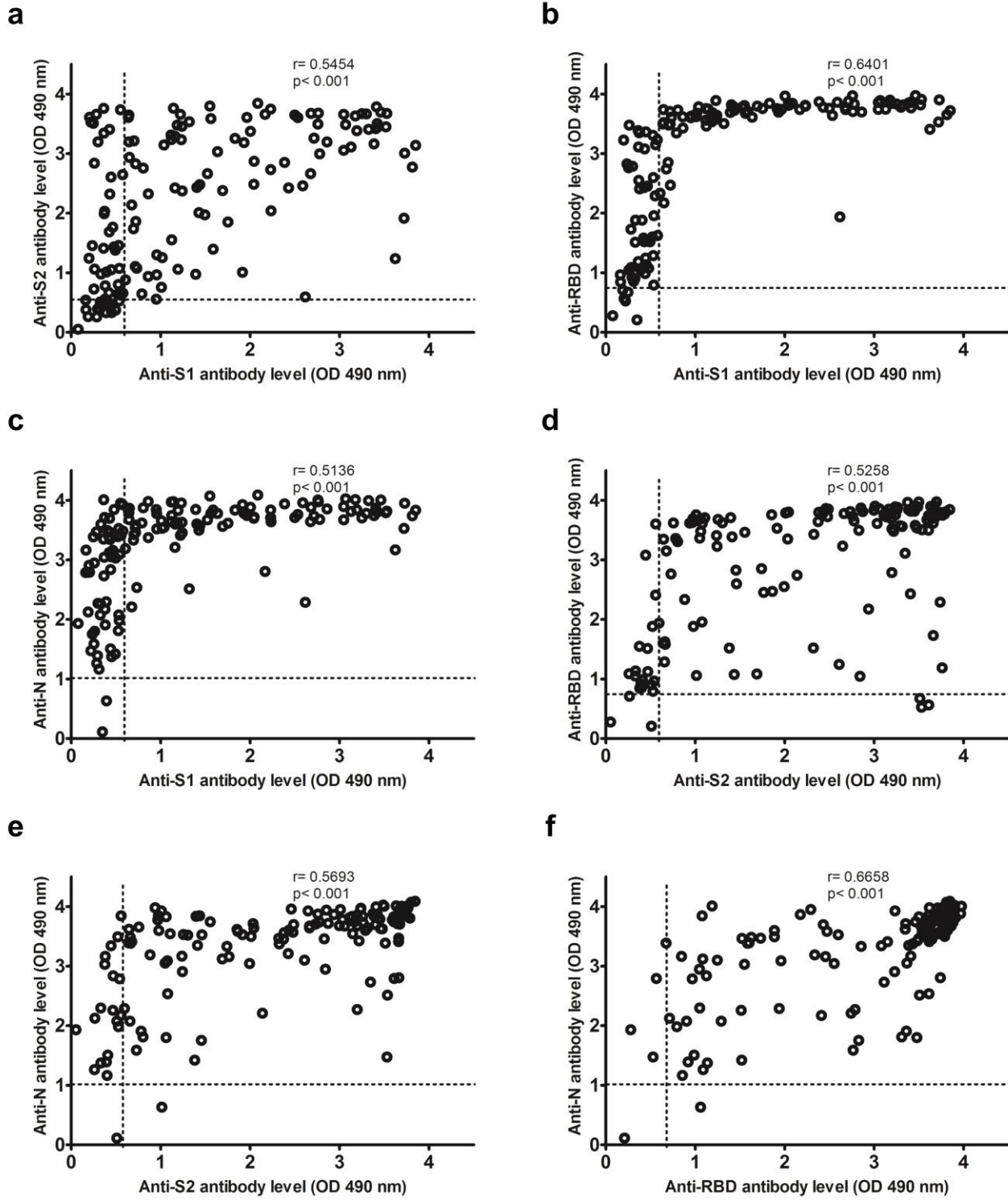
274

275

276

Fig. 2

Brochet et al.



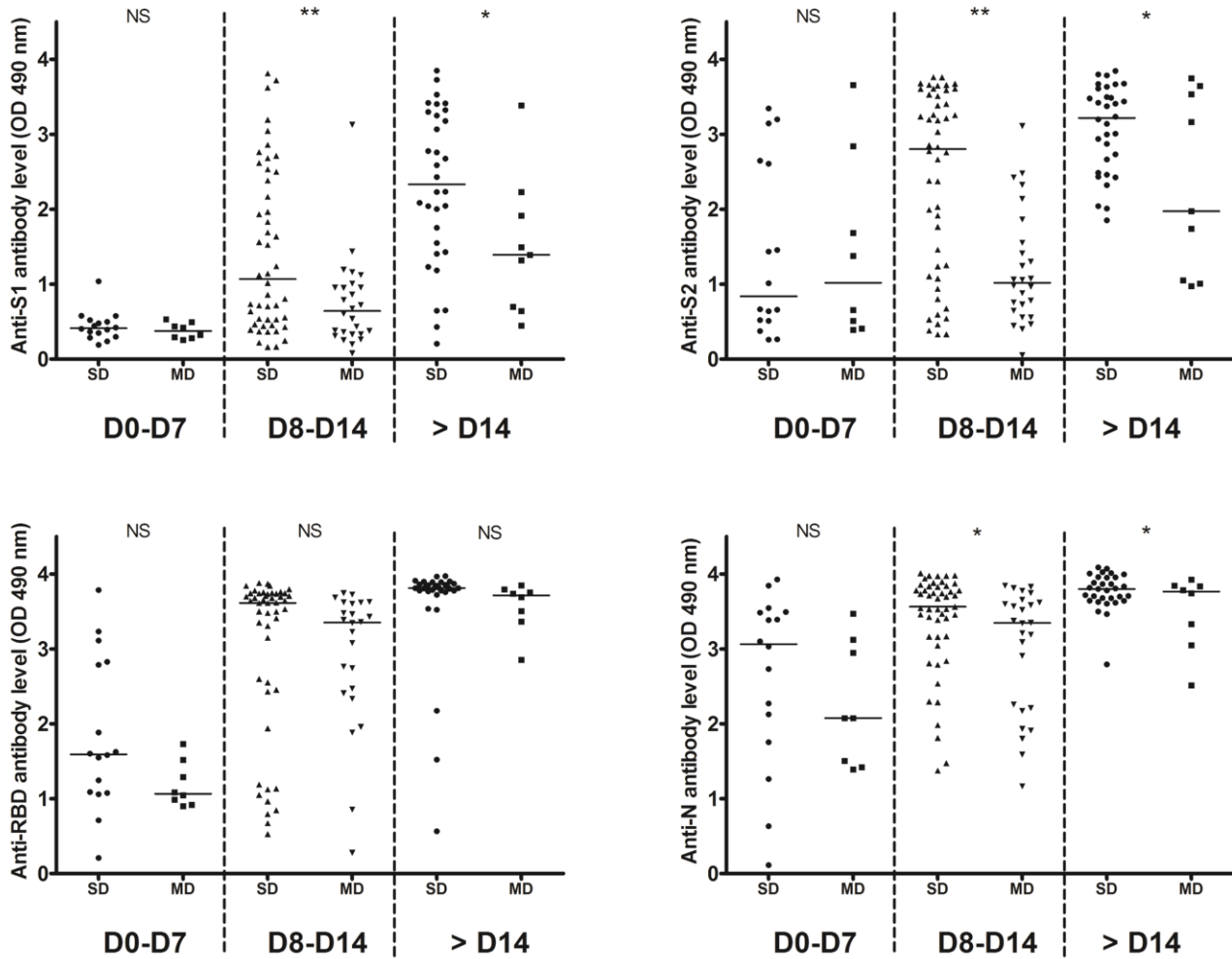
277

278

279

Extended Data Fig. 1

Brochet et al.



280

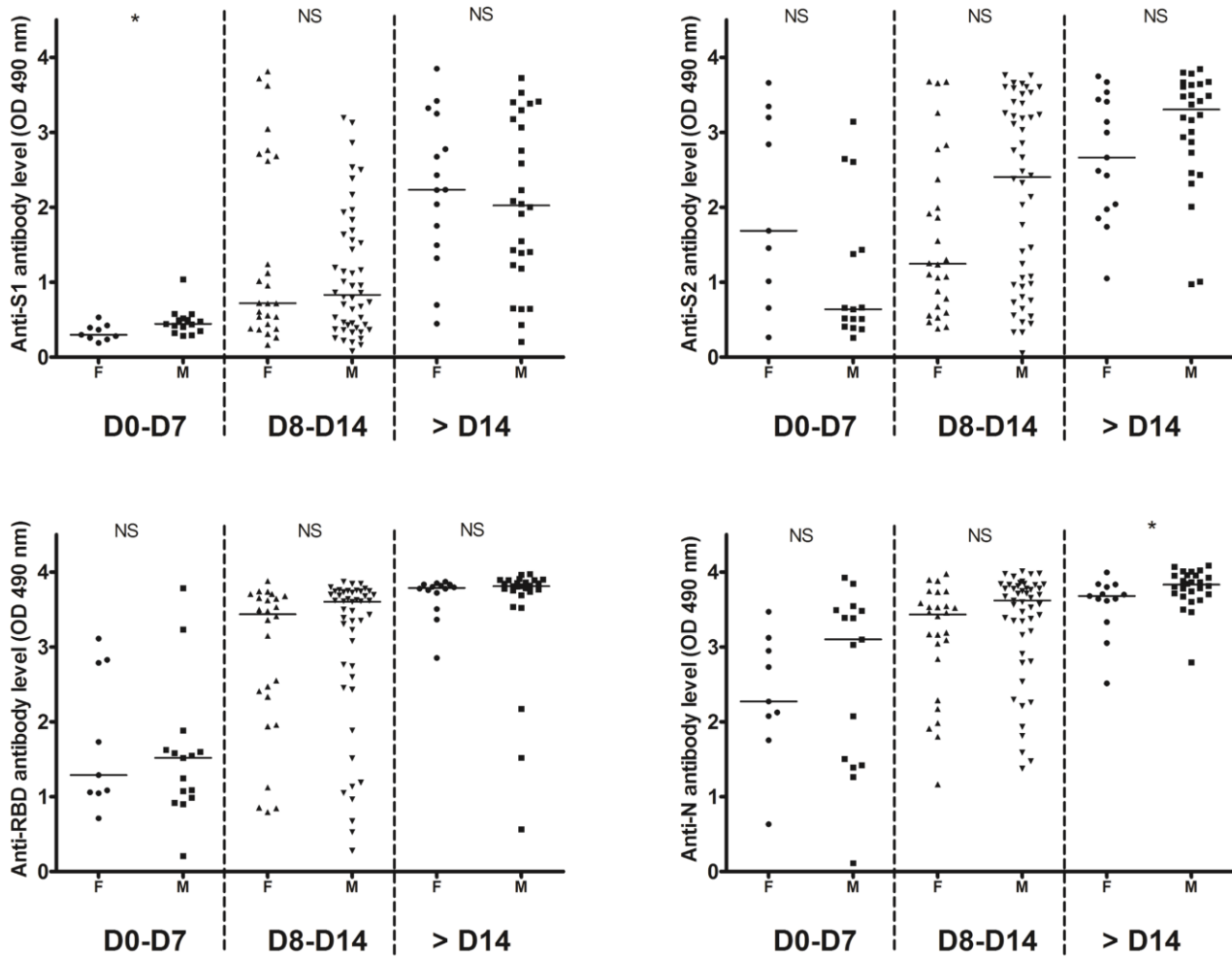
281

282

283

Extended Data Fig. 2a

Brochot et al.



284

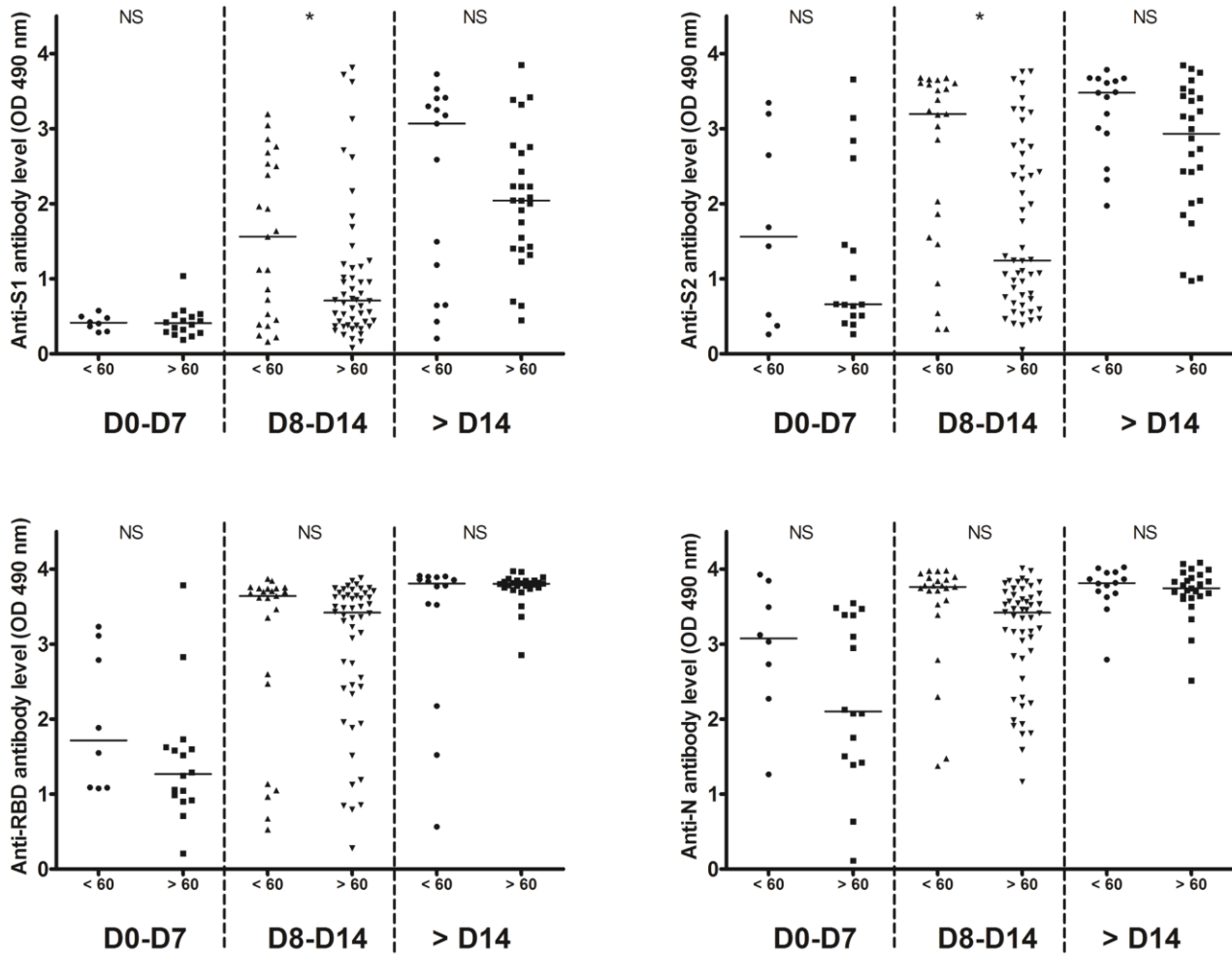
285

286

287

Extended Data Fig. 2b

Brochot et al.



288

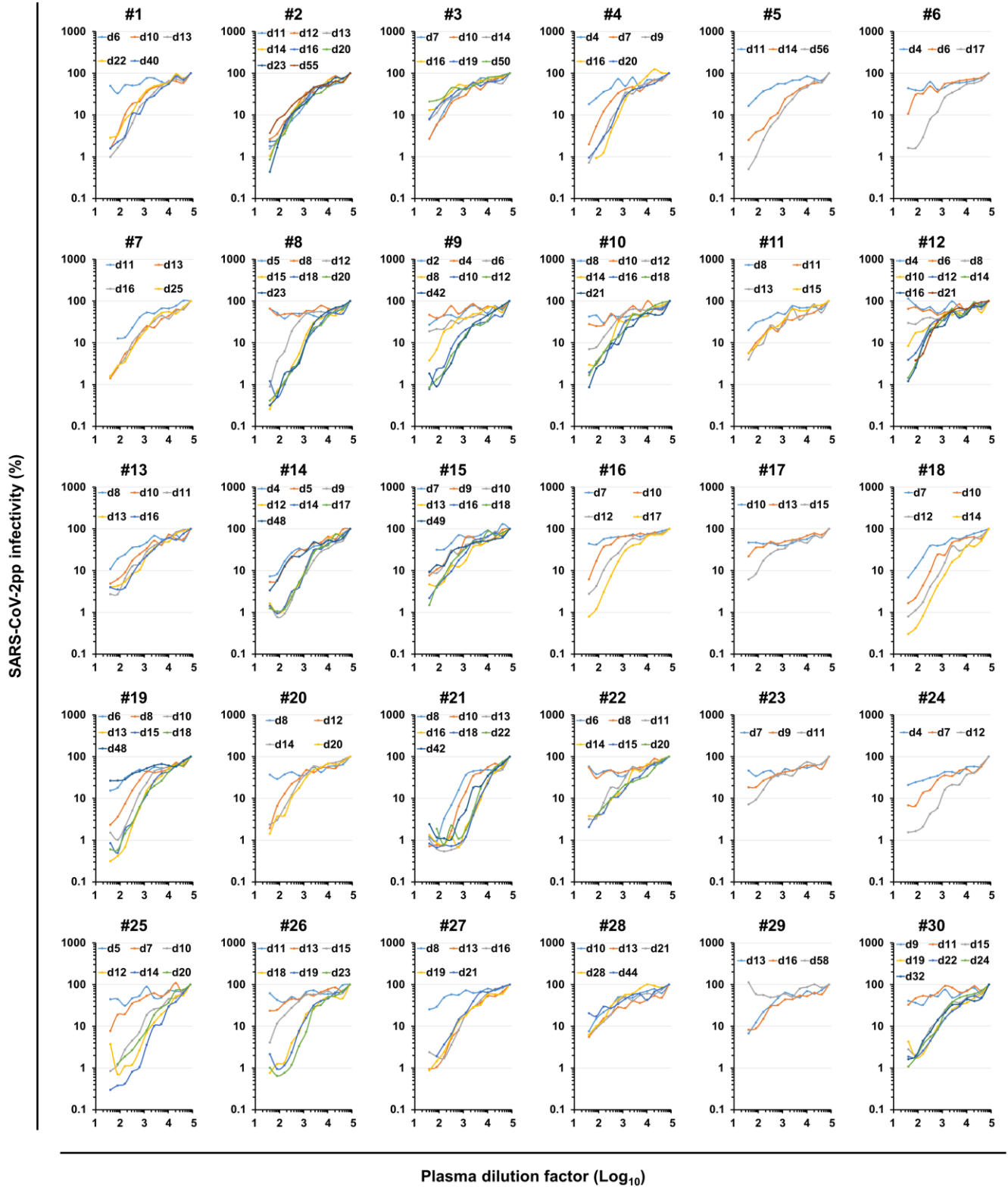
289

290

291

Extended Data Fig. 2c

Brochet et al.



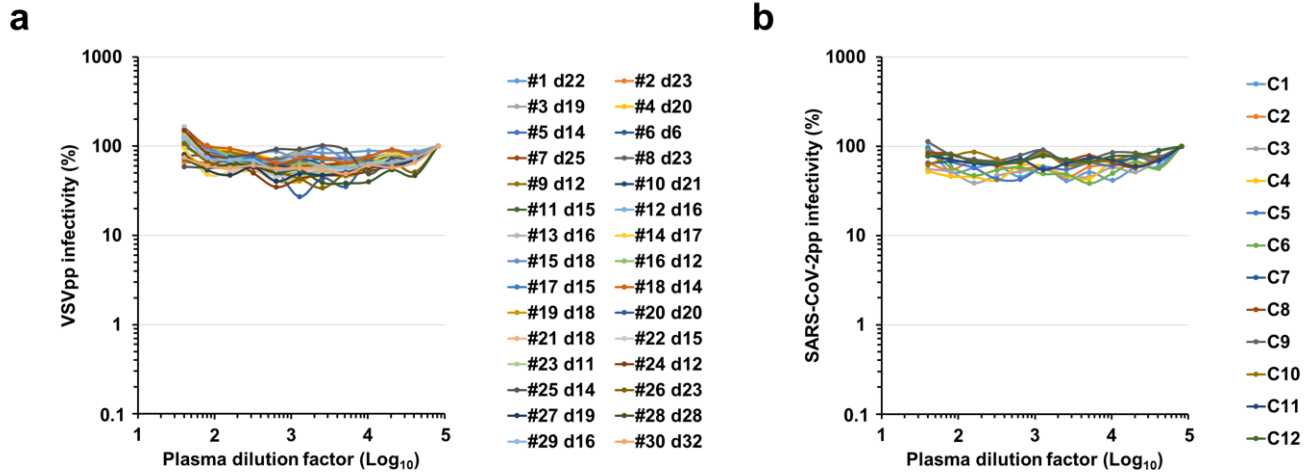
292

293

294

Extended Data Fig. 3

Brochot et al.



295

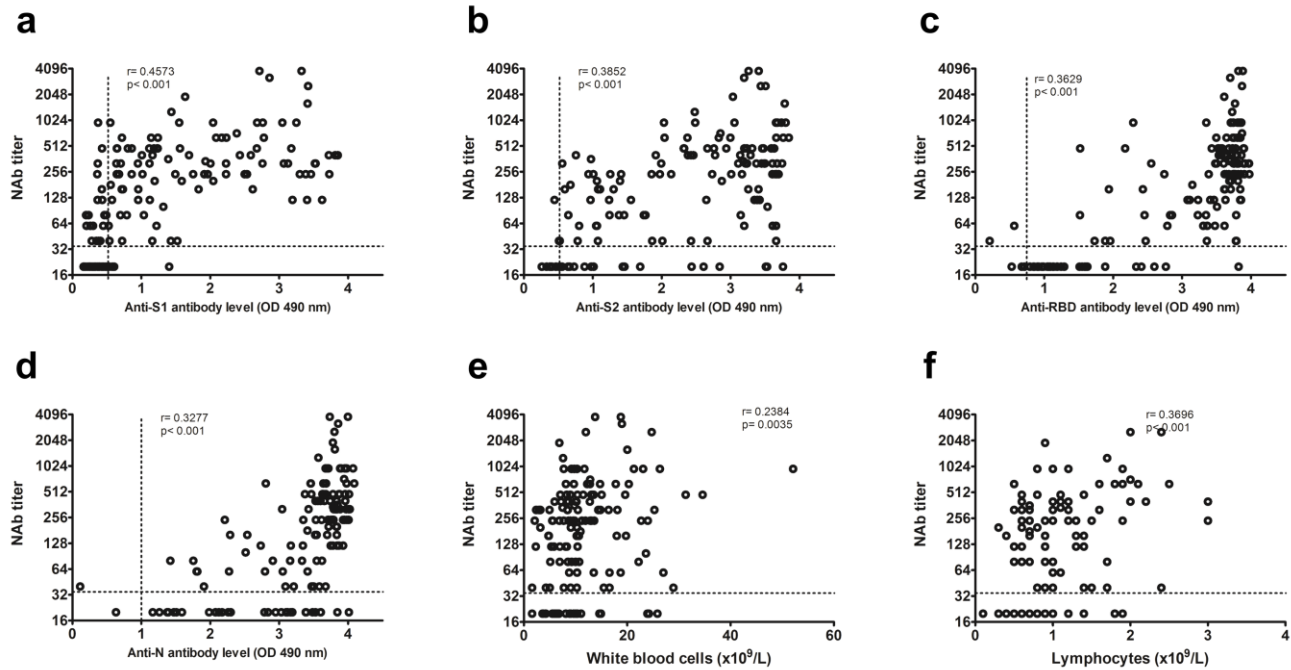
296

297

298

Extended Data Fig. 4

Brochet et al.



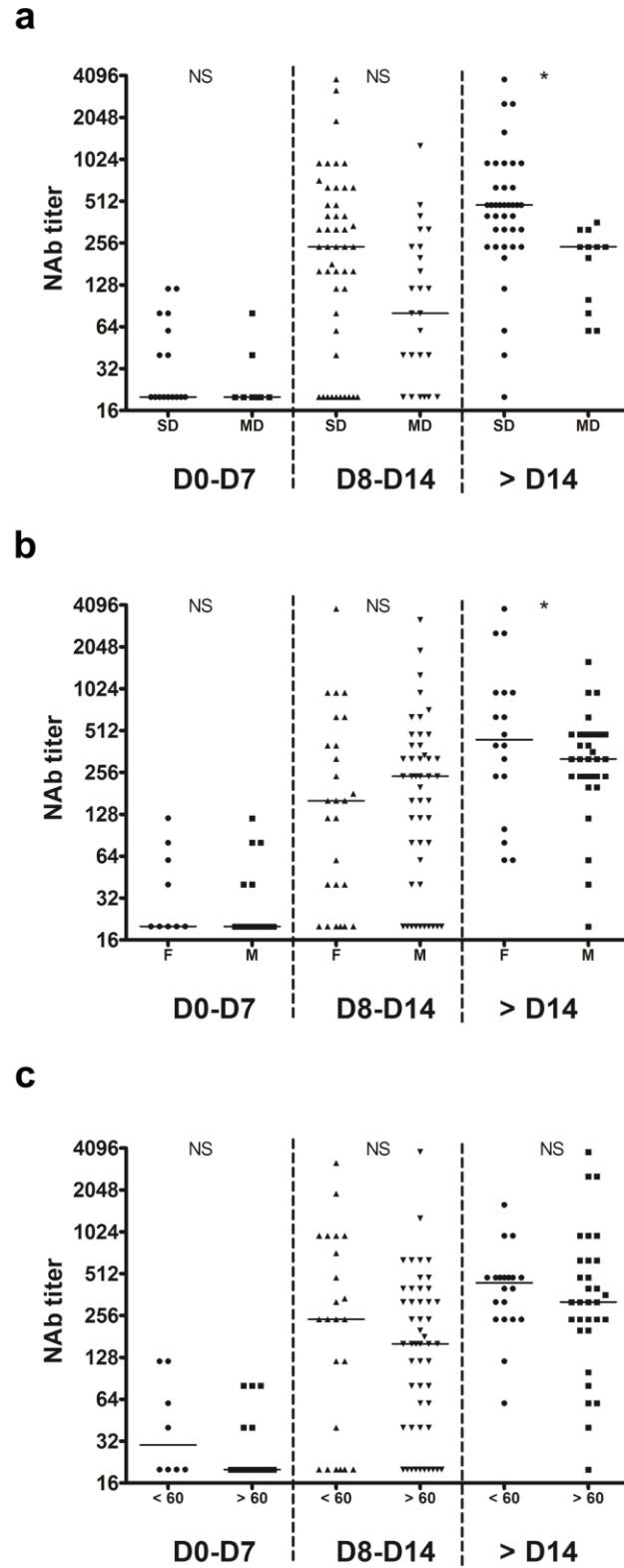
299

300

301

302

Extended Data Fig. 5



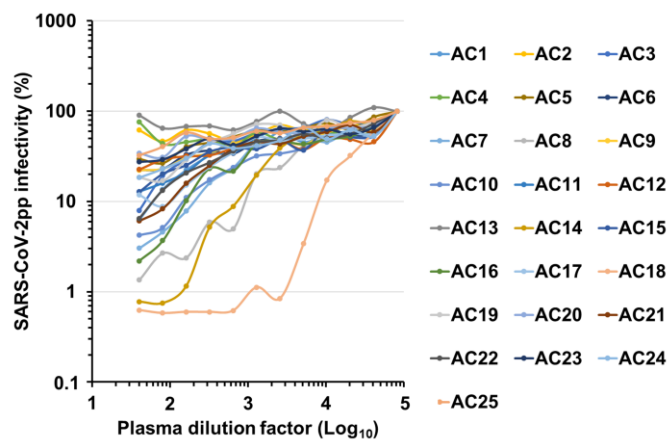
303

304

305

Extended Data Fig. 6

Brochot et al.



306

307

308

Extended Data Fig. 7