

Title: Impact of COVID-19 infection on maternal and neonatal outcomes: a review of 287 pregnancies

Authors' Name: Fatemeh Azarkish¹, Rokhsana Janghorban^{2*}

1. PhD in Reproductive Health, Assistant Professor, Department of Midwifery, School of Nursing and Midwifery, Iranshahr University of Medical Sciences, Iranshahr, Iran
Email: azarkish2005@yahoo.com
ORCID ID: <http://orcid.org/0000-0003-4496-172X>
2. PhD in Reproductive Health, Associate Professor, Department of Midwifery, School of Nursing and Midwifery, Maternal-Fetal Medicine Research Center, Shiraz University of Medical Sciences, Shiraz, Iran
Email: janghorban@sums.ac.ir, Phone Number: 98-7136474254
ORCID ID: <http://orcid.org/0000-0002-7831-8401>

Corresponding Author:

Rokhsana Janghorban

PhD., Associate Professor in Reproductive Health, Maternal-Fetal Medicine Research Center, Midwifery Department, School of Nursing and Midwifery, Nemazee Square, Zand Blv., Shiraz University of Medical Sciences, Shiraz, Iran

Phone Number: 98-7136474254

Facsimile number: 98- 7136474252

Email: janghorban@sums.ac.ir

ORCID ID: <http://orcid.org/0000-0002-7831-8401>

Abstract

Pregnant women are vulnerable group in viral outbreaks especially in the severe acute respiratory syndrome coronavirus 2 (SARS-CoV-2) pandemic. The aim of this review was to identify maternal and neonatal outcomes in available articles on pregnancies affected by COVID-19. The articles that had assessed outcomes of pregnancy and perinatal of women with COVID-19 between Oct 2019 and Apr 30, 2020 without language limitation were considered. All kinds of studies such as case report, case series, retrospective cohort, case control were included. We searched databases, selected relevant studies and extracted data regarding maternal and neonatal outcomes from each article. Data of 287 pregnant women with COVID-19 of 6 countries were assessed from 28 articles between December 8, 2019 and April 6, 2020. Most pregnant women reported in their third trimester, 102 (35.5%) cases were symptomatic at the time of admission. Common onset symptoms, abnormal laboratory findings, and chest computed tomography pattern were fever (51.5%), lymphocytopenia (67.9%), and multiple ground-glass opacities (78.5%) respectively. 93% of all deliveries were done through cesarean section. No maternal mortality and 3 % ICU admission were reported. Vertical transmission was not reported but its possibility was suggested in three neonates. One neonatal death, one stillbirth, and one abortion were reported. All newborns were not breastfed. This review showed fewer adverse maternal and neonatal outcomes in pregnant women with COVID-19 in comparison with previous coronavirus outbreak infection in pregnancy. Limited data are available regarding possibility of virus transmission in utero, during vaginal childbirth and breastfeeding. Effect of COVID-19 on first and second trimester and ongoing pregnancy outcomes in infected mothers is still questionable.

Keywords:

2019-nCoV infection, COVID-19 pandemic, 2019-nCoV disease, COVID19, SARS-CoV-2, pregnancy, pregnant women, maternal, neonate, infants, perinatal

1. Introduction

Outbreak of Coronavirus (COVID-19) as a new respiratory disease has affected over two million individuals throughout the world and the World Health Organization (WHO) has declared the outbreak as a global pandemic on March 11, 2020 [1,2]. Understanding of the effect of viral infection during pregnancy is considerably important especially in pandemic due to possible effect on the pregnant woman and the fetus [3]. Studies showed that pregnant mothers were vulnerable group in viral outbreaks of influenza-A, H1N1, the severe acute respiratory syndrome coronavirus (SARS-CoV), the Middle East respiratory syndrome coronavirus (MERS-CoV), Ebola, and Zika virus and had higher risk of mortality and worse maternal and neonatal outcomes such as abortion, still birth, preterm delivery, and birth defects [4-8].

Some conditions increase vulnerability of mothers and fetuses to become infected with outbreak viruses especially respiratory viruses. The first one is maternal physiologic adaptive changes in cardiopulmonary system during pregnancy which leads to increased heart rate, and stroke volume, and reduced pulmonary residual capacity. These changes could increase the risk of hypoxemia [9]. The second issue is maternal immunologic alterations and a shift from Th1 to Th2 immunity that occurs during pregnancy. This shift could decrease the robustness of cell-mediated immunity, alter responses to viral respiratory infections during pregnancy, and increase severity of these infections [10,11]. The third factor is related to characteristics of innate and adaptive immunity in fetus including lower cytolytic function of fetal natural killer (NK) cells compared to adults, lower intensity of antigen-specific antibody response in comparison with adults, immature T cell immunity with suppressed Th1 responses and upregulated Th2 responses, hyporesponsive macrophages, and scarce soluble inflammatory mediators [12-14]. All of these characteristics increase fetal susceptibility to infections. Furthermore, a viral infection of placenta could produce inflammatory cytokines, activate maternal immune system, impair placenta, induce abortion or preterm labor in perinatal period and lead to long-term neurodevelopmental sequelae in adulthood [15-17].

Despite some similarities among COVID-19, SARS and MERS, the 2019 novel coronavirus seems to be less lethal and more easily spread than the other two coronavirus according to available information [18]. This characteristic could raise critical concern as regards widespread transmission in the community and increase infected pregnant women numbers and the possibility of vertical transmission of COVID-19 from mother to the fetus, and adverse outcome on maternal, fetal and neonatal health.

Current knowledge related to effect of COVID-19 infection on maternal and perinatal outcomes are based on information that exists in some scattered case reports and case series which were mostly reported from Wuhan, Hubei Province, China. It seems that better clinical management of the infection in pregnancy needs to have more information of COVID-19 behavior in a large number of infected pregnant cases in different trimesters from various countries. This review was conducted to identify maternal and neonatal outcomes in available articles on pregnancies affected by COVID-19 throughout the world.

2. Materials and Methods

Eligibility criteria

In this review, the articles that had assessed outcomes of pregnancy and perinatal of women with COVID-19 between Oct 2019 and Apr 30, 2020 were considered. All kinds of studies such as case report, case series, retrospective cohort, case control were included. Non-English language publications were also included and data extraction of them was used through Google Translator.

Literature search and data extraction

We searched PubMed, Scopus, Web of Science (WOS), and MedRxiv using MeSH-compliant keywords including: "2019-nCoV infection", "coronavirus disease 2019", "COVID-19 pandemic", "2019-nCoV disease", "2019 novel coronavirus disease", "COVID19", "2019 novel coronavirus infection", "coronavirus disease-19", "severe acute respiratory syndrome coronavirus 2", "SARS-CoV-2", "pregnancy", "pregnant women", "maternal", and "prenatal care". Search strategy of them is mentioned in Appendix 1. Relevant studies [19-46] were selected based on titles and abstracts, then their full texts were assessed by two reviewers. The following data were extracted from each article: name of the first author, time of study, the number of mothers and neonates, mother's age, gestational age, delivery mode, maternal and neonatal outcomes, and COVID-19 vertical transmission (Table 1).

3. Results

A flow diagram of the literature search is shown in Figure 1. From 77 results in PubMed, 13 in Scopus, 7 in WOS, and 45 in MedRxiv, 28 relevant studies (15 case series, 10 case reports, 1 case-control, 2 Retrospective clinical series) were identified. Characteristics of the selected studies are described in Table 1. Two full texts of included articles are in Chinese [26,38] and the others are in English. All articles reported SARS-CoV-2 positive pregnant women from China except six case reports from Republic of Korea (1) [39], Sweden (1) [41], United States (2) [44,45], Central America (1) [42] , and Switzerland (1) [46]. A total of 287 pregnant women with COVID-19 were identified.

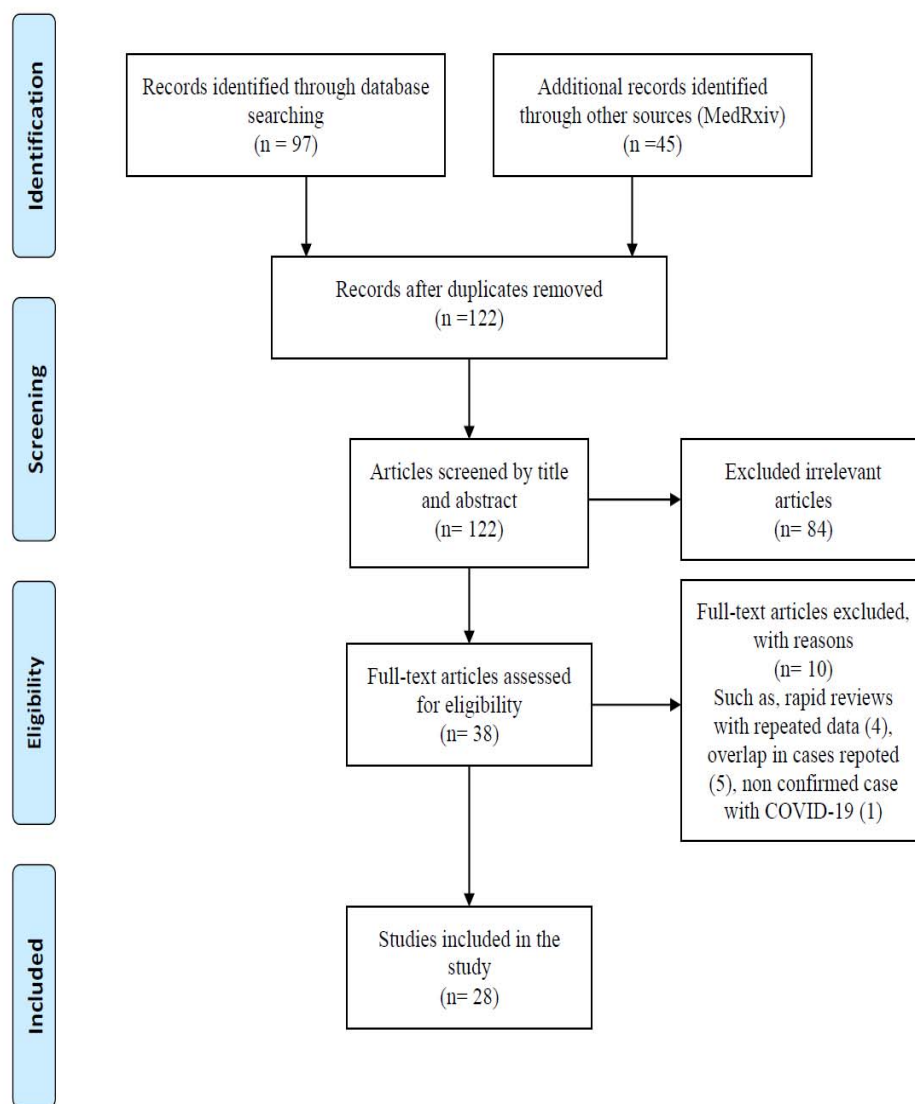


Figure 1: Flow diagram of literature search

Maternal characteristics

Mean maternal age ranged from 22 to 41 years of age. Most pregnant women reported in their third trimester. Eleven pregnant women (3.8 %) were in their second trimester and there was no data on first-trimester COVID-19 infection. All pregnancies were singleton except 5 twin cases. Forty-two pregnancies (15%) were ongoing including seven women (2.5%) in second trimester, ten women (3.6%) in third trimester, and trimester of twenty-five women (8.9%) was not mentioned. All these women were discharged without any major complications. The outcomes of these pregnancies are not known.

Sixty-seven pregnant women (23.9%) had co-morbidities or complications in their pregnancies. Gestational diabetes mellitus, gestational hypertension, and preeclampsia were the most common complications in these pregnancies. At the time of admission, 102 (35.5%) and 34 (11.8%) cases were symptomatic and asymptomatic, respectively. The status of symptoms at the time of admission was not mentioned in 152 of 287 cases. Fever was a common onset symptom in pregnant women with COVID-19 (51.5%), although onset symptoms were not mentioned in 22 cases. Lymphocytopenia was a common abnormal laboratory finding which was reported in 91 of 134 cases (67.9%) where the information was recorded. Multiple ground-glass opacities were the most common pattern visible in chest computed tomography (CT) (201 of 256 available cases).

Maternal outcomes

There is currently no data about first trimester miscarriage affected women with COVID-19 infection because all pregnant women were in second and third trimester of their pregnancies. In terms of second or third-trimester pregnancy loss, there was only one stillbirth in a woman at 34 weeks gestational age with a fever and sore throat whose condition deteriorated during hospitalization, she was transferred to ICU and required Extracorporeal Membrane Oxygenation (ECMO) due to multiple organ dysfunction syndrome (MODS) [27]. In addition, a second-trimester miscarriage in a pregnant woman with COVID-19 infection was reported at 19 weeks gestational age [46]. Forty-three women delivered preterm. 88.38% of these preterm deliveries were delivered electively by cesarean section. Fetal intrauterine growth restriction post COVID-19 infection was not reported in any studies because pregnant women delivered a short time after onset of illness and no data were available regarding to fetal growth monitoring in ongoing pregnancies at the time of publication. Placental pathology in three cases showed that lack of morphological changes was related to viral infection, no villitis or chorioamnionitis, and negative 2019-nCoV nucleic acid test [38]. Although, positive RT-PCR test for SARS-Cov-2 of placental submembrane and cotyledon was reported in a pregnant woman with COVID-19 in second trimester of her pregnancy [46]. 93% of all deliveries were done through cesarean section and vaginal delivery was reported in 17 of 243 cases. According to the mentioned causes of cesarean section in 84 cases, COVID-19 infection was the most common indication for cesarean section in 44 of 84 cases (52.38%), and fetal distress was ranked second with 13 of 84 cases (15.47%). From the papers that provided information about fetal condition assessment (118 cases), fetal distress was reported in 20 cases (16.9%) and fetal condition in 94 cases (79.6%) was reported normal. From all pregnant women with COVID-19, 156 cases received oxygen support through a nasal cannula and mask and 5 cases were admitted to the intensive care unit (ICU) and 4 women required intubation and mechanical ventilation. No maternal death was reported to date.

Neonatal outcomes

Neonatal asphyxia was reported in 7 of 232 cases (3%). A male newborn death was reported on the 9th day after birth [30]. His mother developed thrombocytopenia complicated with abnormal liver function. He born at 34 weeks and 5 days gestational age with an Apgar score of 8 at five minutes and admitted to NICU due to

shortness of breath and moaning. On the 8th day after birth, his condition deteriorated due to refractory shock, multiple organ failure, and disseminated intravascular coagulation (DIC). Result of his throat swab for 2019-nCoV nucleic acid testing was negative on 9th day after delivery. According to the mentioned newborn feeding in 60 cases, all newborns of mothers with COVID-19 were given formula instead of breast milk. Vertical transmission of COVID-19 from mother to the fetus was not reported in available literature. However, possibility of mother-to-child vertical transmission was suggested in three cases [23,29,35]. The first one was a newborn with elevated IgM level, cytokines, and white blood cell count, normal chest CT, and negative RT-PCR tests on nasopharyngeal swabs taken from 2 h to 16 days of age [23]. The second one was a neonate with positive nucleic acid test of SARS-CoV-2 at 36 h after birth, mild shortness of breath symptoms, mild pulmonary infection in chest X-ray and no fever and cough. The neonate was discharged after 2 weeks following two consecutive negative nucleic acid test results [29]. The third one was a neonate with positive RT-PCR test for SARS-Cov-2, pulmonary infection in chest X-ray 53 h after birth, and no clinical manifestations of Covid-19. The neonate was discharged after subsequent negative RT-PCR of throat swabs on 16th day after birth [35]. Additionally, two newborns were reported with elevated SARS-CoV-2 IgM antibodies, negative RT-PCR test results of neonatal throat swabs, and no Covid-19 infection symptoms [45].

4. Discussion

After the first COVID-19 pneumonia cases were reported in Wuhan, Hubei Province, China, in December 2019, and the ongoing outbreak across the world [1], some reports in pregnant women with COVID-19 infection have been identified. This article summarizes available information from 287 pregnant cases with COVID-19.

Studies showed that SARS infection was associated with 1st trimester spontaneous abortion, fetal growth restriction due to fibrin deposition, and a high case fatality rate (CFR) of 25% in pregnant women [47,48]. A case-control study done in Hong Kong reported that ICU admission rate and CFR in the pregnant group were higher than non-pregnant group and were 60% and 40% respectively [49]. Limited data exists on the outcome of MERS on pregnancy, however, available information showed that CFR of infected pregnant women was 27% and ICU admission was 64% [4, 50-54]. Our review of 287 pregnant women with COVID-19 showed no maternal mortality and ICU admission was reported in 5 of 161 cases (3%).

Studies showed that the decision for cesarean section in SARS and MERS affected pregnant women was made due to maternal hypoxemia, fetal distress, and some obstetrical indications such as placenta previa [4,51,55,56]. In this review, the majority of deliveries were done through cesarean section and 6.9% of pregnant women delivered by vaginal delivery. More than half of mentioned causes of cesarean section were COVID-19 infection and 15.4% of deliveries were done through cesarean section due to fetal distress. One important issue was that in most women who delivered by cesarean section due to COVID-19 infection cause, maternal condition did not deteriorate.

Vertical transmission from mother to child among pregnant women who were infected with SARS and MERS were not identified [4,57-60]. According to this review, there is no evidence to prove intrauterine or transplacental transmission of COVID-19 but possibility of mother-to-child vertical transmission was suggested due to positive RT-PCR test for SARS-Cov-2 in two newborns [29,35], elevated SARS-Cov-2 IgM antibodies in three neonates alongside negative RT-PCR [23,45], and virological findings in placenta in one case [46]. But some researchers stated that molecular tests based on nucleic acid amplification and detection are more reliable than IgM test to diagnose infections due to false-positive and false negative results, along with cross-reactivity and testing challenges of IgM assays [61].

Although no viral RNA was detected in breast milk of mothers infected with SARS and MERS who had been tested by RT-PCR, breast feeding in these mothers was not advised [4,53,56]. Chinese expert consensus on the perinatal and neonatal management for the prevention and control of Covid-19 infection states that mothers with

confirmed or who are suspected of Covid-19 should not feed their infants with breast milk. However, if the suspected or diagnosed mother and her breast milk test is negative for Covid-19, infants should be fed with breast milk [62]. Though COVID-19 has not been detected in breast milk samples in some studies [20,22,23,25,31], all newborns of mothers with COVID-19 were not breastfed according to available information. It seems that formula feeding could prevent neonates from the possible way of Covid-19 infection transmission through close contact with confirmed or suspected mothers.

Lack of report of some variables related to maternal and neonatal outcomes in several studies is one of the limitations of this review. The other one is low methodological quality of the studies which were included in this review. Maternal and neonatal assessment of a large number of cases (287 cases), consideration of some maternal and neonatal outcomes including cause of cesarean section, early maternal chest CT findings, fetal condition, neonatal asphyxia, newborn feeding in all studies and no limitation on language of published articles are strengths of the current review in comparison with three reviews that exist to date [63-66].

Conclusion

This review literature showed fewer adverse maternal and neonatal outcomes in pregnant women with COVID-19 in comparison with SARS and MERS infection in pregnancy. There is no evidence to prove vertical transmission of COVID-19 but possibility of mother-to-child vertical transmission was suggested due to positive test for SARS-Cov-2 in two neonates and one placental infection with SARS-Cov-2. Possibility of transmission during vaginal delivery is unknown due to small number of cases who delivered by vaginal delivery. Because of not reporting breastfeeding, risk of transmission during breast feeding is unknown if breast milk test of suspected or diagnosed mother with Covid-19 is negative.

Declaration of Competing Interest

The authors of this study declare that they each have no conflict of interest

Funding Statement

This research did not receive any specific grant from funding agencies in the public, commercial, or not-for-profit sectors.

References

- [1] World Health Organization. Novel Coronavirus (2019-nCoV) Situation report-9, 29 January 2020. Geneva, Switzerland. 2020.
- [2] Cucinotta D, Vanelli M. WHO Declares COVID-19 a Pandemic. *Acta Biomed* 2020; **91**(1):157-160.
- [3] Silasi M, Cardenas I, Kwon JY, Racicot K, Aldo P, Mor G . Viral infections during pregnancy. *Am J Reprod Immunol* 2015; **73**(3): 199–213.
- [4] Alserahi H, Wali G, Alshukairi A, Alraddadi B. Impact of Middle East Respiratory Syndrome coronavirus (MERS-CoV) on pregnancy and perinatal outcome. *BMC Infect Dis* 2016;**16**: 105.
- [5] Wong SF, Chow KM, Leung TN, Ng WF, Ng TK, Shek CC, et al. Pregnancy and perinatal outcomes of women with severe acute respiratory syndrome. *Am J Obstet Gynecol* 2004; **191**(1): 292-297.
- [6] Creanga AA, Johnson TF, Graitcer SB, Hartman LK, Al-Samarrai T, Schwarz AG, et al. Severity of 2009 pandemic influenza A (H1N1) virus infection in pregnant women. *Obstet Gynecol* 2010; **115**(4): 717-726.
- [7] Olgun NS. Viral Infections in Pregnancy: A Focus on Ebola Virus. *Curr Pharm Des* 2018; **24**(9): 993-998

- [8] Honein MA. Recognizing the Global Impact of Zika Virus Infection during Pregnancy. *N Engl J Med* 2018; **378**(11): 1055–1056.
- [9] Kourtis AP, Read JS, Jamieson DJ. Pregnancy and Infection. *N Engl J Med* 2014; **370**(23): 2211–2218.
- [10] Pazos M, Sperling RS, Moran TM, Kraus TA. The influence of pregnancy on systemic immunity. *Immunol Res* 2012; **54** (1-3):254–261.
- [11] Ostensen M, Villiger PM. Immunology of pregnancy-pregnancy as a remission inducing agent in rheumatoid arthritis. *Transpl Immunol* 2002; **9**(2-4):155–60.
- [12] van Well GTJ, Daalderop LA, Wolfs T, Kramer BW. Human perinatal immunity in physiological conditions and during infection. *Mol Cell Pediatr* 2017; **4**: 4.
- [13] Rugeles MT, Shearer GM. Alloantigen recognition in utero: dual advantage for the fetus? *Trends Immunol* 2004; **25**(7):348–352.
- [14] Adkins B, Leclerc C, Marshall-Clarke S. Neonatal adaptive immunity comes of age. *Nat Rev Immunol* 2004; **4**(7):553–564.
- [15] Koga K, Cardenas I, Aldo P, Abrahams VM, Peng B, Fill S, et al. Activation of TLR3 in the trophoblast is associated with preterm delivery. *Am J Reprod Immunol* 2009; **61**(3):196–212.
- [16] Cardenas I, Means RE, Aldo P, Koga K, Lang SM, Booth C, et al. Viral infection of the placenta leads to fetal inflammation and sensitization to bacterial products predisposing to preterm labor. *J Immunol* 2010; **185**(2):1248–1257.
- [17] Mor G, Cardenas I. The immune system in pregnancy: a unique complexity. *Am J Reprod Immunol* 2010; **63**(6): 425–433.
- [18] Petrosillo N, Viceconte G, Ergonul O, Ippolito G, Petersen E. COVID-19, SARS and MERS: are they closely related [published online ahead of print, 2020 Mar 28].? *Clin Microbiol Infect* 2020. doi:10.1016/j.cmi.2020.03.026
- [19] Liu D, Li L, Wu X, Zheng D, Wang J, Yang L, et al. Pregnancy and perinatal outcomes of women with Coronavirus Disease (COVID-19) Pneumonia: A Preliminary Analysis [published online ahead of print, 2020 Mar 18]. *AJR Am J Roentgenol* 2020:1-6. doi: 10.2214/AJR.20.23072.
- [20] Li Y, Zhao R, Zheng S, Chen X, Wang J, Sheng X, et al. Lack of Vertical Transmission of Severe Acute Respiratory Syndrome Coronavirus 2, China. *Emerg Infect Dis* 2020; **26**(6).
- [21] Chen Y, Peng H, Wang L, Zhao Y, Zeng L, Gao H et al. Infants Born to Mothers With a New Coronavirus (COVID-19). *Front Pediatr* 2020; **8**:104.
- [22] Chen H, Guo J, Wang C, Luo F, Yu X, Zhang W, et al. Clinical characteristics and intrauterine vertical transmission potential of COVID-19 infection in nine pregnant women: a retrospective review of medical records. *Lancet* 2020; **395**(10226):809-815.
- [23] Dong L, Tian J, He S, Zhu C, Wang J, Liu C, et al. Possible vertical transmission of SARS-CoV-2 From an Infected Mother to Her Newborn [published online ahead of print, 2020 Mar 26]. *JAMA* 2020. doi: 10.1001/jama.2020.4621.
- [24] Wang X, Zhou Z, Zhang J, Zhu F, Tang Y, Shen X. A case of 2019 Novel Coronavirus in a pregnant woman with preterm delivery [published online ahead of print, 2020 Feb 28]. *Clin Infect Dis* 2020. doi: 10.1093/cid/ciaa200.
- [25] Liu W, Wang Q, Zhang Q, Chen L, Chen J, Zhang B, et al. Coronavirus Disease 2019 (COVID-19) During Pregnancy: A Case Series [published online ahead of print, 2020 Feb 25]. *Preprints* 2020, 2020020373
- [26] Zhang L, Jiang Y, Wei M, Cheng BH, Zhou XC, Li J, et al. Analysis of the pregnancy outcomes in pregnant women with COVID-19 in Hubei Province. *Zhonghua Fu Chan Ke Za Zhi* 2020; **55**(0):E009. Full text in Chinese
- [27] Liu Y, Chen H, Tang K, Guo Y. Clinical manifestations and outcome of SARS-CoV-2 infection during pregnancy [published online ahead of print, 2020 Mar 4]. *J Infect* 2020. doi: 10.1016/j.jinf.2020.02.028.
- [28] Chen S, Liao E, Cao D, Gao Y, Sun G, Shao Y. Clinical analysis of pregnant women with 2019 novel coronavirus pneumonia [published online ahead of print, 2020 Mar 28]. *J Med Virol* 2020. doi: 10.1002/jmv.25789.
- [29] Yu N, Li W, Kang Q, Xiong Z, Wang S, Lin X, et al. Clinical features and obstetric and neonatal outcomes of pregnant patients with COVID-19 in Wuhan, China: a retrospective, single-centre, descriptive study [published online ahead of print, 2020 Mar 24]. *Lancet Infect Dis* 2020. doi: 10.1016/S1473-3099(20)30176-6.
- [30] Zhu H, Wang L, Fang C, Peng S, Zhang L, Chang G, et al. Clinical analysis of 10 neonates born to mothers with 2019-nCoV pneumonia. *Transl Pediatr* 2020; **9**(1):51-60.

- [31] Fan C, Lei D, Fang C, Li C, Wang M, Liu Y, et al. Perinatal Transmission of COVID-19 Associated SARS-CoV-2: Should We Worry [published online ahead of print, 2020 Mar 17]? *Clin Infect Dis* 2020. doi: 10.1093/cid/ciaa226.
- [32] Wen R, Sun Y, Xing QS. A patient with SARS-CoV-2 infection during pregnancy in Qingdao, China [published online ahead of print, 2020 Mar 10]. *J Microbiol Immunol Infect* 2020. doi: 10.1016/j.jmii.2020.03.004.
- [33] Liu H, Liu F, Li J, Zhang T, Wang D, Lan W. Clinical and CT imaging features of the COVID-19 pneumonia: Focus on pregnant women and children. *J Infect* 2020; **80** (5):e7-e13.
- [34] Li N, Han L, Peng M, Lv Y, Ouyang Y, Liu K, et al. Maternal and neonatal outcomes of pregnant women with COVID-19 pneumonia: a case-control study. *MedRxiv* 2020. doi: <https://doi.org/10.1101/2020.03.10.20033605>
- [35] Nie R, Wang S, Yang Q, Fan C, Liu Y, He W, et al. Clinical features and the maternal and neonatal outcomes of pregnant women with coronavirus disease 2019. *MedRxiv* 2020. doi: <https://doi.org/10.1101/2020.03.22.20041061>
- [36] Zhang Y, Chen R, Wang J, Gong Y, Zhou Q, Cheng H, et al. Anaesthetic management and clinical outcomes of parturients with COVID-19: a multicentre, retrospective, propensity score matched cohort study. *MedRxiv* 2020. doi: <https://doi.org/10.1101/2020.03.24.20042176>
- [37] Chen R, Zhang Y, Huang L, Cheng BH, Xia ZY, Meng QT. Safety and efficacy of different anesthetic regimens for parturients with COVID-19 undergoing Cesarean delivery: a case series of 17 patients [published online ahead of print, 2020 Mar 16]. *Can J Anaesth* 2020. doi: 10.1007/s12630-020-01630-7.
- [38] Chen S, Huang B, Luo DJ, Li X, Yang F, Zhao Y, et al. [Pregnant women with new coronavirus infection: a clinical characteristics and placental pathological analysis of three cases]. *Zhonghua Bing Li Xue Za Zhi* 2020; **49**(0):E005. Full text in Chinese.
- [39] Lee DH, Lee J, Kim E, Woo K, Park HY, An J. Emergency cesarean section on severe acute respiratory syndrome coronavirus 2 (SARS-CoV-2) confirmed patient [published online ahead of print, 2020 Mar 31]. *Korean J Anesthesiol* 2020. doi: 10.4097/kja.20116.
- [40] Xiong X, Wei H, Zhang Z, Chang J, Ma X, Gao X, et al. Vaginal Delivery Report of a Healthy Neonate Born to a Convalescent Mother with COVID-19 [published online ahead of print, 2020 Apr 10]. *J Med Virol* 2020. doi: 10.1002/jmv.25857.
- [41] Gidlöf S, Savchenko J, Brune T, Josefsson H. COVID-19 in pregnancy with comorbidities: More liberal testing strategy is needed [published online ahead of print, 2020 Apr 6]. *Acta Obstet Gynecol Scand* 2020. doi: 10.1111/aogs.13862.
- [42] Zambrano LI, Fuentes-Barahona IC, Bejarano-Torres DA, Bustillo C, Gonzales G, Vallecillo-Chinchilla G, et al. A pregnant woman with COVID-19 in Central America [published online ahead of print, 2020 Mar 25]. *Travel Med Infect Dis* 2020. doi: 10.1016/j.tmaid.2020.101639.
- [43] Breslin N, Baptiste C, Miller R, Fuchs K, Goffman D, Gyamfi-Bannerman C, et al. COVID-19 in pregnancy: early lessons [published online ahead of print, 2020 Mar 27]. *Am J Obstet Gynecol MFM* 2020. doi:10.1016/j.ajogmf.2020.100111
- [44] Iqbal SN, Overcash R, Mokhtari N, Saeed H, Gold S, Auguste T, et al. An Uncomplicated Delivery in a Patient with Covid-19 in the United States [published online ahead of print, 2020 Apr 1]. *New Engl J Med* 2020. doi: 10.1056/NEJMc2007605.
- [45] Zeng H, Xu C, Fan J, Tang Y, Deng Q, Zhang W, et al. Antibodies in Infants Born to Mothers With COVID-19 Pneumonia [published online ahead of print, 2020 Mar 26]. *JAMA* 2020. doi: 10.1001/jama.2020.4861.
- [46] Baud D, Greub G, Favre G, Gengler C, Jaton K, Dubruc E, et al. Second-Trimester Miscarriage in a Pregnant Woman With SARS-CoV-2 Infection [published online ahead of print, 2020 Apr 30]. *JAMA* 2020 Apr 30. doi:10.1001/jama.2020.7233
- [47] Wong SF, Chow KM, Leung TN, Ng WF, Ng TK, Shek CC, et al. Pregnancy and perinatal outcomes of women with severe acute respiratory syndrome. *Am J Obstet Gynecol* 2004; **191**(1):292-297.
- [48] Schwartz DA, Graham AL. Potential Maternal and Infant Outcomes from Coronavirus 2019-nCoV (SARS-CoV-2) Infecting Pregnant Women: Lessons from SARS, MERS, and Other Human Coronavirus Infections [published online ahead of print, 2020 Feb 10]. *Viruses* 2020; **12**(2): pii:E194. Published online 2020 Feb 10. doi: 10.3390/v12020194.
- [49] Lam CM, Wong SF, Leung TN, Chow KM, Yu WC, Wong TY, et al. A case-controlled study comparing clinical course and outcomes of pregnant and non-pregnant women with severe acute respiratory syndrome. *BJOG* 2004; **111**(8):771-774.

- [50] Jeong SY, Sung SI, Sung JH, Ahn SY, Kang ES, Chang YS, et al. MERS-CoV Infection in a Pregnant Woman in Korea. *J Korean Med Sci* 2017;**32**(10):1717-1720.
- [51] Assiri A, Abedi GR, Al Masri M, Bin Saeed A, Gerber SI, Watson JT. Middle East Respiratory Syndrome Coronavirus Infection During Pregnancy: A Report of 5 Cases From Saudi Arabia. *Clin Infect Dis* 2016;**63**(7):951–953.
- [52] Park MH, Kim HR, Choi DH, Sung JH, Kim JH. Emergency cesarean section in an epidemic of the middle east respiratory syndrome: a case report. *Korean J Anesthesiol* 2016;**69**(3):287–291.
- [53] Malik A, El Masry KM, Ravi M, Sayed F. Middle East Respiratory Syndrome Coronavirus during Pregnancy, Abu Dhabi, United Arab Emirates, 2013. *Emerg Infect Dis* 2016;**22**(3): 515–517.
- [54] Payne DC, Iblan I, Alqasrawi S, Al nsour M, Rha B, Tohme RA. Stillbirth during infection with Middle East Respiratory Syndrome Coronavirus. *J Infect Dis* 2014;**209**(12):1870–1872.
- [55] Robertson CA, Lowther SA, Birch T, Tan C, Sorhage F, Stockman L, et al. SARS and pregnancy: A case report. *Emerg Infect Dis* 2004;**10**(2): 345–348.
- [56] Stockman LJ, Lowther SA, Coy K, Saw J, Parashar UD. SARS during pregnancy, United States. *Emerg Infect Dis* 2004;**10**(9): 1689–1690.
- [57] Ng PC, So KW, Leung TF, Cheng FW, Lyon DJ, Wong W, et al. Infection control for SARS in a tertiary neonatal centre. *Arch Dis Child Fetal Neonatal Ed* 2003;**88**(5): F405–F409.
- [58] Ng PC, Leung CW, ChiuWK, Wong SF, Hon EK. SARS in newborns and children. *Biol Neonate* 2004;**85**(4): 293–298.
- [59] Shek CC, Ng PC, Fung GP, Cheng FW, Chan PK, Peiris MJ, et al. Infants born to mothers with severe acute respiratory syndrome. *Pediatrics* 2003;**112**(4): e254.
- [60] Li AM, Ng PC. Severe acute respiratory syndrome (SARS) in neonates and children. *Arch Dis Child Fetal Neonatal Ed* 2005;**90**(6): F461–F465.
- [61] Kimberlin DW, Stagno S. Can SARS-CoV-2 Infection Be Acquired In Utero? More Definitive Evidence Is Needed [published online ahead of print, 2020 Mar 26]. *JAMA* 2020.doi: 10.1001/jama.2020.4868.
- [62] Wang L, Shi Y, Xiao T, Fu J, Feng X, Mu D, et al. Chinese expert consensus on the perinatal and neonatal management for the prevention and control of the 2019 novel coronavirus infection (First edition). *Ann Transl Med* 2020;**8**(3): 47.
- [63] Zaigham M, Andersson O. Maternal and perinatal outcomes with COVID-19: a systematic review of 108 pregnancies [published online ahead of print, 2020 Apr 26]. *Acta Obstet Gynecol Scand* 2020. doi: 10.1111/aogs.13867.
- [64] Parazzini F, Bortolus R, Mauri PA, Favilli A, Gerli S, Ferrazzi E. Delivery in pregnant women infected with SARS-CoV-2: A fast review [published online ahead of print, 2020 Apr 9]. *Int J Gynaecol Obstet* 2020 Apr 9. doi: 10.1002/ijgo.13166.
- [65] Mullins E, Evans D, Viner RM, O'Brien P, Morris E. Coronavirus in pregnancy and delivery: rapid review [published online ahead of print, 2020 Mar 17]. *Ultrasound Obstet Gynecol* 2020. doi: 10.1002/uog.22014.
- [66] Arabi S, Vaseghi G, Heidari Z, Shariati L, Amin B, Rashid H, et al. Clinical characteristics of COVID-19 infection in pregnant women: a systematic review and meta-analysis. *MedRxiv* 2020. doi: 10.1101/2020.04.05.20053983.

Table 1 Characteristics of studies included in COVID-19 impact review on maternal and neonatal outcomes

Variable	Liu D et al ¹⁹	Li Y et al ²⁰	Chen Y et al ²¹	Chen H et al ²²
Time of study	Jan 20 to Feb 10 2020	Feb 6 2020	Feb 13 2020	Jan 20 to Jan 31 2020
Country	China	China	China	China
Type of study	Case series	Case report	Case series	Case series
N	15	1	4	9
Age range (y)/ (mean±SD)	23-40 (32 ± 5)	30	28-34	26-40
Median Gestational age week at presentation (range)/ (mean±SD)	12-38 (32 ± 8)	35	37-39	36-39
Stage of pregnancy				
1 st trimester	0	0	0	0
2 nd trimester	3	0	0	0
3 rd trimester	12	1	4	9
Women with comorbidities	GDM and thalassemia (1/15), mitral valve and tricuspid valve replacement (1/15), placenta previa (1/15)	0	cholecystitis (1/4), placenta previa (1/4)	gestational hypertension (1/9), pre-eclampsia (1/9), PROM (2/9)
Symptomatic at admission	13	1	4	9
Asymptomatic at admission	2	0	0	0
Common onset symptom	fever (13/15 patients) and cough (9/15 patients)	Dry cough	Fever (3/4)	Fever (7/9), cough (4/9)
Common abnormal laboratory finding	lymphocytopenia (12/15 patients)	None	lymphocytopenia (4/4 patients)	Lymphocytopenia (5/9)
Early chest CT / radiography finding	ground-glass opacity (GGO) (15/15)	scattered multiple patchy infiltrates in both lungs	GGO (4/4)	GGO (8/9)
ICU admission	NM	NM	NM	NM
Oxygen support	15	NM	1	9
Mechanical	0	0	0	0

ventilation				
Maternal death	0	0	0	0
Miscarriage	0	0	0	0
Stillbirth	0	0	0	0
Preterm delivery	NM	0	0	4/9
Intrauterine	NM	NM	NM	NM
growth restriction				
post infection				
Fetal condition	NM	Normal	Reduced fetal movement (1/4), Normal (3/4)	Fetal distress (2/9), Normal (7/9)
Type of delivery				
Cesarean	10	1	3	9
delivery				
Vaginal delivery	1	0	Onset of labor (1)	0
Cause of CS	NM	NM	placenta previa (1/4) Acute phase of COVID-19 disease (3/4)	COVID-19 pneumonia (9) Fetal distress (2/9), PROM (2/9), Pre-eclampsia (1/9), Hx of CS(1/9), Hx of stillbirth (1/9), Severely elevated ALT/ AST (1/9)
Comparison of chest CT image change before and after delivery	no sign of pneumonia aggravation	NM	NM	NM
Ongoing pregnancy	4	0	0	0
1 st trimester	0	0	0	0
2 nd trimester	3	0	0	0
3 rd trimester	1	0	0	0
Vertical transmission	None	None	None	None
Neonatal death	0	0	0	0
Neonatal asphyxia	0	0	0	0
Neonatal feeding	NM	NM	Formula	NM

Table 1 Continued

Variable	Dong L et al ²³	Wang X et al ²⁴	Liu W et al ²⁵	Zhang L et al ²⁶
Time of study	Feb 22 2020	Feb 2 2020	Feb 2 to Feb 5 2020	Jan 30 to Feb 17 2020
Country	China	China	China	China
Type of study	Case report	Case report	Case series	Case series
N	1	1	3	16
Age range (y)/ (mean±SD)	29	28	30-34	24-34
Median	34	30	38-40	35-41
Gestational age week at presentation (range)/ (mean±SD)				
Stage of pregnancy				
1 st trimester	0	0	0	0
2 nd trimester	0	0	0	0
3 rd trimester	1	1	3	16
Women with comorbidities	0	0	Hypothyroidism & epiglottic cysts (1/3), GDM (1/3)	Preeclampsia (1/16), GDM (3/16), PROM(3/16), NM
Symptomatic at admission	1	1	3	NM
Asymptomatic at admission	0	0	0	NM
Common onset symptom	Fever, nasal congestion	Fever	Fever (2/3), cough (1/3)	NM
Common abnormal laboratory finding	lymphocytopenia	lymphocytopenia	Lymphocytopenia (2/3)	NM
Early chest CT / radiography finding	GGO	GGO	GGO (3/3)	NM
ICU admission	0	1	0	NM
Oxygen support	1	1	3	NM
Mechanical ventilation	0	1	0	NM
Maternal death	0	0	0	0
Miscarriage	0	0	0	0
Stillbirth	0	0	0	0
Preterm delivery	1	1	0	3/16
Intrauterine growth	NM	NM	NM	NM

restriction post infection				
Fetal condition	NM	Fetal distress	Fetal distress (1/3), Normal (2/3)	Fetal distress & reduced fetal movement (1/16), Normal (15/16)
Type of delivery				
Cesarean delivery	1	1	2	16
Vaginal delivery	0	0	1	0
Cause of CS	NM	Disappeared fetal movement, no variability of FHR	COVID-19 pneumonia (2/3)	COVID-19 pneumonia (16/16)
Comparison of chest CT image change before and after delivery	NM	resolution of infiltrates of both lung	Progress of CT abnormalities (2/3), improvement of CT appearance (1/3)	Progress of CT abnormalities (9/16)
Ongoing pregnancy				
1 st trimester	0	0	0	0
2 nd trimester	0	0	0	0
3 rd trimester	0	0	0	0
Vertical transmission	Possible (elevated IgM and abnormal cytokine 2 h after birth in neonate)	None	None	None (10/16), NR (6/10)
Neonatal death	0	0	0	0
Neonatal asphyxia	0	0	0	1/16
Neonatal feeding	NM	formula	Formula (1/3), NM (2/3)	formula

Table 1 Continued

Variable	Liu Y et al ²⁷	Chen S ^a et al ²⁸	Yu N et al ²⁹	Zhu H et al ³⁰
Time of study	Dec 8 2019 to Feb 25 2020	Jan 20 to Feb 10 2020	Jan 1 to Feb 12 2020	Jan 20 to Feb 5 2020
Country	China	China	China	China
Type of study	Case series	Case series	Case series	Case series
N	13	5	7	9 mothers [1 twin]
Age range (y)/ (mean±SD)	22-36	25-31	29-34	25-35
Median	25-38	38-41	37-41	31-39
Gestational age week at presentation (range)/ (mean±SD)				
Stage of pregnancy				
1 st trimester	0	0	0	0
2 nd trimester	2	0	0	0
3 rd trimester	11	5	7	9
Women with comorbidities	0	GDM (2/5), Pre-eclampsia (1/5)	Hypothyroidism (1/7), PCO (1/7)	Placenta previa (1/9)
Symptomatic at admission	12	0	7	4
Asymptomatic at admission	1	5	0	5
Common onset symptom	Fever (10/12)	Fever (5/5)	Fever (6/7)	Fever (7/9)
Common abnormal laboratory finding	NM	Abnormally high WBC (5)	Lymphocytopenia (5/7)	NM
Early chest CT / radiography finding	NM	GGO (5/5)	GGO (7/7)	GGO (9/9)
ICU admission	1	0	0	0
Oxygen support	NM	0	7	NM
Mechanical ventilation	1	0	0	0
Maternal death	0	0	0	0
Miscarriage	0	0	0	0
Stillbirth	1	0	0	0
Preterm delivery	6/13	0	0	6/10
Intrauterine growth restriction post infection	NM	NM	NM	NM
Fetal condition	Fetal distress (3/10), Normal (7/10)	Fetal tachycardia (1/5), Normal (4/5)	Normal (7/7)	Fetal distress (6/9), Normal(3/9)

Type of delivery				
Cesarean delivery	10	2	7	7
Vaginal delivery	0	3	0	2
Cause of CS	Fetal distress (3/10), PROM (1/10), stillbirth (1/10)	fetal tachycardia (1), GDM (1)	NM	Fetal distress (6/9), placenta previa (1/9)
Comparison of chest CT image change before and after delivery	NM	NM	NM	NM
Ongoing pregnancy				
1 st trimester	0	0	0	0
2 nd trimester	2	0	0	0
3 rd trimester	1	0	0	0
Vertical transmission	None (9/13) , NM (3/13)	None	None (2/3), NM (4/7), Positive (1/3, 36 h after birth)	None
Neonatal death	0	0	0	1/10
Neonatal asphyxia	0	0	0	6/10
Neonatal feeding	NM	Formula (5/5)	NM	NM

Table 1 Continued

Variable	Fan C et al ³¹	Wen R et al ³²	Liu H et al ³³	Li N et al ³⁴
Time of study	Jan 17 to Jan 23 2020	4 Feb 2020	Jan 27 to Feb 14 2020	Jan 24 to Feb 29 2020
Country	China	China	China	China
Type of study	Case series	Case report	Retrospective clinical series	Case- control study
N	2	1	41 [laboratory-confirmed (16), clinically-diagnosed (25)]	16 mothers [1 twin]
Age range (y)/ (mean±SD)	29-34	31	22-42	26-37
Median	36-37	30	22-40	33-40
Gestational age week at presentation (range)/ (mean±SD)				
Stage of pregnancy				
1 st trimester	0	0	0	0
2 nd trimester	0	0	NM	0
3 rd trimester	2	1	NM	16
Women with comorbidities	0	0	GDM (1/41), Gestational hypertension (3/41), hepatitis B (1/41)	Gestational hypertension (3/16), hypothyroidism (2/16), preclampsia (1/16), Sinus tachycardia (1/16)
Symptomatic at admission	2	1	NM	4/16
Asymptomatic at admission	0	0	NM	12/16
Common onset symptom	Fever (2/2)	Mild diarrhea	Fever (16/41)	Fever (4/16)
Common abnormal laboratory finding	Lymphocytopenia (2/2)	None	Lymphocytopenia (25/41), Elevated C-reactive protein (27/41)	Lymphocytopenia (2/16), Elevated C-reactive protein (5/16)
Early chest CT / radiography finding	GGO (2/2)	GGO	GGO (30/41)	GGO (10/16)
ICU admission	0	0	0	0
Oxygen support	0	0	NM	NM

Mechanical ventilation	0	0	0	0
Maternal death	0	0	0	0
Miscarriage	0	0	0	0
Stillbirth	0	0	NM	NM
Preterm delivery	1	0	NM	4/17
Intrauterine growth restriction post infection	NM	NM	NM	NM
Fetal condition	NM	Normal	Normal	Fetal distress (1/17), Normal (16/17)
Type of delivery				
Cesarean delivery	2	0	16	14
Vaginal delivery	0	0	0	2
Cause of CS	NM	None	NM	COVID-19 pneumonia (14/16)
Comparison of chest CT image change before and after delivery	resolution of infiltrates of both lung (2/2)	-----	NM	NM
Ongoing pregnancy			25	
1 st trimester	0	0	0	0
2 nd trimester	0	0	NM	0
3 rd trimester	0	1	NM	0
Vertical transmission	None	-----	NM	0/3), NM None ((14/17)
Neonatal death	0	0	NM	0
Neonatal asphyxia	0	-----	NM	0
Neonatal feeding	Formula (2/2)	-----	NM	NM

Table 1 Continued

Variable	Nie R et al ³⁵	Zhang Y et al ³⁶ , Chen R et al ^{37*}	Chen S et al ³⁸	Lee DH et al ³⁹
Time of study	Jan 1 to Feb 29 2020	Feb 15 to March 20 2020	Feb 4 2020	Jan 19 2020
Country	China	China	China	Korea
Type of study	Case series	Retrospective clinical series ¹⁸ , Case series ¹⁹	Case series	Case report
N	33 [1 twin]	89 [1 twin]	3	1
Age range (y)/ (mean±SD)	24-36	31.56±3.81	23-34	28
Median Gestational age week at presentation (range)/ (mean±SD)	17-NM	38.31±1.40	35-38	37
Stage of pregnancy				
1 st trimester	0	0	0	0
2 nd trimester	3	NM	0	0
3 rd trimester	30	NM	3	1
Women with comorbidities	Cardiovascular & cerebrovascular diseases (9/33), Digestive system disease (1/33), Endocrine system disease (2/33), Nervous system disease (1/33), infectious disease (1/33), Depressive disorder (1/33)	Anemia (5/17)*, Hypertension (1/17), Diabetes (2/17), NM (72/89)	Placenta previa (2/3), acute cholecystitis (1/3)	None
Symptomatic at admission	29	NM	1/3	1
Asymptomatic at admission	4	NM	2/3	0
Common onset symptom	Fever (21/33)	Fever (31/89)	Fever (1/3)	Mild cough (1/1)
Common abnormal laboratory finding	NM	Lymphocytopenia (30/89), Elevated C- reactive protein (47/89)	Elevated C- reactive protein (3/3)	Slightly elevated ESR (1/1)
Early chest CT / radiography	Bilateral Pneumonia	GGO (89/89)	GGO (3/3)	GGO

finding	(13/33), unilateral pneumonia (14/33), GGO (5/33)			
ICU admission	1	0	0	0
Oxygen support	29/33	89/89	NM	0
Mechanical ventilation	1	NM	NM	0
Maternal death	0	0	0	0
Miscarriage	Induced abortion due to personal reasons (1/33)	0	0	0
Stillbirth	0	0	0	0
Preterm delivery	10/28	(3/17)*	1/3	0
Intrauterine growth restriction post infection	NM	NM	NM	NM
Fetal condition	Fetal distress (4/28), Normal (24/28)	NM	NM	Normal
Type of delivery				
Cesarean delivery	22/33	89/89	3/3	1
Vaginal delivery	5/33	0	0	0
Cause of CS	PROM (3/22), gestational hypertension (2/22), GDM (2/22), preterm labor (1/22)	NM	Placenta previa (2/3), cholecystitis & placenta abruption (1/3)	obstructed labor with incomplete rotation of the fetal head (1/1)
Comparison of chest CT image change before and after delivery	NM	NM	NM	NM
Ongoing pregnancy				
1 st trimester	0	0	0	0
2 nd trimester	0	0	0	0
3 rd trimester	5	0	0	0
Vertical transmission	None (25/26), NM (2/28), positive (1/28, 53h after birth)	None	None (3/3)	None (1/1)
Neonatal death	0	0	0	0
Neonatal asphyxia	0	0	0	0
Neonatal feeding	Formula (28/28)	NM	NM	NM

Table 1 Continued

Variable	Xiong X et al ⁴⁰	Gidlöf S et al ⁴¹	Zambrano LI et al ⁴²	Breslin N et al ⁴³
Time of study	Jan 29 2020	April 6 2020	March 9 2020	March 2020
Country	China	Sweden	Central America	United States
Type of study	Case report	Case report	Case report	Case series
N	1	1 (twin)	1	7
Age range (y)/ (mean±SD)	25	34	41	27-39
Median	38	36	31	26-37
Gestational age week at presentation (range)/ (mean±SD)				
Stage of pregnancy				
1 st trimester	0	0	0	0
2 nd trimester	0	0	0	2
3 rd trimester	1	1	1	5
Women with comorbidities	0	GDM & severe preeclampsia(1/1)	Gestational hypertension & hypothyroidism (1/1)	Diabetes mellitus & chronic hypertension (2/7), asthma (1/7)
Symptomatic at admission	1	1	1	5/7
Asymptomatic at admission	0	0	0	2/7
Common onset symptom	Fever, dry cough, shivering	Fever	Fever, dry cough	Cough (3/3), fever (2/2)
Common abnormal laboratory finding	Lymphocytopenia (1/1)	None	NM	NM
Early chest CT / radiography finding	GGO	GGO	NM	ill-defined hazy opacities & basilar atelectasis (1/7)
ICU admission	0	0	0	2/7
Oxygen support	0	1	0	1/7
Mechanical ventilation	0	0	0	1/7
Maternal death	0	0	0	0
Miscarriage	0	0	0	0

Stillbirth	0	0	0	0
Preterm delivery	0	2	1	0
Intrauterine growth restriction post infection	NM	NM	NM	NM
Fetal condition	Normal	Normal	dysplastic and multicystic right kidney (1/1)	NM
Type of delivery				
Cesarean delivery	0	1	0	2/7
Vaginal delivery	1	0	1	0
Cause of CS	----	Severe preeclampsia	Preterm delivery	Arrest of descent (1/7), Failed induction (1/7)
Comparison of chest CT image change before and after delivery	NM	NM	NM	NM
Ongoing pregnancy				
1 st trimester	0	0	0	0
2 nd trimester	0	0	0	2/7
3 rd trimester	0	0	0	3/7
Vertical transmission	None	None	None	None (2/7)
Neonatal death	0	0	0	0/2
Neonatal asphyxia	0	0	0	0/2
Neonatal feeding	NM	Formula (2/2)	NM	NM (2/7)

Table 1 Continued

Variable	Iqbal SN et al ⁴⁴	Zeng H et al ⁴⁵	Baud D et al ⁴⁶
Time of study	April 1, 2020	Feb 16 to March 6 2020	March 20, 2020
Country	United States	China	Switzerland
Type of study	Case report	Case series	Case report
N	1	6	1
Age range (y)/ (mean±SD)	34	NM	28
Median Gestational age week at presentation (range)/ (mean±SD)	39	NM	19
Stage of pregnancy			
1 st trimester	0	0	0
2 nd trimester	0	0	1
3 rd trimester	1	6	0
Women with comorbidities	0	NM	0
Symptomatic admission	at 0	NM	Fever
Asymptomatic admission	at 1	NM	0
Common symptom onset	Fever	NM	Fever, dry cough, diarrhea, myalgia, fatigue
Common abnormal laboratory finding	Lymphocytopenia (1/1)	NM	NM
Early chest CT / radiography finding	Reticular interstitial opacities	GGO (6/6)	NM
ICU admission	0	0	0
Oxygen support	0	0	0
Mechanical ventilation	0	0	0
Maternal death	0	0	0
Miscarriage	0	0	1
Stillbirth	0	0	0
Preterm delivery	0	NM	0
Intrauterine growth restriction post infection	NM	NM	0
Fetal condition	decreased fetal movements	NM	Tachycardia
Type of delivery			
Cesarean delivery	0	6	0
Vaginal delivery	1	0	1
Cause of CS	----	NM	----
Comparison of chest CT image change before and after delivery	NM	NM	NM
Ongoing pregnancy			
1 st trimester	0	0	0
2 nd trimester	0	0	0

3 rd trimester	0	0	0
Vertical transmission	None	None	None
Neonatal death	0	0	---
Neonatal asphyxia	0	0	---
Neonatal feeding	Formula	NM	---

Appendix 1:

PubMed search strategy:

("2019-nCoV infection"[all] OR "coronavirus disease 2019"[all] OR "COVID-19 pandemic"[all] OR "2019-nCoV disease"[all] OR "2019 novel coronavirus disease"[all] OR "COVID19"[all] OR "2019 novel coronavirus infection"[all] OR "coronavirus disease-19"[all] OR "severe acute respiratory syndrome coronavirus 2"[all] OR "SARS-CoV-2"[all]) AND (pregnancy[all] OR "pregnant women"[all] OR maternal[all] OR "prenatal care"[all]) AND (2019/10/01:2020/04/30[dp])

Scopus search strategy:

(ALL("2019-nCoV infection") OR ALL("coronavirus disease 2019") OR ALL("COVID-19 pandemic") OR ALL("2019-nCoV disease") OR ALL("2019 novel coronavirus disease") OR ALL("COVID19") OR ALL("2019 novel coronavirus infection") OR ALL("coronavirus disease-19") OR ALL("severe acute respiratory syndrome coronavirus 2") OR ALL("SARS-CoV-2")) AND (ALL(pregnancy) OR ALL("pregnant women") OR ALL(maternal) OR ALL("prenatal care")) AND (PUBDATETXT("October 2019" OR "November 2019" OR "December 2019" OR "January 2020" OR "February 2020" OR "March 2020" OR "April 2020"))

WOS search strategy

(ALL=("2019-nCoV infection") OR ALL=("coronavirus disease 2019") OR ALL=("COVID-19 pandemic") OR ALL=("2019-nCoV disease") OR ALL=("2019 novel coronavirus disease") OR ALL=("COVID19") OR ALL=("2019 novel coronavirus infection") OR ALL=("coronavirus disease-19") OR ALL=("severe acute respiratory syndrome coronavirus 2") OR ALL=("SARS-CoV-2")) AND (ALL=(pregnancy) OR ALL=("pregnant women") OR ALL=(maternal) OR ALL=("prenatal care")) AND PY=(2019-2020)