

1 **Bacteremia and Blood Culture Utilization During COVID-19 Surge in New York City**

2
3 Jorge Sepulveda, MD, PhD¹, Lars F. Westblade, PhD^{2,3}, Susan Whittier, PhD¹, Michael J. Satlin, MD³,
4 William G. Greendyke, MD⁴, Justin G. Aaron, MD⁴, Jason Zucker, MD⁴, Donald Dietz, MD⁴, Magdalena
5 Sobieszczyk, MD⁴, Justin J. Choi, MD³, Dakai Liu, PhD⁵, Kelvin Espinal, BA⁶, Sarah Russell, BA⁶,
6 Dennis Camp, BA⁶, Charles Connelly, BS⁶, Daniel A. Green, MD^{1, #}

7
8 ¹Department of Pathology & Cell Biology, Columbia University Irving Medical Center, New York, NY

9 ²Department of Pathology and Laboratory Medicine, Weill Cornell Medicine, New York, NY

10 ³Division of Infectious Diseases, Department of Internal Medicine, Weill Cornell Medicine, New York,
11 NY

12 ⁴Division of Infectious Diseases, Department of Internal Medicine, Columbia University Irving Medical
13 Center, New York, NY

14 ⁵Department of Pathology and Clinical Laboratories, NewYork-Presbyterian Queens Hospital

15 ⁶Clinical Laboratories, NewYork-Presbyterian Hospital, New York, NY

16

17 Keywords: COVID-19, SARS-CoV-2, Bacteremia, Sepsis, Blood Culture

18 Running Title: Blood Culture COVID-19

19

20 #Address correspondence to:

21 Daniel A. Green, M.D.

22 3959 Broadway

23 Microbiology, CHONY C-324

24 New York, NY 10032

25 (212)-305-6301

26 dag2149@cumc.columbia.edu

27 **Abstract:**

28 A surge of patients with coronavirus disease 2019 (COVID-19) presenting to New York City hospitals in
29 March 2020 led to a sharp increase in the utilization of blood cultures, which overwhelmed the capacity
30 of automated blood culture instruments. We sought to evaluate the utilization and diagnostic yield of
31 blood cultures during the COVID-19 pandemic to determine prevalence and common etiologies of
32 bacteremia, and to inform a diagnostic approach to relieve blood culture overutilization. We performed a
33 retrospective cohort analysis of 88,201 blood cultures from 28,011 patients at a multicenter network of
34 hospitals within New York City to evaluate order volume, positivity rate, time to positivity, and etiologies
35 of positive cultures in COVID-19. Ordering volume increased by 34.8% in the second half of March 2020
36 compared to the first half of the month. The rate of bacteremia was significantly lower among COVID-19
37 patients (3.8%) than COVID-19 negative patients (8.0%) and those not tested (7.1%), $p < 0.001$.
38 COVID-19 patients had a high proportion of organisms reflective of commensal skin microbiota,
39 reducing the bacteremia rate to 1.6% when excluded. More than 98% of all positive cultures were
40 detected within 4 days of incubation. Bloodstream infections are very rare for COVID-19 patients, which
41 supports the judicious use of blood cultures in the absence of compelling evidence for bacterial co-
42 infection. Clear communication with ordering providers is necessary to prevent overutilization of blood
43 cultures during COVID-19 surges, and laboratories should consider shortening the incubation period from
44 5 days to 4 days to free additional capacity.

45

46

47

48

49

50

51

52

53 **Introduction:**

54

55 The rapid spread of severe acute respiratory syndrome coronavirus 2 (SARS-CoV-2) across New
56 York City in March 2020 led to an unprecedented strain on hospital resources, including shortages of
57 beds, ventilators, personal protective equipment, and diagnostic materials such as laboratory reagents and
58 nasopharyngeal swabs¹⁻³. The surge of febrile patients to our network of hospitals in New York City led
59 to a sudden and dramatic increase in the number of blood cultures received in our laboratories, which
60 overwhelmed the capacity of our automated blood culture instruments.

61 While blood cultures are an essential tool for the diagnosis and management of bloodstream
62 infections among patients presenting to the emergency department and among inpatients, data are lacking
63 on their utility for patients with suspected or confirmed coronavirus disease 19 (COVID-19). While many
64 patients with severe COVID-19 are treated with empiric antibiotics for potential bacterial co-infections,
65 the rate of bacteremia among these patients is unknown, and the benefit of empiric antibiotic therapy is
66 unproven. Frequent ordering of blood cultures for patients with COVID-19 may overwhelm a laboratory's
67 capacity to perform and result these tests, which may negatively impact the overall benefit of testing for
68 the entire medical center. Therefore, we sought to evaluate both the utilization and diagnostic yield of
69 blood cultures during a surge of COVID-19 patients presenting to our hospitals, including positivity rates
70 for patients with and without COVID-19, as well as the most common causes of bacteremia among
71 COVID-19 patients. We also relay strategies for diagnostic stewardship to mitigate challenges that may
72 arise from a surge of blood culture orders.

73

74 **Methods:**

75

76 *Study Design:*

77

78 A retrospective cohort study was conducted on patients with blood cultures performed at
79 NewYork-Presbyterian Hospitals located throughout New York City from January 1, 2020 to March 31,
80 2020. Corresponding data from January 1, 2019 to March 31, 2019 were collected to establish a seasonal
81 historic baseline of blood culture ordering and positivity. Records were extracted from the laboratory
82 information system (Cerner Millennium, Cerner, North Kansas City, MO) using a Cerner Command
83 Language query and included information on performing facility, SARS-CoV-2 reverse transcription-
84 polymerase chain reaction (RT-PCR) result, blood culture result, organism(s) identified, and blood culture
85 collection date and time. After the study period concluded, the blood culture incubation period was
86 reduced from 5 days to 4 days to free additional space on the instruments. In a subset of patients for
87 whom data were available, the interval from time of blood culture collection to time of Gram stain was
88 used to calculate the time to blood culture positivity during the study period, which was used to examine
89 the predicted effect of this intervention.

90

91 *Laboratory Methods:*

92

93 Blood cultures were incubated on BACTEC FX (Becton, Dickinson and Co., Franklin Lakes, NJ)
94 or VersaTrek (Thermo Fisher Scientific, Inc., Waltham, MA) instruments for a maximum of 5 days.
95 SARS-CoV-2 RT-PCR testing was performed in-house with the following assays: cobas SARS-CoV-2
96 (Roche Molecular Systems, Inc., Branchburg, NJ), Xpert Xpress SARS-CoV-2 (Cepheid, Sunnyvale,
97 CA), RealStar SARS-CoV-2 (Altona Diagnostics USA, Inc., Plain City, OH), and a laboratory-developed
98 test developed by the Wadsworth Center at the New York State Department of Health.

99

100 *Participants:*

101

102 A total of 88,201 blood cultures from 28,011 patients were included from the following hospitals
103 within the NewYork-Presbyterian network: Columbia University Irving Medical Center (32,788), Weill-

104 Cornell Medical Center (26,794), Allen Hospital (6,053), Queens Hospital (16,913), and Lower
105 Manhattan Hospital (5,653). Patients were stratified by SARS-CoV-2 RT-PCR result as positive,
106 negative, or not tested. For the purposes of classifying blood cultures by SARS-CoV-2 RT-PCR status,
107 we used the following criteria:

108 1. Blood cultures were labeled as SARS-CoV-2 status “Positive” if the blood culture was
109 performed within 2 days of a positive SARS-CoV-2 RT-PCR result and for all subsequent blood
110 cultures after a positive SARS-CoV-2 RT-PCR result.

111 2. Blood cultures were labeled as SARS-CoV-2 status “Negative” if the blood culture was
112 performed within 2 days of a negative SARS-CoV-2 RT-PCR result and for all subsequent blood
113 cultures, unless the patient had a subsequent positive SARS-CoV-2 RT-PCR result, for which the
114 status was changed to “Positive” for any blood cultures performed within 2 days of the positive
115 SARS-CoV-2 RT-PCR result.

116 3. All other blood cultures were labeled as SARS-CoV-2 status “Not tested.”

117 The 2-day interval was used to account for turnaround time from test ordering to SARS-CoV-2 test
118 results, as blood culture and SARS-CoV-2 RT-PCR tests ordered on the same day may have taken up to 2
119 days for the SARS-CoV-2 RT-PCR result to become available.

120

121 This study was approved by the Institutional Review Boards of Columbia University Irving Medical
122 Center and Weill-Cornell Medicine.

123

124 *Data Analysis:*

125 All data analysis was performed with the R statistical language version 3.6.3 (*R Core Team*
126 (2020). *R: A language and environment for statistical computing*. R Foundation for Statistical
127 Computing, Vienna, Austria. URL <https://www.R-project.org>). Blood culture volumes and positivity rates
128 were calculated and graphed by day, with a moving regression line estimated by the default *geom_smooth*
129 function of the *ggplot2* R package version 3.3.0, namely locally estimated scatterplot smoothing (LOESS)

130 for data with less than 1000 points and generalized additive model (GAM) for data with more than 1000
131 points. The regression lines were overlaid in the scatterplot to analyze directional trends.

132 Volumes and positivity rates were also stratified by SARS-CoV-2 RT-PCR result using the rules
133 specified above, and by various patient categories. Bacterial and fungal etiologies of blood cultures were
134 also collected and stratified by SARS-CoV-2 RT-PCR result. Differences in continuous data between
135 groups were assessed by one-way analysis of variation (ANOVA), whereas categorical data were
136 analyzed by Pearson's chi-squared analysis. Categorical data were graphed by the *assoc* function of the
137 *vcd* R package (version 1.4.7) and colored according to Pearson's residuals to demonstrate sources of
138 difference between observed and expected proportions in different groups.

139

140 **Results:**

141

142 *Blood Culture Volumes and Positivity Rate:*

143

144 During the study period, blood culture volumes rose substantially during the month of March
145 2020 (**Figure 1**). Overall, 8,784 blood cultures were performed during the second half of March 2020,
146 representing a 34.8% increase from the first half of the month. Patients who were positive for SARS-
147 CoV-2 accounted for the majority of the increased blood culture ordering. Notably, the increased ordering
148 among COVID-19 patients was not primarily attributable to repeated ordering, as 48.2% of COVID-19
149 patients had more than 2 blood culture sets drawn, compared to 66.2% of COVID-19 negative patients
150 and 62.1% of patients not tested for SARS-CoV-2 ($p < 0.001$, **Supplemental Tables 1 and 2**)

151 The blood culture positivity rate was significantly lower for patients that tested positive for
152 SARS-CoV-2 (3.8%) than for patients that tested negative for SARS-CoV-2 (8.0%) or for patients that
153 were not tested (7.1%, $p < 0.001$, **Table 1**). As additional COVID-19 patients presented to the hospital
154 throughout the month of March 2020, the overall rate of blood culture positivity continued to decrease
155 further (**Figure 2**).

156

157 *Etiologies of Bacteremia:*

158

159 Among patients with positive blood cultures, COVID-19 patients had a significantly higher
160 proportion of cultures that likely represented contamination with normal skin microbiota than all other
161 groups (**Figure 3 and Table 2**). Organisms were labeled as likely contaminants if they were isolated only
162 once per patient and belonged to groups generally defined as commensal skin microbiota.⁴ Coagulase-
163 negative *Staphylococcus* species accounted for 59.7% of all positive cultures among COVID-19 patients,
164 compared to 32.0% among patients that tested negative for SARS-CoV-2, and 29.8% among patients that
165 were not tested for SARS-CoV-2 in 2020 ($p < 0.001$). *Corynebacterium* species, *Bacillus* species, and
166 *Micrococcus* species were also seen more frequently among COVID-19 patients (**Supplemental Table**
167 **3**). When potential contaminants were excluded, the rate of bacteremia for COVID-19 patients decreased
168 to 1.6%, which was significantly lower than the rate of bacteremia excluding contaminants among
169 COVID-19 negative patients (5.9%) and during the same period in 2019 (5.7%, $p < 0.001$, **Table 3**). The
170 most common causes of true bacteremia among COVID-19 patients were *Escherichia coli* (16.7%),
171 *Staphylococcus aureus* (13.3%), *Klebsiella pneumoniae* (10.0%), and *Enterobacter cloacae* complex
172 (8.3%) (**Supplemental Table 3**). None of these pathogens were overrepresented among COVID-19
173 patients compared to the other groups.

174

175 *Incubation Period:*

176

177 Among the subset of 1859 positive blood cultures for which incubation period could be reliably
178 assessed, the vast majority (88.2%) signaled positive within 1-2 days of incubation, with an additional
179 7.0% signaling positive on day 3 and 3.0% signaling positive on day 4 (**Figure 4 and Supplemental**
180 **Table 4**). Only 1.8% of all blood cultures signaled positive on day 5, many of which yielded normal skin
181 microbiota (**Supplemental Table 5**). Among COVID-19 patients, 97.3% of positive cultures signaled

182 positive within 3 days of incubation, with one culture positive on the 4th day for *Cutibacterium acnes* and
183 one culture positive on the 5th day for *Candida albicans*.

184

185 **Discussion:**

186

187 Beginning in March 2020, a surge of COVID-19 patients presenting to our network of hospitals
188 in New York City, the current epicenter of the global COVID-19 pandemic⁵, led to a dramatic increase in
189 the utilization of blood cultures. In patients presenting with severe febrile illness, blood cultures are
190 essential in ruling out bacterial infection and guiding appropriate antibiotic utilization. However, we
191 found a very low rate of bacteremia among patients diagnosed with COVID-19, implying a remarkably
192 low diagnostic yield of blood cultures for COVID-19 patients. When excluding likely contaminants,
193 COVID-19 patients had bacteremia rates that were less than one third of the baseline rate from 2019.
194 These data demonstrate that bloodstream infections appear to be very rare for COVID-19 patients, and
195 suggest that empiric antibiotics may not be useful in the absence of compelling evidence of an
196 accompanying bacterial infection. Notably, we did not evaluate other bacterial infections such as bacterial
197 pneumonia, although other studies have shown low levels of procalcitonin among COVID-19 patients,
198 arguing that bacterial superinfection may be uncommon⁶⁻⁸.

199 As medical centers across the United States prepare for anticipated waves of COVID-19 patients,
200 our data may be used to justify the judicious utilization of blood cultures to preserve the operational
201 capacity of diagnostic laboratories and to promote antimicrobial stewardship efforts to reduce
202 unnecessary antibiotic administration. Overordering of blood cultures during a COVID-19 surge within
203 our hospital network resulted in culture volumes that exceeded the capacity of our automated instruments,
204 requiring additional staff to manually process these cultures at a time when staffing and supplies were
205 already constrained. Our experience should serve as a caution to other medical centers that overordering
206 of blood cultures during patient surges can overwhelm laboratory capacity and may negatively impact the
207 quality of results for all patients.

208 As a harm-reduction measure, we decreased the incubation period of blood cultures from 5 days
209 to 4 days after the study period concluded, which freed additional space to allow for timely processing of
210 incoming cultures. Our data demonstrate that this intervention likely had little to no adverse effect on
211 patient care, as all but one COVID-19 patients with positive cultures during the study period signaled
212 positive within 4 days, and only 1.8% of all positive cultures signaled positive on the 5th day, many of
213 which were positive for normal skin microbiota. Previous studies have also shown that decreasing the
214 incubation of blood cultures to 4 days⁹ or even 3 days^{10,11} has minimal effect on positivity rates,
215 particularly for clinically significant bacteria.

216 To our knowledge, this study is the first to examine blood culture utilization among COVID-19
217 patients. The inclusion of over 88,000 patient cultures is a major strength of the study design, as is the
218 multicenter analysis from a wide geographic catchment area in New York City, which increases the
219 generalizability of our results. Limitations of the study include paucity of data on other bacterial co-
220 infections and lack of data on patient antibiotic utilization to demonstrate how blood culture utilization
221 impacted therapy.

222 In summary, we observed an overutilization of blood cultures during a surge of COVID-19
223 patients to our network of medical centers in New York City and found a very low rate of bloodstream
224 infections among COVID-19 patients. This overutilization was mitigated through a 4 day incubation with
225 likely minimal impact on patient care. Clear communication with ordering providers and hospital
226 leadership regarding the low yield of blood cultures is a necessary step to mitigate overordering and to
227 preserve laboratory functionality during these periods. Laboratories should also consider reducing the
228 incubation period of blood cultures from 5 days to 4 days to further increase their capacity.

229

230 **Acknowledgments:**

231 *Potential conflicts of interest:* J.J.C. has received research support from Roche Diagnostics. All other
232 authors have no conflicts.

233

234 **References:**

235

- 236 1. Fomsgaard AS, Rosenstjerne MW. An alternative workflow for molecular detection of
237 SARS-CoV-2 - escape from the NA extraction kit-shortage, Copenhagen, Denmark, March
238 2020. *Euro Surveill.* 2020;25(14).
- 239 2. Newton PN, Bond KC, signatories from c. COVID-19 and risks to the supply and quality of
240 tests, drugs, and vaccines. *Lancet Glob Health.* 2020.
- 241 3. Ranney ML, Griffeth V, Jha AK. Critical Supply Shortages - The Need for Ventilators and
242 Personal Protective Equipment during the Covid-19 Pandemic. *N Engl J Med.* 2020.
- 243 4. Horan TC, Andrus M, Dudeck MA. CDC/NHSN surveillance definition of health care-
244 associated infection and criteria for specific types of infections in the acute care setting.
245 *Am J Infect Control.* 2008;36(5):309-332.
- 246 5. New York City Department of Health COVID-19 Data.
247 <https://www1.nyc.gov/site/doh/covid/covid-19-data.page>. Accessed April 21, 2020.
- 248 6. Guan WJ, Ni ZY, Hu Y, et al. Clinical Characteristics of Coronavirus Disease 2019 in China.
249 *N Engl J Med.* 2020.
- 250 7. Lippi G, Plebani M. Procalcitonin in patients with severe coronavirus disease 2019
251 (COVID-19): A meta-analysis. *Clin Chim Acta.* 2020;505:190-191.
- 252 8. Lippi G, Plebani M. Laboratory abnormalities in patients with COVID-2019 infection. *Clin*
253 *Chem Lab Med.* 2020.

- 254 9. Doern GV, Brueggemann AB, Dunne WM, Jenkins SG, Halstead DC, McLaughlin JC. Four-
255 day incubation period for blood culture bottles processed with the Difco ESP blood
256 culture system. *J Clin Microbiol.* 1997;35(5):1290-1292.
- 257 10. Bourbeau PP, Foltzer M. Routine incubation of BacT/ALERT FA and FN blood culture
258 bottles for more than 3 days may not be necessary. *J Clin Microbiol.* 2005;43(5):2506-
259 2509.
- 260 11. Bourbeau PP, Pohlman JK. Three days of incubation may be sufficient for routine blood
261 cultures with BacT/Alert FAN blood culture bottles. *J Clin Microbiol.* 2001;39(6):2079-
262 2082.
- 263
264
265
266
267
268
269
270
271
272
273
274
275
276
277

278 **Tables**

279 **Table 1A** - Distribution of blood culture results by SARS-CoV-2 status

SARS-CoV-2 Status	Jan-Feb, 2019 (N=29019)	Mar 1-15, 2019 (N=7601)	Mar 16-31, 2019 (N=7688)	Jan-Feb, 2020 (N=28593)	Mar 1-15, 2020 (N=6518)	Mar 16-31, 2020 (N=8784)	Total (N=88203)
Not tested							
<i>Negative</i>	27022 (93.1%)	7074 (93.1%)	7065 (91.9%)	26520 (92.7%)	5556 (93.5%)	1779 (93.8%)	75016 (92.9%)
<i>Positive</i>	1997 (6.9%)	527 (6.9%)	623 (8.1%)	2073 (7.3%)	386 (6.5%)	117 (6.2%)	5723 (7.1%)
Negative							
<i>Negative</i>	0	0	0	0	431 (93.7%)	2317 (91.7%)	2748 (92.0%)
<i>Positive</i>	0	0	0	0	29 (6.3%)	209 (8.3%)	238 (8.0%)
Positive							
<i>Negative</i>	0	0	0	0	110 (94.8%)	4198 (96.2%)	4308 (96.2%)
<i>Positive</i>	0	0	0	0	6 (5.2%)	164 (3.8%)	170 (3.8%)

280

281 **Table 1B** - Distribution of blood culture results collected in March 2020 by SARS-CoV-2 status.

Blood Culture Date	Not tested (N=7838)	Negative (N=2986)	Positive (N=4478)	Total (N=15302)	p value
Mar 1-15, 2020					0.840 ¹
Blood Culture Result					
<i>Negative</i>	5556 (93.5%)	431 (93.7%)	110 (94.8%)	6097 (93.5%)	
<i>Positive</i>	386 (6.5%)	29 (6.3%)	6 (5.2%)	421 (6.5%)	
Mar 16-31, 2020					<0.001 ¹
Blood Culture Result					
<i>Negative</i>	1779 (93.8%)	2317 (91.7%)	4198 (96.2%)	8294 (94.4%)	
<i>Positive</i>	117 (6.2%)	209 (8.3%)	164 (3.8%)	490 (5.6%)	

282 1. Pearson's Chi-squared test

283

284 **Table 2** - Most frequent microorganism groups isolated from blood cultures by SARS-CoV-2
 285 status. Each species was counted once per patient, independently of how often it was isolated
 286 from each patient, then grouped by the conventional categories.

	Not tested (N=3928)	Negative (N=153)	Positive (N=159)	Total (N=4240)	p value
Microorganism					<0.001 ¹
<i>Staphylococcus aureus</i>	344 (8.8%)	15 (9.8%)	8 (5.0%)	367 (8.7%)	
Coagulase-negative <i>Staphylococcus</i>	1169 (29.8%)	49 (32.0%)	95 (59.7%)	1313 (31.0%)	
Other Gram-positive cocci	702 (17.9%)	25 (16.3%)	21 (13.2%)	748 (17.6%)	
Gram-negative rods	1187 (30.2%)	42 (27.5%)	16 (10.1%)	1245 (29.4%)	
Gram-positive rods	236 (6.0%)	5 (3.3%)	15 (9.4%)	256 (6.0%)	
Gram-negative cocci	6 (0.2%)	0 (0.0%)	0 (0.0%)	6 (0.1%)	
Anaerobes	171 (4.4%)	10 (6.5%)	2 (1.3%)	183 (4.3%)	
Yeast	113 (2.9%)	7 (4.6%)	2 (1.3%)	122 (2.9%)	

287 1. Pearson's Chi-squared test

288 **Table 3** - Distribution of blood culture results by date and SARS-CoV-2 Status. Organisms were
 289 labeled as likely contaminants if they were isolated only once per patient and belong to the
 290 groups generally defined as skin contaminants

Blood Culture Date		Not tested (N=80739)	Negative (N=2986)	Positive (N=4478)	Total (N=88203)	p value
Jan-Feb 2019	BC Result					
	Negative	27022 (93.1%)	0	0	27022 (93.1%)	
	Likely Contaminant	636 (2.2%)	0	0	636 (2.2%)	
	Positive	1361 (4.7%)	0	0	1361 (4.7%)	
Mar 1-15, 2019	BC Result					
	Negative	7074 (93.1%)	0	0	7074 (93.1%)	
	Likely Contaminant	154 (2.0%)	0	0	154 (2.0%)	
	Positive	373 (4.9%)	0	0	373 (4.9%)	
Mar 16-31, 2019	BC Result					
	Negative	7065 (91.9%)	0	0	7065 (91.9%)	
	Likely Contaminant	186 (2.4%)	0	0	186 (2.4%)	
	Positive	437 (5.7%)	0	0	437 (5.7%)	
Jan-Feb 2020	BC Result					
	Negative	26520 (92.7%)	0	0	26520 (92.7%)	
	Likely Contaminant	624 (2.2%)	0	0	624 (2.2%)	
	Positive	1449 (5.1%)	0	0	1449 (5.1%)	
Mar 1-15, 2020	BC Result					0.431 ¹
	Negative	5556 (93.5%)	431 (93.7%)	110 (94.8%)	6097 (93.5%)	
	Likely Contaminant	128 (2.2%)	7 (1.5%)	4 (3.4%)	139 (2.1%)	
	Positive	258 (4.3%)	22 (4.8%)	2 (1.7%)	282 (4.3%)	
Mar 16-31, 2020	BC Result					<0.001 ¹
	Negative	1779 (93.8%)	2317 (91.7%)	4198 (96.2%)	8294 (94.4%)	
	Likely Contaminant	31 (1.6%)	59 (2.3%)	96 (2.2%)	186 (2.1%)	
	Positive	86 (4.5%)	150 (5.9%)	68 (1.6%)	304 (3.5%)	

1. Pearson's Chi-squared test

291
292

293 **Figure Legends:**

294 Figure 1: Blood culture ordering volume by day in 2019 and 2020. Total blood cultures are shown in
295 purple and are broken down by SARS-CoV-2 status of “Positive” in blue, “Negative” in red, and “Not
296 tested” in green.

297

298 Figure 2: Rate of blood culture positivity by day in 2019 and 2020. The percentage of positive blood
299 cultures is shown in red and the total number of negative blood cultures is shown in blue.

300

301 Figure 3: Frequency of microorganisms identified from positive blood cultures stratified by SARS-CoV-2
302 status. Each microorganism was counted once per patient and grouped by the categories specified in the
303 figure legends. A. All microorganisms isolated were counted. B. Likely skin contaminant were excluded.
304 *** Pearson’s chi-square p-value < 0.001.

305

306 Figure 4: Time to positivity of positive blood cultures stratified by SARS-CoV-2 status. Time to
307 positivity was calculated from the time of collection to the first positive signal as recorded by the gram
308 stain date/time. The scaled density distribution of the time to positivity is shown as color-filled density
309 plots and the cumulative distribution of positivity over time is represented by solid lines.

310

Figure 1 - Blood Culture Volumes

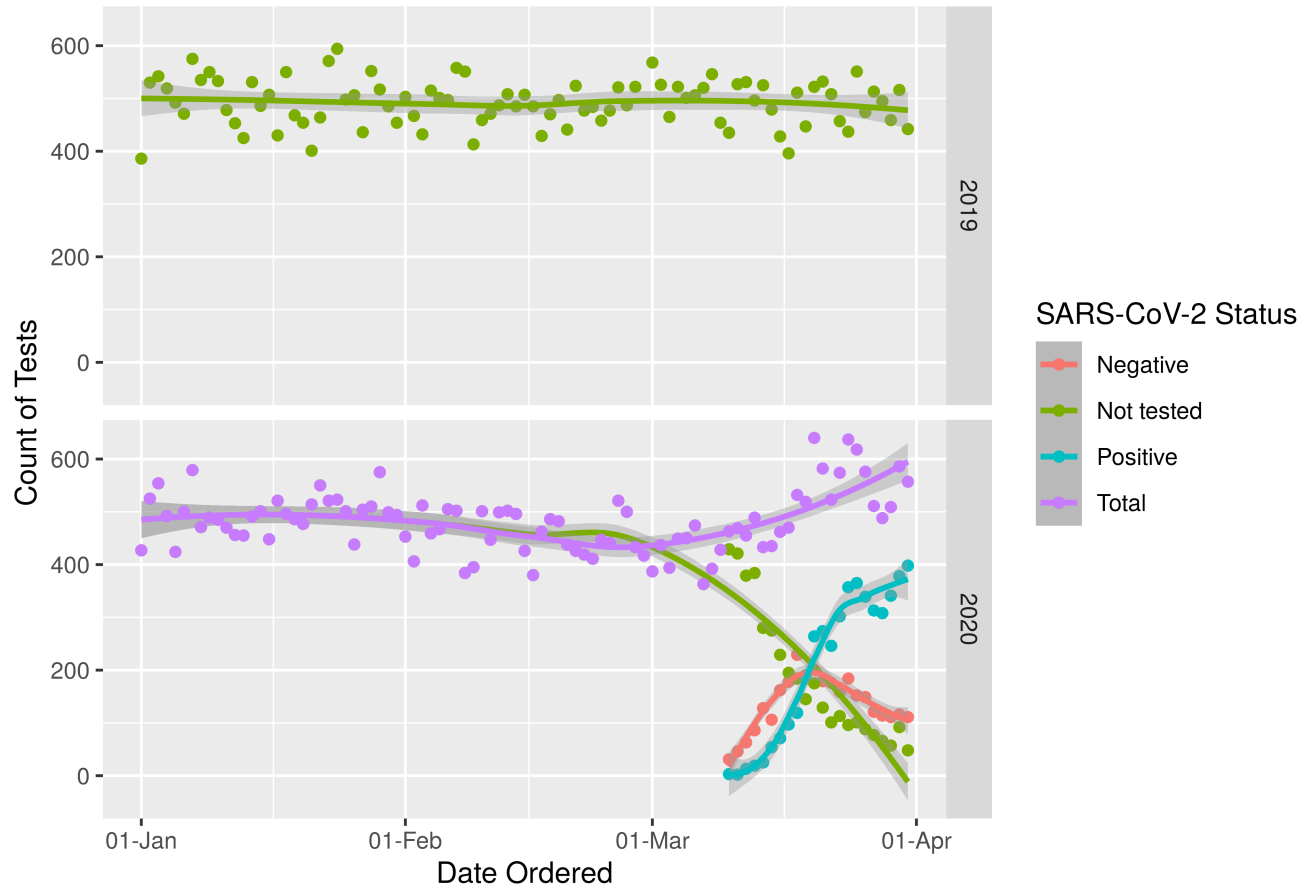


Figure 2 - % Positive Blood Cultures (in red) and Number of Negative Blood Cultures (in blue)

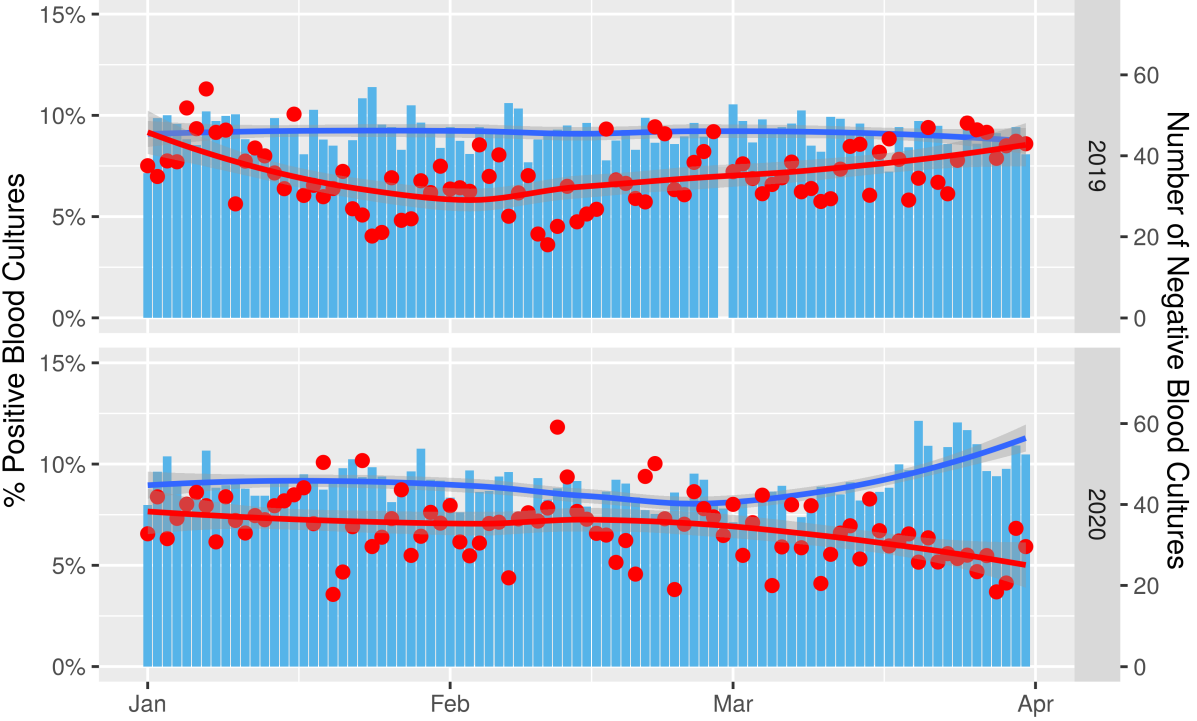


Figure 3-A. All positive cultures per patient

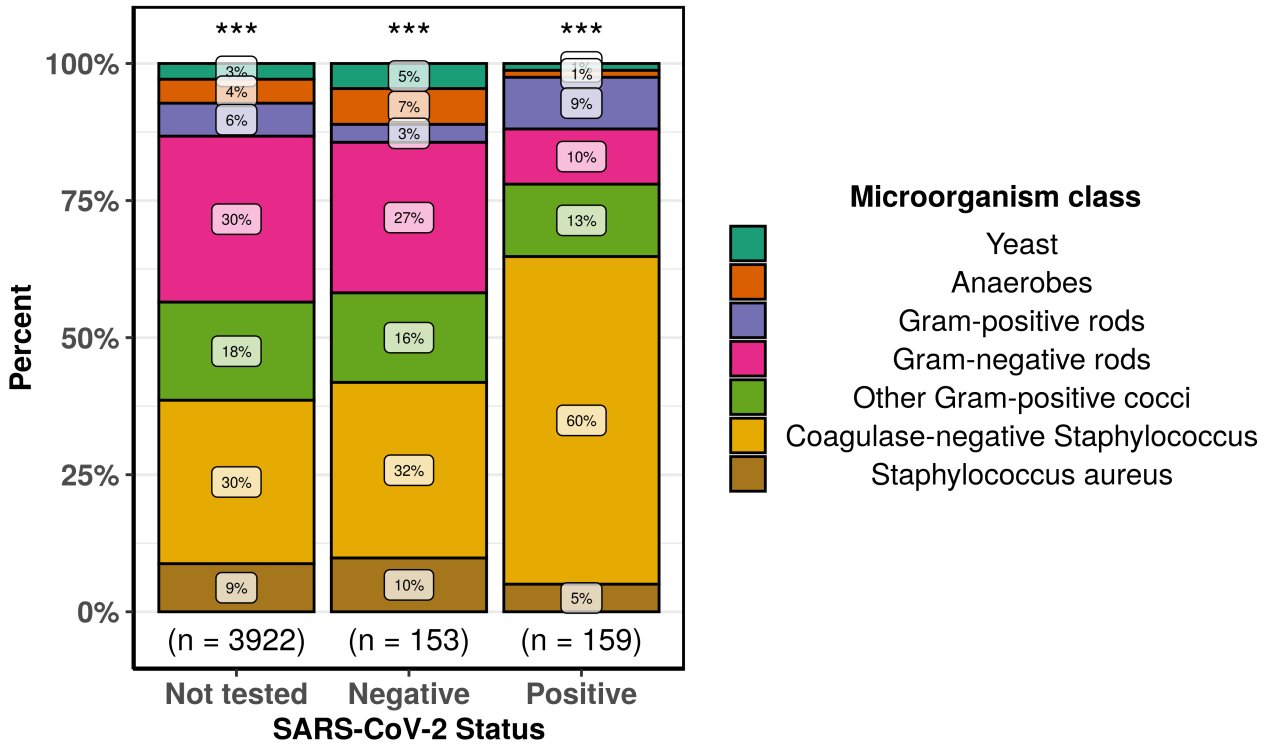


Figure 3-B. Positive cultures per patient after excluding likely contaminants

