

Running title: late immune-related adverse events.

Late immune-related adverse events in long-term responders to PD-1/PD-L1 checkpoint inhibitors: a multicentre study.

Olga Nigro¹, MD, Graziella Pinotti¹, MD, Federica De Galitiis², MD, Francesca Romana Di Pietro^{2,3}, MD, Raffaele Giusti³, MD, Marco Filetti³, MD, Melissa Bersanelli⁴, MD, Alessandro Lazzarin⁴, MD, Paola Bordi⁴, MD, Annamaria Catino⁵, MD, Pamela Pizzutilo⁵, MD, Domenico Galetta⁵, MD, Paolo Marchetti^{2,6}, MD, Andrea Botticelli⁶, MD, PhD, Simone Scagnoli⁶, MD, Marco Russano⁷, MD, Daniele Santini⁷, MD, Mariangela Torniai⁸, MD, Rossana Berardi⁸, MD, Biagio Ricciuti⁹, MD, Andrea De Giglio⁹, MD, Rita Chiari¹⁰, MD, Alessandro Russo¹¹, MD, PhD, Vincenzo Adamo¹¹, MD, Marianna Tudini¹², MD, Rosa Rita Silva¹², MD, Elena Bolzacchini¹³, MD, Monica Giordano¹³, MD, Pietro Di Marino¹⁴, MD, Michele De Tursi¹⁵, MD, Erika Rijavec¹⁶, MD, Michele Ghidini¹⁶, MD, PhD, Ilaria Vallini¹, Luigia Stefania Stucci¹⁷, MD, PhD, Marco Tucci^{17, 25}, MD, PhD, Laura Pala¹⁸, MD, Fabio Conforti¹⁸, MD, Paola Queirolo¹⁸, MD, Enrica Tanda¹⁹, MD, Francesco Spagnolo¹⁹, MD, Federica Cecchi¹⁹, MD, Sergio Bracarda²⁰, MD, Serena Macrini²⁰, MD, Matteo Santoni²¹, MD, Nicola Battelli²¹, MD, Maria Concetta Fagnoli^{22,23}, MD, Giampiero Porzio^{22,24}, MD, Alessandro Tuzi¹, MD, Matteo Basilio Suter¹, MD, Corrado Ficorella^{22,24}, MD, Alessio Cortellini^{22,24}, MD.

1. Medical Oncology, ASST Sette Laghi, Ospedale di Circolo e Fondazione Macchi, Varese, Italy;
2. Oncologia ed Oncologia Dermatologica, IDI-IRCCS, Roma, Italy;
3. Medical Oncology, Azienda Ospedaliero-Universitaria Sant'Andrea, Roma, Italy;
4. Medical Oncology, Azienda Ospedaliero-Universitaria di Parma, Italy;
5. Thoracic Oncology Unit, IRCCS Istituto Tumori "Giovanni Paolo II", Bari, Italy;
6. Dipartimento di Scienze Medico-Chirurgiche e Medicina Traslazionale Università "La Sapienza" Roma;
7. Medical Oncology, Campus Bio-Medico, Roma, Italy;
8. Clinica Oncologica, Università Politecnica delle Marche, Azienda Ospedaliero-Universitaria Ospedali Riuniti Umberto I, GM Lancisi, G Salesi, Ancona, Italy;
9. Department of Surgical and Biomedical Sciences, University of Perugia, Perugia, Italy;
10. Medical Oncology, Ospedali Riuniti Padova Sud "Madre Teresa Di Calcutta", Monselice, Italy;
11. Medical Oncology, A.O. Papardo & Department of Human Pathology, University of Messina, Italy;
12. Medical Oncology, ASUR Marche, Area Vasta 2, Fabriano, Italy;
13. Medical Oncology, ASST Lariana, Ospedale Sant'Anna, Como, Italy;
14. Clinical Oncology Unit, S.S. Annunziata Hospital, Chieti, Italy;
15. Department of Medical, Oral and Biotechnological Sciences, University G. D'Annunzio, Chieti-Pescara, Italy;
16. Medical Oncology Unit, Fondazione IRCCS Ca' Granda Ospedale Maggiore Policlinico, Milan, Italy;
17. Medical Oncology Unit, University of Bari, Department of biomedical sciences and human oncology, Bari, Italy;
18. Division of Medical Oncology for Melanoma, Sarcoma, and Rare Tumors, IEO, European Institute of Oncology IRCCS, Milan, Italy;
19. IRCCS Ospedale Policlinico San Martino, Genova, Italy;
20. Department of Medical Oncology, "Santa Maria" Hospital, Terni, Italy;
21. Department of Oncology, Macerata Hospital, Macerata, Italy;

NOTE: This preprint reports new research that has not been certified by peer review and should not be used to guide clinical practice.

22. Department of Dermatology, St. Salvatore Hospital, L'Aquila, Italy;
23. Department of Biotechnology and Applied Clinical Sciences, University of L'Aquila, L'Aquila, Italy;
24. Medical Oncology, St. Salvatore Hospital, L'Aquila, Italy;
25. National Cancer Research Center, Tumori Institute Giovanni Paolo II, Bari, Italy

Corresponding author

Dr Olga Nigro MD

Department of Medical Oncology, ASST Sette Laghi, Ospedale di Circolo e Fondazione Macchi
Viale Borri 57

Varese, 21100, Italy

P: 0039-0332/393437

Email: nigro.olga3@gmail.com

ORCID 0000-0002-1030-2809

Manuscript word count: 2500

Abstract

Data on spectrum and grade of immune-related adverse events (irAEs) in long-term responders to immune checkpoint inhibitors (ICI) are lacking.

We performed a retrospective multicenter study to characterized irAEs occurring after a 12-months minimum treatment period with PD-(L)1 ICIs in advanced cancer patients. IrAEs were categorized into “early” (≤ 12 months) and “late” (> 12 months).

From September 2013 to October 2019, 436 consecutive patients were evaluated. 223 experienced any grade early-irAEs (51.1%), while 132 experienced any grade late-irAEs (30.3%) ($p < 0.0001$). Among the latter, 29 (22%) experienced a recurrence of an early-irAEs, while 103 (78%) experienced *de novo* late-irAEs involving different system/organ. Among patients with late-irAEs, 21 experienced G3/G4 irAEs (4.8%). Median time to onset of early-irAEs was 3.4 months (95%CI: 2.8-4.2), while the median time to onset of late-irAEs was 16.6 months (95%CI: 15.8-17.6). Cumulative time-adjusted risk of disease progression according to both the early-irAEs (HR = 0.63 [95%CI: 0.30-1.29], $p = 0.204$) and late-irAEs occurrence revealed no statistically significant differences (HR = 0.75 [95%CI: 0.37-1.56], $p = 0.452$). Also the time-adjusted cumulative risk of death according to both early-irAEs (HR = 0.79 [95%CI: 0.34-1.86], $p = 0.598$) and late-irAEs (HR = 0.92 [95%CI: 0.49-1.74], $p = 0.811$) did not show statistically significant differences.

Although less frequent than early-irAEs, late-irAEs are quite common in long responders to PD-(L)1 ICIs, and are different in terms of spectrum and grade. Time-adjusted analysis revealed that the cumulative risk of disease progression and death were not significantly reduced in patients who experienced late-irAEs.

Keywords: immunotherapy; immune checkpoint; nivolumab; pembrolizumab; atezolizumab; immune-related adverse events.

Introduction

Methods of adverse events (AEs) reporting in clinical trials are aimed at quantifying and qualifying development of AEs over time, which have traditionally been reported as cumulative incidence, highlighting the maximum AE grade per patient during the study period [1]. The greatest limitation of these methods is that they do not consider the duration of treatment, as in exposure-adjusted safety analyses [2]. Tables focusing on high-grade AEs do not depict the evolution of toxicity over time [1]. “Timing” is important for oncological therapies with chronic administration [2, 3], as for Immune Checkpoint Inhibitors (ICIs), which can be associated with immune-related adverse events (irAEs). Updates of prospective studies of anti-programmed death-1 (PD-1) agents demonstrated that safety profile of these drugs remains almost unchanged over time [4-6]. Furthermore, guidelines report that irAEs occur quite early, mostly within weeks from immunotherapy start, and only occasionally after the first year of treatment [7, 8]. Interestingly, studies conducted across different tumor types have shown that irAEs are associated with improved clinical outcomes, and their occurrence has increasingly been interpreted as a pharmacodynamic effect of ICIs [9, 10]. These studies showed conflicting results, especially due to lead-in time bias of time-dependent nature of irAEs [11]. Against this background, we conducted a multicentre, retrospective study on a long-term responder advanced cancer patients, and characterized those irAEs occurring after the first year of immunotherapy.

Materials and Methods

This multicenter retrospective observational study evaluated advanced cancer patients consecutively treated with single agent PD-1/PD-L1 (programmed death-ligand 1) checkpoint inhibitors (standard schedules) from September 2013 to October 2019, regardless of treatment line, at 20 Italian institutions (Supplementary file 1). Patients were eligible if they had a minimum treatment duration of 12 months.

Study design

Primary end-point was to describe incidence and characteristics of irAEs occurring after the first 12 months of treatment with PD-1/PD-L1 checkpoint inhibitors (late-irAEs); secondary end-point was to further investigate the relationships between irAEs occurrence, progression free survival (PFS), and overall survival (OS).

IrAEs were categorized into: “early-irAEs” (≤ 12 months of immunotherapy), and “late-irAEs” (> 12 months). IrAEs that started ≤ 12 months, but lasted more than 12 months, were considered early-irAEs. IrAEs were graduated according to the National Cancer Institute Common Toxicity Criteria for Adverse Events (CTCAE; version 4.0). IrAEs were categorized on the basis of the organ/system involved: cutaneous, endocrine (including thyroid disorders), gastrointestinal (GI), pneumological, hepatic, rheumatologic, neurologic, and others irAEs (including hyperpyrexia, pancreatitis and asthenia). IrAEs were defined “single-site” if involving one system/organ; “multiple-site” if involving more than one system/organ. Analyses by categories and number of involved sites were performed only for any grade irAEs and not for G3/G4 irAEs. χ^2 test was used to evaluate the difference between early- and late-irAEs [12]. Clinical management of early- and late-irAEs was categorized as follows: no intervention (supportive treatments), corticosteroids administration without immunotherapy interruption, corticosteroids administration with temporary interruption, and corticosteroids administration with permanent discontinuation. Late-irAEs which represent a recurrence of an early-irAEs was also described and reported as late-irAEs, when spaced by an irAEs free interval. Median time to onset of early- and late-irAEs since treatment start was also reported.

Treatment duration was defined as “time from treatment’s start to permanent discontinuation” for any reason (disease progression, treatment toxicity, patient preference, death). Baseline patients’ features were reported: age (< 70 vs. ≥ 70 years old) [13-16], sex (male vs female), primary tumor (NSCLC, melanoma, renal cell carcinoma and others), Eastern Cooperative Oncology Group Performance Status (ECOG-PS) ($0-1$ vs ≥ 2), number of involved organs including the primitive tumor (≥ 3 vs < 3) and treatment line ($1st$ vs $\geq 2nd$).

Patient characteristics and objective response rate (ORR) were reported with descriptive statistic. Patients were assessed with radiological imaging every 8-12 weeks according to national guidelines required by Agenzia Italiana del Farmaco (AIFA); RECIST (v. 1.1) criteria were used [17], but treatment beyond disease progression was allowed when clinically indicated. ORR was defined as portion of patients experiencing an objective response (complete or partial response) as best response to immunotherapy; PFS as time from treatment’s start to disease progression or death whichever occurred first; OS as time from the beginning of treatment to death.

Median treatment duration, median time to irAEs onset, median PFS and median OS were evaluated using the Kaplan-Meier method [18]. Median period of follow-up was computed according to the reverse Kaplan-Meier method [19]. Cox proportional hazards model was used to evaluate PFS and OS according to early-irAEs occurrence (yes vs no) and late-irAEs

occurrence (yes vs no) and to estimate hazard ratios (HRs) for disease progression and death [20]. Considering the lead-in time bias caused by time-dependent nature of irAEs a further analysis was performed, in order to estimate the risk of disease progression and death over time, according to the early-irAEs and late-irAEs occurrence. A Cox model was therefore fitted by considering irAEs occurrence a time-varying covariate that had a value of 0 before the irAE onset and 1 after irAE onset; cumulative hazard plots was also presented [21]. Data cut-off period was October 2019. Statistical analyses were performed using MedCalc Statistical Software version 18.11.3 (MedCalc Software bvba, Ostend, Belgium; <https://www.medcalc.org>; 2019). Time-adjusted Cox regression was performed using the R package rpart (R version 3.6.2).

Results

Patient characteristics

436 consecutive patients were evaluated; median age was 68 years (range: 32-92). 291 (66.7%) were male, while 145 (33.3%) were female. Primary tumors were: NSCLC (49.1%), melanoma (39.0%), kidney (9.4%), and others (2.5%). Clinico-pathologic characteristics of the entire cohort of patients are summarized in Table 1.

Immune-related adverse events analysis

223 patients experienced any grade early-irAEs (51.1%), while 132 experienced any grade late-irAEs (30.3%), with a statistically significant difference ($p < 0.0001$). Among the latter, 29 (22%) experienced a recurrence of an early-irAEs, while 103 (78%) experienced late-irAEs involving different system/organ not previously involved. 21 patients experienced G3 early-irAEs (4.8%), as well as G3 late-irAEs (21 patients, 4.8%). No G4 early-irAEs, nor G4 late-irAEs were reported. Median time to onset of early-irAEs was 3.4 months (95%CI: 2.8-4.2), while median time to onset of late-irAEs was 16.6 months (95%CI: 15.8-17.6).

Table 2A summarizes early- and late-irAEs according to system/organ involved. Incidence of late cutaneous, endocrine, GI, and other irAEs, was significantly lower compared to incidence of the respective early-irAEs category.

149 patients in early-irAEs group (34.2%) experienced single-site irAEs, compared to 114 patients (26.1%) in late-irAEs group, ($p = 0.0585$). Similarly, 74 patients in early-irAEs group experienced multiple-site irAEs (17%), compared 18 patients (4.1%) in late-irAEs group, ($p < 0.0001$). Table 2B reports the clinical management of early- and late-irAEs. Early irAEs were managed with supportive interventions only (49.3%), and to a lesser extent with corticosteroids administration with (15.2%) or without (35.4%) temporary immunotherapy

discontinuation. Late-irAEs were also managed with supportive interventions only (44.7%) or with corticosteroids administration without immunotherapy discontinuation (32.5%); 11.4% of late-irAEs were managed with corticosteroids administration and temporary discontinuation, as well as corticosteroids administration with permanent discontinuation.

Clinical outcomes analysis

ORR to immunotherapy in the entire cohort of patients was 71.3% (95%CI: 63.6–79.7): 119 stable disease (27.3%), 250 partial responses (57.3%), 61 complete responses (14.0%), and 6 (1.4%) progressive disease were reported. At a median follow-up of 23.3 months (95%CI: 21.8-25.2), median treatment duration was 30.8 months (95%CI: 27.8-33.6) and 273 patients were still receiving immunotherapy at the data cut-off.

In the overall population, median PFS was 43.1 months (95%CI: 36.6-53.5; 124 events), while median OS was not reached (373 censored). Table 3 summarized conventional Cox proportional hazard estimation for PFS and OS, and time-adjusted cumulative hazard estimation of disease progression and death were presented according to early- and late-irAEs occurrence. Among patients who experienced and who did not experience any grade early-irAEs median PFS was 53.5 months (95%CI: 41.1-53.5; 61 events) and 42.7 months (95%CI: 31.1-42.7; 63 events), respectively, with no statistically significant difference (HR=0.43 [95%CI: 0.61-1.23], $p=0.8702$) (Figure 1A). Median PFS among patients who experienced and who did not experience any grade late-irAEs was not reached (27 events) and 41.1 months (95%CI: 30.2-53.5; 97 events), respectively, with a statistically significant difference (HR=0.46 [95%CI: 0.30-0.72], $p=0.0005$) (Figure 1B). In both the cohorts of patients who experienced (190 censored) and who did not experience any grade early-irAEs (183 censored), median OS was not reached, without statistically significant difference (HR=0.96 [95%CI: 0.58-1.57], $p=0.8750$) (Figure 1C). Similarly, in both the cohorts of patients who experienced (120 censored) and who did not experience any grade early-irAEs (253 censored), median OS was not reached, but with a statistically significant difference (HR=0.41 [95%CI: 0.22-0.77], $p=0.0053$) (Figure 1D).

Cumulative time-adjusted risk of disease progression according to both early- (HR=0.63 [95%CI: 0.30-1.29], $p=0.204$) and late-irAEs occurrence revealed no statistically significant differences (HR=0.75 [95%CI: 0.37-1.56], $p=0.452$) (Figure 2A-2C). Analogously, also time-adjusted cumulative risk of death according to both early-irAEs (HR=0.79 [95%CI: 0.34-1.86], $p=0.598$) and late-irAEs (HR=0.92 [95%CI: 0.49-1.74], $p=0.811$) did not show statistically significant differences (Figure 2B and 2D).

Discussion

By definition, long-responders are positively selected patients; being able to be treated for a long time, with typically a lower tumor burden and fit to receive ICIs. In our study population, only 5.3% of patients had an ECOG-PS ≥ 2 , while 34.4% had ≥ 3 involved organs. Positive selection might also have affected irAEs, both in terms of spectrum and grade. Considering any grade early-irAEs (51.1%) and G3 early-irAEs (4.8%), incidence was lower, compared to global incidence recently reported in clinical trials (any grade irAEs: 51.1%, G3/G4 irAEs: 4.8%) [22]. Moreover, no G4 irAEs were reported in the entire study population. Positive selection also explains the clinical management, with a relatively low need of systemic steroids administration (35.4%), and treatment interruption (15.2%), due to early-irAEs.

Globally, our study confirms the spectrum of all-grade irAEs described in both clinical trials and real-life studies with PD-1/PD-L1 inhibitors [22-24]; cutaneous (19.3%), endocrine (13.9%), and GI (10.8%) irAEs were the most commonly reported. Although they were not among the most frequent, rheumatologic irAEs had an incidence of 9.9%, higher than previously described in literature (0.7-5.1%) [24-25].

As irAEs could be considered a surrogate of effectiveness of ICIs [9, 10], positive selection might have also affected type and grade of irAEs, which not necessarily mirrors the spectrum of irAEs observed in general population of patients treated with ICIs. It has recently been reported that rheumatologic irAEs are more tissue-specific compared to non-rheumatologic, which might contribute to explain the higher incidence observed in our study [25]. A growing body of evidence suggests that checkpoint dysfunctions might directly contribute to autoimmune diseases pathogenesis and their clinical evolution, providing some insights regarding the underlying mechanisms of irAEs. A defective PD-1 inhibitory signalling might contribute to pathogenesis of rheumatoid arthritis [26] and giant cell arteritis [27]. Moreover, T-cell exhaustion can be related with a low severity of several autoimmune diseases [28]. ICIs treatment is associated to a shift from an exhausted T-cell phenotype to an active T-cell effector phenotype, and that might contribute to the pathogenesis of both rheumatic and non-rheumatic irAEs [25, 29-31].

Toxicity profile of cancer treatments could dramatically vary over time, leading to significant changes of risk/benefit ratio with exposure-adjusted safety analyses [32]. Our primary finding of a significantly lower incidence of late-irAEs compared to early-irAEs (30.3% vs 51.1%, $p < 0.0001$), partially collide with that. Beyond positive selection, a little percentage of patients was still at risk of developing late-irAEs after the first 12 months of immunotherapy. This may

partially explain how the cumulative incidence does not dramatically increase over time in clinical trials with PD-1/PD-L1 inhibitors [4-6]. Although it has been reported that irAEs have a certain tendency of recurrence after their resolution [33], in our study population only 22% of patients experienced a late recurrence of an early-irAEs. Even then, our results could be partly explained by positive selection, which probably excluded patients who experienced severe early-irAEs (which could have required permanent discontinuation ≤ 12 months, even after an attempt to rechallenge). Also, late-irAEs were easy to manage, requiring steroids administration (32.5%), temporary interruption (11.4%), or permanent immunotherapy discontinuation (11.4%) only in a minority of cases.

As for early-irAEs, cutaneous (11.5%), endocrine (4.6%) and GI (4.1%) were the most common irAEs, but significantly less frequent when compared to respective organ/system category early-irAEs ($p=0.0062$, $p<0.0001$, and $p=0.0005$, respectively). As for early-irAEs, also among late-irAEs, rheumatologic adverse events had a high crude incidence (6.7%). It has been reported that two markers of neutrophil activation, CD177 and CEACAM1, might be considered biomarkers for irAEs occurrence, particularly for GI toxicity [34]. Moreover, a recent study confirmed the possible role in irAEs pathogenesis, of overlapping antigens in tumor and healthy body sites [35]. These evidences suggest that irAEs are tissue-specific and tend to involve a specific system/organ. In accordance with that, it is already been reported that single-site are more frequent than multiple-site irAEs [36]. Interestingly, multiple-site late-irAEs (4.1%) were significantly less frequent compared to multiple-site early-irAEs (17%). These results allow us to speculate about the "tissue-specificity" of irAEs, which seems to be incremental, according to positive patient selection.

Several reports demonstrated a significant correlation between irAEs occurrence and ICIs effectiveness, even with land-mark analyses adjusted for exposure time [9, 10, 36, 37]. To date, the greatest criticism of this phenomenology has always been the immortal time bias, which implies that longer is the exposure time, the greater the risk of experience irAEs [11]. As a result, long responders would have a greater risk of developing irAEs overall. Recently, Eggermont et al. confirmed a strong association between irAEs and relapse free survival in patients with high-risk stage III melanoma, who were treated with 12-months adjuvant pembrolizumab, dealing with the time bias by using a time-dependent Cox model [21].

Clinical outcomes analysis according to the conventional Cox regression revealed that early-irAEs were not related with PFS and OS, while late-irAEs were significantly associated with improved PFS and OS. While positive selection of study population could surely explain that early-irAEs did not positively select patients for PFS and OS, the fact that all the patients

(despite late-irAEs occurrence) have been treated for at least 12 months, might allows us to speculate that we overcame, at least partially, the lead-time bias. However, we must not fail in taking into account results according to the cumulative hazard estimation over time, which mitigate meaningfully the results. Cumulative time-adjusted risk of progression and death was not significantly reduced according to early- and late-irAEs occurrence indeed, despite the trends which were in accordance with the previous findings. Surely the immature survival data, with only 124 progressed patients (28.5%) and 63 deaths (14.5%) out of 436 patients, affected these results. Among study limitations we have to include also the retrospective design, which expose to selection biases, and the lack of centralized data review (imaging and toxicities).

Conclusions

Although less frequent than early-irAEs, late-irAEs are quite common in long responders to PD-1/PD-L1 checkpoint inhibitors, and are different in terms of spectrum and grade. Despite late-irAEs occurrence seems to be related with improved PFS and OS. Time-adjusted analysis revealed that, in such a high selected population, cumulative risk of disease progression and death were not significantly reduced in patients who experienced late-irAEs. Prospective studies and a longer follow-up are warranted to confirm our results.

Ethics approval and consent to participate

All patients provided written, informed consent to treatment with immunotherapy. All patients alive at the time of data collection provided an informed consent for the present retrospective analysis. The procedures followed were in accordance with the precepts of Good Clinical Practice and the declaration of Helsinki. The study was approved by the respective local ethical committees on human experimentation of each institution, after previous approval by the coordinating center (Comitato Etico dell'Insubria, 126/2019).

Authors' contributions

All authors contributed to the publication according to the ICMJE guidelines for the authorship. All authors read and approved the submitted version of the manuscript (and any substantially modified version that involves the author's contribution to the study). Each author have agreed both to be personally accountable for the author's own contributions and to ensure that questions related to the accuracy or integrity of any part of the work, even ones in which the author was

not personally involved, are appropriately investigated, resolved, and the resolution documented in the literature.

Acknowledgements: This work was supported by the Consorzio Interuniversitario Nazionale per la Bio-Oncologia (CINBO).

Funding: no funding was received.

Availability of data and materials: the datasets used during the present study are available from the corresponding author upon reasonable request.

Consent for publication

Not applicable.

Conflicts of Interest: Dr. Alessio Cortellini received grants as speaker by MSD and Astra-Zeneca; grant consultancies by BMS, Roche, Novartis, Istituto Gentili and Ipsen. Dr. Melissa Bersanelli received research funding by Roche, Pfizer, Seqirus, AstraZeneca, Bristol-Myers Squibb, Novartis and Sanofi; she also received honoraria for advisory role and as speaker at scientific events by Bristol-Myers Squibb, Novartis and Pfizer. Dr. Marco Russano received honoraria for scientific events by Roche, Astrazeneca, Bristol-Myers Squibb, Merck Sharp & Dohme and Boehringer Ingelheim. Dr. Raffaele Giusti Advisory Boards/ Honoraria/ Speakers' fee/ Consultant for: Astra Zeneca, Roche.

References.

1. Thanarajasingam G, Hubbard JM, Sloan JA, et al. The Imperative for a New Approach to Toxicity Analysis in Oncology Clinical Trials. *J Natl Cancer Inst.* 2015 Aug 1;107(10). pii: djv216. doi: 10.1093/jnci/djv216. Print 2015 Oct.
2. Thanarajasingam G, Atherton PJ, Novotny PJ, et al. Longitudinal adverse event assessment in oncology clinical trials: the Toxicity over Time (ToxT) analysis of Alliance trials NCCTG N9741 and 979254. *Lancet Oncol.* 2016 May;17(5):663-70. doi: 10.1016/S1470-2045(16)00038-3. Epub 2016 Apr 12.
3. Walraven I, Aaronson N, Sonke JJ, et al. Adverse event development in clinical oncology trials. *Lancet Oncol.* 2016 Jul;17(7):e263. doi: 10.1016/S1470-2045(16)30197-8.
4. Robert C, Ribas A, Schachter J, et al. Pembrolizumab versus ipilimumab in advanced melanoma (KEYNOTE-006): post-hoc 5-year results from an open-label, multicentre, randomised, controlled, phase 3 study. *Lancet Oncol.* 2019 Sep;20(9):1239-1251. doi: 10.1016/S1470-2045(19)30388-2. Epub 2019 Jul 22.

5. Garon EB, Hellmann MD, Rizvi NA, et al. Five-Year Overall Survival for Patients With Advanced Non–Small-Cell Lung Cancer Treated With Pembrolizumab: Results From the Phase I KEYNOTE-001 Study. *J Clin Oncol*. 2019 Oct 1;37(28):2518-2527. doi: 10.1200/JCO.19.00934. Epub 2019 Jun 2.
6. Antonia SJ, Borghaei H, Ramalingam SS, et al. Four-year survival with nivolumab in patients with previously treated advanced non-small-cell lung cancer: a pooled analysis. *Lancet Oncol*. 2019 Oct;20(10):1395-1408. doi: 10.1016/S1470-2045(19)30407-3. Epub 2019 Aug 14.
7. Haanen JBAG, Carbone F, Robert C, et al. Management of toxicities from immunotherapy: ESMO Clinical Practice Guidelines for diagnosis, treatment and follow-up. *Ann Oncol*. 2017 Jul 1;28(suppl_4):iv119-iv142. doi: 10.1093/annonc/mdx225.
8. Brahmer JR, Lacchetti C, Schneider BJ, et al. Management of Immune-Related Adverse Events in Patients Treated With Immune Checkpoint Inhibitor Therapy: American Society of Clinical Oncology Clinical Practice Guideline. *J Clin Oncol*. 2018 Jun 10;36(17):1714-1768. doi: 10.1200/JCO.2017.77.6385. Epub 2018 Feb 14.
9. Petrelli F, Grizzi G, Ghidini M, et al. Immune-related Adverse Events and Survival in Solid Tumors Treated With Immune Checkpoint Inhibitors: A Systematic Review and Meta-Analysis. *J Immunother*. 2020 Jan;43(1):1-7. doi: 10.1097/CJI.0000000000000300.
10. Cortellini A, Buti S, Agostinelli V, Bersanelli M. A systematic review on the emerging association between the occurrence of immune-related adverse events and clinical outcomes with checkpoint inhibitors in advanced cancer patients. *Semin Oncol*. 2019 Nov 7. pii: S0093-7754(19)30128-9. doi: 10.1053/j.seminoncol.2019.10.003.
11. Dall'Olio FG, Di Nunno V, Massari F. Immortal Time Bias Question in the Association Between Toxicity and Outcome of Immune Checkpoint Inhibitors. *J Clin Oncol*. 2019 Nov 1;JCO1901728. doi: 10.1200/JCO.19.01728.
12. Mantel N. Chi-square tests with one degree of freedom: extensions of the Mendel-Haenszel procedure. *J. Am. Stat. Assoc*. 1963. 58:690-700.
13. Minana B, Cozar JM, Palou J, et al. Bladder cancer in Spain 2011: population-based study. *J Urol* 2014 Feb;191(2):323-8.
14. Ciocan D, Barbe C, Aubin F, et al. Distinctive features of melanoma and its management in elderly patients: a population-based study in France. *JAMA Dermatol* 2013 Oct;149(10):1150-7.
15. Gridelli C, Balducci L, Ciardiello F, et al. Treatment of Elderly Patients With Non-Small-Cell Lung Cancer: Results of an International Expert Panel Meeting of the Italian Association of Thoracic Oncology. *Clin Lung Cancer*. 2015 Sep;16(5):325-33.

16. Azawi NH, Joergensen SM, Jensen NV, et al. Trends in Kidney cancer among the elderly in Denmark, 1980-2012. *Acta Oncol.* 2016;55 Suppl 1:79-84.
17. Eisenhauer EA, Therasse P, Bogaerts J et al. New response evaluation criteria in solid tumours: revised RECIST guideline (version 1.1). *Eur J Cancer* 2009; 45: 228–247.
18. Kaplan EL, Meier P. Nonparametric estimation of incomplete observations. *J. Am. Stat. Assoc.* 1958. 53:457-481.
19. Schemper M, Smith TL. A note on quantifying follow-up in studies of failure time. *Controlled Clinical Trials* 1997. 17:343-346.
20. Cox DR. Regression models and life tables (with discussion). *Journal of the Royal Statistical Society (Series B)* 1972. 74: 187-200.
21. Eggermont AMM, Kicinski M, Blank CU, et al. Association Between Immune-Related Adverse Events and Recurrence-Free Survival Among Patients With Stage III Melanoma Randomized to Receive Pembrolizumab or Placebo: A Secondary Analysis of a Randomized Clinical Trial. *JAMA Oncol.* 2020 Jan 2. doi: 10.1001/jamaoncol.2019.5570.
22. Wang Y, Zhou S, Yang F, et al. Treatment-Related Adverse Events of PD-1 and PD-L1 Inhibitors in Clinical Trials: A Systematic Review and Meta-analysis. *JAMA Oncol.* 2019 Jul 1;5(7):1008-1019. doi: 10.1001/jamaoncol.2019.0393.
23. Cortellini A Buti S, Santini D, et al. Clinical Outcomes of Patients with Advanced Cancer and Pre-Existing Autoimmune Diseases Treated with Anti-Programmed Death-1 Immunotherapy: A Real-World Transverse Study. *Oncologist.* 2019 Jun;24(6):e327-e337. doi: 10.1634/theoncologist.2018-0618. Epub 2019 Feb 22.
24. El Osta B, Hu F, Sadek R, et al. Not all immune-checkpoint inhibitors are created equal: Meta-analysis and systematic review of immune-related adverse events in cancer trials. *Crit Rev Oncol Hematol.* 2017 Nov;119:1-12. doi: 10.1016/j.critrevonc.2017.09.002. Epub 2017 Sep 8.
25. Calabrese LH, Calabrese C, Cappelli LC. Rheumatic immune-related adverse events from cancer immunotherapy. *Nat Rev Rheumatol.* 2018 Oct;14(10):569-579. doi: 10.1038/s41584-018-0074-9.
26. Guo Y, Walsh AM, Canavan M, et al. Immune checkpoint inhibitor PD-1 pathway is down-regulated in synovium at various stages of rheumatoid arthritis disease progression. *PLoS One.* 2018 Feb 28;13(2):e0192704. doi: 10.1371/journal.pone.0192704. eCollection 2018.
27. Zhang H, Watanabe R, Berry GJ, et al. Immunoinhibitory checkpoint deficiency in medium and large vessel vasculitis. *Proc Natl Acad Sci U S A.* 2017 Feb 7;114(6):E970-E979. doi: 10.1073/pnas.1616848114.

28. McKinney EF, Lee JC, Jayne DR, et al. T-cell exhaustion, co-stimulation and clinical outcome in autoimmunity and infection. *Nature*. 2015 Jul 30;523(7562):612-6. doi: 10.1038/nature14468.
29. Huang AC, Postow MA, Orlowski RJ, et al. T-cell invigoration to tumour burden ratio associated with anti-PD-1 response. *Nature*. 2017 May 4;545(7652):60-65. doi: 10.1038/nature22079.
30. Lee J, Ahn E, Kissick HT, et al. Reinvigorating Exhausted T Cells by Blockade of the PD-1 Pathway. *For Immunopathol Dis Therap*. 2015;6(1-2):7-17. doi: 10.1615/ForumImmunDisTher.2015014188.
31. Im SJ, Hashimoto M, Gerner MY, et al. Defining CD8+ T cells that provide the proliferative burst after PD-1 therapy. *Nature*. 2016 Sep 15;537(7620):417-421. doi: 10.1038/nature19330.
32. Stein AS, Larson RA, Schuh AC, et al. Exposure-adjusted adverse events comparing blinatumomab with chemotherapy in advanced acute lymphoblastic leukemia. *Blood Adv*. 2018 Jul 10;2(13):1522-1531. doi: 10.1182/bloodadvances.2018019034.
33. Simonaggio A, Michot JM, Voisin AL, et al. Evaluation of Readministration of Immune Checkpoint Inhibitors After Immune-Related Adverse Events in Patients With Cancer. *JAMA Oncol*. 2019 Jun 6. doi: 10.1001/jamaoncol.2019.1022.
34. Shahabi V, Berman D, Chasalow SD, et al. Gene expression profiling of whole blood in ipilimumab-treated patients for identification of potential biomarkers of immune-related gastrointestinal adverse events. *J Transl Med*. 2013 Mar 22;11:75. doi: 10.1186/1479-5876-11-75.
35. Berner F, Bromze D, Diem S, et al. Association of checkpoint inhibitor-induced toxic effects with shared cancer and tissue antigens in non-small cell lung cancer. *JAMA Oncol*. 2019 Jul 1;5(7):1043-1047. doi: 10.1001/jamaoncol.2019.0402.
36. Cortellini A, Chiari R, Ricciuti B, et al. Correlations Between the Immune-related Adverse Events Spectrum and Efficacy of Anti-PD1 Immunotherapy in NSCLC Patients. *Clin Lung Cancer*. 2019 Jul;20(4):237-247.e1. doi: 10.1016/j.clcc.2019.02.006.
37. Ricciuti B, Genova C, De Giglio A, et al. Impact of immune-related adverse events on survival in patients with advanced non-small cell lung cancer treated with nivolumab: long-term outcomes from a multi-institutional analysis. *J Cancer Res Clin Oncol*. 2019 Feb;145(2):479-485. doi: 10.1007/s00432-018-2805-3.

Legend

Figure 1: Kaplan-Meier survival curves. (A) Progression Free Survival according to the early-irAEs occurrence. (B) Progression Free Survival according to the late-irAEs occurrence. (C) Overall Survival according to the early-irAEs occurrence. (D) Overall Survival according to the late-irAEs occurrence.

Figure 2: Cumulative hazard plots over time. (A) Disease progression according to the early-irAEs occurrence. (B) Death according to the early-irAEs occurrence. (C) Disease progression according to the late-irAEs occurrence. (D) Death according to the late-irAEs occurrence.

Table 1: Patients features.

Table 2: (A) Any grade early-irAEs and late-irAEs. (B) Clinical management of early-irAEs and late-irAEs. (C) Any grade early-irAEs and late-irAEs in NSCLC and melanoma patients.

Table 3: Subgroup analysis of PFS and OS according to the early-irAEs and late-irAEs occurrence. Conventional Cox proportional hazard estimation and time-adjusted cumulative hazard of disease progression and death were presented.

Supplementary file 1: list of the oncological institutions of the study

Table 1: Patients features.

Patients	436 - N (%)
Age (years)	
Median (range)	68 (32-92)
Non-elderly	243 (55.7)
Elderly (≥ 70 y.o.)	193 (44.3)
Gender	
Male	291 (66.7)
Female	145(33.3)
Primary Tumor	
NSCLC	214 (49.1)
Melanoma	170 (39.0)
Kidney	41 (9.4)
Others	11 (2.5)
ECOG PS	
0/1	413 (94.7)
≥ 2	23 (5.3)
Number of involved organs	
< 3	286 (65.6)
≥ 3	150 (34.4)
Treatment line	
First	192 (44.1)
Non-first	244 (55.9)
Immunotherapeutic agents	
Pembrolizumab	174 (39.9)
Nivolumab	252 (57.8)
Atezolizumab	10 (2.3)

Table 2: (A) Any grade early-irAEs and late-irAEs. (B) Clinical management of early-irAEs and late-irAEs. (C) Any grade early-irAEs and late-irAEs in NSCLC and melanoma patients.

A

Any grade irAEs	Early-irAEs (patients-%)	Late-irAEs (patients-%)	P value
Overall population	223 (51.1)	132 (30.3)	< 0.0001
Cutaneous	84 (19.3)	50 (11.5)	0.0062
Endocrine	61 (13.9)	20 (4.6)	< 0.0001
Gastro-intestinal	47 (10.8)	18 (4.1)	0.0005
Pneumological	15 (3.4)	10 (2.3)	0.3244
Haepatic	9 (2.1)	5 (1.1)	0.2892
Rheumatologic	43 (9.9)	29 (6.7)	0.1129
Neurologic	1 (0.2)	4 (0.9)	0.3735
Others	52 (11.9)	13 (2.9)	< 0.0001
Single-site irAEs	149 (34.2)	114 (26.1)	0.0585
Multiple-site irAEs	74 (17)	18 (4.1)	< 0.0001

B

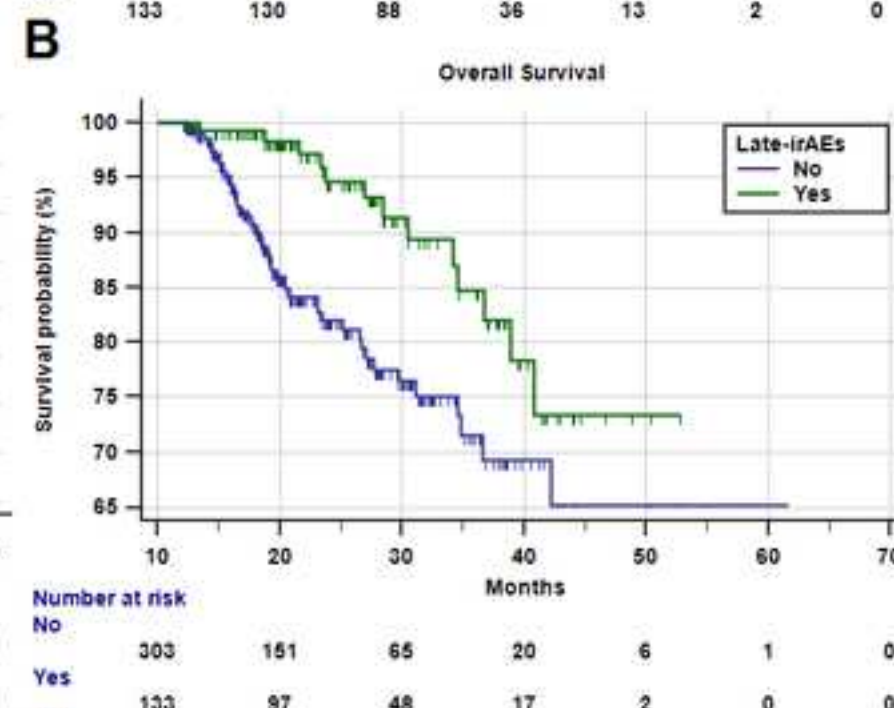
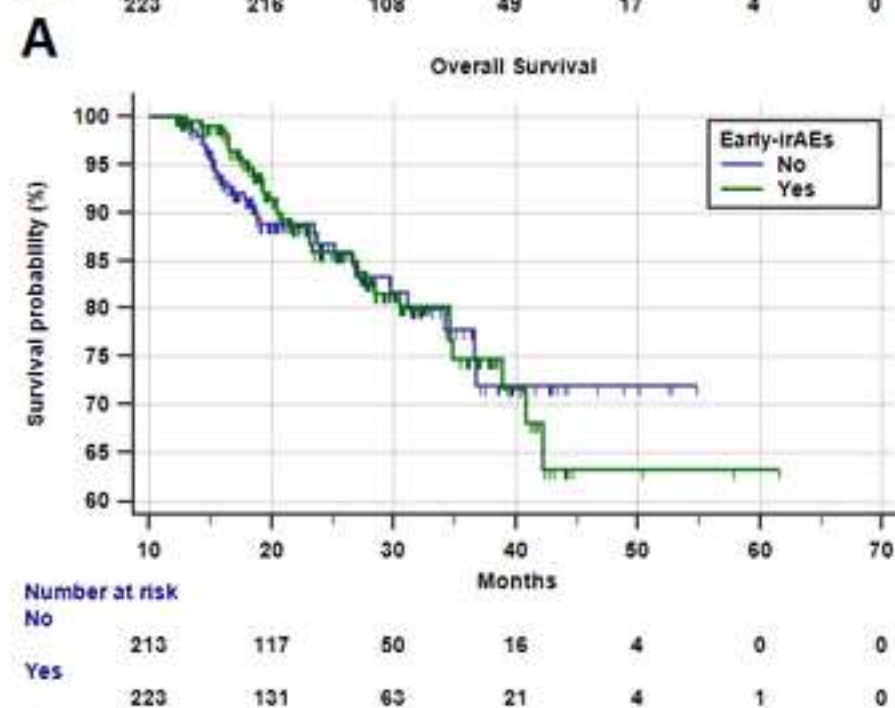
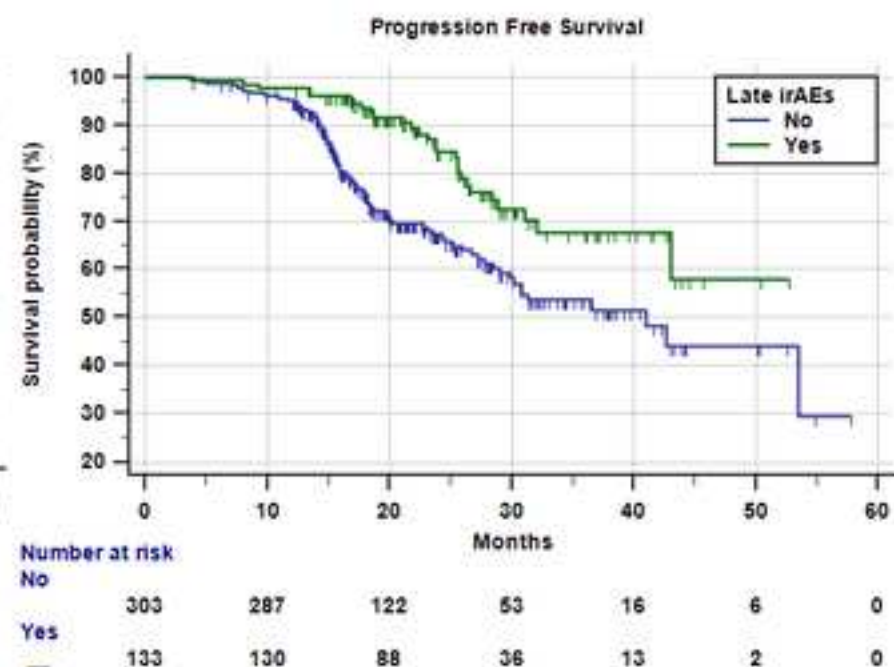
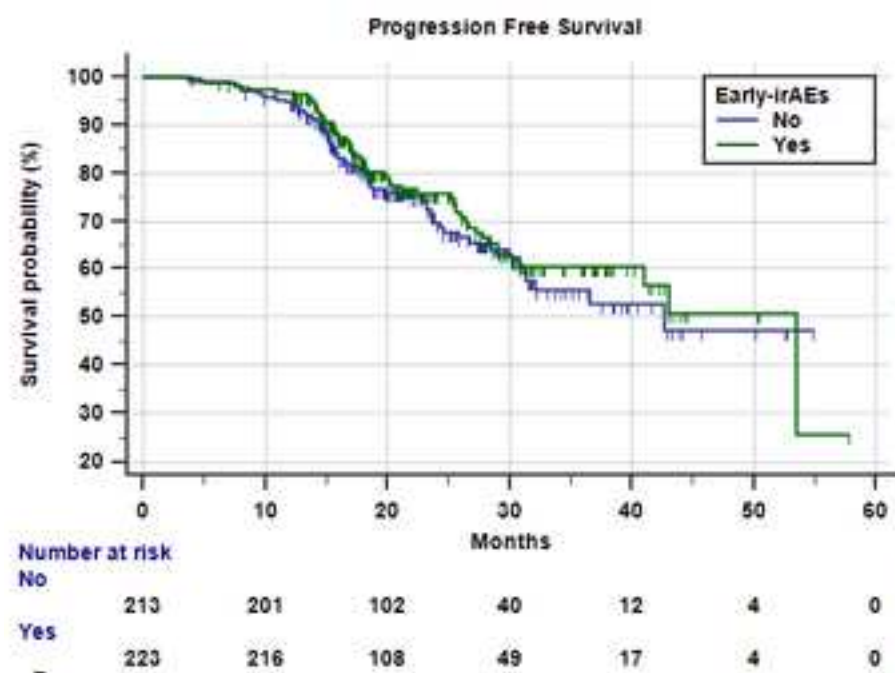
irAEs Management	Early-irAEs	Late-irAEs	P value
No intervention (only supportive)	110 (49.3)	59 (44.7)	0.7789
Corticosteroids without discontinuation	79 (35.4)	43 (32.5)	0.8549
Corticosteroids with temporary interruption	34 (15.2)	15 (11.4)	0.4463
Corticosteroids with permanent discontinuation	-	15 (11.4)	0.0001

C

Any grade late-irAEs	Melanoma (%)	NSCLC (%)
Overall population	49 (28.8)	77 (35.9)
Cutaneous	17 (10)	31 (14.5)
Endocrine	7 (4.1)	13 (6.1)
Gastro-intestinal	6 (3.5)	12 (5.6)
Pneumological	3 (1.8)	5 (2.3)
Haepatic	2 (1.2)	3 (1.4)
Rheumatologic	7 (4.1)	20 (9.3)
Neurologic	4 (2.4)	-
Others	10 (5.9)	2 (0.9)
Single-site irAEs	42 (24.7)	67 (31.3)
Multiple-site irAEs	7 (4.1)	10 (4.7)

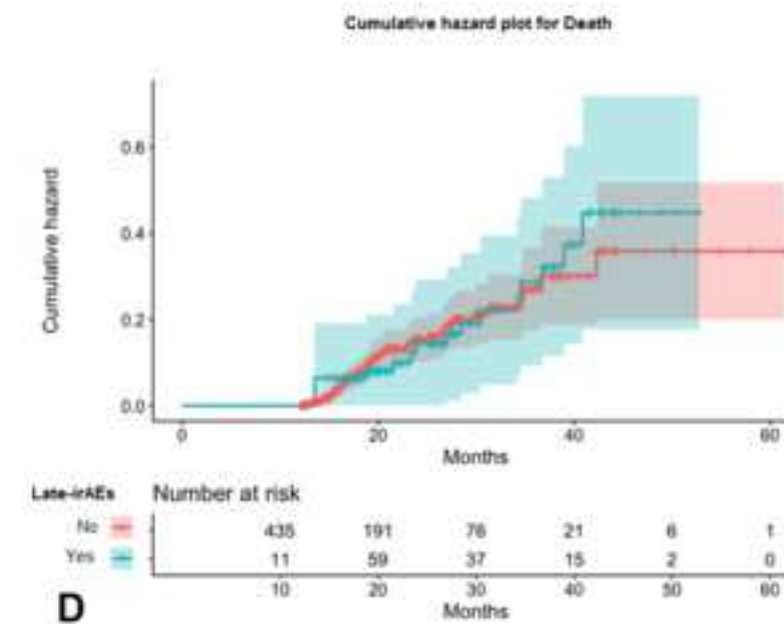
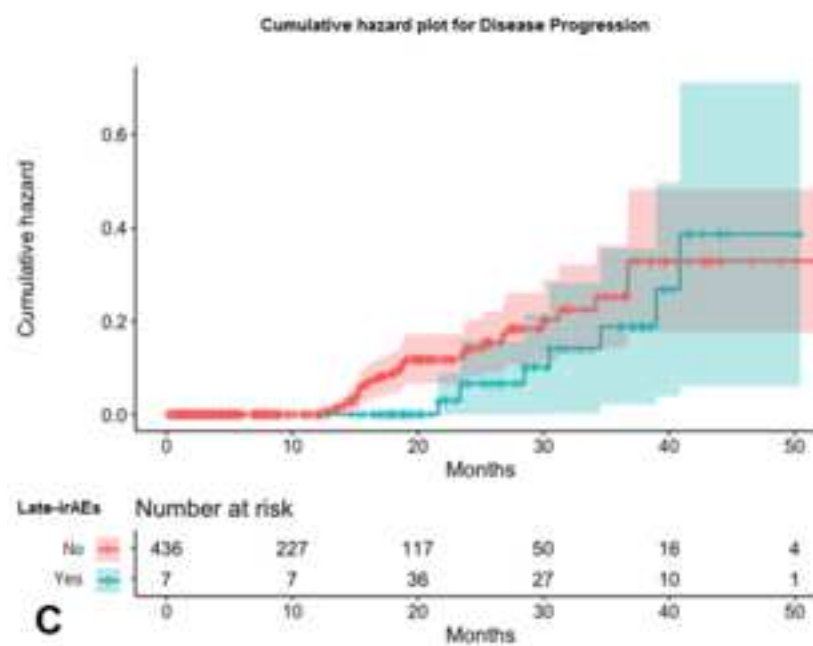
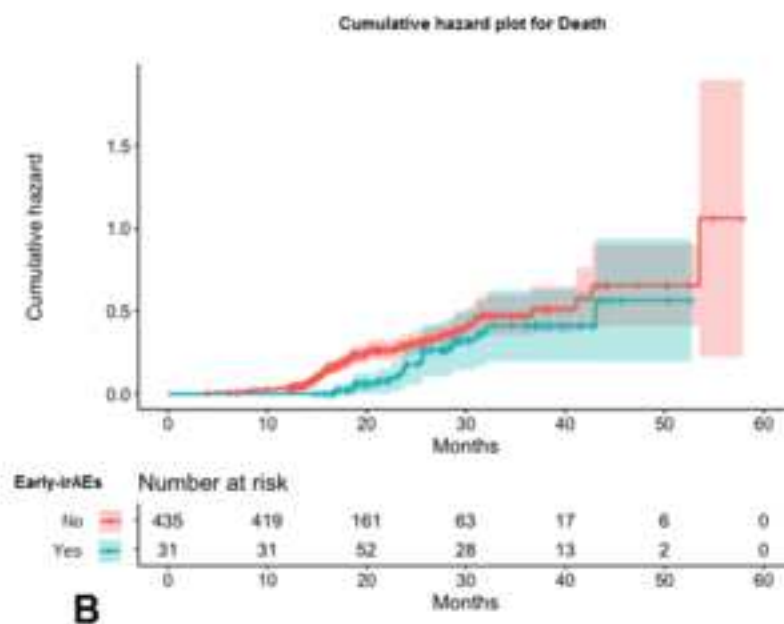
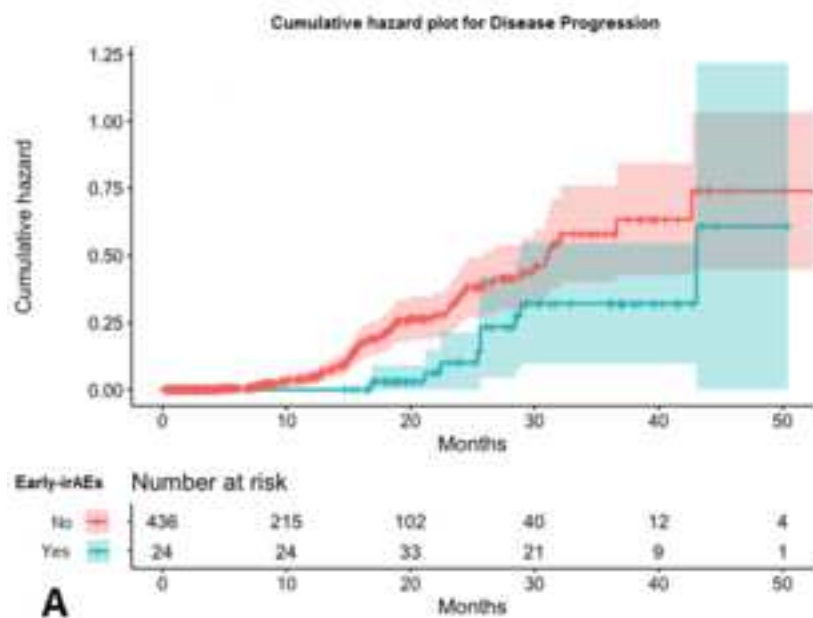
Table 3: Subgroup analysis of PFS and OS according to the early-irAEs and late-irAEs occurrence. Conventional Cox proportional hazard estimation and time-adjusted cumulative hazard estimation of disease progression and death were presented.

	Conventional Cox hazard estimation of Disease Progression	Conventional Cox hazard estimation of Death
VARIABLE	HR (95% CI); <i>p</i> value	HR (95% CI); <i>p</i> value
Early-irAEs Yes vs No	0.43 (0.61–1.23); <i>p</i> =0.8702	0.96 (0.58–1.57); <i>p</i> =0.8750
Late-irAEs Yes vs No	0.46 (0.30–0.72); <i>p</i> =0.0005	0.41 (0.22–0.77); <i>p</i> =0.0053
	Time-adjusted Cox hazard estimation of Disease Progression	Time-adjusted Cox hazard estimation of Death
Early-irAEs Yes vs No	0.63 (0.30–1.29); <i>p</i> =0.204	0.79 (0.34–1.86); <i>p</i> =0.598
Late-irAEs Yes vs No	0.75 (0.37–1.56); <i>p</i> =0.452	0.92 (0.49–1.74); <i>p</i> =0.811



C

D



Please wait...

If this message is not eventually replaced by the proper contents of the document, your PDF viewer may not be able to display this type of document.

You can upgrade to the latest version of Adobe Reader for Windows®, Mac, or Linux® by visiting http://www.adobe.com/go/reader_download.

For more assistance with Adobe Reader visit <http://www.adobe.com/go/acrreader>.

Windows is either a registered trademark or a trademark of Microsoft Corporation in the United States and/or other countries. Mac is a trademark of Apple Inc., registered in the United States and other countries. Linux is the registered trademark of Linus Torvalds in the U.S. and other countries.