

1

1 **Title**

2 Case fatality rate in COVID-19: a systematic review and meta-analysis

3

4 **Authors**

5 Chanaka Kahathuduwa (MBBS, PhD)^{1,2,3}, Chaturika Dhanasekara (MBBS, PhD)⁴, Shao-Hua

6 Chin (PhD)⁵

7

8 **Affiliations**

9 ¹ Department of Laboratory Science and Primary Care, Texas Tech University Health Sciences
10 Center, Lubbock, Texas, USA.

11 ² Department of Psychiatry, Texas Tech University Health Sciences Center, Lubbock, Texas,
12 USA.

13 ³ Department of Physiology, University of Peradeniya, Peradeniya, Sri Lanka.

14 ⁴ Department of Surgery, Texas Tech University Health Sciences Center, Lubbock, Texas, USA.

15 ⁵ Department of Medical Science, Protech Pharmservices Corporation, Taipei City, Taiwan.

16

17 **Correspondence to:**

18 Dr. Chanaka N. Kahathuduwa, Department of Laboratory Science and Primary Care, Texas Tech
19 University Health Sciences Center, 3601 4th Street, Lubbock TX 79430

20 Email: chanaka.kahathuduwa@ttuhsc.edu; Phone: +1- 806-743-2800; Fax: +1-806-743-2784

21

22

23 **Abstract**

24 **Background:** Estimating the prevalence of severe or critical illness and case fatality of COVID-
25 19 outbreak in December, 2019 remains a challenge due to biases associated with surveillance,
26 data synthesis and reporting. We aimed to address this limitation in a systematic review and
27 meta-analysis and to examine the clinical, biochemical and radiological risk factors in a meta-
28 regression.

29 **Methods:** PRISMA guidelines were followed. PubMed, Scopus and Web of Science were
30 searched using pre-specified keywords on March 07, 2020. Peer-reviewed empirical studies
31 examining rates of severe illness, critical illness and case fatality among COVID-19 patients
32 were examined. Numerators and denominators to compute the prevalence rates and risk factors
33 were extracted. Random-effects meta-analyses were performed. Results were corrected for
34 publication bias. Meta-regression analyses examined the moderator effects of potential risk
35 factors.

36 **Results:** The meta-analysis included 29 studies representing 2,090 individuals. Pooled rates of
37 severe illness, critical illness and case fatality among COVID-19 patients were 15%, 5% and
38 0.8% respectively. Adjusting for potential underreporting and publication bias, increased these
39 estimates to 26%, 16% and 7.4% respectively. Increasing age and elevated LDH consistently
40 predicted severe / critical disease and case fatality. Hypertension; fever and dyspnea at
41 presentation; and elevated CRP predicted increased severity.

42 **Conclusions:** Risk factors that emerged in our analyses predicting severity and case fatality
43 should inform clinicians to define endophenotypes possessing a greater risk. Estimated case

3

44 fatality rate of 7.4% after correcting for publication bias underscores the importance of strict
45 adherence to preventive measures, case detection, surveillance and reporting.

46

47 **Key Words**

48 COVID-19; Mortality; Case fatality; Systematic review; Meta-analysis; Meta-regression

49

50 **Word Count of Main Text**

51 2,696

52

53

54

55

56

57

58

59

60

61

62

63 **Introduction**

64 A novel corona virus, first identified in Wuhan, China in late 2019, resulted in a
65 pandemic by the first quarter of 2020, contributed by the prolonged survival of the virus in the
66 environment and extended length of pre- or post-symptomatic and potential asymptomatic
67 shedding.¹⁻⁴ While the virus is known to cause only a mild illness in a majority, severe illness
68 characterized by respiratory distress requiring hospital admission is not uncommon.⁵
69 Furthermore, the virus has the potential to precipitate a life-threatening critical illness,
70 characterized by respiratory failure, circulatory shock, sepsis or other organ failure, requiring
71 intensive care.^{6,7}

72 An extensive body of literature that emerged since the outset of the epidemic in China,
73 have examined the rates of severe and critically severe illness as well as case fatality associated
74 with COVID-19. However, the literature on COVID-19 has several limitations. First, due to lack
75 of awareness and limited availability of training and resources to confirm the diagnosis, failure to
76 recognize and code COVID-19 as the potential cause of morbidity and mortality may have
77 contribute to under estimation of the effects of COVID-19.⁸ In fact, a recent estimate suggested
78 that approximately 86% cases of COVID-19 were not documented prior to January 23, 2020.⁴
79 On the contrary, screening of only those who are at high risk may lead to over-reporting of
80 morbidity and mortality. Second, given that most datasets and publications are derived from
81 retrospective chart review, as opposed to prospective methods, high measurement error is
82 inevitable.⁹ Third, the literature on the outcomes are originating mainly from tertiary care
83 settings, distorting the overall clinical picture.¹⁰ Finally, including the same patients in multiple
84 reports examining the same research question without clearly indicating is a major lapse in
85 methodological and ethical standards.¹¹

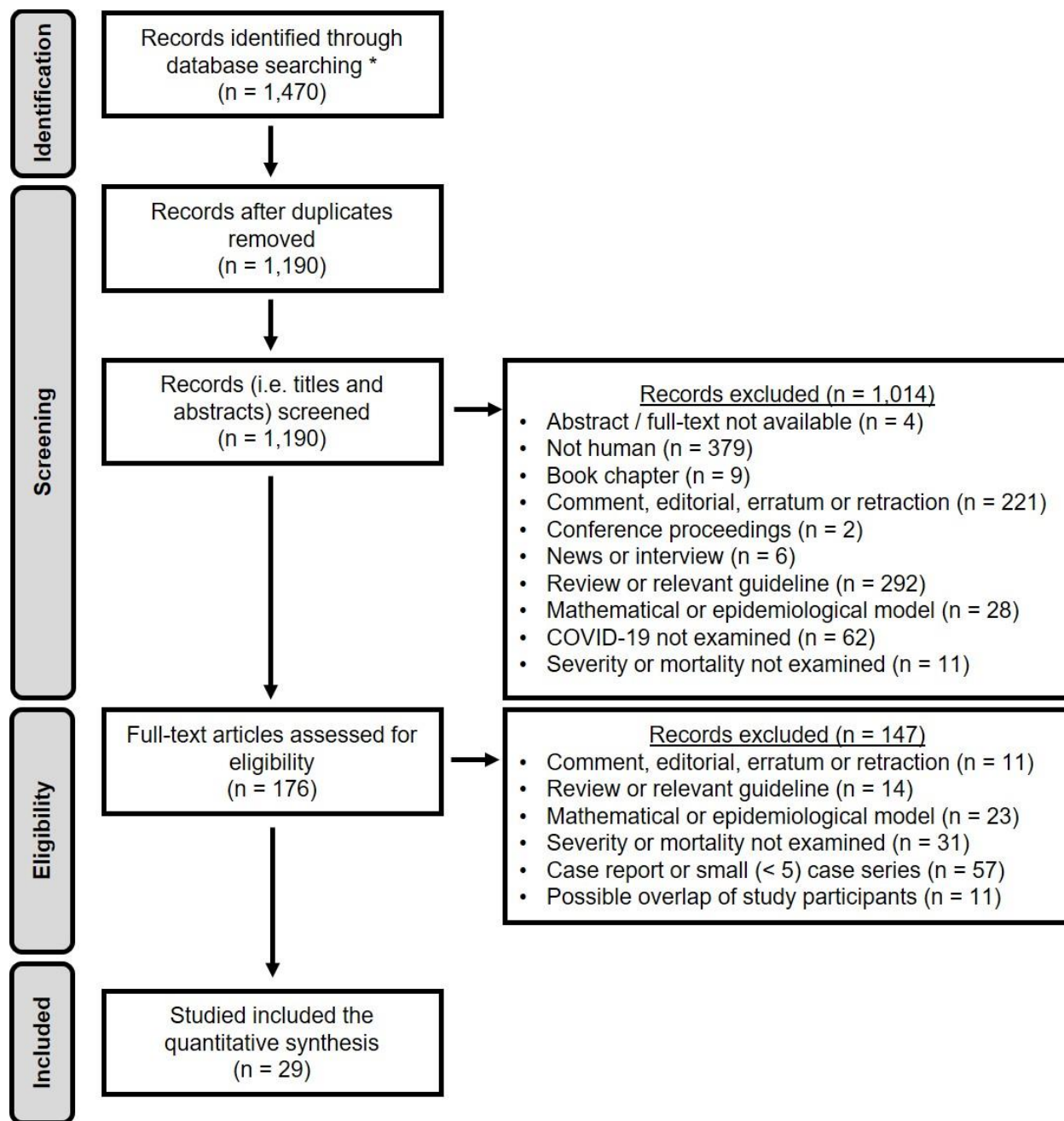
86 As such, we aimed to conduct a systematic review of the available literature to identify
87 publications with minimal potential overlap, in order to estimate the prevalence of severe illness,
88 critical illness and case fatality among individuals with COVID-19 in random-effects meta-
89 analyses to enhance generalizability. More importantly, we aimed to adjust our prevalence
90 estimates by correcting for publication bias and underreporting. We further aimed to examine the
91 effects of clinical, biochemical and radiological risk factors moderating the between-study
92 heterogeneity of the severity and case fatality rates.

93 **Methods**

94 Search strategy and selection criteria

95 All procedures were conducted in accord with the Preferred Reporting Items for
96 Systematic Reviews and Meta-analyses (PRISMA) guidelines. PubMed, Scopus and Web of
97 Science databases were searched on March 7, 2020 with the aim of identifying studies that have
98 been published in year 2020 examining the prevalence of severe illness, critically severe illness
99 and mortality associated with COVID-19 infection using pre-determined keyword combinations
100 (Table S1 in Appendix). No language restrictions were applied. Duplicate records were removed
101 and titles and abstracts were screened for pre-defined eligibility criteria (Figure 1) by two
102 independent raters (CD and CK or SC). Records published in Chinese were translated to
103 American English using Google translator and a native Chinese speaker (SC) examined the
104 original records in Chinese. Full-text manuscripts of records that were deemed eligible in the
105 initial screening were re-examined. All eligible full-text manuscripts were examined using the 9-
106 item Quality Assessment Tool for Case Series Studies of the National Heart, Lung and Blood
107 Institute by two study personnel.

108 **Figure 1:** PRISMA flow chart outlining eligibility criteria and study selection.



109

110 Data were extracted from the eligible manuscripts into pre-defined data-fields. The data
111 fields included the total sample size and number of participants with severe illness, critically
112 severe illness and mortality. Severe illness was operationally defined as having either respiratory
113 distress with $RR \geq 30$ /min, resting peripheral oxygen saturation of $\leq 93\%$ or arterial partial

114 pressure of oxygen ≤ 300 mmHg, requiring hospitalization. Critical illness was defined as having
115 respiratory failure, circulatory shock, end-organ failure or any combination of the above
116 requiring intensive care. In addition, the following variables were extracted as potential
117 covariates of the above outcomes. Central tendency (i.e. mean or median) and dispersion (i.e.
118 SD, SE, 95%CI, IQR or range) of age were extracted. When not reported, study level means and
119 standard deviations for age were imputed from the available statistics (i.e. median, IQR or
120 range).¹² Proportions of the following variables within a study sample were extracted: age ≤ 18
121 years, age ≥ 60 years, female sex, diabetes mellitus, hypertension, heart disease, chronic liver
122 disease, chronic kidney disease, chronic obstructive pulmonary disease, malignancy,
123 immunosuppression (e.g. HIV), smoking and pregnancy. Proportions of patients with specific
124 presenting symptoms (i.e. fever, cough, sore throat, shortness of breath, headache, diarrhea),
125 asymptomatic cases, specific laboratory parameters (i.e. positive nucleic acid test for COVID-19,
126 leukopenia, leukocytosis, thrombocytopenia, lymphopenia, elevated lactate dehydrogenase
127 (LDH), elevated C-reactive protein (CRP), elevated erythrocyte sedimentation rate (ESR), high
128 procalcitonin and high D-dimer based on reference ranges considered in each study) and
129 radiographic features (i.e. no lesions on CT, patchy consolidation, ground glass opacities,
130 peripheral distribution, and bilateral lung involvement or involvement of ≥ 3 lobes).

131 Data analysis

132 Three separate DerSimonian-Laird random-effects meta-analyses were performed using
133 the ‘meta’ package (version 4.11-0) in R statistical software (version 3.6.2) to examine three
134 primary outcomes: the prevalence of a) combined severe or critical COVID-19 infection, b)
135 critically severe COVID-19 infection, and c) COVID-19-associated mortality.¹³ Studies with both
136 zero or 100% proportions were not excluded to ensure incorporation of all available data, which

137 is also known to ensure analytic consistency and minimize bias.¹⁴ Consistency of the findings of
138 the meta-analyses were confirmed by leave-one-out sensitivity analyses.¹⁵ Given that under-
139 reporting and publication bias could result in biased (i.e. smaller) prevalence estimates,
140 publication bias was examined using funnel plots and the effect-sizes were imputed for estimated
141 missing (i.e. unpublished / unreported) studies via the trim-and-fill method.^{16, 17} The meta-
142 analyses were repeated including the effect-size estimates of these potentially missing studies in
143 order to obtain unbiased estimates of the three primary outcomes. Heterogeneity of effect-sizes
144 was quantified by calculating the Higgins' I^2 statistic for each meta-analysis.^{18, 19} To explain the
145 heterogeneity of the studies²⁰, exploratory univariate random-effects meta-regression analyses
146 were performed to examine the moderator effects of each of the covariates described above.

147 **Results**

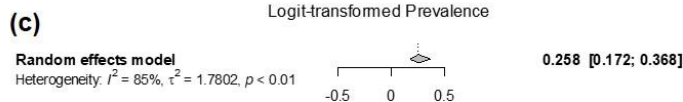
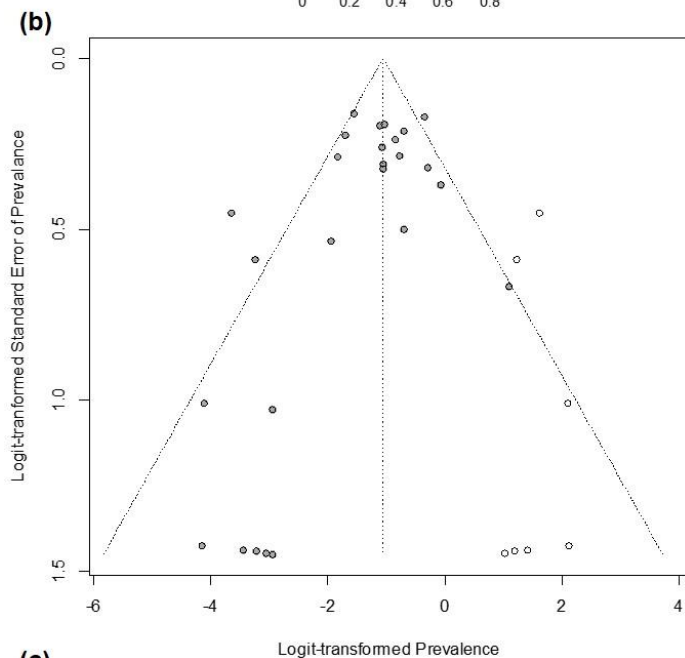
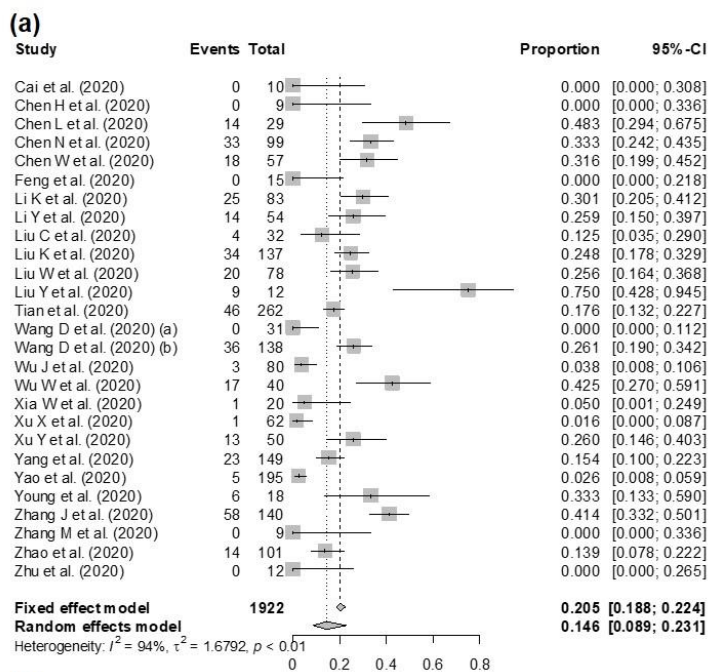
148 Results of database search, subsequent screening and eligibility assessment are
149 summarized in a PRISMA flow diagram (Figure 1). Out of 1,470 records identified in the initial
150 database search, 29 studies including data of 2,090 patients with COVID-19 were deemed
151 eligible. The proportions of females in the study samples ranged from 27.59-100.00%. The mean
152 age of the participants included in the studies ranged from 2-66 years. Four studies recruited
153 entirely on children and one study exclusively recruited pregnant women. The included studies
154 and their quality ratings are summarized in Table S2 with their references. The summary
155 statistics of all covariates are summarized in Table S3 in Appendix.

156 Pooled prevalence of severe or critically severe illness among individuals with COVID-
157 19 infection was estimated to be 14.6% (95%CI, 8.9%-23.1%) in the random-effects meta-
158 analysis (Figure 2a). Excluding any single study from the meta-analysis (i.e. leave-one-out
159 sensitivity analyses) did not significantly change the pooled prevalence estimate. However,

160 funnel plot of the effect-sizes was severely asymmetric, suggesting substantial underreporting or
161 publication bias (Figure 2b). Seven effect-sizes were imputed to correct for the publication bias.
162 When the random-effects meta-analysis was performed including these imputed effect-sizes (i.e.
163 after correcting for publication bias), the prevalence of severe or critical illness increased to
164 25.8% (95% CI, 17.2%-36.8%) (Figure 2c).

165 Significant heterogeneity was observed among the prevalence estimates of severe illness
166 ($\tau^2 = 1.679$; $I^2 = 94\%$, $p < 0.001$). Correcting for publication bias decreased this heterogeneity (I^2
167 $= 85\%$, 95% CI, 80%-89%), however, heterogeneity remained significant ($p < 0.001$).
168 Exploratory univariate random-effects meta-regression analyses conducted with the aim of
169 explaining the heterogeneity using the moderator effects of the considered covariates suggested
170 that each of increasing mean age ($p = 0.006$) and prevalence of age ≥ 60 years ($p < 0.001$),
171 hypertension ($p < 0.001$), chronic kidney disease ($p = 0.038$), malignancy ($p = 0.023$) and
172 chronic obstructive pulmonary disease ($p = 0.025$) were associated with a greater risk of severe
173 or critical illness associated with COVID-19, while the prevalence of age ≤ 18 years ($p = 0.007$)
174 within a sample was associated with a reduced risk of severe or critical illness. Prevalence of the
175 presenting clinical features of fever ($p < 0.001$), dyspnea ($p = 0.028$) and diarrhea ($p = 0.026$);
176 laboratory findings of lymphocytopenia ($p = 0.003$), elevated LDH ($p < 0.001$), CRP ($p < 0.001$)
177 and D-dimer levels ($p < 0.001$); and bilateral lung involvement or involvement of ≥ 3 lung lobes
178 ($p = 0.006$) was associated with increased risk of severe or critically severe illness, while having
179 no radiological features on chest CT was associated with decreased risk of severe illness ($p =$
180 0.003). The results of all univariate meta-regression analyses examining the moderator effects of
181 the covariates on the prevalence of severe or critical illness in COVID-19 infection and their
182 effects on heterogeneity are summarized in Table S4 in Appendix.

183 **Figure 2:** Results of random-effects meta-analysis examining the pooled prevalence of
 184 combined severe and critical illness among individuals with COVID-19. a) Forest plot; b) Funnel
 185 plot depicting publication bias and imputed effect-sizes to correct for publication bias; c) Results
 186 corrected for publication bias.



188 The random effects meta-regression analyses revealed a pooled estimate of 4.8%
189 (95%CI, 2.4%-9.5%) for the prevalence of critical illness in COVID-19 infection (Figure 3a).
190 Leave-one-out meta-regression analyses did not significantly change this estimate. The funnel
191 plot of effect-sizes (Figure 3b) was highly suggestive of underreporting or publication bias.
192 Eleven effect-sizes had to be imputed to statistically correct for this bias and after correction, the
193 pooled prevalence of critical illness in COVID-19 infection increased to 16.3% (95%CI, 9.8% -
194 25.7%) (Figure 3c).

195 Significant heterogeneity of effect-sizes was a concern for the meta-analysis of
196 prevalence of critical illness as well ($\tau^2 = 1.994$; $I^2 = 92\%$, $p < 0.001$). Correcting for publication
197 bias decreased this heterogeneity ($I^2 = 78\%$, 95%CI, 69%-84%), however, heterogeneity
198 remained significant ($p < 0.001$). Univariate meta-regression analyses suggested increased risk of
199 critical illness associated with sample characteristics of increasing mean age ($p = 0.002$),
200 prevalence of age ≥ 60 years ($p < 0.001$), comorbid hypertension ($p < 0.01$), cardiac disease ($p =$
201 0.023) and malignancy ($p = 0.041$). Similarly, prevalence of fever ($p = 0.044$), dyspnea ($p =$
202 0.042) and fatigue ($p = 0.036$) on presentation; prevalence of increased LDH ($p = 0.003$), CRP (p
203 $= 0.008$) and D-dimer ($p = 0.021$) were associated with a greater risk of critical illness (Table S5
204 in Appendix).

205

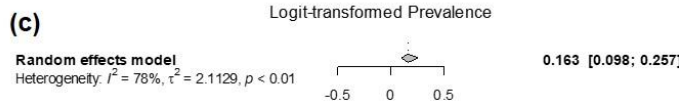
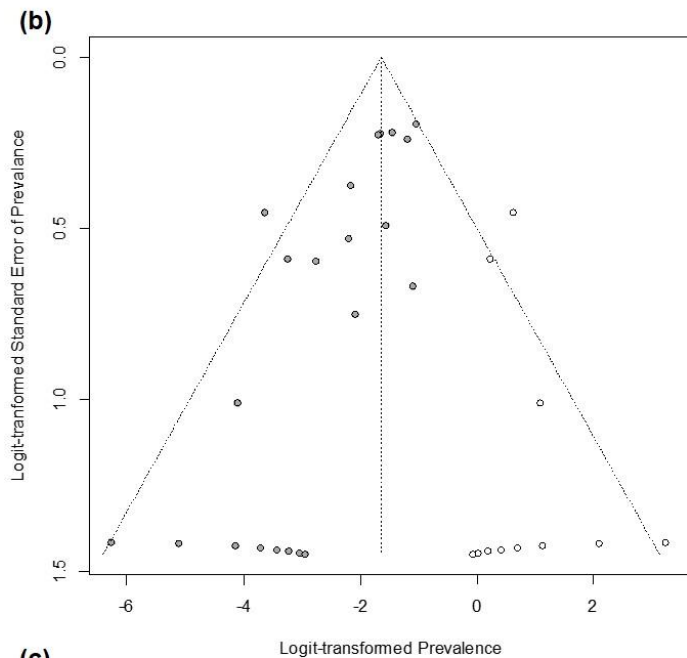
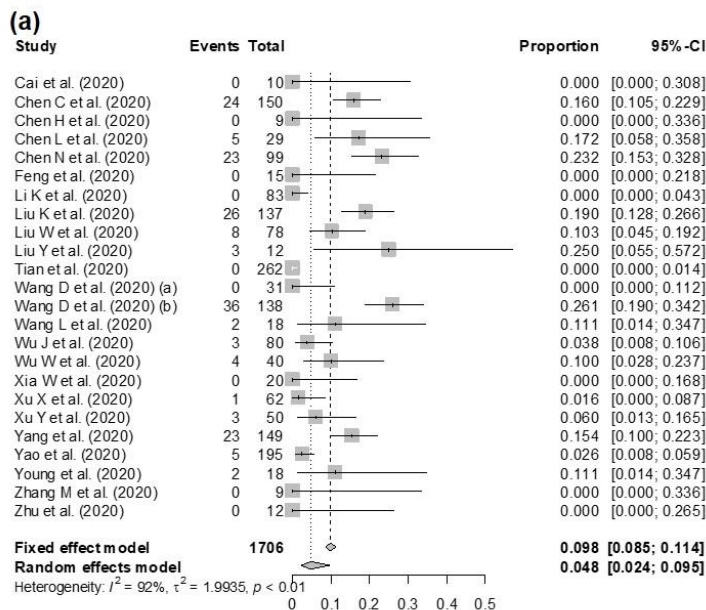
206

207

208

12

209 **Figure 3:** Results of random-effects meta-analysis examining the pooled prevalence of critical
 210 illness among individuals with COVID-19. a) Forest plot; b) Funnel plot depicting publication
 211 bias and imputed effect-sizes to correct for publication bias; c) Results corrected for publication
 212 bias.



213

214 Prevalence of COVID-19 associated mortality was 0.8% (95% CI, 0.2%-2.9%) based on
215 the random-effects meta-analysis (Figure 4a) and this estimate was minimally affected by leave-
216 one-out sensitivity analyses. However, as with severe and critically severe illness, publication
217 bias / potential underreporting was apparent on the funnel plot of effect sizes (Figure 4b).
218 Thirteen effect-sizes were imputed to account for missing / unreported effects in an attempt to
219 statistically correct for the publication bias and conducting the meta-regression analyses with the
220 addition of these effect-sizes revealed a pooled estimate of 7.4% (95% CI, 4.5%-11.9%) for the
221 mortality rate associated with COVID-19 infection (Figure 4c).

222 Heterogeneity of effect-sizes on prevalence of mortality in COVID-19 was also a concern
223 ($\tau^2 = 2.996$; $I^2 = 86\%$, $p < 0.001$). Correction for publication bias decreased the heterogeneity (I^2
224 $= 61\%$, 95% CI, 45%-73%), yet the heterogeneity remained significant ($p < 0.001$). Univariate
225 meta-regression analyses modeling heterogeneity indicated increased mortality risks associated
226 with increasing mean age ($p < 0.001$), prevalence of age ≥ 60 years ($p = 0.011$), presenting with
227 fatigue ($p = 0.048$), leukocytosis ($p = 0.007$), high LDH ($p = 0.030$) and low albumin ($p < 0.001$).
228 Prevalence of age ≤ 18 years ($p = 0.036$) was associated with a decreased risk of COVID-19-
229 associated mortality (Table S6 in Appendix).

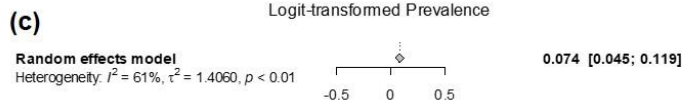
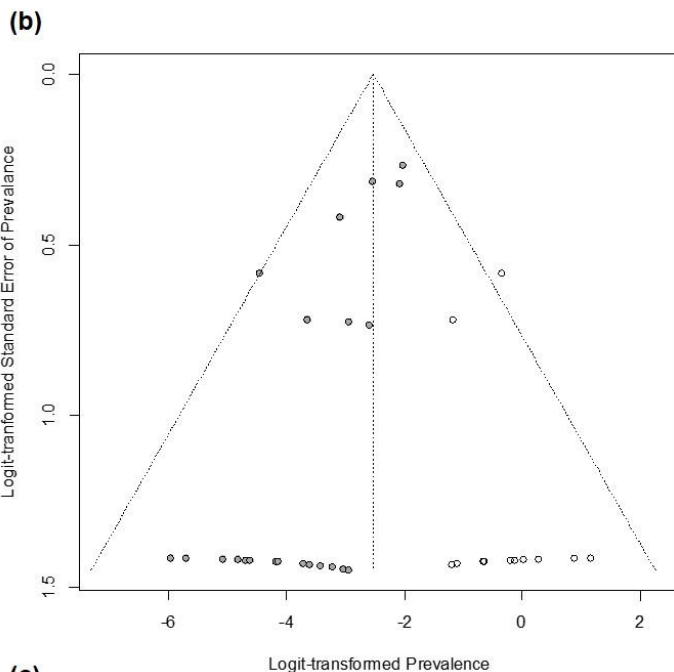
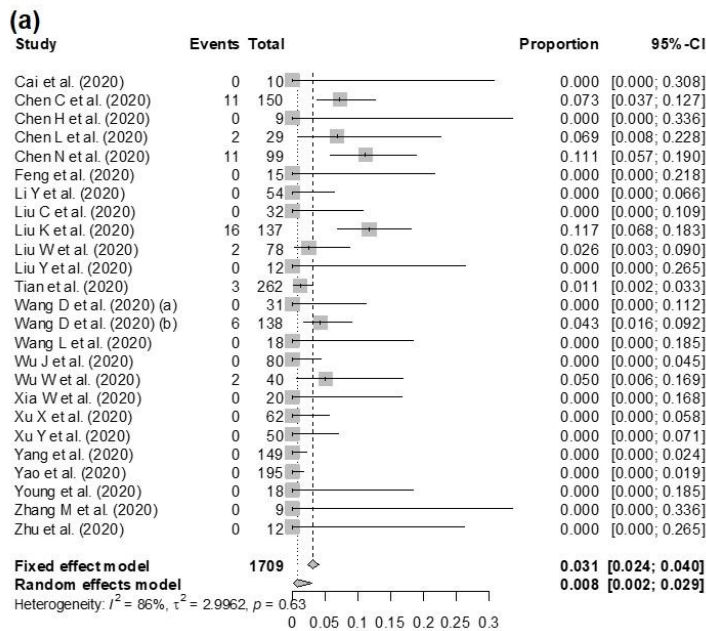
230

231

232

233

234 **Figure 4:** Results of random-effects meta-analysis examining the pooled case fatality rate among
 235 individuals with COVID-19. a) Forest plot; b) Funnel plot depicting publication bias and
 236 imputed effect-sizes to correct for publication bias; c) Results corrected for publication bias.



238 **Discussion**

239 In this systematic review and meta-analysis, we comprehensively and systematically
240 examined the available literature to estimate the prevalence of morbidity and mortality associated
241 with SRAS-CoV-2 infection. Despite the large number of articles that were reviewed, our
242 quantitative synthesis was limited to 29 studies representing data of 2,090 individuals. Our
243 literature-based estimates of severe illness, critical illness and case fatality rates among patients
244 with COVID-19 were 15%, 5% and 0.8% respectively. After adjusting for underreporting and
245 publication bias, COVID-19-associated prevalence of severe illness, critical illness and case
246 fatality increased to 26%, 16% and 7.4% respectively.

247 Our unadjusted random-effects estimates of severe illness requiring hospitalization (15%)
248 and critical illness requiring intensive care admission (5%), are consistent with the estimates of
249 COVID-19-associated morbidity based on large individual-level datasets.²¹As such, the
250 unadjusted findings of our meta-analysis regarding severity of illness corroborate the inferences
251 made based on current surveillance systems. However, the unadjusted mortality rate observed in
252 our analysis (0.8%, 95% CI, 0.2%-2.9%) is lower than the COVID-19-associated mortality rates
253 in China (3.6%) or globally (3.4%) at the end of February, 2020 (i.e. the time represented in the
254 reviewed publications).²²

255 As we have noted in the introduction, retrospective patient data and the literature derived
256 from such data could be systematically biased towards both overestimating and / or
257 underestimating morbidity and mortality. The reviewed studies are largely representing tertiary
258 care settings, of which the capacity may have been overridden minimally, if at all, despite the
259 high reproductive number (R_0) at the time of sampling. As such, the outcomes of our unadjusted
260 random-effects meta-analyses, which accounts for the random variability of effects between

261 studies, can be inferred to be a generalizable representation of morbidity and mortality rates
262 applicable to a well-trained and equipped healthcare setting of which resources are not
263 overwhelmed. This estimate therefore represents COVID-19 associated mortality in regions with
264 a low R_0 .

265 However, reverse-causation bias caused by failing to capture the deaths that may not
266 reach healthcare facilities / be diagnosed prior to death may contribute to underestimation.²³ The
267 effect-sizes imputed to correct for publication bias may in fact represent severity and case fatality
268 rates of settings where the demand exceeds the available resources.²⁴ In fact, our data
269 substantiate the recent forecasts and recommendations to suppress the epidemic growth.²⁵ While
270 optimized utilization of healthcare facilities by maintaining a low R_0 may reduce the mortality
271 rates to as low as 0.8%, overwhelming healthcare resources may increase the overall case fatality
272 rate to 7.4%, or even greater as represented by the effect-sizes we have imputed.²⁶

273 In our meta-regression analyses that examined risk factors, increasing age and age ≥ 60
274 years consistently stood out as a risk factor, while age ≤ 18 years consistently remained a
275 protective factor, being consistent with the current literature. Angiotensin converting enzyme
276 (ACE)-2 receptors are generally upregulated in patients with hypertension or heart failure, who
277 receive ACE-inhibitors and angiotensin-II receptor blockers.²⁷ COVID-19 is known to enter
278 cells by binding to ACE-2 receptors, increasing their risk of infection and development of severe
279 clinical illness.²⁷ Consistently, we observed an increased risk of severity with hypertension and
280 cardiovascular disease. Presenting with fever emerged as a risk factor for severe and critical
281 illness as well as mortality, underscoring the importance body temperature as a screening tool.²⁸

282 Our systematic review has some limitations. First, while we eliminated studies with
283 overlapping samples by screening for overlaps of institutes, study dates and authors, we cannot

284 be 100% certain. Second, high degree of heterogeneity was a concern. However, this should be
285 expected in any meta-analysis due to the variability in methodology and study samples and we
286 used heterogeneity to explore covariates in meta-regression analyses.^{18,20} Third, funnel plots of
287 all three meta-analyses indicating substantial publication bias, limiting the generalizability of
288 uncorrected random-effects meta-analyses. Finally, the protocol was not pre-registered. Use of a
289 systematic search strategy; use of random-effects meta-analyses and meta-regression analyses
290 assuming high heterogeneity of effect-sizes; exploring the etiology of heterogeneity in meta-
291 regression analyses, which also identified risk factors of morbidity and mortality; exploring the
292 validity of our findings in sensitivity analyses; and statistically correcting for publication /
293 underreporting bias are notable strengths of our systematic review and meta-analysis.

294 In conclusion, after correcting for publication bias, COVID-19 associated overall rates of
295 requirement for hospitalization, intensive care and case fatality could be as high as 26%, 16%
296 and 7.4% respectively. This underscores the importance of strict adherence to preventive
297 measures, case detection, surveillance and reporting. Hypertension; fever and dyspnea at
298 presentation; and elevated CRP seem to predict increased disease severity, while increasing age
299 and elevated LDH seem to consistently predict severity and case fatality. These risk factors
300 should inform clinicians to define endophenotypes possessing a greater risk.

301

302

303

304

305

306 **Contributors**

307 CK, CD and SC conceptualized the study; CK and CD conducted the literature search; CK, CD
308 and SC were involved in screening the literature; CK and CD extracted the data; CK performed
309 the meta-analyses and meta-regression analyses; CK and CD wrote the manuscript; all authors
310 read and agreed to the content of the manuscript.

311

312 **Declaration of interests**

313 The study was not funded. The authors have no potential conflicts of interest to declare.

314

315

316

317

318

319

320

321

322

323

324

325 **References**

- 326 1 Huang C, Wang Y, Li X, Ren L, Zhao J, Hu Y, *et al.* Clinical features of patients infected
327 with 2019 novel coronavirus in Wuhan, China. *Lancet.* 2020; 395: 497-506.
- 328 2 Ong SWX, Tan YK, Chia PY, Lee TH, Ng OT, Wong MSY, *et al.* Air, Surface
329 Environmental, and Personal Protective Equipment Contamination by Severe Acute Respiratory
330 Syndrome Coronavirus 2 (SARS-CoV-2) From a Symptomatic Patient. *JAMA.* 2020.
- 331 3 Jiang X, Rayner S, Luo MH. Does SARS-CoV-2 has a longer incubation period than
332 SARS and MERS? *J Med Virol.* 2020; 92: 476-78.
- 333 4 Li R, Pei S, Chen B, Song Y, Zhang T, Yang W, *et al.* Substantial undocumented
334 infection facilitates the rapid dissemination of novel coronavirus (SARS-CoV2). *Science.* 2020.
- 335 5 Wu Z, McGoogan JM. Characteristics of and Important Lessons From the Coronavirus
336 Disease 2019 (COVID-19) Outbreak in China: Summary of a Report of 72 314 Cases From the
337 Chinese Center for Disease Control and Prevention. *JAMA.* 2020.
- 338 6 Yang X, Yu Y, Xu J, Shu H, Xia J, Liu H, *et al.* Clinical course and outcomes of
339 critically ill patients with SARS-CoV-2 pneumonia in Wuhan, China: a single-centered,
340 retrospective, observational study. *Lancet Respir Med.* 2020.
- 341 7 Zhou F, Yu T, Du R, Fan G, Liu Y, Liu Z, *et al.* Clinical course and risk factors for
342 mortality of adult inpatients with COVID-19 in Wuhan, China: a retrospective cohort study.
343 *Lancet.* 2020.
- 344 8 Lau H, Khosrawipour V, Kocbach P, Mikolajczyk A, Ichii H, Schubert J, *et al.*
345 Internationally lost COVID-19 cases. *Journal of Microbiology, Immunology and Infection.* 2020.
- 346 9 Matt V, Matthew H. The retrospective chart review: important methodological
347 considerations. *Journal of educational evaluation for health professions.* 2013; 10.

- 348 10 Delgado-Rodríguez M, Llorca J. Bias. *J Epidemiol Community Health*. 2004; 58: 635-41.
- 349 11 Bauchner H, Golub RM, Zylke J. Editorial Concern-Possible Reporting of the Same
350 Patients With COVID-19 in Different Reports. *JAMA*. 2020.
- 351 12 Wan X, Wang W, Liu J, Tong T. Estimating the sample mean and standard deviation
352 from the sample size, median, range and/or interquartile range. *BMC Med Res Methodol*. 2014;
353 14: 135.
- 354 13 DerSimonian R, Laird N. Meta-analysis in clinical trials. *Controlled clinical trials*. 1986;
355 7: 177-88.
- 356 14 Friedrich JO, Adhikari NK, Beyene J. Inclusion of zero total event trials in meta-analyses
357 maintains analytic consistency and incorporates all available data. *BMC Med Res Methodol*.
358 2007; 7: 5.
- 359 15 Patsopoulos NA, Evangelou E, Ioannidis JP. Sensitivity of between-study heterogeneity
360 in meta-analysis: proposed metrics and empirical evaluation. *Int J Epidemiol*. 2008; 37: 1148-57.
- 361 16 Duval S, Tweedie R. A nonparametric “trim and fill” method of accounting for
362 publication bias in meta-analysis. *Journal of the American Statistical Association*. 2000; 95: 89-
363 98.
- 364 17 Duval S, Tweedie R. Trim and fill: A simple funnel-plot-based method of testing and
365 adjusting for publication bias in meta-analysis. *Biometrics*. 2000; 56: 455-63.
- 366 18 Higgins J, Thompson SG. Quantifying heterogeneity in a meta-analysis. *Statistics in*
367 *medicine*. 2002; 21: 1539-58.
- 368 19 Higgins JP, Green S. *Cochrane handbook for systematic reviews of interventions*: Wiley
369 Online Library 2008.

21

370 20 Thompson SG, Sharp SJ. Explaining heterogeneity in meta-analysis: a comparison of
371 methods. *Statistics in medicine*. 1999; 18: 2693-708.

372 21 Organization WH. Clinical management of severe acute respiratory infection (SARI)
373 when COVID-19 disease is suspected: interim guidance, 13 March 2020. World Health
374 Organization: 2020.

375 22 Organization WH. Coronavirus disease 2019 (COVID-19)
376 Situation Report – 40. World Health Organization: 2020.

377 23 Lipsitch M, Donnelly CA, Fraser C, Blake IM, Cori A, Dorigatti I, *et al*. Potential Biases
378 in Estimating Absolute and Relative Case-Fatality Risks during Outbreaks. *PLoS Negl Trop Dis*.
379 2015; 9: e0003846.

380 24 Ji Y, Ma Z, Peppelenbosch MP, Pan Q. Potential association between COVID-19
381 mortality and health-care resource availability. *Lancet Glob Health*. 2020.

382 25 Ferguson NM, Laydon D, Nedjati-Gilani G, Imai N, Ainslie K, Baguelin M, *et al*. Impact
383 of non-pharmaceutical interventions (NPIs) to reduce COVID-19 mortality and healthcare
384 demand.

385 26 Baud D, Qi X, Nielsen-Saines K, Musso D, Pomar L, Favre G. Real estimates of
386 mortality following COVID-19 infection. *Lancet Infect Dis*. 2020.

387 27 Fang L, Karakiulakis G, Roth M. Are patients with hypertension and diabetes mellitus at
388 increased risk for COVID-19 infection? *Lancet Respir Med*. 2020.

389 28 Mao B, Liu Y, Chai Y-h, Jin X-y, Luo HW, Yang J-w, *et al*. Early Discern COVID-19
390 from the Suspected Patients via Fever Clinics: A Multicenter Cohort Study from Shanghai. 2020.

391

392

393

Supplementary Appendix

Title

395 Case fatality rate in COVID-19: a systematic review and meta-analysis

396

Authors

398 Chanaka Kahathuduwa (MBBS, PhD)^{1,2,3}, Chathurika Dhanasekara (MBBS, PhD)⁴, Shao-Hua

399 Chin (PhD)⁵

400

Affiliations

402 ¹ Department of Laboratory Science and Primary Care, Texas Tech University Health Sciences
403 Center, Lubbock, Texas, USA.

404 ² Department of Psychiatry, Texas Tech University Health Sciences Center, Lubbock, Texas,
405 USA.

406 ³ Department of Physiology, University of Peradeniya, Peradeniya, Sri Lanka.

407 ⁴ Department of Surgery, Texas Tech University Health Sciences Center, Lubbock, Texas, USA.

408 ⁵ Department of Medical Science, Protech Pharmservices Corporation, Taipei City, Taiwan.

409

Correspondence to:

411 Dr. Chanaka N. Kahathuduwa, Department of Laboratory Science and Primary Care, Texas Tech
412 University Health Sciences Center, 3601 4th Street, Lubbock TX 79430

413 Email: chanaka.kahathuduwa@ttuhsc.edu; Phone: +1- 806-743-2800; Fax: +1-806-743-2784

414

415 **Table S1:** Keywords and keyword combinations used to screen the PubMed, Scopus, and Web
416 of Science electronic databases

(covid-19) OR (((corona OR coronavirus)) AND wuhan) OR (2019 novel coronavirus infection) OR (COVID19) OR (coronavirus disease 2019) OR (coronavirus disease-19) OR (2019-nCoV disease) OR (2019 novel coronavirus disease) OR (2019-nCoV infection)
--

417
418
419
420
421
422
423
424
425
426
427
428
429
430

431 **Table S2:** Studies meeting eligibility criteria.

Study	Country	Study Site	Study Period	Sample Size	Severe / Critical Illness	Critical Illness	Mortality	Quality †		Special Remarks
								Rater 1	Rater 2	
Cai et al. (2020) ¹	China	Children's Hospital in Shanghai, Hainan, Hefei and Qingdao	Jan19-Feb03	10	0	0	0	Good	Good	Children
Chen C et al. (2020) ²	China	Fever clinic of Tongji Hospital in Wuhan	Jan-Feb	150	NA	24	11	Good	Good	
Chen H et al. (2020) ³	China	Zhongnan Hospital of Wuhan University	Jan20-Jan31	9	0	0	0	Good	Good	Pregnant women
Chen L et al. (2020) ⁴	China	Tongji hospital affiliated to Tongji medical college of Huazhong University of Science and Technology	Jan14-Jan29	29	14	5	2	Good	Good	
Chen N et al. (2020) ⁵	China	Wuhan Jinyintan Hospital	Jan01-Jan20	99	33	23	11	Good	Good	

Chen W et al. (2020) ⁶	China	Guangzhou Eighth People's Hospital	NA	57	18	NA	NA	Fair	Poor	
Feng et al. (2020)	China	Third People's Hospital of Shenzhen	Jan16-Feb06	15	0	0	0	Fair	Good	Children
Li K et al. (2020) ⁷	China	Second Affiliated Hospital of Chongqing Medical University	Jan-Feb	83	25	0	NA	Good	Good	
Li Y et al. (2020) ⁸	China	Wuhan No. 4 Hospital	Jan-Feb	54	14	NA	0	Good	Good	
Liu C et al. (2020) ⁹	China	First Hospital of Lanzhou University	Jan23-Feb08	32	4	NA	0	Fair	Fair	
Liu K et al. (2020) ¹⁰	China	Respiratory Departments of Nine Tertiary Hospitals in Hubei	Dec30-Jan24	137	34	26	16	Good	Good	
Liu W et al. (2020) ¹¹	China	Three Tertiary Care Centers in Wuhan -	Dec30-Jan15	78	20	8	2	Good	Good	

		The Central Hospital; Tongji Hospital; Wuhan Pulmonary Hospital								
Liu Y et al. (2020) ¹²	China	Shenzhen Third People's Hospital	Jan11-Jan20	12	9	3	0	Good	Good	
Tian et al. (2020) ¹³	China	Beijing Emergency Medical Service (EMS)	Jan20-Feb10	262	46	0	3	Good	Good	
Wang D et al. (2020) (a) ¹⁴	China	21 hospitals in 17 cities of Northern China	Jan25-Feb21	31	0	0	0	Fair	Good	Children
Wang D et al. (2020) (b) ¹⁵	China	Zhongnan Hospital of Wuhan University	Jan01-Jan28	138	36	36	6	Good	Good	
Wang L et al. (2020) ¹⁶	China	e First Affiliated Hospital of Zhengzhou University	Jan21-Feb05	18	NA	2	0	Good	Good	
Wu J et al.	China	Three Grade IIIA	Jan22-Feb14	80	3	3	0	Good	Good	

(2020) 17		hospitals of Jiangsu								
Wu W et al. (2020) 18	China	Breguet Department Store	Jan19- Jan25	40	17	4	2	Good	Good	
Xia W et al. (2020) 19	China	Wuhan Children's Hospital	Jan23- Feb8	20	1	0	0	Fair	Good	Children
Xu X et al. (2020) 20	China	Zhejiang Province	Jan10- Jan26	62	1	1	0	Good	Good	
Xu Y et al. (2020) 21	China	The Fifth Medical Center of Chinese PLA General Hospital	Jan-Feb	50	13	3	0	Good	Good	
Yang et al. (2020) 22	China	Multi-center study in Wenzhou city, Zhejiang	Jan17- Feb10	149	23	23	0	Good	Good	
Yao et al. (2020) 23	China	Shaanxi Province	Jan01- Feb07	195	5	5	0	Fair	Good	
Young et al.	Singapore	Singapore	Jan22- Jan31	18	6	2	0	Good	Good	

(2020) 24										
Zhang J et al. (2020) 25	China	No. 7 Hospital of Wuhan	Jan16- Feb03	140	58	NA	NA	Good	Good	
Zhang M et al. (2020) 26	China	Beijing Tsinghua Changgeng Hospital	Jan18- Feb03	9	0	0	0	Good	Good	
Zhao et al. (2020) 27	China	Radiology Quality Control Center, Hunan	NA	101	14	NA	NA	Good	Fair	
Zhu et al. (2020) 28	China	Second Xiangya Hospital of Central South University	Dec01- Feb15	12	0	0	0	Good	Good	

432

433 † Quality of studies were examined using the National Heart, Lung and Blood Institute's 9-item

434 Quality Assessment Tool for Case Series Studies.

435

436 **Table S3:** Summary statistics of all covariates used in the univariate meta-regression analyses.

Variable	Events	Total	Studies	Pooled Effect Size (95%CI) †	
				Fixed-effects model	Random-effects model
Demographic variables					
Age (years)	NA	2033	28	32.847 (32.344 - 33.350)	41.148 (32.737 - 49.558)
Age ≤ 18 years	110	1349	22	0.082 (0.068 - 0.097)	0.025 (0.002 - 0.274)
Age ≥ 60 years	178	975	15	0.183 (0.160 - 0.208)	0.064 (0.019 - 0.196)
Female	941	2033	28	0.463 (0.441 - 0.485)	0.466 (0.431 - 0.500)
Past medical history					
DM-2	123	1420	22	0.087 (0.073 - 0.102)	0.102 (0.069 - 0.148)
Hypertension	228	1090	19	0.209 (0.186 - 0.234)	0.120 (0.069 - 0.201)
Cardiac disease	127	1121	18	0.113 (0.096 - 0.133)	0.060 (0.029 - 0.120)
Chronic liver disease	23	926	18	0.025 (0.017 - 0.037)	0.010 (0.003 - 0.037)
Chronic kidney disease	12	926	18	0.013 (0.007 - 0.023)	0.013 (0.007 - 0.023)
Malignancy	34	1216	19	0.028 (0.020 - 0.039)	0.024 (0.014 - 0.040)
COPD	19	1014	12	0.019 (0.012 - 0.029)	0.018 (0.010 - 0.031)
Low immunity	2	236	3	0.008 (0.002 - 0.033)	0.008 (0.002 - 0.033)
Smoking	16	247	3	0.065 (0.040 - 0.103)	0.065 (0.040 - 0.103)
Pregnant	11	506	11	0.022 (0.012 - 0.039)	0.000 (0.000 - 0.386)
Presenting symptoms					
Asymptomatic	24	618	11	0.039 (0.026 - 0.057)	0.009 (0.001 - 0.084)
Fever	1310	1578	24	0.830 (0.811 - 0.848)	0.833 (0.778 - 0.877)
Cough	992	1656	25	0.599 (0.575 - 0.622)	0.619 (0.539 - 0.693)
Sore throat	121	909	16	0.133 (0.113 - 0.157)	0.131 (0.085 - 0.197)
Tachypnea	138	325	7	0.425 (0.372 - 0.479)	0.084 (0.010 - 0.461)
Dyspnea	245	1452	20	0.169 (0.150 - 0.189)	0.102 (0.053 - 0.186)
Myalgia	163	801	14	0.203 (0.177 - 0.233)	0.192 (0.123 - 0.288)
Fatigue	328	762	11	0.430 (0.396 - 0.466)	0.336 (0.198 - 0.508)
Headache	136	1253	16	0.109 (0.092 - 0.127)	0.103 (0.071 - 0.146)
Diarrhea	104	1288	21	0.081 (0.067 - 0.097)	0.078 (0.059 - 0.104)

Laboratory investigations ‡					
Nucleic acid test positive	1529	1617	22	0.946 (0.933 - 0.956)	1.000 (0.916 - 1.000)
Leukopenia	258	940	16	0.274 (0.247 - 0.304)	0.217 (0.111 - 0.380)
Leukocytosis	99	899	16	0.110 (0.091 - 0.132)	0.082 (0.048 - 0.137)
Thrombocytopenia	73	472	8	0.155 (0.125 - 0.190)	0.137 (0.078 - 0.229)
Lymphopenia	476	988	17	0.482 (0.451 - 0.513)	0.410 (0.289 - 0.543)
High LDH	220	526	9	0.418 (0.377 - 0.461)	0.433 (0.242 - 0.646)
Low Albumin	156	423	6	0.369 (0.324 - 0.416)	0.340 (0.063 - 0.797)
High CRP	650	930	17	0.699 (0.669 - 0.728)	0.668 (0.534 - 0.780)
High ESR	193	245	4	0.788 (0.732 - 0.834)	0.795 (0.701 - 0.866)
High procalcitonin	152	594	12	0.256 (0.222 - 0.293)	0.175 (0.071 - 0.370)
High D-dimer	117	504	7	0.232 (0.197 - 0.271)	0.188 (0.095 - 0.338)
Radiological features on CT thorax					
No lesion on CT	95	894	16	0.106 (0.088 - 0.128)	0.078 (0.035 - 0.165)
Patchy consolidation	231	551	11	0.419 (0.379 - 0.461)	0.418 (0.314 - 0.530)
Ground glass opacities	416	754	15	0.552 (0.516 - 0.587)	0.693 (0.487 - 0.843)
Peripheral distribution	177	229	6	0.773 (0.714 - 0.823)	0.849 (0.516 - 0.967)
Bilateral or ≥ 3 lobe involvement	721	953	15	0.757 (0.728 - 0.783)	0.711 (0.575 - 0.817)

437

438 † Effect size measure is mean for age. For all other variables, it is the proportion of individuals (i.e.
 439 events) out of total sample size.

440 ‡ Biochemical parameters have been interpreted as low / high based on reference ranges considered in
 441 each study.

442

443

444 **Table S4:** Results of all univariate meta-regression analyses examining the moderator effects of
 445 the covariates on the prevalence of combined severe or critical illness in COVID-19.

Model	Variable	Coefficient †	SE	95%CI	Z	p
Demographic variables						
1	Intercept	-5.921	1.236	-8.344 to -3.498	-4.789	<0.001
	Age	0.093	0.026	0.043 to 0.144	3.634	<0.001
	k = 26, $\tau^2 = 0.781$, I ² = 88.428, QM = 13.206					
2	Intercept	-1.400	0.310	-2.006 to -0.794	-4.524	<0.001
	Age ≤ 18 years	-3.450	1.287	-5.972 to -0.927	-2.680	0.007
	k = 21, $\tau^2 = 1.172$, I ² = 91.709, QM = 7.182					
3	Intercept	-3.599	0.461	-4.502 to -2.695	-7.806	<0.001
	Age ≥ 60 years	8.367	1.720	4.997 to 11.738	4.866	<0.001
	k = 15, $\tau^2 = 0.573$, I ² = 77.484, QM = 23.679					
4	Intercept	-0.491	1.196	-2.836 to 1.853	-0.411	0.681
	Female	-2.836	2.517	-7.769 to 2.397	-1.127	0.260
	k = 26, $\tau^2 = 1.771$, I ² = 94.515, QM = 1.270					
Past medical history						
5	Intercept	-2.344	0.471	-3.267 to -1.421	-4.978	<0.001
	DM-2	3.632	2.161	-0.603 to 7.868	1.681	0.093
	k = 20, $\tau^2 = 1.532$, I ² = 93.418, QM = 2.826					
6	Intercept	-2.966	0.556	-4.056 to -1.877	-5.338	<0.001
	Hypertension	8.381	2.456	3.567 to 13.194	3.413	<0.001
	k = 17, $\tau^2 = 1.009$, I ² = 88.950, QM = 11.646					
7	Intercept	-2.112	0.476	-3.045 to -1.179	-4.436	<0.001
	Cardiac disease	4.801	2.649	-0.392 to 9.993	1.812	0.070
	k = 16, $\tau^2 = 1.211$, I ² = 91.573, QM = 3.283					
8	Intercept	-2.274	0.654	-3.555 to -0.992	-3.476	<0.001
	Chronic liver disease	4.698	15.493	-25.668 to 35.064	0.303	0.762
	k = 16, $\tau^2 = 3.223$, I ² = 94.655, QM = 0.092					
9	Intercept	-2.411	0.507	-3.405 to -1.417	-4.756	<0.001
	Chronic kidney disease	21.831	10.504	1.244 to 42.419	2.078	0.038
	k = 16, $\tau^2 = 2.235$, I ² = 93.455, QM = 4.320					
10	Intercept	-2.366	0.441	-3.230 to -1.501	-5.363	<0.001
	Malignancy	24.845	10.920	3.442 to 46.247	2.275	0.023
	k = 17, $\tau^2 = 0.960$, I ² = 89.464, QM = 5.176					
11	Intercept	-1.827	0.399	-2.609 to -1.045	-4.580	<0.001
	COPD	27.432	12.227	3.467 to 51.397	2.243	0.025
	k = 11, $\tau^2 = 0.733$, I ² = 91.466, QM = 5.033					

12	Intercept	-2.020	0.713	-3.416 to -5.623	-2.835	0.005
	Low immunity	66.920	78.023	-86.003 to 219.842	0.858	0.391
	k = 3, $\tau_2 = 0.733$, I ² = 71.082, QM = 0.736					
13	Intercept	-8.862	6.638	-21.872 to 4.148	-1.335	0.182
	Smoking	127.878	101.797	-71.641 to 327.397	1.256	0.209
	k = 3, $\tau_2 = 0.048$, I ² = 50.308, QM = 1.578					
14	Intercept	-2.088	0.618	-3.299 to -2.876	-3.377	<0.001
	Pregnant	-4.395	6.052	-16.256 to 7.466	-0.726	0.468
	k = 10, $\tau_2 = 2.133$, I ² = 90.869, QM = 0.527					
Presenting symptoms						
15	Intercept	-1.287	0.486	-2.240 to -2.334	-2.647	0.008
	Asymptomatic	-5.774	4.980	-15.534 to 3.987	-1.159	0.246
	k = 11, $\tau_2 = 1.549$, I ² = 92.081, QM = 1.344					
16	Intercept	-8.760	2.003	-12.685 to -4.835	-4.374	<0.001
	Fever	8.772	2.378	4.111 to 13.432	3.689	<0.001
	k = 23, $\tau_2 = 0.641$, I ² = 86.409, QM = 13.607					
17	Intercept	-3.308	0.987	-5.242 to -1.374	-3.353	<0.001
	Cough	2.736	1.492	-0.187 to 5.665	1.834	0.067
	k = 24, $\tau_2 = 1.280$, I ² = 92.822, QM = 3.365					
18	Intercept	-1.698	0.456	-2.590 to -7.854	-3.725	<0.001
	Sore throat	-0.410	1.971	-4.272 to 3.452	-0.208	0.835
	k = 15, $\tau_2 = 1.035$, I ² = 89.939, QM = 0.043					
19	Intercept	-3.773	1.205	-6.134 to -1.411	-3.131	0.002
	Tachypnea	5.104	2.616	-0.023 to 19.231	1.951	0.051
	k = 7, $\tau_2 = 1.774$, I ² = 89.572, QM = 3.806					
20	Intercept	-1.997	0.354	-2.691 to -1.322	-5.636	<0.001
	Dyspnea	3.056	1.392	0.327 to 5.784	2.195	0.028
	k = 19, $\tau_2 = 0.680$, I ² = 88.759, QM = 4.817					
21	Intercept	-2.227	0.749	-3.695 to -6.758	-2.972	0.003
	Myalgia	3.541	2.648	-1.648 to 8.731	1.338	0.181
	k = 13, $\tau_2 = 1.323$, I ² = 91.941, QM = 1.789					
22	Intercept	-2.466	0.685	-3.809 to -1.124	-3.600	<0.001
	Fatigue	2.702	1.388	-0.018 to 5.421	1.947	0.052
	k = 11, $\tau_2 = 0.730$, I ² = 87.246, QM = 3.791					
23	Intercept	-0.803	0.471	-1.727 to 1.129	-1.705	0.088
	Headache	-5.361	3.194	-11.621 to 4.899	-1.679	0.093
	k = 15, $\tau_2 = 1.153$, I ² = 93.398, QM = 2.817					
24	Intercept	-2.590	0.566	-3.699 to -1.482	-4.579	<0.001
	Diarrhea	11.680	5.237	1.415 to 21.944	2.230	0.026
	k = 20, $\tau_2 = 1.139$, I ² = 91.537, QM = 4.974					

Laboratory investigations ‡						
25	Intercept	-0.521	0.404	-1.311 to 8.272	-1.291	0.197
	Nucleic acid test positive	-1.370	0.423	-2.199 to -9.545	-3.235	0.001
	k = 21, $\tau_2 = 1.477$, I2 = 94.363, QM = 10.464					
26	Intercept	-1.904	0.734	-3.343 to -3.465	-2.594	0.009
	Leukopenia	-0.357	1.926	-4.132 to 3.418	-0.185	0.853
	k = 15, $\tau_2 = 2.855$, I2 = 96.044, QM = 0.034					
27	Intercept	-3.166	0.857	-4.845 to -1.487	-3.696	<0.001
	Leukocytosis	8.608	5.659	-2.482 to 19.699	1.521	0.128
	k = 15, $\tau_2 = 2.690$, I2 = 95.111, QM = 2.314					
28	Intercept	-3.945	1.260	-6.414 to -1.476	-3.132	0.002
	Thrombocytopenia	10.488	5.507	-0.306 to 21.282	1.904	0.057
	k = 8, $\tau_2 = 2.917$, I2 = 94.454, QM = 3.627					
29	Intercept	-3.871	0.840	-5.518 to -2.224	-4.607	<0.001
	Lymphopenia	4.734	1.574	1.649 to 7.823	3.008	0.003
	k = 16, $\tau_2 = 1.213$, I2 = 90.850, QM = 9.046					
30	Intercept	-4.437	0.686	-5.781 to -3.192	-6.467	<0.001
	High LDH	5.769	1.164	3.488 to 8.054	4.957	<0.001
	k = 9, $\tau_2 = 0.278$, I2 = 58.546, QM = 24.572					
31	Intercept	-1.507	0.734	-2.945 to -5.869	-2.053	0.040
	Low Albumin	1.299	1.384	-1.414 to 4.312	0.938	0.348
	k = 6, $\tau_2 = 1.210$, I2 = 89.774, QM = 0.880					
32	Intercept	-4.645	1.018	-6.641 to -2.649	-4.562	<0.001
	High CRP	4.688	1.392	1.959 to 7.417	3.367	<0.001
	k = 16, $\tau_2 = 0.697$, I2 = 85.579, QM = 11.335					
33	Intercept	2.608	6.597	-10.323 to 15.538	0.395	0.693
	High ESR	-5.846	8.398	-22.305 to 11.613	-0.696	0.486
	k = 4, $\tau_2 = 1.636$, I2 = 84.528, QM = 0.485					
34	Intercept	-2.535	0.965	-4.427 to -0.643	-2.626	0.009
	High procalcitonin	1.146	2.476	-3.707 to 5.999	0.463	0.644
	k = 11, $\tau_2 = 3.562$, I2 = 95.576, QM = 0.214					
35	Intercept	-2.962	0.289	-3.528 to -2.395	-10.253	<0.001
	High D-dimer	6.110	0.830	4.484 to 7.736	7.365	<0.001
	k = 7, $\tau_2 = 0.000$, I2 = 0.000, QM = 54.243					
Radiological features on CT thorax						
36	Intercept	-1.016	0.468	-1.932 to -8.798	-2.170	0.030
	No lesions on CT	-10.053	3.413	-16.743 to -3.363	-2.945	0.003
	k = 15, $\tau_2 = 1.239$, I2 = 89.806, QM = 8.675					
37	Intercept	-2.639	1.142	-4.878 to -2.461	-2.311	0.021
	Patchy consolidations	1.121	2.265	-3.318 to 5.559	0.495	0.621
	k = 10, $\tau_2 = 1.261$, I2 = 88.147, QM = 0.245					

38	Intercept	-2.231	1.134	-4.454 to -7.938	-1.967	0.049
	Ground glass opacities	0.089	1.650	-3.144 to 3.322	0.054	0.957
	k = 14, $\tau^2 = 2.583$, I ² = 94.256, QM = 0.003					
39	Intercept	-6.172	3.565	-13.159 to 7.816	-1.731	0.083
	Peripheral distribution	3.966	3.959	-3.794 to 11.725	1.002	0.317
	k = 6, $\tau^2 = 1.767$, I ² = 83.815, QM = 1.003					
40	Intercept	-4.974	1.267	-7.457 to -2.492	-3.927	<0.001
	Bilateral or ≥ 3 lobe involvement	4.435	1.627	1.246 to 7.624	2.725	0.006
	k = 14, $\tau^2 = 0.696$, I ² = 87.270, QM = 7.428					

448

449 † Coefficients represent logit-transformed proportions; positive coefficients suggest increased risk and
 450 negative coefficients suggest decreased risk.

451 ‡ Biochemical parameters have been interpreted as low / high based on reference ranges considered in
 452 each study.

453

454

455

456

457

458

459

460

461

462 **Table S5:** Results of all univariate meta-regression analyses examining the moderator effects of
 463 the covariates on the prevalence critical illness in COVID-19.

Model	Variable	Coefficient †	SE	95%CI	Z	p
Demographic variables						
1	Intercept	-8.153	2.031	-12.134 to -4.173	-4.014	<0.001
	Age	0.115	0.041	0.033 to 6.196	2.774	0.006
	k = 24, $\tau^2 = 1.094$, I ² = 85.333, QM = 7.694					
2	Intercept	-2.407	0.527	-3.440 to -1.374	-4.567	<0.001
	Age ≤ 18 years	-7.526	6.892	-21.034 to 5.981	-1.092	0.275
	k = 18, $\tau^2 = 1.635$, I ² = 87.100, QM = 1.193					
3	Intercept	-5.479	0.884	-7.211 to -3.747	-6.200	<0.001
	Age ≥ 60 years	8.868	2.647	3.678 to 14.757	3.349	<0.001
	k = 13, $\tau^2 = 0.981$, I ² = 69.156, QM = 11.219					
4	Intercept	-1.157	1.429	-3.957 to 1.644	-0.809	0.418
	Female	-3.934	3.082	-9.975 to 2.157	-1.276	0.202
	k = 24, $\tau^2 = 1.890$, I ² = 90.774, QM = 1.629					
Past medical history						
5	Intercept	-2.712	0.510	-3.711 to -1.713	-5.319	<0.001
	DM-2	0.581	2.220	-3.770 to 4.932	0.262	0.794
	k = 19, $\tau^2 = 1.405$, I ² = 89.782, QM = 0.068					
6	Intercept	-4.091	0.676	-5.416 to -2.765	-6.050	<0.001
	Hypertension	8.385	2.518	3.450 to 13.321	3.330	<0.001
	k = 17, $\tau^2 = 0.615$, I ² = 74.934, QM = 11.090					
7	Intercept	-3.386	0.657	-4.674 to -2.597	-5.150	<0.001
	Cardiac disease	6.745	2.970	0.924 to 12.565	2.271	0.023
	k = 15, $\tau^2 = 1.058$, I ² = 86.342, QM = 5.158					
8	Intercept	-2.632	0.494	-3.600 to -1.664	-5.329	<0.001
	Chronic liver disease	-1.965	11.525	-24.553 to 21.623	-0.170	0.865
	k = 15, $\tau^2 = 1.332$, I ² = 84.529, QM = 0.029					
9	Intercept	-2.850	0.463	-3.757 to -1.944	-6.161	<0.001
	Chronic kidney disease	11.613	8.335	-4.722 to 27.949	1.393	0.163
	k = 15, $\tau^2 = 1.185$, I ² = 84.105, QM = 1.942					
10	Intercept	-2.718	0.428	-3.556 to -1.886	-6.355	<0.001
	Malignancy	20.308	9.919	0.866 to 39.752	2.047	0.041
	k = 16, $\tau^2 = 0.497$, I ² = 75.460, QM = 4.191					
11	Intercept	-2.140	0.468	-3.057 to -1.223	-4.573	<0.001
	COPD	-3.422	14.786	-32.402 to 25.557	-0.231	0.817
	k = 11, $\tau^2 = 1.028$, I ² = 89.416, QM = 0.054					

Presenting symptoms						
12	Intercept	-3.186	1.049	-5.243 to -1.129	-3.036	0.002
	Asymptomatic	-9.113	12.896	-34.389 to 16.162	-0.707	0.480
	k = 9, $\tau_2 = 4.359$, I2 = 90.352, QM = 0.499					
13	Intercept	-10.098	3.624	-17.201 to -2.995	-2.786	0.005
	Fever	8.525	4.236	0.224 to 16.827	2.013	0.044
	k = 20, $\tau_2 = 1.946$, I2 = 89.018, QM = 4.051					
14	Intercept	-4.429	1.361	-7.096 to -1.762	-3.255	0.001
	Cough	2.421	2.119	-1.732 to 6.574	1.142	0.253
	k = 21, $\tau_2 = 2.096$, I2 = 90.704, QM = 1.305					
15	Intercept	-2.901	0.617	-4.110 to -1.693	-4.706	<0.001
	Sore throat	-0.011	2.573	-5.054 to 5.733	-0.004	0.997
	k = 14, $\tau_2 = 1.552$, I2 = 87.761, QM = 0.000					
16	Intercept	-6.493	3.574	-13.498 to 6.513	-1.816	0.069
	Tachypnea	4.139	6.653	-8.901 to 17.179	0.622	0.534
	k = 7, $\tau_2 = 9.745$, I2 = 92.103, QM = 0.387					
17	Intercept	-3.919	0.701	-5.293 to -2.546	-5.592	<0.001
	Dyspnea	5.263	2.589	0.187 to 19.339	2.033	0.042
	k = 17, $\tau_2 = 1.935$, I2 = 90.510, QM = 4.131					
18	Intercept	-2.954	0.729	-4.382 to -1.526	-4.055	<0.001
	Myalgia	2.311	2.833	-3.241 to 7.864	0.816	0.415
	k = 13, $\tau_2 = 1.128$, I2 = 82.759, QM = 0.666					
19	Intercept	-5.730	1.452	-8.575 to -2.884	-3.947	<0.001
	Fatigue	6.841	3.255	0.462 to 13.221	2.102	0.036
	k = 9, $\tau_2 = 1.883$, I2 = 75.036, QM = 4.418					
20	Intercept	-2.093	0.707	-3.478 to -4.718	-2.962	0.003
	Headache	-7.333	6.010	-19.113 to 4.446	-1.220	0.222
	k = 15, $\tau_2 = 1.972$, I2 = 92.662, QM = 1.489					
21	Intercept	-3.018	0.673	-4.337 to -1.699	-4.485	<0.001
	Diarrhea	4.228	5.997	-7.525 to 15.981	0.705	0.481
	k = 18, $\tau_2 = 1.279$, I2 = 86.591, QM = 0.497					
Laboratory investigations ‡						
22	Intercept	-728.908	26694.139	-53048.459 to 51594.644	-0.027	0.978
	Nucleic acid test positive	725.702	26694.139	-51593.849 to 53945.253	0.027	0.978
	k = 18, $\tau_2 = 2.861$, I2 = 94.023, QM = 0.001					
23	Intercept	-2.923	0.688	-4.272 to -1.575	-4.249	<0.001
	Leukopenia	-0.149	1.679	-3.440 to 3.141	-0.089	0.929
	k = 15, $\tau_2 = 1.763$, I2 = 87.768, QM = 0.008					
24	Intercept	-3.734	0.742	-5.189 to -2.279	-5.030	<0.001
	Leukocytosis	6.462	4.651	-2.655 to 15.578	1.389	0.165
	k = 15, $\tau_2 = 1.617$, I2 = 83.727, QM = 1.930					

25	Intercept	-3.319	0.906	-5.095 to -1.543	-3.663	<0.001
	Thrombocytopenia	4.623	3.915	-3.049 to 12.296	1.181	0.238
	k = 8, τ_2 = 1.198, I2 = 85.576, QM = 1.395					
26	Intercept	-4.303	0.979	-6.222 to -2.383	-4.393	<0.001
	Lymphopenia	3.533	1.996	-0.378 to 7.444	1.770	0.077
	k = 15, τ_2 = 1.264, I2 = 81.627, QM = 3.134					
27	Intercept	-3.882	0.707	-5.267 to -2.496	-5.491	<0.001
	High LDH	3.392	1.137	1.164 to 5.621	2.984	0.003
	k = 8, τ_2 = 0.315, I2 = 51.385, QM = 8.904					
28	Intercept	-2.131	0.308	-2.735 to -1.527	-6.914	<0.001
	Low Albumin	0.994	0.517	-0.019 to 2.318	1.923	0.055
	k = 5, τ_2 = 0.081, I2 = 27.279, QM = 3.697					
29	Intercept	-6.561	1.654	-9.803 to -3.319	-3.967	<0.001
	High CRP	5.696	2.155	1.471 to 9.921	2.642	0.008
	k = 14, τ_2 = 0.741, I2 = 74.102, QM = 6.983					
30	Intercept	-2.584	0.805	-4.161 to -1.936	-3.209	0.001
	High procalcitonin	-6.018	4.132	-14.116 to 2.081	-1.456	0.145
	k = 10, τ_2 = 2.030, I2 = 78.770, QM = 2.121					
31	Intercept	-3.367	0.736	-4.808 to -1.925	-4.577	<0.001
	High D-dimer	6.185	2.671	0.950 to 11.421	2.315	0.021
	k = 5, τ_2 = 0.221, I2 = 39.400, QM = 5.361					
Radiological features on CT thorax						
32	Intercept	-2.481	0.621	-3.698 to -1.265	-3.998	<0.001
	No lesions on CT	-6.518	3.726	-13.821 to 2.786	-1.749	0.080
	k = 14, τ_2 = 1.473, I2 = 79.098, QM = 3.059					
33	Intercept	-2.430	1.574	-5.514 to 9.656	-1.544	0.123
	Patchy consolidations	-2.949	3.633	-10.070 to 4.171	-0.812	0.417
	k = 10, τ_2 = 2.026, I2 = 77.274, QM = 0.659					
34	Intercept	-1.955	0.893	-3.705 to -6.204	-2.188	0.029
	Ground glass opacities	-1.912	1.387	-4.630 to 8.856	-1.379	0.168
	k = 14, τ_2 = 1.354, I2 = 81.205, QM = 1.901					
35	Intercept	-5.393	3.288	-11.838 to 1.452	-1.640	0.101
	Peripheral distribution	1.619	3.529	-5.297 to 8.536	0.459	0.646
	k = 5, τ_2 = 0.617, I2 = 32.942, QM = 0.211					
36	Intercept	-4.371	1.735	-7.772 to -1.978	-2.519	0.012
	Bilateral or ≥ 3 lobe involvement	1.857	2.445	-2.935 to 6.657	0.759	0.448
	k = 12, τ_2 = 1.547, I2 = 84.184, QM = 0.577					

465 † Coefficients represent logit-transformed proportions; positive coefficients suggest increased risk and
466 negative coefficients suggest decreased risk.

467 ‡ Biochemical parameters have been interpreted as low / high based on reference ranges considered in
468 each study.

469

470

471

472

473

474

475

476

477

478

479

480

481

482

483

484 **Table S6:** Results of all univariate meta-regression analyses examining the moderator effects of
 485 the covariates on the case-fatality rate in COVID-19.

Model	Variable	Coefficient †	SE	95%CI	Z	p
Demographic variables						
1	Intercept	-13.847	2.681	-19.101 to -8.593	-5.165	<0.001
	Age	0.198	0.052	0.096 to 0.299	3.838	<0.001
	k = 25, $\tau^2 = 0.506$, I ² = 50.639, QM = 14.733					
2	Intercept	-3.250	0.553	-4.334 to -2.166	-5.874	<0.001
	Age ≤ 18 years	-39.307	18.722	-76.002 to -2.613	-2.100	0.036
	k = 20, $\tau^2 = 0.755$, I ² = 57.711, QM = 4.408					
3	Intercept	-6.156	1.012	-8.140 to -4.172	-6.081	<0.001
	Age ≥ 60 years	7.499	2.949	1.720 to 13.278	2.543	0.011
	k = 14, $\tau^2 = 0.731$, I ² = 44.403, QM = 6.468					
4	Intercept	-4.422	1.938	-8.221 to -3.623	-2.281	0.023
	Female	-0.868	3.930	-8.570 to 6.834	-0.221	0.825
	k = 25, $\tau^2 = 2.986$, I ² = 84.794, QM = 0.049					
Past medical history						
5	Intercept	-3.966	0.865	-5.660 to -2.271	-4.587	<0.001
	DM-2	-4.139	4.769	-13.485 to 5.257	-0.868	0.385
	k = 19, $\tau^2 = 2.493$, I ² = 85.131, QM = 0.754					
6	Intercept	-4.843	0.937	-6.680 to -3.396	-5.167	<0.001
	Hypertension	6.070	3.098	-0.002 to 12.143	1.959	0.050
	k = 17, $\tau^2 = 0.818$, I ² = 62.909, QM = 3.839					
7	Intercept	-5.658	1.528	-8.653 to -2.663	-3.703	<0.001
	Cardiac disease	6.298	5.635	-4.746 to 17.343	1.118	0.264
	k = 16, $\tau^2 = 3.590$, I ² = 87.325, QM = 1.249					
8	Intercept	-5.096	1.329	-7.701 to -2.491	-3.833	<0.001
	Chronic liver disease	2.410	21.686	-40.093 to 44.913	0.111	0.912
	k = 17, $\tau^2 = 3.515$, I ² = 84.824, QM = 0.012					
9	Intercept	-4.976	1.169	-7.267 to -2.685	-4.256	<0.001
	Chronic kidney disease	-4.095	24.503	-52.120 to 43.938	-0.167	0.867
	k = 17, $\tau^2 = 3.415$, I ² = 85.031, QM = 0.028					
10	Intercept	-5.202	1.169	-7.492 to -2.912	-4.452	<0.001
	Malignancy	25.193	22.794	-19.482 to 69.869	1.105	0.269
	k = 18, $\tau^2 = 2.874$, I ² = 86.440, QM = 1.222					
11	Intercept	-4.718	1.206	-7.081 to -2.355	-3.913	<0.001
	COPD	11.975	37.673	-61.863 to 85.813	0.318	0.751
	k = 10, $\tau^2 = 3.332$, I ² = 90.202, QM = 0.101					

Presenting symptoms						
12	Intercept	-3.582	0.815	-5.179 to -1.985	-4.397	<0.001
	Asymptomatic	-22.825	23.869	-69.607 to 23.957	-0.956	0.339
	k = 10, $\tau^2 = 0.832$, I ² = 53.265, QM = 0.914					
13	Intercept	-16.665	6.768	-29.930 to -3.401	-2.462	0.014
	Fever	13.979	7.552	-0.823 to 28.781	1.851	0.064
	k = 21, $\tau^2 = 2.575$, I ² = 81.750, QM = 3.426					
14	Intercept	-4.380	1.630	-7.574 to -1.186	-2.688	0.007
	Cough	-0.590	2.693	-5.867 to 4.688	-0.219	0.827
	k = 22, $\tau^2 = 2.526$, I ² = 79.906, QM = 0.048					
15	Intercept	-4.031	1.764	-7.488 to -9.574	-2.285	0.022
	Sore throat	-12.722	13.745	-39.662 to 14.219	-0.926	0.355
	k = 14, $\tau^2 = 3.976$, I ² = 82.831, QM = 0.857					
16	Intercept	-4.512	1.018	-6.507 to -2.518	-4.434	<0.001
	Tachypnea	3.019	2.240	-1.371 to 7.419	1.348	0.178
	k = 6, $\tau^2 = 0.000$, I ² = 0.000, QM = 1.816					
17	Intercept	-5.384	0.963	-7.272 to -3.497	-5.592	<0.001
	Dyspnea	5.208	2.959	-0.592 to 11.528	1.760	0.078
	k = 17, $\tau^2 = 1.833$, I ² = 78.737, QM = 3.097					
18	Intercept	-5.809	1.825	-9.386 to -2.232	-3.183	0.001
	Myalgia	3.859	5.323	-6.575 to 14.292	0.725	0.469
	k = 13, $\tau^2 = 3.173$, I ² = 78.683, QM = 0.525					
19	Intercept	-4.991	0.697	-6.357 to -3.625	-7.162	<0.001
	Fatigue	2.601	1.314	0.025 to 5.178	1.979	0.048
	k = 10, $\tau^2 = 0.000$, I ² = 0.000, QM = 3.917					
20	Intercept	-3.100	0.975	-5.010 to -1.189	-3.180	0.001
	Headache	-13.603	10.138	-33.474 to 6.268	-1.342	0.180
	k = 15, $\tau^2 = 2.078$, I ² = 83.381, QM = 1.800					
21	Intercept	-5.158	1.600	-8.294 to -2.223	-3.224	0.001
	Diarrhea	0.674	12.728	-24.272 to 25.629	0.053	0.958
	k = 18, $\tau^2 = 4.168$, I ² = 87.268, QM = 0.003					
Laboratory investigations ‡						
22	Intercept	-277.080	203424.495	-398981.762 to 398427.693	-0.001	0.999
	Nucleic acid test positive	272.246	203424.495	-398432.438 to 398976.929	0.001	0.999
	k = 18, $\tau^2 = 2.967$, I ² = 85.532, QM = 0.000					
23	Intercept	-5.304	2.008	-9.239 to -1.369	-2.642	0.008
	Leukopenia	-2.851	4.864	-12.385 to 6.682	-0.586	0.558
	k = 14, $\tau^2 = 7.059$, I ² = 89.937, QM = 0.344					
24	Intercept	-7.326	1.868	-10.987 to -3.665	-3.922	<0.001
	Leukocytosis	20.497	7.588	5.624 to 35.369	2.701	0.007
	k = 14, $\tau^2 = 0.790$, I ² = 55.410, QM = 7.296					

25	Intercept	-5.628	2.680	-10.880 to -3.375	-2.100	0.036
	Thrombocytopenia	-2.645	12.249	-26.652 to 21.362	-0.216	0.829
	k = 8, $\tau^2 = 7.292$, I ² = 89.313, QM = 0.047					
26	Intercept	-10.089	4.017	-17.961 to -2.216	-2.512	0.012
	Lymphopenia	8.553	6.098	-3.398 to 24.574	1.403	0.161
	k = 15, $\tau^2 = 6.297$, I ² = 87.338, QM = 1.967					
27	Intercept	-9.907	3.336	-16.444 to -3.369	-2.970	0.003
	High LDH	8.923	4.123	0.842 to 17.604	2.164	0.030
	k = 9, $\tau^2 = 0.938$, I ² = 46.607, QM = 4.684					
28	Intercept	-6.740	1.325	-9.336 to -4.143	-5.088	<0.001
	Low Albumin	4.782	1.433	1.973 to 7.591	3.337	<0.001
	k = 6, $\tau^2 = 0.000$, I ² = 0.000, QM = 11.136					
29	Intercept	-22.970	10.385	-43.324 to -2.616	-2.212	0.027
	High CRP	23.196	11.885	-0.097 to 46.499	1.952	0.051
	k = 15, $\tau^2 = 1.120$, I ² = 63.919, QM = 3.809					
30	Intercept	-6.882	4.270	-15.250 to 1.486	-1.612	0.107
	High procalcitonin	-12.881	22.821	-57.609 to 31.847	-0.564	0.572
	k = 10, $\tau^2 = 11.734$, I ² = 89.835, QM = 0.319					
Radiological features on CT thorax						
32	Intercept	-2.321	0.316	-2.939 to -1.791	-7.344	<0.001
	No lesions on CT	-1941.342	3948.493	-9680.245 to 5797.561	-0.492	0.623
	k = 13, $\tau^2 = 0.000$, I ² = 0.000, QM = 0.242					
33	Intercept	-4.454	2.631	-9.609 to 2.702	-1.693	0.090
	Patchy consolidations	-1.290	5.246	-11.572 to 8.992	-0.246	0.806
	k = 9, $\tau^2 = 2.859$, I ² = 72.114, QM = 0.060					
34	Intercept	-1.341	1.554	-4.387 to 1.746	-0.863	0.388
	Ground glass opacities	-8.374	5.039	-18.250 to 1.552	-1.662	0.097
	k = 13, $\tau^2 = 2.225$, I ² = 77.488, QM = 2.762					
35	Intercept	-9.953	4.723	-19.210 to -2.695	-2.107	0.035
	Bilateral or ≥ 3 lobe involvement	7.011	6.069	-4.883 to 18.956	1.155	0.248
	k = 12, $\tau^2 = 3.840$, I ² = 86.622, QM = 1.335					

486

487 † Coefficients represent logit-transformed proportions; positive coefficients suggest increased risk and
 488 negative coefficients suggest decreased risk.

489 ‡ Biochemical parameters have been interpreted as low / high based on reference ranges considered in
 490 each study.

491 **References of Appendix**

- 492 1 Cai J, Xu J, Lin D, Yang Z, Xu L, Qu Z, *et al.* A Case Series of children with 2019 novel
493 coronavirus infection: clinical and epidemiological features. *Clin Infect Dis.* 2020.
- 494 2 Chen C, Yan JT, Zhou N, Zhao JP, Wang DW. [Analysis of myocardial injury in patients
495 with COVID-19 and association between concomitant cardiovascular diseases and severity of
496 COVID-19]. *Zhonghua Xin Xue Guan Bing Za Zhi.* 2020; 48: E008.
- 497 3 Chen H, Guo J, Wang C, Luo F, Yu X, Zhang W, *et al.* Clinical characteristics and
498 intrauterine vertical transmission potential of COVID-19 infection in nine pregnant women: a
499 retrospective review of medical records. *Lancet.* 2020; 395: 809-15.
- 500 4 Chen L, Liu HG, Liu W, Liu J, Liu K, Shang J, *et al.* [Analysis of clinical features of 29
501 patients with 2019 novel coronavirus pneumonia]. *Zhonghua Jie He He Hu Xi Za Zhi.* 2020; 43:
502 E005.
- 503 5 Chen N, Zhou M, Dong X, Qu J, Gong F, Han Y, *et al.* Epidemiological and clinical
504 characteristics of 99 cases of 2019 novel coronavirus pneumonia in Wuhan, China: a descriptive
505 study. *Lancet.* 2020; 395: 507-13.
- 506 6 Chen W, Lan Y, Yuan X, Deng X, Li Y, Cai X, *et al.* Detectable 2019-nCoV viral RNA
507 in blood is a strong indicator for the further clinical severity. *Emerg Microbes Infect.* 2020; 9:
508 469-73.
- 509 7 Li K, Wu J, Wu F, Guo D, Chen L, Fang Z, *et al.* The Clinical and Chest CT Features
510 Associated with Severe and Critical COVID-19 Pneumonia. *Invest Radiol.* 2020.
- 511 8 Li YY, Wang WN, Lei Y, Zhang B, Yang J, Hu JW, *et al.* [Comparison of the clinical
512 characteristics between RNA positive and negative patients clinically diagnosed with 2019 novel
513 coronavirus pneumonia]. *Zhonghua Jie He He Hu Xi Za Zhi.* 2020; 43: E023.

- 514 9 Liu C, Jiang ZC, Shao CX, Zhang HG, Yue HM, Chen ZH, *et al.* [Preliminary study of
515 the relationship between novel coronavirus pneumonia and liver function damage: a multicenter
516 study]. *Zhonghua Gan Zang Bing Za Zhi.* 2020; 28: 148-52.
- 517 10 Liu K, Fang YY, Deng Y, Liu W, Wang MF, Ma JP, *et al.* Clinical characteristics of
518 novel coronavirus cases in tertiary hospitals in Hubei Province. *Chin Med J (Engl).* 2020.
- 519 11 Liu W, Tao ZW, Lei W, Ming-Li Y, Kui L, Ling Z, *et al.* Analysis of factors associated
520 with disease outcomes in hospitalized patients with 2019 novel coronavirus disease. *Chin Med J*
521 *(Engl).* 2020.
- 522 12 Liu Y, Yang Y, Zhang C, Huang F, Wang F, Yuan J, *et al.* Clinical and biochemical
523 indexes from 2019-nCoV infected patients linked to viral loads and lung injury. *Sci China Life*
524 *Sci.* 2020; 63: 364-74.
- 525 13 Tian S, Hu N, Lou J, Chen K, Kang X, Xiang Z, *et al.* Characteristics of COVID-19
526 infection in Beijing. *J Infect.* 2020.
- 527 14 Wang D, Ju XL, Xie F, Lu Y, Li FY, Huang HH, *et al.* [Clinical analysis of 31 cases of
528 2019 novel coronavirus infection in children from six provinces (autonomous region) of northern
529 China]. *Zhonghua Er Ke Za Zhi.* 2020; 58: E011.
- 530 15 Wang D, Hu B, Hu C, Zhu F, Liu X, Zhang J, *et al.* Clinical Characteristics of 138
531 Hospitalized Patients With 2019 Novel Coronavirus-Infected Pneumonia in Wuhan, China.
532 *JAMA.* 2020.
- 533 16 Wang L, Gao YH, Lou LL, Zhang GJ. The clinical dynamics of 18 cases of COVID-19
534 outside of Wuhan, China. *Eur Respir J.* 2020.
- 535 17 Wu J, Liu J, Zhao X, Liu C, Wang W, Wang D, *et al.* Clinical Characteristics of Imported
536 Cases of COVID-19 in Jiangsu Province: A Multicenter Descriptive Study. *Clin Infect Dis.* 2020.

- 537 18 Wu WS, Li YG, Wei ZF, Zhou PH, Lyu LK, Zhang GP, *et al.* [Investigation and analysis
538 on characteristics of a cluster of COVID-19 associated with exposure in a department store in
539 Tianjin]. *Zhonghua Liu Xing Bing Xue Za Zhi.* 2020; 41: 489-93.
- 540 19 Xia W, Shao J, Guo Y, Peng X, Li Z, Hu D. Clinical and CT features in pediatric patients
541 with COVID-19 infection: Different points from adults. *Pediatr Pulmonol.* 2020.
- 542 20 Xu XW, Wu XX, Jiang XG, Xu KJ, Ying LJ, Ma CL, *et al.* Clinical findings in a group
543 of patients infected with the 2019 novel coronavirus (SARS-Cov-2) outside of Wuhan, China:
544 retrospective case series. *BMJ.* 2020; 368: m606.
- 545 21 Xu YH, Dong JH, An WM, Lv XY, Yin XP, Zhang JZ, *et al.* Clinical and computed
546 tomographic imaging features of novel coronavirus pneumonia caused by SARS-CoV-2. *J Infect.*
547 2020.
- 548 22 Yang X, Yu Y, Xu J, Shu H, Xia J, Liu H, *et al.* Clinical course and outcomes of
549 critically ill patients with SARS-CoV-2 pneumonia in Wuhan, China: a single-centered,
550 retrospective, observational study. *Lancet Respir Med.* 2020.
- 551 23 Yao Y, Tian Y, Zhou J, Ma X, Yang M, Wang S. Epidemiological characteristics of
552 2019-nCoV infections in Shaanxi, China by February 8, 2020. *Eur Respir J.* 2020.
- 553 24 Young BE, Ong SWX, Kalimuddin S, Low JG, Tan SY, Loh J, *et al.* Epidemiologic
554 Features and Clinical Course of Patients Infected With SARS-CoV-2 in Singapore. *JAMA.* 2020.
- 555 25 Zhang JJ, Dong X, Cao YY, Yuan YD, Yang YB, Yan YQ, *et al.* Clinical characteristics
556 of 140 patients infected with SARS-CoV-2 in Wuhan, China. *Allergy.* 2020.
- 557 26 Zhang MQ, Wang XH, Chen YL, Zhao KL, Cai YQ, An CL, *et al.* [Clinical features of
558 2019 novel coronavirus pneumonia in the early stage from a fever clinic in Beijing]. *Zhonghua*
559 *Jie He He Hu Xi Za Zhi.* 2020; 43: E013.

45

560 27 Zhao W, Zhong Z, Xie X, Yu Q, Liu J. Relation Between Chest CT Findings and Clinical
561 Conditions of Coronavirus Disease (COVID-19) Pneumonia: A Multicenter Study. *AJR Am J*
562 *Roentgenol.* 2020: 1-6.

563 28 Zhu ZW, Tang JJ, Chai XP, Fang ZF, Liu QM, Hu XQ, *et al.* [Comparison of heart
564 failure and 2019 novel coronavirus pneumonia in chest CT features and clinical characteristics].
565 *Zhonghua Xin Xue Guan Bing Za Zhi.* 2020; 48: E007.

566

567