

1                   **Genetic risk scores of disease and mortality capture**  
2                   **differences in longevity, economic behavior, and insurance**  
3                   **outcomes**

4  
5  
6                   Authors: Richard Karlsson Linnér<sup>1</sup> & Philipp D. Koellinger<sup>1</sup>

7                   1 School of Business and Economics, Vrije Universiteit Amsterdam,  
8                   De Boelelaan 1105, 1081HV Amsterdam, The Netherlands

9                   Email: [r.karlssonlinner@vu.nl](mailto:r.karlssonlinner@vu.nl) & [p.d.koellinger@vu.nl](mailto:p.d.koellinger@vu.nl)

**NOTE: This preprint reports new research that has not been certified by peer review and should not be used to guide clinical practice.**

1                   **Genetic risk scores of disease and mortality capture**  
2                   **differences in longevity, economic behavior, and insurance**  
3                   **outcomes**

4  
5   **Abstract:**

6   Widespread genetic testing for diseases may cause adverse selection, escalating premiums, or  
7   discrimination in various insurance markets. Here, without systematically informing study  
8   participants of their genetic predisposition, we estimate to what extent genetic data are  
9   informative about differences in longevity, health expectations, and economic behavior. We  
10   compute measures of genetic liability (polygenic scores) for 27 common diseases and mortality  
11   risks in 9,272 participants of the Health and Retirement Study (HRS). Survival analysis  
12   suggests that the highest decile of cumulative genetic risk can distinguish a median lifespan up  
13   to 4.5 years shorter, a difference that is similar to or larger than that distinguished by  
14   conventional actuarial risk factors, including sex. Furthermore, greater genetic liability is  
15   associated with less long-term care insurance, among other economic behaviors. We conclude  
16   that the rapid developments in genetic epidemiology pose new challenges for regulating  
17   consumer genetics and insurance markets, requiring urgent attention from policymakers.

# 1 Introduction

2 The precision of genetic tests for common diseases is rapidly increasing. While the prognostic  
3 accuracy of these tests is still limited, it will become substantial in the near future (Zeggini et  
4 al. 2019). Recent studies find that cumulative measures of genetic liability, which are called  
5 *polygenic scores*, are comparable in precision to other, established clinical risk factors  
6 (Abraham et al. 2019; Khera et al. 2019; Torkamani, Wineinger, and Topol 2018). Polygenic  
7 scores have quickly become a routine component of genetic health reports offered by  
8 companies in the exponentially growing market of consumer genetics, with several millions of  
9 customers worldwide (Khan and Mittelman 2018). Many customers report a strong motivation  
10 to explore their DNA for health information (Nelson, Bowen, and Fullerton 2019; Wang et al.  
11 2018). Thus, genetic testing is becoming an affordable and widely advertised service, and  
12 people can now purchase more or less noisy estimates of their genetic liability early in life,  
13 many years before any signs or symptoms of disease emerge (Khera et al. 2019). This study  
14 estimates to what extent polygenic scores for a range of common diseases and mortality risks  
15 from various medical domains can capture differences in longevity, subjective life expectancy,  
16 self-rated health, and insurance purchases, and we discuss the implications of our findings.

17 In summary, we generated polygenic scores for 13 common medical conditions related to  
18 mortality (including Alzheimer’s disease, atrial fibrillation, and type 2 diabetes) and 14  
19 mortality risk factors (including blood pressure, cholesterol, and smoking) by leveraging  
20 results from the largest genetic studies thus far made publicly available to the research  
21 community. In a series of survival analyses in 9,272 Health and Retirement Study (HRS)  
22 respondents, we found that the polygenic scores in combination could distinguish a median  
23 lifespan up to 4.4 years shorter and a median lifespan at least 2.4 years shorter in an extensively  
24 adjusted model that controlled for various lifestyle factors, diagnosed medical conditions, and  
25 socioeconomic variables.

26 Furthermore, while neither the organizers of the HRS nor the authors returned any information  
27 to the respondents about their genetic predisposition, the polygenic scores were found to be  
28 associated with subjective life expectancy and self-rated health. This finding suggests that the  
29 unobserved genetic risks had actually been partly observed by the respondents, likely through  
30 their health or acquired medical conditions. Finally, greater genetic liability was found to be  
31 associated with several economic behaviors and measures, including 2.2 months shorter long-  
32 term care insurance coverage, but not with life insurance coverage.

## 1 **1.1 Genetic testing, economic behavior, and insurance**

2 The revelation of genetic risks may influence people's expectations about their future health  
3 and longevity and, in turn, influence their economic behavior (Hamermesh 1985). The expected  
4 value of any kind of insurance tied to the health, life, or death of a person should theoretically  
5 be affected by knowledge of genetic risks, as should the rationale for purchasing coverage  
6 (Rothstein 2004; Peter, Richter, and Thistle 2017; Oster et al. 2010). If an applicant has private  
7 knowledge of risks that are not reflected in the premium (or benefit), then a particular insurance  
8 product will be considered either cheap or expensive (that is, actuarially unfair) depending on  
9 whether the benefit is paid specifically upon the death, survival, or illness of the insured. Thus,  
10 depending on the insurance product in question, it could be considered in the financial interest  
11 of an applicant to either withhold or reveal private knowledge of genetic risks when applying  
12 for insurance.

13 Only a handful of studies have empirically tested whether the decision to purchase insurance  
14 can be influenced by giving people novel information about a few of their genetic risk factors  
15 (Zick et al. 2000; Aktan-Collan, Haukkala, and Kääriäinen 2001; Armstrong et al. 2003; Zick  
16 et al. 2005; Taylor et al. 2010; Oster et al. 2010). While the results are mixed, some studies did  
17 indeed find that the willingness to purchase coverage increased among people who received a  
18 test result that indicated greater genetic risk, but this was true only for certain types of  
19 insurance. However, these studies were limited by their examination of self-reported rather  
20 than revealed preferences, their use of small sample sizes, their narrow focus on a few genetic  
21 variants or diseases, or the very limited insights into the role of genetics for common diseases  
22 that were available prior to 2010 (Visscher et al. 2017; Mills and Rahal 2019). Furthermore, it  
23 appears that the public's genetic literacy is weak, even among the highly educated (Gericke et  
24 al. 2017; Chapman et al. 2019; Carver et al. 2017). Therefore, it is also conceivable that  
25 disregard for or misinterpretation of genetic test results leads to no behavioral changes at all  
26 or, alternatively, leads to changes that could be considered unexpected or inappropriate (Wang  
27 et al. 2018; Tandy-Connor et al. 2018; Nelson, Bowen, and Fullerton 2019; Lea et al. 2011).  
28 Thus, it remains an interesting and relevant empirical question to what extent health  
29 expectations and economic decisions, such as insurance purchases, are related to or influenced  
30 by the increasing availability of genetic information.

31 Representatives of various insurance providers have expressed concerns about the viability of  
32 different insurance products in a time of widespread genetic testing (Nabholz and Rechfeld  
33 2017; Rechfeld et al. 2019; Hodgson and Haddow 2016). Their main worry is a situation in

1 which insurance applicants with private knowledge of genetic risks would be sanctioned to  
2 withhold that information from underwriting (Rothstein 2004; Peter, Richter, and Thistle  
3 2017). Theoretical analyses suggest that a ban on using genetic information for underwriting  
4 is Pareto suboptimal compared to alternative regulatory regimes of partial or full disclosure  
5 (Peter, Richter, and Thistle 2017). In addition, experts and stakeholders agree that sanctioned  
6 non-disclosure threatens the fundamental insurance principles of symmetric information and  
7 actuarial fairness, which can lead to adverse selection and escalating premiums (Harper 1993;  
8 Rothstein 2004; Nabholz and Somerville 2011). On the other hand, however, the danger of  
9 genetic discrimination could emerge if insurers were given access to genetic data, which could  
10 lead them to deny health care or financial support precisely to those individuals who need it  
11 most (Tiller et al. 2019; Newson et al. 2018). In some countries, there are reports of active  
12 genetic discrimination for some conditions (Joly, Ngueng Feze, and Simard 2013; Tiller et al.  
13 2019).

14 Because of the real risk of genetic discrimination, many governments have taken a regulatory  
15 stance that favors consumer privacy over corporate interests by mostly limiting the rights of  
16 insurance providers to request and use genetic information to reject applications or determine  
17 premiums (Borry et al., 2012; Prince, 2019; Sijbrands et al., 2009). In countries that lack  
18 regulation, the insurance industry has frequently chosen to self-regulate with voluntary  
19 moratoriums. Over time, these developments could threaten the affordability and viability of  
20 several private insurance markets (Strohmenger and Wambach 2000; Hendren 2013), or in  
21 jurisdictions where insurance providers may request access to genetic data, providers could  
22 increase health or financial inequalities by discriminating on risk factors that are due to bad  
23 luck in the “genetic lottery” (Newson et al. 2018; Rothstein 2004). Therefore, the question of  
24 whether genetic test results should be disclosed to insurance providers is an urgent and  
25 controversial topic of societal relevance (Newson et al. 2018; Klitzman, Appelbaum, and  
26 Chung 2014). Recently, an international expert group of researchers and insurance stakeholders  
27 called for more research on this topic (Joly et al. 2014).

28 In practice, not all observable risks can be underwritten. Reasons include the negligible  
29 influence of certain risks on mortality or a lack of data to accurately define a fair premium  
30 (Nabholz and Somerville 2011). Thus, the accuracy and predictive scope of this new type of  
31 genetic information needs to be determined before polygenic scores can even be considered for  
32 use in underwriting. To date, only a handful of studies have investigated to what extent  
33 polygenic scores can classify people into groups of different mortality risks (Ganna et al. 2013;

1 Marionni et al. 2016; Timmers et al. 2019; McDaid et al. 2017; Pilling et al. 2016; Joshi et al.  
2 2017). The largest effect reported thus far is a 3.5-year difference in the median lifespan; this  
3 result was found by comparing the top versus bottom deciles of a polygenic score for parental  
4 lifespan. (Parental lifespan is a common proxy for individual longevity that imperfectly  
5 captures various diseases and lifestyle risks, among other factors.) However, estimates are still  
6 scarce, and most have been obtained without conditioning on observable confounders such as  
7 income, smoking, or medical conditions. Therefore, the main objective of this study is to  
8 estimate in another sample how well polygenic scores for common medical conditions and  
9 mortality risks can distinguish a difference in lifespan across groups of cumulative genetic  
10 liability and, in this regard, benchmark polygenic scores to conventional actuarial risk factors.  
11 In addition, as it is essentially unknown how much information polygenic scores can add on  
12 top of observable risk factors, we also investigate an extensively adjusted regression model.  
13 Furthermore, we explore whether polygenic scores are associated with subjective life  
14 expectancy and self-rated health. Such an association may indicate whether the underlying  
15 genetic risks, which we assume are not directly observed by respondents, are nonetheless partly  
16 captured by these health measures. Finally, we investigate whether polygenic scores capture  
17 any differences in insurance purchases and other economically relevant variables in a situation  
18 where neither customers nor insurance providers have access to those data. We are aware of  
19 only a single recent study that tested for an association between polygenic scores for disease  
20 and economic behavior. Specifically, Shin, Lillard, and Bhattacharya (2019) tested whether a  
21 polygenic score for Alzheimer's disease was associated with wealth composition in the HRS,  
22 and they found that greater genetic risk was associated with less wealth.

## 23 **1.2 Genetic risks for common diseases**

24 Genetic factors contribute substantially to the risk of disease (Visscher et al. 2017; Polderman  
25 et al. 2015). In a given population, genes may account for more than 30% of the variation in  
26 longevity (Pilling et al. 2017; Brooks-Wilson 2013; Ganna et al. 2013; Timmers et al. 2019).  
27 Diagnostic genetic tests for severe but rare single-gene disorders have been routine in clinical  
28 care for decades, for which thousands of tests are available (Phillips et al. 2018; Godard et al.  
29 2003). However, most people are not affected by rare genetic disorders, and the contribution  
30 of these disorders to the mortality burden from noncommunicable diseases (NCDs) is limited,  
31 particularly in adults (Kaplan et al. 2013). Instead, a few common and substantially heritable  
32 medical conditions, such as cardiovascular disease (CVD), cancer, and diabetes, account for a

1 majority of all NCD deaths (Khera et al. 2018; Jan et al. 2018; Bloom et al. 2011; Dagenais et  
2 al. 2019). A few prevalent, heritable, and potentially preventable mortality risks, such as high  
3 cholesterol and smoking, also cause a considerable NCD burden (Daar et al. 2007; Jan et al.  
4 2018). Accordingly, the current study is restricted to medical conditions and mortality risks  
5 that are common in the population.

### 6 **1.2.1 Genome-wide association studies and polygenic scores**

7 Common medical conditions are rarely, if ever, caused exclusively by any single gene. Instead,  
8 they are *complex traits* that are influenced by a large number of genetic variants with  
9 individually minute effects on disease risk (Dudbridge 2016; Visscher et al. 2017; Khera et al.  
10 2018). This so-called *polygenicity* also applies to mortality risks and lifestyle factors (Willer et  
11 al. 2013; Karlsson Linnér et al. 2019; Dudbridge 2016). However, in combination, these small  
12 genetic effects sum up to the heritability of a trait, which accounts for ~20–60% of the variance  
13 in longevity and many common diseases (Polderman et al. 2015; Witte, Visscher, and Wray  
14 2014). In recent years, there has been rapid progress in the effort to identify genetic variants  
15 that contribute to complex traits. *Genome-wide association studies* (GWAS) are currently the  
16 method of choice for this purpose (Mills and Rahal 2019; Tam et al. 2019; Young et al. 2019).  
17 A typical GWAS tests millions of single-nucleotide polymorphisms (SNPs), one at a time, for  
18 association with a trait (Pasaniuc and Price 2017). SNPs refer to a base pair at a particular  
19 location in a genome that varies among people, which is the most common form of genetic  
20 variation that exists. It is now relatively cheap and easy to measure millions of SNPs across a  
21 genome (e.g., using DNA extracted from saliva samples, which is then genotyped using high-  
22 throughput array technologies). Many recent GWAS have been performed in hundreds of  
23 thousands of participants, a few have been performed in more than a million participants, and  
24 larger studies are expected in the near future (Saunders et al. 2019; Mills and Rahal 2019; Tam  
25 et al. 2019). For example, the most recent GWAS on longevity studied more than five hundred  
26 thousand people (Timmers et al. 2019). To date, the GWAS literature has successfully linked  
27 tens of thousands of SNPs with hundreds of common diseases, health risks, and lifestyle  
28 behaviors, with a respectable replication record (Mills and Rahal 2019; Buniello et al. 2018;  
29 Tam et al. 2019; Young et al. 2019).

30 Estimated GWAS coefficients can be used to construct polygenic scores in hold-out samples  
31 that were not included in the GWAS (Pasaniuc and Price 2017). In essence, polygenic scores  
32 are simple linear combinations of a person's genotype, weighed by each SNP's trait-specific

1 effect (Dudbridge 2013). These scores can have substantial predictive accuracy when the trait  
2 in question is heritable and the input SNP effects have been estimated in a well-powered  
3 GWAS (Torkamani and Topol 2019; Khera et al. 2018; Mavaddat et al. 2019). For example,  
4 recent studies show that polygenic scores can stratify a severalfold increased risk of disease, a  
5 capacity that is comparable to or better than that of clinical risk factors or monogenic mutations,  
6 such as those involved in familial hypercholesterolemia (Abraham et al. 2019; Khera et al.  
7 2018; Escott-Price et al. 2017). The utility of the method is even greater when polygenic scores  
8 are analyzed jointly or together with other observable factors, such as family or medical history  
9 (Krapohl et al. 2017). In the future, polygenic scores may even substitute for expensive  
10 biomarkers or complement observable risk factors measured with imprecision (Torkamani,  
11 Wineinger, and Topol 2018).

## 12 **2 Methods**

### 13 **2.1 Data**

14 The analyses reported here were performed according to a preregistered analysis plan<sup>a</sup>. We  
15 analyzed the HRS, a longitudinal household survey of elderly Americans that has been  
16 conducted biannually since 1992 (Sonnegg et al. 2014). The purpose of the HRS is to facilitate  
17 studies on how the socioeconomic environment is related to health and aging, for which study  
18 participants provide broad consent. Overall, there were 13 waves of data available, spanning  
19 the years 1992–2018. In 2006, the HRS also started collecting genotype data (Domingue et al.  
20 2017). We analyzed the publicly available HRS Longitudinal File 2016 (v1), curated by the  
21 RAND Corporation, together with restricted-access genetic data that are available upon request  
22 from the National Center for Biotechnology Information (NCBI) database of Genotypes and  
23 Phenotypes (dbGaP) (Mailman et al. 2007).

24 The HRS Longitudinal File contains rich demographic data from the family; health and  
25 medical; education, occupation, income and wealth; and retirement domains. We extensively  
26 searched and narrowed down a selection of approximately 30 variables that we considered  
27 important to include as covariates. Because of the unbalanced panel structure and many missing  
28 observations, we did not implement a panel data model. Instead, to vastly increase the sample  
29 size, we collapsed the panel structure into a cross-section in the following way: binary, ordinal,  
30 and categorical variables were assigned the most frequently occurring value across the waves,

---

<sup>a</sup> The analysis plan is available at <https://osf.io/qzx6p/>



1 and continuous variables were assigned the median. All dollar values were converted to 2016  
2 prices. We report the full set of variables and sample descriptive statistics in **Table 1**.

### 3 **2.1.1 Respondent inclusion criteria**

4 We restricted all analyses to respondents who self-reported that they categorize as both  
5 “White/Caucasian” and “Not Hispanic”, which we hereafter refer to as European ancestry<sup>b</sup>.  
6 The reason for this inclusion criterion is that the vast majority of GWAS have been performed  
7 in individuals of this descent, which drastically limits the possibility of constructing accurate  
8 polygenic scores in other ancestries (Duncan et al. 2019; Martin et al. 2017, 2019). In addition,  
9 in the HRS, this ancestral group is about three times larger than all the others combined. We  
10 analyzed the second release of the HRS genotype data, which had been imputed with the 1000  
11 Genomes Project phase 1 version 3 reference panel (Auton et al. 2015). The second release  
12 includes 15,620 genotyped respondents, out of whom 10,958 reported that they were of  
13 European ancestry.

14 Next, we generated genetic principal components (PCs) to identify genetic outliers (Price et al.  
15 2006, 2010). Specifically, we projected the European ancestry subsample of the 1000 Genomes  
16 phase 3 (version 5) reference panel onto the PCs and excluded respondents who had a value on  
17 any of the first four PCs that exceeded the range of the reference panel by more than 10%. In  
18 total, 10,701 individuals remained after this step. Thereafter, as is recommended (Price et al.  
19 2006), we re-estimated 10 genetic PCs in the more homogenous HRS subsample, which were  
20 later included as covariates to control for population stratification. Population stratification  
21 refers to incidental covariation between allele frequencies and the outcome of interest, which  
22 can induce bias if not adjusted for (Price et al. 2006; Hamer and Sirota 2000). To be extra  
23 cautious, we excluded respondents who were more than 5 standard deviations from the mean  
24 on any of the newly generated PCs. This procedure removed 105 additional outliers. In total,  
25 10,596 respondents remained at this stage. In summary, we proceeded conservatively to try to  
26 minimize the chance of bias, which can easily be introduced by ancestry admixture (Martin et  
27 al. 2017).

---

<sup>b</sup> In this study, we adhere to the definition of European ancestry that is standard in genetic epidemiology, which distinguishes “Hispanic/Latin American” (Mills and Rahal 2019).

### 1 **2.1.2 Mortality selection and restriction of birth years**

2 The HRS first started collecting genotype data in 2006, approximately 14 years after the first  
3 wave was collected. Thus, the genetic data could be subject to nonrandom selection based on  
4 mortality. In a thorough investigation of mortality selection in the HRS, Domingue et al. (2017)  
5 verified that the genotyped HRS respondents were indeed healthier, displayed fewer health-  
6 risk behaviors, and lived longer than the overall sample. We confirmed that there was mortality  
7 selection by comparing Kaplan-Meier survival functions (**Supplementary Figure 1**).  
8 Following recommendations given by Domingue et al., and with the aim to exclude birth years  
9 with fewer than a hundred observations with non-missing birth and death data, we restricted  
10 all further analyses to individuals born between 1920 and 1955. At this stage, we retained 9,272  
11 respondents, of whom 2,332 were deceased by the most recent wave. We hereafter refer to  
12 these 9,272 genotyped respondents as our “study sample”. Any remaining mortality selection  
13 would most likely lead to an underestimation of the influence of polygenic scores, particularly  
14 for mortality risks that manifest before old age and that could have contributed to mortality  
15 selection, such as cardiovascular disease (Yusuf et al. 2019).

**Table 1. Descriptive statistics**

Variable	Type	Wave	European HRS respondents		European HRS genotyped study sample	
			<i>N</i>	% Mean (SD), or range	<i>N</i>	% Mean (SD), or range
<b>Panel A. Demographics</b>						
<b>Sex</b>			27,345		9,272	
– Male	Categorical	1–13	12,256	44.82%	4,036	43.53%
– Female			15,089	55.18%	5,236	56.47%
<b>Birth year</b>	Categorical	1–13	27,345	1890–1995	9,272	1920–1955
<b>HRS birth cohort</b>			27,345		9,272	
– AHEAD, born before 1924			6,112	22.35%	531	5.73%
– the Children of Depression (CODA), born 1924–1930			3,403	12.44%	1,530	16.50%
– HRS, born 1931–1941			7,438	27.20%	3,695	39.85%
– War Babies (WB), born 1942–1947	Categorical	1–13	2,677	9.79%	1,527	16.47%
– Early Baby Boomers (EBB), born 1948–1953			2,666	9.75%	1,642	17.71%
– Mid Baby Boomers (MBB), born 1954–1959			2,583	9.45%	347	3.74%
– Late Baby Boomers, born 1960–1965			2,016	7.37%	0	0.00%
– Born after 1965			450	1.65%	0	0.00%
<b>Deceased by the last wave</b>			27,345		9,272	
– Yes	Binary	1–13	11,300	41.32%	2,332	25.15%
– No			16,045	58.68%	6,940	74.85%
<b>Deceased before genotype data collection (before 2006)</b>			27,345		9,272	
– Yes	Binary	1–13	5,940	21.72%	0	0.00%
– No			21,405	78.28%	9,272	100.00%
<b>Census region, 1992–2014</b>			25,507		9,272	
– Northeast			4,372	17.14%	1,477	15.93%
– Midwest	Categorical	1–13	6,957	27.27%	2,690	29.01%
– South			9,646	37.82%	3,400	36.67%
– West			4,532	17.77%	1,705	18.39%
<b>Years of schooling (17+ years coded as 17)</b>	Continuous	1–13	27,199	12.8 (2.8)	9,246	13.2 (2.5)
<b>Veteran status</b>			27,333		9,266	
– Yes	Binary	1–13	6,440	23.56%	2,354	25.40%
– No			20,893	76.44%	6,912	74.60%
<b>Married or partnered in any wave</b>			27,345		9,272	
– Yes	Binary	1–13	21,220	77.60%	8,042	86.73%
– No			6,125	22.40%	1,230	13.27%
<b>Divorced or separated in any wave</b>			27,345		9,272	
– Yes	Binary	1–13	3,705	13.55%	1,373	14.81%
– No			23,640	86.45%	7,899	85.19%
<b>Widowed in any wave</b>			27,345		9,272	
– Yes	Binary	1–13	7,890	28.85%	2,846	30.69%
– No			19,455	71.15%	6,426	69.31%
<b>Number of children</b>	Continuous	1–13	26,381	2.4 (1.7)	9,263	2.6 (1.6)
<b>Panel B. Health</b>						
<b>Body Mass Index (BMI)</b>	Continuous	1–13	27,284	27.1 (5.5)	9,268	27.7 (5.2)
<b>Subjective life expectancy</b>	Continuous	1–13	23,802	1.2 (1.8)	9,265	1.04 (0.8)
<b>Self-rated health</b>			27,341		9,272	
– 5. Poor			2,586	9.46%	410	4.42%
– 4. Fair	Categorical	1–13	4,834	17.68%	1,242	13.40%
– 3. Good			8,639	31.60%	3,044	32.83%
– 2. Very good			8,195	29.97%	3,439	37.09%
– 1. Excellent			3,087	11.29%	1,137	12.26%
<b>Alcoholic drinks per week</b>	Continuous	1–13	25,706	2.8 (6.4)	9,271	2.8 (5.5)
<b>Ever smoker</b>			27,345		9,272	
– Yes	Binary	1–13	16,111	58.92%	5,285	57.00%
– No			11,234	41.08%	3,987	43.00%
<b>Current smoker</b>			27,339		9,272	
– Yes	Binary	1–13	4,690	17.15%	1,233	13.30%
– No			22,649	82.85%	8,039	86.70%
<b>Ever diagnosed with high blood pressure (or hypertension)</b>			27,345		9,272	
– Yes	Binary	1–13	15,954	58.34%	6,193	66.79%
– No			11,391	41.66%	3,079	33.21%
<b>Ever diagnosed with diabetes (or high blood sugar)</b>			27,345		9,272	
– Yes	Binary	1–13	5,916	21.63%	2,365	25.51%
– No			21,429	78.37%	6,907	74.49%
<b>Ever diagnosed with cancer (or malignant tumor except skin cancer)</b>			27,345		9,272	
– Yes	Binary	1–13	5,786	21.16%	2,310	24.91%

– No			21,559	78.84%	6,962	75.09%
<b>Ever diagnosed with chronic lung disease (except asthma such as chronic bronchitis or emphysema)</b>	Binary	1–13	27,345		9,272	
– Yes			4,275	15.63%	1,522	16.42%
– No			23,070	84.37%	7,750	83.58%
<b>Ever diagnosed with heart conditions (such as heart attack, coronary heart disease, angina, congestive heart failure, or other heart problems)</b>	Binary	1–13	27,345		9,272	
– Yes			9,539	34.88%	3,548	38.27%
– No			17,806	65.12%	5,724	61.73%
<b>Ever diagnosed with stroke (or transient ischemic attack)</b>	Binary	1–13	27,345		9,272	
– Yes			3,944	14.42%	1,312	14.15%
– No			23,401	85.58%	7,960	85.85%
<b>Ever diagnosed with emotional, nervous, or psychiatric problems</b>	Binary	1–13	27,345		9,272	
– Yes			1,462	5.35%	352	3.80%
– No			25,883	94.65%	8,920	96.20%
<b>Ever diagnosed with arthritis (or rheumatism)</b>	Binary	1–13	27,345		9,272	
– Yes			16,576	60.62%	6,618	71.38%
– No			10,769	39.38%	2,654	28.62%
<b>Ever diagnosed with Alzheimer's disease</b>	Binary	1–13	27,345		9,272	
– Yes			496	1.81%	299	3.22%
– No			26,849	98.19%	8,973	96.78%
<b>Ever diagnosed with dementia</b>	Binary	1–13	27,345		9,272	
– Yes			786	2.87%	445	4.80%
– No			26,559	97.13%	8,827	95.20%
<b>Ever reported back problems</b>	Binary	1–13	27,345		9,272	
– Yes			15,939	58.29%	6,490	70.00%
– No			11,406	41.71%	2,782	30.00%
<b>Whether health limits work</b>	Binary	1–13	27,345		9,272	
– Yes			15,059	55.07%	6,091	65.69%
– No			12,286	44.93%	3,181	34.31%
<b>Self-reported probability of having a work limiting health problem in the next 10 years</b>	Continuous	1–6	9,984	40.2% (25.0%)	5,368	39.4% (23.9%)

Panel C. Occupation, income, wealth, and retirement

<b>Labor force status</b>			26,580		9,272	
– Works full-time			8,215	30.91%	2,696	29.08%
– Works part-time			1,259	4.74%	368	3.97%
– Unemployed			295	1.11%	37	0.40%
– Not in labor force	Categorical	1–13	2,084	7.84%	625	6.74%
– Retired			12,909	48.57%	4,971	53.61%
– Partly retired			1,249	4.70%	57	0.61%
– Disabled			569	2.14%	518	5.59%
<b>Household income in 2016 prices (in thousands of US\$)</b>	Continuous	1–13	27,345	82.6 (83.6)	9,272	76.8 (76.0)
<b>Total household wealth in 2016 prices (in thousands of US\$)</b>	Continuous	1–13	27,345	476.4 (1,299)	9,272	563.7 (957.0)
<b>Received Social Security (OASDI) in any wave</b>	Binary	1–13	27,345		9,272	
– Yes			20,005	73.16%	8,220	88.65%
– No			7,340	26.84%	1,052	11.35%
<b>Self-reported probability of working full-time after age 65</b>	Continuous	1–13	17,255	25.4% (31.9%)	7,195	22.6% (30.5%)
<b>Plans to continue paid work in retirement</b>	Binary	1	7,400		3,771	
– Yes			5,368	72.54%	2,761	73.22%
– No			2,032	27.46%	1,010	26.78%
<b>Concerned about having enough retirement income</b>	Categorical	1	6,275		3,331	
– 1. A lot			1,762	28.08%	868	26.06%
– 2. Somewhat			1,799	28.67%	982	29.48%
– 3. Little			1,518	24.19%	867	26.03%
– 4. Not at all			1,196	19.06%	614	18.43%
<b>Planned retirement age (i.e., planned retirement year minus birth year)</b>	Continuous	1–13	6,331	64.3 (5.3)	3,463	64.6 (5.3)
<b>Satisfied with retirement</b>	Categorical	1–13	15,868		7,484	
– 1. Very			8,680	54.70%	4,381	58.54%
– 2. Moderately			5,800	36.55%	2,664	35.60%
– 3. Not at all			1,388	8.75%	439	5.87%
<b>Expectation of total retirement wealth in 2016 prices (in thousands of US\$)</b>	Continuous	1	6,346	201.9 (571.4)	3,354	214.4 (580.3)
<b>Life-insurance coverage in any wave</b>	Binary	1–13	27,212		9,272	
– Yes			22,050	81.03%	8,330	89.84%
– No			5,162	18.97%	942	11.31%
<b>Percentage of waves covered by life insurance</b>	Continuous	1–13	27,212	65.4% (40.0%)	9,272	68.9% (35.9%)

<b>Long-term care insurance coverage in any wave</b>			27,165		9,272	
- Yes	Binary	1-13	6,561	24.15%	3,107	33.51%
- No			20,604	75.85%	6,165	66.49%
<b>Percentage of waves covered by long-term care insurance, 1992-2014</b>						
	Continuous	1-13	27,165	10.4% (23.4%)	9,272	13.4% (25.9%)
<b>Financial planning horizon</b>			21,905		9,196	
- 1. Next few months			3,245	14.81%	1,154	12.55%
- 2. Next year			2,433	11.11%	979	10.65%
- 3. Next few years	Categorical	1, 4-8, 11-13	6,463	29.50%	2,862	31.12%
- 4. Next 5-10 years			7,364	33.62%	3,293	35.81%
- 5. Longer than 10 years			2,400	10.96%	908	9.87%

1

## 1 **2.2 Statistical analyses**

### 2 **2.2.1 Quality control, heritability, and genetic correlations**

3 We performed an extensive search of the published GWAS literature to identify the largest  
4 studies on common medical conditions and mortality risks that have thus far been made  
5 publicly available to the research community. The search was performed in the National  
6 Human Genome Research Institute (NHGRI) GWAS Catalog, which curates all published  
7 genome-wide association studies (MacArthur et al. 2017; Buniello et al. 2018), in the March  
8 1, 2019, version of the database. To choose among the many hundreds of traits available in the  
9 database, we prespecified a selection that was guided by the medical literature. More  
10 specifically, we collected recognized predictors of mortality that had either been expert-curated  
11 by a panel of clinicians in a study by Ganna et al. (2013) or been determined to causally  
12 influence lifespan in a genetic study by McDaid et al. (2017). In addition, we prespecified the  
13 inclusion of only traits that had been studied in more than a hundred thousand people, since the  
14 accuracy of polygenic scores is a strong function of GWAS sample size (Daetwyler,  
15 Villanueva, and Woolliams 2008).

16 As reported in **Table 2**, we collected results from 29 GWAS (two were excluded see below)  
17 that spanned many medical domains, including cardiology, oncology, neurology, and  
18 psychiatry; in total 15 common medical conditions and the following 14 mortality risks: three  
19 measures of blood pressure, body mass index (BMI), four measures of blood cholesterol,  
20 educational attainment, height, parental lifespan, smoking initiation and cigarettes per day  
21 (smoking intensity), and (alcoholic) drinks per week. The average sample size was ~455,000,  
22 and the largest was above a million (atrial fibrillation).

23 Next, we performed quality control to exclude rare and low-quality SNPs (minor allele  
24 frequency less than 0.01 and imputation quality less than 0.9), in accordance with the standards  
25 of the field (Winkler et al. 2014). It is recommended to exclude such SNPs to increase the  
26 signal-to-noise ratio in polygenic scores (Kuchenbaecker et al. 2017). We estimated SNP  
27 heritabilities (the proportion of variation explained by a set of SNPs) by applying LD Score  
28 regression on the GWAS results (Bulik-Sullivan, Loh, et al. 2015; Bulik-Sullivan, Finucane,  
29 et al. 2015). The method utilizes the fact that under a polygenic model, genetic variants that  
30 are correlated—in *linkage disequilibrium* (LD)—with many other variants are more likely to  
31 capture genetic signals across a genome. A variant's LD Score, the sum of its squared  
32 correlations with other variants, has a proportional relationship with the expectation of its

1 association test statistic. This relationship can be transformed to an approximate lower-bound  
2 SNP heritability and to test for population stratification under various conditions (Lee, McGue,  
3 et al. 2018).

4 To eliminate GWAS with negligible genetic signals, we excluded two traits for which LD Score  
5 heritability was not distinguishable from zero at the preregistered threshold  $P$  value less than  
6 0.001: (1) large artery stroke ( $h^2 = 0.07\%$ ;  $P = 0.59$ ) and (2) small vessel stroke ( $h^2 = 0.25\%$ ;  
7  $P = 0.037$ ). The heritability of the 27 remaining traits ranged from 0.7% (cardioembolic stroke)  
8 to 45.9% (height). Next, we estimated pairwise LD Score genetic correlations ( $r_g$ ) (Bulik-  
9 Sullivan, Finucane, et al. 2015) (**Supplementary Table 1** and **Supplementary Figure 2**). The  
10 method estimates genetic correlations by utilizing the overlap in association test statistics  
11 across SNPs as a measure of genetic covariance while adjusting for LD and sample overlap. It  
12 has been shown that the method can robustly estimate genetic overlap across a range of  
13 plausible confounding scenarios (Lee, McGue, et al. 2018). Importantly, we found that most  
14 of the common medical conditions and mortality risks we collected were moderately  
15 genetically correlated with parental lifespan, which suggests that they should be able to capture  
16 variation in survival (Timmers et al. 2019; McDaid et al. 2017; Marioni et al. 2016; Daetwyler,  
17 Villanueva, and Woolliams 2008).

**Table 2. GWAS results for common medical conditions and mortality risks**

Traits	Domain	Relevance	GWAS $N$	LD Score $h^2$	SE ( $h^2$ )	$P$ value ( $h^2$ )	$\lambda$ GC	Mean $\chi^2$	$M$ SNPs in polygenic score	Reference
Alzheimer's disease	Neuropsychiatry	Medical condition	455,258	1.4%	0.20%	<b>0.000</b>	1.086	1.126	58,587	(Jansen et al. 2019)
Any ischemic stroke	Neurology	Medical condition	446,696	1.3%	0.13%	<b>0.000</b>	1.121	1.140	61,911	(Malik et al. 2018)
Any stroke	Cardiology/Neurology	Medical condition	446,696	1.3%	0.14%	<b>0.000</b>	1.124	1.148	62,712	(Malik et al. 2018)
Atrial fibrillation	Cardiology	Medical condition	1,030,836	2.4%	0.21%	<b>0.000</b>	1.293	1.517	89,934	(Nielsen et al. 2018)
Body mass index (BMI)	Metabolic/Lifestyle	Mortality risk	795,640	19.0%	0.54%	<b>0.000</b>	2.787	3.986	208,732	(Yengo et al. 2018)
Breast cancer	Oncology	Medical condition	228,951	13.3%	1.04%	<b>0.000</b>	1.362	1.683	95,858	(Michailidou et al. 2017)
Cardioembolic stroke	Cardiology	Medical condition	446,696	0.7%	0.12%	<b>0.000</b>	1.108	1.120	59,268	(Malik et al. 2018)
Chronic kidney disease	Urology	Medical condition	444,971	1.4%	0.17%	<b>0.000</b>	1.146	1.199	67,634	(Wuttke et al. 2019)
Cigarettes per day	Oncology/Lifestyle	Mortality risk	109,804	9.5%	1.01%	<b>0.000</b>	1.184	1.216	68,207	(Abbott et al. 2017)
Coronary artery disease	Cardiology	Medical condition	547,261	5.9%	0.32%	<b>0.000</b>	1.362	1.619	100,938	(van der Harst and Verweij 2018)
Depression	Psychiatry	Medical condition	500,199	6.0%	0.23%	<b>0.000</b>	1.453	1.604	107,705	(Howard et al. 2019)
Diastolic blood pressure	Cardiology	Mortality risk	757,601	13.0%	0.53%	<b>0.000</b>	2.047	3.191	186,290	(Evangelou et al. 2018)
Drinks per week	Metabolic/Lifestyle	Mortality risk	414,343	6.9%	0.30%	<b>0.000</b>	1.407	1.584	106,587	(Karlsson Linnér et al. 2019)
Educational attainment	Behavior/Lifestyle	Mortality risk	756,382	10.7%	0.27%	<b>0.000</b>	2.090	2.642	184,905	(Lee et al., 2018)
HDL cholesterol	Metabolic	Mortality risk	187,167	21.4%	2.85%	<b>0.000</b>	1.020	1.210	45,927	(Willer et al. 2013)
Height	Cross-domain	Mortality risk	709,706	45.9%	2.13%	<b>0.000</b>	3.613	9.042	271,528	(Yengo et al. 2018)
Insomnia	Psychiatry	Medical condition	386,533	4.6%	0.20%	<b>0.000</b>	1.310	1.367	84,329	(Jansen et al. 2019)
Large artery stroke	Cardiology	Medical condition	446,696	0.1%	0.13%	0.538	1.108	1.113	Excluded	(Malik et al. 2018)
LDL cholesterol	Metabolic	Mortality risk	173,082	20.3%	3.24%	<b>0.000</b>	1.014	1.194	45,388	(Willer et al. 2013)
Parental lifespan	Cross-domain	Mortality risk	640,189	2.4%	0.13%	<b>0.000</b>	1.300	1.342	82,676	(Timmers et al. 2019)
Prostate cancer	Oncology	Medical condition	140,254	14.8%	1.81%	<b>0.000</b>	1.217	1.460	60,248	(Schumacher et al. 2018)
Pulse pressure	Cardiology	Mortality risk	745,820	11.4%	0.40%	<b>0.000</b>	1.914	2.822	171,127	(Evangelou et al. 2018)
Schizophrenia	Psychiatry	Medical condition	105,318	42.0%	1.52%	<b>0.000</b>	1.691	1.977	134,764	(Pardiñas et al. 2018)
Small vessel stroke	Cardiology	Medical condition	446,696	0.3%	0.12%	0.037	1.080	1.094	Excluded	(Malik et al. 2018)
Smoking initiation	Oncology/Lifestyle	Mortality risk	518,633	8.9%	0.29%	<b>0.000</b>	1.637	1.929	136,392	(Karlsson Linnér et al. 2019)
Systolic blood pressure	Cardiology	Mortality risk	745,820	13.3%	0.49%	<b>0.000</b>	2.090	3.154	187,442	(Evangelou et al. 2018)
Total cholesterol	Metabolic	Mortality risk	187,365	21.2%	2.73%	<b>0.000</b>	1.014	1.237	47,713	(Willer et al. 2013)
Triglycerides	Metabolic	Mortality risk	177,861	21.5%	3.49%	<b>0.000</b>	1.002	1.219	45,077	(Willer et al. 2013)
Type 2 diabetes	Metabolic	Medical condition	231,426	19.4%	0.86%	<b>0.000</b>	1.626	1.958	130,042	(Mahajan et al. 2018)



## 1 **2.2.2 Polygenic scores**

2 In our study sample, we computed polygenic scores as linear combinations of individual-level  
3 genotypes weighed by trait-specific GWAS effects. Thus, polygenic scores aggregate an  
4 individual's genetic liability (or propensity) towards a trait or disease into a genetic predictor  
5 (Dudbridge 2013; Khera et al. 2018; Torkamani, Wineinger, and Topol 2018). The  $i$ th  
6 respondent's polygenic score for the  $k$ th trait,  $\hat{S}_{ik}$ , was computed as

$$(1) \quad \hat{S}_{ik} = \sum_{j=1}^M \hat{\beta}_{jk} g_{ij}$$

7 where the respondent's genotype  $g_{ij}$  at SNP  $j$  was weighed by the corresponding trait-specific  
8 GWAS effect,  $\hat{\beta}_{jk}$ , and then summed across  $M$  SNPs. In the regression analyses below, we  
9 entered multiple polygenic scores on the right-hand side of the regression equation, which can  
10 increase the predictive accuracy of genetically correlated outcomes (Krapohl et al. 2017).

11 We excluded weak GWAS associations at a  $P$  value greater than 0.05 to reduce noise from  
12 estimation error (Choi and O'Reilly 2019) and then constructed polygenic scores using the  
13 remaining SNPs that overlapped with the 1.4 million SNPs in the high-quality consensus  
14 genotype set established by the International HapMap 3 Consortium (Altshuler et al. 2010;  
15 Chang et al. 2015). This is a common approach that achieves reasonable genome-wide  
16 coverage with high imputation accuracy without including too many correlated SNPs, which  
17 can reduce predictive accuracy (Karlsson Linnér et al. 2019; Lee, Wedow, et al. 2018). The  
18 final number of SNPs in the scores ranged from 45,077 to 271,528 (**Table 2**). HRS participants  
19 did not obtain any information about their polygenic values.

## 20 **2.2.3 Univariate survival analysis and Cox proportional hazards regression**

21 We first performed a series of nonparametric univariate analyses of respondent, maternal, and  
22 paternal survival by estimating stratified Kaplan-Meier survival functions (**Supplementary**  
23 **Table 2**) (Kaplan and Meier 1958; Clark et al. 2003). A benefit of analyzing parental survival  
24 is reduced censoring and mortality selection, but a disadvantage is that offspring genotypes are  
25 a noisy measure of parental genotypes (Wright et al. 2019). Additionally, mortality risks  
26 change over time, and it is questionable whether the same genetic and environmental risks  
27 remain relevant. We analyzed monthly survival in the respondents but observed only yearly  
28 survival in the parents.

1 While the univariate analysis can suggest factors that appear to be associated with survival, it  
2 is not statistically conditioned on other variables (Hosmer and Lemeshow 1998). Therefore,  
3 we proceeded by performing multiple regression of respondent survival by estimating a series  
4 of Cox proportional hazards (PH) models (**Table 3** and **Supplementary Table 3**) (Bradburn  
5 et al. 2003a; Royston and Altman 2013). We did not perform Cox regression of parental  
6 survival because we could not observe its covariates. In these analyses, we included 10  
7 standardized genetic PCs. Because of the HRS household structure, we clustered the standard  
8 errors at the household level. We estimated four nested regression models hierarchically. In  
9 summary, the models included the following regressors in addition to the genetic PCs:

- 10 1. all polygenic scores except the score for parental lifespan;
- 11 2. model (1) together with sex-specific birth-year dummies, birth-month dummies, and  
12 demographic and socioeconomic covariates, including years of schooling and income;
- 13 3. model (2) together with the polygenic score for parental lifespan; and
- 14 4. model (3) together with covariates from the health and lifestyle risk domains, including  
15 BMI, smoking, drinking, parental lifespan, subjective life expectancy, self-rated health,  
16 and 11 indicators for categories of diagnosed medical conditions.

17 Overall, we consider model (3) to be our preferred model for the development of a prognostic  
18 index of genetic risk that could be evaluated early in life before any signs or symptoms of  
19 disease emerge (see below). At the same time, model (4) indicates whether polygenic scores  
20 have any capacity to distinguish lifespan above and beyond the inclusion of intermediate  
21 variables that lie on the causal pathway between genetic risk and mortality, such as manifested  
22 medical conditions.

#### 23 **2.2.4 Model diagnostics and fit**

24 We evaluated a series of model diagnostics for the Cox models (Moore 2016; Bradburn et al.  
25 2003b; Klein and Moeschberger 2003). First, we checked whether the models or any of the  
26 regressors violated the PH assumption by testing the scaled Schoenfeld residuals for  
27 association with time to event. Second, we examined whether we had chosen a suitable  
28 functional form for the covariates by visually inspecting their relationship with the Martingale  
29 residuals. Third, we examined the deviance residuals for outliers or influential observations.

30 We then assessed the model fit. We computed likelihood-ratio tests, Wald tests, and log-rank  
31 tests to evaluate whether the regressors improved the model fit above the null model. Next, we

1 computed the Cox-Snell pseudo- $R^2$ , Harrell's  $c$  statistic, and Gönen & Heller's  $K$  statistic  
2 (Harrell Jr et al. 1982). The latter two are concordance measures that compare the observed  
3 time to event with the ranks of the respondents' hazards as predicted by the fitted model, akin  
4 to an area under the ROC curve (AUC) measure (Royston and Altman 2013). In the next  
5 section, we explain how we computed the Royston & Sauerbrei  $R_B^2$  measure of model fit.  
6 Finally, we performed likelihood-ratio tests between the nested models to examine whether  
7 model fit improved. Because of the large number of events,  $N_{\text{deceased}} = 2,332$ , we performed no  
8 stepwise covariate selection.

### 9 **2.2.5 Prognostic indices of survival**

10 To investigate how well the polygenic scores, when combined, could stratify survival relative  
11 to (i) genetic PCs and (ii) covariates, we computed three prognostic indices (PI) for each of the  
12 four Cox models. In this context, a PI is a weighted sum of multiple variables, which are  
13 weighed by their Cox coefficients. In other words, we aggregated the influence of sets of  
14 variables into hazard indices. The  $i$ th respondent's PI across the polygenic scores was  
15 computed as

$$(2) \quad \hat{P}I_{PGS,i} = \sum_{k=1}^K \hat{\alpha}_k \hat{S}_{ik}$$

16 where the respondent's polygenic score,  $\hat{S}_{ik}$ , was weighed by its Cox regression coefficient,  
17  $\hat{\alpha}_k$ , and then summed across the  $K$  polygenic scores. The PIs for the genetic PCs ( $\hat{P}I_{PC}$ ) and the  
18 covariates ( $\hat{P}I_{COVAR}$ ) were computed analogously, with the exception that  $\hat{P}I_{COVAR}$  excluded  
19 the sex-specific birth-year dummies and the birth-month dummies, because we considered  
20 those to capture time and sampling effects rather than meaningful individual differences.

21 To evaluate the relative variance explained by the three PIs— $\hat{P}I_{PGS}$ ,  $\hat{P}I_{PC}$ , and  $\hat{P}I_{COVAR}$ —we  
22 computed the Royston & Sauerbrei  $R_B^2$  measure of model fit (Royston and Sauerbrei 2004;  
23 Royston and Altman 2013; Bradburn et al. 2003b). This method orders respondents according  
24 to a PI and then projects them onto a normal distribution to attain so-called rankits (expected  
25  $Z$ -scores based on the order and number of the individuals). Then, an auxiliary Cox regression  
26 is performed on the rankits alone, and the resulting regression coefficient can be transformed  
27 into a measure of explained variation on the log hazard scale. Thus,  $R_B^2$  is more similar to the  
28 traditional coefficient of determination ( $R^2$ ) of linear regression than to the Cox-Snell pseudo-

1  $R^2$ , which is computed as ratios of log-likelihoods. We performed this comparison across all  
2 four Cox models (**Supplementary Table 3**).

### 3 **2.2.6 Comparison of stratified survival functions**

4 Next, for Cox models (3) and (4), we compared stratified survival functions in two ways: the  
5 first comparison (a) was stratified by the top versus lower nine deciles of the PI distribution,  
6 and the second comparison (b) was stratified by the top versus bottom deciles. Comparison (a)  
7 was deliberately chosen to mirror medical underwriting, where primarily individuals with a  
8 substantially increased risk are classified as substandard and charged a higher premium  
9 (Nabholz and Somerville 2011; Rothstein 2004), while comparison (b) was similar to a  
10 traditional extreme-groups approach (Preacher et al. 2005; Timmers et al. 2019). We report  
11 both comparisons but focus our discussion on the first comparison (a), which did not discard  
12 any data. In these analyses, the  $\widehat{PI}_{PGS}$  based on model (3) was our preferred genetic predictor  
13 of interest (**Table 4** and **Figure 1**). We performed a log-rank test to determine whether the  
14 survival functions of the two groups in each comparison differed, and we evaluated the size of  
15 the difference in median lifespan (Clark et al. 2003). Thereafter, we stratified survival by the  
16 three PIs simultaneously but only for comparison (a), as simultaneously stratifying by the top  
17 and bottom deciles of the three PIs would include too few respondents (**Table 5** and **Figure 2**).

### 18 **2.2.7 Benchmark to conventional actuarial risk factors**

19 To benchmark the  $\widehat{PI}_{PGS}$ , we stratified Kaplan-Meier survival functions by each of the  
20 following conventional actuarial risk factors (**Supplementary Table 4** and **Supplementary**  
21 **Figure 6**): smoking (never, current, and former); BMI; years of schooling; log of household  
22 income; sex; and ever diagnosed with (a) high blood pressure (or hypertension), (b) diabetes  
23 (or high blood sugar), (c) cancer (or malignant tumor except skin cancer), (d) chronic lung  
24 disease (except asthma such as chronic bronchitis or emphysema), (e) heart conditions (such  
25 as heart attack or coronary heart disease), or (f) stroke (or transient ischemic attack). To avoid  
26 mortality selection from the genotyping procedure, we performed this analysis in both our  
27 study sample and the full sample of 27,345 European HRS respondents.

### 28 **2.2.8 Cross-validation of the preferred Cox model**

29 To maximize the sample size, we analyzed the PIs in the same sample as the one used to  
30 estimate the Cox coefficients. Therefore, we performed a cross-validation with 1,000 iterations  
31 for our preferred model (3) to evaluate the possibility of overfitting (Royston and Sauerbrei

1 2004). In each iteration, we trained the coefficients of the  $\hat{P}I_{PGS}$  in a random sample containing  
2 65% of the households ( $H_{\text{training}} = 4,325$ ) and used the remaining households as a validation  
3 sample ( $H_{\text{validation}} = 2,329$ ). First, we evaluated the so-called “calibration slope” by fitting the  
4  $\hat{P}I_{PGS}$  in model (3) instead of the polygenic scores (Royston and Altman 2013). If the slope is  
5 different from one, then the cross-validation discrimination is either better ( $>1$ ) or worse ( $<1$ ).  
6 To test that hypothesis, we evaluated the median  $Z = \frac{\hat{\alpha}_{PI.PGS} - 1}{SE_{robust}}$  across the iterations. Second,  
7 across the iterations, we evaluated the median of the  $R_D^2$  and the median difference in lifespan,  
8 analogous to **section 2.2.6**.

### 9 **2.2.9 Subjective life expectancy, self-rated health, and economic variables**

10 We tested whether the  $\hat{P}I_{PGS}$  based on the Cox model (3) was associated with subjective life  
11 expectancy and self-rated health (**Supplementary Table 5**). Subjective life expectancy is  
12 defined as the ratio between respondents’ self-reported probability of surviving to a specific  
13 age divided by the life table prediction adjusted for age and sex. Because subjective life  
14 expectancy is normally distributed but left censored on 0, we performed both OLS and Tobit  
15 regressions on that outcome. Self-rated health was measured on a five-point Likert scale with  
16 the following categories: 1. Excellent; 2. Very good; 3. Good; 4. Fair; and 5. Poor. Thus, we  
17 estimated an ordinal logit regression. Both models controlled for the same covariates as our  
18 preferred model (3), and we clustered the standard errors at the household level.

19 We also tested the  $\hat{P}I_{PGS}$  based on the Cox model (3) for association with the following 11  
20 preregistered variables of relevance to economic research (**Supplementary Table 6**)<sup>c</sup>: (a)  
21 whether health limits the ability to work; (b) the self-reported probability of having a work-  
22 limiting health problem in the next 10 years; (c) the self-reported probability of working full-  
23 time after age 65; (d) plans to continue paid work in retirement; (e) concern about having  
24 enough retirement income; (f) planned retirement age (defined as planned retirement year  
25 minus birth year); (g) retirement satisfaction; (h) expectation of total retirement wealth; the  
26 percentage of waves covered by (i) life insurance or (j) by long-term care insurance; and (k)  
27 financial planning horizon. Depending on the distribution of each outcome, we applied either  
28 OLS, logit, or ordinal logit regression, with model (3) covariates and clustered standard errors.

---

<sup>c</sup> We also preregistered that we would study private health-insurance coverage. However, we found little variation in health-insurance coverage in the HRS, and thus, we dropped this particular analysis from power considerations.

## 3 Results

### 3.1 Results from the univariate survival analysis

With the 27 polygenic scores we constructed, we first performed univariate survival analyses of respondent, maternal, and paternal survival. The results are reported in **Supplementary Table 2** and **Supplementary Figures 3–5**. When survival was stratified by the top versus lower nine deciles of the score distribution, we found that 18 polygenic scores could significantly discriminate survival in either the respondents or their parents (at  $P < 0.05$ ), and eight were Bonferroni-significant corrected for 27 traits. With respect to respondent survival, the following polygenic scores had a strong and significant influence (defined here as a  $>1$  year difference in the median lifespan): (a) Alzheimer’s disease (1.2 y), (b) any ischemic stroke (1.3 y), (c) any stroke (1.6 y), (d) BMI (1.3 y), (d) cigarettes per day (2.2 y), (e) educational attainment (1.3 y), (f) prostate cancer (1.2 y), and (g) type 2 diabetes (1.6 y). As for the parents, the score for parental lifespan had the strongest influence (4 and 6 y in the mothers and fathers, respectively).

All univariate associations with respondent and parental survival were in the expected direction, except the association between respondent survival and the score for prostate cancer. (That score was not associated with parental survival.) Therefore, we performed an ad hoc robustness check to ensure that this score was associated with the likelihood of reporting a cancer diagnosis, and this association indeed was in the expected direction ( $P = 0.0007$ ). Considered on its own, prostate cancer has an overall high survival rate as long as it is detected before metastasizing (Noone et al. 2018). We speculate that the genetic risk of prostate cancer may lead to certain health benefits if diagnosed early, such as more frequent doctor checkups or changes in lifestyle, which could explain the unexpected direction of effect; however, we emphasize that replication is necessary.

### 3.2 Results from the Cox proportional hazards regression

We report a selection of the multivariate survival analysis results in **Table 3** and the complete results in **Supplementary Table 3**. In our preferred model (3), we identified associations with the polygenic scores for Alzheimer’s disease ( $\hat{\alpha} = 0.052$ ;  $P = 0.022$ ), atrial fibrillation ( $\hat{\alpha} = 0.054$ ;  $P = 0.019$ ), cigarettes per day ( $\hat{\alpha} = 0.073$ ;  $P = 0.001$ ), height ( $\hat{\alpha} = 0.049$ ;  $P = 0.046$ ), type 2 diabetes ( $\hat{\alpha} = 0.054$ ;  $P = 0.036$ ), and parental lifespan ( $\hat{\alpha} = -0.087$ ;  $P < 0.001$ ). All estimated effects were in the anticipated direction. Importantly, we could not detect a violation

1 of the PH assumption ( $P$  of the global  $\chi^2 = 0.404$ ), and the model attained a satisfactory fit  
2 (e.g., a Cox and Snell  $R^2$  of 0.23). The  $R_D^2$  of the  $\hat{P}I_{PGS}$  was 0.039 (95% CI = 0.028–0.052),  
3 while the  $R_D^2$  of the  $\hat{P}I_{PC}$  and  $\hat{P}I_{COVAR}$  were 0.006 (0.002–0.011) and 0.113 (0.095–0.133),  
4 respectively. Thus, the polygenic scores explained substantially more of the variation on the  
5 log hazard scale than the genetic PCs, but it explained only about a third of the variation that  
6 the other model covariates did.

7 The only difference between model (2) and our preferred model (3) is the score for parental  
8 lifespan. That particular score was added separately because it may capture the influence of  
9 other scores, as suggested by the genetic correlations (**Supplementary Table 1** and  
10 **Supplementary Figure 2**). However, doing so did not notably influence the parameter  
11 estimates of the others, and the set of significant scores was the same between models (2) and  
12 (3). Notably, the effect of the score for parental lifespan in model (3) was the largest effect  
13 estimated for any of the polygenic scores across all four models ( $\hat{\alpha} = -0.087$ ;  $P = 0.0004$ ).

14 Model (4) was our most extensively adjusted model; it additionally included the two health  
15 measures subjective life expectancy and self-rated health, various lifestyle factors (such as  
16 smoking and drinking), observed parental lifespan, and 11 indicators for categories of medical  
17 diagnoses, such as “ever diagnosed with cancer (or malignant tumor except skin cancer)”.  
18 Unfortunately, medical diagnoses were available only as binary indicators. Nevertheless, our  
19 primary interest is in model (3), which can be evaluated early in life. As could be expected by  
20 including directly observed health variables, model (4) drastically improved the model fit over  
21 both the null model and model (3) (both  $P \sim 0$ ). However, model (4) also strongly violated the  
22 PH assumption ( $P$  of the global  $\chi^2 = 0.00003$ ). Reassuringly, the estimates of the polygenic  
23 scores, which we were particularly interested in, appeared highly stable across all four model  
24 specifications.

**Table 3. Selection of hierarchical Cox regression results<sup>1</sup>**

	Model 3 (N = 9,246; deaths = 2,321)	Model 4 (N = 9,007; deaths = 2,223)
Regressors (polygenic scores shown in bold)	Coefficient (Robust SE)	Coefficient (Robust SE)
<b>Alzheimer's disease</b>	0.052 (0.023)*	0.057 (0.024)*
<b>Atrial fibrillation</b>	0.054 (0.023)*	0.046 (0.025) †
<b>Cigarettes per day (smoking intensity)</b>	0.073 (0.023)***	0.064 (0.024)**
<b>Height</b>	0.049 (0.025)*	0.045 (0.026)
<b>Type 2 diabetes</b>	0.054 (0.026)*	0.029 (0.028)
<b>Parental lifespan</b>	-0.087 (0.025)***	-0.058 (0.028)*
Sex (0 = Male; 1 = Female)	-0.872 (0.241)***	-0.568 (0.302) †
Census region (base: Northeast)		
– Midwest	-0.107 (0.072)	-0.035 (0.075)
– South	0.048 (0.068)	0.034 (0.072)
– West	-0.063 (0.080)	0.023 (0.083)
Years of schooling	-0.058 (0.010)***	-0.024 (0.010)*
Log of total household income (2016 prices)	-0.201 (0.046)***	-0.089 (0.047) †
Labor force participation (base: Works full-time)		
– Works part-time	-0.167 (0.169)	-0.066 (0.165)
– Unemployed	0.276 (0.532)	0.243 (0.552)
– Partly retired	-0.335 (0.111)**	-0.355 (0.118)**
– Retired	-0.251 (0.073)***	-0.385 (0.076)***
– Disabled	1.119 (0.270)***	0.725 (0.314)*
– Not in labor force	-0.148 (0.117)	-0.198 (0.118) †
Received “Social Security” (OASDI) in any wave	-0.430 (0.117)***	-0.496 (0.124)***
Married or partnered in any wave	-0.200 (0.071)**	-0.158 (0.072)*
Widowed in any wave	-0.357 (0.056)***	-0.348 (0.057)***
Sex-specific birth-year dummies	YES	YES
Birth-month dummies	YES	YES
Subjective life expectancy		-0.086 (0.029)**
Self-rated health (Base: 1. Excellent)		
– 2. Very good		-0.050 (0.089)
– 3. Good		0.304 (0.091)***
– 4. Fair		0.633 (0.102)***
– 5. Poor		1.069 (0.134)***
BMI		0.013 (0.006)*
Alcoholic drinks per week		0.012 (0.005)*
Current smoker		0.812 (0.071)***
Ever smoker		0.193 (0.053)***
Maternal max attained age		-0.003 (0.002) †
Paternal max attained age		-0.003 (0.002)*
Ever diagnosed with high blood pressure		-0.022 (0.054)
Ever diagnosed with diabetes		0.136 (0.054)*
Ever diagnosed with cancer		0.244 (0.049)***
Ever diagnosed with chronic lung disease		0.348 (0.058)***
Ever diagnosed with heart conditions		0.069 (0.049)
Ever diagnosed with stroke		0.091 (0.058)
Ever diagnosed with psychiatric disorder		0.082 (0.105)
Ever diagnosed with arthritis		-0.165 (0.056)**
Ever diagnosed with Alzheimer's disease		0.208 (0.090)*
Ever diagnosed with dementia		-0.180 (0.082)*
Ever diagnosed with back problems		-0.356 (0.053)***
Global test if model violates PH assumption	$\chi^2(128 df) = 131.0; P = 0.404$	$\chi^2(150 df) = 203.0; P < 0.001$
Cox-Snell $R^2$	0.231	0.286
Harrel's $c$ statistic	0.816 (0.004)	0.850 (0.004)
Gönen & Heller's $K$ statistic	0.857 (0.003)	0.862 (0.003)

Notes: †  $P \leq 0.1$ ; \*  $P \leq 0.05$ ; \*\*  $P \leq 0.01$ ; \*\*\*  $P \leq 0.001$ . Robust standard errors were clustered at the household level.

1 The complete results are reported in **Supplementary Table 3**.



### 1 3.3 Results from the prognostic index analysis

2 With the Cox coefficients, we computed PIs for three sets of regressors: (i) the polygenic scores  
3 ( $\hat{PI}_{PGS}$ ), (ii) the genetic PCs ( $\hat{PI}_{PC}$ ), and (iii) the covariates ( $\hat{PI}_{covar}$ ). We first evaluated the  
4 relative influence of the three PIs within each model using the Royston & Sauerbrei  $R_D^2$   
5 (**Supplementary Table 3**). Across the four models, the proportion of variation explained on  
6 the log hazard scale by the  $\hat{PI}_{PGS}$  was between 0.03 and 0.041. The  $R_D^2$  of that index was stable  
7 across the four models, which suggested that the polygenic scores explained a non-negligible  
8 proportion of variation even when we adjusted for socioeconomic variables, observable health  
9 risks, and other potential confounders.

10 Next, we used the PIs based on models (3) and (4) to stratify Kaplan-Meier survival functions,  
11 first using only  $\hat{PI}_{PGS}$  (**Table 4** and **Figure 1**).  $\hat{PI}_{PGS}$  based on model (3) could distinguish a  
12 3.5-year difference in median lifespan in comparison (a) between the top decile ( $N = 927$ ) and  
13 the lower nine deciles ( $N = 8,345$ ) and a 4.4-year difference in comparison (b) between the top  
14 decile and the bottom decile ( $N = 928$ ). As expected, the  $\hat{PI}_{PGS}$  based on model (4) could  
15 distinguish somewhat less: 2.9 and 4.1 years in comparisons (a) and (b), respectively. The  $P$   
16 values of the log-rank tests between the groups were all less than  $7.91 \times 10^{-13}$ . Thus, the  $\hat{PI}_{PGS}$   
17 could distinguish a greater difference in median lifespan than any of the scores could on their  
18 own in the univariate analysis, even when based on the most extensively adjusted model (4).

19 Thereafter, we stratified survival using the three PIs simultaneously (**Table 5** and **Figure 2**).  
20 Here, we performed only comparison (a) (see **Methods**). With respect to the PIs based on  
21 model (3), respondents' median lifespan was 3.1 years shorter in the top decile of  $\hat{PI}_{PGS}$  ( $N =$   
22 736) than in the lower nine deciles of all three PIs ( $N = 6,674$ ) and was similar to the shorter  
23 median lifespan in the top decile of  $\hat{PI}_{COVAR}$  (3.9 y;  $N = 723$ ). The few individuals who were  
24 in the top decile of both the  $\hat{PI}_{PGS}$  and the  $\hat{PI}_{COVAR}$  ( $N = 97$ ) had an 8.1-year shorter median  
25 lifespan. The log-rank test was highly significant ( $P = 2.78 \times 10^{-75}$ ).

26 As could be expected, in the analogous analysis based on model (4), the capacity of the  $\hat{PI}_{PGS}$   
27 was somewhat reduced. Compared to the lower nine deciles of all three PIs ( $N = 6,605$ ), the  
28 median lifespan was 2.4 years shorter in the top decile of the  $\hat{PI}_{PGS}$  ( $N = 694$ ), 10.7 years shorter  
29 for the  $\hat{PI}_{COVAR}$  ( $N = 696$ ), and an astonishing 14.8 years shorter for respondents in the top  
30 decile of both the  $\hat{PI}_{PGS}$  and the  $\hat{PI}_{COVAR}$  ( $N = 110$ ). Respondents in the top decile of all three  
31 PIs had an 18.5-year shorter median lifespan, but we caution that this estimate is very noisy

1 given the low number of observations in this cell ( $N = 11$ ). Again, the log-rank test was highly  
2 significant ( $P = 3.59 \times 10^{-271}$ ). Overall, adding health variables and medical conditions  
3 drastically increased the discriminatory capacity of the  $\hat{P}I_{COVAR}$ , while it only slightly reduced  
4 the capacity of the  $\hat{P}I_{PGS}$ , suggesting that the polygenic scores were able to add information  
5 above and beyond the inclusion of these intermediate variables.

### 6 **3.3.1 Benchmark to conventional actuarial risk factors**

7 We benchmarked how well the  $\hat{P}I_{PGS}$  could distinguish median lifespan in comparison to  
8 conventional actuarial risk factors (**Supplementary Table 4** and **Supplementary Figure 6**).  
9 In that capacity, the  $\hat{P}I_{PGS}$  was comparable to sex (2.8 and 3.2 y in our study sample and the  
10 full sample of European HRS respondents, respectively), former smoker (2.5 and 3.4 y), and  
11 ever diagnosed with diabetes or high blood sugar (1.7 and 3.6 y). The  $\hat{P}I_{PGS}$  distinguished a  
12 greater difference than several conventional risk factors, including the top decile of years of  
13 schooling (corresponding to more than 16 years of schooling; 1.3 and 2 y), ever diagnosed with  
14 cancer (or malignant tumor except skin cancer; 1.2 and 1.7 y), and ever diagnosed with heart  
15 conditions (such as heart attack, coronary heart disease, angina, congestive heart failure, or  
16 other heart problems; 0.8 and 0.7 y). The  $\hat{P}I_{PGS}$  distinguished a smaller difference than the top  
17 decile of BMI (corresponding to BMI > 38.6; 4.4 and 5.3 y), current smoker (9.9 and 11.4 y),  
18 and ever diagnosed with chronic lung disease (except asthma, such as chronic bronchitis or  
19 emphysema; 4.3 and 4.3 y). Notably, these comparisons show that the ability of polygenic  
20 scores to classify individuals into groups of different mortality risks is similar to or better than  
21 that of several conventional actuarial risk factors when the polygenic scores are combined into  
22 our preferred genetic predictor, with the major difference that the prognostic index can be  
23 evaluated at a young age.

**Table 4. Kaplan-Meier survival estimates stratified by a prognostic index (PI)**

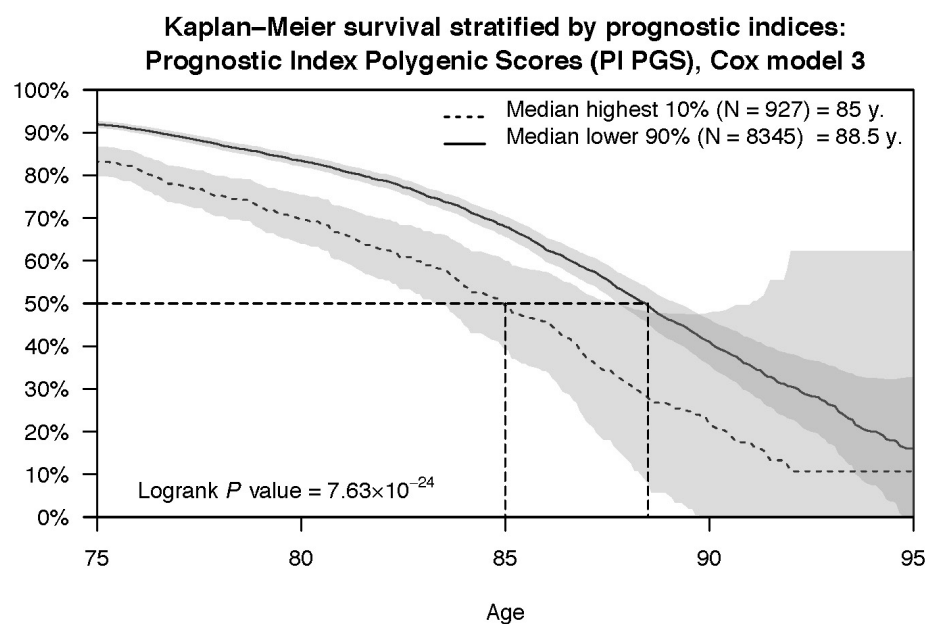
Panel A. Top versus lower nine deciles (Cox model 3 coefficients)						
Respondents in PI <sub>PGS</sub>	<i>N</i>	Events	Median (years)	95% lower CL	95% upper CL	Log-rank <i>P</i> (H <sub>0</sub> : no difference)
Lower nine deciles	8345	2025	88.5	88.1	88.8	<b>0.000</b>
Top decile	927	307	85.0	84.0	86.2	
Panel B. Top versus bottom decile (Cox model 3 coefficients)						
Respondents in PI <sub>PGS</sub>	<i>N</i>	Events	Median (years)	95% lower CL	95% upper CL	Log-rank <i>P</i> (H <sub>0</sub> : no difference)
Bottom decile	928	213	89.4	88.4	90.7	<b>0.000</b>
Top decile	927	307	85.0	84.0	86.2	
Panel C. Top versus lower nine deciles (Cox model 4 coefficients)						
Respondents in PI <sub>PGS</sub>	<i>N</i>	Events	Median (years)	95% lower CL	95% upper CL	Log-rank <i>P</i> (H <sub>0</sub> : no difference)
Lower nine deciles	8345	2039	88.3	88.0	88.7	<b>0.000</b>
Top decile	927	293	85.4	84.8	86.5	
Panel D. Top versus bottom decile (Cox model 4 coefficients)						
Respondents in PI <sub>PGS</sub>	<i>N</i>	Events	Median (years)	95% lower CL	95% upper CL	Log-rank <i>P</i> (H <sub>0</sub> : no difference)
Bottom decile	928	202	89.5	88.5	90.8	<b>0.000</b>
Top decile	927	293	85.4	84.8	86.5	

**Table 5. Kaplan-Meier survival estimates stratified by the prognostic indices (PIs)**

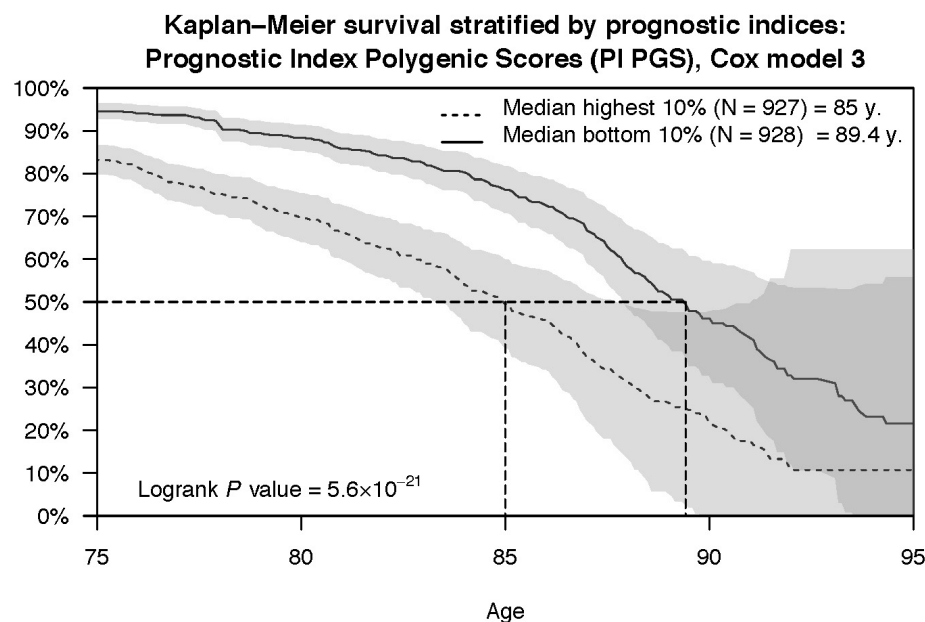
Panel A. Top versus lower nine deciles of the PIs (computed with model 3 coefficients)									
Respondents in PI <sub>PGS</sub>	Respondents in PI <sub>PC</sub>	Respondents in PI <sub>COVAR</sub>	<i>N</i>	Events	Median (years)	95% lower CL	95% upper CL	Log-rank <i>P</i> (H <sub>0</sub> : no difference)	
Lower nine deciles	Lower nine deciles	Lower nine deciles	6764	1571	88.9	88.6	89.3	<b>0.000</b>	
Top decile	Lower nine deciles	Lower nine deciles	736	236	85.8	84.6	86.7		
Top decile	Top decile	Lower nine deciles	82	29	84.2	81.2	89.5		
Top decile	Top decile	Top decile	10	3	80.8	59.4	--		
Lower nine deciles	Top decile	Lower nine deciles	740	204	88.0	86.7	88.6		
Lower nine deciles	Top decile	Top decile	94	28	79.0	77.7	85.2		
Lower nine deciles	Lower nine deciles	Top decile	723	211	85.0	83.2	86.2		
Top decile	Lower nine deciles	Top decile	97	39	80.8	74.0	82.4		
Panel B. Top versus lower nine deciles of the PIs (computed with model 4 coefficients)									
Respondents in PI <sub>PGS</sub>	Respondents in PI <sub>PC</sub>	Respondents in PI <sub>COVAR</sub>	<i>N</i>	Events	Median (years)	95% lower CL	95% upper CL		Log-rank <i>P</i> (H <sub>0</sub> : no difference)
Lower nine deciles	Lower nine deciles	Lower nine deciles	6605	1419	89.2	88.8	89.6	<b>0.000</b>	
Top decile	Lower nine deciles	Lower nine deciles	694	195	86.8	85.4	87.8		
Top decile	Top decile	Lower nine deciles	86	28	85.9	83.9	89.5		
Top decile	Top decile	Top decile	11	6	70.7	63.6	--		
Lower nine deciles	Top decile	Lower nine deciles	722	170	88.8	87.6	89.6		
Lower nine deciles	Top decile	Top decile	83	45	76.3	75.8	78.7		
Lower nine deciles	Lower nine deciles	Top decile	696	309	78.5	77.3	79.8		
Top decile	Lower nine deciles	Top decile	110	51	74.4	72.7	76.4		

**Figure 1. Kaplan-Meier survival curves stratified by the prognostic index of the polygenic scores.** Using the prognostic index of the polygenic scores ( $\hat{PI}_{PGS}$ ) computed with the coefficient estimates of Cox models (3) and (4), we performed two comparisons of stratified survival functions. The first comparison (panels **a** and **c**) was stratified by the top versus lower nine deciles of the PI distribution, while the second comparison (panels **b** and **d**) was stratified by the top versus bottom decile. The dashed lines display the median survival in the two strata. The log-rank  $P$  value indicates whether the survival functions (not the median) of the two strata are different.

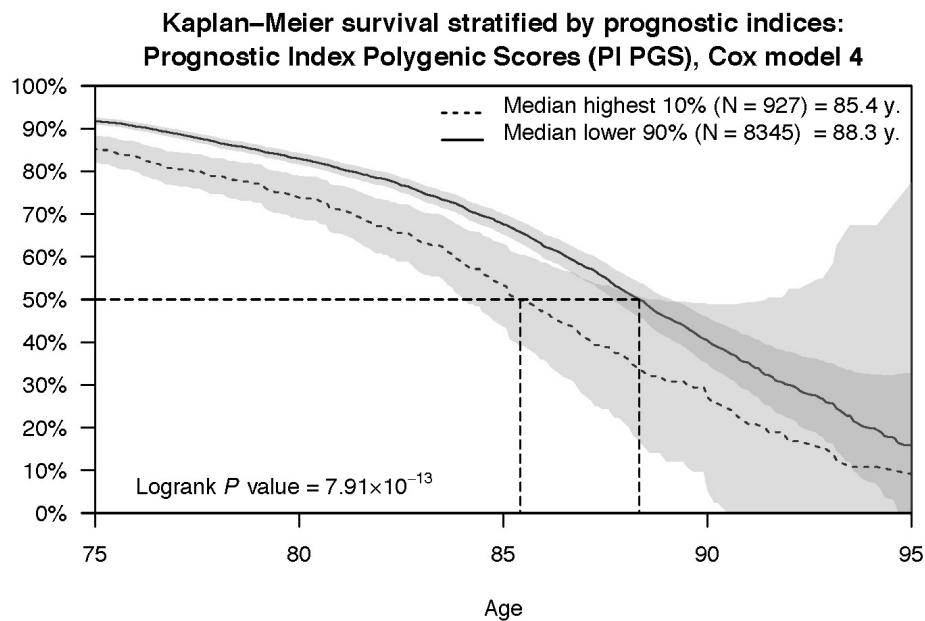
**a**



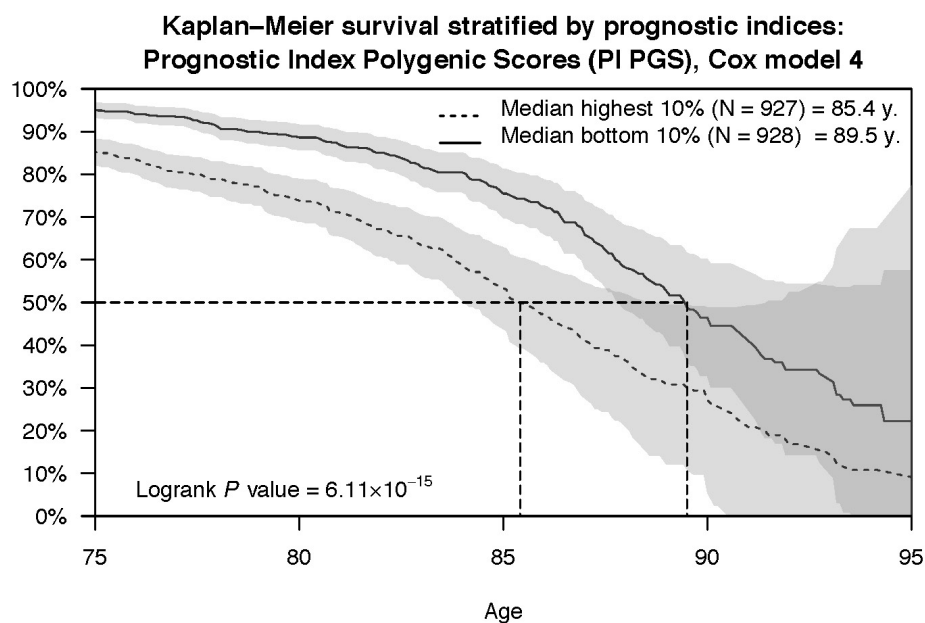
**b**



**c**

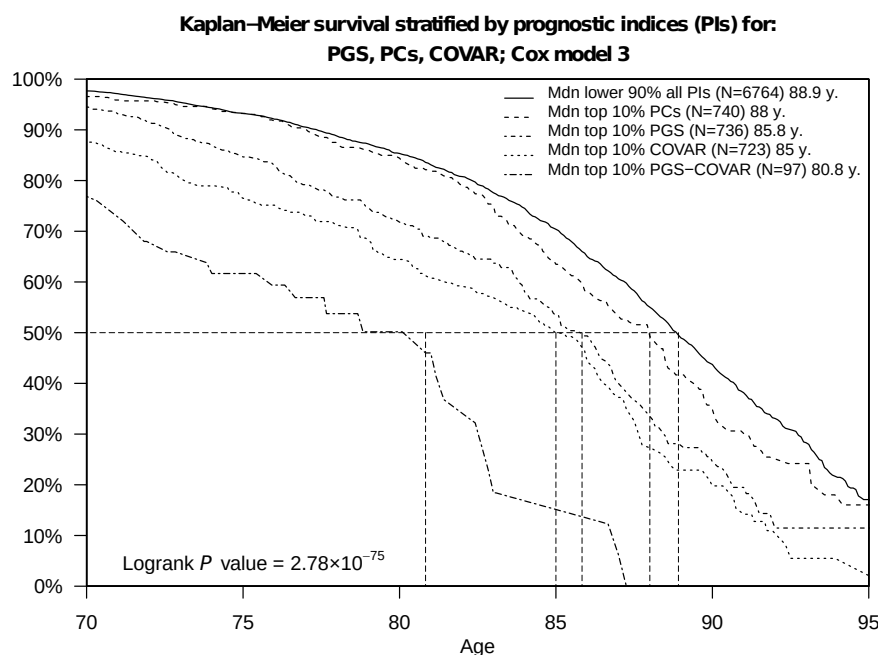


**d**

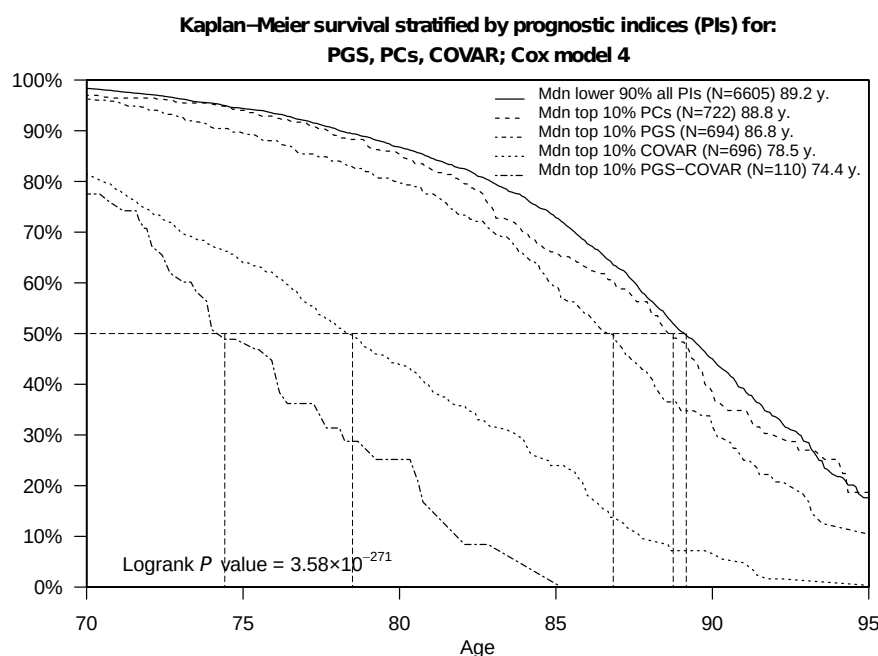


**Figure 2 Kaplan-Meier survival curves stratified by the three prognostic indices.** Using the prognostic indices of the polygenic scores ( $\hat{PI}_{PGS}$ ), the genetic PCs ( $\hat{PI}_{PC}$ ), and the covariates ( $\hat{PI}_{COVAR}$ ), computed with the coefficient estimates of Cox models 3 (panel a) and 4 (panel b), we compared the simultaneously stratified survival functions by the top versus lower nine deciles of the distribution of the three PIs. The dashed lines display the median survival in the strata. The log-rank  $P$  value indicates whether the survival functions (not the median) of the strata are different. Three strata are not displayed in the figure but instead in **Table 5**.

**a**



**b**



### 1 **3.3.2 Results of the cross-validation**

2 We performed a cross-validation of model (3) to examine whether evaluating the prognostic  
3 indices in the full study sample could have introduced overfitting. Across 1,000 iterations, the  
4 median  $Z$  statistic of the test of the calibration slope was only marginally significant ( $P =$   
5  $0.045$ ). Similarly, the median  $R_D^2$  of the  $\hat{P}I_{PGS}$  was  $0.023$  (instead of  $0.039$ ). The difference in  
6 median lifespan for comparisons (a) and (b) attenuated from  $3.5$  to  $2.7$  years and from  $4.4$  to  
7  $3.4$  years, respectively. These attenuated differences in median survival fell within the  
8 confidence intervals of the main estimates and remained strongly significant. Thus, the cross-  
9 validation suggested that the ability to distinguish lifespan was somewhat overestimated when  
10 evaluated in the full sample, but reassuringly, our conclusions remain supported by the cross-  
11 validation.

### 12 **3.3.3 Results from the analysis of subjective life expectancy, self-rated health, and** 13 **economic variables**

14 We investigated whether the polygenic scores were associated with subjective life expectancy  
15 and self-rated health. The results are reported in **Supplementary Table 5**. Our genetic  
16 predictor of interest was the  $\hat{P}I_{PGS}$  based on our preferred model (3), which had been  
17 standardized. For subjective life expectancy, the OLS and Tobit estimates were virtually  
18 identical, so we discuss only the Tobit results. The coefficient of the  $\hat{P}I_{PGS}$  was estimated to be  
19  $-0.052$  ( $SE = 0.008$ ;  $P = 8.03 \times 10^{-11}$ ). As expected, greater genetic risk was associated with  
20 reporting an expectation of a shorter lifespan. However, the effect was small compared to, say,  
21 being female ( $-2.047$ ;  $SE = 0.523$ ), living in the western part of the United States ( $0.143$ ;  $SE =$   
22  $0.030$ ), or being disabled ( $-0.298$ ;  $SE = 0.101$ ).

23 Next, we performed an ordinal logit regression of self-rated health (a higher value represents  
24 poorer health). In alignment with subjective life expectancy, we found that greater genetic risk  
25 was associated with reporting poorer health ( $\hat{\beta} = 0.195$ ;  $SE = 0.019$ ;  $P = 1.03 \times 10^{-24}$ ). Thus,  
26 assuming a proportional influence across the response categories, the odds ratio for being in a  
27 higher category was  $1.215$  per standard deviation of the  $\hat{P}I_{PGS}$ . The effect was similar to that  
28 of being female (OR =  $1.213$ ) but much smaller than that of being disabled (OR =  $8.315$ ).  
29 Overall, these results indicate that genetic risks had indeed manifested and been observed via  
30 the respondent's health.



1 Finally, we investigated whether the polygenic scores were associated with 11 economic  
2 variables. The results are reported in **Supplementary Table 6**. Our genetic predictor of  
3 interest, the  $\hat{PI}_{PGS}$  based on model (3), was significantly associated in the expected direction  
4 with five of the variables ( $P < 0.05$ ) and Bonferroni-significant with three of the variables ( $P$   
5  $< 0.0045$ ). That is, a standard deviation difference in the  $\hat{PI}_{PGS}$  was associated with a higher  
6 probability of having or expecting a work-limiting health problem (OR = 1.202;  $P = 1.08 \times 10^{-$   
7  $13$  and  $\hat{\beta} = 1.079$ ;  $P = 8.66 \times 10^{-4}$ , respectively), less retirement satisfaction<sup>d</sup> (OR = 1.132;  $P =$   
8  $1.08 \times 10^{-6}$ ), fewer waves of long-term care insurance coverage ( $\hat{\beta} = -0.007$ ;  $P = 0.0068$ ), and  
9 a shorter financial planning horizon<sup>e</sup> (OR = 0.953;  $P = 0.016$ ). However, the estimated effect  
10 sizes were relatively small, which could be expected based on the currently limited signal in  
11 the polygenic scores. For example, per standard deviation, the  $\hat{PI}_{PGS}$  was associated with  
12 reporting a 1-percentage-point greater probability of having a work-limiting health problem in  
13 the next 10 years and with 2.2 months shorter long-term care insurance coverage. Nonetheless,  
14 the effects were comparable with those of, say, years of schooling, which was also associated  
15 with these five outcomes. Across the five outcomes, the difference compared to years of  
16 schooling was the greatest for long-term care insurance, where a standard deviation increase in  
17 years of schooling was associated with 10 months longer coverage.

18 We could not detect that greater genetic risk was associated with life insurance ( $\hat{\beta} = 0.003$ ;  $SE$   
19  $= 0.004$ ;  $P = 0.373$ ). The estimated association corresponds to approximately 1 month longer  
20 life insurance coverage. In our study sample, we had only 14.5% statistical power to detect an  
21 effect of that size, which suggests that the association should be considered small. In contrast,  
22 we had 77.2% power to detect the aforementioned association with long-term care insurance,  
23 even though the difference in magnitude was minor. Nevertheless, our results show that  
24 polygenic scores for common diseases and mortality risks can already capture differences in  
25 economic outcomes, including insurance coverage.

## 26 **4 Discussion**

27 We investigated how well a broad set of polygenic scores for common diseases and mortality  
28 risks could distinguish differences in lifespan, and we benchmarked their performance in this  
29 regard to conventional actuarial risk factors. Our main finding is that polygenic scores have a

---

<sup>d</sup> Retirement satisfaction was coded as "1. very; 2. moderately; or 3. not at all".

<sup>e</sup> Financial planning horizon was coded as "1. next few months; 2. next year; 3. next few years; 4. next 5-10 years; or 5. longer than 10 years".

1 joint capacity to classify people into groups of different mortality risk that is non-negligible,  
2 and this capacity is comparable to that of some conventional risk factors, including sex, former  
3 smoking, and years of schooling. Moreover, we found that the classification was even stronger  
4 than that of some of the diagnosed medical conditions that have been ascertained in the HRS,  
5 including ever diagnosed with cancer. Because we performed this comparison and adjusted  
6 more extensively for observable confounders, our results extend the literature on this topic.  
7 Importantly, the polygenic scores could explain a nontrivial part of the variation even in our  
8 most extensively adjusted model. We emphasize that our results represent only a lower bound  
9 of the predictive accuracy that polygenic scores will reach once larger GWAS become available  
10 (Daetwyler, Villanueva, and Woolliams 2008; de Vlaming et al. 2017).

11 Given these results, it is reasonable to expect that commercial interest in offering genetic tests  
12 for disease, mortality risks, and longevity to consumers is bound to increase further. Similarly,  
13 our results imply that polygenic scores already contain information that could be valuable to  
14 the insurance industry (e.g., in underwriting) if insurers were able to obtain genetic data from  
15 applicants and customers. Depending on whether genetic health information will remain legally  
16 or voluntarily exempt from underwriting, adverse selection will be more or less likely to occur  
17 as more people acquire knowledge of their genetic risks.

18 We found a significant but small negative association between genetic liability and long-term  
19 care insurance. This association may become stronger as the signal in polygenic scores  
20 increases. A conceivable mechanism for the association could be that elderly individuals who  
21 have observed a decline in their health (partly due to their unobserved genetic variants) have  
22 chosen not to purchase this insurance or have chosen to let it lapse, as they may expect not to  
23 reach an age that will require long-term care. The probability of requiring assistance with  
24 activities of daily living becomes more substantial after age 85 (Dionne 2013), and we found  
25 that individuals in the top decile of genetic risk reached just about that age, at the median. The  
26 associations of our preferred genetic predictor with subjective life expectancy and self-rated  
27 health support the idea that the respondents had indeed partly observed unobserved genetic  
28 risks. Thus, our results may imply that long-term care insurance is subject to weak adverse  
29 selection. However, an alternative explanation could be the high premium markups reported  
30 for this particular insurance type (Dionne 2013; Glenzer and Achou 2019), which could have  
31 rendered the product unattractive for people who consider themselves to be at risk of dying  
32 early or too expensive for people with work-limiting health problems.

1 On the contrary, we did not find that our preferred genetic predictor was associated with life  
2 insurance coverage, though this association may also become stronger in the near future.  
3 However, a null finding aligns with previous studies that have found little evidence of adverse  
4 selection in that market (Sijbrands, Tornij, and Homsma 2009; Harris and Yelowitz 2014;  
5 McCarthy and Mitchell 2010). Additionally, life insurance is typically purchased at middle  
6 age, before many heritable medical conditions have had time to manifest (Nabholz and  
7 Rechfeld 2017). Thus, the difference between life insurance and long-term care insurance could  
8 be explained by the latter more often being purchased at an older age (Cornell et al. 2016).  
9 Nonetheless, the genetic data we studied here were most likely unobserved by the HRS  
10 participants since most waves of data were collected prior to the advent of consumer genetic  
11 testing for disease. In addition, most of the polygenic scores we generated are not yet part of  
12 genetic health reports offered to consumers. Thus, we should perhaps not expect that extensive  
13 self-selection has already occurred.

14 Next, our results imply that consumers will at some point have knowledge of genetic risks that  
15 they may be incentivized to disclose when purchasing insurance products tied to their survival.  
16 This would apply, e.g., in the market for “enhanced annuities” (that is, life annuities  
17 underwritten not only with demographic information but also with medical information).  
18 Applicants at greater risk could potentially benefit from lower premiums (or higher benefits) if  
19 their genetics risks were underwritten (Veysiére et al. 2017; Steinorth 2012). It has been  
20 reported that standard-rate life annuities may be actuarially unfair in the United States because  
21 premiums are determined using low-mortality assumptions to counter potential adverse  
22 selection (as it is assumed that this product is bought primarily by the healthiest and wealthiest)  
23 (Brown and Scahill 2010). In such a market, the possibility of revealing individual risks could  
24 benefit people with a reduced life expectancy who consider the standard rate expensive. At the  
25 same time, some experts argue that enhanced annuities could crowd out the standard rate  
26 product, and genetic testing may potentially exacerbate that development (Steinorth 2012).  
27 Overall, we consider further investigation of consumer behavior under conditions of private  
28 knowledge of genetic risks an interesting avenue of future research.

29 We think that as the accuracy of genetic predictors matures and more consumers acquire private  
30 knowledge of their genetic risks, genetic health information may eventually have to be treated  
31 just like any other kind of medical information that can currently be requested by insurance  
32 providers (Strohmenger and Wambach 2000). There are many scholars who argue that  
33 providers are already entrusted with handling very private and sensitive information, such as

1 medical journals and tests, and that there should be no reason to expect them to handle genetic  
2 information with any less prudence (Rothstein 2004). However, some of them consider it  
3 unethical to charge more for genetic factors that are outside of the control of the carrier, though  
4 a counterargument is that many conventional risks are also outside the control of the affected.  
5 Additionally, there is a real risk that insurance coverage may be denied to those who receive a  
6 burdening outcome in the “genetic lottery”, which results in greater need for solidarity (Prince  
7 2019). Importantly, it could be detrimental to public health if people avoid genetic testing for  
8 medical or research purposes out of fear of discrimination (Keogh et al. 2017).

9 Thus, strong arguments can be made that actuarial discrimination of any kind based on genetic  
10 factors should be restricted (Rothstein 2018; Newson et al. 2018). Additionally, we emphasize  
11 that genetic risk factors influencing common diseases are not deterministic, and some act via  
12 non-biological pathways, such as lifestyle choices, that are yet undetermined or that may be  
13 modifiable (Khera et al. 2019). These complications question the ethicality of classifying  
14 mortality risks based on genetic test results. Overall, we encourage policymakers, the insurance  
15 industry, and other stakeholders to monitor this development closely and to have a scientifically  
16 informed discussion about the potential consequences of determining premiums or rejections  
17 based on genetic information on the one hand and adverse selection on the other.

18 Our results should be considered in light of a few limitations. First, it is likely that mortality  
19 selection has led to an underestimation of the current performance of polygenic scores. This  
20 would have foremost affected the scores for conditions that manifest at younger age. For  
21 example, in contrast to our expectations, we did not find an association with the score for  
22 coronary artery disease, which is a major cause of NCDs (Lloyd-Jones et al. 2006). Another  
23 important limitation, which is endemic to the GWAS literature (Clyde 2019; Mills and Rahal  
24 2019), is that we did not study individuals of non-European ancestry. Thus, we do not know  
25 whether our findings generalize to other ancestries (Martin et al. 2019, 2017). Unfortunately,  
26 it will take many years before we can thoroughly answer that question. Lastly, we acknowledge  
27 that the medical conditions ascertained in the HRS are based on self-reports and lack  
28 specificity, and it could be that their true impact on survival is understated in our analyses.  
29 Future studies with access to richer medical data will have to determine more precisely how  
30 much information polygenic scores can add above and beyond various biomarkers for disease  
31 and already acquired medical conditions.

32 Our results bear on the ongoing debate on whether and how to regulate the commercialization  
33 of genetic health information (Allyse et al. 2018; Van Hellemond, Hendriks, and Breuning

1 2011; Howard and Borry 2012; Kricka et al. 2011; Moscarello et al. 2019; Badalato,  
2 Kalokairinou, and Borry 2017). Many companies sell genetic tests with limited guidance and  
3 lengthy disclaimers, leaving their customers puzzled or confused (Nelson, Bowen, and  
4 Fullerton 2019; Wang et al. 2018). For example, it could be financially detrimental for the  
5 dependents of a life insurance policy if the policy holder voluntarily terminates their policy out  
6 of a false belief of low genetic risk. Therefore, we agree with others who call for more extensive  
7 consumer protection in this market (Schleit, Naylor, and Hisama 2019). Overall, more research  
8 is needed to determine how vulnerable types of consumers, for example, those with particularly  
9 high genetic risk or those with weak genetic literacy, react after exploring their DNA for health  
10 information. In particular, genetic tests with low accuracy are easy to misinterpret (Schleit,  
11 Naylor, and Hisama 2019). Thus, for now, we think that advertisement of disease and longevity  
12 predictions is ethically questionable at many levels and should be done only with great care,  
13 though the appropriateness of such services of course depends on how they are marketed and  
14 how the results are presented. However, at this moment, many genetic testing services hide  
15 behind extensive disclaimers to void them of responsibility, which could be considered a  
16 questionable practice (Schleit, Naylor, and Hisama 2019).

17 Therefore, as a policy recommendation, we encourage regulatory authorities to consider  
18 prognostic genetic testing for disease and longevity to be a form of genetic counseling. As such,  
19 we would consider it reasonable to limit the practice to licensed or accredited institutions, be  
20 they public or private. However, standards for genetic counseling are still maturing globally  
21 (Ormond et al. 2018; Abacan et al. 2019), and until regulatory measures are taken and an  
22 industry standard has been established, it is likely that appropriate consumer protection will lag  
23 behind technological developments. At the same time, since many people appear eager to  
24 purchase genetic health information, we consider it undesirable to completely restrict an  
25 individual persons' right to explore their DNA, with or without the assistance of a certified  
26 counselor. Additionally, the borderless nature of genetic testing, where consumers can send  
27 their genetic data to services located in different jurisdictions, makes it practically impossible  
28 to effectively regulate this market at only the national level. Thus, appropriate regulation of  
29 consumer genetics will require international agreements to be effective.

30 In conclusion, the estimates presented here clearly show the relevance of polygenic scores in  
31 the context of insurance. However, much research is required before it can be determined which  
32 polygenic scores may potentially meet the criteria for evidence-based underwriting and before  
33 accurate and fair premiums could be developed. Ultimately, policymakers and regulatory

1 agencies will have to strike a difficult balance between keeping private insurance fair and viable  
2 on the one hand while ensuring satisfactory consumer protection against genetic discrimination  
3 and privacy violations on the other. In the meantime, depending on the jurisdiction, we see a  
4 tangible risk of both genetic discrimination and informational advantage on the consumer side,  
5 which could lead to adverse selection.

## 1 **5 Author contributions**

2 This study was conceived by R.K.L. and designed by R.K.L together with P.D.K. P.D.K  
3 oversaw and supervised the study. The preregistered analysis plan was written by R.K.L. with  
4 critical input by P.D.K. R.K.L performed the analyses. R.K.L. and P.D.K together interpreted  
5 the results. R.K.L wrote the manuscript with critical input from P.D.K. R.K.L. produced the  
6 tables and figures.

## 7 **6 Acknowledgments**

8 The research was approved by the Research Ethics Review Board (RERB) at the School of  
9 Business and Economics (SBE) of Vrije Universiteit Amsterdam (20180927.1.pkr730). We  
10 gratefully acknowledge Netspar for financially supporting this research project with a topicality  
11 grant (BD2018.01) and thank Bas Werker and Anja de Waegenare for their valuable feedback  
12 on the research questions, study design, and draft manuscript. We are thankful to Casper Burik  
13 for constructing the genetic PCs and Aysu Okbay for a providing a meta-analysis of educational  
14 attainment that excluded the Health and Retirement Study (HRS). This work was carried out  
15 on the Dutch national e-infrastructure (grant 17148) with support of the SURF Cooperative.  
16 Philipp Koellinger was financially supported by an ERC Consolidator Grant (647648 EdGe).  
17 HRS is supported by the National Institute on Aging (NIA U01AG009740). The genotyping  
18 was funded separately by the National Institute on Aging (RC2 AG036495, RC4 AG039029).  
19 Genotyping was conducted by the NIH Center for Inherited Disease Research (CIDR) at Johns  
20 Hopkins University in Baltimore, Maryland. Genotyping quality control and final preparation  
21 of the data were performed by the Genetics Coordinating Center at the University of  
22 Washington in Seattle, Washington. Genotype data can be accessed via the database of  
23 Genotypes and Phenotypes (dbGaP, <http://www.ncbi.nlm.nih.gov/gap>, accession number  
24 phs000428.v2.p2). Researchers who wish to link genetic data with other HRS measures that  
25 are not in dbGaP, such as educational attainment, must apply to the HRS for permission. See  
26 the HRS website (<http://hrsonline.isr.umich.edu/gwas>) for details.

## 1 7 References

- 2 Abacan, MaryAnn, Lamia Alsubaie, Kristine Barlow-Stewart, Beppy Caanen, Christophe  
3 Cordier, Eliza Courtney, Emeline Davoine, et al. 2019. "The Global State of the Genetic  
4 Counseling Profession." *European Journal of Human Genetics : EJHG* 27 (2): 183–97.  
5 <https://doi.org/10.1038/s41431-018-0252-x>.
- 6 Abbott, Liam, Anttila Verner, Krishna Aragam, Alex Baumann, Jon Bloom, Sam Bryant,  
7 Claire Churchhouse, et al. 2017. "RAPID GWAS OF THOUSANDS OF  
8 PHENOTYPES FOR 337,000 SAMPLES IN THE UK BIOBANK." Nealelab.Is. 2017.  
9 [http://www.nealelab.is/blog/2017/7/19/rapid-gwas-of-thousands-of-phenotypes-for-](http://www.nealelab.is/blog/2017/7/19/rapid-gwas-of-thousands-of-phenotypes-for-337000-samples-in-the-uk-biobank)  
10 [337000-samples-in-the-uk-biobank](http://www.nealelab.is/blog/2017/7/19/rapid-gwas-of-thousands-of-phenotypes-for-337000-samples-in-the-uk-biobank).
- 11 Abraham, Gad, Rainer Malik, Ekaterina Yonova-Doing, Agus Salim, Tingting Wang, John  
12 Danesh, Adam S Butterworth, Joanna M M Howson, Michael Inouye, and Martin  
13 Dichgans. 2019. "Genomic Risk Score Offers Predictive Performance Comparable to  
14 Clinical Risk Factors for Ischaemic Stroke." *Nature Communications* 10 (1): 5819.  
15 <https://doi.org/10.1038/s41467-019-13848-1>.
- 16 Aktan-Collan, K, A Haukkala, and H Kääriäinen. 2001. "Life and Health Insurance  
17 Behaviour of Individuals Having Undergone a Predictive Genetic Testing Programme  
18 for Hereditary Non-Polyposis Colorectal Cancer." *Community Genetics* 4 (4): 219–24.  
19 <https://doi.org/10.1159/000064196>.
- 20 Allyse, Megan A, David H Robinson, Matthew J Ferber, and Richard R Sharp. 2018. "Direct-  
21 to-Consumer Testing 2.0: Emerging Models of Direct-to-Consumer Genetic Testing."  
22 *Mayo Clinic Proceedings* 93 (1): 113–20. <https://doi.org/10.1016/j.mayocp.2017.11.001>.
- 23 Altshuler, David M., Richard A. Gibbs, Leena Peltonen, David M. Altshuler, Richard A.  
24 Gibbs, Leena Peltonen, Emmanouil Dermitzakis, et al. 2010. "Integrating Common and  
25 Rare Genetic Variation in Diverse Human Populations." *Nature* 467 (7311): 52–58.  
26 <https://doi.org/10.1038/nature09298>.
- 27 Armstrong, Katrina, Barbara Weber, Genevieve FitzGerald, John C Hershey, Mark V Pauly,  
28 Jean Lemaire, Krupa Subramanian, and David A Asch. 2003. "Life Insurance and Breast  
29 Cancer Risk Assessment: Adverse Selection, Genetic Testing Decisions, and  
30 Discrimination." *American Journal of Medical Genetics Part A* 120A (3): 359–64.  
31 <https://doi.org/10.1002/ajmg.a.20025>.
- 32 Auton, Adam, Gonçalo R. Abecasis, David M. Altshuler, Richard M. Durbin, Gonçalo R.  
33 Abecasis, David R. Bentley, Aravinda Chakravarti, et al. 2015. "A Global Reference for  
34 Human Genetic Variation." *Nature* 526 (7571): 68–74.  
35 <https://doi.org/10.1038/nature15393>.
- 36 Badalato, Lauren, Louiza Kalokairinou, and Pascal Borry. 2017. "Third Party Interpretation  
37 of Raw Genetic Data: An Ethical Exploration." *European Journal Of Human Genetics*  
38 25 (August): 1189. <https://doi.org/10.1038/ejhg.2017.126>.
- 39 Bloom, D.E., E.T. Cafiero, E. Jané-Llopis, S. Abrahams-Gessel, L.R. Bloom, S. Fathima,  
40 A.B. Feigl, et al. 2011. "The Global Economic Burden of Non-Communicable  
41 Diseases." Geneva: World Economic Forum.
- 42 Borry, Pascal, Rachel E. Van Hellemond, Dominique Sprumont, Camilla Fittipaldi Duarte  
43 Jales, Emmanuelle Rial-Sebbag, Tade Matthias Spranger, Liam Curren, Jane Kaye,  
44 Herman Nys, and Heidi Howard. 2012. "Legislation on Direct-to-Consumer Genetic  
45 Testing in Seven European Countries." *European Journal of Human Genetics* 20 (7):  
46 715–21. <https://doi.org/10.1038/ejhg.2011.278>.
- 47 Bradburn, M J, T G Clark, S B Love, and D G Altman. 2003a. "Survival Analysis Part II:  
48 Multivariate Data Analysis – an Introduction to Concepts and Methods." *British Journal*  
49 *Of Cancer* 89 (July): 431. <https://doi.org/10.1038/sj.bjc.6601119>.



- 1 ———. 2003b. “Survival Analysis Part III: Multivariate Data Analysis – Choosing a Model  
2 and Assessing Its Adequacy and Fit.” *British Journal Of Cancer* 89 (August): 605.  
3 <https://doi.org/10.1038/sj.bjc.6601120>.
- 4 Brooks-Wilson, Angela R. 2013. “Genetics of Healthy Aging and Longevity.” *Human*  
5 *Genetics* 132 (12): 1323–38. <https://doi.org/10.1007/s00439-013-1342-z>.
- 6 Brown, Robert L, and Patricia Scahill. 2010. “Issues in the Issuance of Enhanced Annuities.”  
7 265. Social and Economic Dimensions of an Aging Population (SEDAP) Research  
8 Papers. <https://econpapers.repec.org/RePEc:mcm:sedapp:265>.
- 9 Bulik-Sullivan, Brendan K, Hilary K Finucane, Verner Anttila, Alexander Gusev, Felix R  
10 Day, ReproGen Consortium, Psychiatric Genomics Consortium, et al. 2015. “An Atlas  
11 of Genetic Correlations across Human Diseases and Traits.” *Nature Genetics* 47 (11):  
12 1236–1241. <https://doi.org/10.1101/014498>.
- 13 Bulik-Sullivan, Brendan K, Po-Ru Loh, Hilary K Finucane, Stephan Ripke, Jian Yang, Nick  
14 Patterson, Mark J Daly, Alkes L Price, and Benjamin M Neale. 2015. “LD Score  
15 Regression Distinguishes Confounding from Polygenicity in Genome-Wide Association  
16 Studies.” *Nature Genetics* 47 (3): 291–95. <https://doi.org/10.1038/ng.3211>.
- 17 Buniello, Annalisa, Jacqueline A L MacArthur, Maria Cerezo, Laura W Harris, James  
18 Hayhurst, Cinzia Malangone, Aoife McMahon, et al. 2018. “The NHGRI-EBI GWAS  
19 Catalog of Published Genome-Wide Association Studies, Targeted Arrays and Summary  
20 Statistics 2019.” *Nucleic Acids Research* 47 (D1): D1005–12.  
21 <https://doi.org/10.1093/nar/gky1120>.
- 22 Carver, Rebecca Bruu, Jérémy Castéra, Niklas Gericke, Neima Alice Menezes Evangelista,  
23 and Charbel N El-Hani. 2017. “Young Adults’ Belief in Genetic Determinism, and  
24 Knowledge and Attitudes towards Modern Genetics and Genomics: The PUGGS  
25 Questionnaire.” *PLOS ONE* 12 (1): e0169808.  
26 <https://doi.org/10.1371/journal.pone.0169808>.
- 27 Chang, Christopher C, Carson C Chow, Laurent CAM Tellier, Shashaank Vattikuti, Shaun M  
28 Purcell, and James J Lee. 2015. “Second-Generation PLINK: Rising to the Challenge of  
29 Larger and Richer Datasets.” *GigaScience* 4 (1): 7. <https://doi.org/10.1186/s13742-015-0047-8>.
- 30  
31 Chapman, Robert, Maxim Likhanov, Fatos Selita, Ilya Zakharov, Emily Smith-Woolley, and  
32 Yulia Kavas. 2019. “New Literacy Challenge for the Twenty-First Century: Genetic  
33 Knowledge Is Poor Even among Well Educated.” *Journal of Community Genetics* 10  
34 (1): 73–84. <https://doi.org/10.1007/s12687-018-0363-7>.
- 35 Choi, Shing Wan, and Paul F O’Reilly. 2019. “PRSice-2: Polygenic Risk Score Software for  
36 Biobank-Scale Data.” *GigaScience* 8 (7). <https://doi.org/10.1093/gigascience/giz082>.
- 37 Clark, T G, M J Bradburn, S B Love, and D G Altman. 2003. “Survival Analysis Part I: Basic  
38 Concepts and First Analyses.” *British Journal Of Cancer* 89 (July): 232.  
39 <https://doi.org/10.1038/sj.bjc.6601118>.
- 40 Clyde, Dorothy. 2019. “Making the Case for More Inclusive GWAS.” *Nature Reviews*  
41 *Genetics* 20: 500–501. <https://doi.org/10.1038/s41576-019-0160-0>.
- 42 Cornell, Portia Y, David C Grabowski, Marc Cohen, Xiaomei Shi, and David G Stevenson.  
43 2016. “Medical Underwriting In Long-Term Care Insurance: Market Conditions Limit  
44 Options For Higher-Risk Consumers.” *Health Affairs* 35 (8): 1494–1503.  
45 <https://doi.org/10.1377/hlthaff.2015.1133>.
- 46 Daar, Abdallah S, Peter A Singer, Leah Persad, Stig K Pramming, R Matthews, Robert  
47 Beaglehole, Leszek K Borysiewicz, et al. 2007. “Grand Challenges in Chronic Non-  
48 Communicable Diseases.” *Nature* 450 (November): 20–22.  
49 <https://doi.org/https://doi.org/10.1038/450494a>.
- 50 Daetwyler, Hans D., Beatriz Villanueva, and John a. Woolliams. 2008. “Accuracy of

- 1 Predicting the Genetic Risk of Disease Using a Genome-Wide Approach.” *PLoS ONE* 3  
2 (10). <https://doi.org/10.1371/journal.pone.0003395>.
- 3 Dagenais, Gilles R, Darryl P Leong, Sumathy Rangarajan, Fernando Lanas, Patricio Lopez-  
4 Jaramillo, Rajeev Gupta, Rafael Diaz, et al. 2019. “Variations in Common Diseases,  
5 Hospital Admissions, and Deaths in Middle-Aged Adults in 21 Countries from Five  
6 Continents (PURE): A Prospective Cohort Study.” *The Lancet*, September.  
7 [https://doi.org/10.1016/S0140-6736\(19\)32007-0](https://doi.org/10.1016/S0140-6736(19)32007-0).
- 8 Dionne, Georges, ed. 2013. *Handbook of Insurance*. Second Edi. New York: Springer  
9 Science+Business Media. [https://doi.org/10.1007/978-1-4614-0155-1\\_26](https://doi.org/10.1007/978-1-4614-0155-1_26).
- 10 Domingue, Benjamin W, Daniel W Belsky, Amal Harrati, Dalton Conley, David R Weir, and  
11 Jason D Boardman. 2017. “Mortality Selection in a Genetic Sample and Implications for  
12 Association Studies.” *International Journal of Epidemiology* 46 (4): 1285–94.  
13 <http://dx.doi.org/10.1093/ije/dyx041>.
- 14 Dudbridge, Frank. 2013. “Power and Predictive Accuracy of Polygenic Risk Scores.” *PLoS*  
15 *Genetics* 9 (3): e1003348. <https://doi.org/10.1371/journal.pgen.1003348>.
- 16 ———. 2016. “Polygenic Epidemiology.” *Genetic Epidemiology* 40 (4): 268–72.  
17 <https://doi.org/10.1002/gepi.21966>.
- 18 Duncan, L, H Shen, B Gelaye, J Meijssen, K Ressler, M Feldman, R Peterson, and B  
19 Domingue. 2019. “Analysis of Polygenic Risk Score Usage and Performance in Diverse  
20 Human Populations.” *Nature Communications* 10 (1): 3328.  
21 <https://doi.org/10.1038/s41467-019-11112-0>.
- 22 Escott-Price, Valentina, Maryam Shoai, Richard Pither, Julie Williams, and John Hardy.  
23 2017. “Polygenic Score Prediction Captures Nearly All Common Genetic Risk for  
24 Alzheimer’s Disease.” *Neurobiology of Aging* 49: 214.  
25 <https://doi.org/10.1016/j.neurobiolaging.2016.07.018>.
- 26 Evangelou, Evangelos, Helen R Warren, David Mosen-Ansorena, Borbala Mifsud, Raha  
27 Pazoki, He Gao, Georgios Ntritsos, et al. 2018. “Genetic Analysis of over 1 Million  
28 People Identifies 535 New Loci Associated with Blood Pressure Traits.” *Nature*  
29 *Genetics* 50 (10): 1412–25. <https://doi.org/10.1038/s41588-018-0205-x>.
- 30 Ganna, Andrea, Fernando Rivadeneira, Albert Hofman, André G. Uitterlinden, Patrik K.E.  
31 Magnusson, Nancy L. Pedersen, Erik Ingelsson, and Henning Tiemeier. 2013. “Genetic  
32 Determinants of Mortality. Can Findings from Genome-Wide Association Studies  
33 Explain Variation in Human Mortality?” *Human Genetics* 132 (5): 553–61.  
34 <https://doi.org/10.1007/s00439-013-1267-6>.
- 35 Gericke, Niklas, Rebecca Carver, Jérémy Castéra, Neima Alice Menezes Evangelista, Claire  
36 Coiffard Marre, and Charbel N El-Hani. 2017. “Exploring Relationships Among Belief  
37 in Genetic Determinism, Genetics Knowledge, and Social Factors.” *Science &*  
38 *Education* 26 (10): 1223–59. <https://doi.org/10.1007/s11191-017-9950-y>.
- 39 Glenzer, Franca, and Bertrand Achou. 2019. “Annuities, Long-Term Care Insurance, and  
40 Insurer Solvency.” *The Geneva Papers on Risk and Insurance - Issues and Practice* 44  
41 (2): 252–76. <https://doi.org/10.1057/s41288-019-00125-x>.
- 42 Godard, Béatrice, Leo ten Kate, Gerry Evers-Kiebooms, and Ségolène Aymé. 2003.  
43 “Population Genetic Screening Programmes: Principles, Techniques, Practices, and  
44 Policies.” *European Journal of Human Genetics* 11 (SUPPL. 2): 49–87.  
45 <https://doi.org/10.1038/sj.ejhg.5201113>.
- 46 Hamer, D, and L Sirota. 2000. “Beware the Chopsticks Gene.” *Molecular Psychiatry* 5 (1):  
47 11–13. <https://doi.org/10.1038/sj.mp.4000662>.
- 48 Hamermesh, Daniel S. 1985. “Expectations, Life Expectancy, and Economic Behavior.” *The*  
49 *Quarterly Journal of Economics* 100 (2): 389–408. <https://doi.org/10.2307/1885388>.
- 50 Harper, PS. 1993. “Insurance and Genetic Testing.” *Lancet* 341: 224–27.

- 1 Harrell Jr, Frank E, Robert M Califf, David B Pryor, Kerry L Lee, and Robert A Rosati.  
2 1982. "Evaluating the Yield of Medical Tests." *JAMA* 247 (18): 2543–46.  
3 <https://doi.org/10.1001/jama.1982.03320430047030>.
- 4 Harris, Timothy, and Aaron Yelowitz. 2014. "Is There Adverse Selection in the Life  
5 Insurance Market? Evidence from a Representative Sample of Purchasers." *Economics*  
6 *Letters* 124 (3): 520–22. <https://doi.org/10.1016/j.econlet.2014.07.029>.
- 7 Harst, Pim van der, and Niek Verweij. 2018. "Identification of 64 Novel Genetic Loci  
8 Provides an Expanded View on the Genetic Architecture of Coronary Artery Disease."  
9 *Circulation Research* 122 (3): 433–43.  
10 <https://doi.org/10.1161/CIRCRESAHA.117.312086>.
- 11 Hellemond, R E Van, AC Hendriks, and MH Breuning. 2011. "Regulating the Use of  
12 Genetic Tests: Is Dutch Law an Example for Other Countries with Regard to DTC  
13 Genetic Testing." *Amsterdam Law Forum*. <https://doi.org/10.3366/ajicl.2011.0005>.
- 14 Hendren, Nathaniel. 2013. "Private Information and Insurance Rejections." *Econometrica* 81  
15 (5): 1713–62. <https://doi.org/10.3982/ECTA10931>.
- 16 Hodgson, Reece, and Gary Haddow. 2016. "Self-Diagnosis – Does the Consumer Have the  
17 Advantage Over the Insurer?" Georgia: Munich Re.
- 18 Hosmer, David W Jr., and Stanley Lemeshow. 1998. *Applied Survival Analysis: Regression*  
19 *Modeling of Time to Event Data*. New York: Wiley & Sons, Ltd.
- 20 Howard, David M, Mark J Adams, Toni-Kim Clarke, Jonathan D Hafferty, Jude Gibson,  
21 Masoud Shirali, Jonathan R I Coleman, et al. 2019. "Genome-Wide Meta-Analysis of  
22 Depression Identifies 102 Independent Variants and Highlights the Importance of the  
23 Prefrontal Brain Regions." *Nature Neuroscience*. [https://doi.org/10.1038/s41593-018-](https://doi.org/10.1038/s41593-018-0326-7)  
24 [0326-7](https://doi.org/10.1038/s41593-018-0326-7).
- 25 Howard, Heidi Carmen, and Pascal Borry. 2012. "Europe and Direct-to-Consumer Genetic  
26 Tests." *Nature Reviews Genetics* 13 (2): 146. <https://doi.org/10.1038/nrg3073-c1>.
- 27 Jan, Stephen, Tracey-Lea Laba, Beverley M Essue, Adrian Gheorghe, Janani Muhunthan,  
28 Michael Engelgau, Ajay Mahal, et al. 2018. "Action to Address the Household  
29 Economic Burden of Non-Communicable Diseases." *The Lancet* 391 (10134): 2047–58.  
30 [https://doi.org/10.1016/S0140-6736\(18\)30323-4](https://doi.org/10.1016/S0140-6736(18)30323-4).
- 31 Jansen, Iris E, Jeanne E Savage, Kyoko Watanabe, Julien Bryois, Dylan M Williams, Stacy  
32 Steinberg, Julia Sealock, et al. 2019. "Genome-Wide Meta-Analysis Identifies New Loci  
33 and Functional Pathways Influencing Alzheimer's Disease Risk." *Nature Genetics*.  
34 <https://doi.org/10.1038/s41588-018-0311-9>.
- 35 Jansen, Philip R, Kyoko Watanabe, Sven Stringer, Nathan Skene, Julien Bryois, Anke R  
36 Hammerschlag, Christiaan A de Leeuw, et al. 2019. "Genome-Wide Analysis of  
37 Insomnia in 1,331,010 Individuals Identifies New Risk Loci and Functional Pathways."  
38 *Nature Genetics*. <https://doi.org/10.1038/s41588-018-0333-3>.
- 39 Joly, Yann, Hilary Burton, Bartha Maria Knoppers, Ida Ngueng Feze, Tom Dent, Nora  
40 Pashayan, Susmita Chowdhury, et al. 2014. "Life Insurance: Genomic Stratification and  
41 Risk Classification." *European Journal of Human Genetics* 22 (5): 575–79.  
42 <https://doi.org/10.1038/ejhg.2013.228>.
- 43 Joly, Yann, Ida Ngueng Feze, and Jacques Simard. 2013. "Genetic Discrimination and Life  
44 Insurance: A Systematic Review of the Evidence." *BMC Medicine* 11 (1): 25.  
45 [http://www.biomedcentral.com/1741-](http://www.biomedcentral.com/1741-7015/11/25)  
46 [7015/11/25](http://www.biomedcentral.com/1741-7015/11/25)  
47 [http://www.biomedcentral.com/1741-](http://www.biomedcentral.com/1741-7015/11/25)  
48 [7015/11/25%5Cnhttp://ovidsp.ovid.com/ovidweb.cgi?T=JS&PAGE=reference&D=emed11&NEWS=N&AN=2013192007](http://www.biomedcentral.com/1741-7015/11/25).
- 49 Joshi, Peter K., Nicola Pirastu, Katherine A. Kentistou, Krista Fischer, Edith Hofer,  
50 Katharina E. Schraut, David W. Clark, et al. 2017. "Genome-Wide Meta-Analysis  
Associates HLA-DQA1/DRB1 and LPA and Lifestyle Factors with Human Longevity."

- 1 *Nature Communications* 8 (1): 1–13. <https://doi.org/10.1038/s41467-017-00934-5>.
- 2 Kaplan, E L, and Paul Meier. 1958. “Nonparametric Estimation from Incomplete  
3 Observations.” *Journal of the American Statistical Association* 53 (282): 457–81.  
4 <https://doi.org/10.2307/2281868>.
- 5 Kaplan, W, VJ Wirtz, A Mantel-Teeuwisse, P Stolk, B Duthey, and R Laining. 2013.  
6 “Priority Medicines for Europe and the World 2013 Update.” Geneva.
- 7 Karlsson Linnér, Richard, Pietro Biroli, Edward Kong, S Fleur W Meddens, Robbee Wedow,  
8 Mark Alan Fontana, Maël Lebreton, et al. 2019. “Genome-Wide Association Analyses  
9 of Risk Tolerance and Risky Behaviors in over 1 Million Individuals Identify Hundreds  
10 of Loci and Shared Genetic Influences.” *Nature Genetics* 51: 404–413.  
11 <https://doi.org/10.1038/s41588-018-0309-3>.
- 12 Keogh, Louise, Heather Niven, Alison Rutstein, Louisa Flander, Clara Gaff, and Mark  
13 Jenkins. 2017. “Choosing Not to Undergo Predictive Genetic Testing for Hereditary  
14 Colorectal Cancer Syndromes: Expanding Our Understanding of Decliners and  
15 Declining.” *Journal of Behavioral Medicine* 40 (4): 583–94. [http://10.0.3.239/s10865-](http://10.0.3.239/s10865-016-9820-0)  
16 [016-9820-0](http://10.0.3.239/s10865-016-9820-0).
- 17 Khan, Razib, and David Mittelman. 2018. “Consumer Genomics Will Change Your Life,  
18 Whether You Get Tested or Not.” *Genome Biology* 19 (1): 120.  
19 <https://doi.org/10.1186/s13059-018-1506-1>.
- 20 Khera, Amit V., Mark Chaffin, Krishna G. Aragam, Mary E. Haas, Carolina Roselli, Seung  
21 Hoan Choi, Pradeep Natarajan, et al. 2018. “Genome-Wide Polygenic Scores for  
22 Common Diseases Identify Individuals with Risk Equivalent to Monogenic Mutations.”  
23 *Nature Genetics*. <https://doi.org/10.1038/s41588-018-0183-z>.
- 24 Khera, Amit V, Mark Chaffin, Kaitlin H Wade, Sohail Zahid, Joseph Brancale, Rui Xia,  
25 Marina Distefano, et al. 2019. “Polygenic Prediction of Weight and Obesity Trajectories  
26 from Birth to Adulthood.” *Cell* 177 (3): 587-596.e9.  
27 <https://doi.org/https://doi.org/10.1016/j.cell.2019.03.028>.
- 28 Klein, John P, and Melvin L Moeschberger. 2003. *Survival Analysis: Techniques for*  
29 *Censored and Truncated Data*. Edited by K Dietz, M Gail, K Krickeberg, J Samet, and  
30 A Tsiatis. Second Edi. Statistics for Biology and Health. New York: Springer.  
31 <http://public.ebib.com/choice/publicfullrecord.aspx?p=231394>.
- 32 Klitzman, Robert, Paul S Appelbaum, and Wendy K Chung. 2014. “Should Life Insurers  
33 Have Access to Genetic Test Results?” *JAMA* 312 (18): 1855–56.  
34 <https://doi.org/10.1001/jama.2014.13301>.
- 35 Krapohl, E, H Patel, S Newhouse, C J Curtis, S von Stumm, P S Dale, D Zabaneh, G Breen,  
36 P F O’Reilly, and R Plomin. 2017. “Multi-Polygenic Score Approach to Trait  
37 Prediction.” *Molecular Psychiatry*, no. October 2016: 1–7.  
38 <https://doi.org/10.1038/mp.2017.163>.
- 39 Kricka, Larry J., Paolo Fortina, Yuan Mai, and George P. Patrinos. 2011. “Ethics Watch:  
40 Direct-Access Genetic Testing: The View from Europe.” *Nature Reviews Genetics* 12  
41 (10): 670. <https://doi.org/10.1038/nrg3073>.
- 42 Kuchenbaecker, Karoline B, Lesley McGuffog, Daniel Barrowdale, Andrew Lee, Penny  
43 Soucy, Joe Dennis, Susan M Domchek, et al. 2017. “Evaluation of Polygenic Risk  
44 Scores for Breast and Ovarian Cancer Risk Prediction in BRCA1 and BRCA2 Mutation  
45 Carriers.” *JNCI: Journal of the National Cancer Institute* 109 (7).  
46 <https://doi.org/10.1093/jnci/djw302>.
- 47 Lea, D H, K A Kaphingst, D Bowen, I Lipkus, and D W Hadley. 2011. “Communicating  
48 Genetic and Genomic Information: Health Literacy and Numeracy Considerations.”  
49 *Public Health Genomics* 14 (4–5): 279–89. <https://doi.org/10.1159/000294191>.
- 50 Lee, James J., Robbee Wedow, Aysu Okbay, Edward Kong, Omeed Maghziyan, Meghan

- 1 Zacher, Tuan Anh Nguyen-Viet, et al. 2018. “Gene Discovery and Polygenic Prediction  
2 from a Genome-Wide Association Study of Educational Attainment in 1.1 Million  
3 Individuals.” *Nature Genetics* 50 (8): 1112–21. [https://doi.org/10.1038/s41588-018-](https://doi.org/10.1038/s41588-018-0147-3)  
4 0147-3.
- 5 Lee, James J, Matt McGue, William G Iacono, and Carson C Chow. 2018. “The Accuracy of  
6 LD Score Regression as an Estimator of Confounding and Genetic Correlations in  
7 Genome-wide Association Studies.” *Genetic Epidemiology* 42 (8): 783–95.  
8 <https://doi.org/10.1002/gepi.22161>.
- 9 Lloyd-Jones, Donald M., Eric P. Leip, Martin G. Larson, Ralph B. D’Agostino, Alexa Beiser,  
10 Peter W.F. Wilson, Philip A. Wolf, and Daniel Levy. 2006. “Prediction of Lifetime Risk  
11 for Cardiovascular Disease by Risk Factor Burden at 50 Years of Age.” *Circulation* 113  
12 (6): 791–98. <https://doi.org/10.1161/CIRCULATIONAHA.105.548206>.
- 13 MacArthur, Jacqueline, Emily Bowler, Maria Cerezo, Laurent Gil, Peggy Hall, Emma  
14 Hastings, Heather Junkins, et al. 2017. “The New NHGRI-EBI Catalog of Published  
15 Genome-Wide Association Studies (GWAS Catalog).” *Nucleic Acids Research* 45 (D1):  
16 D896–901. <https://doi.org/10.1093/nar/gkw1133>.
- 17 Mahajan, Anubha, Daniel Taliun, Matthias Thurner, Neil R Robertson, Jason M Torres, N  
18 William Rayner, Anthony J Payne, et al. 2018. “Fine-Mapping Type 2 Diabetes Loci to  
19 Single-Variant Resolution Using High-Density Imputation and Islet-Specific Epigenome  
20 Maps.” *Nature Genetics*. <https://doi.org/10.1038/s41588-018-0241-6>.
- 21 Mailman, Matthew D, Michael Feolo, Yumi Jin, Masato Kimura, Kimberly Tryka, Rinat  
22 Bagoutdinov, Luning Hao, et al. 2007. “The NCBI DbGaP Database of Genotypes and  
23 Phenotypes.” *Nature Genetics* 39 (October): 1181. <https://doi.org/10.1038/ng1007-1181>.
- 24 Malik, Rainer, Ganesh Chauhan, Matthew Traylor, Muralidharan Sargurupremraj, Yukinori  
25 Okada, Aniket Mishra, Loes Rutten-Jacobs, et al. 2018. “Multiancestry Genome-Wide  
26 Association Study of 520,000 Subjects Identifies 32 Loci Associated with Stroke and  
27 Stroke Subtypes.” *Nature Genetics* 50 (4): 524–37. [https://doi.org/10.1038/s41588-018-](https://doi.org/10.1038/s41588-018-0058-3)  
28 0058-3.
- 29 Marioni, Riccardo E, Stuart J Ritchie, Peter K Joshi, Saskia P Hagenaars, Aysu Okbay, Krista  
30 Fischer, Mark J Adams, et al. 2016. “Genetic Variants Linked to Education Predict  
31 Longevity.” *Proceedings of the National Academy of Sciences* .  
32 <https://doi.org/10.1073/pnas.1605334113>.
- 33 Martin, Alicia R., Christopher R. Gignoux, Raymond K. Walters, Genevieve L. Wojcik,  
34 Benjamin M. Neale, Simon Gravel, Mark J. Daly, Carlos D. Bustamante, and Eimear E.  
35 Kenny. 2017. “Human Demographic History Impacts Genetic Risk Prediction across  
36 Diverse Populations.” *American Journal of Human Genetics* 100 (4): 635–49.  
37 <https://doi.org/10.1016/j.ajhg.2017.03.004>.
- 38 Martin, Alicia R, Masahiro Kanai, Yoichiro Kamatani, Yukinori Okada, Benjamin M Neale,  
39 and Mark J Daly. 2019. “Clinical Use of Current Polygenic Risk Scores May Exacerbate  
40 Health Disparities.” *Nature Genetics* 51 (4): 584–91. [https://doi.org/10.1038/s41588-](https://doi.org/10.1038/s41588-019-0379-x)  
41 019-0379-x.
- 42 Mavaddat, Nasim, Kyriaki Michailidou, Joe Dennis, Michael Lush, Laura Fachal, Andrew  
43 Lee, Jonathan P Tyrer, et al. 2019. “Polygenic Risk Scores for Prediction of Breast  
44 Cancer and Breast Cancer Subtypes.” *The American Journal of Human Genetics* 104  
45 (1): 21–34. <https://doi.org/10.1016/j.ajhg.2018.11.002>.
- 46 McCarthy, David, and Olivia S. Mitchell. 2010. “International Adverse Selection in Life  
47 Insurance and Annuities.” *Aging in Advanced Industrial States*, 119–35.  
48 [https://doi.org/10.1007/978-90-481-3553-0\\_6](https://doi.org/10.1007/978-90-481-3553-0_6).
- 49 McDaid, Aaron F, Peter K Joshi, Eleonora Porcu, Andrea Komljenovic, Hao Li, Vincenzo  
50 Sorrentino, Maria Litovchenko, et al. 2017. “Bayesian Association Scan Reveals Loci

- 1 Associated with Human Lifespan and Linked Biomarkers.” *Nature Communications* 8  
2 (July): 15842. <https://doi.org/10.1038/ncomms15842>.
- 3 Michailidou, Kyriaki, Sara Lindström, Joe Dennis, Jonathan Beesley, Shirley Hui, Siddhartha  
4 Kar, Audrey Lemaçon, et al. 2017. “Association Analysis Identifies 65 New Breast  
5 Cancer Risk Loci.” *Nature* 551 (October): 92. <https://doi.org/10.1038/nature24284>.
- 6 Mills, Melinda C, and Charles Rahal. 2019. “A Scientometric Review of Genome-Wide  
7 Association Studies.” *Communications Biology* 2 (1): 9. [https://doi.org/10.1038/s42003-](https://doi.org/10.1038/s42003-018-0261-x)  
8 018-0261-x.
- 9 Moore, Dirk F, ed. 2016. *Applied Survival Analysis Using R. Use R!* Cham, Switzerland:  
10 Springer. <https://doi.org/10.1007/978-3-319-31245-3>.
- 11 Moscarello, Tia, Brittney Murray, Chloe M Reuter, and Erin Demo. 2019. “Direct-to-  
12 Consumer Raw Genetic Data and Third-Party Interpretation Services: More Burden than  
13 Bargain?” *Genetics in Medicine* 21 (3): 539–41. [https://doi.org/10.1038/s41436-018-](https://doi.org/10.1038/s41436-018-0097-2)  
14 0097-2.
- 15 Nabholz, Christoph, and Kevin Somerville. 2011. “Fair Risk Assessment in Life & Health  
16 Insurance.” Zurich: Swiss Re.
- 17 Nabholz, Cristoph, and Florian Rechfeld. 2017. “Seeing the Future? How Genetic Testing  
18 Will Impact Life Insurance.” Zurich: Swiss Re.
- 19 Nelson, Sarah C, Deborah J Bowen, and Stephanie M Fullerton. 2019. “Third-Party Genetic  
20 Interpretation Tools: A Mixed-Methods Study of Consumer Motivation and Behavior.”  
21 *The American Journal of Human Genetics*.  
22 <https://doi.org/https://doi.org/10.1016/j.ajhg.2019.05.014>.
- 23 Newson, Ainsley J, Sam Ayres, Jackie Boyle, Michael T Gabbett, and Amy Nisselle. 2018.  
24 “Human Genetics Society of Australasia Position Statement: Genetic Testing and  
25 Personal Insurance Products in Australia.” *Twin Research and Human Genetics* 21 (6):  
26 533–37. [https://doi.org/DOI: 10.1017/thg.2018.60](https://doi.org/DOI:10.1017/thg.2018.60).
- 27 Nielsen, Jonas B., Rosa B. Thorolfsdottir, Lars G. Fritsche, Wei Zhou, Morten W. Skov,  
28 Sarah E. Graham, Todd J. Herron, et al. 2018. “Biobank-Driven Genomic Discovery  
29 Yields New Insight into Atrial Fibrillation Biology.” *Nature Genetics* 50 (9): 1234–39.  
30 <https://doi.org/10.1038/s41588-018-0171-3>.
- 31 Noone, AM, N Howlader, M Krapcho, D Miller, A Brest, M Yu, J Ruhl, et al. 2018. *SEER  
32 Cancer Statistics Review, 1975-2015, National Cancer Institute*. Edited by Cronin KA  
33 (eds). Noone AM, Howlader N, Krapcho M, Miller D, Brest A, Yu M, Ruhl J,  
34 Tatalovich Z, Mariotto A, Lewis DR, Chen HS, Feuer EJ. Bethesda, MD: American  
35 Cancer Society.
- 36 Ormond, Kelly E, Mercy Ygoña Laurino, Kristine Barlow-Stewart, Tina-Marié Wessels,  
37 Shelley Macaulay, Jehannine Austin, and Anna Middleton. 2018. “Genetic Counseling  
38 Globally: Where Are We Now?” *American Journal of Medical Genetics Part C:  
39 Seminars in Medical Genetics* 178 (1): 98–107. <https://doi.org/10.1002/ajmg.c.31607>.
- 40 Oster, Emily, Ira Shoulson, Kimberly Quaid, and E. Ray Dorsey. 2010. “Genetic Adverse  
41 Selection: Evidence from Long-Term Care Insurance and Huntington Disease.” *Journal  
42 of Public Economics* 94 (11–12): 1041–50.  
43 <https://doi.org/10.1016/j.jpubeco.2010.06.009>.
- 44 Pardiñas, Antonio F., Peter Holmans, Andrew J. Pocklington, Valentina Escott-Price,  
45 Stephan Ripke, Noa Carrera, Sophie E. Legge, et al. 2018. “Common Schizophrenia  
46 Alleles Are Enriched in Mutation-Intolerant Genes and in Regions under Strong  
47 Background Selection.” *Nature Genetics*. <https://doi.org/10.1038/s41588-018-0059-2>.
- 48 Pasaniuc, Bogdan, and Alkes L. Price. 2017. “Dissecting the Genetics of Complex Traits  
49 Using Summary Association Statistics.” *Nature Reviews Genetics* 18 (2): 117–27.  
50 <https://doi.org/10.1038/nrg.2016.142>.

- 1 Peter, Richard, Andreas Richter, and Paul Thistle. 2017. "Endogenous Information, Adverse  
2 Selection, and Prevention: Implications for Genetic Testing Policy." *Journal of Health*  
3 *Economics* 55: 95–107. <https://doi.org/10.1016/j.jhealeco.2017.06.010>.
- 4 Phillips, Kathryn A, Patricia A Deverka, Gillian W Hooker, and Michael P Douglas. 2018.  
5 "Genetic Test Availability And Spending: Where Are We Now? Where Are We  
6 Going?" *Health Affairs* 37 (5): 710–16.  
7 <https://doi.org/http://dx.doi.org/10.1377/hlthaff.2017.1427>.
- 8 Pilling, Luke C., Janice L. Atkinsm, Kirsty Bowman, Samuel E Jones, Jessica Tyrrell, Robin  
9 N. Beaumont, Katherine S. Ruth, et al. 2016. "Human Longevity Is Influenced by Many  
10 Genetic Variants: Evidence from 75,000 UK Biobank Participants." *Aging* 8 (3): 547–  
11 60. <https://doi.org/10.18632/aging.100930>.
- 12 Pilling, Luke C., Chia Ling Kuo, Kamil Sicinski, Jone Tamosauskaite, George A. Kuchel,  
13 Lorna W. Harries, Pamela Herd, Robert Wallace, Luigi Ferrucci, and David Melzer.  
14 2017. "Human Longevity: 25 Genetic Loci Associated in 389,166 UK Biobank  
15 Participants." *Aging* 9 (12): 2504–20. <https://doi.org/10.18632/aging.101334>.
- 16 Polderman, Tinca J C, Beben Benyamin, Christiaan a de Leeuw, Patrick F Sullivan, Arjen  
17 van Bochoven, Peter M Visscher, and Danielle Posthuma. 2015. "Meta-Analysis of the  
18 Heritability of Human Traits Based on Fifty Years of Twin Studies." *Nature Genetics* 47  
19 (7): 702–9. <https://doi.org/10.1038/ng.3285>.
- 20 Preacher, Kristopher J, Derek D Rucker, Robert C MacCallum, and W Alan Nicewander.  
21 2005. "Use of the Extreme Groups Approach: A Critical Reexamination and New  
22 Recommendations." *Psychological Methods* 10 (2): 178–92.  
23 <https://doi.org/10.1037/1082-989X.10.2.178>.
- 24 Price, Alkes L, Nick J Patterson, Robert M Plenge, Michael E Weinblatt, Nancy a Shadick,  
25 and David Reich. 2006. "Principal Components Analysis Corrects for Stratification in  
26 Genome-Wide Association Studies." *Nature Genetics* 38 (8): 904–9.  
27 <https://doi.org/10.1038/ng1847>.
- 28 Price, Alkes L, Noah A Zaitlen, David Reich, and Nick Patterson. 2010. "New Approaches to  
29 Population Stratification in Genome-Wide Association Studies." *Nature Reviews*  
30 *Genetics* 11 (June): 459. <https://doi.org/10.1038/nrg2813>.
- 31 Prince, Anya E R. 2019. "Comparative Perspectives: Regulating Insurer Use of Genetic  
32 Information." *European Journal of Human Genetics* 27 (3): 340–48.  
33 <https://doi.org/10.1038/s41431-018-0293-1>.
- 34 Rechfeld, Florian, Maurus Rischatsch, Tsutomu Nemoto, and Cristoph Nabholz. 2019. "Can  
35 Life Insurance Pass the Genetic Test?" Zurich: Swiss Re: Swiss Re.
- 36 Rothstein, Mark. 2004. *Genetics and Life Insurance: Medical Underwriting and Social*  
37 *Policy*. NV-1 onl. MIT Press.
- 38 Rothstein, Mark A. 2018. "Time to End the Use of Genetic Test Results in Life Insurance  
39 Underwriting." *The Journal of Law, Medicine & Ethics* 46 (3): 794–801.  
40 <https://doi.org/10.1177/1073110518804243>.
- 41 Royston, Patrick, and Douglas G Altman. 2013. "External Validation of a Cox Prognostic  
42 Model: Principles and Methods." *BMC Medical Research Methodology* 13 (March): 33.  
43 <https://doi.org/10.1186/1471-2288-13-33>.
- 44 Royston, Patrick, and Willi Sauerbrei. 2004. "A New Measure of Prognostic Separation in  
45 Survival Data." *Statistics in Medicine* 23 (5): 723–48. <https://doi.org/10.1002/sim.1621>.
- 46 Saunders, Gary, Michael Baudis, Regina Becker, Sergi Beltran, Christophe Bérout, Ewan  
47 Birney, Cath Brooksbank, et al. 2019. "Leveraging European Infrastructures to Access 1  
48 Million Human Genomes by 2022." *Nature Reviews Genetics*.  
49 <https://doi.org/10.1038/s41576-019-0156-9>.
- 50 Schleit, Jennifer, Lorraine V Naylor, and Fuki M Hisama. 2019. "First, Do No Harm: Direct-

- 1 to-Consumer Genetic Testing.” *Genetics in Medicine* 21 (2): 510–11.  
2 <https://doi.org/10.1038/s41436-018-0071-z>.
- 3 Schumacher, Fredrick R, Ali Amin Al Olama, Sonja I Berndt, Sara Benlloch, Mahbubl  
4 Ahmed, Edward J Saunders, Tokhir Dadaev, et al. 2018. “Association Analyses of More  
5 than 140,000 Men Identify 63 New Prostate Cancer Susceptibility Loci.” *Nature*  
6 *Genetics* 50 (7): 928–36. <https://doi.org/10.1038/s41588-018-0142-8>.
- 7 Shin, Su H, Dean R Lillard, and Jay Bhattacharya. 2019. “UNDERSTANDING THE  
8 CORRELATION BETWEEN ALZHEIMER’S DISEASE POLYGENIC RISK,  
9 WEALTH, AND THE COMPOSITION OF WEALTH HOLDINGS.” *NBER Working*  
10 *Paper Series*.
- 11 Sijbrands, Eric J G, Erik Tornij, and Sietske J Homsma. 2009. “Mortality Risk Prediction by  
12 an Insurance Company and Long-Term Follow-up of 62,000 Men.” *PloS One* 4 (5):  
13 e5457–e5457. <https://doi.org/10.1371/journal.pone.0005457>.
- 14 Sonnega, Amanda, Jessica D. Faul, Mary Beth Ofstedal, Kenneth M. Langa, John W.R.  
15 Phillips, and David R. Weir. 2014. “Cohort Profile: The Health and Retirement Study  
16 (HRS).” *International Journal of Epidemiology* 43 (2): 576–85.  
17 <https://doi.org/10.1093/ije/dyu067>.
- 18 Steinorth, Petra. 2012. “The Demand for Enhanced Annuities.” *Journal of Public Economics*  
19 96 (11): 973–80. <https://doi.org/https://doi.org/10.1016/j.jpubeco.2012.07.007>.
- 20 Strohmenger, R., and A. Wambach. 2000. “Adverse Selection and Categorical Discrimination  
21 in the Health Insurance Markets: The Effects of Genetic Tests.” *Journal of Health*  
22 *Economics* 19 (2): 197–218. [https://doi.org/10.1016/S0167-6296\(99\)00021-1](https://doi.org/10.1016/S0167-6296(99)00021-1).
- 23 Tam, Vivian, Nikunj Patel, Michelle Turcotte, Yohan Bossé, Guillaume Paré, and David  
24 Meyre. 2019. “Benefits and Limitations of Genome-Wide Association Studies.” *Nature*  
25 *Reviews Genetics*. <https://doi.org/10.1038/s41576-019-0127-1>.
- 26 Tandy-Connor, Stephany, Jenna Guiltinan, Kate Krempely, Holly LaDuca, Patrick Reineke,  
27 Stephanie Gutierrez, Phillip Gray, and Brigette Tippin Davis. 2018. “False-Positive  
28 Results Released by Direct-to-Consumer Genetic Tests Highlight the Importance of  
29 Clinical Confirmation Testing for Appropriate Patient Care.” *GENETICS in MEDICINE*  
30 00 (March): 1–7. <https://doi.org/10.1038/gim.2018.38>.
- 31 Taylor, Donald H, Robert M Cook-Deegan, Susan Hiraki, J Scott Roberts, Dan G Blazer, and  
32 Robert C Green. 2010. “Genetic Testing For Alzheimer’s And Long-Term Care  
33 Insurance.” *Health Affairs* 29 (1): 102–8. <https://doi.org/10.1377/hlthaff.2009.0525>.
- 34 Tiller, Jane, Susan Morris, Toni Rice, Krystal Barter, Moeen Riaz, Louise Keogh, Martin B  
35 Delatycki, Margaret Otlowski, and Paul Lacaze. 2019. “Genetic Discrimination by  
36 Australian Insurance Companies: A Survey of Consumer Experiences.” *European*  
37 *Journal of Human Genetics*. <https://doi.org/10.1038/s41431-019-0426-1>.
- 38 Timmers, Paul R H J, Ninon Mounier, Kristi Lall, Krista Fischer, Zheng Ning, Xiao Feng,  
39 Andrew D Bretherick, et al. 2019. “Genomics of 1 Million Parent Lifespans Implicates  
40 Novel Pathways and Common Diseases and Distinguishes Survival Chances.” *ELife* 8  
41 (January): e39856. <https://doi.org/10.7554/eLife.39856>.
- 42 Torkamani, Ali, and Eric Topol. 2019. “Polygenic Risk Scores Expand to Obesity.” *Cell* 177  
43 (3): 518–20. <https://doi.org/https://doi.org/10.1016/j.cell.2019.03.051>.
- 44 Torkamani, Ali, Nathan E. Wineinger, and Eric J. Topol. 2018. “The Personal and Clinical  
45 Utility of Polygenic Risk Scores.” *Nature Reviews Genetics* 19 (September): 1–10.  
46 <https://doi.org/10.1038/s41576-018-0018-x>.
- 47 Veysière, Luc, Ahmed Chaouachi, Erika Beng, François Fromaget, Franck Chevalier, and  
48 Melissa Caisson. 2017. “Study on the Performance and Adequacy of Pension  
49 Decumulation Practices in Four EU Countries.” [https://op.europa.eu/en/publication-](https://op.europa.eu/en/publication-detail/-/publication/d3cf91fd-e6ba-11e6-ad7c-01aa75ed71a1)  
50 [detail/-/publication/d3cf91fd-e6ba-11e6-ad7c-01aa75ed71a1](https://op.europa.eu/en/publication-detail/-/publication/d3cf91fd-e6ba-11e6-ad7c-01aa75ed71a1).



- 1 Visscher, Peter M., Naomi R. Wray, Qian Zhang, Pamela Sklar, Mark I. McCarthy, Matthew  
2 A. Brown, and Jian Yang. 2017. "10 Years of GWAS Discovery: Biology, Function, and  
3 Translation." *American Journal of Human Genetics* 101 (1): 5–22.  
4 <https://doi.org/10.1016/j.ajhg.2017.06.005>.
- 5 Vlaming, Ronald de, Aysu Okbay, Cornelius A. Rietveld, Magnus Johannesson, Patrik K. E.  
6 Magnusson, André G. Uitterlinden, Frank J. A. van Rooij, et al. 2017. "Meta-GWAS  
7 Accuracy and Power (MetaGAP) Calculator Shows That Hiding Heritability Is Partially  
8 Due to Imperfect Genetic Correlations across Studies." *PLOS Genetics* 13 (1):  
9 e1006495. <https://doi.org/10.1371/journal.pgen.1006495>.
- 10 Wang, Catharine, Tiernan J Cahill, Andrew Parlato, Blake Wertz, Qiankun Zhong, Tricia  
11 Norkunas Cunningham, and James J Cummings. 2018. "Consumer Use and Response to  
12 Online Third-Party Raw DNA Interpretation Services." *Molecular Genetics & Genomic  
13 Medicine* 6 (1): 35–43. <https://doi.org/10.1002/mgg3.340>.
- 14 Willer, Cristen J, Ellen M Schmidt, Sebanti Sengupta, Gina M Peloso, Stefan Gustafsson,  
15 Stavroula Kanoni, Andrea Ganna, et al. 2013. "Discovery and Refinement of Loci  
16 Associated with Lipid Levels." *Nature Genetics* 45 (11): 1274–83.  
17 <https://doi.org/10.1038/ng.2797>.
- 18 Winkler, Thomas W, Felix R Day, Damien C Croteau-Chonka, Andrew R Wood, Adam E  
19 Locke, Reedik Mägi, Teresa Ferreira, et al. 2014. "Quality Control and Conduct of  
20 Genome-Wide Association Meta-Analyses." *Nature Protocols* 9: 1192–1212.  
21 <https://doi.org/10.1038/nprot.2014.071>.
- 22 Witte, John S., Peter M. Visscher, and Naomi R. Wray. 2014. "The Contribution of Genetic  
23 Variants to Disease Depends on the Ruler." *Nature Reviews Genetics* 15 (11): 765–76.  
24 <https://doi.org/10.1038/nrg3786>.
- 25 Wright, Kevin M, Kristin A Rand, Amir Kermany, Keith Noto, Don Curtis, Daniel Garrigan,  
26 Dmitri Slinkov, et al. 2019. "A Prospective Analysis of Genetic Variants Associated  
27 with Human Lifespan." *G3: Genes|Genomes|Genetics* 9 (9): 2863 LP – 2878.  
28 <https://doi.org/10.1534/g3.119.400448>.
- 29 Wuttke, Matthias, Yong Li, Man Li, Karsten B Sieber, Mary F Feitosa, Mathias Gorski,  
30 Adrienne Tin, et al. 2019. "A Catalog of Genetic Loci Associated with Kidney Function  
31 from Analyses of a Million Individuals." *Nature Genetics* 51 (6): 957–72.  
32 <https://doi.org/10.1038/s41588-019-0407-x>.
- 33 Yengo, Loic, Julia Sidorenko, Kathryn E Kemper, Zhili Zheng, Andrew R Wood, Michael N  
34 Weedon, Timothy M Frayling, et al. 2018. "Meta-Analysis of Genome-Wide  
35 Association Studies for Height and Body Mass Index in ~700000 Individuals of  
36 European Ancestry." *Human Molecular Genetics* 27 (20): 3641–49.  
37 <https://doi.org/10.1093/hmg/ddy271>.
- 38 Young, Alexander I, Stefania Benonisdottir, Molly Przeworski, and Augustine Kong. 2019.  
39 "Deconstructing the Sources of Genotype-Phenotype Associations in Humans." *Science*  
40 365 (6460): 1396–1400. <https://doi.org/10.1126/science.aax3710>.
- 41 Yusuf, Salim, Philip Joseph, Sumathy Rangarajan, Shofiqul Islam, Andrew Mente, Perry  
42 Hystad, Michael Brauer, et al. 2019. "Modifiable Risk Factors, Cardiovascular Disease,  
43 and Mortality in 155 722 Individuals from 21 High-Income, Middle-Income, and Low-  
44 Income Countries (PURE): A Prospective Cohort Study." *The Lancet*.  
45 [https://doi.org/https://doi.org/10.1016/S0140-6736\(19\)32008-2](https://doi.org/https://doi.org/10.1016/S0140-6736(19)32008-2).
- 46 Zeggini, Eleftheria, Anna L Gloyn, Anne C Barton, and Louise V Wain. 2019. "Translational  
47 Genomics and Precision Medicine: Moving from the Lab to the Clinic." *Science* 365  
48 (6460): 1409 LP – 1413. <https://doi.org/10.1126/science.aax4588>.
- 49 Zick, Cathleen D, Charles J Mathews, J Scott Roberts, Robert Cook-Deegan, Robert J  
50 Pokorski, and Robert C Green. 2005. "Genetic Testing for Alzheimer's Disease and Its

- 1           Impact on Insurance Purchasing Behavior.” *Health Affairs (Project Hope)* 24 (2): 483–
- 2           90. <https://doi.org/10.1377/hlthaff.24.2.483>.
- 3   Zick, Cathleen D, Ken R Smith, Robert N Mayer, and Jeffery R Botkin. 2000. “Genetic
- 4           Testing, Adverse Selection, and the Demand for Life Insurance.” *American Journal of*
- 5           *Medical Genetics* 93 (1): 29–39.
- 6