

Genetic susceptibility for major depressive disorder associates with trajectories of depressive symptoms across childhood and adolescence

Alexandre A. Lussier^{1,2}, Matt Hawrilenko^{3,4}, Min-Jung Wang^{1,5}, Karmel W. Choi^{1,2,5}, Janine Cerutti¹, Yiwen Zhu¹, Major Depressive Disorder Working Group of the Psychiatric Genomics Consortium[#], Erin C. Dunn^{1,2,6}

¹ Massachusetts General Hospital, Boston, MA

² Harvard Medical School, Boston, MA

³ University of Washington School of Medicine, Seattle, WA

⁴ Veteran Affairs Puget Sound Healthcare System, Seattle, WA

⁵ Harvard T.H. Chan School of Public Health, Boston, MA

⁶ Center on the Developing Child at Harvard University, Cambridge, MA

[#] Listed in the Supplemental Materials

Word count: 5998

Abbreviated title: Genetic contributions to depressive symptom trajectories

ABSTRACT

Background: Depression that onsets during childhood and adolescence is associated with worse illness course and outcomes. However, the genetic factors that influence risk for early-onset depression remain mostly unknown. Using data collected over thirteen years, we examined whether polygenic risk scores (PRS) capturing genetic risk for major depressive disorder (MDD) were associated with early-onset depressive symptoms, as assessed from childhood to adolescence.

Methods: Data came from the Avon Longitudinal Study of Parents and Children, a prospective, longitudinal birth cohort (analytic sample=7,308 youth). We analyzed the relationship between genetic susceptibility to depression and three time-dependent measures of depressive symptoms across ages 4-16.5 (trajectories, onset, and cumulative burden of symptoms). Trajectories were constructed using a growth mixture model with structured residuals. Symptom onset and cumulative burden were assessed using the intercept and area under the trajectory curves, respectively. PRS were generated using MDD summary statistics from the Psychiatric Genomics Consortium. We used MAGMA to identify gene-level associations with these measures.

Results: Youth were classified into six classes of depressive symptom trajectories: *high/renitent* (26.5% of youth), *high/reversing* (5.8%), *childhood decrease* (6.1%), *late childhood peak* (3%), *adolescent spike* (2.5%), and *minimal symptoms* (56.1%). PRS could discriminate between youth in the “high” classes compared to the minimal symptoms and childhood decrease classes. Two genes (SIX5; DMPK) were nominally associated with both onset and cumulative burden.

Conclusions: This study highlights a role for genetic factors in shaping depressive symptoms across childhood and adolescence, particularly among youths with generally high or low symptoms, regardless of age-independent responding.

Keywords: depression trajectories, longitudinal, polygenic risk scores, development, ALSPAC

Abbreviations: Avon Longitudinal Study of Parents and Children (ALSPAC); growth mixture model with structured residuals (GMM-SR); Major depressive disorder (MDD); polygenic risk scores (PRS).

INTRODUCTION

Major depressive disorder (MDD) is one of the most common, costly, and disabling mental disorders, with lifetime prevalence estimated at 11.7% among adolescents (Merikangas et al., 2010) and 16.6% among adults in the United States (Kessler et al., 2005). While depression can emerge at any point in the life course, nearly one third of individuals who experience depression report a first onset before age 21 (Zisook et al., 2007). These early-onset cases of depression have been associated with worse illness course and outcomes in adulthood, including an increased risk for adult depression and later physical and mental health comorbidities (McLaughlin et al., 2012). However, depression is a complex and developmentally heterogeneous disorder. Individuals with depression not only have different ages of first onset, but also show varying patterns of persistence once the disorder begins. Although prior cross-sectional studies have tried to model this heterogeneity in order to identify more homogeneous subgroups of depression cases (Nandi, Beard, & Galea, 2009), these studies are limited because depressive symptoms were only measured at a single point in time.

As such, more recent longitudinal studies have sought to model this time-dependent heterogeneity in depressive symptoms (as well as internalizing symptoms more broadly) by classifying individuals into subgroups based on their symptom *trajectories* over time. These studies have prospectively and repeatedly assessed depressive symptoms across an average of 3-6 years of development (Ellis et al., 2017); only a few include participants under 10 years old (Dekker et al., 2007; Kwong et al., 2019; Rice et al., 2018; Whalen, Sylvester, & Luby, 2017). Most of them have characterized between three and six primary trajectory classes, including people with consistently low symptoms, chronically high symptoms, and decreases/increases in

symptoms between different windows of development such as adolescence and childhood. Importantly, this body of work has shown that subtyping depression by its developmental trajectory can help identify the biological and environmental factors that shape the course of depressive symptoms over time (Ellis et al., 2017).

With respect to biological factors, genetic variation likely explains at least some of the heterogeneity of depressive symptoms across development. In particular, genome-wide association studies (GWAS) suggest that common genetic variation accounts for approximately 9% of the variance in adult MDD (Howard et al., 2019; Wray et al., 2018). However, most GWAS have focused on presence versus absence of lifetime depression and/or cross-sectional measures of depressive symptoms, which do not account for developmental heterogeneity (Lee et al., 2013). Additional studies using longitudinal data are needed to better understand genetic predictors of depressive symptoms across time, especially because prior work has shown that heritability estimates of depression may increase over time (Bergen, Gardner, & Kendler, 2007).

In addition to using longitudinal data, recent studies have also moved towards examining genetic liability to depression using polygenic risk scores (PRS), which capture the additive effect of multiple alleles aggregated using summary statistics from GWAS. PRS have been used to assess the impact of genetic contributions on depressive phenotypes at various ages. For example, PRS of MDD have recently been associated with self- or maternal-reported childhood psychopathologies, such as internalizing symptoms from 7 to 16 (Akingbuwa et al., 2020), as well as self-reported adolescent depressive symptom trajectories from ages 10 to 24 (Kwong et al., 2019; Rice et al., 2018). Although these studies have provided important new insights into

the genetic underpinnings of depression, they collectively have two main limitations. First, most have focused on narrow ages range, with only one study including children younger than 10 years old (Akingbuwa et al., 2020). Thus, there has been limited attention to the earliest manifestations of depressive symptoms, which is a shortcoming as some symptoms can emerge as early as preschool (Whalen et al., 2017). Accounting for the full age span when symptoms emerge and occur is needed to capture the full course of depressive symptoms during development and identify the factors that drive and shape their trajectories across the life course. Second, because longitudinal studies of youth have focused almost exclusively on age-related changes in symptoms, genetic links to age-independent patterns, such as changes in symptom length and recurrence frequency across time, are less well understood. For example, youth may have characteristic patterns of responding to positive and/or negative life events that can influence the chronicity and recurrence of any given depressive episode (Hawrilenko, Masyn, Cerutti, & Dunn, 2019). Efforts to disentangle biological from environmental sources of this interindividual variability in depressive symptom patterns of depressive is needed.

To address these gaps, we examined the genetic contributions to depressive symptoms across a thirteen-year period (from age 4 to 16.5), which to our knowledge is the longest time-span examined for depressive (or internalizing) symptoms across childhood and adolescence. Recognizing that developmental heterogeneity encompasses not only symptom trajectories across time, but also the age at onset and burden of symptoms, we modeled the developmental patterns of depressive symptoms in three ways. First, we assessed depressive symptom trajectories, constructed using a new form of growth mixture modeling that includes structured residuals to account for symptom changes over time (GMM-SR; Hawrilenko et al., 2019).

Second, we modeled onset of depressive symptoms at age 4, to coincide with the earliest time period reported in prior studies (Whalen et al., 2017). Third, we examined the cumulative burden of depressive symptoms, reflecting the overall level of depressive symptoms across development. We then assessed whether PRS generated from recent large-scale GWAS of MDD (Wray et al., 2018) were associated with these three outcome measures. Finally, we performed genome-wide analyses to identify gene-level associations with depressive phenotypes during childhood and adolescence.

MATERIALS AND METHODS

Cohort and analytic sample

Data came from the Avon Longitudinal Study of Parents and Children (ALSPAC), a large population-based birth cohort out of Avon, England of children followed from before birth through early adulthood (Boyd et al., 2013; Fraser et al., 2013) (see **supplemental materials** for details). The current study is based on an analytic sample of 7,308 children who met the following inclusion criteria: singleton births with genotype data and at least one measure of depressive symptoms completed between 4 and 16.5 years of age, as described below. Compared to the total original ALSPAC sample, youths in our analytic sample were more likely to be white, have slightly higher birth weights, and be born to mothers who were older, married, and had higher employment, higher education, and fewer previous pregnancies (**Table S1**).

Depressive symptoms measures

Depressive symptom scores were derived from the Strengths and Difficulties Questionnaire (SDQ; Goodman, 1997) and the Short Mood and Feelings Questionnaire (SMFQ; Angold,

Costello, Messer, & Pickles, 1995), completed by caregivers via mailed questionnaires. Briefly, we combined two of the five SDQ subscales, child *emotional problems* and *peer difficulties*, with the SMFQ in adolescents. The SDQ subscales captured “internalizing symptoms” at seven timepoints: ages 4, 7, 8, 9.5, 11.5, 13, and 16.5 (Goodman, 2001), while the SMFQ assessed depressive symptoms in adolescents at three timepoints: ages 11.5, 13, and 16.5 (Angold et al., 1995). These measures were combined into a single latent depressive symptom score at each time point using confirmatory factor analysis to analyze and account for changes in measurement properties over time (Hawrilenko et al., 2019; Kline, 2015). Factor score estimates of this latent score were used in the subsequent growth mixture models (Curran et al., 2018).

To characterize depressive symptoms across childhood and adolescence, we analyzed three time-dependent measures of depressive symptoms: (1) trajectories of symptoms across ages 4-16.5; (2) onset of symptoms; and (3) cumulative burden of symptoms. The methods used to construct these variables are described below.

Depressive symptom trajectories

First, we used growth mixture modeling (GMM) in MPlus (version 8.0) to identify age-dependent trajectories of depressive symptoms across this 13-year period (Muthén & Muthén, 2017). To this end, we used a novel form of GMM with structured residuals (GMM-SR) to classify youths into distinct subgroups using their patterns of change in depression over time (Hawrilenko et al., 2019). The GMM-SR partitions an individual’s variability in depression over time into: (1) an average level, (2) age-related trajectories, and (3) time-invariant patterns of change. The latter were modeled through the structured residual, which captures the difference

between the observed depression score and the score predicted by the model at any timepoint (e.g., the youth's intercept and trajectory of symptoms). Thus, the residual represents the influence of unmodeled events, adding an autoregressive structure to how these unmodeled events relate over time. Here, positive values represent the degree to which a deviation from average symptom levels perpetuates across time (renitent responding), while negative values represent the tendency for symptoms to fluctuate above and below an average level (reversing responding). Importantly, the GMM-SR allowed us to disaggregate age-dependent and age-independent patterns of responding over time. In other words, we could analyze not only depressive symptom levels as a function of age (age-dependent patterns), but also how symptom levels respond to change from unmodeled life events (everything except age) within and between youths over time.

Using the GMM-SR, we characterized six overarching classes of depressive symptoms trajectories (**Figure 1**): 1) *minimal symptoms* (stable and low symptoms across development), 2) *high/renitent* (high symptoms with few oscillations between ages), 3) *high/reversing* (high symptoms with sharp oscillations between ages), 4) *childhood decrease* (high symptoms decreasing across childhood), 5) *late childhood peak* (symptoms increasing through middle childhood and decreasing over adolescence), and 6) *adolescent spike* (low childhood symptoms spiking to high levels in adolescence). Each participant received a probability of assignment to each trajectory, ranging from 0-100%. As no tools currently exist to account for classification uncertainty in genome-wide associations, we assigned each individual to the class in which they had the highest probability and performed all subsequent analyses using these classifications. With this approach, the number of youths in each trajectory class was as follows: 4,103 minimal

symptoms (56.1%), 1,933 high/renitent (26.5%), 427 high/reversing (5.8%), 445 childhood decrease (6.1%), 219 late childhood peak (3%), and 181 adolescent spike (2.5%).

Onset of depressive symptoms.

Second, we measured the earliest possible onset of depressive symptoms, captured by the intercept of the above depressive symptom trajectories. This intercept corresponded to baseline depressive symptoms latent score at age four for each individual (values ranged from 0.23 to 1.64, mean= 0.75). Given that clinically relevant depressive symptoms can emerge as early as preschool (i.e., around age 4), early manifestations of depression may be more genetically driven and reflect stronger pre-existing biological vulnerabilities (Luby, 2010; Whalen et al., 2017).

Cumulative burden of depressive symptoms.

Third, we measured cumulative burden of depressive symptoms using the area under the curve (AUC) of the depressive symptom trajectory (Mills et al., 2018). We calculated the AUC as the integral of the function describing depressive symptom trajectories, estimated using individual growth factors (intercept, slope, quadratic, cubic and quartic terms). Thus, youths with higher depressive symptom latent scores over developmental time display higher a cumulative burden of symptoms (AUC values ranged from 0.27 to 2.53, mean=1.11). Of note, this measure was highly correlated with the onset of depressive symptoms ($r=0.89$), suggesting that the two measures likely tap similar dimensions of depressive symptom trajectories.

Genotyping, quality control, and imputation

9,912 youths in the full ALSPAC cohort were genotyped on the Illumina HumanHap550-Quad

genotyping platform (Illumina Inc., San Diego, CA). After quality control, 500,527 directly genotyped SNPs and 8,082 youths remained, of whom 7,308 (90.4%) were assigned a depressive symptom trajectory class; the remaining children were unassigned because they did not have depressive symptoms measured at least once (**Figure S1**). See **supplemental materials** for details.

Polygenic risk score (PRS) generation

We constructed PRSs using summary statistics from the Psychiatric Genomics Consortium GWAS of MDD, wave 2 (PGC-MDD2; 59,851 cases; 113,154 controls) in PLINK v.1.07 (Purcell et al., 2007; Wray et al., 2018). We then included PRS scores as predictors of latent class membership, using the two-step method to account for classification uncertainty (Bakk & Kuha, 2018). We standardized PRS so that all reported ORs could be interpreted as a one standard deviation increase in the score. See **supplemental materials** for details.

Analyses

We performed our analysis in two main stages, assessing the impact of genetics on depressive symptom trajectories at the genome-wide and gene-level. First, we assessed the impact of genome-wide genetic variation on the overall probability of trajectory class assignment. Here, we performed six logistic regressions (one per class) using PRS z-scores as the independent variable and class membership as the dependent or outcome variable (coded 0 or 1). Thus, each regression compared youth assigned to the tested class against the referent of all other youth assigned to other classes. Linear regressions were performed for the onset and cumulative burden of depressive symptoms. In parallel, we integrated PRS as predictors of trajectory class

membership in the GMM-SR, performing multinomial logistic regressions in MPlus to contrast the probability of assignment between different classes, rather than the overall probability (Hawrilenko et al., 2019). We adjusted for multiple comparisons using a false discovery rate (FDR) set at 5% across both analyses (Benjamini & Hochberg, 1995). Odds ratios (ORs) represented the probability of being assigned to the reference trajectory class for each one-unit increase in standardized PRS.

Second, we assessed gene-level associations across the genome with our three outcome measures using regression analyses in MAGMA (version 1.06)(de Leeuw, Mooij, Heskes, & Posthuma, 2015). For the trajectories, we focused on youth assigned to the *minimal symptoms* (control) and *high/renitent* (case) classes. These were the most conceptually differentiated classes and had the largest sample sizes (combined n=5,922). A significance threshold of $p < 2.93e-6$ was set to account for multiple testing of 17,044 genes; a nominal significance threshold was set at $p < 1e-4$.

All analyses were adjusted for the top 10 principal components to account for population stratification. Although there are prominent sex differences in depression, we did not stratify our analyses by sex to preserve sample size (Kessler, McGonagle, Swartz, Blazer, & Nelson, 1993). However, a sensitivity analysis that included sex found nearly identical results.

RESULTS

PRS explained trajectory membership, depressive symptoms onset, and cumulative burden

As an initial analysis of the relationship between PRS for MDD and youth depressive symptom trajectories, we examined the impact of the depression PRS on each trajectory class. Using

logistic regressions, we found that assignment to four different classes was significantly associated with PRS (**Figure 2; Table 1**). In particular, higher PRS were associated with higher probability of assignment to the high/renitent ($p=8.5e-10$; $OR=1.18$) and high/reversing ($p=3.32e-4$; $OR=1.20$) classes of depressive symptom trajectories. By contrast, lower PRS were associated with higher probability of being in the minimal symptoms ($p=2.59e-10$; $OR=0.86$) or childhood decrease classes ($p=2.59e-2$; $OR=0.90$). The probability of assignment to the late childhood peak and adolescent spike classes did not vary across PRS.

Furthermore, PRS were significantly associated with both the intercept of depressive symptoms (onset, $p=8.3e-07$, $OR=1.02$) and the overall AUC (cumulative burden, $p=1.5e-12$, $\beta =1.04$) across all measured youths.

PRS differentiated depressive symptom trajectories

We next assessed whether latent classes could be differentiated based on PRS alone and found evidence that the PRS could differentiate between some, but not all, trajectory classes (**Table 2; Figure S2**). Three contrasts in particular showed statistically significant differences following multiple-test correction. Specifically, each one standard deviation increase in PRS was positively associated with an increased odds of being assigned to the high/renitent class compared to the minimal symptoms class ($OR=1.19$, 95% CI: 1.09-1.29; $p_{adj}<1e-4$) and childhood decrease class ($OR=1.23$, 95% CI: 1.04-1.46; $p_{adj}=0.05$). Similarly, each one-unit difference in the standardized PRS was positively associated with an increased odds of being assigned to the high/reversing class compared to the minimal symptoms class ($OR=1.23$, 95% CI: 1.07-1.41; $p_{adj}=0.023$) and was directionally consistent with the childhood decrease classes ($OR=1.23$, 95% CI: 1.04-1.46;

$p_{adj}=0.06$). The late childhood peak and adolescent spike classes could not be differentiated by PRS alone.

Gene-based analyses revealed nominal associations with class membership, onset, and cumulative burden of depressive symptoms

We attempted to identify specific genes associated with our three outcome measures. No genes reached statistical significance at the genome-wide level ($p < 2.93e-6$) when comparing youths in the high/renitent class to those in the minimal symptoms class, or when modeling onset and cumulative burden (**Figures S3, S4; Table S2**). However, two genes (SIX5; DMPK) were nominally associated with both onset and cumulative burden of depressive symptoms.

DISCUSSION

In the present study, we examined the genetic contributions to developmental patterns of depressive symptoms (trajectory, onset, and cumulative burden) across a thirteen-year age range that spanned both childhood and adolescence. Building on previous work, we used a unique GMM-SR to characterize six developmental trajectories of depressive symptoms that have not been previously identified (Hawrilenko et al., 2019). Using the trajectory classes, onset, and cumulative burden of depressive symptoms, we showed that genetic liability to depression, measured using PRS of MDD, partially shaped depressive symptom trajectories across development.

Similar to previous studies, our results showed that genetic liability may best discriminate generally high versus low patterns of depressive symptoms during development. Given that the

PRS were generated from adult samples that were dichotomized between depression cases and controls, it is possible that the high and low classes of depressive symptoms represent the early manifestations of these two distinct categories (Wray et al., 2018). However, we also showed that these associations held true irrespective of age-associated patterns of responding (i.e., renitent and reverse responding). As such, these findings suggest that genetic liability to depression may not impact how youths respond to life events and that the fluctuation in depressive symptoms between timepoints may be more reflective of self-coping mechanisms that are environmental driven or learned (Waugh & Koster, 2015).

By contrast, genetic liability to depression was negatively associated with membership to the childhood decrease class, showing a pattern similar to the minimal symptoms class despite youths having high levels of depressive symptoms at early ages. These results suggest that high depressive symptoms limited to early childhood may be driven by early life events, or potentially reflect non-genetic resilience factors not captured by the depression PRS. As genetics are stable throughout the life course, it is possible that genetic vulnerability or resilience to depression could manifest throughout childhood and adolescent and that while depressive symptom trajectories vary, individual risk for depression later in life may remain the same. Previous work has also shown that the impact of genetics on depression (i.e., heritability) increases over time, which suggests that some youths may self-select environments that reinforce their genetic susceptibility to depression (Bergen et al., 2007).

However, not all depressive symptom trajectories were influenced by genetic factors and additional work is needed to fully understand the mechanisms driving both childhood and adult

depression. For instance, we did not observe any associations between genetic liability to depression and the late childhood peak or adolescent spike classes. While the sample sizes of these trajectories were small, membership to these classes may be primarily driven by environmental factors, rather than genetic mechanisms. Indeed, both classes showed inflection points consistent with periods related to both internal (i.e., puberty) and external factors previously associated with depression, such as social environment, academic testing, and the like (Graber, Lewinsohn, Seeley, & Brooks-Gunn, 1997). These results highlight the need for multiple timepoints when assessing the factors influencing depressive symptoms, as a single timepoint may not have captured these distinct patterns of developmental heterogeneity. Future studies with access to data extending into adulthood may be able to further refine these trajectories and determine whether they do indeed reflect depression rates in adulthood.

In addition to trajectory classes, our results also suggested that PRS of depression influence the onset and cumulative burden of depressive symptoms during development. Although these findings are perhaps not entirely surprising considering the close relationship between overall trajectory and the measures used to assess onset and cumulative burden, they nevertheless suggest that genetic liability to depression influences multiple facets of developmental patterns in depressive symptoms.

Moving beyond the polygenic influences of depression, we found no significant associations between depressive symptom trajectories and individual genes. While the lack of associations may, in part, be due to the small sample sizes, the genes identified at more relaxed p-value thresholds with the onset and cumulative burden of depressive symptoms could reflect common

pathways impacting the manifestation of symptoms during childhood and adolescence. Although not previously been associated with psychiatric disorders, these genes may reflect other factors underlying the depression symptom trajectories, such as underlying health issues and environmental exposures. However, our lack of significant gene-level associations may also emphasize polygenicity of depression, where its characteristics cannot be attributed to specific genes. Furthermore, given that depressive symptoms are highly correlated with environmental factors in this sample, the high variation in depressive symptom onset, cumulative burden, and overall trajectory may be attributed to factors not captured by genetics alone (Hawrilenko et al., 2019; Smoller et al., 2019). Genetic and environmental factors may also interact to drive depressive symptom trajectories, which may lead to the more complex phenotypes observed in the present study.

LIMITATIONS

There are some limitations to the present study, many rooted in the cohort itself. Aside from the relatively small sample size of this cohort for genetic analyses, the depressive symptoms scores were generated from maternal reports only, which may introduce some inconsistencies over time or bias in reporting. Furthermore, this longitudinal sample is subject to attrition and self-selection over time and is composed of mainly White youths, reducing the generalizability and breadth of our findings to other populations (Boyd et al., 2013). The PRS were also generated based on studies of MDD in adults, which may not be entirely reflective of depressive symptoms during early life (Wray et al., 2018). However, given the high correlation between early onset depression and adult depression, our results likely capture a subset of youths that display increased genetic predisposition to major depression.

CONCLUSIONS

Overall, our findings point to PRS values as potential detectable early risk factors for depressive phenotypes during childhood and adolescence, particularly in youth with higher depressive symptoms. These findings may ultimately lead to the identification of genetic factors that shape age of depression onset and overall disease course, providing early targets to guide depression prevention efforts.

KEY POINTS

- The genetic factors that influence risk for early-onset depression and shape depressive symptoms over developmental time remain mostly unknown.
- PRS for depression can discriminate between high and low patterns of depressive symptoms during childhood and adolescence.
- PRS may act as detectable early risk factors for depressive phenotypes, particularly in youth with higher depressive symptoms.
- Further research is needed to understand the environmental and biological mechanisms driving depressive symptom trajectories.

ACKNOWLEDGEMENTS

This research was funded by the National Institute of Mental Health of the National Institutes of Health under Award Numbers K01MH102403 and R01MH113930 (Dunn). The content is solely the responsibility of the authors and does not necessarily represent the official views of the National Institutes of Health. We are extremely grateful to all the families who took part in this

study, the midwives for their help in recruiting them, and the whole ALSPAC team, which includes interviewers, computer and laboratory technicians, clerical workers, research scientists, volunteers, managers, receptionists and nurses. The UK Medical Research Council and the Wellcome Trust (Grant ref: 102215/2/13/2) and the University of Bristol provide core support for ALSPAC. A comprehensive list of grants funding is available on the ALSPAC website (<http://www.bristol.ac.uk/alspac/external/documents/grant-acknowledgements.pdf>). GWAS data was generated by Sample Logistics and Genotyping Facilities at Wellcome Sanger Institute and LabCorp (Laboratory Corporation of America) using support from 23andMe. This publication is the work of the authors who will serve as guarantors for the contents of this paper. We thank Khalil Zlaoui for his early contributions to this work and Dr. Kathryn Masyn for her input on the growth mixture models.

ETHICAL CONSIDERATIONS

Ethical approval for the study was obtained from the ALSPAC Ethics and Law Committee and the Local Research Ethics Committee. Informed consent for the use of data collected via questionnaires and clinics was obtained from participants following the recommendations of the ALSPAC Ethics and Law Committee at the time.

CORRESPONDENCE

Erin C. Dunn, Psychiatric and Neurodevelopmental Genetics Unit, Center for Genomic Medicine, Massachusetts General Hospital, 185 Cambridge Street, Simches Research Building 6th Floor, Boston, MA 02114; email: edunn2@mgh.harvard.edu.

REFERENCES

- Akingbuwa, W. A., Hammerschlag, A. R., Jami, E. S., Allegrini, A. G., Karhunen, V., Sallis, H., ... Christel M Middeldorp. (2020). Longitudinal analyses in 42,998 subjects show genetic associations between childhood psychopathology and adult depression and related traits. *JAMA Psychiatry, In press.*
- Angold, A., Costello, E. J., Messer, S. C., & Pickles, A. (1995). Development of a short questionnaire for use in epidemiological studies of depression in children and adolescents. *International Journal of Methods in Psychiatric Research*, Vol. 5, pp. 237–249. US: John Wiley & Sons.
- Bakk, Z., & Kuha, J. (2018). Two-Step Estimation of Models Between Latent Classes and External Variables. *Psychometrika*. <https://doi.org/10.1007/s11336-017-9592-7>
- Benjamini, Y., & Hochberg, Y. (1995). Controlling the False Discovery Rate: A Practical and Powerful Approach to Multiple Testing. *Journal of the Royal Statistical Society. Series B (Methodological)*, 57(1), 289–300. <https://doi.org/10.2307/2346101>
- Bergen, S. E., Gardner, C. O., & Kendler, K. S. (2007). Age-Related Changes in Heritability of Behavioral Phenotypes Over Adolescence and Young Adulthood: A Meta-Analysis. *Twin Research and Human Genetics*, 10(3), 423–433. [https://doi.org/DOI: 10.1375/twin.10.3.423](https://doi.org/DOI:10.1375/twin.10.3.423)
- Boyd, A., Golding, J., Macleod, J., Lawlor, D. A., Fraser, A., Henderson, J., ... Davey Smith, G. (2013). Cohort Profile: the 'children of the 90s'--the index offspring of the Avon Longitudinal Study of Parents and Children. *International Journal of Epidemiology*, 42(1), 111–127. <https://doi.org/10.1093/ije/dys064>
- Curran, P. J., Cole, V., Giordano, M., Georgeson, A. R., Hussong, A. M., & Bauer, D. J. (2018). Advancing the Study of Adolescent Substance Use Through the Use of Integrative Data

Analysis. *Evaluation & the Health Professions*, 41(2), 216–245.

<https://doi.org/10.1177/0163278717747947>

de Leeuw, C. A., Mooij, J. M., Heskes, T., & Posthuma, D. (2015). MAGMA: Generalized Gene-Set Analysis of GWAS Data. *PLOS Computational Biology*, 11(4), e1004219.

Retrieved from <https://doi.org/10.1371/journal.pcbi.1004219>

Dekker, M. C., Ferdinand, R. F., Van Lang, N. D. J., Bongers, I. L., Van Der Ende, J., & Verhulst, F. C. (2007). Developmental trajectories of depressive symptoms from early childhood to late adolescence: gender differences and adult outcome. *Journal of Child Psychology and Psychiatry*, 48(7), 657–666. <https://doi.org/10.1111/j.1469-7610.2007.01742.x>

Ellis, R. E. R., Seal, M. L., Simmons, J. G., Whittle, S., Schwartz, O. S., Byrne, M. L., & Allen, N. B. (2017). Longitudinal Trajectories of Depression Symptoms in Adolescence: Psychosocial Risk Factors and Outcomes. *Child Psychiatry and Human Development*. <https://doi.org/10.1007/s10578-016-0682-z>

Fraser, A., Macdonald-Wallis, C., Tilling, K., Boyd, A., Golding, J., Davey Smith, G., ... Lawlor, D. A. (2013). Cohort Profile: the Avon Longitudinal Study of Parents and Children: ALSPAC mothers cohort. *International Journal of Epidemiology*, 42(1), 97–110.

<https://doi.org/10.1093/ije/dys066>

Goodman, R. (1997). The Strengths and Difficulties Questionnaire: A Research Note. *Journal of Child Psychology and Psychiatry*, 38(5), 581–586. <https://doi.org/10.1111/j.1469-7610.1997.tb01545.x>

<https://doi.org/10.1111/j.1469-7610.1997.tb01545.x>

Goodman, R. (2001). Psychometric Properties of the Strengths and Difficulties Questionnaire. *Journal of the American Academy of Child & Adolescent Psychiatry*, 40(11), 1337–1345.

<https://doi.org/10.1097/00004583-200111000-00015>

- Graber, J. A., Lewinsohn, P. M., Seeley, J. R., & Brooks-Gunn, J. (1997). Is psychopathology associated with the timing of pubertal development? *Journal of the American Academy of Child and Adolescent Psychiatry*. <https://doi.org/10.1097/00004583-199712000-00026>
- Hawrilenko, M., Masyn, K. E., Cerutti, J. K., & Dunn, E. C. (2019). Individual differences in the course of youth depression: The importance of renitence and reversion. *MedRxiv*, 19012872. <https://doi.org/10.1101/19012872>
- Howard, D. M., Adams, M. J., Clarke, T.-K., Hafferty, J. D., Gibson, J., Shirali, M., ... Consortium, M. D. D. W. G. of the P. G. (2019). Genome-wide meta-analysis of depression identifies 102 independent variants and highlights the importance of the prefrontal brain regions. *Nature Neuroscience*, 22(3), 343–352. <https://doi.org/10.1038/s41593-018-0326-7>
- Kessler, R. C., Berglund, P., Demler, O., Jin, R., Merikangas, K. R., & Walters, E. E. (2005). Lifetime Prevalence and Age-of-Onset Distributions of DSM-IV Disorders in the National Comorbidity Survey Replication. *JAMA Psychiatry*, 62(6), 593–602. <https://doi.org/10.1001/archpsyc.62.6.593>
- Kessler, R. C., McGonagle, K. A., Swartz, M., Blazer, D. G., & Nelson, C. B. (1993). Sex and depression in the National Comorbidity Survey I: Lifetime prevalence, chronicity and recurrence. *Journal of Affective Disorders*. [https://doi.org/10.1016/0165-0327\(93\)90026-G](https://doi.org/10.1016/0165-0327(93)90026-G)
- Kline, R. B. (2015). *Principles and Practice of Structural Equation Modeling, Fourth Edition*. Retrieved from <https://books.google.com/books?id=Q61ECgAAQBAJ>
- Kwong, A. S. F., López-López, J. A., Hammerton, G., Manley, D., Timpson, N. J., Leckie, G., & Pearson, R. M. (2019). Genetic and Environmental Risk Factors Associated With Trajectories of Depression Symptoms From Adolescence to Young Adulthood Genetic and

Environmental Risk Factors Associated With Trajectories of Depression Symptoms Genetic and Environmental Risk Factors . *JAMA Network Open*, 2(6), e196587–e196587.

<https://doi.org/10.1001/jamanetworkopen.2019.6587>

Lee, S. H., Ripke, S., Neale, B. M., Faraone, S. V., Purcell, S. M., Perlis, R. H., ... Wray, N. R. (2013). Genetic relationship between five psychiatric disorders estimated from genome-wide SNPs. *Nature Genetics*. <https://doi.org/10.1038/ng.2711>

Luby, J. L. (2010). Preschool Depression: The Importance of Identification of Depression Early in Development. *Current Directions in Psychological Science*, 19(2), 91—95.

<https://doi.org/10.1177/0963721410364493>

McLaughlin, K. A., Green, J. G., Gruber, M. J., Sampson, N. A., Zaslavsky, A. M., & Kessler, R. C. (2012). Childhood adversities and first onset of psychiatric disorders in a national sample of US adolescents. *Archives of General Psychiatry*.

<https://doi.org/10.1001/archgenpsychiatry.2011.2277>

Merikangas, K. R., He, J.-P., Burstein, M., Swanson, S. A., Avenevoli, S., Cui, L., ... Swendsen, J. (2010). Lifetime prevalence of mental disorders in U.S. adolescents: results from the National Comorbidity Survey Replication--Adolescent Supplement (NCS-A). *Journal of the American Academy of Child and Adolescent Psychiatry*, 49(10), 980–989.

<https://doi.org/10.1016/j.jaac.2010.05.017>

Mills, J. C., Pence, B. W., Todd, J. V, Bengtson, A. M., Breger, T. L., Edmonds, A., ...

Adimora, A. A. (2018). Cumulative Burden of Depression and All-Cause Mortality in Women Living With Human Immunodeficiency Virus. *Clinical Infectious Diseases*, 67(10), 1575–1581. <https://doi.org/10.1093/cid/ciy264>

Muthén, L. K., & Muthén, B. O. (2017). Mplus User's Guide. Eighth Edition. *Los Angeles, CA:*

- Muthén & Muthén*. <https://doi.org/10.1111/j.1600-0447.2011.01711.x>
- Nandi, A., Beard, J. R., & Galea, S. (2009). Epidemiologic heterogeneity of common mood and anxiety disorders over the lifecourse in the general population: a systematic review. *BMC Psychiatry*, *9*(1), 31. <https://doi.org/10.1186/1471-244X-9-31>
- Purcell, S., Neale, B., Todd-Brown, K., Thomas, L., Ferreira, M. A., Bender, D., ... Sham, P. C. (2007). PLINK: a tool set for whole-genome association and population-based linkage analyses. *Am J Hum Genet*, *81*(3), 559–575. [https://doi.org/S0002-9297\(07\)61352-4](https://doi.org/S0002-9297(07)61352-4) [pii]10.1086/519795
- Rice, F., Riglin, L., Thapar, A. K., Heron, J., Anney, R., O'Donovan, M. C., & Thapar, A. (2018). Characterizing Developmental Trajectories and the Role of Neuropsychiatric Genetic Risk Variants in Early-Onset Depression. *JAMA Psychiatry*, *76*(3), 306–313. <https://doi.org/10.1001/jamapsychiatry.2018.3338>
- Smoller, J. W., Andreassen, O. A., Edenberg, H. J., Faraone, S. V., Glatt, S. J., & Kendler, K. S. (2019). Psychiatric genetics and the structure of psychopathology. *Molecular Psychiatry*, *24*(3), 409–420. <https://doi.org/10.1038/s41380-017-0010-4>
- Waugh, C. E., & Koster, E. H. W. (2015). A resilience framework for promoting stable remission from depression. *Clinical Psychology Review*. <https://doi.org/10.1016/j.cpr.2014.05.004>
- Whalen, D. J., Sylvester, C. M., & Luby, J. L. (2017). Depression and Anxiety in Preschoolers: A Review of the Past 7 Years. *Child and Adolescent Psychiatric Clinics of North America*, *26*(3), 503–522. <https://doi.org/10.1016/j.chc.2017.02.006>
- Wray, N. R., Ripke, S., Mattheisen, M., Trzaskowski, M., Byrne, E. M., Abdellaoui, A., ... Consortium, the M. D. D. W. G. of the P. G. (2018). Genome-wide association analyses

identify 44 risk variants and refine the genetic architecture of major depression. *Nature Genetics*, 50(5), 668–681. <https://doi.org/10.1038/s41588-018-0090-3>

Zisook, S., Lesser, I., Stewart, J. W., Wisniewski, S. R., Balasubramani, G. K., Fava, M., ...

Rush, A. J. (2007). Effect of Age at Onset on the Course of Major Depressive Disorder.

American Journal of Psychiatry, 164(10), 1539–1546.

<https://doi.org/10.1176/appi.ajp.2007.06101757>

TABLES

Table 1. Logistic regressions of PRS z-scores for membership to each trajectory class

Class	Estimate	Standard error	Statistic	P-value	OR (95% CI)
High/reversing	0.182	0.0508	3.59	3.32e⁻⁴	1.20 (1.09-1.33)
Late childhood peak	-0.0136	0.0696	-0.20	8.45e ⁻¹	0.90 (0.86-1.13)
High/renitent	0.166	0.0271	6.14	8.50e⁻¹⁰	1.18 (1.12-1.25)
Minimal symptoms	-0.152	0.0241	-6.32	2.59e⁻¹⁰	0.86 (0.82-0.90)
Adolescent spike	0.0746	0.0764	0.98	3.29e ⁻¹	1.08 (0.93-1.25)
Childhood decrease	-0.111	0.0497	-2.23	2.59e⁻²	0.90 (0.81-0.99)

*Six logistic regressions were performed to assess the effect of PRS on membership to each specific trajectory class (class coded as 0, 1).

Table 2. Odds of reference class assignment for each one standard deviation difference in standardized PRS.

	Reference Category				
	Minimal symptoms	Childhood decrease	Late childhood peak	Adolescent spike	High/reversing
Minimal symptoms					
Childhood decrease	1.00 (0.88 - 1.14)				
Late childhood peak	1.06 (0.88 - 1.28)	1.06 (0.86 - 1.31)			
Adolescent spike	1.17 (0.98 - 1.40)	1.17 (0.96 - 1.44)	1.10 (0.86 - 1.41)		
High/reversing	1.23* (1.07 - 1.41)	1.23[#] (1.04 - 1.46)	1.16 (0.93 - 1.44)	1.05 (0.85 - 1.30)	
High/renitent	1.19** (1.09 - 1.29)	1.19* (1.04 - 1.35)	1.12 (0.92 - 1.35)	1.01 (0.84 - 1.22)	0.96 (0.83 - 1.12)

** FDR < 1e-4; * FDR < 0.05; #FDR < 0.1

FIGURES

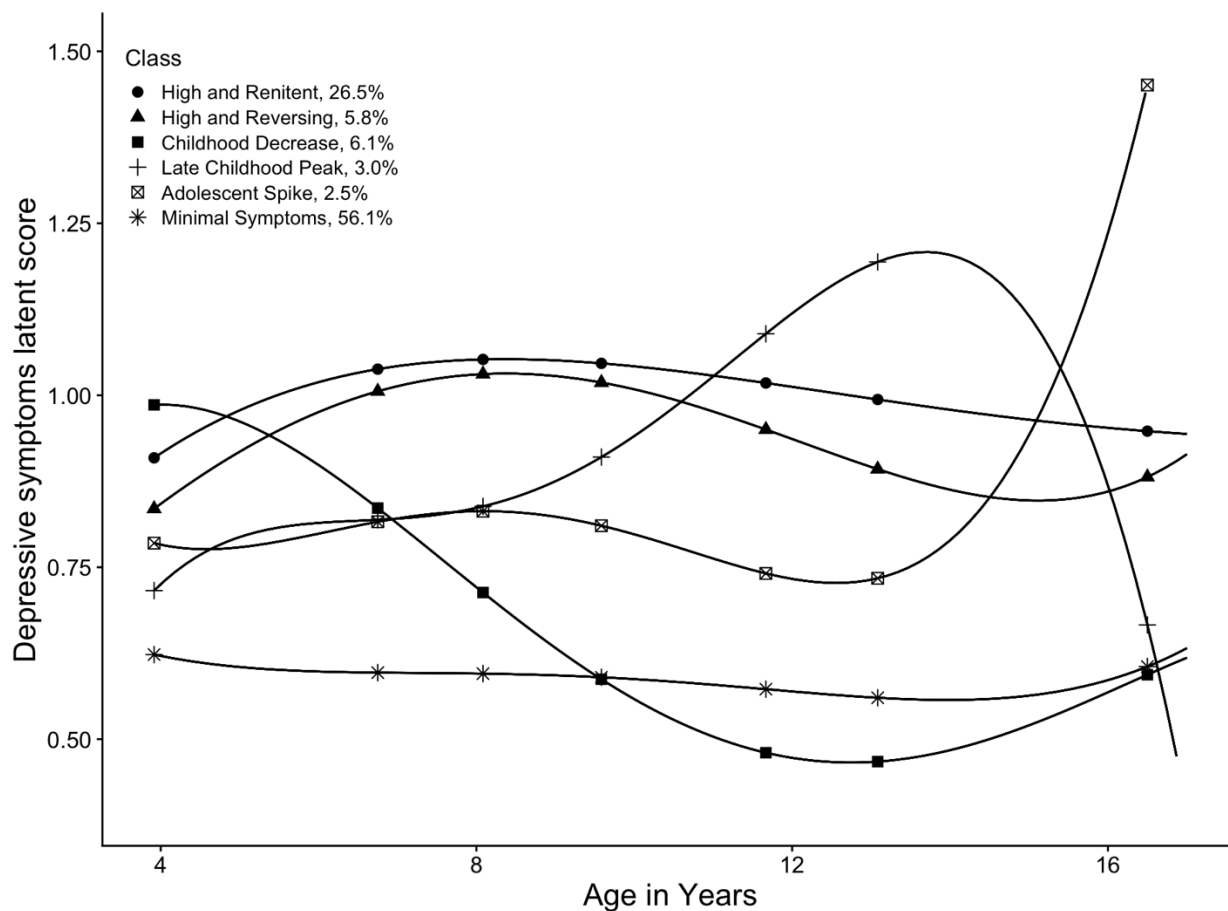


Figure 1. Classes of depressive symptom trajectories. Six classes were characterized using latent score analysis across ages 4 to 16.5 in 7,308 youths of the ALSPAC cohort. The latent scores are a composite score that captures depressive symptoms measured from the SDQ and SMFQ, where youth with higher scores have more depressive symptoms at that specific age. The proportion of individuals assigned to each trajectory class is shown in the figure legend.

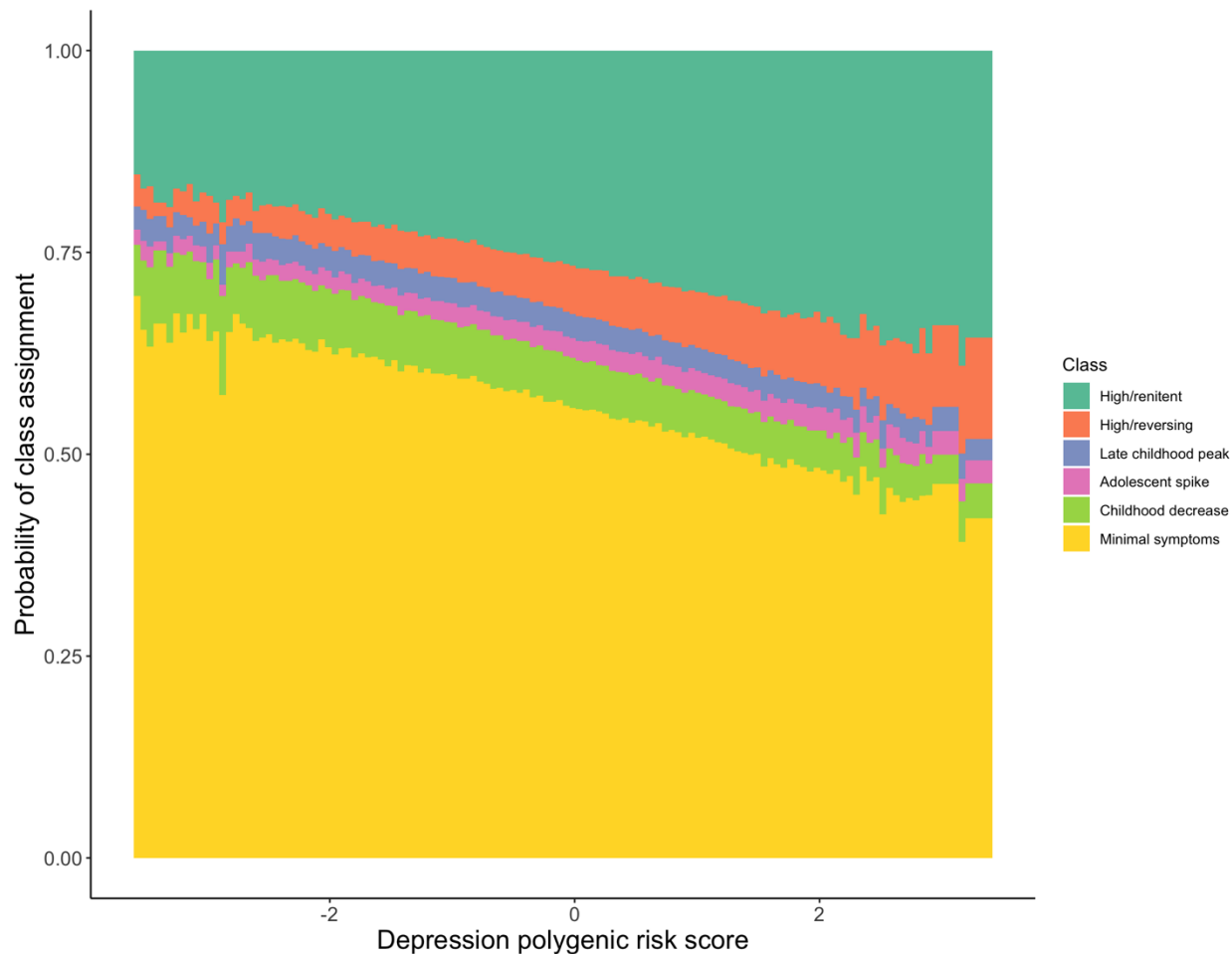


Figure 2. The probability of assignment to depressive symptom trajectory classes was skewed with PRS. The probability of class assignment was determined using logistic regressions that compared the z-scores of depression polygenic risk score for each class to the remainder of the distribution (i.e., youth across all other classes). Negative PRS indicate lower genetic propensity to MDD whereas positive PRS indicate higher genetic propensity. The high/renitent and high/reversing classes showed significant skews towards positive PRS, while the childhood decrease and minimal symptoms classes showed significant skews towards negative PRS.