

## **Cognitive impairments in sporadic cerebral small vessel disease (SVD): a systematic review and meta-analysis of cohorts with stroke, dementia and non-clinical presentations of SVD**

Authors: Olivia KL Hamilton, MSc<sup>1,2,5</sup>, Dr Ellen V Backhouse, PhD<sup>1,5</sup>, Esther Janssen, MSc<sup>1,5</sup>, Angela CC Jochems, MSc<sup>1,5</sup>, Caragh Maher, MSc<sup>1,5</sup>, Anna J Stevenson, MSc<sup>3,4,5</sup>, Tuula E Ritakari, BSc<sup>1,5</sup>, Lihua Xia, MSc<sup>6</sup>, Professor Ian J Deary, PhD<sup>2,6</sup>, Professor Joanna M Wardlaw, MD<sup>1,2,5</sup>.

<sup>1</sup>Centre for Clinical Brain Sciences, University of Edinburgh, Chancellor's Building, 49 Little France Crescent, Edinburgh, UK, EH16 4SB

<sup>2</sup>Lothian Birth Cohorts, University of Edinburgh, 7 George Square, Edinburgh, UK, EH8 9JZ

<sup>3</sup>Centre for Genomic and Experimental Medicine, MRC Institute of Genetics and Molecular Medicine, University of Edinburgh, Western General Hospital Campus, Crewe Road, Edinburgh, UK, EH4 2XU

<sup>4</sup>Centre for Discovery Brain Sciences, University of Edinburgh, Hugh Robson Building, 15 George Square, Edinburgh, UK, EH8 9XD

<sup>5</sup>Edinburgh Dementia Research Centre in the UK Dementia Research Institute, Chancellor's Building, 49 Little France Crescent, Edinburgh, UK, EH16 4SB

<sup>6</sup>Department of Psychology, University of Edinburgh, 7 George Square, Edinburgh, UK, EH8 9JZ

Corresponding author:

Joanna Wardlaw

Centre for Clinical Brain Sciences, University of Edinburgh, Chancellor's Building, 49 Little France Crescent, Edinburgh, UK, EH16 4SB

Email: [joanna.wardlaw@ed.ac.uk](mailto:joanna.wardlaw@ed.ac.uk)

Tel: +44 (0)131 465 9570

## Abstract

**Background:** Cognitive impairment is a key clinical feature of cerebral small vessel disease (SVD), but the full range of SVD-related cognitive impairments is unclear, and little is known about how they might vary across clinical and non-clinical manifestations of SVD.

**Methods:** In systematic searches of OVID MEDLINE, Embase, and PsychINFO from 1<sup>st</sup> January 1985 to 6<sup>th</sup> October 2019, we identified studies reporting cognitive test results for study participants with SVD and control participants without SVD. Using standardised group-level cognitive test data, we performed random effects meta-analyses in seven cognitive domains to test whether cognitive test scores differed between SVD and control groups. We conducted meta-regression analyses to test whether differences in age, education, or vascular risk factors between SVD and control groups, or whether different clinical manifestations of SVD (e.g. stroke, cognitive impairment, or non-clinical presentations) accounted for cognitive effect sizes.

**Findings:** Of 8562 studies identified, we included 69 studies from six continents, published in four languages. These studies included 3229 participants with SVD and 3679 controls. Meta-analyses demonstrated that on average, control groups outperformed SVD cohorts on cognitive tests in all cognitive domains examined: executive function (estimate: -0.928; 95%CI: -1.08, -0.78); processing speed (-0.885; -1.17, -0.60); delayed memory (-0.898; -1.10, -0.69); language (-0.808; -1.01, -0.60); visuospatial ability (-0.720; -0.96, -0.48); reasoning (-0.634; -0.93, -0.34); and attention (-0.622; -0.94, -0.31; all  $p \leq 0.001$ ). Meta-regression analyses suggested that differences in years of education between SVD and control groups may account for a proportion of the differences in performance on tests of executive function, visuospatial ability and language, and that cohorts with cognitive impairments performed more poorly on tests of executive function, delayed memory and visuospatial ability than cohorts with stroke or non-clinical presentations of SVD.

**Interpretation:** Participants with SVD demonstrated poorer cognitive performance relative to control groups in all cognitive domains we examined. This effect was present for all presentations of SVD, reinforcing the need to test a range of cognitive domains in both clinical and research settings. Lower levels of education in SVD versus control participants may contribute to these effects, highlighting the need to account for educational level in the assessment of SVD-related cognitive impairment.

**Funding:** None.

## **Introduction**

Cerebral small vessel disease (SVD) refers to a collection of neuroimaging and neuropathological abnormalities found in the brain's white and deep grey matter. White matter hyperintensities and lacunes of presumed vascular origin, cerebral microbleeds and enlarged perivascular spaces likely reflect multiple pathological changes affecting the brain's small vessels, such as endothelial dysfunction, impaired cerebral blood flow, and reduced vessel pulsatility. The relationships between these mechanisms are complex and not yet fully understood<sup>1,2</sup>. Whereas the radiological markers of SVD have previously been considered clinically 'silent', their presence has been associated with cognitive impairment, depression, impaired gait and balance, and urinary incontinence<sup>3,4</sup>.

SVD has varied clinical manifestations - it causes approximately 25% of acute ischaemic stroke, increases the risk of recurrent ischaemic stroke, and associates with poorer functional outcomes post-stroke<sup>5,6</sup>. SVD is also a major cause of vascular dementia (VaD), and increases the risk of incident dementia<sup>6</sup>. In most cases, SVD manifests sub-clinically, with few overt symptoms. For example, cohort studies of healthy older individuals often include subpopulations who show features of SVD on neuroimaging, but have no history of stroke,

dementia, and no subjective cognitive concerns. The term vascular cognitive impairment (VCI) encompasses these various presentations of SVD, referring to any severity of cognitive impairment (from subclinical deficits to dementia) with underlying vascular contributions<sup>7,8</sup>.

The cognitive manifestation of VCI is often characterised as deficits in executive function and speed of information processing, with little attention paid to other domains of cognitive ability<sup>9,10</sup>. Studies supporting this suggestion are often small and focus on a narrowly-defined subtype of SVD, or on those with a high disease burden, who may not represent the full spectrum of sporadic SVDs. Despite increasing recognition of cerebrovascular contributions to non-vascular and mixed dementias<sup>11</sup>, individuals with cerebrovascular presentations of SVD are rarely considered in the same study as those with predominantly cognitive presentations, so little is known about how cognitive impairments may differ between SVD subtypes. In part, this is due to differing routes into clinical care and so, into clinical research. In addition to this, variation in naming conventions for SVD lesions<sup>12</sup> impairs between-study comparisons.

To examine the nature of SVD-related cognitive impairment across multiple cognitive domains and to account for its varied clinical and non-clinical presentations, we conducted a systematic review and meta-analysis of domain-specific cognitive abilities in individuals with clinical or radiological signs of SVD. We aimed to clarify the nature of SVD-related cognitive impairment, to assess contributions of underlying factors such as age, level of education or burden of vascular risk, and to assess whether SVD-related cognitive impairments vary according to clinical, or non-clinical presentations of the disease.

## Methods

We performed this systematic review and meta-analysis in accordance with PRISMA guidelines. The review protocol is registered on the PROSPERO database (registration number: CRD42017080215).

### Search strategy and study selection criteria

We developed and tested a detailed search strategy (Appendix A) to identify studies reporting the results of cognitive testing in a cohort with SVD (performed contemporaneous with identification of SVD), and a control cohort with no history of neurological or psychiatric conditions. We searched OVID MEDLINE, Embase and PsychINFO, for human studies published in any language from 1<sup>st</sup> January 1985, when MRI became more widely available in clinical practice, to 6<sup>th</sup> October 2019. To identify additional studies, we checked the reference lists of relevant review articles and hand-searched the previous 7 years of *Stroke* and the *Journal of Cerebral Blood Flow and Metabolism*. Study inclusion and exclusion criteria are presented in Appendix B.

### Data Analysis

Two authors (OH and EB) independently extracted the following information: country in which the study was carried out; recruitment setting; study inclusion/exclusion criteria; clinical diagnosis or other descriptive characterisation of the SVD cohort(s) (including duration of symptoms/diagnosis and diagnostic criteria); sample size of the SVD and control groups; group-level demographic data for the SVD and control groups (age, sex, education); group-level data on vascular risk factors (% cohorts with hypertension, diabetes, hypercholesterolemia, and smoking status), group-level data on WMH burden, and group-level cognitive test scores for SVD and control groups. The vast majority of cognitive data

were presented as mean and standard deviation. To avoid introducing additional heterogeneity into the meta-analysis dataset, we did not convert cognitive data presented as median and range to mean and standard deviation - instead these data are summarised in Appendix C. Where individual participant data were presented, we calculated the mean and standard deviation of the variables we extracted.

Two authors (OH and AJ) independently grouped cognitive data into seven domains: information processing speed, executive function, delayed memory, attention, reasoning, visuospatial ability and language, and resolved disagreements by consensus. It is important to note that subdomains of cognitive ability are not discrete, and that individual cognitive tests often engage abilities across multiple domains – for transparency, test groupings provided in Appendix D. Studies reported a wide range of memory tests, including tests of long-term, short-term and working memory. To reduce heterogeneity in the dataset we included only tasks featuring a delayed recall/recognition component, as these were the most frequently reported memory tasks. We excluded data for which we could not identify the specific test score (e.g. where authors reported results for a Trail Making task, but did not specify whether the score was for Trail Making A, Trail Making B, or Trail Making A-B). We also excluded data for which we could not discern whether a higher or lower score indicated better performance. Where studies reported multiple scores for one cognitive test (e.g. for the Wisconsin Card Sorting Test: number of perseverative errors, total number of errors, number of categories etc.), we included the score most commonly reported in the meta-analysis dataset.

## **Effect sizes**

We calculated a standardised mean difference to represent the difference between performance of the SVD and control cohorts on each cognitive test. We multiplied the SMD by -1 for tests on which a lower score indicated better performance.

## **Meta-analysis models**

We ran seven separate random effects meta-analyses to assess the difference in performance between SVD and control groups on cognitive tests in each cognitive domain. We conducted all meta-analyses using the robumeta package<sup>13</sup> in R version 3.6.1<sup>14</sup>. robumeta permits the meta-analysis of multiple effect sizes from one study by employing robust variance estimation (RVE) to account for their statistical dependency. This approach maximises the amount of data derived from a single study, increasing the statistical power of each meta-analysis. Dependency in our dataset arose from the inclusion of multiple effect sizes from the same study sample, and the inclusion of studies which used the same control group for comparison with multiple SVD groups. Covariance matrices for multiple outcomes arising from a single study are rarely published, therefore, robumeta imputes a user-specified value for the within-study effect size correlation. We were conservative in our choice of within-study effect size correlation - we specified rho as 0.8 and carried out sensitivity analyses in robumeta, which impute rho values at increments of 0.1 to test whether this alters the model results. For all analyses, we weighted effect sizes according to a correlated effects dependence structure within the robumeta package and used small sample size corrections. Small sample corrections, which correct both the residuals and the degrees of freedom (df) used in the RVE, increase the accuracy of models including less than 40 studies<sup>13</sup>. After correction, if the Satterthwaite df for the model are less than four, the p value is considered unreliable due to the probability of type I error being greater than 0.05. In the proceeding

analyses, results of models with Satterthwaite  $df < 4$  were considered unreliable. We report  $I^2$  and  $\tau^2$  as measures of heterogeneity.

### **Meta-regression models**

We carried out two secondary analyses to examine the following study-level and cohort-level variables:

#### 1) SVD presentation

To test whether the pooled study effect size differed according to SVD presentation, we grouped each SVD cohort into one of three categories below. We then entered SVD presentation as an ordinal predictor in the meta-regression model for each cognitive domain, with the cognitive impairment category acting as the reference group.

##### a) Predominantly cerebrovascular presentations of SVD

Cohorts in this group most commonly presented to clinical stroke or neurology services with symptoms of lacunar syndrome, with or without radiological evidence of corresponding vascular lesions. Other cohorts in this category had clinical diagnoses of SVD or subcortical ischaemic vascular disease.

##### b) Cognitive presentations of SVD

Cohorts in this group were identified on the basis of impaired cognitive ability ranging from mild cognitive impairment (MCI) to VaD. Typically, cohorts presented with cognitive impairment (according to clinical diagnosis, or objective cognitive testing) and either radiological evidence supporting a vascular aetiology, or multiple risk factors for cerebrovascular disease.



c) Non-clinical presentations of SVD

This group included cohorts with radiological evidence of SVD (WMH or lacunes of presumed vascular origin), but no clinical diagnosis. Typically, cohorts were community-dwelling older individuals recruited within a defined geographical region, or via community advertising. Several cohorts in this category presented to clinical services with non-specific symptoms such as dizziness or headache, but received no diagnosis upon examination.

2) Differences in age, education, hypertension and diabetes between the SVD and control cohorts

All extracted cognitive data were raw scores, unadjusted for demographic or vascular risk factors. Therefore, to test whether differences in age, education, hypertension and diabetes between SVD and control cohorts accounted for study effect sizes, we calculated the difference in age, years of education, % sample with hypertension, and % sample with diabetes (e.g. difference in age = mean age of control cohort – mean age of SVD cohort), and entered these variables as predictors in separate univariate meta-regression models for each cognitive domain.

### **Quality assessment**

Quality assessment criteria (see Appendix E) were devised according to STROBE guidelines. Two authors (OH and EJ) independently assessed the quality of included publications and resolved disagreements by consensus. To assess whether the inclusion of lower quality studies affected the results of the meta-analyses, we re-ran meta-analysis models excluding studies with quality scores lower than the median quality score of the meta-analysis sample.

## **Role of the funding source**

The funders associated with this study had no role in study design, data collection, data analysis, data interpretation, or writing of the report. The corresponding author had full access to all the data in the study and had final responsibility for the decision to submit for publication.

## **Results**

Our literature search identified 8562 studies (see figure 1). After screening titles and abstracts, the full texts of 1359 publications were assessed against inclusion and exclusion criteria. We extracted data from 69 studies<sup>15–83</sup>, which reported data for 89 cohorts with SVD (n=3229), and 71 control cohorts (n=3679). Characteristics of included studies are presented in table 1. Studies were conducted in 18 countries across six continents (Africa=1; Asia=31; Australia=1; Europe=18; North America=16; South America=2), and published in four languages.

Demographic data for the 89 SVD and 71 control cohorts are presented in table 2. We did not test for differences in age, sex, level of education, or vascular risk factors between the SVD and control groups as some studies only reported these data for the SVD group, therefore, comparisons would not include all participants contributing cognitive data to the meta-analyses. Almost all studies reported participants' mean age and sex, but the reporting of educational level, vascular risk factors, and WMH burden was less complete (see Table S1).

Tests of executive function were the most commonly reported cognitive outcomes (58 studies reported 188 cognitive outcomes), followed by tests of delayed memory (41 studies, 98 outcomes), processing speed (37 studies, 88 outcomes), visuospatial ability (27 studies, 50

outcomes), language (24 studies, 42 outcomes), reasoning (16 studies, 25 outcomes), and attention (12 studies, 19 outcomes; see table S2).

We performed meta-analyses to estimate the differences in performance on cognitive tests, between cohorts with SVD and control cohorts, in seven cognitive domains. A negative effect size estimate indicates that on average SVD cohorts performed more poorly on cognitive tasks than control cohorts, an effect size of zero indicates no difference between the two groups, and a positive effect size indicates that on average the control cohorts performed more poorly on cognitive tasks than SVD cohorts. The pooled estimated effect size for each meta-analysis model demonstrated that the control cohorts outperformed the SVD cohorts on cognitive tasks in all seven domains (see table 3, and supplementary figures S1 – S7). Sensitivity analyses suggested that pooled estimated effect sizes were robust to different within-study effect size correlations – varying the values of rho between 0 and 1 altered the SE of the pooled effect size and the  $\tau^2$  estimate at the second or third decimal place.  $I^2$  values from the meta-analysis models were large, indicating a high proportion of inconsistency between effect sizes within each domain.

The meta-analysis dataset included 26 cohorts with predominantly cerebrovascular presentations of SVD, 31 cohorts with cognitive presentations of SVD, and 32 cohorts with non-clinical presentations of SVD. Diagnostic and radiological criteria varied between studies – where available this information was extracted and is presented in Appendix F. Demographics of the three SVD presentation categories are presented in table S3. There were no differences in years of education, or prevalence of hypertension or diabetes between the three SVD presentation categories, but cohorts with a cognitive presentation of SVD were significantly older than those with non-clinical presentations of SVD ( $p=0.002$ ). The results

of meta-regression models assessing differences in cognitive performance between cohorts with cerebrovascular, cognitive and non-clinical presentations of SVD indicated that cohorts with a cognitive presentation of SVD performed worse on tests of delayed memory than cohorts with cerebrovascular and non-clinical presentations (see table S4). The effect size for delayed memory was 0.83 standard deviations greater for the cerebrovascular cohorts (95% CI: 0.44, 1.21;  $p < 0.001$ ) and 0.85 standard deviations greater for non-clinical cohorts (95% CI: 0.40, 1.29;  $p = 0.001$ ), than cohorts with a cognitive presentation of SVD. Cohorts with a cognitive presentation of SVD also performed more poorly on tests of executive function and visuospatial ability than the non-clinical cohorts. The effect size was 0.46 standard deviations greater in the domain of executive function (95% CI: 0.07, 0.86;  $p = 0.023$ ), and 0.68 standard deviations greater in the domain of visuospatial ability (95% CI: 0.30, 1.01;  $p = 0.002$ ) for the non-clinical cohorts than the cohorts with a cognitive presentation of SVD. Including SVD presentation as a predictor in meta-regression models had little effect on study heterogeneity.  $I^2$  values increased by 0.4% and 2.2% in the domains of processing speed and reasoning, but decreased by 5.5%, 5.9% and 11.2% in the domains of attention, memory and language, when compared to univariate meta-analysis models, and to a lesser extent in the domains of executive function and visuospatial ability. Overall, however,  $I^2$  values remained large.

We carried out further meta-regression analyses to test associations between differences in age, years of education, and prevalence of hypertension and diabetes between SVD and control cohorts, and cognitive effect sizes (see table S5). Results indicated that for every 1 year of difference in education between SVD and control groups, the effect size decreased (indicating superior performance of the control groups) by an estimated 0.24 standard deviations in the domain of executive function (95% CI: -0.38, -0.10;  $p = 0.003$ ), 0.28 standard

deviations in the domain of visuospatial ability (95% CI: -0.46, -0.10;  $p=0.009$ ), and 0.31 standard deviations in the domain of language (95% CI: -0.46, -0.16;  $p=0.001$ ). Including difference in years of education as a predictor in these models increased  $I^2$  values by approximately 2% in the domains of processing speed and delayed memory, but reduced  $I^2$  values by approximately 13% in the domain of visuospatial ability and language, although  $I^2$  values remained large. Meta-regression models for attention and reasoning produced  $df < 4$ , so their results were considered unreliable.

The majority of the meta-regression models assessing the influence of age on cognitive effect size produced  $df < 4$ , therefore, we further investigated this by re-running meta-analysis models excluding studies in which SVD and control groups were not matched for age. In these analyses effect size estimates were similar to the initial meta-analysis models and all models remained significant.  $I^2$  values reduced in all domains except reasoning and visuospatial ability, but remained large (see table S6).

Study quality was rated on a scale from 0-8. The mean study quality score was 4.97 (median 5, range 2-8). As a sensitivity analysis, we re-ran meta-analysis models excluding all studies with a quality score  $< 5$ . The magnitudes of pooled estimated effect sizes were comparable to those using the full meta-analysis dataset, and all models remained significant (see table S7).  $I^2$  values reduced by a small amount in the domains of executive function, visuospatial ability, attention and language, but increased in all other domains.

## **Discussion**

Based on 3229 individuals with SVD and 3679 control participants from 69 studies, our meta-analyses demonstrated that on average individuals with SVD perform more poorly than

controls on cognitive tests in the domains of processing speed, executive function, delayed memory, visuospatial ability, reasoning, attention, and language. These findings support the notion that SVD-related cognitive impairment is global, affecting all examined cognitive domains, and mirrors the global effects of SVD seen on brain imaging<sup>84,85</sup>. This global cognitive impairment was present for cohorts with cerebrovascular, cognitive, and non-clinical presentations of SVD, although cohorts with a cognitive presentation of SVD had greater deficits in executive function, delayed memory, and visuospatial ability.

Our findings concur with those of a recent meta-analysis of 27 studies by Vasquez and Zakzanis<sup>86</sup>, which compared cognitive abilities of participants with vascular cognitive impairment without dementia (n=794) and control subjects (n=1750), finding deficits (from largest to smallest) in processing speed, immediate memory, delayed memory, general cognitive ability, language, executive function, visuospatial ability and working memory. Together with our meta-analysis, these results suggest that cognitive changes associated with SVD extend beyond impaired executive function and slowed processing speed to include multiple other domains, which often remain untested due to the perception that they are less affected in vascular cognitive impairment.

Results of our meta-regression analyses suggested that differences in years of education between SVD and control groups account for a proportion of the differences in cognitive test scores in the domains of memory, executive function, and visuospatial ability. All other cognitive domains showed a similar direction of effect (albeit non-significant) except processing speed, which could support the suggestion that processing speed might be less amenable to beneficial effects of education than other cognitive abilities<sup>87</sup>. A recent meta-analysis of early life risk factors in cerebrovascular disease found that fewer years of

education was associated with increased MRI markers of SVD<sup>88</sup>. Similarly, our findings also highlight education as a (potentially modifiable) risk factor for SVD-related cognitive impairment, emphasising the importance of accounting for an individuals' level of education in analyses of cognitive change over time, or comparisons of cognitive ability between groups.

An estimation of cognitive ability prior to the onset of decline is another potential confound in assessments of cognitive decline, as any change in cognitive ability will be relative to an individuals' prior level<sup>89</sup>. Despite this, prior cognitive ability is seldom considered in clinical studies. Of the 69 studies included in our meta-analysis, only seven<sup>15,19,21,49,50,60,68</sup> estimated prior cognitive ability using a test such as the National Adult Reading Test (NART), and only two of these studies included this score as a covariate in their analyses. As the NART is a vocabulary task, it was included as a cognitive outcome in our meta-analysis of language. Therefore, our finding that individuals with SVD score more poorly on tests of language than control cohorts could reflect lower premorbid cognitive ability in the SVD cohorts, in addition to any decline in language abilities as a result of SVD.

A key strength of this study is that we did not pre-select literature that focuses on a certain lesion type, or clinical, cognitive, or behavioural presentation of SVD. Additionally, we included studies published in any language, which enabled us to analyse data from 18 countries in six continents. This broad approach to the characterisation of SVD aimed to capture a range of cohorts that represent the diversity of SVD presentations in different cultural and ethnic groups, and enable us to apply our findings to a range of clinical contexts. However, our study also has several important limitations. We observed high levels of heterogeneity in our meta-analyses. Whereas including SVD presentation and differences in

demographic and vascular risk factors between SVD and control cohorts as predictors in meta-regression analyses reduced the  $I^2$  values of some models, we were unable to account for the vast majority of the heterogeneity we observed. One reason for this could be our use of group-level demographic and vascular risk data, which may limit the power to detect interactions between individual-level covariates and cognitive effect sizes. Meta-analytic approaches utilising individual patient data are increasingly popular, but rely upon the availability of patient-level datasets, which in our sample were rare. Incomplete reporting of vascular risk data also limited our assessment of their impact on cognitive effect sizes. Approximately half of all included studies reported history of hypertension and diabetes, but only one third of studies reported smoking status, despite its known association with SVD progression<sup>1</sup>. Similarly, we were unable to assess whether age at presentation to clinical services accounted for apparent differences in performance on memory tests between cohorts with a cognitive presentation of SVD and other SVD presentations - very few studies reported data on disease duration, with the exception of eight studies of stroke populations that reported average/minimum/maximum duration since stroke onset<sup>21,33,61,64,65,70,75</sup>. We were also limited by our reliance on the quality of study reporting; our literature search identified three studies whose results were inaccurately reported, or were statistically implausible and so, were excluded from our analyses<sup>90-92</sup>.

SVD-related cognitive impairment extends beyond deficits in processing speed and executive function - it affects a broader range of cognitive domains than previously considered. Our findings support the use of cognitive test batteries that cover a range of cognitive domains to fully investigate the extent of SVD-related cognitive impairment. Future investigations should include individuals with varying presentations of SVD, to represent the diversity of its clinical and non-clinical manifestations, and to enable more accurate characterisation and



comparison of SVD subtypes. Accounting for educational level, or estimates of premorbid cognitive ability is essential for accurate assessment of SVD-related cognitive ability, and more complete reporting of vascular risk data will enable further exploration of the relative contributions of vascular risk factors to vascular cognitive impairment.

### **Contributors**

The study was designed by OH and supervised by JMW and IJD. OH conducted the literature search and OH, EB, TR, AS, and CM screened papers for inclusion in the review. OH, EB, XL and EJ extracted data from eligible papers. OH and AJ categorised cognitive test data into domains. OH analysed and interpreted the data with contributions from JMW and IJD. OH wrote the first draft of the manuscript – all authors contributed to later versions.

### **Declaration of interests**

The authors declare no conflicts of interest.

### **Acknowledgements**

We would like to thank Rana Fetit, Noboru Komiyama, Masoud Shirali and Maria Valdéz Hernández, whose assistance with screening non-English texts for inclusion in the review was greatly appreciated. Thanks also Ezgi Tanriver Ayder and Francesca Chappell for their advice on statistical aspects of the meta-analysis. OH is funded by the College of Medicine and Veterinary Medicine at the University of Edinburgh, and is supported by the Wellcome Trust through the Translational Neuroscience PhD programme at the University of Edinburgh. JMW is supported by the Row Fogo Charitable Trust, Fondation Leducq (Perivascular Spaces Transatlantic Network of Excellence), and EU Horizon 2020 (SVDs@Target) and the MRC UK Dementia Research Institute at the University of

Edinburgh. IJD is partly supported by grants that contribute to the Lothian Birth Cohorts (Age UK [Disconnected Mind grant], Medical Research Council [MR/R024065/1], and national Institutes of Health [1R01AG054628-01A1.]). AS and TR are supported by funding from the Wellcome Trust 4-year PhD in Translational Neuroscience [108890/Z/15/Z].

## References

1. Wardlaw JM, Smith C, Dichgans M. Small vessel disease: mechanisms and clinical implications. *Lancet Neurol*. 2019;18(7):684-696.
2. Brown R, Benveniste H, Black SE, et al. Understanding the role of the perivascular space in cerebral small vessel disease. *Cardiovasc Res*. 2018;114(11):1462-1473.
3. Debette S, Schilling S, Duperron MG, Larsson SC, Markus HS. Clinical Significance of Magnetic Resonance Imaging Markers of Vascular Brain Injury: A Systematic Review and Meta-analysis. *JAMA Neurol*. 2019;76(1):81-94.
4. Wallin A, Román GC, Esiri M, et al. Update on vascular cognitive impairment associated with subcortical small-vessel disease. *J Alzheimer's Dis*. 2018;62(3):1417-1441.
5. Pasi M, Cordonnier C. Clinical Relevance of Cerebral Small Vessel Diseases. *Stroke*. 2020;51(1):47-53.
6. Georgakis MK, Duering M, Wardlaw JM, Dichgans M. WMH and long-term outcomes in ischemic stroke: A systematic review and meta-analysis. *Neurology*. 2019;92(12):E1298-E1308.
7. van der Flier WM, Skoog I, Schneider JA, et al. Vascular cognitive impairment. *Nat Rev Dis Prim*. 2018;4:18003.
8. Gorelick PB, Scuteri A, Black SE, et al. Vascular contributions to cognitive impairment and dementia: A statement for healthcare professionals from the American Heart Association/American Stroke Association. *Stroke*. 2011;42(9):2672-2713.
9. Rosenberg GA, Wallin A, Wardlaw JM, et al. Consensus statement for diagnosis of subcortical small vessel disease. *J Cereb Blood Flow Metab*. 2016;36(1):6-25.
10. Peng D, Chen L, Chen X, et al. Clinical practice guideline for cognitive impairment of cerebral small vessel disease. *Aging Med*. 2019;2(2):64-73.
11. Brickman AM, Tosto G, Gutierrez J, et al. An MRI measure of degenerative and cerebrovascular pathology in Alzheimer disease. *Neurology*. 2018;91(15):E1402-E1412.
12. Wardlaw JM, Smith EE, Biessels GJ, et al. Neuroimaging standards for research into small vessel disease and its contribution to ageing and neurodegeneration. *Lancet Neurol*. 2013;12(8):822-838.
13. Fisher Z, Tipton E. robumeta: An R-package for robust variance estimation in meta-analysis. 2015. <http://arxiv.org/abs/1503.02220>.
14. R Core Team. R: A language and environment for statistical computing. 2019. <https://www.r-project.org/>.
15. Anderson JFI, Saling MM, Srikanth VK, Thrift AG, Donnan GA. Individuals with first-ever clinical presentation of a lacunar infarction syndrome: Is there an increased likelihood of developing mild cognitive impairment in the first 12 months after stroke? *J Neuropsychol*. 2008;2(Pt 2):373-385.
16. Atwi S, Metcalfe AWS, Robertson AD, Rezmovitz J, Anderson ND, MacIntosh BJ.

- Attention-related brain activation is altered in older adults with white matter hyperintensities using multi-echo fMRI. *Front Neurosci*. 2018;12(OCT):1-14.
17. Gainotti G, Ferraccioli M, Vita MG, Marra C. Patterns of neuropsychological impairment in MCI patients with small subcortical infarcts or hippocampal atrophy. *J Int Neuropsychol Soc*. 2008;14(4):611-619.
  18. Garrett KD, Browndyke JN, Whelihan W, et al. The neuropsychological profile of vascular cognitive impairment - No dementia: Comparisons to patients at risk for cerebrovascular disease and vascular dementia. *Arch Clin Neuropsychol*. 2004;19(6):745-757.
  19. Gonçalves C, Pinho MS, Cruz V, et al. Portuguese version of Wechsler Memory Scale-3rd edition's utility with demented elderly adults. *Appl Neuropsychol*. 2017;24(3):212-225.
  20. Graham NL, Emery T HJ. Distinctive Cognitive Profiles in Alzheimer's Disease and Subcortical Vascular Dementia. *J Neurol Neurosurg Psychiatry*. 2004;75:61-71.
  21. Hassan MA, Helmy SM, Rabah AM, Ameen AI, Helmy H. Assessment of patients with lacunar infarction: A magnetic resonance spectroscopic and psychometric study. *Egypt J Neurol Psychiatry Neurosurg*. 2010;47(1):1-10.
  22. Hsu YH, Huang CF, Lo CP, Wang TL, Yang CC, Tu MC. Frontal Assessment Battery as a Useful Tool to Differentiate Mild Cognitive Impairment due to Subcortical Ischemic Vascular Disease from Alzheimer Disease. *Dement Geriatr Cogn Disord*. 2016;42(5-6):331-341.
  23. Ishii H, Meguro K, Yamaguchi S, Ishikawa H, Yamadori A. Prevalence and cognitive performances of vascular cognitive impairment no dementia in Japan: The Osaki-Tajiri Project. *Eur J Neurol*. 2007;14(6):609-616.
  24. Jokinen H, Kalska H, Ylikoski R, et al. MRI-defined subcortical ischemic vascular disease: Baseline clinical and neuropsychological findings. *Cerebrovasc Dis*. 2009;27(4):336-344.
  25. Kim HJ, Park S, Cho H, et al. Assessment of extent and role of tau in subcortical vascular cognitive impairment using 18F-AV1451 positron emission tomography imaging. *JAMA Neurol*. 2018;75(8):999-1007.
  26. Kramer JH, Reed BR, Mungas D, Weiner MW, Chui HC. Executive dysfunction in subcortical ischaemic vascular disease. *J Neurol Neurosurg Psychiatry*. 2002;72(2):217-220.
  27. Bella R, Cantone M, Lanza G, et al. Cholinergic circuitry functioning in patients with vascular cognitive impairment - No dementia. *Brain Stimul*. 2016;9(2):225-233.
  28. Kuriyama N, Ozaki E, Mizuno T, et al. Association between  $\alpha$ -Klotho and Deep White Matter Lesions in the Brain: A Pilot Case Control Study Using Brain MRI. *J Alzheimer's Dis*. 2018;61(1):145-155.
  29. Ledesma-Amaya LI, Salvador-Cruz J, Rodríguez-Agudelo Y, Valencia-Flores M, Arauz A. Neuropsychological disorders associated with patients with lacunar infarct. *Acta Colomb Psicol*. 2014;17(2):43-52.
  30. Lee MJ, Seo SW, Na DL, et al. Synergistic effects of ischemia and  $\beta$ -amyloid burden on cognitive decline in patients with subcortical vascular mild cognitive impairment. *JAMA Psychiatry*. 2014;71(4):412-422.
  31. Lewine R, Hudgins P, Risch SC WE. Lowered attention capacity in young medically healthy men with magnetic resonance imaging brain hyperintensity signals. *Neuropsychiatry, Neuropsychol Behav Neurosci*. 1993;6(1):38-42.
  32. Li M, Huang B, Li J, Li H. Neuropsychological Characteristics of patients with leukoaraiosis. *Chinese J Clin Psychol*. 2001;9(3):161-163.
  33. Li C, Ling X, Liu S, et al. Abnormalities of magnetic resonance spectroscopy and

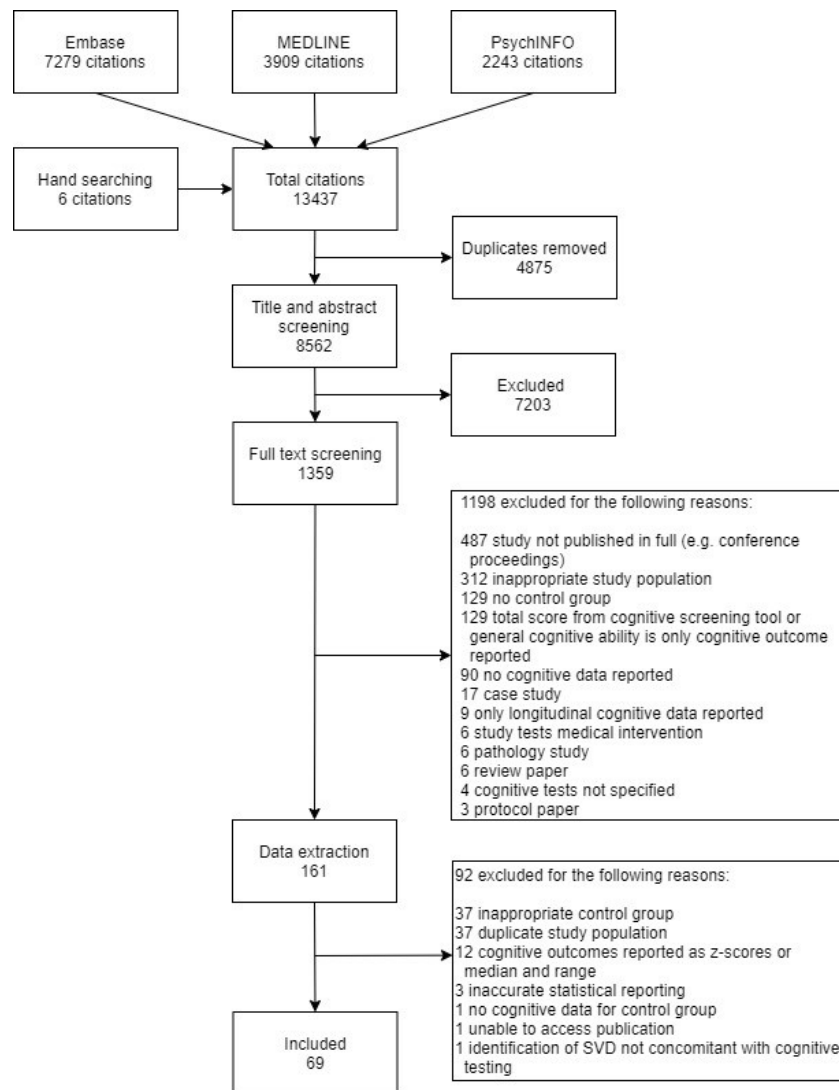
- diffusion tensor imaging are correlated with executive dysfunction in patients with ischemic leukoaraiosis. *J Clin Neurosci*. 2012;19(5):718-722.
34. Li H, Zheng X, Yang S, et al. The changes of early cognitive function and cerebral hemodynamics in patients with lacunar cerebral infarction. *Chinese J Cerebrovasc Dis*. 2015;12(9):468-473.
  35. Li Q, Zhao L, Hu F. Characteristics of cognitive impairment and the resting state functional MRI in patients with leukoaraiosis. *Chin Med J (Engl)*. 2017;97(45):3529-3533.
  36. Liu J, Xie R. Recovery of cognitive impairment and its influencing factors in patients after subcortical small vessel disease. *China J Cerebrovasc Dis*. 2008;5(8):341-345.
  37. Liu W, Hu P, Zhang W, Li X, Wu X, Wang K. The episodic memory monitoring in patients with white matter lesions. *China J Neurol*. 2015;48(4):302-306.
  38. Boone KB, Miller BL, Lesser IM, et al. Neuropsychological correlates of white-matter lesions in healthy elderly subjects. A threshold effect. *Arch Neurol*. 1992;49(5):549-554.
  39. Liu X, Chen L, Cheng R, et al. Altered functional connectivity in patients with subcortical ischemic vascular disease: A resting-state fMRI study. *Brain Res*. 2019a;1715:126-133.
  40. Liu R, Wu W, Ye Q, et al. Distinctive and pervasive alterations of functional brain networks in cerebral small vessel disease with and without cognitive impairment. *Dement Geriatr Cogn Disord*. 2019b;47(1-2):55-67.
  41. Maeshima S, Moriwaki H, Ozaki F, Okita R, Yamaga H, Ueyoshi A. Silent cerebral infarction and cognitive function in middle-aged neurologically healthy subjects. *Acta Neurol Scand*. 2002;105(3):179-184.
  42. Nebes RD, Snitz BE, Cohen AD, et al. Cognitive aging in persons with minimal amyloid- $\beta$  and white matter hyperintensities. *Neuropsychologia*. 2013;51(11):2202-2209.
  43. Nordahl CW, Ranganatha C, Yonelinas AP, DeCarli C, Reed BR, Jagust WJ. Different mechanisms of episodic memory failure in mild cognitive impairment. *Neuropsychologia*. 2005;43(11):1688-1697.
  44. Nordlund A, Rolstad S, Klang O, Lind K, Hansen S, Wallin A. Cognitive Profiles of Mild Cognitive Impairment With and Without Vascular Disease. *Neuropsychology*. 2007;21(6):706-712.
  45. Oguro H, Okada K, Yamaguchi S, Kobayashi S. A six year follow-up study on the influence of silent ischemic brain lesions on cognitive function and brain atrophy in elderly people. *Japanese J Geriatr*. 2000;37(4):298-303.
  46. Pascual B, Prieto E, Arbizu J, Marti-Clement J, Olier J, Masdeu JC. Brain Glucose Metabolism in Vascular White Matter Disease With Dementia. *Stroke*. 2010;41(12):2889-2893.
  47. Pinkhardt EH, Issa H, Gorges M, et al. Do eye movement impairments in patients with small vessel cerebrovascular disease depend on lesion load or on cognitive deficits? A video-oculographic and MRI study. *J Neurol*. 2014;261(4):791-803.
  48. Price CC, Garrett KD, Jefferson AL, et al. Leukoaraiosis severity and list-learning in dementia. *Clin Neuropsychol*. 2009;23(6):944-961.
  49. Brookes RL, Herbert V, Paul S, Hannesdottir K, Markus HS, Morris RG. Executive dysfunction, awareness deficits and quality of life in patients with cerebral small vessel disease: A structural equation model. *Neuropsychology*. 2014;28(2):247-253.
  50. Quinque EM, Arélin K, Dukart J, et al. Identifying the neural correlates of executive functions in early cerebral microangiopathy: A combined VBM and DTI study. *J Cereb Blood Flow Metab*. 2012;32(10):1869-1878.
  51. Rao SM, Mittenberg W, Bernardin L, Haughton V, Leo GJ. Neuropsychological Test

- Findings in Subjects With Leukoaraiosis. *Arch Neurol*. 1989;46(1):40-44.
52. Schmidt R, Fazekas F, Offenbacher H, Dusek T, Zach E, Reinhart B GP et al. Neuropsychologic correlates of MRI white matter hyperintensities: a study of 150 normal volunteers. *Neurology*. 1993;43(12):2490-2494.
  53. Seo SW, Ahn J, Yoon U, et al. Cortical thinning in vascular mild cognitive impairment and vascular dementia of subcortical type. *J Neuroimaging*. 2010;20(1):37-45.
  54. Sierra C, De La Sierra A, Salamero M, Sobrino J, Gómez-Angelats E, Coca A. Silent cerebral white matter lesions and cognitive function in middle-aged essential hypertensive patients. *Am J Hypertens*. 2004;17(6):529-534.
  55. Squarzoni P, Tamashiro-Duran J, Duran F, et al. High frequency of silent brain infarcts associated with cognitive deficits in an economically disadvantaged population. *Clinics*. 2017;72(08):474-480.
  56. Sudo FK, Alves CEO, Alves GS, et al. White matter hyperintensities, executive function and global cognitive performance in vascular mild cognitive impairment. *Arq Neuropsiquiatr*. 2013;71(7):431-436.
  57. Sun X, Liang Y, Wang J, et al. Early frontal structural and functional changes in mild white matter lesions relevant to cognitive decline. *J Alzheimer's Dis*. 2014;40(1):123-134.
  58. Tupler LA, Logue PE, Fagan SM, Djang WT, Coffey CE. Neuropsychological Importance of Subcortical White Matter Hyperintensity. *Arch Neurol*. 1992;49(12):1248-1252.
  59. van Swieten JC, Geyskes GG, Derix MMA, et al. Hypertension in the elderly is associated with white matter lesions and cognitive decline. *Ann Neurol*. 1991;30(6):825-830.
  60. Brookes RL, Hollocks MJ, Khan U, Morris RG, Markus HS. The Brief Memory and Executive Test (BMET) for detecting vascular cognitive impairment in small vessel disease: A validation study. *BMC Med*. 2015;13(1):1-8.
  61. van Zandvoort MJE, de Haan E, van Gijn J, Kappelle LJ. Cognitive functioning in patients with a small infarct in the brainstem. *J Int Neuropsychol Soc*. 2003;9(3):490-494.
  62. van Zandvoort MJE, van der Grond J, Kappelle LJ, de Haan EHF. Cognitive deficits and changes in neurometabolites after a lacunar infarct. *J Neurol*. 2005;252(2):183-190.
  63. Villeneuve S, Massoud F, Bocti C, Gauthier S, Belleville S. The nature of episodic memory deficits in MCI with and without vascular burden. *Neuropsychologia*. 2011;49(11):3027-3035.
  64. Wolfe N, Linn R, Babikian VL, Knoefel JE, Albert ML. Frontal Systems Impairment Following Multiple Lacunar Infarcts. *Arch Neurol*. 1990;47:129-132.
  65. Wong A, Mok VCT, Tang WK, Lam WWM, Wong KS. Comparing Mattis dementia rating scale - Initiation / perseveration subset and frontal assessment battery in stroke associated with small vessel disease. *J Clin Exp Neuropsychol*. 2007;29(2):160-169.
  66. Yamauchi H, Fukuyama H, Shio H. Corpus callosum atrophy in patients with leukoaraiosis may indicate global cognitive impairment. *Stroke*. 2000;31(7):1515-1520.
  67. Yang J, Li C, Liu C, Yin X, Wang J. Resting-state functional MRI in memory deficit of patients with ischemic white matter lesions and mild cognitive impairment. *Chin J Med Imaging Technol*. 2015;32(4):512-516.
  68. Yang M, Zhong W, Song Y, Liang X, Li G. Correlation study of middle cerebral artery pulsatility index and cognitive impairment in lacunar infarction. *Chin J Cerebrovasc Dis*. 2016;13(12):634-635.

69. Yi L, Wang J, Jia L, et al. Structural and Functional Changes in Subcortical Vascular Mild Cognitive Impairment: A Combined Voxel-Based Morphometry and Resting-State fMRI Study. *PLoS One*. 2012;7(9):e44758.
70. Yu D, Hennebelle M, Sahlas DJ, et al. Soluble Epoxide Hydrolase-Derived Linoleic Acid Oxylipins in Serum Are Associated with Periventricular White Matter Hyperintensities and Vascular Cognitive Impairment. *Transl Stroke Res*. 2019;10(5):522-533.
71. DeCarli C, Murphy DGM, Tranh M, et al. The effect of white matter hyperintensity volume on brain structure, cognitive performance, and cerebral metabolism of glucose in 51 healthy adults. *Neurology*. 1995;45(11):2077-2084.
72. Yuan J-L, Wang S-K, Peng P, et al. Characteristics of cognitive impairment in patients with leukoaraiosis. *Natl Med J China*. 2012;92(3):147-151.
73. Yuan J-L, Wang S-K, Guo X-J, et al. Disconnections of cortico-subcortical pathways related to cognitive impairment in patients with leukoaraiosis: A preliminary diffusion tensor imaging study. *Eur Neurol*. 2017;78(1-2):41-47.
74. Yuspeh RL, Vanderploeg RD, Crowell TA, Mullan M. Differences in Executive Functioning Between Alzheimer's Disease and Subcortical Ischemic Vascular Dementia. *J Clin Exp Neuropsychol*. 2002;24(6):745-754.
75. Zhang CE, Wong SM, Uiterwijk R, et al. Blood-brain barrier leakage in relation to white matter hyperintensity volume and cognition in small vessel disease and normal aging. *Brain Imaging Behav*. 2019a;13(2):389-395.
76. Zhang L, Sun WH, Xing M, et al. Medial Temporal Lobe Atrophy is Related to Learning Strategy Changes in Amnesic Mild Cognitive Impairment. *J Int Neuropsychol Soc*. 2019b;25(7):706-717.
77. Zhao X-L, Liu Y, Deng Q, Li L. Clinical study on the value of combining neuropsychological tests with auditory event-related potential P300 for cognitive assessment in elderly patients with cerebral small vessel disease. *Chin J Contemp Neurol Neurosurg*. 2016;16(11):768-773.
78. Zhou A, Jia J. Different cognitive profiles between mild cognitive impairment due to cerebral small vessel disease and mild cognitive impairment of Alzheimer's disease origin. *J Int Neuropsychol Soc*. 2009;15(6):898-905.
79. Zhou X, Wang L, Liu H, Sun Z. Relationship between serum bilirubin, uric acid and cognition impairment in patients with subcortical ischemic vascular disease. *Chin J Neurol*. 2014;47(5):305-310.
80. Zi W, Duan D, Zheng J. Cognitive impairments associated with periventricular white matter hyperintensities are mediated by cortical atrophy. *Acta Neurol Scand*. 2014;130(3):178-187.
81. Deguchi K, Kono S, Deguchi S, et al. A novel useful tool of computerized touch panel-type screening test for evaluating cognitive function of chronic ischemic stroke patients. *J Stroke Cerebrovasc Dis*. 2013;22(7):e197-e206.
82. Fang M, Feng C, Xu Y, Hua T, Jin AP, Liu XY. Microbleeds and silent brain infarctions are differently associated with cognitive dysfunction in patients with advanced periventricular leukoaraiosis. *Int J Med Sci*. 2013;10(10):1307-1313.
83. Fernández PJ, Campoy G, García Santos JM, et al. Is there a specific pattern of attention deficit in mild cognitive impairment with subcortical vascular features? Evidence from the attention network test. *Dement Geriatr Cogn Disord*. 2011;31(4):268-275.
84. Shi Y, Wardlaw JM. Update on cerebral small vessel disease: a dynamic whole-brain disease. *Bmj*. 2016;1(3):83-92.
85. ter Telgte A, van Leijssen EMC, Wiegertjes K, Klijn CJM, Tuladhar AM, De Leeuw

- FE. Cerebral small vessel disease: From a focal to a global perspective. *Nat Rev Neurol*. 2018;14(7):387-398.
86. Vasquez BP, Zakzanis KK. The neuropsychological profile of vascular cognitive impairment not demented: A meta-analysis. *J Neuropsychol*. 2015;9(1):109-136.
87. Ritchie SJ, Bates TC, Der G, Starr JM, Deary IJ. Education is associated with higher later life IQ scores, but not with faster cognitive processing speed. *Psychol Aging*. 2013;28(2):515-521.
88. Backhouse EV, McHutchison CA, Cvorov V, Shenkin SD, Wardlaw JM. Early life risk factors for cerebrovascular disease: A systematic review and meta-analysis. *Neurology*. 2017;88(10):976-984.
89. Dykiert D, Deary IJ. Retrospective validation of WTAR and NART scores as estimators of prior cognitive ability using the lothian birth cohort 1936. *Psychol Assess*. 2013;25(4):1361-1366.
90. Yoon CW, Shin JS, Kim HJ, et al. Cognitive deficits of pure subcortical vascular dementia vs Alzheimer disease: PiB-PET-based study. *Neurology*. 2013;80(6):569-573.
91. Wei N, Deng Y, Yao L, et al. A neuroimaging marker based on diffusion tensor imaging and cognitive impairment due to cerebral white matter lesions. *Front Neurol*. 2019;10(FEB):1-7.
92. Wang F, Zou ZR, Yuan D, et al. Correlation between serum S100 $\beta$  protein levels and cognitive dysfunction in patients with cerebral small vessel disease: A case-control study. *Biosci Rep*. 2017;37(2):1-10.

**Figure 1: Study selection flow diagram**





**Table 1:** Characteristics of all included studies

Study	SVD cohort described as	SVD n	Control n	SVD age mean (SD)	SVD % female	SVD years of Education mean (SD)	SVD % Hypertension	SVD % Diabetes	SVD % Ever smoking	Variables on which SVD & Controls are matched (blank cells=no matching, or data unavailable)	SVD Mean WMH/TIV (SD) Mean Visual rating (SD)
Anderson, 2008	Lacunar syndrome	30	30	68.3 (16.8)	47%	9.7 (2.12)				1, 2	
Atwi, 2018	Fazekas $\geq 2$	18	28	72 (5)	56%		22%	6%		1, 2, 3	9.2 ml (0.6)
Bella, 2016	VCI-ND	25	20	67.5 (6.7)	60%	7.6 (3.9)	88%		28%	1, 3	
Boone, 1992	1) WMH $\leq 1\text{cm}^2$	27	46	63.6 (9.9)		15.0 (1.9)				3	
	2) WMH $>1\text{cm}^2 - 10\text{cm}^2$	21	†	69.2 (6.8)		14.2 (3.1)				3	
	3) Total WMH $>10\text{cm}^2$	6	†	72.0 (4.9)		12.8 (1.3)				3	
Brookes, 2014	SVD	45	80	69.7 (8.2)	44%	Highest formal qualification: None: 51% Secondary: 11% Further education: 27% Degree: 9% Higher degree: 0% Unavailable: 2%	84%	21%	69%	1, 2	Modified Fazekas n (%): Fazekas 0: 6 (13%) Fazekas 1: 12 (27%) Fazekas 2: 12 (27%) Fazekas 3: 12 (27%) Unavailable: 3 (6%)
Brookes, 2015	SVD	196	303	63.5 (9.9)	32%	13.7 (3.8)	75%	23%	44%	1, 2, 4	
DeCarli, 1995	WMH volume $> 0.5\%$ TIV	5	17	74 (14)			0%			1	WMH/TIV 0.80 (0.24)
Deguchi, 2013	Lacunar infarction	76	105	73.4 (8.9)	34%	12.5 (2.3)	68%	30%	13%*	1, 2	
Fang, 2013	1) silent brain infarct	46	91	70.9 (6.4)	57%	8.11 (2.3)	83%	22%	20%	1, 2, 5	
	2) Microbleeds	41	†	70.6 (5.2)	42%	8.24 (1.9)	81%	27%	22%	1, 2, 5	
	3) silent brain infarct + microbleeds	49	†	72.1 (5.0)	47%	8.20 (2.3)	82%	25%	25%	1, 2, 5	
Fernández, 2011	MCI with subcortical vascular damage	19	19	72.2 (7.6)	32%	3.6 (3.5)					
Gainotti, 2008	MCI + multiple subcortical infarcts	41	65	71.7 (5.9)	41%	Reporting unclear				1, 3	

<b>Garrett, 2004</b>	VCI-ND	18	25	78.4 (6.4)	44%	13.6 (2.5)					
<b>Gonçalves 2017</b>	Subcortical vascular dementia	16	40	74.94 (5.4)	38%	3.2 (1.8)				1,2	
<b>Graham, 2004</b>	VaD	19	19	71.2 (7.8)	26%	11.6 (3.1)				1, 3	
<b>Hassan, 2010</b>	Symptomatic lacunar infarction	30	12	59.1(9.5)	40%	Able to read and write: 53% Educated to between primary and university level: 46.7%	100%	47%	53%	1	
<b>Hsu, 2016</b>	MCI due to SIVD	20	30	68.5 (10.8)	30%	7.6 (4.17)	40%	25%		1,2,3	23.9 (9.9) Scheltens
<b>Ishii, 2007</b>	1) CDR 0, non-strategic CVD 2) CDR 0, strategic CVD 3) CDR 0.5, non-strategic CVD 4) CDR 0.5, strategic CVD	68 38 21 21	234 † † †	74.9 (7.9) 73.0 (6.3) 79.1 (6.9) 80.7 (6.5)		8.3 (1.5) 8.4 (2.1) 7.3 (2.2) 7.6 (1.7)	84% 92% 76% 86%	10% 16% 14% 5%			
<b>Jokinen, 2009</b>	SIVD	89	524	73.6 (4.9)	48%	8.8 (4.2)	80%	18%	15%*	1, 2	WMH severity ratings: Mild: 0 Moderate: 10 Severe: 79
<b>Kim, 2018</b>	Subcortical VCI	61	19	78.7 (6.3)	72%	7.3 (5.1)				1,2,3	
<b>Kramer, 2002</b>	SIVD	12	27	73.7 (6.2)		15.3 (2.6)				1, 3	
<b>Kuriyama, 2018</b>	1) dWMH Fazekas grade 1 2) dWMH Fazekas grade 2 3) dWMH Fazekas grade 3	134 62 16	68 † †	69.3 (5.7) 71.5 (6.3) 73.8 (6.6)	31% 36% 38%	Reporting unclear	47% 57% 81%	12% 15% 6%	16%* 7%* 13%*	2	PWMH ≥ grade 2 (de Groot classification), n (%): 4 (3%) 17 (27%) 11 (69%)
<b>Ledesma-Amaya, 2014</b>	Lacunar infarction	16	16	63 (9.4)	38%	7.1 (4)	13%	8%		1,3	
<b>Lee, 2014</b>	Subcortical vascular mild cognitive impairment	67	75	73.7 (6.7)	61%	9.0 (5.2)	75%	25%		2	34.9ml (17.8)
<b>Lewine, 1993</b>	1) Men with WMH	4	4	35.2 (11.8)	0%					1	

	2) Women with WMH	6	6	43.3 (8.4)	100%					1	
<b>Li, 2001</b>	Leukoaraiosis	29	25	64.9 (6.8)		7.5 (6.8)				1, 2, 3	
<b>Li, 2012</b>	Lacunar stroke with ischaemic leukoaraiosis	20	20	65.8 (8.4)	45%	Reporting unclear	60%		60%		
<b>Li, 2015</b>	Symptomatic lacunar infarction	19	23	66 (12.0)	37%	8.5 (3)	68%	37%	11%*	3	
<b>Li, 2017</b>	Leukoaraiosis	13	13	63 (6)	39%	10.3 (3.3)	69%			1, 2, 6	
<b>Liu, 2008</b>	Subcortical small vessel infarction	60	52	73 (8)	47%		27%	14%		1, 2, 3	
<b>Liu, 2015</b>	WMH	30	30	78.2 (5.7)		8.4 (2)	23%	11%		1, 3	
<b>Liu 2019a</b>	1) Pre-subcortical vascular cognitive impairment vascular disease (pre-SVCI) 2) Subcortical vascular cognitive impairment (SVCI)	25 29	27 †	70.5 (3.5) 70.5 (5.8)	36% 45%	10.6 (2.6) 9.4 (1.7)	56% 59%	40% 37%	20% 24%	1, 2, 3 1, 2, 3	12.6ml (5.0) 19.8ml (8.8)
<b>Liu 2019b</b>	1) SVD without cognitive impairment 2) SVD with cognitive impairment	21 20	25 †	64.6 (10.9) 66.5 (7.9)	52% 50%	10.5 (3.6) 13.1 (3.8)				1, 2, 3 1, 2, 3	3.2ml (3.0) 3.4ml (4.1)
<b>Maeshima, 2002</b>	1) Silent brain infarct 2) pWMH	21 14	63 70	49.4 (5.6) 51.4 (6.6)	62% 57%	12.5 (2.1) 12.4 (2.1)	24% 21%	14% 29%		1, 2, 3 1, 2, 3	
<b>Nebes, 2013</b>	WMH	26	40	75.1 (5.8)	65%	14.5 (2.7)				1, 2, 3	
<b>Nordahl 2005</b>	MCI + severe WMH	11	20	77.6 (3.6)	55%	13.5 (1.5)	82%	27%		1, 3	WMH/TIV 3.9 (1.3)
<b>Nordlund, 2007</b>	Vascular MCI	60	60	67.0 (7.3)	63%	11.2 (3.2)				1, 2, 3	
<b>Oguro, 2000</b>	PWMH	18	9	73.6 (4.2)	61%	9.3 (3.2)			Scale unclear	1, 2, 3	
<b>Pascual, 2010</b>	1) Vascular white matter disease without dementia 2) Vascular white matter disease with dementia	12 12	12 (cognitive data for 10 only) †	80.7 (5.2) 79.5 (4.6)	50% 50%					1, 2, 3 1, 2, 3	
<b>Pinkhardt, 2014</b>	Small vessel cerebrovascular disease	25	19	75 (58-91)	68%						Fazekas pWMH 2.36;

											<i>Fazekas dWMH 2:2 SD not reported</i>
<b>Price, 2009</b>	Dementia with: 1) mild leukoaraiosis 2) moderate leukoaraiosis 3) severe leukoaraiosis	73 44 27	24 † †	78·5 (5·7) 81·0 (5·0) 79·4 (4·4)	82% 66% 81%	12·6 (2·8) 12·2 (2·8) 11·9 (2·1)				2, 3	<i>Junque score 4·0 (2·8) 12·0 (2·3) 22·3 (4·4)</i>
<b>Quinque, 2012</b>	Early cerebral microangiopathy	11	21	61·4 (6·3)	40%	13·8 (3·0)				1, 2, 3, 4	<i>8·3 (4·0) ARWMC</i>
<b>Rao, 1989</b>	Leukoaraiosis	10	40	47·1 (7·8)	90%	14 (1·9)				1, 2, 3	
<b>Schmidt, 1993</b>	WMH	74	76	61·3 (6·6)		11·4 (2·6)	4%			3	
<b>Seo, 2010</b>	1) Subcortical vascular MCI 2) Subcortical VaD	34 (cognitive data for between 30-34 only)  20 (cognitive data for between 15-18 only)	96 (cognitive data for 63 only)  †	70·6 (6·4) 74·2 (6·1)	44% 55%	10·1 (4·8) 7·2 (5·5)	84% 100%	29% 30%		2, 3	
<b>Sierra, 2004</b>	Hypertensive with WMH	23	37	55·2 (4·2)	39%	11·2 (3·7)	100%		22%	1, 2, 3	
<b>Squarzoni, 2017</b>	Silent brain infarct	57	187	72·1 (3·4)	56%		68%	33%		1	
<b>Sudo, 2013</b>	Vascular MCI	15	11	74·1 (8·1)	60%	8·9 (4·0)				1, 2, 3	<i>Fazekas rating, n (%)  Fazekas 0: 0 (0%) Fazekas 1: 0 (0%) Fazekas 2: 7(47%) Fazekas 3: 8 (53%)</i>
<b>Sun, 2014</b>	Mild WMH	51	49	65·3 (7·2)	55%	10·3 (3·4)	16%	10%	8%	1, 2, 3	
<b>Tupler, 1992</b>	dWMH	48	18	69·9 (10·1)	69%	13·9 (4·2)					

<b>van Swieten, 1991</b>	Hypertensive with confluent WMH	10	18	67·8 (5·3)	32%		100%	50%		1, 2	<i>Normal white matter=20; focal lesions=12; confluent lesions=10</i>
<b>van Zandvoort, 2003</b>	Lacunar infarct in brainstem	17	17	60·1 (11·6)	29%	<6 years primary school: 0% 6 years of education (YoE): 6% 8 YoE: 0% 9 YoE: 47% 10-11 YoE: 23·5% 12-18 YoE: 23·5% >18 YoE: 0%				1, 2, 3	
<b>van Zandvoort, 2005</b>	Supratentorial lacunar infarct	26	14	60·5 (12·3)	38%	Scale unclear				1, 3	
<b>Villeneuve, 2011</b>	MCI with confluent WMH	21	27	73·4 (5·1)	48%	12·4 (5·2)				1, 2, 3	<i>10·0 (3·1) Wahlund</i>
<b>Wolfe, 1990</b>	Multiple lacunar infarcts	11	11	64·6 (6·0)	No information	10·1 (3·1)				1, 3	
<b>Wong, 2007</b>	Stroke associated with SVD	32	42	72·8 (10·0)	44%	Scale unclear				1, 2, 3	56·9 ml (8·7)
<b>Yamauchi, 2000</b>	Lacunar infarct	28	34	69·3 (6·3)	32%	8·9 (1·3)	21%	11%		1, 3	<i>Anterior WMH 3·6 (3·1) Posterior 3·6 (2·8) Scale – see publication</i>
<b>Yang, 2015</b>	Vascular MCI	15	15	61·7 (6·2)	73%	9·3 (2·4)				1, 2, 3	
<b>Yang, 2016</b>	Lacunar infarct	60	30	67·0 (7·0)	42%	7·2 (2·3)	58%	18%	38%*	1, 2, 3	
<b>Yi, 2012</b>	Subcortical vascular MCI	26	28	66·7 (9·5)	58%	9·9 (4·4)				1, 2, 3	
<b>Yu, 2019</b>	Extensive SIVD	29	25	71·8 (11·0)	52%	14·4 (3·2)	75%	10%	58%	1, 2, 3	DWMH 2·55 (2·5)cm <sup>3</sup> PWMH 29·0 (21·6)cm <sup>3</sup>
<b>Yuan, 2012</b>	Leukoaraiosis	46	38	72·0 (6·0)	70%	8 (4)	74%	61%		1, 2, 3	
<b>Yuan, 2017</b>	Leukoaraiosis	50	50	71·7 (5·5)	58%	7·5 (4·3)	67%	50%	26%	1, 2, 3	
<b>Yuspeh,</b>	SVaD	29	38	74·1 (8·2)	35%	13·2 (4·4)				1, 2, 3	

<b>2002</b>											
<b>Zhang, 2019a</b>	SVD	77	39	70 (11)	40%	Educational level: Low = 45% Medium = 35% High = 20%	64%	16%	25%	1, 2	WMH/TIV 0-014 (0-002)
<b>Zhang, 2019b</b>	Amnesic MCI with Fazekas >1	30	90	68.33 (5.3)	47%	12.30 (2.6)				1, 2	
<b>Zhao, 2016</b>	1) Lacunar infarct 2) WMH 3) Lacunar infarct + WMH	62 60 61	55 † †	73.2 (4.7) 71.9 (4.2) 73.9 (3.8)	42% 38% 33%	10.7 (3.2) 10.9 (3.6) 10.5 (3.2)	76% 75% 78%	37% 33% 43%	31%* 23%* 34%*		
<b>Zhou, 2009</b>	MCI due to SVD	56	80	67.3 (6.2)	36%	9.6 (3.1)				2, 3	
<b>Zhou, 2014</b>	1) Subcortical vascular MCI 2) Subcortical vascular disease	79 82	77 †	72.2 (7.1) 74.1 (7.1)	53% 51%	9.9 (3.3) 7.4 (3.3)	63% 73%	29% 22%	32%* 42%*	2	
<b>Zi, 2014</b>	pWMH	16	16	62.0 (4.9)	56%	8 (6.3-10.3)	63%	19%	19%*	1, 2, 3	

Data are presented as mean (SD) or median (range), unless otherwise stated; CVD: cerebrovascular disease; dWMH: deep white matter hyperintensities; MCI: mild cognitive impairment; pWMH: Periventricular white matter hyperintensities; SIVD: subcortical ischaemic vascular disease; SVaD: subcortical ischaemic vascular dementia; SVD: cerebral small vessel disease; TIV: total intracranial volume; VaD: vascular dementia; VCI: vascular cognitive impairment; VCI-ND: vascular cognitive impairment – no dementia; WMH: white matter hyperintensities. Controls matched for: 1 Age; 2 Sex; 3 Education; 4 Premorbid IQ; 5 Vascular risk factors; 6 history of hypertension. Where cells are blank, no data were available.

\* Current smoker

† Same control group used as comparison for both/all SVD groups.

**Table 2:** Demographics of SVD and control cohorts from all included studies

	SVD cohorts		Control cohorts	
	cohorts (n=89)	mean (SD or 95% CI)	cohorts (n=71)	mean (SD or 95% CI)
mean age*	88	69.3 (67.8, 70.9)	70	66.4 (64.6, 68.2)
% female	76	49.0 (15.9)	63	50.9 (15.0)
mean years education*	67	10.3 (9.7, 10.9)	53	10.8 (10.1, 11.6)
% hypertension	48	66.7 (23.0)	34	37.8 (20.7)
% diabetes	45	25.5 (13.7)	31	17.1 (13.5)
% hypercholesterolemia	5	55.1 (20.0)	4	35.1 (12.3)
% history of smoking	28	28.3 (16.1)	16	25.6 (16.9)

\* Mean age and mean years of education were calculated using random effects meta-analysis in the meta package<sup>1</sup> in R version 3.6.1. Only studies that presented group level data for age and years of education as mean and standard deviation were included in these meta-analyses.

1. Schwarzer G. “meta: An R package for meta-analysis.” R News 2007, 7(3), 40–45.

**Table 3:** Results of meta-analysis models for each cognitive domain

	Studies	Outcomes	Estimate (SE)	95% CI	Degrees of freedom	Uncorrected p value	Heterogeneity	
							$\tau^2$	I <sup>2</sup>
Processing Speed	37	88	-0.885 (0.14)	-1.17, -0.60	35.8	2.3x10 <sup>-7</sup>	0.6	91.4
Executive function	58	188	-0.928 (0.08)	-1.08, -0.78	56.2	<2x10 <sup>-16</sup>	0.4	87.9
Delayed memory	41	98	-0.898 (0.10)	-1.10, -0.69	39.6	7.2x10 <sup>-11</sup>	0.5	88.0
Attention	12	19	-0.622 (0.14)	-0.94, -0.31	10.6	0.001	0.2	80.8
Reasoning	16	25	-0.634 (0.14)	-0.93, -0.34	14.6	4.2x10 <sup>-4</sup>	0.2	76.5
Visuospatial ability	27	50	-0.720 (0.11)	-0.96, -0.48	25.3	1.3x10 <sup>-6</sup>	0.3	77.6
Language	24	42	-0.808 (0.10)	-1.01, -0.60	22.7	3.2x10 <sup>-8</sup>	0.3	81.2