

Influence of sexual risk behaviour and STI co-infection dynamics on the evolution of HIV set point viral load in MSM.

Diana M Hendrickx^{1,*}, Wim Delva^{1,2,3,4,5,6}, Niel Hens^{1,7},

1 I-BioStat, Data Science Institute, Hasselt University, Hasselt, Belgium

2 The South African Department of Science and Technology-National Research Foundation (DST-NRF) Centre of Excellence in Epidemiological Modelling and Analysis (SACEMA), Stellenbosch University, Stellenbosch, South Africa

3 Department of Global Health, Faculty of Medicine and Health, Stellenbosch University, Stellenbosch, South Africa

4 International Centre for Reproductive Health, Ghent University, Ghent, Belgium

5 Rega Institute for Medical Research, KU Leuven, Leuven, Belgium

6 School for Data Science and Computational Thinking, Stellenbosch University, Stellenbosch, South Africa

7 Centre for Health Economics Research and Modelling Infectious Diseases, Vaccine & Infectious Disease Institute, University of Antwerp, Antwerp, Belgium

* diana.hendrickx@uhasselt.be

Abstract

HIV set-point viral load (SPVL) is an important predictor of HIV progression and transmission. Although it has been reported that anti-retroviral therapy (ART) reduces viral load (VL), increased SPVL levels have been observed in MSM in the decade following the introduction of ART in the Netherlands. Several studies have been devoted to explain these counter-intuitive trends in SPVL. However, to our knowledge, none of these studies has investigated an explanation in which it arises as the result of a sexually transmitted infection (STI) co-factor in detail.

In this study, we adapted an event-based, individual-based model to investigate how STI co-infection and sexual risk behaviour affect the evolution of HIV SPVL in MSM before and after the introduction of ART.

The results suggest that both STI co-factors and sexual risk behaviour have an effect on SPVL. However, the observed trends in SPVL cannot be explained by sexual risk behaviour and STI co-factors only.

We recommend to develop mathematical models including also factors related to viral evolution as reported earlier in the literature. However, this requires more complex models, and the collection of more data for parameter estimation than what is currently available.

Introduction

HIV viral load (HIV RNA concentration in plasma) is an important and widely used prognostic marker for HIV progression and transmission [18, 19, 25]. While immediately after infection rapid HIV replication and high HIV viral load (VL) values are observed, VL declines during the asymptomatic phase and reaches a stable level, called set-point viral load (SPVL) after a few weeks to a few months [9]. Although it has been reported that anti-retroviral therapy (ART) reduces HIV transmission by decreasing VL [20, 23], increased SPVL levels were observed in MSM in the Netherlands during the period 1995-2007, after the introduction of ART in 1994 [14]. Moreover, in Belgium, where ART was also introduced in the mid-1990s [22], an increase in HIV incidence in MSM has been observed during the period 1997-2013. After 2013, a drop in new HIV diagnoses has been observed [27].

Several studies have been devoted to explain these counter-intuitive trends in HIV SPVL after the introduction of ART. The majority of these studies try to explain these trends from an evolutionary perspective. They explain the observed trends by host genetic factors [33,35], viral adaptation of HIV to its host population [3, 6, 10, 28] and evolution of HIV SPVL to maintain higher viral fitness [8, 13, 29, 32]. A few studies have investigated sexual risk behaviour as a potential factor influencing SPVL [1, 12]. A recent study of Goodreau et al. [12] reports a positive relationship between relational concurrency and mean SPVL. Mathematical modeling has been shown to be a valuable tool to investigate the evolution of SPVL and HIV virulence. Bezemer et al. [1] used a deterministic compartmental ODE model to study the influence of sexual risk behaviour on the HIV epidemic. Herbeck et al. [17] used an individual-based model to investigate trends in HIV virulence and community viral load. Their model contained functions for transmission and progression of HIV, SPVL, VL at multiple stages of HIV and SPVL heritability. Sexual relationships were described by a simplified contact network, without including sexual mixing patterns. Roberts et al. [24] designed a deterministic model to assess the impact of ART on viral evolution. Smith et al. [30] developed a compartmental model to study the influence of ART and pre-exposure prophylaxis (PrEP) on the evolution of HIV virulence. Goodreau et al. [12] used an individual- and network-based model to study the relationship between relational concurrency, HIV stages and evolution of HIV SPVL. However, none of these models implemented the effect of a sexually transmitted infection (STI) co-factor whereas the presence of an STI co-factor has been suggested to influence the trend in SPVL [14].

In this study, we adapted an event-based, individual-based model to investigate the effect of sexual risk behaviour, STI co-infection and their combined effect on the evolution of HIV SPVL in MSM after the introduction of ART. The paper is organized as follows. In the Materials and Methods section, we describe the individual-based model, the parameter estimation procedure and the scenarios considered. In the Results section, the results for the different scenarios are presented and compared. In the Discussion section, we discuss our main findings and formulate recommendations for future research.

Materials and Methods

Simpact Cyan 1.0 modeling framework

Simpact Cyan 1.0 is an open-source framework for constructing individual-based models for simulating the transmission, diagnosis and treatment of HIV [21]. The program models each individual in a heterosexual or homosexual population, and the sexual relationships between individuals. The formation and dissolution of relationships, as well as birth, mortality, HIV transmission, diagnosis and treatment are represented by events, which have a certain risk of taking place at a certain moment, represented by their hazard function. Models are implemented in continuous time and updated each time an event happens. Simpact Cyan 1.0 also implements a generic sexually transmitted infection (STI) co-factor effect on HIV. Furthermore, it's also possible to simulate interventions by changing certain parameters during the simulation.

More detailed information on the Simpact Cyan 1.0 modeling framework is available in [21] and from <http://www.simpact.org/>.

Model scenarios

In this study, we focus on the influence of sexual risk behaviour and STI co-infection dynamics on the evolution of the HIV set point viral load (SPVL) in MSM. Simulations are conducted for the period from 1980 to 2015, including both the period before and after the introduction of ART in 1994. After the introduction of ART, it is also assumed that the CD4 count threshold below which ART is offered increased [7], so that more people are treated. Furthermore, we assume that availability of ART has led to intensified HIV testing [11].

Four model scenarios including ART coverage, corresponding to four different hypotheses for explaining the rise in SPVL between 1995 and 2007, are considered:

- no STI co-factor effect and no change in risk behaviour: the observed trends are caused by other factors;

- STI co-factor effect and no change in risk behaviour: the observed trends are caused by an increased STI co-factor effect; 58
59
- a change in risk behaviour and no STI co-factor effect: the observed trends are caused by an increase in sexual risk behaviour; 60
61
- a change in risk behaviour and an STI co-factor effect: the observed trends are caused by a combination of increased sexual risk behaviour and an increased STI co-factor effect. 62
63

Parameters based on prior knowledge used in the model simulations, and intervention events for simulating the increase in ART coverage since 1994, and the increased risk behaviour with ART coverage (if applicable) are described in the Supplementary Material. 64
65
66

Model calibration 67

Table 1 presents the available literature data on the HIV epidemic in MSM in the Netherlands, used for model calibration. 68

Table 1. Available literature data used for model calibration. All data are for the Netherlands. CI: confidence interval; CrI: credible interval.

data	value	reference
mean log ₁₀ SPVL in MSM in 1985	4.46 (95% CI: 4.27 – 4.65)	[14]
mean log ₁₀ SPVL in MSM in 1995	4.21 (95% CI: 4.09 – 4.33)	[14]
mean log ₁₀ SPVL in MSM in 2007	4.88 (95% CI: 4.76 – 5.01)	[14]
HIV prevalence in MSM in 2007	0.051 (95% CrI: 0.032–0.083)	[5]
HIV prevalence in MSM in 2012	0.083 (95% CrI: 0.061–0.113)	[5]
ART coverage in MSM in 2013	62%	[15]

For the nine parameters in Table 2, there were no literature values available. Therefore, these parameters were fitted to the data in Table 1 by applying an active learning approach [34] using the following steps: 69
70
71

1. Select 10,000 parameter sets by applying Latin Hypercube Sampling (LHS) [31] and using the initial parameter ranges from Table 2. 72
73
2. For each of the 10,000 parameter sets, run a simulation with Simpack Cyan 1.0. 74
3. For each simulation, calculate the goodness-of-fit (GOF) based on the sum of squared relative errors [2]. 75
4. Apply the selection procedure of Castro Sanchez et al [26] based on the GOF measure to narrow the solution space (intervals for the parameters). 76
77
5. Repeat steps 1-4 using the new intervals for the parameters until the GOF does not improve anymore. 78

Table 2. Parameters fitted to the data in Table 1. Initial ranges are based on the examples in the RSimfactHelper package <https://github.com/wdelva/RSimfactHelp>.

Parameter definition	Parameter name	Initial range
formation hazard - baseline value	formationmsm.hazard.simple.alpha_0	[2, 8]
formation hazard - weight for the number of relationships the men in the relationship have; -Inf: everyone is monogamous; 0: formation of a relationship not influenced by the number of partners one already has	formationmsm.hazard.simple.alpha_12	[-10, 0] for scenarios without increased risk behaviour; [-10, -1] for scenarios with increased risk behaviour
formation hazard - influence of the difference in number of partners; in case of no assortativity this parameter is 0; e.g. if this parameter is $\log(0.5)$, then the formation hazard decreases with 50% if the number of current partners of the two men differs 1.	formationmsm.hazard.simple.alpha_3	[-1, 0]
formation hazard - weight for the average age of the partners; negative: for older persons, less relationships are formed	formationmsm.hazard.simple.alpha_4	[-1, 0]
formation hazard - relative importance of the age gap between the partners; 0: no influence; very negative: people are only interested in relationships with people who have the preferred age gap	formationmsm.hazard.simple.alpha_5	[-2, 0]
dissolution hazard - baseline value	dissolutionmsm.alpha_0	[-1.6, 0.1]
HIV transmission hazard - parameter a in the formula $hazard = \exp(a + bV^{-c})$ where V is the current viral load [16]	hivtransmission.param.a	[-1.5, -1]
HIV transmission hazard - parameter b in the formula $hazard = \exp(a + bV^{-c})$ where V is the current viral load [16]	hivtransmission.param.b	[-90, -10]
HIV transmission hazard - parameter c in the formula $hazard = \exp(a + bV^{-c})$ where V is the current viral load [16]	hivtransmission.param.c	[0.1, 0.5]

Results

79

Model calibration

80

Table 3 shows the fitted parameters for the four model scenarios.

81

Table 3. Fitted parameters for the four model scenarios. nSTI-nBC: no STI co-factor, no behavioural change; STI-nBC: STI co-factor, no behavioural change; nSTI-BC: no STI co-factor, behavioural change; STI-BC: STI co-factor, behavioural change.

parameter	nSTI-nBC	STI-nBC	nSTI-BC	STI-BC
formationmsm.hazard.simple.alpha_0	4.65	7.60	4.07	6.50
formationmsm.hazard.simple.alpha_12	-0.181	-8.30	-2.04	-3.61
formationmsm.hazard.simple.alpha_3	-0.149	-0.688	-0.782	-0.670
formationmsm.hazard.simple.alpha_4	-0.00386	-0.0194	-0.0193	-0.00847
formationmsm.hazard.simple.alpha_5	-0.298	-0.0186	-0.0130	-0.00785
dissolutionmsm.alpha_0	-0.0586	-0.436	-0.253	0.0304
hivtransmission.param.a	-1.17	-1.21	-1.09	-1.13
hivtransmission.param.b	-63.1	-23.7	-28.5	-28.8
hivtransmission.param.c	0.352	0.399	0.476	0.334

Goodness-of-fit

82

Figure 1 (left) shows that including an STI co-factor effect or/and a behavioural change results in a considerably better goodness-of-fit (GOF). The model including only an STI co-factor shows the best GOF, followed by the model including both an STI co-factor and behavioural changes (see Figure 1 (right)). For the remainder of the paper, we only discuss the models including an STI co-factor and/or behavioural changes.

83

84

85

86

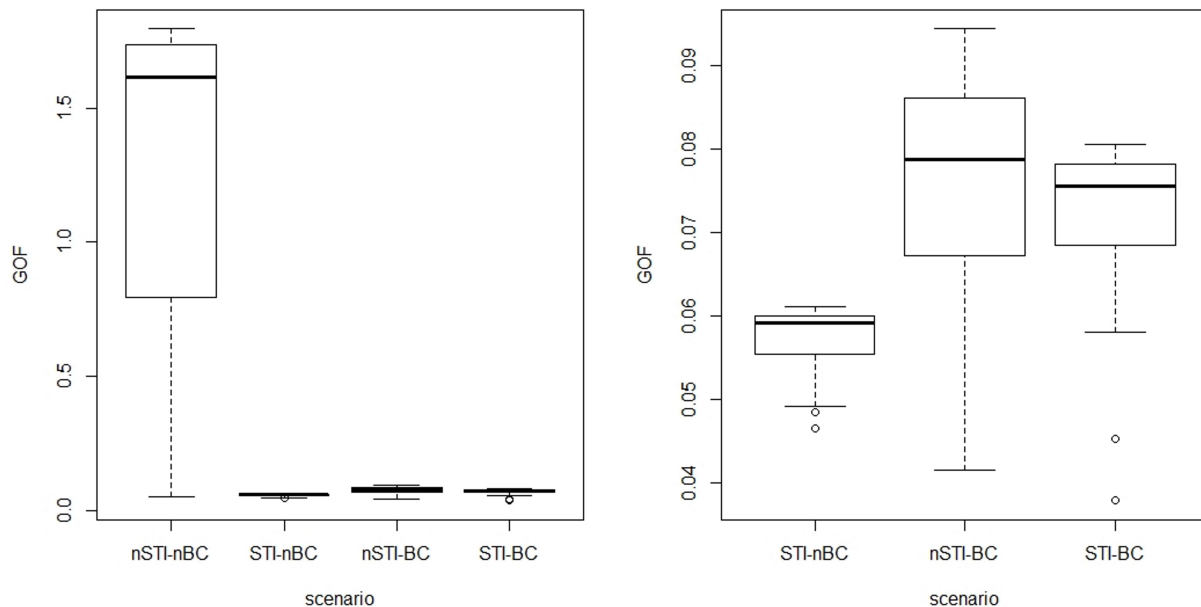


Figure 1. Boxplots for top 30 solutions based on goodness-of-fit. Left: boxplots for the four model scenarios; right: boxplots for the three model scenarios including an STI co-factor or/and behavioural changes.

Trends in HIV prevalence, ART coverage, viral load and HIV incidence

Figure 2 shows the median HIV prevalence and the 100% percentile for 30 simulations with the scenarios STI-nBC, nSTI-BC and STI-BC. When comparing the results with the HIV prevalence data from [5] (see Figure 2 lower right panel), we observe that only for the STI-BC scenario, the 100% percentile falls within the lower and upper bound of the 95% credible interval.

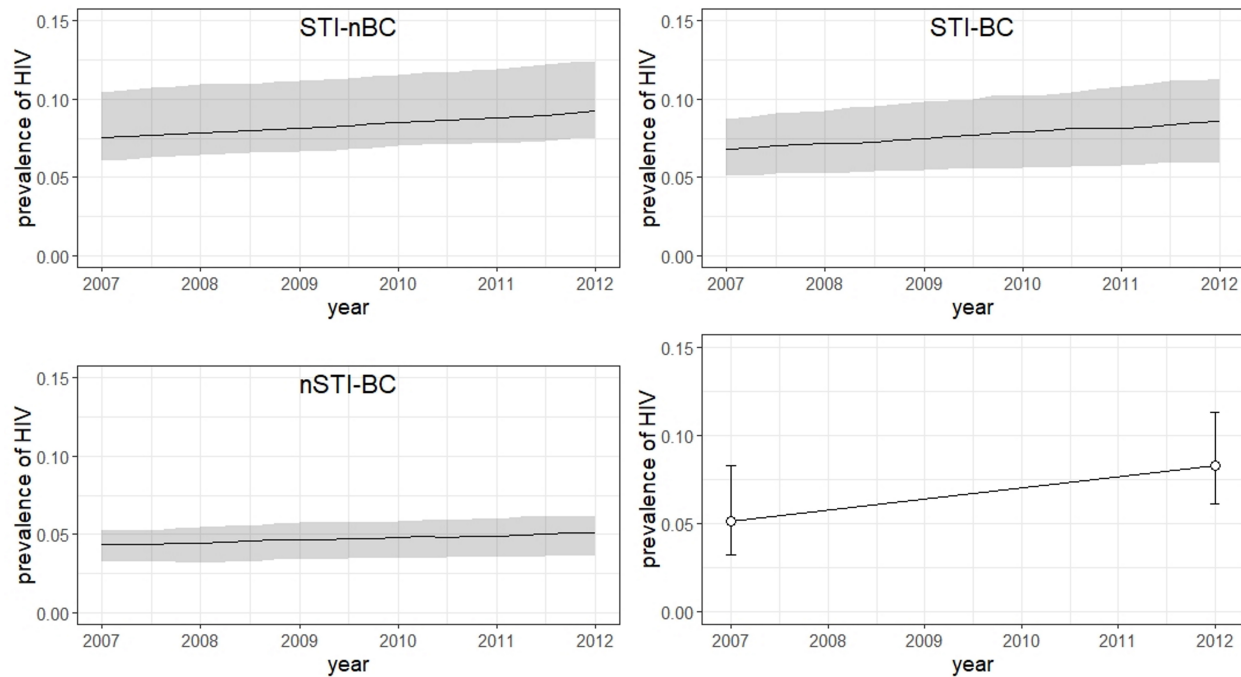


Figure 2. Median HIV prevalence of 30 simulations with the fitted parameters (solid line) and 100% percentile (shaded area) for the period 2007-2012: upper panel, left: STI co-factor, no behavioural change; lower panel, left: no STI co-factor, behavioural change; upper panel, right: STI co-factor and behavioural change. Lower panel, right: mean HIV prevalence with 95% credible interval for 2007 and 2012 from [5].

Figure 3 presents the median ART coverage and the 100% percentile for 30 simulations with the scenarios STI-nBC, nSTI-BC and STI-BC. We observe that the scenario nSTI-BC has the closest approximation of the value of 62% ART coverage in 2013 [15].

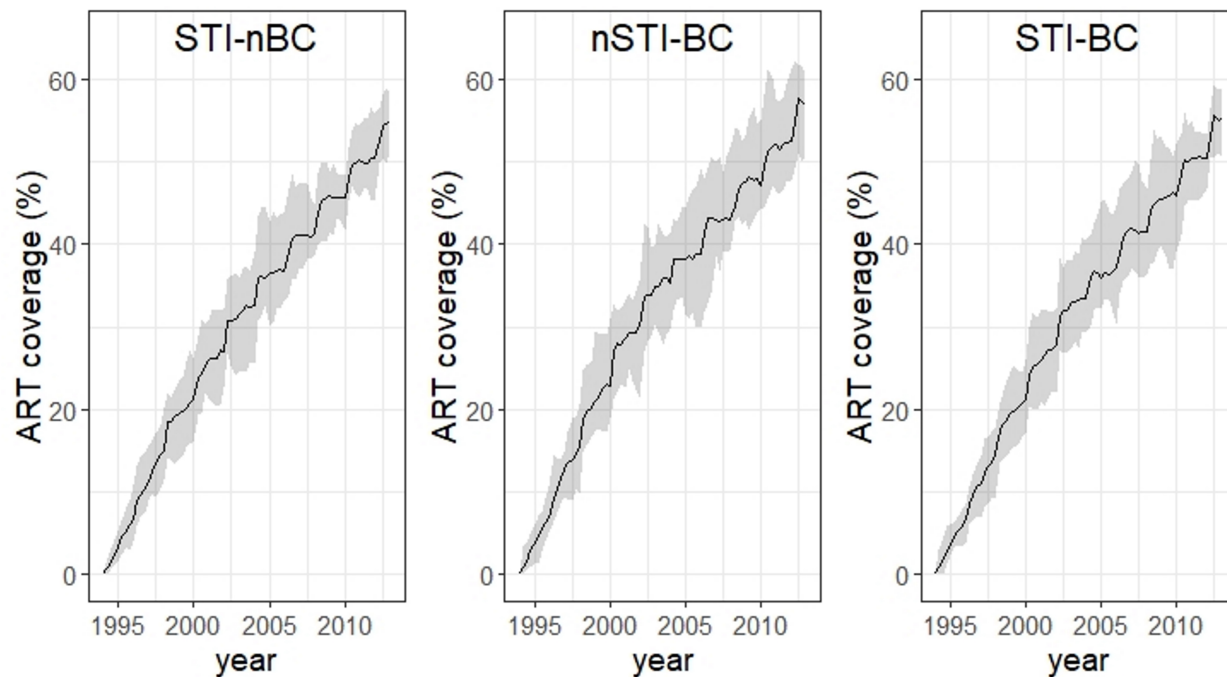


Figure 3. Median ART coverage of 30 simulations with the fitted parameters (solid line) and 100% percentile (shaded area) for the period 1994-2013: left panel: STI co-factor, no behavioural change; middle panel: no STI co-factor, behavioural change; right panel: STI co-factor, behavioural change.

Figure 4 shows that none of the scenarios including an STI and/or increased risk behaviour explains the increasing trend in HIV SPVL between 1995 and 2007 described by Gras et al [14]. However, for the scenario including both an STI co-factor and increased risk behaviour (STI-BC), only a slight decrease in SPVL between 1995 and 2007 is observed, while the other two scenarios show a larger decline. This suggests that both STI co-factor effects and behavioural changes contribute to the reduction of the beneficial effects of ART on the spread of HIV.

95
96
97
98
99
100

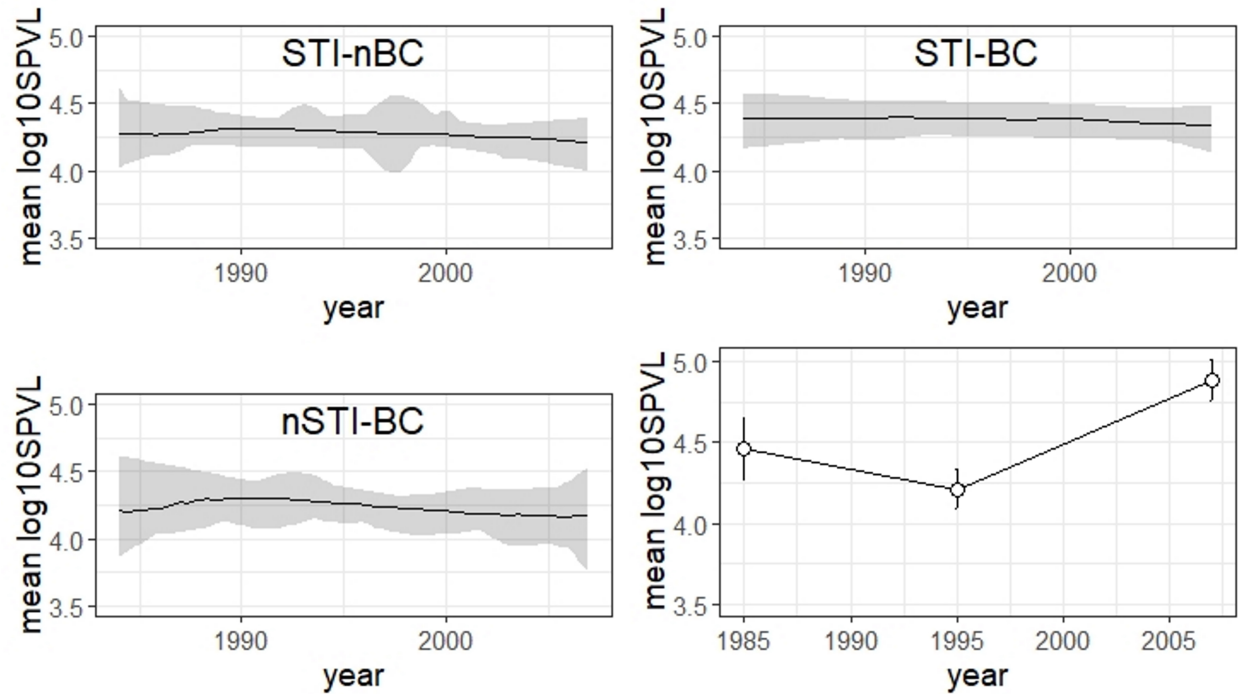


Figure 4. Mean log₁₀ HIV SPVL (mean set-point HIV RNA concentration at 9-27 months after seroconversion) - median of 30 simulations with the fitted parameters (solid line) and 100% percentile (shaded area) for the period 1984-2007: upper panel, left: STI co-factor, no behavioural change; lower panel, left: no STI co-factor, behavioural change; upper panel, right: STI co-factor and behavioural change. See Supplementary Material for more detail on how the figures were generated. Lower panel, right: mean log₁₀ SPVL with 95% confidence interval for 1985, 1995 and 2007 from [14].

Figure 5 shows the median HIV incidence (as fraction of the total population) and the 100% percentile for 30 simulations with the scenarios STI-nBC, nSTI-BC and STI-BC. Only the scenario STI-nBC shows an increase in HIV incidence from 1997 until 2012-2013, followed by a decrease in 2014 and a slight increase in 2015, corresponding with the trend in Belgium [27].

101
102
103
104

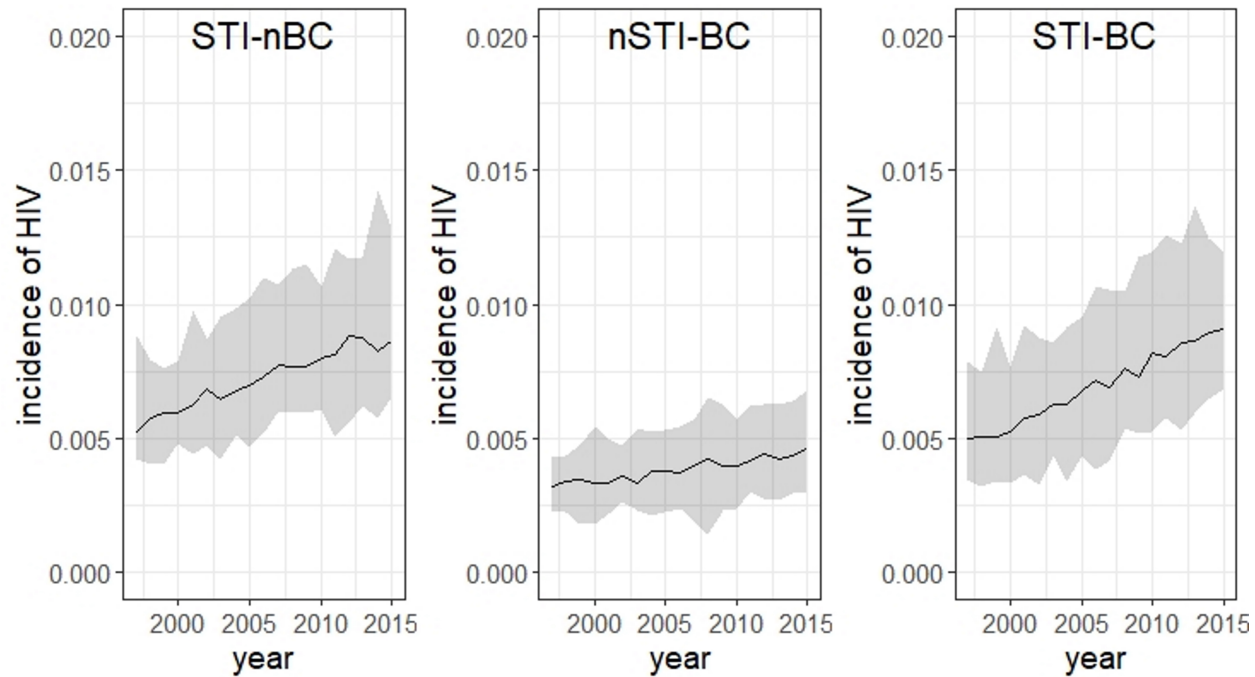


Figure 5. Median HIV incidence (as fraction of the total population) of 30 simulations with the fitted parameters (solid line) and 100% percentile (shaded area) for the period 1997-2015: left: STI co-factor, no behavioural change; middle: no STI co-factor, behavioural change; right: STI co-factor and behavioural change.

Relationship between HIV viral load and point prevalence of concurrency

105

Figure 6 shows the mean log₁₀ HIV SPVL of all individuals with a date of HIV seroconversion between 1984 and 2007 against mean point prevalence of concurrency over the period 1984-2007 for 30 simulations with the STI-nBC, nSTI-BC and STI-BC scenarios. Only the scenarios STI-nBC and nSTI-BC confirm the increasing trend of SPVL with relational concurrency described by Goodreau et al [12].

106

107

108

109

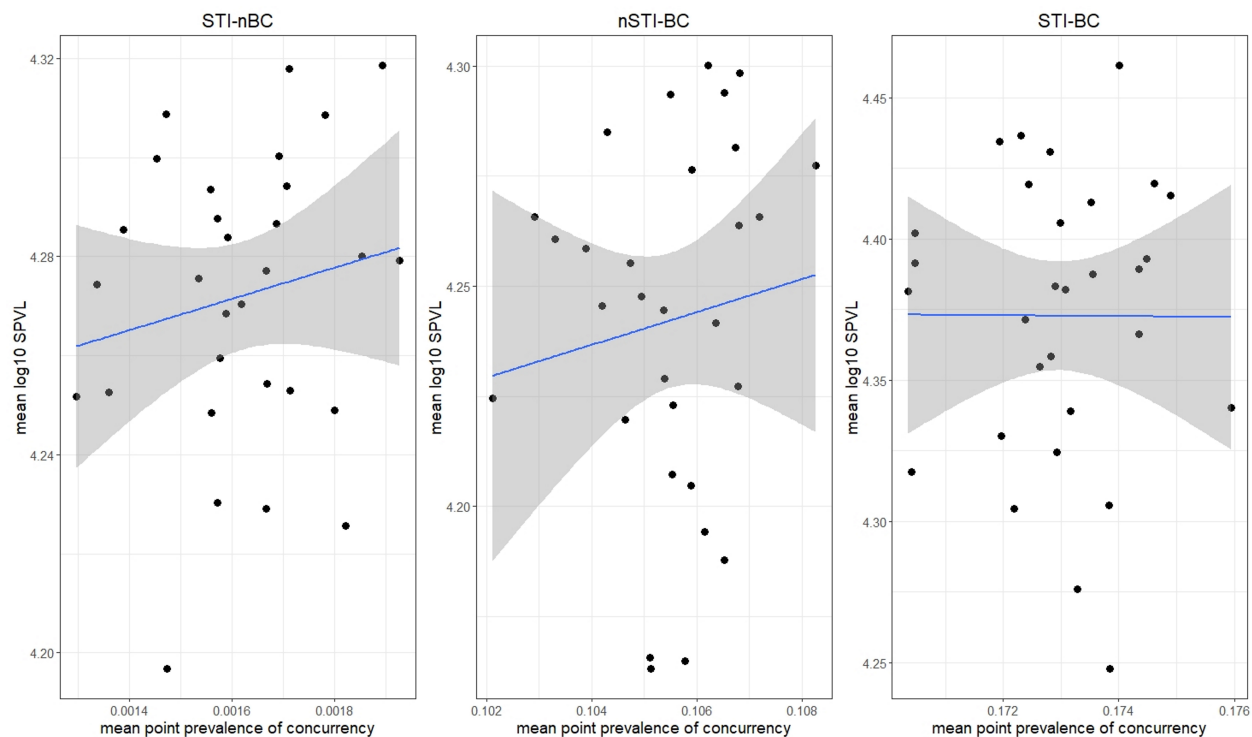


Figure 6. Mean log₁₀ HIV SPVL of all individuals with a date of HIV seroconversion between 1984 and 2007 against mean point prevalence of concurrency over the period 1984-2007 for 30 simulations with the fitted parameters (black dots) and the trendline (blue line) with 95% confidence intervals (shaded area). Left: STI co-factor, no behavioural change; middle: no STI co-factor, behavioural change; right: STI co-factor and behavioural change.

Discussion

After the introduction of ART, increasing trends in HIV SPVL and HIV incidence were observed in MSM [14, 27], which are counter-intuitive and not fully understood. In this study, we used an event- and individual-based model to investigate the impact of STI co-infection, changes in sexual risk behaviour and a combination of both on the evolution of HIV SPVL in MSM. The results show a considerable improved fit of the model to literature data when including an STI co-factor and/or behavioural changes, which suggests that both sexual risk behaviour and STI co-factor effects influence HIV SPVL. Furthermore, the model including only an STI co-factor and no behavioural change provides the best fit. However, the HIV prevalence curves are closer to the observed values in [5] when also including behavioural changes. For the ART coverage, the scenario including only behavioural changes and no STI co-factor results in the closest approximation to the reported value in [15].

Although none of the three scenarios including an STI co-factor and/or behavioural changes could explain the increasing trend in SPVL reported in Gras et al. [14], all scenarios can explain the increase in new HIV cases between 1995 and 2013. Moreover, only the scenario with an STI co-factor and no behavioural changes could also explain the drop HIV incidence after 2013 reported in [27]. Only the scenarios that include an STI co-factor or behavioural changes (but not both) could confirm the higher mean SPVL with higher relational concurrency reported by Goodreau et al [12].

There are several potential reasons that none of the scenarios can explain the trends in SPVL reported in Gras et al. [14]. First, apart from treatment, sexual behaviour and STI co-factor effects, also factors related to viral evolution were reported to have an effect on the evolution of SPVL. However, to the best of our knowledge, no modeling framework is available that can incorporate treatment, sexual risk behaviour, STI co-infection and viral evolution into a single model. This will be explored in future research. Second, the

available data for this case study as reported in the literature is scarce. Making more data available will lead to better estimation of the model parameters, and possibly to improved models that can better explain the trends in SPVL observed in the literature. Furthermore, the data on SPVL from [14] (see Table 1) for 1995 are based on a considerably lower amount of persons than for 1985 and 2007, which creates uncertainty about the observed trends. According to Cumming and Finch [4], methods for significance testing based on confidence intervals (CI) are reliable when both sample sizes are equal or larger than 10, and when the margins of error differ not more than a factor 2. For 1995 the first condition is not fulfilled. This means that although a proportion overlap of 0.387 between the CIs for 1985 and 1995 is obtained, pointing to a significant difference between the two samples according to Cumming and Finch [4], there is uncertainty about the observed decrease between these two time points. Third, only a generic STI co-factor effect was included in the model. Including a more specific STI co-factor effect, e.g. a herpes simplex virus (HSV-2) co-factor effect where all stages of HSV-2 are described in detail may lead to improved models for this case study. However, such model has many more parameters than the model used in this study, and as a consequence requires more data than currently available for parameter estimation.

In summary, the results of this study suggest that both STI co-factors and sexual risk behaviour could influence SPVL, but cannot explain the trends described in the literature. Future research to understand SPVL evolution should also consider models that include factors related to viral evolution and describe STI co-factors in more detail. To accomplish these goals, more data has to be collected and made available.

Supporting Information

See supplementary.pdf

Acknowledgments

The research conducted by DMH and NH in this study was funded by the Fonds Wetenschappelijk Onderzoek - Vlaanderen (Research Foundation – Flanders; FWO, <http://www.fwo.be/en/>) (Grant agreements G0E8416N and G0B2317N).

WD was supported by a postdoctoral fellowship from FWO (12L5816N).

The computational resources and services used in this work were provided by the VSC (Flemish Supercomputer Center), funded by the Research Foundation - Flanders (FWO) and the Flemish Government – department EWI.

We thank Cécile Kremer (I-Biostat, Data Science Institute, UHasselt) for her support on the literature study to obtain the parameter settings described in Table S1 of the Supplementary Material.

References

1. D. Bezemer, F. de Wolf, M. C. Boerlijst, A. van Sighem, T. D. Hollingsworth, and C. Fraser. 27 years of the HIV epidemic amongst men having sex with men in the Netherlands: an in depth mathematical model-based analysis. *Epidemics*, 2(2):66–79, 2010.
2. K. Chen, S. Guo, Y. Lin, and Z. Ying. Least absolute relative error estimation. *Journal of the American Statistical Association*, 105(491):1104–1112, 2010.
3. L. A. Cotton, X. T. Kuang, A. Q. Le, J. M. Carlson, B. Chan, D. R. Chopera, C. J. Brumme, T. J. Markle, E. Martin, A. Shahid, et al. Genotypic and functional impact of HIV-1 adaptation to its host population during the North American epidemic. *PLoS genetics*, 10(4):e1004295, 2014.
4. G. Cumming and S. Finch. Inference by eye: confidence intervals and how to read pictures of data. *American Psychologist*, 60(2):170, 2005.

5. E. L. O. de Coul, I. Schreuder, S. Conti, A. van Sighem, M. Xiridou, M. G. Van Veen, and J. C. Heijne. Changing patterns of undiagnosed HIV infection in the Netherlands: who benefits most from intensified HIV test and treat policies? *PLoS One*, 10(7):e0133232, 2015.
6. D. Edo-Matas, A. Rachinger, L. C. Setiawan, B. D. Boeser-Nunnink, A. B. van't Wout, P. Lemey, and H. Schuitemaker. The evolution of human immunodeficiency virus type-1 (HIV-1) envelope molecular properties and coreceptor use at all stages of infection in an HIV-1 donor-recipient pair. *Virology*, 422(1):70–80, 2012.
7. S. P. Eholié, A. Badje, G. M. Kouame, J.-B. N'takpe, R. Moh, C. Danel, and X. Anglaret. Antiretroviral treatment regardless of CD4 count: the universal answer to a contextual question. *AIDS research and therapy*, 13(1):27, 2016.
8. C. Fraser, K. Lythgoe, G. E. Leventhal, G. Shirreff, T. D. Hollingsworth, S. Alizon, and S. Bonhoeffer. Virulence and pathogenesis of HIV-1 infection: an evolutionary perspective. *Science*, 343(6177):1243727, 2014.
9. R. B. Geskus, M. Prins, J.-B. Hubert, F. Miedema, B. Berkhout, C. Rouzioux, J.-F. Delfraissy, and L. Meyer. The HIV RNA setpoint theory revisited. *Retrovirology*, 4(1):65, 2007.
10. E. F. Gijssbers, H. Schuitemaker, and N. A. Kootstra. HIV-1 transmission and viral adaptation to the host. *Future Virology*, 7(1):63–71, 2012.
11. Global HIV Prevention Working Group. HIV prevention in the era of expanded treatment access. Technical report, Washington, DC: Kaiser Family Foundation, 2004.
12. S. M. Goodreau, S. E. Stansfield, J. T. Murphy, K. C. Peebles, G. S. Gottlieb, N. F. Abernethy, J. T. Herbeck, and J. E. Mittler. Relational concurrency, stages of infection, and the evolution of HIV set point viral load. *Virus Evolution*, 4(2):vey032, 2018.
13. L. Gras, R. B. Geskus, S. Jurriaans, M. Bakker, A. van Sighem, D. Bezemer, C. Fraser, J. M. Prins, B. Berkhout, F. de Wolf, et al. Has the rate of CD4 cell count decline before initiation of antiretroviral therapy changed over the course of the Dutch HIV epidemic among MSM? *PLoS One*, 8(5):e64437, 2013.
14. L. Gras, S. Jurriaans, M. Bakker, A. van Sighem, D. Bezemer, C. Fraser, J. Lange, J. M. Prins, B. Berkhout, F. de Wolf, et al. Viral load levels measured at set-point have risen over the last decade of the HIV epidemic in the Netherlands. *PLoS One*, 4(10):e7365, 2009.
15. S. Gupta and R. Granich. National HIV care continua for key populations: 2010 to 2016. *Journal of the International Association of Providers of AIDS Care (JIAPAC)*, 16(2):125–132, 2017.
16. J. Hargrove, H. Eastwood, G. Mahiane, and C. van Schalkwyk. How should we best estimate the mean recency duration for the BED method? *PloS one*, 7(11):e49661, 2012.
17. J. T. Herbeck, J. E. Mittler, G. S. Gottlieb, and J. I. Mullins. An HIV epidemic model based on viral load dynamics: value in assessing empirical trends in HIV virulence and community viral load. *PLoS computational biology*, 10(6):e1003673, 2014.
18. J. T. Herbeck, V. Müller, B. S. Maust, B. Ledergerber, C. Torti, S. Di Giambenedetto, L. Gras, H. F. Günthard, L. P. Jacobson, J. I. Mullins, et al. Is the virulence of HIV changing? A meta-analysis of trends in prognostic markers of HIV disease progression and transmission. *AIDS (London, England)*, 26(2):193, 2012.
19. E. L. Korenromp, B. G. Williams, G. P. Schmid, and C. Dye. Clinical prognostic value of RNA viral load and CD4 cell counts during untreated HIV-1 infection—a quantitative review. *PloS one*, 4(6):e5950, 2009.

20. T. S. Li, R. Tubiana, C. Katlama, V. Calvez, H. A. Mohand, and B. Autran. Long-lasting recovery in CD4 T-cell function and viral-load reduction after highly active antiretroviral therapy in advanced HIV-1 disease. *The Lancet*, 351(9117):1682–1686, 1998.
21. J. Liesenborgs, D. M. Hendrickx, E. Kuylen, D. Niyukuri, N. Hens, and W. Delva. SimpackCyan 1.0: An open-source simulator for individual-based models in HIV epidemiology with R and Python interfaces. *bioRxiv*, page 440834, 2018.
22. M. Nkuize, S. De Wit, V. Muls, M. Arvanitakis, and M. Buset. Upper gastrointestinal endoscopic findings in the era of highly active antiretroviral therapy. *HIV medicine*, 11(6):412–417, 2010.
23. D. K. Owens, V. Sundaram, L. C. Lazzeroni, L. R. Douglass, P. Tempio, M. Holodniy, G. D. Sanders, V. M. Shadle, V. C. McWhorter, T. Agoncillo, et al. HIV testing of at risk patients in a large integrated health care system. *Journal of general internal medicine*, 22(3):315–320, 2007.
24. H. E. Roberts, P. J. Goulder, and A. R. McLean. The impact of antiretroviral therapy on population-level virulence evolution of HIV-1. *Journal of the Royal Society Interface*, 12(113):20150888, 2015.
25. M. S. Saag, M. Holodniy, D. Kuritzkes, W. O’Brien, R. Coombs, M. Poscher, D. Jacobsen, G. Shaw, D. Richman, and P. Volberding. HIV viral load markers in clinical practice. *Nature medicine*, 2(6):625, 1996.
26. A. Y. C. Sanchez, M. Aerts, Z. Shkedy, P. Vickerman, F. Faggiano, G. Salamina, and N. Hens. A mathematical model for HIV and hepatitis C co-infection and its assessment from a statistical perspective. *Epidemics*, 5(1):56–66, 2013.
27. A. Sasse, J. Deblonde, D. Jamine, C. Ost, and D. Van Beckhoven. Epidemiologie van AIDS en HIV-infectie in België. Toestand op 31 december 2016 [Epidemiology of AIDS and HIV-infection in Belgium. Situation on December 16, 2016]. Technical report, Brussel: Wetenschappelijk Instituut Volksgezondheid, Afdeling Epidemiologie, 2017.
28. I. M. Schellens, M. Navis, H. W. van Deutekom, B. Boeser-Nunnink, B. Berkhout, N. Kootstra, F. Miedema, C. Kesmir, H. Schuitemaker, D. van Baarle, et al. Loss of HIV-1-derived cytotoxic T lymphocyte epitopes restricted by protective HLA-B alleles during the HIV-1 epidemic. *Aids*, 25(14):1691–1700, 2011.
29. G. Shirreff, L. Pellis, O. Laeyendecker, and C. Fraser. Transmission selects for HIV-1 strains of intermediate virulence: a modelling approach. *PLoS computational biology*, 7(10):e1002185, 2011.
30. D. R. Smith and N. Mideo. Modelling the evolution of HIV-1 virulence in response to imperfect therapy and prophylaxis. *Evolutionary applications*, 10(3):297–309, 2017.
31. M. Stein. Large sample properties of simulations using Latin hypercube sampling. *Technometrics*, 29(2):143–151, 1987.
32. A. C. van der Kuyl, M. Bakker, S. Jurriaans, N. K. Back, A. O. Pasternak, M. Cornelissen, and B. Berkhout. Translational HIV-1 research: from routine diagnostics to new virology insights in Amsterdam, the Netherlands during 1983–2013. *Retrovirology*, 10(1):93, 2013.
33. D. van Manen, L. Gras, B. D. Boeser-Nunnink, A. I. van Sighem, I. Maurer, M. M. M. Ruiz, A. M. Harskamp, R. Steingrover, J. M. Prins, F. de Wolf, et al. Rising HIV-1 viral load set point at a population level coincides with a fading impact of host genetic factors on HIV-1 control. *Aids*, 25(18):2217–2226, 2011.
34. L. Willem, S. Stijven, E. Vladislavleva, J. Broeckhove, P. Beutels, and N. Hens. Active learning to understand infectious disease models and improve policy making. *PLoS computational biology*, 10(4):e1003563, 2014.

35. L. Yue, H. A. Prentice, P. Farmer, W. Song, D. He, S. Lakhi, P. Goepfert, J. Gilmour, S. Allen, J. Tang, et al. Cumulative impact of host and viral factors on HIV-1 viral-load control during early infection. *Journal of virology*, 87(2):708–715, 2013.