

1 – Quality of care at safety-net hospitals

## **Quality of care at safety-net hospitals and the impact on pay-for-performance reimbursement**

Reith R. Sarkar MD, MAS<sup>1,2</sup>, Patrick T. Courtney BA<sup>1,2</sup>, Katie Bachand<sup>2</sup>, Paige Sheridan MPH<sup>2</sup>,  
Paul Riviere BS<sup>1,2</sup>, Zachary D. Guss MD<sup>3</sup>, Christian R. Lopez MD, MAS, MPH<sup>1</sup>, Michael G.  
Brandel MD, MAS<sup>1</sup>, Matthew P. Banegas PhD, MPH<sup>4</sup>, James D. Murphy MD, MS<sup>1,2</sup>

<sup>1</sup>University of California San Diego School of Medicine, <sup>2</sup>Department of Radiation Medicine  
and Applied Sciences, <sup>3</sup>Department of Radiation Oncology, Johns Hopkins, Baltimore, MD, and  
<sup>4</sup>Center for Health Research, Kaiser Permanente Northwest, Portland, OR

### **Correspondence to:**

James D. Murphy, M.D., M.S.

University of California, San Diego

Altman Clinical and Translational Research Institute

9452 Medical Center Dr

La Jolla, CA 92037

Tel: 858-822-6080 / Fax: 858-246-1505/email: [j2murphy@ucsd.edu](mailto:j2murphy@ucsd.edu)

**Support:** NIH TL1 TR001443 (RRS, PTC, PR, MGB), NIH U54 CA132379 (JDM)

**Disclosures:** RRS and JDM receive compensation for consulting from Boston Consulting Group.

PR receives compensation for consulting from Peptide Logic, LLC.

## 2 – Quality of care at safety-net hospitals

### **Abstract**

#### **Background**

Pay-for-performance reimbursement ties hospital payments to standardized quality of care metrics. The impact of pay-for-performance reimbursement models on safety-net hospitals, which care primarily for uninsured or underinsured patients, remains poorly defined. This study evaluates how standardized quality of care metrics vary by a hospital's safety-net status, and helps us better understand the potential impact that pay-for-performance reimbursement could have on funding of safety-net hospitals.

#### **Methods**

We identified 1,703,865 bladder, breast, cervix, colon, endometrium, gastric, lung, ovary, or rectum cancer patients treated at 1,344 hospitals diagnosed between 2004 and 2015. Safety-net burden was defined for each hospital as the percentage of uninsured or Medicaid patients cared for by that hospital. Hospitals were grouped into low-, medium-, and high-burden hospitals. We evaluated the impact of safety-net burden on concordance with 20 standardized quality of care measures, adjusting for differences in patient age, gender, stage at diagnosis, and comorbidity.

#### **Results**

Patients seen at high-burden hospitals were more likely to be young, male, black, Hispanic, and to reside in a low-income and low-educated region. High-burden hospitals had lower adherence to 13 of 20 quality measures compared to low-burden hospitals (all  $p < 0.05$ ). Among the 350 high-burden hospitals, the quality measures were lowest for those caring for the highest fraction of uninsured or Medicaid patients, minority serving hospitals, and those caring for less educated patients (all  $p < 0.001$ ).

### 3 – Quality of care at safety-net hospitals

#### **Discussion**

Cancer care at safety-net hospitals was associated with lower concordance to standardized quality of care measures. Under a pay-for-performance reimbursement model these lower quality of care scores could decrease payments to safety-net hospitals, potentially increasing health disparities for at-risk cancer patients.

#### 4 – Quality of care at safety-net hospitals

### **Background**

Reimbursement for healthcare in the United States (US) has steadily moved from a fee-for-service reimbursement model to pay-for-performance or value-based reimbursement models<sup>1-3</sup>. Paying providers and hospitals for high quality care (pay-for-performance), as opposed to simply paying for providing care (fee-for-service), appeals to multiple stakeholders. Modern pay-for-performance reimbursement strategies depend on standardized assessments of quality of care, and typically hospitals with higher aggregate quality scores receive performance bonuses, whereas hospitals performing poorly incur financial penalties. In general, the quality of care metrics used to define reimbursement are adjusted to account for differences in patient age, gender, geography, disease severity, and underlying patient comorbidity. However, payers such as Medicare typically do not account for differences in race, ethnicity, socioeconomic status, or other social determinants of health, based on the argument that hospitals with higher percentages of underserved patients should not be held to a lower standard of care<sup>4</sup>.

Safety-net hospitals provide care for a large proportion of uninsured and Medicaid-insured patients, and overall provide a valuable service for underserved individuals across the US<sup>5-7</sup>. Given the insurance status of patients cared for by safety-net hospitals, these institutions at baseline receive lower reimbursement for providing healthcare, and therefore often struggle financially<sup>8</sup>. Furthermore, the population of patients treated by safety-net hospitals often face social, economic, and logistic barriers to receiving high quality timely healthcare<sup>9-11</sup>. Under a pay-for-performance reimbursement model, these barriers to providing high quality care could reduce hospital revenue for safety-net-hospitals, which could indirectly widen health disparities among an at-risk population of patients. In areas outside of oncology, research demonstrates that pay-for-performance reimbursement policies could lead to decreased payments to hospitals

## 5 – Quality of care at safety-net hospitals

caring for underserved patients<sup>12,13</sup>, though this question has not been addressed within the field of oncology. We hypothesize that the complex and multidisciplinary treatment required for timely, high quality cancer care could lead to decreased quality of cancer care at safety-net hospitals. This in turn could lead to decreased reimbursement under a pay-for-performance reimbursement model. The purpose of this study was to evaluate the relationship between safety-net hospitals and standard quality of care metrics in a large population-based cohort of cancer patients. Understanding this relationship will provide insight into the impact that pay-for-performance reimbursement for oncology could have on safety-net hospitals.

## 6 – Quality of care at safety-net hospitals

### **Methods**

#### **Data source**

Patients were identified from the National Cancer Database (NCDB), which is a large cancer registry jointly supported by the American College of Surgeons and the American Cancer Society. The NCDB represents a hospital-based cancer registry that collects patient clinical and treatment data on incident cancer cases diagnosed from over 1,500 facilities, which covers 70% of cancer cases diagnosed each year in the United States.

#### **Quality of care measures**

The Commission on Cancer (CoC) is a consortium of professional organizations dedicated to improving survival and quality of life for cancer patients through standard-setting, prevention, research, education, and the monitoring of comprehensive quality care<sup>14</sup>. The CoC has produced several cancer quality of care measures which directly draw from data collected within cancer registries<sup>15</sup>. Each quality measure focuses on one of three areas: accountability, quality improvement, or surveillance. *Accountability* measures are backed by high levels of evidence typically including multiple randomized trials. *Quality improvement* measures are not backed by randomized trials, and are derived from lower levels of non-randomized evidence. *Surveillance* measures have more limited evidence, and often reflect the status quo. We evaluated 20 quality of care measures across nine cancer sites: bladder, breast, cervix, colon, endometrium, gastric, non-small cell lung, ovary, and rectum. Descriptions of the 20 quality of care measures included in this study are included in **Table 1**.

## 7 – Quality of care at safety-net hospitals

### **Patient selection**

The individual quality of care measures inherently assess quality among patients with different tumor sites, stages and treatments. Our initial patient selection strategy within NCDB identified patients using standard inclusion criteria to identify eligible patients for each quality metric<sup>16</sup>. This initial query identified 1,762,441 patients aged 18 and over with the appropriate stage and treatment diagnosed between 2004 and 2015. Our estimation of hospital safety-net status required knowledge of insurance status, therefore our initial query only included subjects with known insurance status. We excluded 58,576 patients with missing tumor- or treatment-related variables required to calculate specific quality of care endpoints. **Supplementary Table 1** demonstrates details of the patient selection process. There was no difference in the proportions of Medicaid and uninsured patients versus insured patients included in the initial query compared to the final study cohort. The final study cohort included 1,703,865 patients (**Table 2**).

### **Hospital safety-net burden**

As defined by the Institute of Medicine, healthcare safety-net hospitals refer to facilities that deliver a significant level of healthcare to patients with no insurance or Medicaid<sup>17</sup>. We defined each hospital's safety-net burden as the proportion of cancer patients cared for throughout the study period without insurance or with Medicaid. To measure safety-net burden, we used all solid tumor cancer patients within NCDB diagnosed between 2004 and 2015 with known insurance status (4,696,779 patients), as opposed to using only patients in this study. Similar to prior research, we divided hospitals by safety-net burden into quartiles and assigned the lowest quartile as *low-burden hospitals*, the middle 2 quartiles as *medium-burden hospitals*, and the highest quartile as *high-burden hospitals*<sup>18</sup>. Therefore, high burden hospitals care for the largest fraction of uninsured or Medicaid patients.

## 8 – Quality of care at safety-net hospitals

### **Study covariables**

Study covariables included patient factors such as age at diagnosis, year of diagnosis, gender, race, ethnicity, and Charlson comorbidity score. Socioeconomic information included zip-code level median household income and high school graduation rate. Clinical factors included AJCC 6/7<sup>th</sup> edition tumor stage.

### **Statistical analysis**

Pearson chi-square tests and Wilcoxon rank sum tests were used to identify differences in patient characteristics by hospital safety-net burden group. We calculated quality metric concordance rates for each of the 20 quality metrics, defined as the fraction of patients receiving concordant care stratified by safety-net status. Keeping consistent with Medicare’s pay-for-performance reimbursement models, we risk-adjusted our quality concordance rates to remove the hospital-specific imbalance of patient age, gender, comorbidity, and differences in stage at presentation<sup>4,19-22</sup>.

We conducted subset analyses among high-burden hospitals to determine how quality metric concordance rates vary by different hospital characteristics. This subset analysis evaluated the total hospital concordance level with all metrics. Hospital characteristics assessed included the hospital safety-net burden (fraction of uninsured or Medicaid patients), as well as the proportion of minority patients the hospital serves (non-White or Hispanic patients), and income and education level of patients. This subset analysis consisted of a linear regression treating each hospital as an independent observation, weighting the hospitals by their patient volume.

Statistical analyses were conducted with SAS (Version 9.4; SAS Institute Inc., Cary, NC), and regression figures were generated with R (Version 3.6.1; The R Foundation for Statistical



## 9 – Quality of care at safety-net hospitals

Computing, Vienna, Austria). Statistical tests were two-sided, and p-values < 0.05 were considered statistically significant.

## **Results**

### **Hospital and patient characteristics**

Our study cohort included 1,703,865 cancer patients treated at 1,344 hospitals. This included 326 low-burden hospitals (lowest quartile of uninsured or Medicaid patients), 668 middle-burden hospitals, and 350 high-burden hospitals (highest quartile of uninsured or Medicaid patients). High-burden hospitals treated a median of 13.4% uninsured or Medicaid patients, compared to 7.7% for middle-burden hospitals, and 3.9% for low-burden hospitals. In general, higher-burden hospitals were more likely to be academic and located in the Midwest and West, compared to middle- and low-burden hospitals. High-burden hospitals were also more likely to treat black, Hispanic, younger, male, low education, low income, and advanced stage patients compared to middle- and low-burden hospitals. See **Table 2** for full descriptive characteristics of the study subjects stratified by hospital.

### **Concordance with quality of care measures**

The general level of quality metric concordance across the whole study population varied substantially by the individual quality metric, ranging from a low of 37.5% with appropriate lymph node removal in surgery for lung cancer to a high of 91.0% with appropriate radiation after breast conserving surgery (**Table 3**). Quality metrics involving surgery (appropriate surgery or lymph node removal) had the lowest concordance rates (mean 67.7%), followed by radiation alone (78.2%), chemotherapy or hormonal therapy alone (79.1%), and combination chemotherapy/radiation (81.1%). High-burden hospitals were significantly less likely to meet

## 10 – Quality of care at safety-net hospitals

recommendations for 13 of 20 quality measures (65%) compared to low-burden hospitals (**Table 3**). Among the underperforming low-burden hospitals, the quality gap in concordance levels between high- and low-burden hospitals ranged from 2.1% to 11.1%. High-burden hospitals underperformed low-burden hospitals in 4 of 8 quality measures related to surgery (50%), in 5 of 5 quality measures related to chemotherapy or hormonal therapy alone (100%), in 3 of 4 quality measures related to radiotherapy alone (75%), and in 1 of 3 quality measures related to combination chemoradiotherapy (33.3%). Of note, high-burden hospitals underperformed low-burden hospitals in 5 of 5 “accountability” quality measures (100%) which reflect measures backed by the highest levels of evidence. In 1 of 20 quality measures, the high-burden hospitals outperformed low burden hospitals – this specific quality metric represented overuse of surgery in lung cancer, with low-burden hospitals more likely to overuse surgery compared to high-burden hospitals.

### **Variation in quality among high-burden hospitals**

Among the 350 high-burden hospitals, we found that overall hospital guideline concordance rates varied by hospital characteristics (**Figure 1**). Hospitals caring for larger fractions of uninsured or Medicaid patients (**Figure 1A**), minority serving hospitals (**Figure 1B**), and hospitals caring for less educated patients (**Figure 1D**) all had significantly lower levels of guideline concordance with quality measures (all  $p < 0.001$ ). We found no correlation between income level of patients and guideline concordance rates (**Figure 1C**;  $p = 0.43$ ).

### **Discussion**

This current study with over 1.7 million cancer patients demonstrates that hospitals caring for a disproportionate number of uninsured or Medicaid patients have a lower likelihood of providing

## 11 – Quality of care at safety-net hospitals

care concordant with standard quality measures. While our study represents the first to evaluate concordance with quality of care measures, others have studied patterns of care and outcomes at safety-net hospitals. Themes that arise among patients treated at high-burden hospitals include longer hospital stays, higher rates of operative complications, increased mortality, and increased costs of care<sup>18,23,24</sup>. Our study supports this existing literature, and overall research demonstrates a consistent association between high-burden hospitals and decreased quality of care.

The association between hospital safety-net status and decreased quality of care represents an important point worth further discussion. One must consider that this association between hospital safety-net status and patient outcomes does not imply causality. Safety-net hospitals by definition provide care for poor and disadvantaged patients. This current study supports prior research<sup>25,26</sup>, which demonstrates that hospitals with a higher safety-net burden care for a higher fraction of racial and ethnic minorities, with decreased income, lower levels of education, and more advanced stage cancer on presentation. These at-risk patients may have economic, social, or health care access-related barriers which directly influence the quality and timeliness of care. A substantial body of literature demonstrates that these social determinants of health independently influence patterns of healthcare delivery<sup>27,28</sup>. Hospitals should strive to provide equal care to all patients irrespective of their sociodemographic backgrounds; however, providing high quality timely care can prove challenging with our most underserved patients.

Healthcare is rapidly transitioning from a fee-for-service reimbursement model to pay-for-performance reimbursement, which strives to reward hospitals and providers for delivering high-quality healthcare. While pay-for-performance reimbursement models may appeal to both payers and stakeholders, one must consider the impact these alternative reimbursement policies will have on health disparities. In general, quality of care measurements represent a central

## 12 – Quality of care at safety-net hospitals

feature in value-based reimbursement models. For example, the Oncology Care Model, an alternative payment model currently being piloted by CMS, includes four clinical care quality measures<sup>29</sup>. Three of these four quality measures were evaluated in this current study, and high-burden hospitals underperformed low-burden hospitals in all three (chemotherapy in colon cancer, chemotherapy in breast cancer, hormone therapy in breast cancer). Similar to CMS, private insurers are also piloting alternative payment models<sup>30-32</sup>. This current study points to a concerning reality that moving to a pay-for-performance reimbursement paradigm in oncology may further decrease payments to hospitals caring for underserved and minority patients.

This current study highlights another area of concern in that among safety-net hospitals, those with the lowest concordance with quality metrics cared for the highest fraction of underinsured, minority, and uneducated patients. This suggests that hospitals caring for the most at-risk patients may incur the highest financial penalties under pay-for-performance reimbursement models. Our finding of safety-net hospital vulnerability with oncology reimbursement supports research in other areas in healthcare demonstrating that value-based payments can exacerbate health disparities<sup>33</sup>. A recent study by Chen et al., evaluated the Medicare Physician Value-Based Payment Modifier Program, initiated in 2015, which provides bonuses to practices based on quality and costs of care. This study found that practices caring for more socially at risk patients had lower quality scores, fewer bonuses and more penalties<sup>34</sup>. This so-called “reverse Robin Hood” effect takes money from underserved hospitals (in the form of penalties) and gives it to wealthier hospitals (in the form of bonuses)<sup>35</sup>.

Ideally, payment models should strive to define fair, equitable, and non-discriminatory quality measures upon which to base reimbursement. However, identifying good quality measures independent of race or socioeconomic status in oncology, and in medicine in general,

### 13 – Quality of care at safety-net hospitals

can prove difficult<sup>36</sup>. Regardless, value-based reimbursement models should consider actionable solutions to avoid expanding health disparities. Adjusting quality scores for a patient's race and socioeconomic status represents one potential solution. While this approach might help reduce the reimbursement gap it also in theory sends a message that poor quality of care is acceptable at hospitals serving underserved patients. Another pay-for-performance approach to minimize disparities would include comparing “apples to apples”<sup>33</sup> – or in other words, compare hospitals based on their patient-risk profile. This would include comparing performance for safety-net hospitals to other safety-net hospitals, which research demonstrates has the potential to substantially reduce disparities in payments across organizations<sup>37</sup>. Regardless of the solution, researchers and policymakers should continue to focus on the complex intersection of reimbursement policy and health equity to help optimize patient care for the underserved.

This retrospective observational study has potential limitations worth considering. First, the NCDB does not capture information on patient variables including performance status, body habitus, smoking status, and other risk factors which may help explain the differences in concordance to quality of care measures. However, it would be unlikely for these risk factors to factor into any risk-adjustment protocol given the difficulty of measuring these data points at a national level. Overall, the data recorded within NCDB reflect the data used in current quality measures in oncology<sup>29</sup>. Another potential limitation refers to generalizability. While the NCDB includes over 70% of incident cancer cases in the US, this only includes Commission on Cancer accredited facilities. Given the barriers to accreditation and costs associated with data collection, it is likely that under-resourced safety-net hospitals could be underrepresented in our study population. However, including these more under-resourced facilities in our study may in fact widen the gap between high-burden and low-burden hospitals, though more research is needed to

#### 14 – Quality of care at safety-net hospitals

address this question. Lastly, our assessment of guideline concordance depends on data captured by individual hospital registrars. Any inaccuracies in data collection would result in misclassification of our endpoints, and could influence our results. However, individual facilities undergo credentialing and internal quality assurance procedures<sup>38</sup> to assure high quality of data collection. Despite this internal quality assurance, misclassification could add bias to the study findings. Though one must consider that the data captured by registrars is the same data used to determine hospital performance metrics, therefore this misclassifications would translate into bonuses or penalties under a pay-for-performance reimbursement model.

Despite these limitations, our results highlight a concerning pattern of diminished quality of care among hospitals caring for disproportionate numbers of uninsured or Medicaid patients. These differences in quality of care in part reflect the social and economic challenges faced by our underserved patients. As we move towards pay-for-performance healthcare, these quality gaps will translate to reimbursement gaps, which could in fact exacerbate health disparities among our underserved population. Value-based reimbursement represents the future of healthcare; however, policymakers must remain cognizant of the impact that reimbursement policy has on our at-risk population.

**Table 1. Definition of Quality Measures**

<b>Quality Metric</b>	<b>Measure Type*</b>	<b>Measure Description</b>
<b>Bladder</b>		
Appropriate lymph node removal	Surveillance	At least 2 lymph nodes are removed in patients under 80 undergoing partial or radical cystectomy
Appropriate surgery	Surveillance	Radical or partial cystectomy; or tri-modality therapy (local tumor destruction/excision with chemotherapy and radiation) for clinical T2-4N0M0 patients, first treatment within 90 days of diagnosis
Appropriate chemotherapy	Surveillance	Neo-adjuvant or adjuvant chemotherapy offered or administered for patients with muscle invasive cancer undergoing radical cystectomy
<b>Breast</b>		
Appropriate radiation after breast conserving surgery	Accountability	Radiation therapy is administered within 1 year (365 days) of diagnosis for women under age 70 receiving breast conserving surgery for breast cancer
Appropriate chemotherapy	Accountability	Combination chemotherapy is recommended or administered within 4 months (120 days) of diagnosis for women under 70 with T1cN0M0, or stage IB - III hormone receptor negative breast cancer
Appropriate hormone therapy	Accountability	Tamoxifen or third generation aromatase inhibitor is recommended or administered within 1 year (365 days) of diagnosis for women with T1cN0M0, or stage IB - III hormone receptor-positive breast cancer.
Appropriate radiation after mastectomy	Accountability	Radiation therapy is recommended or administered following any mastectomy within 1 year (365 days) of diagnosis of breast cancer for women with $\geq 4$ positive regional lymph nodes.
<b>Cervix</b>		
Appropriate brachytherapy	Surveillance	Use of brachytherapy in patients treated with primary radiation with curative intent in any stage of cervical cancer
Appropriate radiation timing	Surveillance	Radiation therapy completed within 60 days of initiation of radiation among women diagnosed with any stage of cervical cancer
Appropriate chemotherapy and radiation	Surveillance	Chemotherapy administered to cervical cancer patients who received radiation for stages IB2-IV cancer or with positive pelvic nodes, positive surgical margin, and/or positive parametrium
<b>Colon</b>		

16 – Quality of care at safety-net hospitals

Appropriate chemotherapy	Accountability	Adjuvant chemotherapy is recommended or administered within 4 months (120 days) of diagnosis for patients under the age of 80 with AJCC stage III (lymph node positive) colon cancer
Appropriate lymph node removal	Quality Improvement	At least 12 regional lymph nodes are removed and pathologically examined for resected colon cancer
<b>Endometrium</b>		
Appropriate chemotherapy and radiation	Surveillance	Chemotherapy and/or radiation administered to patients with stage IIIC or IV Endometrial cancer
Appropriate surgery	Surveillance	Endoscopic, laparoscopic, or robotic surgery performed for all endometrial cancer (excluding sarcoma and lymphoma), for all stages except stage IV
<b>Gastric</b>		
Appropriate lymph node removal	Quality Improvement	At least 15 regional lymph nodes are removed and pathologically examined for resected gastric cancer.
<b>Non-Small Cell Lung</b>		
Appropriate lymph node removal	Surveillance	At least 10 regional lymph nodes are removed and pathologically examined for AJCC stage IA, IB, IIA, and IIB resected NSCLC
Appropriate chemotherapy	Quality Improvement	Systemic chemotherapy is administered within 4 months to day preoperatively or day of surgery to 6 months postoperatively, or it is recommended for surgically resected cases with pathologic, lymph node-positive (pN1) and (pN2) NSCLC.
Appropriate surgery	Quality Improvement	Surgery is not the first course of treatment for cN2, M0 lung cases
<b>Ovary</b>		
Appropriate surgery	Surveillance	Salpingo-oophorectomy with omentectomy, debulking; cytoreductive surgery, or pelvic exenteration in stage I-IIIC ovarian cancer
<b>Rectum</b>		
Appropriate chemotherapy and radiation	Quality Improvement	Preoperative chemo and radiation are administered for clinical AJCC T3N0, T4N0, or stage III; or postoperative chemo and radiation are administered within 180 days of diagnosis for clinical AJCC T1-2N0 with pathologic AJCC T3N0, T4N0, or stage III; or treatment is recommended; for patients under the age of 80 receiving resection for rectal cancer.

\* With Measure Type the *Accountability* measurements are backed by high levels of evidence typically including multiple randomized trials; *Quality Improvement* measures are not backed by randomized trials, though come from lower levels of non-randomized evidence; and *Surveillance* measures have more limited evidence, though often reflect the status quo.



**Table 2. Patient Characteristics**

Characteristic	All patients	Hospital Burden		
		Low	Medium	High
<b>Number of patients</b>	1,703,865	443,997	849,098	410,770
<b>Number of facilities</b>	1,344	326	668	350
<b>Median safety-net burden % (IQR)</b>	7.6 (5.1-10.2)	3.9 (2.8-4.6)	7.7 (6.6-9.0)	13.4 (11.7-16.8)
<b>Facility type</b>				
Academic	548,522 (32)	130,836 (29)	218,803 (26)	198,883 (48)
Community	895,097 (53)	257,441 (58)	482,855 (57)	154,801 (38)
Other	260,246 (15)	55,720 (13)	147,440 (17)	57,086 (14)
<b>Median age (IQR)</b>	61 (52-70)	62 (52-70)	62 (52-70)	60 (51-69)
<b>Gender</b>				
Female	1,434,381 (84)	378,601 (85)	711,436 (84)	344,344 (84)
Male	269,484 (16)	65,396 (15)	137,662 (16)	66,426 (16)
<b>Race/Ethnicity</b>				
Non-Hispanic white	1,278,296 (75)	348,818 (79)	657,006 (77)	272,472 (66)
Non-Hispanic black	175,437 (10)	33,459 (7.5)	78,152 (9.2)	63,826 (16)
Hispanic	182,518 (11)	43,795 (9.9)	84,067 (9.9)	54,656 (13)
Other	67,614 (4.0)	17,925 (4.0)	29,873 (3.5)	19,816 (4.8)
<b>Education</b>				
≤7% no high school graduation	435,618 (26)	168,806 (38)	208,248 (25)	58,564 (14)
7%-12.9% no high school graduation	557,576 (33)	152,108 (34)	295,874 (35)	109,594 (27)
13%-20.9% no high school graduation	425,143 (25)	79,909 (18)	220,926 (26)	124,308 (30)
≥21% no high school graduation	271,072 (16)	39,234 (8.8)	116,981 (14)	114,857 (28)
Unknown	14,456 (0.8)	3,940 (0.9)	7,069 (0.8)	3,447 (0.8)
<b>Median household income</b>				
Bottom quartile	279,273 (16)	35,644 (8.0)	133,167 (16)	110,462 (27)
2nd quartile	378,803 (22)	64,416 (15)	205,932 (24)	108,455 (26)
3rd quartile	452,131 (27)	110,851 (25)	242,221 (29)	99,059 (24)
Top quartile	578,449 (34)	228,937 (52)	260,378 (31)	89,134 (22)
Unknown	15,209 (0.9)	4,149 (0.9)	7,400 (0.9)	3,660 (0.9)
<b>Region</b>				
East	353,837 (21)	139,125 (31)	152,943 (18)	61,769 (15)

18 – Quality of care at safety-net hospitals

Midwest	425,688 (25)	133,665 (30)	216,055 (25)	75,968 (19)
South	588,918 (35)	105,337 (24)	305,731 (36)	177,850 (43)
West	257,393 (15)	47,173 (11)	137,934 (16)	72,286 (18)
Unknown	78,029 (4.6)	18,697 (4.2)	36,435 (4.3)	22,897 (5.6)
<b>Year of Diagnosis</b>				
2004-2007	459,960 (27)	117,960 (27)	231,690 (27)	110,310 (27)
2008-2011	592,045 (35)	155,339 (35)	294,980 (35)	141,726 (34)
2012-2015	651,860 (38)	170,698 (38)	322,428 (38)	158,734 (39)
<b>Charlson Comorbidity</b>				
0	1,309,647 (77)	349,448 (79)	644,626 (76)	315,573 (77)
≥1	394,218 (23)	94,549 (21)	204,472 (24)	95,197 (23)
<b>Primary Tumor Site</b>				
Bladder	29,129 (1.7)	7,418 (1.7)	14,401 (1.7)	7,310 (1.8)
Breast	900,707 (53)	243,567 (55)	451,810 (53)	205,330 (50)
Cervix	50,650 (3.0)	7,924 (1.8)	22,090 (2.6)	20,636 (5.0)
Colon	119,251 (7.0)	32,731 (7.4)	61,2952 (7.2)	25,268 (6.2)
Lung	279,185 (16)	66,963 (15)	144,750 (17)	67,472 (16)
Rectum	55,973 (3.3)	14,653 (3.3)	27,686 (3.3)	13,634 (3.3)
Uterus	165,331 (9.7)	44,383 (10)	78,611 (9.3)	42,337 (10)
Gastric	32,201 (1.9)	7,601 (1.7)	14,861 (1.7)	9,739 (2.4)
Ovary	71,438 (4.2)	18,757 (4.2)	33,637 (4.0)	19,044 (4.6)
<b>AJCC Stage</b>				
I	724,008 (43)	200,332 (45)	361,171 (43)	162,505 (40)
II	440,248 (26)	114,950 (26)	221,118 (26)	104,180 (25)
III	272,620 (16)	68,953 (16)	133,738 (16)	69,929 (17)
IV	22,705 (1.3)	5,481 (1.2)	10,582 (1.2)	6,642 (1.6)
Unknown	244,284 (14)	54,281 (12)	122,489 (14)	67,514 (16)

Numbers in this table refer to the number of each patients in that group, with percentages in parentheses.

*Abbreviations:* IQR = interquartile range; AJCC = American Joint Committee on Cancer

**Table 3. Concordance with Quality Measures by Safety-Net Burden**

Quality Measure	N	All hospitals <sup>‡</sup>	Adjusted quality metric concordance rate*			Difference between high-burden and low-burden hospitals	
			Low-burden hospitals	Middle-Burden hospitals	High-burden hospitals	Percent difference	p-value
<b>Bladder</b>							
Appropriate lymph node removal	16,879	86.0%	87.6%	84.3%	87.7%	-0.1%	0.26
Appropriate surgery	26,660	62.5%	63.3%	62.6%	61.3%	-2.1%	0.0002
Appropriate chemotherapy	12,018	47.5%	50.1%	46.3%	47.1%	-3.0%	0.01
<b>Breast</b>							
Appropriate radiation after breast conserving surgery	506,058	91.0%	92.0%	91.4%	88.6%	-3.4%	<.0001
Appropriate chemotherapy	109,358	87.5%	88.7%	88.1%	85.2%	-3.5%	<.0001
Appropriate hormone therapy	524,199	88.7%	90.2%	88.8%	86.8%	-3.5%	<.0001
Appropriate radiation after mastectomy	77,537	79.9%	81.5%	80.6%	77.1%	-4.4%	<.0001
<b>Cervix</b>							
Appropriate brachytherapy	32,615	65.3%	65.5%	65.2%	65.3%	-0.3%	0.97
Appropriate radiation timing	30,911	76.6%	78.5%	76.5%	75.8%	-2.7%	0.02
Appropriate chemotherapy and radiation	40,798	86.2%	86.4%	86.1%	86.1%	-0.3%	0.91
<b>Colon</b>							
Appropriate chemotherapy	23,794	90.0%	92.0%	90.1%	87.7%	-4.3%	<.0001
Appropriate lymph node removal	114,575	84.3%	86.0%	83.9%	83.0%	-3.0%	0.0007
<b>Endometrium</b>							
Appropriate chemotherapy and radiation	27,170	76.5%	76.5%	76.5%	76.6%	0.1%	0.08
Appropriate surgery	152,643	67.3%	70.6%	69.6%	59.5%	-11.1%	<.0001
<b>Gastric</b>							
Appropriate lymph node removal	32,201	46.7%	48.4%	45.0%	47.9%	-0.5%	0.95
<b>Non-Small Cell Lung</b>							
Appropriate lymph node removal	151,029	37.5%	38.7%	37.2%	36.7%	-2.0%	0.11
Appropriate chemotherapy	41,901	81.9%	83.0%	82.2%	80.0%	-3.0%	0.0006
Appropriate surgery	106,636	90.1%	89.8%	90.1%	90.6%	0.8%	0.02

20 – Quality of care at safety-net hospitals

**Ovary**

Appropriate surgery	71,438	67.4%	68.7%	68.3%	64.4%	-4.2%	0.0001
---------------------	--------	-------	-------	-------	-------	-------	--------

**Rectum**

Appropriate chemotherapy and radiation	55,973	80.5%	81.5%	80.6%	79.3%	-2.2%	0.003
--	--------	-------	-------	-------	-------	-------	-------

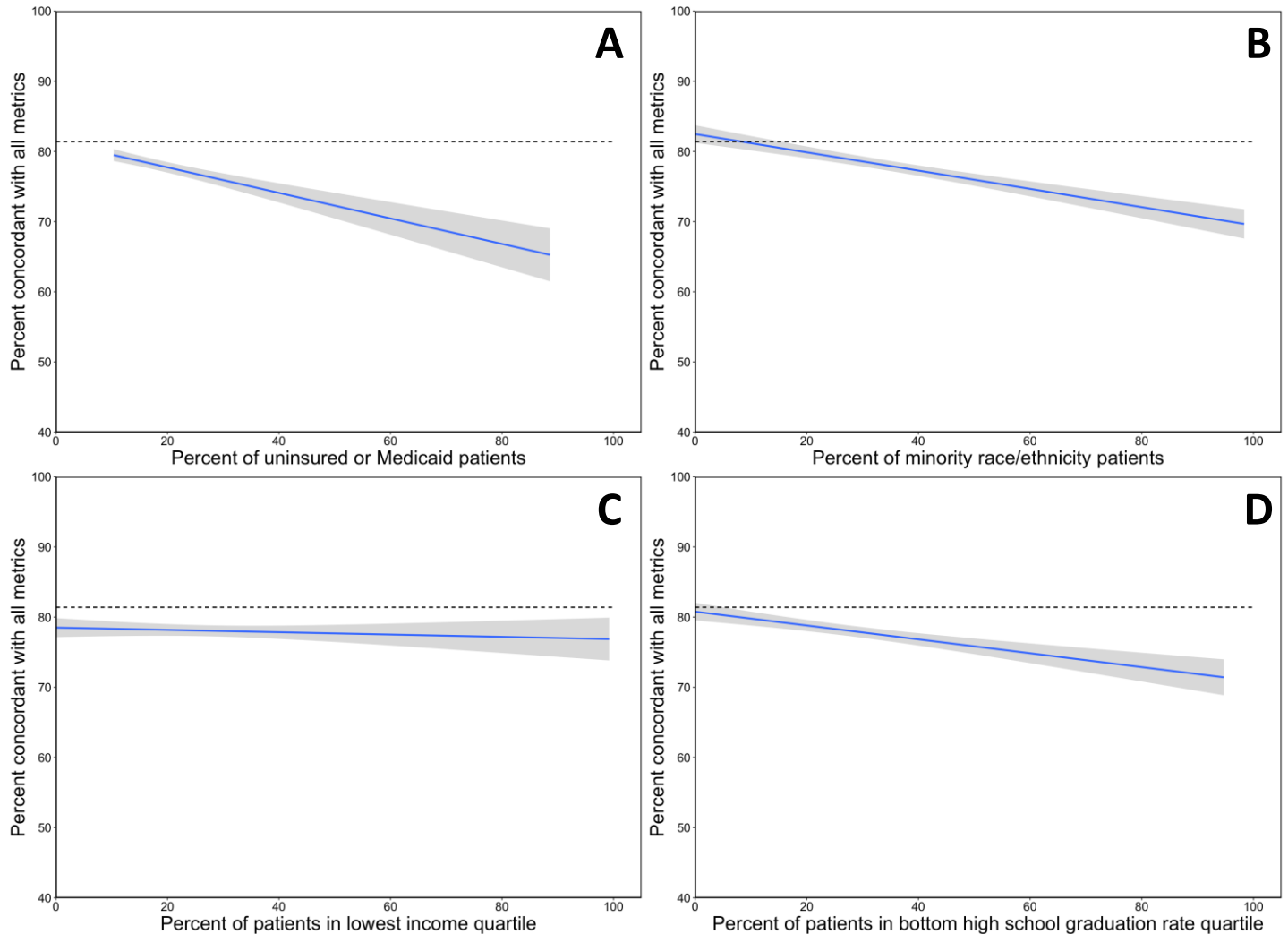
---

‡ Quality metric concordance rates across all hospitals were unadjusted.

\* Quality metric concordance rates were adjusted for patient age, gender, comorbidity, and patient stage at presentation.

21 – Quality of care at safety-net hospitals

**Figure 1. Correlation between hospital characteristics and concordance with quality metrics.**



This figure represents an analysis among the high-burden hospitals (hospitals caring for highest quartile of uninsured or Medicaid patients) comparing hospital-wide characteristics to concordance with quality of care metrics. The solid line represents the relationship between hospital characteristic and concordance level, and the shaded region represents the 95% confidence band. The dotted line represents the average quality metric concordance level among low- and medium-burden hospitals (81.6%).

## 22 – Quality of care at safety-net hospitals

### REFERENCES

1. New England Journal of Medicine Catalyst: What Is Pay for Performance in Healthcare? New England Journal of Medicine Catalyst, Massachusetts Medical Society, 2018
2. Kuhmerker K, Hartman T: Pay-For-Performance In State Medicaid Programs: A Survey of State Medicaid Directors and Programs. The Commonwealth Fund, 2007
3. Rosenthal MB, Landon BE, Normand S-LT, et al: Pay for Performance in Commercial HMOs. *New England Journal of Medicine* 355:1895-1902, 2006
4. Suter LG, Vellanky S, Li S-X, et al: Medicare Hospital Quality Chartbook 2012: Performance Report on Outcome Measures in Yale New Haven Health Services Corporation Center for Outcomes Research and Evaluation (ed), Centers for Medicare & Medicaid Services, 2012
5. Irons TG, Moore KS: The importance of health insurance and the safety net in rural communities. *N C Med J* 76:50-3, 2015
6. Farkas DT, Greenbaum A, Singhal V, et al: Effect of insurance status on the stage of breast and colorectal cancers in a safety-net hospital. *J Oncol Pract* 8:16s-21s, 2012
7. Werner RM, Goldman LE, Dudley RA: Comparison of change in quality of care between safety-net and non-safety-net hospitals. *JAMA* 299:2180-7, 2008
8. McAlearney AS, Murray K, Sieck C, et al: The Challenge of Improving Breast Cancer Care Coordination in Safety-net Hospitals: Barriers, Facilitators, and Opportunities. *Med Care* 54:147-54, 2016
9. Figueroa JF, Joynt KE, Zhou X, et al: Safety-net Hospitals Face More Barriers Yet Use Fewer Strategies to Reduce Readmissions. *Med Care* 55:229-235, 2017
10. Andrulis DP, Siddiqui NJ: Health Reform Holds Both Risks And Rewards For Safety-Net Providers And Racially And Ethnically Diverse Patients. *Health Affairs* 30:1830-1836, 2011
11. Gaskin DJ, Hadley J: Population characteristics of markets of safety-net and non-safety-net hospitals. *J Urban Health* 76:351-70, 1999
12. Gilman M, Adams EK, Hockenberry JM, et al: Safety-Net Hospitals More Likely Than Other Hospitals To Fare Poorly Under Medicare's Value-Based Purchasing. *Health Affairs* 34:398-405, 2015
13. Joynt KE, Jha AK: Characteristics of Hospitals Receiving Penalties Under the Hospital Readmissions Reduction Program. *JAMA* 309:342-343, 2013
14. Commission on Cancer: About the Commission on Cancer, American College of Surgeons, 2019
15. Shulman LN, McCabe R, Gay G, et al: Building Data Infrastructure to Evaluate and Improve Quality: The National Cancer Data Base and the Commission on Cancer's Quality Improvement Programs. *J Oncol Pract* 11:209-12, 2015
16. American College of Surgeons: CoC Quality of Care Measures, American College of Surgeons, 2019
17. Lewin ME, Altman S: Americas's Health Care Safety Net: Intact but Endangered, Americas's Health Care Safety Net: Intact but Endangered. Washington (DC), Institute of Medicine (US) Committee on the Changing Market, Managed Care, and the Future Viability of Safety Net Providers, 2000
18. Hoehn RS, Wima K, Vestal MA, et al: Effect of Hospital Safety-Net Burden on Cost and Outcomes After Surgery. *JAMA Surg* 151:120-8, 2016
19. Centers for Medicare & Medicaid Services: Hospital-Acquired Condition Reduction Program: Hospital-Specific Report User Guide Fiscal Year 2020, 2019
20. Centers for Medicare & Medicaid Services: Hospital-Specific Report User Guide: Hospital Readmissions Reduction Program Fiscal Year 2020 2019
21. Centers for Medicare & Medicaid Services: Hospital Value-Based Purchasing (VBP) Program: Hospital-Specific Report User Guide for the Mortality and Complication Measures Fiscal Year 2020, 2019
22. Centers for Medicare & Medicaid Services Innovation Center: Oncology Care Model Overview, 2019
23. Sarkar R, Guss ZD, Lopez C, et al: Impact of hospital safety-net burden on oncology patterns of care and outcomes. *Journal of Clinical Oncology* 36:6567-6567, 2018
24. Wakeam E, Hevelone ND, Maine R, et al: Failure to rescue in safety-net hospitals: availability of hospital resources and differences in performance. *JAMA Surg* 149:229-35, 2014

## 23 – Quality of care at safety-net hospitals

25. Rhoads KF, Ackerson LK, Jha AK, et al: Quality of colon cancer outcomes in hospitals with a high percentage of Medicaid patients. *J Am Coll Surg* 207:197-204, 2008
26. Porten SP, Richardson DA, Odisho AY, et al: Disproportionate presentation of high risk prostate cancer in a safety net health system. *J Urol* 184:1931-6, 2010
27. Braveman P, Gottlieb L: The social determinants of health: it's time to consider the causes of the causes. *Public Health Rep* 129 Suppl 2:19-31, 2014
28. Daniel H, Bornstein SS, Kane GC, et al: Addressing Social Determinants to Improve Patient Care and Promote Health Equity: An American College of Physicians Position Paper. *Ann Intern Med* 168:577-578, 2018
29. Centers for Medicare and Medicaid Services: Oncology Care Model, 2019
30. Association of Northern California Oncologists: An Introduction to Innovent Oncology: A Service of US Oncology, 2019
31. Newcomer LN, Gould B, Page RD, et al: Changing Physician Incentives for Affordable, Quality Cancer Care: Results of an Episode Payment Model. *Journal of Oncology Practice* 10:322-326, 2014
32. Penne J: MD Anderson, UnitedHealthcare Launch New Cancer Care Payment Model, MD Anderson Cancer Center, 2014
33. Rubin R: How Value-Based Medicare Payments Exacerbate Health Care Disparities. *JAMA* 319:968-970, 2018
34. Chen LM, Epstein AM, Orav EJ, et al: Association of Practice-Level Social and Medical Risk With Performance in the Medicare Physician Value-Based Payment Modifier Program. *JAMA* 318:453-461, 2017
35. Frakt AB, Jha AK: Face the Facts: We Need to Change the Way We Do Pay for Performance. *Ann Intern Med* 168:291-292, 2018
36. Valuck T, Blaisdell D, Dugan D, et al: Improving Oncology Quality Measurement in Accountable Care, 2017
37. Damberg CL, Elliott MN, Ewing BA: Pay-for-performance schemes that use patient and provider categories would reduce payment disparities. *Health Aff (Millwood)* 34:134-42, 2015
38. Commission on Cancer: Cancer Program Standards: Ensuring Patient-Centered Care 2016 Edition, American College of Surgeons, 2016