

1 **Full title: Association Between Tuberculosis and Depression on Negative Outcomes of Tuberculosis**

2 **Treatment: A Systematic Review and Meta-Analysis**

3 **Short title: Depression on Negative Outcomes of Tuberculosis Treatment**

4 *Paulo Ruiz-Grosso^{1,2}, Rodrigo Cachay¹, Adriana de la Flor³, Alvaro Schwalb¹, Cesar Ugarte-Gil^{1,3,4*}*

5

6 ¹Instituto de Medicina Tropical Alexander von Humboldt, Universidad Peruana Cayetano Heredia, Lima, Peru.

7 ²School of Public Health, Universidad Peruana Cayetano Heredia, Lima, Peru. ³School of Medicine, Universidad

8 Peruana Cayetano Heredia, Lima, Peru. ⁴TB Centre, London School of Hygiene and Tropical Medicine, London,

9 UK.

10 *Correspondence: cesar.ugarte@upch.pe

11

12 **Abstract:**

13 **Background:** Depression is a common comorbidity of tuberculosis (TB) and is associated with poor adherence to
14 treatment of multiple disorders. We conducted a systematic review to synthesize the existing evidence on the
15 relationship between depression and negative outcomes of TB treatment.

16 **Methods:** We systematically reviewed studies that evaluated depressive symptoms (DS) directly or indirectly
17 through psychological distress (PD) and measured negative treatment outcomes of drug-sensitive pulmonary TB,
18 defined as death, loss to follow-up, or non-adherence. Sources included PubMed, Global Health Library, Embase,
19 Scopus and Web of Science from inception to August 2019.

20 **Results:** Of the 2,970 studies initially identified, eight articles were eligible for inclusion and two were used for the
21 primary outcome meta-analysis. We found a strong association between DS and negative TB treatment outcomes
22 (OR=4.26; CI95%:2.33-7.79; I²=0%). DS were also associated with loss to follow-up (OR=8.70; CI95%:6.50-11.64;
23 I²=0%) and death (OR=2.85; CI95%:1.52-5.36; I²=0%). Non-adherence was not associated with DS and PD
24 (OR=1.34; CI95%:0.70-2.72; I²=94.36) or PD alone (OR=0.92; CI95%:0.81-1.05; I²=0%).

25 **Conclusions:** DS are associated with the negative TB treatment outcomes of death and loss to follow-up.
26 Considerable heterogeneity exists in the definition of depression and outcomes such as non-adherence across the
27 limited number of studies on this topic.

28

29 **Introduction**

30 The high burden of tuberculosis (TB) on morbidity and mortality around the world constitutes a significant public
31 health concern, especially in low and middle-income countries [1–3]. The World Health Organization (WHO)
32 estimated that 10 million people developed active TB disease in 2017 [4]. Treatment is given through the Direct
33 Observation Therapy, Short-Course program (DOTS), and cure rates have been reported at 80% in 2012 and 82% in
34 2018 [4,5]. However, certain factors like poverty, poor access to health services, and mental illness, including
35 depression and substance abuse, have a negative effect on treatment adherence. Decreased compliance often leads to
36 treatment default, which not only increases the probability of medical complications such as developing MDR-TB or
37 death but also results in greater expenditure for the public healthcare system [6].

38
39 Mental illness is also an important global health concern, with depression affecting nearly 121 million people
40 worldwide [7]. The lifetime risk of suffering from depression among the general population is 7.2% in women and
41 4.3% in men [8]. Among patients with comorbidities, the prevalence of depression is even greater (25-33%)[1]. For
42 example, 26.8% of patients with hypertension and 8-18% of patients with diabetes mellitus also struggle with
43 depression [9,10].

44
45 Both tuberculosis and depression share common risk factors, which explain the high prevalence of their
46 comorbidity, reported to range from 10-52% [11–13]. Their interaction is complex since one disease might
47 contribute to the development of the other. On one hand, the increase of pro-inflammatory cytokines characteristic
48 of depression leads to decreased activation of the cellular and humoral immune systems, which contributes to the
49 development of TB [12]. On the other hand, TB infection causes chronic inflammation, releasing pro-inflammatory
50 cytokines that activate brain enzymes, such as indoleamine 2, 3-dioxygenase, that degrade tryptophan and thereby
51 limit serotonin production. Anti-tuberculosis medications may also play a role in psychiatric disease: isoniazid alters
52 serotonin uptake and high doses of ethambutol have been associated with depression [13].

53
54 Most studies on the comorbidity of TB and depression reveal a significant correlation between depression and poor
55 adherence to TB treatment, as well as higher rates of treatment failure, development of antimicrobial resistance, and
56 higher mortality rates [3,12,14]. The purpose of this systematic review is to synthesize all the available data on the

57 relationship between TB and depression and to define the impact that their association has on negative TB treatment
58 outcomes.

59

60 **Methods**

61 *Search strategy and selection criteria*

62 We performed a systematic review and meta-analysis that followed the recommendations in the PRISMA Statement
63 to report our findings. Ethical approval was obtained from the Institutional Ethics Committee of Universidad
64 Peruana Cayetano Heredia (SIDISI: 103321). The study protocol was included in the PROSPERO database
65 (CRD42018111058).

66

67 We searched the following electronic databases: PubMed, Global Health Library, Embase, Scopus and Web of
68 Science for English language articles published any time up to August 9, 2019; grey literature was not considered.

69 The search strategy included the terms: “Tuberculosis”, “Depression”, and “Depressive disorder”. Detailed search
70 strategies for PubMed are described in **Table 1**. Strategies for all other databases used are included in **Appendix A**.

71

72 **Table 1: Terms employed for search strategy in PubMed**

# 1	((tuberculosis[tiab] OR "Tuberculosis"[Mesh]) OR ("tuberculosis"[MeSH Terms] OR "tuberculosis"[All Fields]))
# 2	((("depressive disorder"[MeSH Terms] OR ("depressive"[All Fields] AND "disorder"[All Fields]) OR "depressive disorder"[All Fields] OR "depression"[All Fields] OR "depression"[MeSH Terms]) OR ("depression"[All Fields] OR "major depressive disorder"[All Fields] OR "major depressive episode"[All Fields]) OR ("Depression"[Mesh] OR "Depressive Disorder"[Mesh]))
# 3	1 AND 2 Humans

73

74 Cross-sectional, case-control, cohort and clinical trial studies with information on depression and negative TB
75 treatment outcomes were considered for review. For the primary analysis, negative outcomes included death and
76 loss to follow-up during TB treatment; for exploratory analysis, studies that provided information on non-adherence
77 were also included. The diagnosis of pulmonary tuberculosis, depression, and outcomes were defined as per each
78 study. Studies that included information exclusively on individuals under the age of 16, inpatients, non-pulmonary
79 TB, or drug-resistant TB were excluded. For the primary analysis, only studies that provided the number of
80 depressed and non-depressed individuals with and without negative treatment outcomes were included. For the
81 secondary analysis, all of the available studies were included.

82

83 *Outcome definitions*

84 The primary endpoint extracted was the number of depressed and non-depressed individuals with and without
85 treatment outcomes in order to assess the association between depression and negative outcomes (death and loss to
86 follow-up during the TB treatment). The secondary endpoints included all of the studies that provided at least an
87 effect size measure and confidence interval for the association between depression and negative TB treatment
88 outcomes; each outcome was also evaluated individually. The exploratory endpoints included non-adherence as an
89 outcome when assessing studies.

90

91 *Data extraction and quality assessment*

92 The titles and abstracts of all identified articles were sorted by the author's last name and were split into two halves.
93 Both halves were independently evaluated in duplicate by two investigators (The first half by RC and AD, and the
94 second half by AS and PRG) to determine if they met the inclusion criteria. A more inclusive approach was
95 employed during this phase in order to increase the sensitivity of article selection for the full-text analysis.

96

97 The manuscripts included for full-text analysis were sorted according to the author's last name and divided into two
98 halves. Both halves were independently evaluated in duplicate by two investigators, who then proceeded to identify
99 which articles met the inclusion criteria for the systematic review. Due to a high volume of articles that indirectly
100 classified depression concomitantly with anxiety using the Kessler Psychological Distress Scale (K-10), a decision
101 to include them in the systematic review was made. Disagreements were resolved by consensus or by a fifth
102 reviewer (CUG).

103

104 Two assessment tools were used to evaluate the quality of the papers included in our study. Both were independently
105 evaluated by two investigators (RC and AS) and disagreements were resolved by consensus or by a third reviewer
106 (PRG). The Newcastle-Ottawa Scale (NOS) was used for case-control and cohort studies and the National Institutes
107 of Health's (NIH) assessment tool for cross-sectional studies and controlled intervention studies [15,16].

108

109 *Data analysis*

110 We estimated summary ORs with 95% confidence intervals using the random effects approach with the *metaan*
111 command for Stata16. We assessed the heterogeneity of the effects by the Cochrane Q with a null hypothesis of no
112 heterogeneity and inconsistency I^2 test with scores of 0.5 to 1 being indicative of high heterogeneity.

113

114 **Results**

115 The database search conducted on August 9, 2019, found 2144 records after the removal of duplicates. All titles and
116 abstracts were screened and 2081 were excluded. **Figure 1** depicts the study selection process. 63 articles were
117 assessed through a full-text evaluation and only eight met the inclusion criteria for this systematic review: four
118 measured depression directly through the use of validated scales (CES-D, PHQ-9, ICD-10) and four measured
119 depression indirectly through the use of the K-10 scale for psychological distress. The total number of participants
120 from the eight included studies was 12313.

121

122 **Figure 1: Study selection**

123

124 All studies that measured depression among TB patients had a longitudinal design with the exception of *Yan et al.*
125 which was a cross-sectional study. Depression was measured using both a 5-item and full version of the CES-D
126 scale, the ICD-10 criteria, and the PHQ-9 scale. Three studies measured depression at baseline and at the end of the
127 intensive phase of TB treatment, two studies measured it at the end of treatment, one measured it at monthly
128 intervals, and one did not provide information regarding the measurement timing of depressive symptoms.
129 Outcomes were defined as per local guidelines, which reflected the definition of WHO recommendations for TB
130 treatment outcomes [17]. Specifically, loss to follow-up was defined as not taking medication for at least 30 days
131 without a recommendation from the treating physician. Only *Yan et al.* measured non-adherence using the Morisky
132 Medication Adherence Scale (MMAS-8)[18]. Analysis of TB treatment outcomes revealed a higher risk of negative
133 outcomes, lower success rate, and worse adherence to treatment among patients who presented DS. *Ugarte-Gil et al.*
134 reported an adjusted hazard ratio of 3.46 for treatment default or death in patients with symptoms suggestive of a
135 major depressive episode (MDE) at baseline visit. *Ambaw et al.* also found an increased risk for loss to follow-up
136 and death (RR=9.09 and 2.99, respectively) in persons with an MDE score suggestive of depression at baseline. *Yan*
137 *et al.* showed that in comparison with individuals with low depression scores, those with high scores had a greater

138 chance of poor medication adherence (OR=3.67). Finally, *Govender et al.* reported a statistically significant mean
 139 difference between adherent and non-adherent individuals (7.14 vs. 2.55, $p < 0.0001$). The characteristics and results
 140 of the studies can be found in **Table 2**.

141

142 **Table 2: Characteristics and summary of findings of articles measuring depressive symptoms.**

Author	Year	Country	Study design	Study population	Depression scale	TB diagnosis	Outcome measurements	Findings
<i>Govender et al.</i>	2009	South Africa	Prospective cohort	159	ICD-10 criteria	NS	Baseline and month 2	Higher depression score was associated with non-adherence to TB treatment within the intensive phase (Mean: 7.14; 95% CI 6.28-8.0 vs 2.55; 95% CI 1.88-3.22; $p < 0.01$). There is no significance in logistic regression analysis.
<i>Ugarte-Gil et al.</i>	2013	Peru	Prospective cohort	325	5-item CES-D (Cut-off score: > 6)	Sputum smear microscopy and/or culture	Baseline and monthly until treatment completion (Month 6)	MDEb presented more NO. Depression according to CES-D led to lower adherence to TB treatment. It also led to shorter survival time during sixth-month follow up (85% vs 96%) and 3.46 greater risk of TB treatment abandonment or death. Only MDEb and cocaine were significant risk factors for NO in the multivariate analysis.
<i>Ambaw et al.</i>	2018	Ethiopia	Prospective cohort	648	PHQ-9 (Cut-off score: > 10)	Sputum smear microscopy and/or culture	Baseline, month 2 and 6	Probable depression at baseline visit was associated with higher treatment default (3.9% vs 0.8%; $p < 0.05$) with significant adjusted risk ratio (aRR: 9.09; 95% CI: 6.72–12.30), as well as death (7.8% vs 1.9; $p < 0.01$; aRR: 2.99; 95% CI 1.54 – 5.78) and lower success rate (87.1% vs 96.6%; $p < 0.001$)
<i>Yan et al.</i>	2018	China	Cross-sectional	1342	CES-D (Cut-off score: > 24)	NS	NA	Severe depression had OR 3.67 greater risk of lower adherence. Mild depression had OR 1.92 greater risk of lower adherence.

143 PHQ-9: Patient Health Questionnaire. ICD-10: International Statistical Classification of Diseases and Related Health

144 Problems (10th revision). CES-D: Center for Epidemiological Studies – Depression Scale. NS: Not specified. NA:

145 Not applicable. MDEb: Major depressive episode at baseline visit. NO: Negative outcomes.

146

147 Four studies focused on psychological distress (PD) in patients undergoing TB treatment using the K-10 scale with

148 different cut-off scores as detailed in **Table 3**. *Theron et al.* and *Tola et al.* used a longitudinal design while *Peltzer*

149 *et al.* and *Naidoo et al.* a cross-sectional one. *Peltzer et al.* and *Naidoo et al.* measured PD in all TB patients that
 150 were starting treatment or re-treatment within one month of the start date. *Tola et al.* also measured PD at baseline,
 151 defined as two months from the start of TB treatment, and at the end of treatment. *Tola et al.* classified poor
 152 treatment outcomes as treatment failure, loss to follow-up, and death. *Peltzer et al.* and *Naidoo et al.* defined non-
 153 adherence as taking less than 90% of the medication in the last three to four weeks based on self-report, and *Theron*
 154 *et al.* considered non-adherence as missing one DOTS appointment. *Theron et al.* measured PD at baseline and at
 155 two and six months after baseline. *Tola et al.* reported an association between treatment outcome and PD in the sixth
 156 month after the start of treatment (adjusted OR=2.87). Neither *Peltzer et al.* nor *Naidoo et al.* found an association
 157 between PD and medication adherence (OR=0.92, CI95%:0.79-1.07; aOR=0.94, IC95%:0.73-1.22, respectively).
 158 *Theron et al.* reported that the K-10 score correlated with non-adherence (aOR=1.082, CI95%:1.033-1.137).
 159

160 **Table 3: Characteristics and summary of findings of articles measuring psychological distress.**

Author	Year	Country	Study design	Study population	Psychological distress scale	TB diagnosis	Outcome measurements	Findings
<i>Peltzer et al.</i>	2012	South Africa	Cross-sectional	4900	K-10 (Cut-off score: > 28)	NS	Within the first month of treatment	Non-adherence to TB medications was not associated with PD.
<i>Naidoo et al.</i>	2013	South Africa	Cross-sectional	3107	K-10 (Cut-off score: > 30)	NS	Within the first three weeks of treatment	Severe PD was more likely to be associated with TB treatment non-adherence on univariate analysis (OR:1.31 95%CI: 1.09 – 1.57, p < 0.01), but lost its significance on multivariate analysis.
<i>Theron et al.</i>	2015	South Africa, Zimbabwe, Zambia, Tanzania	Controlled intervention	1502	K-10	Culture (MGIT)	Baseline, month 2 and 6	The median K-10 score was found to be higher (27 vs. 21.5) among 26% non-adherent patients, being PD an independent factor for treatment non-adherence. K-10 score of >30 had RR 2.29-fold higher risk of non-adherence to treatment. Higher K-10 score (26.5 vs 24) at recruitment had a higher mortality rate

Author	Year	Country	Study design	Study population	Psychological distress scale	TB diagnosis	Outcome measurements	Findings
								initially but lost its significance in the multivariate model. For each point increased in K-10 score, the odds of non-adherence increased by 8%.
<i>Tola et al.</i>	2015	Ethiopia	Prospective cohort	330	K- 10 (Cut-off score: > 16)	NS	Baseline and month 6	PD at the sixth month of treatment were a significant predictor of TB treatment outcome, while these symptoms at the beginning of the treatment (within the first 2 months) were not.

161 K-10: Kessler Psychological Distress Scale. NS: Not specified. PD: Psychological Distress. TB: Tuberculosis.

162

163 For the primary analyses, the only two studies (n=973) that provided the raw number of TB patients exposed and not
 164 exposed to depression, with and without negative outcomes during TB treatment were included. We found a strong
 165 effect size (OR=4.26, CI95%: 2.33 - 7.79), with no evidence of heterogeneity (I²=0%). **Figure 2.**

166 **Figure 2. Effect of depression on negative outcomes during TB treatment.**

167

168 For the three articles included in the secondary meta-analysis, summary measurements were estimated using
 169 provided effect size measures and confidence intervals. Two of the studies directly measured depression and one PD
 170 (n=1303). We found a strong association between depression and negative TB treatment outcomes (OR=4.05;
 171 CI95%:2.34-6.89) and no evidence of heterogeneity (I²=0%). Exploratory meta-analysis showed that depression was
 172 associated with both death (Two articles, n=973, OR=2.85; CI95%:1.52-5.36) and loss to follow-up (Two articles,
 173 n=973, OR=8.70; CI95%:6.50-11.64) and, again, no evidence of heterogeneity was found (I²=0%). Exploratory
 174 meta-analysis showed no association between DS or PD and non-adherence (Three articles, n=9349, OR=1.34;
 175 CI95%:0.70-2.72) with high heterogeneity (I²=94.36). Finally, PD alone was not associated with non-adherence to
 176 TB treatment, and this lack of association was accompanied by low heterogeneity (Two articles, n=8007, OR=0.925;
 177 CI95%:0.81-1.05; I²=0). **Figure 3.**

178

179 **Figure 3. Secondary and exploratory meta-analyses.** DS: Depressive symptoms. PD: Psychological distress. TB:
180 Tuberculosis.

181
182 All studies underwent individual evaluation for their quality of evidence. The case-control and cohort studies were
183 assessed by the NOS; all four studies met the Agency for Healthcare Research and Quality (AHRQ) standards for
184 good quality evidence. The cross-sectional studies were also classified as good quality evidence by the NIH
185 assessment tools. The only controlled intervention study included was rated poorly by the NIH assessment tools due
186 to deficiencies in its description of the randomization and masking process, treatment allocation methodology, and
187 subgroup analysis.

188
189 For the primary analysis, Cochrane GRADE scores for negative outcomes were defined as being of low quality due
190 to the studies' observational designs. Given the overall small sample size, the quality of evidence was downgraded
191 on the basis of imprecision, but it was not affected by the risk of bias, inconsistency, or indirectness. Additionally, it
192 was upgraded on account of its large effect size. Publication bias could not be established due to the low number of
193 published manuscripts on the subject.

194
195 **Discussion**

196 This systematic review of the impact of depression on negative TB treatment outcomes suggests that depressive
197 symptoms are significantly associated with death and loss to follow-up during TB treatment (OR=4.26). Across the
198 eight studies included in the analysis, the combination of depressive symptoms and psychological distress also
199 significantly increases the odds of negative TB treatment outcomes (OR=4.05). Neither DS nor PD appear to be
200 associated with non-adherence during TB treatment (OR=1.34).

201
202 In order to properly interpret these results, several factors concerning the measurements of exposure, outcomes,
203 possible confounders must be addressed. First, in relation to the exposure, the main analysis included studies that
204 used both direct (DS) and indirect (PD) measurements of depression as predictors. Although depressive symptoms
205 and psychological distress are correlated, the scales used to measure DS (one short and full version of the CES-D,
206 ICD-10 and the PHQ-9) focused solely on depression, while the scale used to quantify PD (the K-10 scale)

207 measured not only depressive but also anxiety-related symptoms. A high PD score thus might have actually
208 represented mild depression with severe anxiety. This variation could explain why DS was more strongly associated
209 with negative TB treatment outcomes than PD alone or the combination of DS and PD [19,20].

210

211 Furthermore, within each measurement of exposure, different psychometric instruments and cut-off scores were
212 employed. In the case of studies that measured DS: *Ugarte-Gil et al.* used a brief 5-item version of the CES-D scale,
213 *Yan et al.* used the full 20-item version, and *Ambaw et al.* used the PHQ-9 scale. *Govender et al.* and *Theron et al.*
214 reported results using the exposure as a numeric variable alone. While *Ugarte-Gil et al.* and *Ambaw et al.* used a
215 validated cut-off score for DS compatible with MDE based on Diagnostic and Statistical Manual of Mental
216 Disorders IV (DSM-IV) criteria, the CES-D version used by *Yan et al.* was validated with the ICD-10 criteria for
217 mild, moderate and severe depressive disorder. Alternatively, all of the studies on PD utilized the same K-10 scale,
218 but each established different cut-off scores. *Naidoo et al.* (>30) and *Peltzer et al.* (>28) used higher cut-off scores
219 compared to *Tola et al.* (>15). Thus, when pooled together with *Ugarte-Gil et al.* and *Ambaw et al.*, the results of
220 *Tola et al.* might have diluted the effect of the meta-analysis by including milder forms of DS.

221

222 Second, in terms of outcomes, the quantification of death and loss to follow-up was uniform across most of the
223 studies reviewed, but there was heterogeneity in the definition and measurement of adherence. For death and loss to
224 follow-up, the majority of the studies synthesized were based on DOTS clinics and used definitions similar to those
225 found in the WHO guidelines for TB treatment.[17] Definitions of adherence were much less standard across the
226 studies, likely due to the fact that the current WHO guidelines do not specifically define non-adherence. For
227 instance, while *Yan et al.* used the MMAS-8 [21], with scores of eight or higher and lower than six suggesting high
228 and low adherence, respectively, *Peltzer et al.* and *Naidoo et al.* measured adherence by asking the participants to
229 estimate their percentage of treatment compliance in the previous three or four week interval, with less than 90%
230 classifying as non-adherence [18]. The latter found no association between PD and treatment adherence, while *Yan*
231 *et al.* found a strong association between DS and adherence. The lack of consistency in both the definitions of
232 exposure and outcome may contribute to these seemingly contradictory results. More specifically, *Peltzer et al.* and
233 *Naidoo et al.* may have failed to find a significant association because their criteria included individuals with lower
234 severity of non-adherence compared to *Yan et al.*

235

236 Third, regarding the evaluation of confounding factors, adjusted ORs were used when available for the analysis. If
237 data on adjusted results for the analysis of negative TB treatment outcomes was not available, as in the case of
238 *Ambaw et al.* and *Peltzer et al.*, individual adjusted ORs for death and loss to follow-up were used instead. Most
239 studies accounted for socio-demographic variables such as age, sex, and marital status as well as key variables
240 related to both negative outcomes and depression, such as alcohol intake. However, ORs adjusted for other possible
241 confounds such as baseline severity of depression, comorbidities, and socioeconomic status were not provided,
242 leaving prominent factors in the negative TB treatment outcomes unaccounted for.

243

244 Other possible limitations of this meta-analysis include its use of cross-sectional studies and an inability to pool all
245 adjusted ORs. A cross-sectional design is not optimal for establishing causality or providing an appropriate
246 timeframe to study the association between exposure and outcome. These caveats aside, our findings are consistent
247 with the literature on the role of depression on poor treatment outcomes of multiple disorders [22,23]. For example,
248 *Mayston et al.* found evidence suggesting that DS were related to poor adherence to HIV treatment, while *Bowser et*
249 *al.* uncovered a relationship between DS and missing appointments for diabetes mellitus [24,25]. However, the
250 causal relationship between DS and non-adherence, loss to follow-up, and death during TB treatment is likely to be
251 complex. Depressive disorders might impair key neurocognitive functions necessary for proper adherence, such as
252 the appreciation and reasoning components of decision making, memory, and executive function, especially when
253 melancholic symptoms are present. This impairment, in turn, could affect awareness and the disposition to receive
254 TB treatment. Given the evidence that such neurocognitive functions seem to improve with the remission of DS, the
255 need to detect DS during TB treatment is all the more important [26–29].

256

257 The reviewed literature suggests that DS could be a key line of research in the efforts to improve the outcomes of
258 TB treatment. However, in order to properly design and implement an intervention, more preliminary data must
259 identify the most suitable course of action. For example, in order to establish the appropriate period for a timely
260 intervention, we must first better understand how DS evolve during TB treatment and how their variation impacts
261 treatment outcomes. This work calls for the use of universal scales with preset cut-off points to measure depression
262 and facilitate further meta-analysis.

263

264 In addition, measuring the effect of potential mediating factors between DS and negative outcomes of TB treatment
265 might allow us to better identify the most vulnerable populations. For example, depression and substance use
266 disorders, which are themselves associated with both the development of TB and negative outcomes during
267 treatment, also have a high prevalence of comorbidity [30,31]. The pathologic use of drugs such as alcohol and
268 cocaine derivatives have been found to increase the severity of co-occurring depressive symptoms and are likely to
269 severely disrupt cognition, further contributing to poor treatment adherence [32]. Given the multifactorial
270 consequences of mental illness, there is no doubt that a holistic approach to patient care must be considered in order
271 to adequately treat tuberculosis.

272

273 **Conclusions**

274 The current evidence suggests that depressive symptoms are associated with negative outcomes during the treatment
275 of tuberculosis. We recommend that future research focus on the longitudinal association between depression and
276 TB outcomes, taking into account possible mediators and biological markers that might help to identify subgroups of
277 patients that could benefit from specific interventions, including the treatment of depressive symptoms. Patient
278 management during TB treatment should include depression screening to ensure the quality of care. We also urge
279 that an effort be made to report results for both categorical and continuous depressive measures in order to facilitate
280 more comprehensive meta-analyses.

281

282 **Author Contributions**

283 All authors contributed to the study design. CUG performed database searches and PRG, RC, AD and AS screened
284 and assessed eligibility criteria for study inclusion. PR did the statistical analysis. All authors contributed to the
285 discussion and interpretation of the results and to the writing of the manuscript. All authors have read and approved
286 the final manuscript.

287

288 **Acknowledgments**

289 We would like to thank Nicole Young for her help in reviewing this manuscript.

290

291 **Declaration of interests**

292 We declare no competing interests.

293

294 **Funding:**

295 PRG had support from FONDECYT/CIENCIACTIVA scholarship EF033-235-2015 and from the training grant

296 D43TW007393 awarded by the Fogarty International Center of the US National Institutes of Health. The authors

297 had full access to the study's data and were responsible for the decision to submit for publication.

298

299 **References:**

300 1. Duko B, Gebeyehu A, Ayano G. Prevalence and correlates of depression and anxiety among patients with
301 tuberculosis at WolaitaSodo University Hospital and Sodo Health Center, WolaitaSodo, South Ethiopia, Cross
302 sectional study. *BMC Psychiatry*. 2015;15: 214.

303 2. Pan S-W, Yen Y-F, Feng J-Y, Su VY-F, Kou YR, Su W-J. The Risk of Depressive Disorder Among Contacts
304 of Tuberculosis Patients in a TB-endemic Area: A Population-based Cohort Study. *Medicine*. 2015;94: e1870.

305 3. Ugarte-Gil C, Ruiz P, Zamudio C, Canaza L, Otero L, Kruger H, et al. Association of major depressive episode
306 with negative outcomes of tuberculosis treatment. *PLoS One*. 2013;8: e69514.

307 4. WHO. Global Tuberculosis Report 2018. In: World Health Organization [Internet]. 18 Sep 2018 [cited 4 Mar
308 2019]. Available: https://www.who.int/tb/publications/global_report/en/

309 5. WHO. Global Tuberculosis Report 2013. In: WHO [Internet]. 2013 [cited 7 Mar 2019]. Available:
310 https://apps.who.int/iris/bitstream/handle/10665/91355/9789241564656_eng.pdf?sequence=1&isAllowed=y

311 6. Munro SA, Lewin SA, Smith HJ, Engel ME, Fretheim A, Volmink J. Patient adherence to tuberculosis
312 treatment: a systematic review of qualitative research. *PLoS Med*. 2007;4: e238.

313 7. Hayes-Larson E, Hirsch-Moverman Y, Saito S, Frederix K, Pitt B, Maama-Maime L, et al. Depressive
314 symptoms and hazardous/harmful alcohol use are prevalent and correlate with stigma among TB-HIV patients
315 in Lesotho. *Int J Tuberc Lung Dis*. 2017;21: 34–41.

- 316 8. Picco L, Subramaniam M, Abdin E, Vaingankar JA, Chong SA. Gender differences in major depressive
317 disorder: findings from the Singapore Mental Health Study. *Singapore Med J*. 2017;58: 649–655.
- 318 9. Li Z, Li Y, Chen L, Chen P, Hu Y. Prevalence of Depression in Patients With Hypertension: A Systematic
319 Review and Meta-Analysis. *Medicine* . 2015;94: e1317.
- 320 10. Andreoulakis E, Hyphantis T, Kandylis D, Iacovides A. Depression in diabetes mellitus: a comprehensive
321 review. *Hippokratia*. 2012;16: 205–214.
- 322 11. Pachi A, Bratis D, Moussas G, Tselebis A. Psychiatric Morbidity and Other Factors Affecting Treatment
323 Adherence in Pulmonary Tuberculosis Patients. *Tuberc Res Treat*. 2013;2013. doi:10.1155/2013/489865
- 324 12. Ambaw F, Mayston R, Hanlon C, Alem A. Depression among patients with tuberculosis: determinants, course
325 and impact on pathways to care and treatment outcomes in a primary care setting in southern Ethiopia--a study
326 protocol. *BMJ Open*. 2015;5: e007653.
- 327 13. Yen Y-F, Chung M-S, Hu H-Y, Lai Y-J, Huang L-Y, Lin Y-S, et al. Association of pulmonary tuberculosis and
328 ethambutol with incident depressive disorder: a nationwide, population-based cohort study. *J Clin Psychiatry*.
329 2015;76: e505–11.
- 330 14. Berg J, Nyamathi A, Christiani A, Morisky D, Leake B. Predictors of screening results for depressive
331 symptoms among homeless adults in Los Angeles with latent tuberculosis. *Res Nurs Health*. 2005;28: 220–229.
- 332 15. The Newcastle-Ottawa Scale (NOS) for assessing the quality of nonrandomised studies in meta-analyses. In:
333 The Ottawa Hospital Research Institute [Internet]. [cited 20 Sep 2019]. Available:
334 http://www.ohri.ca/programs/clinical_epidemiology/oxford.asp
- 335 16. Study Quality Assessment Tools. In: NIH - National Heart, Lung, and Blood Institute [Internet]. [cited 20 Sep
336 2019]. Available: <https://www.nhlbi.nih.gov/health-topics/study-quality-assessment-tools>
- 337 17. WHO. Definitions and reporting framework for tuberculosis. In: WHO [Internet]. 2014 [cited 4 Mar 2019].
338 Available: <http://www.who.int/tb/publications/definitions/en/>
- 339 18. Morisky DE, Ang A, Krousel-Wood M, Ward HJ. Predictive validity of a medication adherence measure in an

- 340 outpatient setting. *J Clin Hypertens* . 2008;10: 348–354.
- 341 19. Brooks RT, Beard J, Steel Z. Factor structure and interpretation of the K10. *Psychol Assess*. 2006;18: 62–70.
- 342 20. Kessler RC, Barker PR, Colpe LJ, Epstein JF, Gfroerer JC, Hiripi E, et al. Screening for serious mental illness
343 in the general population. *Arch Gen Psychiatry*. 2003;60: 184–189.
- 344 21. Moon SJ, Lee W-Y, Hwang JS, Hong YP, Morisky DE. Accuracy of a screening tool for medication
345 adherence: A systematic review and meta-analysis of the Morisky Medication Adherence Scale-8. *PLoS One*.
346 2017;12: e0187139.
- 347 22. Grenard JL, Munjas BA, Adams JL, Suttorp M, Maglione M, McGlynn EA, et al. Depression and medication
348 adherence in the treatment of chronic diseases in the United States: a meta-analysis. *J Gen Intern Med*.
349 2011;26: 1175–1182.
- 350 23. DiMatteo MR, Lepper HS, Croghan TW. Depression is a risk factor for noncompliance with medical treatment:
351 meta-analysis of the effects of anxiety and depression on patient adherence. *Arch Intern Med*. 2000;160: 2101–
352 2107.
- 353 24. Mayston R, Kinyanda E, Chishinga N, Prince M, Patel V. Mental disorder and the outcome of HIV/AIDS in
354 low-income and middle-income countries: a systematic review. *AIDS*. 2012;26 Suppl 2: S117–35.
- 355 25. Bowser DM, Utz S, Glick D, Harmon R. A systematic review of the relationship of diabetes mellitus,
356 depression, and missed appointments in a low-income uninsured population. *Arch Psychiatr Nurs*. 2010;24:
357 317–329.
- 358 26. Wang Y-Y, Wang S-B, Ungvari GS, Yu X, Ng CH, Xiang Y-T. The assessment of decision-making
359 competence in patients with depression using the MacArthur competence assessment tools: A systematic
360 review. *Perspect Psychiatr Care*. 2018;54: 206–211.
- 361 27. Bosaipo NB, Foss MP, Young AH, Juruena MF. Neuropsychological changes in melancholic and atypical
362 depression: A systematic review. *Neurosci Biobehav Rev*. 2017;73: 309–325.
- 363 28. Ahern E, Semkowska M. Cognitive functioning in the first-episode of major depressive disorder: A systematic

- 364 review and meta-analysis. *Neuropsychology*. 2017;31: 52–72.
- 365 29. Rock PL, Roiser JP, Riedel WJ, Blackwell AD. Cognitive impairment in depression: a systematic review and
366 meta-analysis. *Psychol Med*. 2014;44: 2029–2040.
- 367 30. Duraisamy K, Mrithyunjayan S, Ghosh S, Nair SA, Balakrishnan S, Subramoniapillai J, et al. Does Alcohol
368 consumption during multidrug-resistant tuberculosis treatment affect outcome?. A population-based study in
369 Kerala, India. *Ann Am Thorac Soc*. 2014;11: 712–718.
- 370 31. Culqui DR, Munayco E CV, Grijalva CG, Cayla JA, Horna-Campos O, Alva Ch K, et al. Factors associated
371 with the non-completion of conventional anti-tuberculosis treatment in Peru. *Arch Bronconeumol*. 2012;48:
372 150–155.
- 373 32. Blanco C, Alegría AA, Liu S-M, Secades-Villa R, Sugaya L, Davies C, et al. Differences among major
374 depressive disorder with and without co-occurring substance use disorders and substance-induced depressive
375 disorder: results from the National Epidemiologic Survey on Alcohol and Related Conditions. *J Clin*
376 *Psychiatry*. 2012;73: 865–873.

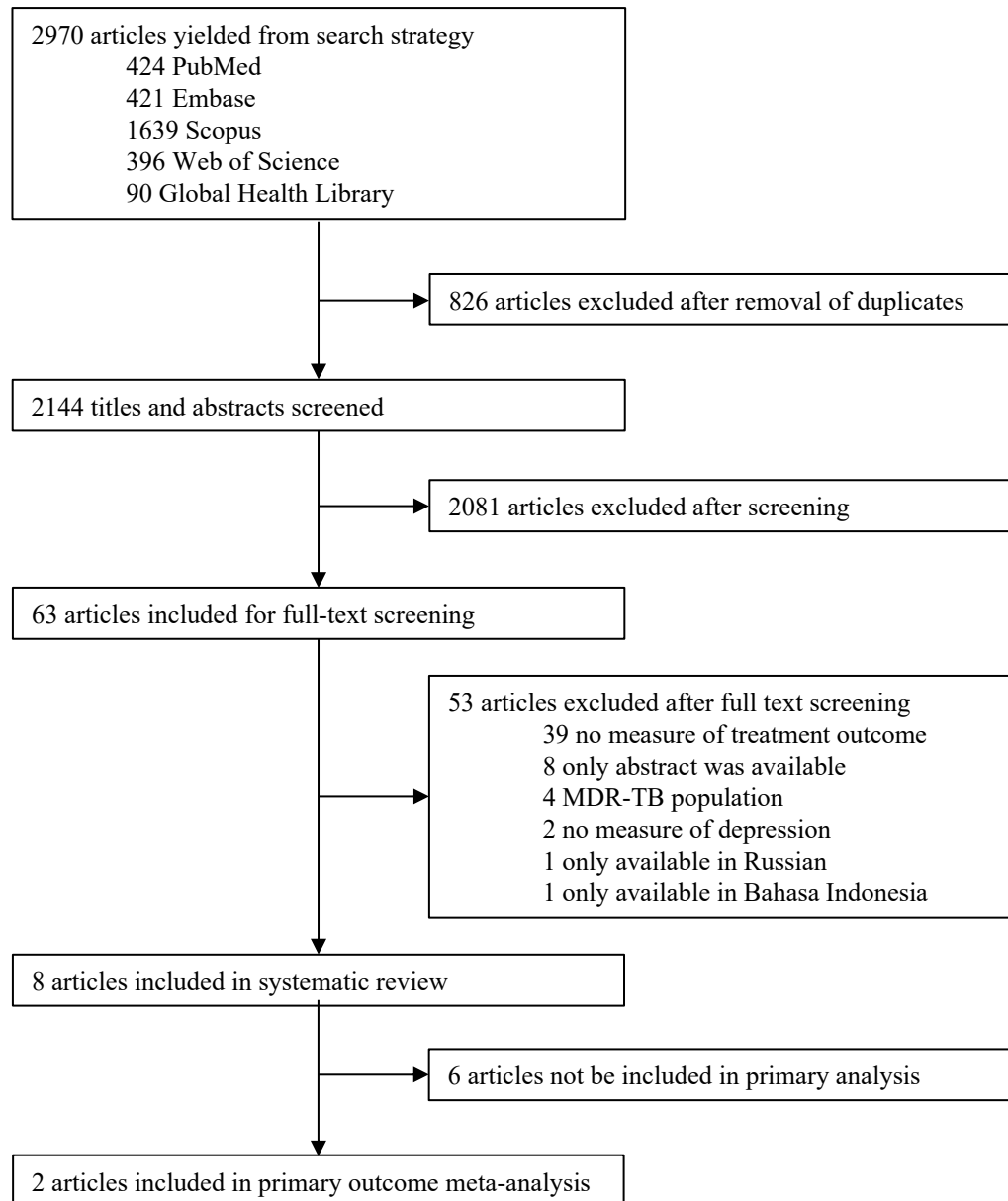
377

378 **Appendix:**

- 379 • A. Search strategies:
- 380 ○ EMBASE: 'tuberculosis':ti,ab,kw AND 'depression':ti,ab,kw AND [humans]/lim AND
381 ([embase]/lim OR [embase classic]/lim OR [pubmed-not-medline]/lim)
- 382 ○ Scopus: TITLE-ABS-KEY (tuberculosis AND depression)
- 383 ○ Web of Science: TS=(tuberculosis AND depression) OR TI=(tuberculosis AND depression)
- 384 ○ Global Health Library: tuberculosis AND depression

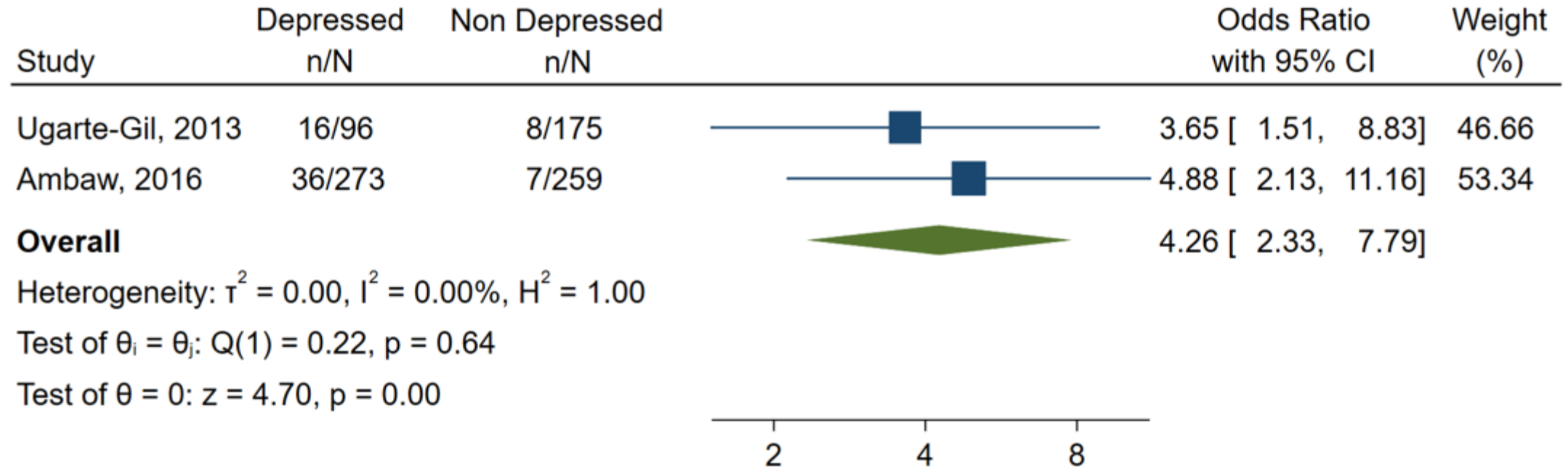
385

Figure 1: Study selection



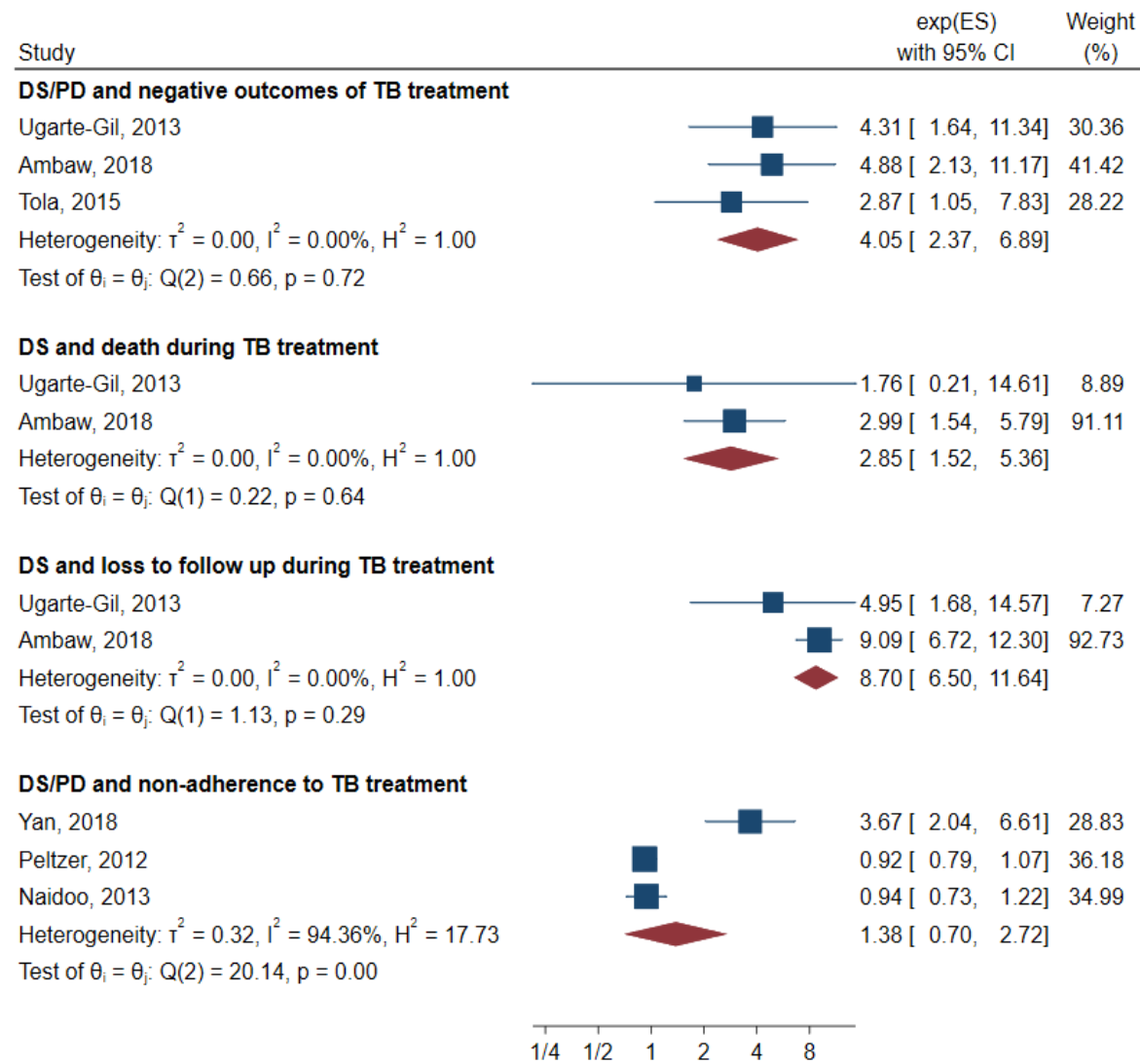
MDR-TB: Multidrug-resistant tuberculosis.

Figure 2. Effect of depression on negative outcomes during TB treatment.



Random-effects ML model

Figure 3. Secondary and exploratory meta-analyses



Random-effects ML model

DS: Depressive symptoms. PD: Psychological distress. TB: Tuberculosis.