

1 **Development of population and Bayesian models for applied use in patients receiving cefepime.**

2

3 Jiajun Liu<sup>1,2,3</sup>, Michael Neely<sup>4</sup>, Jeffrey Lipman<sup>5,6</sup>, Fekade Sime<sup>5,7</sup>, Jason Roberts<sup>5,6,7</sup>, Patrick J Kiel<sup>8</sup>, Sean N.  
4 Avedissian<sup>9,10</sup>, Nathaniel J. Rhodes<sup>1,2,3</sup>, Marc H. Scheetz<sup>1,2,3</sup>

5

6 <sup>1</sup>Midwestern University Chicago College of Pharmacy, Downers Grove, IL USA

7 <sup>2</sup>Northwestern Memorial Hospital, Chicago, IL USA

8 <sup>3</sup>Midwestern University Chicago College of Pharmacy Pharmacometrics Center of Excellence, Downers  
9 Grove, IL USA

10 <sup>4</sup>Children's Hospital Los Angeles and University of Southern California, Los Angeles, CA

11 <sup>5</sup>UQ Centre for Clinical Research, Faculty of Medicine, University of Queensland, Australia

12 <sup>6</sup>Royal Brisbane and Women's Hospital, Brisbane, Australia

13 <sup>7</sup>Centre for Translational Anti-infective Pharmacodynamics, School of Pharmacy, University of  
14 Queensland, Australia

15 <sup>8</sup>Indiana University Health, Indianapolis, IN, USA

16 <sup>9</sup>Antiviral Pharmacology Laboratory, University of Nebraska Medical Center (UNMC) Center for Drug  
17 Discovery, UNMC, Omaha, NE USA

18 <sup>10</sup>University of Nebraska Medical Center, College of Pharmacy, Omaha, NE USA

19

20 Corresponding Author:

21 Marc H. Scheetz, PharmD, MSc; Professor of Pharmacy Practice and Director of Pharmacometrics Center  
22 of Excellence; Midwestern University Chicago College of Pharmacy; 555 31<sup>st</sup> Street, Downers Grove, IL  
23 60515, Phone: 630-515-6116; Fax: 630-515-6958; Email: [mschee@midwestern.edu](mailto:mschee@midwestern.edu)

24

25 Financial disclosure: None

26 Keywords: cefepime, pharmacokinetic, pharmacodynamic, individualized dosing, precision dosing, model,  
27 population model

28

29 Acknowledgements: None

## Cefepime population pharmacokinetics

### 30 **Abstract**

31 Understanding exposures of cefepime, a  $\beta$ -lactam antibiotic, is crucial for developing regimens to achieve  
32 optimal exposure and improved clinical outcomes. This study sought to develop and evaluate a unified  
33 population pharmacokinetic model in both pediatric and adult patients receiving cefepime treatment.  
34 Multiple physiologically relevant models were fit to pediatric and adult subject data. To evaluate the final  
35 model performance, a withheld group of twelve pediatric and two separate adult populations were assessed.  
36 Seventy subjects with a total of 604 cefepime concentrations were included in this study. All adults (n=34)  
37 on average weighed 82.7 kg and displayed a mean creatinine clearance (CrCL) of 106.7 mL/min. All  
38 pediatric subjects (n=36) had mean weight and CrCL of 16.0 kg and 195.64 mL/min, respectively. A  
39 covariate-adjusted two compartment model described the observed concentrations well (population model  
40  $R^2$ , 87.0%; Bayesian model  $R^2$ , 96.5%). In the evaluation subsets, the model performed similarly well  
41 (population  $R^2$ , 84.0%; Bayesian  $R^2$ , 90.2%). The identified model serves well for population dosing and  
42 as a Bayesian prior for precision dosing.  
43

## Cefepime population pharmacokinetics

44 Key points:

- 45 • A unified cefepime population pharmacokinetic model has been developed from adult and
- 46 pediatric patients and evaluates well in independent populations.
- 47 • When paired with real time beta-lactam assays, precision dosing approach will optimize drug
- 48 exposure and improve clinical outcomes.

49 **1. Introduction**

50 Cefepime is a commonly utilized antibiotic for nosocomial infections. Rising resistance, manifesting as  
51 increased cefepime minimum inhibition concentrations (MICs), has led to more frequent clinical failures [1,  
52 2]. In order to advise clinical outcomes according to MIC, the Clinical and Laboratory Standards Institute  
53 (CLSI) updated the susceptibility breakpoints and then created a category of susceptible-dose dependent for  
54 MICs of 4 and 8 mg/L for *Enterobacteriaceae spp.* [3]. Achieving goal pharmacokinetic exposures to  
55 effectively treat these higher MICs can require a precision dosing approach.

56  
57 Cefepime, like other  $\beta$ -lactams, has pharmacodynamic activity governed by ‘time-dependent’ activity. The  
58 fraction of time that the unbound drug concentration exceeds the MIC ( $fT_{>MIC}$ ) for the dosing interval is the  
59 pharmacokinetic/pharmacodynamic (PK/PD) efficacy target for cefepime [4], and a target of 68%-74% has  
60 been established [5]. For the currently approved cefepime product and combination agents in the pipeline  
61 [6, 7], understanding cefepime disposition and variability is crucial to optimally treat the patients. Since  
62 inter- and intra-patient pharmacokinetic variability can impact the achievement of pharmacodynamic goals,  
63 understanding the precision of population dosing is important. Further, to fully realize precision dosing,  
64 individualized models (e.g. Bayesian models) are needed. Once developed, these models will form the  
65 basis for adaptive feedback and control strategies when paired with real time drug assays.

66  
67 The purpose of this study was to: 1) develop and evaluate a unified cefepime population PK model for  
68 adult and pediatric patients, and 2) construct an individualized model that can be utilized to deliver  
69 precision cefepime dosing.

70 **2. Material and methods**

71 *2.1 Study Populations*

72 Data from four clinical cefepime PK studies representing unique groups of patients were compiled.  
73 Subject demographics and study methodologies have been previously described [8-11]. In brief,  
74 populations represented were febrile neutropenic adults with hematologic malignancies [10, 11], those with  
75 critical illness [9] and children with presumed or documented bacterial infections [8]. For the two studies  
76 that evaluated adults with neutropenic fever, Sime et al. prospectively enrolled 12 patients receiving  
77 chemotherapy and/or stem cell transplant who subsequently developed febrile neutropenia and were  
78 administered maximum doses of cefepime [10]. A total of 53 cefepime plasma concentrations in  
79 presumably steady-state dosing intervals (third, sixth, and ninth) were analyzed for PK target attainment.  
80 Whited et al. prospectively studied similar patients (n=9) who were admitted to hematology-oncology  
81 services and were receiving cefepime at maximum dosage for febrile neutropenia [11]. Cefepime PK  
82 samples were obtained during steady state and analyzed for population parameters. Critically ill adults  
83 were studied by Roberts et al. as a prospective multinational PK study and included 14 patients who  
84 received cefepime [9]. Lastly, Reed et al. characterized cefepime PK in hospitalized pediatric patients  
85 (above 2 months of age) who received cefepime as monotherapy for bacterial infections [8]. For our study,  
86 only those who received intravenous cefepime were included for model development.

87

88 *2.2 Model Building Populations*

89 Adult (n=34) and partial pediatric (n=36) subjects were utilized for PK model building (Fig. 1) while model  
90 evaluation was performed with other datasets consisting of independent adult (n=25) and pediatric (n=12)  
91 patients. Pediatric patients from Reed et al. [8] were randomized into the model building or the evaluation  
92 dataset. All clinical patient level data included age, weight, and serum creatinine (SCr). An estimated  
93 creatinine clearance (CrCL) was calculated for each patient [12]. The Cockcroft Gault formula served as a  
94 standardized descriptor for elimination rate constant (Supplemental Fig. 1). This study was exempted by  
95 the Institutional Review Board at Northwestern University Chicago College of Pharmacy.

96

97 *2.3 Pharmacokinetic Models*

## Cefepime population pharmacokinetics

98 To construct the base PK models, the Nonparametric Adaptive Grid (NPAG) algorithm [13, 14] within the  
99 Pmetrics (Version 1.5.2) package [14] for R [15] was utilized. Multiple physiologically relevant one- and  
100 two compartmental PK models were built and assessed. The one-compartment structural model included  
101 an intravenous cefepime dose into and parameterized total cefepime elimination ( $K_e$ ) from the central  
102 compartment ( $V_C$ ). The two-compartment model included additional parameterizations of  
103 intercompartmental transfer constants between central and peripheral compartments ( $K_{CP}$  and  $K_{PC}$ ). In  
104 candidate models, total cefepime elimination was explored according to full renal and partial renal  
105 clearance (CL) models [i.e. non-renal elimination ( $K_{eIntcpt}$ ) and renal elimination descriptor ( $K_{e0}$   
106 vectorized as a function of glomerular filtration estimates)] [6, 16].

107

108 Assay error was included into the model using a polynomial equation in the form of standard deviation (SD)  
109 as a function of each observed concentration, Y (i.e.  $SD = C_0 + C_1 \cdot Y$ ). Observation weighting was  
110 performed using gamma (i.e.  $error = SD \cdot \text{gamma}$ ), a multiplicative variance model to account for extra  
111 process noise. Gamma was initially set at 4 with  $C_0$  and  $C_1$  equal to 0.5 and 0.15, respectively.

112

113 Covariate relationships were assessed using the 'PMStep' function in Pmetrics by applying stepwise linear  
114 regressions (forward selection and backwards elimination) of all covariates on PK parameters.

115 Additionally, *a priori* analyses examined the effect of covariates (e.g. weight, CrCL) on cefepime  
116 elimination rate constant ( $K_e$ ) because of their known importance in describing cefepime disposition [6, 17,  
117 18]. Weight and CrCL were standardized to 70 kilogram (kg) and 120 mL/min, respectively. Further, an  
118 allometric scaler was applied to standardized weight (i.e. (quotient of weight in kg divided by 70 kg raised  
119 to the 0.75<sup>th</sup> power) as a covariate adjustment to  $K_e$  (Supplemental Fig. 1). Ultimate model retention was  
120 governed according to criteria described below.

121

122 The best structural and error model was identified by the change in objective function value (OFV)  
123 calculated as differences in -2 log-likelihood (-2LL), with a reduction of 3.84 in OFV corresponding to  $p$   
124  $<0.05$  based on chi-square distribution and one degree of freedom. Further, the best-fit model was selected  
125 based on rule of parsimony and the lowest Akaike's information criterion (AIC) scores. Goodness-of-fit of

## Cefepime population pharmacokinetics

126 the competing models were evaluated by regression on observed vs. predicted plots, coefficients of  
127 determination, and visual predictive checks. Predictive performance was assessed using bias and  
128 imprecision in both population and individual prediction models. Bias was defined as mean weighted  
129 prediction error; imprecision was defined as bias-adjusted mean weighted squared prediction error.  
130 Posterior-predicted cefepime concentrations for each study subject was calculated using individual median  
131 Bayesian posterior parameter estimates. Using Bayesian posterior-predicted concentrations (at every 0.2 h)  
132 from the final model, noncompartmental analyses (NCA) were performed to estimate additional PK  
133 parameters [i.e. half-life, clearance (CL)].

134

### 135 *2.4 Model Evaluation*

136 To evaluate the final adjusted model, the NPAG algorithm [13, 14] was employed to assess the  
137 performance with separate data sets (Fig. 1). The population joint density from the final adjusted model  
138 were employed as Bayesian prior for the randomly withheld pediatric and adult data. In the evaluation  
139 process, structural model, model parameters, assay error, and observation weighting were unchanged.  
140 Goodness-of-fit of the competing models were determined as described above.

141

### 142 *2.5 Simulations and probability of target attainment (PTA)*

143 Simulation was performed to examine the exposures predicted by the final adjusted PK model [14, 19].  
144 Covariate values were fixed per subject based on arithmetic means of observed weight and CrCL for adult  
145 and pediatric in the model development populations. Monte Carlo sampling was performed from the  
146 multimodal, multivariate distribution of parameters with limits fixed by the bounded parameter space.  
147 Maximum dosing regimens were simulated for adult and pediatric populations: 2 grams every 8 hours (h)  
148 infused over 0.5 h and 50 mg/kg every 8 h infused over 0.5 h. Protein binding of 20% (i.e. 80% free  
149 fraction of total cefepime dose) was accounted for in predicting 48-h cefepime concentrations [6]. For each  
150 scenario, 2,000 parameter sets or patients were generated. PK/PD target of  $fT_{>MIC} \geq 68\%$  was utilized  
151 across doubling MICs of 0.25-32 mg/L over the first 48 h of cefepime therapy [5]. Estimates are provided  
152 from the first 24 h of simulations as timely administration of effective antimicrobial agents is associated  
153 with increased survival [20].

## Cefepime population pharmacokinetics

154

### 155 **3. Results**

#### 156 *3.1 Demographics*

157 A total of 70 clinically diverse subjects, contributing 683 cefepime concentrations, were included in this  
158 study (n=45 subjects for model development; n=25 subjects for evaluation). Adult subjects (n=34) had a  
159 mean weight [SD] of 82.7 kg [21.5] and mean CrCL [SD] of 106.7 mL/min [58.4]. For the pediatric cohort  
160 (n=36), means [SD] of weight and CrCL were 16.0 kg [16.1] and 195.64 mL/min [40.5], respectively.  
161 Adult subjects ranged in age from 22-82 years (mean, 55.4 years) while pediatric subjects ranged from  
162 approximately 2 months to 16 years of age (mean, 3.9 years).

163

#### 164 *3.2 PK model selection, parameters, and evaluation*

165 A total of 604 cefepime observations were available for analysis. Cefepime concentrations ranged from  
166 0.5-249.7 µg/mL. The base one- and two-compartment models (no covariate adjustment) produced  
167 reasonable fits for observed and Bayesian posterior-predicted cefepime concentrations ( $R^2=84.7\%$  and  
168  $85.2\%$ , respectively), but population estimates were unsatisfactory ( $R^2=22.7\%$  and  $27.8\%$ , respectively)  
169 (Table 1). After standardizing weight (to 70 kg) without an allometric scaler in the base two-compartment  
170 model, fits for both population and Bayesian posterior estimates against the observed data improved  
171 ( $R^2=60.7\%$  and  $96.5\%$ , respectively; OFV change, 4). Bias and imprecision for Bayesian posterior fits  
172 were -0.18 and 1.12, respectively. When covariates (i.e. weight to volume of distribution and  $K_e$ ; CrCL to  
173  $K_e$ ) and the allometric scaler were applied in the two-compartment model, Bayesian posteriors fit well  
174 ( $R^2=96.5\%$ ; Fig. 2 right) with low bias and imprecision (-0.15 and 1.07, respectively), and population PK  
175 model produced good fits of the observed cefepime concentrations ( $R^2=87.0\%$ , bias=0.53,  
176 imprecision=7.75; Fig. 2 left). The OFV change from the weight-adjusted, two-compartment model to  
177 final model was significant at -34 ( $p<0.05$ ) (Table 1). Thus, a two-compartment model with weight and  
178 CrCL as covariate adjustment and allometric scaling was selected as the final PK model. The population  
179 parameter values from the final PK model are summarized in Table 2. Structural model and differential  
180 equations that define the population PK are listed in Supplemental Materials. The population parameter



## Cefepime population pharmacokinetics

181 value covariance matrix can be found in Table 3. For the evaluation subset, Bayesian priors resulted in  
182 reasonably accurate and precise predictions (population  $R^2=84.0\%$ , Bayesian  $R^2=90.2\%$ ; Fig. 3).

183

### 184 *3.3 Simulation and PTA*

185 Results of PTA analysis are shown in Table 4 and Figure 4 for the first 24 h of therapy. Two cefepime  
186 regimens were utilized to simulate PTA for adult and pediatric subjects. Cefepime dosage of 2 grams every  
187 8 h infused over 30 minutes produced PTAs of >90% for MICs of 0.25-2 mg/L while a more than 2-fold  
188 drop of PTA was observed from MIC of 4 mg/L to 8 mg/L. The second cefepime regimen of 800 mg every  
189 8 h infused over 30 minutes achieved PTA of >90% only at an MIC of 0.25 mg/L, PTA at 81.1% at MIC of  
190 0.5 mg/L and performs poorly across subsequent higher doubling MICs.

191 **4. Discussion**

192 This study created a population and individual PK model for adult and pediatric patients and can serve as a  
193 Bayesian prior for precision dosing. When paired with a real time assay for cefepime, this model will  
194 allow for precise and accurate predictions of cefepime disposition via adaptive feedback control. In the  
195 absence of real time assays, these cefepime PK parameters facilitate more accurate population-based dosing  
196 strategies. Previous work by Rhodes et al. has shown an absolute difference of approximately 20% in  
197 survival probability across the continuum of achieving 0-100%  $fT_{>MIC}$  in adult patients with Gram-negative  
198 bloodstream infections, thus understanding the dose and re-dosing interval necessary to achieve optimal PK  
199 exposures should greatly improve clinical outcomes for patients treated with cefepime [5].

200

201 Individualized dosing and therapeutic drug monitoring (TDM) of  $\beta$ -lactam antibiotics (e.g. cefepime) are  
202 critically important to achieving optimal drug exposure (i.e. optimal  $fT_{>MIC}$  as the PK/PD target) and  
203 improving clinical outcomes [4, 21, 22]. Precision medicine has been named as a major focus for the  
204 National Health Institute with \$215 million invested [23], yet precision medicine has mostly focused on  
205 genomic differences [24, 25]. Precision dosing is an important facet of precision medicine, and renewed  
206 efforts in precision dosing in the real-world setting are being pursued [26]. Cefepime is a highly relevant  
207 example. While rigorous reviews and analyses are conducted during the development phase of an  
208 antibiotic, dose optimization is far less ideal for the types of patients who ultimately receive the drug. This  
209 is highlighted by the fact that although cefepime-associated neurotoxicity is rare. This serious and  
210 potentially life-threatening adverse event has been increasingly reported, yet few strategies exist for  
211 optimizing and delivering precision exposures [27, 28]. Lamoth et al. conducted a study to investigate the  
212 PK/PD threshold for cefepime-associated neurotoxicity [29]. Their final model predicted that a cefepime  
213 trough concentration of  $\geq 22$  mg/L ( $p=0.05$ ) has a 50% probability of predicating neurotoxicity. In contrast,  
214 Rhodes et al. performed simulations from literature data and found that such threshold by Lamoth et al. is  
215 suboptimal as a predictive trough cutpoint [30]. Moreover, high intercorrelation amongst all PK  
216 parameters (i.e.  $AUC_{SS}$ ,  $C_{MAX}$ , and  $C_{MIN}$ ) was observed by Rhodes et al., suggesting more work is needed to  
217 establish PK/TD profile for cefepime. Similarly, Huwyler et al. found a different trough ( $\geq 35$  mg/L) as the  
218 predictive cefepime neurotoxic threshold, contrasting that of Lamoth et al. [31]. In addition to

## Cefepime population pharmacokinetics

219 complications by these less-than-ideal PK/TD data, clinicians are left to treat patients with extreme age  
220 differences, organ dysfunction, and comorbid conditions affect antibiotic PK/PD [22]. These ‘real-world’  
221 patients are often under-represented, and thus not well understood, from a PK/PD and PK/TD standpoint  
222 during the drug approval process. Bridging to the more typical patients that are clinically treated is  
223 important and central to the mission of Precision Medicine. Findings of this study can be used to guide  
224 cefepime dosing in these ‘real-world’ patients.

225

226 Several other studies have reviewed population cefepime PK. Sime et al. observed that patients with  
227 neutropenic fever had a mean clearance (CL) of 8.6 L/h, mean elimination half-life of 2.7 h [10]. Nicasio  
228 et al. studied 32 critically ill patients receiving intravenous cefepime for ventilator-associated pneumonia  
229 and observed that means of total CL and elimination half-life (as calculated from mean total CL and mean  
230 volume of distribution) were 7.6 L/h and 2.0 h, respectively [32]. The NCA conducted (in model  
231 development adult population) in our study produced similar results (CL, 7.59 L/h; elimination half-life,  
232 2.98 h). Shoji et al. studied 91 pediatric patients and observed a mean of CL of approximately 1.86 L/h and  
233 a mean elimination half-life of 3.5 h (23). In our pediatric population, means of CL and elimination half-  
234 life were 3.1 L/h and 3.0 h, respectively. Our simulation findings are similar to those of Shoji et al. that a  
235 maximum pediatric cefepime dosing of 50 mg/kg every 8 h or 12 h did not adequately achieve optimal  
236 exposure to target higher MICs. Other studies also performed simulation for PTA with different cefepime  
237 regimens and renal functions, Tam et al. found that with a PD target of 67%, 2 grams every 8 h (30-minute  
238 infusion) achieved approximately 90% PTA for MIC of 8 mg/L in patients with CrCL of 120 mL/min while  
239 2 grams every 12 h achieved barely above 80% PTA for MIC of 4 mg/L in the same population [33].

240 Nicasio et al. also conducted a simulation using a PD target of 50% in the critically ill with varying renal  
241 function. Maximum recommended dosage (2 grams every 8 h) in patients with CrCL between 50-120  
242 mL/min achieved a PTA of 78.1% at MIC=16 mg/L; however, when the same regimen was infused over  
243 0.5 h, the PTA achieved was significantly lower [32]. Collectively, these findings suggest that cefepime  
244 exposure is highly variable and may be clinically suboptimal in a large number of patients commonly  
245 treated with cefepime. These findings support the need of precision dosing and TDM for  $\beta$ -lactam  
246 antibiotics to reach optimal PK/PD target given the high variability in drug exposures.

## Cefepime population pharmacokinetics

247

248 Our study is not without limitations. Although a relatively large and diverse cohort was included in model  
249 development and evaluation, we did not specifically assess certain subgroups such as patients with  
250 morbidly obesity, severe renal dysfunction, etc. These conditions may require patient-specific models.  
251 Secondly, many studies to date included “real-world” patients with various disease states (e.g. neutropenic  
252 fever, renal failure, sepsis, etc.); however, all studies were conducted under research protocol where doses,  
253 administration times, etc. were all carefully confirmed. Additional efforts will be needed to evaluate  
254 performance in clinical contexts.

255 **5. Conclusions**

256 A unified population model for cefepime in adults and pediatric populations was developed and  
257 demonstrated excellent performance on evaluation. Current cefepime dosages are often suboptimal, and  
258 population variability is high. Precision dosing approaches and real time assays are needed for cefepime to  
259 optimize drug exposure and improve clinical outcomes.

## Cefepime population pharmacokinetics

### 260 References

- 261 1. Bhat SV, Peleg AY, Lodise TP, Jr., Shutt KA, Capitano B, Potoski BA, et al. Failure of  
262 current cefepime breakpoints to predict clinical outcomes of bacteremia caused by gram-  
263 negative organisms. *Antimicrob Agents Chemother*. 2007 Dec;51(12):4390-5.
- 264 2. Rhodes NJ, Liu J, McLaughlin MM, Qi C, Scheetz MH. Evaluation of clinical outcomes in  
265 patients with Gram-negative bloodstream infections according to cefepime MIC. *Diagn*  
266 *Microbiol Infect Dis*. 2015 Jun;82(2):165-71.
- 267 3. CLSI. Performance Standards for Antimicrobial Susceptibility Testing. 26th ed. CLSI  
268 supplement M100. Wayne, PA: Clinical and Laboratory Standards Institute; 2016.
- 269 4. Craig WA. Pharmacokinetic/pharmacodynamic parameters: rationale for antibacterial  
270 dosing of mice and men. *Clin Infect Dis*. 1998 Jan;26(1):1-10; quiz 1-2.
- 271 5. Rhodes NJ, Kuti JL, Nicolau DP, Van Wart S, Nicasio AM, Liu J, et al. Defining Clinical  
272 Exposures of Cefepime for Gram-Negative Bloodstream Infections That Are Associated with  
273 Improved Survival. *Antimicrob Agents Chemother*. 2015 Dec 14;60(3):1401-10.
- 274 6. Hospira, Inc. Maxipine (cefepime hydrochloride) [package insert]. U.S. Food and Drug  
275 Administration website.  
276 [https://www.accessdata.fda.gov/drugsatfda\\_docs/label/2012/050679s036lbl.pdf](https://www.accessdata.fda.gov/drugsatfda_docs/label/2012/050679s036lbl.pdf). Revised June  
277 2012. Accessed August 16, 2019.
- 278 7. Daigle D, Hamrick J, Chatwin C, Kurepina N, Kreiswirth BN, Shields RK, et al. 1370.  
279 Cefepime/VNRX-5133 Broad-Spectrum Activity Is Maintained Against Emerging KPC- and PDC-  
280 Variants in Multidrug-Resistant *K. pneumoniae* and *P. aeruginosa*. *Open Forum Infect Dis*. 2018  
281 Nov;5(Suppl 1):S419-20.
- 282 8. Reed MD, Yamashita TS, Knupp CK, Veazey JM, Jr., Blumer JL. Pharmacokinetics of  
283 intravenously and intramuscularly administered cefepime in infants and children. *Antimicrob*  
284 *Agents Chemother*. 1997 Aug;41(8):1783-7.
- 285 9. Roberts JA, Paul SK, Akova M, Bassetti M, De Waele JJ, Dimopoulos G, et al. DALI:  
286 defining antibiotic levels in intensive care unit patients: are current beta-lactam antibiotic doses  
287 sufficient for critically ill patients? *Clin Infect Dis*. 2014 Apr;58(8):1072-83.
- 288 10. Sime FB, Roberts MS, Tiong IS, Gardner JH, Lehman S, Peake SL, et al. Adequacy of high-  
289 dose cefepime regimen in febrile neutropenic patients with hematological malignancies.  
290 *Antimicrob Agents Chemother*. 2015 Sep;59(9):5463-9.
- 291 11. Whited L, Grove M, Rose D, Rhodes NJ, Scheetz MH, O'Donnell JN, et al.  
292 Pharmacokinetics of Cefepime in Patients with Cancer and Febrile Neutropenia in the Setting of  
293 Hematologic Malignancies or Hematopoietic Cell Transplantation. *Pharmacotherapy*. 2016  
294 Sep;36(9):1003-10.
- 295 12. Cockcroft DW, Gault MH. Prediction of creatinine clearance from serum creatinine.  
296 *Nephron*. 1976;16(1):31-41.
- 297 13. Leary RJ, Roger & Schumitzky, Alan & Van Guilder, M. . An adaptive grid non-parametric  
298 approach to pharmacokinetic and dynamic (PK/PD) population models. *Proceedings of the IEEE*  
299 *Symposium on Computer-Based Medical Systems*. February, 2001:389-94.
- 300 14. Neely MN, van Guilder MG, Yamada WM, Schumitzky A, Jelliffe RW. Accurate detection  
301 of outliers and subpopulations with Pmetrics, a nonparametric and parametric pharmacometric  
302 modeling and simulation package for R. *Ther Drug Monit*. 2012 Aug;34(4):467-76.
- 303 15. R Core Team (2019). R: A language and environment for statistical computing. R  
304 Foundation for Statistical Computing, Vienna, Austria. URL <https://www.R-project.org/>.
- 305 16. Okamoto MP, Nakahiro RK, Chin A, Bedikian A. Cefepime clinical pharmacokinetics. *Clin*  
306 *Pharmacokinet*. 1993 Aug;25(2):88-102.

## Cefepime population pharmacokinetics

- 307 17. Kovarik JM, ter Maaten JC, Rademaker CM, Deenstra M, Hoepelman IM, Hart HC, et al.  
308 Pharmacokinetics of cefepime in patients with respiratory tract infections. *Antimicrob Agents*  
309 *Chemother.* 1990 Oct;34(10):1885-8.
- 310 18. Georges B, Conil JM, Seguin T, Dieye E, Cougot P, Decun JF, et al. Cefepime in intensive  
311 care unit patients: validation of a population pharmacokinetic approach and influence of  
312 covariables. *Int J Clin Pharmacol Ther.* 2008 Apr;46(4):157-64.
- 313 19. Goutelle S, Bourguignon L, Maire PH, Van Guilder M, Conte JE, Jr., Jelliffe RW.  
314 Population modeling and Monte Carlo simulation study of the pharmacokinetics and  
315 antituberculosis pharmacodynamics of rifampin in lungs. *Antimicrob Agents Chemother.* 2009  
316 Jul;53(7):2974-81.
- 317 20. Kumar A, Roberts D, Wood KE, Light B, Parrillo JE, Sharma S, et al. Duration of  
318 hypotension before initiation of effective antimicrobial therapy is the critical determinant of  
319 survival in human septic shock. *Crit Care Med.* 2006 Jun;34(6):1589-96.
- 320 21. Ambrose PG, Bhavnani SM, Rubino CM, Louie A, Gumbo T, Forrest A, et al.  
321 Pharmacokinetics-pharmacodynamics of antimicrobial therapy: it's not just for mice anymore.  
322 *Clin Infect Dis.* 2007 Jan 1;44(1):79-86.
- 323 22. Huttner A, Harbarth S, Hope WW, Lipman J, Roberts JA. Therapeutic drug monitoring of  
324 the beta-lactam antibiotics: what is the evidence and which patients should we be using it for? *J*  
325 *Antimicrob Chemother.* 2015 Dec;70(12):3178-83.
- 326 23. United States, Office of the Press Secretary. "FACT SHEET: President Obama's Precision  
327 Medicine Initiative". January 30, 2015, [obamawhitehouse.archives.gov/the-press-](http://obamawhitehouse.archives.gov/the-press-office/2015/01/30/fact-sheet-president-obama-s-precision-medicine-initiative)  
328 [office/2015/01/30/fact-sheet-president-obama-s-precision-medicine-initiative](http://obamawhitehouse.archives.gov/the-press-office/2015/01/30/fact-sheet-president-obama-s-precision-medicine-initiative). The White  
329 House. 2015.
- 330 24. Ginsburg GS, Phillips KA. Precision Medicine: From Science To Value. *Health Aff*  
331 *(Millwood).* 2018 May;37(5):694-701.
- 332 25. Gameiro GR, Sinkunas V, Liguori GR, Auler-Junior JOC. Precision Medicine: Changing the  
333 way we think about healthcare. *Clinics (Sao Paulo).* 2018 Dec 3;73:e723.
- 334 26. Precision Dosing: Defining the Need and Approaches to Deliver Individualized Drug  
335 Dosing in the Real-World Setting. Food and Drug Administration White Oak Campus. U.S. Food  
336 and Drug Administration. 2019; 2019.
- 337 27. FDA Drug Safety Communication: Cefepime and risk of seizure in patients not receiving  
338 dosage adjustments for kidney impairment. Food and Drug Administration. 2016.
- 339 28. Appa AA, Jain R, Rakita RM, Hakimian S, Pottinger PS. Characterizing Cefepime  
340 Neurotoxicity: A Systematic Review. *Open Forum Infect Dis.* 2017 Fall;4(4):ofx170.
- 341 29. Lamoth F, Buclin T, Pascual A, Vora S, Bolay S, Decosterd LA, et al. High cefepime plasma  
342 concentrations and neurological toxicity in febrile neutropenic patients with mild impairment of  
343 renal function. *Antimicrob Agents Chemother.* 2010 Oct;54(10):4360-7.
- 344 30. Rhodes NJ, Kuti JL, Nicolau DP, Neely MN, Nicasio AM, Scheetz MH. An exploratory  
345 analysis of the ability of a cefepime trough concentration greater than 22 mg/L to predict  
346 neurotoxicity. *J Infect Chemother.* 2016 Feb;22(2):78-83.
- 347 31. Huwyler T, Lenggenhager L, Abbas M, Ing Lorenzini K, Hughes S, Huttner B, et al.  
348 Cefepime plasma concentrations and clinical toxicity: a retrospective cohort study. *Clin*  
349 *Microbiol Infect.* 2017 Jul;23(7):454-9.
- 350 32. Nicasio AM, Ariano RE, Zelenitsky SA, Kim A, Crandon JL, Kuti JL, et al. Population  
351 pharmacokinetics of high-dose, prolonged-infusion cefepime in adult critically ill patients with  
352 ventilator-associated pneumonia. *Antimicrob Agents Chemother.* 2009 Apr;53(4):1476-81.

## Cefepime population pharmacokinetics

- 353 33. Tam VH, McKinnon PS, Akins RL, Drusano GL, Rybak MJ. Pharmacokinetics and  
354 pharmacodynamics of cefepime in patients with various degrees of renal function. Antimicrob  
355 Agents Chemother. 2003 Jun;47(6):1853-61.



**Table 1. Population Pharmacokinetic Model Builds and Comparisons**

Models	-2LL	AIC	Change in OFV	Population			Bayesian		
				Bias	Imprecision	R <sup>2</sup>	Bias	Imprecision	R <sup>2</sup>
<b>Base one</b>	3223	3229	-	0.82	21.3	0.23	-0.05	1.66	0.847
<b>Base two</b>	2994	3004	239	1.91	41.9	0.28	0.70	3.87	0.852
<b>Two *</b>	2990	3000	4	2.17	68.4	0.61	-0.18	1.12	0.965
<b>Two **</b>	2966	2978	34	0.53	7.75	0.87	-0.15	1.07	0.965

\*weight adjusted

\*\*weight adjusted and allometric scaler applied

**Table 2. Population PK Parameter Estimates from the Final Model**

	Median	SD	CV%	Shrinkage%
V <sub>0</sub> (L)	11.17	2.52	22.66	14.7
K <sub>e</sub> Intcpt (h <sup>-1</sup> )	0.506	0.29	59.24	15.1
K <sub>e</sub> 0 (h <sup>-1</sup> )	0.236	0.71	133.95	6.8
K <sub>CP</sub> (h <sup>-1</sup> )	1.716	1.53	68.82	7.7
K <sub>PC</sub> (h <sup>-1</sup> )	1.502	1.19	60.63	8.8

**Table 3. Population Parameter Value Covariance Matrix for the Final Model**

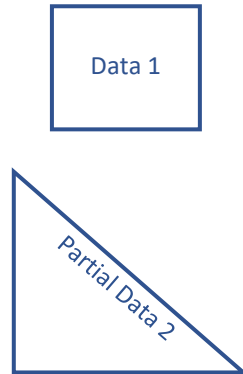
	$V_0$	$K_eIntcpt$	$K_e0$	$K_{CP}$	$K_{PC}$
$V_0$	6.366	-	-	-	-
$K_eIntcpt$	-0.106	0.085	-	-	-
$K_e0$	-0.238	-0.152	0.499	-	-
$K_{CP}$	-1.576	0.005	0.145	2.354	-
$K_{PC}$	-0.680	0.027	-0.188	1.441	1.414

**Table 4. Probability of Target Attainment at Different Cefepime MICs (Maximum Recommended Dosages for Adults and Pediatrics) for the First 24 Hours of Therapy**

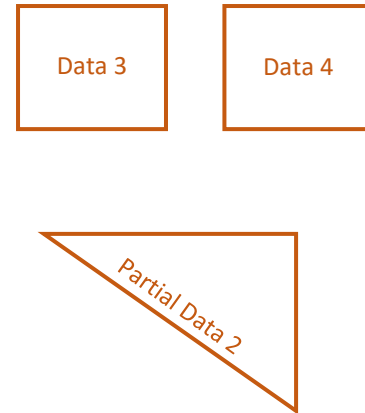
Cefepime regimen			Cefepime MICs (mg/L)							
Dose (mg)	Dosing interval (hr)	Infusion time (hr)	0.25	0.5	1	2	4	8	16	32
2000	8	0.5	100%	99.5%	97.6%	94.3%	78.5%	36.6%	5.5%	0.3%
800	8	0.5	93.6	81.1%	75.2%	58.8%	33.1%	11.4%	1.7%	0.3%

**Figure 1. Schematic for Data Sources in Model Development and Evaluation**

**Model Development**



**Model Evaluation**



Model development:

Data 1, n = 9 [1]

Data 2 partial, n = 24 [2]

Model Evaluation:

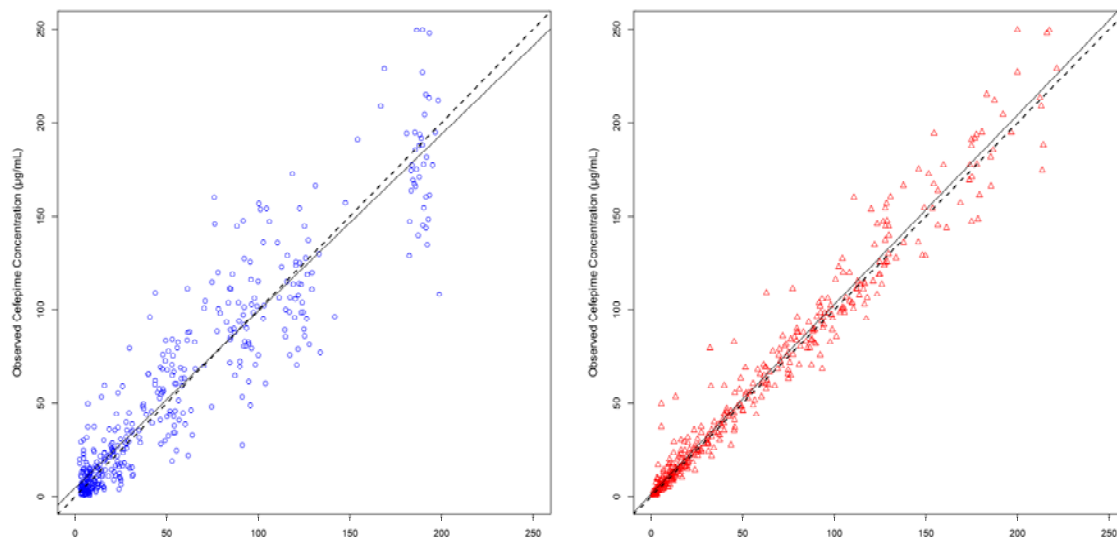
Data 3, n = 12 [3]

Data 4, n = 13 [4]

Data 2 partial, n = 12 [2]

1. Whited L, Grove M, Rose D, Rhodes NJ, Scheetz MH, O'Donnell JN, et al. Pharmacokinetics of Cefepime in Patients with Cancer and Febrile Neutropenia in the Setting of Hematologic Malignancies or Hematopoietic Cell Transplantation. *Pharmacotherapy*. 2016 Sep;36(9):1003-10.
2. Reed MD, Yamashita TS, Knupp CK, Veazey JM, Jr., Blumer JL. Pharmacokinetics of intravenously and intramuscularly administered cefepime in infants and children. *Antimicrob Agents Chemother*. 1997 Aug;41(8):1783-7.
3. Sime FB, Roberts MS, Tiong IS, Gardner JH, Lehman S, Peake SL, et al. Adequacy of high-dose cefepime regimen in febrile neutropenic patients with hematological malignancies. *Antimicrob Agents Chemother*. 2015 Sep;59(9):5463-9.
4. Roberts JA, Paul SK, Akova M, Bassetti M, De Waele JJ, Dimopoulos G, et al. DALL: defining antibiotic levels in intensive care unit patients: are current beta-lactam antibiotic doses sufficient for critically ill patients? *Clin Infect Dis*. 2014 Apr;58(8):1072-83.

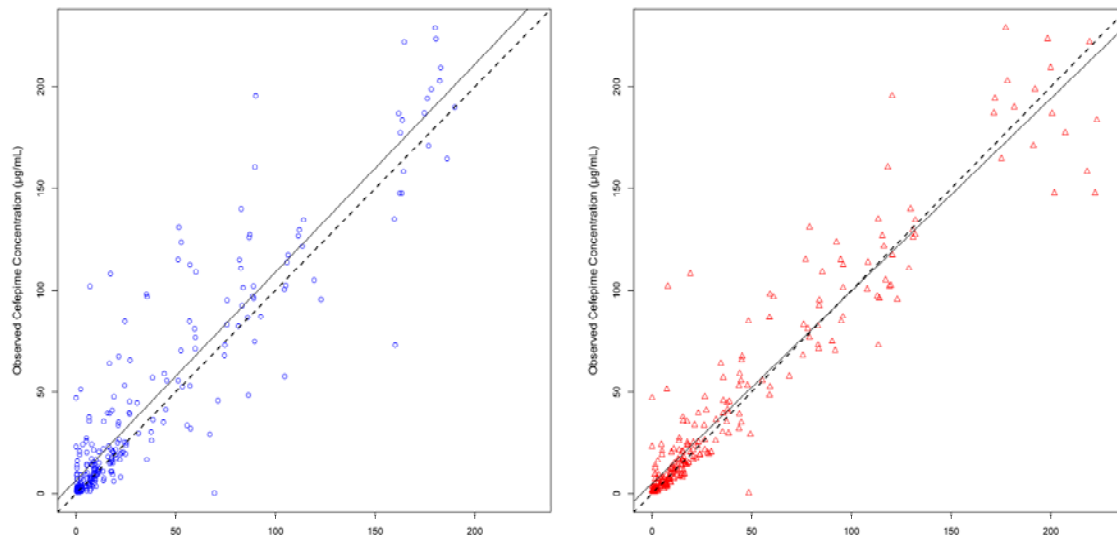
**Figure 2. Goodness-of-fit Plots for Best-Fit Population Cefepime Model**



*Solid line denotes linear regression; dashed line denotes reference line*

*For population predicted (blue),  $R^2=0.87$ , slope=0.946 (95% CI, 0.912 to 0.981), bias=0.529, imprecision=7.75; for individual predicted (red),  $R^2=0.965$ , slope=1.01 (95% CI, 0.996 to 1.03), bias=-0.148, imprecision=1.07*

**Figure 3. Goodness-of-fit Plots for Evaluation of Population Cefepime Model**

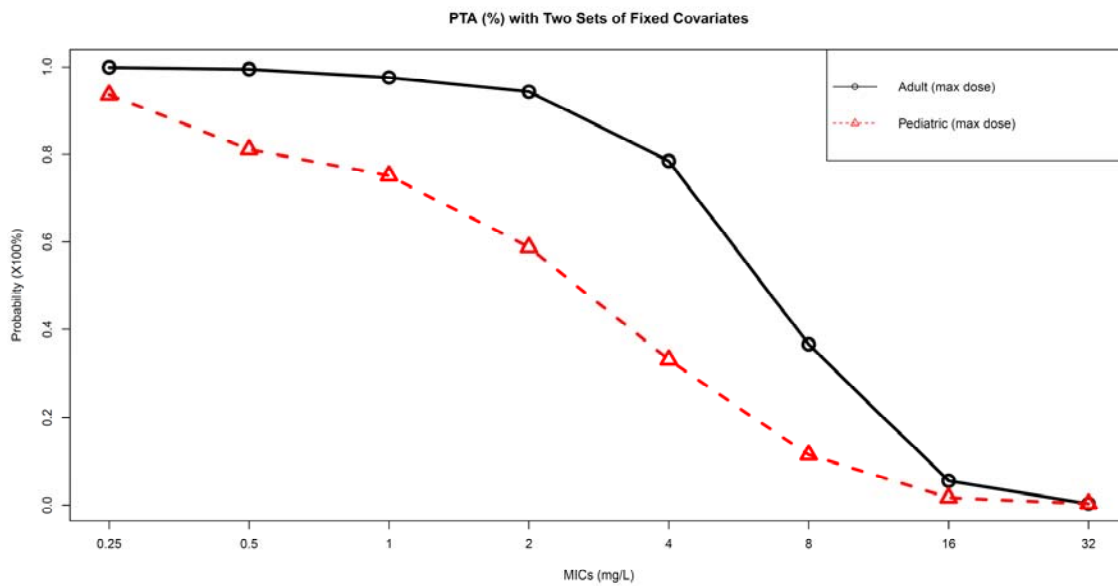


*Solid line denotes linear regression; dashed line denotes reference line*

*For population predicted (blue),  $R^2=0.84$ , slope=1.02 (95% CI, 0.967 to 1.08); for individual predicted (red),  $R^2=0.902$ , slope=0.947 (95% CI, 0.908 to 0.985)*



Figure 4. Probability of Target Attainment at Different Cefepime MICs



1 **Supplementary Materials**

2

3

4 Differential equations for two-compartment population PK model with covariate adjustments

5 are:

$$\frac{dX_1(t)}{dt} = \text{RateIV}(t) - (K_{CP} + K_e) \cdot X_1 + K_{PC} \cdot X_2$$

$$\frac{dX_2(t)}{dt} = K_{CP} \cdot X_1 - K_{PC} \cdot X_2$$

$$V_c = V_0 \cdot \left(\frac{\text{weight}}{70}\right)$$

$$K_e = (K_e \text{Intcpt} + \left(\frac{\text{CrCL}}{120}\right) \cdot K_e 0) \cdot \left(\frac{\text{weight}}{70}\right)^{-0.25}$$

6 , where  $V_c$  is the central cefepime volume of distribution,  $K_e$  is the elimination rate constant  
7 from the central compartment ( $\text{h}^{-1}$ ),  $K_{CP}$  is the rate constant from central to peripheral  
8 compartment ( $\text{h}^{-1}$ ), and  $K_{PC}$  is the rate constant from peripheral to central compartment ( $\text{h}^{-1}$ ).