

The importance of adolescent girls and “*epidemic gearing*” on HIV prevalence across West Africa

Holly J Prudden¹, Zindoga Mukandavire², Marelize Gorgens³, David Wilson³, Jasmina Panovska-Griffiths^{1,4,5}, Charlotte Watts^{1,6}

¹Department of Global Health and Development, London School of Hygiene and Tropical Medicine, London. UK.

²School of Computing, Electronics and Maths, University of Coventry, UK

³The World Bank, Washington DC. USA

⁴Department of Applied Health Research, University College London, London. UK.

⁵Institute for Global Health, University College London, London. UK.

⁶Departement for International Development, UK

Corresponding author: j.panovska-griffiths@ucl.ac.uk

Under review

Abstract

Background

In West Africa HIV prevalence varies between 0.1-6% in female and between 0.1-4% in the male general population. Male circumcision is almost universal, and it is unclear what drives this variation. We use mathematical modelling to identify the determinants of this variation across fourteen West African countries.

Methods

We developed a novel dynamic model of HIV transmission between population cohorts of female sex workers (FSWs), their clients, females with 2+ partners in the past year and other sexually active women and men in the general population. Parameter ranges were determined from the literature and sampled using Latin Hypercube sampling to identify parameter sets that fit West African HIV prevalence data. Partial-rank correlation coefficients between different model parameters and the HIV prevalence in general male and female population across 14 countries were calculated to determine to most significantly correlated model parameters to HIV prevalence.

Results

The key determinant of HIV in females when prevalence is between 0-3% is the size of the brothel and non-brothel FSW groups. When female HIV prevalence >3%, the percentage of sexually active adolescent females with 2+ partners has greater influence on HIV prevalence. The size of the FSW groups has the most significant impact on HIV prevalence for males.

Conclusions

Our findings confirm the role of FSWs in West Africa as an important determinant of HIV risk, but also identify, in countries with higher HIV prevalence, the emerging role of a group of adolescent girls with 2+ partners is an important determinant of risk. In fact, our findings suggest that this group may enable the epidemic to be effectively “gearing up” when partnerships are formed with higher-risk males, indicating additional prevention needs amongst this group.

Funding

This study was funded by UNAIDS.

1 Introduction

2 HIV in West Africa accounts for around 20% of all infections in sub-Saharan Africa with
3 HIV prevalence here generally lower than in other African regions [1] most likely as a result
4 of the almost universal practice of male circumcision across West Africa [2]. Around 30% of
5 all AIDS-related deaths worldwide occur in West Africa with reported 280,000 AIDS-related
6 deaths in 2017 [3] but are significant variations in HIV prevalence between countries (Figure
7 1). The National Demographic and Health Surveys (DHS) suggest that Nigeria, Cote d'Ivoire
8 and Cameroon have the highest HIV prevalence levels (4-6% among females and 2-4% in
9 males) in comparison to other countries (0.5-3% amongst both females and males [4,5])
10

11 Recent UNAIDS reports suggest that women are disproportionately affected by HIV in West
12 and Central Africa and account for around 57% of adults living with HIV in 2017. The
13 average HIV prevalence stands at 2.3% among adult women (15-49 years old), compared to
14 1.6% among adult men (15-49 years old) [4]. In addition, reports suggest that adolescent girls
15 and young women (aged 15-24) are disproportionately more likely to acquire HIV than their
16 male counterparts [4].
17

18 Past epidemiological studies from this region have suggested that commercial sex is a major
19 driver of the HIV epidemic [5] and that interventions focused on female sex workers (FSWs)
20 and their clients are highly effective at reducing the prevalence of sexually transmitted
21 infections (STIs) [5]. In addition, a mathematical modelling study has suggested commercial
22 sex work as a major driver of both the short and longer term epidemic trajectories in the
23 region [6]. However, our ecological analysis of variations in population prevalence levels
24 across West Africa highlight that, along with female commercial sex work, variations in HIV
25 prevalence amongst general population males and females between countries may be
26 associated with national variations in the percentage of younger females (15-24 years) that
27 have 2 or more (2+) partners in the past year, as defined by Demographic Health surveys [7].
28 The role of this adolescent girls group has previously been mentioned as a key population for
29 HIV control [8].
30

31 Our work expands this idea and aims to explore the role of this group of younger females
32 (15-24 years) that have 2 or more (2+) partners, in describing the variations in HIV
33 prevalence among different countries in West Africa. The overall aim of this work is to

34 identify the potential determinants of population variation in HIV prevalence among the
35 female and male general population in West Africa, considering 14 countries in the region.
36 Unlike our previous work [7], that focused on ecological analysis, here, we developed and
37 applied a dynamic model for HIV transmission between different cohorts at risk of acquiring
38 HIV in West Africa. Based on existing literature and work to date, we included cohorts of
39 FSW, clients and the general population. The novelty of our work is that, unlike previous
40 studies, within our model we incorporated a cohort of sexually active adolescent females with
41 multiple (2+) partners in the past year and allowed the model to have a proportionate mixing
42 pattern rather than a standard one. This means sexual partnerships between females 2+,
43 clients and males 2+ were distributed proportionately based on their number of partners (as
44 opposed to having a fixed number of sexual partners for each group). Including this group of
45 females with 2+ partners and the proportionate mixing pattern within a dynamic transmission
46 model, allowed us to model the groups' interactions with other population cohorts and hence
47 explore their role in describing the variations of HIV prevalence in West Africa.

48 **Methods**

49 The methodology for this work is described in Figure 2(a) with the novel proportionate
50 mixing pattern illustrated in Figure 2(b).

52 ***Model design***

53 We developed a deterministic compartmental model describing the transmission of HIV
54 infection among sexually active 15-49 year olds. The mathematical framework and model
55 equations are detailed in Appendix 1. In summary, the model stratifies the sexually active
56 population into two groups of female sex workers (brothel-based and non-brothel based) and
57 their respective client partner groups. In addition, the model includes a separate group of
58 adolescent females with 2+ non-commercial sexual partnerships in the past year and a group
59 of males (15-49) with 2+ non-commercial sex worker partners in the past year, as well as
60 subgroups representing other sexually active men and women in the general population. In
61 order to explore the population sexual mixing pattern that best represents West Africa, we
62 introduced a mixing matrix based on a "fixed proportionate" mixing scenario (depicted in
63 Figure 2(b)). Here, we created an additional parameter, ζ , to represent the proportion of
64 partnerships females 2+ have with men who are also clients (of either brothel-based or non-
65 brothel based FSW). This parameter was also sampled in the course of the uncertainty
66 analysis.

67

68 *Model Parameterisation*

69 Biological, epidemiological parameter data and published developmental indicators for West
70 Africa were extracted from the literature. A full parameter table, including additional
71 information on the computation and extraction of data is provided in Appendix 1. Table 1
72 below is a shortened version of the table showing only the parameters that were used as
73 model inputs for our statistical uncertainty analysis. Based on the data from DHS surveys
74 across the region we assume the entire male population are circumcised [9]. The probability
75 of transmission per act is estimated using a wide range and this incorporates the potential
76 presence of sexually transmitted infections, anal sex acts (in addition to vaginal sex acts) and
77 the effects of anti-retroviral therapy, which is introduced into the model 20 years after the
78 start of the epidemic.

79

80 *Uncertainty analysis and model calibration*

81 For each of these parameters in Table 1, we generated a range of plausible estimates from the
82 literature to account for the parameter variations across West African countries. We then
83 sampled within each parameter range (splitting it uniformly into 40,000 samples) using a
84 Latin Hypercube sampling [10] to generate 800,000 parameter combinations as inputs to the
85 mathematical model. For each parameter combination, the model was solved numerically in
86 R programming environment until HIV steady state across the different population cohorts
87 was achieved. To calibrate the model, only the projections where HIV prevalence was within
88 the literature-reported ranges for West Africa in 2017 (as per Figure 1 generated with data
89 from [11,12] were retained. Specifically, model projected HIV prevalence of 0.5-6% in the
90 general female population, 0.5-4% in the general male population, 15-48% in the brothel-
91 based FSW group and 10-25% in the non-brothel based FSW group were kept as model fits
92 and to reflect the HIV prevalence in West African in Figure 1. No fitting criteria were applied
93 to the female 2+ group, male 2+ group or the brothel-based FSW clients and non-brothel
94 based FSW client groups due to the provision of insufficient data for these subgroups.

95

96 *Correlation analysis*

97 Among the projected model outcomes we assessed the correlation of different model
98 parameters with the HIV prevalence among the general male and female population. We
99 computed the partial rank correlation coefficient (PRCC) between the different model
100 parameters and, for those where there was correlation, the statistical significance (p-value) of

101 the correlation with male and female HIV prevalence. By doing this we characterised the
102 linear relationship between the different parameter inputs and different HIV prevalence
103 values that correspond to values within West Africa. This analysis was run in Stata v14.

104 We considered the correlation in different HIV prevalence brackets: firstly assessing the full
105 range of HIV prevalence in males (0.1-4%) and females (0.1-6%). Then, given the variation
106 in the HIV prevalence amongst females and males in West Africa across the different 14
107 countries, we considered three HIV prevalence categories for females {0.1-2%, 2-3%, 3-6%}
108 and males {0.1-2%, 2-3%, 3-4%}

109

110 **Results**

111 Overall, for model projected HIV prevalence to be 0.1-4% in the males, 0.1-6% in females,
112 15-48% in the brothel-based FSW group and 10-25% in the non-brothel based FSW group,
113 the model generated a total of 11,164 fits. Tables 2 and 3 contain the results of the correlation
114 analysis between HIV prevalence among females and males in 14 West African countries and
115 the model parameters. Figure 3(a)-(b) show the graphical representation of the results from
116 Tables 2 and 3, with the inner ring in each Figure containing the results from Table 2 and the
117 outer ring containing the results from Table 3.

118

119 *Key determinants of HIV prevalence in females*

120 When we consider all countries collectively, where HIV prevalence among the female
121 general population ranges from 0.1-6% (Table 2 and Figure 3(a) inner ring), the size of the
122 population of the female 2+ group (p_{FTS}) emerges as the most significant determinant of HIV
123 prevalence among females. Of importance is also the number of sexual partners this group
124 has (C_{CTS}^{TS}), as well as the size of the non-brothel based sex-worker group (p_{FNB}) and the
125 parameter (ξ) that describes the proportion of sex acts females 2+ have with clients of FSWs
126 (as opposed to their corresponding males 2+ group). The size of the brothel based FSW
127 groups (p_{FBB}) is also positively and significantly correlated with HIV prevalence among the
128 females, highlighting the importance of the relative size of all sexually active female
129 population groups.

130 In 9 out of the 14 countries, HIV prevalence among females is low (0.1-2%) and female HIV
131 prevalence is most strongly correlated to the size of both brothel-based and non-brothel based
132 FSW groups (p_{FNB} and p_{FBB}) and to a lesser extent to the size of the group of females with
133 2+ partners (p_{FTS}) (Figure 3(b)). However, the mixing pattern via the parameter (ξ) and the

134 number of sexual partners of the female 2+ group (C_{CTS}^{TS}) do remain positively correlated to
135 female HIV prevalence here (Table 2; 2nd row and Figure 3(b) inner ring). The results are
136 similar in countries (2 out of 14) where HIV prevalence is between 2-3%, with the size of the
137 FSW (P_{FNB}, P_{FBB}) groups most significantly correlated to HIV prevalence in females, and the
138 size of the female 2+ group less important. Partnership numbers and duration of being a
139 member of a higher-risk group (respectively ξ and C_{CTS}^{TS}) (Table 2; 3rd row; Figure 3(c) inner
140 ring), become more important factors in countries where HIV prevalence is slightly higher.
141 For countries in which female general population HIV prevalence is within the highest
142 prevalence range, 3-6% (3 out of 14 countries), the model indicates that the size of the female
143 2+ group (P_{FTS}) is most strongly associated with HIV prevalence (Figure 3(d) inner ring).
144 The parameter describing the proportion of partnerships females with 2+ partners form (ξ)
145 with clients of FSWs, continues to be an important driver of HIV prevalence, while the size
146 of the FSW groups becomes relatively less significant. This final observation is partly seen
147 because the size of the FSW groups within the model are constrained, based on evidence
148 from surveys.

149

150 *Key determinants of HIV prevalence in males*

151

152 For males, HIV prevalence ranges from 0.1-4% across the 14 countries. Our results show that
153 the population size of the FSW groups (both brothel and non-brothel based; respectively
154 P_{FBB} and P_{FNB}) is the most important determinant of HIV prevalence for the male general
155 population in West Africa (Figures 3(a)-(d) outer ring). The number of client partners that sex
156 workers have (C_{FBB}^C) and the transmission probability of acquiring HIV as a female from a
157 male partner (β_{mf}) (Figure 3(a) outer ring) are important. The number of sexual partners of
158 females 2+ (C_{CTS}^{TS}) and the size of the population size of female 2+ (P_{FTS}) are also positively
159 correlated with male HIV prevalence but to a lesser extent (Table 3), as is the parameter (ξ)
160 that describes the proportion of sex acts females 2+ have with clients of FSWs.

161 In West African countries with lower HIV prevalence among the male general population (0-
162 2% in 12 out of 14 countries), we observe that the most relevant determinant of HIV
163 prevalence is the population size of non-brothel-based FSWs (P_{FNB}) and brothel based FSW
164 (P_{FBB}). In countries with higher HIV prevalence in the male general population (2-3% in 1 of
165 14 countries) the size of the FSWs groups (P_{FNB} and P_{FBB}) remains important, with the
166 number of partners of Females 2+ partners (C_{CTS}^{TS}) and the condom use among non-brothel

167 based FSWs (f_{FNB}) also correlated but to a lesser extent (Table 3 and outer ring of Figure
168 3(c)). Finally, in countries with higher HIV prevalence among the male general population
169 (3-4%, 1 of 14 countries) only two parameters describing the size of the two FSW groups
170 significantly affect the HIV prevalence in males (Table 3; last row and outer ring of Figure
171 3(d)).

172

173 Discussion

174

175 Our results suggest that as female HIV prevalence increases across different West African
176 countries, from 0.1-2% (in 9 out of 14 countries) through to 2-3% (2 out of 14 country) and
177 then 3-6% (in 3 out of 14 country), the correlation between the parameters associated with the
178 groups of female with 2+ partners and the HIV prevalence among females increases (results
179 within the inner ring of Figure 3(a)-(d) and pictorially represented in Figure 4). Therefore,
180 our results suggest that this group of females with 2+ partners, may have a gearing-type role
181 in sustaining high HIV prevalence among females in West Africa.

182

183 In contrast, as male HIV prevalence increases, from 0.1-2% (in 12/14 countries) through to
184 2-3% (1/14 country) and then 3-4% (in 1/14 country), the correlation between the parameters
185 associated with the FSWs groups and the HIV prevalence among males increases (results
186 within the outer ring of Figure 3(a)-(d) and pictorially represented in Figure 4). Therefore,
187 our results show that the size of the FSW groups and their sexual activity may be more
188 responsible for sustaining high HIV prevalence among males in West Africa.

189

190 Past studies have emphasised the importance of sex work and other vulnerable groups as key
191 determinants of HIV prevalence [13] to sustain HIV prevalence of 0-3% among the general
192 population [6] and demonstrated that the size of the FSW population (relative to the total
193 population) is the most important determinant of HIV prevalence [14]. The findings from our
194 study show that whilst (brothel and non-brothel) sex work is an important determinant of HIV
195 prevalence in both females and males across the 14 West African countries, the size of the
196 female 2+ group, also emerges as an important determinant of HIV prevalence, particularly
197 for countries with higher prevalence levels and among the female HIV prevalence. For lower
198 level epidemics in most countries, the size of FSW groups remains the key determinant in
199 agreement with the findings of [14]. However, when stratifying the HIV epidemics into

200 respective categories of HIV prevalence in both males and females, we provide evidence of a
201 potential transitional phase within an epidemic which we depicted in Figure 4. This is an
202 interesting hypothesis which potentially highlights a change in the nature of an HIV epidemic
203 (perhaps more formally known as going from being a ‘concentrated’ to a ‘generalised’
204 epidemic, as characterised by UNAIDS), from one being more dependent on the size and
205 sexual activity of female sex workers, to an epidemic in which the subgroup size and sexual
206 activity of young females, with multiple partners, is of equal importance. This same transition
207 is not seen when the analysis is repeated for males, which aligns more consistently with the
208 theory of a larger population of male clients acting as a ‘bridge’ to female partners. Whilst
209 traditionally in modelling analyses, these females were thought to be ‘long term’ steady
210 partners, our analysis suggests that younger more vulnerable females could also act as a
211 highly vulnerable group for acquiring new HIV infections, particularly if they are forming
212 partnerships with men who are also clients of FSWs.

213

214 The findings from this analysis are important. Firstly, they confirm three previous findings:
215 (a) that commercial sex work remains important for HIV transmission in West Africa,
216 particularly in lower level epidemics and for sustaining HIV prevalence among the male
217 general populations, in agreement with previous findings [14] (b) that when HIV prevalence
218 is high amongst FSWs, a large proportion of HIV infections may be attributable to these
219 groups alone and is in line with previous findings [15]; and (c) they support the hypothesis on
220 the importance of behaviours that modify the risk of acquiring infection (e.g. fewer partner
221 numbers, shorter durations in sex work and higher levels of condom use) as protective
222 barriers against infection. Secondly, our results are in support of the idea of a type of
223 “*epidemic gearing*” effect depicted in Figure 4. This will imply that, for the epidemic to have
224 the propensity to grow, it needs to be effectively “geared up”, firstly, by smaller high-sexual
225 activity groups of FSWs, and then secondly, through the larger subgroup of adolescent
226 females 2+, which act as an additional larger “cog” in the epidemic chain enabling the
227 epidemic to achieve higher-levels of HIV prevalence (Figure 4). Here the concept of
228 behavioural heterogeneity and the importance of approaches that seek to identify high-risk
229 individuals and understanding the structure of sexual networks emerge as important.

230

231 Although our results are important, for epidemics in countries where HIV prevalence is high
232 (e.g. higher than 4% in West Africa), transmission pathways may require a more advanced
233 understanding of the underlying factors driving the epidemic. We strongly support the

234 collection of more behavioural data to better understand and inform these pathways, and
235 advocate for closer collaborations between modellers and social scientists, so that
236 mathematical model structures better reflect the true dynamics of HIV epidemics.

237

238 Our analysis does have several limitations. Estimates on the percentage of adolescent females
239 reporting 2+ partners is mostly extracted from the DHS data. Whilst there is some
240 comparability internally and between countries, typically questions on sexual behaviours are
241 prone to under-reporting, especially amongst women. All results should be interpreted with
242 caution, and the nature of the findings are partly a consequence of the model's structure,
243 although we believe this to be a more useful representation of sexual networks and
244 transmission pathways, supported by evidence both from the modelling and social science
245 literature.

246

247 Population data from DHS surveys suggests that the percentage of adolescent females with
248 multiple partners, may comprise up to 9% of the total female population, with other studies
249 reporting higher percentages [16-18]. This modelling study, shows the importance of the size
250 and sexual activity of the female 2+ group and more broadly the need to assess and
251 understand behaviours that shape sexual network structures as well as those that modify the
252 risks of acquiring infection, in determining variations in HIV prevalence. However, to date,
253 very few mathematical models of HIV transmission in the general population explicitly
254 include or recognise the importance of an adolescent female 2+ group, despite the high levels
255 of incidence in this population. In addition, more accurate data on the estimated subgroup
256 size for high-risk groups of female sex workers is often absent from modelling studies,
257 despite demonstrating here the fundamental importance of this.

258 In our correlation analysis we have chosen to use PRCC rather than other correlation
259 coefficients, as we believe that it provides good insight on the global sensitivity of the system
260 and projects the parameters that are most influential (or significant) even if other parameters
261 are simultaneously perturbed. Other correlation analysis (e.g. Pearson correlation) are more
262 based on local sensitivity calculations and can provide insight into small perturbations around
263 the key parameters, but can often ignore the impact of large perturbations, something we
264 wanted to include. Future analysis will consider contrasting different correlation measures
265 and discuss the differences in the findings.

266

267 Our findings have the potential to have important implications for future policy. The
268 UNAIDS definition for a concentrated epidemic is one in which HIV prevalence is less than
269 1% in the general population and over 5% prevalence in key risk groups such as FSWs, with
270 the caveat being that no subpopulation is fully self-contained and these thresholds should be
271 interpreted with caution [19]. However, here we demonstrate the dangers of such rigid
272 definitions, by highlighting the subtle maturity that may occur in epidemics from those driven
273 predominantly by commercial sex work, to those in which both the role of commercial sex
274 and the size and sexual behaviours of other populations is important. The social science
275 literature should be a greater source of information, highlighting in particular the
276 vulnerability of young females [20,21].

277

278 Finally, despite much focus on interventions being towards reducing the biological
279 probability of transmission, our findings suggest that programmes which result in fewer
280 women practicing sex work and fewer young females engaging in higher-risk partnerships,
281 could play a key role in reducing the size of the HIV epidemics in West Africa. In the future,
282 sex work may become less prevalence as women become more empowered with better
283 education, jobs and earning potential as African countries continues to develop. Future
284 policies on HIV should focus on treatment, prevention, but also key aspects of women's
285 development, to ensure they are able to make the best most informed decisions.

286

287 **Funding**

288 This study was funded by UNAIDS and supported by the STRIVE research programme
289 consortium within London School of Hygiene and Tropical Medicine funded by the
290 Department for International Development. JPG's work was funded by the National Institute
291 for Health Research (NIHR) Collaboration for Leadership in Applied Health Research and
292 Care North Thames at Barts Health NHS Trust. The views expressed are those of the authors
293 and not necessarily those of the NHS, the NIHR, the Department of Health and Social Care,
294 the Department for International Development or UNAIDS.

295

296 **Acknowledgements**

297 We would like to thank Prof Peter Vickerman (University of Bristol) and Dr Kate Mitchell
298 (Imperial College London) for their early contributions to this work, to Prof Timothy Hallett
299 (Imperial College London) and Dr Deirdre Hollingsworth (Warwick University) for their

300 contributions the methodology of the correlation analysis and to Prof Graham Medley
301 (LSHTM) for his insightful contribution to discussion of the interpretation of the findings
302 from this study.

303

304 **Competing interests statement**

305 No authors have competing interests.

Under review

References

1. UNAIDS special report: How Africa turned AIDS around, available on http://www.unaids.org/en/media/unaids/contentassets/documents/unaidspublication/2013/20130521_Update Africa.pdf (accessed 20/09/2019)
2. Weiss HA, Quigley MA, Hayes, RJ 2000. Male circumcision and risk of HIV infection in sub Saharan Africa: a systematic review and meta-analysis. *AIDS.*, 20, 2361-70.
3. UNAIDS 2017. UNAIDS special report. Ending AIDS: Progress towards 90-90-90 targets. https://www.unaids.org/sites/default/files/media_asset/Global_AIDS_update_2017_en.pdf (accessed October 2018)
4. Beattie T, Bobrova N, D, Watts C. Sex work typologies in West Africa: a literature review and discussion of the implications for HIV modelling. 2011. *In: LONDON SCHOOL OF HYGIENE AND TROPICAL MEDICINE* (ed.). London School of Hygiene and Tropical Medicine and The World Bank.
5. Lowndes CM, Alary M, Labbé AC, Gnintoungbè C, Belleau M, Mukenge L, Meda H, Ndour M, Anagonou S, Gbaguidi A. Interventions among male clients of female sex workers in Benin, West Africa: an essential component of targeted HIV preventive interventions. *Sex Transm Infect*, 83, 577-581.
6. Boily MC, Pickles M, Alary M, Baral S, Blanchard J, Moses S, Vickerman P, Mishra S. What Really Is a Concentrated HIV Epidemic and What Does It Mean for West and Central Africa? Insights From Mathematical Modeling. *J Acquir Immune Defic Syndr*, 68 Suppl 2, S74-82.
7. Prudden H, Beattie T, Bobrova N, Panovska-Griffiths J, Mukandavire Z, Gorgens M, Wilson D, Watts C. Factors associated with variations in population HIV prevalence across West Africa? Findings from an ecological analysis PLoS One. (2015) 10(12):e0142601.
8. Dellar RC, Dlamini S, Karin QA. Adolescent girls and young women: key populations for epidemic control. *JAIDS* 2015. 18(51); doi: 10.7448/IAS.18.2.19408
9. USAID. *Demographic and Health Surveys* [Online]. Available: <http://dhsprogram.com/data/> (accessed 16/01/2019).
10. Fenniak M. 2004. *Latin Hypercube Sampling* [Online]. Available: <http://mathieu.fenniak.net/latin-hypercube-sampling/>. (accessed 20/09/2019)
11. Report on HIV prevalence in Nigeria. 2017. <https://www.childrenandaids.org/sites/default/files/2017-11/NATIONAL-HIV-AND-AIDS-STRATEGIC-FRAMEWORK.pdf>, (accessed 15/06/2019).

12. Report on HIV data across West African countries. UNAIDS 2017.
<https://www.unaids.org/en/regionscountries/westandcentralafrica>, (accessed 20/06/2019)
13. Lowndes CM¹, Alary M, Meda H, Gnintoungbé CA, Mukenge-Tshibaka L, Adjovi C, Buvé A, Morison L, Laourou M, Kanhonou L, A. Role of core and bridging groups in the transmission dynamics of HIV and STIs in Cotonou, Benin, West Africa. 2002. *Sex Transm Infect*, 78, i69-77.
14. Ghani, AC, Aral SO. Patterns of Sex Worker–Client Contacts and Their Implications for the Persistence of Sexually Transmitted Infections. 2005. *Journal of Infectious Diseases*, 191, S34-S41
15. Wilson D 2006. HIV Epidemiology: A review of recent trends and lessons. In: THE WORLD BANK (ed.) *Global HIV/AIDS Program*
16. Atwood KA, Kennedy SB, Shamblen S, Taylor CH, Quaqua M, Bee EM, Gobeh ME, Woods DV, Dennis B. Reducing sexual risk taking behaviors among adolescents who engage in transactional sex in post-conflict Liberia. 2012. *Vulnerable Child Youth Stud*, 7, 55-65.
17. Moore AM, Biddlecom AE, Zulu EM. Prevalence and meanings of exchange of money or gifts for sex in unmarried adolescent sexual relationships in sub-Saharan Africa. 2007. *Afr J Reprod Health*, 11, 44-61.
18. Owoaje ET, Uchendu OC. Sexual risk behaviour of street youths in south west Nigeria. 2009. *East Afr J Public Health*, 6, 274-9.
19. UNAIDS. 2011. *Terminology Guidelines* [Online]. Available:
http://www.unaids.org/en/media/unaids/contentassets/documents/unaidspublication/2011/JC2118_terminology-guidelines_en.pdf
20. Luke N. Age and Economic Asymmetries in the Sexual Relationships of Adolescent Girls in Sub-Saharan Africa. 2003. *Studies in Family Planning*, 34, 67-86.
21. Luke N, Kurz KM. Cross-generational and Transactional Sexual Relations in Sub-Saharan Africa Washington DC: ICRW. 2002.

FIGURES

Figure 1(a) and (b) HIV prevalence in the general adult female (a) and male (b) populations across 14 West African countries. HIV prevalence data is taken from UNAIDS report <https://www.avert.org/hiv-and-aids-west-and-central-africa-overview> from 2017

Figure 2 (a): Description of the methodology for this paper. (b) Sexual mixing patterns in the population. Black arrow denote partnership: Sexual partnerships exist between the two FSW groups and their respective client groups and between clients and females with 2+ partners. Younger females 2+ also partner with males 2+. Separate groups of general population males and females form partnerships with one another, with a given proportion also having longer term partnerships with clients (in the case of females) and FSW (in the case of males (to represent the wives of clients and husbands of sex workers, respectively).

Figure 3: (a)-(d): Bar charts of the partial rank correlation coefficient (PRCC) between a selection of model parameters from Table 1 and the HIV prevalence in female and male general population across different HIV prevalence brackets. The absolute values of the PRCC are shown in Tables 2 and 3, and we only consider parameters that significantly influence the HIV prevalence (p-value <0.05).

Figure 4: Conceptual idea of the “epidemic gearing” effect of HIV epidemics in West Africa (the black dashed lines represent the “gearing effect” of the epidemic, by representing the sexual network connections between risk groups in the population)

TABLES

Table 1: Biological and behavioural parameter estimates and ranges for countries across the West Africa region with ranges derived from existing literature.

Table 2: Results from the correlation analysis across different HIV prevalence ranges for the female population and across different West African countries that fit with these ranges. We project the impact and significance of the key model parameters.

Table 3: Results from the correlation analysis across different HIV prevalence ranges for the male population and across different West African countries that fit with these ranges. We project the impact and significance of the key model parameters.

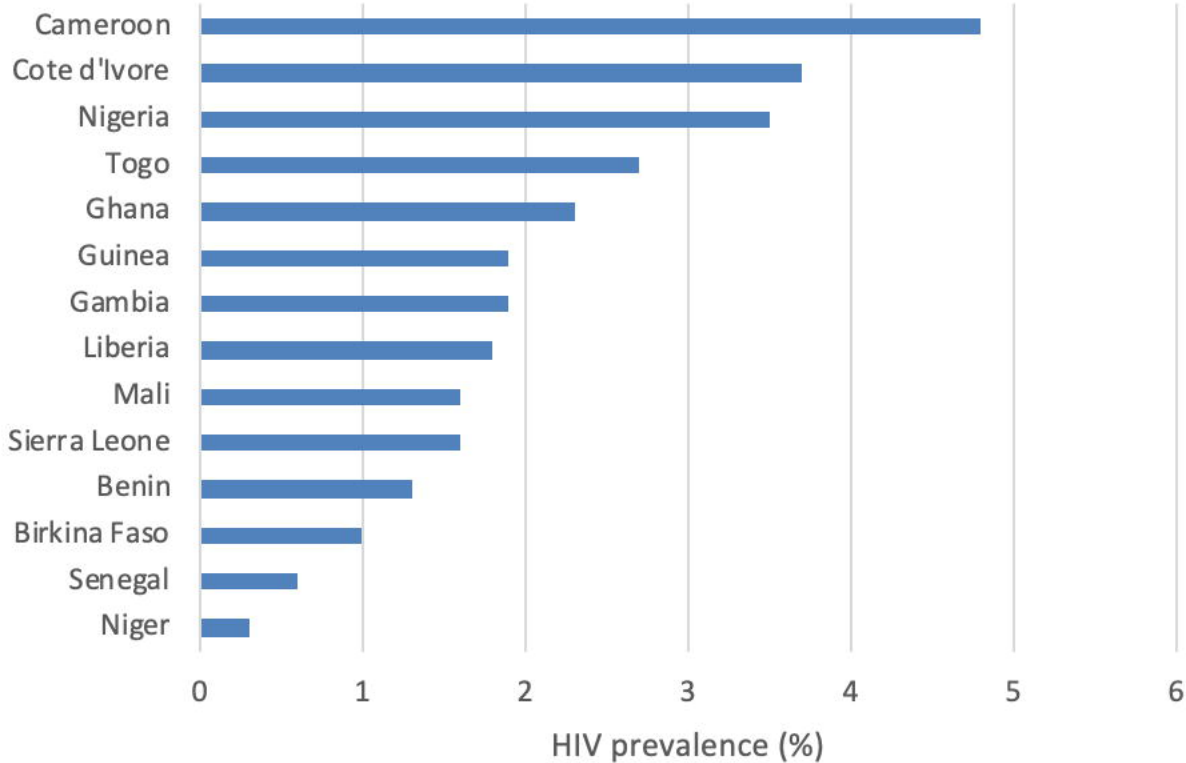
Supplementary Material

Appendix A: Description of the novel mathematical model for HIV transmission in West Africa

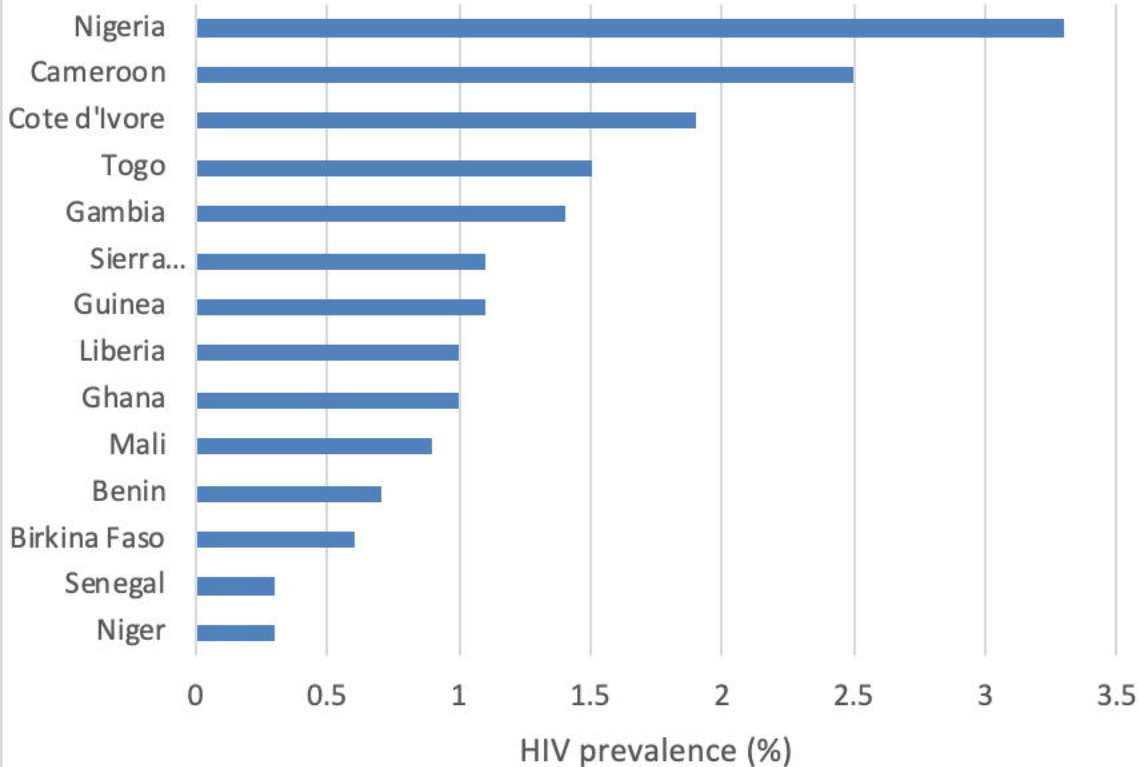
Supplementary Table S1: Model parameters and their values

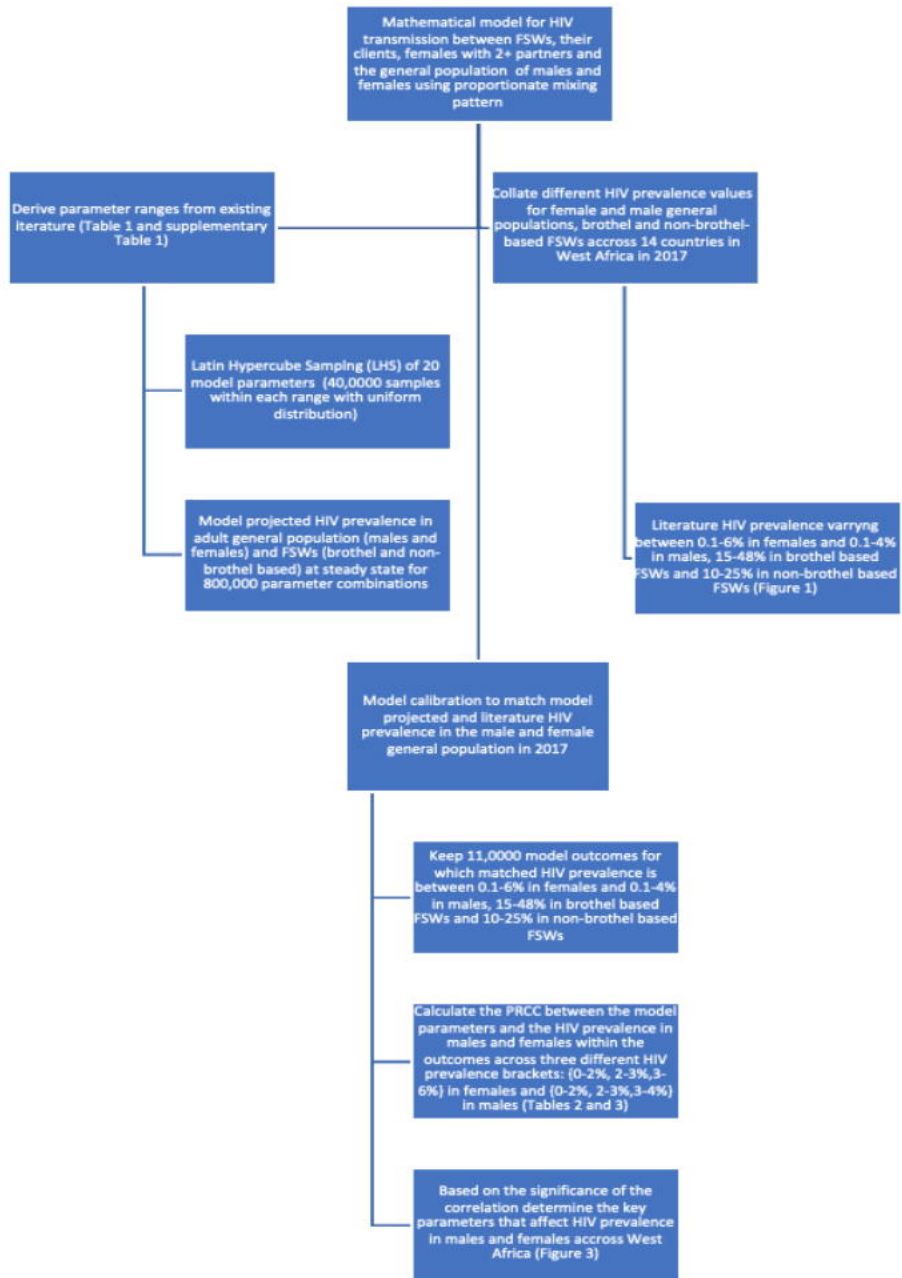
Under review

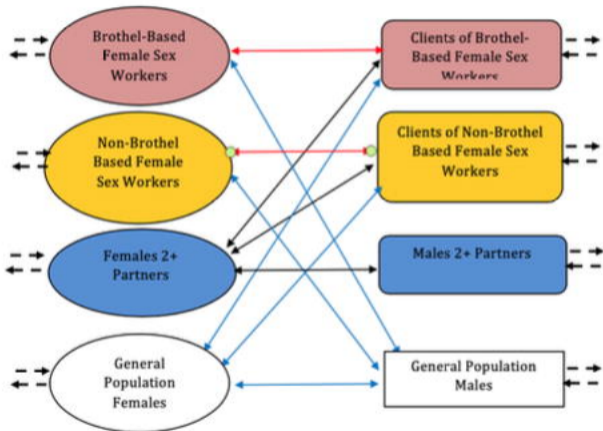
(a) HIV prevalence in woman adult population



(b) HIV prevalence in male adult population







- Sexual partnerships of female sex workers
- Sexual partnerships of females 2+
- Sexual partnerships of members of the general population
- Individuals move in, out and between groups

(a) 0-4% HIV prevalence in males and 0-6% HIV prevalence in females



- Pfts
- Pfnb
- Pfbb
- Cfnb
- Cfbf
- Ccts
- ffnb
- ffbb
- ffts
- 1/αnb
- 1/αbb
- 1/φbb
- βfm
- βmf
- ksi

(b) 0-2% HIV prevalence in males and females

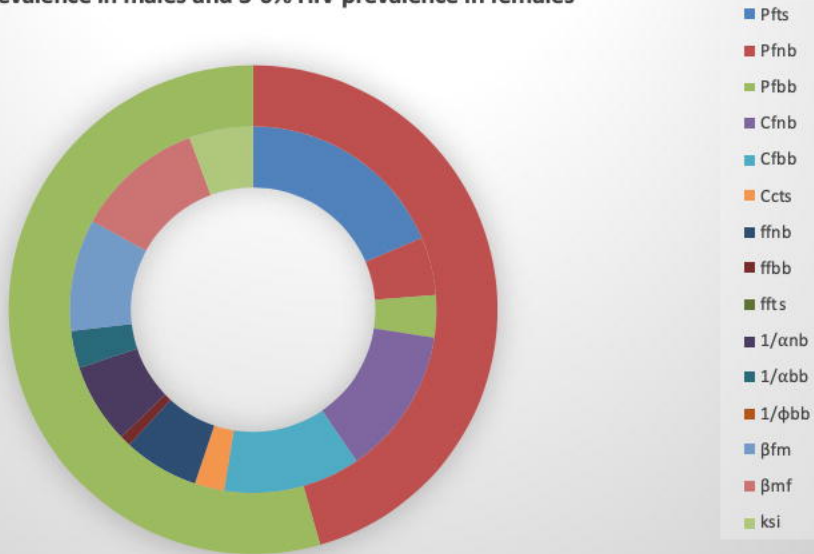


- Pfts
- Pfnb
- Pfbb
- Cfnb
- Cfbb
- Ccts
- ffnb
- ffbb
- ffts
- 1/αnb
- 1/αbb
- 1/φbb
- βfm
- βmf
- ksi

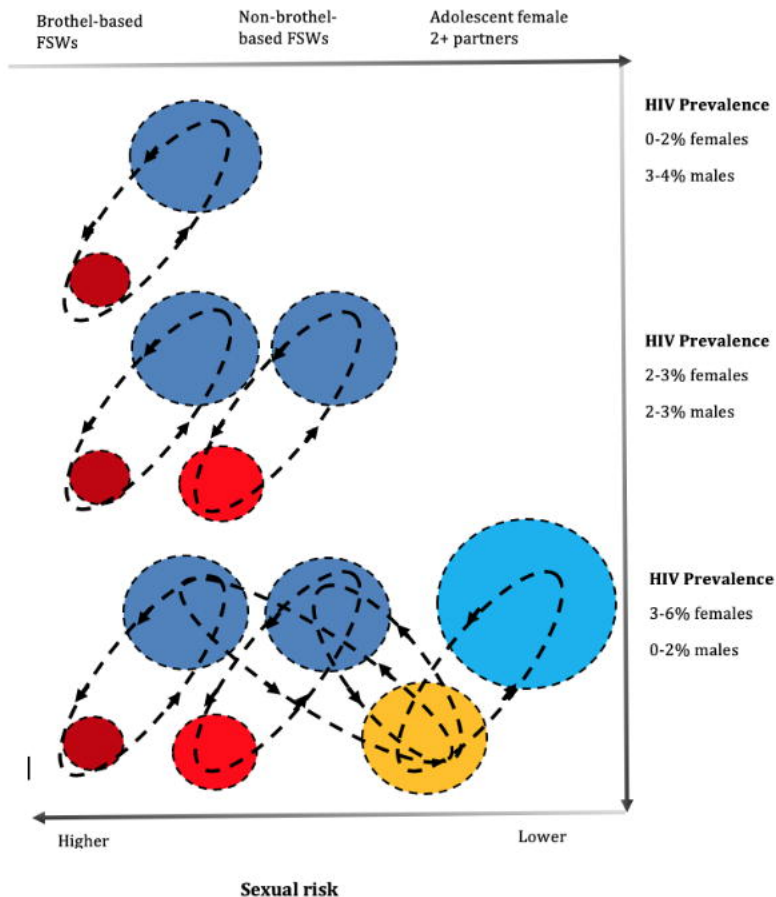
(c) 2-3% HIV prevalence in males and females



(d) 3-4% HIV prevalence in males and 3-6% HIV prevalence in females



Female subgroup size (relative to total size of female population)



Description of population groups

- Brothel-based FSW
- Non-brothel based FSW
- Female 2+ adolescent group
- Clients of brothel-based and Non-brothel based FSWs
- Male (2+) low-risk partners of female 2+

Description	Symbol	Range of parameter values with reference [X]
Probability of HIV transmission	(β_{mf}, β_{fm})	0.006-0.06
Relative size of Brothel-based FSWs group	P_{FBB}	0-1.1%
Relative size of Non-brothel based FSWs group	P_{FNB}	0.15-3%
Relative size of Females with 2+ partners group	P_{FTS}	0.1-20%
Number of client partners of brothel-based female sex worker.	C_{FBB}^c	252-1092/yr
Number of client partners of non-brothel based FSWs	C_{FNB}^c	42-336/yr
Number of partners of Females 2+ partners (these include client partners of both brothel-based and non-brothel based FSWs as well as males 2+ partners)	C_{CTS}^{TS}	3-24/yr ¹
Number of brothel based FSWs, clients of brothel-based FSW form partnerships with.	C_{CBB}^c	12-48/yr
Number of non-brothel based FSWs, clients of non-brothel based FSWs form partnerships with.	C_{CNB}^c	12-48/yr
Consistency of condom use among Brothel-based female sex workers	f_{FBB}	41-83% (adjusted for efficacy)
Consistency of condom use among Non-brothel based female sex workers	f_{FNB}	41-68%
Consistency of condom use of females with 2+ partners	f_{FTS}	10-39%
Duration of brothel based female sex workers	$1/\alpha_{BB}$	0.5-6 yrs
Duration of non-brothel based female sex workers	$1/\alpha_{NB}$	0.5-6 yrs
Duration of Females 2+	$1/\alpha_{TS}$	1-15 yrs
Duration of brothel based clients	$1/\varphi_{BB}$	5-10yrs
Duration of non-brothel based clients	$1/\varphi_{NB}$	5-10yrs
Duration of Males 2+	$1/\varphi_{TS}$	5-20yrs
Percentage of sex acts of females 2+ with client partners of brothel-based and non-brothel based FSWs	ξ	0-100%
(Percentage of sex acts of females 2+ with non-client male partners)	$1 - \xi$	0-100%

HIV prevalence range	West African countries with HIV prevalence in the range	Number of model fits in range	Model parameter	Partial rank correlation coefficient (PRCC)	p-value	Key determinants of HIV prevalence (in order of relevance)
0-6%	All 14 countries in Figure 1	11162	P_{FTS}	0.479	<0.0001	1. Population size of female 2+ (P_{FTS}) 2. Population size of Non-brothel based FSW (P_{FNB}) 3. Number of partners of Females 2+ partners (C_{FTS}^{TS}) 4. Proportion of female 2+ sexual partnerships formed with clients FSWs (ξ) 5. Population size of Brothel based FSW (P_{FBB})
			P_{FNB}	0.359	<0.0001	
			C_{FNB}^{TS}	-0.2861	<0.0001	
			$1/\alpha_{NB}$	-0.2477	<0.0001	
			C_{FTS}^{TS}	0.2377	<0.0001	
			ξ	0.2248	<0.0001	
			P_{FBB}	0.1909	<0.0001	
			C_{FBB}^{TS}	-0.1579	<0.0001	
			β_{mf}	0.1561	<0.0001	
			$1/\alpha_{BB}$	-0.155	<0.0001	
			f_{FNB}	0.1482	<0.0001	
			f_{FBB}	0.111	<0.0001	
			β_{fm}	-0.0833	<0.0001	
			f_{FTS}	-0.0315	0.0009	
			$1/\varphi_{BB}$	-0.0233	0.0138	
				0.0207	0.0288	
0-2%	9 countries: Niger Senegal Liberia Birkina Faso Sierra Leone Benin Mali Gambia Guinea	2297	P_{FNB}	0.3359	<0.0001	1. Population size of Non-brothel based FSW (P_{FNB}) 2. Population size of Brothel based FSW (P_{FBB}) 3. Population size of female 2+ (P_{FTS}) 4. Proportion of female 2+ sexual partnerships formed with clients FSWs (ξ) 5. Number of partners of Females 2+ partners (C_{FTS}^{TS})
			P_{FBB}	0.2449	<0.0001	
			P_{FTS}	0.181	<0.0001	
			ξ	0.1652	<0.0001	
			$1/\alpha_{NB}$	-0.1527	<0.0001	
			C_{FTS}^{TS}	0.1313	<0.0001	
			$1/\alpha_{BB}$	-0.1105	<0.0001	
			C_{FNB}^{TS}	-0.1094	<0.0001	
			f_{FNB}	0.0709	0.0007	
			β_{mf}	0.0385	0.0661	
2-3%	2 countries: Togo Ghana	1772	P_{FNB}	0.0973	<0.0001	1. Population size of Non-brothel based FSW (P_{FNB}) 2. Population size of Brothel based FSW (P_{FBB}) 3. Population size of female 2+ (P_{FTS}) 4. Proportion of female 2+ sexual partnerships formed with clients FSWs (ξ) 5. Number of partners of Females 2+ partners (C_{FTS}^{TS})
			P_{FBB}	0.097	<0.0001	
			P_{FTS}	0.0966	0.0001	
			ξ	0.0723	0.0024	
			C_{FTS}^{TS}	0.0692	0.0037	
			C_{FBB}^{TS}	-0.0626	0.0087	
			$1/\alpha_{NB}$	-0.0577	0.0156	
			$1/\alpha_{BB}$	-0.0557	0.0196	
3-6%	3 countries: Cameroon Nigeria Core d'Ivoire	1894	P_{FTS}	0.3317	<0.0001	1. Population size of female 2+ (P_{FTS}) 2. Transmission probability from male to female (β_{mf}) 3. Condom use among non-brothel-Based FSWs (f_{FNB}) 4. Proportion of female 2+ sexual partnerships formed with clients FSWs (ξ) 5. Population size of Non-brothel based FSW (P_{FNB})
			C_{FNB}^{TS}	-0.232	<0.0001	
			C_{FBB}^{TS}	-0.2155	<0.0001	
			β_{mf}	0.2023	<0.0001	
			β_{fm}	-0.176	<0.0001	
			f_{FBB}	0.01721	<0.0001	
			$1/\alpha_{NB}$	-0.1262	<0.0001	
			f_{FNB}	0.1188	<0.0001	
			ξ	0.1006	<0.0001	
			P_{FNB}	0.0912	0.0001	
			P_{FBB}	-0.0665	0.004	
			$1/\alpha_{BB}$	-0.0586	0.0111	
			C_{FTS}^{TS}	0.0467	0.0432	

Prevalence range	West African countries with HIV prevalence in the range	Number of model fits in range	Input parameter	PRCC	p-value	Key determinants of HIV prevalence (in order of relevance)				
0-4%	All 14 countries in Figure 1	11162	P_{FBB}	0.3646	<0.0001	1. Population size of Brothel-based FSWs (P_{FBB}) 2. Population size of Non-brothel based FSW (P_{FNB}) 3. Number of partners of Females 2+ partners (C_{CTS}^{TS}) 4. Population size of female 2+ (P_{FTS}) 5. Proportion of female 2+ sexual partnerships formed with clients FSWs (ξ) 6. Size of the group of clients to brothel-based FSWs (C_{FBB}^C) 7. Transmission probability from male to female (β_{mf})				
			P_{FNB}	0.3265	<0.0001					
			C_{CTS}^{TS}	0.2431	<0.0001					
			$1/\alpha_{NB}$	-0.1964	<0.0001					
			P_{FTS}	0.1859	<0.0001					
			ξ	0.1762	<0.0001					
			$1/\alpha_{BB}$	-0.1701	<0.0001					
			C_{FBB}^C	0.1342	<0.0001					
			β_{fm}	0.1015	<0.0001					
			β_{mf}	-0.1011	<0.0001					
			C_{FNB}^C	-0.099	<0.0001					
			f_{FBB}	-0.089	<0.0001					
			f_{FNB}	0.0878	<0.0001					
f_{FTS}	-0.07	<0.0001								
0-2%	12 countries: Niger Senegal Ghana Liberia Birkinaso Sierra Leone Benin Mali Gambia Guinea Togo Core d'Ivoire	2225	P_{FNB}	0.3063	<0.0001	1. Population size of non-brothel-based FSWs (P_{FNB}) 2. Population size of Brothel based FSW (P_{FBB}) 3. Number of partners of Females 2+ partners (C_{CTS}^{TS}) 4. Proportion of female 2+ sexual partnerships formed with clients FSWs (ξ) 5. Transmission probability from male to female (β_{mf})				
			P_{FBB}	0.2981	<0.0001					
			C_{CTS}^{TS}	0.1578	<0.0001					
			$1/\alpha_{NB}$	-0.1248	<0.0001					
			ξ	0.1066	<0.0001					
			β_{fm}	0.1041	<0.0001					
			$1/\alpha_{BB}$	-0.1036	<0.0001					
			C_{FBB}^C	0.0783	0.0002					
			β_{mf}	-0.0691	0.0012					
			P_{FTS}	0.0648	0.0023					
			$1/\varphi_{BB}$	-0.0503	0.0181					
			2-3%	1 countries: Cameroon	2317		$1/\alpha_{NB}$	-0.0797	0.0001	1. Population size of non-brothel-based FSWs (P_{FNB}) 2. Population size of Brothel based FSW (P_{FBB}) 3. Number of partners of Females 2+ partners (C_{CTS}^{TS}) 4. Condom use among non-brothel based FSWs (f_{FNB})
							P_{FNB}	0.062	0.003	
P_{FBB}	0.0588	0.0048								
C_{CTS}^{TS}	0.045	0.0308								
f_{FNB}	0.0466	0.0323								
3-4%	1 country: Nigeria	2402	P_{FBB}	0.0467	0.0225	1. Population size of Brothel-based FSWs (P_{FBB}) 2. Population size of Non-brothel based FSW (P_{FNB})				
			P_{FNB}	0.0391	0.0504					