

Quantifying the success of measles vaccination campaigns in the Rohingya refugee camps

Taylor Chin^{a,b}, Caroline O. Buckee^b, and Ayesha S. Mahmud^{c,*}

^a*Department of Population Health Sciences, Harvard Graduate School of Arts and Sciences, Cambridge, Massachusetts USA*

^b*Department of Epidemiology, Harvard T. H. Chan School of Public Health, Boston, Massachusetts USA*

^c*Department of Demography, University of California, Berkeley, California USA*

* *Corresponding author: Ayesha S. Mahmud, mahmuda@berkeley.edu*

October 2, 2019

Abstract

In the wake of the Rohingya population's mass migration from Myanmar, one of the world's largest refugee settlements was constructed in Cox's Bazar, Bangladesh to accommodate nearly 900,000 new refugees. Refugee populations are particularly vulnerable to infectious disease outbreaks due to many population and environmental factors. A large measles outbreak, with over 2,500 cases, occurred among the Rohingya population between September and December 2017. Here, we estimate key epidemiological parameters and use a dynamic mathematical model of measles transmission to evaluate the effectiveness of the reactive vaccination campaigns in the refugee camps. We also estimate the potential for subsequent outbreaks under different vaccination coverage scenarios. Our modeling results highlight the success of the vaccination campaigns in rapidly curbing transmission and emphasize the public health importance of maintaining high levels of vaccination in this population, where high birth rates and historically low vaccination coverage rates create suitable conditions for future measles outbreaks.

Keywords: measles; vaccination; mathematical modeling; Rohingya; Bangladesh

1 Background

Since violence in Myanmar intensified in August 2017, nearly 900,000 Rohingya refugees have migrated from the Rakhine State of Myanmar and settled in refugee settlements in Cox's Bazar, Bangladesh [1]. Mass population displacement has been connected to adverse public health outcomes due to a plethora of risk factors, including heightened insecurity, reduced healthcare access, and inadequate living conditions [2]. Despite global gains in reducing the burden of vaccine-preventable infectious diseases [3], low vaccination coverage rates and overcrowding conditions in refugee camps often give rise to large-scale outbreaks in these settings [4–8] .

Given the crowded conditions in the refugee camps and the low rates of measles immunization among the Rohingya population, a large measles outbreak broke out in the Rohingya refugee camps in Cox's Bazar in late 2017, with over 2,500 cumulative suspected cases of measles reported from September to December 2017 [9–11]. Measles is a highly contagious respiratory infection caused by a paramyxovirus [12]. Transmission occurs through respiratory droplets or direct contact with secretions from the nose or throat of infected individuals [13]. Two vaccination campaigns were conducted in response to the outbreak; the first campaign ran from September 16, 2017 to October 4, 2017 and delivered the measles and rubella (MR) vaccine to 135,519 children aged 6 months to 15 years old [14]. A second

36 vaccination campaign ran from November 18, 2017 to December 2, 2017 and vaccinated 323,940 children in the same
37 age group [15].

38 We first evaluate the success of these vaccination campaigns in curbing the measles outbreak in the camps, by
39 quantifying changes in the effective reproductive number (R_e) and estimating the number of cases averted. Our
40 results highlight the success of the reactive vaccination campaigns—a remarkable public health achievement given
41 the very low rates of prior immunization among the Rohingya population.

42 We find that although these campaigns achieved high coverage, future measles outbreaks are still likely. First, the
43 Rohingya population has historically low vaccination coverage rates; a survey conducted in March 2018 found that
44 42.9% of children under the age of four had not received even a single dose of an injectable vaccine in Myanmar, and
45 only 2.8% of them had received five or more doses [16]. Second, the birth rate among the refugee population is high,
46 which rapidly replenishes the susceptible population. UNICEF estimates that approximately 60 Rohingya babies
47 were born in Cox’s Bazar each day in the nine months following the initial wave of migration in August 2017 [17].
48 We use a mathematical model to estimate the potential for subsequent measles outbreaks under different vaccination
49 coverage scenarios. Our findings have important public health implications, as greater understanding of the dynamics
50 of measles in Cox’s Bazar can help inform future resource prioritization and vaccination targets.

51 2 Methods

52 Daily case data was obtained from the World Health Organization’s (WHO) reported cases of measles and rubella in
53 Cox’s Bazar from September 6, 2017 to November 25, 2017 [9]. The data include 1,708 confirmed and suspected cases
54 of measles and rubella during this time period. All suspected cases are included in this analysis given the disease’s
55 characteristic rash [12], which facilitates syndromic reporting of measles. During an early blood sampling of 89
56 suspected cases of measles during the outbreak, only 1% of samples tested positive for rubella-specific immunoglobulin
57 M (IgM) [9]. The suspected cases are therefore assumed to be measles rather than rubella. We also assume that
58 all suspected cases occurred among the refugee population given the WHO’s finding that only 1% of cases occurred
59 among the host community population [9].

60 2.1 Estimation of R_e

61 We first estimated the daily effective reproductive number for the measles outbreak, in order to estimate the basic
62 reproductive number—a key epidemiological parameter. The basic reproductive number is defined as the expected
63 number of secondary cases from a typical infectious case in a completely susceptible host population [18]. The
64 reproductive number quantifies the transmissibility of an infection, thereby informing key attributes such as the herd
65 immunity threshold.

66 We estimated the effective reproductive number at time t using the approach developed by Wallinga and Teunis
67 [19], where knowledge of the serial interval distribution and incident cases is used in a likelihood-based estimation
68 procedure that considers pairs of cases. The serial interval distribution of measles used in this analysis was based on
69 a meta-analysis of existing studies of measles, and was assumed to be normally distributed with a mean of 11.9 days
70 and standard deviation of 2.6 days [20]. Table 1 reports all parameters used in this analysis and their sources. The
71 *EpiEstim* package in *R* was used to estimate the daily effective reproductive number over the course of the outbreak.
72 The 95% credible intervals were estimated using 1,000 simulations and 14-day time windows to increase precision in
73 estimates of the daily effective reproductive number [21].

74 2.2 Mechanistic Measles Model

75 Based on our estimated R_e , we estimated the basic reproductive number, R_0 , in order to simulate the dynamics
76 of measles using a mechanistic transmission model. To account for uncertainty at the start of outbreak, we used a
77 range of effective reproductive numbers, R_e to estimate R_0 according to the relationship $R_e = R_0 * s_0$, where s_0 is

Table 1: Summary of Input Parameters

Parameter	Value/Distribution	Notes	Source
Estimation of R_e			
Measles serial interval distribution	$N(11.9, 2.6^2)$	An estimated serial interval distribution reported from a household transmission study from Providence, R.I. by Chapin (1925)	Vink, Bootsma, and Wallinga [20]
Susceptible population at start of 2017 outbreak (%), s_0	Triangle(0.05,0.25,0.15)	Given the low vaccination rates in Myanmar [16], we assumed that most Rohingya adults were already immune to measles due to a resultant low average age of first infection. This assumption seems reasonable given that 83% of suspected cases were among children < 5 years old, and 96% of suspected cases were among children < 15 years old during the 2017 outbreak [9]. Approximately 50% of the Rohingya population in Cox's Bazar is < 15 years old [16,22]. 72% of measles cases in the 2017 outbreak as of November 18, 2017 had no history of measles vaccination [9].	Bhatia <i>et al.</i> [16], WHO [9], MSF [22]
Mechanistic Measles Model			
Basic reproductive number, R_0	Gamma(shape=16.2, rate=1.2)	Fit gamma distribution to histogram of R_0 values, which were estimated in the analysis using the relationship $R_e = R_0 * s_0$	Estimated in analysis
Rohingya population size, December 2017	579,661	The total influx of Rohingya into Cox's Bazar from August 25, 2017 to December 5, 2017, excluding those that settled in the host community	WHO [23]
Rohingya population size, April 2019	870,534	The number of Rohingya refugees identified in the refugee camps as of April 2019, excluding those registered before August 31, 2017	ISCG [1]
Birth rate (/10,000/day), μ	1.45	Save the Children estimated that 48,000 Rohingya children would be born in Cox's Bazar in 2018 [24], which is in line with UNFPA's estimate from December 2017 that 10,000 Rohingya women would give birth from January to March 2018 [25].	Save the Children [24], UNFPA [25]
Death rate (/10,000/day), μ	1.45	Assumed to be the same as the birth rate	Assumption
Recovery rate (days ⁻¹), γ	0.11	1/average duration of infectiousness (9 days)	McLean <i>et al.</i> [26]
Transmission coefficient (days ⁻¹), β	—	$R_0 / (\text{average duration of infectiousness} * \text{population size})$	Estimated in analysis
Susceptible population at start of next outbreak (%), s_U	Uniform(0.05,0.15)	<ul style="list-style-type: none"> • 349,603 children < 15 years old were targeted for second vaccination campaign [9]. • If 135,519 children were vaccinated in the first round and 323,940 in the second round, 38.8% (135,519/349,603) and 92.7% (323,940/349,603) of children were vaccinated in these campaigns, respectively • Use binomial calculations to estimate probability of child receiving 0, 1, and 2 MR doses as 4.5%, 59.6% and 35.9%, respectively • If 4.5% of children received 0 doses, approximately 15,715 children were not vaccinated by the end of the vaccination campaigns • Add estimated 72,000 births (48,000*1.5) that have occurred since the vaccination campaigns; annual estimate of 48,000 is the same estimate from Save the Children [24] that informs the birth rate • Estimate current proportion of children susceptible as (15,715 + 72,000)/870,534 = 0.10 to inform the middle of the uniform distribution range 	Assumption

78 the fraction of the population susceptible at the start of the outbreak and R_e is the effective reproductive number
79 at the start of the epidemic. The R_e range was chosen based on when the epidemic curve suggests the measles
80 outbreak took off. Effective reproductive numbers between 1.4 and 3.1 correspond to values calculated using 14-day
81 intervals that start between days 6 and 16 into the outbreak. Here, we assume mass-action and that the population
82 is well-mixed [18]. Latin Hypercube Sampling (LHS) was used to capture uncertainty around parameter estimates by
83 efficiently sampling from the joint distribution of parameter inputs [27]. Using this method, 1,000 values of s_0 and R_e
84 were sampled from their assumed probability distributions (Table 1). A gamma distribution was fit to the resultant
85 1,000 estimated values of R_0 . The median and 2.5% and 97.5% percentile of the reproductive number are reported,
86 and a histogram of estimated values is shown to reflect estimates based on the LHS procedure (Supplementary Figure
87 1).

88 A deterministic, Susceptible-Infectious-Recovered (SIR) model, which incorporates birth and death rates, was
89 used to model the size of measles outbreaks in the refugee camps under the scenario in which reactive vaccination
90 had not been implemented in 2017 and under different vaccination scenarios for the next outbreak (Figure 1). The
91 model assumes random mixing in the population and does not consider age-dependent heterogeneity in transmission

92 that occurs in other settings [28].

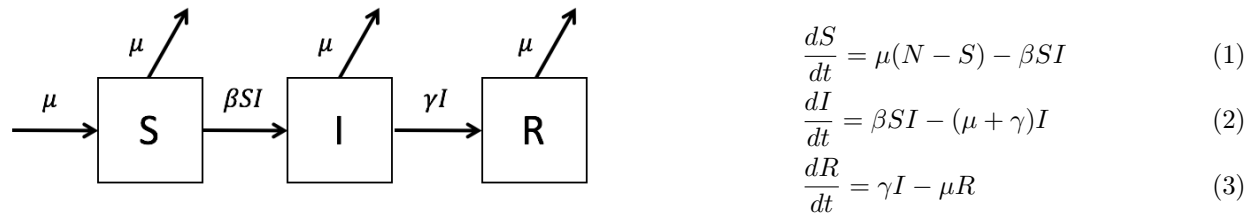


Figure 1: Schematic representation of disease states in a model of a measles outbreak in Cox's Bazar. Individuals are either susceptible to measles (S), infectious with measles (I), or recovered from and immune to measles infection (R), either due natural immunity from infection or prior vaccination. β represents the transmission coefficient, γ is the recovery rate, and μ is the birth and death rate. The model starts with one infected (and infectious) measles case (*i.e.*, $I(0) = 1$). The number of recovered individuals at time = 0 was calculated as $R(0) = N - S(0) - I(0)$. The model tracks the number of individuals that move between the compartments each day and is run for one year using the ordinary differential equations 1-3.

93 The transmission coefficient, β , was estimated according to the relationship $\beta = R_0/ND$, where N is the total
 94 population (*i.e.*, $S + I + R$) and D is the average duration of infectiousness (Table 1). A measles-specific death
 95 rate was not included in the model since it was assumed to be negligible, as there were only 3 measles-attributed
 96 deaths from August 25, 2017 to December 9, 2017 [15,29]. Immunity from both natural infection and vaccination was
 97 assumed to be life-long. Two doses of the MMR vaccine have been shown to confer immunity for at least 20 years [30].
 98 The model uses one infected case as the initial value for the number of individuals in the infected compartment, $I(0)$.
 99 The initial value for the recovered compartment was calculated as $R(0) = N - S(0) - I(0)$.

100 2.2.1 Estimating the Impact of Vaccination on the 2017 Outbreak

101 The population included in this analysis was the 579,661 Rohingya that migrated to Cox's Bazar after August 25,
 102 2017 and settled in the refugee camps [23]. The proportion of the population that was estimated to be susceptible
 103 at the start of the outbreak, s_0 , was estimated by considering prior vaccination rates and the age distribution of the
 104 Rohingya population (Table 1). The model runs for 365 days to reflect one year following the start of the outbreak.
 105 LHS was used to take into account uncertainty in parameter estimates; 1,000 values for each parameter were sampled
 106 from the assumed parameter probability distributions (Table 1). A histogram of values for the estimated final size of
 107 the 2017 epidemic in the absence of vaccination is shown to reflect uncertainty in estimates (Supplementary Figure
 108 2).

109 2.2.2 Modeling the Impact of Vaccination on the Next Outbreak

To model the impact of vaccination on subsequent measles epidemics, we assumed a total Rohingya population size
 of 870,534 as of April 2019 [1]. The SIR model described above (Figure 1) was used to estimate the size of subsequent
 epidemics based on varying assumptions for vaccination coverage rates. The model incorporates infection rates during
 the 2017 outbreak and the vaccination coverage rates of the campaigns conducted in 2017 by reducing the proportion
 of the population that is susceptible (s) through the formula previously described by Gastañaduy *et al.* (2018) [31]

$$s = V_C(1 - V_E) + s_U(1 - V_C) \quad (4)$$

110 where V_C is ≥ 1 dose coverage of the Measles, Mumps, and Rubella (MMR) vaccine, V_E is the median effectiveness
 111 of 1 dose of MMR vaccine (94%) [26], and s_U is the proportion of unvaccinated individuals who are susceptible. This
 112 approach assumes vaccination is implemented as one-time interventions between the end of the 2017 outbreak and

113 now. Table 1 reports all parameters and calculations used as inputs in the mathematical model. LHS was again used
114 to take into account uncertainty in parameter estimates.

115 For this analysis, the SIR model was run for two years to estimate the impact of vaccination on the next outbreak.
116 The cumulative number of cases over two years was calculated for vaccination coverage rates of 10%, 50%, and 90% of
117 the at-risk population. Cumulative cases were estimated as the cumulative proportion of the population that moves
118 into the infectious compartment in the SIR framework. Distributions of our estimates for the cumulative number of
119 cases at two years under the different vaccination rate scenarios are presented. To contrast these results with the
120 scenario of the next measles outbreak in the absence of vaccination, the same model used to estimate the size of the
121 2017 outbreak in the absence of vaccination was used with two changes: 1) the total population size was increased to
122 870,534 [1], and 2) the proportion of the population that was assumed to be susceptible at the start of the outbreak
123 was estimated as s_u instead of s_0 (Table 1) to incorporate the two vaccination campaigns conducted in 2017 and
124 births that have occurred since December 2017.

125 3 Results

126 3.1 Quantifying changes to R_e

127 During the 2017 measles outbreak in Cox’s Bazar, the total number of measles cases from September 6, 2017 to
128 November 25, 2017 was 1,708. The number of reported measles cases reached a peak of 86 incident cases on November
129 18, 2017, followed by a decline in cases (Figure 2A). Current measles transmission appears to be ongoing but limited
130 in the refugee camps, with 323 suspected cases reported from January 1, 2019 to May 4, 2019 [32].

131 The daily effective reproductive number ranged from approximately 1.4 (2.5% percentile 1.1 to 97.5% percentile
132 1.7) at the end of the third week of the outbreak to a maximum of 4.3 (2.5% percentile 4.0 to 97.5% percentile 4.8)
133 at the end of the fifth week, or the week ending on October 10, 2017 (Figure 2B). The first measles vaccination
134 campaign conducted in response to the outbreak appears to have been highly successful in curbing the transmission
135 of measles, as the daily effective reproductive number declined shortly after the end of the two-week campaign. The
136 second vaccination campaign, meanwhile, was conducted starting in December, when the daily effective reproductive
137 number was already below 1. By the middle of the 11th week, or mid-November, the effective reproductive number
138 had already dipped below 1. After restricting the maximum estimated basic reproductive number to 20 based on the
139 ranges for R_0 commonly reported in the literature [33], the median basic reproductive number is estimated to be 13.7
140 with a standard deviation of 3.3 (Supplementary Figure 1).

141 3.2 Estimating the Impact of Vaccination on the 2017 Outbreak

142 If the two vaccination campaigns had not been implemented in response to the 2017 outbreak, our model estimates
143 a median final epidemic size of approximately 79,404 measles cases (standard deviation (sd) of 29,073). This result
144 reflects the high transmissibility of measles, and suggests that after one year from one infectious individual entering
145 the Rohingya population in September 2017, in the absence of interventions, almost all susceptible individuals—or
146 equivalently, approximately 14% of the total population—would have contracted measles. Considering that our model
147 therefore indicates a near 100% attack rate among the susceptible population, the fact that only approximately 2,500
148 cumulative cases occurred from September to the end of December 2017 is a testament to the tremendous success of the
149 vaccination campaigns that were implemented by the WHO, the Bangladesh Ministry of Health, Family and Welfare
150 (MoHFW), and their partners in response to the measles outbreak [9–11]. Our results suggest that nearly 77,000 cases
151 were averted as a result of the reactive vaccination campaigns conducted in late 2017 (Figure 3). The swift response
152 of WHO, the MoHFW, and partner organizations, considering the challenging circumstances of accommodating over
153 650,000 new arrivals by December 2017, is a remarkable public health achievement [34].

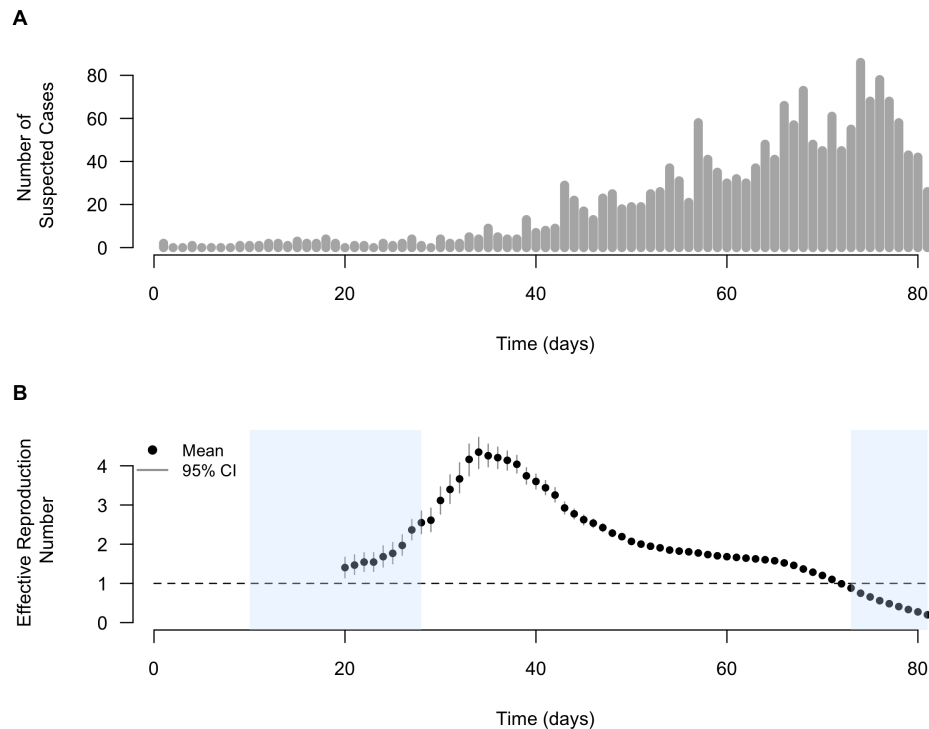


Figure 2: A) Confirmed and suspected measles and rubella cases in Cox's Bazar from September 6, 2017 to November 25, 2017. B) Estimated daily effective reproductive number of measles in Cox's Bazar in the 2017 outbreak using the Wallinga and Teunis method over sliding 14-day windows. Time scale is days since the start of the outbreak on September 6, 2017. Blue shaded areas indicate vaccination campaigns (first campaign from September 16, 2017 to October 4, 2017 and second campaign from November 18, 2017 to December 2, 2017). The 95% credible intervals were estimated using 1,000 simulations.

154 3.3 Modeling the Impact of Vaccination on the Next Outbreak

155 When our model is applied to the current population size under different vaccination scenarios, the model estimates
156 that the median number of measles cases after two years would range from approximately 74,500 cases if 90% of
157 the population is vaccinated to 90,000 cases under the scenario of a 10% vaccination coverage rate (Figure 4A).
158 These results contrast with the larger median estimate of approximately 93,700 cases, or 11% of the total Rohingya
159 population, predicted for the next measles outbreak in this setting under the scenario of no vaccination (Supplementary
160 Figure 3). Vaccination therefore has the potential to avert between approximately 4,000 and 19,000 cases over two
161 years depending on the coverage rate. Figure 4B shows estimates in terms of boxplots to reflect the uncertainty in
162 our model's results due to parameter uncertainty.

163 4 Discussion

164 Our analysis highlights the immense success of the two large-scale vaccination campaigns in averting measles cases
165 during the 2017 outbreak in Cox's Bazar and supports the importance of maintaining high vaccination coverage
166 rates in the population going forward. Our findings on the estimate of the basic reproductive number in this setting
167 (median = 13.7; sd = 3.3) are in line with previous estimates reported in the literature [33].

168 We find that nearly 77,000 cases were averted over the course of one year due to vaccination in the 2017 outbreak.
169 The daily effective reproductive number declined from its maximum value of 4.3 at the end of week 5 to below 1 by
170 the middle of week 11. When we apply our model to estimate the impact of vaccination on subsequent outbreaks,

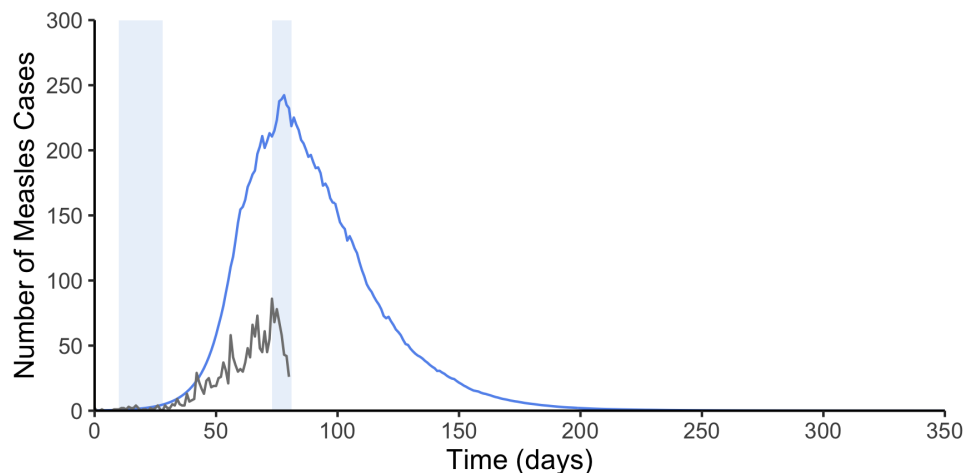


Figure 3: Confirmed and suspected measles and rubella cases in Cox’s Bazar from September 6, 2017 to November 25, 2017 shown in gray. Estimated median number of measles cases in the absence of vaccination over a one-year period beginning on September 6, 2017 shown in blue. The median is based on 1,000 parameter combinations using LHS. Light blue shaded areas indicate vaccination campaigns (first campaign from September 16, 2017 to October 4, 2017 and second campaign from November 18, 2017 to December 2, 2017).

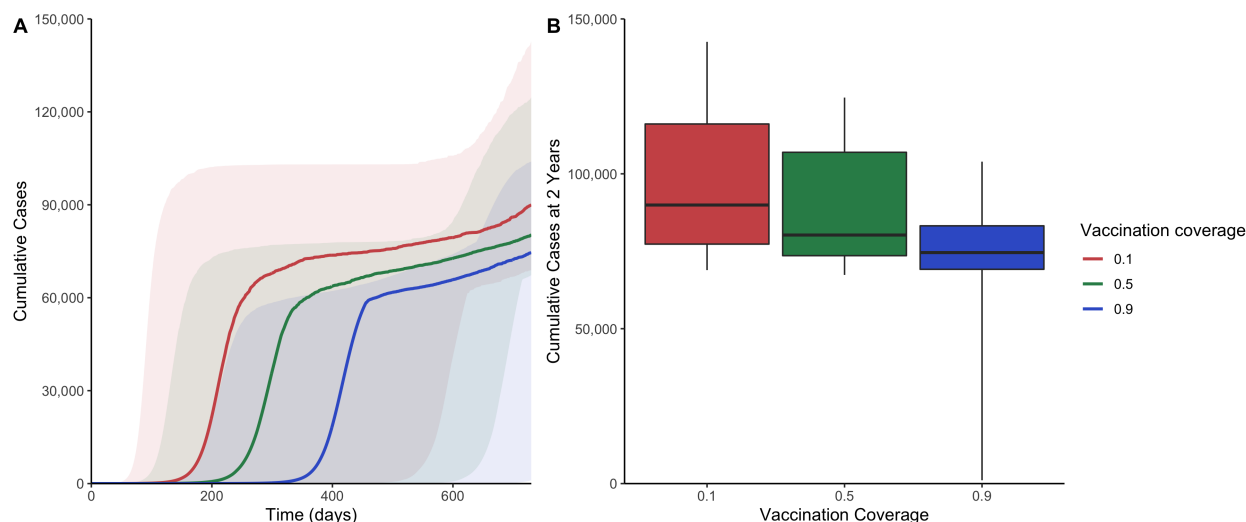


Figure 4: A) Cumulative number of measles cases over time under varying scenarios of vaccination coverage rates. Shaded areas represent the range between estimates’ 10% and 90% percentiles from LHS sampling of 1,000 parameter combinations B) Boxplots of the cumulative number of measles cases at 2 years (730 days) using 1,000 LHS parameter combinations under the same vaccination coverage rate scenarios. Maximum and minimum values represent 90% and 10% percentiles, respectively.

171 depending on the coverage rate in the population, vaccination could avert between 4,000 and 19,000 cases over two
 172 years. The near 100% attack rate found among susceptibles in the absence of vaccination reinforces the importance
 173 of maintaining vaccination as a key public health priority among the Rohingya community in Cox’s Bazar.

174 Our study has several important limitations. The estimate for the basic reproductive number may be biased due
 175 to two possible ways in which the serial interval distribution from the literature may overestimate the serial interval
 176 distribution in this specific setting. First, it is possible that other intervention measures such as contact tracing and

177 isolation of infectious cases were implemented during the outbreak, which would have the effect of shortening the
178 serial interval for such individuals. However, press articles or WHO reports do not mention these interventions, and
179 it may be reasonable to assume that these interventions were not widely used given their infeasibility in this setting.
180 Secondly, the contraction of the serial interval described by Kenah, Lipsitch, and Robins [35] in high transmission
181 settings is not considered in this analysis. Instead, a constant serial interval distribution is assumed. For these reasons,
182 the serial interval used in this analysis may represent an overestimation of the actual serial interval in this setting,
183 which would result in an overestimation of the basic reproductive number given the positive correlation between the
184 two measures. Future analyses could examine how the effective reproductive number at time t would change if a
185 hazard-based estimator described by Kenah, Lipsitch, and Robins [35] was instead used in order to address potential
186 serial interval contraction.

187 Second, reporting rates and how these rates changed over time are also not considered in this analysis. One
188 possible scenario is that identification of measles was worse at the start of the epidemic relative to later in the
189 epidemic, and that fewer measles cases were therefore reported in the early phase of the epidemic. If this were the
190 case, the initial case counts may underestimate the true extent of measles transmission at the start of the epidemic,
191 which would affect the calculation for the reproductive number. Assumptions about changes in the reporting rate
192 could be incorporated in future work, such that the reported daily cases are inflated by a different fraction across
193 time, for example using a method similar to that used by White *et al.* [36] in their investigation of the 2009 H1N1
194 pandemic .

195 Third, our results pertain to a specific outbreak among the Rohingya population in Cox's Bazar and may not
196 generalize to other populations. Importantly, our assumption of homogeneous mixing may not hold in other settings.

197 Despite these limitations, this analysis provides estimates for the transmissibility of measles in the setting of
198 Cox's Bazar as well as quantifies the impact of vaccination. Starting in December 2017, the WHO and its partners
199 implemented MR vaccination at border check points [37]. From February to December 2018, approximately 29,000
200 MR doses were delivered to children [38]. The WHO currently supports the Ministry of Health in routine measles
201 surveillance [39]. These efforts are highly commendable and should be recognized.

202 Importantly, however, our findings emphasize the necessity of maintaining ongoing surveillance and of consistently
203 implementing preventive interventions like vaccination. Recently, attention in the refugee camps has been focused
204 primarily on diarrheal diseases in Cox's Bazar [40]. At the same time, according to the WHO's Early Warning, Alert,
205 and Response System (EWARS) in Cox's Bazar, approximately 10 to 20 cases of suspected measles or rubella have
206 been reported to EWARS each week since the start of 2019, signaling ongoing measles transmission [41].

207 Against this backdrop of competing public health concerns, it will be important to sustain routine vaccination
208 of vaccine-preventable childhood infections like measles given the high birth rate in the camps and evidence that
209 measles transmission continues to linger. Estimates of the basic reproductive number and size of the next outbreak
210 from this analysis reinforce the public health importance of maintaining the high vaccination coverage rates that are
211 known to be necessary for preventing outbreaks of highly-transmissible infections such as measles.

212 Author Contributions

213 TC performed the data analyses and drafted the manuscript. COB and ASM designed the research. All authors
214 revised the manuscript and approved the final version.

215 Declaration of Interests

216 None

217 Funding Source

218 Research reported in this publication was supported by the National Institute Of General Medical Sciences under
219 Award Number U54GM088558. The content is solely the responsibility of the authors and does not necessarily
220 represent the official views of the National Institute of General Medical Sciences or the National Institutes of Health.
221 The funders had no role in study design, data collection and analysis, decision to publish, or preparation of the
222 manuscript

223 References

- 224 [1] Situation Report: Rohingya Refugee Crisis, Cox’s Bazar | 30 April 2019. Tech. Rep., Inter Sector Coordination
225 Group (2019). URL
226 https://reliefweb.int/sites/reliefweb.int/files/resources/sitrep_april_2019.pdf.
- 227 [2] Hammer, C. C., Brainard, J. & Hunter, P. R. Risk factors and risk factor cascades for communicable disease
228 outbreaks in complex humanitarian emergencies: a qualitative systematic review. *BMJ Global Health* **3**,
229 e000647 (2018).
- 230 [3] Greenwood, B. The contribution of vaccination to global health: past, present and future. *Philosophical*
231 *Transactions of the Royal Society B: Biological Sciences* **369** (2014).
- 232 [4] Goma Epidemiology Group. Public health impact of Rwandan refugee crisis: what happened in Goma, Zaire,
233 in July, 1994? *The Lancet* **345**, 339–344 (1995).
- 234 [5] Porter, J. D. H., Gastellu-Etchegorry, M., Navarre, I., Lungu, G. & Moren, A. Measles Outbreaks in the
235 Mozambican Refugee Camps in Malawi: The Continued Need for an Effective Vaccine. *International Journal*
236 *of Epidemiology* **19**, 1072–1077 (1990).
- 237 [6] Kouadio, I. K., Kamigaki, T. & Oshitani, H. Measles outbreaks in displaced populations: a review of
238 transmission, morbidity and mortality associated factors. *BMC International Health and Human Rights* **10**, 5
239 (2010).
- 240 [7] Golicha, Q. Cholera Outbreak in Dadaab Refugee Camp, Kenya — November 2015–June 2016. *MMWR.*
241 *Morbidity and Mortality Weekly Report* **67** (2018). URL
242 <https://www.cdc.gov/mmwr/volumes/67/wr/mm6734a4.htm>.
- 243 [8] Shannon, K. *et al.* Cholera prevention and control in refugee settings: Successes and continued challenges.
244 *PLOS Neglected Tropical Diseases* **13**, e0007347 (2019).
- 245 [9] Mortality and Morbidity Weekly Bulletin (MMWB) Cox’s Bazar, Bangladesh, Volume No 8: 03 December
246 2017. Tech. Rep., World Health Organization (2017). URL
247 <http://www.searo.who.int/bangladesh/mmwbvol8.pdf>.
- 248 [10] Early Warning, Alert and Response System (EWARS) Epidemiological Highlights, Week 52. Tech. Rep., World
249 Health Organization (2019). URL <http://www.searo.who.int/bangladesh/ewarsw522018.pdf>.
- 250 [11] UNICEF. Bangladesh steps up vaccination for new Rohingya arrivals as measles cases rise (2017). URL
251 [https://www.unicef.org/press-releases/
252 bangladesh-steps-vaccination-new-rohingya-arrivals-measles-cases-rise](https://www.unicef.org/press-releases/bangladesh-steps-vaccination-new-rohingya-arrivals-measles-cases-rise).
- 253 [12] Centers for Disease Control and Prevention. Pinkbook: Measles (2015). URL
254 <https://www.cdc.gov/vaccines/pubs/pinkbook/meas.html>.
- 255 [13] World Health Organization. Disease and epidemiology | Measles | Health topics. URL
256 <http://www.emro.who.int/health-topics/measles/disease-and-epidemiology.html>.
- 257 [14] Mortality and Morbidity Weekly Bulletin (MMWB) Cox’s Bazar, Bangladesh, Volume No 1: 15 October 2017.
258 Tech. Rep., World Health Organization (2017). URL
259 http://www.searo.who.int/bangladesh/mmwb_cxb_vol1_15oct2017_rev.pdf.
- 260 [15] Mortality and Morbidity Weekly Bulletin (MMWB) Cox’s Bazar, Bangladesh, Volume No 7: 26 November
261 2017. Tech. Rep., World Health Organization (2017). URL
262 <http://www.searo.who.int/bangladesh/mmwbvol7.pdf>.
- 263 [16] Bhatia, A. *et al.* The Rohingya in Cox’s Bazar: When the Stateless Seek Refuge. *Health and Human Rights*
264 **20**, 105–122 (2018).

- 265 [17] UNICEF. More than 60 Rohingya babies born in Bangladesh refugee camps every day (2018). URL
266 [https://www.unicef.org/press-releases/
267 more-60-rohingya-babies-born-bangladesh-refugee-camps-every-day-unicef](https://www.unicef.org/press-releases/more-60-rohingya-babies-born-bangladesh-refugee-camps-every-day-unicef).
- 268 [18] Gay, N. J. The Theory of Measles Elimination: Implications for the Design of Elimination Strategies. *The
269 Journal of Infectious Diseases* **189**, S27–S35 (2004).
- 270 [19] Wallinga, J. & Teunis, P. Different epidemic curves for severe acute respiratory syndrome reveal similar
271 impacts of control measures. *American Journal of Epidemiology* **160**, 509–516 (2004).
- 272 [20] Vink, M. A., Bootsma, M. C. J. & Wallinga, J. Serial Intervals of Respiratory Infectious Diseases: A
273 Systematic Review and Analysis. *American Journal of Epidemiology* **180**, 865–875 (2014).
- 274 [21] Cori, A. EpiEstim package. URL <https://www.rdocumentation.org/packages/EpiEstim/versions/1.1-2>.
- 275 [22] Guzek, J., Siddiqui, R., White, K., Van Leeuwen, C. & Onus, R. Health Survey in Kutupalong and Balukhali
276 Refugee Settlements, Cox’s Bazar, Bangladesh. Tech. Rep. (2017). URL
277 https://www.msf.org/sites/msf.org/files/coxs_bazar_healthsurveyreport_dec2017_final1.pdf.
- 278 [23] Situation Report: Rohingya Refugee Crisis, Cox’s Bazar | 05 December 2017. Tech. Rep., Inter Sector
279 Coordination Group (2017). URL [https://
280 //reliefweb.int/sites/reliefweb.int/files/resources/171205_iscg_sitrep_one_pager_final.pdf](https://reliefweb.int/sites/reliefweb.int/files/resources/171205_iscg_sitrep_one_pager_final.pdf).
- 281 [24] Save the Children. At Least 48,000 Rohingya Babies Set to be Born in Overcrowded Refugee Camps in
282 Bangladesh in 2018 (2018). URL [https://www.savethechildren.org/us/about-us/media-and-news/
283 2018-press-releases/at-least-48-000-rohingya-babies-set-to-be-born-in-overcrowded-re](https://www.savethechildren.org/us/about-us/media-and-news/2018-press-releases/at-least-48-000-rohingya-babies-set-to-be-born-in-overcrowded-re).
- 284 [25] Republic of Korea pledges US\$ 500,000 to scale up UNFPA’s response to the Rohingya refugee crisis in
285 Bangladesh (2017). URL
286 [http://bangladesh.unfpa.org/en/news/republic-korea-pledges-us-500000-scale-unfpa%E2%80%
287 99s-response-rohingya-refugee-crisis-bangladesh](http://bangladesh.unfpa.org/en/news/republic-korea-pledges-us-500000-scale-unfpa%E2%80%99s-response-rohingya-refugee-crisis-bangladesh).
- 288 [26] McLean, H. Q., Fiebelkorn, A. P., Temte, J. L. & Wallace, G. S. Prevention of Measles, Rubella, Congenital
289 Rubella Syndrome, and Mumps, 2013: Summary Recommendations of the Advisory Committee on
290 Immunization Practices (ACIP). *MMWR Recommendations and Reports* **62**, 1–34 (2013).
- 291 [27] Stein, M. Large Sample Properties of Simulations Using Latin Hypercube Sampling. *Technometrics* **29**,
292 143–151 (1987).
- 293 [28] Schenzle, D. An age-structured model of pre- and post-vaccination measles transmission. *IMA journal of
294 mathematics applied in medicine and biology* **1**, 169–191 (1984).
- 295 [29] Mortality and Morbidity Weekly Bulletin (MMWB), Cox’s Bazar, Bangladesh, Volume No 5: 12 November
296 2017. Tech. Rep., World Health Organization (2017). URL [http://www.searo.who.int/mediacentre/
297 emergencies/bangladesh-myanmar/mmwb-vol5-12november2017.pdf?ua=1](http://www.searo.who.int/mediacentre/emergencies/bangladesh-myanmar/mmwb-vol5-12november2017.pdf?ua=1).
- 298 [30] Kontio, M., Jokinen, S., Paunio, M., Peltola, H. & Davidkin, I. Waning antibody levels and avidity:
299 implications for MMR vaccine-induced protection. *The Journal of Infectious Diseases* **206**, 1542–1548 (2012).
- 300 [31] Gastañaduy, P. A. *et al.* Impact of Public Health Responses During a Measles Outbreak in an Amish
301 Community in Ohio: Modeling the Dynamics of Transmission. *American Journal of Epidemiology* **187**,
302 2002–2010 (2018).
- 303 [32] Health Sector Bulletin #9 Rohingya Crisis in Cox’s Bazar, Bangladesh. Tech. Rep., World Health Organization
304 (2019). URL <http://www.searo.who.int/bangladesh/health-sector-cxb-bangladesh-no9.pdf>.
- 305 [33] Guerra, F. M. *et al.* The basic reproduction number (R0) of measles: a systematic review. *The Lancet.
306 Infectious Diseases* **17**, e420–e428 (2017).

- 307 [34] Situation Report #08, Refugee Crisis from Myanmar to Bangladesh, October 19, 2017. Tech. Rep., World
308 Health Organization (2017). URL
309 http://www.searo.who.int/about/administration_structure/hse/20171026_searo_sitrep09.pdf?ua=1.
- 310 [35] Kenah, E., Lipsitch, M. & Robins, J. M. Generation interval contraction and epidemic data analysis.
311 *Mathematical biosciences* **213**, 71–79 (2008).
- 312 [36] White, L. F. *et al.* Estimation of the reproductive number and the serial interval in early phase of the 2009
313 influenza A/H1N1 pandemic in the USA. *Influenza and Other Respiratory Viruses* **3**, 267–276 (2009).
- 314 [37] Weekly Situation Report #7, Rohingya Refugees, 23 December 2017. Tech. Rep., World Health Organization
315 (2017). URL <http://www.searo.who.int/bangladesh/weeklysitrep07cxbban.pdf?ua=1>.
- 316 [38] Weekly Situation Report #57, Rohingya Refugees, 27 December 2018. Tech. Rep., World Health Organization
317 (2018). URL <http://www.searo.who.int/bangladesh/weeklysitrep57cxbban.pdf>.
- 318 [39] Bi-Weekly Situation Report #10, Rohingya Refugees, 23 May 2019. Tech. Rep., World Health Organization
319 (2019). URL <http://www.searo.who.int/bangladesh/bi-weeklysitrep10.pdf?ua=1&ua=1>.
- 320 [40] Rohingya Crisis in Cox’s Bazar District, Bangladesh: Health Sector Bulletin #9. Tech. Rep., World Health
321 Organization (2019). URL
322 <http://www.searo.who.int/bangladesh/health-sector-cxb-bangladesh-no9.pdf>.
- 323 [41] Epidemiological Highlights, Week 16, 2019. Tech. Rep., World Health Organization (2019). URL
324 <http://www.searo.who.int/bangladesh/ewarsw162019.pdf>.

325 **Supplementary Material**

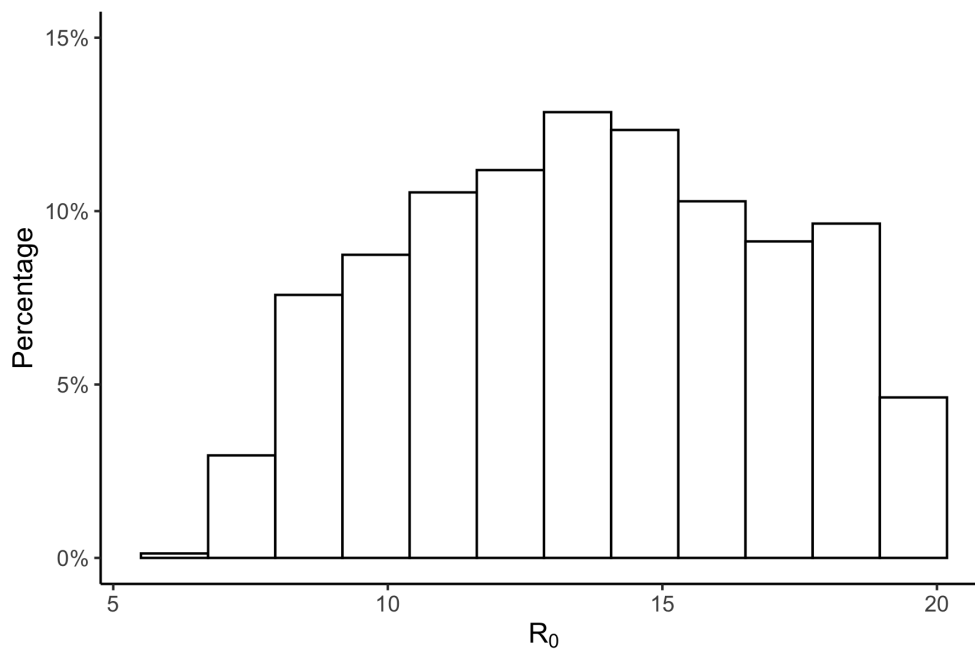


Figure 1: Histogram of estimated R_0 values using LHS with 1,000 parameter combinations, where the maximum has been restricted to 20. Summary statistics: 13.67 (mean), 13.69 (median), 7.76 (2.5%) and 19.49 (97.5%)

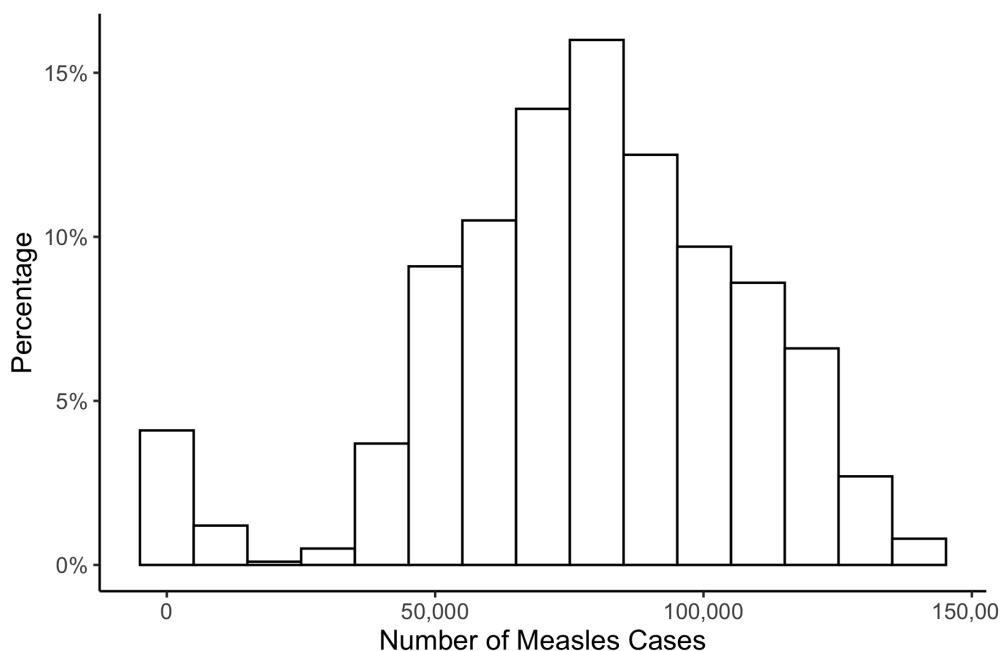


Figure 2: Histogram of estimated size of 2017 measles epidemic if vaccination had not occurred using LHS with 1,000 parameter combinations. Summary statistics: 78,151 (mean), 79,404 (median), 609 (2.5%), 127,147 (97.5%)

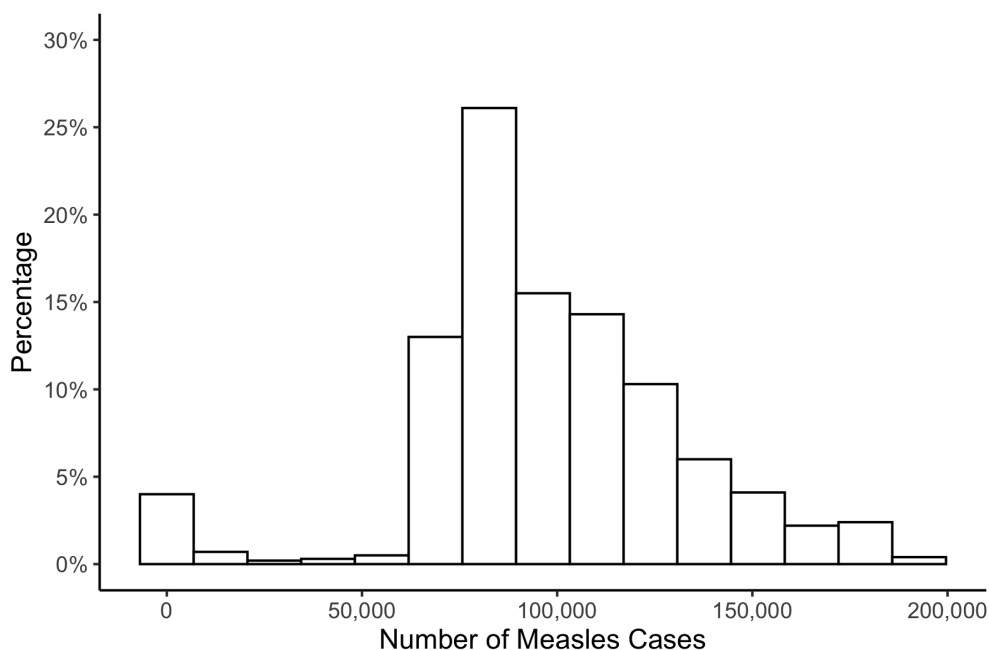


Figure 3: Histogram of estimated size of next measles epidemic if vaccination does not occur using LHS with 1,000 parameter combinations. Summary statistics: 97,637 (mean), 93,718 (median), 47 (2.5%), 173,397 (97.5%)