

Does *in utero* HIV-exposure influence infant development and immune outcomes? Findings from a pilot study in Pretoria, South Africa.

Marina White¹, Ute D Feucht^{2,3,4}, Eleanor Duffley¹, Felicia Molokoane^{3,4,5}, Chrisna Durandt^{6,7}, Edana Cassol¹, Theresa Rossouw^{7†}, *Kristin L Connor^{1†}

¹Health Sciences, Carleton University, Ottawa, Ontario, Canada;

²Paediatrics, University of Pretoria, Pretoria, Gauteng, South Africa;

³Research Centre for Maternal, Fetal, Newborn & Child Health Care Strategies, University of Pretoria, Pretoria, Gauteng, South Africa;

⁴Maternal and Infant Health Care Strategies Unit, South African Medical Council, Pretoria, Gauteng, South Africa;

⁵Obstetrics and Gynaecology, University of Pretoria, Pretoria, Gauteng, South Africa;

⁶South African Medical Research Council Extramural Unit for Stem Cell Research and Therapy, University of Pretoria, Pretoria, Gauteng, South Africa;

⁷Department of Immunology, University of Pretoria, Pretoria, Gauteng, South Africa

†Senior author

*Correspondence: kristin.connor@carleton.ca (KLC); Tel.: +1 613-520-2600 ext. 4202

Abstract

HIV-infected infants show altered growth, brain development, and immune function. Yet, it remains unclear how detrimental fetal exposure to maternal HIV infection is to the development of the uninfected infant. A pilot study was conducted at Kalafong Hospital in Pretoria, South Africa, to better understand how maternal HIV infection influences infant outcomes. We hypothesised that *in utero* HIV-exposed, uninfected (HEU) infants would have poorer postnatal development and altered innate immune composition compared to HIV-unexposed, uninfected infants (HUU). Infant growth, neurodevelopment (Guide for Monitoring Child Development [GMCD]) and levels of monocyte subsets (CD14, CD16, and CCR2 expression [flow cytometry]) were measured in infants at birth and 12-weeks. HEU infants had lower head circumference and elevated CCR2+ (% and median fluorescence intensity) on monocytes at birth compared to HUU. Most infants met GMCD milestones at 1-3 and 3-5 months. Our findings that HEU infants had reduced head circumference and increased levels of migratory monocytes at birth, which has been associated with poor motor and cognitive outcomes, is consistent with our motor results within 5 months of age. Elevated levels of migratory monocytes may initiate pro-inflammatory pathways that target the brain, impacting neurodevelopment and lifelong health.

Keywords: HIV, neurodevelopment, growth, inflammation

Introduction

Maternal HIV infection profoundly affects maternal physiology and pregnancy outcomes. Annually, ~1.3 million women living with HIV become pregnant (1,2), and HIV infection in pregnancy is associated with increased risk of experiencing an adverse pregnancy outcome (3) including preterm premature rupture of membranes, preterm birth, urinary tract infection, post-partum sepsis and infection, and maternal mortality (4,5). Importantly, pregnancy and the postpartum period are two key times when HIV exposure may also have lasting impact on the fetus and infant. For example, fundamental structures, such as the brain, undergo rapid development *in utero*, and are thus vulnerable to infectious challenges such as HIV and antiretroviral therapy (ART) (6). Infants exposed to HIV *in utero* and during breastfeeding, who themselves become infected (HEI), have increased risk of intrauterine growth restriction (IUGR) (4,5), low birthweight (3), compromised immune function (7) and increased susceptibility to subsequent infections (8–10). These infants also show poorer motor, cognitive, language (11,12) and behavioural (12) outcomes compared to uninfected infants, and reduced

weight-for-length, length-for-age (13) and head circumference-for-age (14) in the first two years of life.

Importantly, global coverage of ART is increasing, reaching 80% of pregnant and breastfeeding women living with HIV in 2017 (15). As a result, mother-to-child HIV transmission is declining (16), and the population of HIV-exposed (*in utero* and during breastfeeding) but *uninfected* (HEU) infants is rising. This is true in South Africa, which faces the largest burden of HIV globally, with 19% of the world's HIV-infected population and nearly 4 million women of reproductive age who are living with HIV residing in South Africa (17). Nevertheless, this challenge has compelled the development of the largest HIV treatment programme worldwide (17), and in 2017, more than 95% of women who were pregnant and living with HIV in South Africa had access to ART (17). An estimated 30% of pregnant women in South Africa are HIV-infected and the rate of mother-to-child-transmission has been shown to be below 2% at birth (18). Despite this progress, the extent to which HIV exposure *in utero* or during breastfeeding, without infant infection,

influences infant development is poorly understood, and it remains unclear how development in HEU infants and children is shaped by inflammatory and metabolic abnormalities, intestinal dysbiosis (19) and persistently high risk of preterm birth (20) experienced by pregnant women living with HIV.

In HIV-infected adults, markers of monocyte activation and altered frequencies of monocyte subsets are among some of the best predictors of non-AIDS associated co-morbid diseases (21,22). These alterations have been implicated in the development of HIV-associated neurocognitive decline (22), and associate with increased neuro- and peripheral inflammation (23,24). Perinatally-infected HEI infants have increased monocyte activation between 4-15 weeks postpartum (25) relative to HEU infants, however, it is less clear whether the distribution of monocyte subsets and if their migratory potential is altered in HEU infants compared to HIV-unexposed, uninfected (HUU) infants, and if these alterations in HEU explain some of the adverse neurodevelopmental and growth outcomes in these infants.

We conducted a prospective cohort pilot study in Pretoria, South Africa, to determine if we could recruit women through our clinics to study the effects of HEU on growth, immune- and neuro-development in infants in early life, and to advance our knowledge on these exposure-outcome relationships. We hypothesised that poor growth and neurodevelopment and alterations in monocyte subsets would occur in HEU infants to a greater degree than HUU infants.

Methods

Study population

Women living with and without HIV were recruited after delivery (HIV-infected: n=32, HIV-uninfected: n=22) from the obstetric unit at Kalafong Provincial Tertiary Hospital and followed-up at one timepoint 12 weeks (range 8-16 weeks) postpartum (HIV-infected: n=21, HIV-uninfected: n=10). Study recruitment took place between June and December 2016. By March 2017, all follow up data had been collected. This study was approved by the Research Ethics Committee of the Faculty of Health Sciences of the University of Pretoria (185-2016) and the Carleton University Research Ethics Board (108870).

Recruitment and eligibility

Eligible women were identified by a research nurse after delivery. Exclusion criteria included caesarean section delivery, pregnancy complications (including gestational diabetes mellitus, multiple gestations), or antibiotic exposure perinatally.

Data collection

After delivery, a retrospective medical chart review was conducted to extract antenatal data. This included maternal characteristics (age at conception, parity, gravidity, smoking status, weight during pregnancy); medication use during pregnancy (including antibiotic exposure); illness/infections during pregnancy; and pregnancy outcomes (gestation length). All HIV-exposed infants underwent a blood draw at birth and again at 12 weeks for HIV testing. Blood from this routine draw was obtained within 4 days of birth and used to quantify the surface markers CD14, CD16 and CCR2 for monocyte subset identification (26).

At the postpartum follow up visit, mothers completed a questionnaire to assess breastfeeding practices, maternal lifestyle factors (including alcohol and smoking), and nutrition (including vitamin supplements, food security, and a 24-hour dietary recall). If any visits to clinics or hospitals occurred between birth and the follow up visit, the patient-retained child health record (Road to Health Booklet (27)) of the infant was examined to extract data on infant weight, history of illness and medication use.

Outcome measures

Primary outcomes of interest were infant anthropometry at birth and 12 weeks postpartum, weight gain from birth to 12 weeks postpartum, Apgar score at one and five minutes, developmental outcomes (Guide for Monitoring Child

Development (28)) at 12 weeks postpartum, and monocyte levels at birth and 12 weeks postpartum (CD14 expression on peripheral blood mononuclear cells [total monocytes]), CD16 expression on CD14⁺ monocytes (monocyte subsets) and CCR2 expression on all monocyte populations.

Infant anthropometry

Infant weight, length, and abdominal and head circumference were measured at birth and 12 weeks postpartum. Infant anthropometry were age- and sex-standardised using World Health Organization (WHO) growth standards (WHO Anthro software [v 3.2.2, January 2011]) (29). A brain weight estimate was calculated using an equation derived by the National Institute of Neurological and Communicative Disorders and Stroke's Collaborative Perinatal Project (30):

$$\text{brain weight (g)} = 0.037 \times \text{head circumference (cm)}^{2.57} \quad [30]$$

The brain weight estimate was used to calculate the infant brain-to-body weight ratio (BBR) (31):

$$\text{BBR} = 100 \times (\text{brain weight estimate [g]} / (\text{birth weight [g]})) \quad [31]$$

Weight gain from birth to 12 weeks postpartum (kg/day) was calculated using the weight of an infant at birth and follow up, and the days alive since birth at follow up:

$$\text{Weight gain } \left(\frac{\text{kg}}{\text{day}} \right) = \frac{\text{infant weight (12 wks [kg])} - \text{birthweight (kg)}}{\text{number of days alive}}$$

Infant monocyte subsets

Using the Gallios flow cytometer (3 laser, 10 colour configuration; Beckman Coulter, Miami, FL, USA), CD14 expression on PBMCs and CD16 and CCR2 expression (% and median fluorescence intensity [MFI]) on monocyte subsets was evaluated within four days of birth and at 12 weeks of age. The Kaluza V1.0 Acquisition software (Beckman Coulter, Miami, FL, USA) was used for data acquisition and post-acquisition data analysis was performed using Kaluza Analysis software (Version V3.1; Beckman Coulter, Miami, FL, USA). Flow-Check Pro fluorosphere were acquired daily prior to sample analysis to ensure optimal laser alignment and instrument performance. Single colour staining tubes (i.e. sample stained with individual monoclonal antibodies) were used to setup the protocol and calculate the colour compensation values. After setup and protocol/template verification, the instrument settings (voltages, gains, threshold and colour compensation settings) were kept the same throughout the study. The reagent list, including lasers and detectors used, and compensation matrix are presented in Supplementary tables S1 and S2, and the analysis approach and gating strategy are described in Supplementary figures S1 and S2. Classical (CD14⁺CD16⁻), intermediate (CD14⁺CD16⁺) and non-classical (CD14⁺CD16⁺) monocyte subsets were identified (32).

Infant neurodevelopment

The Guide for Monitoring Child Development (GMCD) (28) assesses expressive and receptive language, play activities, relating and response behaviour, and fine and large movement. The GMCD was developed for use in low- and middle-income countries to assess infants from 1 to 24 months postpartum, and involves the researcher asking the child's caregiver a series of open-ended questions relating to the child's development. An assessment for each infant was carried out once between 8-16 weeks postpartum. Infants who were 1-3 months of age (1 month to 2 months and 30 days) were assessed on milestones listed in the 1-3 month category, and infants who were 3-5 months (3 months+1 day to 4 months+30 days) were assessed for milestones listed in both the 1-3 and 3-5 month columns. Infants who were premature (<37 weeks) were age-corrected to term. The GMCD has been standardised and validated for international use in a sample of approximately 12,000 children from 4 diverse countries, namely South Africa, Argentina, India and Turkey (33).

Statistical analyses

Data were analysed using JMP 14.0. After data were tested for normality, univariate analysis (ANOVA, Kruskal-Wallis/Wilcoxon test for non-parametric data, or Welch's test normal data with unequal variance) and adjusted multiple regression models were used to compare: 1. infant anthropometry at birth and 12 weeks postpartum, 2. Apgar scores (one and five minutes), 3. levels of total monocytes, monocyte subsets and CCR2 expression assessed within 4 days of birth and at 12 weeks postpartum and 4. GMCD milestones attained at 12 weeks postpartum between HEU and HUU infants. Fisher's exact test was used to test associations between infant HIV-exposure status (HUU compared to HEU) and probability that an infant had attained all age-appropriate milestones for expressive

and receptive language, fine and large movement, relating and response behaviour and play activities (compared to not having attained all milestones).

Variables that are known or suspected confounders for our outcome measures were included as covariables in regression models, and through stepwise backward elimination, variables with $\alpha=0.20$ were retained in the final models (Supplementary Table S3). These included maternal age, education, weight at delivery, gravidity, parity, tobacco exposure, breastfeeding practices and self-reports of food (in)security, and infant gestational age, sex, and age (days) at follow up, and growth outcomes. CCR2 expression on total monocytes was considered a potential confounding variable, as CCR2 expression on CD14⁺ monocytes is a known contributor to neuro-inflammation and disorder in adults with HIV (24), and increased monocyte activation in infants has been associated with poorer neurodevelopmental outcomes in the first two years of life (34). Outliers were excluded where measurement error was clear, including for one participant for %CCR2-positive classical monocytes at birth, and one for %CCR2-positive non-classical monocytes at 12 weeks. With the pilot study's small sample size in consideration, we used an adjusted retrospective power (AdjP) calculation to determine the probability that the any effects of HEU on infant outcomes found during analyses were true with 80% certainty (AdjP>0.80). Data for infant outcomes below are presented as unadjusted means (SD) or medians (IQR) with adjusted retrospective power (AdjP) and p value from ANCOVA.

Infant outcomes for the GMCD were quantified in 2 ways. First, the total number of milestones attained by each infant, regardless of whether they were 1-3 or 3-5 months of age at follow up, was quantified for expressive and receptive language, play activities, relating and response behaviour, and fine and large movement. Next, the proportion of infants having attained all milestones (compared to not having attained all milestones) in their age category (1-3 months, or 3-5 months) for expressive and receptive language, fine and large movement, play activities and relating/response behaviour was quantified (35). Fisher's exact test was used to test differences in probability of HUU compared to HEU infants having attained all age-appropriate neurodevelopmental milestones at 1-3 months. Fisher's exact test was not performed to test differences in probability of HUU compared to HEU infants attaining milestones 3-5-month milestones, as only one of the 10 HUU infants who attended follow up (out of 22 recruited at birth) was 3-5 months of age.

To determine whether or not the study cohort at follow up was representative of the cohort at birth, standard least squares regression analysis compared all outcomes at birth for infants who were, versus were not, present at follow up, within the HEU and HUU infant groups. Data below that compares outcomes in infants who were lost to follow up to those who were not are presented as unadjusted means (SD) or medians (IQR) and p values.

Results

Cohort characteristics

At follow-up, 31 mother-infant dyads (HIV-infected: n=21, HIV-uninfected: n=10) of the 55 who had been recruited after delivery (HIV-infected: n=32, HIV-uninfected: n=22) were in attendance. There were no differences in maternal characteristics within our cohort (Table 1) or pregnancy outcomes such as gravidity, parity, or weight at delivery. All mothers identified as non-cigarette smokers, however, one woman reported consuming snuff.

Infant outcomes at birth

Birth outcomes, anthropometric measures and Apgar scores

Infant cohort characteristics are presented in Table 2. Preterm birth (<37 weeks) occurred in 5/54 (9.26%) pregnancies. Two preterm infants were HUU, born at 36 and 35 weeks, and three were HEU, with two born at 36 weeks, and one at 35 weeks (Table 2). HEU infants had lower head circumference-for-age z-scores (-1.58 ± 1.22 vs. -0.33 ± 1.19 , AdjP=0.92, p<0.001) and BBR (9.60 [8.88, 10.4] vs. 10.2 [9.77, 11.3], AdjP=0.43, p=0.04) at birth (Figure 1D, 1E, Table 2). BMI, length-for-age and weight-for-age z-scores at birth did not differ between HEU and HUU infants (Figure 1A-C, Table 2). There were no differences between HEU vs. HUU for Apgar scores at one minute or five minutes (Figure 1F, Table 2).

Table 1. Maternal cohort characteristics.

| | HIV-uninfected (n=22) | HIV-infected (n=32) | p value |
|---------------------------------|--------------------------|------------------------|---------|
| Maternal characteristics | | | |
| Weight at delivery (kg) | 60.1 (55.0, 80.3) | 60.4 (56.0, 69.0) | NS |
| Age (years) | 28.1 ± 7.31 | 30.8 ± 5.91 | NS |
| Gravidity (n) | 2.00 (1.50, 4.00) | 3.00 (2.00, 3.00) | NS |
| Parity (n) | 2.00 (1.00, 3.00) | 2.00 (1.00, 3.00) | NS |
| Level of education (n) | | | |
| Primary | 1 | 6 | |
| Secondary | 17 | 24 | |
| Post-secondary | 4 | 1 | |
| Not indicated | - | 1 | |
| Current ART (n) | | | |
| TDF, FTC, EFV | - | 28 | |
| AZT, 3TC, LPV/r | - | 1 | |
| None | | 3 | |

Data are means ± SD (ANOVA; normal distribution/equal variance) or median (IQR; Kruskal-Wallis/Wilcoxon test for non-parametric data, or Welch's test for normal data/unequal variance). NS= non-significant; TDF = Tenofovir; FTC = emtricitabine; EFV = efavirenz; AZT = azidothymidine; 3TC = lamivudine; LPV/r = ritonavir-boosted lopinavir.

Immune measures

There were no differences between HEU and HUU infants in the relative frequency of total monocytes (% CD14⁺ PBMC), monocyte subsets, or on CCR2 expression by total monocytes or mean monocyte subsets (Table 2). HEU infants had elevated %CCR2-positive classical monocytes (97.4 [95.2, 98.4] vs. 94.7 [92.2, 97.2], AdjP=0.71, p=0.01; Figure 2A, Table 2) at birth. No significant differences were observed for intermediate - or non-classical monocytes between the two groups at birth (Figure 2B, C). Median fluorescence intensity (MFI) is indicative of the level of cell surface expression and a significant higher CCR2 MFI were observed for classical (6.29 [5.59, 6.81] vs. 5.25 [4.49, 6.63], AdjP=0.50, p=0.03; Figure 2D) and intermediate (2.87 [2.34, 3.48] vs. 2.33 [2.16, 2.65], AdjP=0.46, p=0.03; Figure 2E) at birth in HEU infants when compared to HUU infants. No significant differences in CCR2 expression levels were observed in non-classical monocytes at birth in HEU compared to HUU infants (Figure 2F, Table 2).

Infant outcomes at 12 weeks postpartum

Anthropometric measures

In adjusted analyses, there were no differences between the age- and sex-standardised anthropometric measures of HEU and HUU infants at follow up, and no differences in weight gain from birth to 12 weeks postpartum (Figure 1A-F, Table 2).

Immune measures

There were no differences between HUU and HEU infants at 12 weeks postpartum for %CD14⁺ PMBCs, CCR2 expression by total monocytes, or classical, intermediate, or non-classical monocyte sub-population levels (Table 2). HEU infants had elevated %CCR2-positive intermediate monocytes compared to HUU infants at 12 weeks postpartum (56.2 ± 12.2 vs. 44.8 ± 23.1, AdjP=0.39 p=0.05; Figure 2B), but no differences for %CCR2 on classical or non-classical, or CCR2 MFI on all monocyte subsets were observed (Figure 2A, C, D-F, Table 2).

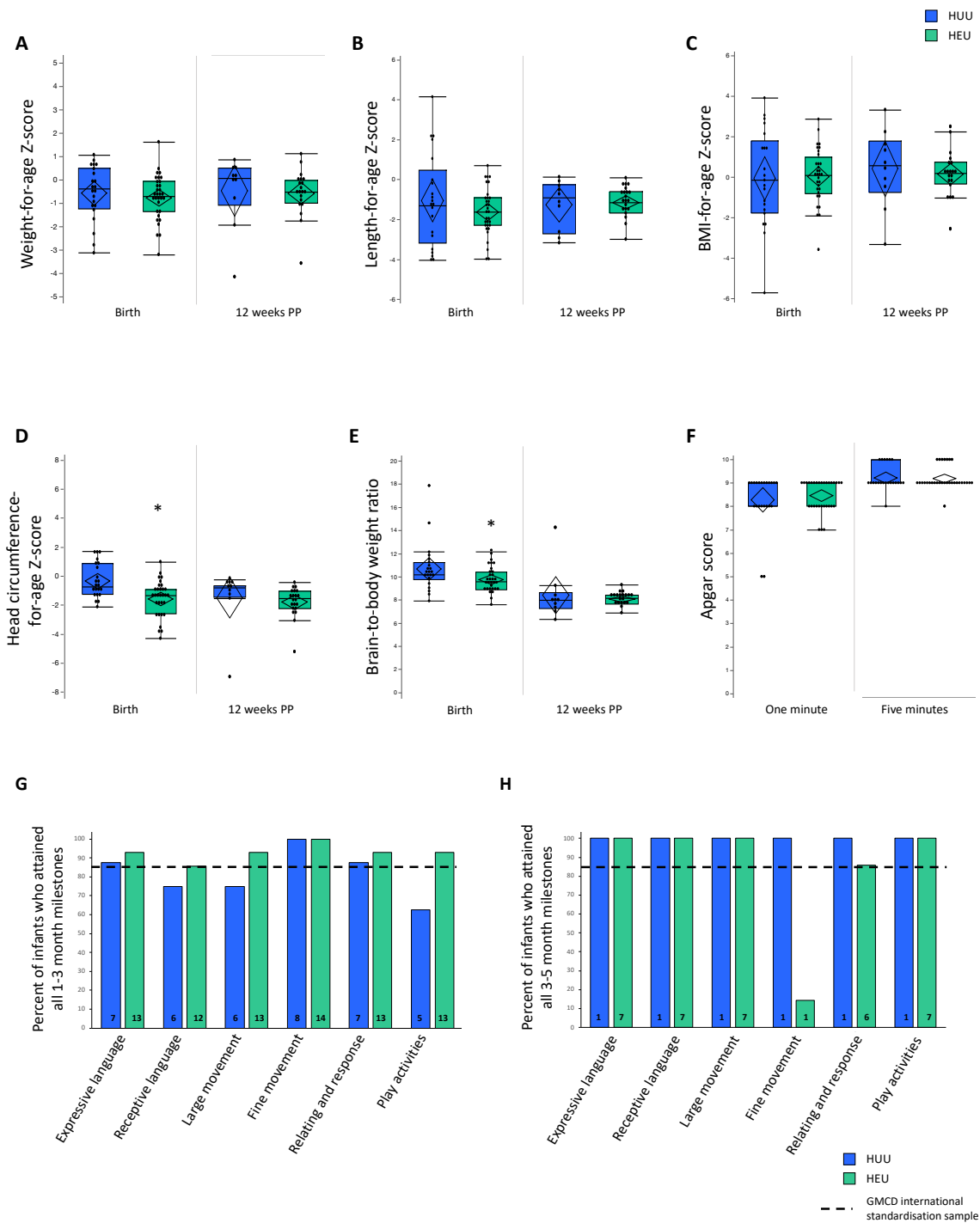
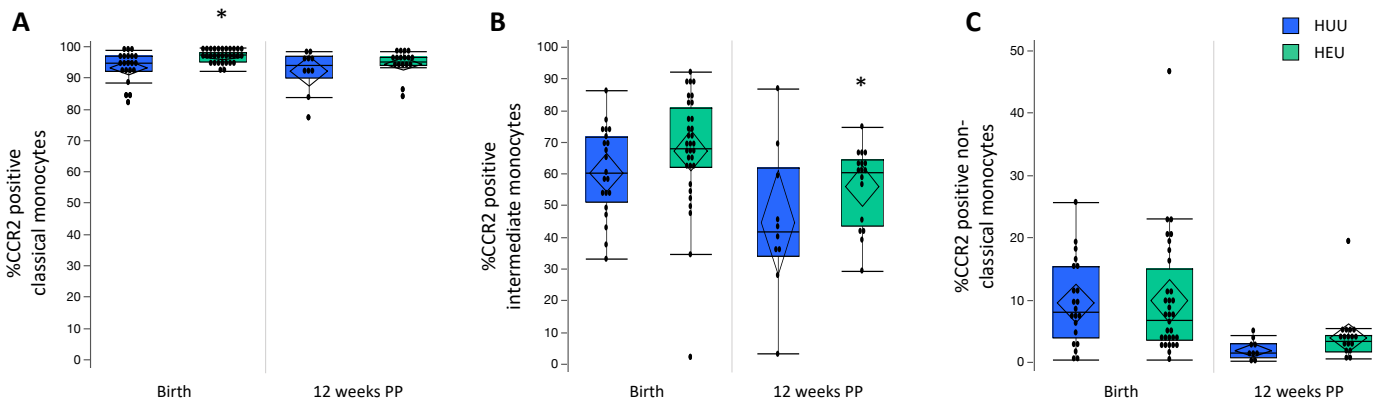


Figure 1. Effect of *in utero* HIV-exposure on Apgar, infant anthropometry and attainment of neurodevelopmental milestones. (A-E) Infant anthropometry at birth and 12 weeks and (F) Apgar at one and five minutes postpartum. (G) GMCD at 1-3 months. (H) GMCD at 3-5 months. HEU infants (n=32) have lower head circumference Z-score at birth (AdjP=, p=0.005) and BBR (AdjP=, p=0.04) compared to HUU infants (n=22). There were no other differences between HUU and HEU infants for anthropometry at birth or 12 weeks of age. There was no difference in the proportion of HUU (n=8) compared to HEU (n=14) infants who attained GMCD milestones at 1-3 months of age ([p>0.05], Fisher's exact), and no comparisons between HUU and HEU infants were made for 3-5 month milestones met, given that only 1/10 HUU infants at follow up (of the 22 recruited at birth) was 3-5 months of age. All infants met milestones when comparing to the GMCD standardisation sample, except for HUU infants for 1-3 month receptive language, large movement, and play activities milestones, and HEU infants for fine movement milestones at 3-5 months of age. Bar graphs are proportion (%) attaining all age-appropriate GMCD milestones. Outlier box plots are measured anthropometry and Apgar scores (quartiles, median lines and 95% confidence diamonds, *p<0.05 [ANCOVA]). GMCD = Guide for monitoring child development; HUU = HIV-unexposed, uninfected; HEU = HIV-exposed, uninfected; CI = confidence interval.

CCR2-positive (%) monocyte subpopulations at birth and 12 weeks postpartum



CCR2 median fluorescent intensity (MFI) on monocyte subpopulations at birth and 12 weeks postpartum

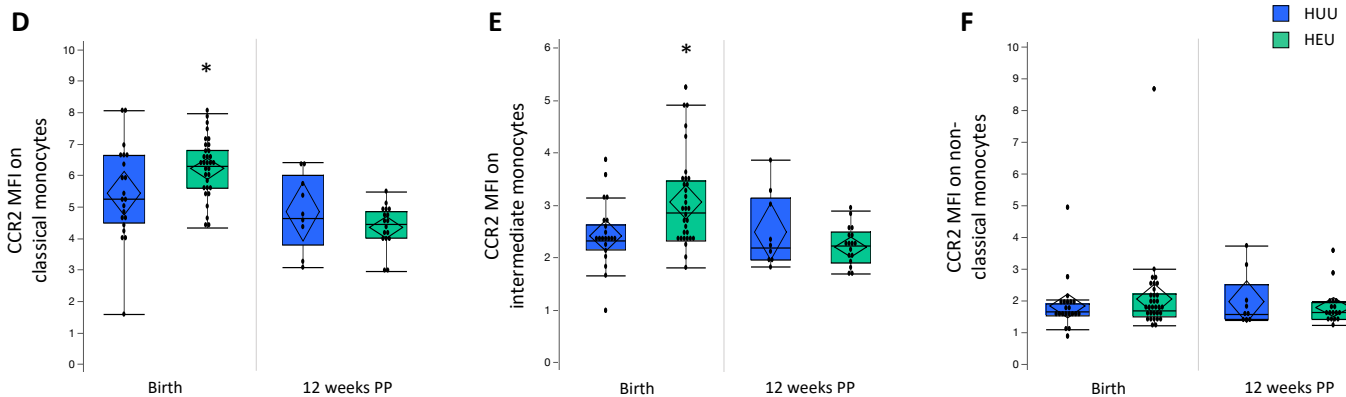


Figure 2. CCR2 expression by monocyte subpopulations within four days of birth and at 12 (± 4) weeks of age. HEU infants had elevated %CCR2-positive classical monocytes (A; AdjP=, $p=0.01$), and CCR2 expression (MFI) on classical (D; AdjP=, $p=0.03$) and intermediate (E; AdjP=, $p=0.03$) monocytes at birth (HUU $n=21$, HEU $n=32$). At 12 weeks postpartum (HUU $n=10$, HEU $n=17$), HEU infants had elevated %CCR2-positive intermediate monocytes compared to HUU infants (B; AdjP=, $p=0.05$). Data are measured as proportion of monocyte sub-populations expressing CCR2 (%) and the average (median) levels of expression per cell (MFI) on monocyte subpopulations. Outlier box plots are quartiles, median lines and 95% confidence diamonds, * $p < 0.05$ [ANCOVA]. HUU = HIV-unexposed, uninfected; HEU = HIV-exposed, uninfected; MFI = median fluorescent intensity (MFI); CI = confidence interval.

GMCD

The percentage of infants in each group (HUU compared to HEU) who had achieved all age-appropriate milestones at 1-3 or 3-5 months postpartum are presented (Figure 1). One HUU infant did not undergo a GMCD developmental assessment at follow up. 23/31 (74.19%) of infants aged 8-16 weeks had a 1-3 month GMCD assessment. Of these infants, 15/23 (65.2%) were HEU. At 1-3 months, HUU infants had attained age-appropriate milestones for receptive language, large movement and play activity milestones in lower proportions (-10.0%, -10.0%, and -22.5%, respectively) than the GMCD international standardised sample (Figure 1G). HEU infants who were 1-3 months of age had attained all age-appropriate milestones for 1-3 months postpartum. We found no association between HIV-exposure group and probability of attaining all age-appropriate milestones (compared to not attaining) in any GMCD neurodevelopmental theme at 1-3 months (Fisher's exact).

A 3-5-month assessment was performed on the 8/31 (25.8%) infants at follow up who were within this age range. Of these infants, 7/8 (87.5%) were HEU. Fewer HEU infants who were 3-5 months of age had attained age-appropriate fine movement milestones in comparison to the GMCD international standardised sample (14.3% of HEU attained vs. 85% standardised sample, Figure 1H). The one HUU infant who was 3-5 months attained all developmental milestones. HEU infants who were 3-5 months of age had attained all age-appropriate milestones for expressive language, receptive language, large movement and play activities, and met the international standardised sample proportion for relating and response behaviour (+0.70%). All HUU and HEU infants who were 3-5 months had attained all 1-3 month milestones for all themes, consistent with the GMCD international standardised sample. Multiple variable regression analysis revealed no differences between all HEU and HUU infants for the number of GMCD milestones attained in infants at 12 weeks postpartum (Table 2).

Table 2. Infant cohort characteristics and anthropometric, immune, and developmental outcomes at birth and 8-16 weeks postpartum.

| | HIV-unexposed- uninfected infants n=22 | HIV-exposed- uninfected infants n=32 | p value (unadjusted) | p value (adjusted) |
|--|--|--|-------------------------|-----------------------|
| Infant sex (% male) | 45.5 | 34.4 | NS | - |
| Gestational age at delivery (weeks) | 38.4 ± 1.56 | 38.7 ± 1.69 | NS | - |
| <37 weeks GA (n) | 2 | 3 | NS | - |
| <37 weeks GA (weeks) | 35.5 (35.0, 36.0) | 36.0 (35.0, 36.0) | NS | - |
| Birth | n=22 | n=32 | | |
| Infant anthropometry^a | | | | |
| Weight z-score | -0.57 ± 1.15 | -0.76 ± 0.96 | NS | NS |
| Length z-score | -1.33 (-3.20, 0.45) | -1.65 (-2.33, -0.94) | NS | NS |
| BMI z-score | -0.15 (-1.76, 1.80) | 0.09 (-0.81, 0.97) | NS | NS |
| Head circumference z-score | -0.33 ± 1.19 | -1.58 ± 1.22 | <0.001 | <0.001 |
| Brain-to-body weight ratio | 10.2 (9.77, 11.3) | 9.60 (8.88, 10.4) | NS | 0.04 |
| Apgar score | | | | |
| 1 minute | 9.00 (8.00, 9.00) | 9.00 (8.00, 9.00) | NS | NS |
| 5 minute | 9.00 (9.00, 10.0) | 9.00 (9.00, 9.00) | NS | NS |
| Immune measures | | | | |
| Total CD14+ | n=21 10.5 (8.19, 12.2) | n=32 8.76 (6.23, 12.0) | NS | NS |
| %CCR2-positive CD14+ monocytes | 82.9 ± 6.91 | 86.6 ± 4.85 | 0.03 | NS |
| Monocyte sub-populations (%) | | | | |
| Classical (CD14++/CD16-) | 67.8 ± 13.7 | 70.8 ± 13.3 | NS | NS |
| Intermediate (CD14++/CD16+) | 14.7 (9.83, 21.2) | 12.9 (9.35, 17.0) | NS | NS |
| Non-classical (CD14+/CD16+) | 8.40 (4.26, 15.4) | 8.44 (4.17, 13.0) | NS | NS |
| %CCR2-positive monocyte sub-populations | | | | |
| Classical (CD14++/CD16-) | 94.7 (92.2, 97.2) | 97.4 (95.2, 98.4) | 0.01 | 0.01 |
| Intermediate (CD14++/CD16+) | 60.4 (51.4, 71.9) | 68.2 (62.3, 80.9) | NS | NS |
| Non-classical (CD14+/CD16+) | 8.05 (4.00, 15.4) | 6.88 (3.55, 15.1) | NS | NS |
| CCR2 MFI on monocyte sub-populations | | | | |
| Classical (CD14++/CD16-) | 5.25 (4.49, 6.63) | 6.29 (5.59, 6.81) | 0.04 | 0.03 |
| Intermediate (CD14++/CD16+) | 2.33 (2.16, 2.65) | 2.87 (2.34, 3.48) | 0.003 | 0.03 |
| Non-classical (CD14+/CD16+) | 1.65 (1.55, 1.92) | 1.70 (1.49, 2.22) | NS | NS |
| 12 weeks postpartum | | | | |
| Infant age at follow up (weeks) | n=10 10.4 (10.1, 12.1) | n=21 12.0 (10.1, 13.3) | NS | - |
| Infant anthropometry^a | | | | |
| Head circumference z-score | -0.73 (1.40, -0.58) | -1.47 (-2.17, -0.97) | 0.03 | NS |
| Weight z-score | 0.12 (-1.02, 0.56) | -0.46 (-0.93, 0.02) | NS | NS |
| Length z-score | -0.95 (-2.74, -0.27) | -1.18 (-1.69, -0.62) | NS | NS |
| BMI z-score | 0.44 ± 1.92 | 0.19 ± 1.12 | NS | NS |
| Brain-to-body weight ratio | 7.39 (6.67, 8.04) | 7.59 (7.08, 7.83) | NS | NS |
| Growth rate (birth to 8-16 weeks PP; kg/day) | 0.04 ± 0.01 | 0.03 ± 0.01 | NS | NS |
| Immune measures | | | | |
| Total CD14+ | n=10 7.40 (5.69, 9.78) | n=17 7.16 (5.69, 8.98) | NS | NS |
| %CCR2-positive CD14+ monocytes | 80.3 (74.9, 85.3) | 76.0 (63.5, 80.2) | NS | NS |
| Monocyte sub-populations (%) | | | | |
| Classical (CD14++/CD16-) | 68.0 (67.5, 75.3) | 64.1 (57.3, 72.9) | NS | NS |
| Intermediate (CD14++/CD16+) | 8.49 (6.61, 13.7) | 12.6 (8.95, 22.3) | NS | NS |

| | | | | |
|--|-------------------|-------------------|-------|------|
| Non-classical (CD14+/CD16+) | 16.7 ± 4.94 | 19.4 ± 5.85 | NS | NS |
| %CCR2-positive monocyte sub-populations | | | | |
| Classical (CD14+/CD16-) | 93.3 (89.3, 96.6) | 94.7 (93.5, 96.2) | NS | NS |
| Intermediate (CD14+/CD16+) | 44.8 ± 23.1 | 56.2 ± 12.2 | NS | 0.05 |
| Non-classical (CD14+/CD16+) | 1.59 (0.82, 3.09) | 3.42 (1.70, 4.32) | NS | NS |
| CCR2 MFI on monocyte sub-populations | | | | |
| Classical (CD14+/CD16-) | 4.67 (3.83, 6.04) | 4.46 (4.03, 4.89) | NS | NS |
| Intermediate (CD14+/CD16+) | 2.19 (1.95, 3.14) | 2.22 (1.89, 2.49) | NS | NS |
| Non-classical (CD14+/CD16+) | 1.55 (1.40, 2.52) | 1.64 (1.40, 1.93) | NS | NS |
| Neurodevelopment (GMCD) | | | | |
| Total number of milestones attained (12 weeks postpartum) | | | | |
| | n=9 | n=21 | | |
| Fine movement | 1.00 (1.00, 1.50) | 1.00 (1.00, 1.00) | NS | NS |
| Large movement | 4.00 (2.50, 4.00) | 4.00 (4.00, 4.00) | NS | NS |
| Expressive language | 3.00 (2.00, 3.00) | 3.00 (3.00, 3.00) | 0.04 | NS |
| Receptive language | 3.00 (2.50, 3.00) | 3.00 (3.00, 3.00) | NS | NS |
| Play activities | 1.00 (0.50, 2.00) | 2.00 (2.00, 2.00) | 0.003 | NS |
| Relating and response behaviour | 2.00 (2.00, 3.00) | 3.00 (2.00, 3.00) | NS | NS |

Data are presented means ± SD (ANOVA) or median (IQR; Kruskal-Wallis/Wilcoxon test for non-parametric data, or Welch's test for normal data/unequal variance) with p values from unadjusted univariate analyses and adjusted multiple variable regression models. Differences infant sex and <37 GA proportions for HUU vs. HEU infants were assessed by Fisher's exact test. ^aAll infant anthropometric measures are standardised according to WHO child growth standards (29).

Differences between the cohort at birth and 12 weeks postpartum

Attrition was higher for HUU (54.5%) than HEU (34.4%) infants. Within the HUU infant group, infants who were not lost to follow up had significantly lower BMI at birth than those who were lost to follow up (-1.32 ± 2.47 vs. 0.90 ± 1.85 , $p=0.03$). There were no other differences for anthropometric, Apgar scores or immune measures at birth within the HUU or HEU infant groups, when comparing infant who were versus were not at follow up.

Discussion

As access to ART increases worldwide and the number of HEU children born each year also rises, there is growing need to understand how, and to what extent, exposure to HIV and ART *in utero* influences infant health trajectories. In this study, HEU infants had reduced head circumference and elevated CCR2 expression by CD14+ monocytes within 4 days of birth compared to HUU infants, and attained fine movement milestones at 3-5 months of age in lower proportions than the GMCD standardised proportions. These findings are largely consistent with our hypothesis that although uninfected themselves, infants whose mothers are HIV-infected and on ARTs may experience poorer health outcomes compared to HIV-unexposed, uninfected infants.

Reduced head circumference (14), weight, and length (13) at birth is well-documented in HEI infants relative to HEU and HUU infants. Studies investigating anthropometry in HEU infants at birth are revealing that HEU infants may also be at risk for lower birthweight, length, BMI (36,37) and head circumference (14) at birth relative to HUU infants, not unlike, but to a lesser degree than, HEI infants. Our finding that HEU infants had lower head circumference than HUU at birth is consistent with these studies, although in our cohort head circumference was not different between groups in adjusted analyses at follow up. These findings are important because small head circumference at birth has

been shown to associate with poorer performance on neurodevelopmental assessments in school-aged children, including on cognitive tasks measuring memory and visuo-spatial ability (38), early adiposity rebound and increased risk for adult obesity (39,40), cardiovascular disease mortality (41), and mental health disorders such as schizophrenia (42). It is not known whether, in the context of maternal HIV infection, small head circumference at birth is linked to persistent deficits in neurodevelopment and/or, in the longer term, later life brain and metabolic compromise. Our findings should be interpreted cautiously given our small sample size and limited power, but suggest that future studies should investigate whether these outcomes at birth may have predictive value for developmental trajectories of HEU infants.

Brain-to-body weight ratio was calculated to determine whether HEU may associate with increased risk of IUGR in comparison to HUU infants. Higher BBR may associate with brain sparing and IUGR (31), which are linked to shorter attention span, motor hyperactivity, and poorer performance on measures of language, cognitive, and motor outcomes at 10 years of age compared to infants who were not IUGR (43). IUGR infants also have stunted immune functioning (44,45) and increased risk of metabolic disease later in life (46). Our findings of higher BBR among HUU infants at birth in comparison to HEU may have been influenced by our small sample size and/or may suggest that within this population, exposure to HIV and ART in the womb did not increase infant susceptibility to IUGR or brain sparing in HEU. To our knowledge, this is the first study to use a measure of BBR in a HEU population. The decrease in BBR ratio seen in both groups from birth to 12 weeks postpartum is consistent with growth trajectories in early child development, where the rate of change for body size is higher than the rate of change for brain size (47).

Elevated blood monocytes in HEI infants have been associated with poorer neurologic outcomes and increased risk of HIV-associated progressive encephalopathy (48), however, our study found no

differences in %CD14+ total monocytes or monocyte subset levels between HEU and HUU infants at birth or at follow up, suggesting that these same changes in total monocyte composition are not experienced by HEU infants. We also found increased CCR2 expression on classical monocytes at birth and intermediate monocytes at 12 weeks, and increased levels of CCR2 expression (MFI) on classical and intermediate monocytes in HEU infants at birth. Increased in CCR2 expression may result in increased recruitment of monocyte populations across the blood brain barrier, which may have consequences for neurodevelopment, as the expression of CCR2 by CD14+ monocytes has been shown to associate with HIV-1 induced neuropsychological impairment and neuroinflammation in adults (24,49). The expression and release of a CCR2 ligand, monocyte chemoattractant protein-1 (MCP-1), from astrocytes in the brain is increased by HIV-1 infection (50). MCP-1 levels have been shown to positively correlate with severity of HIV-induced neuropsychological impairment in adults (51). Importantly, whether or not elevated MCP-1 levels, or CCR2 expression by monocyte subsets as observed in the HEU infants in this cohort, may have consequences for children prenatally exposed to HIV remains to be determined. The clinical importance of the subtle differences in monocyte phenotypes observed in our cohort remains unclear, and larger studies should replicate these findings to determine whether or not these will persist throughout development.

There are well-documented, positive associations between pro-inflammatory perinatal exposures and adverse motor outcomes (52–54), in both animal (52,53) and human studies (54), consistent with the potential differences in monocyte migratory potential among HEU children, and the low proportion of HEU children attaining fine movement milestones at 3-5 months of age in this study. Prenatal exposures to maternal inflammation also influence the development of the infant's innate and adaptive immune systems (55), and the resulting alterations in infant immune function may have consequences for brain development. In our study, most infants met all GMCD milestones. Just one of seven HEU infants met fine movement milestones at 3-5 months (compared to the single HUU infant who met these milestones at 3-5 months), however, given our short follow up window and low power, we cannot determine whether this finding could be generalised to a larger cohort, and future studies with large sample size should include repeated measures of neurodevelopmental milestones across infancy and childhood to better understand the longer term impact of HIV exposure without infection on neurodevelopment. Previous studies investigating fine motor outcomes in HEU infants compared to HUU have reported mixed results, with some observing lower scores among HEU infants (56,57) and others reporting no differences (56,58). Notably, these studies were conducted across a wide range of geographical locations and varied in their measurement tools, cohort demographics, and study design, therefore direct comparisons should be made with caution.

In this pilot feasibility study attrition was high, particularly among the HUU infant population, and HUU infants who came for follow up had significantly lower BMI at birth than those for who were lost to follow up. It may be that the HUU population we saw at follow up represented babies who had poorer health, and as such, mothers may have been more likely to attend the follow up appointment if they had any concern about their infant's well-being, resulting in sample bias. We did not expect to observe a low proportion of HUU infants attaining milestones for receptive language, large movement and play activity milestones in comparison to the GMCD international standardised sample, and we hypothesise that these findings have been influenced by a biased sample of HUU infants at follow up who had poorer health. Despite BMI differences in HUU lost to follow up and not, there were no other

differences within HUU or HEU infant groups when stratifying by follow up (versus not), suggesting that the sample bias may be minimal.

There are many variables that have the potential to influence the phenotype of the HEU fetus and child, thus the mechanisms linking HIV exposure in the womb with poor offspring development *in utero* and after birth remain unresolved. For example, there is a need to better understand how the placenta, which minimises adverse exposures from reaching the fetus and promotes fetal growth and development through nutrient transfer, adapts to maternal HIV infection. Pro-inflammatory and infectious molecules in pregnancy can target the placenta, affecting its development and function, and changes in placental morphology, histopathology, and inflammatory response to adverse pregnancy environments have been associated with offspring neurodevelopmental outcomes (59). Further, the influence of the early nutritional environment, including food (in)security and maternal nutrition, on health outcomes in HEU children has not been well characterised. HIV infection is known to increase a household's risk of food insecurity by decreasing household productivity and economic capacity (60,61), and in turn, food insecurity is linked to reduced ART access and poorer ART adherence (62,63). Malnutrition may exacerbate maternal immunosuppression related to HIV infection and adversely interact with ART pharmacokinetics (64,65), and the comorbidity of these exposures for infants *in utero* may be more detrimental than the occurrence of one of these particular circumstances. Moreover, as ART coverage and viral suppression for pregnant women has increased, recommendations around postnatal feeding practices have evolved to promote exclusive breastfeeding for HIV-positive women (66). Whether, and to what extent, the benefits of exclusive breastfeeding and constituents in breast milk may protect against suboptimal development in HEU infants, has not been studied comprehensively. Prospective analyses will evaluate the influence of food (in)security, maternal nutrition, and breastfeeding on these outcomes in this infant population.

Although the translatability of our findings is limited by our study's small sample size and short follow up time point, we were successful in our aim to recruit women to study the effects of *in utero* HIV exposure on infant outcomes, and our findings can inform larger studies on these relationships. The small sample size meant it was not possible to evaluate associations between maternal ART and infant outcomes. Additionally, although studies suggest an increased risk of prematurity in HIV affected pregnancies (67), few pregnancies in our cohort were preterm, and as such data from our population cannot be used to address possible differences in risk of preterm birth between HEU and HUU groups. There was also high attrition among both populations, particularly within the HUU group, which may have led to sample bias at follow up. Individuals from communities in this area are highly mobile, and although multiple attempts were made to contact each mother to encourage her to return, this presented challenges for study retention. Despite these limitations, our study was able to capture information on infant growth, immune function and neurodevelopment at two time points within the same infant population. We are now conducting a larger prospective pregnancy and birth cohort study at Kalafong Hospital to further investigate relationships that have emerged in these exploratory pilot study analyses. To our knowledge, this prospective cohort study is among the few to concomitantly interrogate growth and neurodevelopmental outcomes and immune function among a population of HIV-exposed, uninfected infants in comparison to HIV-unexposed controls.

In agreement with previous and larger studies, our small feasibility pilot study suggests that exposure to HIV in the womb adversely can affect infant development. Whilst developmental and health outcomes in HEU

babies are likely less pronounced than adverse outcomes seen in HEI, with the rising population of HEU infants due to progress made in PMTCT, there is growing need to understand their development and health outcomes to ensure that they have the healthiest start to life. Importantly, this will open the door to interventions that, when applied in early life, have the potential to correct developmental trajectories established before birth due to exposure to HIV and ART.

Acknowledgments

We thank the participating families and health care workers in Pretoria, for without whom this research would not be possible.

This research is funded by the Collaborative Initiative for Paediatric HIV Education and Research (CIPHER), the Faculty of Science, Carleton University, and the Canadian Institutes of Health Research (CIHR). MW is supported by a Canadian Graduate Scholarship-Master's from CIHR.

Author Contributions and Notes

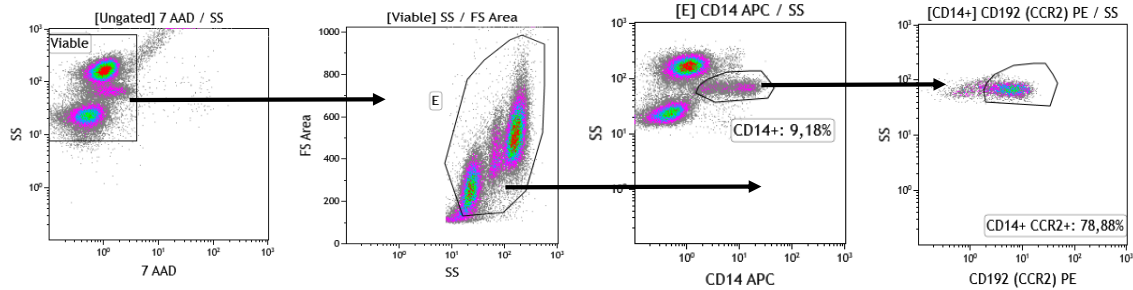
KLC, TR, UDF and EC developed the study protocol and instruments. MW and KLC analysed and interpreted the data and drafted and revised the article. CD performed the flow cytometry and analyzed the flow cytometry data. TR, UF and EC contributed to data interpretation and article revisions. ED contributed to data management, interpretation and article revisions. FM contributed to sample collection and article revisions. TR and KLC provided financial support for the study and personnel.

References

1. Gibb DM, Kizito H, Russell EC, et al. Pregnancy and infant outcomes among HIV-infected women taking long-term ART with and without tenofovir in the DART trial. *PLoS Med* 2012;9:e1001217.
2. UNAIDS. The Gap Report. Geneva: 2014.
3. Rollins NC, Coovadia HM, Bland RM, et al. Pregnancy Outcomes in HIV-Infected and Uninfected Women in Rural and Urban South Africa. *JAIDS J Acquir Immune Defic Syndr* 2007;44:321–8.
4. Arab K, Spence AR, Czuzoj-Shulman N, Abenheim HA. Pregnancy outcomes in HIV-positive women: a retrospective cohort study. *Arch Gynecol Obstet* 2017;295:599–606.
5. Dadhwal, MD V, Sharma, MD A, Khoiwal, MD K, Deka, MD D, Sarkar, MD P, Vanamail, MPS, PhD P. Pregnancy Outcomes in HIV-Infected Women: Experience from a Tertiary Care Center in India. *Int J MCH AIDS* 2017;6:75.
6. Faa G, Manchia M, Pintus R, Gerosa C, Marcialis MA, Fanos V. Fetal programming of neuropsychiatric disorders. *Birth Defects Res Part C Embryo Today Rev* 2016;108:207–23.
7. Ballan WM, Vu BA, Long BR, et al. Natural killer cells in perinatally HIV-1-infected children exhibit less degranulation compared to HIV-1-exposed uninfected children and their expression of KIR2DL3, NKG2C, and NKp46 correlates with disease severity. *J Immunol* 2007;179:3362–70.
8. Pfeifer C, Bunders MJ. Maternal HIV infection alters the immune balance in the mother and fetus; implications for pregnancy outcome and infant health. *Curr Opin HIV Aids* 2016;11:138–45.
9. Brocklehurst P, French R. The association between maternal HIV infection and perinatal outcome: a systematic review of the literature and meta-analysis. *Br J Obstet Gynaecol* 1998;105:836–48.
10. Mofenson LM, Oleske J, Serchuck L, Dyke R Van, Wilfert C. Treating opportunistic infections among HIV-exposed and infected children: recommendations from CDC, the National Institutes of Health, and the Infectious Diseases Society of America. *MMWR Recomm Rep* 2004;53:1–92.
11. Whitehead N, Potterton J, Coovadia A. The neurodevelopment of HIV-infected infants on HAART compared to HIV-exposed but uninfected infants. *AIDS Care* 2014;26:497–504.
12. Boivin MJ, Green SD, Davies AG, Giordani B, Mokili JK, Cutting WA. A preliminary evaluation of the cognitive and motor effects of pediatric HIV infection in Zairian children. *Health Psychol* 1995;14:13–21.
13. Omoni AO, Ntozini R, Evans C, et al. Child Growth According to Maternal and Child HIV Status in Zimbabwe. *Pediatr Infect Dis J* 2017;36:869–76.
14. Evans C, Chasekwa B, Ntozini R, Humphrey JH, Prendergast AJ. Head circumferences of children born to HIV-infected and HIV-uninfected mothers in Zimbabwe during the preantiretroviral therapy era. *AIDS* 2016;30:2323–8.
15. UNAIDS. Global AIDS Monitoring 2018. 2018.
16. Volmink J, Siegfried NL, Merwe L van der, Brocklehurst P. Antiretrovirals for reducing the risk of mother-to-child transmission of HIV infection. *Cochrane Database Syst Rev* 2007.
17. UNAIDS. South Africa | UNAIDS. UNAIDS. 2019.
18. South African National AIDS Council (SANAC). Let our actions count: National Strategic Plan on HIV, TB and STIs (2017–2022). 2018.
19. Guaraldi G, Stentarelli C, Da Silva AD, et al. Metabolic alterations in HIV-infected pregnant women: moving to metabolic tailoring of antiretroviral drugs. *AIDS Rev* 2014;16:14–22.
20. Malaba TR, Phillips T, Le Roux S, et al. Antiretroviral therapy use during pregnancy and adverse birth outcomes in South African women. *Int J Epidemiol* 2017;46:1678–89.
21. Funderburg NT, Zidar DA, Shive C, et al. Shared monocyte subset phenotypes in HIV-1 infection and in uninfected subjects with acute coronary syndrome. *Blood* 2012;120:4599–608.
22. Saylor D, Dickens AM, Sacktor N, et al. HIV-associated neurocognitive disorder — pathogenesis and prospects for treatment. *Nat Rev Neurol* 2016;12:234–48.
23. Hemkens LG, Bucher HC. HIV infection and cardiovascular disease. *Eur Heart J* 2014;35:1373–81.
24. Veenstra M, Byrd DA, Inglese M, et al. CCR2 on Peripheral Blood CD14+CD16+ Monocytes Correlates with Neuronal Damage, HIV-Associated Neurocognitive Disorders, and Peripheral HIV DNA: reseeded of CNS reservoirs? *J Neuroimmune Pharmacol* 2019;14:120–33.
25. Uprety P, Lindsey JC, Levin MJ, et al. Inflammation and Immune Activation in Antiretroviral-Treated Human Immunodeficiency Virus Type 1–Infected African Infants and Rotavirus Vaccine Responses. *J Infect Dis* 2017;215:928.
26. Thomas GD, Hamers AAJ, Nakao C, et al. Human Blood Monocyte Subsets. *Arterioscler Thromb Vasc Biol* 2017;37:1548–58.
27. Western Cape Government D of H. Road to Health Card | Western Cape Government . West. Cape Gov. 2014.
28. Ertem IO, Dogan DG, Gok CG, et al. A Guide for Monitoring Child Development in Low- and Middle-Income Countries. *Pediatrics* 2008;121:e581–9.
29. WHO | WHO Anthro (version 3.2.2, January 2011) and macros. WHO 2017.
30. McLennan JE, Gilles FH, Leviton A, Dooling EC. The Developing Human Brain : Growth and Epidemiologic Neuropathology. Elsevier Science; 1983.
31. Marconi AM, Ronzoni S, Bozzetti P, Vailati S, Morabito A, Battaglia FC. Comparison of fetal and neonatal growth curves in detecting growth restriction. *Obstet Gynecol* 2008;112:1227–34.
32. Ziegler-Heitbrock L, Ancuta P, Crowe S, et al. Nomenclature of monocytes and dendritic cells in blood. *Blood* 2010;116:e74–80.
33. Ozturk Ertem I, Krishnamurthy V, Mulaudzi MC, et al. Validation of the International Guide for Monitoring Child Development demonstrates good sensitivity and specificity in four diverse countries. *Acta Paediatr* 2019;108:1074–86.
34. Jiang NM, Tofail F, Ma JZ, et al. Early Life Inflammation and Neurodevelopmental Outcome in Bangladeshi Infants Growing Up in Adversity. *Am J Trop Med Hyg* 2017;97:974–9.
35. Ali S, Mustafa S, Balaji P, Dhaded S, Goudar S. Guide for monitoring child development in Indian setting. *IMRJ-Child Dev* 2011;1:05–7.
36. Ramokolo V, Goga AE, Lombard C, Doherty T, Jackson DJ,

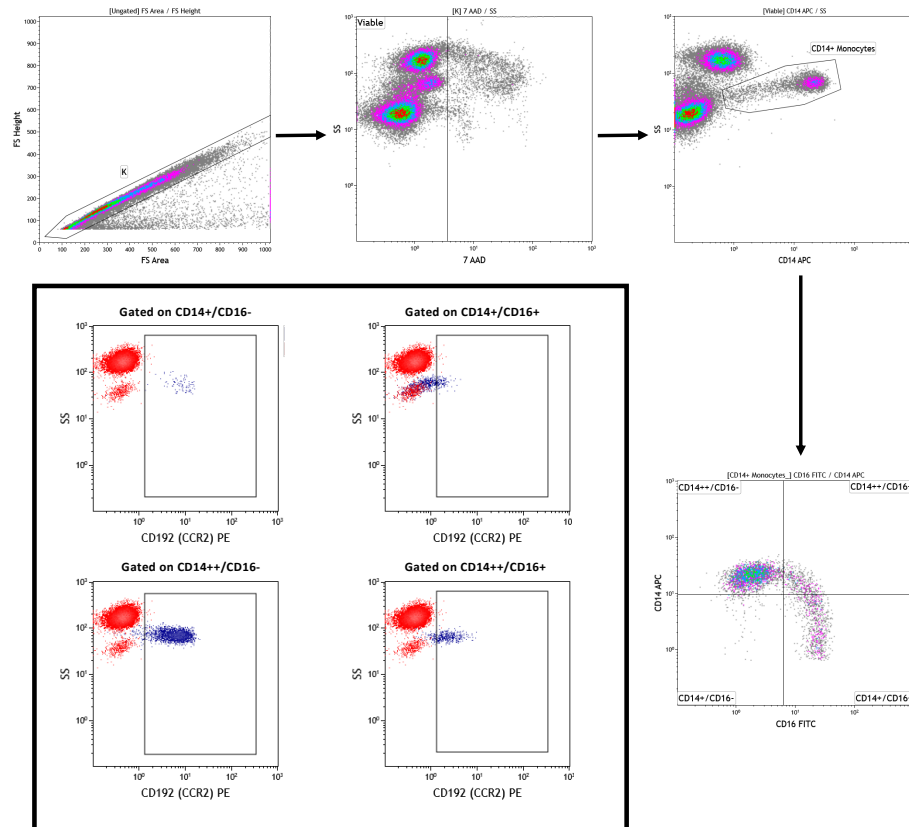
- Engebretsen IM. In Utero ART Exposure and Birth and Early Growth Outcomes Among HIV-Exposed Uninfected Infants Attending Immunization Services: Results From National PMTCT Surveillance, South Africa. *Open Forum Infect Dis* 2017;4:ofx187.
37. Rosala-Hallas A, Bartlett JW, Filteau S. Growth of HIV-exposed uninfected, compared with HIV-unexposed, Zambian children: a longitudinal analysis from infancy to school age. *BMC Pediatr* 2017;17:80.
 38. Veena SR, Krishnaveni G V, Wills AK, et al. Association of birthweight and head circumference at birth to cognitive performance in 9- to 10-year-old children in South India: prospective birth cohort study. *Pediatr Res* 2010;67:424–9.
 39. Eriksson JG, Kajantie E, Lampl M, Osmond C, Barker DJP. Small head circumference at birth and early age at adiposity rebound. *Acta Physiol* 2014;210:154–60.
 40. Whitaker RC, Pepe MS, Wright JA, Seidel KD, Dietz WH. Early adiposity rebound and the risk of adult obesity. *Pediatrics* 1998;101:E5.
 41. Risnes KR, Nilsen TIL, Romundstad PR, Vatten LJ. Head size at birth and long-term mortality from coronary heart disease. *Int J Epidemiol* 2009;38:955–62.
 42. Hultman CM, Ohman A, Cnattingius S, Wieselgren IM, Lindström LH. Prenatal and neonatal risk factors for schizophrenia. *Br J Psychiatry* 1997;170:128–33.
 43. Leitner Y, Fattal-Valevski A, Geva R, et al. Neurodevelopmental outcome of children with intrauterine growth retardation: a longitudinal, 10-year prospective study. *J Child Neurol* 2007;22:580–7.
 44. Olearo E, Oberto M, Oggè G, et al. Thymic volume in healthy, small for gestational age and growth restricted fetuses. *Prenat Diagn* 2012;32:662–7.
 45. Tröger B, Müller T, Faust K, et al. Intrauterine Growth Restriction and the Innate Immune System in Preterm Infants of =32 Weeks Gestation. *Neonatology* 2013;103:199–204.
 46. Barker D, Eriksson J, Forsén T, Osmond C. Fetal origins of adult disease: strength of effects and biological basis. *Int J Epidemiol* 2002;31:1235–9.
 47. WHO | The WHO Child Growth Standards. WHO 2016;
 48. Sanchez-Ramon S, Ma Bellon J, Resino S, et al. Low Blood CD8+ T-Lymphocytes and High Circulating Monocytes Are Predictors of HIV-1-Associated Progressive Encephalopathy in Children. *Pediatrics* 2003;111:e168–75.
 49. Williams DW, Byrd D, Rubin LH, Anastos K, Morgello S, Berman JW. CCR2 on CD14 + CD16 + monocytes is a biomarker of HIV-associated neurocognitive disorders. *Neurol - Neuroimmunol Neuroinflammation* 2014;1:e36.
 50. Conant K, Garzino-Demo A, Nath A, et al. Induction of monocyte chemoattractant protein-1 in HIV-1 Tat-stimulated astrocytes and elevation in AIDS dementia. *Proc Natl Acad Sci U S A* 1998;95:3117–21.
 51. Kelder W, McArthur JC, Nance-Sproson T, McClernon D, Griffin DE. β -Chemokines MCP-1 and RANTES are selectively increased in cerebrospinal fluid of patients with human immunodeficiency virus-associated dementia. *Ann Neurol* 1998;44:831–5.
 52. Saadani-Makki F, Kannan S, Lu X, et al. Intrauterine administration of endotoxin leads to motor deficits in a rabbit model: a link between prenatal infection and cerebral palsy. *Am J Obstet Gynecol* 2008;199:651.e1-651.e7.
 53. Hornig M, Lipkin WI. Infectious and immune factors in the pathogenesis of neurodevelopmental disorders: Epidemiology, hypotheses, and animal models. *Ment Retard Dev Disabil Res Rev* 2001;7:200–10.
 54. Straley ME, Van Oeffelen W, Theze S, et al. Distinct alterations in motor & reward seeking behavior are dependent on the gestational age of exposure to LPS-induced maternal immune activation. *Brain Behav Immun* 2017;63:21–34.
 55. Kunzmann S, Collins JJP, Kuypers E, Kramer BW. Thrown off balance: the effect of antenatal inflammation on the developing lung and immune system. *Am J Obstet Gynecol* 2013;208:429–37.
 56. Chaudhury S, Williams PL, Mayondi GK, et al. Neurodevelopment of HIV-Exposed and HIV-Unexposed Uninfected Children at 24 Months. *Pediatrics* 2017;140:e20170988.
 57. Springer PE, Slogrove AL, Laughton B, et al. Neurodevelopmental outcome of HIV-exposed but uninfected infants in the Mother and Infants Health Study, Cape Town, South Africa. *Trop Med Int Heal* 2018;23:69–78.
 58. Wu J, Li J, Li Y, et al. Neurodevelopmental outcomes in young children born to HIV-positive mothers in rural Yunnan, China. *Pediatr Int* 2018.
 59. Hodyl NA, Aboustate N, Bianco-Miotto T, Roberts CT, Clifton VL, Stark MJ. Child neurodevelopmental outcomes following preterm and term birth: What can the placenta tell us? *Placenta* 2017;57:79–86.
 60. Bukusuba J, Kikafunda JK, Whitehead RG. Food security status in households of people living with HIV/AIDS (PLWHA) in a Ugandan urban setting. *Br J Nutr* 2007;98:211–7.
 61. de Waal A, Whiteside A. New variant famine: AIDS and food crisis in southern Africa. *Lancet* 2003;362:1234–7.
 62. Weiser SD, Frongillo EA, Ragland K, Hogg RS, Riley ED, Bangsberg DR. Food Insecurity is Associated with Incomplete HIV RNA Suppression Among Homeless and Marginally Housed HIV-infected Individuals in San Francisco. *J Gen Intern Med* 2009;24:14–20.
 63. Anema A, Vogenthaler N, Frongillo EA, Kadiyala S, Weiser SD. Food insecurity and HIV/AIDS: Current knowledge, gaps, and research priorities. *Curr HIV/AIDS Rep* 2009;6:224–31.
 64. Sekar V, Kestens D, Spinosa-Guzman S, et al. The Effect of Different Meal Types on the Pharmacokinetics of Darunavir (TMC114)/Ritonavir in HIV-Negative Healthy Volunteers. *J Clin Pharmacol* 2007;47:479–84.
 65. Boffito M, Acosta E, Burger D, et al. Current status and future prospects of therapeutic drug monitoring and applied clinical pharmacology in antiretroviral therapy. *Antivir Ther* 2005;10:375–92.
 66. WHO | Breast is always best, even for HIV-positive mothers. WHO 2011.
 67. Blencowe H, Cousens S, Chou D, et al. Born too soon: the global epidemiology of 15 million preterm births. *Reprod Health* 2013;10 Suppl 1:S2.

Analysis approach and gating strategy: CCR2 expression on CD14+ monocytes



Supplementary figure S1. Sequential gating approach for the measurement of CCR2 expression by CD14+ monocytes. The sequential gating approach used was as follows: First, the viable (7-AAD negative; region 'Viable') cells were identified using a 7-AAD vs SS Log density plot. A "Viable" region was created around the 7-AAD negative cells. Gated on the "Viable" cells, a SSLog vs FS plot was used to capture intact cells in the "E" region. CD14+ monocytes were identified ("CD14+" region) using a CD14 vs SS Log density plot that were gated on viable, intact cells ("E" region). CD14+ monocytes that express CCR2 were quantified using a CD192 (CCR2) vs SS Log plot. The proportion of CD14+/CCR2+ cells were captured in the "CD14+ CCR2+" region. The gating strategy followed to quantify CCR2 expression by CD16+ neutrophils was similar to what was described for CD14+ monocytes, but instead of identifying CD14+ monocytes, CD16+ neutrophils were identified ("CD16+" region) using a CD16 vs SS Log density plot that were gated on viable, intact cells ("E" region). CD16+ neutrophils that express CCR2 were quantified using a CD192 (CCR2) vs SS Log plot. The proportion of CD14+/CCR2+ cells was captured in the "CD16+ CCR2+" region.

Analysis approach and gating strategy: CCR2 expression by monocyte sub-populations



Supplementary figure S2. Sequential gating approach for the measurement of CCR2 expression by monocyte sub-populations. Doubles and debris were removed (Region 'K') using a FS Area vs FS Height density plot. A 7-AAD vs SS Log density plot, gated on 'K' was used to exclude all non-viable cells. Viable cells were captured in region 'Viable'. Viable CD14+ monocytes were identified (Region 'CD14+ Monocytes') using a CD14 APC vs SS Log density plot. Monocyte sub-populations were identified using a CD16 FITC vs CD14 PE density plot gated on viable, CD14+ monocytes. Four monocyte sub-populations were identified: CD14+/CD16-; CD14++/CD16-; CD14+/CD16+; and CD14++/CD16+. The percentage CCR2+ monocytes present in each of the respective monocyte sub-populations were identified using CD195 (CCR2) PE vs SS Log two-parameter plots gated on the respective sub-populations. The overlay plots within the black bordered square indicates the strategy used to determine CCR2 expression of the different monocyte subsets. The negative/positive staining boundaries were determined based on the negative expression of CCR2 by CD16+/CD14- neutrophils (indicated in red in the overlay plots). The CCR2+ populations are indicated in blue.

Supplementary table S1. Flow cytometry reagent list (including lasers and detectors used).

| Monoclonal antibody | Clone | Supplier | Excitation (laser) | Fluorescent Channel | Emission (Detector) |
|----------------------------|--------------|---------------------------------|---------------------------|----------------------------|----------------------------|
| 7-AAD | N/A | Beckman Coulter, Miami, FL, USA | 488 nm (blue) | FL4 | 695/30 |
| CD16-FITC | 3G8 | BioLegend®, San Diego, CA, USA | 488 nm (blue) | FL1 | 525/40 |
| CD14-APC | 63D3 | BioLegend®, San Diego, CA, USA | 635 nm (red) | FL6 | 660/20 |
| CD192 (CCR2)-PE | K036C2 | BioLegend®, San Diego, CA, USA | 488 nm (blue) | FL2 | 575/30 |

N/A: Not applicable

Supplementary table S2. Flow cytometry compensation matrix

| % Spillover | | | | |
|--------------------|------------|------------|------------|------------|
| | FL1 | FL2 | FL4 | FL6 |
| FL1 | - | 2.40 | 0.00 | 0.00 |
| FL2 | 5.00 | - | 0.00 | 0.00 |
| FL4 | 0.00 | 59.98 | - | 0.00 |
| FL6 | 0.00 | 0.00 | 0.00 | - |

Supplementary table S3. Final ANCOVA models for analysis of infant anthropometry, immune and neurodevelopmental outcomes at birth and 12 weeks postpartum for HEU compared to HUU infants.

| Outcome variables | Maternal variables | | | | | | | Infant variables | | | | | | | | | | | | | | | | | | | |
|---|-------------------------|-------------|-----------|-----------|--------|----------------|-------------------------|------------------|-----------------|---|--|-------------------------|-------------------------------------|----------------------|-------------------------|--------------|----------------------------|--|-------------------------|----------------------------|-----------------|---------------------------------|-------------------------|------------------------------------|--|--|--|
| | Weight at delivery (kg) | Age (years) | Education | Gravidity | Parity | Smoke exposure | Breastfeeding practices | Infant sex | Gestational age | %CCR2-positive CD14+ monocytes at birth | %CCR2-positive CD14+ monocytes at 12 weeks | Weight z-score at birth | Head circumference z-score at birth | BMI z-score at birth | Length z-score at birth | BBR at birth | Weight z-score at 12 weeks | Head circumference z-score at 12 weeks | BMI z-score at 12 weeks | Length z-score at 12 weeks | BBR at 12 weeks | Growth rate (kg/day; 12 wks PP) | Days alive at follow up | Households experiences food runout | Household ability to afford balanced meals | | |
| Anthropometry and Apgar at birth | | | | | | | | | | | | | | | | | | | | | | | | | | | |
| Weight z-score | | | | | x | | | | | x | | | | | | | | | | | | | | | | | |
| HC z-score | | | | | x | | | | | | | | | | | | | | | | | | | | | | |
| BMI z-score | | | | | x | | | | | | | | | | | | | | | | | | | | | | |
| Length z-score | | | | x | x | | | | | x | | | | | | | | | | | | | | | | | |
| BBR | | | | | x | | | | | | | | | | | | | | | | | | | | | | |
| Apgar score 1 minute | | | | | | | | | | | | | | | | | | | | | | | | | | | |
| Apgar score 5 minutes | | | | | | | | | | | | | x | | | | | | | | | | | | | | |
| Immune biomarkers at birth | | | | | | | | | | | | | | | | | | | | | | | | | | | |

| | | | | | | | | | | | | | | | | | | | | | | | | |
|---|---|---|--|--|--|---|--|---|--|--|---|---|---|--|--|---|---|---|--|---|--|--|--|---|
| Total CD14+ | | | | | | x | | | | | | | | | | | | | | | | | | |
| %CCR2 total monocytes | | | | | | x | | x | | | | | | | | | | | | | | | | |
| Monocyte sub-populations (%) | | | | | | | | | | | | | | | | | | | | | | | | |
| CD14++/CD16- | | | | | | | | | | | | | | | | | | | | | | | | |
| CD14++/CD16+ | | | | | | | | | | | | | | | | | | | | | | | | |
| CD14+/CD16+ | | | | | | | | | | | | | | | | | | | | | | | | |
| % CCR2-positive monocyte sub-populations | | | | | | | | | | | | | | | | | | | | | | | | |
| CD14++/CD16- | | | | | | x | | x | | | | | | | | | | | | | | | | |
| CD14++/CD16+ | | | | | | | | x | | | | | | | | | | | | | | | | |
| CD14+/CD16+ | | | | | | x | | x | | | x | | | | | | | | | | | | | |
| CCR2 MFI on monocyte sub-populations | | | | | | | | | | | | | | | | | | | | | | | | |
| CD14++/CD16- | | | | | | | | x | | | | | | | | | | | | | | | | |
| CD14++/CD16+ | | | | | | x | | x | | | | | | | | | | | | | | | | |
| CD14+/CD16+ | | | | | | x | | x | | | | | | | | | | | | | | | | |
| Anthropometry at 12 weeks postpartum | | | | | | | | | | | | | | | | | | | | | | | | |
| Weight z-score | x | | | | | x | | | | | x | | | | | | | | | x | | | | |
| HC z-score | x | x | | | | x | | | | | x | | | | | | | | | x | | | | |
| BMI z-score | x | | | | | x | | | | | x | | | | | | | | | x | | | | |
| Length z-score | | | | | | x | | | | | x | | | | | | | | | x | | | | |
| BBR | | | | | | x | | x | | | x | x | | | | | | | | | | | | |
| Growth rate (kg/day; birth-12 wks PP) | | | | | | | | x | | | | x | x | | | | | | | x | | | | |
| Immune biomarkers at 12 weeks postpartum | | | | | | | | | | | | | | | | | | | | | | | | |
| Total CD14+ | | | | | | x | | x | | | | | | | | x | | x | | x | | | | x |
| %CCR2 total monocytes | | | | | | | | x | | | | | | | | x | x | x | | | | | | x |
| Monocyte sub-populations (%) | | | | | | | | | | | | | | | | | | | | | | | | |
| CD14++/CD16- | | | | | | x | | | | | | | | | | x | x | x | | x | | | | x |
| CD14++/CD16+ | | | | | | x | | | | | | | | | | | | | | | | | | |
| CD14+/CD16+ | | | | | | x | | x | | | | | | | | | x | | | x | | | | x |
| % CCR2 positive monocyte sub-populations | | | | | | | | | | | | | | | | | | | | | | | | |

| | | | | | | | | | | | | | | | | | | | | | |
|---|--|---|--|---|--|--|--|---|--|---|---|---|---|---|---|---|--|---|---|---|---|
| CD14++/CD16- | | | | x | | | | | | x | x | x | | x | | | | | x | | |
| CD14++/CD16+ | | | | | | | | | | x | | x | | | | | | | x | | |
| CD14+/CD16+ | | | | x | | | | x | | x | x | x | | | | | | | x | | |
| CCR2 MFI on monocyte sub-populations | | | | | | | | | | | | | | | | | | | | | |
| CD14++/CD16- | | | | x | | | | x | | | | | | x | x | x | | x | | x | x |
| CD14++/CD16+ | | | | x | | | | x | | | | | | x | x | x | | x | | x | x |
| CD14+/CD16+ | | | | x | | | | x | | | | | | x | x | x | | x | | x | x |
| Neurodevelopment (GMCD) at 12 weeks postpartum | | | | | | | | | | | | | | | | | | | | | |
| Expressive language | | x | | | | | | | | x | x | x | x | | | | | x | x | | |
| Receptive language | | | | | | | | | | | x | x | x | x | | | | | | | |
| Fine movement | | | | | | | | | | x | x | x | x | x | | | | x | | | |
| Large movement | | x | | | | | | | | x | x | x | x | x | | | | | | x | |
| Play activities | | x | | | | | | | | | x | x | x | x | x | | | x | x | | |
| Relating/response | | x | | | | | | | | x | x | x | x | | | | | x | x | | |

Boxes marked 'x' indicate that the variable was included in the final model, and covariates shaded grey were not considered as potential confounders for the respective outcome variables. Known or suspected confounders for our outcome measures were included as covariables in regression models, including maternal (age, education, weight at delivery, gravidity, parity, smoke exposure, breastfeeding practices) and infant (gestational age, sex, CCR2-positive CD14+ monocytes at birth and 12 weeks postpartum, age (days) at follow up, growth rate from birth to 12 weeks postpartum), and through stepwise backward elimination, variables with $\alpha=0.20$ were retained in the final models. HC = head circumference; BBR = brain-to-body weight ratio; MFI = median fluorescence intensity; PP = postpartum; GMCD = Guide for monitoring child development.