

1 **Inferring the role of the microbiome on survival in patients treated**
2 **with immune checkpoint inhibitors: causal modeling, timing, and classes of**
3 **concomitant medications**
4

5 Daniel Spakowicz^{1,2§*}, Rebecca Hoyd^{1§}, Mitchell Muniak¹, Marium Husain¹, James S.
6 Bassett¹, Lei Wang², Gabriel Tinoco¹, Sandip H. Patel¹, Jarred Burkart¹, Abdul Miah¹, Mingjia
7 Li³, Andrew Johns¹, Madison Grogan¹, David P. Carbone¹, Claire F. Verschraegen¹, Kari L.
8 Kendra¹, Gregory A. Otterson¹, Lang Li², Carolyn J. Presley¹, and Dwight H. Owen¹

9 ¹ Division of Medical Oncology, Department of Internal Medicine, Ohio State University,
10 Columbus, OH, USA

11 ² Department of Biomedical Informatics, Ohio State University, Columbus, OH, USA

12 ³ Division of Hospital Medicine, Department of Internal Medicine, The Ohio State
13 University College of Medicine

14 § These authors contributed equally

15 *To whom correspondence should be addressed: Daniel.Spakowicz@osumc.edu

17 **ABSTRACT**

18 The microbiome has been shown to affect the response to Immune Checkpoint Inhibitors
19 (ICIs) in a small number of cancers. Here, we sought to more broadly survey cancers to identify
20 those in which the microbiome will play a role using retrospective analyses. We created a causal
21 model for the relationship between medications, the microbiome and ICI response and used it to
22 guide the abstraction of electronic health records of 690 patients who received ICI therapy for
23 advanced cancer. Medications associated with changes to the microbiome including antibiotics,
24 corticosteroids, proton pump inhibitors, histamine receptor blockers, non-steroid anti-
25 inflammatories and statins were abstracted. We tested the effect of medication timing on overall
26 survival (OS) and evaluated the robustness of medication effects in each cancer. Finally, we
27 compared the size of the effect observed for antibiotics classes to taxa correlated with ICI
28 response and a literature review of culture-based antibiotic susceptibilities. Of the medications
29 assessed, only antibiotics and corticosteroids significantly associated with lower OS. The
30 hazard ratios (HRs) for antibiotics and corticosteroids were highest near the start of ICI
31 treatment but remained significant when given prior to ICI. Antibiotics and corticosteroids
32 remained significantly associated with OS even when controlling for multiple factors such as
33 Eastern Cooperative Oncology Group performance status and stage. When grouping antibiotics
34 by class, β -lactams showed the strongest association with OS across all tested cancers. The
35 timing and strength of these effects after controlling for confounding factors are consistent with
36 role for the microbiome in response to ICIs.

37

38 **KEYWORDS (6)**

39 Microbiome, immune checkpoint inhibitors, antibiotics, corticosteroids, cancer,
40 immunotherapy

41 **BACKGROUND**

42 Treatment with Immune Checkpoint Inhibitors (ICIs) has improved patient outcomes
43 across a wide variety of cancers. Not all patients respond to these drugs and there is a need to
44 identify biomarkers of outcomes. Three recent studies have shown that microbes are associated
45 with response and overall survival (OS) in renal cell carcinoma (RCC), non-small cell lung
46 cancer (NSCLC) and melanoma (1–3). The microbiome may be a key player in response to ICI
47 therapy and a potential biomarker of treatment response.

48 The microbiome is known to interact with the immune system, but how it affects
49 response to ICIs is not understood. The effectiveness of ICI treatment relies on active T-cell
50 infiltration of a tumor; microbes have been associated with increased Tumor Infiltrating
51 Lymphocytes in an IL12-dependent manner (4). However, other immune cells dampen response
52 to ICIs such as myeloid-derived suppressor cells and FOXP3 & CD4+CD25+ T-regulatory cells.
53 Another, systemic form of immune repression is characterized by the production of
54 prostaglandins (5–7).

55 Several medications commonly used during routine oncologic care and ICI treatment
56 can influence inflammation pathways and/or the microbiome. Corticosteroids (CS) affect both of
57 the aforementioned T-cell subtypes and the prostaglandin-related inflammatory pathways (8).
58 Additionally, antibiotics (ABx) have a direct effect on the microbiome by killing or halting the
59 growth of bacteria. Proton pump inhibitors (PPIs), histamine 2 blockers (H2Bs), non-steroid anti-
60 inflammatory drugs (NSAIDs), and CS have also been associated with changes in the
61 microbiome but, in contrast to antibiotics, this mechanism is indirect (9). PPIs, by inhibiting
62 gastric acid secretion, alter the pH of the gut and change the number and types of bacteria that
63 pass through the stomach (10). Notably, if the taxa enriched by the PPI-induced pH change are
64 also important for response to ICIs, then PPI treatment during ICI may influence clinical

65 outcomes. The effect of other medications on clinical response may be challenging to interpret
66 given that the effects may influence both the microbiome and ICI response.

67 In order to disentangle these complex interactions, we created a model of the
68 relationship between patient characteristics, medications that affect the microbiome,
69 inflammation, and survival. Second, we performed a retrospective analysis of patients who
70 received ICI therapy for advanced cancer between 2011 and 2017 including medications with
71 known effects on either the microbiome or its pathway toward affecting ICI response. Third, we
72 estimated the association for each medication with OS. Fourth, we analyzed the effects of
73 medications longitudinally, in order to decouple confounding variables at different time points.
74 Fifth, we controlled for variables that broadly describe differences in baseline statuses (e.g.
75 Eastern Cooperative Oncology Group performance status (PS)) of individuals who received
76 concomitant medications and those who did not. Sixth, we compared the associations across
77 several cancers, for which the medications are prescribed in subtly different ways that can be
78 leveraged to gain further insight into the causal effects. Finally, we related these results to the
79 microbes shown to be enriched or depleted in individuals who respond to ICIs. The combination
80 of these strategies gives layers of support to defining the role of the microbiome in the context
81 ICI treatment of cancer.

82

83 **METHODS**

84 **Causal Model**

85 We performed a literature review of the relationship between the microbiome and
86 response to ICIs and medications that affect the microbiome (**Figure 1**, references in **Figure**
87 **S1**). From these references, a causal model was then constructed such that the nodes
88 correspond to observable endogenous variables (V_i), as a subset of a set of U exogenous and
89 unobserved variables that affect the relationship between the microbiome and OS in patients

90 treated with ICIs. Directed edges denote a relationship between variables when the following
91 conditions are met: (1) there is a reported relationship between variables in which both variables
92 were either observed or defined by intervention, and (2) the relationship cannot be explained
93 through using an existing path. For example, Gopalakrishnan et al reported a correlation
94 between the microbiome and ICI response (1). This relationship exists in the graph as mediated
95 by the nodes Microbiome → T-cell Mediated Inflammation → ICI Response, therefore no edge
96 is drawn directly from Microbiome → ICI Response. The resulting directed acyclic graph was
97 constructed using the igraph and dagitty packages in R (11,12).

98 **Retrospective data collection**

99 We identified patients with advanced cancer treated between 2011 and 2017 at the Ohio
100 State University Comprehensive Cancer Center/Arthur G. James Cancer Hospital (OSUCCC-
101 James) who received at least one dose of ICIs as part of an IRB approved retrospective study
102 (OSU-2016C0070, OSU-2017C0063). Patient data were collected and housed in REDCap (13).
103 Medication timing, dose and names were collected from the electronic medical record
104 information warehouse and validated by manual chart review.

105 **Medication history curation**

106 ABx and CS data were retrieved from the information warehouse within 180 days of ICI
107 start. All medications matching a comprehensive list of steroid generic and brand names were
108 collected with dates and routes of administration. Medications were filtered to those confirmed
109 to be administered and the results checked against a manually-curated subset of the records.

110 **Survival Analysis**

111 Overall survival (OS) was reported in days from the initiation of ICI to the date of death
112 or last follow-up. All univariate and multivariate analyses were conducted using the survminer
113 package in R (14,15). Univariate analyses used Kaplan-Meier survival curves with log-rank

114 tests. Multivariate analyses used Cox-Proportional Hazards models, defining the hazard
115 function for each patient k as:

$$116 \quad h_k(t) = h_0(t)e^{\{\sum_{t=1}^n \beta_1 A + \beta_2 S + \beta_3 B + \beta_4 E + \beta_5 G\}}$$

117 Where $h(t)$ is the hazard function at time $t = 1$ to n , \mathbf{A} is a binary indicator of antibiotic
118 use (+/- 28 days from start of ICIs), \mathbf{S} is a binary indicator of corticosteroid use (+/- 28 days from
119 start of ICIs), \mathbf{B} is BMI, \mathbf{E} is the Eastern Cooperative Oncology Group performance status (PS)
120 score (1-5), and \mathbf{G} is age. We constructed the models using the survival package and evaluated
121 model fits using a likelihood ratio tests in R (16–18).

122 **Timing analysis**

123 A 30-day sliding window was used to evaluate the effect of medication timing on the
124 association with OS. Patients prescribed medications within the window were compared to a
125 cohort of individuals who were not prescribed those medications within 180 days before or after
126 the start of ICI treatment. Kaplan-Meier survival curves were used to estimate a hazard ratio
127 (HR) of association with each treatment window, incremented by single-days, e.g. prescribed
128 180-150 days before ICI start vs no prescribed medications, and then prescribed 179-149 days
129 before ICI start vs no prescribed medications. HRs and confidence intervals were calculated in
130 the survival package and plotted with ggplot2 in R (17–19).

131 **Antibiotics and Corticosteroids classes**

132 ABx and CS were collapsed into categories by DrugBank v5.0 accession numbers (20).
133 HRs were estimated for medication class and cancer combinations if the total sample set
134 included at least 20 individuals. Cox Proportional Hazards models for the effects of ABx and CS
135 class were used to allow for simultaneous estimation of the effects of more than one class,
136 when applicable. Plots showing prescriptions of more than one class were created with the
137 UpSetR package in R (21).

138 **Regularized Cox Regression**

139 Regularized Cox survival models for each cancer were implemented in the glmnet
140 package in R. We optimized the regularization parameter by coordinate descent via 10-fold
141 cross-validation and then tested the robustness of the parameter selection and resulting
142 covariates with 1000 bootstrap replicates of different random samples of the dataset (22,23).

143 **Reproducibility**

144 Scripts to reproduce all figures and analyses can be found at
145 <https://github.com/spakowiczlab/co-med-io>.

146

147 **RESULTS**

148 **Causal Model**

149 The relationships between clinical variables, medications, the microbiome, ICI response
150 and OS are strongly interconnected. Our literature review to predict their causal relationships
151 (**Figure 1**) led to several hypotheses observable within retrospective data. First, medications
152 that directly affect the microbiome will alter OS via effects on T-cell mediated inflammation (i.e.
153 $ABx \rightarrow \text{Microbiome} \rightarrow \text{T-cell mediated inflammation} \rightarrow \text{ICI Response} \rightarrow \text{OS}$). Second, CS and
154 ABx may have additive effects on ICIs through a collider effect on T-cell mediated inflammation
155 (i.e. $ABx \rightarrow \text{Microbiome} \rightarrow \text{T-cell mediated inflammation} \leftarrow \text{CS}$). Finally, the clinical variables of
156 stage, BMI, age, and medications such as CS, confound the relationship between the
157 microbiome and ICI response, mediated by Prostaglandin-based inflammation (which itself is a
158 collider), and therefore must be controlled for in order to infer the role of the microbiome on OS
159 (**Figure 1**).

160 **Patient Characteristics**

161 Retrospective analysis of electronic medical records from 2011 to 2017 at the OSUCCC-
162 James identified 690 patients treated with ICIs (**Table 1**). Most (76.6%) had a PS of 0 or 1. The

163 most common diagnoses were melanoma (28.5%) and non-small cell lung cancer (NSCLC)
164 (23.4%). Cancers represented by fewer than 20 patients were categorized as “Other” (23.4%).
165 The majority of patients (90%) had metastatic disease. ICI treatments included nivolumab in
166 52.8% of patients, ipilimumab in 18.0% and pembrolizumab in 15.1%.

167 **Microbiome and inflammation-related concomitant medication use**

168 Among the medications included in the causal model, ABx, CS, PPIs, H2Bs, statins and
169 NSAIDs were identified in this cohort. ABx were prescribed in 35% of patients within 28 days of
170 the start of ICIs (Table 1). The most commonly prescribed ABx were β -lactams (**Figure S1**). CS
171 were prescribed in 40% patients within 28 days of the start of ICIs. The most commonly
172 prescribed CS were dexamethasone and prednisone (**Figure S2**). PPIs were prescribed in 37%
173 of patients. Some patients received a single medication and no others during the study period,
174 however, more frequently patients received several medications, e.g. CS with PPI and ABx,
175 consistent with prophylaxis for developing an ulcer or pneumonia (**Figure S3**). The analysis
176 strategy first tested for an association of a medication with OS without controlling for
177 confounding effects of other medications and then further explored those medications with
178 strong associations.

179 Across all cancer types, patients who were prescribed ABx within 28 days of the start of
180 ICIs showed decreased OS (**Figure 2A**). This was also true of patients prescribed CS (**Figure**
181 **2B**), but not of patients prescribed other medications (**Figure 2C**). ABx showed a strong
182 negative correlation with OS in RCC, NSCLC, melanoma, and bladder cancer. CS showed a
183 strong negative correlation with OS in NSCLC, melanoma and other cancers. While other
184 medications were not significantly associated with OS across all cancers, several showed
185 significant associations with specific cancers. For example, H2Bs and NSAIDs associated with
186 decreased OS in sarcoma and NSCLC, respectively. On the other hand, PPIs and Statins

187 positively associated with OS in sarcoma. However, we observed the strongest associations for
188 ABx and CS, and therefore followed these medications in further analyses.

189 **Timing of medication use**

190 Next we focused on the timing of ABx and CS prescriptions and their associations with
191 OS in each cancer, using a 30-day sliding window (see Methods). ABx showed a greater HR
192 than CS over nearly the entire period, and both were negatively associated with OS (**Figure**
193 **3A**). ABx treatment showed the highest HR more than 100 days before the start of ICIs with a
194 second, lesser peak around day 0. CS showed a single, strong peak at day 0. We therefore
195 focused the timing analyses around ICI day 0 to capture the largest HR for both ABx and CS
196 and examined the effects across cancers and drug subclasses.

197 **Antibiotics and Corticosteroids classes**

198 The effect of ABx on treatment response in different cancer types was not consistently
199 associated with ABx class (**Figure 3B**). For example, β -lactams showed the highest HR in
200 melanoma, but vancomycin (oral) had the highest HR in head and neck squamous cell
201 carcinoma (HNSC). In addition, the overall effect of ABx was sometimes associated with a
202 single ABx subclass and sometimes distributed over many. Additionally, NSCLC strongly
203 associated with fluoroquinolone ABx, and this effect was stronger than the effect observed for
204 all ABx combined. By contrast, the combined effect of all ABx in melanoma was much stronger
205 than any individual ABx class. In fact, tetracycline was positively associated with OS in
206 melanoma patients, despite the overall effect of ABx being negatively associated. On the other
207 hand, the effects of CS classes on different cancers was more consistent (**Figure 3C**), though
208 these comparisons were often limited by the sample size. Particularly with small sample sizes,
209 confounding effects of patients receiving multiple drugs, e.g. ABx and CS, may dominate
210 associations with OS. We therefore used combined models of ABx and CS to examine the
211 effects of each.

212 **Combined modeling of ABx and CS, controlling for covariates**

213 Models containing both ABx and CS showed that both are significantly associated with
214 OS. A Kaplan-Meier curve stratifying patients by ABx, CS, or both, showed nearly identical
215 intermediate effects of either ABx or CS, and an additive combined effect (**Figure 4A**). We next
216 sought to control for confounding covariates using a Cox Proportional Hazards model. Including
217 PS, BMI, sex, stage, and age in the model confirmed that ABx and CS remained highly
218 significant, as were PS, BMI and age (**Figure 4B**). This suggests that ABx and CS are affecting
219 OS in the context of ICI therapy by a mechanism other than that which is captured by PS, BMI
220 or age, and is consistent with the microbiome parent to T-cell inflammation and child of ABx
221 (**Figure 1**).

222 In order to estimate the effects of ABx and CS within each cancer, we applied a method
223 that (1) allowed different covariates to be included in each cancer, commensurate with the
224 different clinical features of each cancer, and (2) removed uninformative variables, increasing
225 the power for those cancers with smaller numbers of patients in this dataset. In addition, we
226 repeated the analysis with different random samplings of the data in order to estimate the
227 robustness of the variable selection. We found ABx to consistently and significantly associate
228 with OS in bladder cancer, melanoma and RCC, but not in HNSC, NSCLC, or sarcoma. The HR
229 was above 1 in each of the cancers where ABx was a consistently-selected covariate.
230 Melanoma was notable in that all variables were consistently selected, with ABx showing the
231 highest HRs.

232 **The relationship between ABx, OS, and the microbiome**

233 The bacterial taxa that showed the strongest enrichment in responders or non-
234 responders to ICIs were selected from the literature and combined into a phylogenetic tree
235 (**Figure 5**) (1–3). The taxa spanned several phyla and few ranks were consistently enriched in
236 either responders or non-responders. For example, Firmicutes was found to be enriched in

237 responders (1), but within the phylum are several taxa found to be enriched in non-responders
238 (2,3). An exception to this was Bacteroidetes, which was found to be enriched in non-
239 responders and each of the four species in the phylum were also enriched in non-responders
240 (1,3). We performed a literature review of ABx susceptibilities for each of these taxa to estimate
241 whether the size of the HR of the ABx would relate to the taxa for which it is active. For
242 example, an ABx that target only bacteria enriched in non-responders may be beneficial
243 because it may shift the community toward those taxa enriched in responders. On the other
244 hand, if the overall diversity of the microbiome is important, broad-spectrum ABx may have
245 higher HRs than narrow-spectrum.

246 The ABx class with the largest HR across all cancers was the β -lactams. Within this
247 group category are the cephalosporins, which have a relatively narrow spectrum of activity and
248 a unique pattern relative to other ABx classes. The cephalosporins are ineffective against the
249 Bacteroidetes, found to be enriched in non-responders, but so were ABx such as vancomycin
250 and sulfamethoxazole-trimethoprim (SXT). However, unlike vancomycin and SXT,
251 cephalosporins effectively target *A. muciniphila*, which was shown to causally modify response
252 to ICIs. Cephalosporins are also ineffective against several Firmicutes, similar to clindamycin,
253 macrolides and metronidazole (**Figure 5**).

254

255 **DISCUSSION**

256 The effects of medications or other variables are difficult to parse in a dynamic setting
257 such as during treatment for cancer. We used a variety of methods to show that ABx and CS
258 are significantly associated with decreased OS in several cancer types and that these results
259 are consistent with mediation via the gut microbiome.

260 The association of CS with ICI response and OS remains controversial. Our observed
261 association is consistent with other observations of decreased OS in NSCLC (8). However,
262 Ricciuti et al showed no effect of CS on OS in NSCLC when given on the same day as ICI start,
263 when the CS was prescribed for reasons other than “cancer-related palliative indications” (24).
264 Our records lack some variables needed to replicate those results, however our results are
265 consistent with aspects those findings. For example, dexamethasone treatment showed a
266 strong negative association with OS across several cancer types, consistent with its use for
267 brain metastases and anorexia, which are all indicators of poor clinical outcome. On the other
268 hand, several of our analyses demonstrated associations between CS and OS that may not be
269 due to selecting a sub-cohort with a poor prognosis. Our first causal strategy, the time analysis,
270 showed similar results when restricting CS medications to a single day, but a larger effect when
271 a wider time window was used (**Table 2**). Our second causal strategy, controlling for covariates,
272 cannot be directly compared because our dataset did not include central nervous system
273 metastases. However, when we control for metastatic stage and PS, the CS association
274 remains. Our third causal strategy, comparisons between cancers, shows that the CS
275 association with OS is observed in cancers for which brain metastases are not common, such
276 as RCC, and for specific CS not typically used for brain metastases, such as
277 methylprednisolone in HNSC. This suggests that understanding the association between CS
278 and the response to ICIs may require more granular assessment of CS types (i.e. rather than
279 collapsing to 10 mg prednisone equivalent) and cancers.

280 We applied the same logical framework to ABx treatment to demonstrate an effect on
281 OS. Unlike CS, the majority of studies have found an association between ABx use and ICI
282 response, independent of the time window (**Table 2**). First, our longitudinal analysis showed a
283 global maximum HR well before the start of ICIs, consistent with the ABx effects persisting for
284 long periods. Given this result, it is unlikely that acute illnesses drive the association between

285 ABx and OS. Second, when controlling for illness-related covariates that report on the overall
286 health status of the individual, e.g. PS, the effect of ABx remained significant. Third, the
287 associations of ABx and OS were observed across cancer types (e.g. patients with bladder
288 cancer versus melanoma). A larger fraction of bladder cancer patients were treated with ABx
289 than any other cancer (56%), consistent with their use for urinary tract or as prophylaxis for
290 invasive urologic procedures. On the other hand, melanoma patients treated with ABx were the
291 smallest fraction of any cancer (25%), consistent with this population being less likely to
292 undergo procedures in which prophylactic ABx are used. It is reasonable to suspect that
293 melanoma patients treated with ABx are therefore more compromised than those not treated
294 with ABx. However, an effect of ABx remains, even for bladder cancer. Although it remains
295 probable that the cohorts who receive ABx are different from those who did not in ways that
296 have not been controlled for in analyses, these three analyses add confidence to the
297 association of ABx with OS in the context of ICIs.

298 We next related the strength of the association of ABx classes with OS and the microbes
299 that those ABx classes affect. The β -lactam ABx were shown to have the strongest association
300 with OS across cancer types. The literature review of antibiotic susceptibilities showed that this
301 diverse class is effective against the Gram-positive phylum Firmicutes. The literature review of
302 the bacterial taxa associated with response to ICIs, showed that the Firmicutes are enriched in
303 responders to ICIs. Moreover, β -lactams are not consistently effective against members of the
304 phylum Bacteroidetes, which was found to be enriched in non-responders. This suggests that
305 the β -lactams may show the strongest signal across all cancers in our dataset because they
306 disrupt the microbiome in such a way that they reduce response to ICIs by depleting the
307 Firmicutes more so than the Bacteroidetes.

308 The association between ABx prescriptions and OS that we observe is consistent with
309 direct measurements of the microbiome and response to ICIs (1–3). However, there is no

310 consensus for which taxa are enriched in the responders to ICIs (**Figure 5**). For example, there
311 is causal evidence for *Akkermansia muciniphila* increasing response to ICIs, however, it was not
312 among the most enriched in the other datasets (1–3). Nonetheless, agreement can be observed
313 at broader taxonomic characterizations. Non-responders are enriched for taxa in the phylum
314 Bacteroidetes and this is consistent with the strength of association we see for different classes
315 of ABx (1,3). Narrow spectrum β -lactams (e.g. cephalosporins), which show the strongest
316 association with OS, are effective against Firmicutes (enriched in responders) but less so
317 against Bacteroidetes (enriched in non-responders).

318 The results presented here contrast with several assumptions gathered from the
319 literature and described by the causal model (**Figure 1**). First, we found that ABx and CS are
320 the only medications significantly associated with OS, despite the inclusion of several
321 medications associated with changes to the microbiome (**Figure 2**). This may be due to the
322 types of changes incurred (e.g. PPIs may not significantly change the abundances of those taxa
323 linked to ICI response) or the strength of the effect amid the noise in the data. However, the
324 other two hypotheses were borne out by the analyses.

325 The CS and ABx medications showed an additive effect on OS, consistent with a collider
326 interaction in the model (**Figure 4A**). Also, there was an effect of ABx after controlling for many
327 covariates, consistent with its direct effect on the microbiome and the microbiome playing a role
328 in ICIs (**Figure 4B**). This result was consistent with the relationship between the strength of the
329 ABx signal and the bacterial taxa susceptible to that ABx (**Figure 5**).

330 **Limitations**

331 A key challenge in this and other retrospective analyses is inferring causal relationships
332 in non-randomized cohorts. For example, patients who receive medications such as antibiotics
333 may be quite different from those who do not. However, it is difficult to imagine an ethical trial

334 that could randomize treatment with ABx in this setting. Therefore, retrospective analyses may
335 be the best option until direct measurements of the microbiome are widely available. We used a
336 variety of methods to show that ABx and CS are significantly associated with decreased OS
337 across a variety of cancers and that these results are consistent with a role for the gut
338 microbiome.

339 Our study remains limited by being unable to account for important factors known to
340 affect OS in the context of ICI treatment. For example, the complete ABx history of patients --
341 much longer than the windows reported here -- are very likely of consequence. Several groups
342 have studied the recovery of microbiome diversity following ABx exposure and results show
343 reasonable recovery 90 days later (25,26). However, multiple courses of ABx prevented such a
344 recovery; i.e. diversity returned to baseline after one treatment with ABx, but not after a second
345 ABx treatment within 60 days (27). It is therefore possible that individuals who show extreme
346 effects of ABx treatment are beyond the time scale of this study. Without baseline microbiome
347 diversity measures we are unable to capture such information. Similarly, estimating the effects
348 of ABx on communities from data on microbes in isolation is, at best, approximate. A better
349 understanding of how ABx affect complex communities is needed. Other limitations include our
350 small sample size relative to the heterogeneity in the data. Future directions should capture
351 variables such as other co-morbidities or the presence of brain metastases, tumor biomarkers
352 such as tumor mutational burden and PD-1/PDL-1 status, and outcome variables like ICI
353 response or the number of tumor-infiltrating lymphocytes.

354

355 **CONCLUSIONS**

356 ABx and CS, but not other medications known to affect the microbiome, are associated
357 with reduced OS when administered near the start of ICI treatment. Our results show this finding

358 several cancer types, and for several subclasses of these drugs. These results are consistent
359 with a role of the microbiome in response to ICIs and identify clinical settings where the
360 microbiome is likely to play the largest role, namely NSCLC, melanoma, RCC, HNSC, and
361 bladder cancer. A clear understanding of which microbes are important for ICI responses and in
362 what cancers will require the collection of microbiome samples across a wide variety of clinical
363 settings. However, some information can be gathered by indirect means, which identifies the
364 settings where the microbiome is likely to have the greatest effects. Medications that affect the
365 microbiome given concomitantly with ICIs provide evidence for where microbes play a role.
366 Further work is needed to identify which microbes are important and identify solutions to
367 mitigate these effects and perhaps promote greater response to ICIs.

368

369 **LIST OF ABBREVIATIONS**

370 ICIs: Immune Checkpoint Inhibitors

371 OS: Overall Survival

372 ABx: Antibiotics

373 CS: Corticosteroids

374 PS: Eastern Cooperative Oncology Group Performance Status

375 BMI: Body Mass Index

376 NSCLC: Non-Small Cell Lung Cancer

377 RCC: Renal Cell Carcinoma

378 HNSC: Head and Neck Squamous Cell Carcinoma

379

380 **DECLARATIONS**

381 **Ethic Approval and Consent to Participate**

382 Data from this work were collected under an IRB-approved retrospective study (OSU-
383 2016C0070, OSU-2017C0063).

384 **Consent for Publication**

385 Not applicable.

386 **Availability of Data and Materials**

387 Scripts to reproduce all figures and analyses can be found at

388 <https://github.com/spakowiczlab/co-med-io>.

389 **Competing Interests**

390 DHO has a consulting or advisory role to L&M Policy Research and AstraZeneca. DHO
391 has research funding from Bristol-Myers Squibb, Palobiofarma, Merck Sharp & Dohme and
392 Genentech/Roche. DHO received travel, accommodations and/or expenses from AstraZeneca.
393 DPC is on the advisory board of Abbvie, AMGEN, Ariad, AZ, Biocept, BI, BMS, Celgene, EMD
394 Serono, Genentech, Gritstone, Helsinn, Inivata, Inovio, Janssen, Loxo Oncology, Merck, MSD,
395 Pfizer, Roche, Takeda, and Trinity. DPC received honoraria from AstraZeneca and Nexus
396 Oncology. DPC is a consultant for Abbvie, Agenus, Ariad, Celgene, Genentech, Incyte, Inivata,
397 Janssen, Kyowa Kirin, Loxo, MSD, Novartis, Pfizer and Takeda.

398 **Funding**

399 This project was supported by The Ohio State University Center for Clinical and
400 Translational Science grant support (National Center for Advancing Translational Sciences,
401 Grant 8UL1TR000090-05) and a P30 CCSG award (2 P30 CA016058-42). Daniel Spakowicz is
402 supported by a Pelotonia New Investigator Award and Carolyn Presley is a Paul Calabresi
403 Scholar supported by the OSU K12 Training Grant for Clinical Faculty Investigators (5K12
404 CA133250-09). No funding body was involved in the design of the study or the collection,
405 analysis, or interpretation of data, or in writing the manuscript.

406 **Author's Contributions**

407 MH, GT, SP, JTB, CFV, KLK, SH, JP, DQ, GAO, MG, CP and DHO collected the data.
408 RH, MM, JB, LW, LL, DPC, DHO and DS analyzed the data and generated the figures and
409 tables. DS, RH and DHO wrote the manuscript. All authors read and approved the final
410 manuscript.

411 **Acknowledgements**

412 This work was performed on the Ohio Supercomputer Center servers (Owens, Pitzer;
413 Project PA1490 awarded to Daniel Spakowicz). The authors would like to thank Stephanie

414 Fortier (Division of Medical Oncology, The Ohio State University; ORCID 0000-0002-2380-
415 2378) for critically reviewing and editing the manuscript.

416

417 REFERENCES

- 418 1. Gopalakrishnan V, Spencer CN, Nezi L, Reuben A, Andrews MC, Karpinets TV, et al. Gut
419 microbiome modulates response to anti-PD-1 immunotherapy in melanoma patients.
420 Science. 2018 Jan 5;359(6371):97–103.
- 421 2. Matson V, Fessler J, Bao R, Chongsuwat T, Zha Y, Alegre M-L, et al. The commensal
422 microbiome is associated with anti-PD-1 efficacy in metastatic melanoma patients.
423 Science. 2018 Jan 5;359(6371):104–8.
- 424 3. Routy B, Le Chatelier E, Derosa L, Duong CP, Alou MT, Daillère R, et al. Gut microbiome
425 influences efficacy of PD-1–based immunotherapy against epithelial tumors. Science.
426 2018;359(6371):91–97.
- 427 4. Leach DR, Krummel MF, Allison JP. Enhancement of Antitumor Immunity by CTLA-4
428 Blockade. Science. 1996 Mar 22;271(5256):1734–6.
- 429 5. Chen P-L, Roh W, Reuben A, Cooper ZA, Spencer CN, Prieto PA, et al. Analysis of
430 Immune Signatures in Longitudinal Tumor Samples Yields Insight into Biomarkers of
431 Response and Mechanisms of Resistance to Immune Checkpoint Blockade. Cancer
432 Discov. 2016;6(8):827–37.
- 433 6. Limagne E, Richard C, Thibaudin M, Fumet J-D, Truntzer C, Lagrange A, et al. Tim-
434 3/galectin-9 pathway and mMDSC control primary and secondary resistances to PD-1
435 blockade in lung cancer patients. Oncoimmunology. 2019;8(4):e1564505.
- 436 7. Huang AC, Orlowski RJ, Xu X, Mick R, George SM, Yan PK, et al. A single dose of
437 neoadjuvant PD-1 blockade predicts clinical outcomes in resectable melanoma. Nat Med.
438 2019;25(3):454–61.
- 439 8. Arbour KC, Mezquita L, Long N, Rizvi H, Auclin E, Ni A, et al. Impact of Baseline Steroids
440 on Efficacy of Programmed Cell Death-1 and Programmed Death-Ligand 1 Blockade in
441 Patients With Non–Small-Cell Lung Cancer. JCO. 2018 Oct;36(28):2872–8.
- 442 9. Rogers MAM, Aronoff DM. The influence of non-steroidal anti-inflammatory drugs on the
443 gut microbiome. Clinical Microbiology and Infection. 2016 Feb 1;22(2):178.e1-178.e9.
- 444 10. Imhann F, Bonder MJ, Vich Vila A, Fu J, Mujagic Z, Vork L, et al. Proton pump inhibitors
445 affect the gut microbiome. Gut. 2016 May;65(5):740–8.
- 446 11. Csardi G, Nepusz T. The igraph software package for complex network research.
447 InterJournal. 2006;Complex Systems:1695.

- 448 12. Textor J, Zander B van der. dagitty: Graphical Analysis of Structural Causal Models
449 [Internet]. 2016. Available from: <https://CRAN.R-project.org/package=dagitty>
- 450 13. Harris PA, Taylor R, Thielke R, Payne J, Gonzalez N, Conde JG. Research electronic data
451 capture (REDCap)--a metadata-driven methodology and workflow process for providing
452 translational research informatics support. *J Biomed Inform.* 2009 Apr;42(2):377–81.
- 453 14. Kassambara A, Kosinski M. survminer: Drawing Survival Curves using “ggplot2” [Internet].
454 2018. Available from: <https://CRAN.R-project.org/package=survminer>
- 455 15. R Core Team. R: A Language and Environment for Statistical Computing [Internet].
456 Vienna, Austria: R Foundation for Statistical Computing; 2017. Available from:
457 <https://www.R-project.org/>
- 458 16. Zeileis A, Hothorn T. Diagnostic checking in regression relationships. 2002 [cited 2017
459 May 8]; Available from: [http://idg.pl/mirrors/CRAN/web/packages/lmtest/vignettes/lmtest-](http://idg.pl/mirrors/CRAN/web/packages/lmtest/vignettes/lmtest-intro.pdf)
460 [intro.pdf](http://idg.pl/mirrors/CRAN/web/packages/lmtest/vignettes/lmtest-intro.pdf)
- 461 17. Therneau TM. A Package for Survival Analysis in S [Internet]. 2015. Available from:
462 <https://CRAN.R-project.org/package=survival>
- 463 18. Terry M. Therneau, Patricia M. Grambsch. Modeling Survival Data: Extending the Cox
464 Model. New York: Springer; 2000.
- 465 19. Wickham H. ggplot2: elegant graphics for data analysis [Internet]. Springer Science &
466 Business Media; 2009 [cited 2015 Dec 14]. Available from:
467 [https://books.google.com/books?hl=en&lr=&id=bes-](https://books.google.com/books?hl=en&lr=&id=bes-AAAAQBAJ&oi=fnd&pg=PR5&dq=ggplot2&ots=SAc_My0SQR&sig=kxI4eEM08tk2hMmUo5UgBJQE4AQ)
468 [AAAAQBAJ&oi=fnd&pg=PR5&dq=ggplot2&ots=SAc_My0SQR&sig=kxI4eEM08tk2hMmUo](https://books.google.com/books?hl=en&lr=&id=bes-AAAAQBAJ&oi=fnd&pg=PR5&dq=ggplot2&ots=SAc_My0SQR&sig=kxI4eEM08tk2hMmUo5UgBJQE4AQ)
469 [5UgBJQE4AQ](https://books.google.com/books?hl=en&lr=&id=bes-AAAAQBAJ&oi=fnd&pg=PR5&dq=ggplot2&ots=SAc_My0SQR&sig=kxI4eEM08tk2hMmUo5UgBJQE4AQ)
- 470 20. Wishart DS, Feunang YD, Guo AC, Lo EJ, Marcu A, Grant JR, et al. DrugBank 5.0: a
471 major update to the DrugBank database for 2018. *Nucleic Acids Res.* 2018
472 04;46(D1):D1074–82.
- 473 21. Gehlenborg N. UpSetR: A More Scalable Alternative to Venn and Euler Diagrams for
474 Visualizing Intersecting Sets [Internet]. 2019. Available from: [https://CRAN.R-](https://CRAN.R-project.org/package=UpSetR)
475 [project.org/package=UpSetR](https://CRAN.R-project.org/package=UpSetR)
- 476 22. Friedman J, Hastie T, Tibshirani R. Regularization Paths for Generalized Linear Models via
477 Coordinate Descent. *Journal of Statistical Software.* 2010;33(1):1–22.
- 478 23. Simon N, Friedman J, Hastie T, Tibshirani R. Regularization Paths for Cox’s Proportional
479 Hazards Model via Coordinate Descent. *Journal of Statistical Software.* 2011;39(5):1–13.
- 480 24. Ricciuti B, Dahlberg SE, Adeni A, Sholl LM, Nishino M, Awad MM. Immune Checkpoint
481 Inhibitor Outcomes for Patients With Non–Small-Cell Lung Cancer Receiving Baseline
482 Corticosteroids for Palliative Versus Nonpalliative Indications. *JCO.* 2019 Jun
483 17;JCO.19.00189.
- 484 25. Nandi T, Lee IR, Ghosh T, Ng AHQ, Chng KR, Li C, et al. Gut microbiome recovery after
485 antibiotic usage is mediated by specific bacterial species. *bioRxiv.* 2018 Jun 19;350470.

- 486 26. Pérez-Cobas AE, Gosalbes MJ, Friedrichs A, Knecht H, Artacho A, Eismann K, et al. Gut
487 microbiota disturbance during antibiotic therapy: a multi-omic approach. *Gut*. 2013 Nov
488 1;62(11):1591–601.
- 489 27. Dethlefsen L, Relman DA. Incomplete recovery and individualized responses of the human
490 distal gut microbiota to repeated antibiotic perturbation. *Proceedings of the National
491 Academy of Sciences*. 2011 Mar 15;108(Supplement_1):4554–61.
- 492 28. Zhao S, Gao G, Li W, Li X, Zhao C, Jiang T, et al. Antibiotics are associated with
493 attenuated efficacy of anti-PD-1/PD-L1 therapies in Chinese patients with advanced non-
494 small cell lung cancer. *Lung Cancer*. 2019 Apr;130:10–7.
- 495 29. Elkrief A, El Raichani L, Richard C, Messaoudene M, Belkaid W, Malo J, et al. Antibiotics
496 are associated with decreased progression-free survival of advanced melanoma patients
497 treated with immune checkpoint inhibitors. *Oncoimmunology*. 2019;8(4):e1568812.
- 498 30. Chheda ZS, Sharma RK, Jala VR, Luster AD, Haribabu B. Chemoattractant Receptors
499 BLT1 and CXCR3 Regulate Antitumor Immunity by Facilitating CD8⁺ T Cell Migration into
500 Tumors. *Ji*. 2016 Sep 1;197(5):2016–26.
- 501 31. Wu T, Yang L, Jiang J, Ni Y, Zhu J, Zheng X, et al. Chronic glucocorticoid treatment
502 induced circadian clock disorder leads to lipid metabolism and gut microbiota alterations in
503 rats. *Life Sciences*. 2018 Jan;192:173–82.
- 504 32. Garant A, Guilbault C, Ekmekjian T, Greenwald Z, Murgoi P, Vuong T. Concomitant use of
505 corticosteroids and immune checkpoint inhibitors in patients with hematologic or solid
506 neoplasms: A systematic review. *Critical Reviews in Oncology/Hematology*. 2017
507 Dec;120:86–92.
- 508 33. Lozupone CA, Stombaugh JI, Gordon JI, Jansson JK, Knight R. Diversity, stability and
509 resilience of the human gut microbiota. *Nature*. 2012 Sep 13;489(7415):220–30.
- 510 34. González-Amaro R, Sánchez-Madrid F. Drugs, inflammation and cell adhesion receptors.
511 *Expert Opinion on Pharmacotherapy*. 2001 Jan;2(1):3–17.
- 512 35. Maier L, Pruteanu M, Kuhn M, Zeller G, Telzerow A, Anderson EE, et al. Extensive impact
513 of non-antibiotic drugs on human gut bacteria. *Nature*. 2018 Mar;555(7698):623–8.
- 514 36. Fucà G, Galli G, Poggi M, Lo Russo G, Proto C, Imbimbo M, et al. Modulation of peripheral
515 blood immune cells by early use of steroids and its association with clinical outcomes in
516 patients with metastatic non-small cell lung cancer treated with immune checkpoint
517 inhibitors. *ESMO Open*. 2019 Feb;4(1):e000457.
- 518 37. Derosa L, Hellmann MD, Spaziano M, Halpenny D, Fidelle M, Rizvi H, et al. Negative
519 association of antibiotics on clinical activity of immune checkpoint inhibitors in patients with
520 advanced renal cell and non-small-cell lung cancer. *Annals of Oncology*. 2018 Jun
521 1;29(6):1437–44.
- 522 38. Hussain M, Javeed A, Ashraf M, Al-Zaubai N, Stewart A, Mukhtar MM. Non-steroidal anti-
523 inflammatory drugs, tumour immunity and immunotherapy. *Pharmacological Research*.
524 2012 Jul;66(1):7–18.

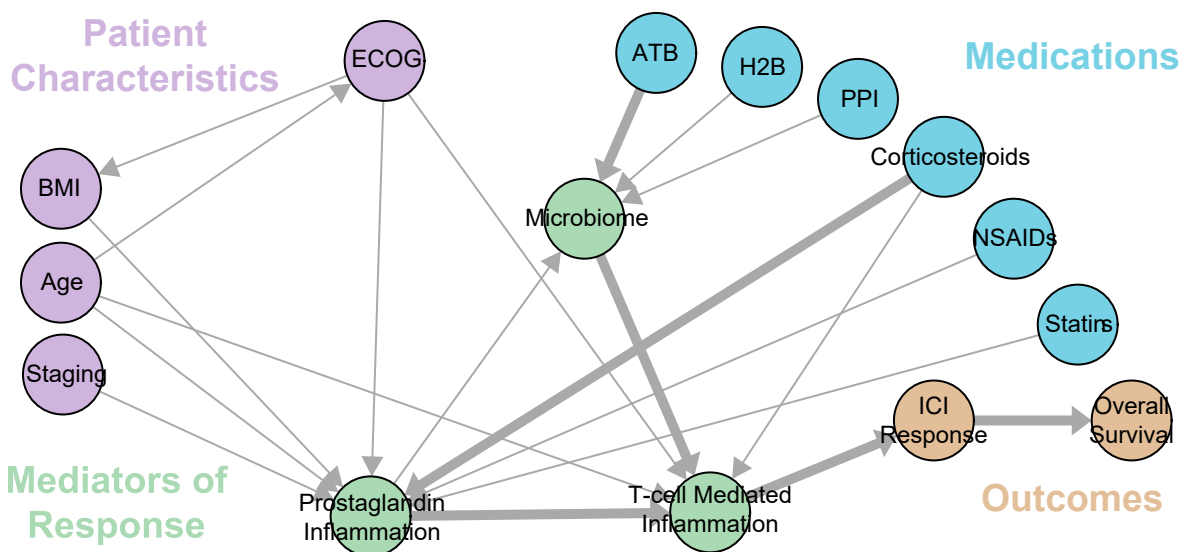
- 525 39. Wang D, DuBois RN. Prostaglandins and cancer. *Gut*. 2006 Jan;55(1):115–22.
- 526 40. Jackson MA, Goodrich JK, Maxan M-E, Freedberg DE, Abrams JA, Poole AC, et al. Proton
527 pump inhibitors alter the composition of the gut microbiota. *Gut*. 2016 May;65(5):749–56.
- 528 41. Boursi B, Mamtani R, Haynes K, Yang Y-X. Recurrent antibiotic exposure may promote
529 cancer formation – Another step in understanding the role of the human microbiota?
530 *European Journal of Cancer*. 2015 Nov;51(17):2655–64.
- 531 42. Lidar M, Giat E, Garelick D, Horowitz Y, Amital H, Steinberg-Silman Y, et al. Rheumatic
532 manifestations among cancer patients treated with immune checkpoint inhibitors.
533 *Autoimmunity Reviews*. 2018 Mar;17(3):284–9.
- 534 43. Leonard J, Marshall JK, Moayyedi P. Systematic Review of the Risk of Enteric Infection in
535 Patients Taking Acid Suppression. *Am J Gastroenterology*. 2007 Sep;102(9):2047–56.
- 536 44. Park JH, McMillan DC, Horgan PG, Roxburgh CS. The impact of anti-inflammatory agents
537 on the outcome of patients with colorectal cancer. *Cancer Treatment Reviews*. 2014
538 Feb;40(1):68–77.
- 539 45. Huang EY, Inoue T, Leone VA, Dalal S, Touw K, Wang Y, et al. Using Corticosteroids to
540 Reshape the Gut Microbiome: Implications for Inflammatory Bowel Diseases. *Inflamm
541 Bowel Dis*. 2015 May;21(5):963–72.
- 542 46. Jala VR, Bodduluri SR, Satpathy SR, Chheda Z, Sharma RK, Haribabu B. The yin and
543 yang of leukotriene B4 mediated inflammation in cancer. *Semin Immunol*. 2017;33:58–64.
- 544 47. Zitvogel L, Ayyoub M, Routy B, Kroemer G. Microbiome and Anticancer
545 Immunosurveillance. *Cell*. 2016 Apr 7;165(2):276–87.

546

547

548 **FIGURES AND TABLES**

549 **Figure 1. Causal model for the effect of concomitant medications on Immunotherapy**
550 **Response and Overall Survival.** Numbers along edges refer to references supporting the
551 connection. Hypothesized dominant pathways are shown in heavily-weighted edges. (1–3,8–
552 10,27–47)



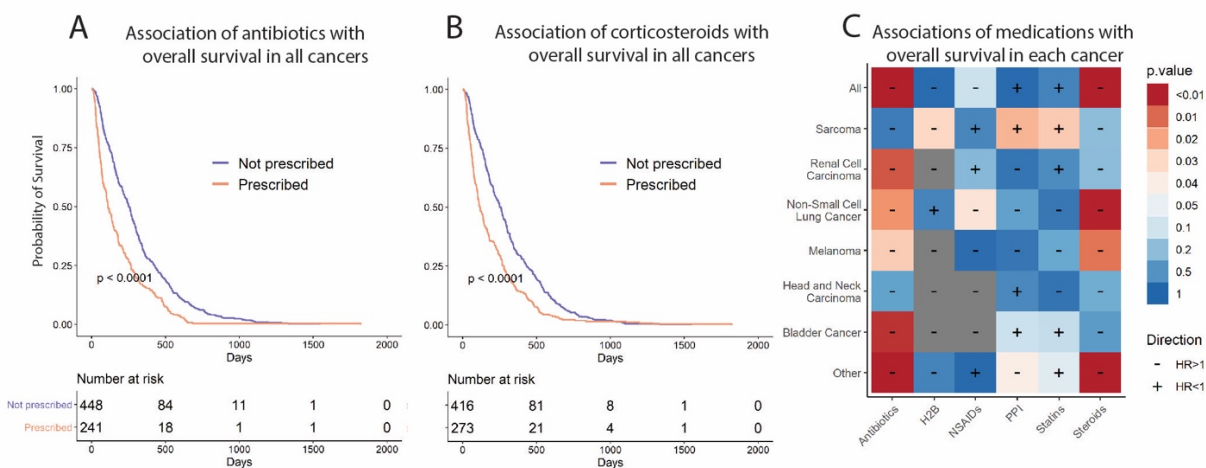
553

554

Table 1. Cohort characteristics

Overall n	690
BMI (mean (SD))	27.79 (6.66)
Staging (%)	
1	1 (0.2)
2	4 (0.7)
3	44 (7.2)
4	548 (90.0)
Unknown	12 (2.0)
Age (mean (SD))	62.25 (13.21)
Sex = Male (%)	403 (58.4)
Cancer (%)	
Bladder Cancer	32 (4.9)
Head and Neck Carcinoma	42 (6.5)
Melanoma	185 (28.5)
Non-Small Cell Lung Cancer	152 (23.4)
Renal Cell Carcinoma	65 (10.0)
Sarcoma	21 (3.2)
Other	152 (23.4)
Immunotherapy (%)	
Atezolizumab	22 (3.2)
Durvalumab	12 (1.7)
Durvalumab + Tremelimumab	6 (0.9)
Ipilimumab	126 (18.3)
Nivolumab	364 (52.8)
Nivolumab + Ipilimumab	37 (5.4)
Nivolumab + Chemotherapy	7 (1.0)
Pembrolizumab	104 (15.1)
Tremelimumab	3 (0.4)
Other	9 (1.3)
ECOG (%)	
0	185 (31.0)
1	272 (45.6)
2	113 (19.0)
> 2	26 (4.4)
ABx within 28 days of ICI (mean (SD))	0.36 (0.48)
CS within 28 days of ICI (mean (SD))	0.40 (0.49)

556 **Figure 2. The effect of medications at the start of ICI treatment across all cancers for A)**
 557 **Antibiotics, B) Corticosteroids, and C) other medications.** The cell color indicates the p-
 558 value of the Kaplan-Meier curve and the “+” or “-” the direction of the HR, in reference to its
 559 association with OS (i.e. a “-” indicates an association with decreased OS, therefore a HR > 1).

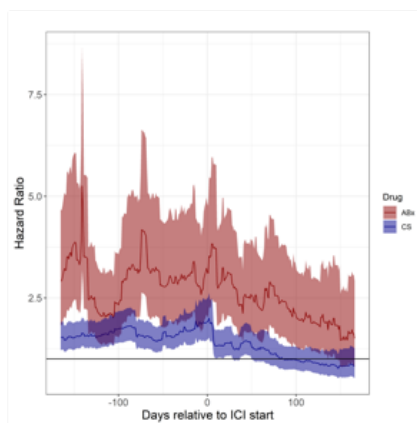


560

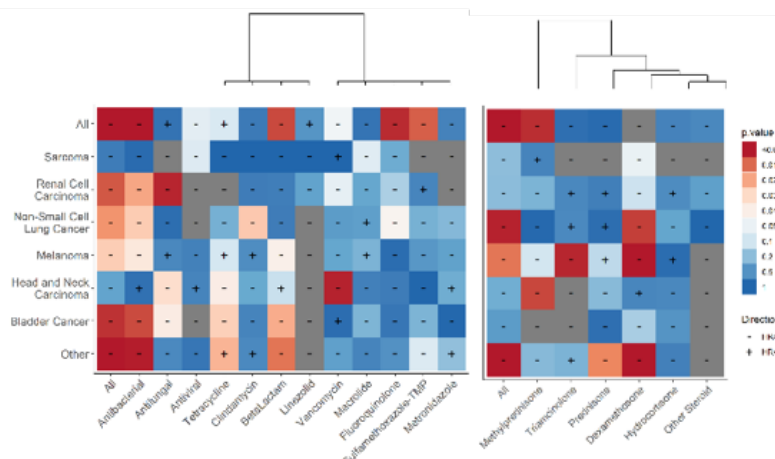
561

562 **Figure 3. Associations of ABx and CS over time and by drug class.** A) Hazard ratios with
 563 95% confidence intervals of a Cox Proportional-Hazards model comparing individuals treated
 564 with ABx or CS during a 30-day sliding window compared to individuals who did not receive ABx
 565 or CS, respectively. The significance and direction of associations of Cox Proportional Hazards
 566 models by (B) ABx or (C) CS class and cancer, using a window 28 days around ICI treatment
 567 start.

A) Hazard ratio of ABx and CS prescribed at varying days from ICI



B) Hazard ratio and significance of ABx or CS class association with OS

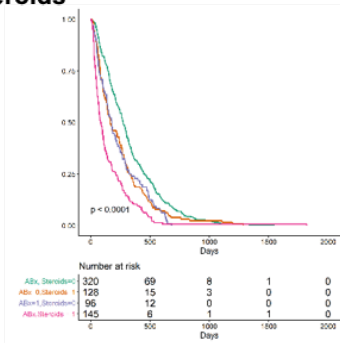


568

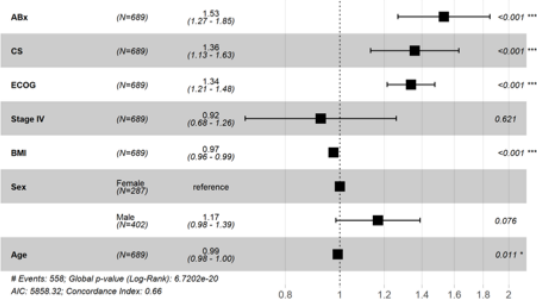
569

570 **Figure 4. Combined models for ABx and CS and controlling for covariates.** (A) Kaplan-
 571 Meier curves for ABx and CS in combination. B) Cox Proportional Hazards model incorporating
 572 both ABx and CS as well as several covariates. C) Cox-LASSO models for each cancer
 573 showing the hazard ratios estimated for covariates and the number of times the covariate was
 574 included in the model. The regularization parameter was selection by 10-fold cross validation,
 575 and then the robustness was assessed by 1000 bootstrap replicates using different random
 576 samples of the data.

A) Survival curves comparing effects of ABx and steroids



B) Combined model controlling for covariates



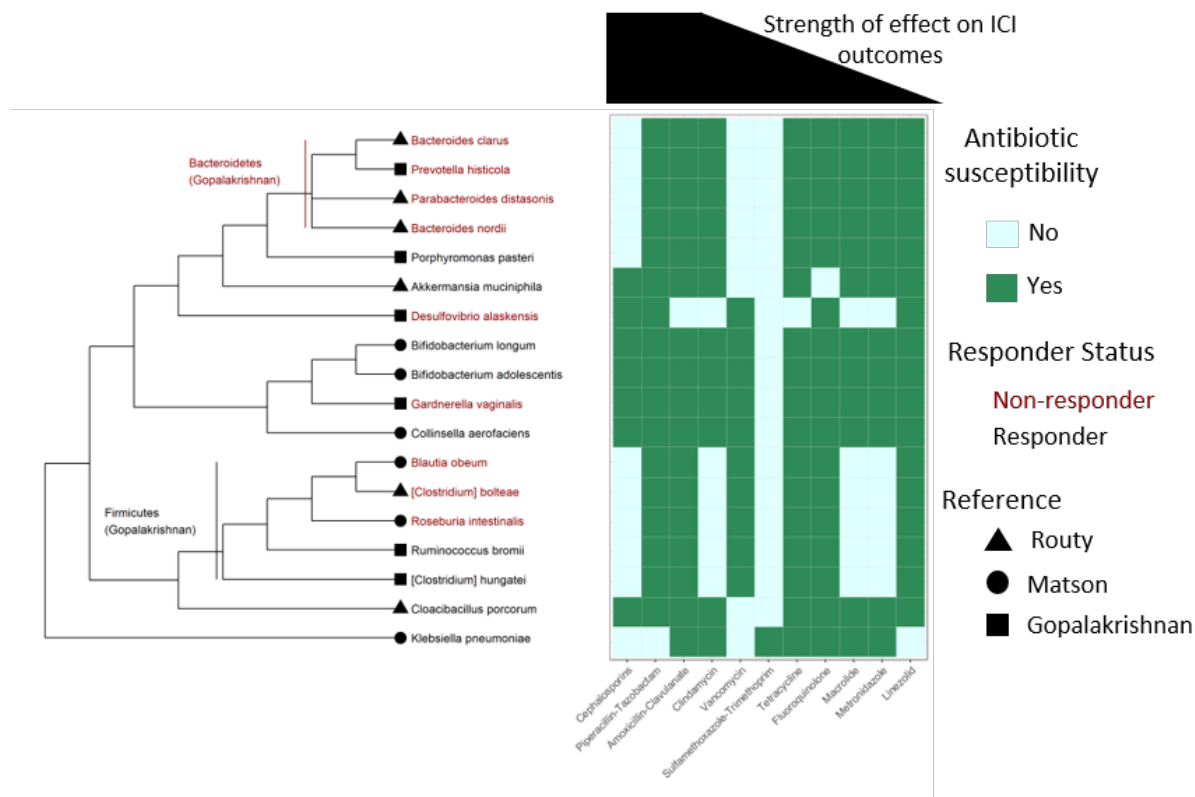
C) Cox-LASSO models with additional covariates for each cancer



577

578

579 **Figure 5. Relating the ABx effect to microbes enriched in responders to ICIs. A**
 580 dendrogram of the microbes recently shown to be most enriched in responders (black)
 581 responders (red), are related to known ABx susceptibilities (references for each cell in **Table**
 582 **S1**). The ABx are ordered by hazard ratio across all cancers (i.e. β -lactams showed the largest
 583 hazard ratio and linezolid the smallest).



584

585

586 **SUPPLEMENTARY FIGURES AND TABLES**

587 **Figure S1. Causal diagram with references.**

588 **Figure S2. Number of medications prescribed across all cancers and the frequency of**
589 **multiple medications.**

590 **Figure S3. Number of antibiotics, separated by class, prescribed across all cancers and**
591 **the frequency of multiple antibiotics.**

592 **Figure S4. Number of corticosteroids, separated by class, prescribed across all cancers**
593 **and the frequency of multiple antibiotics.**

594 **Table S1. References for the antibiotic susceptibilities of bacterial taxa found to be**
595 **enriched in responders or non-responders to ICI therapy**