

Multidimensional factors predicting exclusive breastfeeding in Ethiopia: evidence from a meta-analysis of studies in the past 10 years

Tesfa Dejenie Habtewold^{1,2*}, Aklilu Endalamaw³, Shimels Hussien Mohammed⁴, Henok Mulugeta⁵, Getenet Dessie⁶, Getachewu Mullu Kassa⁵, Yared Asmare¹, Mesfin Tadesse⁷, Yihun Mulugeta Alemu⁸, Niguse Tadesse Sharew¹, Abera Kenay Tura^{9,10}, Balewgizie Sileshi Tegegne², Sisay Mulugeta Alemu⁶

¹Department of Nursing, College of Medicine and Health Science, Debre Berhan University, Debre Berhan, Ethiopia.

²Department of Epidemiology, University Medical Centre Groningen, University of Groningen, Groningen, The Netherlands.

³Department of Pediatrics and Child Health Nursing, College of Medicine and Health Sciences, Bahir Dar University, Bahir Dar, Ethiopia.

⁴Department of Community Nutrition, School of Nutritional Sciences and Dietetics, Tehran University of Medical Sciences-International Campus (TUMS-IC), Tehran, the Islamic Republic of Iran.

⁵Department of Nursing, College of Health Science, Debre Markos University, Debre Markos, Ethiopia.

⁶Department of Nursing, School of Health Science, College of Medicine and Health Science, Bahir Dar University, Bahir Dar, Ethiopia.

⁷Department of Midwifery, College of Medicine and Health Science, Debre Berhan University, Debre Berhan, Ethiopia.

⁸Department of Public Health, Bahir Dar University, Bahir Dar, Ethiopia.

⁹Department of Obstetrics and Gynaecology, University Medical Centre Groningen, University of Groningen, Groningen, The Netherlands.

¹⁰School of Nursing and Midwifery, College of Health and Medical Sciences, Haramaya University, Harar, Ethiopia.

¹¹Department of Public Health, University Medical Centre Groningen, University of Groningen, Groningen, The Netherlands.

* =Corresponding author

Tesfa Dejenie

Email: tesfadej2003@gmail.com

Abstract

Background: In Ethiopia, the prevalence of exclusive breastfeeding (EBF) is 60.1%, which is lower than the national Health Sector Transformation Plan 2016-2020, National Nutrition Program 2016–2020 and WHO global target. This may be attributed to multidimensional factors.

Objective: The aim of this meta-analysis was to investigate the association between EBF and educational status, household income, marital status, media exposure, and parity in Ethiopia.

Methods: Databases used were PubMed, EMBASE, Web of Science, SCOPUS, CINAHL and WHO Global health library, and key terms were searched using interactive searching syntax. It was also supplemented by manual searching. Observational studies published between September 2000 and March 2019 were included. The methodological quality of studies was examined using the Newcastle-Ottawa Scale (NOS) for cross-sectional studies. Data were extracted using the Joanna Briggs Institute (JBI) data extraction tool. To obtain the pooled odds ratio (OR), extracted data were fitted in a random-effects meta-analysis model. Statistical heterogeneity was quantified using Cochran's Q test, τ^2 , and I^2 statistics. Additional analysis conducted includes Jackknife sensitivity analysis, cumulative meta-analysis, and meta-regression analysis.

Results: Out of 553 studies retrieved, 31 studies fulfilled our inclusion criteria. Almost all studies were conducted on mothers with newborn less than 23 months. Maternal educational status (OR = 1.39; $p = 0.03$; 95% CI = 1.03 - 1.89; $I^2 = 86.11\%$), household income (OR = 1.27; $p = 0.02$; 95% CI = 1.05 - 1.55; $I^2 = 60.9\%$) and marital status (OR = 1.39; $p = 0.02$; 95% CI = 1.05 - 1.83; $I^2 = 76.96\%$) were found to be significantly associated with EBF. We also observed an inverse dose-response relationship of EBF with educational status and income. Significant association was not observed between EBF and parity, media exposure and paternal educational status.

Conclusions: In this meta-analysis, we depicted the relevant effect of maternal education, income, and marital status on EBF. Therefore, multifaceted, effective, and evidence-based efforts are needed to increase national breastfeeding rates in Ethiopia.

Background

Optimal breastfeeding is an essential element for the satisfactory growth and development of infants and children by reducing and/or preventing morbidity and mortality related to malnutrition and infection.¹⁻⁴ Exclusive breastfeeding (EBF) significantly lowers the risk of sepsis, diarrhea and respiratory infections as evidenced by systematic review and meta-analysis.⁵ Recent estimates suggest that optimal breastfeeding could prevent around 12% deaths in under-5 children every year, representing around 800,000 lives in low- and middle-income countries.⁶ Breastfeeding has also economic and environmental advantages.⁷ EBF prevents 20% to 22% of neonatal deaths.^{2,3,8} Consequently, the Innocenti Declaration, UNICEF, World Health Organization (WHO), British Paediatric Association, American Dietetic Association, and American Academy of Pediatrics have recommended EBF for the first six months.⁹ Despite these facts, every new-born have the right to exclusively breastfeed for the first six months^{10,11} but it is suboptimal in developed and developing countries.^{12,13} Non-exclusive breastfeeding in the first 6 months of life resulted in 1.4 million deaths and 10% of the disease burden in children younger than 5 years of age.¹⁴ Overall, in low- and middle-income countries, only 37% of children younger than 6 months of age are exclusively breastfeed.¹⁵ Based on secondary data analysis of 32 Demographic and Health Surveys conducted in Sub-Saharan African countries since 2010, the prevalence of EBF is 41.0%.¹⁶ In Ethiopia, breastfeeding is a universal practice with 96% of children breastfed at some point in time.¹⁷ A meta-analysis study¹⁸ from our research group shows that the prevalence of EBF is 60.1%, which is higher than the Global Nutrition Target 5 of 50 % EBF coverage by 2025.⁹¹

Exclusively breastfeeding has been associated with parental educational status, marital status, household income, number of children, maternal age, child age, antenatal care, place of delivery, postnatal care, gender, birth order, employment status, mode of delivery and timely initiation of breastfeeding.^{8,12,19-23} However, a prospective study shows that an absence of significant association between EBF and parental education, living conditions, antenatal care follow-up, birth weight, culture, postnatal breastfeeding advice, previous breastfeeding exposure and mothers' employment.²⁴ Likewise, a systematic review of 48 studies from 14 low- and middle-income US Agency for International Development (USAID) Ending Preventable Child And Maternal Deaths (EPCMD) priority countries

identified 16 barriers of EBF.²⁵ Based on a pooled Demographic and Health Survey data sets collected in nine Sub Saharan African countries, maternal educational status, maternal employment, ANC, PNC and place of delivery were significantly associated with EBF.²⁶

In Ethiopia, a systematic review of 32 studies identified 26 factors that significantly associated with EBF and categorized into four groups – proximal, proximal-intermediate, distal-intermediate and distal. Proximal factor includes maternal educational status, mother’s knowledge on EBF, guidance and counseling, access to health facility, poor attitude, and age of newborn. Proximal-intermediate factor includes place of delivery, timely initiation of breastfeeding, intention or plan to breastfeeding, mode of delivery, breast complication, breastfeeding self-efficacy and outcome expectancy, and sex of newborn. Distal-intermediate factor includes ANC, PNC, colostrum feeding, and prelacteal feeding. Finally, distal factor includes paternal educational status, household income, marital status, parity, husband support, maternal age, place of residence and family size.¹⁸ The follow-up meta-analyses confirmed that maternal occupational status, gender of newborn, age of newborn, guidance and counseling on breastfeeding, colostrum discarding, ANC, PNC, vaginal delivery, health institution delivery, timely initiation of breastfeeding significantly increased the odds of EBF.^{18,27,28}

There is no doubt regarding the multiple benefits of breastfeeding for infants and society, in general. As a result, global initiatives such as the International Code of Marketing of Breast-milk Substitutes (referred to hereafter as ‘the Code’), the Innocenti Declaration, the Baby-Friendly Hospital Initiative (BFHI), the Millennium Development Goals, and the Global Nutrition Targets 2025 and Sustainable Development Goals have developed.^{26,29} The Ethiopian government has also endorsed and implemented these programs to reduce infant and child mortality and morbidity. A national nutrition strategy and program (NNP) has been developed and implemented in a multi-sectoral approach. The Health Sector Development Program (HSDP IV) has integrated nutrition into the Health Extension Program to improve the nutritional status of mothers and children through the Community Based Nutrition program (CBN), Health Facility Nutrition Services, and Micronutrient Interventions and Essential Nutrition Actions / Integrated Infant and Young Feeding Counseling Services.³⁰ Despite the reduced under-five mortality, the rate of malnutrition, rate of stunting and rate of underweight³¹, the rate of EBF has fallen short of the Health Sector Transformation Plan

2016-2020³⁰, National Nutrition Program 2016–2020³² and WHO global target. These drawbacks call for the need to assess multidimensional factors that affect EBF. Thus, the aim of this meta-analysis was to investigate the association between parental educational status, household income, parity, exposure to media and marital status with EBF in Ethiopia.

Methods

Protocol and registration

This systematic review and meta-analysis was conducted based on the registered (CRD42017056768) and published protocol.³³ Based on the authors' decision, the following changes were made to the published protocol.³³ Joanna Briggs Institute (JBI) tool³⁴ was used to extract the relevant data. Furthermore, cumulative meta-analysis and mixed-effects meta-regression analysis were done to reveal the trends of evidence and identify possible sources of between-study heterogeneity respectively.

Measurement variables

The outcome measurement was exclusive breastfeeding (EBF), which is the proportion of children born in the last two years who were breastfeed only breastfeed for the first six months after delivery.³⁵ Maternal educational status, paternal educational status, household income, marital status, media exposure, and parity were selected predicting factors. The selection of these factors was guided by our previous systematic review findings.¹⁸ Educational status represents the highest schooling grade achieved as per the Ethiopian educational system and categorized as 'uneducated' (including those who able to read and write without formal schooling), 'primary' (grades 1 to 8) and 'secondary and above' (grades 9 or above). Household income was categorized as 'high', 'medium' and 'low'. Because of substantial inconsistency in the reported household income, we used a harmonized qualitative way of classification of income for all included studies that reported at least three categories of household income or wealth index based on authors educational judgment. Marital status was categorized as 'currently married' and 'others' (i.e. single, divorced, widowed). Media exposure represents exposure to or ownership of any print media (newspaper, leaflet, brochure) and broadcasting (radio and television) and categorized as 'yes' and 'no'. This does not include Facebook, email, YouTube, or WhatsApp as most mothers do not have access to internet. If studies reported accessibility or exposure to more than one media tools, we extracted data on radio (as 'yes') followed by television and print media. Parity refers to the total number of births after 28 weeks and was categorized as 'primipara' if the mothers have only one birth and 'multipara' if the mothers have at least two births.

Search for literature

Databases searched were PubMed, EMBASE, Web of Science, SCOPUS, CINAHL and WHO Global health library. The interactive searching syntax was developed for all databases in consultation with librarian, experts on literature searching (Supplementary file 1). We further manually searched the table of contents of Ethiopian Journal of Health Development, Ethiopian Journal of Health Sciences, Ethiopian Journal of Reproductive Health, International Breastfeeding Journal, BMC Pregnancy and Childbirth, BMC Public Health, BMC Paediatrics, Nutrition Journal and Italian Journal of Paediatrics. We also searched cross-references and grey literature on Addis Ababa University institutional research collection repository database. The last search was done in March 2019.

Inclusion and exclusion criteria

The studies were included when they met the following inclusion criteria: (1) observational studies, such as cross-sectional, case-control and cohort studies; (2) studies conducted in Ethiopia; (3) studies reported on the association between EBF (i.e. operationalized based on the WHO definition) and maternal and paternal educational status, household income (at least three categories must be reported), marital status, media exposure (not exposed or no access to media category must be reported) and parity; (4) studies published from September 2000 (i.e. the time when last revision of the global breastfeeding recommendations occurred) to March 2019. Program evaluation reports, systematic reviews and meta-analyses, qualitative studies and studies on mothers with medical conditions including HIV/AIDS and pre-term or ill health newborn were excluded.

Screening and selection of studies

Initially, all identified studies were exported into RefWorks citation manager version 4.6 for Windows. Afterward, duplicate studies were deleted from further screening. Next, a pair of reviewers independently screened the abstracts and titles using Microsoft Excel spreadsheet for relevance, their compliance with our measurements of interest and against our inclusion criteria. Based on Cohen's Kappa inter-rater reliability test, the agreement between the two reviewers was 0.76 indicating substantial agreement between the two reviewers. Disagreements on the inclusion of titles or abstracts were solved through discussion and consensus. After removing irrelevant studies, full text of selected abstracts

were downloaded and reviewed for further eligibility. PRISMA flow diagram was also used to illustrate the screening and selection processes of studies.³⁶ Finally, two independent reviewers (TD and SM) extracted the following information from each included studies using Joanna Briggs Institute (JBI) data extraction tool³⁴: author name, publication year, residence, study design, study population, number of participants, source of funding, and observed data. If funding source was not explicitly mentioned, we reported as ‘not mentioned’, whereas ‘no funding’ category was used if the author explicitly mentioned there is no funding or funding not applicable. If funding was not given directly but through other donors, the original donor was mentioned. Newcastle-Ottawa Scale (NOS) for cross-sectional studies was used to examine the quality of studies and the potential risk of bias.³⁷ The scoring system, selection of cut-off value and interpretation used in this meta-analysis were published in our protocol.³³ Furthermore, we reported the results in compliance with the recommendation of Preferred Reporting Items for Systematic review and Meta-analysis (PRISMA) statement (Supplementary file 2).³⁶

Statistical analysis

To obtain the pooled odds ratio (OR), extracted data were fitted in a random-effects meta-analysis model. In addition, a cumulative meta-analysis was done to illustrate the trend of evidence regarding the effect of predictors on EBF and interpreted as stable, steadily increased/decreased, slightly increased/decreased or dramatically increased/decreased. Publication bias was assessed by subjective evaluation of the funnel plot, and then, we performed Egger’s regression statistical test to objectively confirm the presence of significant publication bias at $p\text{-value} \leq 0.01$.³⁸ We used Cochran’s Q test to test heterogeneity, τ^2 to estimate the amount of total/residual between-study variance, and I^2 statistics to measure the proportion of total variation between study due to heterogeneity.³⁹ Clinical and methodology heterogeneity were also carefully evaluated. Factors attributed to between-study heterogeneity were investigated using mixed-effects meta-regression analysis using region, residence, sample size and publication year as covariates.⁴⁰ The residual amount of heterogeneity was subtracted from the proportion of heterogeneity and divided by the total amount of heterogeneity to obtain the total amount of heterogeneity (R^2) explained by covariates. Omnibus test of moderators was applied to assess the moderation effect of these covariates. Meta-regression analysis was done only

when heterogeneity threshold (I^2) was $\geq 80\%$. Jackknife sensitivity analysis was done to examine the influence of outlier studies on the pooled OR estimate, a significance level of estimate and between-study heterogeneity.⁴¹ The study was excluded when the pooled OR estimate increased or decreased by one and changes the significance level after lifting out that study from the meta-analysis. Because of the small number of studies available for some variables, the change in heterogeneity threshold was not considered as a primary criterion to detect and excluded the outlier study. The data were analyzed using “metafor” packages in R software version 3.2.1 for Windows.⁴⁰

Results

Search results

Of 553 studies retrieved through electronic databases and manual searching, full-text of 41 studies were reviewed. 10 studies were excluded after the full-text review: three studies reported only the prevalence of EBF, and the other seven studies did not report the selected factors of our interest. Detailed characteristics of studies that reported each variable was presented in Table 1. All studies had good methodological quality (NOS score ≥ 7). One study reported more than one influencing factors. The screening and selection process has been illustrated below using the PRISMA flow diagram (Figure 1).

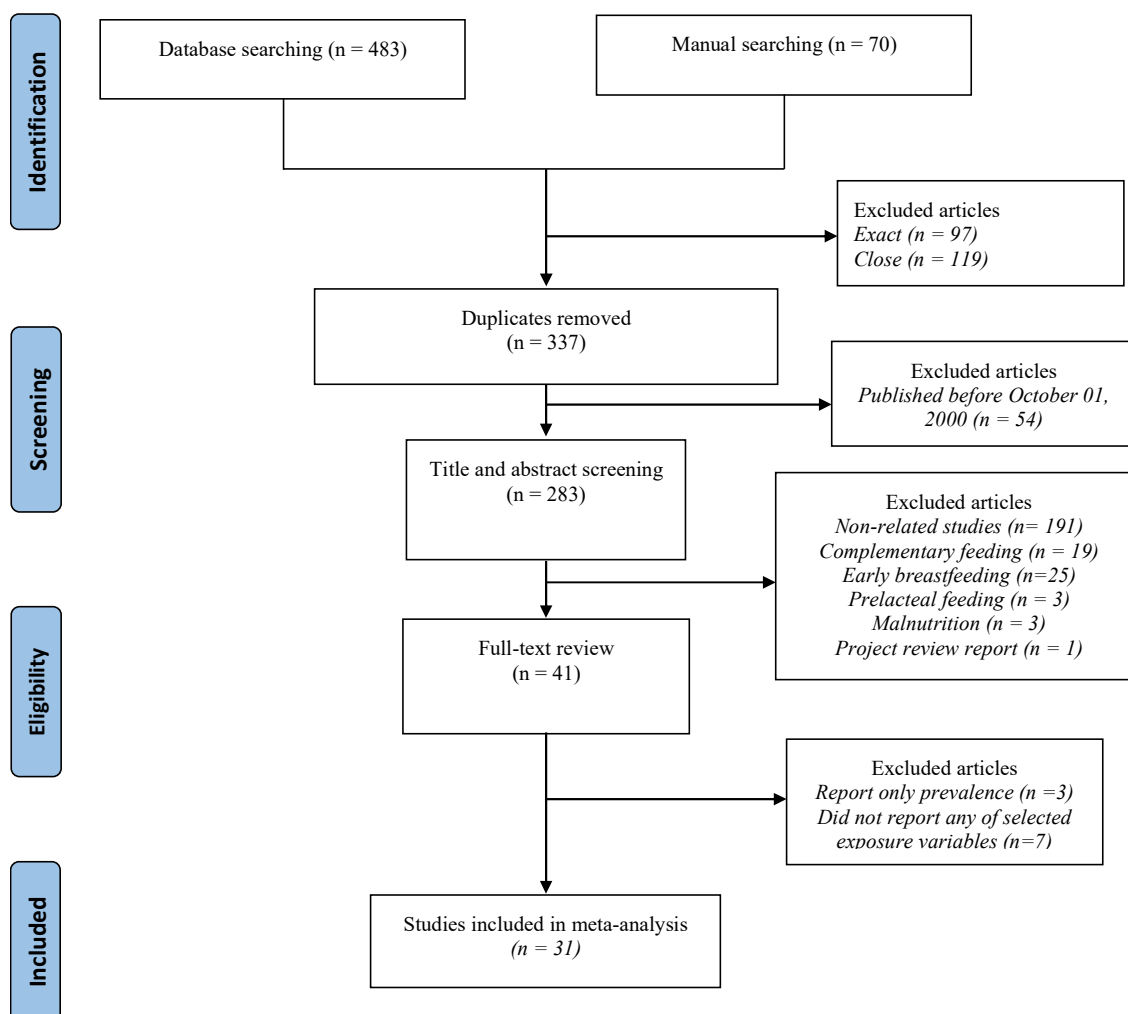


Figure 1. PRISMA flow diagram showing the schematics of literature screening and selection.

Table 1: Summary of included studies

Studies	Study area	Study design	Study population	Sample size/ Participated	Funding	Factors	Exclusive breastfeeding		
							Yes	No	Total
a. Maternal educational status									
Alemayehu et.al. 2014 ⁴²	Tigray, Axum town	Cross-sectional study	mothers who had children aged 6-12	418/418	Mekelle University	Uneducated	16	32	48
						Primary	87	127	214
						Secondary and above	74	88	162
						Total	177	247	424
Berhe et.al. 2013 ⁴³	Tigray, Mekelle town	Cross-sectional study	mothers of children aged 0 to 24 months	361/361	Addis Ababa University	Uneducated	25	24	49
						Primary	27	13	40
						Secondary and above	58	44	102
						Total	110	81	191
Tamiru et.al 2015 ⁴⁴	SNNPR, Arba Minch Zuria Woreda	cross-sectional study	mothers of infants aged two years and younger	384/384	Arba Minch University	Uneducated	196	118	314
						Primary	41	9	50
						Secondary and above	18	2	20
						Total	255	129	384
Arage et.al. 2016 ⁴⁵	Amhara, Debre Tabor Town	Cross-sectional study	Mothers of Infants Less Than Six Months of Age	470/453	Debre Tabor University	Uneducated	16	27	43
						Primary	299	81	380
						Secondary and above	19	11	30
						Total	334	119	453
Adugna et.al. 2017 ⁴⁶	SNNPR, Hawassa city	Cross-sectional study	Mothers with infants aged 0–6 months	541/529	USAID and Save the Children	Uneducated	31	20	51
						Primary	124	63	187
						Secondary and above	167	124	291
						Total	322	207	529
Getahun et al 2017 ⁴⁷	SNNPR, Kemba Woreda	Cross-sectional study	Mothers who have children from 6 months to 2 years of age	567/562	Not mentioned	Uneducated	47	126	173
						Primary	81	121	202
						Secondary and above	100	87	187
						Total	228	334	562
Alemayehu et al 2009 ⁴⁸	Tigray, Axum town	Cross-sectional study	mothers who had children aged 6-12	1,142/1,142	Not mentioned	Uneducated	449	442	891
						Primary	98	107	205

						Secondary and above	11	35	46
						Total	558	584	1142
Asfaw et al 2015 ⁴⁹	Amhara, Debre Berhan District	Cross-sectional study	Mothers with their index infant aged under 12 months	634/ 634	Debre Berhan University	Uneducated	270	73	343
						Primary	68	37	105
						Secondary and above	97	89	186
						Total	435	199	634
Hunegnaw et.al. 2017 ⁵⁰	Amhara, Gozamin district	Cross-sectional study	Mothers who had Infants aged between 6 and 12 months	506/478	No funding	Uneducated	62	29	91
						Primary	70	19	89
						Secondary and above	226	72	298
						Total	358	120	478
Seid et.al 2013 ⁵¹	Amhara, Bahir Dar city	Cross-sectional study	Mothers who Delivered in the last 12 months	819/819	University of Gondar	Uneducated	120	141	261
						Primary	97	64	161
						Secondary and above	195	202	397
						Total	412	407	819
Tadesse et.al. 2016 ⁵²	SNNPR, Sorro District	Cross-sectional study	Mothers With infants aged of 0–5 months	602/ 579	NORAD	Uneducated	184	190	374
						Primary	69	45	114
						Secondary and above	17	9	26
						Total	270	244	514
Tariku et.al. 2017 ⁵³	Amhara, Dabat District	Cross-sectional study *	Mothers with children aged less than 59 months	5,227/ 5,227	University of Gondar	Uneducated	1609	1704	3313
						Primary	407	316	723
						Secondary and above	835	356	1191
						Total	2851	2376	5227
Tsegaye et al 2019 ⁵⁴	Afar, Aysaita woreda	Cross-sectional study	Mothers with infants under the age of 6 months	631/618	Addis Ababa University	Uneducated	183	192	375
						Primary	106	64	170
						Secondary and above	51	22	73
						Total	340	278	618
Azeze et al 2019 ⁵⁵	SNNPR, Boditi Town	Cross-sectional study	Mothers having children age between 6 and 12 months	412/ 403	Wolaita Sodo University	Uneducated	63	47	110
						Primary	89	39	128
						Secondary and above	109	56	165
						Total	261	142	403
Tamir 2010 ⁵⁶				825/794		Uneducated	92	22	114

	Amhara, Bahir Dar city	Cross-sectional study	Mothers having children 0-23 months of age		Addis Ababa University	Primary	126	55	181
						Secondary and above	220	310	530
						Total	438	387	825
Hailu 2015 ⁵⁷	Addis Ababa city	Cross-sectional study	Mothers with infants under the age of 6 months	383/383	Not mentioned	Uneducated	38	9	47
						Primary	53	29	82
						Secondary and above	193	60	253
						Total	284	98	382
Worku 2015 ⁵⁸	Amhara, Woldiya	Cross-sectional study	Mothers who have infants aged 0-6 month	876/ 852	Addis Ababa University	Uneducated	88	26	114
						Primary	114	72	186
						Secondary and above	275	277	552
						Total	477	375	852
b. Paternal educational status									
Tamiru et.al 2015 ⁴⁴	SNNPR, Arba Minch Zuria Woreda	Cross-sectional study	mothers of infants aged two years and younger	384/384	Arba Minch University	Uneducated	160	98	258
						Primary	79	26	105
						Secondary and above	16	5	21
						Total	255	129	384
Asfaw et al 2015 ⁴⁹	Amhara, Debre Berhan District	Cross-sectional study	Mothers with their index infant aged under 12 months	634/ 634	Debre Berhan University	Uneducated	198	65	263
						Primary	76	30	106
						Secondary and above	191	104	295
						Total	465	199	664
Hunegnaw et.al. 2017 ⁵⁰	Amhara, Gozamin district	Cross-sectional study	Mothers who had Infants aged between 6 and 12 months	506/478	No funding	Uneducated	59	29	88
						Primary	56	14	70
						Secondary and above	243	77	320
						Total	358	120	478
Seid et.al 2013 ⁵¹	Amhara, Bahir Dar city	Cross-sectional study	Mothers who Delivered in the last 12 months	819/819	University of Gondar	Uneducated	99	78	177
						Primary	76	73	149
						Secondary and above	258	235	493
						Total	433	386	819
Hailu 2015 ⁵⁷	Addis Ababa city	Cross-sectional study	Mothers with infants under the age of 6 months	383/383	Not mentioned	Uneducated	8	4	12
						Primary	32	10	42
						Secondary and above	219	69	288

						Total	259	83	342
c. Socioeconomic status									
Shiferaw et al 2015 ⁵⁹	Addis Ababa	Cross-sectional study	Mothers with newborn ≤ nine months	660/648	Addis Continental Institute of Public Health	Low	130	319	449
						Medium	29	58	87
						High	12	58	70
						Total	171	435	606
Regassa 2014 ⁶⁰	SNNPR, Sidama zone	Cross-sectional study	with infants aged between 0 and 6 months old	1100/ 1094	Norwegian Government (HU-NORAD)	Low	149	29	178
						Medium	44	6	50
						High	5	1	6
						Total	198	36	234
Chekol et al. 2017 ⁶¹	Amhara, Gondar town	Cross-sectional study	Mothers with children age 7–12 months	333/333	No funding	Low	13	71	84
						Medium	24	85	109
						High	29	94	123
						Total	66	250	316
Berhe et.al. 2013 ⁴³	Tigray, Mekelle town	Cross-sectional study	mothers of children aged 0 to 24 months	361/361	Addis Ababa University	Low	16	9	25
						Medium	39	22	61
						High	51	36	87
						Total	106	67	173
Abera 2012 ⁶²	Harari, Harar town	Cross-sectional study	Mothers of children aged less than two years	604/583	Not mentioned	Low	128	96	224
						Medium	42	31	73
						High	48	85	133
						Total	218	212	430
Arage et.al. 2016 ⁴⁵	Amhara, Debre Tabor Town	Cross-sectional study	Mothers of Infants Less Than Six Months of Age	470/453	Debre Tabor University	Low	27	20	47
						Medium	178	40	218
						High	117	71	188
						Total	322	131	453
Alemayehu et al 2009 ⁴⁸	Tigray, Axum town	Cross-sectional study	mothers who had children aged 6-12 months	418/418	Not mentioned	Low	202	254	456
						Medium	154	102	256
						High	204	227	431
						Total	560	583	1143
Asfaw et al 2015 ⁴⁹	Amhara, Debre Berhan District	Cross-sectional study	Mothers with their index infant aged under 12 months	634/ 634	Debre Berhan University	Low	160	57	217
						Medium	123	52	175
						High	152	90	242
						Total	435	199	634

Hunegnaw et.al. 2017 ⁵⁰	Amhara, Gozamin district	Cross-sectional study	Mothers who had Infants aged between 6 and 12 months	506/478	No funding	Low	113	50	163
						Medium	83	20	103
						High	162	50	212
						Total	358	120	478
Seid et.al 2013 ⁵¹	Amhara, Bahir Dar city	Cross-sectional study	Mothers who Delivered in the last 12 months	819/819	University of Gondar	Low	210	211	421
						Medium	109	91	200
						High	93	105	198
						Total	412	407	819
Tariku et.al. 2017 ⁵³	Amhara, Dabat District	Cross-sectional study	Mothers with children aged less than 59 months	5,227/ 5,227	University of Gondar	Low	793	796	1589
						Medium	1285	1022	2307
						High	678	498	1176
						Total	2756	2316	5072
Tewabe et.al. 2017 ⁶³	Amhara, Motta town, East Gojjam zone	Cross-sectional Study	Mothers with an infant less than six months old	423/405	No funding	Low	114	84	198
						Medium	55	52	107
						High	34	66	100
						Total	203	202	405
Teka et al. 2015 ⁶⁴	Tigray, Enderta Woreda	Cross-sectional study	Mothers having children aged less than 24 months	541/530	Mekelle University	Low	262	115	377
						Medium	85	38	123
						High	25	5	30
						Total	372	158	530
d. Marital status									
Abera 2012 ⁶²	Harari, Harar town	Cross-sectional study	Mothers of children aged less than two years	604/583	Not mentioned	Married	196	179	375
						Other	11	13	24
						Total	207	192	399
Adugna et.al. 2017 ⁴⁶	SNNPR, Hawassa city	Cross-sectional study	Mothers with infants aged 0–6 months	541/529	USAID and Save the Children	Married	298	177	475
						Other	24	30	54
						Total	322	207	529
Egeta et al 2013 ⁶⁵	Oromia, Kersa district	Cross-sectional study	Mothers of children under two years of age	881/ 860	Haramaya University	Married	603	230	833
						Other	14	13	27
						Total	617	243	860
Alemayehu et al 2009 ⁴⁸	Tigray, Axum town	Cross-sectional study	mothers who had children aged 6-12 months	418/418	Not mentioned	Married	258	835	1093
						Other	31	17	48
						Total	289	852	1141
Hunegnaw et.al. 2017 ⁵⁰	Amhara, Gozamin district	Cross-sectional study		506/478	No funding	Married	317	104	421
						Other	41	16	57

			Mothers who had Infants aged between 6 and 12 months			Total	358	120	478
Sonko et al 2015 ⁶⁶	SNNPR, Halaby special woreda	Cross-sectional study	Mothers of children aged less than six months	422/420	Not mentioned	Married	294	120	414
						Other	2	4	6
						Total	296	124	420
Tadesse et.al. 2016 ⁵²	SNNPR, Sorro District	Cross-sectional Study	Mothers With infants aged of 0–5 months	602/ 579	NORAD	Married	262	223	485
						Other	8	21	29
						Total	270	244	514
Tariku et.al. 2017 ⁵³	Amhara, Dabat District	Cross-sectional study	Mothers with children aged less than 59 months	5,227/ 5,227	University of Gondar	Married	2428	2053	4481
						Other	423	323	746
						Total	2851	2376	5227
Tewabe et.al. 2017 ⁶³	Amhara, Motta town, East Gojjam zone	Cross-sectional Study	Mothers with an infant less than six months old	423/405	No funding	Married	182	165	347
						Other	21	37	58
						Total	203	202	405
Biks et al 2015 ⁶⁷	Amhara, Dabat district	Nested case–control study *	All pregnant women in the second/third trimester	1,769/1,769	WHO and University of Gondar	Married	501	1146	1647
						Other	42	80	122
						Total	543	1226	1769
Tsegaye et al 2019 ⁵⁴	Afar, Aysaita woreda	Cross-sectional Study	Mothers with infants under the age of 6 months	631 /618	Addis Ababa University	Married	318	270	588
						Other	22	8	30
						Total	340	278	618
Chekol et al. 2017 ⁶¹	Amhara, Gondar town	Cross-sectional study	Mothers with children age 7–12 months	333/333	No funding	Married	215	366	581
						Other	11	57	68
						Total	226	423	649
Teka et al. 2015 ⁶⁴	Tigray, Enderta Woreda	Cross-sectional study	Mothers having children aged less than 24 months	541/530	Mekelle University	Married	333	132	465
						Other	39	26	65
						Total	372	158	530
Tamir 2010 ⁵⁶	Amhara, Bahir Dar city	Cross-sectional study	Mothers having children 0-23 months of age	825/794	Addis Ababa University	Married	364	336	700
						Other	74	51	125
						Total	438	387	825
Hailu 2015 ⁵⁷	Addis Ababa city	Cross-sectional study	Mothers with infants under the age of 6 months	383/383	Not mentioned	Married	255	82	337
						Other	29	16	45
						Total	284	98	382
Worku 2015 ⁵⁸						Married	417	324	741

	Amhara, Woldiya	Cross-sectional study	Mothers who have infants aged 0-6 month	876/ 852	Addis Ababa University	Other Total	60 477	53 377	113 854
e. Media exposure									
Getahun et al 2017 ⁴⁷	SNNPR, Kemba Woreda	Cross-sectional study	Mothers who have children from 6 months to 2 years of age	567/562	Not mentioned	Yes No Total	144 84 228	158 176 334	302 260 562
Alemayehu et al 2009 ⁴⁸	Tigray, Axum town	Cross-sectional study	mothers who had children aged 6-12 months	418/418	Not mentioned	Yes No Total	192 365 557	243 338 581	435 703 1138
Taddele et.al. 2014 ⁶⁸	Amhara, Injibara Town	Comparative cross-sectional study	Employed and unemployed mothers of children age ≤ 1 year	524/473	Not mentioned	Yes No Total	109 58 167	45 44 89	154 102 256
Tamiru et.al 2012 ⁶⁹	Oromia, Jimma Arjo Woreda	Cross-sectional study	Mothers of index children aged	384/ 382	Not mentioned	Yes No Total	77 106 183	104 95 199	181 201 382
Tamiru et.al 2015 ⁴⁴	SNNPR, Arba Minch Zuria Woreda	Cross-sectional study	mothers of infants aged two years and younger	384/384	Arba Minch University	Yes No Total	147 108 255	38 91 129	185 199 384
Berhe et.al 2013 ⁴³	Tigray, Mekelle town	Cross-sectional study	mothers of children aged 0 to 24 months	361/361	Addis Ababa University	Yes No Total	64 46 110	42 29 71	106 75 181
Worku 2015 ⁵⁸	Amhara, Woldiya	Cross-sectional study	Mothers who have infants aged 0-6 month	876/ 852	Addis Ababa University	Yes No Total	350 127 477	278 97 375	628 224 852
f. Parity									
Dachew et al 2014 ⁷⁰	Amhara, North Gondar Zone	Cross-sectional study	Nurses and midwives	196 /178	University of Gondar	Primiparous Multiparous Total	19 55 74	55 59 114	74 114 188
Gultie et.al 2016 ⁷¹	Amhara, Debre Berhan town	Cross-sectional study	mothers having children aged less than 23 months old	548/548	Not mentioned	Primiparous Multiparous Total	89 184 273	103 172 275	192 356 548
Tsegaye et al 2019 ⁵⁴	Afar, Aysaita woreda	Cross-sectional study	Mothers with infants under the age of 6 months	631/618	Addis Ababa University	Primiparous Multiparous Total	81 259 340	52 226 278	133 485 618

Sefene et al. 2013 ⁷²	Amhara, Bahir Dar city	Cross-sectional study	Mothers who had a child age less than 6 months	170/159	Not mentioned	Primiparous	34	42	76
						Multiparous	44	39	83
						Total	78	81	159
Azeze et al 2019 ⁵⁵	SNNPR, Boditi Town	Cross-sectional study	Mothers having children age between 6 and 12 months	412/ 403	Wolaita Sodo University	Primiparous	163	73	236
						Multiparous	98	69	167
						Total	261	142	403
Hailu 2015 ⁵⁷	Addis Ababa city	Cross-sectional study	Mothers with infants under the age of 6 months	383/383	Not mentioned	Primiparous	147	59	206
						Multiparous	137	39	176
						Total	284	98	382
Worku 2015 ⁵⁸	Amhara, Woldiya	Cross-sectional study	Mothers who have infants aged 0-6 month	876/ 852	Addis Ababa University	Primiparous	208	130	338
						Multiparous	269	245	514
						Total	477	375	852

**= Used nationally representative Ethiopian Demographic Health Survey (EDHS) data*

Predicting factors

Maternal educational status

Seventeen studies⁴²⁻⁵⁸ involving 14,691 mothers reported the association between maternal educational status and EBF (Table 1a). Seven studies were conducted in Amhara region, five in SNNPR, and four studies in Addis Ababa, Afar, and Tigray. One study used nationally representative data. The odds of EBF in mothers who attained primary education was 39% significantly higher than uneducated mothers (OR = 1.39; $p = 0.03$; 95% CI = 1.03 - 1.89; $I^2 = 86.11\%$) (Figure 1). This estimate was obtained after removing one outlier study.⁵⁸ The meta-regression analysis result showed that region, sample size and publication year explain 24.54% of the between-study heterogeneity. These factors had also a moderation effect. The odds EBF among mothers with secondary education and above was 9% higher than uneducated mothers (OR = 1.09; $p = 0.71$; 95% CI = 0.69 - 1.72; $I^2 = 93.96\%$) (Supplementary Figure S3). The meta-regression analysis result showed that region, sample size and publication year explain 10.82% of the between-study heterogeneity, however, moderation effect was not observed (QM= 9.03, $df = 7$, $p = 0.25$). The odds of EBF in mothers with secondary education and above was 15% lower than mothers who attained primary education (OR = 0.85; $p = 0.25$; 95% CI = 0.64 - 1.12, $I^2 = 83.71\%$) (Supplementary Figure S6). Based on the meta-regression analysis result, 67.13% of the between-study heterogeneity accounted for the difference in region, study area, sample size and publication year. Region had moderation effect (QM= 26.47, $df = 9$, $p = 0.002$). In all three comparisons, there was no significant publication bias (Supplementary Figure S1, Supplementary Figure S4, Supplementary Figure S7) and the evidence on the effect of maternal educational status on EBF was mixed with steady (Supplementary Figure S2) and dramatic increment (Supplementary Figure S5 and Supplementary Figure S8) over time. Even though the association was not statistically significant at all levels, there was a clear pattern of a dose-response relationship between maternal educational status and EBF whereby the practice of EBF decreased when the educational status is increased.

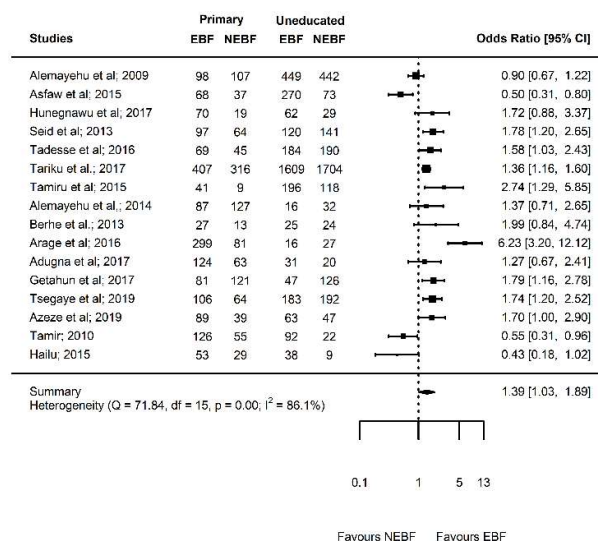


Figure 1: Forest plot showing the results of 17 studies examining the association between maternal educational status (primary education versus uneducated) and exclusive breastfeeding.

Paternal educational status

Five studies^{44,49-51,57} with 2,698 mothers reported the association between paternal educational status and EBF (Table 1b). Three studies were conducted in Amhara region, and the other two studies conducted in Addis Ababa and SNNPR. Mothers who had spouse with primary education had 23% higher chance of EBF than mothers who had had uneducated spouse (OR = 1.23; p = 0.35; 95% CI = 0.80 - 1.90, I² = 59.35%) (Figure 2). Likewise, mothers who had spouse with secondary education and above had 5% higher chance of EBF than mothers who had had uneducated spouse (OR = 1.05; p = 0.83; 95% CI = 0.67 - 1.66; I² = 69.28%) (Supplementary Figure S11). Moreover, mothers who had spouse with secondary education and above had 9% higher chance of EBF than mothers who had had spouse with primary education (OR = 0.91; p = 0.46; 95% CI = 0.71 - 1.17, I² = 0.00%) (Supplementary Figure S14). In all comparisons, there was no significant publication bias (Supplementary Figure S9, Supplementary Figure S12, Supplementary Figure S15). The evidence on the effect of paternal educational status on EBF was mixed with slight increment (Supplementary Figure S10 and Supplementary Figure S13) and decrement (Supplementary Figure S16) over time. Similar to maternal educational status, an inverse dose-response relationship was

detected between paternal educational status and EBF although the association was not statistically significant at all levels.

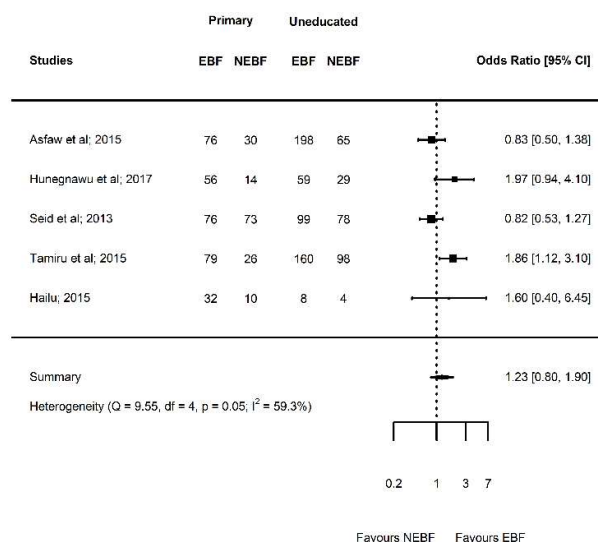


Figure 2: Forest plot showing the results of five studies examining the association between paternal educational status (primary versus uneducated) and exclusive breastfeeding.

Household income

Thirteen studies^{43,45,48-51,53,59-64} with 11,966 mothers reported the association between socioeconomic status and EBF (Table 1c). Seven studies were conducted in Amhara region, two studies in Tigray region, and the other three studies conducted in Addis Ababa, Harari, and SNNPR. One study used nationally representative data. The odds of EBF among mothers who had medium socioeconomic status was 27% significantly higher than mothers who had low socioeconomic status (OR = 1.27; p = 0.02; 95% CI = 1.05 - 1.55; I² = 60.9%) (Figure 3). The odds of EBF among mothers who had high socioeconomic status was 11% lower than mothers who had low socioeconomic status although not statistically significant (OR = 0.89; p = 0.47; 95% CI = 0.66 - 1.21; I² = 83.11%) (Supplementary Figure S19). Based on the meta-regression analysis, 29.41% of the heterogeneity accounted for the variation in region, study area, study area and publication year, however, none of these factors had moderation effect (QM = 11.55, df = 9, p = 0.24). Moreover, the odds of EBF among mothers who had high socioeconomic status was 31% significantly lower than mothers who had medium socioeconomic status (OR = 0.69; p = 0.002; 95% CI = 0.54 - 0.87; I² = 68.82%) (Supplementary Figure S22). There was no significant publication bias in all comparisons

(Supplementary Figure S17, Supplementary Figure S20, Supplementary Figure S23). The evidence on the effect of socioeconomic status on EBF was not substantially changed over time (Supplementary Figure S18, Supplementary Figure S21, Supplementary Figure S24).

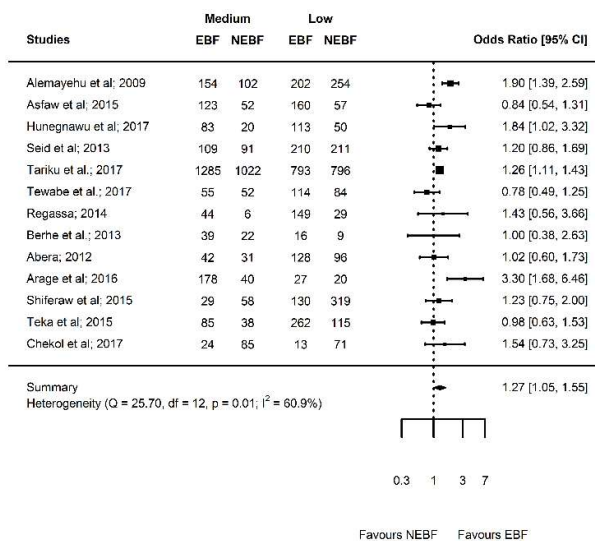


Figure 3: Forest plot showing the results of 13 studies examining the association between household income (medium versus low) and exclusive breastfeeding.

Marital status

Sixteen studies^{46,48,50,52-54,56-58,61-67} including 15,689 mothers reported the association between marital status and EBF (Table 1d). Seven studies conducted in Amhara region, three studies in SNNPR and the five studies conducted in Addis Ababa, Afar, Harari, Oromia, and Tigray. One study used nationally representative data. One outlier study⁴⁸ was excluded after sensitivity analysis. The odds of EBF among married mothers was 39% significantly higher than unmarried mothers (OR = 1.39; p = 0.02; 95% CI = 1.05 - 1.83; I² = 76.96%) (Figure 4). There was no publication bias (Supplementary Figure S25). The evidence on the effect of marital status on EBF was slightly increased over time (Supplementary Figure S26).

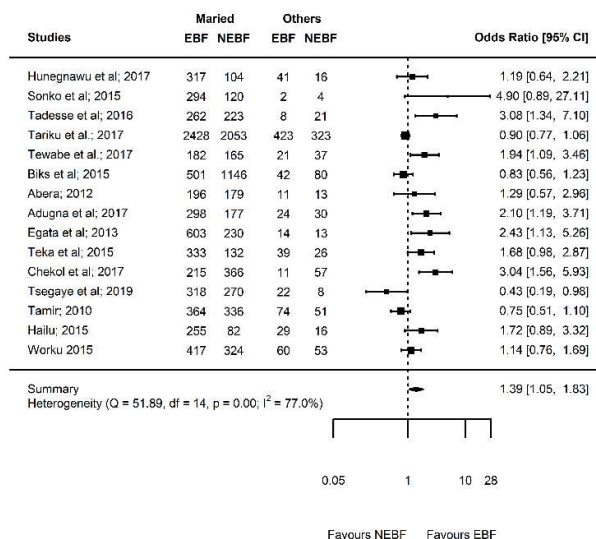


Figure 4: Forest plot showing the results of 16 studies examining the association between marital status (married versus others) and exclusive breastfeeding.

Media exposure

Seven studies^{43,44,47,48,58,68,69} in 4,231 mother reported the association between media exposure and EBF (Table 1e). Two studies conducted in Amhara region, two studies in SNNPR, and two other studies conducted in Oromia and Tigray region. One study used nationally representative data. The odds of EBF among mothers who had no media exposure was 25% higher than mothers who had no media exposure although the association was not statistically significant (OR = 1.25; p = 0.32; 95% CI = 0.81 - 1.94; I² = 89.32%) (Figure 5). There was no significant publication bias (Supplementary Figure S27). The evidence on the effect of media exposure on EBF was steadily increased over time (Supplementary Figure S28). The meta-regression analysis result showed that 100% of the between-study heterogeneity accounted for the variation in region and publication year, and these factors had significant moderation effect (QM= 53.58, df = 5, p ≤ 0.01).

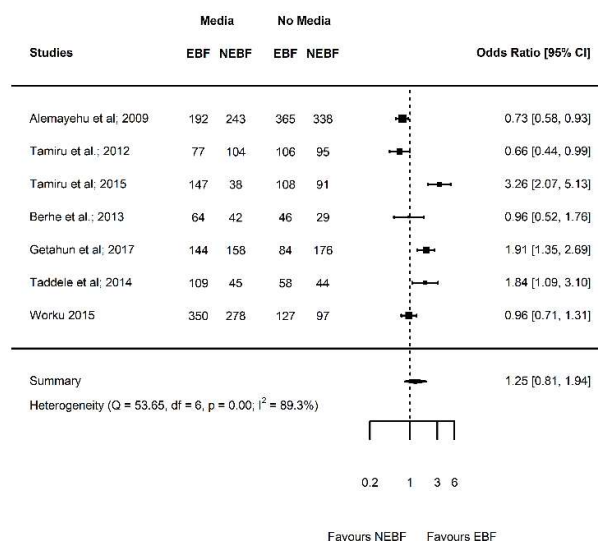


Figure 5: Forest plot showing the results of seven studies examining the association between media exposure (yes versus no) and exclusive breastfeeding.

Parity

Seven studies^{54,55,57,58,70-72} in 3,165 mothers reported the association between parity and EBF (Table 1f). Four studies conducted in Amhara region, and the other three studies conducted in Addis Ababa, Afar, and SNNPR region. The odds of EBF in multiparous mothers 6% higher than primiparous mothers although not statistically significant (OR = 1.06; p = 0.74; 95% CI = 0.74 - 1.53; I² = 80.68%) (Figure 6). There was a significant publication bias (Supplementary Figure S29). The evidence on the effect of media exposure on EBF was decreased over time (Supplementary Figure S30). The meta-regression analysis showed that 56.11% of the between-study heterogeneity accounted for the variation in the study area and publication year. Publication year had also moderation effect (QM= 6.94, df = 2, p = 0.03).

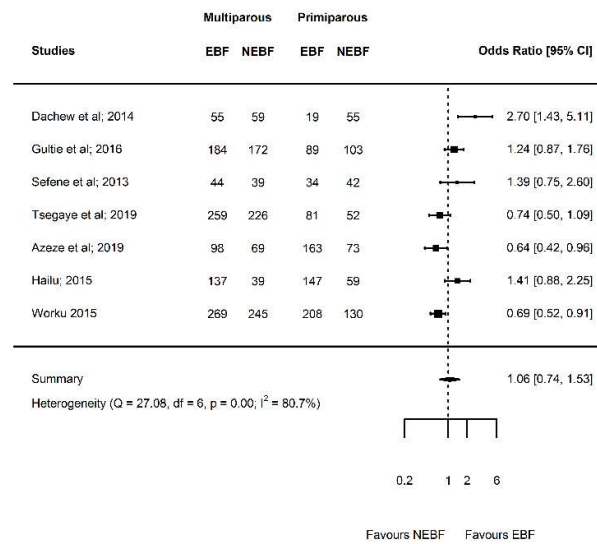


Figure 5: Forest plot showing the results of seven studies examining the association between parity (multiparous versus primiparous) and exclusive breastfeeding.

Discussion

This meta-analysis investigated several factors that predicting EBF practice in Ethiopian mothers. The key findings were EBF significantly associated with maternal educational status, marital status and household income but not with parity, media exposure and paternal educational status. We further unraveled the dose-response relationship of educational status and household income and EBF although the association was not persistently significant at all levels.

Congruent with previous meta-analyses studies^{73,74}, our meta-analysis showed that maternal primary education was beneficial for maintaining EBF until six months. This might be because mothers are more likely to be aware of the health benefits of breastfeeding if they are educated. Female literacy is essential to access health-related information, resist harmful traditional beliefs and practices, increase confidence and minimize early initiation of complementary feeding. On the other hand, in this meta-analysis, EBF among mothers having secondary education and above were not found to be significantly different from mothers with primary education as well as uneducated mothers. This finding suggests that the association between maternal education and EBF may not be linear. This implies only certain level of education may have a beneficial effect on EBF practice. This might be due to the fact that secondary and above education leading to better employment of the mother, engagement in intensive and time-consuming works which may buffer the relation between education and EBF. This hypothesis was supported by previous studies that found a negative correlation between maternal employment and EBF.^{25,26,75} Other studies also found mixed results on the association between maternal education and EBF. For example, in a review of studies conducted in Middle East countries, two studies found a significant positive association, other three studies revealed a significant negative association, and 10 studies could not confirm an association in either direction.⁷⁵ In addition, a study based on the pooled Demographic and Health Survey data collected in nine Sub-Saharan Africa countries found that mothers with a secondary level of education or above were more likely to exclusively breastfeed compared with uneducated mothers.²⁶

Another relevant finding was that currently married mothers had high chance of EBF compared with currently unmarried mothers. This might be due to several reasons. First, married mothers could have better incomes and educational levels⁷⁶, as we showed certain level of education and household income advantage increased the likelihood of EBF. Second,

previous study has shown that married mothers are more satisfied, committed to spousal relationships, get shared spousal support and reported less conflict. As a result, married mothers can have high emotional responsibility to keep the health of the newborn and more likely to engage in positive parenting behaviours.⁷⁷⁻⁷⁹ However, a systematic review of studies conducted in Brazil revealed only one out of six studies found a significant association between living with a partner and EBF.⁸⁰

This meta-analysis also showed that mothers with a medium household income had higher chance of EBF than mothers with low household income. However, mothers with a high level of household income had lower chance of EBF than mothers with medium income and are not significantly different from mothers with low household income. Our result was in line with a study in five East and Southeast Asian Countries that showed a significant association between high household wealth index and low EBF practice.⁷³ Even though a certain level of income is beneficial for EBF, it may decrease when the socioeconomic status is increased. This may be due to that mothers with high household income afford to and engage in formula milk, which lead to early initiation of complementary feeding. A previous meta-analysis depicted that low family income significantly contributes to the EBF interruption before six months.⁷⁴ However, a large-scale study in nine Sub-Saharan Africa countries found no association between household wealth index and EBF.²⁶

Furthermore, in this meta-analysis, parity, paternal education and media exposure were not found to be associated with EBF. This might be due to small number of studies included in the meta-analysis. Studies found a mixed finding regarding the association between parity and EBF. A meta-analysis of 22 epidemiological studies⁷⁴ conducted in Brazil, and East and Southeast Asian Countries⁷³ found that primiparity was associated with non-EBF. On the other hand, in a systematic review showed that only 6 out 19 studies found and a significant association EBF and multiparity.

This meta-analysis showed, for the first time, the pooled effect of several relevant predicting factors based on studies conducted in the past 20 years. Even though residual heterogeneity is still evident, we managed this problem by conducting meta-regression analysis and by removing outlier studies using the Jackknife method. In addition, clinical heterogeneity was minimized by including only studies conducted on healthy mothers and newborns. Methodological heterogeneity was also minimized by including studies that reported EBF based on WHO definition, selected study subjects using a random sampling

method, and similar study design and data collection methods. To minimize the possibility of missing relevant studies, we have used a combination of electronic databases search and manual search of cross-references, grey literature, and table of contents of relevant journals. Furthermore, this meta-analysis was conducted based on a published protocol to minimize methodological biases.

This meta-analysis has also limitations, which should be taken in to account during the translation of our results. All the studies included in this meta-analysis were cross-sectional study, which hinders inference on a cause-effect relationship. The risk of measurement error and recall bias should also be acknowledged. Interestingly, almost all included studies were conducted in mothers with a newborn less than 23 months. In relation to this, the maternal recall is found to be a valid and reliable estimate of breast feeding initiation and duration when the data is collected within three years of breast feeding history.⁸⁴ Social desirability bias could also be evident given that self-reported breast feeding experience, educational status and income was used. In addition, the household income classifications are not standardized and did not account for indices such as inflation, which changes over time. Another problem was the confounding effect that can not be excluded given that the reported effect size in this meta-analysis was not adjusted to covariates, such as breast feeding counseling, cultural beliefs, partner support or maternal health status following childbirth. Studies for some variables were lacking in some regions, which may limit generalizability of our findings. Despite this fact, at least one study used nationally representative data per each variable. Similarly, only four studies investigated the association between paternal educational status and EBF, which may limits the statistical power of our meta-analysis. This meta-analysis covers studies conducted only in Ethiopia; therefore, the results may not be extrapolated to other LMCs and developed countries. Moreover, statistical heterogeneity was observed in some of the analysis. The dose-response relationship of multiparity and EBF was not investigated due to the huge difference between included studies in the categorization of multiparity. A further limitation of this study was maternal and paternal education represents the formal education gained through schooling and it may not reflect the health literacy of the mothers and fathers. Finally, the results cannot be generalized to mothers and newborns with HIV/AIDS or other medical illness.

Perspectives

Measuring breast feeding is challenging, and the use of standardized questions may be interpreted differently according to sociocultural contexts and differing probing techniques by interviewers.⁸⁵ In developing countries, breast feeding coverage is relatively good but we noted studies focused only on factors affecting breast feeding. To bridge this gap, future studies in Ethiopia should focus on investigating the effect of breast feeding on maternal and newborn health outcomes, such as cardiometabolic diseases, neuropsychological diseases, and psychiatric disorders. All included studies in the current review performed the traditional bivariate and multiple logistic regression. As a result, studies on associated factors should deeply consider the interconnection between predictors and apply detailed statistical analysis methods, such as mediation and moderation analysis. Moreover, future research should examine the possible causations between predicting factors and EBF practices in Ethiopia by implementing longitudinal research designs and large cohort-based studies, which can therefore, produce more accurate and insightful results. For example, one longitudinal study²⁴ indicated the absence of significant association of several factors that consistently reported in cross-sectional studies. Overall, we observed a substantial inconsistency regarding predicting factors across nations; therefore, context-specific meta-analysis is further required to strengthen inferences. Given the scarcity of national, regional, or international meta-analysis that report the pooled effect of various relevant factors affecting EBF, future researchers in low- and middle-income countries should focus on meta-analysis instead of narrative review.

Conclusions and recommendations

In this meta-analysis, we depicted the relevant effect of maternal education, income, and marital status on EBF. Therefore, multifaceted, effective, and evidence-based efforts are needed to increase national breastfeeding rates in Ethiopia. Health professionals should give special emphasis on uneducated or highly educated mothers with alternative supportive and educational interventions, such as prenatal education, counseling, and peer education.⁸¹ School education is also required for young girls to increase breast feeding awareness and to prepare for motherhood.⁸¹ Maternal education plays an important role in infant feeding behavioral change and to maintain the mother and newborn health. Even

though there have been huge improvements in women education in Ethiopia, it has long been neglected and remains much lower than men. A systematic review of interventions designed to promote EBF in high-income countries found that the interventions using educational approaches were significantly associated with the increase in the duration of EBF.^{89,90} Another systematic review and meta-analysis showed that greatest improvements in early initiation of breastfeeding, exclusive breastfeeding and continued breastfeeding rates were seen when counseling or education was provided concurrently in home and community, health systems and community, health systems and home settings, respectively.⁹² Improving the economic power of women would also increase EBF practice to certain level. Health professionals should also give attention to unmarried mothers before, during and after birth. Workplace support for breastfeeding, minimizing cesarean section delivery, strengthening health-worker knowledge and skills at health facilities and Baby-Friendly Hospital Initiative, and strengthening the family- and community-level interventions are also relevant interventions.²⁵ The training of health community agents and structural changes in health services might be relevant to increase EBF practice.⁸³ Furthermore, improving the current maternity leave policy in Ethiopia that guarantees a pregnant female worker a paid maternity-leave of only three months of paid leave after delivery would be helpful to increase the rate of EBF. A woman's ability to breastfeed is markedly reduced when she returns to work if breastfeeding breaks are not available, if quality infant care near her workplace is inaccessible or unaffordable, and if no facilities are available for pumping or storing milk.⁸⁷ A study that explored the national policies of 182 Member States of the United Nations showed that the guarantee of paid breastfeeding breaks for at least 6 months was associated with an increase of 8.86 percentage points in the rate of EBF.⁸⁸ Finally, access to breastfeeding support such as trained pediatricians, midwives, International Board-Certified Lactation Consultants, and peer counselors is considered important for supporting breastfeeding families, maternity, paternity, and parental leave, funding to support national and regional breastfeeding activities.⁹³

Acknowledgment

Our special gratitude forwarded to Sjoukje van der Werf (University of Groningen, the Netherlands) for her support to develop the search strings.

Data sharing statement

All data generated or analyzed in this study are included in the article and its supplementary files.

Contributors

TD conceived and designed the study. TD and BS developed the search strategy and screened studies. TD and SM extracted and analyzed the data and interpreted the results. TD and SM wrote the manuscript draft. All authors provided intellectual comments and revised the draft manuscript. All the authors read and approved the final manuscript.

Funding

This research received no specific grant from any funding agency in the public, commercial or not-for-profit sectors.

Competing interests

None declared.

References

1. Mullany LC, Katz J, Li YM, et al. Breast-feeding patterns, time to initiation, and mortality risk among newborns in southern nepal. *J Nutr*. 2008;138(3):599-603.
2. Baker EJ, Sanei LC, Franklin N. Early initiation of and exclusive breastfeeding in large-scale community-based programmes in bolivia and madagascar. *Journal of Health, Population and Nutrition*. 2006:530-539.
3. Edmond KM, Zandoh C, Quigley MA, Amenga-Etego S, Owusu-Agyei S, Kirkwood BR. Delayed breastfeeding initiation increases risk of neonatal mortality. *Pediatrics*. 2006;117(3):e380-e386.
4. Reading R. Effect of breastfeeding on infant and child mortality due to infectious diseases in less developed countries: A pooled analysis. *Ambulatory Child Health*. 2000;6(2):133-134.
5. Khan J, Vesel L, Bahl R, Martines JC. Timing of breastfeeding initiation and exclusivity of breastfeeding during the first month of life: Effects on neonatal mortality and morbidity—a systematic review and meta-analysis. *Matern Child Health J*. 2015;19(3):468-479.
6. Black RE, Victora CG, Walker SP, et al. Maternal and child undernutrition and overweight in low-income and middle-income countries. *The lancet*. 2013;382(9890):427-451.
7. Rollins NC, Bhandari N, Hajeebhoy N, et al. Why invest, and what it will take to improve breastfeeding practices? *The Lancet*. 2016;387(10017):491-504.
8. Setegn T, Gerbaba M, Belachew T. Determinants of timely initiation of breastfeeding among mothers in goba woreda, south east ethiopia: A cross sectional study. *BMC Public Health*. 2011;11(1):1.
9. Yngve A, Sjöström M. Breastfeeding in countries of the european union and EFTA: Current and proposed recommendations, rationale, prevalence, duration and trends. *Public Health Nutr*. 2001;4(2b):631-645.
10. United Nations Children's Emergency Fund (UNICEF). Breastfeeding: Nutrition. http://www.unicef.org/nutrition/index_24824.html. Updated 2015. Accessed August/05, 2016.
11. WHO Secretariat. Early initiation of breastfeeding: The key to survival and beyond. . 2010.
12. Alemayehu T, Haidar J, Habte D. Determinants of exclusive breastfeeding practices in ethiopia. *Ethiopian Journal of Health Development*. 2009;23(1).
13. Patel A, Badhoniya N, Dibley M. Breastfeeding and infant feeding practices in india-A review of demographic and health surveys and national family health surveys. *Solution Exchange for MCH Community Newsletter, Breastfeeding Month Special*. 2008.
14. Ekambaram M, Bhat B, Vishnu B, Padiyath Ahamed M. Knowledge, attitude and practice of breastfeeding among postnatal mothers. *Current Pediatric Research*. 2010;14(2):119-124.
15. Victora CG, Bahl R, Barros AJ, et al. Breastfeeding in the 21st century: Epidemiology, mechanisms, and lifelong effect. *The Lancet*. 2016;387(10017):475-490.

16. Gebremedhin S. Core and optional infant and young child feeding indicators in sub-saharan africa: A cross-sectional study. *BMJ open*. 2019;9(2):bmjopen-2018-023238.
17. Macro O. Central statistical agency: Ethiopia demographic and health survey 2005. *ORC Macro, Calverton, Maryland, USA*. 2006.
18. Habtewold T, Mohammed S, Endalamaw A, et al. Breast and complementary feeding in ethiopia: New national evidence from systematic review and meta-analyses of studies in the past 10 years. *Eur J Nutr*. 2018.
19. Koosha A, Hashemifesharaki R, Mousavinasab N. Breast-feeding patterns and factors determining exclusive breast-feeding. *Singapore Med J*. 2008;49(12):1002.
20. Uchendu U, Ikefuna A, Emodi I. Factors associated with exclusive breastfeeding among mothers seen at the university of nigeria teaching hospital. *South African Journal of Child Health*. 2009;3(1).
21. Dhandapany G, Bethou A, Arunagirinathan A, Ananthkrishnan S. Antenatal counseling on breastfeeding—is it adequate? A descriptive study from pondicherry, india. *International Breastfeeding Journal*. 2008;3(1):1.
22. Dearden K, Altaye M, Maza Id, et al. Determinants of optimal breast-feeding in peri-urban guatemala city, guatemala. *Revista Panamericana de Salud Pública*. 2002;12(3):185-192.
23. Hector D, King L, Webb K, Heywood P. Factors affecting breastfeeding practices. applying a conceptual framework. *New South Wales public health bulletin*. 2005;16(4):52-55.
24. Chudasama RK, Amin CD, Parikh YN. Prevalence of exclusive breastfeeding and its determinants in first 6 months of life: A prospective study. *Online Journal of Health and Allied Sciences*. 2009;8(1).
25. Kavle JA, LaCroix E, Dau H, Engmann C. Addressing barriers to exclusive breast-feeding in low-and middle-income countries: A systematic review and programmatic implications. *Public Health Nutr*. 2017;20(17):3120-3134.
26. Ogbo FA, Eastwood J, Page A, et al. The impact of sociodemographic and health-service factors on breast-feeding in sub-saharan african countries with high diarrhoea mortality. *Public Health Nutr*. 2017;20(17):3109-3119.
27. Habtewold TD, Sharew NT, Alemu SM. Effect of gender of new-born, antenatal care and postnatal care on breastfeeding practices in ethiopia: Evidence from systematic review and meta-analysis of national studies. *bioRxiv*. 2018:405605.
28. Alemu SM, Alemu YM, Habtewold TD. Association of age and colostrum discarding with breast-feeding practice in ethiopia: Systematic review and meta-analyses. *Public Health Nutr*. 2019:1-20.
29. Gomez-Pomar E, Blubaugh R. The baby friendly hospital initiative and the ten steps for successful breastfeeding. a critical review of the literature. *Journal of Perinatology*. 2018:1.
30. Federal Democratic Republic of Ethiopia Ministry of Health. HSTP health sector transformation plan 2015/16-2019/20 (2008-2012 EFY). . 2015.

31. Assefa T, Samuel A, Argaw A, et al. Assessment of status of infant and young child feeding (IYCF) practice, policy and programs: Achievements and gaps, in ethiopia. *European Journal of Nutrition & Food Safety*. 2015;1085-1086.
32. Federal Democratic Republic of Ethiopia. National nutrition program 2016-2020 . . 2016.
33. Habtewold TD, Islam MA, Sharew NT, Mohammed SH, Birhanu MM, Tegegne BS. SystEmatic review and meta-aNalysis of infanT and young child feeding practices (ENAT-P) in ethiopia: Protocol. *BMJ Open*. 2017;7(8):e017437-2017-017437.
34. Munn Z, Tufanaru C, Aromataris E. JBI's systematic reviews: Data extraction and synthesis. *Am J Nurs*. 2014;114(7):49-54.
35. World Health Organization. Indicators for assessing infant and young child feeding practices: Part 1: Definitions: Conclusions of a consensus meeting held 6-8 november 2007 in washington DC, USA. . 2008.
36. Moher D, Liberati A, Tetzlaff J, Altman DG, Prisma Group. Preferred reporting items for systematic reviews and meta-analyses: The PRISMA statement. *PLoS med*. 2009;6(7):e1000097.
37. Peterson J, Welch V, Losos M, Tugwell P. *The Newcastle-Ottawa scale (NOS) for assessing the quality of nonrandomised studies in meta-analyses*. 2011.
38. Egger M, Davey Smith G, Schneider M, Minder C. Bias in meta-analysis detected by a simple, graphical test. *BMJ*. 1997;315(7109):629-634.
39. Higgins J, Thompson SG. Quantifying heterogeneity in a meta-analysis. *Stat Med*. 2002;21(11):1539-1558.
40. Viechtbauer W. Conducting meta-analyses in R with the metafor package. *Journal of statistical software*. 2010;36(3).
41. Tsumoto S, Hirano S. Formal analysis of leave-one-out methods based on decremental sampling scheme. . 2014;2:371-378.
42. Alemayehu M, Abreha K, Yebyo H, Zemichael K, Gebremichael H. Factors associated with timely initiation and exclusive breast feeding among mothers of axum town, northern ethiopia. *Sci J Public Health*. 2014;2(5):394-401.
43. Berhe H, Mekonnen B, Bayray A, Berhe H. Determinants of breast feeding practices among mothers attending public health facilities, mekelle, northern ethiopia; A cross sectional study. *International Journal of Pharmaceutical Sciences and Research*. 2013;4(2):650.
44. Tamiru D, Tamrat M. Constraints to the optimal breastfeeding practices of breastfeeding mothers in the rural communities of arba minch zuria woreda, ethiopia: A community-based, cross-sectional study. *S Afr J Clin Nutr*. 2015;28(3):134-139.
45. Arage G, Gedamu H. Exclusive breastfeeding practice and its associated factors among mothers of infants less than six months of age in debre tabor town, northwest ethiopia: A cross-sectional study. *Advances in Public Health*. 2016;2016.

46. Adugna B, Tadele H, Reta F, Berhan Y. Determinants of exclusive breastfeeding in infants less than six months of age in hawassa, an urban setting, ethiopia. *International Breastfeeding Journal*. 2017;12(1):45.
47. Getahun EA, Hayelom DH, Kassie GG. Exclusive breast feeding practice and associated factors in kemba woreda, southern ethiopia, a community based cross-sectional study. *International Journal of Science, Technology and Society*. 2017;5(4):55.
48. Alemayehu T, Haidar J, Habte D. Determinants of exclusive breastfeeding practices in ethiopia. *Ethiopian Journal of Health Development*. 2009;23(1):12-18.
49. Asfaw MM, Argaw MD, Kefene ZK. Factors associated with exclusive breastfeeding practices in debre berhan district, central ethiopia: A cross sectional community based study. *International Breastfeeding Journal*. 2015;10:23.
50. Hunegnaw MT, Gezie LD, Teferra AS. Exclusive breastfeeding and associated factors among mothers in gozamin district, northwest ethiopia: A community based cross-sectional study. *Int Breastfeeding J*. 2017;12(1).
51. Seid AM, Yesuf ME, Koye DN. Prevalence of exclusive breastfeeding practices and associated factors among mothers in bahir dar city, northwest ethiopia: A community based cross-sectional study. *Int Breastfeed J*. 2013;8(1):14-4358-8-14.
52. Tadesse T, Mesfin F, Chane T. Prevalence and associated factors of non-exclusive breastfeeding of infants during the first six months in rural area of sorro district, southern ethiopia: A cross-sectional study. *Int Breastfeed J*. 2016;11:25-016-0085-6. eCollection 2016.
53. Tariku A, Alemu K, Gizaw Z, et al. Mothers' education and ANC visit improved exclusive breastfeeding in dabat health and demographic surveillance system site, northwest ethiopia. *PLoS One*. 2017;12(6):e0179056.
54. Tsegaye M, Ajema D, Shiferaw S, Yirgu R. Level of exclusive breastfeeding practice in remote and pastoralist community, aysaita woreda, afar, ethiopia. *International breastfeeding journal*. 2019;14(1):6.
55. Azeze GA, Gelaw KA, Gebeyehu NA, Gesese MM, Mokonnen TM. Exclusive breastfeeding practice and associated factors among mothers in boditi town, wolaita zone, southern ethiopia, 2018: A community-based cross-sectional study. *International journal of pediatrics*. 2019;2019.
56. Tamir. *Assessment of optimal breastfeeding among working and stay-at-home mothers in bahir dar town amhararegional state, north west of ethiopia*. Addis Ababa University; 2010.
57. Hailu H. *Assessment of knowledge, attitude and practice of exclusive breastfeeding among mothers attending selected public health institution in arada sub city, addis ababa, ethiopia*. ; 2015.
58. Worku F. *Assessment of factors associated with exclusive breastfeeding practice of employed and unemployed mother: A community based comparative cross sectional study woldiya, ethiopia 2014/15*. ; 2015.

59. Shifraw T, Worku A, Berhane Y. Factors associated exclusive breastfeeding practices of urban women in addis ababa public health centers, ethiopia: A cross sectional study. *International breastfeeding journal*. 2015;10(1):22.
60. Regassa N. Infant and child feeding practices among farming communities in southern ethiopia. *Kontakt*. 2014;16(4):e215-e222.
61. Chekol DA, Biks GA, Gelaw YA, Melsew YA. Exclusive breastfeeding and mothers' employment status in gondar town, northwest ethiopia: A comparative cross-sectional study. *International breastfeeding journal*. 2017;12(1):27.
62. Abera K. Infant and young child feeding practices among mothers living in harar, ethiopia. *Harar Bulletin of Health Sciences*. 2012;4:66-78.
63. Tewabe T. Timely initiation of breastfeeding and associated factors among mothers in motta town, east gojjam zone, amhara regional state, ethiopia, 2015: A cross-sectional study. *BMC Pregnancy Childbirth*. 2016;16(1):314.
64. Teka B, Assefa H, Hailelassie K. Prevalence and determinant factors of exclusive breastfeeding practices among mothers in enderta woreda, tigray, north ethiopia: A cross-sectional study. *International breastfeeding journal*. 2015;10(1):2.
65. Egata G, Berhane Y, Worku A. Predictors of non-exclusive breastfeeding at 6 months among rural mothers in east ethiopia: A community-based analytical cross-sectional study. *International breastfeeding journal*. 2013;8(1):8.
66. Sonko A, Worku A. Prevalence and predictors of exclusive breastfeeding for the first six months of life among women in halaba special woreda, southern nations, nationalities and peoples' region/SNNPR/, ethiopia: A community based cross-sectional study. *Arch Public Health*. 2015;73:53-015-0098-4. eCollection 2015.
67. Biks GA, Berhane Y, Worku A, Gete YK. Exclusive breast feeding is the strongest predictor of infant survival in northwest ethiopia: A longitudinal study. *J Health Popul Nutr*. 2015;34:9-015-0007-z.
68. Taddele M, Abebe L, Fentahun N. Exclusive breastfeeding and maternal employment in ethiopia: A comparative cross-sectional study. *Int J Nutr Food Sci*. 2014;3(6):497-503.
69. Tamiru D, Belachew T, Loha E, Mohammed S. Sub-optimal breastfeeding of infants during the first six months and associated factors in rural communities of jimma arjo woreda, southwest ethiopia. *BMC Public Health*. 2012;12:363-2458-12-363.
70. Dachew BA, Bifttu BB. Breastfeeding practice and associated factors among female nurses and midwives at north gondar zone, northwest ethiopia: A cross-sectional institution based study. *Int Breastfeed J*. 2014;9:11-4358-9-11. eCollection 2014.
71. Gultie T, Sebsibie G. Determinants of suboptimal breastfeeding practice in debre berhan town, ethiopia: A cross sectional study. *Int Breastfeed J*. 2016;11:5-016-0063-z. eCollection 2016.

72. Sefene A, Birhanu D, Awoke W, Taye T. Determinants of exclusive breastfeeding practice among mothers of children age less than 6 month in bahir dar city administration, northwest ethiopia; a community based cross-sectional survey. *Sci J Clin Med*. 2013;2(6):153-159.
73. Senarath U, Dibley MJ, Agho KE. Factors associated with nonexclusive breastfeeding in 5 east and southeast asian countries: A multilevel analysis. *Journal of Human Lactation*. 2010;26(3):248-257.
74. Pereira-Santos M, Santana MdS, Oliveira DS, et al. Prevalence and associated factors for early interruption of exclusive breastfeeding: Meta-analysis on brazilian epidemiological studies. *Revista Brasileira de Saúde Materno Infantil*. 2017;17(1):59-67.
75. Alzaheb RA. A review of the factors associated with the timely initiation of breastfeeding and exclusive breastfeeding in the middle east. *Clinical Medicine Insights: Pediatrics*. 2017;11:1179556517748912.
76. Li R, Darling N, Maurice E, Barker L, Grummer-Strawn LM. Breastfeeding rates in the united states by characteristics of the child, mother, or family: The 2002 national immunization survey. *Pediatrics*. 2005;115(1):e31-7.
77. Raj VK, Plichta SB. The role of social support in breastfeeding promotion: A literature review. *Journal of Human Lactation*. 1998;14(1):41-45.
78. Rempel LA, Rempel JK. The breastfeeding team: The role of involved fathers in the breastfeeding family. *Journal of Human Lactation*. 2011;27(2):115-121.
79. Seltzer JA. Families formed outside of marriage. *Journal of marriage and family*. 2000;62(4):1247-1268.
80. Boccolini CS, Carvalho MLd, Oliveira, Maria Inês Couto de. Factors associated with exclusive breastfeeding in the first six months of life in brazil: A systematic review. *Revista de saúde publica*. 2015;49:91.
81. Acharya P, Khanal V. The effect of mother's educational status on early initiation of breastfeeding: Further analysis of three consecutive nepal demographic and health surveys. *BMC Public Health*. 2015;15(1):1069.
82. Bich TH, Long TK, Hoa DP. Community-based father education intervention on breastfeeding practice—Results of a quasi-experimental study. *Maternal & child nutrition*. 2019;15:e12705.
83. Esteves TMB, Daumas RP, Oliveira, Maria Inês Couto de, Andrade, Carlos Augusto de Ferreira de, Leite IC. Factors associated to breastfeeding in the first hour of life: Systematic review. *Rev Saude Publica*. 2014;48:697-708.
84. Li R, Scanlon KS, Serdula MK. The validity and reliability of maternal recall of breastfeeding practice. *Nutr Rev*. 2005;63(4):103-110.
85. Salasibew MM, Filteau S, Marchant T. A qualitative study exploring newborn care behaviours after home births in rural ethiopia: Implications for adoption of essential interventions for saving newborn lives. *BMC Pregnancy Childbirth*. 2014;14:412-014-0412-0.

86. Sharma IK, Byrne A. Early initiation of breastfeeding: A systematic literature review of factors and barriers in south asia. *International breastfeeding journal*. 2016;11(1):17.
87. Gatrell CJ. Secrets and lies: Breastfeeding and professional paid work. *Soc Sci Med*. 2007;65(2):393-404.
88. Heymann J, Raub A, Earle A. Breastfeeding policy: A globally comparative analysis. *Bull World Health Organ*. 2013;91:398-406.
89. Khresheh R, Suhaimat A, Jalamdeh F, Barclay L. The effect of a postnatal education and support program on breastfeeding among primiparous women: A randomized controlled trial. *Int J Nurs Stud*. 2011;48(9):1058-1065.
90. Skouteris H, Nagle C, Fowler M, Kent B, Sahota P, Morris H. Interventions designed to promote exclusive breastfeeding in high-income countries: A systematic review. *Breastfeeding Medicine*. 2014;9(3):113-127.
91. World Health Organization. Global nutrition targets 2025: Policy brief series. *Global nutrition targets 2025: Policy brief series*. 2014.
92. Sinha B, Chowdhury R, Sankar MJ, et al. Interventions to improve breastfeeding outcomes: A systematic review and meta-analysis. *Acta Paediatrica*. 2015;104(S467):114-134.
93. Theurich MA, Davanzo R, Busck-Rasmussen M, et al. Breastfeeding rates and programs in europe: A survey of 11 national breastfeeding committees and representatives. *J Pediatr Gastroenterol Nutr*. 2019;68(3):400-407.