

1 **Specific diagnostic method for St. Louis Encephalitis Virus using a non-structural**  
2 **protein as antigen.**

3

4 **Simari, M.B.<sup>1</sup>; Goñi, S.E.<sup>1</sup>; Luppó, V.C<sup>2</sup>; Fabbri, C.M.<sup>2</sup>; Argüelles, M.H.<sup>3</sup>; Lozano,**  
5 **M.E.<sup>1</sup>; Morales, M.A.<sup>2</sup> and Iglesias, N.G.<sup>1\*</sup>**

6 <sup>1</sup>Laboratorio de Virus Emergentes, Departamento de Ciencia y Tecnología, Universidad  
7 Nacional de Quilmes. Bernal, Buenos Aires, Argentina. <sup>2</sup>Departamento de Investigación,  
8 Instituto Nacional de Enfermedades Virales Humanas “Dr. Julio Maiztegui”, (INEVH-ANLIS),  
9 Pergamino, Argentina. <sup>3</sup>Laboratorio de Inmunología y Virología, Departamento de Ciencia y  
10 Tecnología, Universidad Nacional de Quilmes, Bernal, Buenos Aires, Argentina.

11 \*Corresponding author.

12 [gabriel.iglesias@unq.edu.ar](mailto:gabriel.iglesias@unq.edu.ar)

13

14 **Abstract**

15 St. Louis encephalitis virus (SLEV) is a mosquito-borne reemerging flavivirus in  
16 Argentina. It is currently necessary to develop specific serological tests that can  
17 efficiently discriminate the flaviviruses that circulate in our country. The immunoassays  
18 to diagnose SLEV lack specificity because they are based on the detection of structural  
19 viral proteins and the human immunoglobulins produced during infection against these  
20 proteins cross-react with other flaviviruses. Here, we describe an enzyme-immunoassay  
21 designed to detect human IgG antibodies specific to the viral nonstructural protein NS5.  
22 The results indicate that NS5 is a promising antigen useful to discriminate SLEV from  
23 other circulating flaviviruses.

24

25 **Keywords:** SLEV diagnosis, *Flavivirus*, NS5.

26

NOTE: This preprint reports new research that has not been certified by peer review and should not be used to guide clinical practice.

## 27 **Manuscript**

28 St. Louis encephalitis virus (SLEV) is a *Flavivirus* (*Flaviviridae* family) transmitted by  
29 *Culex spp.* mosquitoes to birds, humans and other vertebrates are incidental hosts(1). In  
30 Argentina, SLEV is a re-emerging arbovirus broadly distributed with the potential to  
31 give rise to epidemics of human encephalitis. The symptoms of infection in humans  
32 ranged from a simple febrile headache to meningoencephalitis, and the severity of the  
33 symptoms increases with the patient age (1-5). Cross-reactivity in diagnostic assays  
34 between SLEV and other flaviviruses complicates differential diagnosis(6). This is  
35 particularly challenging in Argentina where there are dengue virus (DENV) outbreaks  
36 frequently, history of jungle yellow fever, and Zika virus (ZIKV) activity was  
37 demonstrated and YFV vaccination is common in some regions (7-10). The primary  
38 antigen used in assays intended for IgM and IgG detection during flavivirus infections  
39 has been the viral envelope (E) structural protein. However, the similarity of the  
40 flavivirus E proteins causes problems with cross-reactivity and false-positive test  
41 results, particularly in the acute and early convalescent phases. Plaque reduction  
42 neutralization testing (PRNT) is the gold standard for serological diagnosis of  
43 flavivirus, but this test is expensive, labor-intensive, and requires live virus  
44 manipulation.

45 Regarding the specific antiviral response pattern against SLEV, IgM antibodies  
46 persistence has been detected in some patients showing that the presence of IgM might  
47 not be indicative of acute infection (11, 12). Spinsanti *et al.* have shown that in 57% of  
48 the samples studied IgM antibodies persisted after a year of the infection. However, in  
49 IgM positive samples the diagnosis should be confirmed by PRNT to differentiate  
50 among *Flavivirus*. They have also demonstrated the persistence of the four subclasses of  
51 IgG antibodies for more than a year and the presence of IgG early after infection(11).

52 SLEV is an icosahedral single-stranded RNA virus of approximately 11 kb that encodes  
53 a single polyprotein that is processed co- and post-translationally to produce three  
54 structural proteins and seven non-structural proteins involved in virus replication(13).  
55 The non-structural protein NS5 is the viral methyl-transferase and RNA-dependent  
56 RNA polymerase(13). NS5 is an essential protein for viral RNA synthesis with a mean  
57 similarity among flaviviruses of 68%.

58 Due to the high cross-reactivity of the E protein among flavivirus it has been proposed  
59 the use of non-structural proteins as antigens for diagnosis. It has been demonstrated  
60 that IgM and IgG antibodies against non-structural proteins NS1, NS2B, NS3, and NS5  
61 are produced during flavivirus infections (14-20). Besides, antibodies against the non-  
62 structural proteins NS3 and NS5 have been detected in serum samples of patients  
63 infected with WNV and DENV(15, 16, 18-20), and an NS5-based assay has been shown  
64 to discriminate between WNV and DENV or SLEV infections(19). Recently, the use of  
65 recombinant NS5 of DENV serotype 2 as antigen has allowed differentiating serum  
66 samples of patients with primary and secondary DENV infections from serum samples  
67 of patients with JEV and WNV infections taken during the acute and convalescent  
68 phases(16, 18).

69 In this work, we developed an indirect enzyme immunoassay (EIA) using the purified  
70 full-length recombinant SLEV NS5 as antigen for the detection of IgG antibodies in  
71 human serum samples.

72 For antigen preparation, we cloned, expressed in *E. coli* and purified full-length NS5  
73 from SLEV CbaAr-4005 strain. CbaAr-4005 is a genotype III strain of SLEV isolated  
74 from *Culex quinquefasciatus* mosquitoes in Córdoba, Argentina, in 2005, during the  
75 largest SLEV outbreak ever reported in South America(21). After 2005 outbreak,  
76 additional SLEV outbreaks in Argentina occurred in provinces of Entre Ríos (2006),  
77 Buenos Aires (2010), and San Juan(2011) (5).

78 The NS5 expression and purification were carried out as previously described for  
79 DENV NS5 (22). Briefly, the DNA fragment containing the coding region of full-length  
80 NS5 was PCR amplified and cloned into the plasmid pET-28at *Bam*HI and *Xho*I sites,  
81 adding a six-histidine tag at the amino terminus of the proteins. The protein was  
82 expressed in *E. coli* overnight at 20°C after induction with IPTG. The lysis of the cells  
83 was carried out using a French press in phosphate binding buffer in the presence of  
84 DNase I and protease inhibitor cocktail (Sigma). After centrifugation, NS5 was purified  
85 on a His-Trap nickel Sepharose affinity column (GE Healthcare) using the standard  
86 procedure. The protein was dialyzed against 20 mM Tris-HCl buffer, pH 7.5, 300 mM  
87 NaCl, 10% glycerol, and 1 mM dithiothreitol. The dialyzed protein solution was further  
88 purified by size exclusion chromatography using a Superdex 200 column. Figure 1  
89 shows an SDS-PAGE of samples collected through the protein purification protocol.  
90 Approximately 3 mg of pure SLEV NS5 protein per liter of cell culture were obtained.  
91 Anonymized barcode serum samples obtained from patients with febrile symptoms and  
92 flavivirus infection confirmed or discharged at the National Reference Laboratory  
93 (INEVH-ANLIS) were selected to evaluate the performance of the immunologic assay  
94 described in this article. Plaque-reduction neutralization test (PRNT) was used as the  
95 reference method for this evaluation. To perform this method, serum samples were heat  
96 inactivated at 56°C for 30 min; and two-fold serially diluted, from 1:20 to 1:2560.  
97 Replicates of all dilutions of each serum sample were incubated, at 37 °C for 1 h, with  
98 100 plaque-forming units (PFU) of WNV (ChimeriVax™ WNV strain), SLEV  
99 (ChimeriVax™ SLEV strain), DENV-1 (Hawaii strain), DENV-2 (NGC strain),  
100 DENV-3 (H87 strain), DENV-4 (H241 strain), WNV(ChimeriVax™ WNV strain),  
101 YFV (vaccine 17D-YEL strain) and ZIKV(ARCB116141 strain). After incubation, 100  
102 µl of each virus-serum mixture were inoculated onto a 12-well plate monolayer of Vero  
103 C76 cells (80% confluent growth) and absorbed for 1 h at 37°C. First overlay medium

104 (containing low-melting point agarose (GIBCO BRL, Life Technologies) Hank's BSS,  
105 vitamins, amino acids, heat-inactivated calf serum, L-glutamine, and 7.5% sodium  
106 bicarbonate) was added, 0.5 mL per well and allowed to solidify for 15 minutes. The  
107 plates where SLEV and WNV were tested were incubated for four days; and plates  
108 where DENV 1-4, YFV and ZIKV were assayed were incubated for 5 days. Neutral red  
109 staining was performed by adding a neutral red second overlay (same as above without  
110 fetal calf serum and containing 4% Neutral Red [Sigma Chemical, St. Louis, MO]), 0.5  
111 mL per well and allowed to solidify for 15 minutes. Plates were incubated overnight at  
112 37°C with 4% CO<sub>2</sub> and plaques were counted and titers were calculated and expressed  
113 as the reciprocal of the serum dilution yielding a ≥90% reduction in PFU (PRNT<sub>90</sub>).  
114 The results of the PRNT are shown in table 1. Fifty-nine sera were analyzed, 19 were  
115 positive for SLEV, 14 DENV positive (85.7% DENV- 1, 7.1 % DENV-2, 7.1 % without  
116 serotype), 9 YFV positive, 4 ZIKV positive, and 14 were negative for the analyzed  
117 viruses. Monotypic or heterotypic patterns were differentiated according to whether the  
118 serum was positive to one or several flaviviruses, respectively. In heterotypic patterns,  
119 interpretation of PRNT data was as follows: samples with a neutralizing antibody titer  
120 (PRNT<sub>90</sub>) ≥ four-fold higher than the other flavivirus titers were considered positive for  
121 antibody to that virus. Using these samples representative of the flavivirus that co-  
122 circulate in our country we evaluated our enzyme immunoassay. We developed a  
123 standard indirect immunoassay to detect SLEV NS5-specific IgG in human sera. For  
124 this purpose, we determined an optimum NS5 concentration of 500 ng/well and a  
125 dilution 1:100 of serum samples. The antigen was coated overnight at 4°C in a 96-  
126 microwell plate in a solution containing 50 mM Na<sub>2</sub>CO<sub>3</sub>, pH 9.6. After coating, the  
127 plates were washed three times with PBS and blocked with casein 0.2% in PBS  
128 (blocking solution) at 37°C for 1 h. Later, sera from patients were diluted 1:100 in  
129 blocking solution and incubated at 37°C for 2 h. Then, the plates were PBS washed and

130 incubated with HRP conjugated anti-human IgG antibody (Abcam) 1:2000 at 37°C for  
131 2h. After washing the plates, ABTS (KPL labs) peroxidase substrate was added and  
132 after 15 min the reaction was stopped with SDS and the optical density at 405 nm was  
133 determined.

134 Based on PRNT90 results we separated the samples into three groups: SLEV positive,  
135 other positive flavivirus and negative samples. The results clearly show that the assay  
136 efficiently discriminates SLEV positives samples from positive samples for other  
137 flavivirus or negative samples (Figure 2). Figure 3 shows the results for each individual  
138 serum sample. The cut-off to considerate a sample as positive by EIA was determined  
139 as 0.3, calculated as the mean value of negative samples plus two standard deviations.  
140 Taking into account this value, 16 out of 19 samples considered positive by PRNT were  
141 also positive by EIA (84%). Interestingly, the sera of SLEV infected patients (both  
142 homotypic and heterotypic pattern) can react with the recombinant NS5 protein, and no  
143 positive sample for DENV, YFV, ZIKV or WNV resulted positive in our assay. This is  
144 important since the presence of antibodies against NS5 in sera from patients infected  
145 with SLEV had never been reported. Using NS5 as an antigen for IgG detection we  
146 were able to avoid cross-reaction with antibodies to other flaviviruses. Although the  
147 number of serum positive samples for other flaviviruses was limited the results suggest  
148 that this test could be useful as a diagnostic method for SLEV infections. Further studies  
149 with a larger panel of serum samples will be necessary to validate this method. The  
150 three negative samples (9, 10, and 44) had low antibodies titers as judged by PRNT90,  
151 which could explain the negative result observed in our EIA. Although PRNT is the  
152 gold standard method we cannot rule out that the results observed for these samples are  
153 not due to cross reactivity against some other flavivirus not tested here (e.g., *Ilheus*  
154 *virus*, *Bussuquara virus*). The specificity of NS5-based EIA might reduce or eliminate

155 the need for PRNT and therefore the requirement of BSL3 to the diagnosis of SLEV.  
156 Also, EIA is a 1 to 2-day assay compared with PRNT that is a 5 to 7-day assay.  
157 In Argentina different flaviviruses that can produce similar clinical symptoms co-  
158 circulate. The laboratory diagnosis is crucial to determine the etiological agent causing  
159 the disease. Molecular methods (RT-PCR) are useful during the acute-phase, and then  
160 serological methods should be used. In our assay, we were able to detect IgG antibodies  
161 against NS5 in samples collected from five to 175 days after the onset of the symptoms  
162 (Table 1 and figure 3), this includes the acute and the convalescent phase.  
163 The complexity of flavivirus diagnosis requires developing novel diagnostic methods,  
164 that, combined with those existing, allow us properly identifying these viruses.  
165 In conclusion, we show that the EIA test based on NS5 is a potential diagnostic method  
166 for SLEV that avoids cross-reactivity with other flaviviruses and implies a less  
167 laborious and expensive method, safer and feasible to introduce in laboratories of low  
168 complexity.  
169

## 170   **References**

- 171    1.     Reisen WK. Epidemiology of St. Louis encephalitis virus. *Advances in virus*  
172    research. 2003;61:139-83. Epub 2004/01/13.
- 173    2.     Seijo A, Morales A, Poustis G, Romer Y, Efron E, Vilora G, et al. [Outbreak of  
174    St. Louis encephalitis in the Metropolitan Buenos Aires Area]. *Medicina*.  
175    2011;71(3):211-7. Epub 2011/07/13. Brote de encefalitis de San Luis en el area  
176    metropolitana Buenos Aires.
- 177    3.     Morales MA, Fabbri CM, Zunino GE, Kowalewski MM, Luppo VC, Enria DA,  
178    et al. Detection of the mosquito-borne flaviviruses, West Nile, Dengue, Saint Louis  
179    Encephalitis, Ilheus, Bussuquara, and Yellow Fever in free-ranging black howlers  
180    (*Alouatta caraya*) of Northeastern Argentina. *PLoS neglected tropical diseases*.  
181    2017;11(2):e0005351. Epub 2017/02/12.
- 182    4.     Spinsanti LI, Diaz LA, Glatstein N, Arselan S, Morales MA, Farias AA, et al.  
183    Human outbreak of St. Louis encephalitis detected in Argentina, 2005. *Journal of*  
184    *clinical virology : the official publication of the Pan American Society for Clinical*  
185    *Virology*. 2008;42(1):27-33. Epub 2008/02/06.
- 186    5.     Diaz A, Coffey LL, Burkett-Cadena N, Day JF. Reemergence of St. Louis  
187    Encephalitis Virus in the Americas. *Emerging infectious diseases*. 2018;24(12). Epub  
188    2018/11/21.
- 189    6.     Hobson-Peters J. Approaches for the development of rapid serological assays for  
190    surveillance and diagnosis of infections caused by zoonotic flaviviruses of the Japanese  
191    encephalitis virus serocomplex. *Journal of biomedicine & biotechnology*.  
192    2012;2012:379738. Epub 2012/05/10.
- 193    7.     Morales MA, Fabbri CM. Estado actual del diagnóstico de dengue, chikungunya  
194    y Zika y otros arbovirus en Argentina. *Actualizaciones en SIDA E INFECTOLOGÍA*.  
195    2016;24(93):111-7.
- 196    8.     Artsob H, Gubler DJ, Enria DA, Morales MA, Pupo M, Bunning ML, et al. West  
197    Nile Virus in the New World: trends in the spread and proliferation of West Nile Virus  
198    in the Western Hemisphere. *Zoonoses and public health*. 2009;56(6-7):357-69. Epub  
199    2009/06/03.
- 200    9.     Goenaga S, Fabbri C, Duenas JC, Gardenal CN, Rossi GC, Calderon G, et al.  
201    Isolation of yellow fever virus from mosquitoes in Misiones province, Argentina.  
202    *Vector Borne Zoonotic Dis*. 2012;12(11):986-93. Epub 2012/10/03.



- 203 10. Tellechea AL, Luppo V, Morales MA, Groisman B, Baricalla A, Fabbri C, et al.  
204 Surveillance of microcephaly and selected brain anomalies in Argentina: Relationship  
205 with Zika virus and other congenital infections. *Birth defects research*.  
206 2018;110(12):1016-26. Epub 2018/06/20.
- 207 11. Spinsanti LI, Farias AA, Aguilar JJ, del Pilar Diaz M, Contigiani MS.  
208 Immunoglobulin G subclasses in antibody responses to St. Louis encephalitis virus  
209 infections. *Archives of virology*. 2011;156(10):1861-4. Epub 2011/06/21.
- 210 12. Monath TP, Nystrom RR, Bailey RE, Calisher CH, Muth DJ. Immunoglobulin  
211 M antibody capture enzyme-linked immunosorbent assay for diagnosis of St. Louis  
212 encephalitis. *Journal of clinical microbiology*. 1984;20(4):784-90. Epub 1984/10/01.
- 213 13. Lindenbach B. TH, and Rice, CM. *Flaviviridae: the viruses and their replication*.  
214 In: *Fields Virology*. Philadelphia: Lippincott-Raven; 2007. 1101-52 p.
- 215 14. Lorch MS, Collado MS, Arguelles MH, Rota RP, Spinsanti LI, Lozano ME, et  
216 al. Production of recombinant NS1 protein and its possible use in encephalitic flavivirus  
217 differential diagnosis. *Protein expression and purification*. 2019;153:18-25. Epub  
218 2018/08/21.
- 219 15. Valdes K, Alvarez M, Pupo M, Vazquez S, Rodriguez R, Guzman MG. Human  
220 Dengue antibodies against structural and nonstructural proteins. *Clinical and diagnostic  
221 laboratory immunology*. 2000;7(5):856-7. Epub 2000/09/06.
- 222 16. Narayan R, Raja S, Kumar S, Sambasivam M, Jagadeesan R, Arunagiri K, et al.  
223 A novel indirect ELISA for diagnosis of dengue fever. *The Indian journal of medical  
224 research*. 2016;144(1):128-33. Epub 2016/11/12.
- 225 17. Mishra N, Caciula A, Price A, Thakkar R, Ng J, Chauhan LV, et al. Diagnosis of  
226 Zika Virus Infection by Peptide Array and Enzyme-Linked Immunosorbent Assay.  
227 *mBio*. 2018;9(2). Epub 2018/03/08.
- 228 18. Zhang T, Wang ML, Zhang GR, Liu W, Xiao XQ, Yang YS, et al. Recombinant  
229 DENV 2 NS5: An effective antigen for diagnosis of DENV infection. *Journal of  
230 virological methods*. 2019;265:35-41. Epub 2018/12/19.
- 231 19. Wong SJ, Boyle RH, Demarest VL, Woodmansee AN, Kramer LD, Li H, et al.  
232 Immunoassay targeting nonstructural protein 5 to differentiate West Nile virus infection  
233 from dengue and St. Louis encephalitis virus infections and from flavivirus vaccination.  
234 *Journal of clinical microbiology*. 2003;41(9):4217-23. Epub 2003/09/06.
- 235 20. Alvarez-Rodriguez LM, Ramos-Ligonio A, Rosales-Encina JL, Martinez-  
236 Cazares MT, Parissi-Crivelli A, Lopez-Monteon A. Expression, purification, and  
237 evaluation of diagnostic potential and immunogenicity of a recombinant NS3 protein

238 from all serotypes of dengue virus. Journal of tropical medicine. 2012;2012:956875.  
239 Epub 2012/12/22.

240 21. Diaz LA, Nemeth NM, Bowen RA, Almiron WR, Contigiani MS. Comparison  
241 of argentinean saint louis encephalitis virus non-epidemic and epidemic strain infections  
242 in an avian model. PLoS neglected tropical diseases. 2011;5(5):e1177. Epub  
243 2011/06/02.

244 22. Iglesias NG, Filomatori CV, Gamarnik AV. The F1 motif of dengue virus  
245 polymerase NS5 is involved in promoter-dependent RNA synthesis. Journal of virology.  
246 2011;85(12):5745-56. Epub 2011/04/08.

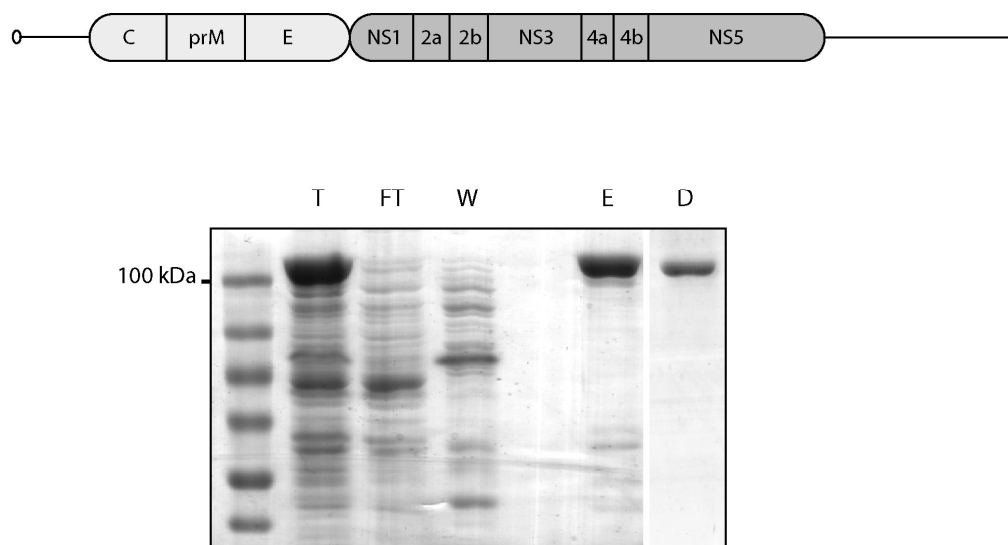
247  
248

249 **Table 1.** PRNT<sub>90</sub> titers for 8 flaviviruses.

ID	Days after symptoms onset	PRNT <sub>90</sub> Titer								Result Interpretation
		DENV 1	DENV 2	DENV 3	DENV 4	SLEV	WNV	YFV	ZIK V	
1	6	<10	<10	<10	<10	320	10	80	<10	SLEV
2	8	<10	<10	<10	<10	320	10	80	<10	SLEV
3	13	<20	<20	<20	<20	160	<20	<20	<20	SLEV
4	25	<20	<20	<20	<20	80	<20	<20	<20	SLEV
5	12	<10	20	10	<10	40	10	<10	<10	SLEV
6	57	<10	20	10	10	>80	10	<10	<10	SLEV
7	5	<10	<10	<10	<10	40	<10	<10	<10	SLEV
8	24	<10	<10	<10	<10	160	<10	<10	<10	SLEV
9	4	<20	<20	<20	<20	20	<20	<20	<20	SLEV
10	16	<40	<40	<40	<40	40	<40	<40	<40	SLEV
11	175	<40	<40	<40	<40	80/320	<40	<40	<40	SLEV
12	5	<20	<20	<20	<20	40	<20	<20	<20	SLEV
13	62	<40	<40	<40	<40	80	<40	<40	<40	SLEV
14	30	<40	<40	<40	<40	80	<40	<40	<40	SLEV
15	70	<40	<40	<40	<40	80	<40	40	<40	SLEV
16	8	<40	<40	<40	<40	<40	<40	<40	<40	NEG
17	8	<20	<20	<20	<20	<20	<20	<20	<20	NEG
18	9	160	<20	<20	<20	<20	<20	<20	<20	DENV-1
19	24	320	80	80	40	<40	<40	<40	<40	DENV-1
20	13	<40	<40	<40	<40	<40	<40	<40	<40	NEG
21	25	<20	<20	<20	<20	<20	<20	<20	<20	NEG
22	1	<20	<20	<20	<20	<20	<20	<20	<20	NEG
23	15	<20	<20	<20	<20	<20	<20	<20	<20	NEG
24	7	<20	<20	<20	<20	<20	<20	<20	<20	NEG
25	20	<40	<40	<40	<40	<40	<40	<40	<40	NEG
26	NA	<20	<20	<20	<20	<20	<20	<20	<20	NEG
27	5	<20	<20	<20	<20	<20	<20	<20	40	ZIKV
28	12	<40	<40	<40	<40	<40	<40	<40	40	ZIKV
29	11	20	20	<20	<20	<20	<20	<20	<20	DENV
30	22	<40	40	<40	<40	<40	<40	<40	<40	DENV-2
31	9	<20	<20	<20	<20	<20	<20	<20	<20	NEG
32	NA	<20	<20	<20	<20	<20	<20	80	<20	YFV
33	NA	<20	<20	<20	<20	<20	<20	20	<20	YFV
34	12	80	20	20	<20	<20	<20	<20	<20	DENV-1
35	19	160	<40	<40	<40	<40	<40	<40	<40	DENV-1
36	17	<40	<40	<40	<40	<40	<40	320	<40	YFV
37	32	<20	<20	<20	<20	<20	<20	160	<20	YFV
38	NA	<40	<40	<40	<40	<40	<40	>1280	<40	YFV
39	8	160	<20	<20	<20	<20	<20	<20	<20	DENV-1
40	19	160	40	40	<40	<40	<40	<40	<40	DENV-1
41	8	320	<20	<20	<20	<20	<20	<20	<20	DENV-1
42	22	>1280	40	40	<40	<40	<40	<40	<40	DENV-1
43	5	<20	<20	<20	<20	20	<20	<20	<20	SLEV
44	69	<40	<40	<40	<40	40	<40	<40	<40	SLEV
45	5	<20	<20	<20	<20	<20	<20	320	<20	YFV
46	NA	>640	20	<20	<20	<20	<20	<20	<20	DENV-1
47	NA	<40	<40	<40	<40	<40	<40	<40	<40	NEG
48	10	<20	<20	<20	<20	20	<20	<20	<20	SLEV
49	34	<40	<40	<40	<40	40	<40	<40	<40	SLEV
50	16	160	<20	20	<20	<20	<20	<20	<20	DENV-1
51	31	160	<40	<40	<40	<40	<40	<40	<40	DENV-1
52	8	<20	<20	<20	<20	<20	<20	>640	<20	YFV
53	18	<40	<40	<40	<40	<40	<40	640	<40	YFV
54	22	<20	<20	<20	<20	<20	<20	<20	<20	NEG
55	7	<40	<40	<40	<40	<40	<40	<40	<40	NEG
56	NA	640	80	80	<40	<40	<40	<40	<40	DENV-1
57	17	<40	<40	<40	<40	<40	<40	160	<40	YFV
58	NA	<40	<40	<40	<40	40	80	<40	320	ZIKV
59	NA	ND	ND	ND	ND	ND	ND	ND	ND	WNV*

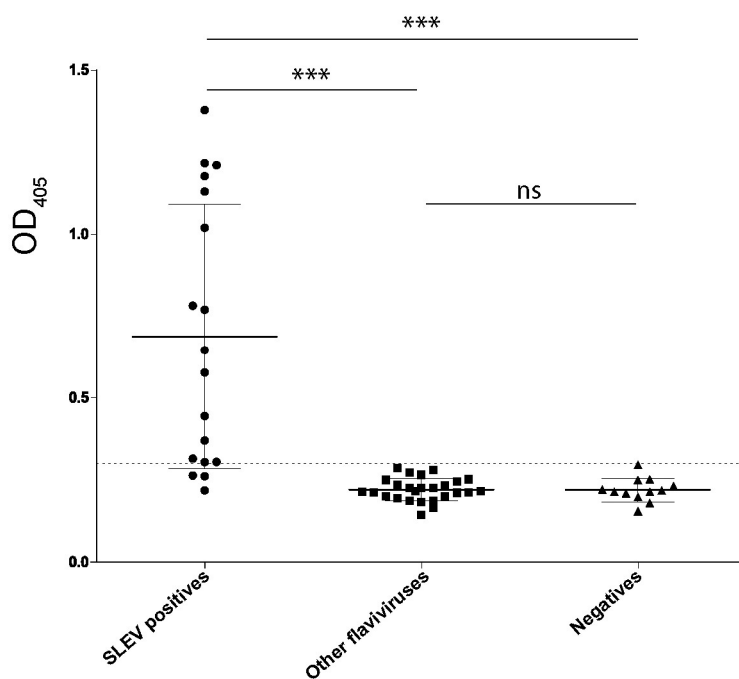
250 \*IgM e IgG positive in “in-house” ELISA.

251



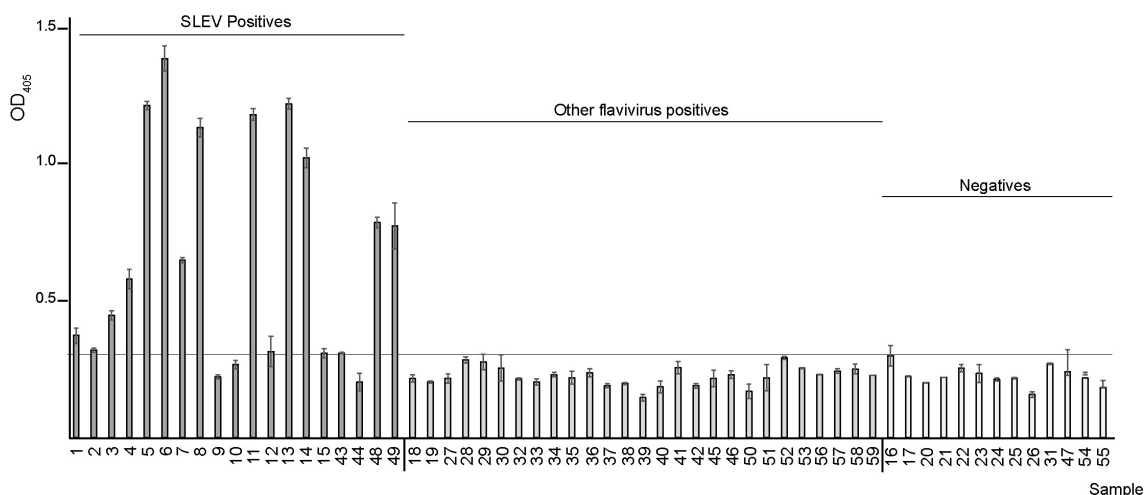
252 **Figure 1. SLEV NS5 purification.** At the upper panel SLEV genome structure. Lower  
253 panel coomassie stained SDS-PAGE: T, total soluble extract injected into IMAC  
254 column. FT, flow through. W, washed fraction. E, eluted protein from IMAC. D,  
255 Superdex purified and dialyzed protein.

256



257 **Figure 2. NS5 immuno-assay from serum samples.** The error bars indicate the  
258 standard deviations. Statistical significance by one-way ANOVA analysis.

259



260

261 **Figure 3. EIA NS5 IgG detection from individual samples.** Results showed as mean  
262  $\pm$  SD (\*\* $p < 0.01$ , ns: non-significant).

263

### 264 Acknowledgements

265 This work was funded by grants from Universidad Nacional de Quilmes and Florencio  
266 Fiorini Foundation. NGI and MEL are members of the Argentinean Council of  
267 Investigation (CONICET). MBS was granted with a CIC-BA (Commission of Scientific  
268 Investigations of Buenos Aires, Argentina) fellowship. We are grateful to Laboratorio  
269 de Arenavirus y Arbovirus, Instituto de Virología “Dr. J.M. Vanella”, Facultad de  
270 Ciencias Médicas, Universidad Nacional de Córdoba (UNC), Argentina, for the genetic  
271 material of SLEV CbaAr-4005 strain.

272

273

274 *The authors declare that there is no conflict of interest regarding the publication of*  
275 *this article.*