

1 **IMPACT OF COVID-19 ON TUBERCULOSIS CASE DETECTION IN VIET NAM: A MODELLING**  
2 **ANALYSIS**

3 **Viet Long Bui<sup>1,\*</sup>, Romain Ragonnet<sup>1</sup>, Angus E. Hughes<sup>1</sup>, David S. Shipman<sup>1</sup>, Emma S.**  
4 **McBryde<sup>2</sup>, Binh Hoa Nguyen<sup>3,4</sup>, Hoang Nam Do<sup>3,4</sup>, Thai Son Ha<sup>5</sup>, Greg J. Fox<sup>6,7</sup>, James M.**  
5 **Trauer<sup>1</sup>**

6 <sup>1</sup> School of Public Health and Preventive Medicine, Monash University, Melbourne, Victoria,  
7 Australia

8 <sup>2</sup> Centre for Clinical Research, The University of Queensland, Brisbane, Queensland, Australia

9 <sup>3</sup> National Lung Hospital, Ha Noi, Viet Nam

10 <sup>4</sup> National Tuberculosis Program, Ha Noi, Viet Nam

11 <sup>5</sup> Administration of Medical Services, Ministry of Health, Ha Noi, Viet Nam

12 <sup>6</sup> Faculty of Medicine and Health, The University of Sydney, Sydney, New South Wales, Australia

13 <sup>7</sup> The Woolcock Institute for Medical Research, Glebe, New South Wales, Australia

14 \* Corresponding author, email: [viet.bui1@monash.edu](mailto:viet.bui1@monash.edu).

15 Word count: 3271

16

17

18

19 **ABSTRACT**

20 **Background**

21 Viet Nam, a high-burden tuberculosis (TB) country, observed marked declines in TB notifications  
22 during the COVID-19 pandemic. We sought to determine whether and how COVID-19-related  
23 factors have influenced TB transmission and control, as well as their long-term effects, aiming to  
24 inform and enhance TB control strategies.

25 **Methods**

26 We developed a compartmental TB transmission model to estimate COVID-19's impact on TB  
27 detection and transmission in Vietnam. We simulated future scenarios to evaluate the potential  
28 benefits of enhanced TB case detection.

29 **Results**

30 The COVID-19 pandemic significantly impacted TB control in Viet Nam, leading to a sharp decline  
31 in case detection in 2021. This resulted in approximately 1,900 new TB episodes (95% credible  
32 interval [CrI]: 200 - 5,100) and 1,100 TB-related deaths (95% CrI: 100 - 2,700) in that year.  
33 Projections suggest that by 2035, these disruptions could contribute to 22,000 additional TB  
34 episodes (95% CrI: 1,900 - 63,000) and 5,900 more deaths (95% CrI: 600 - 16,600). We predicted  
35 two hypothetical scenarios of enhancing TB case detection. Under the ambitious scenario,  
36 enhancing TB case detection could mitigate these potential impacts by preventing 17.8% of new TB  
37 episodes (95%CrI: 13.1% - 21.9%) and 34.2% (95%CrI: 31.5% - 37.0%) of TB-related deaths by  
38 2035, compared to no enhancement.

39 **Conclusions**

40 COVID-19 disruptions have created a backlog of undiagnosed TB cases, increasing transmission  
41 and mortality. Sustained investment in diagnostics, healthcare resilience, and proactive policies is  
42 essential to mitigate long-term consequences.

43 **Keywords:** Mycobacterium tuberculosis, COVID-19 pandemic, Case detection, Transmission  
44 dynamic model, compartmental model.

## 45 INTRODUCTION

46 Tuberculosis (TB), the disease caused by the bacterium *Mycobacterium tuberculosis* (*M.tb*),  
47 remains a critical global public health challenge [1]. Viet Nam, as a high-burden country, exemplifies  
48 the difficulties in controlling TB [1]. Its continuing high burden highlights the urgent need for  
49 improved public health strategies, and understanding its epidemic drivers may offer valuable  
50 insights for addressing TB in similar settings globally.

51 The COVID-19 pandemic severely disrupted global TB control, causing significant declines in TB  
52 notifications in high-burden countries like India, South Africa, Brazil, and Indonesia [2–4]. Prior  
53 research identified an 8% decrease in TB notifications in Viet Nam attributable to pandemic effects  
54 [5]. The World Health Organization (WHO) reported an 18% global decline in TB notifications in  
55 2020, with an estimated 200,000–400,000 additional TB deaths [2, 6]. WHO's assessments rely on  
56 national TB program reports [7], which may underestimate the true burden due to undiagnosed  
57 cases and limited surveillance capacity. Initial projections were based on notification trends rather  
58 than dynamic transmission models, which may not be the optimal approach to predicting long-term  
59 TB impact estimates. The reduction in TB notifications may be attributable to healthcare disruptions,  
60 resource diversion, reduced healthcare-seeking behavior or some combination of these factors.  
61 However, COVID-19 measures like mask-wearing and social distancing may have reduced TB  
62 transmission, which are not accounted for in WHO's early estimates [6].

63 To address these challenges, we developed a deterministic compartmental model to simulate the  
64 transmission dynamics of *M.tb* in Viet Nam. Through this model, we aimed to quantify the long-term  
65 impacts of COVID-19 on TB control over the next decade.

## 66 METHODS:

### 67 1. Model structure

68 We developed a deterministic compartmental model comprising six compartment types -  
69 Susceptible (S), Early latent (E), Late latent (L), Active TB or infectious (I), Treatment (T), and  
70 recovered (R) - to represent different TB-related infection and disease states, using a similar  
71 conceptual approach and assumptions as our previously published model [8]. A detailed description  
72 of the model structure and all associated methods are provided in the Supplemental Material.

73 We stratified these base compartments into six age groups (0–4, 5–14, 15–34, 35–49, 50–69, and  
74 70+ years) to capture demographic processes of birth, aging, and death, as well as age-specific  
75 contact patterns informed by a contact survey performed in Viet Nam [9]. Model compartments were  
76 further stratified by pulmonary/smear status into smear-positive, smear-negative and  
77 extrapulmonary forms of TB (SPTB, SNTB and EPTB) to account for differences in infectiousness,  
78 detection, and fatality risks.

79 The reduction in TB notifications during the COVID-19 pandemic could plausibly be attributable to  
80 reduced case detection, decreased transmission, or both. To model these effects, we considered  
81 four candidate assumptions: Assumption 1, the COVID-19 pandemic had no impact on either TB  
82 case detection or transmission; Assumption 2, only case detection was reduced, reflecting the  
83 decline in healthcare access, while TB transmission remained unaffected; Assumption 3, only TB  
84 transmission was reduced, with PHSMs limiting transmission, but case detection continued  
85 unaffected; Assumption 4, both case detection and TB transmission were reduced, incorporating the  
86 effects of both PHSMs and healthcare disruptions.

## 87 **2. Parameterization and calibration**

88 Table S6 (Supplementary Material) presents all model parameters. Table S7  
89 (Supplementary Material) specifies the prior distributions for the model parameters that were varied  
90 through our calibration algorithm, including contact rate, natural history-related, and latency-related  
91 parameters.

92 One of the key parameters in our model was rate of commencing treatment of active TB, the rate at  
93 which individuals with active TB (I) transition to the treatment compartment (T). This rate is the  
94 reciprocal of the average time from developing active TB to first presentation and treatment initiation  
95 under the NTP and the diagnostic algorithm's sensitivity, accounting for the relative difficulty  
96 diagnosing SNTB and EPTB compared to SPTB. The average time from developing active TB to  
97 first presentation and treatment initiation reflects the delays attributable to the patient, provider, and  
98 health system factors, which can lead to delayed diagnoses. We used a smooth transition function  
99 that gradually increased with the historical improvements in the availability of TB diagnostics and  
100 treatments. More details are provided in the Supplementary Material.

101 In our model, the impacts of COVID-19 on TB transmission and case detection were incorporated  
102 through the use of reduction factors with minimally informative priors from 0.01 to 0.9. Specifically,  
103 under Assumptions 2 and 4, these reduction factors are applied to the rate of treatment  
104 commencement, while under Assumptions 3 and 4, they are applied to the contact rate. These  
105 factors were varied under the calibration process to capture the possible impact.

106 We calibrated our model to align with local data, including total national population size (2019  
107 Vietnam Population and Housing Census [10]), TB notifications (reported to WHO [11]), and the  
108 prevalence of bacteriologically-confirmed and of SPTB among adults (the second national TB  
109 prevalence survey [12]) (Table S8, Supplementary Materials). The best assumption regarding  
110 COVID-19 impacts on TB dynamics was identified by comparing the expected log pointwise  
111 predictive density Watanabe-Akaike Information Criterion (EPLD-WAIC) values across four  
112 scenarios, with less negative values indicating better predictive performance [13].

### 113 **3. Future projections**

114 Using the best candidate assumption, we assessed the impact of the COVID-19 pandemic  
115 on TB control by projecting new TB episodes and TB-related deaths from 2025 to 2035. We  
116 compared a baseline scenario, reflecting ongoing TB control challenges including pandemic

117 disruptions, with a counterfactual scenario where COVID-19 had no impact on TB detection. Finally,  
118 we evaluated the potential impact of future interventions to enhance case detection activities  
119 between 2025 and 2035. We considered a 2-fold and 5-fold increase in the rate of commencing  
120 treatment by 2035. For each scenario, we estimated the total number of new TB episodes and TB-  
121 related deaths averted.

## 122 **4. Software**

123 We used *summer*, a Python-based epidemiological modelling framework [14], and the  
124 *estival* package for facilitating optimization and calibration, along with the external libraries  
125 *nevergrad* [15] and the DEMetropolisZ [16] algorithm from *PyMC*. Our model development,  
126 optimization, and calibration followed a pipeline equivalent to that detailed in [17]. The code used  
127 for the analyses are accessible in a GitHub repository at: <https://github.com/vlbui/tbdynamics>.

## 128 **RESULTS**

### 129 **1. Calibration results**

#### 130 **Candidate model comparison**

131 All four assumptions closely matched the total population size and the prevalence of TB  
132 among adults, as shown in Figures S3 and S4. However, the fit varied when comparing the actual  
133 number of TB case notifications to the equivalent model output. Figure 2 shows this comparison  
134 under our four candidate assumptions regarding the effect of COVID-19 on *M.tb* dynamics. Among  
135 the assumptions, Assumption 2 provided the best fit to the observed sharp decline in TB  
136 notifications in 2021, slightly outperforming Assumption 4 based on our assessment with the EPLD-  
137 WAIC (see Table S6). In contrast, Assumption 1 and Assumption 3 (COVID-19 only reduced  
138 transmission) showed a poorer fit to the data.

139 Based on this preceding analysis, we selected Assumption 2 as our primary model for the following  
140 in-depth examination of *M.tb* dynamics in Viet Nam. Figure 3 illustrates the comparison between

141 accepted model runs, each calibration target, and other epidemiological estimates not included in  
142 our calibration algorithm that we considered for model validation. Figure S5 presents model outputs  
143 derived from the 50 randomly accepted model runs.

144 Table S7 (Supplementary Material) details the posterior estimates and calibration metrics for the  
145 calibrated parameters of our preferred candidate model. The algorithm demonstrated highly  
146 satisfactory chain convergence, as evidenced by each parameter's Gelman-Rubin statistic ( $\hat{R}$ ) being  
147 below 1.05 and all effective sample sizes exceeding 150. Figure S6 shows the trace plots for each  
148 parameter, illustrating their convergence and stability throughout the execution of the calibration  
149 algorithm. Figure S7 (Supplementary Material) overlays posterior distributions on the corresponding  
150 priors of the calibrated parameters. The posterior estimate for the reduction of COVID-19 on case  
151 detection was 0.33 with 94% high density interval ranging from 0.01 to 0.677. Figure S8  
152 (Supplementary Material) shows how the posterior distributions for the natural history parameters  
153 translate into the more epidemiologically intuitive quantities of disease duration and case fatality  
154 rate for SPTB and SNTB.

155 Given the lack of historical data, the first 200 years of the simulation exhibited significant uncertainty,  
156 which progressively diminished in later years (Figure S10). Our calibration algorithm simulated a  
157 peak in adult pulmonary TB prevalence that began to decline from around 1986, coinciding with the  
158 establishment of the NTP. By 2017, the model predicted an adult pulmonary TB prevalence of 328  
159 cases per 100,000 populations (95% CrI: 269–399), closely matching our prevalence survey target,  
160 which estimated bacteriologically-confirmed TB among adults at 322 (confidence interval – CI: 260–  
161 399) per 100,000 in 2017 [12].

162 We estimated TB incidence in 2022 at 153 cases per 100,000 population (95% CrI: 117 - 202),  
163 which closely matches the WHO's 2022 estimate of 176 cases per 100,000 (95% CI: 121 - 251) [11].  
164 We estimated that approximately 18,000 people have died from TB each year since 2010, or about  
165 18 deaths per 100,000 population. Our modelled prevalence of adult SPTB aligned closely with the

166 results of the 2007 national prevalence survey (95 per 100,000, 95% CrI: 72 - 127, compared to 99  
167 per 100,000, 95% CI: 78 - 125) [18], but was somewhat higher than the 2017 survey results (73  
168 cases per 100,000, 95% CrI: 59 - 88, compared to 46 cases per 100,000, 95% CI: 32 - 68) [12].  
169 Figure S9 (Supplementary Material) illustrates the proportion of active TB cases originating from the  
170 early latent phase, highlighting that 50% or more of these cases were due to early progression and  
171 therefore recent transmission throughout most of the recent simulation period. A minor increase in  
172 the proportional contribution of recent transmission was observed in 2021 during the COVID-19  
173 pandemic. The modelled prevalence of LTBI in 2019 was 45% of the total population (95%CrI: 39%  
174 - 51%). This aligns closely with the estimate from Ding et al. [19], which places the LTBI prevalence  
175 at around 44% of the population, also within our CrI. Figure S109 (Supplementary Material) shows  
176 the proportions of the population by compartment based on results from the maximum likelihood run.  
177 Figure S11 (Supplementary Material) shows the estimated increasing profile of the rate of  
178 commencing treatment over time, with the increase beginning from around 1986, which coincides  
179 with the establishment of the Viet Nam NTP [20]. The modelled rate shows a steep inflection,  
180 accelerating most rapidly through the late 1990s, six years after the implementation of the DOTS  
181 strategy [20]. The median case detection proportion stabilized at around 0.6 from 2010 onwards,  
182 which can be interpreted as meaning that about 60% of incident cases were successfully detected  
183 and commenced treatment. Specifically, we estimated a 33% reduction in the rate of commencing  
184 treatment, during COVID-19, resulting in a 0.43-year (equivalent to 23 weeks) increase in the time  
185 to active TB onset to detection and treatment.

## 186 **2. Future projection**

### 187 **Long-term impacts of COVID-19 on TB incidence and TB deaths**

188 Figure 4 illustrates how the COVID-19-related health system effects may contribute to impeding  
189 future TB control efforts under Assumption 2, in comparison with a counterfactual scenario that  
190 COVID-19 had no effect on TB notifications. In 2021, we estimated 1,900 additional TB episodes



191 (95% CrI: 200 – 5,100) and 1100 additional TB deaths associated with the effects of COVID-19  
192 (95% CrI: 100 – 2,700). By 2035, the cumulative annual burden could rise 22,000 more TB  
193 episodes (95% CrI: 1,900 – 63,000) and 5,900 more deaths (95% CrI: 600 – 16,600).

194 In 2024, we estimated the average delay to diagnosing and treating an active TB case at 1.80 years,  
195 such that our scenarios are equivalent to reducing the delay time to 0.9 years (approximately 47  
196 weeks) with a 2-fold increase, and to 0.36 years (approximately 19 weeks) with 5-fold in rate of  
197 commencing care. Our projections of the results of these scenarios are presented in Figure 5.  
198 Compared to a *'status quo'* projection, enhanced case detection by increasing the rate of  
199 commencing care 5-fold may prevent approximately 433,500 (95%CrI: 249,400 – 692,200) new TB  
200 episodes, representing a 17.8% reduction (95%CrI: 13.1% - 21.9%). Additionally, this scenario may  
201 avert 109,900 (95%CrI: 68,500 – 169,900) TB-related deaths, equivalent to 34.2% (95%CrI: 31.5%  
202 - 37.0%) of all TB-related deaths over the coming decade. Notably, enhancing TB case detection  
203 may have an even greater impact on reducing TB-related mortality.

## 204 **DISCUSSION**

205 Our results show that the decline in TB detection during COVID-19 was primarily responsible for the  
206 sharp drop in TB notifications in Viet Nam in 2021. This disruption has likely contributed to a  
207 backlog of undiagnosed cases, sustaining TB transmission and potentially leading to long-term  
208 increases in incidence and mortality. Our methodological approach, developed using open-source  
209 packages, supports data input manipulation, compartmental model construction, execution, and  
210 calibration, providing a flexible and efficient tool for developing, optimizing, and calibrating complex  
211 epidemiological models while promoting reproducibility and adaptability. [17].

212 The close alignment between the model-simulated indicators, including the population size, TB  
213 notifications and pulmonary TB prevalence demonstrates our model's capacity to capture multiple  
214 key observations reflecting TB burden. We found that COVID-19 was associated with significant  
215 reductions in TB case detection, which poses a serious threat to long-term TB control efforts, which

216 aligns with findings of other studies [20, 21]. However, Viet Nam has gained lessons from the  
217 COVID-19 pandemic to enhance TB case detection, focusing on decentralized services and  
218 proactive case-finding efforts. The "Double X" (2X) strategy, which utilizes chest radiography and  
219 GeneXpert rapid diagnostic testing, has improved early TB detection, particularly in vulnerable  
220 populations [5, 22, 23]. Continuing and expanding these programs may further strengthen TB  
221 surveillance, improve case detection rates, and mitigate long-term disruptions to TB control efforts.

222 The model configuration incorporating both reduced case detection and transmission reduction  
223 performed almost as well as that with reduced case detection only. However, the configuration that  
224 incorporated a reduction in case detection aligned most closely with observed trends, showing how  
225 COVID-19-related healthcare disruptions likely delayed diagnosis and treatment, leading to fewer  
226 reported cases. The detection process is obviously crucial for timely treatment commencement, and  
227 any disruption creates a backlog of undiagnosed cases, sustaining transmission within communities.

228 Under the assumption that COVID-19 reduced case detection, our model found a small increase in  
229 the relative importance of recent transmission to driving the epidemic during this period. Over time,  
230 this accumulated backlog continues to exacerbate transmission as more cases remain undetected.

231 Thus, while we cannot exclude that contact reduction due to COVID-19 measures like social  
232 distancing and lockdowns had a small impact on transmission, the steep decline in case detection  
233 likely played the predominant role in influencing TB notification numbers during the pandemic  
234 period. The wide credible intervals for the additional future TB cases and deaths likely reflect the  
235 uncertainty in estimating the impact of COVID-19, the compounding effects of increased  
236 transmission over time and the general uncertainty associated with our long-term projections

237 Nevertheless, the possibility of a major adverse effect on the epidemic emphasizes the importance  
238 of restoring and strengthening TB case detection efforts to mitigate the pandemic's lasting impact  
239 on TB control. This proactive approach not only manages the immediate effects of disruptions like  
240 those experienced during COVID-19 but also reduces long-term disease burden, saving more lives  
241 by ensuring that fewer cases go unnoticed and untreated. However, achieving this requires

242 substantial efforts, increased investment, and strong commitment. Any major disruption now or into  
243 the future - whether due to another pandemic, other public health crises - could further exacerbate  
244 TB control challenges.

245 The modelled delay from active TB to diagnosis and treatment can be interpreted as being  
246 exponentially distributed with an average time to diagnosis of approximately 1.80 years, implying  
247 that many cases remain undetected. This delay may appear higher than prior studies which  
248 reported median diagnostic delays of 28 days in low- and lower-middle-income countries and 10  
249 days in upper-middle-income countries [24]. In high-endemic areas, delays often exceeded 120  
250 days, influenced by gender, rural residence, and health system inefficiencies [24, 25]. Variation in  
251 the definition of first healthcare-seeking behavior further complicates comparisons, with definitions  
252 ranging from visits to qualified providers to any contact with the NTP [24]. Additionally,  
253 asymptomatic TB constitutes a substantial proportion of cases, with 27.7 – 82.7% depending on  
254 symptom criteria [26, 27]. Similar prevalence is reported in subgroups like children and people with  
255 diabetes [28].

256 Our study has limitations stemming from uncertainties in TB epidemiology and natural history. While  
257 recent research provides estimates for progression rates from LTBI to active TB, LTBI reactivation  
258 remains difficult to observe [29, 30], and we relied on several estimates from low-burden settings or  
259 from pre-chemotherapy era, that may not be fully applicable to the context of Viet Nam. The  
260 difficulty in conducting longitudinal studies in high-burden areas further complicates the precision of  
261 these estimates, potentially affecting the generalizability of our findings [31]. Despite this, these  
262 estimates aligned well with observed data, offering a more accurate foundation than broad  
263 assumptions like a 5 - 10% lifetime risk [30]. Uncertainties in input parameters likely contributed to  
264 the wide range of future projections. Although we assumed that the average delay in diagnosis and  
265 treatment start would not change over the next ten years in our "status-quo" scenario, future NTP  
266 capacity expansion may reduce this delay and increase the case detection rate. Furthermore, our  
267 model implemented a synthetic social contact matrix from 2007, and an updated matrix would more

268 accurately reflect current transmission dynamics, considering changes in social behavior, contact  
269 patterns, and demographics. While important, addressing drug-resistant (DR)-TB was beyond the  
270 scope of this study.

271 The major community-wide active case finding trial in Ca Mau province [32] provides opportunities  
272 for better understanding TB epidemiology in Vietnam and our modelling analysis can be considered  
273 in this context. The significant prevalence reduction observed during the trial period may suggest  
274 early progression may contribute more to TB cases than late reactivation, compared to our model  
275 estimates. However, we emphasize that our calibration process incorporated multiple  
276 epidemiological indicators, and our latency parameters - specifically early progression and late  
277 reactivation - were empirically derived, although all such estimates have their limitations.  
278 Additionally, we varied our latency parameters to some extent during calibration, and our  
279 supplementary materials indicate that early progression accounts for more than half of all cases in  
280 our model. While this discrepancy warrants further investigation, it presents a key opportunity for  
281 future research to refine our understanding of TB dynamics. Given the robustness of ACT3 as an  
282 epidemiological study, reconciling these differences could enhance the accuracy and applicability of  
283 our model to Viet Nam's TB landscape.

284 Our study's strengths include our optimization and calibration approach, which harnessed state-of-  
285 the-art publicly available software tools and successfully captured key indicators of the epidemic  
286 while also reflecting uncertainty around key input parameters. The model was informed by multiple  
287 relevant data streams, including results from the recent TB national survey. This allowed us to  
288 replicate the local TB burden and ensure that historical trends in case detection were properly  
289 reflected through TB notification data. Our pipeline, which was also applied to COVID-19 [17], can  
290 simulate a broad range of directly transmitted pathogens, and so is particularly applicable to TB.  
291 Combining domain-specific syntax with other libraries from the data science ecosystem, our  
292 framework ensures accuracy, transparency, and efficiency while supporting detailed calibration and  
293 uncertainty analysis.

294 **CONCLUSIONS**

295 Our study underscores the significant impact of COVID-19-related disruptions on TB case detection  
296 in Vietnam, leading to a backlog of undiagnosed cases that could sustain transmission for years.  
297 However, these impacts may be mitigated by enhancing case detection activities, which can  
298 improve early detection and reduce transmission risks. Any major disruption now or into the future -  
299 whether due to another pandemic, other public health crises - could further exacerbate TB control  
300 challenges. Addressing these risks requires sustained investment in diagnostic capacity, healthcare  
301 system resilience, and proactive policies to mitigate the long-term consequences of such  
302 disruptions on TB control.

303

304

305

306

307

308

309

310

311

312

313

314 **DECLARATIONS**

315 **Ethics approval and consent to participate:** Not applicable, as this study involves modeling and  
316 does not include human participants or identifiable data.

317 **Availability of data and materials:** The data supporting this article and the code used for the  
318 analyses are accessible in a GitHub repository at: <https://github.com/vlbui/tbdynamics>.

319 **Competing interests:** The authors declare that they have no competing interests.

## 320 **Author Contributions**

321 **Viet Long Bui:** Conceptualization, Methodology, Software, Data Curation, Formal analysis, Writing-  
322 Original draft preparation; Software; Writing- Reviewing and Editing; **Romain Ragonnet:**  
323 Conceptualization, Methodology, Software, Validation, Formal analysis, Writing- Reviewing and  
324 Editing; **Angus E. Hughes:** Methodology, Writing- Reviewing and Editing; **David S. Shipman:**  
325 Software; **Emma S. McBryde:** Writing- Reviewing and Editing; **Binh Hoa Nguyen :** Writing-  
326 Reviewing and Editing; **Hoang Nam Do:** Writing- Reviewing and Editing; **Thai Son Ha:** Writing-  
327 Reviewing and Editing; **Greg J. Fox:** Conceptualization, Data Curation, Methodology, Writing-  
328 Reviewing and Editing; **James M. Trauer:** Conceptualization, Methodology, Software, Validation,  
329 Formal analysis, Writing- Reviewing and Editing, Supervision.

330 **Acknowledgements:** Viet Long Bui is a recipient of a postgraduate scholarship from Monash  
331 University. James M. Trauer is the recipient of a Discovery Early Career Fellowship from the  
332 Australian Research Council (DE230100730). The funders had no role in study design, data  
333 collection and analysis, decision to publish, or preparation of the manuscript.

334 **Corresponding author:** Viet Long Bui, School of Public Health and Preventive Medicine, Monash  
335 University, Melbourne, VIC, Australia. email [viet.bui1@monash.edu](mailto:viet.bui1@monash.edu)

336

## 337 **REFERENCES**

- 338 1. World Health Organization. Global Tuberculosis Report 2024. Geneva.
- 339 2. Dheda K, Perumal T, Moultrie H, Perumal R, Esmail A, Scott AJ, et al. The intersecting  
340 pandemics of tuberculosis and COVID-19: population-level and patient-level impact, clinical  
341 presentation, and corrective interventions. *Lancet Respir Med.* 2022;10:603–22.
- 342 3. Villiers AK de, Osman M, Struchiner CJ, Trajman A, Tumu D, Shah VV, et al. Tuberculosis  
343 healthcare service disruptions during the COVID-19 pandemic in Brazil, India and South Africa: A  
344 model-based analysis of country-level data. *PLOS Glob Public Health.* 2025;5:e0003309.
- 345 4. Surendra H, Elyazar IRF, Puspaningrum E, Darmawan D, Pakasi TT, Lukitosari E, et al. Impact of  
346 the COVID-19 pandemic on tuberculosis control in Indonesia: a nationwide longitudinal analysis of  
347 programme data. *Lancet Glob Health.* 2023;11:e1412–21.
- 348 5. Hasan T, Nguyen VN, Nguyen HB, Nguyen TA, Le HTT, Pham CD, et al. Retrospective Cohort  
349 Study of Effects of the COVID-19 Pandemic on Tuberculosis Notifications, Vietnam, 2020. *Emerg  
350 Infect Dis.* 2022;28:684–92.
- 351 6. World Health Organization. Global Tuberculosis Report 2021. Geneva.
- 352 7. Methods used by WHO to estimate the global burden of TB disease.  
353 [https://www.who.int/publications/m/item/methods-used-by-who-to-estimate-the-global-burden-of-tb-](https://www.who.int/publications/m/item/methods-used-by-who-to-estimate-the-global-burden-of-tb-disease-2022)  
354 [disease-2022](https://www.who.int/publications/m/item/methods-used-by-who-to-estimate-the-global-burden-of-tb-disease-2022). Accessed 7 Feb 2025.
- 355 8. Ragonnet R, Williams BM, Largen A, Nasa J Jr, Jack T, Langinlur MK, et al. Estimating the long-  
356 term effects of mass screening for latent and active tuberculosis in the Marshall Islands. *Int J  
357 Epidemiol.* 2022;:dyac045.
- 358 9. Horby P, Thai PQ, Hens N, Yen NTT, Mai LQ, Thoang DD, et al. Social Contact Patterns in  
359 Vietnam and Implications for the Control of Infectious Diseases. *PLOS ONE.* 2011;6:e16965.

- 360 10. Completed results of the 2019 Viet Nam population and housing census – General Statistics  
361 Office of Vietnam. [https://www.gso.gov.vn/en/data-and-statistics/2020/11/completed-results-of-the-](https://www.gso.gov.vn/en/data-and-statistics/2020/11/completed-results-of-the-2019-viet-nam-population-and-housing-census/)  
362 [2019-viet-nam-population-and-housing-census/](https://www.gso.gov.vn/en/data-and-statistics/2020/11/completed-results-of-the-2019-viet-nam-population-and-housing-census/). Accessed 30 May 2024.
- 363 11. TB profile.  
364 [https://worldhealthorg.shinyapps.io/tb\\_profiles/?\\_inputs\\_&entity\\_type=%22country%22&iso2=%22AF%22&lan=%22EN%22](https://worldhealthorg.shinyapps.io/tb_profiles/?_inputs_&entity_type=%22country%22&iso2=%22AF%22&lan=%22EN%22). Accessed 30 May 2024.
- 366 12. Nguyen HV, Tiemersma EW, Nguyen HB, Cobelens FGJ, Finlay A, Glaziou P, et al. The second  
367 national tuberculosis prevalence survey in Vietnam. PLOS ONE. 2020;15:e0232142.
- 368 13. Vehtari A, Gelman A, Gabry J. Practical Bayesian model evaluation using leave-one-out cross-  
369 validation and WAIC. Stat Comput. 2017;27:1413–32.
- 370 14. Summer documentation — Summer2 documentation. <https://summer2.readthedocs.io/en/latest/>.  
371 Accessed 4 Jun 2024.
- 372 15. Bennet P, Doerr C, Moreau A, Rapin J, Teytaud F, Teytaud O. Nevergrad: black-box optimization  
373 platform. SIGEVolution. 2021;14:8–15.
- 374 16. DEMetropolis(Z) Sampler Tuning. PyMC.  
375 [https://www.pymc.io/projects/examples/samplers/DEMetropolisZ\\_tune\\_drop\\_fraction.html](https://www.pymc.io/projects/examples/samplers/DEMetropolisZ_tune_drop_fraction.html).  
376 Accessed 6 Sep 2024.
- 377 17. Trauer JM, Hughes AE, Shipman DS, Meehan MT, Henderson AS, McBryde ES, et al. A Data  
378 Science Pipeline Applied to Australia’s 2022 COVID-19 Omicron Waves. Infect Dis Model. 2024.  
379 <https://doi.org/10.1016/j.idm.2024.08.005>.
- 380 18. Hoa NB, Sy DN, Nhung NV, Tiemersma EW, Borgdorff MW, Cobelens FG. National survey of  
381 tuberculosis prevalence in Viet Nam. Bull World Health Organ. 2010;88:273–80.



- 382 19. Ding C, Hu M, Guo W, Hu W, Li X, Wang S, et al. Prevalence trends of latent tuberculosis  
383 infection at the global, regional, and country levels from 1990–2019. *Int J Infect Dis.* 2022;122:46–  
384 62.
- 385 20. Kessel B, Heinsohn T, Ott JJ, Wolff J, Hassenstein MJ, Lange B. Impact of COVID-19 pandemic  
386 and anti-pandemic measures on tuberculosis, viral hepatitis, HIV/AIDS and malaria–A systematic  
387 review. *PLOS Glob Public Health.* 2023;3:e0001018.
- 388 21. Marco MH, Ahmedov S, Castro KG. The global impact of COVID-19 on tuberculosis: A thematic  
389 scoping review, 2020–2023. *PLOS Glob Public Health.* 2024;4:e0003043.
- 390 22. Innes AL, Lebrun V, Hoang GL, Martinez A, Dinh N, Nguyen TTH, et al. An Effective Health  
391 System Approach to End TB: Implementing the Double X Strategy in Vietnam. *Glob Health Sci*  
392 *Pract.* 2024;12:e2400024.
- 393 23. Dinh LV, Vo LNQ, Wiemers AMC, Nguyen HB, Vu HQ, Mo HTL, et al. Ensuring Continuity of  
394 Tuberculosis Care during Social Distancing through Integrated Active Case Finding at COVID-19  
395 Vaccination Events in Vietnam: A Cohort Study. *Trop Med Infect Dis.* 2024;9:26.
- 396 24. Storla DG, Yimer S, Bjune GA. A systematic review of delay in the diagnosis and treatment of  
397 tuberculosis. *BMC Public Health.* 2008;8:15.
- 398 25. Teo AKJ, Singh SR, Prem K, Hsu LY, Yi S. Duration and determinants of delayed tuberculosis  
399 diagnosis and treatment in high-burden countries: a mixed-methods systematic review and meta-  
400 analysis. *Respir Res.* 2021;22:251.
- 401 26. Stuck L, Klinkenberg E, Ali NA, Abukaraig EAB, Adusi-Poku Y, Wagaw ZA, et al. Prevalence of  
402 subclinical pulmonary tuberculosis in adults in community settings: an individual participant data  
403 meta-analysis. *Lancet Infect Dis.* 2024;24:726–36.

- 404 27. Frascella B, Richards AS, Sossen B, Emery JC, Odone A, Law I, et al. Subclinical Tuberculosis  
405 Disease—A Review and Analysis of Prevalence Surveys to Inform Definitions, Burden, Associations,  
406 and Screening Methodology. *Clin Infect Dis*. 2021;73:e830–41.
- 407 28. Teo AKJ, MacLean EL-H, Fox GJ. Subclinical tuberculosis: a meta-analysis of prevalence and  
408 scoping review of definitions, prevalence and clinical characteristics. *Eur Respir Rev*. 2024;33.
- 409 29. Assefa DG, Bedru A, Zeleke ED, Negash SE, Debela DT, Molla W, et al. Efficacy and safety of  
410 different regimens in the treatment of patients with latent tuberculosis infection: a systematic review  
411 and network meta-analysis of randomized controlled trials. *Arch Public Health*. 2023;81:82.
- 412 30. Dale KD, Karmakar M, Snow KJ, Menzies D, Trauer JM, Denholm JT. Quantifying the rates of  
413 late reactivation tuberculosis: a systematic review. *Lancet Infect Dis*. 2021;21:e303–17.
- 414 31. Mirzazadeh A, Kahn JG, Haddad MB, Hill AN, Marks SM, Readhead A, et al. State-level  
415 prevalence estimates of latent tuberculosis infection in the United States by medical risk factors,  
416 demographic characteristics and nativity. *PloS One*. 2021;16:e0249012.
- 417 32. Marks Guy B., Nguyen Nhung V., Nguyen Phuong T.B., Nguyen Thu-Anh, Nguyen Hoa B., Tran  
418 Khoa H., et al. Community-wide Screening for Tuberculosis in a High-Prevalence Setting. *N Engl J*  
419 *Med*. 2019;381:1347–57.

420

421

422

423

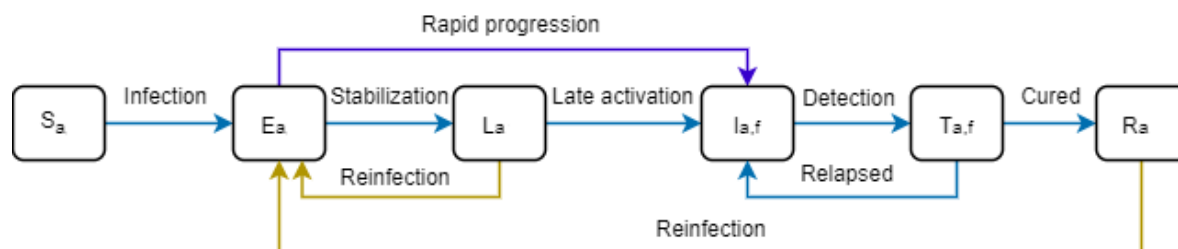
424

425

426

427

428



429

430 **Figure 1. Model structure.** Boxes represent different compartment types: Susceptible ( $S$ ),  
431 Early latent infection ( $E$ ), Late latent ( $L$ ), Active TB ( $I$ ), Treatment ( $T$ ) and Recovered ( $R$ ). Subscripts  
432 indicate stratification by age ( $a$ ) and pulmonary/smear status ( $f$ ).

433 **Alt text:** The image depicts a compartmental model structure used in epidemiology. It consists of  
434 several boxes representing different disease states, including Susceptible ( $S$ ), Early latent Infection  
435 ( $E$ ), Late latent ( $L$ ), Active TB ( $I$ ), Treatment ( $T$ ), and Recovered ( $R$ ). Each box is further stratified by  
436 age (indicated by subscript 'a') and pulmonary/smear status (indicated by subscript 'f'), illustrating  
437 the transitions and interactions between these different states in the model.

438

439

440

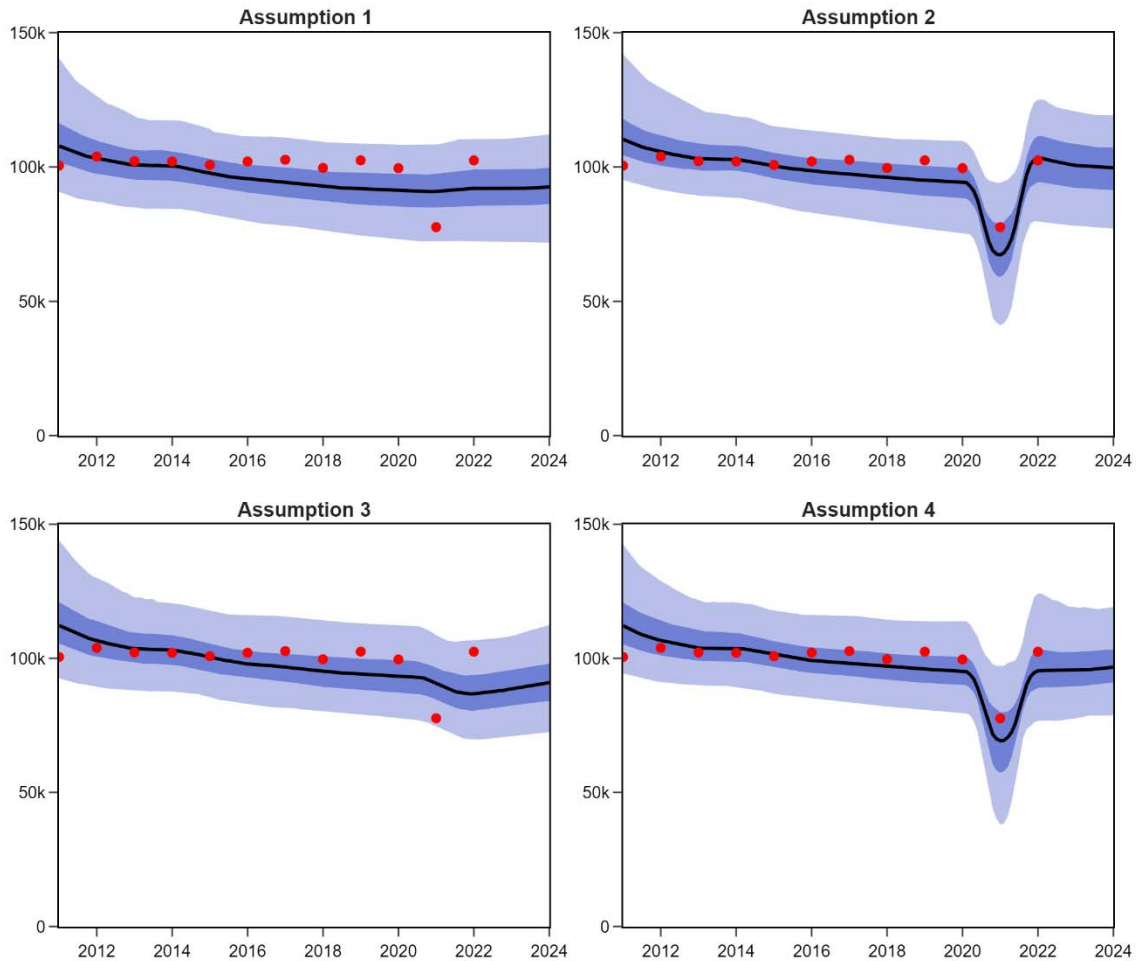
441

442

443

444

445



446

447

**Figure 2. Model fits to the historical profile of case notifications under our four candidate**

448

**assumptions regarding the effect of COVID-19 on *M.tb* dynamics. Solid lines represent median**

449

*model estimates. Shaded areas show corresponding interquartile ranges (dark shade) and 95%*

450

*credible intervals (light shade). **Assumption 1:** The COVID-19 pandemic had no impact on TB case*

451

*detection or transmission. **Assumption 2:** Only case detection was reduced. **Assumption 3:** Only*

452 *TB transmission was reduced. **Assumption 4:** Both case detection and TB transmission were*  
453 *reduced, incorporating effects from both social distancing and healthcare disruption.*

454 **Alt text:** Figure 2 shows the model's fit to historical case notifications under four different  
455 assumptions about COVID-19's impact on tuberculosis dynamics. The model's median estimates  
456 are shown by solid lines, while the 95% credible intervals and interquartile ranges are shown by  
457 shaded areas (dark and light, respectively). Assumption 1, neither TB case detection nor  
458 transmission was impacted by the COVID-19 pandemic; Assumption 2, only case detection was  
459 decreased; Assumption 3, only TB transmission was decreased; and Assumption 4, decreases in  
460 both case detection and TB transmission.

461

462

463

464

465

466

467

468

469

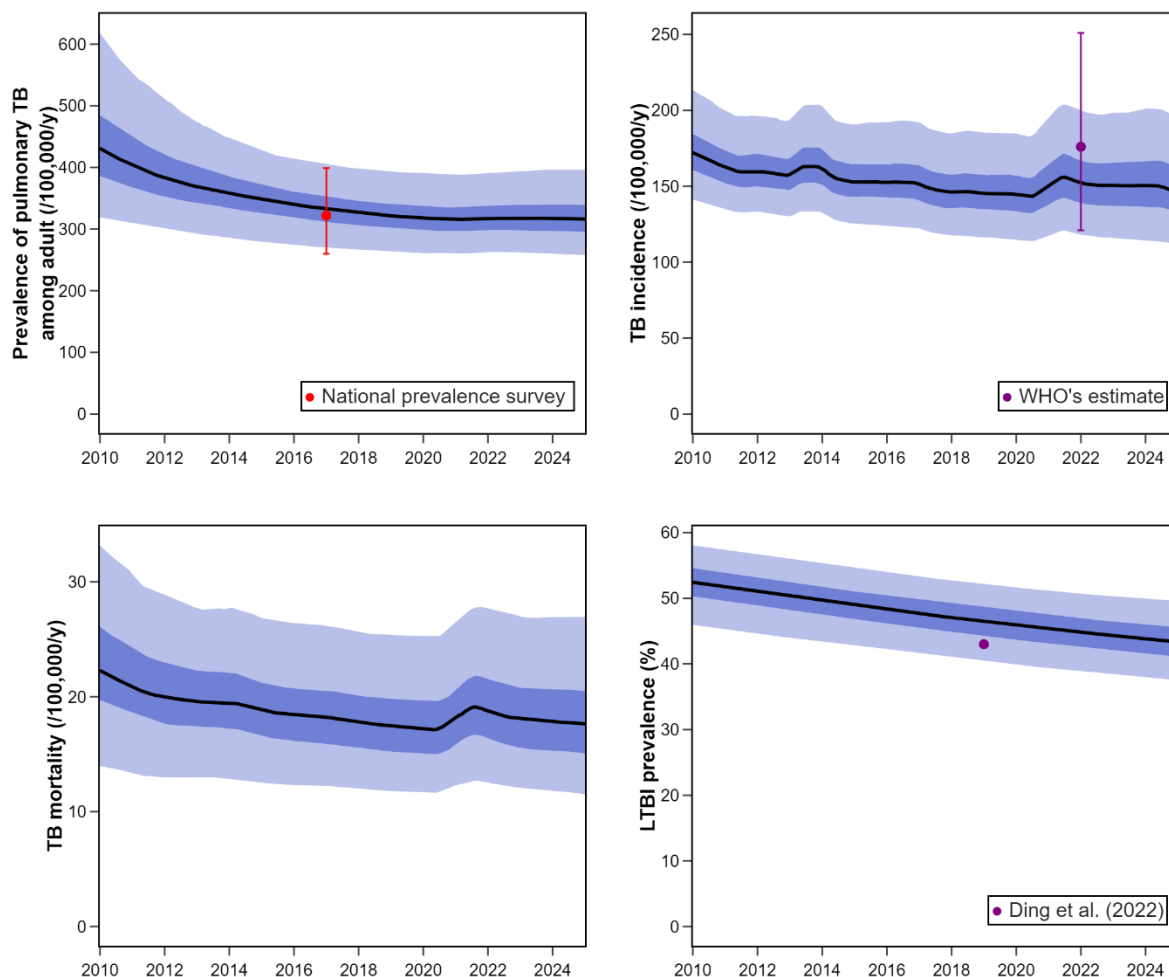
470

471

472

473

474



475

476 **Figure 3. Comparison between outputs and empiric observation targets other than annual**  
477 **case notifications for Viet Nam, under the best-fitting candidate model configuration**  
478 **(Assumption 2).** Model predictions are represented as median (solid line), interquartile credible  
479 interval (dark blue shade) and 95% central credible interval (light blue shade). Red points and  
480 vertical line (where available) show the point estimates and confidence interval for each calibration  
481 target, while purple points indicate estimates from literature that are presented for comparison but  
482 were not used as calibration targets. Legends indicate the data source for each target.  
483 **Alt text:** Figure 3 illustrates a comparison between model outputs and empirical observation targets

484 for Vietnam, excluding annual case notifications, under the best-fitting candidate model  
485 configuration (Assumption 2). The median is represented by a solid line, the interquartile credible  
486 interval by a dark blue line, and the 95% central credible interval (CrI) by a light blue line. Red  
487 points with vertical lines that, when available, display CrIs are used to indicate calibration targets.  
488 Estimates from the literature that are utilised for comparison but not as calibration objectives are  
489 shown by purple points. The legend provides specifics about each target's data source.

490

491

492

493

494

495

496

497

498

499

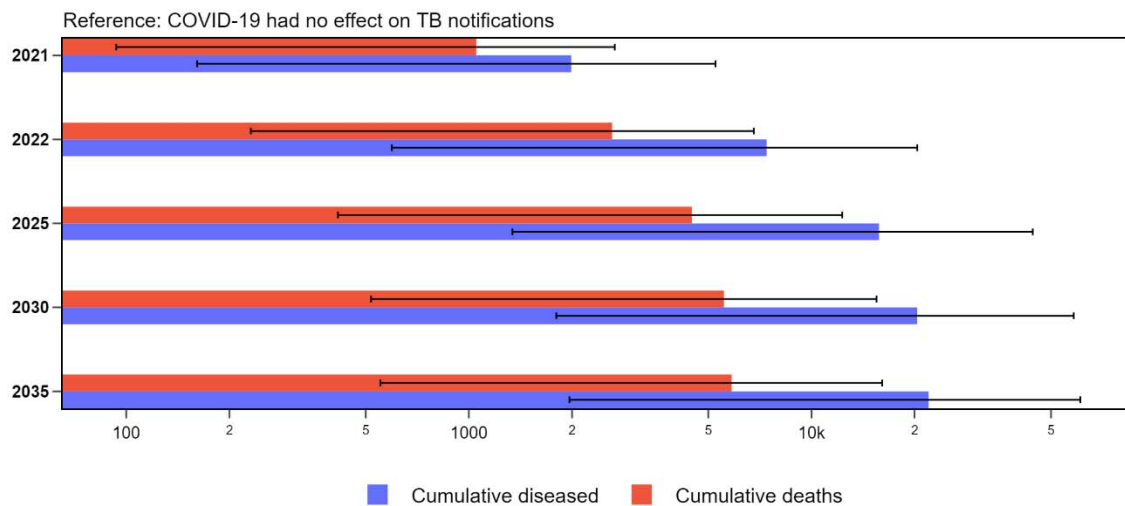
500

501

502

503

504



505

506 **Figure 4. Impact of the COVID-19 pandemic on the cumulative number of TB episodes and**  
507 **TB-related deaths from 2021 to 2035 compared to a counterfactual scenario that COVID-19**  
508 **had no effect on TB notifications.** *Projections made under Assumption 2, values are presented*  
509 *on a logarithmic scale. Cumulative diseased: cumulative new TB cases, Cumulative deaths:*  
510 *cumulative number of deaths due to TB. Lines indicate the 95% credible intervals of the estimates.*

511 **Alt text:** Figure 4 displays the impact of the COVID-19 pandemic on the cumulative number of  
512 tuberculosis (TB) episodes and TB-related deaths from 2021 to 2035, compared to a counterfactual  
513 scenario where COVID-19 had no effect on TB notifications. Assumption 2 is used to make the  
514 projections, and a logarithmic scale is used to display the data. The graph labels "Cumulative  
515 deaths" and "Cumulative diseased" denote the total number of TB-related deaths and cumulative  
516 new TB cases, respectively. The graph's lines show the estimations' 95% confidence intervals.

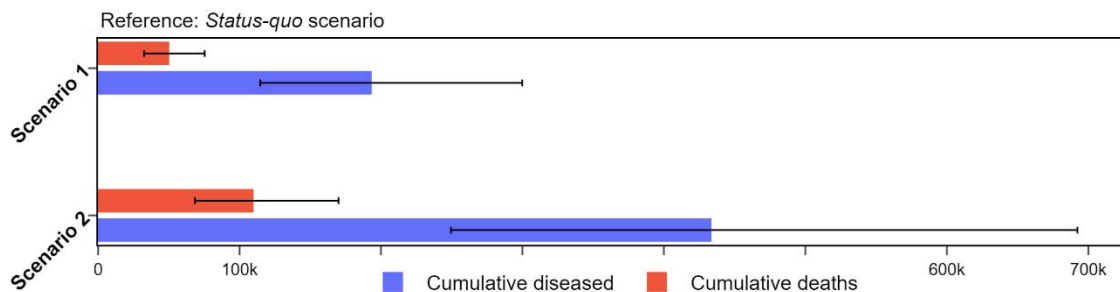
517

518

519

520





521

522 **Figure 5. Number of cumulative new TB episodes and TB-related deaths averted under two**  
523 **scenarios of enhancing case detection comparing to 'status quo scenario'. Projections made**  
524 *under Assumption 2, values are presented on a logarithmic scale. The 'status quo' scenario*  
525 *assumes case detection remains unchanged. Scenario 1 models a 2-fold increase and Scenario 2*  
526 *models a 5-fold increase in the rate at which persons with active TB commence care. Lines indicate*  
527 *the 95% credible intervals of the estimates.*

528 **Alt text:** The number of cumulative new TB episodes and TB-related deaths prevented under two  
529 scenarios that improve case detection in comparison to a "status quo scenario" is displayed in  
530 Figure 5. The results are displayed on a logarithmic scale, and the projections are made under  
531 Assumption 2. In the 'status quo' scenario, case detection is assumed to stay constant. The rate at  
532 which people with active TB start receiving care is predicted to increase by two times in Scenario 1  
533 and five times in Scenario 2. The graph's lines show the estimations' 95% confidence intervals.

534

535

536