

## SEGREGATION, POLLUTION, AND HIPPOCAMPUS

### **Associations between residential segregation, ambient air pollution, and hippocampal features in recent trauma survivors**

Sophia S. Liang BA<sup>1</sup>, Alyssa R. Roeckner BA<sup>2</sup>, Timothy D. Ely BA<sup>2</sup>, Lauren A M. Lebois PhD<sup>3,4</sup>, Sanne J H. van Rooij PhD<sup>2</sup>, Steven E. Bruce PhD<sup>5</sup>, Tanja Jovanovic PhD<sup>6</sup>, Stacey L. House MD, PhD<sup>7</sup>, Francesca L. Beaudoin MD, PhD<sup>8,9</sup>, Xinming An PhD<sup>10,11</sup>, Thomas C. Neylan MD<sup>12</sup>, Gari D. Clifford DPhil<sup>13,14</sup>, Sarah D. Linnstaedt PhD<sup>10,11</sup>, Laura T. Germine PhD<sup>15,16,4</sup>, Scott L. Rauch MD<sup>15,17,4</sup>, John P. Haran MD, PhD<sup>18</sup>, Alan B. Storrow MD<sup>19</sup>, Christopher Lewandowski MD<sup>20</sup>, Paul I. Musey Jr. MD<sup>21</sup>, Phyllis L. Hendry MD<sup>22</sup>, Sophia Sheikh MD<sup>22</sup>, Jose L. Pascual MD, PhD<sup>23,24</sup>, Mark J. Seamon MD<sup>25,24</sup>, Erica Harris MD<sup>26</sup>, Claire Pearson MD<sup>27</sup>, David A. Peak MD<sup>28,29</sup>, Roland C. Merchant MD, MPH, ScD<sup>30</sup>, Robert M. Domeier MD<sup>31</sup>, Niels K. Rathlev MD<sup>32</sup>, Brian J. O'Neil MD<sup>33</sup>, Paulina Sergot MD<sup>34</sup>, Leon D. Sanchez MD, MPH<sup>30,29</sup>, John F. Sheridan PhD<sup>35,36</sup>, Steven E. Harte PhD<sup>37,38</sup>, Ronald C. Kessler PhD<sup>39</sup>, Karestan C. Koenen PhD<sup>40</sup>, Samuel A. McLean MD, MPH<sup>41,10,42</sup>, Kerry J. Ressler MD, PhD<sup>3,4</sup>, Jennifer S. Stevens PhD<sup>2</sup>, E. Kate Webb PhD<sup>43,4</sup>, Nathaniel G. Harnett PhD<sup>3,4</sup>

\* Dr. Webb and Dr. Harnett should be considered joint senior authors.

#### **Affiliations:**

<sup>1</sup>Division of Depression and Anxiety, McLean Hospital, Belmont, MA, 02478, USA

<sup>2</sup>Department of Psychiatry and Behavioral Sciences, Emory University School of Medicine, Atlanta, GA, 30329, USA

<sup>3</sup>Division of Depression and Anxiety, McLean Hospital, Belmont, MA, 02478, USA

<sup>4</sup>Department of Psychiatry, Harvard Medical School, Boston, MA, 02115, USA

<sup>5</sup>Department of Psychological Sciences, University of Missouri - St. Louis, St. Louis, MO, 63121, USA

<sup>6</sup>Department of Psychiatry and Behavioral Neurosciences, Wayne State University, Detroit, MI, 48202, USA

<sup>7</sup>Department of Emergency Medicine, Washington University School of Medicine, St. Louis, MO, 63110, USA

<sup>8</sup>Department of Epidemiology, Brown University, Providence, RI, 02930, USA

<sup>9</sup>Department of Emergency Medicine, Brown University, Providence, RI, 02930, USA

<sup>10</sup>Institute for Trauma Recovery, University of North Carolina at Chapel Hill, Chapel Hill, NC,

## SEGREGATION, POLLUTION, AND HIPPOCAMPUS

27559, USA

<sup>11</sup>Department of Anesthesiology, University of North Carolina at Chapel Hill, Chapel Hill, NC, 27559, USA

<sup>12</sup>Departments of Psychiatry and Neurology, University of California San Francisco, San Francisco, CA, 94143, USA

<sup>13</sup>Department of Biomedical Informatics, Emory University School of Medicine, Atlanta, GA, 30332, USA

<sup>14</sup>Department of Biomedical Engineering, Georgia Institute of Technology and Emory University, Atlanta, GA, 30332, USA

<sup>15</sup>Institute for Technology in Psychiatry, McLean Hospital, Belmont, MA, 02478, USA

<sup>16</sup>The Many Brains Project, Belmont, MA, 02478, USA

<sup>17</sup>Department of Psychiatry, McLean Hospital, Belmont, MA, 02478, USA

<sup>18</sup>Department of Emergency Medicine, University of Massachusetts Chan Medical School, Worcester, MA, 01655, USA

<sup>19</sup>Department of Emergency Medicine, Vanderbilt University Medical Center, Nashville, TN, 37232, USA

<sup>20</sup>Department of Emergency Medicine, Henry Ford Health System, Detroit, MI, 48202, USA

<sup>21</sup>Department of Emergency Medicine, Indiana University School of Medicine, Indianapolis, IN, 46202, USA

<sup>22</sup>Department of Emergency Medicine, University of Florida College of Medicine -Jacksonville, Jacksonville, FL, 32209, USA

<sup>23</sup>Department of Surgery, Department of Neurosurgery, University of Pennsylvania, Philadelphia, PA, 19104, USA

<sup>24</sup>Perelman School of Medicine, University of Pennsylvania, Philadelphia, PA, 19104, USA

<sup>25</sup>Department of Surgery, Division of Traumatology, Surgical Critical Care and Emergency Surgery, University of Pennsylvania, Philadelphia, PA, 19104, USA

<sup>26</sup>Department of Emergency Medicine, Einstein Medical Center, Philadelphia, PA, 19107, USA

<sup>27</sup>Department of Emergency Medicine, Wayne State University, Ascension St. John Hospital, Detroit, MI, 48236, USA

<sup>28</sup>Department of Emergency Medicine, Massachusetts General Hospital, Boston, MA, 02114, USA

<sup>29</sup>Department of Emergency Medicine, Harvard Medical School, Boston, MA, 02115, USA

<sup>30</sup>Department of Emergency Medicine, Brigham and Women's Hospital, Boston, MA, 02115, USA

<sup>31</sup>Department of Emergency Medicine, Trinity Health-Ann Arbor, Ypsilanti, MI, 48197, USA

<sup>32</sup>Department of Emergency Medicine, University of Massachusetts Medical School-Baystate, Springfield, MA, 01107, USA

<sup>33</sup>Department of Emergency Medicine, Wayne State University, Detroit Receiving Hospital, Detroit, MI, 48202, USA

<sup>34</sup>Department of Emergency Medicine, McGovern Medical School at UTHealth, Houston, TX, 77030, USA

<sup>35</sup>Division of Biosciences, Ohio State University College of Dentistry, Columbus, OH, 43210, USA

<sup>36</sup>Institute for Behavioral Medicine Research, OSU Wexner Medical Center, Columbus, OH, 43211, USA

<sup>37</sup>Department of Anesthesiology, University of Michigan Medical School, Ann Arbor, MI,

## SEGREGATION, POLLUTION, AND HIPPOCAMPUS

48109, USA

<sup>38</sup>Department of Internal Medicine-Rheumatology, University of Michigan Medical School, Ann Arbor, MI, 48109, USA

<sup>39</sup>Department of Health Care Policy, Harvard Medical School, Boston, MA, 02115, USA

<sup>40</sup>Department of Epidemiology, Harvard T.H. Chan School of Public Health, Harvard University, Boston, MA, 02115, USA

<sup>41</sup>Department of Emergency Medicine, University of North Carolina at Chapel Hill, Chapel Hill, NC, 27559, USA

<sup>42</sup>Department of Psychiatry, University of North Carolina at Chapel Hill, Chapel Hill, NC, 27559, USA

<sup>43</sup>Division of Depression and Anxiety Disorders, McLean Hospital, Belmont, MA, 02478, USA

### **Corresponding Author:**

Nathaniel G. Harnett

Division of Depression and Anxiety

McLean Hospital, Mailstop 212

115 Mill St, Belmont MA 02478

[NHARNETT@MCLEAN.HARVARD.EDU](mailto:NHARNETT@MCLEAN.HARVARD.EDU)

**Keywords: Trauma, Hippocampus, Pollution, Segregation, Multimodal**

## SEGREGATION, POLLUTION, AND HIPPOCAMPUS

### Disclosures:

- Dr. Harnett received funding from the National Institute of Mental Health (K01MH129828) and the Brain Behavior Research Foundation.
- Dr. Lauren Lebois reports unpaid membership on the Scientific Committee for the International Society for the Study of Trauma and Dissociation (ISSTD), grant support from the National Institute of Mental Health (K01 MH118467), the Julia Kasparian Fund for Neuroscience Research, and the Trauma Scholars Fund. Dr. Lebois also reports spousal intellectual property payments from Vanderbilt University for technology licensed to Acadia Pharmaceuticals and spousal private equity in Violet Therapeutics, unrelated to the present work. Neither ISSTD nor NIMH was involved in the analysis or preparation of this manuscript.
- Dr. Jovanovic receives support from the National Institute of Mental Health, R01 MH129495.
- Dr. Neylan has received research support from NIH, VA, and Rainwater Charitable Foundation, and consulting income from Otsuka Pharmaceuticals.
- In the last three years Dr. Clifford has received research funding from the NSF, NIH and LifeBell AI, and unrestricted donations from AliveCor Inc, Amazon Research, the Center for Discovery, the Gates Foundation, Google, the Gordon and Betty Moore Foundation, MathWorks, Microsoft Research, Nextsense Inc, One Mind Foundation, and the Rett Research Foundation. Dr Clifford has financial interest in AliveCor Inc and Nextsense Inc. He also is the CTO of MindChild Medical with significant stock. These relationships are unconnected to the current work.
- Dr. Germine receives funding from the National Institute of Mental Health (R01 MH121617) and is on the board of the Many Brains Project. Her family also has equity in Intelrad Medical Systems, Inc.
- Dr. Rauch reported serving as secretary of the Society of Biological Psychiatry; serving as a board member of Community Psychiatry and Mindpath Health; serving as a board member of National Association of Behavioral Healthcare; serving as secretary and a board member for the Anxiety and Depression Association of America; serving as a board member of the National Network of Depression Centers; receiving royalties from Oxford University Press, American Psychiatric Publishing Inc, and Springer Publishing; and receiving personal fees from the Society of Biological Psychiatry, Community Psychiatry and Mindpath Health, and National Association of Behavioral Healthcare outside the submitted work.
- Dr. Pascual is president elect of the Society for Clinical Care Medicine.
- Dr. Harte has no competing interest related to this work, though in the last three years he has received research funding from Arbor Medical Innovations, and consulting payments from Memorial Sloan Kettering Cancer Center, Indiana University, The Ohio State University, Wayne State University, and Dana Farber Cancer Institute.
- In the past 3 years, Dr. Kessler was a consultant for Cambridge Health Alliance, Canandaigua VA Medical Center, Child Mind Institute, Holmusk, Massachusetts General Hospital, Partners Healthcare, Inc., RallyPoint Networks, Inc., Sage Therapeutics and University of North Carolina. He has stock options in Cerebral Inc., Mirah, PYM (Prepare Your Mind), Roga Sciences and Verisense Health.

## SEGREGATION, POLLUTION, AND HIPPOCAMPUS

- Dr. Koenen has done paid consulting for the US Department of Justice and Covington and Burling, LLP. She receives royalties from Oxford University Press and Guilford Press.
- Dr. McLean has served as a consultant for Walter Reed Army Institute for Research, Arbor Medical Innovations, and BioXcel Therapeutics, Inc.
- Dr. Ressler has performed scientific consultation for Bioxcel, Bionomics, Acer, and Jazz Pharma; serves on Scientific Advisory Boards for Sage, Boehringer Ingelheim, Senseye, and the Brain Research Foundation, and he has received sponsored research support from Alto Neuroscience.

## SEGREGATION, POLLUTION, AND HIPPOCAMPUS

**Acknowledgements:** The investigators wish to thank the trauma survivors participating in the AURORA Study. Their time and effort during a challenging period of their lives make our efforts to improve recovery for future trauma survivors possible. The AURORA study was supported by NIMH under U01MH110925, the US Army MRMC, One Mind, and The Mayday Fund. The DISENTANGLE study is a continuation of AURORA's work and is supported by the United States Army Medical Research Acquisition Activity (USAMRAA) under Contract No. W81XWH22C012. This project was supported by NIMH under F32MH134443 (Webb) and K01MH129828 (Harnett), Data used in this manuscript is available through the National Institute of Mental Health (NIMH) Data Archive (NDA). The NDA Collection for the AURORA Project can be found here: [https://nda.nih.gov/edit\\_collection.html?id=2526](https://nda.nih.gov/edit_collection.html?id=2526). This content is solely the responsibility of the authors and may not reflect the official view of any of the funders or the Submitters submitting original data to NDA.

## SEGREGATION, POLLUTION, AND HIPPOCAMPUS

### Abstract

**Background:** Residential segregation is associated with differential exposure to air pollution. Hippocampus structure and function are highly susceptible to pollutants and associated with posttraumatic stress disorder (PTSD) development. Therefore, we investigated associations between residential segregation, air pollutants, hippocampal neurobiology, and PTSD in recent trauma survivors.

**Methods:** Participants ( $N = 278$ ; 34% non-Hispanic white, 46% Non-Hispanic Black, 16% Hispanic) completed multimodal neuroimaging two weeks after trauma. Yearly averages of air pollutants ( $PM_{2.5}$  and  $NO_2$ ) and racial/economic segregation (Index of Concentration at the Extremes) were derived from each participant's address. Linear models assessed if air pollutants mediated associations between segregation and hippocampal volume, threat reactivity, or parahippocampal cingulum fractional anisotropy (FA) after covarying for age, sex, income, and 2-week PTSD symptoms. Further models evaluated if pollutants or segregation prospectively predicted PTSD symptoms six months post-trauma.

**Results:** Non-Hispanic Black participants lived in neighborhoods with significantly greater segregation and air pollution compared to Hispanic and non-Hispanic white participants ( $p < .001$ ). There was a significant indirect effect of  $NO_2$  between segregation and FA values ( $\beta = 0.08$ , 95% CI[0.01, 0.15]), and an indirect effect of  $PM_{2.5}$  between segregation and threat reactivity ( $\beta = -0.08$ , 95% CI[-0.14, -0.01]). There was no direct effect of segregation on hippocampal features. Pollutants and segregation were not associated with PTSD symptoms.

**Conclusion:** Residential segregation is associated with greater air pollution exposure, which is in turn associated with variability in hippocampal features among recent trauma

## SEGREGATION, POLLUTION, AND HIPPOCAMPUS

survivors. Further research is needed to assess relationships between other environmental factors and trauma and stress-related disorders.



## SEGREGATION, POLLUTION, AND HIPPOCAMPUS

### 1. INTRODUCTION

Among the 90% of Americans who will experience a traumatic event (TE) in their lifetimes, approximately 20% will subsequently develop posttraumatic stress disorder (PTSD).<sup>1,2</sup> Variability in posttraumatic neurobiological and mental health outcomes may be related to individual characteristics, but it may also be influenced by environmental factors, such as levels of ambient pollution or the socioeconomic composition of the neighborhoods in which people live.<sup>3-5</sup> Exposure to specific neighborhood environmental factors may modify neural circuits related to the development or expression of PTSD.<sup>6-8</sup>

One neighborhood characteristic implicated in the mental health literature is residential segregation, or the degree to which two or more sociodemographic groups live separately from each other.<sup>9</sup> In the United States, gentrification, migration, and discriminatory real estate practices have created neighborhoods segregated along economic and racial/ethnic lines.<sup>10</sup> Prior work suggests that residential segregation may be associated with differing outcomes following a TE. For example, Ahern and Galea found that six months after the September 11, 2001 terrorist attacks, neighborhood-level socioeconomic inequality was associated with depression among low-income (but not high-income) New York residents.<sup>11</sup> A study of recent trauma survivors found that greater neighborhood racial and economic segregation predicted greater PTSD symptom severity.<sup>12</sup> Further, several studies show that trauma-naïve individuals living in areas with greater racial and/or economic segregation report higher levels of stress, depression, and anxiety compared to individuals living in less segregated areas.<sup>13-19</sup> For example, a large-scale, nationally representative survey revealed that higher Black-white metropolitan segregation was associated with higher odds of psychological distress for Black Americans beyond those

## SEGREGATION, POLLUTION, AND HIPPOCAMPUS

associated with neighborhood poverty alone.<sup>14</sup> Therefore, neighborhood segregation may be an important factor related to PTSD risk and development.

The mechanisms by which residential segregation affects posttraumatic outcomes remain unknown and are likely multifaceted, but one potential pathway may be through differential exposure to air pollution. Observational data indicate that PTSD, depression, and anxiety are more prevalent in areas with higher concentrations of air pollutants.<sup>20-25</sup> Moreover, research suggests lower-income and/or ethnoracially minoritized residents disproportionately reside in neighborhoods with higher levels of hazardous air pollution caused in part by closer proximity to high-traffic routes and polluting industries.<sup>26-29</sup> Exposure to two of the most common air pollutants, fine particulate matter smaller than 2.5 micrometers (PM<sub>2.5</sub>) and nitrogen dioxide (NO<sub>2</sub>), is consistently higher in areas with greater residential segregation.<sup>27,28,30,31</sup> Both pollutants are products of biomass and fossil fuel combustion, particularly from automobiles, power plants, and industry,<sup>32</sup> and notably, they are both associated with alterations in brain regions implicated in stress-related disorders.<sup>23</sup>

PM<sub>2.5</sub> and NO<sub>2</sub> may enter the lungs, access the brain through the bloodstream, and elevate cytokines and reactive oxygen species.<sup>33</sup> The resultant neuroinflammatory reactions may damage the structure and function of regions involved in stress responding and emotion regulation, particularly the hippocampus.<sup>33</sup> Preclinical models demonstrate that air pollutants can impair neurogenesis and alter morphology (e.g., decreasing dendritic spine lengths) in the hippocampus, resulting in depressive-like symptoms.<sup>34-36</sup> A recent meta-analysis revealed higher levels of ambient exposure to PM<sub>2.5</sub> was significantly associated with decreased hippocampal volume.<sup>37</sup> Further, Dimitrov-Discher (2022) and colleagues found higher levels of PM<sub>2.5</sub>, but not NO<sub>2</sub>, were associated with lower hippocampal reactivity in response to a social stressor.<sup>38</sup> The emerging

## SEGREGATION, POLLUTION, AND HIPPOCAMPUS

evidence on the effects of air pollutants (reviewed in Zundel et al.<sup>23</sup>) suggests the hippocampal alterations are similar to those implicated in PTSD.<sup>39,40</sup> Altered hippocampal features associated with heightened risk for PTSD include decreased volume<sup>40-44</sup>, compromised white matter projections<sup>45-46</sup>, and lower reactivity to threat and trauma-related stimuli.<sup>47-50</sup> Interestingly, several studies observed lower hippocampal volumes in individuals residing in more segregated neighborhoods, which may be due to greater exposure to air pollutants;<sup>51-53</sup> however, no studies to date have investigated exposure to air pollutants as a potential mechanism by which an individual's place of residence impacts their neurobiological risk for PTSD.

The current study investigated if trauma survivors living in more segregated neighborhoods may be exposed to higher concentrations of air pollutants and whether differential exposure to air pollutants was related to individual variability in hippocampal structure and function. We combined data from the AURORA study, a national, longitudinal study of trauma outcomes, with publicly available measures of air pollution and residential segregation. We expected that ethnoracially minoritized trauma survivors would disproportionately reside in more segregated and polluted neighborhoods compared to non-Hispanic white participants and that greater economic and racial segregation would be associated with higher levels of PM<sub>2.5</sub> and NO<sub>2</sub>. We hypothesized that both PM<sub>2.5</sub> and NO<sub>2</sub> would be associated with smaller hippocampal volume, decreased white matter tract microstructure underlying the hippocampus, and lower hippocampal reactivity to threat. We further investigated whether air pollution or segregation were prospectively associated with PTSD symptoms in the six months post-trauma beyond the effects of the individual-level factors. We expected higher levels of air pollution and higher levels of segregation would be uniquely associated with more severe symptoms across time.

## SEGREGATION, POLLUTION, AND HIPPOCAMPUS

### 2. METHODS

#### Participants

Participants were recruited as part of the AURORA study, a large-scale, longitudinal, multimodal assessment of adverse posttraumatic outcomes.<sup>54</sup> The AURORA study recruited participants aged 18 to 75 from emergency departments (EDs) across the U.S. within 72 hours of experiencing a TE between September 2017 and June 2021. Qualifying TEs included motor vehicle collisions, physical assaults, sexual assaults, falls from heights greater than 10 feet, mass casualty incidents, or other events with approval of the research assistant (see<sup>54</sup> for the AURORA study's full inclusion and exclusion criteria). Written informed consent was obtained from all participants as approved by each site's institutional review board, and participants were financially compensated for their time.

A total of 342 participants completed the neuroimaging measures relevant to this study. Participants missing any individual characteristics were excluded (ethnoracial group  $n = 1$ , income  $n = 40$ , Week 2 PTSD symptoms  $n = 13$ ). In addition, participants who could not be successfully geocoded and were missing neighborhood data about air pollution, neighborhood disadvantage ( $n = 9$ ), or racial/economic segregation ( $n = 1$ ) were excluded. The final analytic sample consisted of 278 participants. See **Figure S1** for a flowchart of inclusion/exclusion.

#### Measures

*Demographics.* Sociodemographic data was collected in the ED (at the time of study enrollment) and at two weeks post-trauma. Participants provided their current home address, which was used for geocoding. In the ED, participants reported their sex assigned at birth (*male*

## SEGREGATION, POLLUTION, AND HIPPOCAMPUS

or *female*), age, education, and race and ethnicity (queried separately). The race and ethnicity responses were combined to create an ethnoracial group variable with the following categories: non-Hispanic white (“NH white”), non-Hispanic Black (“NH Black”), Hispanic, and non-Hispanic Other (“NH Other”). At the two-week study visit, participants gave an estimate of their annual household income before taxes on a semi-continuous scale ( $\leq \$19,000$ ,  $\$19,001$ – $\$35,000$ ,  $\$35,001$ – $\$50,000$ ,  $\$50,001$ – $\$75,000$ ,  $\$75,001$ – $\$100,000$ , or  $> \$100,000$ ).

### **Psychometric Assessments**

At two weeks, eight weeks, three months, and six months post-trauma, PTSD symptoms were assessed using the PTSD Checklist for DSM-5 (PCL-5). The two-week survey asked participants to assess the symptoms they experienced within the last two weeks, while the eight-week survey onwards asked participants to reference the past 30 days. Potential scores range from 0 to 80, where higher scores corresponded to more severe symptoms.<sup>55</sup> In addition, depression and anxiety symptoms were assessed using subsets of questions from the Patient-Reported Outcomes Measurement Information System (PROMIS).<sup>56</sup> The depression variables from Short Form 8b were converted into a T-score, where a score of 50 is the mean for the U.S. general population and a score of 60 or above (at least one standard deviation above the mean) indicates a suspect depression diagnosis. Anxiety symptoms were assessed using the PROMIS Anxiety Bank. Scores ranged from 0 to 16, where a higher score is indicative of more severe anxiety.

### **Neighborhood-level Factors**

*Residential Segregation.* Residential segregation was measured using the Index of Concentration at the Extremes (ICE), a metric developed by Massey, Booth and Crouter<sup>57</sup> and expanded upon by Krieger, Waterman, Gryparis and Coull<sup>26</sup>. The ICE measures the extent to

## SEGREGATION, POLLUTION, AND HIPPOCAMPUS

which the population in a certain area is concentrated into extremes of relative privilege and deprivation. The ICE ranges from -1 to +1, where -1 indicates that 100% of the population in an area is concentrated in the most deprived group, and +1 indicates that 100% of the population is concentrated in the most privileged group. The two groups may be defined along any socioeconomic axis, and a growing body of literature shows that the ICE is a reliable predictor of physical and mental health disparities among individuals segregated by income levels and ethnoracial categories.<sup>12,58-61</sup> Other scholars have also noted that a conceptual strength of the ICE, as opposed to more traditional metrics such as neighborhood poverty rate, is that it reflects the zero-sum relationship between privilege and deprivation — emphasizing the fact that certain groups have gained and maintained their advantages *at the expense of others*.<sup>62</sup>

Population, income, and race/ethnicity data for each zip code tabulation area in the U.S. were obtained from the U.S. Census Bureau's American Community Survey for 2016, the year before the AURORA study began recruitment. These data were used to compute various ICE metrics using code from Krieger et al (<https://www.hsph.harvard.edu/thegeocodingproject/covid-19-resources/>). For the present analyses, we used the combined ethnoracial and economic segregation measure (ICE<sub>raceinc</sub>; herein referred to as residential segregation), which defines the privileged group as NH white Americans at or above the 80<sup>th</sup> percentile of national family income and the deprived group as people of color at or below the 20<sup>th</sup> percentile of national family income.

*Air Pollutants.* Air pollution measures included the estimated annual concentrations of PM<sub>2.5</sub> and NO<sub>2</sub> for each zip code in the U.S.<sup>63</sup> The estimations reflect the ensemble predictions of several machine-learning models using data from air monitoring, satellites, meteorological conditions, chemical transport models, and land-use variables. These estimates have high

## SEGREGATION, POLLUTION, AND HIPPOCAMPUS

predictive performance and have been widely used to study the effects of air pollutants on population health.<sup>64</sup> The present study used the PM<sub>2.5</sub> and NO<sub>2</sub> measures from 2016.

*Neighborhood Socioeconomic Disadvantage.* Several previous studies using the AURORA data have quantified neighborhood advantage/disadvantage using the Area Deprivation Index (ADI), a weighted-composite measure of income, education, employment, and housing quality.<sup>7,65</sup> Therefore, as a secondary analysis, we replaced the ICERaceinc with ADI rankings in statistical tests to determine if our results were specific to segregation. We used the 2019 ADI, based on data from the 2015-2019 censuses. The ADI of each census block group is ranked against all other block groups nationwide and converted into a percentile (1–100), such that a national ADI ranking of 100 would indicate that a block group was the most socioeconomically disadvantaged of all block groups in the U.S.

### **MRI Data Acquisition and Analysis**

The AURORA study collected MRI data at two weeks post-trauma at five sites nationwide with largely harmonized acquisition protocols; site-specific sequences are provided in Supplemental Table S1.<sup>66,67</sup> Structural, diffusion weighted, and functional images were visually inspected and underwent quality checks in MRI-QC.<sup>68</sup> Additional information about the MRI quality control metrics considered for each modality is reported in the Supplemental Material.

*Structural MRI.* T1-weighted MRI data were analyzed using Freesurfer as part of fMRIPrep.<sup>66</sup> Each individual's hippocampal volume was standardized as a proportion of their total intracranial volume.

*Diffusion Tensor Imaging (DTI).* White matter microstructure was assessed using DTI and processed according to the recommendations of the ENIGMA consortium, as described in

## SEGREGATION, POLLUTION, AND HIPPOCAMPUS

prior work.<sup>66</sup> Standard ENIGMA skeletal maps of fractional anisotropy (FA) were first projected on each participant's FA maps before extracting FA values from the Johns Hopkins University white matter atlas. The tract of interest in this study was the parahippocampal part of the cingulum.

*Task-fMRI.* As reported elsewhere<sup>66</sup>, participants completed a task viewing fearful and neutral facial expressions while undergoing fMRI. In each 8 s block, participants viewed 8 different faces (presented for 500 ms with a 500 ms interstimulus interval) depicting either fear or neutral expressions. In all, the task consisted of 15 fearful and 15 neutral blocks presented in a pseudorandom order, counterbalanced across participants. As described elsewhere, data were preprocessed in fMRIPrep, and 1<sup>st</sup>-level models were conducted in SPM12. Separate boxcar functions were used to represent each block, convolved with a canonical hemodynamic response function, and separate regressors for white matter, cerebrospinal fluid, and global signal were included to account for any remaining noise. The current analysis examined hippocampus reactivity to *fearful > neutral* faces.

### **Analytic Strategy**

We completed Pearson's correlation analyses to examine associations between the individual, neighborhood, air pollution, and hippocampal continuous variables. One-way ANOVAs examined ethnoracial group differences in income and education, ICERaceinc, ADI, PM<sub>2.5</sub>, NO<sub>2</sub>, hippocampal volume, CGH FA values, and hippocampal threat reactivity respectively. A mediation analysis was conducted in R (*process* package, Model 4<sup>69</sup>) with bias-corrected bootstrapping (20,000 resamples) to examine the relationship between residential segregation on each of the neurobiological measures of the hippocampus (volume, CGH FA, threat reactivity) via an association with air pollution (PM<sub>2.5</sub> or NO<sub>2</sub> concentrations). In line with



## SEGREGATION, POLLUTION, AND HIPPOCAMPUS

prior work,<sup>37</sup> to isolate the relative importance of neighborhood-level factors on hippocampal features from the effects of individual-level sociodemographic and trauma-related factors, individual sex, age, income, and Week 2 PTSD symptoms were included as covariates. Due to collinearity between neighborhood characteristics and neuroimaging site, site was not included as a covariate in these analyses. Ninety-five percent confidence intervals were estimated for all these effects; intervals that excluded the value 0 were considered statistically significant. A secondary analysis examined whether associations held when using ADI as the independent variable instead of ICERaceinc (see Supplemental Material). Finally, to examine whether segregation or air pollution predicted PTSD development over time, we conducted a linear mixed effects model analyzing the effects of ICERaceinc, NO<sub>2</sub>, and PM<sub>2.5</sub> on PTSD symptoms across all four timepoints, after adjusting for sex, age, and income. As an exploratory aim, analyses of highly comorbid depression and anxiety symptoms were conducted, and results are provided in (see Supplemental Material).

### 3. RESULTS

#### Sample Characteristics and Associations Between Study Measures

Of the 278 participants, the majority had an annual household income of under \$35,000, and a plurality identified as NH Black (46%). Over two-thirds of participants experienced a motor vehicle collision. See **Table 1** for a breakdown of participant demographics.

There was a significant main effect of ethnoracial group on residential segregation ( $F(3, 274) = 39.4, p < .001$ ), exposure to PM<sub>2.5</sub> ( $F(3, 274) = 17.3, p < .001$ ), and exposure to NO<sub>2</sub> ( $F(3, 274) = 7.29, p < .001$ ) (**Figure 1**). Tukey post hoc tests revealed these effects were largely driven by NH Black participants, who lived in more segregated and disadvantaged neighborhoods (a

## SEGREGATION, POLLUTION, AND HIPPOCAMPUS

more negative ICERaceinc) compared to Hispanic (difference in means = -0.21;  $t(274) = 4.30$ ,  $p < .001$ ), NH white (diff = -0.41;  $t(274) = 10.79$ ,  $p < .001$ ), and NH Other (diff = -0.28;  $t(274) = -3.12$ ,  $p = .011$ ) participants,  $ps < .001$ . Hispanic participants lived in more segregated and disadvantaged neighborhoods compared to NH white participants (diff = -0.20;  $p < .001$ ;  $t(274) = -3.97$ ,  $p = .001$ ). NH Black participants were exposed to higher concentrations of PM<sub>2.5</sub> compared to Hispanic (diff = 1.21;  $t(274) = 4.30$ ,  $p < .001$ ), NH white (diff = 1.14;  $t(274) = -6.28$ ,  $p < .001$ ), and NH Other participants (diff = 1.14;  $t(274) = 2.69$ ,  $p = .038$ ), as well as higher concentrations of NO<sub>2</sub> compared to NH white participants (diff = 2.25;  $p < .05$ ;  $t(274) = -4.35$ ,  $p < .001$ ).

Scatter plots showing the relationships of air pollution concentration with bilateral hippocampus volume, white matter tract FA, and threat reactivity are depicted in **Figure 2**. PM<sub>2.5</sub> concentration was positively correlated with threat reactivity ( $r(276) = 0.16$ ,  $p < .006$ ). NO<sub>2</sub> concentration was positively correlated with hippocampus volume ( $r(276) = 0.17$ ,  $p < .005$ ) and negatively correlated with white matter tract FA ( $r(276) = -0.18$ ,  $p < .003$ ).

### **Residential Segregation, Air Pollution, and Hippocampal Features**

A mediation model revealed that there was a significant indirect association between segregation, NO<sub>2</sub> exposure, and FA of the CGH (a\*b path:  $\beta = .008$ , CI [0.01, 0.15], SE $\beta = .004$ ; **Figure 3A**) covarying for sex, age, income, and Week 2 PCL-5 scores. Greater segregation was associated with greater NO<sub>2</sub> exposure, which in turn was associated with lower FA values of the CGH. There was no significant direct association between segregation and the CGH (c' path:  $\beta = .001$ , CI [-0.01, 0.02], SE $\beta = 0.01$ ).

There was a significant indirect association between segregation, PM<sub>2.5</sub> exposure, and threat reactivity (a\*b path:  $\beta = -.008$ , CI [-0.14, -0.01], SE $\beta = .003$ ; **Figure 3B**); greater

## SEGREGATION, POLLUTION, AND HIPPOCAMPUS

segregation was associated with greater PM<sub>2.5</sub> exposure, which in turn was associated with increased threat reactivity. There was no significant direct association between segregation and threat reactivity (c' path:  $\beta = 0.01$ , CI [-0.05, 0.07], SE = 0.03). When ICERaceinc was replaced with ADI, there were no significant associations between ADI and threat reactivity, but there was an indirect association between ADI, NO<sub>2</sub>, and volume, as well as ADI, NO<sub>2</sub>, and FA of the CGH (see Supplemental Material).

### **Residential Segregation, Air Pollution, and PTSD Symptoms**

There was no significant association between residential segregation and PTSD symptoms ( $\beta = 0.01$ ,  $p > .05$ ; **Table 2**) after covarying for sex, age, and income. Further, there was no significant association between either PM<sub>2.5</sub> ( $\beta = -0.01$ ,  $p > .05$ ) or NO<sub>2</sub> ( $\beta = -0.06$ ,  $p > .05$ ) on PTSD symptoms across the four timepoints (**Table 2**). Follow-up exploratory models of depression and anxiety similarly did not reveal associations between symptoms and residential segregation (**Tables S2 and S3**).

## 4. DISCUSSION

The present study explored a potential pathway by which social and spatial inequities may be associated with posttraumatic neurobiology. We found significant associations among residential segregation, air pollution, and hippocampal features in recent trauma survivors across the United States even after accounting for important individual-level factors. Higher residential segregation was associated with higher levels of NO<sub>2</sub> and PM<sub>2.5</sub>, to which NH Black participants were disproportionately exposed. Further, higher levels of air pollution were associated with decreased white matter tract integrity and increased threat reactivity in the hippocampus. Our findings suggest that individuals' environments may impact hippocampal neurobiology in trauma

## SEGREGATION, POLLUTION, AND HIPPOCAMPUS

survivors and replicate well-documented economic and ethnoracial inequities in air pollution exposure.<sup>70,71</sup>

Our results align with previous preclinical and human work suggesting air pollutants are associated with altered neurobiological features.<sup>23,72</sup> The majority of prior work has focused on the hippocampus and PM<sub>2.5</sub>,<sup>23</sup> with relatively few studies characterizing the unique effects of multiple pollutants, partly due to the complexities of disentangling pollutant mixtures and the high collinearity between pollutant types<sup>23</sup>. In the present study, we found that higher levels of NO<sub>2</sub> were associated with lower FA values of the CGH, a tract that facilitates communication between the hippocampus and prefrontal regions, whereas higher levels of PM<sub>2.5</sub> were associated with greater hippocampal reactivity to threat. Several studies have documented NO<sub>2</sub> and PM<sub>2.5</sub> are associated with reduced microstructural integrity, with the majority showing childhood exposure is associated with lower global fractional anisotropy later in life.<sup>73-75</sup> Relatively few human studies have examined associations between air pollutants and threat or stress reactivity. Interestingly, Dimitrov-Discher (2022) and colleagues found higher levels of PM<sub>2.5</sub>, but not NO<sub>2</sub>, were associated with *lower* hippocampal responses to a social stressor. However, Miller and colleagues (2019) demonstrated that adolescents exposed to higher levels of PM<sub>2.5</sub> showed greater psychophysiological reactivity during a stress test as evidenced by lower heart rate variability and higher skin conductance levels.<sup>76</sup> Together, these studies emphasize that higher levels of air pollutants are related to neurobiological changes that may be associated with altered threat and stress responding.

There is currently no established pattern that NO<sub>2</sub> or PM<sub>2.5</sub> preferentially affect microstructure or function. Indeed, both PM<sub>2.5</sub> and NO<sub>2</sub> can penetrate the lungs and initiate an immune response. The resulting systemic inflammation may lead to structural and functional

## SEGREGATION, POLLUTION, AND HIPPOCAMPUS

changes; with rodent research indicating hippocampal changes (e.g., reductions in dendritic spine length) can occur within hours or days of exposure.<sup>23</sup> Differential effects of various pollutants may be observed due to differences in pollutant size, exposure duration, lag times, or the biological mechanisms targeted (e.g., necrosis, neuroinflammation, alterations to neurotransmitters or their receptors).<sup>23</sup> For example, larger particulate matter (PM<sub>10</sub>) may enter the lungs, but PM<sub>2.5</sub> is small enough to be absorbed in the blood stream.<sup>32</sup> A recent meta-analysis of neuroimaging work suggested higher levels of ambient exposure to PM<sub>2.5</sub> were more strongly associated with decreased hippocampal volume compared to PM<sub>10</sub> or NO<sub>2</sub>.<sup>37</sup> However, exposure durations are not always accurately reported, which may influence how robustly specific pollutants are associated with neurobiological or psychiatric outcomes. In general, long-term pollutant exposure appears more closely associated with macro- and micro-structural changes over the life course whereas short-term exposure is highly correlated with neural activity.<sup>73</sup> Further research is needed to understand the unique and interactive impact of different air pollutant concentrations and exposure times on the hippocampus and the central nervous system more broadly.

In the context of recent trauma exposure, the implications of alterations of these features are mixed. For example, several studies among trauma-exposed individuals indicate that lesser CGH integrity is associated with more severe PTSD<sup>45,77</sup> while others suggest lower FA values are associated with less severe PTSD symptoms.<sup>78,79</sup> Inconsistencies also exist in the relationship between hippocampal reactivity to threat and PTSD. Prior AURORA study analyses reveal an inverse relationship between hippocampal reactivity to fearful faces and PTSD symptoms.<sup>47</sup> However, youth with PTSD show greater hippocampal reactivity to threat compared to youth without PTSD and those with remitting PTSD.<sup>80</sup> More work is therefore needed to determine

## SEGREGATION, POLLUTION, AND HIPPOCAMPUS

how or whether the neurobiological patterns associated with air pollution exposure are related to PTSD risk. The patterns of results may also be more related to psychiatric outcomes unmeasured in this study. For example, lesser CGH integrity is more consistently associated with other psychiatric outcomes, including mild cognitive impairment and Alzheimer's disease.<sup>81</sup> Finally, preclinical work suggests air pollutants are associated with poor performance on hippocampus-dependent tasks, including impaired contextual fear memory.<sup>82</sup> The present study only examined hippocampus activity during a passive threat task, and future work should also consider investigating the relationship between air pollutants and hippocampal activity during a fear learning and memory paradigm.

Notably, while we found that residential segregation was significantly associated with higher levels of air pollutants and subsequently differences in hippocampal structure and function, residential segregation and NO<sub>2</sub> or PM<sub>2.5</sub> were not significantly associated with symptoms of PTSD. It is possible that the effects of pollution exposure on PTSD symptoms may take longer than six months to manifest, which would be missed in our acutely traumatized sample. Further, there may be underreporting of symptoms from NH Black participants, who live in the most segregated and polluted neighborhoods in this sample; stigma surrounding mental illness is more common among racially minoritized groups and may contribute to underreporting in this study.<sup>83</sup> Alternatively, NH Black participants, who disproportionately experience chronic socioeconomic and/or environmental stressors, may develop adaptive responses to future stressors, buffering the harmful effects of the TE.<sup>84</sup> Finally, another possible explanation is that the present measurement of air pollutants did not fully capture each individual's personal exposure level. The yearly average was derived from models using data from regional air quality monitors, and the number of monitoring stations varies substantially across American cities. Air

## SEGREGATION, POLLUTION, AND HIPPOCAMPUS

pollutant exposure measured with personal and mobile monitors may be more closely associated with an individual's mental health, and future work should consider both personal and neighborhood exposure.<sup>85</sup>

### **Limitations**

The present findings should be interpreted in light of several limitations. Home address was collected at study enrollment, and residential stability or length of time at residence was not assessed. It is unknown if participants lived in the same neighborhood, neighborhoods similar in composition, or significantly different neighborhoods throughout their lifespan. Further, it was not possible to determine the chronicity of exposure or characterize any fluctuations in residential segregation or pollution exposure that may have important neuropsychiatric effects. However, prior work suggests long-term pollutant exposure is more closely associated with structural changes while short-term exposure is highly correlated with neural activity.<sup>73</sup> Future studies may therefore expand on our work to investigate both individual exposure and environmental changes within a neighborhood over time. Additionally, we did not account for any physical health conditions participants may have had. Although the AURORA study surveyed participants' assessments of their overall health and asked whether their health prevented them from engaging in physical activities, it did not collect information about specific diagnoses. Both residential segregation and exposure to air pollution are associated with adverse physical health outcomes such as asthma and hypertension,<sup>34,62</sup> and these conditions may affect hippocampal features<sup>34,86</sup> and posttraumatic symptoms in ways unaccounted for in our work. Further research is also needed to examine nuances within residential segregation itself, as there may be social and cultural factors associated with living in segregated, homogenous neighborhoods that are *beneficial* to mental health, such as closer ties with neighbors.<sup>87</sup> Some

## SEGREGATION, POLLUTION, AND HIPPOCAMPUS

studies of predominantly Asian or Hispanic neighborhoods, for example, have found that recent immigrants can find greater social capital and cultural resources within ethnic enclaves that offset socioeconomic disadvantages and bolster their mental health.<sup>5,59,87,88</sup>

### **Conclusions**

The present study highlights important relationships between socioenvironmental factors and hippocampal neurobiology. We found that NH Black trauma survivors were exposed to disproportionately higher levels of air pollution. Air pollution, in turn, was associated with variability in hippocampal structure and function, which have been heavily implicated in PTSD. Future research that integrates assessments of societal-level factors may offer a more nuanced understanding of neurobiological correlates of trauma responses, which may help guide early identification of individuals most at-risk in the aftermath of a TE. Such work may also guide policy efforts to address these environmental inequities across American cities and determine potential long-term effects of inequities on health.<sup>89</sup>



## SEGREGATION, POLLUTION, AND HIPPOCAMPUS

### TABLES

**Table 1.** Sample characteristics

<b>Variable</b>	<b>Frequency (%) or Mean (standard deviation, [range])</b>
<b>Sex at birth</b>	
Male	95 (34%)
Female	183 (66%)
<b>Age (years)</b>	
	35.3 (13.3, [18-70])
<b>Ethnoracial group</b>	
Non-Hispanic white	95 (34%)
Non-Hispanic Black	127 (46%)
Hispanic	45 (16%)
Non-Hispanic Other	11 (4%)
<b>Annual household income</b>	
Under \$19,000	75 (27%)
\$19,001 – \$35,000	95 (34%)
\$35,001 – \$50,000	37 (13%)
\$50,001 – \$75,000	25 (9%)
\$75,001 – \$100,000	18 (6%)
Over \$100,000	28 (10%)
<b>Highest education</b>	
Less than high school	18 (6%)
High school	156 (56%)
College	83 (30%)
Postgraduate	21 (8%)
<b>Trauma type</b>	
Motor vehicle collision	191 (69%)
Assault	32 (12%)
Fall	24 (9%)
Non-motorized collision	11 (4%)
Animal attack	9 (3%)

## SEGREGATION, POLLUTION, AND HIPPOCAMPUS

Other	11 (4%)
<hr/>	
Week 2 Symptoms	
<hr/>	
PTSD	29.1 (17.5, [0.0-79.0])
Depression	55.0 (9.7, [37.1-81.1])
Anxiety	8.0 (4.3, [0.0-16.0])
<hr/>	
Air Pollution	
<hr/>	
PM <sub>2.5</sub>	7.50 (1.46, [4.28-10.21])
NO <sub>2</sub>	22.12 (3.93, [6.45-29.1])
<hr/>	
Neighborhood Characteristics	
<hr/>	
ICERaceinc	-0.11 (0.34, [-0.89-0.64])
ADI	57.96 (29.80, [4-100])

**Abbreviations:** **PTSD:** PCL-5 score; **Depression:** PROMIS depression score; **Anxiety:** PROMIS anxiety score; **PM<sub>2.5</sub>:** particulate matter 2.5 in  $\mu\text{g}/\text{m}^3$ ; **NO<sub>2</sub>:** nitrogen dioxide in  $\mu\text{g}/\text{m}^3$ ; **ICERaceinc:** Index of Concentration at the Extremes (combined racial and economic); **ADI:** Area Deprivation Index.

SEGREGATION, POLLUTION, AND HIPPOCAMPUS

**Table 2.** Results from the linear mixed effect model predicting PTSD symptoms with air pollutants and residential segregation

Predictors	Estimates	Std. Beta	Standardized Std. Error	Standardized CI	p-value
<i>Intercept</i>	34.39	0.01	0.05	-0.09 – 0.11	<.001
PM <sub>2.5</sub> Concentration (µg/m <sup>3</sup> )	-0.08	-0.01	0.06	-0.13 – 0.12	.920
NO <sub>2</sub> Concentration (µg/m <sup>3</sup> )	-0.31	-0.06	0.06	-0.19 – 0.06	.315
ICERaceinc	0.76	0.01	0.06	-0.11 – 0.14	.829
Time	-2.66	-0.17	0.02	-0.20 – -0.13	<.001*
Sex [ <i>female</i> ]	6.04	0.16	0.05	0.06 – 0.26	.002*
Age (yrs)	0.11	0.08	0.05	-0.02 – 0.18	.128
Annual Family Income (\$)	-1.97	-0.18	0.06	-0.29 – -0.06	.002*

$\sigma^2 = 97.03$

$\tau_{00 \text{ PID}} = 202.24$

ICC = 0.68

$N_{\text{PID}} = 278$

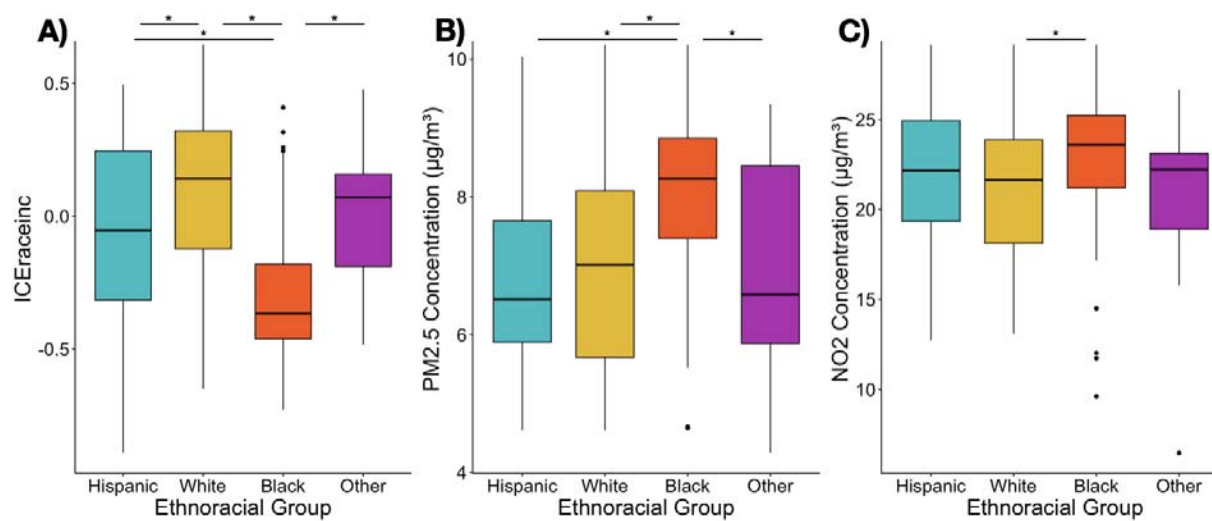
Observations = 969

Marginal  $R^2$  / Conditional  $R^2 = 0.085$  / 0.703

*Abbreviations:* **ICERaceinc:** Index of Concentration at the Extremes (combined racial and economic segregation); **PM<sub>2.5</sub>:** particulate matter 2.5; **NO<sub>2</sub>:** nitrogen dioxide. *Note:* \* indicates  $p < .05$

## SEGREGATION, POLLUTION, AND HIPPOCAMPUS

### FIGURES



#### Figure 1. Ethnoracial differences between residential segregation and air pollutant

**exposure.** There was a significant main effect of ethnoracial group on residential segregation, exposure to PM<sub>2.5</sub>, and exposure to NO<sub>2</sub> (\* represents  $p < .05$  between each pair straddled by

horizontal lines). **[A]** Non-Hispanic Black participants lived in more segregated and

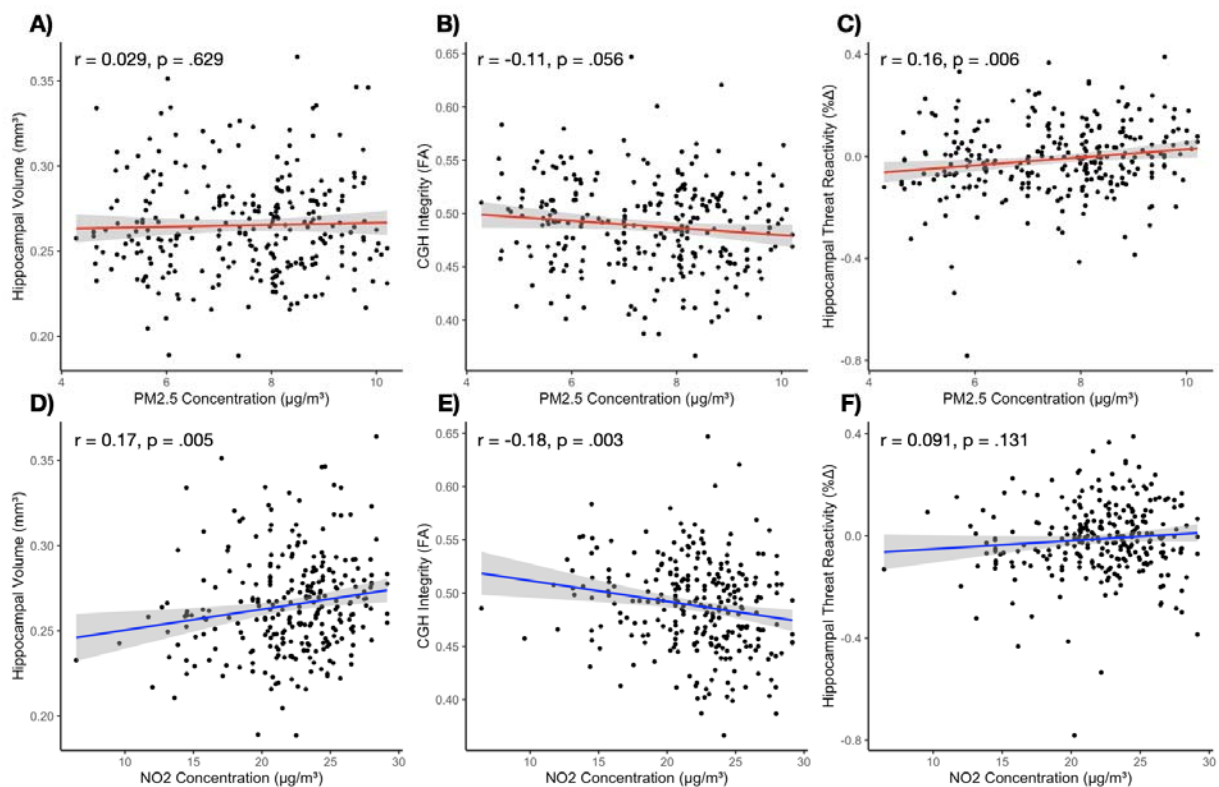
disadvantaged neighborhoods (a more negative ICERaceinc) compared to Hispanic, non-Hispanic white, and non-Hispanic Other participants. Hispanic participants lived in more segregated and

disadvantaged neighborhoods compared to non-Hispanic white participants. **[B]** Non-Hispanic

Black participants were exposed to higher concentrations of PM<sub>2.5</sub> compared to Hispanic, non-

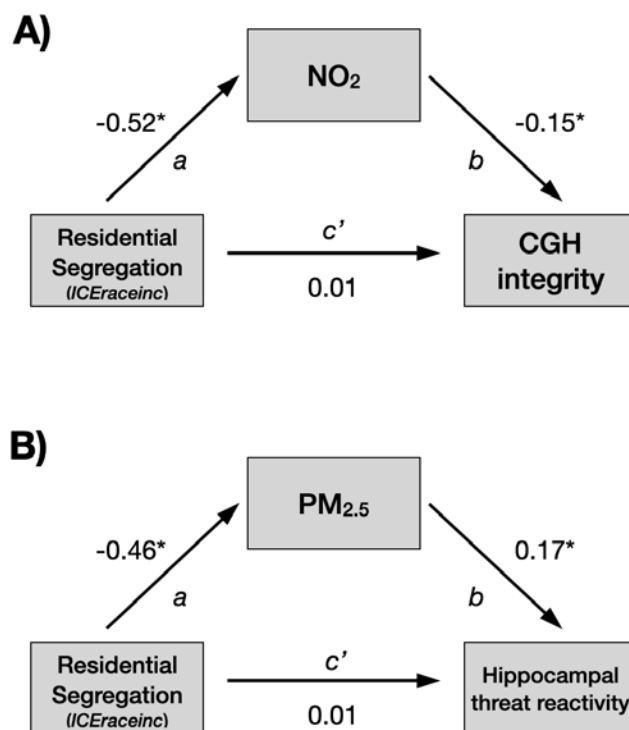
Hispanic white, and non-Hispanic Other participants. **[C]** Non-Hispanic Black participants were exposed to higher concentrations of NO<sub>2</sub> compared to non-Hispanic white participants.

## SEGREGATION, POLLUTION, AND HIPPOCAMPUS



**Figure 2. Bivariate associations between air pollutants and hippocampal features.** PM<sub>2.5</sub> concentration was not associated with [A] hippocampus volume or [B] parahippocampal cingulum (CGH) tract integrity as measured by fractional anisotropy (FA); however, it was [C] positively correlated with hippocampal threat reactivity ( $p < .05$ ). NO<sub>2</sub> concentration was [D] positively correlated with hippocampal volume and [E] negatively correlated with CGH FA values ( $ps < .05$ ). [F] NO<sub>2</sub> was not associated with hippocampal threat reactivity. (Dots represent individual participants, lines represent the linear lines of best fit, and shading represents the 95% confidence interval.)

SEGREGATION, POLLUTION, AND HIPPOCAMPUS



**Figure 3. Path analysis of associations between residential segregation, air pollutants, and hippocampal features.**

**[A]** After covarying for sex, age, income, and Week 2 PCL-5 scores,

NO<sub>2</sub> was a significant mediator of the effect of residential segregation (ICERaceinc) on the

integrity of the parahippocampal cingulum (CGH) (a\*b path:  $\beta = 0.08$ , CI [0.01,

0.15], SE = 0.04). There was no direct association between residential segregation and the

CGH (c' path:  $\beta = 0.01$ , CI [-0.01, 0.02], SE = 0.01). **[B]** PM<sub>2.5</sub> was a significant mediator of

the effect of residential segregation on threat reactivity (a\*b path:  $\beta = -0.08$ , CI [-0.14, -

0.01], SE = 0.033). There was no direct association between residential segregation and threat

reactivity (c' path:  $\beta = 0.01$ , CI [-0.05, 0.07], SE = 0.03). (\* represents a value outside of

the 95% confidence interval)

## SEGREGATION, POLLUTION, AND HIPPOCAMPUS

### REFERENCES

1. Kilpatrick DG, Resnick HS, Milanak ME, Miller MW, Keyes KM, Friedman MJ. National estimates of exposure to traumatic events and PTSD prevalence using DSM-IV and DSM-5 criteria. *J Trauma Stress*. Oct 2013;26(5):537-47. doi:10.1002/jts.21848
2. Santiago PN, Ursano RJ, Gray CL, et al. A systematic review of PTSD prevalence and trajectories in DSM-5 defined trauma exposed populations: intentional and non-intentional traumatic events. *PLoS One*. 2013;8(4):e59236. doi:10.1371/journal.pone.0059236
3. Tost H, Champagne FA, Meyer-Lindenberg A. Environmental influence in the brain, human welfare and mental health. *Nat Neurosci*. Oct 2015;18(10):1421-31. doi:10.1038/nn.4108
4. Bjørndal LD, Ebrahimi OV, Lan X, Nes RB, Røysamb E. Mental health and environmental factors in adults: A population-based network analysis. *American Psychologist*. 2024;79(3):368-383. doi:10.1037/amp0001208
5. Alegria M, Molina KM, Chen CN. Neighborhood characteristics and differential risk for depressive and anxiety disorders across racial/ethnic groups in the United States. *Depress Anxiety*. Jan 2014;31(1):27-37. doi:10.1002/da.22197
6. Schuck AM, Widom CS. Posttraumatic Stress Disorder in Maltreated Children Grown Up: The Influence of Neighborhood. *J Trauma Stress*. Feb 2019;32(1):78-87. doi:10.1002/jts.22355
7. Webb EK, Ely TD, Rowland GE, et al. Neighborhood Disadvantage and Neural Correlates of Threat and Reward Processing in Survivors of Recent Trauma. *JAMA Netw Open*. Sep 5 2023;6(9):e2334483. doi:10.1001/jamanetworkopen.2023.34483

## SEGREGATION, POLLUTION, AND HIPPOCAMPUS

8. Webb EK, Weis CN, Huggins AA, et al. Neural impact of neighborhood socioeconomic disadvantage in traumatically injured adults. *Neurobiol Stress*. Nov 2021;15:100385.  
doi:10.1016/j.ynstr.2021.100385
9. Massey DS, Denton NA. The Dimensions of Residential Segregation\*. *Social Forces*. 1988;67(2):281-315. doi:10.1093/sf/67.2.281
10. Goldmann E, Galea S. Social and Environmental Influences on Population Mental Health. *Population Mental Health*. Routledge; 2011:51-68.
11. Ahern J, Galea S. Social context and depression after a disaster: the role of income inequality. *J Epidemiol Community Health*. Sep 2006;60(9):766-70.  
doi:10.1136/jech.2006.042069
12. Hruska B, Pacella-LaBarbara ML, Castro IE, George RL, Delahanty DL. Incorporating community-level risk factors into traumatic stress research: Adopting a public health lens. *J Anxiety Disord*. Mar 2022;86:102529. doi:10.1016/j.janxdis.2022.102529
13. Lee MA. Neighborhood residential segregation and mental health: a multilevel analysis on Hispanic Americans in Chicago. *Soc Sci Med*. Jun 2009;68(11):1975-84.  
doi:10.1016/j.socscimed.2009.02.040
14. Do DP, Locklar LRB, Florsheim P. Triple jeopardy: the joint impact of racial segregation and neighborhood poverty on the mental health of black Americans. *Soc Psychiatry Psychiatr Epidemiol*. May 2019;54(5):533-541. doi:10.1007/s00127-019-01654-5
15. Chen BC, Lui JHL, Liu V, et al. Mapping Racial/Ethnic Disparities in Youth Psychiatric Emergencies and Associations With Neighborhood Racial Composition, Child Opportunity, and Inequality. *Clinical Psychological Science*. 2022;doi:10.1177/21677026221121762



## SEGREGATION, POLLUTION, AND HIPPOCAMPUS

16. Pabayo R, Dunn EC, Gilman SE, Kawachi I, Molnar BE. Income inequality within urban settings and depressive symptoms among adolescents. *J Epidemiol Community Health*. Oct 2016;70(10):997-1003. doi:10.1136/jech-2015-206613
17. Mendenhall R, Lee MJ, Cole SW, et al. Black Mothers in Racially Segregated Neighborhoods Embodying Structural Violence: PTSD and Depressive Symptoms on the South Side of Chicago. *J Racial Ethn Health Disparities*. Oct 2023;10(5):2513-2527. doi:10.1007/s40615-022-01432-1
18. Benny C, Patte KA, Veugelers P, Leatherdale ST, Pabayo R. Income inequality and depression among Canadian secondary students: Are psychosocial well-being and social cohesion mediating factors? *SSM Popul Health*. Mar 2022;17:100994. doi:10.1016/j.ssmph.2021.100994
19. Turpin R, Giorgi S, Curtis B. Pandemic distress associated with segregation and social stressors. *Front Public Health*. 2023;11:1092269. doi:10.3389/fpubh.2023.1092269
20. Braithwaite I, Zhang S, Kirkbride JB, Osborn DPJ, Hayes JF. Air Pollution (Particulate Matter) Exposure and Associations with Depression, Anxiety, Bipolar, Psychosis and Suicide Risk: A Systematic Review and Meta-Analysis. *Environ Health Perspect*. Dec 2019;127(12):126002. doi:10.1289/EHP4595
21. Levert-Levitt E, Shapira G, Sragovich S, et al. Oral microbiota signatures in post-traumatic stress disorder (PTSD) veterans. *Mol Psychiatry*. Nov 2022;27(11):4590-4598. doi:10.1038/s41380-022-01704-6
22. Vert C, Sanchez-Benavides G, Martinez D, et al. Effect of long-term exposure to air pollution on anxiety and depression in adults: A cross-sectional study. *Int J Hyg Environ Health*. Aug 2017;220(6):1074-1080. doi:10.1016/j.ijheh.2017.06.009

## SEGREGATION, POLLUTION, AND HIPPOCAMPUS

23. Zundel CG, Ryan P, Brokamp C, et al. Air pollution, depressive and anxiety disorders, and brain effects: A systematic review. *Neurotoxicology*. Dec 2022;93:272-300.  
doi:10.1016/j.neuro.2022.10.011
24. Borroni E, Pesatori AC, Bollati V, Buoli M, Carugno M. Air pollution exposure and depression: A comprehensive updated systematic review and meta-analysis. *Environ Pollut*. Jan 1 2022;292(Pt A):118245. doi:10.1016/j.envpol.2021.118245
25. Power MC, Kioumourtzoglou MA, Hart JE, Okereke OI, Laden F, Weisskopf MG. The relation between past exposure to fine particulate air pollution and prevalent anxiety: observational cohort study. *BMJ*. Mar 24 2015;350:h1111. doi:10.1136/bmj.h1111
26. Krieger N, Waterman PD, Gryparis A, Coull BA. Black carbon exposure, socioeconomic and racial/ethnic spatial polarization, and the Index of Concentration at the Extremes (ICE). *Health Place*. Jul 2015;34:215-28. doi:10.1016/j.healthplace.2015.05.008
27. Kravitz-Wirtz N, Crowder K, Hajat A, Sass V. The Long-Term Dynamics of Racial/Ethnic Inequality in Neighborhood Air Pollution Exposure, 1990-2009. *Du Bois Rev*. Fall 2016;13(2):237-259. doi:10.1017/S1742058X16000205
28. Woo B, Kravitz-Wirtz N, Sass V, Crowder K, Teixeira S, Takeuchi DT. Residential Segregation and Racial/Ethnic Disparities in Ambient Air Pollution. *Race Soc Probl*. Mar 2019;11(1):60-67. doi:10.1007/s12552-018-9254-0
29. Gray SC, Edwards SE, Miranda ML. Race, socioeconomic status, and air pollution exposure in North Carolina. *Environmental Research*. 2013/10/01/ 2013;126:152-158.  
doi:<https://doi.org/10.1016/j.envres.2013.06.005>

## SEGREGATION, POLLUTION, AND HIPPOCAMPUS

30. Collins TW, Grineski SE. Racial/Ethnic Disparities in Short-Term PM<sub>2.5</sub> Air Pollution Exposures in the United States. *Environ Health Perspect*. Aug 2022;130(8):87701.  
doi:10.1289/EHP11479
31. Hajat A, Hsia C, O'Neill MS. Socioeconomic Disparities and Air Pollution Exposure: a Global Review. *Curr Environ Health Rep*. Dec 2015;2(4):440-50. doi:10.1007/s40572-015-0069-5
32. Fiordelisi A, Piscitelli P, Trimarco B, Coscioni E, Iaccarino G, Sorriento D. The mechanisms of air pollution and particulate matter in cardiovascular diseases. *Heart Fail Rev*. May 2017;22(3):337-347. doi:10.1007/s10741-017-9606-7
33. Armas FV, D'Angiulli A. Neuroinflammation and Neurodegeneration of the Central Nervous System from Air Pollutants: A Scoping Review. *Toxics*. Nov 6 2022;10(11)doi:10.3390/toxics10110666
34. Fonken LK, Xu X, Weil ZM, et al. Air pollution impairs cognition, provokes depressive-like behaviors and alters hippocampal cytokine expression and morphology. *Mol Psychiatry*. Oct 2011;16(10):987-95, 973. doi:10.1038/mp.2011.76
35. Ehsanifar M, Montazeri Z, Taheri MA, Rafati M, Behjati M, Karimian M. Hippocampal inflammation and oxidative stress following exposure to diesel exhaust nanoparticles in male and female mice. *Neurochem Int*. May 2021;145:104989. doi:10.1016/j.neuint.2021.104989
36. Woodward NC, Haghani A, Johnson RG, et al. Prenatal and early life exposure to air pollution induced hippocampal vascular leakage and impaired neurogenesis in association with behavioral deficits. *Transl Psychiatry*. Nov 29 2018;8(1):261. doi:10.1038/s41398-018-0317-1
37. Balboni E, Filippini T, Crous-Bou M, Guxens M, Erickson LD, Vinceti M. The association between air pollutants and hippocampal volume from magnetic resonance imaging:

## SEGREGATION, POLLUTION, AND HIPPOCAMPUS

A systematic review and meta-analysis. *Environ Res.* Mar 2022;204(Pt A):111976.

doi:10.1016/j.envres.2021.111976

38. Dimitrov-Discher A, Wenzel J, Kabisch N, et al. Residential green space and air pollution are associated with brain activation in a social-stress paradigm. *Sci Rep.* Jun 23 2022;12(1):10614. doi:10.1038/s41598-022-14659-z

39. Smith ME. Bilateral hippocampal volume reduction in adults with post-traumatic stress disorder: A meta-analysis of structural MRI studies. *Hippocampus.* 2005;15(6):798-807. doi:10.1002/hipo.20102

40. Gilbertson MW, Shenton ME, Ciszewski A, et al. Smaller hippocampal volume predicts pathologic vulnerability to psychological trauma. *Nat Neurosci.* Nov 2002;5(11):1242-7. doi:10.1038/nn958

41. Amico F, Meisenzahl E, Koutsouleris N, Reiser M, Moller HJ, Frodl T. Structural MRI correlates for vulnerability and resilience to major depressive disorder. *J Psychiatry Neurosci.* Jan 2011;36(1):15-22. doi:10.1503/jpn.090186

42. Rao U, Chen LA, Bidesi AS, Shad MU, Thomas MA, Hammen CL. Hippocampal changes associated with early-life adversity and vulnerability to depression. *Biol Psychiatry.* Feb 15 2010;67(4):357-64. doi:10.1016/j.biopsych.2009.10.017

43. Belleau EL, Treadway MT, Pizzagalli DA. The Impact of Stress and Major Depressive Disorder on Hippocampal and Medial Prefrontal Cortex Morphology. *Biol Psychiatry.* Mar 15 2019;85(6):443-453. doi:10.1016/j.biopsych.2018.09.031

44. Chen MC, Hamilton JP, Gotlib IH. Decreased hippocampal volume in healthy girls at risk of depression. *Arch Gen Psychiatry.* Mar 2010;67(3):270-6. doi:10.1001/archgenpsychiatry.2009.202

## SEGREGATION, POLLUTION, AND HIPPOCAMPUS

45. Fani N, King TZ, Jovanovic T, et al. White matter integrity in highly traumatized adults with and without post-traumatic stress disorder. *Neuropsychopharmacology*. Nov 2012;37(12):2740-6. doi:10.1038/npp.2012.146
46. Wong SA, Lebois LAM, Ely TD, et al. Internal capsule microstructure mediates the relationship between childhood maltreatment and PTSD following adulthood trauma exposure. *Mol Psychiatry*. Mar 17 2023;doi:10.1038/s41380-023-02012-3
47. Tanriverdi B, Gregory DF, Olino TM, et al. Hippocampal Threat Reactivity Interacts with Physiological Arousal to Predict PTSD Symptoms. *J Neurosci*. Jul 25 2022;42(34):6593-604. doi:10.1523/JNEUROSCI.0911-21.2022
48. van Rooij SJH, Ravi M, Ely TD, et al. Hippocampal activation during contextual fear inhibition related to resilience in the early aftermath of trauma. *Behav Brain Res*. Jun 25 2021;408:113282. doi:10.1016/j.bbr.2021.113282
49. Hayes JP, LaBar KS, McCarthy G, et al. Reduced hippocampal and amygdala activity predicts memory distortions for trauma reminders in combat-related PTSD. *J Psychiatr Res*. May 2011;45(5):660-9. doi:10.1016/j.jpsychires.2010.10.007
50. Dretsch MN, Wood KH, Daniel TA, et al. Exploring the Neurocircuitry Underpinning Predictability of Threat in Soldiers with PTSD Compared to Deployment Exposed Controls. *Open Neuroimag J*. 2016;10:111-124. doi:10.2174/1874440001610010111
51. Hunt JFV, Buckingham W, Kim AJ, et al. Association of Neighborhood-Level Disadvantage With Cerebral and Hippocampal Volume. *JAMA Neurol*. Apr 1 2020;77(4):451-460. doi:10.1001/jamaneurol.2019.4501

## SEGREGATION, POLLUTION, AND HIPPOCAMPUS

52. Pohl DJ, Seblova D, Avila JF, et al. Relationship between Residential Segregation, Later-Life Cognition, and Incident Dementia across Race/Ethnicity. *Int J Environ Res Public Health*. Oct 26 2021;18(21)doi:10.3390/ijerph182111233
53. Taylor RL, Cooper SR, Jackson JJ, Barch DM. Assessment of Neighborhood Poverty, Cognitive Function, and Prefrontal and Hippocampal Volumes in Children. *JAMA Netw Open*. Nov 2 2020;3(11):e2023774. doi:10.1001/jamanetworkopen.2020.23774
54. McLean SA, Ressler K, Koenen KC, et al. The AURORA Study: a longitudinal, multimodal library of brain biology and function after traumatic stress exposure. *Mol Psychiatry*. Feb 2020;25(2):283-296. doi:10.1038/s41380-019-0581-3
55. Weathers FW, Litz BT, Keane TM, Palmieri PA, Marx BP, Schnurr PP. The PTSD Checklist for DSM-5 (PCL-5). [www.ptsd.va.gov](http://www.ptsd.va.gov).
56. Cella D, Riley W, Stone A, et al. The Patient-Reported Outcomes Measurement Information System (PROMIS) developed and tested its first wave of adult self-reported health outcome item banks: 2005-2008. *J Clin Epidemiol*. Nov 2010;63(11):1179-94. doi:10.1016/j.jclinepi.2010.04.011
57. Massey DS, Booth A, Crouter AC. The Prodigal Paradigm Returns: Ecology Comes Back to Sociology. *Does It Take A Village? Community Effects on Children, Adolescents, and Families*. 01/01 2001:41-48.
58. Larrabee Sonderlund A, Charifson M, Schoenthaler A, Carson T, Williams NJ. Racialized economic segregation and health outcomes: A systematic review of studies that use the Index of Concentration at the Extremes for race, income, and their interaction. *PLoS One*. 2022;17(1):e0262962. doi:10.1371/journal.pone.0262962

## SEGREGATION, POLLUTION, AND HIPPOCAMPUS

59. Tang F, Jiang Y, Li K, Rosso AL. Residential Segregation and Depressive Symptoms in Older Chinese Immigrants: The Mediating Role of Social Processes. *Gerontologist*. Sep 2023;63(8):1376-1384. doi:10.1093/geront/gnad027
60. Ward JB, Albrecht SS, Robinson WR, et al. Neighborhood language isolation and depressive symptoms among elderly U.S. Latinos. *Ann Epidemiol*. Nov 2018;28(11):774-782. doi:10.1016/j.annepidem.2018.08.009
61. Besser LM, Meyer OL, Jones MR, et al. Neighborhood segregation and cognitive change: Multi-Ethnic Study of Atherosclerosis. *Alzheimers Dement*. Apr 2023;19(4):1143-1151. doi:10.1002/alz.12705
62. Krieger N, Waterman PD, Spasojevic J, Li W, Maduro G, Van Wye G. Public Health Monitoring of Privilege and Deprivation With the Index of Concentration at the Extremes. *Am J Public Health*. Feb 2016;106(2):256-63. doi:10.2105/AJPH.2015.302955
63. Wei Y, Xing X, Shtein A, et al. Data from: Daily and Annual PM2.5, O3, and NO2 Concentrations at ZIP Codes for the Contiguous U.S., 2000-2016, v1.0. 2022. *Palisades, New York*.
64. Wei Y, Yazdi MD, Di Q, et al. Emulating causal dose-response relations between air pollutants and mortality in the Medicare population. *Environ Health*. May 6 2021;20(1):53. doi:10.1186/s12940-021-00742-x
65. Webb EK, Weis CN, Huggins AA, et al. Neighborhood disadvantage is associated with stable deficits in neurocognitive functioning in traumatically-injured adults. *Health Place*. Jan 2021;67:102493. doi:10.1016/j.healthplace.2020.102493

## SEGREGATION, POLLUTION, AND HIPPOCAMPUS

66. Harnett NG, Finegold KE, Lebois LAM, et al. Structural covariance of the ventral visual stream predicts posttraumatic intrusion and nightmare symptoms: a multivariate data fusion analysis. *Transl Psychiatry*. Aug 8 2022;12(1):321. doi:10.1038/s41398-022-02085-8
67. Stevens JS, Harnett NG, Lebois LAM, et al. Brain-Based Biotypes of Psychiatric Vulnerability in the Acute Aftermath of Trauma. *Am J Psychiatry*. Nov 2021;178(11):1037-1049. doi:10.1176/appi.ajp.2021.20101526
68. Esteban O, Birman D, Schaer M, Koyejo OO, Poldrack RA, Gorgolewski KJ. MRIQC: Advancing the automatic prediction of image quality in MRI from unseen sites. *PLoS One*. 2017;12(9):e0184661. doi:10.1371/journal.pone.0184661
69. Hayes AF, Rockwood NJ. Regression-based statistical mediation and moderation analysis in clinical research: Observations, recommendations, and implementation. *Behav Res Ther*. Nov 2017;98:39-57. doi:10.1016/j.brat.2016.11.001
70. Fann N, Coffman E, Timin B, Kelly JT. The estimated change in the level and distribution of PM(2.5)-attributable health impacts in the United States: 2005-2014. *Environ Res*. Nov 2018;167:506-514. doi:10.1016/j.envres.2018.08.018
71. Bell ML, Ebisu K. Environmental inequality in exposures to airborne particulate matter components in the United States. *Environ Health Perspect*. Dec 2012;120(12):1699-704. doi:10.1289/ehp.1205201
72. Herting MM, Bottenhorn KL, Cotter DL. Outdoor air pollution and brain development in childhood and adolescence. *Trends Neurosci*. Aug 2024;47(8):593-607. doi:10.1016/j.tins.2024.06.008
73. de Prado Bert P, Mercader EMH, Pujol J, Sunyer J, Mortamais M. The Effects of Air Pollution on the Brain: a Review of Studies Interfacing Environmental Epidemiology and



## SEGREGATION, POLLUTION, AND HIPPOCAMPUS

Neuroimaging. *Curr Environ Health Rep*. Sep 2018;5(3):351-364. doi:10.1007/s40572-018-

0209-9

74. Binter AC, Kusters MSW, van den Dries MA, et al. Air pollution, white matter microstructure, and brain volumes: Periods of susceptibility from pregnancy to preadolescence.

*Environ Pollut*. Nov 15 2022;313:120109. doi:10.1016/j.envpol.2022.120109

75. Lubczynska MJ, Muetzel RL, El Marroun H, et al. Exposure to Air Pollution during Pregnancy and Childhood, and White Matter Microstructure in Preadolescents. *Environ Health*

*Perspect*. Feb 2020;128(2):27005. doi:10.1289/EHP4709

76. Miller JG, Gillette JS, Manczak EM, Kircanski K, Gotlib IH. Fine Particle Air Pollution and Physiological Reactivity to Social Stress in Adolescence: The Moderating Role of Anxiety and Depression. *Psychosom Med*. Sep 2019;81(7):641-648.

doi:10.1097/PSY.0000000000000714

77. Sanjuan PM, Thoma R, Claus ED, Mays N, Caprihan A. Reduced white matter integrity in the cingulum and anterior corona radiata in posttraumatic stress disorder in male combat veterans: a diffusion tensor imaging study. *Psychiatry Res*. Dec 30 2013;214(3):260-8.

doi:10.1016/j.psychres.2013.09.002

78. Weis CN, Belleau EL, Pedersen WS, Miskovich TA, Larson CL. Structural Connectivity of the Posterior Cingulum Is Related to Reexperiencing Symptoms in Posttraumatic Stress Disorder. *Chronic Stress (Thousand Oaks)*. Jan-Dec 2018;2doi:10.1177/2470547018807134

79. Li L, Lei D, Li L, et al. White Matter Abnormalities in Post-traumatic Stress Disorder Following a Specific Traumatic Event. *EBioMedicine*. Feb 2016;4:176-83.

doi:10.1016/j.ebiom.2016.01.012

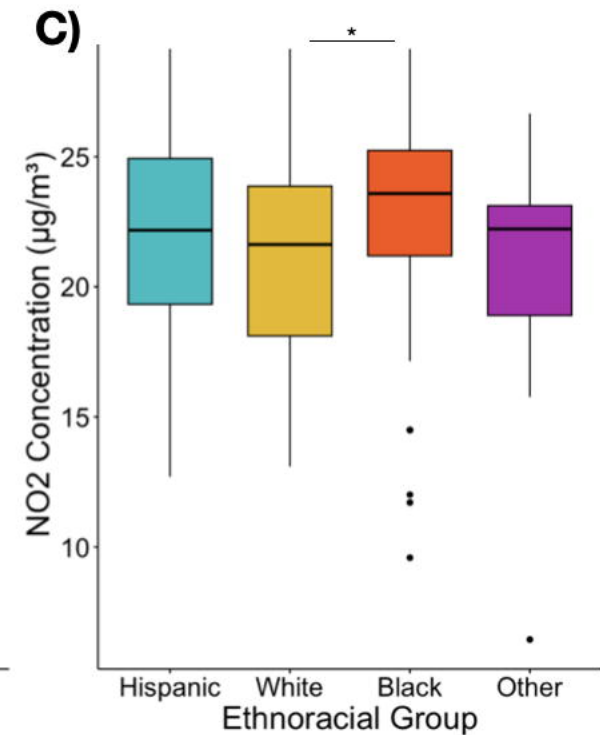
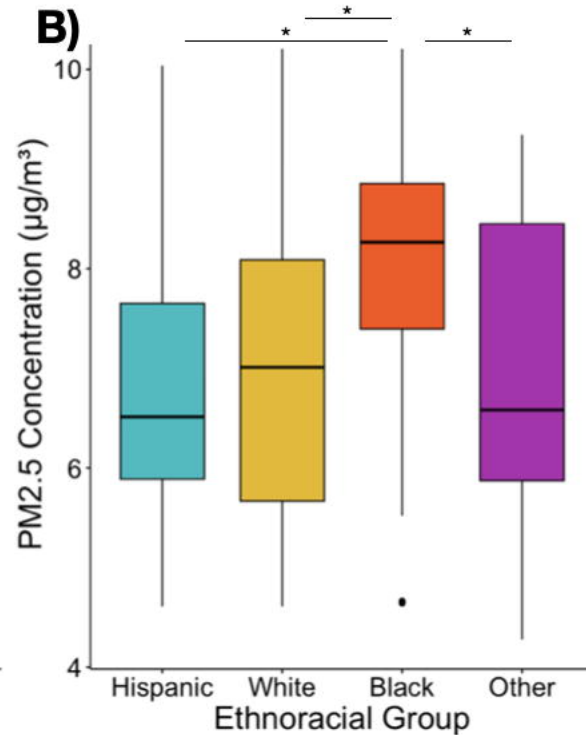
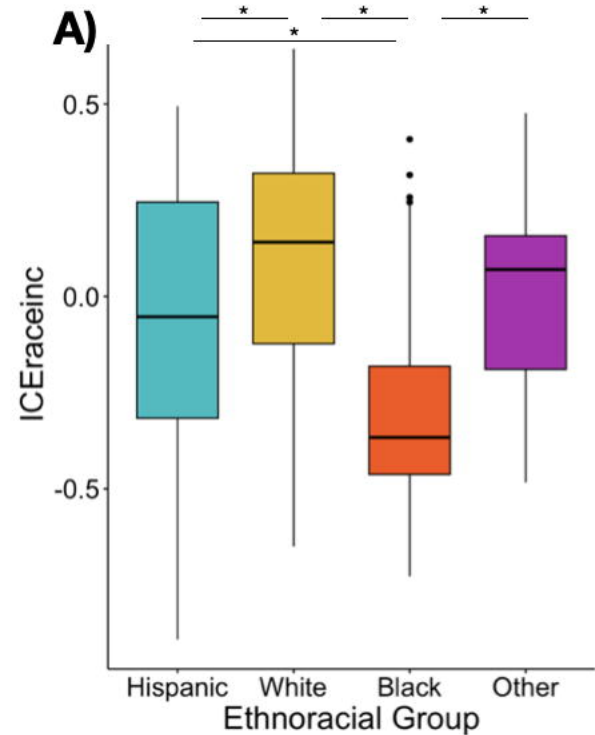
## SEGREGATION, POLLUTION, AND HIPPOCAMPUS

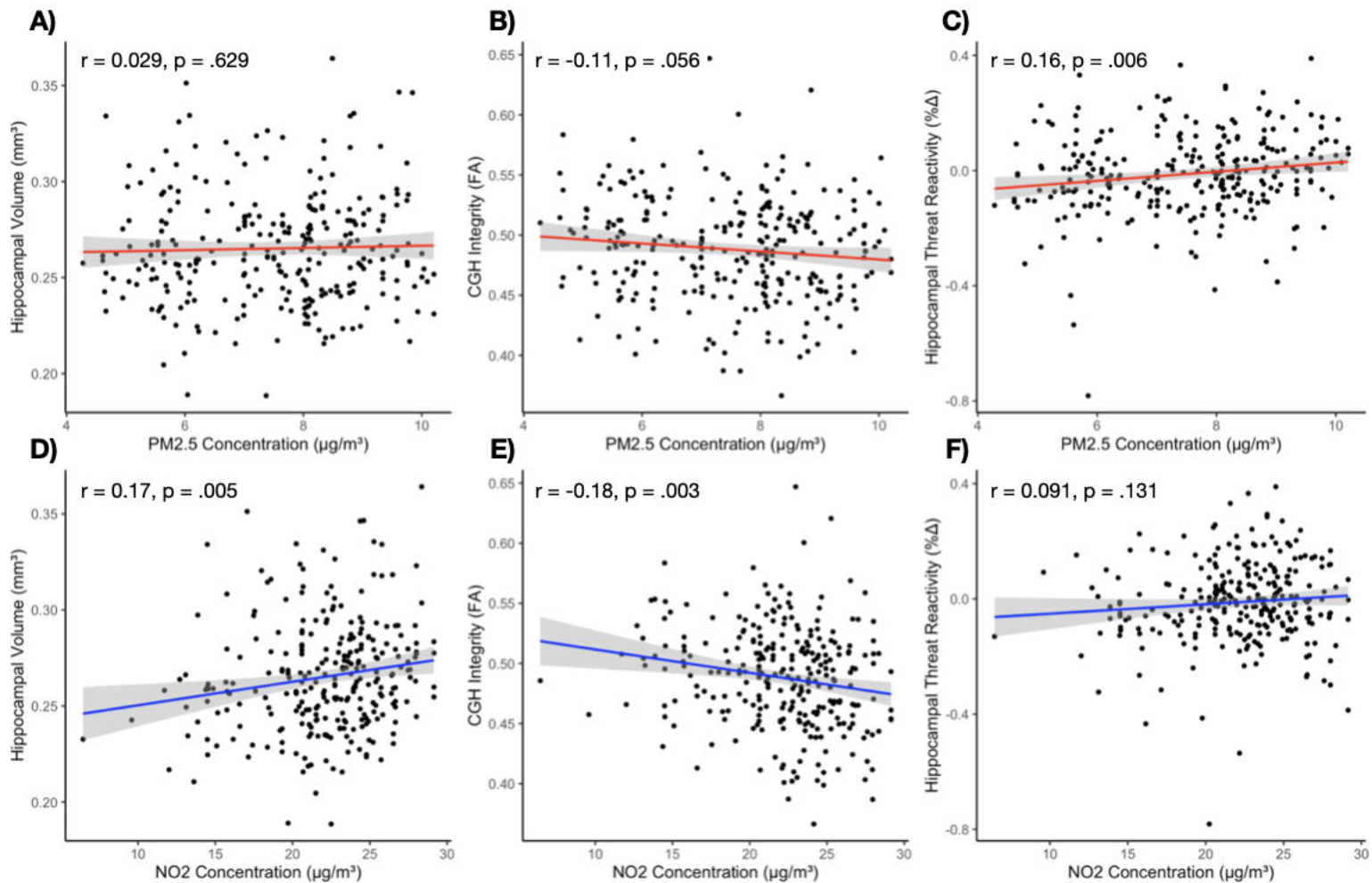
80. George GC, Keding TJ, Heyn SA, Herringa RJ. Longitudinal hippocampal circuit change differentiates persistence and remission of pediatric posttraumatic stress disorder. *Depress Anxiety*. Jan 2022;39(1):8-18. doi:10.1002/da.23229
81. Dalboni da Rocha JL, Bramati I, Coutinho G, Tovar Moll F, Sitaram R. Fractional Anisotropy changes in Parahippocampal Cingulum due to Alzheimer's Disease. *Sci Rep*. Feb 14 2020;10(1):2660. doi:10.1038/s41598-020-59327-2
82. Bolton JL, Huff NC, Smith SH, et al. Maternal stress and effects of prenatal air pollution on offspring mental health outcomes in mice. *Environ Health Perspect*. Sep 2013;121(9):1075-82. doi:10.1289/ehp.1306560
83. Eylem O, de Wit L, van Straten A, et al. Stigma for common mental disorders in racial minorities and majorities a systematic review and meta-analysis. *BMC Public Health*. Jun 8 2020;20(1):879. doi:10.1186/s12889-020-08964-3
84. LaMotte ME, Elliott M, Mouzon DM. Revisiting the Black-White Mental Health Paradox During the Coronavirus Pandemic. *J Racial Ethn Health Disparities*. Dec 2023;10(6):2802-2815. doi:10.1007/s40615-022-01457-6
85. Bales E, Nikzad N, Quick N, Ziftei C, Patrick K, Griswold WG. Personal pollution monitoring: mobile real-time air quality in daily life. *Personal and Ubiquitous Computing*. 2019;23(2):309-328. doi:10.1007/s00779-019-01206-3
86. Janowitz D, Schwahn C, Borchardt U, et al. Genetic, psychosocial and clinical factors associated with hippocampal volume in the general population. *Transl Psychiatry*. Oct 14 2014;4(10):e465. doi:10.1038/tp.2014.102

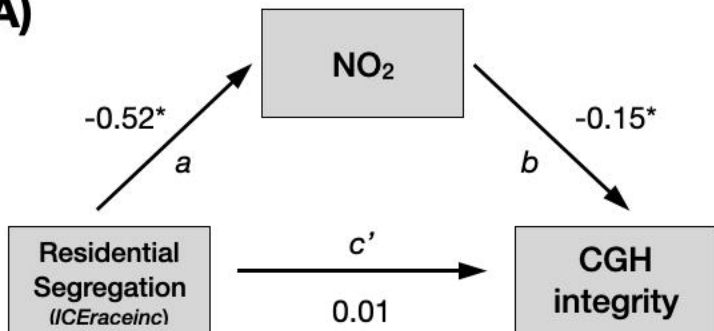
## SEGREGATION, POLLUTION, AND HIPPOCAMPUS

87. Thomas Tobin CS, Erving CL, Barve A. Race and SES Differences in Psychosocial Resources: Implications for Social Stress Theory. *Social Psychology Quarterly*. 2020;84(1):1-25. doi:10.1177/0190272520961379
88. Nobles CJ, Valentine SE, Zepeda ED, et al. Residential segregation and mental health among Latinos in a nationally representative survey. *J Epidemiol Community Health*. Apr 2017;71(4):318-323. doi:10.1136/jech-2016-208034
89. Rentschler J, Leonova N. Global air pollution exposure and poverty. *Nat Commun*. Jul 22 2023;14(1):4432. doi:10.1038/s41467-023-39797-4

## SEGREGATION, POLLUTION, AND HIPPOCAMPUS





**A)****B)**