

1 **Title**

2 Climate change and tuberculosis: an analytical framework

3

4 **Author list**

5 Matthew J Saunders^{1,2}, Delia Boccia³, Palwasha Y Khan⁴, Lara Goscè⁵, Antonio Gasparini⁶,
6 Rebecca A Clark⁵, Julia M Pescarini³, Richard G White⁵, Rein MGJ Houben⁵, Matteo Zignol⁷,
7 Nebiat Gebreselassie⁷ and C Finn McQuaid⁵

8

9 **Corresponding author**

10 Christopher Finn McQuaid, London School of Hygiene & Tropical Medicine, Keppel Street,
11 London, WC1E 7HT, UK. Email: finn.mcquaid@lshtm.ac.uk

12

13 **Affiliations**

14 ¹Faculty of Public Health and Policy, London School of Hygiene and Tropical Medicine, London,
15 UK

16 ²Institute for Infection and Immunity, City St. George's, University of London, London, UK

17 ³Faculty of Epidemiology and Population Health, London School of Hygiene & Tropical
18 Medicine, London, UK

19 ⁴Department of Clinical Research, London School of Hygiene & Tropical Medicine, London, UK

20 ⁵TB Modelling Group, TB Centre, and Centre for Mathematical Modelling of Infectious Diseases,
21 Department of Infectious Disease Epidemiology, London School of Hygiene & Tropical
22 Medicine, London, UK

23 ⁶Environment & Health Modelling (EHM) Lab, Department of Public Health, Environments and
24 Society, London School of Hygiene & Tropical Medicine, London, UK

25 ⁷Global Tuberculosis Programme, WHO, Geneva, Switzerland

26

27 **Word count:** 4300/4500

28 **Summary:** 155/150

29 **References:** 235/75

30 **Figures and tables:** 2 figures, 3 tables, 2 panels

31 **Supplementary material:** 2 tables

32

33

34 Summary (155/150 words)

35 Climate change is likely to exacerbate a range of determinants which drive tuberculosis, the
36 world's leading infectious disease killer. However, tuberculosis is often neglected in wider
37 climate health discussions.

38

39 Commissioned by the World Health Organization, we developed an analytical framework
40 outlining potential causal relationships between climate change and tuberculosis. We drew on
41 existing knowledge of tuberculosis determinants, identified which are likely to be sensitive to the
42 effects of climate change, and conceptualised the mechanistic pathways through which this
43 might occur. We collated evidence for these pathways through literature reviews. Our reviews
44 found no studies directly linking climate change and tuberculosis, warranting research to build
45 evidence for action.

46

47 The available evidence supports the existence of plausible links between climate change and
48 tuberculosis, and highlights the need to include tuberculosis in climate risk adaptation and
49 mitigation programmes, and climate-resilient funding and response mechanisms. Further
50 evidence is urgently needed to quantify the effects of climate change on tuberculosis.

51 Introduction

52 The health effects of climate change operate through complex and interconnected pathways, as
53 outlined in the World Health Organization (WHO) Framework on Climate Change and Health,
54 and further characterised in the Sixth Assessment Report of the Intergovernmental Panel on
55 Climate Change (IPCC) and *Lancet* Countdown on climate change and health(1–3). Briefly, the
56 WHO Framework postulates that climate-related hazards (e.g. extreme weather events, sea
57 level rise) interact with vulnerabilities (e.g. gender, comorbidities) and exposures (e.g. food and
58 health systems) leading to direct and indirect health effects. These include injuries and mortality;
59 increases in zoonoses, food-, water- and vector-borne diseases, non-communicable diseases;
60 and mental ill health(4). Climate change is also already affecting determinants of health by
61 driving poverty, causing migration and displacement, worsening food and water insecurity, and
62 disrupting access to healthcare and support systems(1–3). Importantly, many of the effects of
63 climate change are cascading and compounding, and disproportionately affect populations in
64 low- and middle-income countries where resilience and ability to adapt are lower(1–3).

65
66 These climate-sensitive determinants of health significantly overlap with key determinants of the
67 global tuberculosis (TB) epidemic(5). Despite progress, TB continues to rank among the world's
68 leading causes of death(6). In 2023 alone, an estimated 10.8 million people fell ill from TB, and
69 1.25 million lost their lives to the disease(6). Determinants which heighten exposure to
70 *Mycobacterium tuberculosis*, the causative agent of TB, such as overcrowding and poor living
71 conditions, increase the risk of transmission and subsequent infection (hereafter referred to as
72 TB infection). Meanwhile, determinants more specifically linked to health, which principally
73 impair the immune system, such as undernutrition, HIV, alcohol use disorders, smoking, and
74 diabetes, increase the risk of progressing to symptomatic and/or infectious disease (referred to
75 here as TB disease, to distinguish it from TB infection)(6) and may worsen health outcomes.
76 Many of these determinants can further exacerbate the known financial and psychosocial
77 burden associated with TB, pushing TB-affected households deeper into poverty.

78
79 Notably, many countries with a high TB burden, including India, Indonesia and the
80 Philippines(6), are also highly vulnerable to the effects of climate change, as measured by
81 several recognised indices(7–9)(Figure 1). Positioning TB in the context of climate change has,
82 however, been overlooked due to insufficient research. A recent scoping review suggested that
83 climate change increases TB infection and disease risk, particularly among vulnerable

84 populations(10), while a second review described the potential effects of climate change on
85 several of the TB determinants described above(11). Despite these findings, the available
86 evidence has not been systematically mapped against a comprehensive framework describing
87 the potential pathways linking climate change and TB. Although some frameworks have been
88 proposed (12,13), further work is needed to establish a global, consensus-based framework on
89 the basis of evidence. Consequently, the current and potential future effects of climate change
90 on TB are often overlooked in the wider climate and health discussion(14,15), and no coherent
91 strategy exists to support countries to mitigate these effects. Developing a framework is
92 therefore an urgent priority to guide effective policy and action.

93
94 In response to this gap, the WHO Global TB Programme commissioned the creation of an
95 analytical framework outlining potential causal relationships between climate change and the TB
96 epidemic, and research gaps to facilitate evidence-building for action. Here, we describe the
97 creation of this framework and its comparison to existing evidence, identify research domains in
98 the area of climate change and TB critically lacking in evidence, and suggest example entry
99 points for intervention.

100 Methodology

101 Development of this framework followed an iterative review process. We first convened an
102 internal working group of TB and climate researchers to develop key questions informing the
103 creation of a preliminary analytical framework, drawing on existing literature, systematic reviews
104 and WHO publications on TB determinants, and wider discussions with key informants and
105 experts. WHO then convened a multi-stakeholder consultation, bringing together
106 representatives of countries, civil society, researchers and public health practitioners, on the
107 Impact of Climate Change on the TB response, where attendees reviewed the analytical
108 framework, supporting evidence, and research gaps. The framework was updated and refined
109 following this consultation meeting.

110
111 Our internal working group first identified the principal social and health determinants of TB and
112 conceptualised how these affect different aspects of the TB epidemic and response. We then
113 selected which of these were likely to be sensitive to the effects of climate change, based on
114 previous reviews(10,11), and hypothesised the causal mechanisms through which this might
115 occur. This included identifying relevant climate factors (e.g. changing rainfall patterns or land

116 degradation), the pathway of influence (e.g. socioeconomic changes or migration), and how this
117 might affect TB (e.g. increasing transmission or worsening health outcomes).

118
119 After developing and visualizing these hypothesized causal relationships in a preliminary
120 analytical framework, we undertook a narrative literature review. This gathered and synthesized
121 the best available evidence to support, reject, or refine our hypotheses, focusing on three
122 examples of critical pathways: i) migration and displacement, ii) food and water insecurity; and
123 iii) health system disruptions. These example pathways, which are described further below and
124 are termed climate/health links from hereon, were selected based upon:

- 125 1. the plausibility of their relationship to climate change, i.e., to what extent a particular
126 pathway was hypothesized to be sensitive to the effects of climate change;
- 127 2. their plausibility and importance for TB, informed by their relevance to key WHO End TB
128 Strategy(16) indicators and social and health determinants of TB emphasized by WHO;
129 and
- 130 3. the likely availability of existing data and other types of evidence, as well as their
131 amenability for future analysis.

132
133 Although each climate/health link could potentially influence multiple consequences for TB,
134 including TB infection, TB disease and TB outcomes, we tested the framework by focusing our
135 literature review on a single TB-related consequence for each climate/health link. For example,
136 we reviewed the effect of health system disruptions on TB outcomes, but did not conduct a
137 comprehensive review of other potential consequences associated with the same climate/health
138 link, such as an increase in transmission due to delayed diagnoses, or higher TB disease rates
139 resulting from reduced preventive treatment coverage.

140 Search strategy and selection criteria

141 We undertook six searches of the MEDLINE database: three investigating the effect of climate
142 change on each climate/health link; and three investigating the effect of each climate/health link
143 on the consequence for TB hypothesized as the primary pathway for that link. Our search
144 strategy (Annex 1) combined searching abstracts and titles for key words with Medical Subject
145 Heading (MeSH) terms. For example, to generate evidence linking climate change to changing
146 TB infection because of migration and displacement, one search combined the concepts: 1)
147 *Climate change* with 2) *Migration and displacement*, and 9) *Study type*; and a second combined

148 2) *Migration and displacement* with 5) *TB*, 6) *Infection*, and 9) *Study type*. We further increased
149 our body of evidence by checking references of included articles, citation forward searching
150 (checking for articles that cited included articles), and consulting key experts to obtain
151 information on recent or ongoing studies not captured in our searches. Given the broad scope,
152 our search strategy was refined iteratively, including by identifying MeSH terms and key words
153 for relevant articles and adding them to our search terms if not already included.

154
155 We screened titles and abstracts returned by the searches and accessed full-text versions for
156 those potentially eligible for inclusion, including studies in human populations published since
157 2000 in English. For pragmatic reasons, only evidence from modelling studies or pre-existing
158 reviews (including systematic reviews, meta-analyses, scoping reviews, and narrative reviews)
159 was included. Individual studies, case reports, and perspectives were considered only when no
160 reviews or modelling studies could be found, or where they provided a novel perspective. Key
161 data from included articles were extracted into a standardised form. We then conducted a
162 narrative synthesis to summarise key findings relevant to each topic and used this to adjust and
163 refine the analytical framework towards its final state, including highlighting key areas critically
164 lacking in evidence. This was an iterative process, further informed by discussion with other
165 experts and key stakeholders.

166 Role of the funding source

167 Members of the funding body participated as authors on the study and critically reviewed the
168 framework, reviewed and revised the manuscript, and approved the final manuscript as
169 submitted.

170 Analytical framework

171 The resulting framework is presented in Figure 2. At the highest level, elements are captured
172 describing changing **climate factors**. These cover key examples, which are not exhaustive,
173 such as changing temperatures and rainfall (leading to, for example, increased duration and
174 frequency of droughts or extreme heat), rising sea levels and warming of oceans, and extreme
175 weather events (such as flooding, storms, fires, droughts and extreme heat). Factors are
176 incorporated at a range of timescales, including whether the effects are expected to be visible in
177 the near or longer-term future, as well as how long a given effect might last. For example,

178 extreme weather events have already been widely recorded, and generally result in an
179 immediate but (per event) shorter-term effect. In contrast, sea level rises may currently be a
180 more distal prospect, but one which will likely have a longer-term effect.

181
182 As a direct result of these climate factors, a variety of **structural and environmental**
183 **determinants** of TB are potentially affected. These cover examples such as levels of poverty
184 and inequality (both within and between countries); resource crises (such as fuel, housing,
185 materials and other resources); humanitarian crises, conflict and violence over resource
186 competition; ecosystem change (including changes in seasonality, and in the living and
187 nonliving components of ecosystems); land degradation and availability (including changes to
188 vegetation and available farmland); and air quality.

189
190 Changing structural and environmental determinants are then linked to health via a series of
191 **climate/health links**. Three prioritised examples of links are outlined in the sections below and
192 in Table 1; migration and displacement, food and water insecurity, and health system disruption.
193 Each link completes a direct causal pathway through which changes in structural and
194 environmental determinants drive changes in exposure to social and health determinants.

195
196 **Social and health determinants** cover examples such as living conditions and housing
197 (affecting factors such as overcrowding and ventilation); changing social contact as individuals
198 move within and between countries; and changes in prevalence and management of
199 comorbidities including (but not limited to) HIV and diabetes, changes in nutritional status,
200 mental ill health and stigma, and provision of and access to TB prevention and care services.

201
202 Lastly, social and health determinants are explicitly linked to **TB consequences**, where they
203 affect;

- 204 1. the likelihood of exposure to and susceptibility to TB infection;
- 205 2. the risk of progression to TB disease; and
- 206 3. the extent of vulnerability to TB outcomes (including short- and long-term morbidity,
207 disabilities, mortality, acquisition of drug-resistance, and psychological and financial
208 consequences).

209
210 These elements can impact progress towards the goals and targets of the WHO End TB
211 strategy. Increased TB exposure and susceptibility may drive higher transmission, leading to

212 greater infection rates, disease burden, and associated health and social costs. Similarly, TB
213 disease progression influences health outcomes, onward transmission and incidence, and TB-
214 related socio-economic consequences. Moreover, worsening inequalities can exacerbate health
215 disparities, including mortality and TB-related catastrophic costs.

216
217 TB care and prevention programmes may also contribute to climate change, creating a
218 feedback loop within the framework. The healthcare sector more generally is estimated to
219 account for approximately 5% of global emissions(17), and, when specifically considering TB,
220 there are multiple sources of emissions across the TB care cascade(18,19). These include the
221 energy and material inputs required for TB diagnostics and treatment, transportation emissions
222 from patient visits and sample transport, and the medical and biological waste generated as part
223 of providing care.

224
225 Due to the interconnectedness of potential pathways, many of which are cyclic or mutually
226 reinforcing, the framework is not intended to be exhaustive, but seeks to capture the pathways
227 with significant implications for the TB epidemic and response, and those that are amenable to
228 analysis and actionable from a policy perspective. As part of this work, the pathways for the
229 three climate/health links described above were reviewed in detail (Table 1). Two other potential
230 pathways, not reviewed in detail for pragmatic reasons, but which merit further attention, are air
231 pollution and meteorological factors (Panels 1 and 2).

232
233 Importantly, these pathways often create compounding vulnerabilities. For example, displaced
234 populations frequently have reduced access to adequate nutrition and healthcare; those living in
235 poverty who are experiencing food insecurity often concurrently have limited access to
236 healthcare and higher displacement risks; and when extreme weather events cause disruptions
237 to health systems, they typically also cause displacement and disruptions to food security.

238 Migration and displacement

239 Evidence on climate change and migration and displacement

240 Climate change and migration and displacement has an extensive history of research(3), with
241 multiple existent frameworks(20–23) and a wealth of examples of how climate change might
242 drive population movement both between and, more commonly, within countries(24–34). In

243 2023, approximately 20.3 million people were internally displaced as a result of weather-related
244 hazards, while by 2050 that number could increase to 216 million due to slow-onset climate
245 change impacts(35). Several reviews cover circumstances encompassing natural hazards and
246 socioeconomic changes(36–43), including reviews comparing different climate migration
247 models(44–48). Models projecting future migration due to climate change are also numerous.
248 Multiple examples focus on sea level rise and flooding(49–56); although some consider
249 meteorological(57–63), macroeconomic(64,65), and agricultural changes(66,67) and more
250 general frameworks exist(68–72). Given this the IPCC states with high confidence that extreme
251 weather events and variability act as direct drivers of involuntary migration and displacement,
252 and as indirect drivers through deteriorating economic conditions and livelihoods(3). However,
253 patterns of migration due to climate change are likely to be highly context specific and are
254 difficult to project because of the multicausal nature of migration, migration policies, and the
255 scale and nature of any future adaptations. Nevertheless, it is striking that the IPCC states that
256 under all global warming levels there are areas of the world which will become
257 unsafe/uninhabitable, many of which are currently densely populated and have a high TB
258 burden(3).

259 Evidence on migration and displacement and TB infection

260 There is also a large body of evidence linking migration (particularly forced migration and
261 displacement) to TB risk(73,74). While no routine estimates of burden are published, reviews
262 suggest a multi-fold increased risk of TB for displaced persons(75,76). The literature focuses
263 principally on the additional TB disease burden and poor treatment outcomes (partly because of
264 reduced access to care) experienced by displaced people or those in crisis situations(75–79), or
265 on TB disease screening in migrants from high to low TB burden settings(73,80–89). This
266 makes it difficult to establish whether any increase in TB disease in migrants compared to non-
267 migrants from the same region is driven by an increase in transmission and infection resulting
268 from changing living conditions and social contact during transit, in camps and asylum settings,
269 or due to progression to TB disease due to poor nutrition or poor access to preventive care
270 because of barriers such as language, legal status, low resources, stigma, or a combination of
271 all of these. While we focus here on TB infection, it is important to highlight that a combination
272 of several factors described above, including underlying health vulnerabilities, play a role in
273 increasing disease risk throughout the migration and displacement journey(79). In the context of
274 human mobility and TB infection, a review of the impact of conflict on infectious disease found
275 an increase in TB transmission due to displacement(90). A separate review of migrants to low

276 TB burden settings identified case studies where transmission during transit led to
277 geographically widespread clusters(73). Another review comparing transmission in foreign- and
278 native-born communities(91), found that TB in foreign-born populations did not have a
279 significant impact on TB among native populations in Europe. One individual study compared
280 TB infection prevalence, finding no evidence for a link to living in a disaster area but some
281 evidence for a link to overcrowded living conditions(92), while a modelling study considering
282 rural-urban migration in China identified the important role of migration in transmission(93).
283 While multiple reviews identify a high risk of TB infection among migrants across a range of
284 settings, they frequently do not provide direct comparisons with populations of origin to assess
285 changes in transmission risk(78,94–97).

286 Food and water insecurity

287 Evidence on climate change and food and water insecurity

288 Climate change and food and water insecurity likewise have long been known to be intrinsically
289 linked(3), and were the focus of a recent special IPCC report(98). Approximately 733 million
290 people faced hunger in 2023, equivalent to one in eleven people globally and one in five in
291 Africa, and if current trends continue 582 million will still be chronically undernourished by
292 2030(99). Short-term disruptions to food systems due to climate-driven extreme weather events
293 or other disasters such as earthquakes and conflict have been shown to have a direct effect on
294 food and water security as well as nutritional status(99–113), with exposure to such acute
295 events potentially leading to lasting consequences(114,115). Meanwhile, longer-term effects of
296 changing temperatures and precipitation on crop yields, grassland quality, and oceans (through
297 warming and acidification) have already been observed to negatively impact agricultural and
298 aquaculture productivity, with significant future impacts on food security expected(3,116–123).
299 Furthermore, a large body of literature exists reviewing the effects of climate change directly on
300 nutritional status and associated health outcomes(124–131), as well as projecting longer-term
301 effects due to changing calorific availability and diets (132–153), including because of increased
302 food costs. The focus of many of these studies is on malnutrition in children, including stunting
303 and wasting, or on obesity and overweight in adults. Several studies were also found on the
304 effect of climate-induced food insecurity on birth weight, which were not included here.
305 Importantly, although the effects of climate change on food and water insecurity are likely to

306 affect everyone to some extent, they are likely to disproportionately affect high TB burden
307 countries with underlying vulnerabilities in their food systems(3).

308 Evidence on food and water insecurity and TB disease

309 Abundant evidence exists linking food and water insecurity to TB via the pathway of
310 undernutrition. Undernutrition doubles the risk of TB disease, and nearly 10% of TB cases
311 globally are attributable to undernutrition(6), although this proportion is likely higher in many
312 high TB burden countries(154). Most studies use body mass index (BMI), a widely- and easily-
313 used indicator of nutritional status which has been demonstrated to have a log-linear
314 relationship with TB incidence in a range of settings and populations(155,156). Several other
315 systematic reviews and meta-analyses further confirm the association between increased TB
316 disease risk and undernutrition, including in people living with HIV or people with diabetes (157–
317 160). The reverse has also been shown to be true; interventions addressing food insecurity
318 such as provision of food baskets have been shown to reduce TB disease risk(161), In addition,
319 modelling studies have project large reductions in TB burden if undernutrition is addressed(162–
320 164), and the reverse if it worsens(165). Other important pathways exist by which food and
321 water insecurity affect TB consequences. Chief amongst these is an increase in poor TB
322 treatment outcomes associated with undernutrition(166–169), whereas improvements in
323 nutritional status likely improve outcomes(170).

324 Health system disruptions

325 Evidence on climate change and health system disruptions

326 Around 3.5 billion people live in areas highly vulnerable to climate change, with direct
327 consequences for their access to healthcare services(171). There is a substantial body of
328 evidence linking climate change and health systems disruptions(3,79,171–173), demonstrating
329 how climate events compromise healthcare infrastructure, disrupt service provision, and strain
330 the health workforce. Existing literature on health system disruptions predominantly examines
331 the impact of extreme weather events (particularly flooding and storms) on healthcare service
332 delivery, with several reviews emphasizing disruptions to chronic disease management(174–
333 180). One review focuses specifically on challenges faced by the healthcare workforce and how
334 to mitigate these(181), while another evaluated preparedness of hospitals for disasters(182).
335 Further studies from oncology and maternal health highlight how extreme weather events affect

336 access to health services, particularly for vulnerable populations(183–186). These studies
337 provide lessons on changes in healthcare utilization between affected and unaffected
338 communities, and by socioeconomic position(187–190). Studies concerning other natural
339 disasters such as earthquakes and volcanic eruptions were not included in our review but may
340 still provide relevant insight. Beyond natural disasters, emerging evidence highlights additional
341 climate-related disruptions to healthcare. For example, a modelling study demonstrated how
342 emergency department visits may change due to increasing temperatures(191), while another
343 review evaluated the effects of economic recessions (not necessarily climate-induced) on
344 healthcare(192).

345 Evidence on health system disruptions and TB outcomes

346 Much of the evidence on the effects of health system disruption on TB focuses on the recent
347 COVID-19 pandemic, with a strong emphasis on reductions in TB case notifications, a proxy
348 indicator for the number of people reported to have accessed care. These disruptions alone are
349 estimated to have led to nearly 700,000 excess TB deaths between 2020 and 2023(6). Several
350 reviews have collated evidence on the effects of disruptions associated with the pandemic on
351 the TB care cascade(193–197), with some explicitly considering TB treatment and
352 outcomes(6,194,197–200). Meanwhile, modelling studies projected the possible consequences
353 for multiple settings, finding significant increases in incidence and mortality(6,201–206). Due to
354 the nature of the disruptions, most studies combined the effects of disruptions to service
355 delivery and human resources together with disrupted supply chains, with little evidence
356 characterising the effect of disruptions to infrastructure and technologies, energy or sanitation.
357 There is also little evidence on the effect of disruptions on other outcomes, such as disease
358 severity or catastrophic costs. Outside of the pandemic, two recent reviews of the effect of
359 conflict on TB also identified studies from a range of settings, again focused primarily on
360 diagnostic delay and treatment interruption(79,90). Meanwhile, an earlier modelling study
361 evaluated the effect of an Ebola outbreak, finding a reduction in TB diagnosis and treatment
362 success (207).

363 Discussion

364 Through the development of this analytical framework and by undertaking comprehensive
365 literature reviews, we have demonstrated that the effects of climate change on the TB epidemic

366 are likely to be mediated through multiple pathways, and have the potential to be highly
367 consequential. Specific effects will vary by the magnitude of the climate hazard(s), the
368 vulnerability of communities to their effects (e.g. due to differences in underlying TB
369 determinants), and the capacity of communities to adapt (determined by factors including
370 income, living conditions, and access to healthcare and social protection). Importantly, people
371 affected by TB are particularly vulnerable to the effects of climate change because they are
372 already disproportionately poor, undernourished, and may have comorbidities such as HIV. This
373 hinders their ability to adapt effectively, perpetuating inequality and injustice.

374
375 Outlined in Table 2 are a number of research gaps evident from the literature review and a
376 consultation meeting on the Impact of Climate Change on the TB Response convened by WHO,
377 which focus specifically on the three climate/health links described previously. Overall, whilst
378 evidence exists demonstrating the relationship between climate change and each climate/health
379 link (e.g. climate change and food and water insecurity); and between each climate/health link
380 and TB (e.g. food and water insecurity and TB disease), there were no studies directly
381 quantitatively linking climate change and TB, via any of the described climate/health links or
382 otherwise.

383
384 The available evidence demonstrates that efforts to mitigate the effects of climate change on the
385 TB epidemic must adopt a multisectoral approach that addresses underlying TB determinants,
386 and is also responsive to the unique needs of vulnerable populations, especially migrants and
387 displaced populations. Immediate actions should include meeting core obligations under the
388 right to health by ensuring universal health coverage and establishing a social protection floor
389 for all individuals. This requires mobilizing adequate investment to build resilient health systems
390 and to mitigate adverse economic and non-economic fallouts for vulnerable populations. Using
391 the framework to identify relevant entry points for the three climate/health links discussed here,
392 Table 3 outlines some examples of specific measures, which can be mapped to where in the
393 pathway they intervene. Further research is urgently required to develop a prioritised set of
394 feasible, practical and impactful interventions ultimately aiming to address both the short- and
395 long-term effects of climate change.

396
397 To achieve these objectives, States must first recognize the interlinkages between TB and
398 climate change, and ensure the End TB Strategy is implemented synergistically with other
399 global agreements, including the Paris Agreement, the Sendai Framework for Disaster Risk

400 Reduction 2015–2030, the 2030 Agenda for Sustainable Development, and the Global
401 Compacts for Migration and Refugees(208–212). National TB programmes can serve as entry
402 points by monitoring the effects of climate change to build evidence and support decision-
403 making, and foster cooperation with national adaptation policies and institutions. Civil society
404 organizations, particularly those representing TB-affected communities, play an important role in
405 amplifying the voices of those affected by TB within climate mitigation and adaptation initiatives,
406 advocating for equitable policies, and mobilizing resources. These local efforts must be
407 supported by international institutions and collaborative mechanisms to exchange best
408 practices, share data, strengthen evidence, and propose effective mitigation strategies, drawing
409 insights from other health contexts where applicable. Lastly, the effect of the End TB Strategy
410 on climate should also consider how to mitigate the environmental impacts for all the inputs
411 required to ensure and deliver person-centered prevention, treatment and care, ultimately
412 aiming to encourage TB programmes to adopt less carbon-intensive measures and move
413 forward carbon-neutral TB programmes.

414

415 In conclusion, we have shown how evidence supports the existence of causal links between
416 climate change and TB, and how further evidence is urgently needed to quantify the extent of
417 impact on TB. Furthermore, TB needs to be included in climate risk adaptation and mitigation
418 programmes, and climate-resilient funding and response mechanisms. As our work shows,
419 climate change is already hindering progress in the fight against TB, and only through
420 comprehensive action can we prevent it becoming a barrier to ending the global TB epidemic.

421 **Contributors**

422 DB, RGW, RMGJH, MZ, NG and CFM conceived the study. MJS, DB and CFM conceived and
423 designed the framework. All authors critiqued the framework and study approach. MJS, DB,
424 PYK, LG and CFM conducted the literature review. MJS and CFM wrote the first draft of the
425 article. All authors revised and edited the submitted Article. MJS and CFM had full access to all
426 the data in the study and had final responsibility for the decision to submit for publication.

427

428 **Declaration of interests**

429 Members of the funder (MZ, NG) participated as authors on the study and critically reviewed the
430 framework, reviewed and revised the manuscript, and approved the final manuscript as
431 submitted. All other authors declare no competing interests.

432 **Acknowledgements**

433 This work was funded by the WHO (APW 203462345). MJS is also funded by NIHR through a
434 Clinical Lectureship. CFM is also funded by BMGF (TB MAC OPP1135288, INV-059518) and
435 NIH (R-202309-71190). RAC is also funded by BMGF (INV-001754), and NIH (G-202303-
436 69963, R-202309-71190). RGW is also funded by the Wellcome Trust (310728/Z/24/Z,
437 218261/Z/19/Z), NIH (1R01AI147321-01, G-202303-69963, R-202309-71190), EDTCP
438 (RIA208D-2505B), UK MRC (CCF17-7779 via SET Bloomsbury), ESRC (ES/P008011/1),
439 BMGF (INV-004737, INV-035506), and the WHO (2020/985800-0). RMGJH is also funded by
440 the Wellcome Trust (310728/Z/24/Z) and NIH (R-202309-71190). JMP is also funded by the
441 Wellcome Trust (305644/Z/23/Z).

442

443

444 References

- 445 1. Romanello M, Walawender M, Hsu SC, Moskeland A, Palmeiro-Silva Y, Scamman D, et al.
446 The 2024 report of the Lancet Countdown on health and climate change: facing record-
447 breaking threats from delayed action. *The Lancet*. 2024 Nov 9;404(10465):1847–96.
- 448 2. World Health Organization. Climate change [Internet]. [cited 2024 Nov 25]. Available from:
449 <https://www.who.int/news-room/fact-sheets/detail/climate-change-and-health>
- 450 3. IPCC. Climate Change 2022: Impacts, Adaptation and Vulnerability. Contribution of Working
451 Group II to the Sixth Assessment Report of the Intergovernmental Panel on Climate Change
452 [H.-O. Pörtner, D.C. Roberts, M. Tignor, E.S. Poloczanska, K. Mintenbeck, A. Alegría, M.
453 Craig, S. Langsdorf, S. Lösschke, V. Möller, A. Okem, B. Rama (eds.)]. Cambridge University
454 Press, Cambridge, UK and New York, NY, USA: Cambridge University Press; 2022. 3056 p.
- 455 4. Heinz A, Brandt L. Climate change and mental health: direct, indirect, and intersectional
456 effects. *Lancet Reg Health – Eur* [Internet]. 2024 Aug 1 [cited 2024 Nov 27];43. Available
457 from: [https://www.thelancet.com/journals/lanep/article/PIIS2666-7762\(24\)00136-4/fulltext](https://www.thelancet.com/journals/lanep/article/PIIS2666-7762(24)00136-4/fulltext)
- 458 5. Lönnroth K, Jaramillo E, Williams BG, Dye C, Raviglione M. Drivers of tuberculosis
459 epidemics: The role of risk factors and social determinants. *Soc Sci Med*. 2009 Jun
460 1;68(12):2240–6.
- 461 6. World Health Organization. Global Tuberculosis Report 2024 [Internet]. Geneva; [cited 2024
462 Dec 20]. Available from: [https://www.who.int/teams/global-tuberculosis-programme/tb-](https://www.who.int/teams/global-tuberculosis-programme/tb-reports/global-tuberculosis-report-2023)
463 [reports/global-tuberculosis-report-2023](https://www.who.int/teams/global-tuberculosis-programme/tb-reports/global-tuberculosis-report-2023)
- 464 7. University of Notre Dame. Notre Dame Global Adaptation Initiative [Internet]. [cited 2024 Sep
465 20]. Available from: <https://gain.nd.edu/our-work/country-index/>
- 466 8. INFORM is a collaboration of the Inter-Agency Standing Committee Reference Group on
467 Risk, Early Warning and Preparedness and the European Commission. The European
468 Commission Joint Research Centre is the scientific lead of INFORM. INFORM Risk Index
469 2022 [Internet]. [cited 2024 Sep 20]. Available from: [https://drmkc.jrc.ec.europa.eu/inform-](https://drmkc.jrc.ec.europa.eu/inform-index)
470 [index](https://drmkc.jrc.ec.europa.eu/inform-index)
- 471 9. The WorldRiskReport 2023 - Disaster Risk and Diversity - World | ReliefWeb [Internet].

- 472 Bündnis Entwicklung Hilft; 2023 Sep [cited 2024 Sep 20]. Available from:
473 <https://reliefweb.int/report/world/worldriskreport-2023-disaster-risk-and-diversity>
- 474 10. Maharjan B, Gopali RS, Zhang Y. A scoping review on climate change and tuberculosis.
475 Int J Biometeorol. 2021 Oct 1;65(10):1579–95.
- 476 11. Kharwadkar S, Attanayake V, Duncan J, Navaratne N, Benson J. The impact of climate
477 change on the risk factors for tuberculosis: A systematic review. Environ Res. 2022
478 Sep;212(Pt C):113436.
- 479 12. Migliori GB, Raviglione MC, editors. Essential Tuberculosis. 1st ed. 2021 edition.
480 Springer; 2021. 446 p.
- 481 13. Unitaid. From millions to megatons: A climate and nature assessment of ten key health
482 products. Geneva, Switzerland; 2023.
- 483 14. Mora C, McKenzie T, Gaw IM, Dean JM, von Hammerstein H, Knudson TA, et al. Over
484 half of known human pathogenic diseases can be aggravated by climate change. Nat Clim
485 Change. 2022 Sep;12(9):869–75.
- 486 15. World Economic Forum. World Economic Forum. 2018 [cited 2024 Sep 20]. Why climate
487 change is the biggest global health threat of the century. Available from:
488 [https://www.weforum.org/agenda/2018/11/climate-change-biggest-global-health-threat-of-](https://www.weforum.org/agenda/2018/11/climate-change-biggest-global-health-threat-of-century-doctors-warn/)
489 [century-doctors-warn/](https://www.weforum.org/agenda/2018/11/climate-change-biggest-global-health-threat-of-century-doctors-warn/)
- 490 16. Uplekar M, Weil D, Lonroth K, Jaramillo E, Lienhardt C, Dias HM, et al. WHO's new
491 End TB Strategy. The Lancet. 2015 May 2;385(9979):1799–801.
- 492 17. Pichler PP, Jaccard IS, Weisz U, Weisz H. International comparison of health care
493 carbon footprints. Environ Res Lett. 2019 May;14(6):064004.
- 494 18. Harries AD, Martinez L, Chakaya JM. Tackling climate change: measuring the carbon
495 footprint of preventing, diagnosing and treating TB. Public Health Action. 2021 Mar
496 21;11(1):40–40.
- 497 19. Martins MF, Dauphinais MR, Tabackman A, Narasimhan PB, Nielsen MC, Miller NS, et
498 al. Clearing the air: microcosting the carbon impact of drug-susceptible pulmonary TB
499 treatment. Int J Tuberc Lung Dis Off J Int Union Tuberc Lung Dis. 2024 Oct 1;28(10):488–93.

- 500 20. Schütte S, Gemenne F, Zaman M, Flahault A, Depoux A. Connecting planetary health,
501 climate change, and migration. *Lancet Planet Health*. 2018 Feb 1;2(2):e58–9.
- 502 21. Fussell E, Hunter LM, Gray CL. Measuring the environmental dimensions of human
503 migration: The demographer’s toolkit. *Glob Environ Change*. 2014 Sep 1;28:182–91.
- 504 22. Hunter LM, Simon DH. Time to Mainstream the Environment into Migration Theory? *Int*
505 *Migr Rev*. 2023 Mar 1;57(1):5–35.
- 506 23. Checchi F, Testa A, Gimma A, Koum-Besson E, Warsame A. A method for small-area
507 estimation of population mortality in settings affected by crises. *Popul Health Metr*. 2022 Jan
508 11;20(1):4.
- 509 24. Oliveira J, Pereda P. The impact of climate change on internal migration in Brazil. *J*
510 *Environ Econ Manag*. 2020 Sep 1;103:102340.
- 511 25. Richa, Sen S. Climate variability and migration in Bihar: An empirical analysis. *Int J*
512 *Disaster Risk Reduct*. 2024 Mar 1;103:104301.
- 513 26. Call MA, Gray C, Yunus M, Emch M. Disruption, not displacement: Environmental
514 variability and temporary migration in Bangladesh. *Glob Environ Change*. 2017 Sep
515 1;46:157–65.
- 516 27. Nawrotzki RJ, Runfola DM, Hunter LM, Riosmena F. Domestic and International Climate
517 Migration from Rural Mexico. *Hum Ecol*. 2016 Dec 1;44(6):687–99.
- 518 28. Nawrotzki RJ, Hunter LM, Runfola DM, Riosmena F. Climate change as a migration
519 driver from rural and urban Mexico. *Environ Res Lett*. 2015 Nov;10(11):114023.
- 520 29. Nawrotzki RJ, Riosmena F, Hunter LM, Runfola DM. Amplification or suppression: Social
521 networks and the climate change—migration association in rural Mexico. *Glob Environ*
522 *Change*. 2015 Nov 1;35:463–74.
- 523 30. Williams NE, Gray C. Spatial and temporal dimensions of weather shocks and migration
524 in Nepal. *Popul Environ*. 2020 Mar 1;41(3):286–305.
- 525 31. Curtis KJ, Fussell E, DeWaard J. Recovery Migration After Hurricanes Katrina and Rita:
526 Spatial Concentration and Intensification in the Migration System. *Demography*. 2015 Jun

- 527 18;52(4):1269–93.
- 528 32. Simatele D, Simatele M. Migration as an adaptive strategy to climate variability: a study
529 of the Tonga-speaking people of Southern Zambia. *Disasters*. 2015;39(4):762–81.
- 530 33. Bohra-Mishra P, Oppenheimer M, Hsiang SM. Nonlinear permanent migration response
531 to climatic variations but minimal response to disasters. *Proc Natl Acad Sci*. 2014 Jul
532 8;111(27):9780–5.
- 533 34. Yoo SH, Agadjanian V. Drought and migration: a case study of rural Mozambique. *Popul
534 Environ*. 2024 Jan 5;46(1):3.
- 535 35. IDMC - Internal Displacement Monitoring Centre [Internet]. [cited 2025 Jan 24]. Global
536 Report on Internal Displacement (GRID). Available from: [https://www.internal-](https://www.internal-displacement.org/global-report)
537 [displacement.org/global-report](https://www.internal-displacement.org/global-report)
- 538 36. Nations U. Human Development Report 2007/8 [Internet]. Human Development Reports.
539 United Nations; 2008 Jan [cited 2024 Sep 20]. Available from:
540 <https://hdr.undp.org/content/human-development-report-20078>
- 541 37. Daoust G, Selby J. Climate change and migration: A review and new framework for
542 analysis. *WIREs Clim Change*. 2024;15(4):e886.
- 543 38. Ronco M, Tárraga JM, Muñoz J, Piles M, Marco ES, Wang Q, et al. Exploring
544 interactions between socioeconomic context and natural hazards on human population
545 displacement. *Nat Commun*. 2023 Dec 4;14(1):8004.
- 546 39. Duijndam SJ, Botzen WJW, Hagedoorn LC, Aerts JCJH. Anticipating sea-level rise and
547 human migration: A review of empirical evidence and avenues for future research. *WIREs
548 Clim Change*. 2022;13(1):e747.
- 549 40. Mazhin SA, Khankeh H, Farrokhi M, Aminizadeh M, Poursadeqiyan M. Migration health
550 crisis associated with climate change: A systematic review. *J Educ Health Promot*.
551 2020;9(1):97.
- 552 41. Bayar M, Aral MM. An Analysis of Large-Scale Forced Migration in Africa. *Int J Environ
553 Res Public Health*. 2019 Jan;16(21):4210.

- 554 42. World Bank Group. World Bank. [cited 2024 Sep 20]. Groundswell: Preparing for Internal
555 Climate Migration. Available from:
556 [https://www.worldbank.org/en/news/infographic/2018/03/19/groundswell---preparing-for-](https://www.worldbank.org/en/news/infographic/2018/03/19/groundswell---preparing-for-internal-climate-migration)
557 [internal-climate-migration](https://www.worldbank.org/en/news/infographic/2018/03/19/groundswell---preparing-for-internal-climate-migration)
- 558 43. Brown O. Migration and Climate Change No. 31. Geneva: International Organization for
559 Migration; 2008.
- 560 44. Schewel K, Dickerson S, Madson B, Nagle Alverio G. How well can we predict climate
561 migration? A review of forecasting models. *Front Clim* [Internet]. 2024 Jan 4 [cited 2024 Sep
562 20];5. Available from:
563 <https://www.frontiersin.org/journals/climate/articles/10.3389/fclim.2023.1189125/full>
- 564 45. Warren R. The role of interactions in a world implementing adaptation and mitigation
565 solutions to climate change. *Philos Trans R Soc Math Phys Eng Sci*. 2011 Jan
566 13;369(1934):217–41.
- 567 46. Qi H, Bircan T. Modelling and predicting forced migration. *PLOS ONE*. 2023 Apr
568 13;18(4):e0284416.
- 569 47. McMichael C, Dasgupta S, Ayeb-Karlsson S, Kelman I. A review of estimating
570 population exposure to sea-level rise and the relevance for migration. *Environ Res Lett*. 2020
571 Dec;15(12):123005.
- 572 48. Beyer RM, Schewe J, Abel GJ. Modeling climate migration: dead ends and new
573 avenues. *Front Clim* [Internet]. 2023 Aug 29 [cited 2024 Sep 20];5. Available from:
574 <https://www.frontiersin.org/journals/climate/articles/10.3389/fclim.2023.1212649/full>
- 575 49. Tierolf L, Haer T, Athanasiou P, Luijendijk AP, Botzen WJW, Aerts JCJH. Coastal
576 adaptation and migration dynamics under future shoreline changes. *Sci Total Environ*. 2024
577 Mar 20;917:170239.
- 578 50. Hauer ME, Jacobs SA, Kulp SA. Climate migration amplifies demographic change and
579 population aging. *Proc Natl Acad Sci*. 2024 Jan 16;121(3):e2206192119.
- 580 51. Tierolf L, Haer T, Botzen WJW, de Bruijn JA, Ton MJ, Reimann L, et al. A coupled
581 agent-based model for France for simulating adaptation and migration decisions under future

- 582 coastal flood risk. *Sci Rep.* 2023 Mar 13;13(1):4176.
- 583 52. Bell AR, Wrathall DJ, Mueller V, Chen J, Oppenheimer M, Hauer M, et al. Migration
584 towards Bangladesh coastlines projected to increase with sea-level rise through 2100.
585 *Environ Res Lett.* 2021 Feb;16(2):024045.
- 586 53. Robinson C, Dilkina B, Moreno-Cruz J. Modeling migration patterns in the USA under
587 sea level rise. *PLOS ONE.* 2020 Jan 22;15(1):e0227436.
- 588 54. Barnard PL, Erikson LH, Foxgrover AC, Hart JAF, Limber P, O'Neill AC, et al. Dynamic
589 flood modeling essential to assess the coastal impacts of climate change. *Sci Rep.* 2019 Mar
590 13;9(1):4309.
- 591 55. Calil J, Reguero BG, Zamora AR, Losada IJ, Méndez FJ. Comparative Coastal Risk
592 Index (CCRI): A multidisciplinary risk index for Latin America and the Caribbean. *PLOS ONE.*
593 2017 Nov 2;12(11):e0187011.
- 594 56. Kulp SA, Strauss BH. New elevation data triple estimates of global vulnerability to sea-
595 level rise and coastal flooding. *Nat Commun.* 2019 Oct 29;10(1):4844.
- 596 57. Marchiori L, Maystadt JF, Schumacher I. The impact of weather anomalies on migration
597 in sub-Saharan Africa. *J Environ Econ Manag.* 2012 May 1;63(3):355–74.
- 598 58. Hassani-Mahmoei B, Parris BW. Climate change and internal migration patterns in
599 Bangladesh: an agent-based model. *Environ Dev Econ.* 2012 Dec;17(6):763–80.
- 600 59. Nie M, Huang S, Duan W, Leng G, Bai G, Wang Z, et al. Meteorological drought
601 migration characteristics based on an improved spatiotemporal structure approach in the
602 Loess Plateau of China. *Sci Total Environ.* 2024 Feb 20;912:168813.
- 603 60. Missirian A, Schlenker W. Asylum applications respond to temperature fluctuations.
604 *Science.* 2017 Dec 22;358(6370):1610–4.
- 605 61. Entwisle B, Williams NE, Verdery AM, Rindfuss RR, Walsh SJ, Malanson GP, et al.
606 Climate shocks and migration: an agent-based modeling approach. *Popul Environ.* 2016 Sep
607 1;38(1):47–71.
- 608 62. Defrance D, Ramstein G, Charbit S, Vrac M, Famien AM, Sultan B, et al. Consequences

- 609 of rapid ice sheet melting on the Sahelian population vulnerability. *Proc Natl Acad Sci*. 2017
610 Jun 20;114(25):6533–8.
- 611 63. Schutte S, Vestby J, Carling J, Buhaug H. Climatic conditions are weak predictors of
612 asylum migration. *Nat Commun*. 2021 Apr 6;12(1):2067.
- 613 64. Rikani A, Frieler K, Schewe J. Climate change and international migration: Exploring the
614 macroeconomic channel. *PLOS ONE*. 2022 Nov 16;17(11):e0276764.
- 615 65. Reuveny R. Climate-related migration and population health: social science-oriented
616 dynamic simulation model. *BMC Public Health*. 2021 Mar 26;21(1):598.
- 617 66. Linke A, Leutert S, Busby J, Duque M, Shawcroft M, Brewer S. Dry growing seasons
618 predicted Central American migration to the US from 2012 to 2018. *Sci Rep*. 2023 Oct
619 26;13(1):18400.
- 620 67. Cai R, Feng S, Oppenheimer M, Pytlikova M. Climate variability and international
621 migration: The importance of the agricultural linkage. *J Environ Econ Manag*. 2016 Sep
622 1;79:135–51.
- 623 68. Li W, Wang Q, Liu Y, Small ML, Gao J. A spatiotemporal decay model of human mobility
624 when facing large-scale crises. *Proc Natl Acad Sci*. 2022 Aug 16;119(33):e2203042119.
- 625 69. Zhang S, Zhao M, Liu Z, Yang F, Lu B, Zhao Z, et al. City-level population projection for
626 China under different pathways from 2010 to 2100. *Sci Data*. 2023 Nov 17;10(1):809.
- 627 70. Suleimenova D, Arabnejad H, Edeling WN, Groen D. Sensitivity-driven simulation
628 development: a case study in forced migration. *Philos Trans R Soc Math Phys Eng Sci*. 2021
629 Mar 29;379(2197):20200077.
- 630 71. Burzyński M, Docquier F, Scheewel H. The geography of climate migration. *J Demogr*
631 *Econ*. 2021 Sep;87(3):345–81.
- 632 72. Vollset SE, Goren E, Yuan CW, Cao J, Smith AE, Hsiao T, et al. Fertility, mortality,
633 migration, and population scenarios for 195 countries and territories from 2017 to 2100: a
634 forecasting analysis for the Global Burden of Disease Study. *The Lancet*. 2020 Oct
635 17;396(10258):1285–306.

- 636 73. Spruijt I, Erkens C, Greenaway C, Mulder C, Raviglione M, Villa S, et al. Reducing the
637 burden of TB among migrants to low TB incidence countries. *Int J Tuberc Lung Dis*. 2023
638 Mar 1;27(3):182–8.
- 639 74. Zenner D. Crisis-Affected Populations and Tuberculosis. *Microbiol Spectr*. 2017 Feb
640 3;5(1):10.1128/microbiolspec.tnmi7-0031–2016.
- 641 75. Kimbrough W, Saliba V, Dahab M, Haskew C, Checchi F. The burden of tuberculosis in
642 crisis-affected populations: a systematic review. *Lancet Infect Dis*. 2012 Dec 1;12(12):950–
643 65.
- 644 76. Litvinjenko S, Magwood O, Wu S, Wei X. Burden of tuberculosis among vulnerable
645 populations worldwide: an overview of systematic reviews. *Lancet Infect Dis*. 2023 Dec
646 1;23(12):1395–407.
- 647 77. Meaza A, Tola HH, Eshetu K, Mindaye T, Medhin G, Gumi B. Tuberculosis among
648 refugees and migrant populations: Systematic review. *PLoS ONE*. 2022 Jun
649 9;17(6):e0268696.
- 650 78. Proença R, Mattos Souza F, Lisboa Bastos M, Caetano R, Braga JU, Faerstein E, et al.
651 Active and latent tuberculosis in refugees and asylum seekers: a systematic review and
652 meta-analysis. *BMC Public Health*. 2020 Jun 3;20(1):838.
- 653 79. Gebreyohannes EA, Wolde HF, Akalu TY, Clements ACA, Alene KA. Impacts of armed
654 conflicts on tuberculosis burden and treatment outcomes: a systematic review. *BMJ Open*.
655 2024 Mar 7;14(3):e080978.
- 656 80. Pareek M, Greenaway C, Noori T, Munoz J, Zenner D. The impact of migration on
657 tuberculosis epidemiology and control in high-income countries: a review. *BMC Med*. 2016
658 Mar 23;14(1):48.
- 659 81. Arshad S, Bavan L, Gajari K, Paget SNJ, Baussano I. Active screening at entry for
660 tuberculosis among new immigrants: a systematic review and meta-analysis. *Eur Respir J*.
661 2010 Jun 1;35(6):1336–45.
- 662 82. Bozorgmehr K, Razum O, Saure D, Joggerst B, Szecsenyi J, Stock C. Yield of active
663 screening for tuberculosis among asylum seekers in Germany: a systematic review and

- 664 meta-analysis. *Eurosurveillance*. 2017 Mar 23;22(12):30491.
- 665 83. Taha H, Durham J, Reid S. Communicable Diseases Prevalence among Refugees and
666 Asylum Seekers: Systematic Review and Meta-Analysis. *Infect Dis Rep*. 2023 Apr;15(2):188–
667 203.
- 668 84. Klinkenberg E, Manissero D, Semenza JC, Verver S. Migrant tuberculosis screening in
669 the EU/EEA: yield, coverage and limitations. *Eur Respir J*. 2009 Nov 1;34(5):1180–9.
- 670 85. Chan IHY, Kaushik N, Dobler CC. Post-migration follow-up of migrants identified to be at
671 increased risk of developing tuberculosis at pre-migration screening: a systematic review and
672 meta-analysis. *Lancet Infect Dis*. 2017 Jul 1;17(7):770–9.
- 673 86. Lönnroth K, Mor Z, Erkens C, Bruchfeld J, Nathavitharana RR, van der Werf MJ, et al.
674 Tuberculosis in migrants in low-incidence countries: epidemiology and intervention entry
675 points. *Int J Tuberc Lung Dis*. 2017 Jun 1;21(6):624–36.
- 676 87. Hargreaves S, Lönnroth K, Nellums LB, Olaru ID, Nathavitharana RR, Norredam M, et
677 al. Multidrug-resistant tuberculosis and migration to Europe. *Clin Microbiol Infect*. 2017 Mar
678 1;23(3):141–6.
- 679 88. Zenner D, Brals D, Nederby-Öhd J, Menezes D, Aldridge R, Anderson S, et al. Drivers
680 determining TB disease screening yield in four European screening programmes: a
681 comparative analysis. *Eur Respir J [Internet]*. 2023 Jan 1 [cited 2024 Sep 20]; Available from:
682 <https://erj.ersjournals.com/content/early/2023/07/13/13993003.02396-2022>
- 683 89. Hayward S, Harding RM, McShane H, Tanner R. Factors influencing the higher
684 incidence of tuberculosis among migrants and ethnic minorities in the UK. *F1000Research*.
685 2018 Aug 20;7:461.
- 686 90. Marou V, Vardavas CI, Aslanoglou K, Nikitara K, Plyta Z, Leonardi-Bee J, et al. The
687 impact of conflict on infectious disease: a systematic literature review. *Confl Health*. 2024 Apr
688 8;18(1):27.
- 689 91. Sandgren A, Schepisi MS, Sotgiu G, Huitric E, Migliori GB, Manissero D, et al.
690 Tuberculosis transmission between foreign- and native-born populations in the EU/EEA: a
691 systematic review. *Eur Respir J*. 2014 Apr 1;43(4):1159–71.

- 692 92. Murray KO, Castillo-Carandang NT, Mandalakas AM, Cruz AT, Leining LM, Gatchalian
693 SR. Prevalence of Tuberculosis in Children After Natural Disasters, Bohol, Philippines -
694 Volume 25, Number 10—October 2019 - Emerging Infectious Diseases journal - CDC. [cited
695 2024 Sep 20]; Available from: https://wwwnc.cdc.gov/eid/article/25/10/19-0619_article
- 696 93. Yang C, Kang J, Lu L, Guo X, Shen X, Cohen T, et al. The positive externalities of
697 migrant-based TB control strategy in a Chinese urban population with internal migration: a
698 transmission-dynamic modeling study. *BMC Med.* 2021 Apr 20;19(1):95.
- 699 94. Greenaway C, Pareek M, Chakra CNA, Walji M, Makarenko I, Alabdulkarim B, et al. The
700 effectiveness and cost-effectiveness of screening for latent tuberculosis among migrants in
701 the EU/EEA: a systematic review. *Eurosurveillance.* 2018 Apr 5;23(14):17.
- 702 95. Seedat F, Hargreaves S, Nellums LB, Ouyang J, Brown M, Friedland JS. How effective
703 are approaches to migrant screening for infectious diseases in Europe? A systematic review.
704 *Lancet Infect Dis.* 2018 Sep 1;18(9):e259–71.
- 705 96. Ghosh S, Dronavalli M, Raman S. Tuberculosis infection in under-2-year-old refugees:
706 Should we be screening? A systematic review and meta-regression analysis. *J Paediatr Child*
707 *Health.* 2020;56(4):622–9.
- 708 97. Kunst H, Burman M, Arnesen TM, Fiebig L, Hergens MP, Kalkouni O, et al. Tuberculosis
709 and latent tuberculous infection screening of migrants in Europe: comparative analysis of
710 policies, surveillance systems and results. *Int J Tuberc Lung Dis.* 2017 Aug 1;21(8):840–51.
- 711 98. IPCC. Special Report on Climate Change and Land [Internet]. [cited 2024 Sep 20].
712 Available from: <https://www.ipcc.ch/srccl/>
- 713 99. Food and Agriculture Organization of the United Nations, International Fund for
714 Agricultural Development, United Nations International Children’s Emergency Fund, World
715 Food Programme, World Health Organization. The State of Food Security and Nutrition in the
716 World 2024 [Internet]. FAO; IFAD; UNICEF; WFP; WHO; 2024 [cited 2024 Sep 20].
717 Available from: <https://openknowledge.fao.org/handle/20.500.14283/cd1254en>
- 718 100. Hadley K, Wheat S, Rogers HH, Balakumar A, Gonzales-Pacheco D, Davis SS, et al.
719 Mechanisms underlying food insecurity in the aftermath of climate-related shocks: a
720 systematic review. *Lancet Planet Health.* 2023 Mar 1;7(3):e242–50.

- 721 101. Kheiry M, Farahmandnia H, Zarei M, Sahebi A. Nutritional status among earthquake
722 survivors: a systematic review and meta-analysis. *Public Health*. 2024 Feb;227:24–31.
- 723 102. Kinyoki DK, Moloney GM, Uthman OA, Kandala NB, Odundo EO, Noor AM, et al.
724 Conflict in Somalia: impact on child undernutrition. *BMJ Glob Health*. 2017 May
725 1;2(2):e000262.
- 726 103. Delbiso TD, Rodriguez-Llanes JM, Donneau AF, Speybroeck N, Guha-Sapir D. Drought,
727 conflict and children's undernutrition in Ethiopia 2000-2013: a meta-analysis. *Bull World*
728 *Health Organ*. 2017 Feb 1;95(2):94–102.
- 729 104. Balhara KS, Silvestri DM, Tyler Winders W, Selvam A, Kivlehan SM, Becker TK, et al.
730 Impact of nutrition interventions on pediatric mortality and nutrition outcomes in humanitarian
731 emergencies: A systematic review. *Trop Med Int Health*. 2017;22(12):1464–92.
- 732 105. Belesova K, Agabiirwe CN, Zou M, Phalkey R, Wilkinson P. Drought exposure as a risk
733 factor for child undernutrition in low- and middle-income countries: A systematic review and
734 assessment of empirical evidence. *Environ Int*. 2019 Oct 1;131:104973.
- 735 106. Xu R, Zhao Q, Coelho MSZS, Saldiva PHN, Abramson MJ, Li S, et al. The association
736 between heat exposure and hospitalization for undernutrition in Brazil during 2000–2015: A
737 nationwide case-crossover study. *PLOS Med*. 2019 Oct 29;16(10):e1002950.
- 738 107. Anttila-Hughes JK, Jina AS, McCord GC. ENSO impacts child undernutrition in the
739 global tropics. *Nat Commun*. 2021 Oct 12;12(1):5785.
- 740 108. Shaw S, Khan J, Paswan B. Spatial modeling of child malnutrition attributable to drought
741 in India. *Int J Public Health*. 2020 Apr 1;65(3):281–90.
- 742 109. Abimibayo Adeoya A, Sasaki H, Fuda M, Okamoto T, Egawa S. Child Nutrition in
743 Disaster: A Scoping Review. *Tohoku J Exp Med*. 2022;256(2):103–18.
- 744 110. Agabiirwe CN, Dambach P, Methula TC, Phalkey RK. Impact of floods on undernutrition
745 among children under five years of age in low- and middle-income countries: a systematic
746 review. *Environ Health*. 2022 Oct 24;21(1):98.
- 747 111. Tiwari I, Tilstra M, Campbell SM, Nielsen CC, Hodgins S, Vargas ARO, et al. Climate
748 change impacts on the health of South Asian children and women subpopulations - A

- 749 scoping review. *Heliyon* [Internet]. 2022 Oct 1 [cited 2024 Oct 24];8(10). Available from:
750 [https://www.cell.com/heliyon/abstract/S2405-8440\(22\)02099-0](https://www.cell.com/heliyon/abstract/S2405-8440(22)02099-0)
- 751 112. Pratiti R. An Ecological Approach to Disaster Mitigation: A Literature Review. *Cureus*
752 [Internet]. 2023 Sep 18 [cited 2024 Oct 24];15. Available from:
753 [https://www.cureus.com/articles/156318-an-ecological-approach-to-disaster-mitigation-a-](https://www.cureus.com/articles/156318-an-ecological-approach-to-disaster-mitigation-a-literature-review#!/)
754 [literature-review#!/](https://www.cureus.com/articles/156318-an-ecological-approach-to-disaster-mitigation-a-literature-review#!/)
- 755 113. Mueller V, Gray C. Heat and adult health in China. *Popul Environ*. 2018 Sep 1;40(1):1–
756 26.
- 757 114. Zhou J, Zhang L, Xuan P, Fan Y, Yang L, Hu C, et al. The relationship between famine
758 exposure during early life and body mass index in adulthood: A systematic review and meta-
759 analysis. *PLOS ONE*. 2018 Feb 6;13(2):e0192212.
- 760 115. Huang C, Li Z, Wang M, Martorell R. Early Life Exposure to the 1959–1961 Chinese
761 Famine Has Long-Term Health Consequences^{1,2}. *J Nutr*. 2010 Oct 1;140(10):1874–8.
- 762 116. Binns CW, Lee MK, Maycock B, Torheim LE, Nanishi K, Duong DTT. Climate Change,
763 Food Supply, and Dietary Guidelines. *Annu Rev Public Health*. 2021 Apr 1;42(Volume 42,
764 2021):233–55.
- 765 117. Chevance G, Fresán U, Hekler E, Edmondson D, Lloyd SJ, Ballester J, et al. Thinking
766 Health-related Behaviors in a Climate Change Context: A Narrative Review. *Ann Behav Med*.
767 2023 Mar 1;57(3):193–204.
- 768 118. Tchoukouang RD, Onyeaka H, Nkoutchou H. Assessing the vulnerability of food supply
769 chains to climate change-induced disruptions. *Sci Total Environ*. 2024 Apr 10;920:171047.
- 770 119. Jennings S, Challinor A, Smith P, Macdiarmid JI, Pope E, Chapman S, et al.
771 Stakeholder-driven transformative adaptation is needed for climate-smart nutrition security in
772 sub-Saharan Africa. *Nat Food*. 2024 Jan;5(1):37–47.
- 773 120. Kompas T, Che TN, Grafton RQ. Global impacts of heat and water stress on food
774 production and severe food insecurity. *Sci Rep*. 2024 Jun 22;14(1):14398.
- 775 121. Schmidhuber J, Tubiello FN. Global food security under climate change. *Proc Natl Acad*
776 *Sci*. 2007 Dec 11;104(50):19703–8.

- 777 122. Wheeler T, von Braun J. Climate Change Impacts on Global Food Security. *Science*.
778 2013 Aug 2;341(6145):508–13.
- 779 123. Bandara JS, Cai Y. The impact of climate change on food crop productivity, food prices
780 and food security in South Asia. *Econ Anal Policy*. 2014 Oct 1;44(4):451–65.
- 781 124. Agostoni C, Baglioni M, La Vecchia A, Molari G, Berti C. Interlinkages between Climate
782 Change and Food Systems: The Impact on Child Malnutrition—Narrative Review. *Nutrients*.
783 2023 Jan;15(2):416.
- 784 125. Swinburn BA, Kraak VI, Allender S, Atkins VJ, Baker PI, Bogard JR, et al. The Global
785 Syndemic of Obesity, Undernutrition, and Climate Change: The Lancet Commission report.
786 *The Lancet*. 2019 Feb 23;393(10173):791–846.
- 787 126. Rocque RJ, Beaudoin C, Ndjaboue R, Cameron L, Poirier-Bergeron L, Poulin-Rheault
788 RA, et al. Health effects of climate change: an overview of systematic reviews. *BMJ Open*.
789 2021 Jun 1;11(6):e046333.
- 790 127. An R, Ji M, Zhang S. Global warming and obesity: a systematic review. *Obes Rev*.
791 2018;19(2):150–63.
- 792 128. Venkat A, Marshak A, Young H, Naumova EN. Seasonality of Acute Malnutrition in
793 African Drylands: Evidence From 15 Years of SMART Surveys. *Food Nutr Bull*. 2023 Dec
794 1;44(2_suppl):S94–108.
- 795 129. Weeda LJZ, Bradshaw CJA, Judge MA, Saraswati CM, Le Souëf PN. How climate
796 change degrades child health: A systematic review and meta-analysis. *Sci Total Environ*.
797 2024 Apr 10;920:170944.
- 798 130. Mohamed J, Abdi MJ, Mohamed AI, Muhumed MA, Abdeeq BA, Abdi AA, et al.
799 Predicting the short and long term effects of food price inflation, armed conflicts, and climate
800 variability on global acute malnutrition in Somalia. *J Health Popul Nutr*. 2024 May
801 17;43(1):68.
- 802 131. Tapkigen J, Harding S, Pulkki J, Atkins S, Koivusalo M. Climate change-induced shifts in
803 the food systems and diet-related non-communicable diseases in sub-Saharan Africa: a
804 scoping review and a conceptual framework. *BMJ Open*. 2024 Jun 1;14(6):e080241.

- 805 132. Phalkey RK, Aranda-Jan C, Marx S, Höfle B, Sauerborn R. Systematic review of current
806 efforts to quantify the impacts of climate change on undernutrition. *Proc Natl Acad Sci*. 2015
807 Aug 18;112(33):E4522–9.
- 808 133. Lloyd SJ, Kovats RS, Chalabi Z. Climate Change, Crop Yields, and Undernutrition:
809 Development of a Model to Quantify the Impact of Climate Scenarios on Child Undernutrition.
810 *Environ Health Perspect*. 2011 Dec;119(12):1817–23.
- 811 134. Lloyd SJ, Bangalore M, Chalabi Z, Kovats RS, Hallegatte S, Rozenberg J, et al. A
812 Global-Level Model of the Potential Impacts of Climate Change on Child Stunting via Income
813 and Food Price in 2030. *Environ Health Perspect*. 2018 Sep;126(9):097007.
- 814 135. Lloyd SJ, Chalabi Z. Climate change, hunger and rural health through the lens of farming
815 styles: An agent-based model to assess the potential role of peasant farming. *PLOS ONE*.
816 2021 Feb 11;16(2):e0246788.
- 817 136. Fanzo J, Davis C, McLaren R, Choufani J. The effect of climate change across food
818 systems: Implications for nutrition outcomes. *Glob Food Secur*. 2018 Sep 1;18:12–9.
- 819 137. Springmann M, Wiebe K, Mason-D’Croz D, Sulser TB, Rayner M, Scarborough P.
820 Health and nutritional aspects of sustainable diet strategies and their association with
821 environmental impacts: a global modelling analysis with country-level detail. *Lancet Planet*
822 *Health*. 2018 Oct 1;2(10):e451–61.
- 823 138. Springmann M, Mason-D’Croz D, Robinson S, Garnett T, Godfray HCJ, Gollin D, et al.
824 Global and regional health effects of future food production under climate change: a
825 modelling study. *Lancet Lond Engl*. 2016 May 7;387(10031):1937–46.
- 826 139. Springmann M, Godfray HCJ, Rayner M, Scarborough P. Analysis and valuation of the
827 health and climate change cobenefits of dietary change. *Proc Natl Acad Sci*. 2016 Apr
828 12;113(15):4146–51.
- 829 140. World Health Organization WH. Quantitative risk assessment of the effects of climate
830 change on selected causes of death, 2030s and 2050s [Internet]. Geneva: World Health
831 Organization; 2014 [cited 2024 Sep 20]. Available from:
832 <https://iris.who.int/handle/10665/134014>

- 833 141. Nelson GC, Rosegrant MW, Palazzo A, Gray I, Ingersoll C, Robertson R, et al. Food
834 security, farming, and climate change to 2050: Scenarios, results, policy options. Res Rep
835 [Internet]. 2010 [cited 2024 Sep 20]; Available from:
836 <https://ideas.repec.org/p/fpr/resrep/geraldnelson.html>
- 837 142. Fischer G, Shah M, N. Tubiello F, van Velhuizen H. Socio-economic and climate change
838 impacts on agriculture: an integrated assessment, 1990–2080. Philos Trans R Soc B Biol Sci.
839 2005 Oct 24;360(1463):2067–83.
- 840 143. Darnton-Hill I, Cogill B. Maternal and Young Child Nutrition Adversely Affected by
841 External Shocks Such As Increasing Global Food Prices^{1,2}. J Nutr. 2010 Jan 1;140(1):162S-
842 169S.
- 843 144. Ebi KL. Adaptation costs for climate change-related cases of diarrhoeal disease,
844 malnutrition, and malaria in 2030. Glob Health. 2008 Sep 19;4(1):9.
- 845 145. Sorgho R, Franke J, Simboro S, Phalkey R, Saeurborn R. NUTRItion and CLIMate
846 (NUTRICLIM): investigating the relationship between climate variables and childhood
847 malnutrition through agriculture, an exploratory study in Burkina Faso. Public Health Rev.
848 2016 Oct 6;37(1):16.
- 849 146. Sulser TB, Beach RH, Wiebe KD, Dunston S, Fukagawa NK. Disability-adjusted life
850 years due to chronic and hidden hunger under food system evolution with climate change
851 and adaptation to 2050. Am J Clin Nutr. 2021 Aug 1;114(2):550–63.
- 852 147. Hassan M, Saif K, Ijaz MS, Sarfraz Z, Sarfraz A, Robles-Velasco K, et al. Mean
853 Temperature and Drought Projections in Central Africa: A Population-Based Study of Food
854 Insecurity, Childhood Malnutrition and Mortality, and Infectious Disease. Int J Environ Res
855 Public Health. 2023 Jan;20(3):2697.
- 856 148. Kovats S, Hales S, Campbell-Lendrum D, Rocklov J, Honda Y, Lloyd S. Global Risk
857 Assessment Of The Effect Of Climate Change On Selected Causes Of Death In 2030s And
858 2050s. ISEE Conf Abstr. 2015 Aug 20;2015(1):1204.
- 859 149. N. Naumova E. Forecasting Seasonal Acute Malnutrition: Setting the Framework. Food
860 Nutr Bull. 2023 Dec 1;44(2_suppl):S83–93.

- 861 150. Estivaleti JM, Guzman-Habinger J, Lobos J, Azeredo CM, Claro R, Ferrari G, et al. Time
862 trends and projected obesity epidemic in Brazilian adults between 2006 and 2030. *Sci Rep.*
863 2022 Jul 26;12(1):12699.
- 864 151. Hughes BB, Kuhn R, Peterson CM, Rothman DS, Solórzano JR, Mathers CD, et al.
865 Projections of global health outcomes from 2005 to 2060 using the International Futures
866 integrated forecasting model. *Bull World Health Organ.* 2011 Jul;89:478–86.
- 867 152. Vollset SE, Ababneh HS, Abate YH, Abbafati C, Abbasgholizadeh R, Abbasian M, et al.
868 Burden of disease scenarios for 204 countries and territories, 2022–2050: a forecasting
869 analysis for the Global Burden of Disease Study 2021. *The Lancet.* 2024 May
870 18;403(10440):2204–56.
- 871 153. Hasegawa T, Fujimori S, Takahashi K, Yokohata T, Masui T. Economic implications of
872 climate change impacts on human health through undernourishment. *Clim Change.* 2016
873 May 1;136(2):189–202.
- 874 154. Bhargava A, Bhargava M, Beneditti A, Kurpad A. Attributable is preventable: Corrected
875 and revised estimates of population attributable fraction of TB related to undernutrition in 30
876 high TB burden countries. *J Clin Tuberc Mycobact Dis.* 2022 May 1;27:100309.
- 877 155. Lönnroth K, Williams BG, Cegielski P, Dye C. A consistent log-linear relationship
878 between tuberculosis incidence and body mass index. *Int J Epidemiol.* 2010 Feb;39(1):149–
879 55.
- 880 156. Saunders MJ, Cegielski JP, Clark R, Houben RMGJ, McQuaid F. Tuberculosis Incidence
881 and Body Mass Index – An Updated Systematic Literature Review and Global Analysis
882 [Internet]. Rochester, NY: Social Science Research Network; 2024 [cited 2024 Dec 4].
883 Available from: <https://papers.ssrn.com/abstract=5032687>
- 884 157. Girma D, Abita Z, Shifera N, Arage MW, Abate BB, Alie MS, et al. Incidence rate of
885 tuberculosis among HIV infected children in Ethiopia: systematic review and meta-analysis.
886 *BMC Pediatr.* 2024 May 24;24(1):363.
- 887 158. Mera HB, Wagnew F, Akelew Y, Hibstu Z, Berihun S, Tamir W, et al. Prevalence and
888 Predictors of Pulmonary Tuberculosis among Prison Inmates in Sub-Saharan Africa: A
889 Systematic Review and Meta-Analysis. *Tuberc Res Treat.* 2023;2023(1):6226200.

- 890 159. Wondmeneh TG, Mekonnen AT. The incidence rate of tuberculosis and its associated
891 factors among HIV-positive persons in Sub-Saharan Africa: a systematic review and meta-
892 analysis. *BMC Infect Dis.* 2023 Sep 18;23(1):613.
- 893 160. Franco JV, Bongaerts B, Metzendorf MI, Risso A, Guo Y, Peña Silva L, et al.
894 Undernutrition as a risk factor for tuberculosis disease. *Cochrane Database Syst Rev.* 2024
895 Jun 11;6(6):CD015890.
- 896 161. Bhargava A, Bhargava M, Meher A, Benedetti A, Velayutham B, Teja GS, et al.
897 Nutritional supplementation to prevent tuberculosis incidence in household contacts of
898 patients with pulmonary tuberculosis in India (RATIONS): a field-based, open-label, cluster-
899 randomised, controlled trial. *The Lancet.* 2023 Aug 19;402(10402):627–40.
- 900 162. Oxlade O, Huang CC, Murray M. Estimating the Impact of Reducing Under-Nutrition on
901 the Tuberculosis Epidemic in the Central Eastern States of India: A Dynamic Modeling Study.
902 *PLOS ONE.* 2015 Jun 5;10(6):e0128187.
- 903 163. Mandal S, Bhatia V, Bhargava A, Rijal S, Arinaminpathy N. The potential impact on
904 tuberculosis of interventions to reduce undernutrition in the WHO South-East Asian Region: a
905 modelling analysis. *Lancet Reg Health - Southeast Asia.* 2024 May 16;100423.
- 906 164. McQuaid F, Clark R, White RG, Bakker R, Alexander P, Henry R, et al. Estimating the
907 Epidemiological and Economic Impact of Providing Nutritional Care for Tuberculosis-Affected
908 Households Across India. *Lancet Glob Health [Internet].* 2024 Jul 24; Available from:
909 [https://www.thelancet.com/journals/langlo/article/PIIS2214-109X\(24\)00505-9/fulltext](https://www.thelancet.com/journals/langlo/article/PIIS2214-109X(24)00505-9/fulltext)
- 910 165. Bhargava A, Shewade HD. The potential impact of the COVID-19 response related
911 lockdown on TB incidence and mortality in India. *Indian J Tuberc.* 2020 Dec 1;67(4,
912 Supplement):S139–46.
- 913 166. Waitt CJ, Squire SB. A systematic review of risk factors for death in adults during and
914 after tuberculosis treatment. *Int J Tuberc Lung Dis Off J Int Union Tuberc Lung Dis.* 2011
915 Jul;15(7):871–85.
- 916 167. Wagnew F, Gray D, Tsheten T, Kelly M, Clements ACA, Alene KA. Effectiveness of
917 nutritional support to improve treatment adherence in patients with tuberculosis: a systematic
918 review. *Nutr Rev.* 2024 Sep 1;82(9):1216–25.

- 919 168. Wagnew F, Alene KA, Kelly M, Gray D. Undernutrition increases the risk of unsuccessful
920 treatment outcomes of patients with tuberculosis in Ethiopia: A multicenter retrospective
921 cohort study. *J Infect [Internet]*. 2024 Jul 1 [cited 2024 Sep 20];89(1). Available from:
922 [https://www.journalofinfection.com/article/S0163-4453\(24\)00109-9/fulltext#](https://www.journalofinfection.com/article/S0163-4453(24)00109-9/fulltext#)
- 923 169. Sinha P, Ponnuraja C, Gupte N, Prakash Babu S, Cox SR, Sarkar S, et al. Impact of
924 Undernutrition on Tuberculosis Treatment Outcomes in India: A Multicenter, Prospective,
925 Cohort Analysis. *Clin Infect Dis Off Publ Infect Dis Soc Am*. 2023 Apr 17;76(8):1483–91.
- 926 170. Bhargava A, Bhargava M, Meher A, Teja GS, Velayutham B, Watson B, et al. Nutritional
927 support for adult patients with microbiologically confirmed pulmonary tuberculosis: outcomes
928 in a programmatic cohort nested within the RATIONS trial in Jharkhand, India. *Lancet Glob
929 Health*. 2023 Sep 1;11(9):e1402–11.
- 930 171. World Economic Forum [Internet]. [cited 2025 Jan 10]. Quantifying the Impact of Climate
931 Change on Human Health. Available from: [https://www.weforum.org/publications/quantifying-
932 the-impact-of-climate-change-on-human-health/](https://www.weforum.org/publications/quantifying-the-impact-of-climate-change-on-human-health/)
- 933 172. World Health Organization. WHO guidance for climate resilient and environmentally
934 sustainable health care facilities. Geneva; 2022.
- 935 173. Operational framework for building climate resilient and low carbon health systems
936 [Internet]. Geneva; [cited 2024 Sep 20]. Available from:
937 <https://www.who.int/publications/i/item/9789240081888>
- 938 174. Naser K, Haq Z, Naughton BD. The Impact of Climate Change on Health Services in
939 Low- and Middle-Income Countries: A Systematised Review and Thematic Analysis. *Int J
940 Environ Res Public Health*. 2024 Apr;21(4):434.
- 941 175. Codjoe SNA, Gough KV, Wilby RL, Kasei R, Yankson PWK, Amankwaa EF, et al.
942 Impact of extreme weather conditions on healthcare provision in urban Ghana. *Soc Sci Med*.
943 2020 Aug 1;258:113072.
- 944 176. Ebi KL, Vanos J, Baldwin JW, Bell JE, Hondula DM, Errett NA, et al. Extreme Weather
945 and Climate Change: Population Health and Health System Implications. *Annu Rev Public
946 Health*. 2021 Apr 1;42(Volume 42, 2021):293–315.

- 947 177. Theron E, Bills CB, Calvello Hynes EJ, Stassen W, Rublee C. Climate change and
948 emergency care in Africa: A scoping review. *Afr J Emerg Med*. 2022 Jun 1;12(2):121–8.
- 949 178. Hierink F, Rodrigues N, Muñiz M, Panciera R, Ray N. Modelling geographical
950 accessibility to support disaster response and rehabilitation of a healthcare system: an
951 impact analysis of Cyclones Idai and Kenneth in Mozambique. *BMJ Open*. 2020 Nov
952 1;10(11):e039138.
- 953 179. Dagnino F, Qian Z, Beatrici E. Assessing the ripple effects of natural disasters on
954 healthcare systems: a narrative review. *Curr Opin Urol*. 2024 Sep;34(5):371.
- 955 180. Sahota H, Guzman S, Tordera L, Chan M, Cocohoba J, Saberi P. Pharmacy Deserts
956 and Pharmacies' Roles Post-Extreme Weather and Climate Events in the United States: A
957 Scoping Review. *J Prim Care Community Health*. 2023 Jan 1;14:21501319231186497.
- 958 181. Zurynski Y, Fisher G, Wijekulasuriya S, Leask E, Dharmayani PNA, Ellis LA, et al.
959 Bolstering health systems to cope with the impacts of climate change events: A review of the
960 evidence on workforce planning, upskilling, and capacity building. *Int J Health Plann Manage*.
961 2024;39(3):781–805.
- 962 182. Farah B, Pavlova M, Groot W. Hospital disaster preparedness in sub-Saharan Africa: a
963 systematic review of English literature. *BMC Emerg Med*. 2023 Jun 26;23(1):71.
- 964 183. Ginex P, Dickman E, Elia MR, Burbage D, Wilson R, Koos JA, et al. Climate disasters
965 and oncology care: a systematic review of effects on patients, healthcare professionals, and
966 health systems. *Support Care Cancer*. 2023 Jun 20;31(7):403.
- 967 184. Gorji HA, Jafari H, Heidari M, Seifi B. Cancer Patients During and after Natural and Man-
968 Made Disasters: A Systematic Review. *Asian Pac J Cancer Prev*. 2018 Oct 1;19(10):2695–
969 700.
- 970 185. Man RXG, Lack DA, Wyatt CE, Murray V. The effect of natural disasters on cancer care:
971 a systematic review. *Lancet Oncol*. 2018 Sep 1;19(9):e482–99.
- 972 186. Pappas A, Kovats S, Ranganathan M. Extreme weather events and maternal health in
973 low-income and middle-income countries: a scoping review. *BMJ Open*. 2024 Jun
974 1;14(6):e079361.

- 975 187. Begum A, Hamid SA. Maternal healthcare utilization in rural Bangladesh: A comparative
976 analysis between high and low disaster-prone areas. *PLOS Glob Public Health*. 2023 Jul
977 31;3(7):e0001409.
- 978 188. Haque MR, Parr N, Muhidin S. The effects of household's climate-related displacement
979 on delivery and postnatal care service utilization in rural Bangladesh. *Soc Sci Med*. 2020 Feb
980 1;247:112819.
- 981 189. Macinko J, Firmo JOA, Nascimento-Souza MA, Mambrini JV de M, Peixoto SV.
982 Healthcare access, utilization, and quality after a disaster: results from the Brumadinho
983 Health Project. *Rev Bras Epidemiol*. 2022 Oct 28;25:e220005.
- 984 190. Uddin J, Mazur RE. Socioeconomic factors differentiating healthcare utilization of
985 cyclone survivors in rural Bangladesh: a case study of cyclone Sidr. *Health Policy Plan*. 2015
986 Jul 1;30(6):782–90.
- 987 191. Toloo G (Sam), Hu W, FitzGerald G, Aitken P, Tong S. Projecting excess emergency
988 department visits and associated costs in Brisbane, Australia, under population growth and
989 climate change scenarios. *Sci Rep*. 2015 Aug 6;5(1):12860.
- 990 192. Recio RS, Pablo Alonso Pérez De Ágredda J, José Rabanaque M, Aguilar Palacio I.
991 Understanding the Effect of Economic Recession on Healthcare Services: A Systematic
992 Review. *Iran J Public Health*. 2022 Mar;51(3):495–507.
- 993 193. Trajman A, Felker I, Alves LC, Coutinho I, Osman M, Meehan SA, et al. The COVID-19
994 and TB syndemic: the way forward. *Int J Tuberc Lung Dis*. 2022 Aug 1;26(8):710–9.
- 995 194. Migliori GB, Thong PM, Alffenaar JW, Denholm J, Tadolini M, Alyaquobi F, et al.
996 Gauging the impact of the COVID-19 pandemic on tuberculosis services: a global study. *Eur*
997 *Respir J* [Internet]. 2021 Nov 1 [cited 2024 Sep 20];58(5). Available from:
998 <https://erj.ersjournals.com/content/58/5/2101786>
- 999 195. Zimmer AJ, Klinton JS, Oga-Omenka C, Heitkamp P, Nyirenda CN, Furin J, et al.
1000 Tuberculosis in times of COVID-19. *J Epidemiol Community Health*. 2022 Mar 1;76(3):310–6.
- 1001 196. Dheda K, Perumal T, Moultrie H, Perumal R, Esmail A, Scott AJ, et al. The intersecting
1002 pandemics of tuberculosis and COVID-19: population-level and patient-level impact, clinical

- 1003 presentation, and corrective interventions. *Lancet Respir Med*. 2022 Jun 1;10(6):603–22.
- 1004 197. McQuaid CF, Vassall A, Cohen T, Fiekert K, White RG. The impact of COVID-19 on TB:
1005 a review of the data. *Int J Tuberc Lung Dis Off J Int Union Tuberc Lung Dis*. 2021 Jun
1006 1;25(6):436–46.
- 1007 198. Gunsaru V, Henrion MYR, McQuaid CF. The impact of the COVID-19 pandemic on
1008 tuberculosis treatment outcomes in 49 high burden countries. *BMC Med*. 2024 Jul
1009 29;22(1):312.
- 1010 199. Marco MH, Ahmedov S, Castro KG. The global impact of COVID-19 on tuberculosis: A
1011 thematic scoping review, 2020-2023. *PLOS Glob Public Health*. 2024;4(7):e0003043.
- 1012 200. Ledesma JR, Basting A, Chu HT, Ma J, Zhang M, Vongpradith A, et al. Global-,
1013 Regional-, and National-Level Impacts of the COVID-19 Pandemic on Tuberculosis
1014 Diagnoses, 2020–2021. *Microorganisms*. 2023 Sep;11(9):2191.
- 1015 201. Cilloni L, Fu H, Vesga JF, Dowdy D, Pretorius C, Ahmedov S, et al. The potential impact
1016 of the COVID-19 pandemic on the tuberculosis epidemic a modelling analysis.
1017 *eClinicalMedicine* [Internet]. 2020 Nov 1 [cited 2024 Sep 20];28. Available from:
1018 [https://www.thelancet.com/journals/eclinm/article/PIIS2589-5370\(20\)30347-3/fulltext](https://www.thelancet.com/journals/eclinm/article/PIIS2589-5370(20)30347-3/fulltext)
- 1019 202. Martin-Hughes R, Vu L, Cheikh N, Kelly SL, Fraser-Hurt N, Shubber Z, et al. Impacts of
1020 COVID-19-related service disruptions on TB incidence and deaths in Indonesia, Kyrgyzstan,
1021 Malawi, Mozambique, and Peru: Implications for national TB responses. *PLOS Glob Public*
1022 *Health*. 2022 Mar 30;2(3):e0000219.
- 1023 203. Tovar M, Aleta A, Sanz J, Moreno Y. Modeling the impact of COVID-19 on future
1024 tuberculosis burden. *Commun Med*. 2022 Jun 29;2(1):1–10.
- 1025 204. McQuaid CF, McCreesh N, Read JM, Sumner T, Houben RMGJ, White RG, et al. The
1026 potential impact of COVID-19-related disruption on tuberculosis burden. *Eur Respir J*
1027 [Internet]. 2020 Jan 1 [cited 2024 Sep 20]; Available from:
1028 <https://erj.ersjournals.com/content/early/2020/06/04/13993003.01718-2020>
- 1029 205. Hogan AB, Jewell BL, Sherrard-Smith E, Vesga JF, Watson OJ, Whittaker C, et al.
1030 Potential impact of the COVID-19 pandemic on HIV, tuberculosis, and malaria in low-income

- 1031 and middle-income countries: a modelling study. *Lancet Glob Health*. 2020 Sep
1032 1;8(9):e11132–41.
- 1033 206. Arinaminpathy N, Mukadi YD, Bloom A, Vincent C, Ahmedov S. Meeting the 2030 END
1034 TB goals in the wake of COVID-19: A modelling study of countries in the USAID TB portfolio.
1035 *PLOS Glob Public Health*. 2023 Oct 23;3(10):e0001271.
- 1036 207. Gray KL, Walker NF, Martineau F, Bhadelia N, Harmon-Gray W mai, Skrip LA, et al.
1037 Interruption of tuberculosis detection and care during the Ebola virus disease epidemic
1038 (2014–2015) in Liberia: time-series analyses for 2013–2017. *Int J Infect Dis*. 2021 Nov
1039 1;112:13–20.
- 1040 208. The Paris Agreement - Publication | UNFCCC [Internet]. [cited 2025 Jan 27]. Available
1041 from: <https://unfccc.int/documents/184656>
- 1042 209. Sendai Framework for Disaster Risk Reduction 2015-2030 | UNDRR [Internet]. 2015
1043 [cited 2025 Jan 27]. Available from: [https://www.undrr.org/publication/sendai-framework-](https://www.undrr.org/publication/sendai-framework-disaster-risk-reduction-2015-2030)
1044 [disaster-risk-reduction-2015-2030](https://www.undrr.org/publication/sendai-framework-disaster-risk-reduction-2015-2030)
- 1045 210. Transforming our world: the 2030 Agenda for Sustainable Development | Department of
1046 Economic and Social Affairs [Internet]. [cited 2025 Jan 27]. Available from:
1047 <https://sdgs.un.org/2030agenda>
- 1048 211. Refugees and Migrants [Internet]. 2017 [cited 2025 Jan 27]. Global compact for
1049 migration. Available from: <https://refugeesmigrants.un.org/migration-compact>
- 1050 212. UNHCR UK [Internet]. [cited 2025 Jan 27]. The Global Compact on Refugees. Available
1051 from: <https://www.unhcr.org/uk/about-unhcr/who-we-are/global-compact-refugees>
- 1052 213. World Health Organization. Billions of people still breathe unhealthy air: new WHO data
1053 [Internet]. [cited 2024 Sep 20]. Available from: [https://www.who.int/news/item/04-04-2022-](https://www.who.int/news/item/04-04-2022-billions-of-people-still-breathe-unhealthy-air-new-who-data)
1054 [billions-of-people-still-breathe-unhealthy-air-new-who-data](https://www.who.int/news/item/04-04-2022-billions-of-people-still-breathe-unhealthy-air-new-who-data)
- 1055 214. Obore N, Kawuki J, Guan J, Papabathini SS, Wang L. Association between indoor air
1056 pollution, tobacco smoke and tuberculosis: an updated systematic review and meta-analysis.
1057 *Public Health*. 2020 Oct;187:24–35.
- 1058 215. Dimala CA, Kadia BM. A systematic review and meta-analysis on the association

- 1059 between ambient air pollution and pulmonary tuberculosis. *Sci Rep.* 2022 Jul 4;12(1):11282.
- 1060 216. Pinho-Gomes AC, Roaf E, Fuller G, Fowler D, Lewis A, ApSimon H, et al. Air pollution
1061 and climate change. *Lancet Planet Health.* 2023 Sep 1;7(9):e727–8.
- 1062 217. Jacob DJ, Winner DA. Effect of climate change on air quality. *Atmos Environ.* 2009 Jan
1063 1;43(1):51–63.
- 1064 218. Climate impacts of air pollution [Internet]. [cited 2024 Nov 28]. Available from:
1065 [https://www.who.int/teams/environment-climate-change-and-health/air-quality-energy-and-](https://www.who.int/teams/environment-climate-change-and-health/air-quality-energy-and-health/health-impacts/climate-impacts-of-air-pollution)
1066 [health/health-impacts/climate-impacts-of-air-pollution](https://www.who.int/teams/environment-climate-change-and-health/air-quality-energy-and-health/health-impacts/climate-impacts-of-air-pollution)
- 1067 219. Xiao Y, He L, Chen Y, Wang Q, Meng Q, Chang W, et al. The influence of
1068 meteorological factors on tuberculosis incidence in Southwest China from 2006 to 2015. *Sci*
1069 *Rep.* 2018 Jul 3;8:10053.
- 1070 220. Wang Y, Xue C, Xue B, Zhang B, Xu C, Ren J, et al. Long- and short-run asymmetric
1071 impacts of climate variation on tuberculosis based on a time series study. *Sci Rep.* 2024 Oct
1072 9;14(1):23565.
- 1073 221. Chen YP, Liu LF, Che Y, Huang J, Li GX, Sang GX, et al. Modeling and Predicting
1074 Pulmonary Tuberculosis Incidence and Its Association with Air Pollution and Meteorological
1075 Factors Using an ARIMAX Model: An Ecological Study in Ningbo of China. *Int J Environ Res*
1076 *Public Health.* 2022 Apr 28;19(9):5385.
- 1077 222. Xu M, Li Y, Liu B, Chen R, Sheng L, Yan S, et al. Temperature and humidity associated
1078 with increases in tuberculosis notifications: a time-series study in Hong Kong. *Epidemiol*
1079 *Infect.* 2020 Dec 28;149:e8.
- 1080 223. Wagatsuma K. Association of ambient temperature with tuberculosis incidence in Japan:
1081 An ecological study. *IJID Reg.* 2024 Sep 1;12:100384.
- 1082 224. Chang M, Emam M, Chen X, Lu D, Zhang L, Zheng Y. An investigation of the effects of
1083 meteorological factors on the incidence of tuberculosis. *Sci Rep.* 2024 Jan 24;14(1):2088.
- 1084 225. Wu Q, Wang W, Liu K, Zhang Y, Chen B, Chen SH. Effects of meteorological factors on
1085 tuberculosis and potential modifiers in Zhejiang Province, China. *Sci Rep.* 2024 Oct
1086 25;14(1):25430.

- 1087 226. Li Z, Liu Q, Zhan M, Tao B, Wang J, Lu W. Meteorological factors contribute to the risk
1088 of pulmonary tuberculosis: A multicenter study in eastern China. *Sci Total Environ.* 2021 Nov
1089 1;793:148621.
- 1090 227. Rao HX, Zhang X, Zhao L, Yu J, Ren W, Zhang XL, et al. Spatial transmission and
1091 meteorological determinants of tuberculosis incidence in Qinghai Province, China: a spatial
1092 clustering panel analysis. *Infect Dis Poverty.* 2016 Jun 2;5(1):45.
- 1093 228. Chen D, Lu H, Zhang S, Yin J, Liu X, Zhang Y, et al. The association between extreme
1094 temperature and pulmonary tuberculosis in Shandong Province, China, 2005–2016: a mixed
1095 method evaluation. *BMC Infect Dis.* 2021 May 1;21(1):402.
- 1096 229. Qin T, Hao Y, Wu Y, Chen X, Zhang S, Wang M, et al. Association between averaged
1097 meteorological factors and tuberculosis risk: A systematic review and meta-analysis. *Environ*
1098 *Res.* 2022 Sep 1;212:113279.
- 1099 230. Liyew AM, Clements ACA, Akalu TY, Gilmour B, Alene KA. Ecological-level factors
1100 associated with tuberculosis incidence and mortality: A systematic review and meta-analysis.
1101 *PLOS Glob Public Health.* 2024;4(10):e0003425.
- 1102 231. Magnano San Lio R, Favara G, Maugeri A, Barchitta M, Agodi A. How Antimicrobial
1103 Resistance Is Linked to Climate Change: An Overview of Two Intertwined Global Challenges.
1104 *Int J Environ Res Public Health.* 2023 Jan;20(3):1681.
- 1105 232. Andrews JR, Cobelens F, Horsburgh CR, Hatherill M, Basu S, Hermans S, et al.
1106 Seasonal drivers of tuberculosis: evidence from over 100 years of notifications in Cape Town.
1107 *Int J Tuberc Lung Dis Off J Int Union Tuberc Lung Dis.* 2020 May 1;24(5):477–84.
- 1108 233. Wingfield T, Schumacher SG, Sandhu G, Tovar MA, Zevallos K, Baldwin MR, et al. The
1109 seasonality of tuberculosis, sunlight, vitamin D, and household crowding. *J Infect Dis.* 2014
1110 Sep 1;210(5):774–83.
- 1111 234. Kirolos A, Thindwa D, Khundi M, Burke RM, Henrion MYR, Nakamura I, et al.
1112 Tuberculosis case notifications in Malawi have strong seasonal and weather-related trends.
1113 *Sci Rep.* 2021 Feb 25;11(1):4621.
- 1114 235. Tedijanto C, Hermans S, Cobelens F, Wood R, Andrews JR. Drivers of seasonal

1115 variation in tuberculosis incidence: insights from a systematic review and mathematical
1116 model. *Epidemiol Camb Mass*. 2018 Nov;29(6):857–66.

1117

1118 Figures and tables

1119 **Table 1.** Examples of prioritised climate/health links.

Climate/health link	Postulated principle climate factors	Postulated structural/ environmental determinant pathway of influence	Postulated social/ health determinant pathway of influence	Primary postulated consequence for TB
Migration and displacement	Changing temperature and rainfall, extreme weather events, sea level rise and warming oceans	Poverty and inequality, resource crises, humanitarian crises, conflict and violence, ecosystem change, land degradation and availability	Changing social contact and living conditions	Increased risk of TB infection, via increased exposure and susceptibility
Food and water insecurity	Changing temperature and rainfall, extreme weather events, sea level rise and warming oceans	Poverty and inequality, resource crises, humanitarian crises, conflict and violence, ecosystem change, land degradation and availability	Changing nutritional status	Increased risk of TB disease, via increased likelihood of TB progression
Health system disruptions	Extreme weather events	Humanitarian crises, conflict and violence	Changing access to TB services	Poorer outcomes, via increased vulnerability to TB and reduced diagnosis and

				care
--	--	--	--	------

1120

1121 **Table 2.** Example research domains and questions to more effectively and comprehensively
 1122 characterise the effects of climate change on TB, and how to mitigate these effects and adapt
 1123 and build resilience to them.

Research domain	Specific example questions
<p><i>Climate change and TB</i></p> <p>No evidence exists directly linking climate change to TB. There is an urgent need to generate such evidence, as well as to identify prioritised adaptation and mitigation measures for climate-resilient TB services with a minimal environmental footprint.</p>	Are the effects of climate change on TB likely to be similar in high and low burden settings, and to what extent could climate change impact the global epidemiology and distribution of TB (e.g. could the effects change a country from a low burden to a high burden setting?)
	How do the effects of climate change on TB vary among different population groups (e.g. by gender, or people in extreme poverty)?
	Which other climate/health links (e.g. air quality and extreme heat) might have significant causal effects on TB, beyond those currently explored?
	How does the environmental footprint of TB prevention and care (e.g. diagnostics and the treatment process) contribute to climate change, and what sustainable practices can be introduced to minimize this impact?
	What adaptation and mitigation measures (e.g., improved housing, social protection, resilient healthcare systems) should be prioritized to build climate-resilient TB services, particularly in resource-constrained settings?
<p><i>Climate change, migration and displacement, and TB infection</i></p> <p>Evidence linking climate change to migration and displacement has focused on population movement in</p>	Do existing theoretical and operational frameworks adequately capture the complex, multifaceted effects of climate change on migration, including acute displacement and longer-term population shifts?
	How will overcrowding, poor living conditions and increasing urbanization driven by climate change affect TB transmission

<p>the longer term, particularly due to sea level rise, with less evidence on when this is likely to lead to overcrowding, increases in urbanization, or poorer living conditions.</p> <p>Evidence linking migration and displacement to TB infection has focused on TB disease among migrants in low-burden settings, with limited data on how infection risk changes and the effect on refugees, asylum seekers, and internally displaced people.</p>	<p>risks and health outcomes (including mental health) in displaced populations?</p>
	<p>What are the barriers to healthcare access for displaced populations affected by climate change, and how do these barriers influence TB detection, treatment adherence, and outcomes?</p>
	<p>What social and economic determinants related to climate change and displacement (e.g., unemployment, poverty, food insecurity) most strongly influence TB risk in displaced populations?</p>
	<p>How does migration type and experience (e.g. internal displacement or asylum seeker etc.) alter transmission dynamics, risk of exposure, and health outcomes?</p>
<p><i>Climate change, food and water insecurity, and TB disease</i></p> <p>Evidence linking climate change to food and water insecurity has focused on children and the overweight, particularly due to changing food availability and diets, with more limited data on undernutrition in adults and the effects of extreme weather events and acute nutritional shocks.</p> <p>Evidence linking food and water insecurity to TB disease has focused on BMI as an indicator, with more limited data from high TB burden settings, in populations with a</p>	<p>Can studies quantify the effect of different forms of climate-induced migration and displacement on TB transmission risk, particularly in high-burden and climate-vulnerable areas?</p>
	<p>How will the growing frequency and intensity of extreme weather events and their effects on food and water insecurity subsequently affect susceptibility to TB infection, disease progression and TB outcomes, and what are the most effective forms of nutritional support and anthropometric markers to deploy in these settings, both in the short and long term?</p>
	<p>How does the relationship between BMI and TB incidence vary across different populations, including children and older people and those with comorbidities such as HIV infection, alcohol use disorders, or end-stage renal disease; and does the type of weight loss (acute vs. chronic) or BMI distribution in a setting influence TB risk, even in the absence of malnutrition?</p>
	<p>Can additional nutritional indicators—such as hemoglobin levels, body composition (via bioelectrical impedance</p>

<p>particularly high prevalence of severe underweight, for children and adolescents, or for other nutritional indicators.</p>	<p>analysis), point-of-care micronutrient testing, and measures of dietary diversity and quality—offer more precise evidence of vulnerability to TB disease, beyond BMI alone, and what are the most appropriate nutritional metrics for different contexts?</p>
	<p>Can models quantify the added impact of increased food and water insecurity driven by climate change on people vulnerable to TB?</p>
<p><i>Climate change, health system disruptions, and TB outcomes</i></p> <p>Evidence linking climate change to health system disruptions has focused on extreme weather events and service delivery/access, with little evidence on more gradual disturbances from repeated shocks or climate-driven economic slowdowns, or the effect on supply chain disruptions, infrastructure, energy, and sanitation.</p> <p>Evidence linking health system disruptions to TB outcomes has focused on the COVID-19 pandemic and case notification, with limited evidence from other forms of disruptions, or for a wider range of health and socio-economic outcomes.</p>	<p>How will factors beyond extreme weather events, such as prolonged economic crises or extreme heat, contribute to health system disruptions, and how will these affect TB service delivery?</p>
	<p>In what ways will climate change impact essential health service functions (e.g., supply chains, infrastructure, energy availability, health workforce, sanitation) critical to effective TB response?</p>
	<p>What are the long-term consequences of health system disruptions caused by climate change on TB-related health outcomes, including the risks of chronic lung damage, the acquisition of drug-resistant TB strains, and financial burden on affected populations?</p>
	<p>Can experience from previous disruptions be used to quantify the effects of acute climate events (e.g., floods, droughts) on TB outcomes as a result of disrupted service delivery, including disruptions to TB diagnostics, supply chains, and treatment delivery?</p>

1124

1125 **Table 3.** Examples of cross-sectoral intervention entry points.

Climate/health link	Examples of interventions	Potential sectors involved in intervention
Migration and displacement	Migration-sensitive TB screening programmes; infection control and prevention measures; housing programmes; equitable and affordable access to	Health, migration, housing/social protection

	health care services	
Food and water insecurity	Sustainable agriculture and water resource management interventions; strengthened food supply chains to ensure accessibility and affordability; social protection programs targeting vulnerable populations; cash and in-kind transfers; targeted nutritional interventions to address malnutrition and micronutrient deficiencies;	Health, agriculture, finance/social protection
Health system disruptions	Health system and supply chain strengthening; mobile care and digital health systems ensuring continuity of TB services and treatment support; decentralisation of care and training health professionals to manage climate-sensitive health challenges	Health, environment
Planning and coordination in countries most affected by TB	Integration of TB prevention and care into national plans of action for climate mitigation and adaptation; participation of people affected by TB, particularly those most vulnerable to climate impacts, in policy-making processes related to climate mitigation and adaptation	Health

1126
1127 **Figure 1.** Comparison of TB burden and vulnerability to climate change across 215 countries
1128 and territories for different indices. A higher index value represents a poorer performance,
1129 where indices include (a) INFORM, measuring the risk of humanitarian crises that could require
1130 international assistance, (b) World Risk Index, assessing the risk of humanitarian disaster
1131 caused by extreme natural events and the negative effects of climate change, and (c) ND-GAIN,
1132 combining both readiness and vulnerability to climate change. Colors indicate World Health
1133 Organization regions; blue= African Region, light green= Region of the Americas, dark green=
1134 Eastern Mediterranean Region, yellow= European Region, orange= South-East Asian Region,
1135 gray= Western Pacific Region. ISO3 codes indicate the top 10 TB burden countries by number
1136 of incident TB cases.
1137

1138 **Figure 2.** (a) Analytical framework linking climate change to consequences for TB via a range of
1139 climate/health links. Example climate/health links considered here include (b) migration and
1140 displacement, (c) food and water insecurity, and (d) health system disruptions. Blue arrows
1141 indicate pathways included in literature reviews.
1142

Panel 1. Air pollution

Air pollution is an important climate/health link that is not reviewed in detail in this document but may have particular relevance for respiratory diseases such as TB.

Nearly the entire global population breathes air that contains pollutants exceeding the levels recommended by WHO guidelines(213). These pollutants, including particulate matter (PM2.5 and PM10) and sulphur dioxide, are a known cause of major cardiovascular and respiratory diseases, including cancer. Because they also impair lung defence mechanisms and may modulate the immune response, chronic exposure to these pollutants may increase susceptibility to TB infection, progression to TB disease, and risk of adverse TB outcomes. Indeed, the association between exposure to *household* (indoor) air pollution (from burning solid fuels for heating or cooking) and TB incidence has been established for some time(214). For *ambient* (outdoor) air pollution, a recent systematic review demonstrated an association with increased TB incidence(215), but not with hospital admission or mortality, and highlighted the low availability and quality of evidence. Further research is therefore required in this area, including research to establish the exact causal pathways (i.e. whether air pollution increases susceptibility to TB infection, progression to TB disease, or both).

Importantly, ambient air pollution and climate change are strongly interconnected. Many of the causes are the same, principally the burning of fossil fuels and deforestation/agricultural practices, and there are also multiple feedback loops(216). Drier and hotter conditions can increase ambient air pollution directly through increased photochemical production and air stagnation events, and indirectly through wildfires(217). Many air pollutants (especially black carbon) directly contribute to global warming by absorbing solar radiation and trapping heat in the atmosphere(218). Climate change may also increase exposure to household air pollution if extreme heat or weather drives people to spend long periods indoors. These interconnections mean that interventions to address either air pollution or climate change will generally, although not universally, have beneficial effects on the other.

1143

Panel 2. Meteorological factors

The associations between specific, measurable meteorological factors such as temperature, humidity, and precipitation and TB have been the subject of some research, primarily in Asia, and these factors have been proposed as potential indicators that could be used to predict future changes in TB incidence(219–221). Results, however, may be inconsistent. For example, some studies suggest that increases in average temperature are associated with increased TB incidence(222–224), whilst others report that increased temperatures are protective(225–228). A recent systematic review and meta-analysis of meteorological factors and TB found that TB risk was positively correlated with precipitation exposures but not average temperature, humidity, air pressure, or sunshine duration(229). Another meta-analysis on ecological-level factors and TB found higher humidity and precipitation were associated with increased TB incidence, whilst higher wind speed was associated with reduced TB incidence(230). It has also been posited that antimicrobial resistance may independently increase as temperature increases(231).

Importantly, these associations alone provide little insight into the pathways through which such meteorological factors might impact TB. Relatedly, seasonal variations in TB case notifications have been demonstrated in multiple settings(232–235), with explanations proposed ranging from seasonal-related migration (mostly for economic opportunities); to indoor crowding (because of cold weather or extreme heat); and vitamin D deficiency in winter manifesting as a spring peak in notifications. Ultimately, the relationship between meteorological factors and TB is likely to be highly context-specific, varying by geographical region, local climate patterns, and socioeconomic conditions, and further research is required in this area.

1144

1145 **Annex**

1146 **Table 1.** Search strategy terms

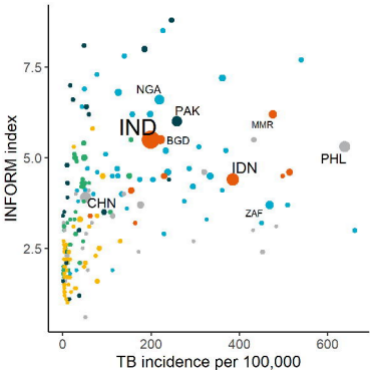
Concept			Search terms for Ovid Medline	
1) Climate change		1	(climate change OR global warming OR climate OR weather OR extreme events OR disaster* OR drought OR flood* OR storm OR wildfire OR extreme heat).ti,ab.	
		2	exp Climatic Processes/	
		3	exp Climate/	
		4	exp Weather/	
			or/1-4	
Climate/health link	2) Migration and displacement	1	(migra* OR displac* OR refugee OR asylum).ti,ab.	
		2	exp Human Migration/	
		3	Refugees/	
		4	“Transients and Migrants”/	
			or/1-4	
	3) Food and water security		1	(undernutr* OR malnutr* OR underweight OR nutri* OR weight OR wasting OR thin OR thinness OR body mass index OR bmi).ti,ab.
			2	Malnutrition/
			3	Thinness/
			4	Wasting syndrome/
			5	Nutrition disorders/
			6	body weight/ or weight loss/

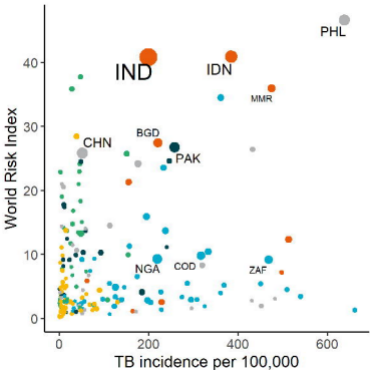
		7	body mass index/	
			or/1-8	
		4) Health system disruptions	1	(disrupt* OR interrupt* OR access OR provi* OR reduc* OR usage OR stockout OR coverage).ti,ab
			2	(health system OR facility OR clinic OR hospital OR healthcare).ti,ab.
			3	exp Health Facilities/
4	1 AND (or/2-3)			
Consequences for TB	5) TB	1	(tb OR tuberc*).ti,ab.	
		2	exp tuberculosis/	
		3	mycobacterium tuberculosis/	
		4	or/1-3	
	6) Infection	4	(exposure OR conversion OR latent OR ltbi OR infect* OR mix* OR contact OR transmi* OR risk OR ratio).ti,ab.	
	7) Disease	5	(progress* OR disease OR active OR burden OR develop* OR inciden* OR risk OR rate).ti,ab.	
	8) Outcomes	6	(therapy OR treatment OR outcome OR success OR failure OR relapse OR diagnos* OR death OR mortality OR adher* OR cost* OR stigma OR notification*).ti,ab.	
	9) Study type		1	(modeling OR modelling OR predict* OR project* OR systematic review OR literature review OR narrative review OR scoping review OR meta-analysis).ti,ab.
2			systematic review/	
3			meta-analysis/	
4			exp models, statistical/	
			or/1-4	

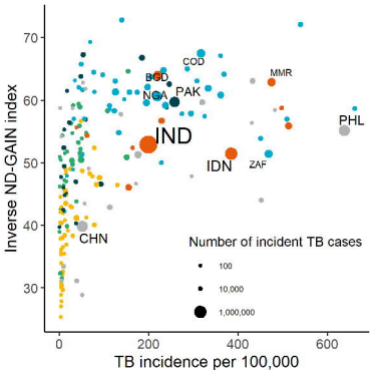
1148 **Table 2.** Number of records returned by searches

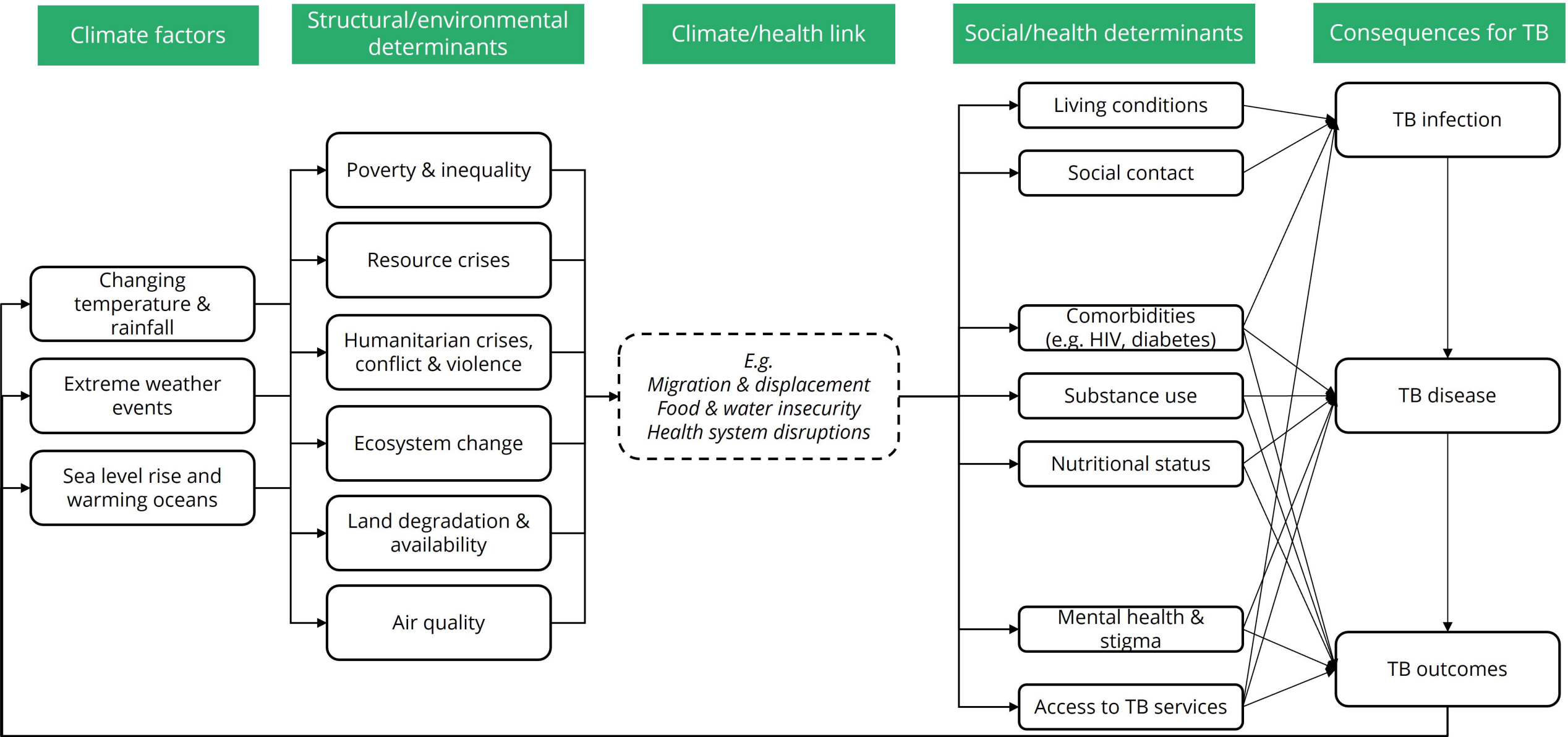
Search	Number of articles
Climate change AND migration and displacement	2,324
Migration and displacement AND TB infection	356
Climate change AND food/water insecurity	6,515
Food/water insecurity AND TB disease	1,412
Climate change AND health system disruptions	2,574
Health system disruptions AND TB outcomes	1,459

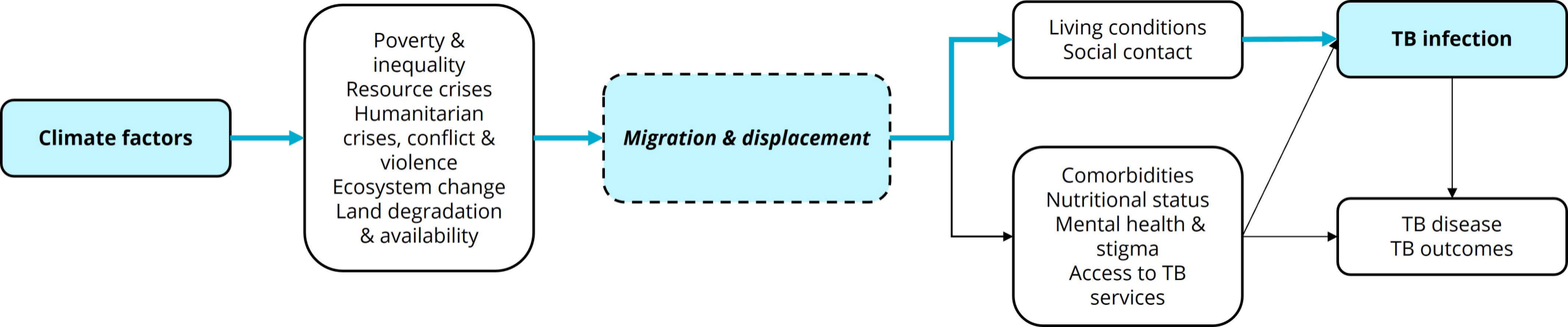
1149

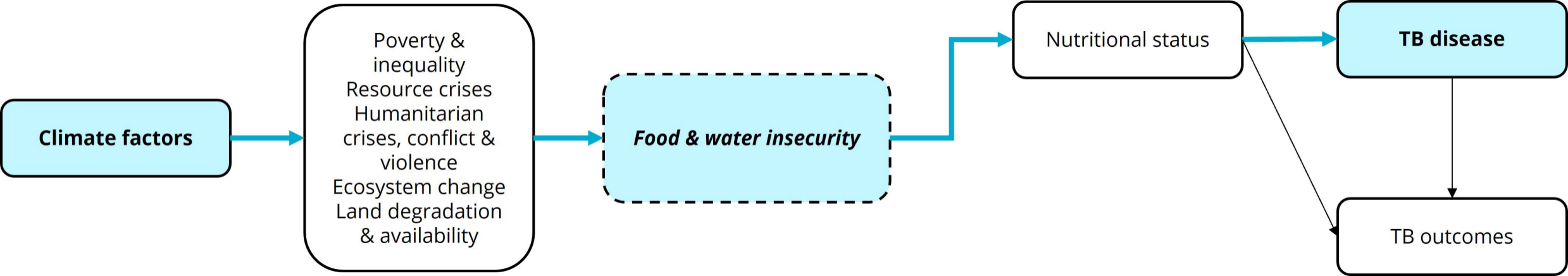












Climate factors

Poverty & inequality
Resource crises
Humanitarian crises, conflict & violence
Ecosystem change
Land degradation & availability

Food & water insecurity

Nutritional status

TB disease

TB outcomes

