

1 **Low levels of post-vaccination hemagglutination inhibition antibodies and their correlation with influenza**
2 **protection among healthcare workers during the 2024/2025 A/H1N1 outbreak in Japan**

3

4 Shohei Yamamoto, PhD¹; Tetsuya Mizoue, PhD¹; Mugen Ujiie, PhD²; Kumi Horii, RN³; Junko S. Takeuchi, Ph.D⁴;
5 Maki Konishi¹; Wataru Sugiura, PhD⁵; Norio Ohmagari, PhD.⁶

6

7 ¹ Department of Epidemiology and Prevention, Center for Clinical Sciences, National Center for Global Health and Medicine, Tokyo,
8 Japan

9 ² Vaccination Support Center, Disease Control and Prevention Center, National Center for Global Health and Medicine, Tokyo

10 ³ Infection Control Office, Center Hospital of the National Center for the Global Health and Medicine, Tokyo, Japan

11 ⁴ Department of Academic-Industrial Partnerships Promotion, Center for Clinical Sciences, National Center for Global Health and
12 Medicine, Tokyo, Japan

13 ⁵ Center for Clinical Sciences, National Center for Global Health and Medicine, Tokyo, Japan

14 ⁶ Disease Control and Prevention Center, National Center for Global Health and Medicine, Tokyo, Japan

15

16 **Keywords:** Influenza; post-COVID-19, hemagglutination inhibition antibody; vaccination; protection

17 **Running title:** Low HI Titer against H1N1 and Protection

18

19 **Corresponding Author:** Shohei Yamamoto, Ph.D.

20 Department of Epidemiology and Prevention, Center for Clinical Sciences, National Center for Global Health and

21 Medicine, 1-21-1, Toyama, Shinjuku-ku, Tokyo, 162-8655, Japan; email: syamamoto@hosp.ncgm.go.jp

22

23 **Alternative Corresponding Author:** Tetsuya Mizoue, Ph.D.

24 Department of Epidemiology and Prevention, Center for Clinical Sciences, National Center for Global Health and

25 Medicine, 1-21-1, Toyama, Shinjuku-ku, Tokyo, 162-8655, Japan; email: mizoue@hosp.ncgm.go.jp

26

27 **Word Count:** Abstract, 250; main text, 3000

28

29 **Main points:**

30 During Japan's record-breaking 2024/2025 influenza A/H1N1 outbreak, HI antibody titers against A/H1N1 were

31 extremely low in vaccinated healthcare workers. Nonetheless, even relatively low post-vaccination HI titers

32 conferred moderate protection, highlighting the benefits of vaccination despite reduced immunogenicity.

33 **Abstract**

34 **Background**

35 After the prolonged COVID-19 pandemic, during which the seasonal influenza epidemic was suppressed, Japan
36 experienced a record-breaking influenza A/H1N1 outbreak in the 2024/2025 season. This situation also raises a
37 concern about the immunogenicity of the annual quadrivalent inactivated influenza vaccine (QIIV). This study
38 evaluated post-vaccination hemagglutination inhibition (HI) antibody titers and their association with influenza
39 infection risk among healthcare workers.

40

41 **Methods**

42 A serosurvey was conducted among staff at a national medical and research center in Tokyo in December 2024, one
43 month after staff received the QIIV. HI antibody titers against vaccine strains were measured, and participants were
44 followed for influenza infection until January 2025. Seroprotection was defined as an HI titer ≥ 40 . A Cox
45 proportional hazards model assessed the association between HI titers and infection risk among vaccinated
46 participants.

47

48 **Results**

49 Among 1,507 vaccinated participants, only 12.7% had seroprotective HI titers against A/H1N1. Around 90% had
50 no influenza history for at least four seasons and had received repeated vaccinations over two seasons. Participants
51 with HI titers < 40 had a 4-fold higher infection risk than those with titers ≥ 40 . A dose-response association was
52 observed, even within the range below the titer of 40. Relative to titers < 10 , titers of 10 and 20 conferred 47.3% and
53 57.9% protection, respectively.

54

55 **Conclusions**

56 After a prolonged period without a major influenza epidemic, HI titers against A/H1N1 were extremely low in
57 vaccinated healthcare workers. Nonetheless, higher post-vaccination HI titers, even at relatively low levels, were
58 associated with protection, supporting the benefit of vaccines.

59 **Introduction**

60 During the 2024/2025 season, Japan recorded the highest number of influenza cases per week since 1999,
61 when the country began tracking the number [1]. The majority of the reported cases were due to the A/H1N1
62 sublineage strain. This ongoing large-scale outbreak is likely due to the lack of herd immunity to influenza after the
63 long-term COVID-19 pandemic. Preventive measures against COVID-19, such as mask-wearing and social
64 distancing, have been highly effective in reducing influenza virus transmission, substantially suppressing the
65 influenza epidemic in Japan from the 2020/2021 to 2021/2022 seasons [1]. Tokyo's annual serosurveys have shown
66 a substantial decrease in the prevalence of seroprotection against the A/H1N1 strain, defined as hemagglutination
67 inhibition (HI) antibody titers ≥ 40 , among unvaccinated individuals, from 98.4% in 2019 to 2.7% in 2023 [2].

68 In a situation where herd immunity against influenza is declining, vaccine-induced immunity is critical.
69 Before the COVID-19 pandemic, clinical trials in adults assessed the immunogenicity of the inactivated
70 quadrivalent influenza vaccines (QIIV), reporting an increase in the prevalence of seroprotection from 20–70%
71 pre-vaccination to 80–100% post-vaccination [3]. As these results indicate, annual vaccination programs are
72 designed to boost pre-existing immunity that was already primed before vaccination [4]. Given the current situation
73 in Japan where pre-vaccination immunity is extremely low, concerns arise about whether vaccination can induce
74 immunity as effectively as before the COVID-19 pandemic. So far, data on vaccine immunogenicity following the
75 long-term COVID-19 pandemic remain limited: one available report from Tokyo's annual serosurvey in the last
76 2023/2024 season reported 4.0% of 101 vaccinated individuals had an HI titer ≥ 40 against A/H1N1 [2]. In addition,
77 it remains elusive whether such vaccine-induced antibody titers correlate with protection against influenza infection
78 during the 2024/2025 A/H1N1 outbreak.

79 In the National Center for Global Health and Medicine (NCGM) in Tokyo, the staff received the QIIV as an
80 employee immunization program in October and November 2024; one month later, approximately 1600 staff
81 participated in a serosurvey assessing influenza HA antibodies; shortly after, a major influenza outbreak occurred.
82 This situation prompted us to evaluate HI antibody levels and their related factors in vaccinated healthcare workers
83 and examine the association between pre-infection HI antibody titers and the risk of influenza infection early in the
84 2024/2025 season.

85

86 **Methods**

87 *Study setting and population*

88 The NCGM is a national medical and research center for specific areas, including infectious diseases. As an
89 annual influenza vaccination program, the staff received the QIIV vaccine (DENKA Co., Ltd.) against
90 A/Victoria/4897/2022 (H1N1), A/California/122/2022 (H3N2), B/Austria/1359417/2021 (Victoria lineage), and
91 B/Phuket/3073/2013 (Yamagata lineage) in October and November 2024. This vaccine, along with all influenza
92 vaccines approved for adults in Japan, is a non-adjuvanted inactivated vaccine containing the four antigens.

93 In the NCGM, a repeated serological study was launched in July 2022 to monitor the spread of SARS-CoV-2
94 infection among staff during the COVID-19 epidemic. The details of this study have been reported elsewhere [5, 6].
95 With the circulation of seasonal influenza returning to pre-COVID-19 pandemic levels, we added monitoring the
96 spread of influenza infections in 2023. In the eleventh serosurvey on December 2–6, 2024, we measured HI
97 antibody titers to influenza and asked participants for a history of influenza diagnosis and vaccination via a
98 questionnaire, which was confirmed by records of the infection control unit and the labor-management department,
99 respectively. Written informed consent was obtained from all participants. This study was approved by the NCGM
100 Ethics Committee (approved number: NCGM-G-003598).

101 Of 1918 staff invited to the eleventh serosurvey, 1609 (84%) participated. Of these, we excluded those
102 without data on vaccination for the 2024/2025 season (n=1) and those diagnosed with influenza during the current
103 season before the serosurvey (n=10), leaving 1598 participants for analyses.

104

105 *Antibody testing*

106 The serum HI antibody titers against the four influenza virus antigens, which correspond to the antigens of
107 the 2024/2025 seasonal QIIV in Japan, were measured at an external laboratory (LSI Medience Corporation,
108 Tokyo) following the standard World Health Organization reagent preparation protocols [7]. These antigens for the
109 assays were sourced from DENKA Co., Ltd., the same manufacturer of the 2024/2025 seasonal vaccine
110 administered at NCGM. The assay used goose red blood cells (RBCs) for A/H3N2 and chicken RBCs for the other
111 antigens. Serum-virus incubation was conducted at 37°C to ensure optimal sensitivity and specificity for the
112 vaccine antigens. Serum samples were tested in serial 2-fold dilutions with a starting dilution of 1:10. The HI
113 antibody titer was defined as the reciprocal of the highest serum dilution that gave a positive result. The lower limit
114 of quantitation was a titer of 10, and samples with titers below this threshold were assigned a titer of 5.

115

116 *Ascertainment of subsequent Influenza infection*

117 To assess the association between post-vaccination HI titers against A/H1N1 and the risk of breakthrough
118 infection, we followed the participants for influenza incidence from the date of the survey participation (December
119 2–6, 2024) through January 15, 2025, during which A/H1N1 was predominant in Japan. We identified patients with
120 influenza using in-house registry data that included information on the date of diagnosis, virus type (A or B),
121 symptoms, and hospitalization. As per the NCGM rule, staff should undergo diagnostic tests for influenza and
122 COVID-19 when they have cold-like symptoms, and if the test results are positive, they must report the results to
123 the NCGM Hospital Infection Prevention and Control Unit.

124

125 *Data on the number of influenza cases and the distribution of influenza strains and clades across Japan*

126 We obtained data on the number of influenza cases per sentinel in Japan for the 2019/2020 to 2024/2025
127 seasons from the Infectious Disease Weekly Report (IDWR) [1] published by the National Institute of Infectious
128 Diseases (NIID), Japan. We also collected data on influenza virus isolations and detections from the 2019/2020 to
129 2024/2025 seasons in Japan from the Infectious Agents Surveillance Report (IASR) [8] published by the NIID. The
130 A/H1N1 clade distribution from the 2019/2020 to the 2024/2025 seasons in Japan was analyzed using domestic
131 data from the Global Initiative on Sharing All Influenza Data (GISAID) EpiFlu database (<https://gisaid.org/>) as of
132 January 27, 2025.

133

134 *Statistical Analysis*

135 We defined seroprotection as HI titer ≥ 40 , a threshold generally accepted to correspond to a 50% reduction in
136 the risk of contracting influenza [9]. Using a robust Poisson regression, we calculated the prevalence of
137 seroprotection with 95% confidence intervals (CIs) based on the 2024/2025 vaccination status. We compared
138 geometric mean titers (GMT) of HI antibodies according to the 2024/2025 vaccination status using linear
139 regression, with HI titers analyzed on a log scale. Among the participants vaccinated for the 2024/2025 season, we
140 compared the GMTs by the history of influenza diagnosis in the 2022/2023 or 2023/2024 seasons (no diagnosis,
141 diagnosed with A, or diagnosed with B) and by prior vaccination status (2024/2025 season only vs. both 2023/2024
142 and 2024/2025 seasons) with adjustment for age and sex. In the analysis of prior vaccination status, we excluded
143 those with a history of influenza diagnosis in the 2022/2023 or 2023/2024 seasons.

144 We calculated the person-time from the date of the serosurvey participation through the date of influenza
145 diagnosis, additional vaccination, resignation (retirement or leave of absence), or January 15, 2025, whichever
146 occurred first. Among the participants vaccinated for the 2024/2025 season, we fitted a Cox proportional hazards
147 regression model to examine the association between HI titer against A/H1N1 and the risk of breakthrough
148 infection while adjusting for age (continuous) and sex (male, female). The estimated hazard ratio (HR) was used to
149 calculate the protection (%) according to the formula: $(1 - HR) \times 100$. The proportional-hazards assumption was
150 evaluated using Schoenfeld residuals, and no violation of the assumption was found for any covariate ($p > 0.05$ for
151 all). Statistical analyses were performed with Stata version 18.0 (StataCorp), and graphics were generated with
152 Prism version 9 (GraphPad). All P values were 2-sided, and statistical significance was set at $P < 0.05$.

153

154 **Results**

155 *Baseline characteristics*

156 Of the 1598 participants, 72.1% were female, and the median age [interquartile range: IQR] was 38 [27–50]
157 years (**Table 1**). The most common occupations were nurses (37.5%), followed by allied healthcare workers
158 (15.4%), researchers (15.1%), administrative staff (14.6%), and doctors (13.1%). The proportion of QIIV vaccine
159 recipients was 94.3% and 87.7% for the current 2024/2025 season and the previous 2023/2024 season, respectively.
160 The median interval [IQR] between the 2024/2025 vaccination to the serosurvey was 29 [26–38] days. A total of
161 123 participants (7.7%) had a history of influenza diagnosis in the 2022/2023 season ($n=25$) and/or the 2023/2024
162 season ($n=99$).

163

164 *Prevalence of seroprotection and HI titers across the 2024/2025 vaccination status*

165 **Figure 1** shows the comparison of the HI antibodies by the 2024/2025 season vaccination status. The
166 prevalence of seroprotection was generally low but higher in the vaccinated group compared to the unvaccinated
167 group for all four strains: A/H1N1 (12.7% vs. 5.5%), A/H3N2 (68.1% vs. 25.3%), B/Victoria (29.3% vs. 9.9%), and
168 B/Yamagata (40.9% vs. 25.3%). The ratios of GMT(95% CIs) of HI antibodies for the vaccinated to unvaccinated
169 group were 1.4 (1.2–1.7) for A/H1N1, 3.0 (2.5–3.7) for A/H3N2, 2.0 (1.7–2.4) for B/Victoria, and 1.7 (1.4–2.0) for
170 B/Yamagata (all $P < 0.001$).

171

172 *HI titers across a history of influenza diagnosis*

173 **Figure 2A** illustrates the comparison of HI antibody titers across the history of influenza diagnosis in the
174 2022/2023 or 2023/2024 seasons among participants who received the 2024/2025 season vaccine. Participants with
175 a history of influenza A showed slightly higher GMTs against A/H1N1 compared to those without the history (12.1
176 vs. 10.7), yielding a GMT ratio of 1.13 (0.95–1.34). Their GMTs against A/H3N2 were significantly higher than
177 those without the history (54.3 vs. 41.8), with a GMT ratio of 1.30 (1.10–1.53). Those with a history of influenza B
178 had slightly higher GMTs against B/Victoria than those without the history (22.9 vs. 18.5), corresponding to a GMT
179 ratio of 1.24 (0.84–1.81).

180

181 *HI titers across current and previous vaccination status*

182 **Figure 2B** compares HI antibody titers based on influenza vaccination history in the current (2024/2025) and
183 previous (2023/2024) seasons. Participants vaccinated in both seasons had lower GMTs for all four strains than
184 those vaccinated only in the current season, with the greatest difference seen for A/H1N1. The GMT ratios were
185 0.70 (0.59–0.82) for A/H1N1, 0.89 (0.74–1.08) for A/H3N2, 0.88 (0.75–1.04) for B/Victoria, and 0.89 (0.77–1.03)
186 for B/Yamagata.

187

188 *Influenza epidemics and detected strains across Japan in the early 2024/2025 season*

189 In the 2024/2025 season in Japan, the nationwide epidemic began in week 44 (October 30–November 5,
190 2024) when cases per sentinel exceeded 1.00 (**Supplemental Figure 1**). During the period corresponding to the
191 study follow-up (December 2, 2024–January 15, 2025), cases surged, reaching 9.03 in week 49 (December 4–10)
192 and peaking at 64.39 in week 52 (December 25–31), the highest since the IDWR system began in 1999.
193 Subsequently, cases declined to 33.82 in week 1 of 2025 (January 1–7), followed by 18.38 in week 3 (January
194 15–21). From week 49 of 2024 to week 3 of 2025, 634 samples were analyzed for their strains in Japan, and 599
195 (94.5%) were detected as A/H1N1(pdm09), followed by 27 (4.3%) as A/H3N2 and 8 (1.3%) as B/Victoria
196 (**Supplemental Figure 2**). All A/H1N1 viruses belonged to clade 6B.1A.5a.2a based on the GISAID EpiFlu
197 database (**Supplemental Figure 3**).

198

199 *Incidence of Influenza among vaccinated participants during the follow-up*

200 During the A/H1N1 predominant follow-up period, 56 participants were diagnosed with influenza among

201 vaccinated participants. The incidence rate was 9.0 per 10000 person-days. Of the 56 diagnosed individuals, 46 had
202 identified the type of influenza virus: 45 (98%) were Influenza A, and 1 (2%) was Influenza B. All cases reported
203 some symptoms at diagnosis: 53 (95%) had a fever of $\geq 37.5^{\circ}\text{C}$, and 24 (43%) had upper respiratory symptoms. No
204 cases required hospitalization.

205

206 *Association between HI titers against A/H1N1 and protection among vaccinated participants*

207 Among vaccinated participants, the breakthrough infection rate was four times higher in those with
208 pre-infection HI titers <40 compared to those with titers ≥ 40 (10.0 vs. 2.5 per 10,000 person-days) (**Table 2**). No
209 cases were observed in the group with titers ≥ 80 . The Cox regression analysis showed that protection against
210 influenza infection increased steadily with increasing HI titer against A/H1N1. Compared to HI titer <10 , the
211 protection (95% CIs) of HI titer 10, 20, 40, ≥ 80 were 47.3% (1.2–71.8), 57.9% (7.5–80.9), 80.3% (18.2–95.3), and
212 100% (not applicable), respectively (P for trend < 0.01).

213

214 **Discussion**

215 In December 2024, the prevalence of seroprotection was low, especially for A/H1N1, even among healthcare
216 workers who received the vaccine. Nevertheless, there was a dose-response relationship between post-vaccination
217 HI titers against A/H1N1 and influenza protection during the high circulation period of A/H1N1, showing
218 significant protection even at HI titers of 10 and 20.

219 Our finding of 12.7% of seroprotection against A/H1N1 among vaccinated individuals in the 2024/2025
220 season was substantially lower than the results of the 2009–2011 clinical trials on the immunogenicity of QIIV
221 (80–100%) [3], while it is compatible with a low prevalence among vaccinated Tokyo residents in the 2023/2024
222 season (4.0%) [2]. These results suggest that the immunogenicity of the influenza vaccine has decreased during the
223 long-term COVID-19 pandemic. This may be due, at least in part, to a decline in influenza-specific immune
224 memory over the extended period without a major influenza epidemic. Current inactivated influenza vaccines
225 without adjuvants cannot induce robust T cell-dependent memory B cells (MBCs) [10], which play a crucial role in
226 antibody production [11]. Thus, the antibody response to these vaccines primarily depends on pre-existing MBCs
227 [12, 13]. Natural influenza infection can strongly boost MBCs, although this memory fades with time [14]. Most of
228 the present study participants (92.3%) were not diagnosed with influenza during the last four seasons (2020/2021 to
229 2023/2024). In addition, 6% of the vaccinated participants had contracted influenza A within the last two seasons,

230 and they had significantly higher HI titers against A/H3N2 than those without a recent infection history but only
231 marginally higher against A/H1N1, indicating that most previous influenza A cases were likely due to A/H3N2.
232 These findings suggest that nearly all participants may not have had the opportunity to enhance their influenza
233 A/H1N1-specific immune memory for several seasons.

234 Another possible reason for the low immunogenicity is repeated annual vaccination. In this study,
235 approximately 90% of participants received influenza vaccine in both the current and previous seasons, and they
236 had 11-30% lower HI titers than those vaccinated only in the current season. This finding is consistent with
237 previous immunologic studies [15, 16] and is compatible with vaccine effectiveness (VE) studies showing a 7-18%
238 lower VE against influenza infection in individuals vaccinated in both seasons compared to those vaccinated only
239 in the current season [17]. This phenomenon could be explained by the antigenic distance hypothesis [18];
240 pronounced negative interference occurs when previous and current vaccine strains are antigenically similar. The
241 2023/2024 and 2024/2025 QIIV vaccines used for the NCGM in-house vaccination program contained the same
242 antigens except for A/H3N2 (**Supplementary Table 1**). Notably, A/H3N2—the only strain that changed from the
243 previous season—elicited the highest antibody titer after vaccination compared to the other three antigens (GMTs:
244 42.4 vs. 10.8-23.8). However, these data should not be interpreted as evidence against vaccination can be skipped.
245 According to VE studies [19-21], vaccination in both the current and previous seasons showed higher effectiveness
246 against influenza-related hospitalizations than vaccination in either season alone, supporting current
247 recommendations for annual influenza vaccination.

248 Among vaccinated participants, we found that a higher HI titer against A/H1N1 was associated with greater
249 protection against infection during the A/H1N1 outbreak in a dose-response manner. This finding is reasonable
250 because the A/H1N1 antigen of the 2024/2025 vaccine was antigenically well-matched to the current circulating
251 virus in Japan (clade: 6B.1A.5a.2a) [22]. An HI titer of 40 has been accepted as a threshold corresponding to a 50%
252 reduction in the risk of contracting influenza [9]. However, we found that an HI titer of 10–20 against A/H1N1
253 conferred 47.3%–57.9% protection against infection, which is consistent with a meta-analysis showing that the HI
254 titer corresponding to 50% protection is as low as 17 (95% CI: 9–28) [23]. In the present study, 61.3% of
255 vaccinated individuals had HI titers ≥ 10 (**Supplemental Figure 4**); thus, more than half of vaccine recipients may
256 have achieved moderate protection.

257 This study boasts several key strengths, including a relatively large cohort, a high participation rate of 84%,
258 and the availability of HI antibody titers measured around 4 weeks after the vaccination and immediately prior to

259 the influenza outbreak. We should also acknowledge limitations. First, we did not measure pre- and
260 post-vaccination HI titers from the same participants, preventing within-subject comparison and limiting the
261 accurate immune response to vaccination assessment. Second, we did not collect a history of influenza diagnosis
262 before the COVID-19 pandemic. Although pre-COVID-19 studies suggested that natural infection-induced
263 antibody immunity to HA is long-lived (over 50 years) [24], our data did not clarify whether this remains the case
264 following a prolonged actual absence of influenza exposure, including asymptomatic infections. Third, while
265 information on the type of influenza (A or B) was available in both the history and follow-up surveys, data on
266 specific subtypes, such as A/H1N1 and A/H3N2, were not collected in this study. Regarding history, since both
267 A/H1N1 and A/H3N2 predominated in the past two seasons (**Supplemental Figure 2**), it is not possible to estimate
268 which subtype virus represents the history of influenza A. For the follow-up survey, the cases were most likely due
269 to A/H1N1, which accounted for 94.5% of sequenced influenza samples in Japan during the follow-up
270 (**Supplemental Figure 2**). Fourth, we did not assess other humoral or cell-mediated immune indicators. For
271 example, neutralizing antibodies directly reflect the functional ability to block viral infection [24], and
272 cell-mediated immune responses are crucial for long-term and cross-protective immunity [11]. Fifth, we did not
273 conduct active surveillance of influenza infection during the follow-up, possibly underestimating the total cases.
274 Finally, this study included only healthcare workers from a single medical center in Tokyo, most of whom received
275 annual influenza vaccinations and had experienced fewer infections over at least four seasons. In addition, no
276 severe cases were observed. Caution should be exercised when generalizing our findings to different populations,
277 particularly those at high risk of severe influenza, such as children, older adults, and patients with
278 immunosuppressive conditions.

279 In conclusion, HI titers against A/H1N1 were extremely low even in vaccinated healthcare workers after a
280 prolonged period without a major influenza epidemic. Nevertheless, higher post-vaccination HI titers, even at
281 modest levels below 40, were associated with greater protection against influenza infection, supporting the benefit
282 of influenza vaccination in the post-COVID-19 era. Future studies should explore the mechanisms behind the low
283 immunogenicity after vaccination and address improving the immunological response and effectiveness of the
284 influenza vaccine.

285

286 **Acknowledgments:**

287

288 **Author Contributions**

289 Drs. Yamamoto and Mizoue had full access to all data in the study and took responsibility for the integrity of the
290 data and the accuracy of the data analysis.

291 Conceptualization: SY and TM. Methodology: SY and TM. Software: SY, JT, and MK. Validation: MK and TM.

292 Formal analysis: SY. Investigation: SY, TM, KH, JT, and MK. Resources: TM, KH, JT, WS, and NO. Data

293 Curation: SY, JT, and MK. Writing - Original Draft: SY and TM. Visualization: SY and JT. Supervision: TM, MU,

294 and NO. Project administration: SY and TM. Funding acquisition: SY and TM. All authors contributed to
295 manuscript revisions and editing.

296

297 **Conflict of Interest Disclosures**

298 All authors: No conflicts of interest were reported.

299

300 **Funding/Support**

301 This work was supported by the NCGM COVID-19 Gift Fund (grant number 19K059 to TM), Japan Health

302 Research Promotion Bureau Research Fund (grant number 2020-B-09 and 2024-B-01 to TM), and National Center

303 for Global Health and Medicine (grant number 21A2013D and 23A2020D to TM, and grant number 24A1011 to

304 SY).

305

306 **Role of the Funder/Sponsor**

307 The above entities had no role in the design or conduct of the study; collection, management, analysis, and

308 interpretation of the data; preparation, review, or approval of the manuscript; or the decision to submit the

309 manuscript for publication.

310

311 **Additional Contributions**

312 We thank Mika Shichishima for her contribution to data collection.

313

314

315 References

- 316 1. National Institute of Infectious Diseases. Infectious Disease Weekly Report JAPAN (IDWR). Available at:
317 <https://www.niid.go.jp/niid/en/idwr-e.html>. Accessed January 15 2025.
- 318 2. Tokyo Metropolitan Infectious Disease Surveillance Center. Epidemiological Surveillance of
319 Vaccine-Preventable Diseases. Available at: <https://idsc.tmiph.metro.tokyo.lg.jp/vpd/>. Accessed January 15
320 2025.
- 321 3. Moa AM, Chughtai AA, Muscatello DJ, Turner RM, MacIntyre CR. Immunogenicity and safety of inactivated
322 quadrivalent influenza vaccine in adults: A systematic review and meta-analysis of randomised controlled trials.
323 *Vaccine* **2016**; 34:4092-102.
- 324 4. Palgen J-L, Feraoun Y, Dzangué-Tchoupou G, et al. Optimize Prime/Boost Vaccine Strategies: Trained
325 Immunity as a New Player in the Game. *Frontiers in Immunology* **2021**; 12.
- 326 5. Yamamoto S, Oshiro Y, Inamura N, et al. Durability and determinants of anti-SARS-CoV-2 spike antibodies
327 following the second and third doses of mRNA COVID-19 vaccine. *Clin Microbiol Infect* **2023**.
- 328 6. Yamamoto S, Matsuda K, Maeda K, et al. Preinfection Neutralizing Antibodies, Omicron BA.5 Breakthrough
329 Infection, and Long COVID: A Propensity Score-Matched Analysis. *The Journal of Infectious Diseases* **2023**.
- 330 7. Organization WH. WHO manual on animal influenza diagnosis and surveillance: World Health Organization,
331 **2002**.
- 332 8. National Institute of Infectious Diseases. Infectious Agents Surveillance Report (IASR). Available at:
333 <https://www.niid.go.jp/niid/ja/iasr-inf.html>. Accessed January 27 2025.
- 334 9. Hobson D, Curry RL, Beare AS, Ward-Gardner A. The role of serum haemagglutination-inhibiting antibody in
335 protection against challenge infection with influenza A2 and B viruses. *Epidemiology and Infection* **1972**;
336 70:767-77.
- 337 10. Abreu R, Ross TM. Influenza – A new pathogen every year. *Current Opinion in Systems Biology* **2018**;
338 12:12-21.
- 339 11. Syeda MZ, Hong T, Huang C, Huang W, Mu Q. B cell memory: from generation to reactivation: a multipronged
340 defense wall against pathogens. *Cell Death Discovery* **2024**; 10.
- 341 12. Cheng X, Zengel JR, Suguitan AL, et al. Evaluation of the Humoral and Cellular Immune Responses Elicited by
342 the Live Attenuated and Inactivated Influenza Vaccines and Their Roles in Heterologous Protection in Ferrets.
343 *The Journal of Infectious Diseases* **2013**; 208:594-602.
- 344 13. Abreu RB, Kirchenbaum GA, Clutter EF, Sautto GA, Ross TM. Preexisting subtype immunodominance shapes
345 memory B cell recall response to influenza vaccination. *JCI Insight* **2020**; 5.
- 346 14. Kurosaki T, Kometani K, Ise W. Memory B cells. *Nature Reviews Immunology* **2015**; 15:149-59.
- 347 15. Thompson MG, Naleway A, Fry AM, et al. Effects of Repeated Annual Inactivated Influenza Vaccination among
348 Healthcare Personnel on Serum Hemagglutinin Inhibition Antibody Response to A/Perth/16/2009 (H3N2)-like
349 virus during 2010-11. *Vaccine* **2016**; 34:981-8.
- 350 16. Ng TWY, Perera RAPM, Fang VJ, et al. The Effect of Influenza Vaccination History on Changes in
351 Hemagglutination Inhibition Titers After Receipt of the 2015–2016 Influenza Vaccine in Older Adults in Hong
352 Kong. *The Journal of Infectious Diseases* **2020**; 221:33-41.
- 353 17. Jones-Gray E, Robinson EJ, Kucharski AJ, Fox A, Sullivan SG. Does repeated influenza vaccination attenuate
354 effectiveness? A systematic review and meta-analysis. *The Lancet Respiratory Medicine* **2023**; 11:27-44.
- 355 18. Smith DJ, Forrest S, Ackley DH, Perelson AS. Variable efficacy of repeated annual influenza vaccination.
356 *Proceedings of the National Academy of Sciences* **1999**; 96:14001-6.
- 357 19. Cheng AC, Macartney KK, Waterer GW, et al. Repeated Vaccination Does Not Appear to Impact Upon
358 Influenza Vaccine Effectiveness Against Hospitalization With Confirmed Influenza. *Clinical Infectious Diseases*
359 **2017**; 64:1564-72.
- 360 20. Rondy M, Launay O, Castilla J, et al. Repeated seasonal influenza vaccination among elderly in Europe: Effects
361 on laboratory confirmed hospitalised influenza. *Vaccine* **2017**; 35:4298-306.
- 362 21. Hsu P-S, Lian I-B, Chao D-Y. A Population-Based Propensity Score-Matched Study to Assess the Impact of
363 Repeated Vaccination on Vaccine Effectiveness for Influenza-Associated Hospitalization Among the Elderly.
364 *Clinical Interventions in Aging* **2020**; Volume 15:301-12.
- 365 22. National Institute of Infectious Diseases. Influenza virus epidemic strains Antigenic analysis and genetic
366 phylogenetic tree in the 2024/2025 season, **2024**.
- 367 23. Coudeville L, Bailleux F, Riche B, Megas F, Andre P, Ecochard R. Relationship between
368 haemagglutination-inhibiting antibody titres and clinical protection against influenza: development and
369 application of a bayesian random-effects model. *BMC Medical Research Methodology* **2010**; 10:18.
- 370 24. Krammer F. The human antibody response to influenza A virus infection and vaccination. *Nature Reviews*
371 *Immunology* **2019**; 19:383-97.
- 372

Table 1. Participants characteristics

	Total
	N=1598
Sex	
Male	446 (27.9)
Female	1152 (72.1)
Age	38 [27–50]
20–29	527 (33.0)
30–39	323 (20.2)
40–49	323 (20.2)
≥50	425 (26.6)
Job	
Doctors	209 (13.1)
Nurses	600 (37.5)
Allied healthcare professionals	246 (15.4)
Administrative staff	233 (14.6)
Researcher	242 (15.1)
Others	68 (4.3)
History of influenza vaccination	
2023/24 season	1,376 (87.7)
2024/25 season	1,507 (94.3)
Days since the 2024/25 season vaccination	29 [26–38]
History of influenza diagnosis	
2022/23 season	25 (1.6)
2023/24 season	99 (6.1)
2022/23 or 2023/24 seasons	123 (7.7)

Data are presented as numbers (%) for categorical variables and median [interquartile range] for continuous variables.

Missing values: 2023/24 season vaccination status (n=29)

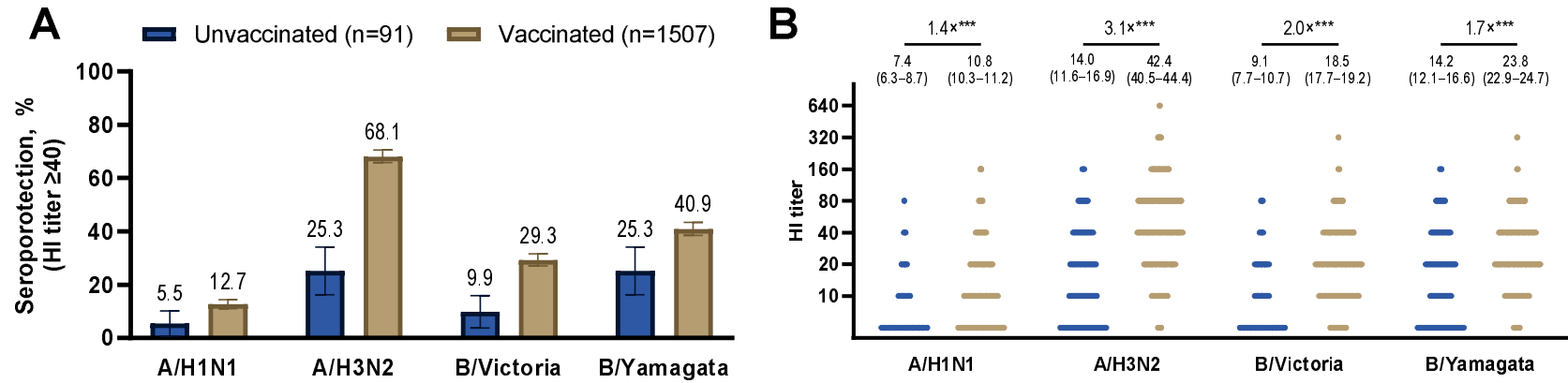


Figure 1. Prevalence of seroprotection (**A**) and comparison of the geometric mean hemagglutination inhibition titers (**B**) against four influenza virus strains by the 2024/2025 vaccination status.

(**A**): The left panel displays the prevalence of seroprotection (HI titers ≥ 40), stratified by 2024/25 vaccination status. Bars represent the prevalence of seroprotection, with error bars indicating 95% CIs estimated using robust Poisson regression. (**B**): The right panel compares geometric mean HI titers by 2024/25 vaccination status. The presented values are geometric mean titers and 95% CIs, and the fold-change values (\times) indicate the ratio of geometric mean titers, estimated using linear regression (***) $P < 0.001$).

Abbreviations: HI, hemagglutination inhibition; 95% CI, 95% confidence interval.

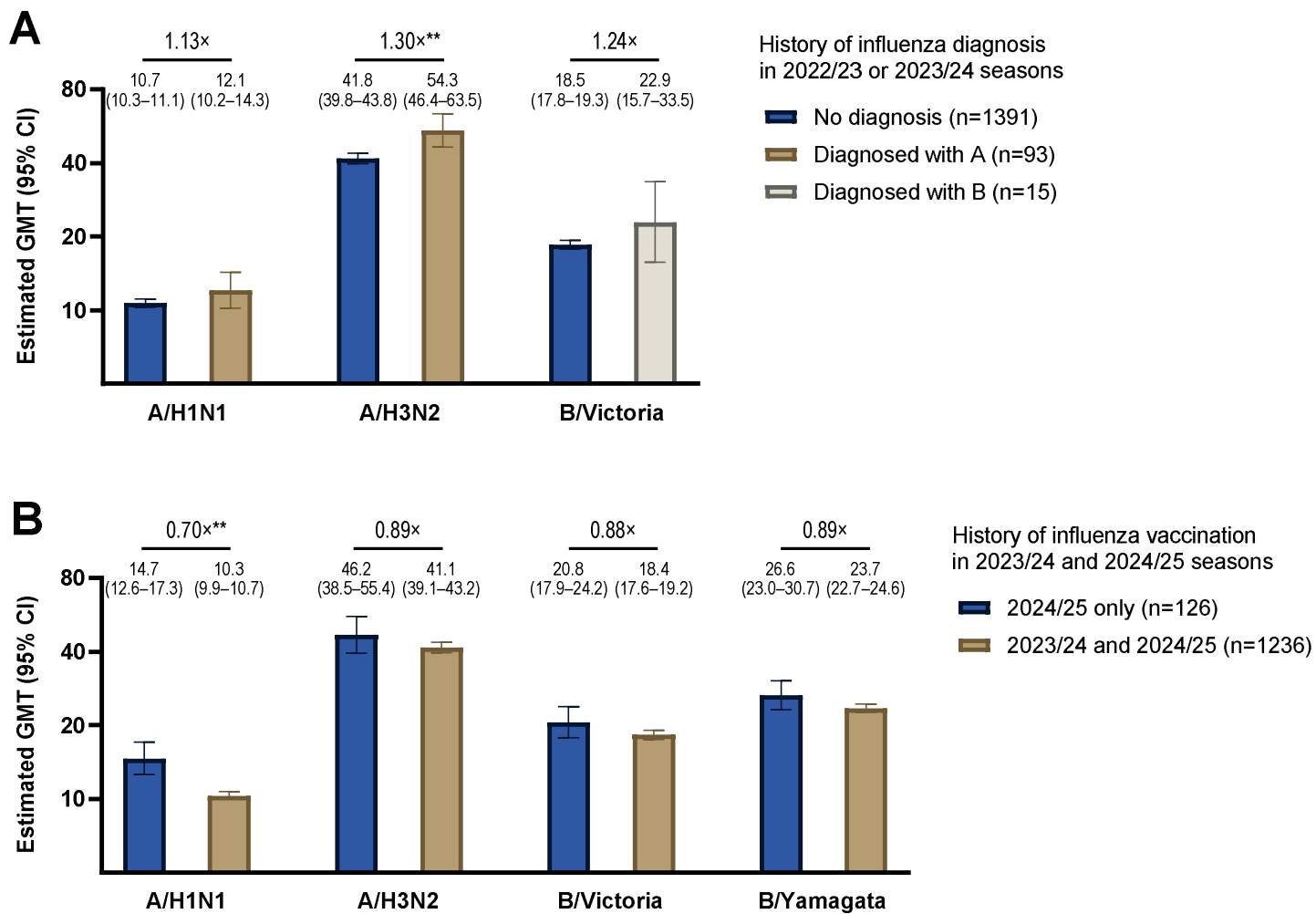


Figure 2. Comparison of the geometric mean hemagglutination inhibition titers by the history of influenza diagnosis in the 2022/2023 or 2023/2024 (A) and by the

current and previous vaccination status (B) among the 2024/2025 vaccinated participants.

(A): The upper panel compares the GMT by the history of influenza diagnosis in 2022/2023 or 2023/2024 among the 2024/2025 vaccinated participants. For HI titers against A/H1N1 and A/H3N2, we compared them between those without a history of influenza and those with a history of influenza A. For HI titers against B/Victoria, we compared the titer between those without a history of influenza and those with a history of influenza B. Since the B/Yamagata has not been detected since 2020, we did not compare that titer. Those who lacked information about the type of influenza (A or B) were excluded from this analysis (n=8). (B): The lower panel compares GMT by the 2024/2025 and 2023/2024 vaccination status among the 2024/2025 vaccinated participants. Those with a history of influenza diagnosis in 2022/2023 or 2023/2024 were excluded from this analysis (n=116). The bars indicate the estimated GMT, and the I-bars indicate 95% CIs. The presented values are GMT and 95% CIs, and the fold-change values (\times) indicate the ratio of GMT, estimated using linear regression with adjustment for age and sex (*P < 0.05, **P < 0.01, ***P < 0.001).

Abbreviations: GMT, geometric mean titer; HI, hemagglutination inhibition; 95% CI, 95% confidence interval.

Table 2. Association between pre-infection HI titers against A/H1N1 and the protection against influenza infection among vaccinated participants during the 2024/25 A/H1N1 outbreak in Japan

HI titer against A/H1N1	No. of vaccinated participants	Breakthrough infection during the 2024/2025 A/H1N1 outbreak in Japan				
		No. of cases	Person-days	Incident rate per 10,000 person-days	Adjusted HR (95% CI)	Protection (95% CI)
<10	583	31	23937	13.0	reference	reference
10	437	14	18032	7.8	0.53 (0.28 to 0.99)	47.3% (1.2 to 71.8)
20	296	9	12245	7.3	0.42 (0.19 to 0.93)	57.9% (7.5 to 80.9)
40	135	2	5620	3.6	0.20 (0.05 to 0.82)	80.3% (18.2 to 95.3)
≥80	56	0	2360	0.0	0.00 (NA)	100% (NA)
<i>P for trend < 0.01</i>						
<40	1316	54	54542	10.0	reference	reference
≥40	191	2	8020	2.5	0.21 (0.05 to 0.87)	78.6% (12.7 to 94.7)

The hazard ratio for breakthrough infection by HI titers against A/H1N1 was estimated using a Cox regression model, adjusted for age and sex.

Protection was calculated as $(1 - \text{HR}) \times 100$. The P for trend was determined using the Cox model, treating HI titers as continuous variables.

Abbreviations: HI, hemagglutination inhibition; HR, hazard ratio; NA, not applicable; 95% CI, 95% confidence interval