

Exploring multidrug resistance patterns in community-acquired *E. coli* urinary tract infections with machine learning

Authors: Elise HODBERT ^{1,2}, Olivier LEMENAND ^{3,4}, Sonia THIBAUT ^{3,4}, Thomas COEFFIC ^{3,4}, David BOUTOILLE ^{4,5}, Stephane CORVEC ^{6,7}, Gabriel BIRGAND ^{1,3,4*}, Laura TEMIME ^{1,8*} on behalf of the French Clinical Laboratories Nationwide Network†

¹ Cibles et médicaments des infections et de l'immunité, IICiMed, Nantes Université, Nantes, France

² Laboratoire Modélisation, Epidémiologie et Surveillance des Risques Sanitaires (MESuRS), Conservatoire National des Arts et Métiers, Paris, France

³ Centre d'Appui à la Prévention des Infections Associées aux Soins des Pays de la Loire, Centre Hospitalier Universitaire (CHU) - Le Tourville, Nantes, France

⁴ French National Surveillance System of Antimicrobial Resistance in Primary Care and Nursing Homes, PRIMO, CHU - Le Tourville, Nantes, France

⁵ Department of Infectious Diseases, University Hospital of Nantes and Centre d'Investigation Clinique 1413, Institut National de la Santé et de la Recherche Médicale, Nantes, CHU Nantes, Pays de la Loire, Nantes, France

⁶ Service de Bactériologie, CHU Nantes, Nantes, France

⁷ INSERM, Immunology and New Concepts in ImmunoTherapy, INCIT, UMR 1302, Nantes Université, Nantes, France.

⁸ Institut Pasteur, Conservatoire National des Arts et Métiers, Unité PACRI, Paris, France

*Equal contribution

†Members are listed in the Acknowledgements section

Running title: Exploring multidrug resistance *E. coli* with machine learning

Abstract word count: 296 words

Text word count: 3499 words

Corresponding author: Laura TEMIME, PhD, CNAM, Paris, France
(laura.temime@lecnam.net). Tel.: +33 153018011.

34 **Abstract**

35 **Background**

36 While associations of antibiotic resistance traits are not random in multidrug-resistant (MDR)
37 bacteria, clinically relevant resistance patterns remain relatively underexplored. This study
38 used machine learning, specifically association-set mining, to explore resistance associations
39 within *E. coli* isolates from community-acquired urinary tract infections (UTIs).

40 **Methods**

41 We analysed antibiograms of community-acquired *E. coli* UTI isolates collected from 2018 to
42 2022 by France's national surveillance system. Association-set mining was applied separately
43 to extended-spectrum beta-lactamase-producing *E. coli* (ESBL-EC) and non-ESBL-EC. MDR
44 patterns that had expected support (reflecting pattern frequency) and conditional lift (reflecting
45 association strength) higher than expected by chance ($p\text{-value}\leq 0.05$) were used to construct
46 resistance networks, and analysed according to time, age and gender.

47 **Findings**

48 The number of isolates increased from 360 287 in 2018 (10 150 ESBL-EC, 350 137 non-ESBL-
49 EC) to 629 017 in 2022 (18 663 ESBL-EC, 610 354 non-ESBL-EC). More MDR patterns were
50 selected in ESBL-EC than non-ESBL-EC (2022: 1770 vs 93 patterns), with higher respective
51 network densities (2022: 0.230 vs 0.074). Fluoroquinolone, third-generation cephalosporin and
52 penicillin resistances were strongly associated in ESBL-EC. The median densities of
53 resistance association networks increased from 2018 to 2022 in both ESBL-EC (0.238 to
54 0.302, $p\text{-value}=0.06$, Pearson test) and non-ESBL-EC (0.074 to 0.100, $p\text{-value}=0.04$). Across
55 all years, median network densities were higher in men than women in both ESBL-EC (2022:
56 0.305 vs 0.276) and non-ESBL-EC (2022: 0.128 vs 0.094); they were also higher in individuals
57 over 65 years old than under 65 in ESBL-EC (2022: 0.289 vs 0.275) and non-ESBL-EC (2022:
58 0.103 vs 0.088).

59 **Interpretation**

60 These findings, which show increasing MDR associations, especially in men and older
61 individuals, highlight the importance of ongoing resistance surveillance to understand the
62 future evolution of resistance patterns.

63 **Funding**

64 This work received funding from the French government through the National Research
65 Agency project COMBINE ANR-22-PAMR-0003.

66 **Keywords:** Machine learning, Community-acquired *E. coli* UTI (urinary tract infection),
67 multiresistance pattern, antibiotic resistance, network analysis

68

69 **Research in context**

70 **Evidence before this study**

71 We searched Pubmed for previously published articles without any date or language
72 restrictions using the search terms (multiresistan* OR "multidrug-resistan*") AND ("data
73 mining" OR "machine learning" OR "artificial intelligence") AND (pattern* OR associat*). We
74 found three studies that used machine learning to identify multiresistance patterns in various
75 pathogens (chicken-associated *Escherichia coli*, human-associated *Staphylococcus aureus*
76 and cattle-associated *Salmonella enterica*) in the United States. However, to our knowledge,
77 no machine-learning studies to date have explored multiresistance patterns in human-
78 associated Enterobacterales, especially within European contexts.

79 **Added value of this study**

80 Our study provided a novel and detailed analysis of multiresistance patterns in community-
81 acquired *E. coli* urinary tract infection collected from a French national surveillance system.
82 Our findings confirmed that association-set mining is effective for identifying resistance
83 associations in antibiotic resistance surveillance data. We explored the temporal evolution of
84 resistance associations, gender-specific and age-specific differences, which to our knowledge,
85 had not been previously analysed.

86 **Implications of all the available evidence**

87 Our results suggest a temporal increase of resistance associations in community-acquired *E.*
88 *coli* UTI and identify key patterns in different subpopulations. In the context of rising antibiotic
89 resistance, optimizing the use of current medications is crucial, as few new antibiotics have
90 been developed in the past two decades. With further research, this work could provide insight
91 for targeted antibiotic stewardship strategies.

92

93 Introduction

94 Antimicrobial-resistance (AMR) is an increasing public health issue, notably due to the
95 extensive use of antibiotics and increasing global mobility. Infections caused by multidrug-
96 resistant bacteria are challenging to treat, resulting in increased mortality, prolonged hospital
97 stays and higher healthcare costs (1). Initially regarded as a hospital-specific issue, AMR is
98 now recognized as a major problem in community settings and a one-health issue (2). In 2021,
99 AMR-associated infections were directly responsible for approximately 1.14 million deaths
100 globally (3). Multiple studies forecast an increase in resistance to available antibiotics, which
101 could cause >8 million deaths in 2050 (3). The global burden of AMR is driven by a few leading
102 microorganisms, among which resistant *E. coli* infections caused the highest number of deaths
103 in 2019 (4).

104 Multidrug resistance (MDR) does not result from individual drug resistances occurring together
105 by chance, as documented in multiple bacteria (5). Beyond selection pressure, several
106 biological mechanisms are known to contribute to MDR emergence, including horizontal gene
107 transfer (6), non-specific mechanisms like efflux pumps and specific mechanisms like beta-
108 lactamases (5).

109 Here, we use association-set mining, a method that has proven effective in identifying patterns
110 of antibiotic resistance traits in chicken-associated *Escherichia coli*, human-associated
111 *Staphylococcus aureus* and cattle-associated *Salmonella enterica* (7–9), to identify
112 multiresistance patterns in community-acquired *E. coli* urinary tract infections (UTIs) collected
113 by the French national surveillance system of antibiotic resistance. We create graphical
114 networks from the patterns detected by the algorithm in order to highlight resistance
115 associations of interest. By comprehensively studying MDR patterns, we aim to better
116 understand their evolution over time and potential differences across subpopulations.

117

118 **Methods**

119 **Data source**

120 This study used retrospective data collected via PRIMO (Surveillance and Prevention of
121 Antibiotic Resistance in Primary Care and Nursing Homes), a French nationwide surveillance
122 system of clinical laboratories participating on a voluntary basis (742 laboratories in 2018, 1773
123 laboratories in 2022) (10). Data included antibiotic susceptibility testing (AST) results, patient's
124 age, gender, and administrative region. We restricted the analyses to AST collected from *E.*
125 *coli* UTI collected in community laboratories between January 1st, 2018 and December 31st,
126 2022.

127 AST and Extended-spectrum beta-lactamases (ESBL) testing were carried out and assessed
128 according to the recommendations of the AST committee of the French Microbiology Society
129 (11). Each isolate was tested against 3 to 35 antibiotics and categorized in a Susceptible,
130 Susceptible to increased exposure or Resistant format. For this analysis, Susceptible to
131 increased exposure and Resistant were grouped as Resistant. We excluded antibiotics that
132 were tested on less than 10% of isolates on average across all years, and included a single
133 representative antibiotic when several antibiotics had similar resistance patterns. This process
134 resulted in the inclusion of 27 antibiotics (Supplementary Table 1). Carbapenemase-producing
135 isolates were excluded from the analysis as their low frequency did not allow for a robust
136 analysis of their specific multiresistance patterns. To avoid duplicates, when multiple isolates
137 with the same susceptibility pattern were collected from the same individual (same date of birth
138 and sex) within a single clinical laboratory, only the first isolate in the dataset was included.

139 Because the analysis was performed using anonymized surveillance data, ethical consent was
140 not required according to the French Data Protection Act. The dataset was accredited by the
141 French National Data Protection Commission (CNIL 1,685,003), and the fully anonymized data
142 waiver for informed consent of study participants was applied.

143 **Data stratification**

144 We classified isolates into two phenotype categories: ESBL-producing *E. coli* (ESBL-EC),
145 either alone or combined with another phenotype, and non-ESBL-producing *E. coli* (non-ESBL-
146 EC). We conducted analyses separately for each year and phenotype dataset. To explore
147 potential gender- and age-based differences in multiresistance patterns, we also conducted
148 stratified analyses by sex and separate analyses for individuals aged under and over 65.

149 **Testing the independence of individual resistances**

150 We first assessed the independence of individual resistances (8). In the following, H0 refers to
151 the hypothesis that assumes all resistance traits to antibiotics are mutually independent. We
152 simulated 100 datasets under H0, that matched the observed datasets in size, resistance
153 prevalence, and positions of missing AST results. Resistance traits were generated as
154 independent binomial random variables (n = number of isolates tested; p = resistance
155 prevalence). To evaluate the likelihood of the observed MDR prevalence under H0, we
156 compared the distribution of resistance counts per isolate between observed and simulated
157 data using a Kolmogorov-Smirnov test.

158 **Multiresistance patterns identification**

159 We identified MDR patterns from our datasets using association-set mining with the *Apriori*
160 algorithm, as previously proposed by Cazer et al. (8,12). Briefly, we first explored the datasets
161 to select all patterns present with a given frequency, setting the required initial minimum
162 frequency at 0.01 for ESBL-EC and 0.001 for non-ESBL-EC. In a second step, we pruned

163 patterns for which two important metrics, expected support (eSup) and conditional lift (cLift),
164 were significantly lower than expected by chance. To do this, we determined the 5th percentile
165 of eSup and cLift under the resistance independence hypothesis H₀ using the previously
166 described 100 datasets simulated under H₀. eSup measures the pattern frequency within the
167 dataset, while cLift assesses the frequency of a pattern relative to its expected frequency under
168 the assumption that resistance to antibiotics within the pattern are independent. More details
169 on multiresistance pattern identification and accounting for missing data are provided in
170 Supplementary Text 2.

171 **Construction and analysis of resistance associations networks**

172 We decomposed the MDR patterns remaining after pruning into pairwise associations, and
173 built resistance association networks, where nodes represent antibiotics and edges represent
174 resistance associations between two antibiotics.

175 For each reconstructed network, we computed network density. Confidence intervals were
176 estimated using: (i) for 2018, 10 datasets generated by a bootstrap procedure of the original
177 dataset, (ii) for 2019 to 2022, 10 random subsamples of the original datasets, each created to
178 match the size of the 2018 dataset. We calculated the 95% confidence intervals from the 2.5th
179 and the 97.5th percentiles of the results. Time changes in network density were assessed using
180 these constant-size yearly samples, and a Pearson trend test.

181 Networks were also compared between men and women, and individuals under or over 65
182 years old. Similarly to between-year comparisons, we generated 10 random subsamples of
183 the women's (resp. over-65) dataset to match the size of the men's (resp under-65) dataset
184 and computed 95% confidence intervals from either bootstrapped data or these subsamples.

185 **Sensitivity analysis**

186 The regional contributions to the national dataset varied over the years. To investigate the
187 impact of these variations on our results, we created a dataset where the number of isolates
188 from each region was proportional to its population (details in Supplementary Text 3), and
189 replicated our analyses using this dataset.

190 All analyses were performed in R 4.3.2, notably using the package "arules" for association-set
191 mining (Hahsler et al., 2018).

192

193 Results

194 Data description

195 The number of isolates increased over time, from 360 287 in 2018 to 628 993 in 2022 (Table
196 1; p-value=0.01, Pearson trend test). The proportion of ESBL isolates was comprised between
197 2.8% and 3.0%, with no increasing or decreasing trend across the years (p-value=0.79).
198 Throughout all years, between 84.0% and 84.5% of isolates came from women. The mean age
199 ranged from 58 to 60. The isolates came from all regions of metropolitan France, with varying
200 proportions across the years (Figure S1).

201 **Table 1: Summary of PRIMO datasets for *E. coli* UTI samples from 2018 to 2022.**

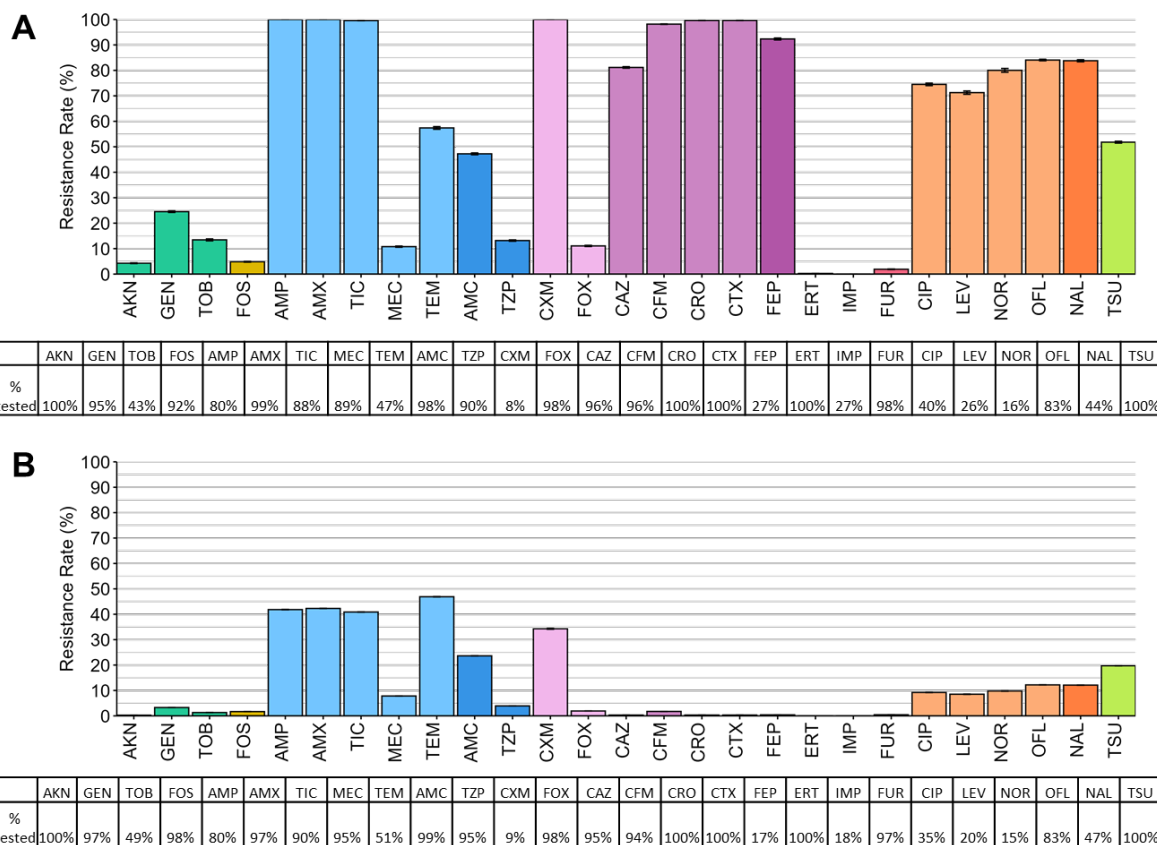
	2018	2019	2020	2021	2022
Number of isolates	360 287	450 820	450 135	571 126	628 993
<i>ESBL</i>	10 150 (2.8%)	13 559 (3.0%)	13 265 (2.9%)	16 006 (2.8%)	18 663 (3.0%)
<i>Non-ESBL</i>	350 137 (97.2%)	437 261 (97.0%)	436 870 (97.1%)	555 120 (97.2%)	610 330 (97.0%)
<i>Women</i>	276 220 (84.5%)	356 002 (84.4%)	361 758 (84.0%)	457 789 (84.3%)	520 081 (84.1%)
<i>Men</i>	50 706 (15.5%)	66 000 (15.6%)	68 730 (16.0%)	85 444 (16.7%)	98 055 (15.9%)
Mean age	58	59	59	60	60

202

203 Individual antibiotic resistance prevalence in ESBL-EC and non-ESBL-EC

204 Regarding penicillins, nearly all ESBL isolates were resistant to ampicillin, amoxicillin and
205 ticarcillin (Figure 1A). Most ESBL isolates were resistant to second- and third-generation
206 cephalosporins, including cefuroxime (100%, 1 535/1 535 tested in 2022), ceftriaxone (99.6%,
207 18 592/18 663 tested) and cefotaxime (99.6%, 18 592/18 663 tested). For fluoroquinolones,
208 between 70% and 85% of isolates were resistant to ciprofloxacin, levofloxacin, norfloxacin and
209 ofloxacin. However, most ESBL isolates were sensitive to first-line antibiotics including
210 fosfomycin (4.9%, 834/17 180 tested), nitrofurantoin (1.9%, 348/18 259 tested), mecillinam
211 (10.8%, 1 800/16 684 tested) and ceftazidime (11.1%, 2035/18 380 tested).

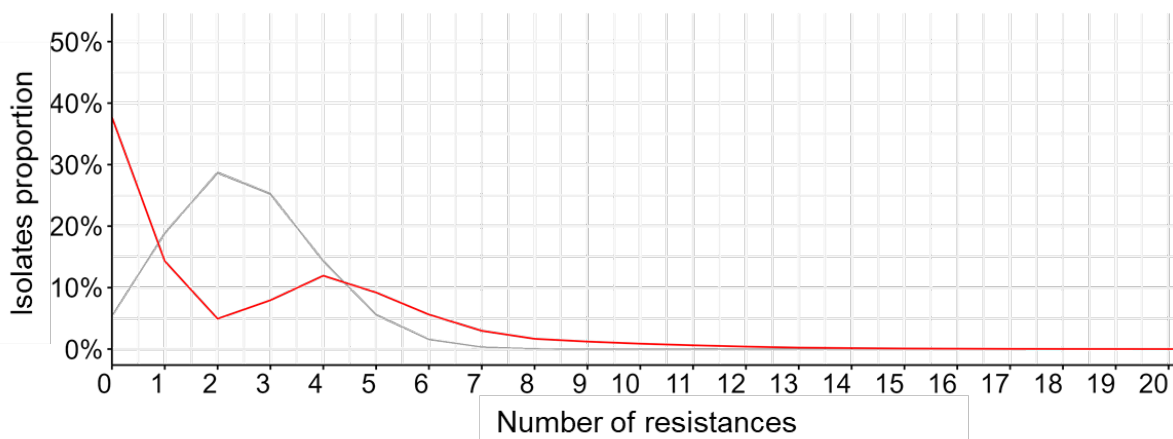
212 Non-ESBL isolates were often resistant to penicillins including ampicillin (41.8%, 203 547/486
213 592 tested), amoxicillin (42.3%, 251 107/593 743 tested) and ticarcillin (40.9%, 223 404/546
214 477 tested) (Figure 1B). Less than 1% of isolates were resistant to third generation
215 cephalosporins including ceftazidime, cefixime, ceftriaxone and cefotaxime. For
216 fluoroquinolones, between 5% and 15% of isolates were resistant to ciprofloxacin, levofloxacin,
217 norfloxacin and ofloxacin. Similar individual antibiotic resistance prevalences were found from
218 2018 to 2021 (Figure S2).



219 **Figure 1: Resistance prevalence and AST frequency for all antibiotics in 2022 in (A)**
 220 **ESBL-EC and (B) non-ESBL-EC.** See supplementary Table 1 for a complete list of antibiotics
 221 with their full name.
 222

223
 224 **Independence of individual resistance traits**

225 The observed distribution of the number of resistances per isolate significantly differed from
 226 the simulated distribution under the hypothesis of independence (p -value = $6.81 \cdot 10^{-3}$,
 227 Kolmogorov-Smirnov test), suggesting that individual resistances were not independent
 228 (Figure 2). In the observed dataset, 39% of isolates were pansusceptible, compared to 9% in
 229 the simulated dataset. Similar results were obtained when comparing the distributions of the
 230 number of resistances per isolate in observed and simulated data from 2018 to 2021 (Figure
 231 S3). We also compared the distributions separately for ESBL-EC and non-ESBL-EC from 2018
 232 to 2022 (Figure S4), underlining that the difference was mostly driven by non-ESBL-EC.



233
 234 **Figure 2: Distribution of the number of resistances per isolate in 2022 for all isolates.**
 235 The red line represents the observed dataset, and the grey lines represent the simulated
 236 datasets.

237
 238 **Multiresistance pattern selection**

239 For ESBL-EC, the *A priori* algorithm initially identified 52 824 patterns in 2018 and 123 116
 240 patterns in 2022, with an increasing trend over the years (p-value=0.01, Pearson test) (Table
 241 2). For non-ESBL-EC, the algorithm initially generated 2 529 patterns in 2018 and 4 515
 242 patterns in 2022, with a non-significant increasing trend (p-value=0.06, Pearson test).

243 For 2022, the eSup cut-off values were 0.271 for ESBL-EC isolates and 0.034 for non-ESBL-
 244 EC, meaning that a pattern was selected if it appeared in at least 27.1% of ESBL-EC or 3.4%
 245 of non-ESBL-EC. This value was relatively stable over time for both ESBL (range: 23.6-27.1%,
 246 p-value=0.22, Mann-Kendall test) and non-ESBL-EC (range: 2.9-3.4%, p-value=0.13, Mann-
 247 Kendall test).

248 The cLift cut-off value for ESBL-EC and non-ESBL-EC was respectively 1.058 and 1.041 in
 249 2022, meaning that a pattern was selected if it was 5.8% (resp. 4.1%) more frequent than
 250 expected by chance under the assumption of resistance independence in ESBL-EC (resp. non-
 251 ESBL-EC). These cut-offs were again relatively stable over time for both ESBL-EC (p-
 252 value=0.46, Mann-Kendall test) and non-ESBL-EC (p-value=0.09, Mann-Kendall test).

253 The pruning step selected respectively 1 770 (1.43% of patterns) and 93 (2.06%) patterns for
 254 ESBL-EC and non-ESBL-EC in 2022. The number of selected patterns had an increasing trend
 255 from 2018 to 2022 for both ESBL-EC (p-value=0.03, Pearson test) and non-ESBL-EC (p-
 256 value=0.05, Pearson test).

257
 258 **Table 2: Number of multiresistance patterns selected by association-set mining for each**
 259 **year and phenotype subset.** For example, in 2018 ESBL-EC, 52 736 patterns were identified.
 260 Cut-off values were set at eSup \geq 0.257 and cLift \geq 1.076, meaning that a pattern was retained
 261 if it appeared in at least 25.7% of isolates and occurred 7.6% more frequently than expected
 262 under the assumption of independence between resistance traits. After pruning, 483 patterns
 263 were selected.

Phenotype	Year	Number of patterns initially	eSup cut-off value	cLift cut-off value	Number of patterns selected
-----------	------	------------------------------	--------------------	---------------------	-----------------------------

		generated by the Apriori algorithm			after pruning
ESBL	2018	52 736	0.257	1.076	483
	2019	86 454	0.236	1.070	1 234
	2020	106 625	0.242	1.073	1 268
	2021	115 425	0.262	1.065	1 921
	2022	123 116	0.271	1.058	1 770
Non-ESBL	2018	2 527	0.030	1.056	59
	2019	3 936	0.029	1.051	82
	2020	3 756	0.030	1.052	75
	2021	4 945	0.031	1.045	88
	2022	4 502	0.034	1.041	93

264

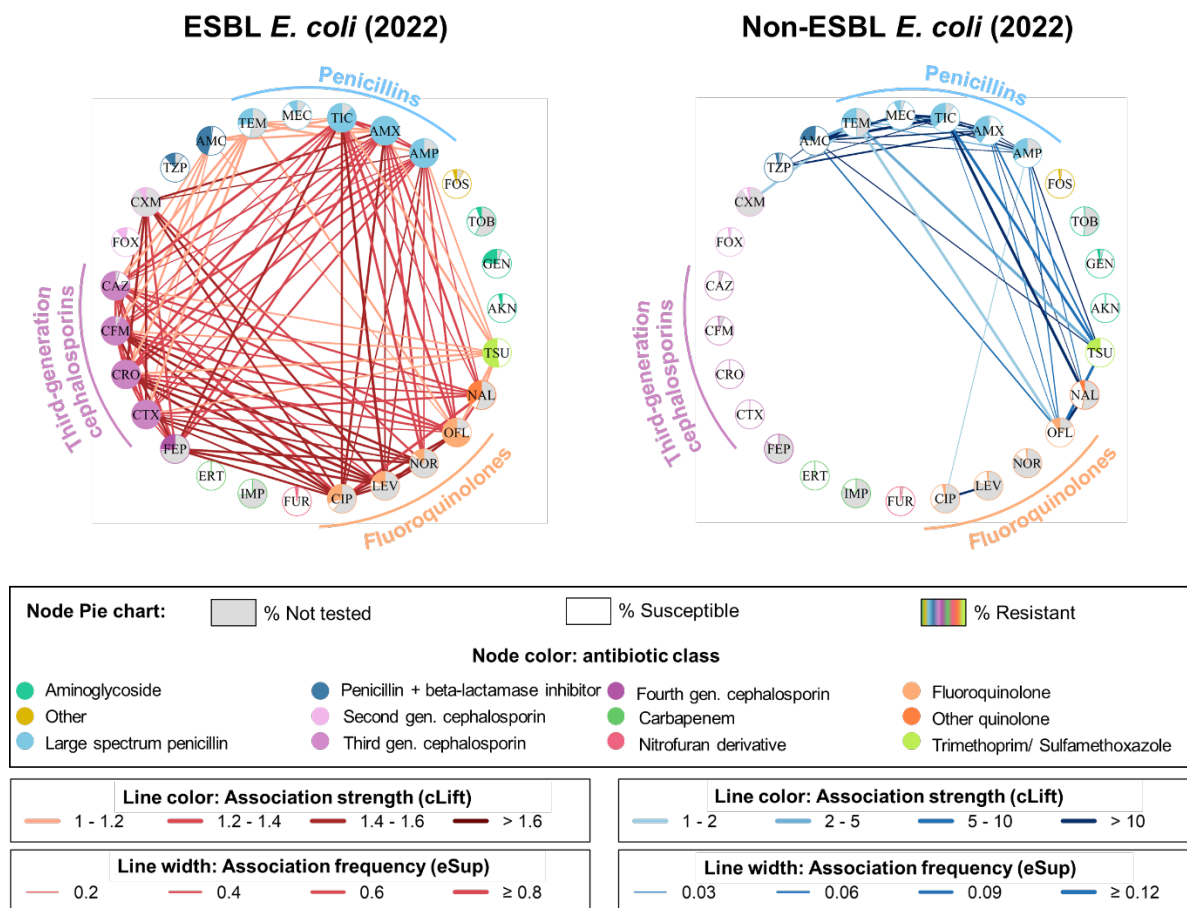
265

266 **Networks of resistance associations**

267 *Resistance associations networks have higher density for ESBL-EC*

268 Resistance associations networks were much denser in ESBL-EC than non-ESBL-EC, with
 269 densities of respectively 0.301 and 0.100 in 2022 (Figure 3). As expected, resistance
 270 associations in ESBL-EC involved mainly penicillins, third-generation cephalosporins and
 271 fluoroquinolones. In non-ESBL-EC, strong resistance associations were found between
 272 penicillins, combinations of penicillin and beta-lactamase inhibitor and quinolones. Regarding
 273 first-line antibiotics, almost no significant association involving nitrofurantoin, fosfomicin,
 274 mecillinam nor any aminoglycoside was found in both ESBL- and non-ESBL-EC. However,
 275 trimethoprim/sulfamethoxazole was associated with third-generation cephalosporins in ESBL-
 276 EC and with penicillins in non-ESBL-EC.

277



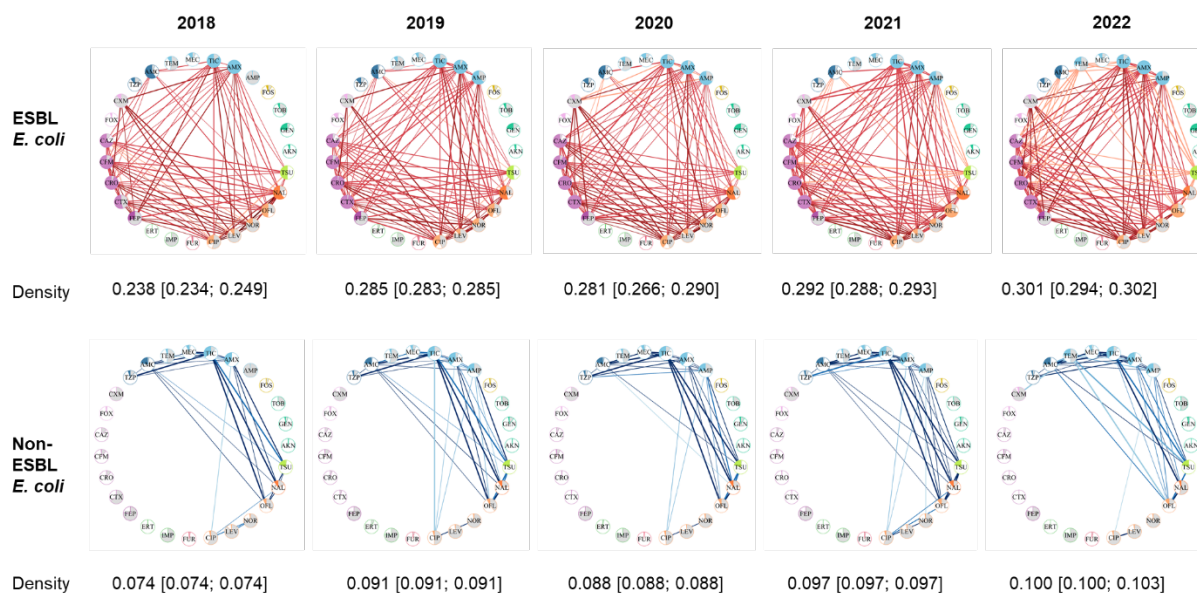
278

279 **Figure 3: Networks generated from ESBL-EC (A) and non-ESBL-EC (B) in 2022.** Patterns
 280 were decomposed into nodes (antibiotics) and edges. Nodes are colored with a pie chart: the
 281 grey part is the proportion of isolates not tested for this antibiotic, the white part is the proportion
 282 of isolates susceptible to this antibiotic and the colored part is the proportion of isolates
 283 resistant to this antibiotic. Node color reflects the antibiotic class. Edge color is darker with a
 284 high cLift value, meaning that the two antibiotics are substantially more frequently together in
 285 a resistance pattern than expected if resistance traits were independent. Edge width is higher
 286 with a high eSup value, meaning that the two antibiotics are frequently found together in a
 287 resistance pattern. See supplementary Table 1 for a complete list of antibiotics with their full
 288 name.

289

290 Network density increases over time for both ESBL-EC and non-ESBL-EC

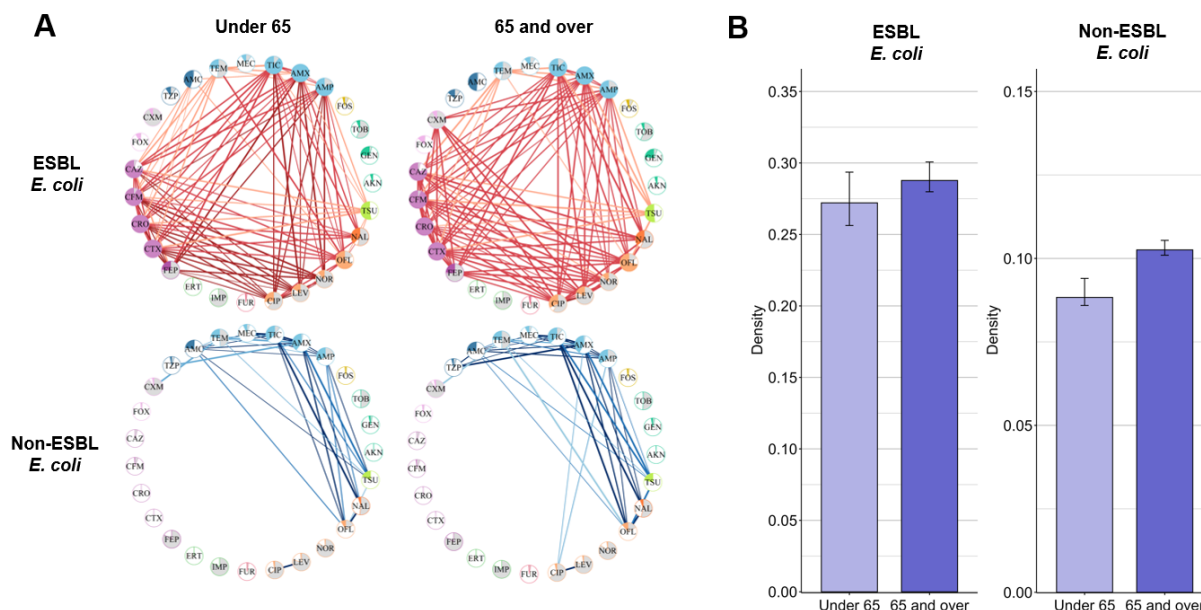
291 Network density increased over time, from 0.238 [0.234; 0.249] in 2018 to 0.301 [0.294; 0.302]
 292 in 2022 for ESBL-EC (p-value=0.06, Pearson test), and from 0.074 [0.074; 0.074] in 2018 to
 293 0.100 [0.100; 0.103] in 2022 for non-ESBL-EC (p-value=0.04, Pearson test) (Figure 4).



294
 295 **Figure 4: Networks of resistance associations from 2018 to 2022.** Median density and 95%
 296 confidence interval calculated using: (i) for 2018, 10 bootstrapped datasets, (ii) for 2019 to
 297 2022, 10 subsamples randomly drawn to match the size of the 2018 dataset. See
 298 supplementary Table 1 for a complete list of antibiotics with their full name.

299
 300 Network density is higher in 65+ years old

301 For non-ESBL-EC, resistance associations networks were denser in individuals aged 65 and
 302 over than in individuals under 65, with median densities of respectively 0.103 [0.103; 0.105]
 303 and 0.088 [0.088; 0.091] in 2022 (Figure 5B). For ESBL-EC, the median network density was
 304 not significantly different between 65+ years old, at 0.289 [0.280; 0.301], and –65 years old, at
 305 0.275 [0.261; 0.294]. The ESBL-EC networks of 65+ individuals mainly involved additional
 306 associations of cefuroxime with penicillins (amoxicillin, ampicillin), third and fourth generation
 307 cephalosporin (cefotaxime, cefepime) and fluoroquinolones (ciprofloxacin, levofloxacin,
 308 norfloxacin) (Figure 5A). Similar results were found when analysing data from 2018 to 2021
 309 (Figure S5).



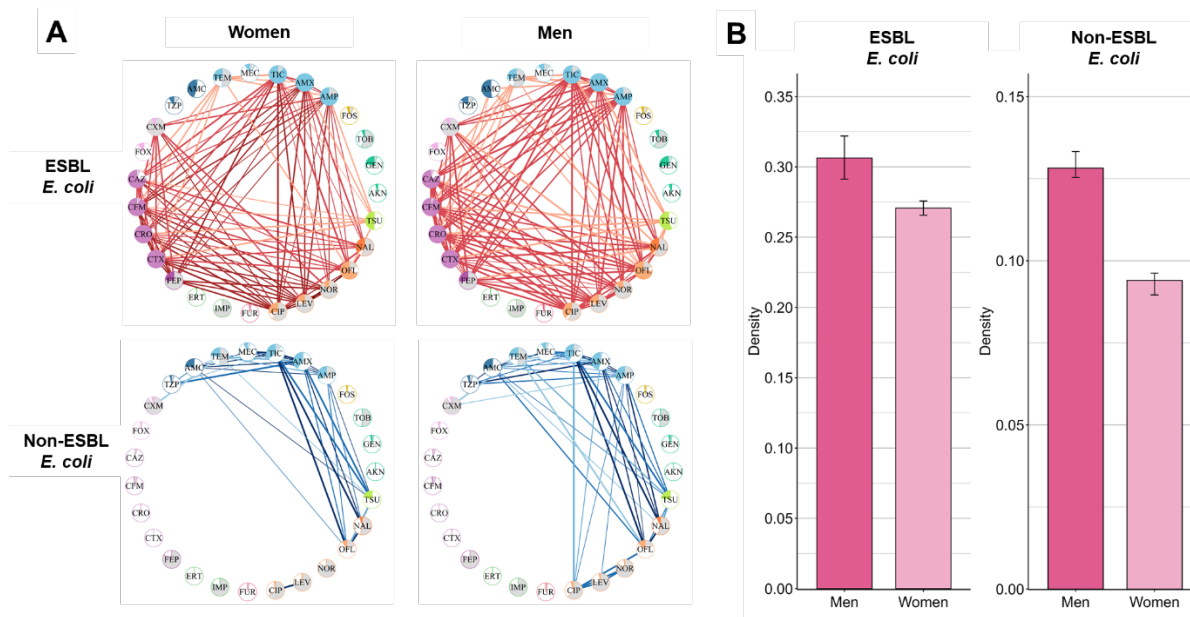
310

311 **Figure 5: (A) Networks of resistance associations for individuals under 65 and**
312 **individuals 65 and over in 2022. (B) Barplots of median network density for both age**
313 **groups.** Error bars indicate confidence interval: for individuals over 65, calculated using 10
314 subsamples randomly generated at the size of the dataset of individuals under 65; for
315 individuals under 65, calculated using 10 bootstrapped datasets from the complete dataset of
316 individuals under 65. See supplementary Table 1 for a complete list of antibiotics with their full
317 name.

318

319 Network density is higher in men

320 In 2022 for ESBL-EC, network density was higher in men than in women, with respective
321 medians of 0.305 [0.291; 0.322] and 0.271 [0.266; 0.276] (Figure 6B). The same result was
322 observed in non-ESBL-EC, with median densities of 0.128 [0.125; 0.133] and 0.094 [0.090;
323 0.096] for men and women respectively. The ESBL-EC networks of men mainly involved
324 additional associations of cefuroxime with penicillins (amoxicillin, ampicillin), third and fourth
325 generation cephalosporin (cefotaxime, cefepime) and fluoroquinolones (ciprofloxacin,
326 levofloxacin, norfloxacin) (Figure 6A). Similar results were found when analysing data from
327 2018 to 2021 (Figure S6).



328

329 **Figure 6: (A) Networks of resistance associations for men and women in 2022. (B)**
330 **Barplots of the median network density for men and women.** Error bars indicate
331 confidence intervals: for women, calculated using 10 datasets generated at the size of the
332 men's dataset; for men, calculated using 10 bootstrapped datasets from the complete men's
333 dataset. See supplementary Table 1 for a complete list of antibiotics with their full name.

334

335 Sensitivity analysis

336 Figure S7 depicts resistance association networks from 2019 to 2022, obtained with resampled
337 datasets to ensure that the relative contribution of each region is constant over time and
338 proportional to its population. As in the main analysis, networks reconstructed for ESBL-EC
339 isolates were much denser than for non-ESBL-EC. For ESBL-EC, a significant increase in
340 density was again observed over time, from 0.240 to 0.300 (p -value=0.004, Pearson test),
341 although this was not the case any more for non-ESBL-EC.

342

343 Discussion

344 In this study we identified resistance associations in community-acquired UTI *E. coli* isolates,
345 using a large French surveillance database. Across all years, and as expected, ESBL-EC
346 showed a higher number of resistance associations, particularly involving penicillins,
347 fluoroquinolones and third-generation cephalosporins. In both ESBL and non-ESBL-EC, the
348 number of resistance associations increased from 2018 to 2022, and men and individuals aged
349 65 and over showed more resistance associations across all years.

350 We compared the observed distribution of the number of resistances per isolate with a
351 simulated dataset assuming the hypothesis of mutual independence of resistance traits (8) and
352 found significant differences. This finding aligns with Chang et al., 2015, which reported that
353 MDR occurred at frequencies inconsistent with the hypothesis of mutual independence of
354 resistance traits for multiple bacteria including *E. coli* (5). It provides further evidence for
355 biological or genetic mechanisms favouring the co-occurrence of multiple resistance traits in
356 *E. coli*.

357 Resistance rates were generally low for first-line antibiotics recommended in France for
358 community-acquired UTIs, such as fosfomycin, pivmecillinam or nitrofurantoin (13). Analysis
359 of ESBL-EC resistance associations networks highlighted major associations between
360 penicillins (+/- inhibitors), cephalosporins, fluoroquinolones and cotrimoxazole. This pattern
361 may correspond to CTX-M, the most prevalent ESBL in *E. coli*, as well as TEM or SHV
362 enzymes, which all hydrolyse penicillins and cephalosporins. CTX-M are mostly susceptible to
363 piperacillin-tazobactam (~80–90%), while this is more variable in TEM/SHV. They are both
364 highly resistant to fluoroquinolones (80–90%), and moderately resistant (~50%) to
365 cotrimoxazole. Although the mechanisms of resistance to beta-lactams and fluoroquinolones
366 are distinct, fluoroquinolone resistance genes (e.g., qnr or aac(6')-Ib-cr) are present on mobile
367 genetic elements that also carry beta-lactam resistance genes, which allows multiple
368 resistances to be transmitted jointly (14). Association-set mining may represent an efficient
369 approach to better understand the dynamics of *E. coli* multiresistance patterns and make
370 hypothesis regarding the underlying genetic evolutions, to be confirmed by whole genome
371 sequencing analysis.

372 Using association-set mining, we found that the number of resistance associations increased
373 from 2018 to 2022 in both ESBL-EC and non-ESBL-EC. Despite this overall increasing trend,
374 a temporary decrease was observed in 2020, consistently with the observed reduction in MDR
375 *E. coli* during the Covid-19 pandemic in France (15). We explored the impact of spatial
376 resistance epidemiology on our findings through a sensitivity analysis using datasets where
377 the number of isolates from each region was proportional to its population. This approach
378 confirmed the nationwide increase of resistance associations within community-acquired
379 ESBL-EC UTIs. However, in this sensitivity analysis, the increase in non-ESBL-EC isolates
380 disappeared. Consequently, the changes in regional relative contributions may have played a
381 role in the temporal increase of the number of resistance associations we observed in non-
382 ESBL-EC isolates. In particular, the contribution of several densely-populated and
383 internationally-connected French regions, including Ile-de-France (Paris area), increased over
384 time. Isolates from these regions may present more resistance associations.

385 During 2018-2022, the global consumption of antibiotics in primary care decreased in France
386 from 22.9 to 21.6 defined daily doses (DDD) per 10,000 inhabitant per day. This trend was
387 observed for large-spectrum penicillins, cephalosporins and quinolones, but not for
388 associations of penicillins, sulphonamides and trimethoprim which remained stable. In this
389 context, the increasingly dense MDR patterns we observe among community *E. coli* may be

390 driven not only by antibiotic use but also by other multiple human, animal, and environmental
391 factors (16).

392 Isolates coming from men and individuals older than 65 had more resistance associations,
393 even after adjusting for different sample sizes. This finding is consistent with multiple studies
394 showing that older individuals are particularly exposed to MDR bacteria notably because of
395 immunosenescence, frequent multiple chronic comorbidities and the associated requirement
396 for care. They are more frequently exposed to hospitals and other healthcare facilities,
397 increasing their contact with resistant bacteria (17,18). In contrast, limited data is available
398 regarding gender-specific differences in MDR, although some studies suggested that men
399 have more risks than women to be infected with resistant bacteria (19–21). In our study, men-
400 specific networks had additional associations involving cefuroxime. In hospital settings,
401 cefuroxime is routinely used as surgical prophylaxis to reduce the risk of postoperative
402 infections, particularly in prostate resection, a frequent procedure in older men (22). Moreover,
403 UTIs in men are more commonly associated with structural abnormalities like renal stones and
404 malignancies, which can complicate the treatment, lead to increased antibiotic use and
405 contribute to the development of resistance (23). This could partially explain the additional
406 associations.

407 Our study is subject to certain limitations that should be taken into account.

408 First, the size of the PRIMO datasets generally increased every year, notably due to the
409 increase of the scope of the PRIMO mission. However, the 2020 dataset was slightly smaller
410 than the 2019 one (450 135 vs. 450 820 isolates). This could be partially explained by the
411 COVID-19 pandemic which disrupted healthcare systems and microbiological surveillance
412 practices in 2020. Community clinical laboratories prioritized COVID-19 management,
413 potentially reducing their capacity to collect and record AST (24). While network size is known
414 to impact its density (25), in our analyses, we accounted for varying dataset sizes by randomly
415 drawing subsamples at the size of the 2018 dataset.

416 Second, the PRIMO surveillance system contained isolates that were collected in community
417 clinical laboratories; however, we cannot be certain that it was representative of the total
418 community-acquired *E. coli* UTI in France between 2018 and 2022. Some isolates could have
419 been acquired in healthcare settings, especially for older individuals who are frequently
420 hospitalized. Moreover, while we were unable to collect clinical information, some *E. coli* were
421 potentially isolated from asymptomatic bacteriuria of colonised patients.

422 Third, our results are valid for *E. coli* isolates only, and not for other Enterobacterales,
423 potentially limiting their generalizability. We chose to focus the study on *E. coli* as it represented
424 85.0% of all isolates in the dataset.

425 Fourth, in the PRIMO database, some antibiotics were tested on a very small number of
426 isolates. To minimize bias, we included only antibiotics tested on at least 10% of isolates
427 across all datasets. We found stable results for most antibiotics over time. However, this
428 limitation may explain the changing results regarding ampicillin from 2018 to 2019. In 2018,
429 ampicillin was tested on only 2% of isolates, which likely prevented the algorithm from
430 identifying significant associations involving this antibiotic. By 2019, ampicillin was tested on
431 more isolates, allowing the algorithm to detected such associations. Moreover, the antibiotics
432 tested were determined by the laboratories, and might not align with hospital practices, while
433 consistent with practices in outpatient care.

434 Fifth, the *Apriori* algorithm is a highly efficient method supported by multiple studies (7–9).
435 However, combining multiple data mining approaches, as recently suggested (9), could have
436 enhanced our understanding of MDR. In addition, *Apriori* generates numerous patterns,

437 requiring careful pruning with appropriate quality measures and cut-off values. While many
438 studies rely solely on support (26), this would have favoured frequent resistance patterns, such
439 as those involving amoxicillin, while overlooking rarer but significant associations. We therefore
440 chose lift as a robust complementary metric (7); however, numerous other metrics or metric
441 combinations could be proposed (27,28), potentially yielding slightly different results. Missing
442 data may also have influenced *Apriori* results by altering resistance prevalence distributions
443 and associations (29), although this was addressed by the use of adapted quality measures
444 (eSup and cLift) (30). Finally, cut-off values also influence pattern selection (26). Our
445 percentile-based approach led us to exclude patterns with a lift below 1, which could have
446 highlighted MDR patterns occurring less frequently than expected.

447 Despite these limitations, our study provided a novel and detailed analysis of multiresistance
448 patterns in community-acquired *E. coli* UTI collected from a French national surveillance
449 system. We explored the temporal evolution of resistance associations, gender-specific and
450 age-specific differences, which to our knowledge, had not been previously analysed. Our
451 findings confirmed that this method is effective for identifying resistance associations in
452 antibiotic resistance surveillance data. With further research, this work could provide insights
453 for antibiotic stewardship strategies in alignment with known resistance associations in
454 community-acquired *E. coli* UTIs. In the context of rising antibiotic resistance, optimizing the
455 use of current medications is crucial, as few new antibiotics have been developed in the past
456 two decades (31).

457 Future research could use other machine learning approaches to further analyse the PRIMO
458 datasets and get a deeper understanding of resistance associations. Moreover, it would be
459 interesting to examine the evolution of resistance associations in future years. In addition,
460 extending our approach to other pathogens beyond *E. coli* could offer a broader perspective
461 on multiresistance dynamics. Finally, future work could investigate the potential linkage
462 between these phenotypic resistance associations and genetic co-resistance mechanisms.

463

464 **List of abbreviations**

465 AMR: Antimicrobial-resistant

466 AST: Antibiotic susceptibility testing

467 cLift: conditional lift

468 DDD: defined daily dose

469 ESBL-EC: Extended-spectrum beta-lactamase producing *E. coli*

470 eSup: expected support

471 MDR: multidrug-resistant

472 UTI: urinary tract infection

473

474 **Declarations**

475 **Ethics approval and consent to participate**

476 Because the analysis was performed using anonymized surveillance data, ethical consent
477 was not required according to the French Data Protection Act. The dataset was accredited by
478 the French National Data Protection Commission (CNIL 1,685,003), and the fully
479 anonymized data waiver for informed consent of study participants was applied.

480 **Availability of data and materials**

481 All code used in the analysis are available in the following GitHub repository:
482 https://github.com/elisehodbert/exploring_MDR_patterns

483 **Competing interest**

484 Dr Birgand reported receiving grants from Santé Publique France during the conduct of the
485 study. No other disclosure was reported.

486 Disclaimer: The views expressed are those of the authors and not necessarily those of Santé
487 Publique France or the ANR.

488 **Funding**

489 This work received funding from the French government through the National Research
490 Agency project COMBINE ANR –22-PAMR-0003.

491 Role of the Funder/Sponsor: The sponsors had no role in the design and conduct of
492 the study; collection, management, analysis, and interpretation of the data;
493 preparation, review, or approval of the manuscript; and decision to submit the
494 manuscript for publication.

495 **Authors' contributions**

496 Dr Birgand had full access to all of the data in the study and takes responsibility for the
497 integrity of the data and the accuracy of the data analysis.

498 Concept and design: Hodbert, Lemenand, Temime, Birgand.

499 Acquisition, analysis, or interpretation of data: Hodbert, Thibaut, Coeffic, Lemenand,
500 Temime, Boutoille, Corvec, Birgand.

501 Drafting of the manuscript: Hodbert, Birgand, Temime.

502 Critical revision of the manuscript for important intellectual content: Hodbert, Lemenand,
503 Corvec, Boutoille, Birgand, Temime.

504 Statistical analysis: Hodbert, Coeffic, Temime

505 Obtained funding: Birgand, Temime.

506 Administrative, technical, or material support: Birgand, Temime.

507 Supervision: Temime, Lemenand, Birgand.

508 **Acknowledgements**

509 **French clinical laboratories nationwide network:** A. Vrain, LABOUEST, Ancenis ; P.
510 Andorin, BIOLARIS, Laval ; J. Besson, BIOLIANCE, Nantes ; F. Maillet, BIOLOIRE, Nantes ;
511 G. de Gastines, BIORYLIS, La Roche sur Yon ; P.-Y. Léonard, LABORIZON MAINE ANJOU,
512 Le Mans ; M. Guery, SEVRE BIOLOGIE, Les Herbiers ; V. Plong, ACTIV'BIOLAB, Challans ;
513 N. Le Moing, RESEAUBIO, La Chapelle sur Erdre ; F. Kerdavid, ALLIANCE ANABIO,
514 Melesse ; A.-S. Reinhard, BIOCELIANDE, Montauban de Bretagne ; S. Gillard, BIOLOR,

515 Lorient ; B. Guesnon, BIORANCE, Saint Malo ; B. Gestin, LABAZUR, Chateaulin ; H.
516 Banctel, SBL BIO, Saint Brieuc ; D. Laforest, BIOCENTRE, Coutances ; E. Pradier,
517 CARMES, Caen ; S. Arsene, CERBALLIANCE NORMANDIE, Lisieux ; A. Holstein, ABO +,
518 Tours ; D. Bouvet, BIO MEDI QUAL Centre, Vierzon ; B. Dubet, LBM DUBET, Neuville aux
519 bois ; C. Laudignon, MLAB, Saran ; E. Jobert, MIRIALIS, Annecy ; R. Gebeile, DYNABIO,
520 Lyon ; S. Poyet, DYOMEDEA, Lyon ; G. Deleglise, GENBIO, Clermont Ferrand ; N.
521 Lecordier, ANALYSIS 88, Epinal ; S. Fougnot, ATOUTBIO, Nancy ; E. Grandsire, DYNALAB,
522 Romilly sur Seine ; J.-P. Rault, ESPACEBIO, Metz ; G. Defrance, BIOFUTUR, L'isle Adam ;
523 J Cadenet, BIOVSM, Torcy ; L Libier, AX BIO OCEAN, Bayonne ; A Touzalin, BIO17, La
524 Rochelle ; A Allery, BIO86, Poitiers ; H Valade, BIOFFICE, Bordeaux ; G. Payro,
525 CERBALLIANCE-CHARENTE, Saintes ; D. Boraud, EXALAB Groupe LABEXA, Le Haillan ;
526 E. Parisi, VIALLE, Bastia ; F. Alluin, 2A2B, Porto Vecchio ; J. Bayette, LABOSUD,
527 Montpellier ; M.-F. Aran, BIOPOLE66, Perpignan ; P. Stevenin, BIOAXIOME, Avignon ; A.
528 François, BIOESTEREL, Mandelieu-la-Napoule ; G. Gay, LABOSUD PROVENCE, Marseille
529 ; O. Duquesnoy, BIOPATH, Dunkerque ; V. Sainte Rose, BIOLAB MARTINIQUE, Fort de
530 France ; F. Dos Santos, BIOSANTE, Schoelcher. F. Artur, BIOCEANE, Le Havre. E.
531 Mbenga, BIOLAB, Beaune ; A. Desjardins, EVORIAL, Nevers ; M.-C. Paolini, BDCBM5,
532 Besançon ; P. Marchenay, LPA18, Vesoul.

533 **Group Information:** A complete list of the members of the French Clinical Laboratories
534 Nationwide Network appears in Supplement.

535 **Additional Contributions:** Anne Berger-Carbonne, MD, Laetita Gambotti, and Sylvie
536 Maugat, MSc (from Santé Publique France), supported the data. These individuals were not
537 compensated for their contributions.

538

539

540 **References**

- 541 1. Cosgrove SE. The Relationship between Antimicrobial Resistance and Patient Outcomes:
542 Mortality, Length of Hospital Stay, and Health Care Costs. *Clin Infect Dis*. 15 janv
543 2006;42(Supplement_2):S82-9.
- 544 2. Holmes AH, Moore LSP, Sundsfjord A, Steinbakk M, Regmi S, Karkey A, et al.
545 Understanding the mechanisms and drivers of antimicrobial resistance. *The Lancet*. 9 janv
546 2016;387(10014):176-87.
- 547 3. Naghavi M, Vollset SE, Ikuta KS, Swetschinski LR, Gray AP, Wool EE, et al. Global
548 burden of bacterial antimicrobial resistance 1990–2021: a systematic analysis with
549 forecasts to 2050. *The Lancet* [Internet]. 16 sept 2024 [cité 23 sept 2024];0(0). Disponible
550 sur: [https://www.thelancet.com/journals/lancet/article/PIIS0140-6736\(24\)01867-](https://www.thelancet.com/journals/lancet/article/PIIS0140-6736(24)01867-1/fulltext?dgcid=twitter_organic_gbd24_lancet)
551 [1/fulltext?dgcid=twitter_organic_gbd24_lancet](https://www.thelancet.com/journals/lancet/article/PIIS0140-6736(24)01867-1/fulltext?dgcid=twitter_organic_gbd24_lancet)
- 552 4. Murray CJL, Ikuta KS, Sharara F, Swetschinski L, Aguilar GR, Gray A, et al. Global
553 burden of bacterial antimicrobial resistance in 2019: a systematic analysis. *The Lancet*. 12
554 févr 2022;399(10325):629-55.
- 555 5. Chang HH, Cohen T, Grad YH, Hanage WP, O'Brien TF, Lipsitch M. Origin and
556 proliferation of multiple-drug resistance in bacterial pathogens. *Microbiol Mol Biol Rev*
557 *MMBR*. mars 2015;79(1):101-16.
- 558 6. Tzouvelekis LS, Markogiannakis A, Psychogiou M, Tassios PT, Daikos GL.
559 Carbapenemases in *Klebsiella pneumoniae* and other Enterobacteriaceae: an evolving
560 crisis of global dimensions. *Clin Microbiol Rev*. oct 2012;25(4):682-707.
- 561 7. Cazer CL, Al-Mamun MA, Kaniyamattam K, Love WJ, Booth JG, Lanzas C, et al. Shared
562 Multidrug Resistance Patterns in Chicken-Associated *Escherichia coli* Identified by
563 Association Rule Mining. *Front Microbiol* [Internet]. 2019 [cité 2 oct 2023];10. Disponible
564 sur: <https://www.frontiersin.org/articles/10.3389/fmicb.2019.00687>
- 565 8. Cazer CL, Westblade LF, Simon MS, Magleby R, Castanheira M, Booth JG, et al. Analysis
566 of Multidrug Resistance in *Staphylococcus aureus* with a Machine Learning-Generated
567 Antibiogram. *Antimicrob Agents Chemother*. 18 mars 2021;65(4):10.1128/aac.02132-20.
- 568 9. Mosaddegh A, Angel CC, Craig M, Cummings KJ, Cazer CL. An exploration of descriptive
569 machine learning approaches for antimicrobial resistance: Multidrug resistance patterns in
570 *Salmonella enterica*. *Prev Vet Med*. sept 2024;230:106261.
- 571 10. Lemenand O, Thibaut-Jovelin S, Coeffic T, Caillon J. PRIMO : Résultats 2022 -
572 Surveillance de la résistance bactérienne aux antibiotiques en soins de ville et en Ehpad
573 [Internet]. Repias : Réseau de Prévention des Infections Associées aux Soins. 2024 [cité
574 20 déc 2024]. Disponible sur: [https://www.preventioninfection.fr/actualites/prim0-resultats-](https://www.preventioninfection.fr/actualites/prim0-resultats-2022-surveillance-de-la-resistance-bacterienne-aux-antibiotiques-en-soins-de-ville-et-en-ehpad/)
575 [2022-surveillance-de-la-resistance-bacterienne-aux-antibiotiques-en-soins-de-ville-et-en-](https://www.preventioninfection.fr/actualites/prim0-resultats-2022-surveillance-de-la-resistance-bacterienne-aux-antibiotiques-en-soins-de-ville-et-en-ehpad/)
576 [ehpad/](https://www.preventioninfection.fr/actualites/prim0-resultats-2022-surveillance-de-la-resistance-bacterienne-aux-antibiotiques-en-soins-de-ville-et-en-ehpad/)
- 577 11. Cattoir V. Comité de l'Antibiogramme de la Société Française de Microbiologie
578 [Internet]. Société Française de Microbiologie. 2022 [cité 5 févr 2025]. Disponible sur:
579 [https://www.sfm-microbiologie.org/boutique/_comite-de-lantibiogramme-de-la-sfm-ca-sfm-](https://www.sfm-microbiologie.org/boutique/_comite-de-lantibiogramme-de-la-sfm-ca-sfm-v1-0-juin-2024/)
580 [v1-0-juin-2024/](https://www.sfm-microbiologie.org/boutique/_comite-de-lantibiogramme-de-la-sfm-ca-sfm-v1-0-juin-2024/)
- 581 12. Dongre J, Prajapati GL, Tokekar SV. The role of Apriori algorithm for finding the
582 association rules in Data mining. In: 2014 International Conference on Issues and

- 583 Challenges in Intelligent Computing Techniques (ICICT) [Internet]. Ghaziabad, India:
584 IEEE; 2014 [cité 4 juin 2024]. p. 657-60. Disponible sur:
585 <http://ieeexplore.ieee.org/document/6781357/>
- 586 13. Caron F, Galperine T, Flateau C, Azria R, Bonacorsi S, Bruyère F, et al. Practice
587 guidelines for the management of adult community-acquired urinary tract infections. *Med*
588 *Mal Infect.* 2018;48(5):327-58.
- 589 14. Strahilevitz J, Jacoby GA, Hooper DC, Robicsek A. Plasmid-Mediated Quinolone
590 Resistance: a Multifaceted Threat. *Clin Microbiol Rev.* oct 2009;22(4):664-89.
- 591 15. Lemenand O, Coeffic T, Thibaut S, Cotinat MC, Caillon J, Birgand G. Decreasing
592 proportion of extended-spectrum beta-lactamase among *E. coli* infections during the
593 COVID-19 pandemic in France. *J Infect.* 1 déc 2021;83(6):664-70.
- 594 16. Paumier A, Asquier-Khati A, Thibaut S, Coeffic T, Lemenand O, Larramendy S, et al.
595 Assessment of Factors Associated With Community-Acquired Extended-Spectrum β -
596 Lactamase-Producing *Escherichia coli* Urinary Tract Infections in France. *JAMA Netw*
597 *Open.* 1 sept 2022;5(9):e2232679.
- 598 17. Gajdács M, Ábrók M, Lázár A, Burián K. Urinary Tract Infections in Elderly Patients: A
599 10-Year Study on Their Epidemiology and Antibiotic Resistance Based on the WHO
600 Access, Watch, Reserve (AWaRe) Classification. *Antibiotics.* sept 2021;10(9):1098.
- 601 18. Theodorakis N, Feretzakis G, Hitas C, Kreouzi M, Kalantzi S, Spyridaki A, et al.
602 Antibiotic Resistance in the Elderly: Mechanisms, Risk Factors, and Solutions.
603 *Microorganisms.* oct 2024;12(10):1978.
- 604 19. Brandl M, Hoffmann A, Willrich N, Reuss A, Reichert F, Walter J, et al. Bugs That Can
605 Resist Antibiotics but Not Men: Gender-Specific Differences in Notified Infections and
606 Colonisations in Germany, 2010–2019. *Microorganisms* [Internet]. 2021 [cité 18 nov
607 2024];9. Disponible sur: [https://consensus.app/papers/bugs-that-resist-antibiotics-
608 genderspecific-differences-brandl/2b9390f598b05d908488d513c5c4a2b3/](https://consensus.app/papers/bugs-that-resist-antibiotics-genderspecific-differences-brandl/2b9390f598b05d908488d513c5c4a2b3/)
- 609 20. Khanal N, Cortie CH, Story C, Jones S, Mansfield KJ, Miyakis S, et al. Multidrug
610 resistance in urinary *E. coli* higher in males compared to females. *BMC Urol.* 18 nov
611 2024;24(1):255.
- 612 21. Costa T, Linhares I, Ferreira R, Neves J, Almeida A. Frequency and Antibiotic
613 Resistance of Bacteria Implicated in Community Urinary Tract Infections in North Aveiro
614 Between 2011 and 2014. *Microb Drug Resist.* mai 2018;24(4):493-504.
- 615 22. Ferrie B, Scott R. Prophylactic cefuroxime in transurethral resection. *Urol Res.*
616 2004;12:279-81.
- 617 23. Wagenlehner FME, Weidner W, Pilatz A, Naber KG. Urinary tract infections and
618 bacterial prostatitis in men. *Curr Opin Infect Dis.* févr 2014;27(1):97.
- 619 24. Durant TJS, Peaper DR, Ferguson D, Schulz WL. Impact of COVID-19 Pandemic on
620 Laboratory Utilization. *J Appl Lab Med.* 1 nov 2020;5(6):1194-205.
- 621 25. Snijders T, Borgatti S. Non-Parametric Standard Errors and Tests for Network
622 Statistics. *Connections.* janv 1999;22.

- 623 26. Martínez-Ballesteros M, Martínez-Álvarez F, Lora AT, Santos JCR. Selecting the best
624 measures to discover quantitative association rules. *Neurocomputing*. 2014;126:3-14.
- 625 27. Datta S, Mali K. Significant Association Rule Mining with High Associability. In: 2021
626 5th International Conference on Intelligent Computing and Control Systems (ICICCS)
627 [Internet]. 2021 [cité 12 déc 2024]. p. 1159-64. Disponible sur:
628 <https://ieeexplore.ieee.org/document/9432237>
- 629 28. Tan PN, Kumar V, Srivastava J. Selecting the right interestingness measure for
630 association patterns. In: Proceedings of the eighth ACM SIGKDD international conference
631 on Knowledge discovery and data mining [Internet]. New York, NY, USA: Association for
632 Computing Machinery; 2002 [cité 28 mars 2024]. p. 32-41. (KDD '02). Disponible sur:
633 <https://doi.org/10.1145/775047.775053>
- 634 29. Brown ML, Kros JF. Data mining and the impact of missing data. *Ind Manag Data*
635 *Syst*. 1 janv 2003;103(8):611-21.
- 636 30. Calders T, Goethals B, Mampaey M. Mining itemsets in the presence of missing
637 values: 22nd ACM Symposium on Applied Computing (SAC 2007). Cho Y, Wainwright RL,
638 Haddad H, Shin SY, Koo YW, éditeurs. Proc 22nd Annu ACM Symp Appl Comput SAC
639 2007 11-15 March 2007 Seoul Korea. 2007;404-8.
- 640 31. Renwick MJ, Brogan DM, Mossialos E. A systematic review and critical assessment
641 of incentive strategies for discovery and development of novel antibiotics. *J Antibiot*
642 (Tokyo). févr 2016;69(2):73-88.
- 643