

Title

Epigenome-wide association study of cerebrospinal fluid-based biomarkers of Alzheimer's disease in cognitively normal individuals

Authors

Anke Hüls^{1,2}, Jiaqi Liu³, Chaini Konwar^{4,5}, Karen N. Conneely⁶, Allan I. Levey^{7,8}, James J. Lah^{7,8}, Aliza P. Wingo^{9,3,*}, Thomas S. Wingo^{10,11,*}

Affiliations

¹Department of Epidemiology, Rollins School of Public Health, Emory University, Atlanta, GA, USA, 30322

²Ganagarosa Department of Environmental Health, Rollins School of Public Health, Emory University, Atlanta, GA, USA, 30322

³Department of Psychiatry, University of California, Davis, Sacramento, CA USA, 95816

⁴Centre for Molecular Medicine and Therapeutics, The University of British Columbia, Vancouver BC V5Z 4H4, Canada

⁵BC Children's Hospital Research Institute, Vancouver, BC Canada V5Z 4H4

⁶Department of Human Genetics, Emory University School of Medicine, Atlanta, GA USA, 95816

⁷Goizueta Alzheimer's Disease Research Center, Emory University School of Medicine, Atlanta, GA USA, 30322

⁸Department of Neurology, Emory University School of Medicine, Atlanta, GA USA, 30322

⁹Division of Mental Health, Northern California VA, Sacramento, CA USA, 95816

¹⁰Department of Neurology, University of California, Davis, Sacramento, CA USA, 95816

¹¹Alzheimer's Disease Research Center, University of California, Davis, Sacramento, USA, 95816

*Equal contributors

Corresponding Authors

Thomas Wingo, MD

1651 Alhambra Blvd, Suite 200A

Sacramento, CA 95816

Email: twingo@ucdavis.edu

Aliza P. Wingo, MD

1651 Alhambra Blvd, Suite 200A

Sacramento, CA 95816

Email: apwingo@ucdavis.edu

Abstract (147/150 words)

INTRODUCTION. Cerebrospinal fluid (CSF) biomarkers of Alzheimer's disease (AD) are reliable predictors of future AD risk. We investigated whether pre-clinical changes in AD CSF biomarkers are reflected in blood DNA methylation (DNAm) levels in cognitively normal participants.

METHODS. We profiled blood-based DNAm with the EPIC array in participants without a diagnosis of cognitive impairment in the Emory Healthy Brain Study (EHBS; N=495) and ADNI (N=122). Their CSF A β 42, tTau, and pTau levels were quantified using Elecsys immunoassays. We conducted epigenome-wide association studies to assess associations between DNAm and CSF biomarkers of AD.

RESULTS. In EHBS, no loci were Bonferroni-significant after adjusting for confounding factors. In ADNI, two loci were significant, but they were not replicated in EHBS. There was little agreement between the top loci from EHBS and ADNI.

DISCUSSION. Our study showed little evidence of an association between differential blood-based DNAm and pre-clinical AD CSF biomarkers.

Background

Alzheimer's disease and related dementias (AD/ADRD) are the 6th leading cause of death affecting over six million people in the US, and the number is projected to grow to 13.8 million by 2060 (1,2). Individuals living with AD/ADRD experience progressively worsening cognitive impairment that compromises their quality of life and often requiring long-term day-to-day support and care (2).

Alzheimer's disease (AD) has a long asymptomatic stage that can be detected in brain imaging and cerebrospinal fluid (CSF) (3). In 2018, the National Institute on Aging and Alzheimer's Association drew a distinction between the underlying pathologic process of AD and the clinical signs and symptoms those pathologic changes may cause (i.e., subjective cognitive impairment, mild cognitive impairment [MCI], and dementia). The rationale for this distinction is the emergence of reliable AD biomarkers that can measure beta-amyloid deposition, pathologic tau, and neurodegeneration (collectively termed the ATN framework), which are detectable up to 30 years *before* symptomatic cognitive impairment (4). Identifying patients who are on the path of developing dementia is essential for early intervention and treatment. Early biomarkers of AD, e.g., CSF biomarkers (5–9), provide an opportunity to detect the first signs of disease.

In recent years, there has been a substantial increase in studies characterizing epigenetic mechanisms in AD, mainly focused on DNA methylation (DNAm) (10). In the brain, epigenetic studies suggest robust associations between DNAm and AD (11), including differential DNAm in the amyloid precursor protein (*APP*) (12), microtubule-associated protein tau (*MAPT*) (12), apolipoprotein (*APOE*) promoter region (13), homeobox A3 (*HOXA3*) (14), interleukin-1 beta (*IL-1 β*) (15), interleukin-6 (*IL-6*) (15), and claudin-5 (*CLDN5*) genes (16). While identifying AD-related epigenetic signatures in the brain can help unravel some biological mechanisms involved in the pathophysiology of AD, understanding epigenetic changes in the blood is crucial for the development of new molecular indicators for AD, given that blood collection is a minimal invasive routine procedure, which can be performed while patients are alive (17).

Several blood-based DNAm markers have been identified in association with AD, including differential DNAm in the homeobox B6 (*HOXB6*) gene in AD (18), the oxytocin (*OXT*) gene (19), the adenosine deaminase RNA-specific B2 (*ADARB2*) gene (20). One study of 202 participants from the Alzheimer's Disease Neuroimaging Initiative (ADNI) cohort identified a number of associations between blood DNAm and CSF biomarkers comparing 123 cognitively normal participants to 79 AD participants (21). Another study identified 12 DNAm sites in blood associated with CSF biomarkers among 885 participants included in the European Medical Information Framework for AD (EMIF-AD) study (22) – most of them diagnosed with mild cognitive impairment or AD. However, it is unknown whether differential DNAm is also associated with pre-clinical stages of AD.

To address this knowledge gap, we investigated whether blood DNAm was associated with CSF A β 42, phosphorylated tau (pTau), and total tau (tTau) biomarkers in 617 cognitively normal participants enrolled in the Emory Healthy Brain Study (EHBS) and the ADNI cohort. We hypothesized that pre-clinical changes in CSF biomarkers of AD will be mirrored in the blood epigenome, which could help us to better understand the biological mechanisms underlying pre-clinical changes of AD. To test this hypothesis, we conducted independent epigenome-wide association studies in each cohort followed by an epigenome-wide meta-analysis to assess the association between blood-based DNAm and CSF biomarkers of AD.

Methods

Study population

Our study is based on data from 495 individuals from the EHBS (N=450 White participants, N=45 Black participants) and 122 White individuals from ADNI classified as controls without a diagnosis of cognitive impairment (i.e., mild cognitive impairment, Alzheimer's disease or other dementias) at blood draw. Only one ADNI participant self-identified as Black and was excluded from the analysis. For EHBS, study inclusion criteria were availability of AD CSF biomarkers and blood to derive DNAm measures among the study participants in 2019.

The EHBS is a prospective research study focusing on preclinical biomarkers and the cognitive health of older adults. The EHBS is nested within the Emory Healthy Aging Study (EHAS) and includes participants from the metro-Atlanta region in Georgia, USA. The EHBS was launched in 2016 and the primary aim is to characterize biological, psychological and psychosocial factors associated with normal and abnormal aging through assessment of the central nervous system among adults 45-75 years old who were free of cognitive impairment in addition to several other chronic conditions (e.g. congestive heart failure, multiple sclerosis, HIV) at enrollment; more details on recruitment and eligibility have been published elsewhere(23). All participants completed an online consent process prior to enrollment and provided informed consent. The study was approved by the Emory University Institutional Review Board (IRB).

ADNI is a longitudinal, observational study with participant ages ranging from 55 to 90 designed to collect and validate biomarkers for AD. ADNI was launched in 2003 as a public-private partnership with a primary goal to test whether serial magnetic resonance imaging (MRI), positron emission tomography (PET), other biological markers, and clinical and neuropsychological assessment can be combined to improve measure the progression of mild cognitive impairment (MCI) and AD for clinical trials. Participant recruitment for ADNI is approved by the Institutional Review Board of each participating site. All ADNI participants undergo standardized diagnostic assessment that renders a clinical diagnosis of either control, MCI, or AD using standard research criteria (24).

CSF AD biomarker measurements

In the EHBS, CSF biospecimens were collected via lumbar puncture at enrollment as previously described (25). A β 42, tTau, and pTau CSF levels were quantified using the ElectroChemiLuminescence Immunoassay (ECLIA) Elecsys® AD CSF portfolio on an automated Roche Diagnostics instrument (F. Hoffman-La Roche Ltd). In ADNI, A β 42, tTau, and pTau CSF levels were quantified using the Elecsys immunoassay detection platform (Roche Diagnostics Corporation, Indianapolis, IN USA) (26).

DNA methylation data quality control

In EHBS and ADNI, DNAm was measured using the Illumina Infinium HumanMethylationEPIC BeadChip version 1, which quantified more than 850,000 CpGs sites in March 2020. DNAm preprocessing and sample quality control followed prior work (27,28) as described previously (29) and was done separately for EHBS and ADNI. Sample quality control measures included assessment of : a) 17 technical parameters with R package ewastools (30), including array staining, extension, hybridization, target removal, specificity, bisulfite conversion; b) estimate the methylated and

unmethylated intensities with the `getQC` function from `minfi` (31) using default parameters; c) agreement between predicted (inferred from DNAm intensities of the sex chromosome using the `minfi` R package) and recorded sex; d) poor probe detection determined by if a samples had >1% probes with detection p-value > 0.01; e) low beadcount if 1% probes had beadcount < 3; f) outliers detection by function `outlyx` from R package `wateRmelon`(32) using default parameter.

After sample quality checks, probe level quality control was performed by removing XY probes and removing probes with bad detection p-value (p-value > 0.01) or with bead count < 3. Probes identified as poorly performing in more than 1% samples were removed from all samples. Probes that were cross hybridizing/cross reactive and occurred over polymorphic sites, defined by Pidsley annotation(33), were removed. After quality control, 661,869 probes and 450 unique samples remained for the analysis in the EHBS and 699,218 probes and 122 unique samples in ADNI.

Subsequently, probe-level normalization was done in two steps. Firstly, we normalized for color bias, background noise and dye-bias as implemented with `preprocessNoob` function from the `minfi` R package 1.42.0(34). Secondly, we applied the β -mixture quantile normalization (BMIQ) procedure in the `wateRmelon` R package 2.2.0(32) to normalize beta values distributions of type 1 and type 2 design probes in the Illumina arrays.

To account for batch effects, including chip ID, chip position, and plate effects, we used the function `ComBat()` from the `sva` R package 3.48.0(32) using default parameters.

Epigenome-wide association study

Since the White EHBS participants (N=450) were by far the largest sample and CSF AD biomarkers differ by race (35), the White EHBS samples were used in our main analysis, followed by a replication of the top 10 CpGs in ADNI (N=122) and in the Black EHBS participants (N=45). We conducted independent epigenome-wide association studies (EWAS) of CSF AD biomarkers in EHBS (stratified by race) and ADNI (all White). We further conducted a replication analysis of the top 10 CpGs from ADNI in the White EHBS participants. An epigenome-wide meta-analysis of the White participants from EHBS and ADNI was conducted as a secondary analysis.

The main outcomes considered were t Tau, p Tau and $A\beta_{42}/\text{Tau}$ ratio, which were Box-Cox transformed using the `car` R package to improve normality. We also used ADNI-established thresholds (36) of CSF $A\beta_{42}$ and p Tau to dichotomize individuals for each measure (i.e., $A\beta_{42}+/-$ and $p\text{Tau}+/-$). The threshold for $A\beta_{42}$ was 980 pg/ml, and threshold for p Tau was 21.8 pg/ml. We used ADNI-established thresholds of CSF $A\beta_{42} < 980$ pg/ml and $p\text{Tau}_{181} > 21.8$ pg/ml to categorize individuals as either positive or negative for the respective measure ($A+T+$, $A-T+$, $A+T-$, and $A-T-$). The thresholds were selected to maximize the concordance with positive amyloid- β as determined by positive florbetapir ($^{18}\text{F-AV-45}$) positron emission tomography (PET) imaging (26).

The association between DNAm beta values, which represent the ratio of the methylated probe intensity to the overall intensity (sum of methylated and unmethylated probe intensities) at a given CpG site, and CSF biomarkers (i.e., t Tau, p Tau, $A\beta_{42}/\text{Tau}$ ratio, $A\beta_{42}+/-$, $p\text{Tau}+/-$) was assessed using robust linear regression models with CSF biomarkers as independent variable and DNAm beta values as the dependent variable, with models fit using `rlm` from the `MASS` R package. All models were adjusted for age at baseline, sex, smoking status (i.e., with or without smoking history), and estimated cell-type proportions (i.e., B lymphocytes, natural killer cells, $\text{CD4}^+\text{T}$ lymphocytes, $\text{CD8}^+\text{T}$ lymphocytes, monocytes, and neutrophils). Cell type proportions were estimated using the `FlowSorted.Blood.EPIC` (version 1.8.0) R package 2.0.0 (37). To meta-analyze individual CpG results from EHBS and ADNI, we used the inverse-variance weighted fixed-effects model, as

implemented in METAL(38). We used the Bonferroni threshold to account for multiple testing, resulting in a threshold of $p = 7.55 \times 10^{-8}$ or (0.05/66,1869) for the EWAS in EHBS and $p = 7.60 \times 10^{-8}$ (0.05/657,799) in the meta-analysis.

We also explored if we could find differentially methylated regions (DMRs) in relation to CSF AD biomarkers using the DMRff method(39). We chose this method as it provides decent power for detecting DMRs and without an inflated Type I error rate(40).

We conducted several secondary analyses for the top ten CpG sites from the EWAS in EHBS and ADNI as well as from the meta-analysis. First, we assessed the correlation between the DNAm beta values of the top CpGs across blood and brain tissue using the Blood–Brain Epigenetic Concordance (BECon) tool (46), and the data from Braun et al. (2019) on the Gene Expression Omnibus Database [Accession code GSE111165] (41). To further aid the interpretation of our top associations, we conducted a gene ontology (GO) and KEGG pathway enrichment analysis using the R package missMethyl based on the top 1000 CpG sites with lowest raw p-values for each EWAS and the meta-analyses results (42).

Results

Demographics

There were 495 participants from the EHBS and 122 White participants from ADNI (**Table 1**) who met our inclusion criteria of being cognitively normal with available blood DNAm and CSF AD biomarkers. On average, the EHBS participants were about 10 years younger than the ADNI participants (mean age (sd) EHBS White: 62.9 (6.89) years; EHBS Black: 61.7 (8.06) years; ADNI: 74.2 (5.97)) and included more females, particularly among the Black participants (EHBS White: 70.2%; EHBS Black: 82.2%; ADNI: 50.8%). Fewer EHBS participants had a history of tobacco smoking (EHBS White: 30.7%; EHBS Black: 31.1%) compared to ADNI participants (42.6%). EHBS participants had a higher prevalence of the *APOE E4* allele than ADNI participants (**Table 1**).

In line with their older age, ADNI participants showed more signs of AD-related changes in CSF AD biomarkers in comparison to the EHBS participants. Average levels of tTau and pTau were lower among EHBS participants (EHBS White: mean (sd) tTau: 190 (68.0), pTau: 16.9 (6.72); EHBS Black: mean (sd) tTau: 155 (47.5), pTau: 14.4 (4.67)) than among ADNI participants (ADNI: mean (sd) tTau: 250 (88.1); pTau: 22.9 (9.27)). The distribution of A β 42 \pm was similar across the White EHBS participants and ADNI participants (EHBS White: 28.0% A β 42 $+$, ADNI: 31.1% A β 42 $+$) but the proportion of Black EHBS participants who were A β 42 $+$ was higher than both EHBS White participants and ADNI participants (48.9%).

Epigenome-wide association study

We investigated whether blood DNAm was associated with CSF A β 42, pTau, and tTau biomarkers in 617 cognitively normal participants enrolled in EHBS and ADNI. In the EWAS of the White EHBS participants (N=450), no CpG sites were significant at the Bonferroni adjusted p-value < 0.05 threshold (equivalent to $p < 7.56 \times 10^{-8}$) for any of the AD CSF biomarkers after adjusting for age, sex, smoking history, and estimated cell-type proportions (B lymphocytes, natural killer cells, CD4 $+$ T lymphocytes, CD8 $+$ T lymphocytes, monocytes, neutrophils) (**Figure 1, Table 2, Figure S1**). At a less stringent EWAS p-value threshold, we found several CpG sites with p-value < 1E-05 for these CSF AD biomarkers and several were found in more than one AD biomarkers with most of the overlap observed between tTau and pTau (**Figure 1F**). For example, cg03586820, which was closest

to the gene *SZRD1*, was among the ten most significant CpG sites for tTau (effect estimate: -0.112, p-value: 3.31e-07), pTau (effect estimate: -0.073, p-value: 2.64e-06) and A β 42/tTau (effect estimate: 0.003, p-value: 3.32e-07). The CpG site cg13422045, assigned to *ARHGEF17*, also showed similar associations across three CSF AD biomarkers (tTau, pTau and pTau+/-), with the strongest associations observed for pTau (effect estimate: -0.010, p-value: 2.76e-06) and pTau+/- (effect estimate: -0.003, p-value: 8.23e-06; Figure 1F). None of the top ten CpG sites with the smallest p-values for the association with the five CSF AD biomarkers could be replicated in ADNI at a nominal p-value threshold of 5%. Similarly, none of the top CpG sites could be replicated in the 45 Black/African American EHBS participants (replication results: **Table S1**)

In ADNI (N=122), two CpG sites were significant at the 5% Bonferroni threshold after adjusting for age, sex, smoking history, and estimated cell-type proportions (B lymphocytes, natural killer cells, CD4 \square + \square T lymphocytes, CD8 \square + \square T lymphocytes, monocytes, neutrophils), including cg21021972 (assigned to the gene *ADAMTS9*) which was significant in A β 42/tTau (effect estimate: 0.003, p-value: 6.29e-08), and cg17394124 (assigned to the gene *CFH*), which was significant in A β 42+/- (effect estimate: -0.080, p-value: 7.15e-08) (**Figure 2, Table S2, Figure S2**). However, only one of the top ten CpG sites with the smallest p-values for the association with the five CSF AD biomarkers (and none of the two significant CpG sites) could be replicated in the EHBS at a nominal p-value threshold of 5%. The CpG site cg17394795, which was assigned to the gene *RP11-53B5.1* was among the top ten CpG sites for A β 42+/- in ADNI (effect estimate: -0.019, p-value: 2.05e-06) and was also nominally significant in the EHBS, although the association was weaker (effect estimate: -0.007, p-value: 0.002).

We did not find any differentially methylated regions for any of the CSF AD biomarkers in EHBS or ADNI.

Meta-analysis

In the EWAS meta-analysis of the White EHBS and ADNI participants (N=572), no CpG sites were significant at the Bonferroni adjusted p-value < 0.05 threshold (equivalent to $p < 7.60 \times 10^{-8}$) for any of the AD CSF biomarkers after adjusting for age, sex, smoking history, and estimated cell-type proportions (B lymphocytes, natural killer cells, CD4 \square + \square T lymphocytes, CD8 \square + \square T lymphocytes, monocytes, neutrophils) (**Table 3, Figure S3, Figure S4**).

Since the sample size of the White EHBS participants (N=450) was substantially larger than ADNI White participants (N=122), most of the top associations in the meta-analysis were driven by the EHBS (**Table 3**). For the continuous AD CSF biomarkers, only one of the top 10 CpG sites from the epigenome-wide meta-analysis was at least nominally significant (unadjusted p-value < 0.05) in both cohorts, namely cg05104523 (*RGS12*), which was among the top ten CpG sites for tTau and pTau. For the categorical outcomes of A β 42+/- and pTau+/-, several of the top 10 CpG sites from the epigenome-wide meta-analysis were at least nominally significant (unadjusted p-value < 0.05) in both cohorts. For A β 42+/-, six of the top 10 CpG sites were at least nominally significant in both cohorts, including cg08216368 (*PSMD13*), cg17394795 (*RP11-53B5.1*), cg13589108 (*BRINP2*), cg05961166 (*snoU13*), cg16182707 (*ALDH1L2*) and cg07767421 (*SEC14L5*). For pTau+/-, four of the top 10 CpG sites were at least nominally significant in both cohorts, including cg22207257 (*LINC01031*), cg12031108 (*PTHLH*), cg18958053 (*RP11-548M13.1*) and cg02671700 (*RN7SKP135*).

Secondary analyses

To further aid the interpretation of our top associations, we performed a gene ontology (GO) and KEGG pathway enrichment analysis based on the top 1000 CpG sites from the EWAS and the meta-

analyses with lowest raw p-values. After correction for multiple testing (FDR <0.05), we only identified one KEGG pathway (Parathyroid hormone synthesis, secretion and action) associated with A β 42/tTau in the EWAS of ADNI. While not statistically significant after correction for multiple testing, the same KEGG pathway was also among the top KEGG pathways for A β 42/tTau in the EWAS of EHBS (unadjusted p-value = 0.030; 5th smallest p-value) and in the meta-analysis (unadjusted p-value = 0.005; 2nd smallest p-value). We did not identify any GO terms or other KEGG pathways with an overrepresentation of genes containing significantly, differentially methylated CpGs that would indicate an enriched biological pathway. GO terms and KEGG pathways that were nominally significant (raw p<0.05) are included in the supplement (**Tables S3-S11**).

To evaluate the blood–brain concordance for DNAm beta values at our top ten CpG sites, we used the BECon tool and Gene Expression Omnibus Database [Accession code GSE111165]. Several of the top ten CpG sites from the EWAS and the meta-analyses exhibited blood–brain concordance (Tables S3-S5). Among the top 10 CpG sites from the meta-analysis that were at least nominally significant in both cohorts, cg05104523 (*RGS12*, among the top ten CpG sites for tTau and pTau, brain-blood correlation=0.5, p-value=0.022) exhibited blood–brain concordance based on the Gene Expression Omnibus Database.

Discussion

In the present study, we conducted a blood EWAS of AD CSF biomarkers among 617 cognitively normal participants enrolled in the EHBS and ADNI cohorts. While this is one of the largest EWAS of AD CSF biomarkers and the first that was conducted among cognitively normal individuals, we found little evidence of an association between blood DNAm and AD CSF biomarkers in pre-clinical stages of AD. In the EHBS (N=450 White participants), no CpG sites remained significant at the 5% Bonferroni threshold after adjusting for age, sex, smoking history, and estimated cell-type proportions. In ADNI (N=122 White participants), two CpG sites remained significant at the 5% Bonferroni threshold, but they could not be replicated in the EHBS. Overall, there was little agreement between the top CpG sites from the EWAS of EHBS and of ADNI, respectively, as reflected by little overlap between top CpG sites and no significant findings in the meta-analyses of the two studies. While not statistically significant, a few CpG sites that were either among the top CpG sites for EHBS and ADNI or showed a good agreement across several AD CSF biomarkers are noteworthy and should be further investigated in future studies.

Only two CpG sites were significantly associated with AD CSF biomarkers among 122 cognitively normal participants from the ADNI cohort. Differential DNAm in cg21021972 (assigned to the gene *ADAMTS9*) was significantly associated with A β 42/tTau, and cg17394124 (assigned to the gene *CFH*) was significantly associated with A β 42+/. However, both CpG sites could not be replicated in the EWAS in EHBS, and the meta-analysis of ADNI and EHBS did not identify any significant CpG sites. Our findings could have two potential explanations. First, the absence of a robust association between blood-based DNAm and AD CSF biomarkers in our study might indicate that epigenetic changes in the blood is not a good indicator of pre-clinical stages of AD. This hypothesis is further supported by the weak evidence for an association between blood-based DNAm and cognitive function among cognitively normal individuals. Specifically, a large-scale epigenome-wide meta-analysis of seven measures of cognitive functioning using data from 11 cohorts (N=6809 healthy, older-aged adults) only identified two significant CpG associations with executive function and global cognitive ability (43). Second, even when evaluating epigenetic signatures of AD CSF biomarkers among AD/MCI patients and controls, the most recent EWAS, which included 885 participants from the EMIF-AD study, also did not find strong evidence of an association for CSF amyloid measures and CSF tau variables, as no CpG sites passed the Bonferroni-significance threshold for those measures (22). This study only identified associations between differential DNAm and CSF biomarkers of neuroinflammation (YKL-40) and neurodegeneration (NfL). Another study of 202 ADNI

participants identified several FDR-significant loci associated with p-tau181 and A β 42 (21), but none of those CpG sites could be replicated in the larger EMIF-AD study (22).

While none of the CpG sites in the EHBS EWAS passed the Bonferroni-significance threshold, several CpG sites had p-values < 1e-5 for more than one CSF AD biomarker, with most of the overlap observed between tTau and pTau. For example, cg03586820 (*SZRD1*) was among the ten most significant CpG sites for tTau, pTau and A β 42/tTau, and cg13422045 (*ARHGEF17*) also showed similar associations across the tau-related CSF AD biomarkers (tTau, pTau and pTau+/-). Interestingly, *ARHGEF17* has been associated with AD Braak stage (44)(45), schizophrenia (46) and mortality (47) in previous studies.

A few CpG sites from our meta-analysis of EHBS and ADNI are noteworthy, as they were among the top 10 CpG sites from the epigenome-wide meta-analysis and at least nominally significant (raw p-value < 0.05) in both cohorts. These include cg05104523 (*RGS12*), which was among the top ten CpG sites for tTau and pTau, cg08216368 (*PSMD13*), cg17394795 (*RP11-53B5.1*), cg13589108 (*BRINP2*), cg05961166 (*snoU13*), cg16182707 (*ALDH1L2*) and cg07767421 (*SEC14L5*), which were among the top CpG sites for A β 42+/-, and cg22207257 (*LINC01031*), cg12031108 (*PTHLH*), cg18958053 (*RP11-548M13.1*) and cg02671700 (*RN7SKP135*), which were among the top CpG sites for pTau+/- . To our knowledge, *RGS12* is the only gene that has been associated with ADRD previously, in particular with frontotemporal dementia (48). Interestingly, cg05104523 (*RGS12*) also exhibited blood-brain concordance based on the Gene Expression Omnibus Database, suggesting that differential DNAm of cg05104523 in the blood could mirror related changes in the brain.

Our KEGG pathway enrichment analysis identified one KEGG pathway (Parathyroid hormone synthesis, secretion and action) associated with A β 42/tTau in the EWAS of ADNI, which was also among the top KEGG pathways for A β 42/tTau in the EWAS of EHBS and in the meta-analysis. Abnormal parathyroid hormone levels play a role in neuronal calcium dysregulation, hypoperfusion and disrupted neuronal signaling and there is some support for a link between parathyroid hormone levels, cognition and dementia (49). A previous systematic review pointed out that mixed findings from previous studies are supported by low and moderate quality data susceptible to confounding effects and limited external validity (49). Given the plausible mechanisms to suggest abnormal parathyroid hormone levels may lead to cognitive dysfunction and an increased risk of dementia, our study is an important contribution for disentangling this relationship.

Our study has several strengths. Most importantly, the EHBS is one of the largest prospective cohort studies with CSF samples from cognitively normal individuals. The level of depth in our outcome assessment, underscored by the inclusion of a substantial sample size with CSF measurements, a highly invasive and challenging-to-obtain biological fluid, provides a rare and valuable opportunity to understand potential associations between differential DNAm and AD CSF biomarkers among cognitively normal individuals. Furthermore, our study is the first study of DNAm and AD CSF biomarkers that attempted a replication of findings in an independent cohort, namely ADNI, thus strengthening the robustness of our conclusions.

In addition to its strengths, our study has several limitations. First, the temporal sequence between differential DNAm and AD CSF biomarkers could not be clearly defined because both were assessed in blood samples collected at the same study visit. Furthermore, while all our study participants were cognitively normal, i.e., without a diagnosis of cognitive impairment at blood draw, there were substantial differences between EHBS and ADNI participants related to the study design and the demographics. EHBS participants were about 10 years younger than the ADNI participants and overall healthier. In addition, there were only 122 cognitively normal ADNI participants with DNAm data (vs. 450 EHBS participants), which might have contributed to the lack of replication across the

two cohorts. Another limitation of our study is the use of whole blood for DNAm profiling. Although we have tried to account for this by including cell proportions as covariates in our analyses, future research using DNA isolated from specific cell types would enable the identification of cell type-specific signatures related to the AD CSF biomarkers. Another limitation of our study is that we had to restrict our main analyses to White participants and none of our findings could be replicated in our smaller population of Black/African American EHBS participants of the EHBS.

In conclusion, our EWAS of blood-based DNAm and AD CSF biomarkers among 617 cognitively normal participants enrolled in the EHBS and the ADNI cohort showed only weak evidence of an association between differential DNAm and AD CSF biomarkers assessed to evaluate pre-clinical stages of AD. Future studies should include additional biomarkers, e.g., CSF biomarkers of neuroinflammation (YKL-40) and neurodegeneration (NfL) or blood-based AD biomarkers, which might show a stronger correlation between blood-based DNAm.

References

1. Jiaquan Xu, Sherry L. Murphy, Kenneth D. Kochanek, Elizabeth Arias. Mortality in the United States, 2018. NCHS Data Brief [Internet]. 2020 Jan;no 355. Available from: <https://www.cdc.gov/nchs/products/databriefs/db355.htm>
2. 2021 Alzheimer's disease facts and figures. *Alzheimers Dement*. 2021 Mar;17(3):327–406.
3. Jack CR, Bennett DA, Blennow K, Carrillo MC, Dunn B, Haeberlein SB, et al. NIA-AA Research Framework: Toward a biological definition of Alzheimer's disease. *Alzheimer's & Dementia*. 2018 Apr;14(4):535–62.
4. Johnson ECB, Bian S, Haque RU, Carter EK, Watson CM, Gordon BA, et al. Cerebrospinal fluid proteomics define the natural history of autosomal dominant Alzheimer's disease. *Nat Med*. 2023 Aug;29(8):1979–88.
5. Blennow K. CSF biomarkers for mild cognitive impairment. *J Intern Med*. 2004 Sep;256(3):224–34.
6. Mitchell AJ. CSF phosphorylated tau in the diagnosis and prognosis of mild cognitive impairment and Alzheimer's disease: a meta-analysis of 51 studies. *J Neurol Neurosurg Psychiatry*. 2009 Sep;80(9):966–75.
7. Snider BJ, Fagan AM, Roe C, Shah AR, Grant EA, Xiong C, et al. Cerebrospinal fluid biomarkers and rate of cognitive decline in very mild dementia of the Alzheimer type. *Arch Neurol*. 2009 May;66(5):638–45.
8. Ljubenkova PA, Staffaroni AM, Rojas JC, Allen IE, Wang P, Heuer H, et al. Cerebrospinal fluid biomarkers predict frontotemporal dementia trajectory. *Ann Clin Transl Neurol*. 2018 Oct;5(10):1250–63.
9. Perani D, Cerami C, Caminiti SP, Santangelo R, Coppi E, Ferrari L, et al. Cross-validation of biomarkers for the early differential diagnosis and prognosis of dementia in a clinical setting. *Eur J Nucl Med Mol Imaging*. 2016 Mar;43(3):499–508.
10. Weymouth L, Smith AR, Lunnon K. DNA Methylation in Alzheimer's Disease. In Berlin, Heidelberg: Springer Berlin Heidelberg; 2024 [cited 2024 Nov 21]. (Current Topics in Behavioral Neurosciences). Available from: https://link.springer.com/10.1007/7854_2024_530
11. Smith RG, Pishva E, Shireby G, Smith AR, Roubroeks JAY, Hannon E, et al. A meta-analysis of epigenome-wide association studies in Alzheimer's disease highlights novel differentially methylated loci across cortex. *Nat Commun*. 2021 Jun 10;12(1):3517.
12. Iwata A, Nagata K, Hatsuta H, Takuma H, Bundo M, Iwamoto K, et al. Altered CpG methylation in sporadic Alzheimer's disease is associated with APP and MAPT dysregulation. *Hum Mol Genet*. 2014 Feb 1;23(3):648–56.
13. Wang SC, Oelze B, Schumacher A. Age-specific epigenetic drift in late-onset Alzheimer's disease. *PLoS One*. 2008 Jul 16;3(7):e2698.
14. Smith RG, Hannon E, De Jager PL, Chibnik L, Lott SJ, Condliffe D, et al. Elevated DNA methylation across a 48-kb region spanning the HOXA gene cluster is associated with Alzheimer's disease neuropathology. *Alzheimers Dement*. 2018 Dec;14(12):1580–8.
15. Nicolia V, Cavallaro RA, López-González I, Maccarrone M, Scarpa S, Ferrer I, et al. DNA Methylation Profiles of Selected Pro-Inflammatory Cytokines in Alzheimer Disease. *J Neuropathol Exp Neurol*. 2017 Jan 1;76(1):27–31.
16. Hüls A, Robins C, Conneely KN, Edgar R, De Jager PL, Bennett DA, et al. Brain DNA Methylation Patterns in CLDN5 Associated With Cognitive Decline. *Biol Psychiatry*. 2022 Feb 15;91(4):389–98.
17. Acha B, Corroza J, Sánchez-Ruiz De Gordo J, Cabello C, Robles M, Méndez-López I, et al. Association of Blood-Based DNA Methylation Markers With Late-Onset Alzheimer Disease: A Potential Diagnostic Approach. *Neurology [Internet]*. 2023 Dec 5 [cited 2024 Jul 15];101(23). Available from: <https://www.neurology.org/doi/10.1212/WNL.0000000000207865>

18. Roubroeks JAY, Smith AR, Smith RG, Pishva E, Ibrahim Z, Sattlecker M, et al. An epigenome-wide association study of Alzheimer's disease blood highlights robust DNA hypermethylation in the HOXB6 gene. *Neurobiol Aging*. 2020 Nov;95:26–45.
19. Lardenoije R, Roubroeks JAY, Pishva E, Leber M, Wagner H, Iatrou A, et al. Alzheimer's disease-associated (hydroxy)methylomic changes in the brain and blood. *Clin Epigenetics*. 2019 Nov 27;11(1):164.
20. Konki M, Malonzo M, Karlsson IK, Lindgren N, Ghimire B, Smolander J, et al. Peripheral blood DNA methylation differences in twin pairs discordant for Alzheimer's disease. *Clin Epigenetics*. 2019 Sep 2;11(1):130.
21. Zhang W, Young JI, Gomez L, Schmidt MA, Lukacsovich D, Varma A, et al. Distinct CSF biomarker-associated DNA methylation in Alzheimer's disease and cognitively normal subjects. *Alz Res Therapy*. 2023 Apr 10;15(1):78.
22. Smith RG, Pishva E, Kouhsar M, Imm J, Dobricic V, Johannsen P, et al. Blood DNA methylomic signatures associated with CSF biomarkers of Alzheimer's disease in the EMIF-AD study. *Alzheimer's & Dementia*. 2024 Aug 28;alz.14098.
23. Goetz ME, Hanfelt JJ, John SE, Bergquist SH, Loring DW, Quyyumi A, et al. Rationale and Design of the Emory Healthy Aging and Emory Healthy Brain Studies. *Neuroepidemiology*. 2019;53(3–4):187–200.
24. ADNI Procedures Manual [Internet]. Available from: <https://adni.loni.usc.edu/wp-content/uploads/2008/07/adni2-procedures-manual.pdf>
25. Teunissen CE, Petzold A, Bennett JL, Berven FS, Brundin L, Comabella M, et al. A consensus protocol for the standardization of cerebrospinal fluid collection and biobanking. *Neurology*. 2009 Dec 1;73(22):1914–22.
26. L. M. Shaw, J. Q. Trojanowski. for the Alzheimer's Disease Neuroimaging Initiative, Methods Report, ADNI3: Batch analyses of Ab42, t-tau, and p-tau181 in ADNI1, GO, 2 CSF samples using the fully automated Roche Elecsys and cobas e immunoassay analyzer system [Internet]. Available from: <https://adni.loni.usc.edu/wp-content/uploads/2018/04/PPT-set-102-PPSB-FTF-Boston-10-31-2017.pptx>
27. Konwar C, Asiimwe R, Inkster AM, Merrill SM, Negri GL, Aristizabal MJ, et al. Risk-focused differences in molecular processes implicated in SARS-CoV-2 infection: corollaries in DNA methylation and gene expression. *Epigenetics & Chromatin*. 2021 Dec 11;14(1):54.
28. Merrill SM, Gladish N, Fu MP, Moore SR, Konwar C, Giesbrecht GF, et al. Associations of peripheral blood DNA methylation and estimated monocyte proportion differences during infancy with toddler attachment style. *Attach Hum Dev*. 2023 Feb;25(1):132–61.
29. Kober Lab [Internet]. Available from: <https://github.com/kobor-lab>
30. Heiss JA, Just AC. Identifying mislabeled and contaminated DNA methylation microarray data: an extended quality control toolset with examples from GEO. *Clin Epigenet*. 2018 Dec;10(1):73.
31. Aryee MJ, Jaffe AE, Corrada-Bravo H, Ladd-Acosta C, Feinberg AP, Hansen KD, et al. Minfi: a flexible and comprehensive Bioconductor package for the analysis of Infinium DNA methylation microarrays. *Bioinformatics*. 2014 May 15;30(10):1363–9.
32. Pidsley R, Y Wong CC, Volta M, Lunnon K, Mill J, Schalkwyk LC. A data-driven approach to preprocessing Illumina 450K methylation array data. *BMC Genomics*. 2013 May 1;14:293.
33. Pidsley R, Zotenko E, Peters TJ, Lawrence MG, Risbridger GP, Molloy P, et al. Critical evaluation of the Illumina MethylationEPIC BeadChip microarray for whole-genome DNA methylation profiling. *Genome Biol*. 2016 Oct 7;17(1):208.
34. Triche TJ, Weisenberger DJ, Van Den Berg D, Laird PW, Siegmund KD. Low-level processing of Illumina Infinium DNA Methylation BeadArrays. *Nucleic Acids Res*. 2013 Apr;41(7):e90.
35. Hajjar I, Yang Z, Okafor M, Liu C, Waligorska T, Goldstein FC, et al. Association of Plasma and Cerebrospinal Fluid Alzheimer Disease Biomarkers With Race and the Role of Genetic Ancestry, Vascular Comorbidities, and Neighborhood Factors. *JAMA Netw Open*. 2022 Oct 3;5(10):e2235068.

36. Lah JJ, Tian G, Risk BB, Hanfelt JJ, Wang L, Zhao L, et al. Lower Prevalence of Asymptomatic Alzheimer's Disease Among Healthy African Americans. *Annals of Neurology*. 2024 Sep;96(3):463–75.
37. Lucas A. DC. FlowSorted.Blood.EPIC [Internet]. Bioconductor; 2018 [cited 2024 Jun 20]. Available from: <https://bioconductor.org/packages/FlowSorted.Blood.EPIC>
38. Willer CJ, Li Y, Abecasis GR. METAL: fast and efficient meta-analysis of genomewide association scans. *Bioinformatics*. 2010 Sep 1;26(17):2190–1.
39. Suderman M, Staley JR, French R, Arathimos R, Simpkin A, Tilling K. dmrff: identifying differentially methylated regions efficiently with power and control [Internet]. 2018 [cited 2024 Jun 21]. Available from: <http://biorxiv.org/lookup/doi/10.1101/508556>
40. Lent S, Cardenas A, Rifas-Shiman SL, Perron P, Bouchard L, Liu CT, et al. Detecting Differentially Methylated Regions with Multiple Distinct Associations. *Epigenomics*. 2021 Mar;13(6):451–64.
41. Braun PR, Han S, Hing B, Nagahama Y, Gaul LN, Heinzman JT, et al. Genome-wide DNA methylation comparison between live human brain and peripheral tissues within individuals. *Transl Psychiatry*. 2019 Jan 31;9(1):47.
42. Phipson B, Maksimovic J, Oshlack A. missMethyl: an R package for analyzing data from Illumina's HumanMethylation450 platform. *Bioinformatics*. 2016 Jan 15;32(2):286–8.
43. Marioni RE, McRae AF, Bressler J, Colicino E, Hannon E, Li S, et al. Meta-analysis of epigenome-wide association studies of cognitive abilities. *Mol Psychiatry*. 2018 Nov;23(11):2133–44.
44. Zhang L, Silva TC, Young JI, Gomez L, Schmidt MA, Hamilton-Nelson KL, et al. Epigenome-wide meta-analysis of DNA methylation differences in prefrontal cortex implicates the immune processes in Alzheimer's disease. *Nat Commun*. 2020 Nov 30;11(1):6114.
45. Zhang L, Young JI, Gomez L, Silva TC, Schmidt MA, Cai J, et al. Sex-specific DNA methylation differences in Alzheimer's disease pathology. *Acta Neuropathol Commun*. 2021 Apr 26;9(1):77.
46. Li M, Li Y, Qin H, Tubbs JD, Li M, Qiao C, et al. Genome-wide DNA methylation analysis of peripheral blood cells derived from patients with first-episode schizophrenia in the Chinese Han population. *Mol Psychiatry*. 2021 Aug;26(8):4475–85.
47. Lund JB, Li S, Baumbach J, Svane AM, Hjelmberg J, Christiansen L, et al. DNA methylome profiling of all-cause mortality in comparison with age-associated methylation patterns. *Clin Epigenetics*. 2019 Feb 8;11(1):23.
48. Li Y, Chen JA, Sears RL, Gao F, Klein ED, Karydas A, et al. An epigenetic signature in peripheral blood associated with the haplotype on 17q21.31, a risk factor for neurodegenerative tauopathy. *PLoS Genet*. 2014 Mar;10(3):e1004211.
49. Lourida I, Thompson-Coon J, Dickens CM, Soni M, Kuźma E, Kos K, et al. Parathyroid hormone, cognitive function and dementia: a systematic review. *PLoS One*. 2015;10(5):e0127574.

Acknowledgments

We gratefully acknowledge the research volunteers and staff of the Goizueta Alzheimer's Disease Research Center at Emory University, and Emory Healthy Brain Study for their participation and contributions. This work was supported by I01 BX003853 (APW), I01 BX005686 (APW), IK4 BX005219 (APW), P30 AG066511 (AIL, JLL), R01 AG056533 (APW, TSW), R01 AG070937 (JLL), R01 AG072120 (APW, TSW), R01 AG075827 (APW, TSW), R01 AG079170 (AH, TSW), U01 AG046161 (AIL), U01 AG061356 (AIL), U01 AG061357 (AIL), U01 AG088425 (AH, TSW), R01AG087250 (AH)

Conflict of Interest

The authors declare no competing interests. Author disclosures are available in the Supporting Information.

Consent Statement

The Emory Healthy Brain Study was approved by the Institutional Review Board of Emory University Medical Center. All participants provided written informed consent.

Keywords

Alzheimer's disease (AD), amyloid, biomarker, blood, cerebrospinal fluid (CSF), DNA methylation, epigenetics, epigenome-wide association study (EWAS)

Tables and Figures

Table 1. Characteristics of the participants from EHBS and ADNI.

	EHBS (N=495)		ADNI (N=122)
Race	White (N=450)	Black (N=45)	White (N=122)
A. Characteristics			
Sex			
Female	316 (70.2%)	37 (82.2%)	62 (50.8%)
Male	134 (29.8%)	8 (17.8%)	60 (49.2%)
Age			
Mean (SD)	62.9 (6.89)	61.7 (8.06)	74.2 (5.97)
Median [Min, Max]	63.6 [45.2, 77.0]	59.5 [50.1, 77.7]	73.5 [62.0, 89.6]
Smoking			
No	312 (69.3%)	31 (68.9%)	70 (57.4%)
Yes	138 (30.7%)	14 (31.1%)	52 (42.6%)
APOE4			
0	312 (69.3%)	24 (53.3%)	94 (77.0%)
1	122 (27.1%)	18 (40.0%)	25 (20.5%)
2	15 (3.3%)	2 (4.4%)	3 (2.5%)
Missing	1 (0.2%)	1 (2.2%)	0 (0%)
B. CSF AD biomarkers			
tTau			
Mean (SD)	190 (68.0)	155 (47.5)	250 (88.1)
Median [Min, Max]	176 [80.0, 555]	161 [80.2, 282]	227 [123, 574]
pTau			
Mean (SD)	16.9 (6.72)	14.4 (4.67)	22.9 (9.27)
Median [Min, Max]	15.4 [8.00, 61.5]	14.9 [8.00, 24.5]	20.0 [10.4, 60.0]
Aβ42/tTau			
Mean (SD)	6.80 (2.04)	6.71 (1.86)	5.53 (2.34)
Median [Min, Max]	7.07 [0.692, 11.3]	6.72 [2.17, 10.5]	5.71 [0.989, 10.5]
Aβ42+/-			
A-	324 (72.0%)	23 (51.1%)	84 (68.9%)
A+	126 (28.0%)	22 (48.9%)	38 (31.1%)
pTau+/-			
T-	365 (81.1%)	41 (91.1%)	69 (56.6%)
T+	85 (18.9%)	4 (8.9%)	53 (43.4%)

Table 2. Top 10 CpGs sites from the EWAS of AD CSF biomarkers in EHBS (N=450 White participants) and their replication in ADNI (N=122 White participants).

A. tTau						
CpG	Position	Gene	EHBS		ADNI	
			Effect estimate	p-value	Effect estimate	p-value
cg25530374	chr16:2047171	AC005606.15,ZNF598	-0.015	2.87e-07	-0.035	0.160
cg03586820	chr1:16679780	SZRD1	-0.112	3.31e-07	-0.002	0.993
cg03376719	chr3:105086940	ALCAM	0.012	3.49E-07	-0.021	0.253
cg19196826	chr7:3018391	CARD11	0.008	8.14e-07	0.003	0.846
cg19769827	chr1:203259772	RP11-134P9.3	0.007	1.36e-06	-0.013	0.541
cg21719937	chr12:5564478	NTF3	-0.013	1.80e-06	0.012	0.690
cg09766383	chr6:97285174	GPR63	0.021	2.37e-06	-0.018	0.605
cg16602332	chr2:26735409	OTOF	-0.021	2.64e-06	0.008	0.897
cg06334093	chr6:139094587	CCDC28A	0.013	4.00e-06	0.002	0.911
cg22546737	chr10:118934495	RP11-501J20.2	0.003	4.91e-06	0.009	0.171

B. pTau						
CpG	Position	Gene	EHBS		ADNI	
			Effect estimate	p-value	Effect estimate	p-value
cg03376719	chr3:105086940	ALCAM	0.009	2.63e-07	-0.008	0.202
cg19196826	chr7:3018391	CARD11	0.006	5.65e-07	-7.39e-04	0.849
cg25530374	chr16:2047171	AC005606.15,ZNF598	-0.010	5.99e-07	-0.011	0.218
cg06334093	chr6:139094587	CCDC28A	0.009	1.05e-06	-0.002	0.781
cg03586820	chr1:16679780	SZRD1	-0.073	2.64e-06	0.014	0.825
cg13422045	chr11:73021272	ARHGEF17	-0.010	2.76e-06	0.014	0.240
cg09766383	chr6:97285174	GPR63	0.015	3.13e-06	-0.010	0.376
cg21719937	chr12:5564478	NTF3	-0.009	3.29e-06	0.008	0.401
cg08186837	chr1:117910444	MAN1A2	0.003	7.08e-06	-4.77e-04	0.888
cg19769827	chr1:203259772	RP11-134P9.3	0.005	7.24e-06	-0.007	0.287

C. Aβ42/tTau						
CpG	Position	Gene	EHBS		ADNI	
			Effect estimate	p-value	Effect estimate	p-value
cg03586820	chr1:16679780	SZRD1	0.003	3.32e-07	0.002	0.546
cg10917153	chr15:42448786	PLA2G4F	8.85e-04	3.78e-06	7.51e-04	0.644
cg13974715	chr1:236009306	LYST	0.002	5.91e-06	1.61e-04	0.936
cg09340250	chr1:152924562	RP1-13P20.6	-0.003	6.07e-06	-7.17e-05	0.987
cg11069276	chr1:11718175	FBXO44	9.10e-04	1.23e-05	-0.002	0.102
cg10235683	chr8:142304416	SLC45A4	4.79e-04	1.36e-05	-4.55e-04	0.519
cg00056692	chr10:134947537	GPR123	0.001	1.58e-05	-0.002	0.193
cg16158487	chr1:33891592	PHC2	-6.78e-04	2.08e-05	-6.41e-06	0.994
cg27030540	chr19:41754975	AXL	0.001	2.15e-05	-2.63e-04	0.830
cg05832751	chr8:49716954	EFCAB1	5.54e-04	2.16e-05	-4.14e-04	0.630

D. A β 42+ vs. A β 42-

CpG	Position	Gene	EHBS		ADNI	
			Effect estimate	p-value	Effect estimate	p-value
cg08759359	chr5:3288934	CTD-2029E14.1	0.002	9.65e-07	-0.002	0.047
cg27047965	chr1:54433172	LRRC42	0.002	3.33e-06	5.01e-04	0.524
cg15226147	chr19:1275266	C19orf24	-0.014	5.55e-06	0.007	0.436
cg27504433	chr7:6741096	ZNF12	0.002	5.96e-06	0.001	0.315
cg06769708	chr20:35060706	DLGAP4	0.001	7.90e-06	5.97e-04	0.415
cg18890561	chr10:131988419	GLRX3	-0.013	1.16e-05	-0.011	0.093
cg20673767	chr7:158061805	PTPRN2	-0.024	1.19e-05	0.005	0.618
cg20751395	chr11:2594153	KCNQ1	0.005	1.44e-05	-3.26e-04	0.881
cg16879549	chr17:7146439	CTD-2545G14.7	-0.010	1.70e-05	0.007	0.407
cg02400458	chr15:80624605	LINC00927	0.002	1.71e-05	5.61e-04	0.530

E. pTau+ vs. pTau-

CpG	Position	Gene	EHBS		ADNI	
			Effect estimate	p-value	Effect estimate	p-value
cg18254930	chr3:3646624	AC026188.1	0.009	2.85e-07	-3.46e-04	0.921
cg06763914	chr16:74260395	AC009120.4	0.061	1.78e-06	-0.056	0.041
cg11175683	chr7:94286420	PEG10	-0.015	2.49e-06	0.002	0.796
cg16348003	chr1:153589781	S100A14	0.034	3.84e-06	0.012	0.503
cg13422045	chr11:73021272	ARHGEF17	-0.003	8.23e-06	0.002	0.165
cg15104031	chr1:153589528	S100A14	-0.014	8.43e-06	-2.70e-04	0.963
cg01928691	chr2:106016014	FHL2	-0.036	8.78e-06	-0.032	0.093
cg21719937	chr12:5564478	NTF3	-0.003	1.11e-05	6.85e-04	0.634
cg05734494	chr17:57287309	SMG8	0.002	1.14e-05	-5.92e-04	0.441
cg11537121	chr4:184575108	RWDD4	0.003	1.35e-05	-2.80e-04	0.817

All associations were adjusted for age at baseline, sex, smoking (with or without smoking history), and estimated cell-type proportions (B lymphocytes, natural killer cells, CD4⁺T lymphocytes, CD8⁺T lymphocytes, monocytes, neutrophils). No CpG sites in EHBS were significant after adjusting for multiple testing (Bonferroni threshold: 7.56e-08).

Table 3. Top 10 CpGs sites from the epigenome-wide meta-analysis of AD CSF biomarkers in 450 cognitively normal individuals from the EHBS and 122 cognitively normal individuals from ADNI.

A. tTau										
CpG	Position	Gene	Meta-analysis				EHBS		ADNI	
			Effect estimate	p-value	I ²	Het p-value	Effect estimate	p-value	Effect estimate	p-value
cg25530374	chr16:2047171	AC005606.15,ZNF598	-0.016	1.43e-07	0	0.428	-0.015	2.87e-07	-0.035	0.160
cg03586820	chr1:16679780	SZRD1	-0.111	3.84e-07	0	0.593	-0.112	3.31e-07	-0.002	0.993
cg19196826	chr7:3018391	CARD11	0.008	8.77e-07	0	0.669	0.008	8.14e-07	0.003	0.846
cg03376719	chr3:105086940	ALCAM	0.012	9.12e-07	0.68	0.076	0.012	3.49e-07	-0.021	0.253
cg19769827	chr1:203259772	RP11-134P9.3	0.007	1.79e-06	0	0.344	0.007	1.36e-06	-0.013	0.541
cg21719937	chr12:5564478	NTF3	-0.012	2.32e-06	0	0.421	-0.013	1.80e-06	0.012	0.690
cg22546737	chr10:118934495	RP11-501J20.2	0.003	2.75e-06	0	0.382	0.003	4.91e-06	0.009	0.171
cg05104523	chr4:3295914	RGS12	-0.015	2.77e-06	0.63	0.100	-0.014	6.00e-06	-0.073	0.041
cg16602332	chr2:26735409	OTOF	-0.021	2.92e-06	0	0.648	-0.021	2.64e-06	0.008	0.897
cg09766383	chr6:97285174	GPR63	0.021	4.02e-06	0.22	0.257	0.021	2.37e-06	-0.018	0.605
B. pTau										
CpG	Position	Gene	Meta-analysis				EHBS		ADNI	
			Effect estimate	p-value	I ²	Het p-value	Effect estimate	p-value	Effect estimate	p-value
cg25530374	chr16:2047171	AC005606.15,ZNF598	-0.010	2.73e-07	0	0.977	-0.010	5.99e-07	-0.011	0.218
cg19196826	chr7:3018391	CARD11	0.005	2.11e-06	0.61	0.109	0.006	5.65e-07	-7.39e-04	0.849
cg03376719	chr3:105086940	ALCAM	0.007	3.69e-06	0.85	0.010	0.009	2.63e-07	-0.008	0.202
cg05104523	chr4:3295914	RGS12	-0.010	3.86e-06	0.50	0.157	-0.009	2.17e-05	-0.025	0.021
cg06334093	chr6:139094587	CCDC28A	0.008	4.68e-06	0.66	0.086	0.009	1.05e-06	-0.002	0.781
cg03586820	chr1:16679780	SZRD1	-0.067	6.75e-06	0.46	0.174	-0.073	2.64e-06	0.014	0.825
cg22546737	chr10:118934495	RP11-501J20.2	0.002	8.60e-06	0	0.701	0.002	2.16e-05	0.003	0.167
cg00021892	chr1:153582521	S100A16	-0.240	9.35e-06	0	0.851	-0.237	2.57e-05	-0.275	0.161
cg25377744	chr13:47063673	COX17P1	-0.007	9.67e-06	0	0.346	-0.007	3.01e-05	-0.014	0.081
cg21719937	chr12:5564478	NTF3	-0.008	9.98e-06	0.65	0.093	-0.009	3.29e-06	0.008	0.401
C. Aβ42/tTau										
CpG	Position	Gene	Meta-analysis				EHBS		ADNI	
			Effect estimate	p-value	I ²	Het p-value	Effect estimate	p-value	Effect estimate	p-value

CpG	Position	Gene	Effect estimate	p-value	I ²	Het p-value	Effect estimate	p-value	Effect estimate	p-value
cg03586820	chr1:16679780	SZRD1	0.003	3.13e-07	0	0.616	0.003	3.32e-07	0.002	0.546
cg10917153	chr15:42448786	PLA2G4F	9.00e-04	3.40e-06	0	0.935	8.85e-04	3.78e-06	7.51e-04	0.644
cg13974715	chr1:236009306	LYST	0.002	7.49e-06	0	0.499	0.002	5.91e-06	1.61e-04	0.936
cg09340250	chr1:152924562	RP1-13P20.6	-0.003	8.28e-06	0	0.440	-0.003	6.07e-06	-7.17e-05	0.987
cg07311033	chr2:111627862	ACOXL	0.001	1.26e-05	0	0.453	0.001	4.90e-05	0.002	0.077
cg25381285	chr14:102691354	MOK	3.00e-04	2.19e-05	0	0.513	2.68e-04	1.12e-04	4.22e-04	0.061
cg10633103	chr20:43561125	PABPC1L	8.00e-04	2.27e-05	0	0.671	8.00e-04	2.35e-05	4.27e-04	0.618
cg10235683	chr8:142304416	SLC45A4	5.00e-04	2.69e-05	0.41	0.191	4.79e-04	1.36e-05	-4.55e-04	0.519
cg14933468	chr11:62138599	ASRGL1	-0.005	2.70e-05	0	0.577	-0.005	2.38e-05	-0.002	0.787
cg16158487	chr1:33891592	PHC2	-7.00e-04	2.86e-05	0	0.436	-6.78e-04	2.08e-05	-6.41e-06	0.994

D. Aβ42+ vs. Aβ42-

CpG	Position	Gene	Meta-analysis				EHBS		ADNI	
			Effect estimate	p-value	I ²	Het p-value	Effect estimate	p-value	Effect estimate	p-value
cg08216368	chr11:237063	PSMD13	-0.002	2.51e-07	0.07	0.299	-0.002	7.22e-05	-0.003	5.55e-04
cg17394795	chr9:96628794	RP11-53B5.1	-0.010	4.67e-07	0.85	0.010	-0.007	0.002	-0.019	2.05e-06
cg18890561	chr10:131988419	GLRX3	-0.012	2.78e-06	0	0.774	-0.013	1.16e-05	-0.011	0.093
cg27504433	chr7:6741096	ZNF12	0.002	4.74e-06	0	0.450	0.002	5.96e-06	0.001	0.315
cg18407095	chr2:26846581	CIB4	-0.011	5.14e-06	0	0.922	-0.011	2.25e-05	-0.010	0.092
cg13589108	chr1:177140680	BRINP2	0.004	5.99e-06	0	0.776	0.004	4.75e-05	0.005	0.045
cg05961166	chr21:26864304	snoU13	-0.017	6.86e-06	0.48	0.166	-0.013	0.003	-0.024	2.46e-04
cg16182707	chr12:105478090	ALDH1L2	0.007	7.58e-06	0	0.555	0.007	0.001	0.008	0.002
cg07767421	chr16:5059086	SEC14L5	-0.010	7.68e-06	0.57	0.129	-0.008	9.25e-04	-0.017	7.54e-04
cg06769708	chr20:35060706	DLGAP4	0.001	9.66e-06	0.05	0.305	0.001	7.90e-06	5.97e-04	0.415

E. pTau+ vs. pTau-

CpG	Position	Gene	Meta-analysis				EHBS		ADNI	
			Effect estimate	p-value	I ²	Het p-value	Effect estimate	p-value	Effect estimate	p-value
cg01928691	chr2:106016014	FHL2	-0.035	2.05e-06	0	0.857	-0.036	8.78e-06	-0.032	0.093
cg22207257	chr1:193361991	LINC01031	0.003	3.92e-06	0.02	0.312	0.003	8.99e-05	0.005	0.008

cg18254930	chr3:3646624	AC026188.1	0.007	5.08e-06	0.82	0.018	0.009	2.85e-07	-3.46e-04	0.921
cg12031108	chr12:28115086	PTHLH	0.005	5.54e-06	0.77	0.038	0.003	0.011	0.008	1.80e-05
cg16348003	chr1:153589781	S100A14	0.030	6.41e-06	0.30	0.231	0.034	3.84e-06	0.012	0.503
cg18958053	chr15:55348892	RP11-548M13.1	0.034	8.27e-06	0.32	0.225	0.029	0.001	0.050	0.001
cg02671700	chr8:64523255	RN7SKP135	0.012	8.40e-06	0	0.818	0.012	1.21e-04	0.013	0.024
cg16882206	chr8:115466108	RP11-393K19.1	0.005	8.51e-06	0	0.998	0.005	1.45e-05	0.005	0.312
cg10935297	chr14:35255491	BAZ1A	0.002	1.30e-05	0	0.559	0.002	2.18e-05	0.001	0.250
cg02777461	chr13:63801462	LINC00376	0.025	1.50e-05	0	0.679	0.027	8.03e-05	0.021	0.067

All associations were adjusted for age at baseline, sex, smoking (with or without smoking history), and estimated cell-type proportions (B lymphocytes, natural killer cells, CD4⁺T lymphocytes, CD8⁺T lymphocytes, monocytes, neutrophils). Bonferroni threshold: 7.60e-08 . Associations that remained significant after adjusting for multiple testing are highlighted in **bold**.

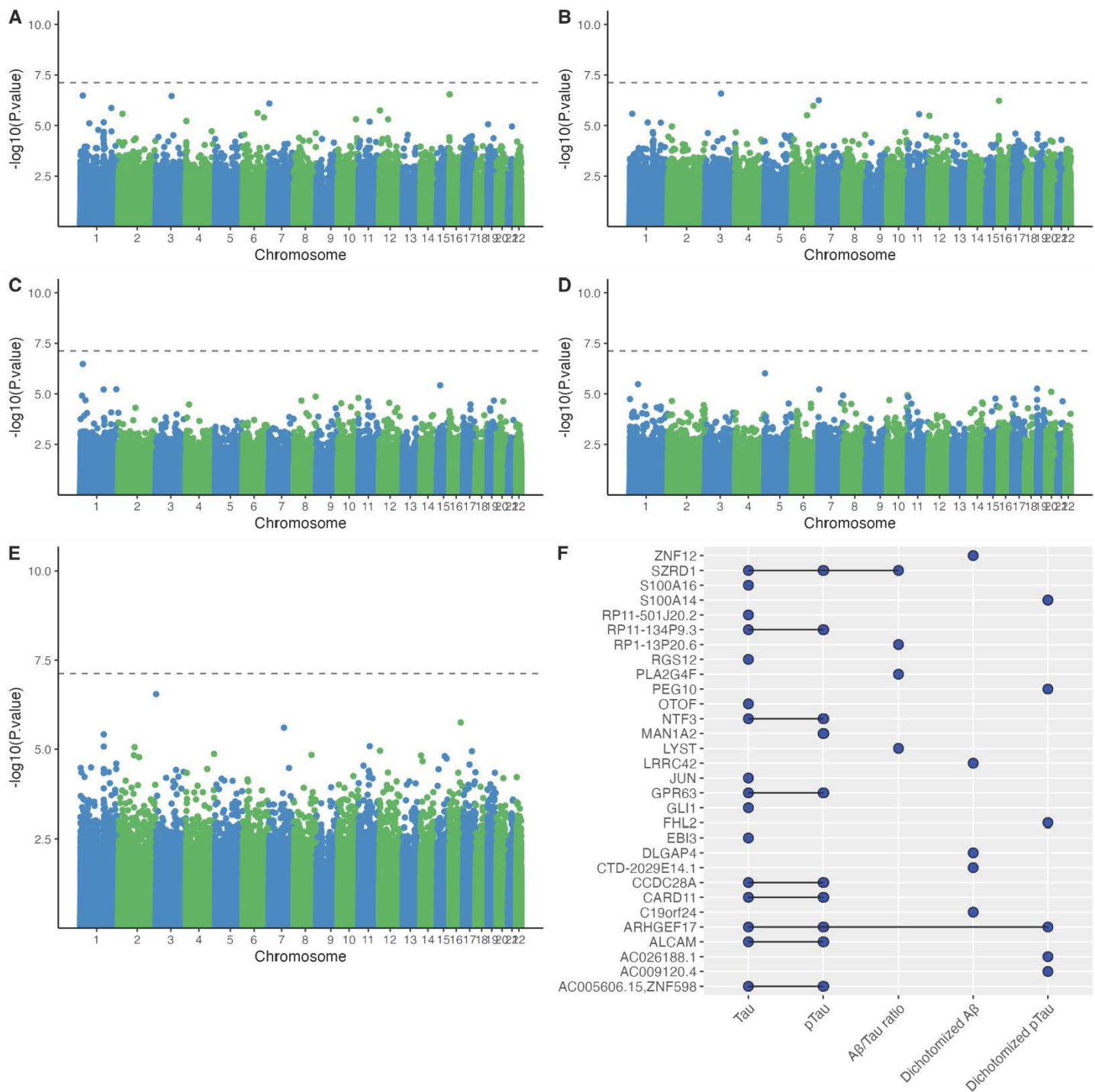


Figure 1. EWAS of AD CSF biomarkers in 450 cognitively normal EHBS participants. Manhattan plots for the association between DNAm beta values and **A.** Tau, **B.** pTau, **C.** Aβ/Tau ratio, **D.** Aβ+/-, **E.** pTau+/- . The dotted line represents the Bonferroni threshold ($p = 7.55 \times 10^{-8}$). **F.** UpSet plot showing overlapping associations across the five CSF biomarkers (tTau, pTau, Aβ42/tTau, Aβ42+/-, pTau+/-). A blue dot represents an association between DNAm beta values and the corresponding CSF biomarker with a p-value $< 1 \times 10^{-5}$ for at least one CpG site assigned to the corresponding gene. All associations were adjusted for age at baseline, sex, smoking (with or without smoking history), and estimated cell-type proportions (B lymphocytes, natural killer cells, CD4⁺ T lymphocytes, CD8⁺ T lymphocytes, monocytes, neutrophils).

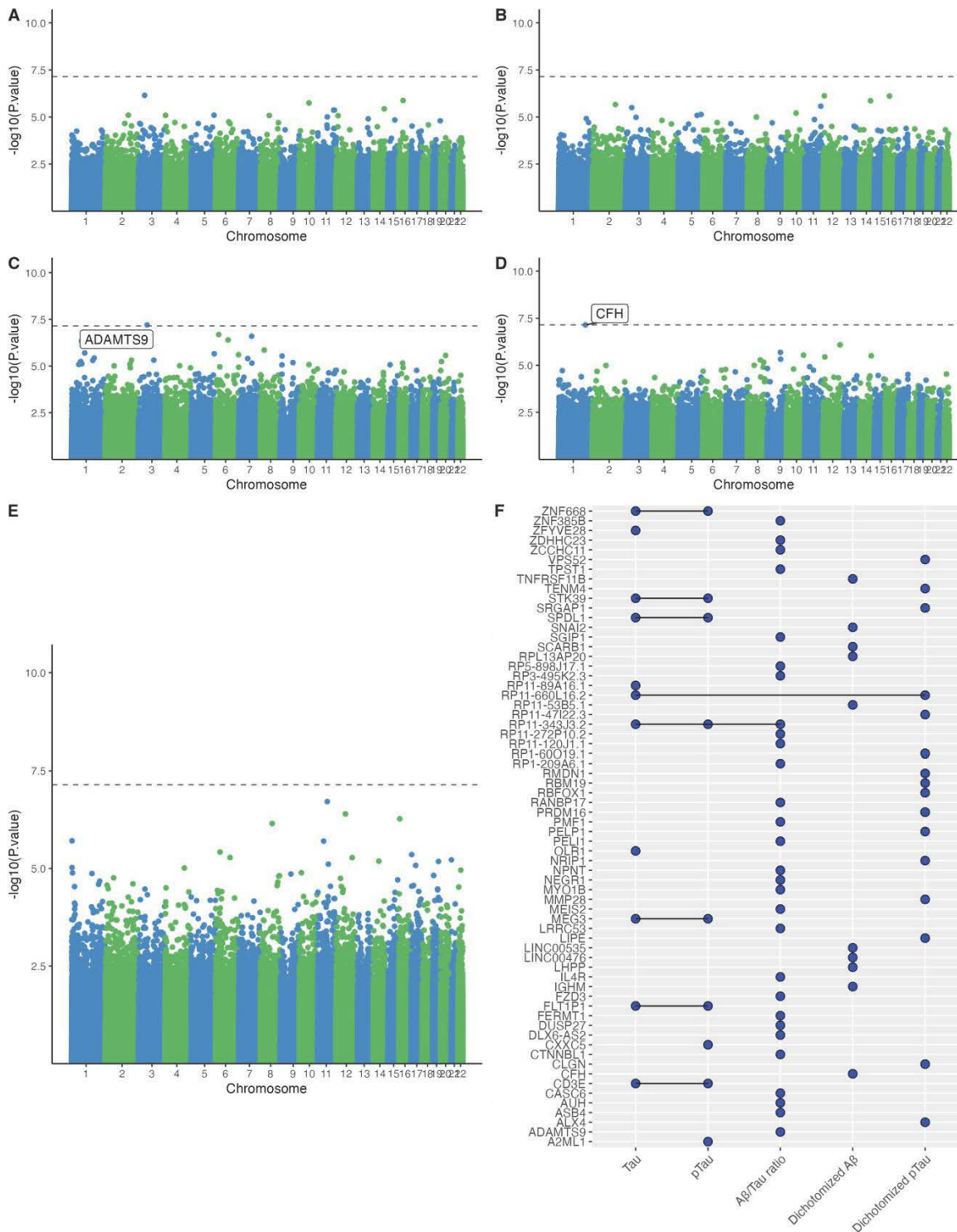


Figure 2. EWAS of AD CSF biomarkers in 122 cognitively normal ADNI participants. Manhattan plots for the association between DNAm beta values and **A. Tau**, **B. pTau**, **C. Aβ/Tau ratio**, **D. Aβ+/-**, **E. pTau+/-**. The dotted line represents the Bonferroni threshold ($p = 7.15 \times 10^{-8}$). **F.** UpSet plot showing overlapping associations across the five CSF biomarkers (tTau, pTau, Aβ42/tTau, Aβ42+/-, pTau+/-). A blue dot represents an association between DNAm beta values and the corresponding CSF biomarker with a p-value $< 1 \times 10^{-5}$ for at least one CpG site assigned to the corresponding gene.