

# 1 Trends in gestational age at birth in the city of São Paulo, 2 Brazil between 2012 and 2019

3 Margarida Maria Tenório de Azevedo Lira<sup>1¶</sup>, Marina de Freitas<sup>1¶</sup>, Eliana de Aquino Bonilha<sup>2¶</sup>, Célia  
4 Maria Castex Aly<sup>1¶</sup>, Patrícia Carla dos Santos<sup>1</sup>, Denise Yoshie Niy<sup>3¶\*</sup>, Carmen Simone Grilo Diniz<sup>4¶</sup>

5

6

7 <sup>1</sup>Potential Pregnancy Days Lost Study, São Paulo, Brazil

8 <sup>2</sup>São Camilo University Center, São Paulo, Brazil

9 <sup>3</sup>Gender, Evidence and Health Study Group, School of Public Health, University of São Paulo, São  
10 Paulo, Brazil

11 <sup>4</sup>Department of Health and Life Cycles, School of Public Health, University of São Paulo, São Paulo,  
12 Brazil

13

14 \*Corresponding author

15 E-mail: [denise.niy@gmail.com](mailto:denise.niy@gmail.com) (DYN)

16

17 <sup>¶</sup>These authors contributed equally to this work.

18 This study is part of the “**Potential pregnancy days lost**” (PPDL) project, which provides an  
19 innovative measure of gestational age to assess maternal and child health interventions and outcomes.

20 The project was developed in partnership with the São Paulo City Department of Health, Bill & Melinda  
21 Gates Foundation (reference number OPP1201939), and National Council for Scientific and  
22 Technological Development (reference number 443775/2018 – Fundação Bill e Melinda  
23 Gates/CNPq/DECIT-MS).

24

25

**NOTE: This preprint reports new research that has not been certified by peer review and should not be used to guide clinical practice.**

## 26 **Abstract**

27 Studies have shown that excessive obstetric interventions such as induced labor and caesarean sections  
28 have contributed to the shortening of the length of gestation, leading to a left shift in gestational age  
29 (GA) at birth. The aim of this study was to analyze trends in GA and the contribution of associated  
30 factors to changes in São Paulo city, Brazil during the period 2012-2019. We conducted an ecological  
31 time-series study of births in São Paulo using data from Brazil's national live births information system  
32 (SINASC). We calculated the average annual percent change in the proportion of births by GA between  
33 2012 and 2019 and between the first and second four-year periods of the time series by applying log  
34 transformation to the percentages, followed by Prais-Winsten regression. A total of 1,525,759 live births  
35 were analyzed. From 2015, there was an increase in the proportion of live births between 39 and 40  
36 weeks from 2015 and a fall in the proportion of early term (37-38 weeks) and preterm (< 37 weeks)  
37 births throughout the study period. The average annual increase in the proportion of births at 39 and 40  
38 weeks was 7.9% and 5.7%, respectively, while the proportion of births at other gestational ages showed  
39 a statistically significant reduction over the study period. These reductions were more pronounced in  
40 the first four-year period (2012-2015). The same trend was observed when the data were analyzed by  
41 type of delivery, type of service (public or private), maternal age, and maternal education level. The  
42 findings show that there was a right shift in the GA curve during the study period and a reduction in the  
43 proportion of preterm and early term births. These changes were more pronounced in births that  
44 occurred in private hospitals. These changes reflect public policies implemented to reduce obstetric  
45 interventions such as induced labor and caesarean section before labor, especially before 39 weeks of  
46 gestation.

## 47 48 **Introduction**

49 Length of gestation is one of the leading predictors of newborn health outcomes. Gestational age (GA)  
50 can be estimated using different methods and is generally measured in completed weeks. Until recently,  
51 GA was treated as a binary question, with newborns being considered either preterm (< 37 weeks) or

52 term (37 0/7 to 41 6/7 weeks), justifying interventions such as labor induction or caesarean section from  
53 37 weeks, when fetal development may not be complete. Studies have shown that the term period should  
54 not be treated uniformly, as early term infants (37-38 weeks) tend to have a higher risk of morbidity  
55 and mortality than those born between 39 and 41 weeks, often showing similar outcomes to late preterm  
56 infants [1–7]. In 2013, the American College of Obstetricians and Gynecologists [8] proposed a  
57 different classification of GA, dividing the term period into three categories: early term (37-38 weeks),  
58 full term (39-40 weeks), and late term (41 weeks).

59 Brazil's national live births information system (SINASC) used to record GA as a categorical variable  
60 in weekly intervals up to 2010, until the Certificate of Live Birth (CLB) was modified to record this  
61 information as a continuous variable. This change enabled a more comprehensive analysis of the  
62 distribution of GA. In the city of São Paulo, the new CLB began to be used in 2011, but full  
63 implementation across all health facilities only occurred in 2012.

64 The average physiological length of pregnancy is 280 days, or 40 weeks [9,10]. However, interventions  
65 such as scheduled labor induction or caesarean section can shorten the length of gestation [7,11,12]. In  
66 Brazil, caesarean section rates have been far higher than the World Health Organization recommended  
67 rate of 15% for decades, reaching 57% in the general population [13,14].

68 In a study investigating the contribution of private sector deliveries in the city of São Paulo to reductions  
69 in length of gestation, Diniz et al. [5] found a one-week left shift in GA in infants born by caesarean  
70 section through the private health system; the same result was reported by Raspantini et al [15]. A study  
71 in Australia [7] investigating trends in the distribution of GA and the contribution of planned births  
72 (induced labor and elective caesarean section) to changes also observed a left shift in GA at birth and  
73 the findings suggest a changing pattern towards fewer births commencing spontaneously and increasing  
74 planned births.

75 The aim of this study was to analyze trends in GA at birth and the contribution of associated factors in  
76 the city of São Paulo during the period 2012-2019.

77

## 78 **Materials and methods**

## 79 **Type of study and data source**

80 We conducted an ecological time-series study of births that occurred in the city of São Paulo (SP) in  
81 the period 2012-2019 using data from the SINASC. Data were accessed for research purposes in  
82 22/03/2022.

83

## 84 **Study population**

85 We studied liveborns delivered in public and private hospitals at 22 to 45 weeks of gestation weighing  
86  $\geq 500$  grams born to mothers aged between 10 and 49 years. Births without information on type of  
87 delivery, GA, and type of pregnancy were excluded (Table 1).

88 A total of 1,525,759 live births were recorded in SP between 2012 and 2019. Of these, 12,382 (0.8%)  
89 were excluded because they did not meet the inclusion criteria (mothers aged under 10 or over 49 years  
90 or maternal age not recorded, 272; type of pregnancy not recorded, 40; GA at birth under 22 or over 45  
91 weeks, 4,388; birth weight  $< 500$  grams, 922; out-of-hospital births, 6,746; and type of delivery not  
92 recorded, 14), resulting in a final sample of 1,513,377 (99.2%) (Table 1).

93

94 Table 1. Study population and exclusions. City of São Paulo, Brazil, 2012-2019.

Exclusion criteria	Exclusions	Study population
Total		1,525,759
Mothers aged under 10 and over 49 years or maternal age not recorded	272	1,525,487
Type of pregnancy not recorded	40	1,525,447
GA at birth under 22 or over 45 weeks	4,388	1,521,059
Birth weight $< 500$ grams	922	1,520,137
Out-of-hospital births	6,746	1,513,391
Type of delivery not recorded	14	1,513,377

95

96 The results of the exploratory analysis showed that the GA curves for all live births and singleton births  
97 overlapped. These types of pregnancy were therefore analyzed together for the purposes of the present  
98 study (Fig 1).

99

100 **Figure 1. Live births by type of pregnancy. City of São Paulo, Brazil, 2012-2019.**

101

## 102 **Statistical analysis**

103 First we performed a descriptive statistical analysis of the data, followed by an analysis of trends in GA  
104 at birth by calculating the average annual percent change in the proportion of live births over the period  
105 2012-2019. The results showed an increase in the proportion of births between 39 and 40 weeks from  
106 2015. Differences in percent change rates were particularly pronounced between private and public  
107 sector births and type of delivery (data not shown). We therefore opted to compare the first and last  
108 four-year periods (2012-2015 and 2016-2019, respectively) (Fig 2).

109 Percent change rate was calculated by applying log transformation to the percentages, followed by  
110 Prais-Winsten regression [16] to estimate annual percent change ( $\beta_1$ ) in births by GA. Posteriormente,  
111 os valores de  $\beta_1$  obtidos foram aplicados à seguinte fórmula, em vista da identificação das taxas de  
112 variação:

$$113 \text{Rate} = [-1 + e^{\beta_1}] \times 100$$

114 The confidence intervals (CI) of the percent change rates were calculated based on the maximum and  
115 minimum  $\beta$  values using the following formula:

$$116 {}^{95\%}\text{CI} = [-1 + 10^{\beta_{\text{minimum}}} \times 100; -1 + 10^{\beta_{\text{maximum}}} \times 100]$$

117 The null hypothesis (H0) was that the trend is stationary, i.e. there is no significant difference between  
118 the percent change rate and zero, adopting a 95% confidence level. Depending on the percent change  
119 rate, the trend may either be increasing (positive value), decreasing (negative value), or stationary, when  
120 the null hypothesis is accepted. Data processing and analysis was performed using SPSS and R.

121

## 122 **Results**

123 Table 2 shows that the annual number of live births fell by 8.1% over the study period. The proportion  
124 of teenage mothers decreased over the period, while the percentage of mothers aged 35 years and over,  
125 mothers with a higher level of education, and multiple pregnancies increased. Deliveries were

126 predominantly caesarean sections, with rates remaining constantly above 50%, although the proportion  
127 of this type of delivery fell slightly over the study period. The proportion of pre-labor caesarean sections  
128 was high, with rates reaching almost 70% throughout the time series.

129 The proportion of induced labor vaginal births fell over the period, from 55.0% in 2012 to 27.7% in  
130 2019. With regard to length of gestation, the rate of full-term births (39-40 weeks) increased from 43.5%  
131 in 2012 to 53.0% in 2019, while the proportion of births at other gestational ages decreased. The rate  
132 of preterm births fell from 12.1% in 2012 to 10.4% in 2015 and remained relatively stable thereafter  
133 (Table 2).

134

135 **Table 2. Annual number of live births and proportions according to maternal sociodemographic**  
136 **and birth characteristics. City of São Paulo, Brazil, 2012-2019.**

	2012	2013	2014	2015	2016	2019
<b>All Newborn</b>	<b>191.827</b>	<b>191.549</b>	<b>196.780</b>	<b>196.813</b>	<b>187.624</b>	<b>196.813</b>
<b>Maternal age (years)</b>						
< 20	12,5	12,4	12,2	11,7	11,2	11,2
20-34	70,5	69,9	69,2	68,9	68,5	68,5
35 and over	17,0	17,7	18,6	19,4	20,4	20,4
<b>Maternal education (years)</b>						
Did not complete elementary school	20,7	19,0	17,8	16,7	15,8	15,8
Completed high school	50,6	50,7	50,3	50,5	50,7	50,7
Completed or undergoing higher education	28,6	30,2	31,8	32,7	33,4	33,4
<b>Mode of delivery</b>						
vaginal	42,5	41,2	42,0	43,7	44,0	44,0
cesarean	57,5	58,8	58,0	56,3	56,0	56,0
<b>Labor induction</b>						
Induced vaginal	55,0	55,0	49,2	44,6	39,7	39,7
Cesarean	13,9	12,7	12,6	12,5	12,3	12,3
<b>CS before labor (only CS)</b>						
Yes	68,2	69,9	69,7	67,5	66,7	66,7
No	26,8	27,2	27,5	30,1	30,8	30,8
NA/ignored	2,9	1,6	1,6	1,3	1,5	1,5
<b>Type of pregnancy</b>						
Singleton	97,3	97,1	97,1	97,1	97,1	97,1
Multiple	2,7	2,9	2,9	2,9	2,9	2,9
<b>Gestational age (weeks)</b>						
< 37	12,1	11,5	10,9	10,4	10,5	10,5
37 - 38	35,7	36,6	35,9	33,4	31,8	31,8

39 - 40	43,5	44,5	46,4	50,1	51,5	5
41	6,3	5,8	5,6	5,2	5,2	4
42 and over	2,4	1,6	1,2	0,9	1,0	0
<b>Birth weight (g)</b>						
< 2,500	9,6	9,6	9,4	9,4	9,5	9
2,500-2,999	24,8	24,9	24,7	24,1	23,9	2
3,000-3,999	61,6	61,6	62,0	62,4	62,5	6
≥ 4,000	3,9	3,9	3,9	4,1	4,1	4
<b>Type of service</b>						
Public	54,6	53,7	54,0	54,4	55,7	5
Private	45,4	46,3	46,0	45,6	44,3	4
<b>Mother's municipality of residence</b>						
São Paulo	86,6	86,2	85,2	85,5	85,3	8
Other	13,4	13,8	14,8	14,5	14,7	1

137 **Note:** percentages of labor induced births were calculated separately based on total live births for each  
 138 type of delivery.

139

140 Figure 2 shows that the proportion of live births between 30 and 35 weeks remained stable over the  
 141 study period, while the proportion of births between 36 and 38 weeks fell from 2015, when the  
 142 percentage of births between 39 and 40 weeks increased.

143

144 **Figure 2. Distribution of live births by gestational age. City of São Paulo, Brazil, 2012-2019.**

145

146 Figure 3 shows that the most common GA for both spontaneous and induced labor vaginal births was  
 147 39 weeks throughout the period. There was an increase in the proportion of spontaneous vaginal births  
 148 at 39 and 40 weeks over the study period. The proportion of induced labor vaginal births at 39 weeks  
 149 increased up to 2015, while the proportion of this type of birth at 40 weeks increased over the whole  
 150 period at a proportionately higher rate than spontaneous vaginal births.

151

152 **Figure 3. Distribution of spontaneous (a) and induced labor (b) vaginal births by gestational age.**  
 153 **City of São Paulo, 2012-2019.**

154

155 There was an increase in the proportion of intrapartum caesarean sections at 39 and 40 weeks up to  
 156 2015, with rates levelling off in the second four-year period, especially for births at 40 weeks. The most  
 157 common gestational age for pre-labor caesarean sections was 38 weeks up to 2015, shifting to 39 weeks  
 158 between 2016 and 2019, with rates remaining above 30% (Fig 4).

159

160 **Figure 4. Distribution of intrapartum (a) and pre-labor (b) caesarean section births by gestational**  
 161 **age. City of São Paulo, 2012-2019.**

162

163 There was an increase in the proportion of births at 39 and 40 weeks in public hospitals and normal  
 164 birth centers over the study period, while in private facilities there was a reduction in the proportion of  
 165 births at 38 weeks from 2015 and increase in the percentage of births at 39 weeks (Fig 5).

166

167 **Figure 5. Distribution of live births in public (a) and private (b) hospitals by gestational age. City**  
 168 **of São Paulo, Brazil, 2012-2019.**

169

170 The average annual increase in the proportion of births at 39 and 40 weeks was 7.9% and 5.7%,  
 171 respectively, while the proportion of births at other gestational ages showed a statistically significant  
 172 reduction over the study period. These reductions were more pronounced in the first four-year period  
 173 (2012-2015). There was also a substantial decline in the proportion of births at less than 37 weeks  
 174 gestation over the study period. This reduction was also more pronounced in the period 2012-2015  
 175 (Table 3).

176

177 **Table 3. Average annual percent change in proportion of live births by gestational age. City of**  
 178 **São Paulo, 2012-2019.**

GA	2012 to 2015		2016 to 2019		2012 to 2019	
	rate (%)	95% CI	rate (%)	95% CI	rate (%)	95% CI
< 34	-9,2 *	(-13.1;-5.1)	-2,7 *	(-2.7;-2.7)	-3,4 *	(-6.0;-0.7)
34	-3,4	(-26.3;26.7)	-5,4 *	(-5.4;-5.4)	-4,3 *	(-8.4;0.0)
35	-11,1 *	(-17.4;-4.3)	-2,1	(-11.0;7.7)	-5,4 *	(-8.9;-1.7)



<b>36</b>	<b>-10,7 *</b> (-15.1;-6.0)	<b>1,6 *</b> (1.6;1.6)	<b>-4,7 *</b> (-8.3;-1.0)
<b>37</b>	<b>-10,7 *</b> (-17.6;-3.2)	<b>-0,2 *</b> (-0.2;-0.2)	<b>-6,2 *</b> (-10.7;-1.5)
<b>38</b>	<b>-2,5</b> (-11.4;7.2)	<b>-2,1 *</b> (-2.8;-1.3)	<b>-4,9 *</b> (-7.5;-2.3)
<b>39</b>	<b>12,2 *</b> (6.6;18.1)	<b>2,8 *</b> (2.1;3.6)	<b>7,9 *</b> (4.4;11.5)
<b>40</b>	<b>6,4 *</b> (6.4;6.4)	<b>1,6 *</b> (1.6;1.6)	<b>5,7 *</b> (2.8;8.6)
<b>41</b>	<b>-12,7 *</b> (-14.6;-10.8)	<b>-8,4 *</b> (-10.4;-6.3)	<b>-9,2 *</b> (-10.7;-7.7)
<b>42 and over</b>	<b>-52,8 *</b> (-55.2;-50.3)	<b>-26,2 *</b> (-26.2;-26.2)	<b>-33,6 *</b> (-43.0;-22.7)

179 \*p < 0.05 rejects the null hypothesis.

180

181 Table 4 shows that there was a positive annual percent change in the proportion of vaginal births at 38  
 182 to 40 weeks over the study period. For births at 37 weeks, the annual percent change over the study  
 183 period was negative (-7.3%) for caesarean births and positive for vaginal births (+1.2%).

184 In the period 2012-2015, the annual percent change in the proportion of caesarean births at 37 weeks  
 185 was -12.1%, compared to -6.9% for vaginal births. This difference was statistically significant. The  
 186 proportion of preterm births decreased across all gestational ages under 37 weeks. This reduction was  
 187 greater in vaginal births.

188

189 **Table 4. Annual percent change in the proportion of live births according to gestational age by**  
 190 **type of delivery. City of São Paulo, 2012-2019.**

GA	2012 to 2019					2012 to 2015				
	vaginal		cesarean		t- test	vaginal		cesarean		t- test
	rate (%)	95%CI	rate (%)	95%CI		rate (%)	95%CI	rate (%)	95%CI	
<b>&lt; 34</b>	<b>-10,9 *</b>	(-14.7;-6.9)	<b>1,9</b>	(-0.9;4.7)		<b>0,2 *</b>	(0.2;0.2)	<b>-3,2</b>	(-10.0;4.2)	
<b>34</b>	<b>-9,4 *</b>	(-14.7;-3.8)	<b>-0,9</b>	(-3.6;1.8)	**	<b>-9,8</b>	(-42.3;41.0)	<b>0,5</b>	(-15.1;18.9)	
<b>35</b>	<b>-9,0 *</b>	(-12.4;-5.5)	<b>-2,1</b>	(-6.2;2.3)	**	<b>-14,7 *</b>	(-25.8;-1.9)	<b>-8,4 *</b>	(-12.3;-4.3)	**
<b>36</b>	<b>-7,1 *</b>	(-10.6;-3.5)	<b>-2,9</b>	(-7.1;1.4)	**	<b>-13,9 *</b>	(-18.8;-8.7)	<b>-6,2 *</b>	(-6.2;-6.2)	**
<b>37</b>	<b>-3,4 *</b>	(-6.0;-0.7)	<b>-7,3 *</b>	(-12.7;-1.6)	**	<b>-6,9 *</b>	(-7.6;-6.2)	<b>-12,1 *</b>	(-21.2;-1.9)	**
<b>38</b>	<b>1,2 *</b>	(0.6;1.7)	<b>-7,5 *</b>	(-11.0;-3.9)	**	<b>1,4 *</b>	(1.4;1.4)	<b>-4,1</b>	(-15.3;8.7)	**
<b>39</b>	<b>5,4 *</b>	(2.6;8.3)	<b>10,2 *</b>	(5.5;15.1)	**	<b>11,2 *</b>	(9.6;12.8)	<b>13,0 *</b>	(2.7;24.3)	
<b>40</b>	<b>4,2 *</b>	(2.5;5.9)	<b>6,4 *</b>	(1.3;11.8)	**	<b>7,9 *</b>	(5.5;10.3)	<b>10,7 *</b>	(0.6;21.7)	
<b>41</b>	<b>-12,5 *</b>	(-14.4;-10.6)	<b>-6,5 *</b>	(-8.5;-4.4)	**	<b>-14,1 *</b>	(-14.1;-14.1)	<b>-8,8 *</b>	(-15.9;-1.1)	**
<b>42 and over</b>	<b>-37,3 *</b>	(-48.2;-24.2)	<b>-29,9 *</b>	(-38.1;-20.5)		<b>-58,7 *</b>	(-59.9;-57.5)	<b>-46,0 *</b>	(-48.4;-43.6)	**

191 \*p < 0.05 rejects the null hypothesis.

192 \*\*Statistically significant differences in percent change between vaginal and cesarean births ( $p < 0.05$ ).

193

194 Table 5 shows that there was a positive annual percent change in the proportion of births at 39 and 40  
 195 weeks throughout the study period for births in both public and private hospitals. This change was more  
 196 pronounced in the period 2012-2019 and for births in private facilities. The proportion of births at 37  
 197 weeks decreased over the period 2012-2015 in both public and private hospitals (-5.4% versus 14.1%),  
 198 while the proportion of births at 39 weeks increased (+11.9% versus +13.5%). The findings also show  
 199 that there was a reduction in the proportion of late preterm births in both public and private hospitals  
 200 (Table 5).

201

202 **Table 5. Annual percent change in the proportion of live births according to gestational age by**  
 203 **system (public or private). City of São Paulo, 2012-2019.**

IG	2012 to 2019					2012 to 2015				
	public		private		t-test	public		private		t-test
	rate (%)	95%CI	rate (%)	95%CI		rate (%)	95%CI	rate (%)	95%CI	
<b>&lt; 34</b>	<b>-4,5 *</b>	(-8.6;-0.2)	<b>-2,3 *</b>	(-3.3;-1.2)	**	<b>-12,7 *</b>	(-15.2;-10.1)	-4,5	(-10.6;2.0)	**
<b>34</b>	-4,7	(-10.7;1.7)	<b>-3,6 *</b>	(-5.2;-2.0)		-2,5	(-39.9;58.1)	0,0	(0.0;0.0)	
<b>35</b>	<b>-5,2 *</b>	(-9.2;-0.9)	<b>-4,9 *</b>	(-9.0;-0.7)		-11,7	(-21.5;-0.7)	<b>-10,5 *</b>	(-12.4;-8.5)	
<b>36</b>	<b>-3,6 *</b>	(-7.7;0.7)	<b>-5,6 *</b>	(-9.6;-1.4)		<b>-11,1 *</b>	(-14.9;-7.1)	<b>-7,7 *</b>	(-7.7;-7.7)	**
<b>37</b>	-2,5	(-5.6;0.7)	<b>-8,4 *</b>	(-13.7;-2.7)	**	<b>-5,4 *</b>	(-5.4;-5.4)	<b>-14,1 *</b>	(-24.2;-2.7)	**
<b>38</b>	<b>0,7 *</b>	(0.1;1.2)	<b>-7,3 *</b>	(-10.8;-3.7)	**	<b>1,2 *</b>	(1.2;1.2)	-4,9	(-17.3;9.3)	**
<b>39</b>	<b>5,4 *</b>	(2.6;8.3)	<b>11,7 *</b>	(5.8;17.9)	**	<b>11,9 *</b>	(11.9;11.9)	<b>13,5 *</b>	(0.2;28.6)	
<b>40</b>	<b>4,0 *</b>	(1.8;6.3)	<b>6,9 *</b>	(0.7;13.5)	**	<b>8,1 *</b>	(7.4;8.9)	13,2	(-2.9;32.1)	
<b>41</b>	<b>-12,9 *</b>	(-14.3;-11.5)	-0,5	(-4.2;3.4)	**	<b>-13,3 *</b>	(-13.3;-13.3)	-1,4	(-20.8;22.9)	**
<b>42 e +</b>	<b>-36,9 *</b>	(-47.3;-24.5)	<b>-24,7 *</b>	(-30.2;-18.7)	**	<b>-57,0 *</b>	(-57.0;-57.0)	<b>-35,4 *</b>	(-35.4;-35.4)	**

204 \* $p < 0.05$  rejects the null hypothesis.

205 \*\*Statistically significant differences in percent change between public and private services ( $p < 0.05$ ).

206

207 Table 6 shows that there was a significant positive annual percent change in the proportion of births at  
 208 39 and 40 weeks across all age groups and levels of education. Rates were higher among mothers aged  
 209 35 years and over and who had completed more than 12 years of education.

210

211 **Table 6. Annual percent change in the proportion of live births according to gestational age by**

212 **maternal age and education level. City of São Paulo, 2012-2019.**

GA	maternal age (years)					
	< 20		20 to 34		35 and over	
	rate (%)	95%CI	rate (%)	95%CI	rate (%)	95%CI
<b>&lt; 34</b>	<b>-4,5 *</b>	(-8.6;-0.2)	<b>-3,6 *</b>	(-5.7;-1.5)	<b>-2,3</b>	(-5.9;1.5)
<b>34</b>	<b>-5,8</b>	(-13.2;2.2)	<b>-5,2 *</b>	(-8.2;-2.0)	<b>-3,2</b>	(-8.8;2.8)
<b>35</b>	<b>-7,3 *</b>	(-9.3;-5.3)	<b>-5,2 *</b>	(-8.7;-1.5)	<b>-5,4</b>	(-10.4;-0.0)
<b>36</b>	<b>-4,7 *</b>	(-6.8;-2.6)	<b>-5,8 *</b>	(-9.3;-2.2)	<b>-4,7</b>	(-9.8;0.6)
<b>37</b>	<b>-5,4 *</b>	(-6.4;-4.3)	<b>-7,3 *</b>	(-11.7;-2.7)	<b>-6,9 *</b>	(-11.8;-1.7)
<b>38</b>	<b>0,7</b>	(-0.4;1.8)	<b>-6,2 *</b>	(-8.8;-3.7)	<b>-5,6 *</b>	(-9.1;-1.9)
<b>39</b>	<b>5,4 *</b>	(3.2;7.8)	<b>8,1 *</b>	(5.2;11.1)	<b>9,1 *</b>	(3.9;14.6)
<b>40</b>	<b>4,5 *</b>	(1.7;7.4)	<b>7,2 *</b>	(4.3;10.1)	<b>7,9 *</b>	(4.4;11.5)
<b>41</b>	<b>-12,3 *</b>	(-15.1;-9.4)	<b>-7,5 *</b>	(-9.0;-6.0)	<b>-5,2 *</b>	(-7.7;-2.5)
<b>42 and over</b>	<b>-35,9 *</b>	(-45.2;-24.9)	<b>-32,1 *</b>	(-42.3;-20.0)	<b>-32,5 *</b>	(-40.8;-23.1)

GA	education (years)					
	No education/up to 8		9 to 11		12 and over	
	rate (%)	95%CI	rate (%)	95%CI	rate (%)	95%CI
<b>&lt; 34</b>	<b>-3,8</b>	(-8,9;1,5)	<b>-3,4</b>	(-7,0;0,4)	<b>-1,8</b>	(-3,9;0,3)
<b>34</b>	<b>-6,0</b>	(-13,4;2,0)	<b>-3,8</b>	(-7,9;0,4)	<b>-3,8 *</b>	(-5,4;-2,3)
<b>35</b>	<b>-3,6</b>	(-9,2;2,3)	<b>-4,1 *</b>	(-7,6;-0,3)	<b>-6,9 *</b>	(-10,4;-3,3)
<b>36</b>	<b>-2,7</b>	(-7,9;2,7)	<b>-4,9 *</b>	(-8,5;-1,2)	<b>-6,0 *</b>	(-10,0;-1,8)
<b>37</b>	<b>-2,3</b>	(-5,9;1,5)	<b>-6,0 *</b>	(-9,5;-2,4)	<b>-9,6 *</b>	(-15,4;-3,5)
<b>38</b>	<b>0,7 *</b>	(0,7;0,7)	<b>-4,7 *</b>	(-6,3;-3,2)	<b>-9,4 *</b>	(-13,3;-5,4)
<b>39</b>	<b>5,7 *</b>	(2,8;8,6)	<b>7,2 *</b>	(4,3;10,1)	<b>10,4 *</b>	(4,6;16,6)
<b>40</b>	<b>4,0 *</b>	(0,1;8,0)	<b>5,7 *</b>	(3,4;8,0)	<b>14,3 *</b>	(7,1;22,0)
<b>41</b>	<b>-14,1 *</b>	(-15,0;-13,2)	<b>-9,6 *</b>	(-11,1;-8,1)	<b>9,6 *</b>	(5,5;13,9)
<b>42 and over</b>	<b>-36,9 *</b>	(-46,1;-26,1)	<b>-33,3 *</b>	(-42,7;-22,3)	<b>-18,5 *</b>	(-26,1;-10,1)

213 \*p < 0.05 rejects the null hypothesis.

214

## 215 Discussion

216 Our findings show that there was a decrease in the proportion of preterm (< 37 weeks) and early term

217 (37-38 weeks) births between 2012 and 2019 and an increase in the proportion of births at 39 and 40

218 weeks from 2015. The caesarean section rate declined over the study period. However, this method  
219 remained the most common type of delivery, with rates being higher in private hospitals. The increase  
220 in the proportion of births at 39 and 40 weeks was higher for births by caesarean section.

221 The results also show that there was a reduction in the proportion of labor induced births over the study  
222 period. This may be partially explained by the modification to the CLB in 2011. Data quality has  
223 improved over time, especially in the city of São Paulo, where health professionals have received  
224 training on how to complete the form and the importance of differentiating between induced and natural  
225 labor [17].

226 International studies have reported a left shift in GA at birth [1,7] and increase in rates of late preterm  
227 and early term births related to a rise in obstetric interventions. Studies in Brazil [6,13,18], including  
228 São Paulo [5,15], have shown that scheduled caesarean sections, particularly in private hospitals, and  
229 induced labor early term births have contributed to shortening the length of gestation and a left shift in  
230 GA at birth. In contrast, the present study observed a right shift in the GA curve from 2015, with an  
231 increase in the proportion of births at 39 and 40 weeks and reduction in preterm and early term births.  
232 Our results also show that these changes were more pronounced for births in private hospitals. This  
233 trend may be partially attributed to a decline in obstetric interventions – such as labor induction and  
234 elective caesarean sections – particularly before 39 weeks of gestation. It is worth highlighting that the  
235 rate of increase in the proportion of births at 39 weeks was higher than the rate of fall in caesarean  
236 sections between 2012 and 2019.

237 It is reasonable to assume that factors other than the implementation of women's health policies in the  
238 1980s may have influenced the findings of the present study. In 2006, the women's organization *Rede*  
239 *Parto do Princípio* reported the abuse of caesarean delivery in the private health system to the Public  
240 Prosecutor's Office (MPF, acronym in Portuguese) [19,20]. The MPF accepted the complaint and filed  
241 a public interest civil lawsuit seeking to force the private health sector regulator, the *Agência Nacional*  
242 *de Saúde Suplementar* (ANS), to regulate the quality of obstetric services provided by the private health  
243 system [21], where caesarean section rates are particularly high, reaching 100% in some maternity units.  
244 On 6 January 2015, the ANS issued Normative Resolution 368 [22], which sets out measures to ensure  
245 that private health insurance policy-holders have access to data on caesarean section rates by healthcare

246 operator and health facility and making the use of partographs and maternity notes mandatory. In March  
247 2015, the ANS also launched the “Adequate Birth Project” [20] which promotes a set of strategies aimed  
248 at improving childbirth support to reduce caesarean section rates. In March 2016, the Federal Medical  
249 Council issued Resolution 2144 recommending that elective caesarean sections should only be  
250 performed from 39 weeks of gestation to guarantee the safety of the baby [23].

251 The combination of these factors helped draw attention to the excessive use of the caesarean section in  
252 the private sector, empowering women to make informed birth choices. Our findings show that 2015  
253 was an inflection point for caesarean section rates in SP, with an increase in the proportion of this type  
254 of birth at 39 weeks up to the end of the time series. This rise was more pronounced in private sector  
255 births.

256 Early caesarean sections without a medical reason can have adverse effects on short- and long-term  
257 maternal and infant health and well-being. At the end of pregnancy, every day counts and the more the  
258 birth is brought forward the higher the risk of infant mortality [24]. Thus, monitoring trends in GA at  
259 birth can help assess not only chances of survival but also future health. The reduction in preterm and  
260 early term births and increase in the proportion of births at later GAs is therefore good news.  
261 Nevertheless, induced labor and caesarean births remain the most common mode of delivery in SP,  
262 showing that non-evidenced based practices prevail in the country’s most populous city.

263 There is still a long way to go to improve intrapartum care in Brazil, which entails the uptake of national  
264 and international recommendations [25–27], including:

265 (1) the use of evidence-based practices, promoting a change in culture, where childbirth is not seen  
266 primarily as a high-tech medical event.

267 (2) the dissemination of an antenatal intrapartum care model involving interdisciplinary teams,  
268 including autonomous obstetric nurses and midwives for low-risk pregnancies and the active  
269 participation of women in their childbirth [28].

270 (3) the strengthening of the country's public health system, the *Sistema Único de Saúde* (SUS) or  
271 Unified Health System, and its principles and guidelines, including public participation and the  
272 dissemination of information on women’s rights.

273 (4) the transparent monitoring of data and service and professional performance indicators.

274 (5) the regulation of intrapartum care practices and price setting in the private sector to ensure good  
275 ethical standards.

276 It is hoped that the effective implementation of these recommendations will make birth safer and  
277 improve women’s satisfaction with the childbirth experience, positively influencing long-term infant  
278 outcomes. This constitutes a broad health care agenda that merits priority attention if we want to  
279 promote the health of women and the next generations.

280

## 281 **References**

- 282 1. Davidoff MJ, Dias T, Damus K, Russell R, Bettegowda VR, Dolan S, et al. Changes in the  
283 gestational age distribution among U.S. singleton births: Impact on rates of late preterm birth,  
284 1992 to 2002. *Semin Perinatol.* 2006;30: 8–15. doi:10.1053/j.semperi.2006.01.009
- 285 2. Engle WA. Morbidity and mortality in late preterm and early term newborns: A continuum. *Clin*  
286 *Perinatol.* 2011;38: 493–516. doi:10.1016/j.clp.2011.06.009
- 287 3. Spong CY. Defining “term” pregnancy: Recommendations from the defining “term” pregnancy  
288 workgroup. *JAMA - J Am Med Assoc.* 2013;309: 2445–2446. doi:10.1001/jama.2013.6235
- 289 4. Wu CS, Sun Y, Nohr EA, Olsen J. Trends in All-Cause Mortality across Gestational Age in Days  
290 for Children Born at Term. *PLoS ONE.* 2015;10: 1–11. doi:10.1371/journal.pone.0144754
- 291 5. Diniz CSG, Miranda MJD, Reis-Queiroz J, Queiroz MR. Why do women in the private sector have  
292 shorter pregnancies in Brazil? Left shift of gestational age, caesarean section and inversion of  
293 the expected disparity. *J Hum Growth Dev.* 2016;26: 33–40.
- 294 6. Leal MDC, Esteves-Pereira AP, Nakamura-Pereira M, Domingues RMSM, Dias MAB, Moreira  
295 ME, et al. Burden of early-term birth on adverse infant outcomes: A population-based cohort  
296 study in Brazil. *BMJ Open.* 2017;7: 1–11. doi:10.1136/bmjopen-2017-017789
- 297 7. Nassar N, Schiff M, Roberts CL. Trends in the Distribution of Gestational Age and Contribution  
298 of Planned Births in New South Wales, Australia. Thorne C, editor. *PLoS ONE.* 2013;8: e56238.  
299 doi:10.1371/journal.pone.0056238
- 300 8. ACOG. Committee Opinion: Definition of Term Pregnancy. *Am Coll Obstet Gynecol.* 2013.
- 301 9. Zhang T, Sidorchuk A, Sevilla-Cermeño L, Vilaplana-Pérez A, Chang Z, Larsson H, et al.  
302 Association of Cesarean Delivery With Risk of Neurodevelopmental and Psychiatric Disorders in  
303 the Offspring: A Systematic Review and Meta-analysis. *JAMA Netw Open.* 2019;2: e1910236.  
304 doi:10.1001/jamanetworkopen.2019.10236
- 305 10. Lawson GW. Naegele’s rule and the length of pregnancy – A review. *Aust N Z J Obstet Gynaecol.*  
306 2021;61: 177–182. doi:10.1111/ajo.13253
- 307 11. Torres JA, Domingues RMSM, Sandall J, Hartz Z, Gama SGND, Filha MMT, et al. Cesariana e  
308 resultados neonatais em hospitais privados no Brasil: estudo comparativo de dois diferentes

- 309 modelos de atenção perinatal. *Cad Saúde Pública*. 2014;30: S220–S231. doi:10.1590/0102-  
310 311X00129813
- 311 12. Modzelewska D, Sole-Navais P, Sandstrom A, Zhang G, Muglia LJ, Flatley C, et al. Changes in  
312 data management contribute to temporal variation in gestational duration distribution in the  
313 Swedish Medical Birth Registry. Spradley FT, editor. *PLOS ONE*. 2020;15: e0241911.  
314 doi:10.1371/journal.pone.0241911
- 315 13. Barros FC, De Lyra Rabello Neto D, Villar J, Kennedy SH, Silveira MF, Diaz-Rossello JL, et al.  
316 Caesarean sections and the prevalence of preterm and early-term births in Brazil: Secondary  
317 analyses of national birth registration. *BMJ Open*. 2018;8: 1–9. doi:10.1136/bmjopen-2018-  
318 021538
- 319 14. OMS. Declaração da OMS sobre Taxas de Cesáreas. *Hum Reprod Programme*. 2015; 1–8.  
320 Available: [http://www.who.int/about/licensing/copyright\\_form/en/index.html](http://www.who.int/about/licensing/copyright_form/en/index.html).
- 321 15. Raspantini PR, de Miranda MJ, da Silva ZP, Alencar GP, Diniz SG, de Almeida MF. The impact  
322 of the type of hospital and delivery on the gestational age in São Paulo city, 2013-2014. *Rev Bras*  
323 *Epidemiol*. 2016;19: 878–882. doi:10.1590/1980-5497201600040016
- 324 16. Antunes JLF, Cardoso MRA. Uso da análise de séries temporais em estudos epidemiológicos.  
325 *Epidemiol E Serviços Saúde*. 2015;24: 565–576. doi:10.5123/S1679-49742015000300024
- 326 17. Bonilha E de A, Vico ESR, de Freitas M, Barbuscia DM, Galleguillos TGB, Okamura MN, et al.  
327 Cobertura, completude e confiabilidade das informações do Sistema de Informações sobre  
328 Nascidos Vivos de maternidades da rede pública no município de São Paulo, 2011. *Epidemiol E*  
329 *Serv Saude Rev Sist Unico Saude Bras*. 2018;27: e201712811. doi:10.5123/s1679-  
330 49742018000100011
- 331 18. Leal M do C, Pereira APE, Domingues RMSM, Filha MMT, Dias MAB, Nakamura-Pereira M, et  
332 al. Obstetric interventions during labor and childbirth in Brazilian low-risk women. *Cad Saude*  
333 *Publica*. 2014;30: 1–16. doi:10.1590/0102-311X00151513
- 334 19. Rêgo M, Leão DC, Luiza M, Riesco G, Schneck CA, Angelo M. Reflexões sobre o excesso de  
335 cesarianas no Brasil e a autonomia das mulheres Reflections on the excessive rates of cesareans  
336 in Brazil and the empowerment of women. : 2395–2400.
- 337 20. Diniz CSG, Rattner D, D’Oliveira AFPL, de Aguiar JM, Niy DY. Disrespect and abuse in childbirth  
338 in Brazil: social activism, public policies and providers’ training. *Reprod Health Matters*. 2018;26:  
339 19–35. doi:10.1080/09688080.2018.1502019
- 340 21. Ministério Público Federal. Ação Civil Pública N. 0017488-30.2010.4.03.6100. São Paulo; 2010.  
341 Available: <http://www.mpf.mp.br>
- 342 22. Agência Nacional de Saúde Suplementar. Resolução Normativa n. 368/2015. Rio de Janeiro; 2015.
- 343 23. Conselho Federal de Medicina. Resolução CFM nº 2.284/2020. Brasília, DF; 2020.
- 344 24. Queiroz MR, Junqueira MER, Lay AAR, Bonilha EDA, Borba MF, Aly CMC, et al. Neonatal  
345 mortality by gestational age in days in infants born at term : A cohort study in Sao. *PLoS ONE*.  
346 2022;17: 1–11. doi:10.1371/journal.pone.0277833
- 347 25. WHO. WHO recommendations. Intrapartum care for a positive childbirth experience. Geneva:  
348 WHO; 2018.

- 349 26. Ministério da Saúde. Diretrizes Nacionais de Assistência ao Parto Normal: versão resumida.  
350 Brasília, DF: Ministério da Saúde; 2017.
- 351 27. Ministério da Saúde. Diretrizes de Atenção à Gestante: a operação Cesariana. Brasília. Brasília,  
352 DF: Ministério da Saúde; 2015.
- 353 28. WHO. WHO recommendations on antenatal care for a positive pregnancy experience. Geneva:  
354 WHO; 2016.
- 355



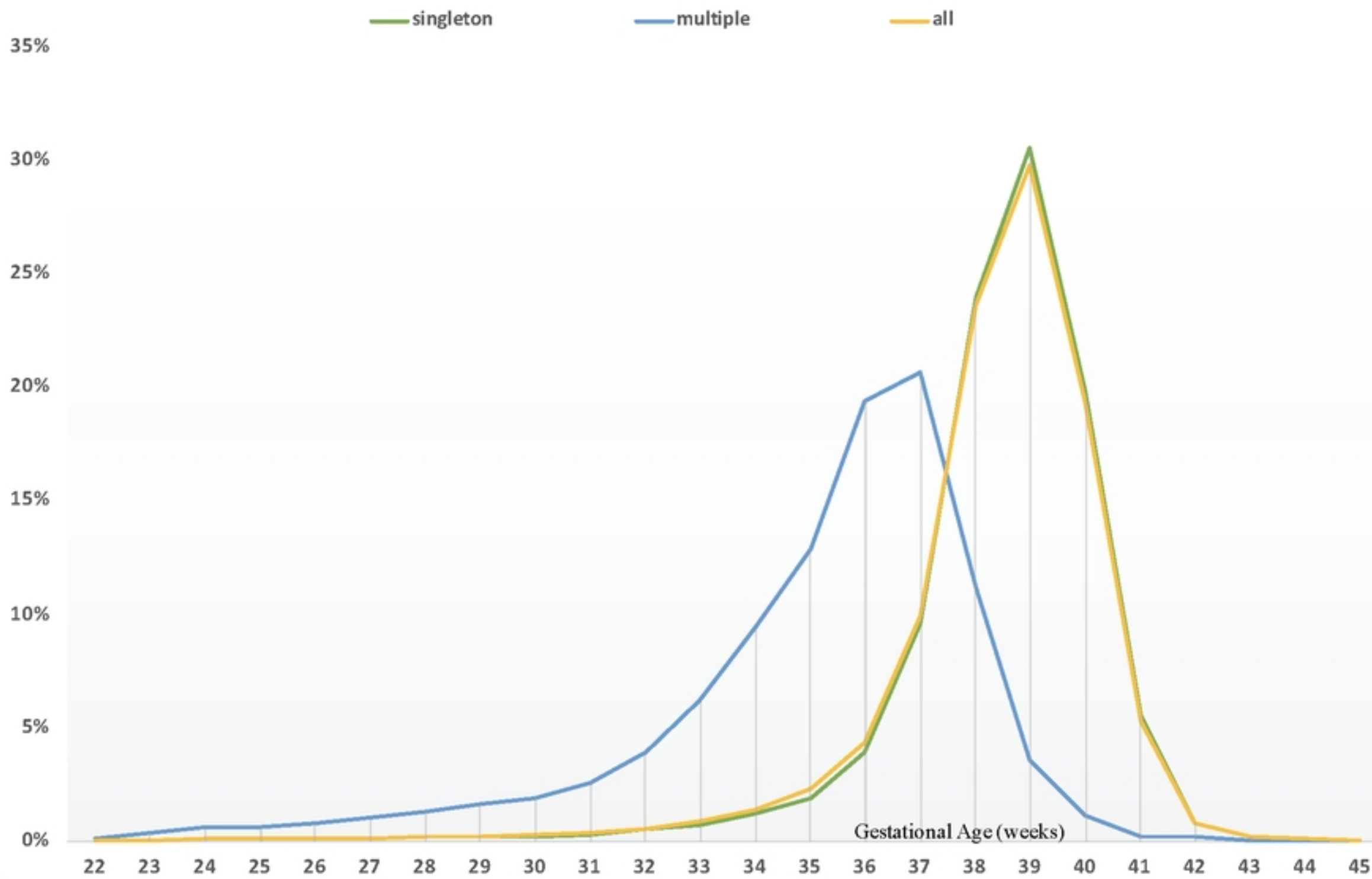


Figure 1

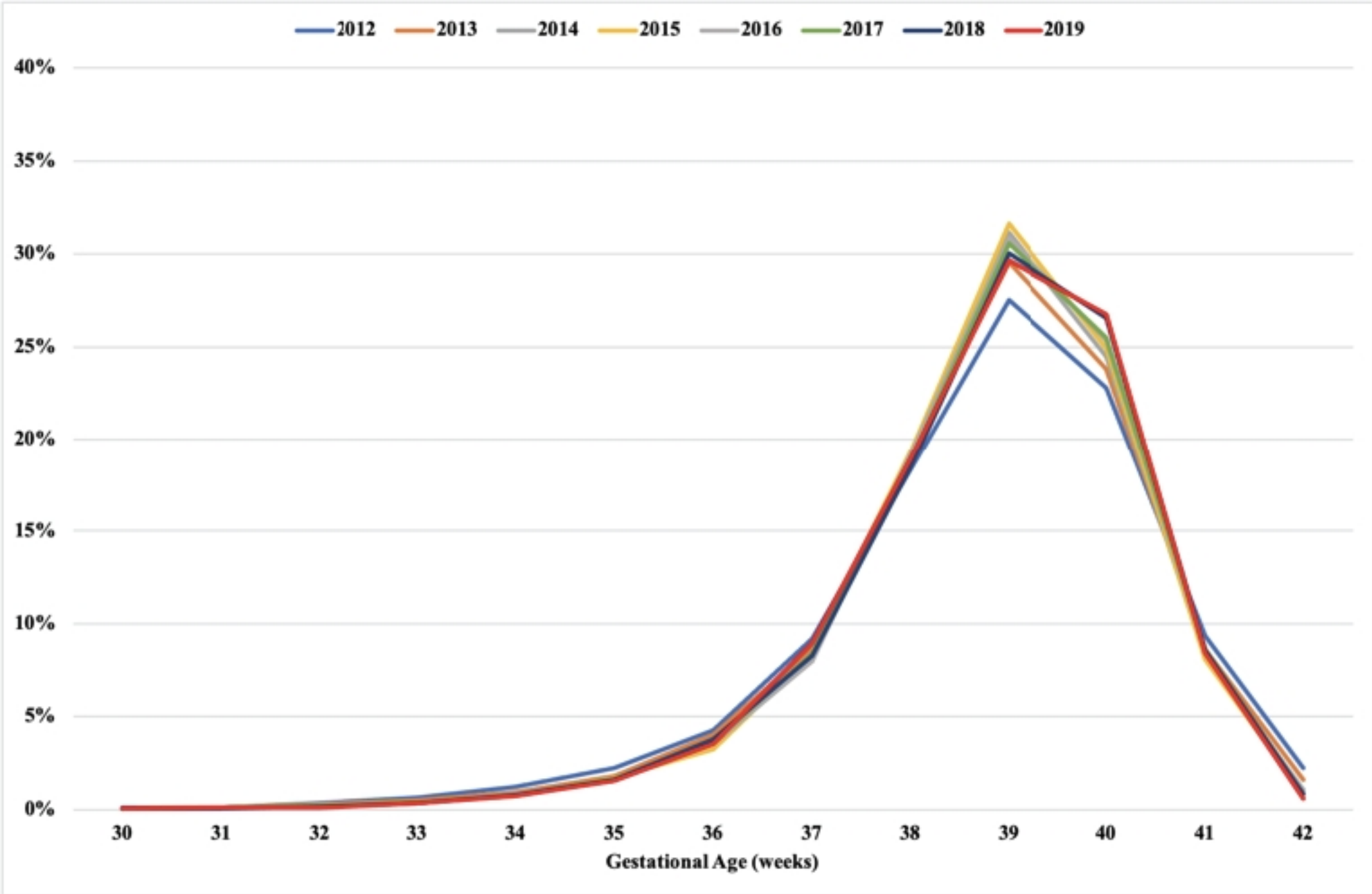


Figure 2

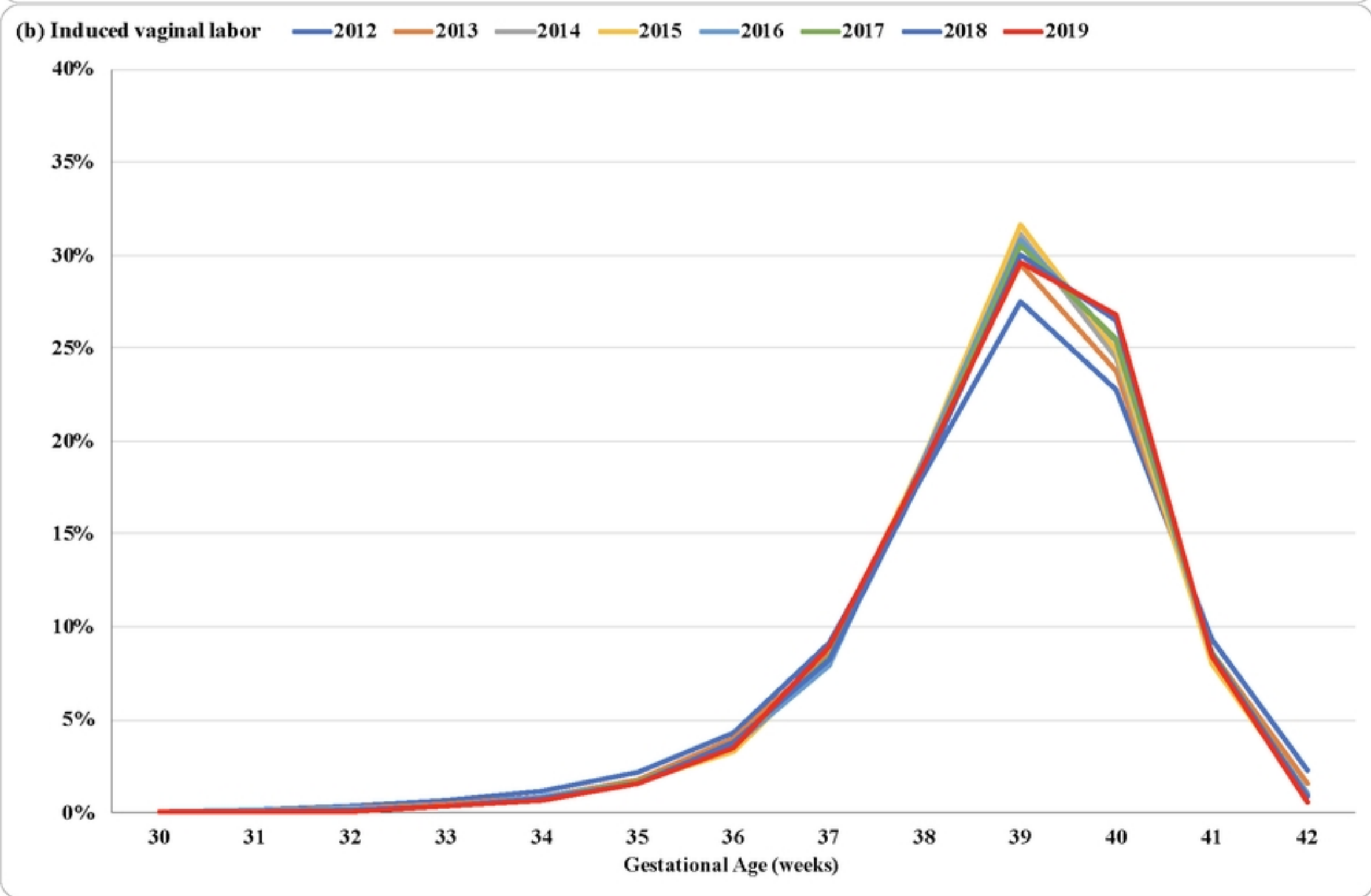
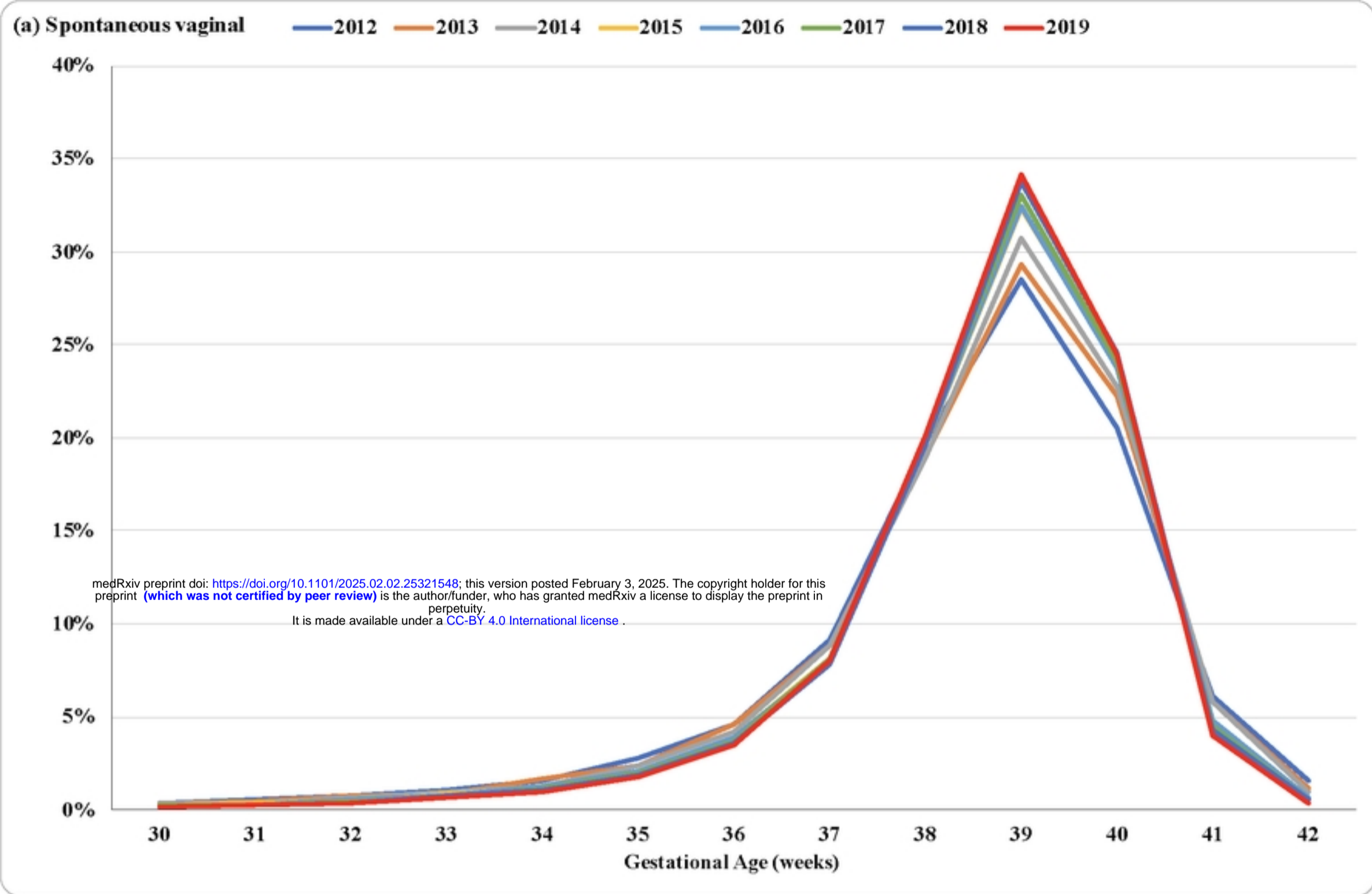


Figure 3

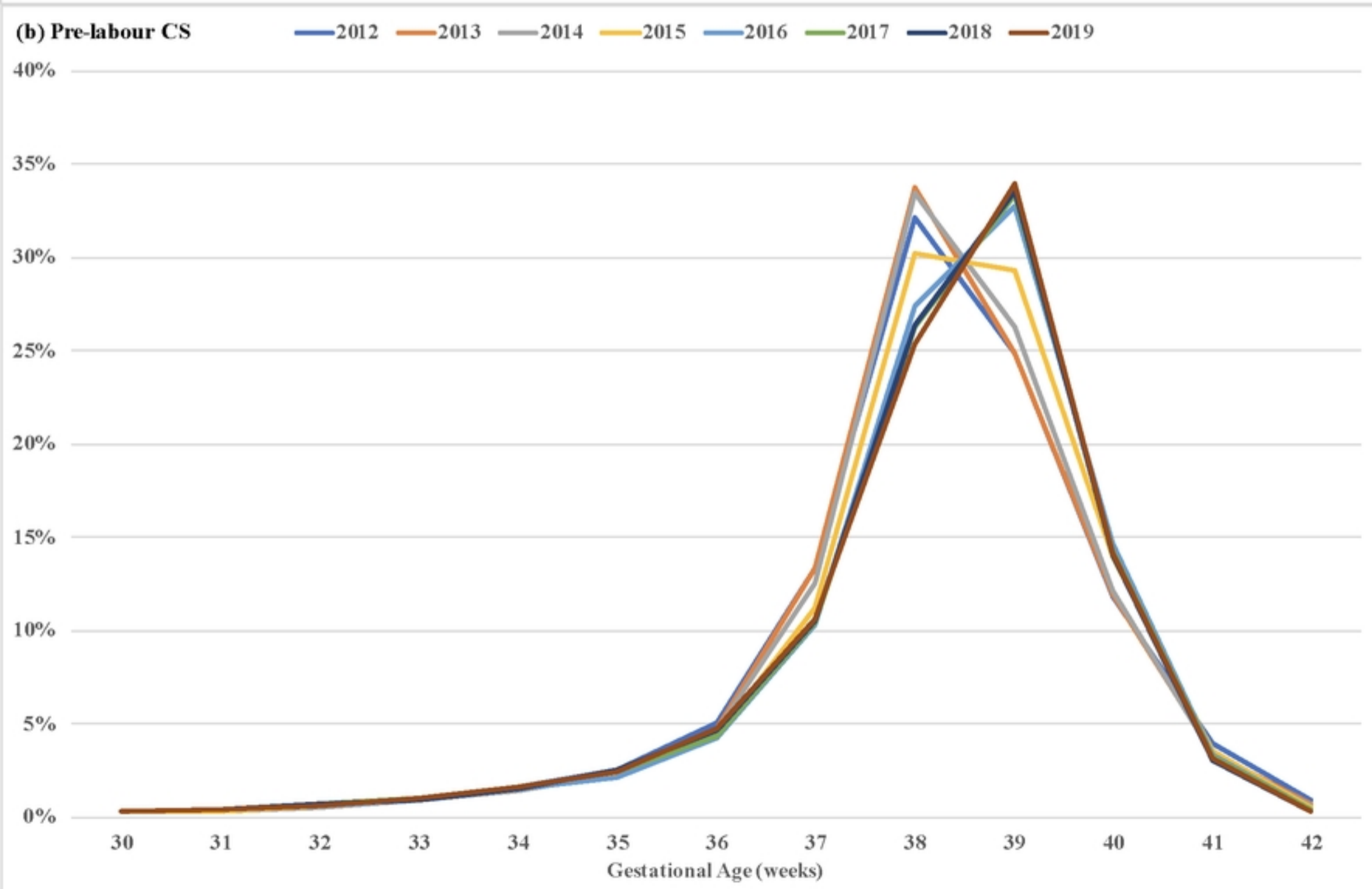
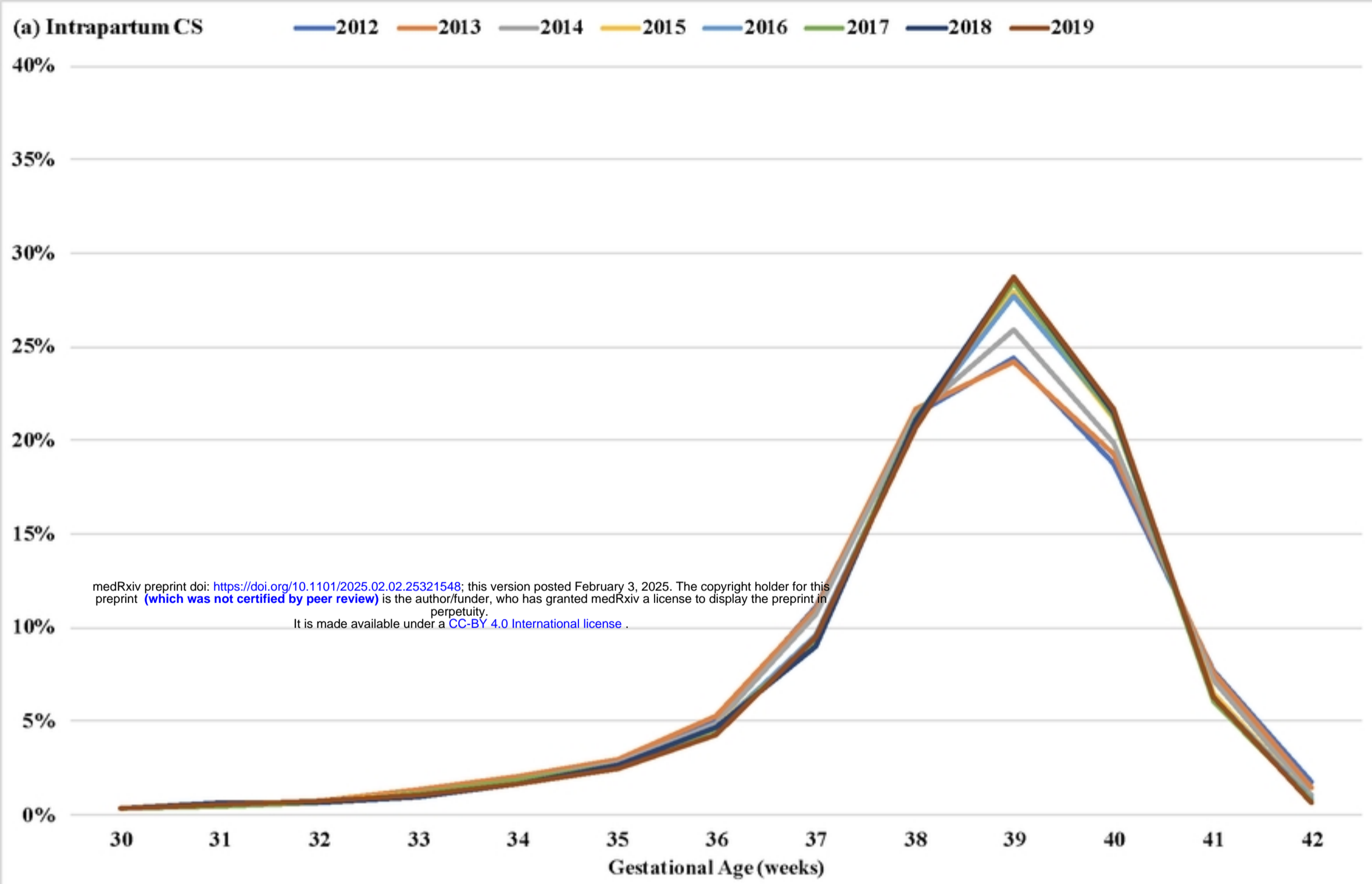


Figure 4

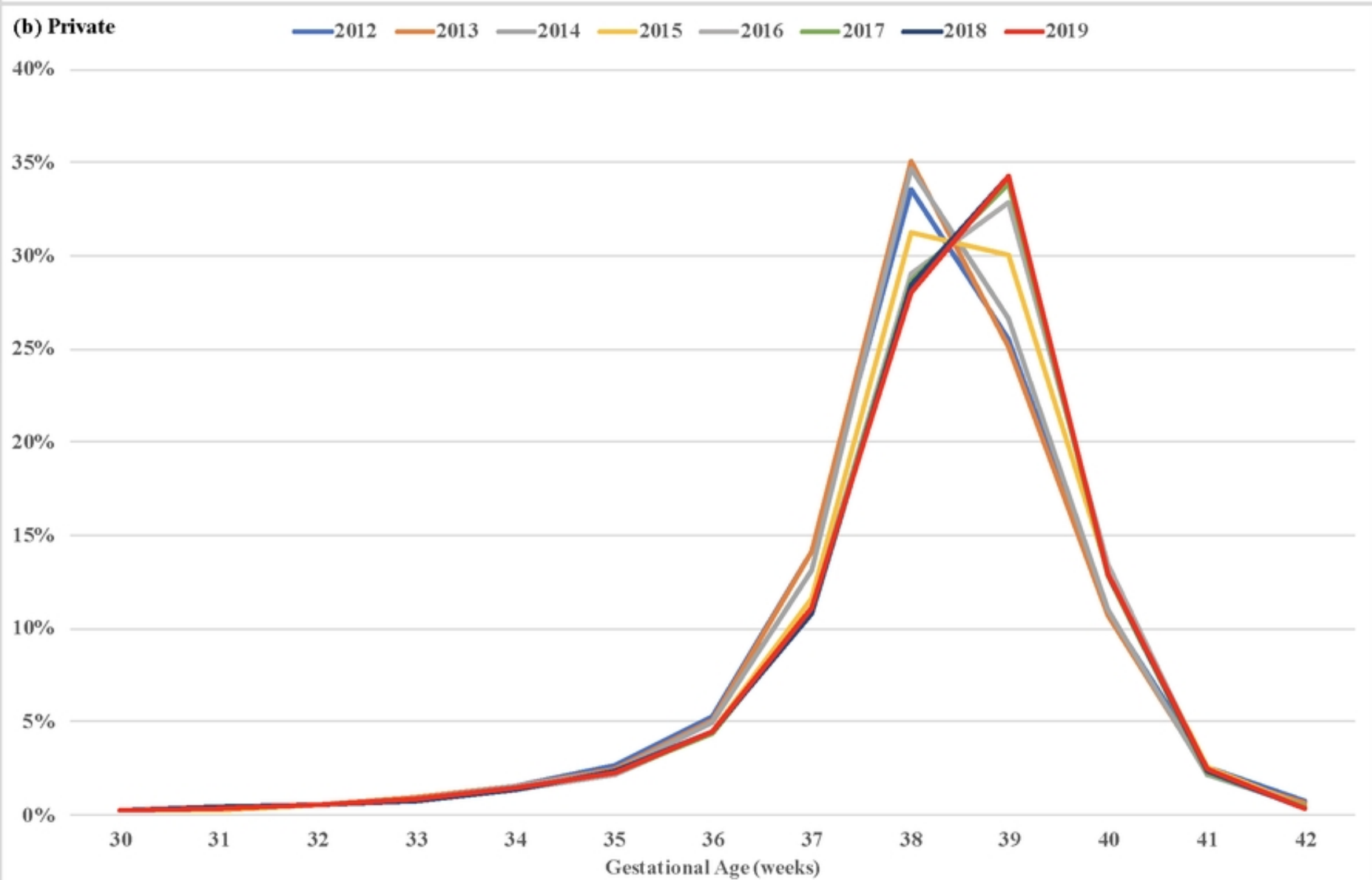
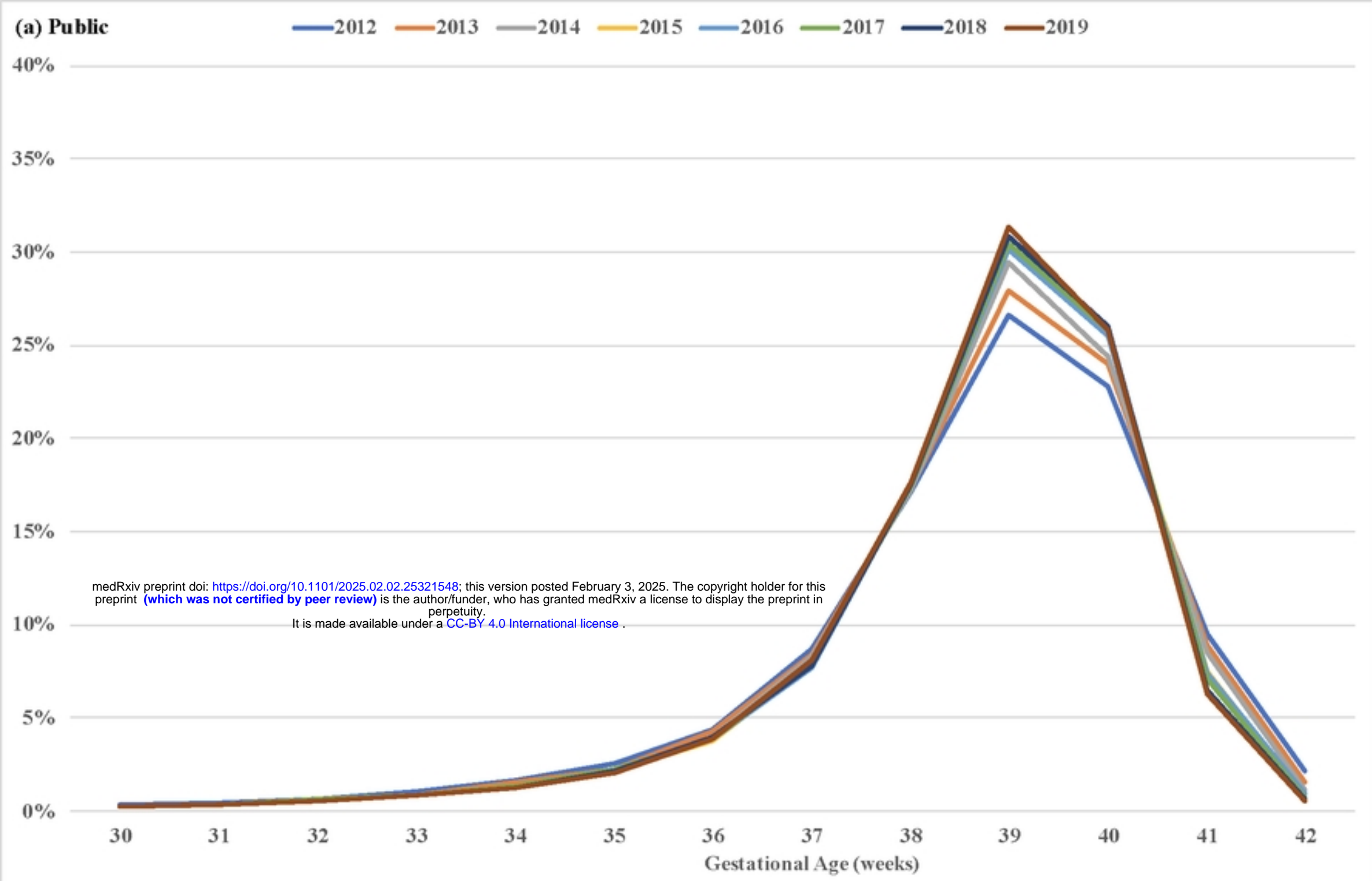


Figure 5