

1 **Diarrheal disease attributed to *Shigella* spp. and Enteroinvasive**
2 ***Escherichia coli* among children at households in rural Haïti: A case-**
3 **control study**

4
5 **Short title:** Diarrheal disease attributed to *Shigella* spp./Enteroinvasive *Escherichia coli*

6
7 **Authors**

8 Ishae Sriguha^{1,2*†}, Saradiya R Kuyt^{2†}, Youseline Cajusma², Emilee Cato², Lindsey
9 Brinkley², Md Abu Sayeed^{1,2}, Stace Maples³, Valery Madsen Beau De Rochars⁴, Daniel
10 T Leung⁵, Anthony T Maurelli¹, Chantale Baril⁶, Molly B Klarman^{1,2}, Eric J Nelson^{1,2*}

11
12 **Affiliations**

13 ¹ Department of Environmental and Global Health, University of Florida, Gainesville, FL,

14 ² Department of Pediatrics, University of Florida, Gainesville, FL

15 ³ Stanford Geospatial Center, Stanford University, Stanford, CA

16 ⁴ Department of Health Services Research, Management and Policy, University of
17 Florida, Gainesville, FL

18 ⁵ Department of Medicine, University of Utah, Salt Lake City, UT

19 ⁶ Université d'État d'Haïti- Faculté de Médecine et de Pharmacie, Port-au-Prince, Haïti

20
21 **† Co-first authors**

22
23 *** Corresponding authors**

24 Ishae Sriguha (isriguha@ufl.edu), Eric Nelson (eric.nelson@ufl.edu)

25
26
27 **Keywords:** shigella, shigellosis, EIEC, diarrhea, diarrhoea, GEMS, MAL-ED, Haïti

28
29 **Word counts:**

30 Abstract: words (280, max 250-300)

31 Author summary: 147 (max 150-200)

32 Text: 2746

33 Figures: 2

34 Tables: 3

35 Supplement: 4

1 **ABSTRACT**

2 Infections from *Shigella* spp. and Enteroinvasive *Escherichia coli* (EIEC) are considered
3 leading causes of symptomatic diarrheal disease, globally. However, there is a paucity
4 of case-control studies from Caribbean nations to guide regional public health priorities
5 and interventions. A case-control study was conducted within a larger cross-sectional
6 healthcare study in Haïti. Participant households were identified using a geospatially
7 randomized method; families with children under 5 years were consented and enrolled.
8 Rectal swabs from child participants were tested for *Shigella* spp./EIEC by qPCR using
9 the *ipaH* target. Two case-definitions were used: ‘diarrheal symptom’ (DS) cases were
10 defined as those reporting diarrheal symptoms ≤ 7 days ago; ‘acute diarrhea’ (AD) cases
11 were defined as those reporting diarrheal symptoms ≤ 7 days ago with ≥ 3 loose stools in
12 the past 24 hours and onset < 7 days ago. Of 868 households screened, 568 were
13 enrolled with 794 participating children; samples from 732 children were analyzed.
14 Rates of *Shigella* spp./EIEC. detection among DS cases and controls were 11.4%
15 (22/193) and 6.1% (33/539), respectively. Rates of detection among AD cases and
16 controls were 18.6% (8/43) and 6.8% (47/689), respectively. The adjusted odds of
17 having DS increased by 84% (aOR=1.84; 95%CI 1.02 to 3.27) and having AD increased
18 by 183% (aOR=2.83; 95%CI 1.14 to 6.36) when *Shigella* spp./EIEC was detected. The
19 attributable fractions for DS and AD were 5.62% (95%CI 0.44% to 10.9%) and 12.6%
20 (95%CI 0% to 25.3%), respectively. Rates of bloody diarrhea (dysentery) were minimal
21 ($< 1\%$, 6/732). Within this case-control study in Haïti, *Shigella* spp./EIEC detection was
22 common and attributed to symptomatic disease. These results align with prior global
23 health studies. *Shigella* spp./EIEC represent an important public health target for
24 intervention once the security situation in Haïti stabilizes.

25 **AUTHOR SUMMARY**

26 Global studies outside the Caribbean have identified a group of closely related enteric
27 pathogens (*Shigella* spp., Enteroinvasive *Escherichia coli* (EIEC)) as a leading cause of
28 diarrheal disease. This group can be associated with short-term (e.g., bloody diarrhea)
29 or long-term (e.g., malnutrition, stunting) health impacts. Within the Caribbean, there is
30 a lack of information to guide public health policy on enteric pathogens, especially in
31 Haïti. Therefore, we conducted a case-control study where we identified households
32 with children under 5 years, gathered data on diarrhea symptoms, and collected stool
33 swabs. We tested the stools using a sensitive molecular assay (*ipaH* qPCR). *Shigella*
34 spp./EIEC detection was common among both children with and without diarrhea, yet
35 more common among, and attributed to, those with symptomatic diarrheal disease.
36 These results align with prior global health studies and represent an opportunity for
37 high-impact public health action when the security situation in Haïti stabilizes.

38 INTRODUCTION

39 Diarrheal diseases are the second leading cause of death among children between one
40 month and 5 years of age worldwide with at least 1.1 billion cases and 446,000 deaths
41 annually (1). Morbidity has both acute components and more complex bi-directional
42 correlates that include malnutrition, stunting, and neuro-cognitive delay (2-5). *Shigella*
43 spp./EIEC are a group of closely related bacterial pathogens estimated to cause 111
44 million cases and 63,100 deaths annually among children under 5 years (5-8).

45 The pathophysiologic consequences of infection vary. Upon fecal-oral transmission,
46 *Shigella* spp. infection may manifest in symptomatic diarrheal disease with or without
47 blood in the stool (9). Fluid loss leading to dehydration occurs at the level of the small
48 intestine (9). Invasive disease leading to enterocolitis generally occurs at the level of the
49 large intestine in a subset of patients (10). While shigellosis can be self-limited,
50 antibiotics are indicated for severe disease and vulnerable sub-populations (11). The
51 infectious dose can be as low as 10-100 bacilli which likely contributes to large
52 outbreaks when hygiene and sanitation infrastructure are compromised (7, 12). The Pan
53 American Health Organization (PAHO) considers *Shigella* spp. to be one of the most
54 dangerous antibiotic resistant pathogens in Latin America and the Caribbean, exhibiting
55 increased rates of resistance to antibiotics such as ciprofloxacin and azithromycin (4,
56 13, 14).

57 A landmark multisite case-control study ('GEMS') found that *Shigella* spp./EIEC were
58 the leading enteric pathogens detected. The GEMS study found the attributable fraction
59 for *Shigella* spp./EIEC to range from 3.9% to 83.2% depending on age stratum and
60 study site (15). *Shigella* spp./EIEC was the most attributable or one of the most

61 attributable pathogens in infants, toddlers, and older children (15). A second landmark
62 multisite birth cohort study ('MAL-ED'), among children ≤ 2 years with and without
63 diarrheal disease who were not seeking care, found an attributable fraction of 10.2% for
64 *Shigella* spp./EIEC (16). While both were global in reach, there was only a single site in
65 Latin America (Peru), and there remains a paucity of insight from case-control studies
66 from the Caribbean, including Haïti, to set regional public health priorities.

67 The taxonomy of this group of pathogens is complicated because approaches were
68 established in the pre-genomics era. Phylogenetics revealed *Shigella* spp. and EIEC
69 are closely related (17). *Shigella* spp. are Gram-negative, nonmotile, facultatively
70 anaerobic, non-spore-forming, rod-shaped bacteria (18). They are differentiated from
71 *Escherichia coli* by pathophysiology and metabolism (e.g., inability to ferment lactose)
72 (18). The *Shigella* genus is divided into four serogroups with multiple serotypes: A (*S.*
73 *dysenteriae*, 12 serotypes); B (*S. flexneri*, 6 serotypes); C (*S. boydii*, 18 serotypes); and
74 D (*S. sonnei*, 1 serotype); these pathogens can readily be detected by PCR/qPCR using
75 primers for the invasion plasmid antigen H gene (*ipaH*) (9, 19). Given that *ipaH* is also
76 found among Enteroinvasive *Escherichia coli* (EIEC) it is difficult to disaggregate these
77 pathogens without cost-prohibitive molecular and culture analyses (19). Both the GEMS
78 and MAL-ED studies chose to treat *ipaH* positive samples as a singleton entity when
79 assessing attributions to symptomatic infection.

80 We hypothesized that among children in Haïti, *Shigella* spp./EIEC would be detected at
81 rates similar to the GEMS and MAL-ED studies and the odds of *Shigella* spp./EIEC
82 detection would be higher among, and attributed more often to, those with diarrheal
83 disease. To test these hypotheses, we conducted a case-control study among children

84 at the household level who were enrolled within a larger cross-sectional study in Haïti, a
85 setting with progressively deteriorating public health infrastructure, security and
86 governance (20). Despite limited data at the household level, diarrheal diseases have
87 been studied among care seeking children in Haïti (21-23). In 2012, *Shigella* spp. were
88 detected in 21.5% and 18.2% of children under 5 years presenting at a cholera
89 treatment center and an oral rehydration point in Port au Prince, respectively (23). Our
90 findings were consistent with our guiding hypothesis and aligned well with both the
91 GEMS and MAL-ED studies (15, 16).

92 **METHODS**

93 **Ethics statement.** Ethical approvals were obtained from the Institutional Review Board
94 at the University of Florida (IRB201703246) and the Comité National de Bioéthique
95 (National Bioethics Committee of Haïti, Ref:1718-35).

96 **Study population and setting.** A case-control study was conducted within a larger
97 cross-sectional study investigating healthcare-seeking intention and behavior in Haïti
98 (20). The study population resides within a deteriorating healthcare infrastructure due to
99 socio-political unrest (24). The under-five mortality rate is approximately 56 deaths per
100 1000 live births and the stunting rate is 20% (25). In 2023, rates of vaccination of 12
101 vaccines in the WHO/UNICEF schedule ranged from only 41-75%, with some vaccine
102 coverage lower than in 2013, possibly due to the state of unrest (26). Participant
103 households were located in the communes of Gressier and Leogane Haïti (located 12
104 and 27 miles respectively southwest of the capital Port-au-Prince). The enrollment
105 strategy aimed to equitably enroll families across rural, peri-urban and urban areas. The
106 study area (477 km²) was divided into grid cells two square kilometers in size and each

107 cell was classified by density; “low” (0-112 structures), “medium” (113-397 structures),
108 or “high” (398-4664 structures). Six grid cells of each density were randomly selected
109 for sampling. Each of the selected grid cells was divided into 18, 24, or 53 Thiessen
110 polygons based on their designation as low, medium, or high density, respectively. The
111 study team navigated to a targeted polygon and screened the first house they
112 encountered. This process was repeated until at least one house in each polygon was
113 enrolled or all households were screened. Enrollment criteria included a head of
114 household who consented to complete a household survey and had at least one child
115 under five years old for whom consent was obtained to collect a stool swab. The
116 surveys were conducted to ascertain the socioeconomic status of families and the
117 recent diarrhea history of child participants. Although not part of the criteria, participants
118 were not actively seeking care at the time of enrollment.

119 **Clinical procedures.** Anthropomorphic measurements were obtained including height,
120 weight, and mean upper arm circumference (MUAC). Temperature was measured and
121 dehydration status was assessed using WHO IMCI methods for children reporting
122 current fever or diarrhea symptoms, respectively (27).

123 **Laboratory procedures**

124 *Sample collection.* Stool samples were obtained via rectal swabs, immediately placed
125 on ice in transport tubes with 3 mL of normal saline and brought to a laboratory in
126 Gressier. The contents of the transport tubes were divided into two 2 mL tubes and
127 stored at -80°C. Samples were transported on dry ice to the Emerging Pathogens
128 Institute at University of Florida for analysis.

129 *Molecular assays.* Standard methods for nucleic acid extraction were performed (28,
130 29). NEB Luna Universal qPCR Master Mix, nuclease free water, and primers (*ipaH* or
131 16S) were combined as a master mix. The *ipaH* primer was chosen for the detection of
132 *Shigella* spp./EIEC and the 16S primer was used as a *eubacteria* control (30, 31). Each
133 well of a Hard-Shell® 96-Well PCR plate was loaded with 20 µL of master mix along
134 with either 1 µL of sample or 1 µL of control. The plates were set onto a thermocycler
135 (Bio Rad CFX96 Touch Real-Time PCR Detection System) to denature at 95°C for one
136 minute, then 35 cycles of denaturing at 95°C for 15 seconds, and annealing and
137 extension at 60°C for 30 seconds. Two operators conducted two biological replicates for
138 each of nine 96-well plates and switched between two thermocycler machines (except
139 for plate 2) to control for machine or operator bias. One positive control of *Shigella* spp.
140 genomic DNA and two negative controls of nuclease-free water were included on each
141 plate.

142 **Analytic strategy**

143 *Definitions.* Two definitions for cases and controls were established based on survey
144 responses to questions about history of diarrheal symptoms (Fig S1). Cases for
145 ‘diarrheal symptoms’ (DS) were defined as answering ‘YES’ to the question “Diarrheal
146 symptoms within the last 7 days?”. Controls for ‘diarrheal symptoms’ were defined as
147 answering ‘NO’ to the same question. Cases for ‘acute diarrhea’ (AD) were defined as
148 answering ‘YES’ to the previous question as well as the questions “Three or more loose
149 stools in the past 24 hours?” and “Onset less than 7 days ago?”. Controls for ‘acute
150 diarrhea’ were defined as answering ‘NO’ to any or all of the three previous questions.

151 *Analysis of molecular data.* Results from the qPCR reactions were analyzed
152 quantitatively and qualitatively. Blank readings indicative of no detection of *ipaH* were
153 set to the maximum possible Ct value of 35. Qualitatively, samples were ruled positive if
154 the *ipaH* Ct was less than 28 and the 16S Ct value was less than 26. The *ipaH*
155 threshold was based on standard curves and positive/negative controls; the 16S
156 threshold was based on distributions among experimental samples and
157 positive/negative controls. Samples negative for 16S were excluded from further
158 analysis.

159 *Statistical analysis.* A socio-economic status (SES) index was previously generated
160 using components from the household survey (20). Data were described by proportions
161 for categorical variables and medians with interquartile ranges for continuous variables.
162 Characteristics of cases were compared to controls within each case definition using the
163 two-sided non-paired Mann-Whitney U test, Chi-square test for independence, and
164 Fisher's exact test. For the primary analysis, an odds ratio was used to compare odds of
165 *Shigella* spp./EIEC detection among cases and controls for both DS and AD case
166 definitions. Additionally, adjusted odds ratios were calculated to account for age, sex,
167 and socioeconomic status. Attributable fractions were calculated with the graphPAF
168 package in R using the Bruzzi formula with 1,000 bootstrap replications (32, 33). A two-
169 sided non-paired Mann-Whitney U test was used to compare differences in Ct values
170 between cases and controls for each definition for all samples and only *ipaH* positive
171 samples. All analyses were performed using R Statistical Software (v4.4.1) (34, 35).
172 Figures were created using R Statistical Software (v4.4.1) and GraphPad Prism
173 (v10.4.1) (34, 36).

174 RESULTS

175 **Participant characteristics.** Of the 868 households screened, 568 were enrolled with
176 794 children. Among the enrolled children, 732 met inclusion criteria for the case-control
177 analysis (Fig 1). Over half of the participants were between 24-59 months (57%, n=416)
178 and the median age was 26 months (IQR 12-42 months) (Tables 1 and 2). Participation
179 by sex was approximately equal (51%, n=372 female). The median MUAC was 146 mm
180 (IQR 139-155 mm) and based on these measurements 1% (n=5) were severely
181 malnourished (Fig 2) (37). The majority of both male and female participants were within
182 3 z-scores of their age-specific median weight (98%, 708; Fig S2) and median height
183 (93%, 681; Fig S3) (38). Approximately 10% (n=71) of participants reported a current
184 fever, 1% (n=6) reported blood in stool and none of the participants with acute diarrhea
185 (0/43) were dehydrated (Table 3).

186 **Characteristics of cases and controls.** One quarter of participants (n=193) fit the
187 case definition for 'diarrheal symptoms' (Table 1) and 6% (n=43) fit the more restrictive
188 case definition for 'acute diarrhea' (Table 2). The DS and AD cases were slightly
189 younger than the respective DS ($P<.001$) and AD ($P=.022$) controls and had slightly
190 lower MUAC measurements than the respective DS ($P=<.001$) and AD ($P=.010$)
191 controls. The proportion of cases who were female was similar to that of controls for
192 both case definitions. There was no significant difference between cases and controls in
193 the proportions of underweight or severely malnourished participants for either DS or
194 AD case definitions. The SES distribution of DS and AD cases was not significantly
195 different than their corresponding DS and AD controls.

196 **Pathogen detection.** The overall rate of *ipaH* detection was 7.5% (n=55). Among the
197 DS cases, 22 (11.4%) were *ipaH* positive, representing an increased odds of 97%
198 (OR=1.97; 95%CI 1.11 to 3.46) for detection among participants with diarrheal disease
199 (Table 1). Among the AD cases, 8 (5.9%) were *ipaH* positive, representing an increased
200 odds of 212% (OR=3.12; 95% CI 1.29 to 6.81) for detection among participants with
201 diarrheal disease (Table 2). When controlling for age, sex, and SES, detection of *ipaH*
202 was associated with an increased odds of diarrheal disease for both case definitions;
203 DS (aOR=1.84; 95% CI 1.02 to 3.27) and AD (aOR=2.83; 95% CI 1.14 to 6.36). Among
204 participants with positive *ipaH* Ct values, the median value for DS cases (25.9; IQR
205 22.4-26.8) compared to DS controls (24.6; IQR 22.3-26.5) was not statistically different
206 (p=0.23). The median *ipaH* Ct value among AD cases (26.4; IQR 24.3-26.9; p=.03)
207 compared to AD controls (24.6; IQR 21.3-26.6) was slightly higher (p=0.03; Fig S4). The
208 unadjusted attributable fractions of *Shigella* spp./EIEC for diarrheal disease were 5.62%
209 (95% CI 0.44% to 10.9%) for DS and 12.6% (95% CI 0% to 25.3%) for AD. After
210 adjusting for confounders, the attributable fractions of *Shigella* spp./EIEC to diarrheal
211 disease were 5.2% (95% CI 0% to 10.5%) for DS and 12.0% (95% CI 0% to 24.8%) for
212 AD.

213 **DISCUSSION**

214 In this case-control study, detection of *Shigella* spp./EIEC was common and attributed
215 to diarrhea symptoms among children under five years of age in the Caribbean nation of
216 Haïti. Participants with *Shigella* spp./EIEC were twice as likely to report diarrheal
217 symptoms (DS) within the seven-day period prior to rectal swab collection. Among
218 participants meeting the more stringent acute diarrheal (AD) disease definition, the odds

219 of having AD increased to three times as likely. When adjusting for the potential
220 confounding variables of sex, age category, and SES, similar findings were made.
221 Attributable fractions of *Shigella* spp./EIEC detection and symptomatic disease were
222 more similar to the MAL-ED study than GEMS (15, 16). The GEMS study, stratified by
223 age, found that *Shigella* spp./EIEC were the attributable pathogen in 3.9% to 15.8% of
224 cases in infants, 15.4% to 64.9% of cases in toddlers, and 17.8% to 83.2% in older
225 children across all sites (15). The difference in proportions compared to our findings
226 may be due to differences in participant inclusion criteria, as those included in the
227 GEMS study were actively seeking care (15). The MAL-ED study, while focusing on
228 children under 2 years of age, included participants at the household level not actively
229 seeking care. Our attributable fraction of 12.9% is close to their findings of 10.2% of
230 cases that were attributed to *Shigella* spp./EIEC.

231 This study found negligible qPCR differences (<1 Ct) between cases and controls
232 for both DS and AD definitions. This contrasts with the MAL-ED study that found
233 participants with diarrhea attributed to *Shigella* spp./EIEC had lower Ct values (higher
234 abundance) compared to controls as would be expected (15, 16, 39, 40). There are
235 multiple explanations for our findings including study design (e.g., lower sample size),
236 procedure (e.g. possible differences in extraction efficiencies) and biological variation
237 (possible differences in target copy number between cases and controls). Importantly,
238 our attributable fractions for *Shigella* spp./EIEC align well with the attributable fraction
239 found in the MAL-ED study for diarrheal disease. Lastly, our study had low rates of
240 reported blood in stool overall (< 1%). Whereas, in MAL-ED, 4.7% of participants with
241 *Shigella*-specific diarrhea reported blood in stool (16). An underlying pathophysiologic

242 explanation for this difference is unknown and would require additional laboratory
243 studies to assess differences in underlying gut health between the two populations.

244 Our findings should be considered within the context of the study limitations.

245 First, enrollment bias may have been present in the larger public health study (20)

246 because recruitment occurred Monday to Friday during daytime hours when potentially

247 eligible head of households and school aged children were likely outside of the home.

248 Second, the case definitions for DS and AD relied on survey responses, which are not

249 as accurate as data ascertained clinically. Third, there was a procedural delay of

250 approximately five years between sample collection and analysis which poses a risk of

251 sample degradation. To minimize this, 16S primers were used as a control to confirm

252 that expected rates of total bacteria were present in the stool sample and all 16S

253 negative samples were excluded. Further, the *ipaH* gene is present in both *Shigella* spp.

254 and EIEC.(41) While EIEC infection is uncommon (42, 43), especially compared to

255 other diarrheagenic pathogens including other *E. coli* pathogens and *Shigella* spp., they

256 cannot be differentiated from *Shigella* spp. without further analysis (44). Serotyping can

257 differentiate *Shigella* spp. from EIEC, however, antibodies to O antigens of *Shigella* spp.

258 have cross-reactivity with EIEC O antigens (45, 46).

259 **CONCLUSION**

260 Despite study limitations, *Shigella* spp./EIEC detection was common and associated

261 with symptomatic disease among participants within the community. The results indicate

262 the need for monitoring and control of *Shigella* spp./EIEC infections in Haïti as an

263 etiological agent for diarrheal disease among children under five years. Intervention

- 264 would reduce rates of acute disease as well as reduce nutritional and development
- 265 sequelae associated with *Shigella* spp./EIEC.

266 **Acknowledgements:** We thank the participants for joining in this study as well as the
267 clinical and laboratory teams who collected and analyzed the samples. We are grateful
268 to those who collaborated on the original clinical study in which the samples analyzed
269 herein were collected. We are also grateful to R. Autrey, B. Johnson and K. Berquist for
270 their administrative expertise at the University of Florida. We also thank Dr. James
271 Platts-Mills for his guidance on computing attributable fractions. EJN was the PI and
272 obtained IRB approval at the University of Florida. Associated protocol
273 numbers/registrations are: University of Florida IRB 201703246 and the Comité National
274 de Bioéthique (National Bioethics Committee of Haïti) Ref:1718-35. This collective
275 research infrastructure and support was invaluable to the success of this study.

276 **Funding:** This work was supported by the National Institutes of Health [DP5OD019893]
277 to EJN and [R01 AI135115] to DTL as well as the Children's Miracle Network. The
278 funders had no role in study design, data collection and analysis, decision to publish, or
279 preparation of the manuscript.

280 Conceptualization: MAS, DTL, ATM, CB, MBK, EJN

281 Methodology: IS, SRK, EC, YC, LB, MAS, DTL, SM, ATM, MBK, EJN

282 Investigation: IS, SRK, YC, EC, LB, CB, MBK, EJN

283 Visualization: IS, SRK, MK, EJN

284 Funding acquisition: DTL, EJN

285 Project administration: YC, MBK, EJN

286 Supervision: YC, MAS, VBR, CB, MBK, EJN

287 Formal analysis: IS, MBK, EJN

288 Resources: MAS, VBR, DTL, ATM, EJN

289 Data Curation: IS, SRK, YC, EC, LB, MBK

290 Writing – original draft: IS, SRK, MBK, EJN

291 Writing – review & editing: YC, EC, LB, MAS, SM, VBR, DTL, ATM, CB, EJN

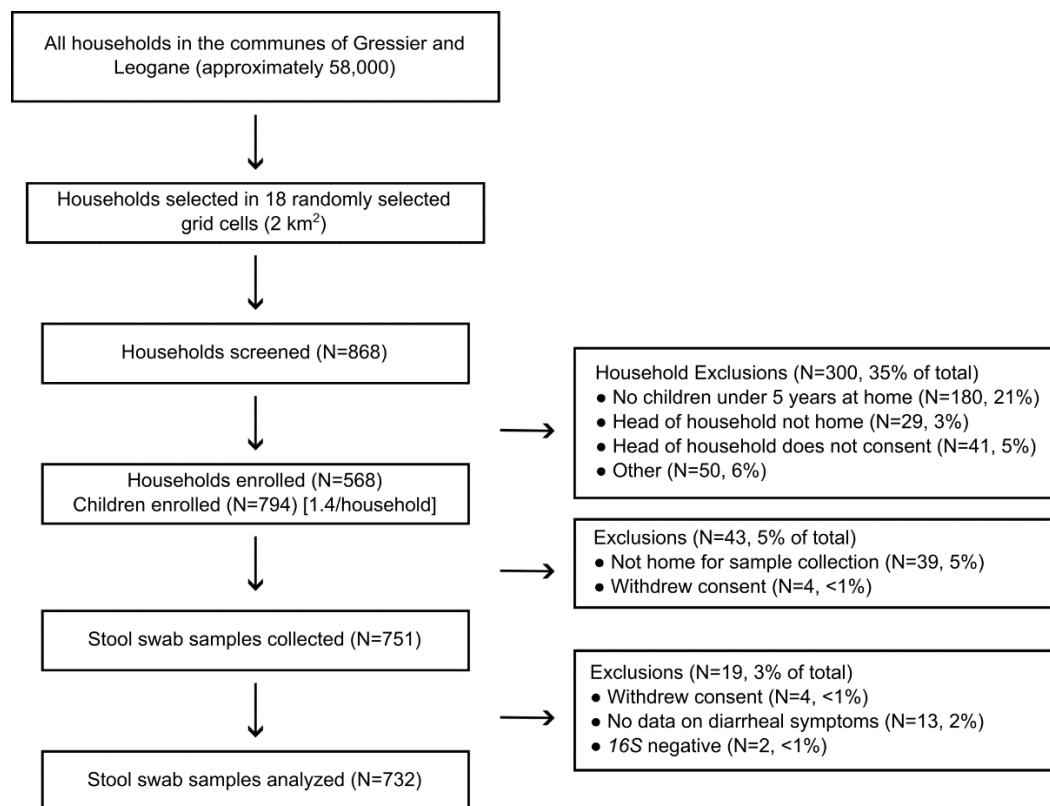
292 **Competing interests:** Authors declare that they have no competing interests.

293 **Data and materials availability:** All data produced in the present study are available
294 upon reasonable request to the authors.

295 **Code availability:** The computer code to reproduce data analyses is available upon
296 request.

297 **FIGURE 1**

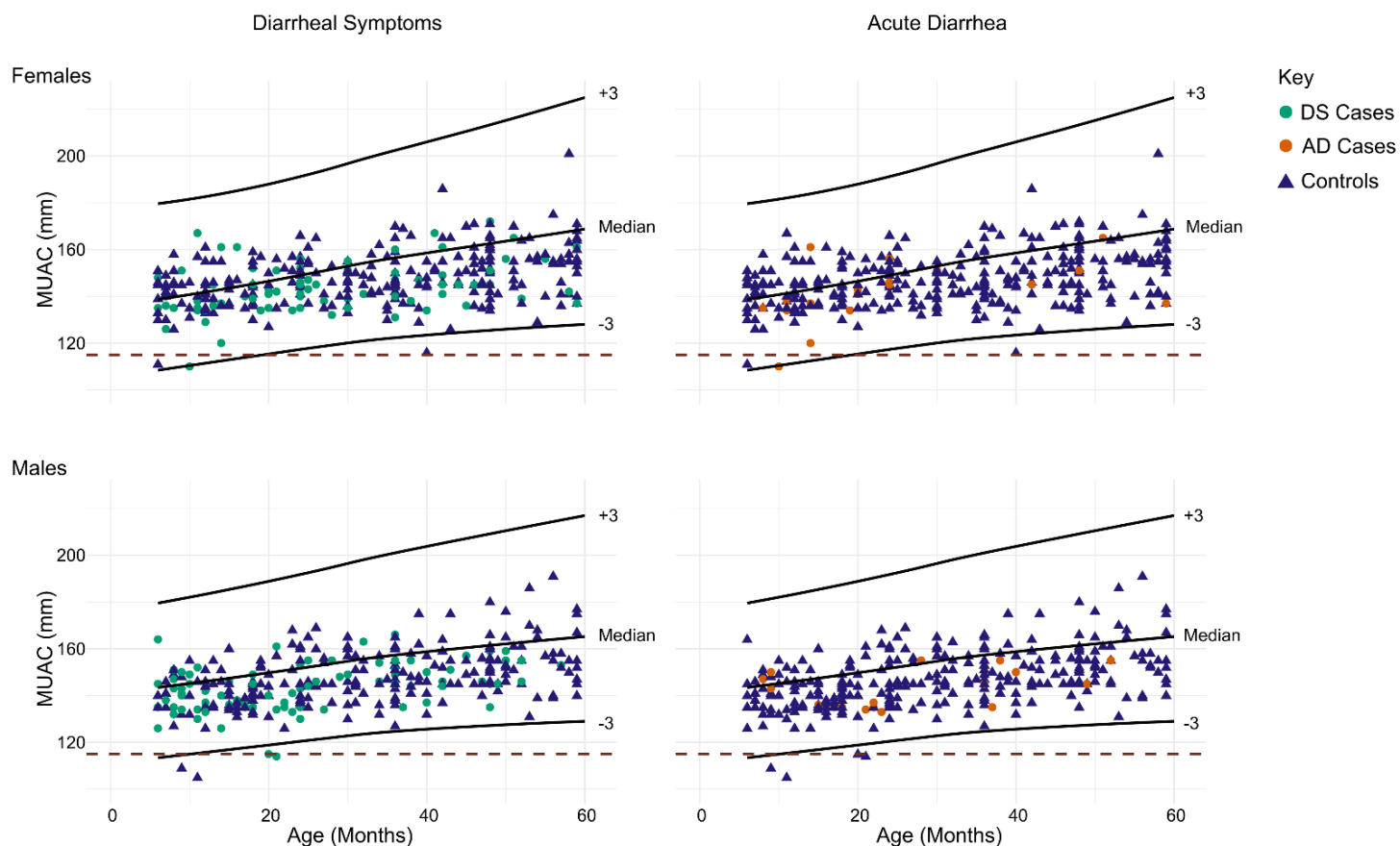
298



300 **Fig 1. Participant enrollment and exclusions.**

1 **FIGURE 2**

2



3

4 **Fig 2. Sex- specific MUAC measurements and Z-scores for all participants as well as stratifications**
5 **for DS and AD case definitions.** A MUAC <115 mm is considered severely malnourished. DS=Diarrheal
6 symptoms; answered 'YES' to "diarrheal symptoms within the last 7 days". AD=Acute diarrhea; answered
7 'YES' "diarrheal symptoms within the last 7 days", and "three or more loose stools in the past 24 hours",
8 and "onset less than 7 days ago". MUAC=mid-upper arm circumference.

9 TABLE 1

10 Table 1. Identification of factors associated with diarrhea symptoms (DS)

	Cases	Controls	OR ^a (95% CI)	P	aOR ^b (95% CI)	P
Diarrheal symptoms (DS)^c	193 (26%)	539 (74%)				
<i>ipaH</i> positive	22 (11%)	33 (6%)	1.973 (1.106-3.457)	0.019	1.838 (1.017-3.265)	0.040
Age; median months (IQR)^d	21 (10–36)	30 (14.5-46)	0.976 (0.966-0.986)	<0.001	-	-
Age						
0-11 months	59 (31%)	103 (19%)	REF	REF	REF	REF
12-23 months	49 (25%)	105 (20%)	0.815 (0.510-1.300)	0.390	0.844 (0.523-1.358)	0.485
24-59 months	85 (44%)	331 (61%)	0.448 (0.301-0.669)	<0.001	0.456 (0.305-0.683)	<0.001
Sex; Female	90 (47%)	282 (52%)	0.796 (0.572-1.107)	0.175	0.830 (0.591-1.163)	0.278
SES^e Index						
1st quintile	41 (21%)	99 (18%)	REF	REF	REF	REF
2nd quintile	36 (19%)	117 (22%)	0.743 (0.440-1.251)	0.264	0.793 (0.464-1.35)	0.395
3rd quintile	43 (22%)	101 (19%)	1.028 (0.617-1.714)	0.915	1.120 (0.663-1.896)	0.672
4th quintile	40 (21%)	108 (20%)	0.894 (0.534-1.496)	0.670	0.907 (0.535-1.535)	0.715
5th quintile	33 (17%)	114 (21%)	0.699 (0.409-1.187)	0.187	0.680 (0.392-1.170)	0.164
MUAC (IQR)	143 (135-150)	146 (141-155)	0.967 (0.952-0.981)	<0.001	-	-

11 ^a OR=odds ratio.12 ^b aOR= adjusted odds ratio. Age (Continuous) and MUAC were not accounted for when computing the adjusted odds ratios.13 ^c DS=Diarrheal symptoms; answered 'YES' to "diarrheal symptoms within the last 7 days".14 ^d IQR=Inter quartile range.15 ^e SES=Socioeconomic status. See methods for components of the index.

16 **TABLE 2**

17

18 **Table 2. Identification of factors associated with acute diarrhea (AD)**

	Cases	Controls	OR ^a (95% CI)	P	aOR ^b (95% CI)	P
Acute diarrhea (AD)^c	43 (6%)	689 (94%)				
<i>ipaH</i> positive	8 (19%)	47 (7%)	3.122 (1.286-6.813)	0.007	2.832 (1.140-6.400)	0.016
Age; median months (IQR)^d	20 (9.5-29)	27 (13-43)	0.977 (0.958-0.996)	0.019	-	-
Age						
0-11 months	14 (33%)	148 (22%)	REF	REF	REF	REF
12-23 months	14 (33%)	140 (20%)	1.057 (0.483-2.314)	0.888	1.050 (0.467-2.360)	0.905
24-59 months	15 (35%)	401 (58%)	0.395 (0.185-0.848)	0.016	0.412 (0.192-0.892)	0.023
Sex; Female	19 (44%)	353 (51%)	0.753 (0.401-1.397)	0.371	0.826 (0.433-1.558)	0.555
SES^e index						
1st quintile	11 (26%)	129 (19%)	REF	REF	REF	REF
2nd quintile	8 (19%)	145 (21%)	0.647 (0.244-1.648)	0.365	0.744 (0.275-1.940)	0.547
3rd quintile	10 (23%)	134 (19%)	0.875 (0.353-2.144)	0.769	1.040 (0.409-2.629)	0.934
4th quintile	4 (9%)	144 (21%)	0.326 (0.089-0.979)	0.060	0.335 (0.090-1.025)	0.070
5th quintile	10 (23%)	137 (20%)	0.856 (0.346-2.097)	0.732	0.841 (0.331-2.115)	0.711
MUAC	142 (135-150)	146 (140-155)	0.967 (0.941-0.993)	0.015	-	-

19 ^a OR=odds ratio.20 ^b aOR= adjusted odds ratio.21 ^c AD=Acute diarrhea; answered 'YES' "Diarrheal symptoms within the last 7 days", and "Three or more loose stools in the past 24 hours", and "Onset less than 7
22 days ago".23 ^d IQR=Inter quartile range.24 ^e SES=Socioeconomic status. See methods for components of the index.

25 Age (Continuous) and MUAC were not accounted for when computing the adjusted odds ratios.

1 **TABLE 3**

2
3
4
5
6
7

Table 3. Report of fever or blood in stool stratified by diarrheal symptom (DS) and acute diarrhea (AD) case definitions.

	All n=732	DS^a Cases n=193	DS^a Controls n=539	AD^{bc} Cases n=43	AD^{bc} Controls n=689
Fever; n (%)	71 (10%)	12 (6%)	59 (11%)	1 (2%)	70 (10%)
Blood in stool; n (%)	6 (1%)	6 (3%)	0	0	6 (1%)

8 ^aDS=Diarrheal Symptoms; answered 'YES' to "diarrheal symptoms within the last 7 days".
 9 ^bAD=Acute Diarrhea; answered 'YES' "diarrheal symptoms within the last 7 days", and "three or more loose stools in the past 24
 10 hours", and "onset less than 7 days ago".
 11 ^cChildren with acute diarrhea were assessed for dehydration and all had 'no' dehydration.

12

1 REFERENCES

- 2 1. Liu L, Oza S, Hogan D, Chu Y, Perin J, Zhu J, et al. Global, regional, and national causes of under-5
3 mortality in 2000–15: an updated systematic analysis with implications for the Sustainable Development
4 Goals. *The Lancet*. 2016;388(10063):3027-35.
- 5 2. Pinkerton R, Oriá RB, Lima AA, Rogawski ET, Oriá MO, Patrick PD, et al. Early childhood diarrhea
6 predicts cognitive delays in later childhood independently of malnutrition. *Am J Trop Med Hyg*.
7 2016;95(5):1004-10.
- 8 3. Troeger C, Colombara DV, Rao PC, Khalil IA, Brown A, Brewer TG, et al. Global disability-adjusted
9 life-year estimates of long-term health burden and undernutrition attributable to diarrhoeal diseases in
10 children younger than 5 years. *The Lancet Global Health*. 2018;6(3):e255-e69.
- 11 4. Hussen S, Mulatu G, Yohannes Kassa Z. Prevalence of *Shigella* species and its drug resistance
12 pattern in Ethiopia: a systematic review and meta-analysis. *Annals of Clinical Microbiology and*
13 *Antimicrobials*. 2019;18(1):22.
- 14 5. Libby TE, Delawalla MLM, Al-Shimari F, MacLennan CA, Vannice KS, Pavlinac PB. Consequences
15 of *Shigella* infection in young children: a systematic review. *Int J Infect Dis*. 2023;129:78-95.
- 16 6. Anderson JDIV, Bagamian KH, Muhib F, Amaya MP, Laytner LA, Wierzba T, et al. Burden of
17 enterotoxigenic *Escherichia coli* and *Shigella* non-fatal diarrhoeal infections in 79 low-income and lower
18 middle-income countries: a modelling analysis. *The Lancet Global Health*. 2019;7(3):e321-e30.
- 19 7. Njuguna HN, Cosmas L, Williamson J, Nyachio D, Olack B, Ochieng JB, et al. Use of Population-
20 based surveillance to define the high incidence of shigellosis in an urban slum in Nairobi, Kenya. *PLOS*
21 *ONE*. 2013;8(3):e58437.
- 22 8. Kotloff KL, Winickoff JP, Ivanoff B, Clemens JD, Swerdlow DL, Sansonetti PJ, et al. Global burden
23 of *Shigella* infections: implications for vaccine development and implementation of control strategies.
24 *Bull World Health Organ*. 1999;77(8):651-66.
- 25 9. Deer DM, Lampel KA. Development of a multiplex real-time PCR assay with internal
26 amplification control for the detection of *Shigella* species and enteroinvasive *Escherichia coli*. *J Food*
27 *Prot*. 2010;73(9):1618-25.
- 28 10. Kotloff KL, Riddle MS, Platts-Mills JA, Pavlinac P, Zaidi AKM. Shigellosis. *The Lancet*.
29 2018;391(10122):801-12.
- 30 11. Baker S, Scott TA. Antimicrobial-resistant *Shigella*: where do we go next? *Nature Reviews*
31 *Microbiology*. 2023;21(7):409-10.
- 32 12. Lampel KA, Formal SB, Maurelli AT. A brief history of *Shigella*. *EcoSal Plus*.
33 2018;8(1):10.1128/ecosalplus.ESP-0006-2017.
- 34 13. Ranjbar R, Farahani A. *Shigella*: antibiotic-resistance mechanisms and new horizons for
35 treatment. *Infect Drug Resist*. 2019;12:3137-67.
- 36 14. Pan American Health Organization, World Health Organization. Epidemiological alert:
37 Emergence and spread of *Shigella sonnei* with extreme resistance to antibiotics. Potential risk for Latin
38 America and the Caribbean. Washington DC. 2022. [Available from:
39 [https://www.paho.org/en/documents/epidemiological-alert-emergence-and-spread-shigella-sonnei-](https://www.paho.org/en/documents/epidemiological-alert-emergence-and-spread-shigella-sonnei-extreme-resistance-antibiotics)
40 [extreme-resistance-antibiotics](https://www.paho.org/en/documents/epidemiological-alert-emergence-and-spread-shigella-sonnei-extreme-resistance-antibiotics)].
- 41 15. Liu J, Platts-Mills JA, Juma J, Kabir F, Nkeze J, Okoi C, et al. Use of quantitative molecular
42 diagnostic methods to identify causes of diarrhoea in children: a reanalysis of the GEMS case-control
43 study. *The Lancet*. 2016;388(10051):1291-301.
- 44 16. Platts-Mills JA, Liu J, Rogawski ET, Kabir F, Lertsethtakarn P, Sigua M, et al. Use of quantitative
45 molecular diagnostic methods to assess the aetiology, burden, and clinical characteristics of diarrhoea in

- 46 children in low-resource settings: a reanalysis of the MAL-ED cohort study. *The Lancet Global Health*.
47 2018;6(12):e1309-e18.
- 48 17. Hazen TH, Leonard SR, Lampel KA, Lacher DW, Maurelli AT, Rasko DA. Investigating the
49 relatedness of enteroinvasive *Escherichia coli* to other *E. coli* and *Shigella* isolates by using comparative
50 genomics. *Infect Immun*. 2016;84(8):2362-71.
- 51 18. Schroeder GN, Hilbi H. Molecular pathogenesis of *Shigella* spp.: controlling host cell signaling,
52 invasion, and death by type III secretion. *Clin Microbiol Rev*. 2008;21(1):134-56.
- 53 19. Venkatesan MM, Buysse JM, Kopecko DJ. Use of *Shigella flexneri ipaC* and *ipaH* gene sequences
54 for the general identification of *Shigella* spp. and enteroinvasive *Escherichia coli*. *J Clin Microbiol*.
55 1989;27(12):2687-91.
- 56 20. Klarman M, Schon J, Cajusma Y, Maples S, Beau de Rochars VEM, Baril C, et al. Opportunities to
57 catalyze improved healthcare access in pluralistic systems: a cross-sectional study in Haïti. *BMJ Open*.
58 2021;11(11):e047367.
- 59 21. Diaz JN, Iannotti LL, Louis Dulience SJ, Vie S, Jiang X, Grigura V, et al. Prevalence of diarrheagenic
60 *Escherichia coli* and impact on child health in Cap-Haïtien, Haïti. *PLOS Global Public Health*.
61 2023;3(5):e0001863.
- 62 22. Beau De Rochars VEM, Alam MT, Telisma T, Masse R, Chavannes S, Anilis MG, et al. Spectrum of
63 outpatient illness in a school-based cohort in Haïti, with a focus on diarrheal pathogens. *Am J Trop Med Hyg*.
64 2015;92(4):752-7.
- 65 23. Charles M, Delva GG, Boutin J, Severe K, Peck M, Mabou MM, et al. Importance of Cholera and
66 other etiologies of acute diarrhea in post-earthquake Port-au-Prince, Haïti. *Am J Trop Med Hyg*.
67 2014;90(3):511-7.
- 68 24. Dyer O. Haiti's health system collapsing under weight of doctors' strike. *BMJ*. 2016;354:i3939.
- 69 25. Estimation UNI-AGfCM. Levels & Trends in Child Mortality [Internet]. 2023 [Available from:
70 <https://childmortality.org/wp-content/uploads/2024/03/UNIGME-2023-Child-Mortality-Report.pdf>].
- 71 26. United Nations Children's Fund, World Health Organization. Immunization country profiles.
72 World Health Organization. 2024. [Available from: [https://data.unicef.org/resources/immunization-](https://data.unicef.org/resources/immunization-country-profiles/)
73 [country-profiles/](https://data.unicef.org/resources/immunization-country-profiles/)].
- 74 27. World Health Organization, United Nations Children's Fund. Model IMCI handbook: integrated
75 management of childhood illness. Geneva: World Health Organization. 2005. [Available from:
76 <http://apps.who.int/iris/bitstream/10665/42939/1/9241546441.pdf>].
- 77 28. Lappan R, Henry R, Chown SL, Luby SP, Higginson EE, Bata L, et al. Monitoring of diverse enteric
78 pathogens across environmental and host reservoirs with TaqMan array cards and standard qPCR: a
79 methodological comparison study. *The Lancet Planetary Health*. 2021;5(5):e297-e308.
- 80 29. Madi N, Cato ET, Abu Sayeed M, Creasy-Marrazzo A, Cuénod A, Islam K, et al. Phage predation,
81 disease severity, and pathogen genetic diversity in cholera patients. *Science*. 2024;384(6693):eadj3166.
- 82 30. Grembi JA, Mayer-Blackwell K, Luby SP, Spormann AM. High-Throughput Multiparallel
83 Enteropathogen Detection via Nano-Liter qPCR. *Frontiers in Cellular and Infection Microbiology*.
84 2020;10.
- 85 31. Maeda H, Fujimoto C, Haruki Y, Maeda T, Kokeyuchi S, Petelin M, et al. Quantitative real-time
86 PCR using TaqMan and SYBR Green for *Actinobacillus actinomycetemcomitans*, *Porphyromonas*
87 *gingivalis*, *Prevotella intermedia*, *tetQ* gene and total bacteria. *FEMS Immunol Med Microbiol*.
88 2003;39(1):81-6.
- 89 32. Ferguson J, O'Connell M. Estimating and displaying population attributable fractions using the R
90 package: graphPAF. *Eur J Epidemiol*. 2024;39(7):715-42.
- 91 33. Bruzzi P, Green SB, Byar DP, Brinton LA, Schairer C. Estimating the population attributable risk
92 for multiple risk factors using case-control data. *Am J Epidemiol*. 1985;122(5):904-14.

- 93 34. R Core Team. R: A Language and Environment for Statistical Computing. 2024. [Available from:
94 <https://www.R-project.org/>].
- 95 35. Posit Team. RStudio: Integrated Development Environment for R. 2024. [Available from:
96 <http://www.posit.co/>].
- 97 36. GraphPad Software. GraphPad Prism Version 10.4.1. (n.d.). [Available from:
98 www.graphpad.com].
- 99 37. de Onis M, Yip R, Mei Z. The development of MUAC-for-age reference data recommended by a
100 WHO Expert Committee. *Bull World Health Organ.* 1997;75(1):11-8.
- 101 38. WHO Multicentre Growth Reference Study Group. WHO Child Growth Standards based on
102 length/height, weight and age. *Acta Paediatr Suppl.* 2006;450:76-85.
- 103 39. Vu DT, Sethabutr O, Von Seidlein L, Tran VT, Do GC, Bui TC, et al. Detection of *Shigella* by a PCR
104 assay targeting the *ipaH* gene suggests increased prevalence of shigellosis in Nha Trang, Vietnam. *J Clin*
105 *Microbiol.* 2004;42(5):2031-5.
- 106 40. Huang Z, He Z, Wei Z, Wang W, Li Z, Xia X, et al. Correlation between prevalence of selected
107 enteropathogens and diarrhea in children: a case-control study in China. *Open Forum Infectious*
108 *Diseases.* 2021;8(10).
- 109 41. Løbersli I, Wester AL, Kristiansen Å, Brandal LT. Molecular differentiation of *Shigella* Spp. from
110 enteroinvasive *E. Coli*. *Eur J Microbiol Immunol (Bp).* 2016;6(3):197-205.
- 111 42. Giannella RA. Chapter 107 - infectious enteritis and proctocolitis and bacterial food poisoning.
112 In: Feldman M, Friedman LS, Brandt LJ, editors. *Sleisenger and Fordtran's Gastrointestinal and Liver*
113 *Disease (Ninth Edition)*. Philadelphia: W.B. Saunders; 2010. p. 1843-87.e7.
- 114 43. American Society of Microbiology. What's the significance of enteroinvasive *E. coli* (EIEC),
115 enteropathogenic *E. coli* (EPEC), and enteroaggregative *E. coli* (EAEC) in Stool? *American Society of*
116 *Microbiology: American Society of Microbiology; 2019* [Available from:
117 <https://asm.org/articles/2019/march/whats-the-significance-of-enteroinvasive-e-coli>].
- 118 44. Vieira N, Bates SJ, Solberg OD, Ponce K, Howsmon R, Cevallos W, et al. High prevalence of
119 enteroinvasive *Escherichia coli* isolated in a remote region of northern coastal Ecuador. *Am J Trop Med*
120 *Hyg.* 2007;76(3):528-33.
- 121 45. Sahl JW, Morris CR, Emberger J, Fraser CM, Ochieng JB, Juma J, et al. Defining the
122 phylogenomics of *Shigella* species: a pathway to diagnostics. *J Clin Microbiol.* 2015;53(3):951-60.
- 123 46. Kim HJ, Ryu JO, Song JY, Kim HY. Multiplex polymerase chain reaction for identification of
124 *Shigellae* and four *Shigella* species using novel genetic markers screened by comparative genomics.
125 *Foodborne Pathog Dis.* 2017;14(7):400-6.

126