

1 **Critically ill patients with a reverse blood pressure dipping phenotype at**  
2 **increased risk for delirium and death.**

3

4 Nadim El Jamal MD<sup>1</sup>, Thomas G. Brooks PhD<sup>1</sup>, Antonijo Mrcela, PhD<sup>1</sup>, Michael V. Genuardi<sup>2</sup>,  
5 MD, Garret A. FitzGerald MD<sup>1,2</sup> & Carsten Skarke MD<sup>1,2</sup>

6

7 <sup>1</sup> Institute for Translational Medicine and Therapeutics (ITMAT), University of Pennsylvania  
8 Perelman School of Medicine, Philadelphia, PA, USA

9 <sup>2</sup> Department of Medicine, University of Pennsylvania Perelman School of Medicine,  
10 Philadelphia, PA, USA

11

12 **Corresponding Authors:**

13 Nadim El Jamal MD ([Nadim.ElJamal@penncmedicine.upenn.edu](mailto:Nadim.ElJamal@penncmedicine.upenn.edu)) & Carsten Skarke, MD  
14 ([cskarke@penncmedicine.upenn.edu](mailto:cskarke@penncmedicine.upenn.edu), [skarkec@gmail.com](mailto:skarkec@gmail.com)) Institute for Translational Medicine  
15 and Therapeutics (ITMAT), University of Pennsylvania Perelman School of Medicine, Smilow  
16 Center for Translational Research 10-101, 3400 Civic Center Blvd, Philadelphia, Pennsylvania  
17 19104, USA

18

19

## 20 **Abstract**

21 **Background:** The ICU environment is disruptive to a patient's biological rhythms where sleep-  
22 wake cycles are often desynchronized from the environmental day-night changes. This puts  
23 patients at increased risk to develop delirium with consequent fiscal pressure for the health care  
24 system. An underappreciated dimension is how time-specific patient phenotypes in the critical  
25 care environment relate to clinical outcomes. We set out to analyze how rhythmic components  
26 (or the lack thereof) in physiological data streams sampled at high resolution in the ICU were  
27 associated with the future incidence of delirium and death. To offer cues for further interrogation  
28 into mechanism and risk prognosis, we examined differences in 24-hour fluctuations of clinical  
29 labs in ICU patient populations at risk.

30  
31 **Methods:** Rhythmic components using dipping ratios and JTK\_CYCLE statistics were derived  
32 from 24-hour blood pressure and heart rate measurements available from ICU patient admissions  
33 recorded in the MIMIC IV database. Logistic adjusted regression models assessed the association  
34 between disrupted vital sign rhythms and the future incidence of delirium during the same  
35 hospital admission and death. Aggregation of numeric clinical lab measurements across the first  
36 24 hours from all patient admissions allowed modelling of rhythmic patterns and subsequent  
37 association studies to link potential biochemical mechanisms to perturbed vital sign rhythms and  
38 adverse ICU outcomes.

39  
40 **Results:** Patients with reverse blood pressure dipping were at a 40% higher risk to have a  
41 diagnosis of delirium (Odds Ratio: 1.40, 95% CI: 1.14-1.72) and a 13% increased risk of death  
42 (Odds Ratio: 1.13, 95% CI: 1.02-1.26). Compared to the patient population with nocturnal blood

43 pressure dip, reverse dippers showed 24-hour biochemistry profiles suggestive of altered  
44 circadian programs specifically in clinical parameters of renal, metabolic, and hemostatic  
45 function.

46

47 **Conclusions:** Reverse blood pressure dipping can be an early sign for the future development of  
48 delirium in the ICU and is accompanied by disrupted biorhythms across multiple organ systems.  
49 Dampened and reversed heart rate and blood pressure rhythms are associated with a higher risk  
50 for death in ICU patients. Considering the inclusion of these risk factors in preventive care may  
51 improve patient outcomes and reduce burden on the health care system.

## 52 **Introduction**

53

54 The environment in the intensive care unit (ICU) with frequent checkups, procedures and  
55 abundant light and sound exposure is disruptive to a patient's biological rhythms. The most  
56 common concern in the ICU are sleep-wake cycles desynchronized from the environmental day-  
57 night changes. Large-scale quantification of disrupted sleep-wake cycles remains a challenge and  
58 requires dedicated tools ranging from surveys to wearable devices(1). However, physiological  
59 oscillators, such as heart rate, blood pressure, and body temperature, are recorded in the ICU at  
60 high frequencies(1-3) and may serve as proxy features to quantify the disruption of diurnal  
61 rhythms, allowing evaluation of the association of circadian disruption with clinical outcomes.

62

63 About a third of critically ill patients admitted to the ICU develop delirium, a condition described  
64 as a mental state of confusion with reduced awareness of surroundings.(4) Characteristic is a  
65 sudden onset over hours to days, and patients diagnosed with delirium face an increased  
66 incidence of dementia and mortality among other poor outcomes.(4-6) Delirium is multifactorial  
67 but notable risk factors for developing this condition include day to night disorientation and sleep  
68 deprivation which both indicate disrupted circadian programs.(4, 7) Longer hospital admissions,  
69 additional outpatient visits and increased needs for rehabilitation put an enormous strain on the  
70 health care system. The costs attributable to this have been estimated to amount to hundreds of  
71 billions of US dollars.(8)

72

73 Parsing diurnal variability in time series data allows to identify time-specific differences and  
74 their association to disease outcomes. In 24-hour blood pressure monitoring, for example, the

75 nocturnal dip is a commonly used metric to gauge a patient's risk to develop cardiovascular and  
76 kidney disease.(9-12) However, more comprehensive methods to interrogate daily oscillations  
77 have been developed. Adopting the JTK\_CYCLE algorithm that assesses the significance of  
78 rhythmic components, defined as repeat cycles in time series data where a steady increase  
79 towards a peak is followed by a steady decrease towards a trough, (13) we were able to improve  
80 risk stratification for patients with chronic renal insufficiency based on their 24-hour blood  
81 pressure profile.(14) For large cohort studies, we demonstrated the utility of rhythm  
82 measurement by associating dampened amplitudes of wrist temperature traces with the future  
83 onset of 73 diseases.(15) We extended this work to ask if we can identify rhythmic components  
84 in time series data collected in the ICU environment and how these relate to clinical outcomes.

85  
86 We leveraged MIMIC IV as an electronic health record dataset to parse time-specific vital signs  
87 and patient outcomes. We found that in the ICU environment, patients with reverse blood  
88 pressure dipping - known to be a high-risk phenotype for CVD - were at higher odds to be  
89 diagnosed in the future with delirium and to have higher mortality compared to patients with  
90 blood pressure dipping at night. Furthermore, we discerned diurnal fluctuations in clinical labs  
91 and found perturbed rhythms in markers of kidney metabolism and hemostasis which offer cues  
92 for further interrogation into mechanism and risk prognosis.

93

94

95

96

## 97 **Methods**

98

### 99 The MIMIC-IV Database

100

101 The Medical Information Mart for Intensive Care-IV (MIMIC-IV) database contains Electronic  
102 Health Record data of real ICU patient admissions from 73,181 ICU admissions at the Beth-  
103 Israel Deaconess Medical Center in Boston between 2008 and 2019.(16, 17) It contains vital  
104 signs recorded in patient charts at hourly intervals embedded in comprehensive in-hospital data  
105 such as diagnoses, procedures, diagnostic tests, medications, and intakes/outputs. Each patient is  
106 also followed up for out of hospital mortality for a maximum of 1 year post discharge from the  
107 last admission on record by tracking social security mortality data. The data were de-identified to  
108 maintain HIPAA standards with identifiers replaced by random ciphers. Dates were also shifted  
109 randomly such that a single date shift is applied to all data from the same individual. However,  
110 time of day and seasonality were preserved. We pulled the data from the study website  
111 (<https://physionet.org/content/mimiciv/2.2/>, version 2.2, downloaded January 5, 2023).

112

### 113 Rhythmic Assessments

114 We extracted the hourly recordings of systolic blood pressure (both arterial and non-invasive),  
115 temperature (the body site of measurement is not further specified), and heart rate. We excluded  
116 any readings that were outside the range of 50 mmHg to 200 mmHg for systolic blood pressure,  
117 30 °C to 43 °C for temperature, and 50 bpm to 150 bpm for heart rate. These criteria eliminated  
118 0.25% of all blood pressure readings, 0.08% of temperature readings, and 1.17% of heart rate  
119 readings. For each individual vital sign, we only included ICU admissions that had at least 14

120 daytime and 6 nighttime measurements to ensure an representative coverage of both day and  
121 night.(10) We specified nighttime as the interval between midnight and 6 am and daytime as that  
122 between 6 am and midnight. Because only 20% of ICU admissions fulfilled our inclusion criteria  
123 for temperature measurements, we excluded temperature from further analysis to decrease the  
124 risk of selection bias (Figure S1 bottom panel). We calculated non-parametric Jonckheere-  
125 Terpstra-Kendall (JTK)  $p$ -values, amplitude, as well dipping ratio (nighttime mean divided by  
126 daytime mean) for included admissions. Values for each admission were binned by hour of the  
127 day and the mean of each bin was used as input to JTK, thereby ensuring all admissions had  
128 between 20 and 24 datapoints, allowing  $p$ -values comparisons across admissions.(14) We used  
129 the JTK  $p$ -value to determine rhythmicity for each time series of vital signs ( $p \leq 0.05$ ).

130 To account for non-linear associations with amplitude, we categorized amplitude based on the  
131 quartiles of the studied populations (Table S1). Dipping status for both blood pressure and heart  
132 rate was categorized as dippers (dipping ratio  $\leq 0.9$ ), non-dippers ( $0.9 < \text{dipping ratio} \leq 1$ ) and  
133 reverse dippers (dipping ratio  $> 1$ ).(10) To study whether the disruption of rhythms in the first 24  
134 hours is associated with future adverse outcomes, we limited our study to vital sign data  
135 collected only during the first 24 hours of ICU admission. Admissions with less than 24 hours  
136 between first and last measurements were excluded from analysis. For each analysis, patients  
137 fulfilling our rhythm quality control criteria for more than one admission had one of their  
138 admissions chosen at random for inclusion.

139

#### 140 Clinical Outcomes and Statistical Analyses

141 Incident delirium was the primary outcome of interest. MIMIC-IV reports results from each  
142 component of the confusion assessment method (CAM).(18) As per CAM guidelines, we defined  
143 delirium as the presence of both a fluctuation in mental status from baseline and inattention and

144 the presence of either a decreased level of consciousness or disorganized thinking.(18) For our  
145 delirium analysis, we included patients with a negative CAM in the first 24 hours and with a  
146 repeat CAM after the first 24 hours. We then ran a logistic regression model containing each  
147 tested rhythmic parameter individually with the components of the OASIS score (Oxford Acute  
148 Severity of Illness Score); variables: Pre-ICU length of stay, age, Glasgow coma scale, heart rate,  
149 mean arterial pressure (MAP), respiratory rate, temperature, urine output, mechanical ventilation,  
150 elective surgery.(19) To adjust better, vital sign components were computed as actual 24-hour  
151 averages and included in the model with normal cubic spline functions; other components were  
152 derived from the PostgreSQL code provided by the MIMIC code repository.(20) We also studied  
153 mortality during the ICU visit or up to one month (30 days) afterwards from the day of  
154 admission using the same methodology. Resulting *p*-values for both outcome analyses were  
155 adjusted for multiple testing by the Benjamini-Hochberg method.(21) A *q*-value cutoff of 0.1 was  
156 considered as the threshold for statistical significance.

157 To explore rhythms in biochemical processes and their association with vital sign rhythms we  
158 aggregated all numeric clinical lab measurements across the first 24 hours from all patients with  
159 a vital sign rhythm pattern of interest after removing outlier values (beyond 1.5 times the second  
160 and third quartiles) and labs with less than 100 samples. If a patient had multiple visits, all were  
161 included, and dipping status was determined for each visit separately. We then ran a Cosinor  
162 analysis, with random intercept effects for subjects and admissions, using the lme4 R  
163 package.(22) To test for amplitude and rhythm differences among the patient groups, we used an  
164 F-test with the lmerTest package and Kenward-Rogers degrees of freedom to compare the nested  
165 model where both groups (dipping or reverse dipping) had separate cosinor fits to the model



166 where all groups had the same cosinor fit but separate intercepts.(23) We considered a  $q$ -value  
167 cutoff of 0.1 as the threshold for significant rhythm differences across compared groups.

168

## 169 **Results**

### 170 Patient Data Base Characteristics

171 Data recordings from most ICU patient admissions met the day-/nighttime coverage criteria for  
172 blood pressure (45,287 out of 73,181, 61.9%) and for heart rate (47,130 out of 73,181, 64.4%),  
173 (Figures S1 and S2). Illness severity parameters showed that a less healthy population was  
174 included and analyzed after filtering for rhythm quality control criteria for both heart rate and  
175 blood pressure (Table 1). After excluding repeat stays and stays with unmet CAM criteria, 7,346  
176 out of 73,181 (10%) and 7,552 out of 73,181 (10.3%) patient admissions remained for blood  
177 pressure and heart rate, respectively, which also qualified for delirium analysis (Figure S2). Most  
178 patients (76%) had only one ICU admission (Figure S3). A total of 33,970 (46.4% of all  
179 admissions) and 35,101 (48% of all admissions) admissions were submitted to the mortality  
180 analysis for blood pressure and heart rate, respectively (Figure S4).

181

### 182 Reverse blood pressure dipping phenotype predictive of future diagnosis of delirium.

183 Incident delirium was diagnosed in 15.9% (1,171 out of 7,346) and 15.7% (1,189 out of 7,552)  
184 of the included BP and HR ICU admissions, respectively. (Figure S2). Patients with a reverse  
185 blood pressure dipping phenotype had a 40% greater risk for developing delirium during their  
186 ICU admission (Odds Ratio: 1.40, 95% CI: 1.14-1.72,  $q=0.017$ , Figure 1 left, Table S2)  
187 compared to patients with a dipping blood pressure profile. Patients with a non-dipping BP  
188 profile, in contrast, did not show this association when compared to BP dippers (Odds Ratio:

189 1.01, 95% CI 0.81-1.24,  $q=0.971$ ). Assessment of rhythmic components of BP suggested a link  
190 between non-oscillating blood pressure profile (*JTK*  $p$ -value $>0.05$ ) and delirium (19% elevated  
191 risk), but this relationship has a higher false discovery rate (Odds Ratio: 1.19, 95%CI: 0.99-1.41,  
192  $q=0.238$ ). Though higher amplitudes of blood pressure oscillations showed a lower risk of  
193 delirium incidence compared to low amplitudes, this effect was small and non-significant (OR:  
194 0.94, 95%CI: 0.77-1.14,  $q=0.693$  comparing *JTK* Amplitude Q1 versus Q4 in Figure 1 left).

195  
196 Examining heart rate, patients with a reverse dipping phenotype showed a 22% higher risk for  
197 developing delirium during their ICU admission (Odds Ratio: 1.22, 95% CI: 0.99-1.49,  $q=0.238$ ,  
198 Figure 1 right) but that effect was not statistically significant.

199  
200 Dampened rhythms and reverse blood pressure dipping linked to increased risk of death.

201 The mortality rate among patients with sufficient blood pressure recordings but excluding repeat  
202 ICU admissions was 15.9% (5,403 deaths within a month from ICU admission) compared to  
203 16.3% (5,708 deaths) for the patient cohort meeting inclusion criteria for heart rate. Patients with  
204 a reverse dipping blood pressure profile had a 13% higher risk to die in the ICU setting within a  
205 month (Odds Ratio: 1.13, 95% CI: 1.02-1.26,  $q=0.07$ , Figure 2, Table S3). Also, compared to  
206 patients with a blood pressure amplitude in the first quartile, those in the third quartile were at a  
207 significantly lower risk of death (Odds Ratio 0.89 95% CI: 0.81-0.97,  $q=0.07$ ) and there was a  
208 non-significant trend in the same direction for those in the second and fourth quartile.  
209 Furthermore, patients with a more robust heart rate rhythm belonging to the third amplitude  
210 quartile were protected from dying (Odds Ratio: 0.83, 95% CI: 0.75-0.92,  $q=0.004$ ) as compared

211 to those in the lowest heart rate amplitude quartile (Figure 2, Table S3), and patients in the  
212 second and fourth quartile had a non-significant trend in the same direction.

213

214 Reverse blood pressure dipping is associated with multi-system rhythmic disruptions.

215 We explored whether reverse blood pressure dipping correlates with altered diurnal variability in  
216 biochemical processes assessed by clinical laboratory measurements (Figure S5). Because a  
217 single patient would rarely have enough repeated laboratory measurements to cover a 24-hour  
218 time series, we analyzed measurements across all patients belonging to either blood pressure  
219 dippers (controls) or reverse dippers (cases) in a mixed effects cosinor model. Among 101  
220 laboratory tests recorded in the first 24 hours in patients with representative coverage of both day  
221 and night (at least 14 daytime and 6 nighttime measurements as used for blood pressure rhythm  
222 quality control criteria), a total of 45 laboratory tests demonstrated a statistically significant  
223 difference in rhythmicity in the cosinor fits comparing BP reverse dippers to dippers ( $q$ -  
224 value $<0.01$ , Figure 3, Table S4, Figure S5). Candidates include hematocrit ( $q$ -value $\leq 0.001$ ),  
225 hemoglobin ( $q$ -value $<0.001$ ), arterial O<sub>2</sub> pressure ( $q$ -value $<0.001$ ), platelet count ( $q$ -  
226 value $<0.001$ ), glucose ( $q$ -value $<0.001$ ), creatinine ( $q$ -value $<0.001$ ), prothrombin time ( $q$ -  
227 value $<0.001$ ), INR ( $q$ -value $<0.001$ ), lymphocytes ( $q$ -value $=0.002$ ), WBC ( $q$ -value $\leq 0.001$ ), PTT  
228 ( $q$ -value $<0.001$ ), and monocytes ( $q$ -value $<0.001$ ), all reported to be oscillatory though some with  
229 conflicting results particularly in PT, PTT, and INR.(24-28)

230

231 Next, we examined rhythmic characteristics of these 45 labs to ascertain differences and  
232 commonalities between blood pressure dippers and reverse dippers (Figure 4A). Most of these  
233 clinical labs ( $n=29$ , 69%) displayed significant diurnal variability consistently in both groups

234 (cosinor  $q$ -value $\leq$ 0.1). About 14% (n=6) were only rhythmic in dippers. Among these were  
235 albumin and cortisol (Figure 4 B). The diurnal fluctuations in serum albumin levels in a healthy  
236 population likely contribute to time-specific blood pressure regulation through associated  
237 changes in oncotic pressure.(29) This functional relationship might deteriorate in reverse dippers  
238 as suggested by the lack of oscillatory albumin serum concentrations (Figure 4B). Cortisol's  
239 diurnal secretion patterns in healthy volunteers likely drive the time-specific sensitization of the  
240 vasculature to the noradrenergic system (30, 31) a mechanism linked to blood pressure  
241 control.(32) Here, the lack of significant oscillations in reverse dippers compared to dippers may  
242 suggest that disrupted diurnal cortisol levels contribute to this pathology (Figure 4 B).

243 About 17% (n=7) lab tests showed significant oscillations only in patients with the reverse blood  
244 pressure dipping phenotype (Figure 4A). This is an unexpected finding and warrants further  
245 examination in future studies since time-of-day specific fluctuations have been reported in the  
246 healthy for the coagulation system,(33) immune system,(34) lactic acid and uric acid (35, 36).  
247 Conceivable, however, is that gain in diurnal fluctuations in the coagulation system are indicative  
248 of transient states of hypercoagulability, a known hemostatic abnormality in critical illness  
249 leading to poorer outcomes.(4, 37)

250

251 We then turned our focus to laboratory features significantly oscillating in both groups to assess  
252 differences in rhythmic components between dippers and reverse dippers. To examine the  
253 rhythmic components of the 29 clinical labs that were rhythmic in both dippers and reverse  
254 dippers we quantified cosinor amplitudes and acrophases (time of day of the peak) (Figure 4C,  
255 Table S4). Kidney function as measured by serum creatinine showed a 60% decrease in  
256 amplitude in reverse dippers compared to dippers. This was accompanied by a phase advance of

257 11.8 hours in reverse dippers compared to dippers. BUN similarly demonstrated a reduction in  
258 amplitude (60% in reverse dippers compared to dippers). Here, the phase differences were  
259 smaller (3.3 hours in dippers respectively compared to dippers). Lab values indicative of acid  
260 base balance showed higher amplitude fluctuations in reverse dippers compared to dippers, for  
261 instance, 145% higher amplitude in arterial base excess, 76% in arterial pH amplitude and 36%  
262 in arterial CO<sub>2</sub> pressure amplitude. Electrolyte levels diverged, for example, by a 11-hour phase  
263 advance in non-ionized calcium levels in reverse dippers compared to dippers accompanied by a  
264 60% amplitude dampening. This contrasted with a 159% increase in ionized calcium amplitude  
265 in reverse dippers with minimal phase changes. Several hemostatic parameters showed distinct  
266 rhythmic components in reverse dippers compared to dippers. Prothrombin time (PT) fluctuated  
267 with a 333% higher amplitude in reverse dippers and amplitude was 40% higher in partial  
268 thromboplastin time (PTT). Thus, reverse blood pressure dipping was associated on a population  
269 level with perturbed rhythms in clinical parameters of renal, metabolic, and hemostatic function.  
270

## 271 **Discussion**

272 Our present study demonstrates that patients with a reverse blood pressure dipping phenotype  
273 had a 40% greater risk of developing delirium during their ICU admission compared to patients  
274 with the blood pressure dipping phenotype. We showed that patients with reverse blood pressure  
275 dipping and dampened amplitudes for blood pressure and heart rate within the first 24 hours of  
276 ICU admission had a 13% higher risk of death within one month of their ICU admission. We  
277 postulate that the link between reverse BP dipping and delirium/death is accompanied by  
278 perturbed rhythms in clinical parameters of renal, metabolic, and hemostatic function, thus  
279 offering potential biomarkers for further interrogation of mechanism and risk prognosis.

280

281 Our finding that reverse blood pressure dipping precedes a diagnosis of delirium is supported by  
282 published data. We also take studies on long term cognitive decline and dementia into  
283 consideration since delirium is an established risk factor for developing chronic forms of  
284 cognitive impairment.(5) A longitudinal cohort study in older men in Sweden found a 64%  
285 higher risk for future dementia (and Alzheimer's disease) among reverse dippers (HR: 1.64, 95%  
286 CI: 1.14-2.34).(38) The authors suggested reverse dipping as an independent risk factor for  
287 dementia (and Alzheimer's).(38) Several cross sectional studies support the link between reverse  
288 blood pressure dipping and chronic forms of cognitive decline.(39-41) A preliminary report of a  
289 functional study using the head-up tilt test detected a poorer autonomic function in participants  
290 with delirium compared to controls.(42)

291

292 The higher mortality we observed in patients with reverse blood pressure dipping and blunted  
293 diurnal rhythms of blood pressure and heart rate highlights how time series of vital sign

294 measurements routinely assessed in the critical care environment harbor information to  
295 understand patients' risk profile. Though our results strengthen comparable findings in the eICU  
296 Collaborative Research Database (43), other studies in the same database surprisingly reported  
297 that a higher amplitude of heart rate oscillations was associated with elevated in-hospital  
298 mortality. (44) These discrepant findings might be in part driven by varying numbers of day- and  
299 nighttime measurements. Our study addresses this potential limitation by ensuring both  
300 nighttime and daytime periods were adequately represented in every included time series (at least  
301 14 daytime and 6 nighttime measurements). Here, we advocate for a concerted effort to address  
302 research challenges in this space. (45)

303  
304 Reverse blood pressure dipping is an alteration of the normal diurnal phenotype and is likely  
305 accompanied by time-specific changes in biochemical processes. Indeed, our results showed that  
306 reverse blood pressure dipping was associated with altered diurnal phenotypes in various clinical  
307 laboratory measurements. An important finding, for example, is the absence of rhythmic cortisol  
308 levels in reverse dippers (Figure 4). While we cannot directly assess catecholamines in this  
309 database, activation of the hypothalamic pituitary axis usually accompanies increased  
310 sympathetic tone. (4) Based on that we speculate that a disturbance in cortisol rhythms is also  
311 mirrored by a disturbance in sympathetic tone that is oscillatory and plays a substantial role in  
312 regulating the diurnal variability in blood pressure. (46) Both elevated cortisol and sympathetic  
313 tone are associated with post-operative delirium. (4, 47) Reverse blood pressure dipping can thus  
314 be a consequence of disturbed autonomic nervous system rhythms that may increase the risk for  
315 developing delirium and other adverse outcomes. Given the specific roles the autonomic nervous  
316 system exerts on different physiologic systems including metabolism, renal function, and lung

317 function (48), we speculate that the autonomic nervous system may thus represent a unifying  
318 candidate biomarker justifying further interrogation in future experimental studies. (10)

319

320 Our study has several strengths. We used a well curated, well documented, and commonly used  
321 database containing patient trajectories from a respected academic center. The size of the  
322 database permitted our application of strict inclusion criteria to ensure an adequate coverage of  
323 the first 24 hours for our rhythmic assessments. The database also recorded time-stamped CAM  
324 assessments, a well validated commonly used instrument to detect delirium. This enabled us to  
325 assign delirium diagnoses with a higher level of certainty than relying on diagnostic codes,  
326 which might have missed true positives.(4) Due to a low frequency of body temperature  
327 measurements and the consequent lack of confidence in their rhythmic assessments we had to  
328 abandon this biomarker. We also found that body temperature data were skewed; patients that  
329 had their temperature measured frequently were sicker. Another limitation inherent to this  
330 database is the observational design with a high degree of variability in patients, disease  
331 conditions, co-morbidities, and treatments. Overall, sicker patients might be over-represented  
332 since they likely had more interactions documented in the database due to higher care intensity.  
333 While pooling lab results from different patients is valuable to enable time-series statistics,  
334 options should be explored for repeat within-person biosampling. Lastly, the biomarker  
335 discovery is predetermined by the clinical lab panel.

336

## 337 **Conclusion**

338 Reverse blood pressure dipping can be an early sign for the future development of delirium in the  
339 ICU and is accompanied by disrupted biorhythms across multiple organ systems. Dampened and



340 reversed heart rate and blood pressure rhythms are associated with a higher risk for death in ICU  
341 patients. Considering the inclusion of these risk factors in preventive care may improve patient  
342 outcomes and reduce burden on the health care system.

343

## 344 **Disclosures**

345 CS is the Robert L. McNeil Jr. Fellow in Translational Medicine and Therapeutics. GAF is the  
346 McNeil Professor of Translational Medicine and Therapeutics. The content is solely the  
347 responsibility of the authors and does not necessarily represent the official views of the NIH.

348

## 349 **Availability of data and materials**

350 Data used in this study is available for credentialed users at

351 <https://physionet.org/content/mimiciv/2.2/>. All statistics derived from the dataset are available in  
352 [with the supplemental material attached to this manuscript.](#)

353 The code developed for this study is freely available at:

354 [https://zenodo.org/records/14750969?preview=1&token=eyJhbGciOiJIUzUxMiJ9.eyJpZCI6ImEwMDZiNzRmLWE1NTAtNDVmZi1iMjcZLTcwZDhjYmRhN2ZlOSIsImRhdGEiOnt9LCJyYW5kb20iOiJhZGRlMGQ3NjBiNWQ2MTM4YjZmOTE0MzNkZGQyOWYzZiJ9.2n0wyJLE\\_wMBQEiT5WR\\_NghvXgL5nakSEXJdGkw-VB6UCmantTQqiADE23S6GicaDAir2qfs-ST0JI4IyAKw2g](https://zenodo.org/records/14750969?preview=1&token=eyJhbGciOiJIUzUxMiJ9.eyJpZCI6ImEwMDZiNzRmLWE1NTAtNDVmZi1iMjcZLTcwZDhjYmRhN2ZlOSIsImRhdGEiOnt9LCJyYW5kb20iOiJhZGRlMGQ3NjBiNWQ2MTM4YjZmOTE0MzNkZGQyOWYzZiJ9.2n0wyJLE_wMBQEiT5WR_NghvXgL5nakSEXJdGkw-VB6UCmantTQqiADE23S6GicaDAir2qfs-ST0JI4IyAKw2g)

359

## 360 **Ethics declarations:**

361 The MIMIC IV study was approved by the institutional review board at the Beth Israel  
362 Deaconess Medical Center and was granted a waiver of informed consent.



## 364 References

- 365 1. Reid KJ. Assessment of Circadian Rhythms. *Neurol Clin.* 2019;37(3):505-26. DOI:  
366 10.1016/j.ncl.2019.05.001
- 367 2. Hayter EA, Wehrens SMT, Van Dongen HPA, Stangherlin A, Gaddameedhi S, Crooks E,  
368 et al. Distinct circadian mechanisms govern cardiac rhythms and susceptibility to arrhythmia.  
369 *Nat Commun.* 2021;12(1):2472. DOI: 10.1038/s41467-021-22788-8
- 370 3. Smolensky MH, Hermida RC, Portaluppi F. Circadian mechanisms of 24-hour blood  
371 pressure regulation and patterning. *Sleep Med Rev.* 2017;33:4-16. DOI:  
372 10.1016/j.smr.2016.02.003
- 373 4. Wilson JE, Mart MF, Cunningham C, Shehabi Y, Girard TD, MacLulich AMJ, et al.  
374 *Delirium.* *Nat Rev Dis Primers.* 2020;6(1):90. DOI: 10.1038/s41572-020-00223-4
- 375 5. Fong TG, Inouye SK. The inter-relationship between delirium and dementia: the  
376 importance of delirium prevention. *Nat Rev Neurol.* 2022;18(10):579-96. DOI: 10.1038/s41582-  
377 022-00698-7
- 378 6. Jackson TA, Wilson D, Richardson S, Lord JM. Predicting outcome in older hospital  
379 patients with delirium: a systematic literature review. *Int J Geriatr Psychiatry.* 2016;31(4):392-9.  
380 DOI: 10.1002/gps.4344
- 381 7. Daou M, Telias I, Younes M, Brochard L, Wilcox ME. Abnormal Sleep, Circadian  
382 Rhythm Disruption, and Delirium in the ICU: Are They Related? *Front Neurol.* 2020;11:549908.  
383 DOI: 10.3389/fneur.2020.549908
- 384 8. Goldberg TE, Chen C, Wang Y, Jung E, Swanson A, Ing C, et al. Association of Delirium  
385 With Long-term Cognitive Decline: A Meta-analysis. *JAMA Neurology.* 2020;77(11):1373-81.  
386 DOI: 10.1001/jamaneurol.2020.2273
- 387 9. Komori T, Eguchi K, Saito T, Hoshida S, Kario K. Riser Pattern Is a Novel Predictor of  
388 Adverse Events in Heart Failure Patients With Preserved Ejection Fraction. *Circ J.*  
389 2017;81(2):220-6. DOI: 10.1253/circj.CJ-16-0740
- 390 10. Rahman M, Wang X, Bundy JD, Charleston J, Cohen D, Cohen J, et al. Prognostic  
391 Significance of Ambulatory BP Monitoring in CKD: A Report from the Chronic Renal  
392 Insufficiency Cohort (CRIC) Study. *J Am Soc Nephrol.* 2020;31(11):2609-21. DOI:  
393 10.1681/ASN.2020030236
- 394 11. Sawamura A, Okumura T, Takeshita K, Watanabe N, Kano N, Mori H, et al. Abnormal  
395 Circadian Blood Pressure Profile as a Prognostic Marker in Patients with Nonischemic Dilated  
396 Cardiomyopathy. *Cardiology.* 2017;136(1):1-9. DOI: 10.1159/000446868
- 397 12. Ueda T, Kawakami R, Nakada Y, Nakano T, Nakagawa H, Matsui M, et al. Differences in  
398 blood pressure riser pattern in patients with acute heart failure with reduced mid-range and  
399 preserved ejection fraction. *ESC Heart Fail.* 2019;6(5):1057-67. DOI: 10.1002/ehf2.12500
- 400 13. Hughes ME, Hogenesch JB, Kornacker K. JTK\_CYCLE: an efficient nonparametric  
401 algorithm for detecting rhythmic components in genome-scale data sets. *J Biol Rhythms.*  
402 2010;25(5):372-80. DOI: 10.1177/0748730410379711
- 403 14. El Jamal N, Brooks TG, Cohen J, Townsend RR, Sosa GR, Shah V, et al. Prognostic  
404 utility of rhythmic components in 24-h ambulatory blood pressure monitoring for the risk  
405 stratification of chronic kidney disease patients with cardiovascular co-morbidity. *J Hum*  
406 *Hypertens.* 2024. DOI: 10.1038/s41371-023-00884-0

- 407 15. Brooks TG, Lahens NF, Grant GR, Sheline YI, FitzGerald GA, Skarke C. Diurnal  
408 rhythms of wrist temperature are associated with future disease risk in the UK Biobank. *Nat*  
409 *Commun.* 2023;14(1):5172. DOI: 10.1038/s41467-023-40977-5
- 410 16. Johnson A, Bulgarelli L, Pollard T, Horng S, Celi LA, Mark R. MIMIV-IV (version 2.2).  
411 Physionet [Internet]. 2023 10-13-2023. Available from: <https://doi.org/10.13026/6mm1-ek67>.
- 412 17. Johnson AEW, Bulgarelli L, Shen L, Gayles A, Shammout A, Horng S, et al. MIMIC-IV,  
413 a freely accessible electronic health record dataset. *Sci Data.* 2023;10(1):1. DOI:  
414 10.1038/s41597-022-01899-x
- 415 18. SK I. The Short Confusion Assessment Method (Short CAM) Training Manual and  
416 Coding Guide. Boston: Hospital Elder Life Program. 2014.
- 417 19. Johnson AE, Kramer AA, Clifford GD. A new severity of illness scale using a subset of  
418 Acute Physiology And Chronic Health Evaluation data elements shows comparable predictive  
419 accuracy. *Crit Care Med.* 2013;41(7):1711-8. DOI: 10.1097/CCM.0b013e31828a24fe
- 420 20. Johnson AE, Stone DJ, Celi LA, Pollard TJ. The MIMIC Code Repository: enabling  
421 reproducibility in critical care research. *J Am Med Inform Assoc.* 2018;25(1):32-9. DOI:  
422 10.1093/jamia/ocx084
- 423 21. Benjamini Y, Hochberg Y. Controlling the False Discovery Rate: A Practical and  
424 Powerful Approach to Multiple Testing. *Journal of the Royal Statistical Society Series B:*  
425 *Statistical Methodology.* 1995;57(1):289-300. DOI: 10.1111/j.2517-6161.1995.tb02031.x
- 426 22. Bates D, Mächler M, Bolker B, Walker S. Fitting Linear Mixed-Effects Models  
427 Usinglme4. *Journal of Statistical Software.* 2015;67(1). DOI: 10.18637/jss.v067.i01
- 428 23. Cornelissen G. Cosinor-based rhythmometry. *Theor Biol Med Model.* 2014;11:16. DOI:  
429 10.1186/1742-4682-11-16
- 430 24. Cristancho E, Riveros A, Sanchez A, Penuela O, Boning D. Diurnal changes of arterial  
431 oxygen saturation and erythropoietin concentration in male and female highlanders. *Physiol Rep.*  
432 2016;4(17). DOI: 10.14814/phy2.12901
- 433 25. Van Cauter E, Polonsky KS, Scheen AJ. Roles of circadian rhythmicity and sleep in  
434 human glucose regulation. *Endocr Rev.* 1997;18(5):716-38. DOI: 10.1210/edrv.18.5.0317
- 435 26. Eckerbom P, Hansell P, Cox E, Buchanan C, Weis J, Palm F, et al. Circadian variation in  
436 renal blood flow and kidney function in healthy volunteers monitored with noninvasive magnetic  
437 resonance imaging. *Am J Physiol Renal Physiol.* 2020;319(6):F966-F78. DOI:  
438 10.1152/ajprenal.00311.2020
- 439 27. Busza A, Sharma V, Ferguson K, Fawcett A, Knoll J, Zee P, et al. 0028 Systematic  
440 Review: Time of day differences in complete blood count values. *Sleep.*  
441 2023;46(Supplement\_1):A12-A. DOI: 10.1093/sleep/zsad077.0028
- 442 28. West AS, Schonsted MI, Iversen HK. Impact of the circadian clock on fibrinolysis and  
443 coagulation in healthy individuals and cardiovascular patients - A systematic review. *Thromb*  
444 *Res.* 2021;207:75-84. DOI: 10.1016/j.thromres.2021.09.011
- 445 29. Jubiz W, Canterbury JM, Reiss E, Tyler FH. Circadian rhythm in serum parathyroid  
446 hormone concentration in human subjects: correlation with serum calcium, phosphate, albumin,  
447 and growth hormone levels. *J Clin Invest.* 1972;51(8):2040-6. DOI: 10.1172/JCI107010
- 448 30. Yang S, Zhang L. Glucocorticoids and vascular reactivity. *Curr Vasc Pharmacol.*  
449 2004;2(1):1-12. DOI: 10.2174/1570161043476483
- 450 31. Weitzman ED, Fukushima D, Nogeire C, Roffwarg H, Gallagher TF, Hellman L. Twenty-  
451 four hour pattern of the episodic secretion of cortisol in normal subjects. *J Clin Endocrinol*  
452 *Metab.* 1971;33(1):14-22. DOI: 10.1210/jcem-33-1-14

- 453 32. Holt-Lunstad J, Steffen PR. Diurnal cortisol variation is associated with nocturnal blood  
454 pressure dipping. *Psychosom Med*. 2007;69(4):339-43. DOI: 10.1097/PSY.0b013e318050d6cc
- 455 33. Kapiotis S, Jilma B, Quehenberger P, Ruzicka K, Handler S, Speiser W. Morning  
456 hypercoagulability and hypofibrinolysis. Diurnal variations in circulating activated factor VII,  
457 prothrombin fragment F1+2, and plasmin-plasmin inhibitor complex. *Circulation*.  
458 1997;96(1):19-21. DOI: 10.1161/01.cir.96.1.19
- 459 34. Scheiermann C, Kunisaki Y, Frenette PS. Circadian control of the immune system. *Nat*  
460 *Rev Immunol*. 2013;13(3):190-8. DOI: 10.1038/nri3386
- 461 35. Devgun MS, Dhillon HS. Importance of diurnal variations on clinical value and  
462 interpretation of serum urate measurements. *J Clin Pathol*. 1992;45(2):110-3. DOI:  
463 10.1136/jcp.45.2.110
- 464 36. Feneberg R, Sparber M, Veldhuis JD, Mehls O, Ritz E, Schaefer F. Synchronous  
465 fluctuations of blood insulin and lactate concentrations in humans. *J Clin Endocrinol Metab*.  
466 1999;84(1):220-7. DOI: 10.1210/jcem.84.1.5377
- 467 37. Levi M, Opal SM. Coagulation abnormalities in critically ill patients. *Crit Care*.  
468 2006;10(4):222. DOI: 10.1186/cc4975
- 469 38. Tan X, Sundstrom J, Lind L, Franzon K, Kilander L, Benedict C. Reverse Dipping of  
470 Systolic Blood Pressure Is Associated With Increased Dementia Risk in Older Men: A  
471 Longitudinal Study Over 24 Years. *Hypertension*. 2021;77(4):1383-90. DOI:  
472 10.1161/HYPERTENSIONAHA.120.16711
- 473 39. Gavriilaki M, Anyfanti P, Mastrogiannis K, Gavriilaki E, Lazaridis A, Kimiskidis V, et al.  
474 Association between ambulatory blood pressure monitoring patterns with cognitive function and  
475 risk of dementia: a systematic review and meta-analysis. *Aging Clin Exp Res*. 2023;35(4):745-  
476 61. DOI: 10.1007/s40520-023-02361-7
- 477 40. Shanahan E, Carew S, Costelloe A, Sheehy T, Kiernan T, Peters C, et al. 108abnormal  
478 Diurnal Blood Pressure Variability in Patients with Recent Delirium. *Age and Ageing*.  
479 2019;48(Supplement\_1):i32-i5. DOI: 10.1093/ageing/afy204.01
- 480 41. Paganini-Hill A, Bryant N, Corrada MM, Greenia DE, Fletcher E, Singh B, et al. Blood  
481 Pressure Circadian Variation, Cognition and Brain Imaging in 90+ Year-Olds. *Front Aging*  
482 *Neurosci*. 2019;11:54. DOI: 10.3389/fnagi.2019.00054
- 483 42. Shanahan E, Ryan S, Costelloe A, Sheehy T, Peters C, Lyons D, et al. 68 Autonomic  
484 Impairment and its Manifestations in Patients with Delirium. *Age and Ageing*.  
485 2019;48(Supplement\_3):iii17-iii65. DOI: 10.1093/ageing/afz103.37
- 486 43. Beyer SE, Salgado C, Garcao I, Celi LA, Vieira S. Circadian rhythm in critically ill  
487 patients: Insights from the eICU Database. *Cardiovasc Digit Health J*. 2021;2(2):118-25. DOI:  
488 10.1016/j.cvdhj.2021.01.004
- 489 44. Yang Z, Li Z, He X, Yao Z, Xie X, Zhang S, et al. The impact of heart rate circadian  
490 rhythm on in-hospital mortality in patients with stroke and critically ill: Insights from the eICU  
491 Collaborative Research Database. *Heart Rhythm*. 2022;19(8):1325-33. DOI:  
492 10.1016/j.hrthm.2022.03.1230
- 493 45. Kerzee L, Dashti HS, Pilz LK, Skarke C, Ruben MD. Using routinely collected clinical  
494 data for circadian medicine: A review of opportunities and challenges. *PLOS Digit Health*.  
495 2024;3(5):e0000511. DOI: 10.1371/journal.pdig.0000511
- 496 46. El Jamal N, Lordan R, Teegarden SL, Grosser T, FitzGerald G. The Circadian Biology of  
497 Heart Failure. *Circ Res*. 2023;132(2):223-37. DOI: 10.1161/CIRCRESAHA.122.321369

- 498 47. Mu DL, Wang DX, Li LH, Shan GJ, Li J, Yu QJ, et al. High serum cortisol level is  
499 associated with increased risk of delirium after coronary artery bypass graft surgery: a  
500 prospective cohort study. Crit Care. 2010;14(6):R238. DOI: 10.1186/cc9393
- 501 48. Sullivan RP, Houser SR, Koch WJ. Neurotransmission: The Autonomic and Somatic  
502 Motor Nervous Systems. In: Brunton LL, Knollmann BC, editors. Goodman & Gilman's:  
503 The Pharmacological Basis of Therapeutics, 14th Edition. New York, NY: McGraw-Hill  
504 Education; 2023.
- 505
- 506
- 507



509 **Tables**

510 **Table 1.** Patient characteristics collected during the first 24 hours for comparing admissions in  
 511 the MIMIC IV database fulfilling quality control criteria of vital sign measurements to those that  
 512 do not fulfill the criteria. **GCS:** Glasgow Coma Scale, **MAP:** Mean Arterial Pressure.

513

	BP Rhythm Inclusion Criteria Absent (n=27,597)	BP Rhythm Inclusion Criteria Present (n=45,287)		HR Rhythm Inclusion Criteria Absent (n=25,936)	HR Rhythm Inclusion Criteria Present (n=47,130)	
Parameter	Mean (SD), or n (%)	Mean (SD), or n (%)	<i>p-</i> <i>Value</i>	Mean (SD), or n (%)	Mean (SD), or n (%)	<i>p-</i> <i>Value</i>
OASIS score	28.81 (8.58)	31.40 (8.42)	<0.001	28.70 (8.53)	31.36 (8.47)	<0.001
Age (years)	63.44 (17.49)	65.43 (16.46)	<0.001	63.66 (17.42)	65.23 (16.55)	<0.001
Race			<0.001			0.006
American Indian or Alaska Native	46 ( 0.2)	92 ( 0.2)		42 ( 0.2)	96 ( 0.2)	
Asian	838 ( 3.0)	1312 ( 2.9)		785 ( 3.0)	1364 ( 2.9)	
Black	3124 (11.4)	4795 (10.6)		2884 (11.1)	5060 (10.7)	



More than one race	22 ( 0.1)	46 ( 0.1)		23 ( 0.1)	45 ( 0.1)	
Native Hawaiian or Other Pacific Islander	48 ( 0.2)	62 ( 0.1)		44 ( 0.2)	66 ( 0.1)	
Other	902 ( 3.3)	1459 ( 3.2)		854 ( 3.3)	1511 ( 3.2)	
Unknown	2729 ( 9.9)	4911 (10.8)		2568 ( 9.9)	5101 (10.8)	
White	19808 (72.0)	32610 (72.0)		18707 (72.2)	33887 (71.9)	
Sex (M)	15178 (55.2)	25411 (56.1)	0.012	14480 (55.9)	26253 (55.7)	0.628
Pre-ICU length of stay (hours)	2147.19 (6893.04)	3463.88 (10243.00)	<0.001	2151.87 (7048.70)	3423.31 (10097.05)	<0.001
(days)	89.46 (287.2)	144.33 (426.79)		89.66 (293.70)	142.64 (420.71)	
GCS	13.93 (2.41)	13.52 (2.73)	<0.001	13.94 (2.41)	13.53 (2.73)	<0.001
Heart rate (bpm)	83.63 (14.97)	85.87 (15.52)	<0.001	82.59 (15.54)	86.39 (15.09)	<0.001
SBP (mmHg)	119.44 (17.24)	117.73 (16.04)	<0.001	119.36 (16.90)	117.83 (16.28)	<0.001
Respiratory rate (/min)	24.40 (9.38)	26.55 (9.47)	<0.001	24.07 (9.41)	26.65 (9.42)	<0.001

Temperature (Celsius)	36.77 (0.51)	36.86 (0.50)	<0.001	36.76 (0.52)	36.87 (0.50)	<0.001
Urine output (ml)	1553.69 (1146.38)	1880.69 (1278.78)	<0.001	1531.32 (1113.07)	1882.27 (1290.12)	<0.001
Mechanical ventilation (%)	6973 (25.3)	17603 (38.9)	<0.001	6616 (25.5)	18068 (38.3)	<0.001
Elective surgery (%)	764 ( 2.8)	1200 ( 2.6)	0.318	747 ( 2.9)	1226 ( 2.6)	0.026

514

515

516

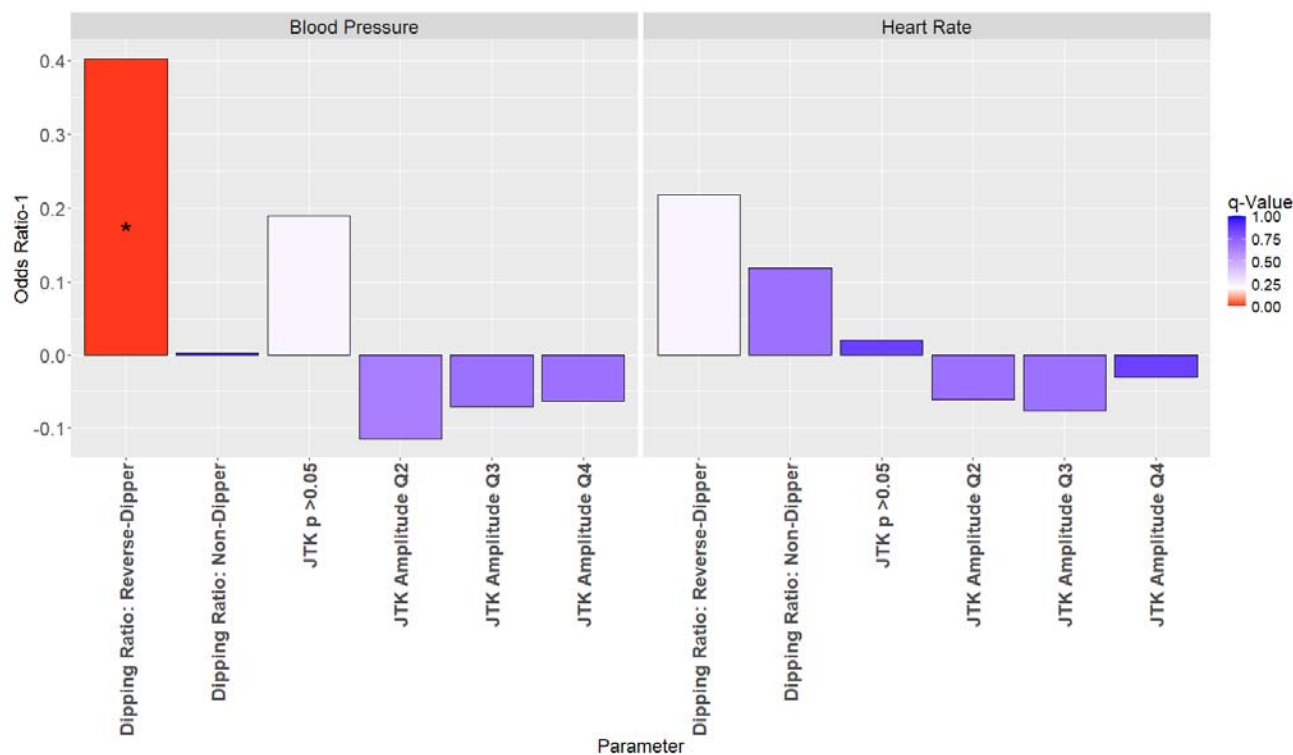
517 Table 2. **Rhythmic parameter summary statistics for admissions fulfilling rhythm quality**  
 518 **control criteria.** Rhythmic parameter summary statistics are not possible in excluded visits due  
 519 to low result confidence in time series data that does not fulfil quality control criteria.

	BP Rhythm Inclusion Criteria Present (n=45,287)	HR Rhythm Inclusion Criteria Present (n=47,130)
Parameter	Mean (SD), or n (%)	Mean (SD), or n (%)
JTK Amplitude	9.27 (4.71)	6.72 (4.43)
JTK p value >0.05 (%)	36383 (80.3)	27396 (58.1)
Dipping Category		
Dipper (%)	5981 (13.2)	6706 (14.2)
Non- Dipper	20971 (46.3)	20360 (43.2)

(%)		
Reverse-Dippers	18335 (40.5%)	20064 (42.6)

520

## 521 Figures

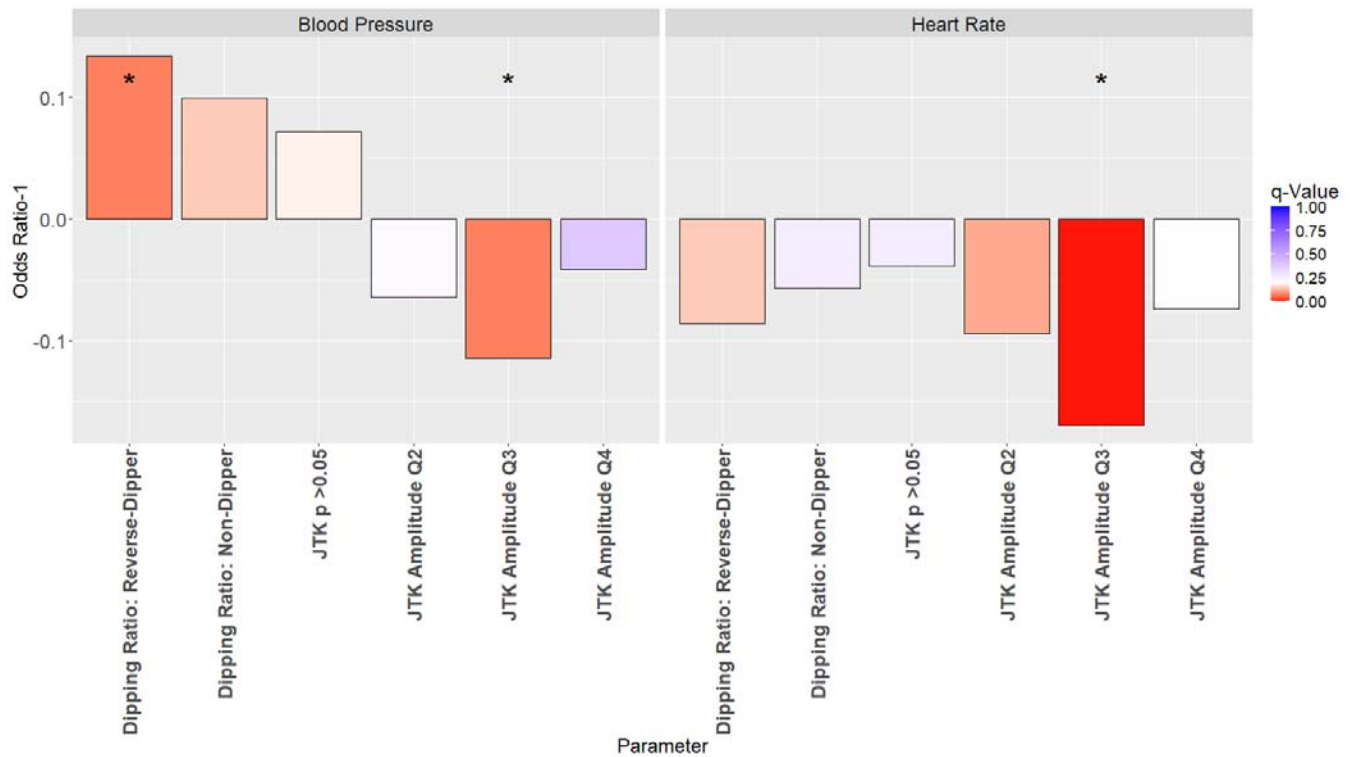


522

523 **Figure 1.** Associations between different rhythm parameters and the future development of  
524 delirium. The left panel displays results from the logistic regression models testing blood  
525 pressure rhythmic parameters, the right panel displays results from heart rate rhythmic  
526 parameters. Reference categories are Dippers, JTK  $p$ -value  $\leq 0.05$ , and JTK Amplitude Q1  
527 respectively.  $q$ -values are the results of multiple testing corrections of  $p$ -values using the  
528 Benjamini-Hochberg method. \*  $q$ -value  $\leq 0.1$ .

529

530

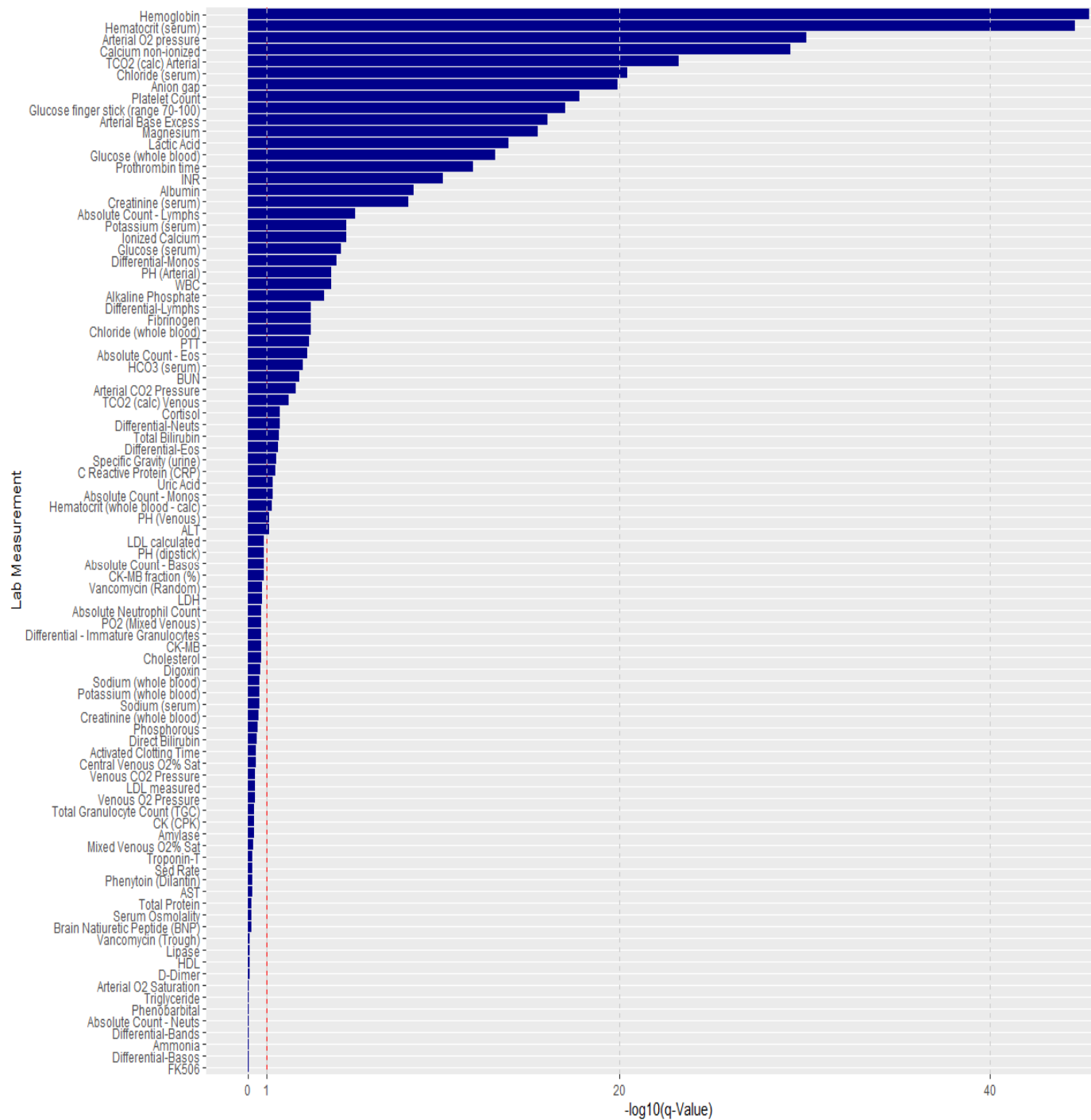


531

532 **Figure 2.** Associations between different rhythm parameters and 1 year mortality. The left panel  
533 displays results from the logistic regression models testing blood pressure rhythmic parameters,  
534 the right panel displays results from heart rate rhythmic parameters. Reference categories are  
535 Dippers, JTK  $p$ -value  $\leq 0.05$ , and JTK Amplitude Q1 respectively.  $q$ - values are the results of  
536 multiple testing corrections of  $p$ -values using the Benjamini-Hochberg method. \*  $q$ -Value  $\leq 0.1$ .

537

538

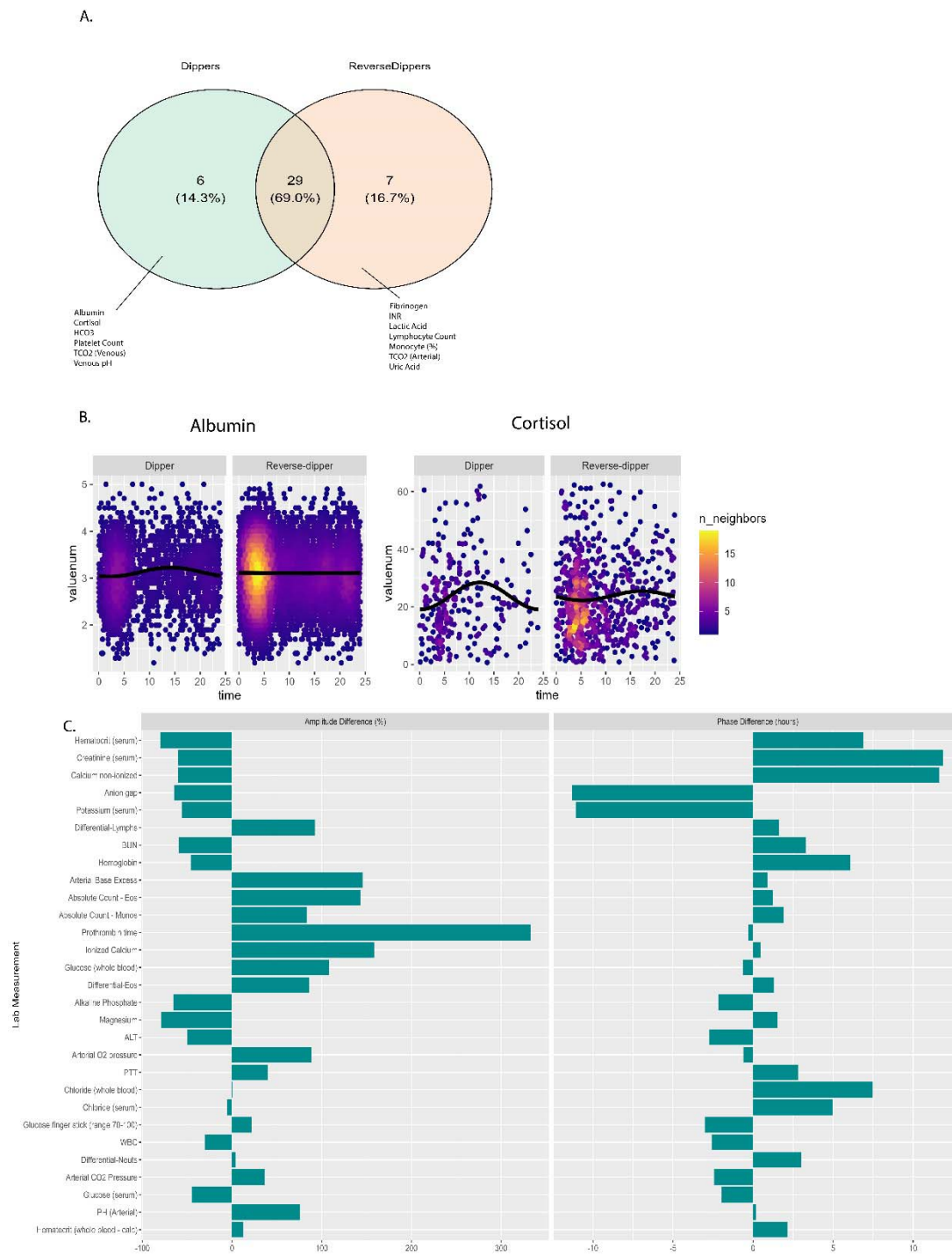


539

540

541 **Figure 3.** Significance levels of differences between blood pressure dipping statuses in cosinor  
542 fits of clinical laboratory measurements across the first 24 hours. The red line indicates a q-value  
543 cutoff  
544 of 0.1 for statistical significance. The actual values behind the graph are in Table S4.

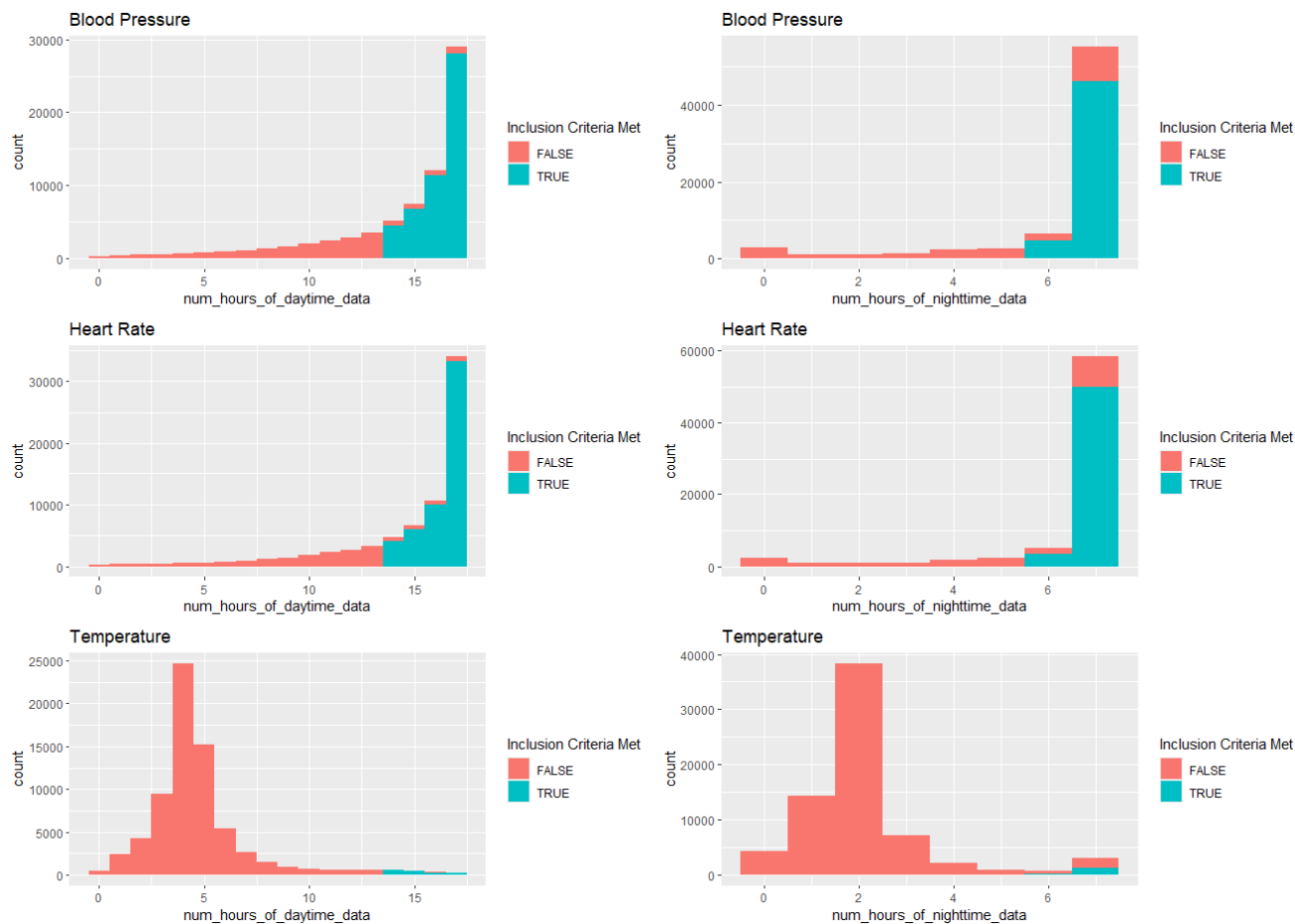




545  
 546 **Figure 4.** Amplitude and phase differences calculated from cosinor fits for laboratory  
 547 measurements that showed statistically significant differences in cosinor fits between blood

548 pressure dippers and reverse dippers. Values shown are relative to dippers and sorted by  
549 decreasing amplitude and phase differences. The actual values behind the graphs are in Table S4.  
550

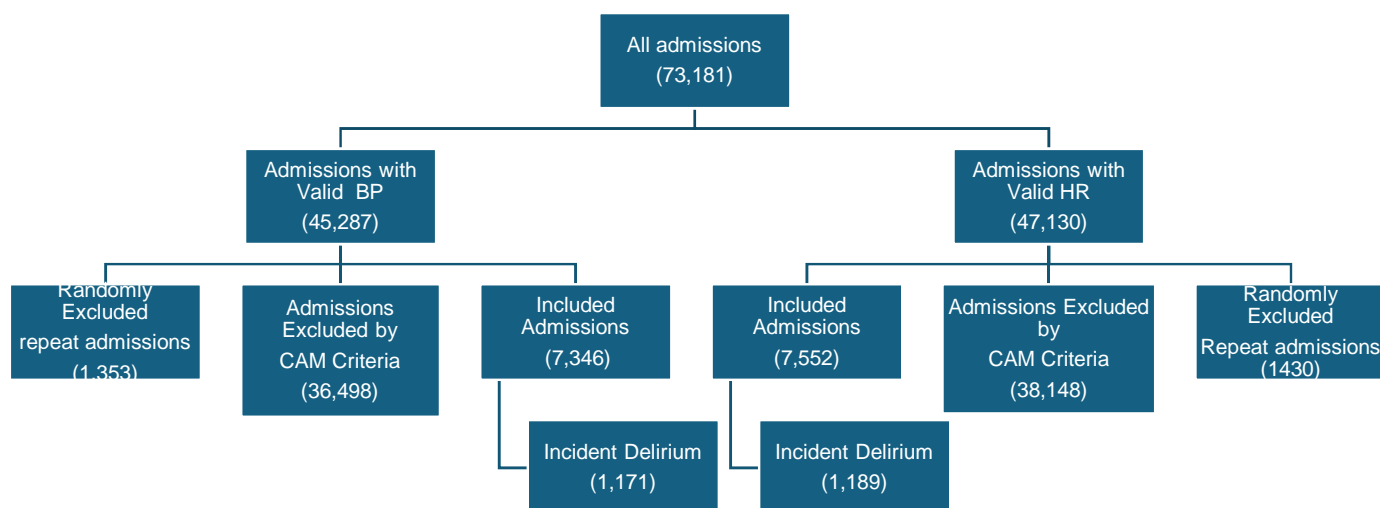
## 551 Supplementary Figures



552  
553 |

554 **Figure S1.** Histograms showing the number of admissions having each maximum number of  
555 hours of data recording in the daytime (left) and the nighttime (right). The blue bars represent the  
556 admissions that fulfilled our time series inclusion criteria, and the orange bars represent the  
557 admissions that do not meet the criteria. The majority of admissions have blood pressure and  
558 heart rate time series data that fulfil the inclusion criteria while only a minority of cases meet the  
559 criteria in temperature. Note the different scales of x and y axes.

560

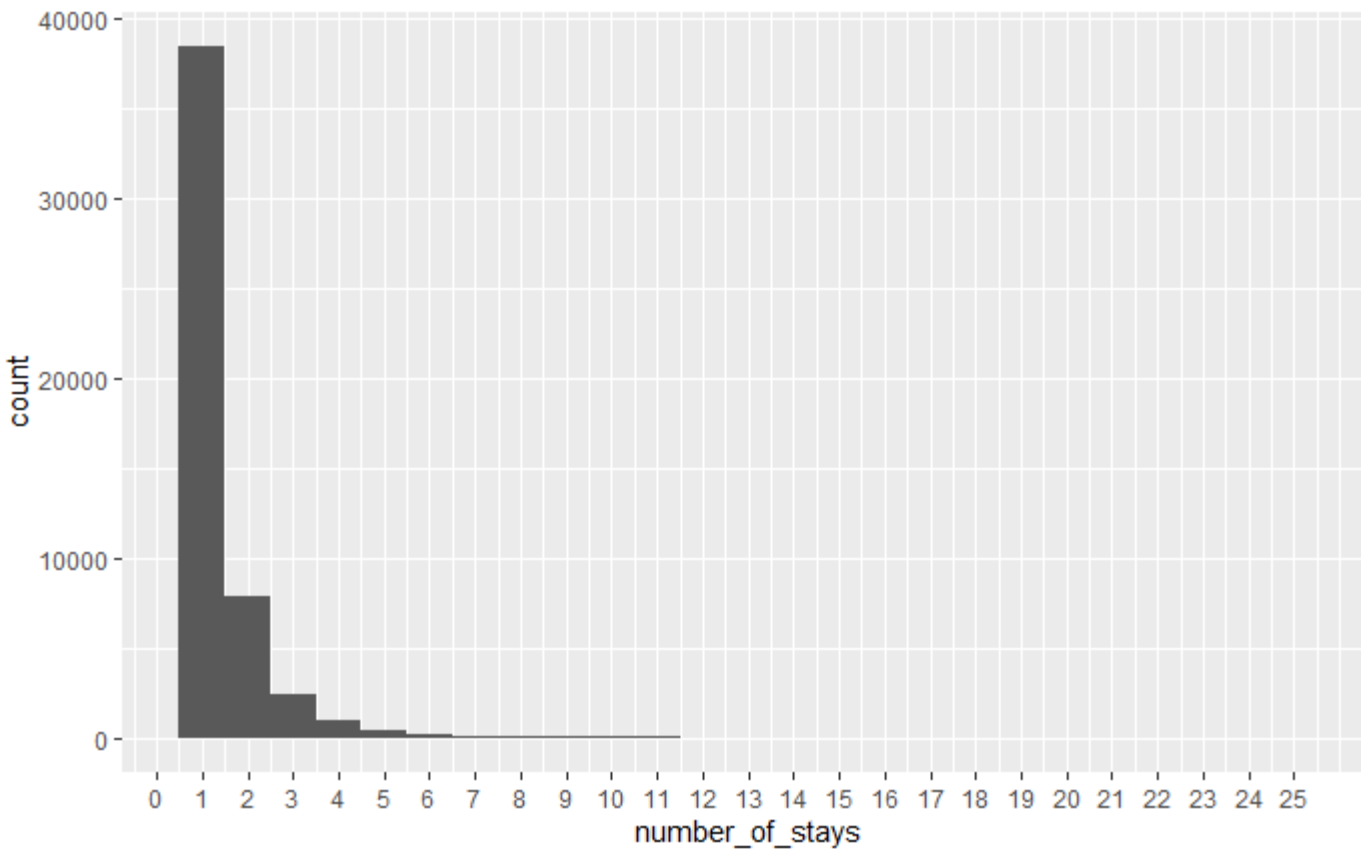


561  
562 **Figure S2.** Flow chart representing the selection of admissions included in the delirium logistic  
563 regression analysis for each vital sign. Admissions included in the delirium analysis were those

564 with a negative delirium assessment by CAM in the first 24 hours and a valid repeat CAM after  
565 that. Patients with multiple admissions fulfilling these criteria had one admission chosen at  
566 random.

567

568



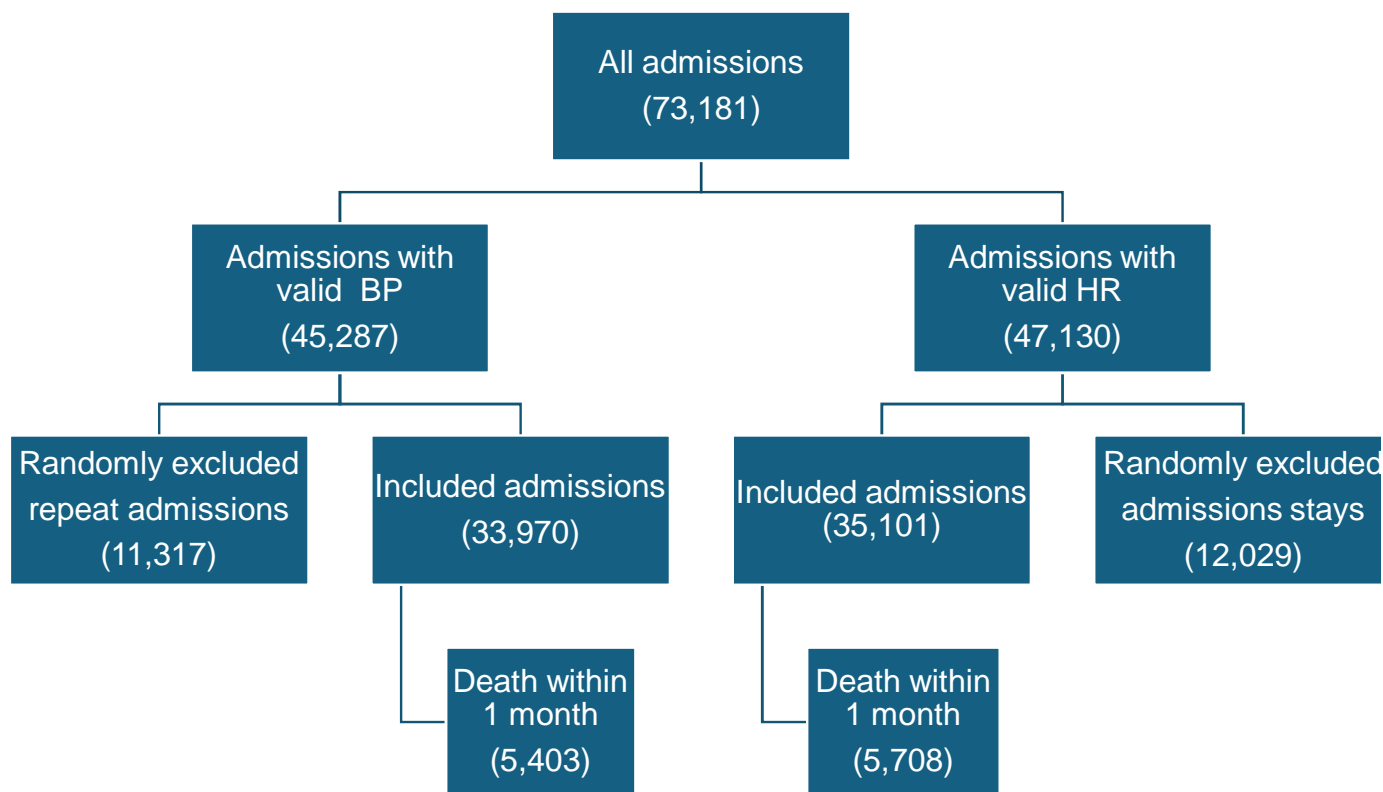
569

570 **Figure S3:** Histogram showing the distribution of patients across the number of admissions per  
571 patient.

572

573

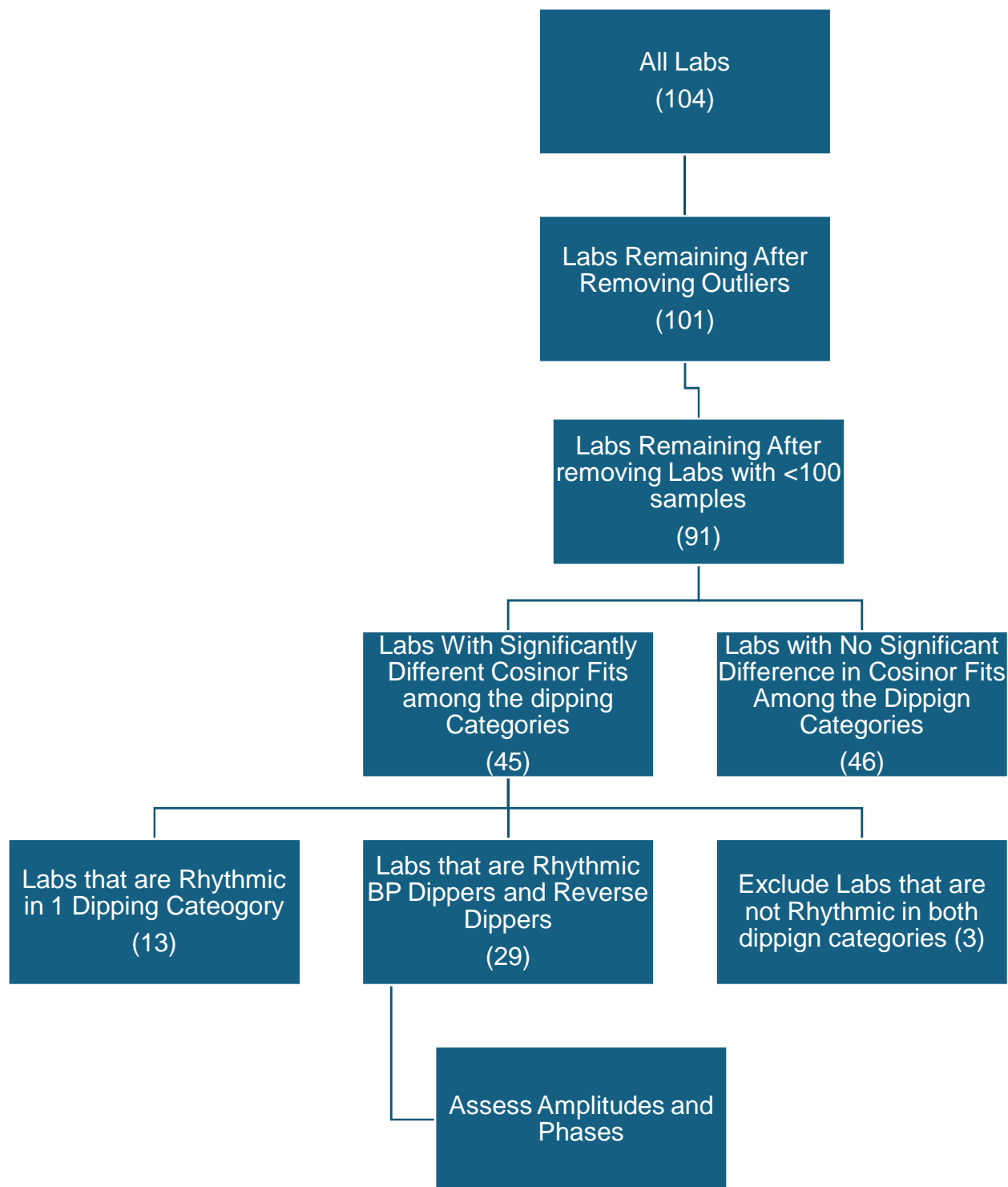
574



575

576 **Figure S4.** Flow chart representing the selection of admissions included in the 1-month mortality  
577 logistic regression analysis for each vital sign. Admissions included in the mortality analysis  
578 were those fulfilling our rhythm quality control criteria. Patients with multiple admissions  
579 fulfilling these criteria had one admission chosen at random.

580





582 **Figure S5:** Flow chart representing the analysis process of the clinical lab dataset. The  
583 corresponding results are shown in figures 3 and 4.  
584

585 **Supplementary Tables**

586 **Table S1** Amplitude quartiles and their corresponding minima and maxima

587

Vital Sign	Amplitude Quartile	Minimum Amplitude	Maximum Amplitude	Mean Amplitude	Amplitude SD
Blood Pressure (mmHg)	1	0.00	5.90	4.53	1.01
	2	5.91	8.40	7.10	0.64
	3	8.41	11.30	9.57	0.81
	4	11.31	48.79	15.36	4.26
Heart Rate (bpm)	1	0.00	3.50	2.20	0.83
	2	3.50	5.69	4.57	0.75
	3	5.70	8.49	7.19	0.79
	4	8.52	49.67	12.89	4.50

588

589

590 **Table S2: Numeric results of the delirium logistic regression models**  
 591 **represented graphically in figure 1**

vital_sign	parameter	estimate	p.value	q_value	odds_ratio	ci_lower	ci_upper
Blood Pressure	JTK p >0.05	0.172787	0.050074	0.237977	1.188613	0.999941	1.412884
Blood Pressure	JTK Amplitude Q2	-0.12145	0.215618	0.646854	0.885639	0.730755	1.073351
Blood Pressure	JTK Amplitude Q3	-0.07304	0.46304	0.69307	0.929562	0.764811	1.129802
Blood Pressure	JTK Amplitude Q4	-0.06572	0.504708	0.69307	0.936397	0.77198	1.13583
Blood Pressure	Dipping Ratio: Non-Dipper	0.003814	0.971714	0.971714	1.003821	0.81301	1.239416
Blood Pressure	Dipping Ratio: Reverse-Dipper	0.338238	0.001426	0.017109	1.402475	1.139259	1.726504
Heart Rate	JTK p >0.05	0.020002	0.768861	0.856442	1.020203	0.892788	1.165803
Heart Rate	JTK Amplitude Q2	-0.06324	0.519802	0.69307	0.938717	0.774282	1.138073
Heart Rate	JTK Amplitude Q3	-0.07962	0.454634	0.69307	0.923463	0.749503	1.137801
Heart Rate	JTK Amplitude Q4	-0.02941	0.785072	0.856442	0.97102	0.786024	1.199555
Heart Rate	Dipping Ratio: Non-Dipper	0.111901	0.290875	0.69307	1.118403	0.908687	1.376518
Heart Rate	Dipping Ratio: Reverse-Dipper	0.196836	0.059494	0.237977	1.217544	0.992148	1.494146

592

593

594 **Table S3: Numeric results of the mortality logistic regression models**  
 595 **represented graphically in Figure 2**

596

vital_sign	parameter	estimate	p.value	q_value	odds_ratio	ci_lower	ci_upper
Blood Pressure	JTK p >0.05	0.068902	0.108148	0.185397	1.071332	0.984957	1.165281
Blood Pressure	JTK Amplitude Q2	-0.06583	0.163673	0.21823	0.936287	0.853444	1.027171
Blood Pressure	JTK Amplitude Q3	-0.12083	0.013475	0.071496	0.886185	0.805193	0.975324
Blood Pressure	JTK Amplitude Q4	-0.04166	0.387489	0.387489	0.959197	0.872719	1.054245
Blood Pressure	Dipping Ratio: Non-Dipper	0.094311	0.072843	0.145687	1.098901	0.991301	1.218181
Blood Pressure	Dipping Ratio: Reverse-Dipper	0.125297	0.017874	0.071496	1.133485	1.021833	1.257337
Heart Rate	JTK p >0.05	-0.03946	0.231283	0.263046	0.961306	0.901156	1.02547
Heart Rate	JTK Amplitude Q2	-0.09864	0.037281	0.111844	0.906067	0.825741	0.994207
Heart Rate	JTK Amplitude Q3	-0.18568	0.000312	0.003748	0.830543	0.75079	0.918769
Heart Rate	JTK Amplitude Q4	-0.07606	0.134975	0.202462	0.926765	0.8388	1.023954
Heart Rate	Dipping Ratio: Non-Dipper	-0.05802	0.241125	0.263046	0.943629	0.856379	1.039767
Heart Rate	Dipping Ratio: Reverse-Dipper	-0.08966	0.068343	0.145687	0.914239	0.830209	1.006775

597

598 **Table S4: External csv file with all the statistics from the cosinor fits and rhythm**  
 599 **difference tests used to graph figures 3 and 4.**