

1 **Screening for Asymptomatic Tuberculosis among Adults with Household** 2 **Exposure to a Patient with Pulmonary Tuberculosis**

3
4 Simon C Mendelsohn^{#1}, Humphrey Mulenga^{#1}, Michele Tameris¹, Tumelo Moloantoa², Stephanus T
5 Malherbe³, Austin Katona⁴, Fernanda Maruri⁴, Firdows Noor³, Ravindre Panchia², Khuthadzo
6 Hlongwane², Kim Stanley³, Yuri F van der Heijden^{4,5}, Katie Hadley¹, Dominique T Ariefdien¹, Novel
7 N Chegou³, Gerhard Walzl³, Thomas J Scriba¹, Timothy R Sterling^{#4}, Mark Hatherill^{#1}, and the
8 RePORT South Africa Study Team*

9 10 **Author affiliations:**

11 ¹South African Tuberculosis Vaccine Initiative, Institute of Infectious Disease and Molecular Medicine
12 and Division of Immunology, Department of Pathology, University of Cape Town, Cape Town, South
13 Africa.

14 ²Perinatal HIV Research Unit, University of Witwatersrand, Johannesburg, South Africa.

15 ³DST/NRF Centre of Excellence for Biomedical TB Research; South African Medical Research
16 Council Centre for TB Research; Division of Immunology, Department of Biomedical Sciences,
17 Faculty of Medicine and Health Sciences, Stellenbosch University, Cape Town, South Africa.

18 ⁴Vanderbilt Tuberculosis Center, Vanderbilt University Medical Center, Nashville, TN, USA.

19 ⁵The Aurum Institute, Johannesburg, South Africa.

20
21 *Study Team members are listed in the Supplement.

22 [#]Contributed equally

23
24 **Corresponding author:** Simon C Mendelsohn

25 **Email:** Simon.Mendelsohn@uct.ac.za **Telephone:** +27 (0)21 406 6791

26 **Postal address:** South African Tuberculosis Vaccine Initiative, Institute of Infectious Disease and
27 Molecular Medicine and Division of Immunology, Department of Pathology, University of Cape Town,
28 Anzio Road, Observatory, 7935, Cape Town, South Africa.

29
30 **Keywords:** asymptomatic, tuberculosis, household, contacts, active case finding, screening

31
32 **Abstract word count:** 250

33 **Text word count:** 3,565

34 **References:** 30

35 **Tables:** 2

36 **Figures:** 4

NOTE: This preprint reports new research that has not been certified by peer review and should not be used to guide clinical practice.

1 **ABSTRACT**

2

3 **Background**

4 More than half of tuberculosis (TB) detected by community prevalence surveys is classified as
5 asymptomatic. We evaluated yield of symptom and chest radiograph (CXR) screening of TB-
6 exposed household contacts (HHC) in South Africa.

7

8 **Methods**

9 Adult volunteers (≥ 18 years) with household exposure to pulmonary TB patients were enrolled at
10 three sites. Systematic screening of TB symptoms (any duration), CXR (any abnormality), and
11 sputum microscopy, Xpert Ultra, and liquid culture were performed. Serum C-reactive protein (CRP)
12 was measured by multiplex bead array. Prevalent TB was microbiologically-confirmed (Xpert Ultra
13 or culture). Symptomatic and asymptomatic TB were defined as prevalent TB with and without
14 reported symptoms, respectively.

15

16 **Results**

17 Between March 2021 – December 2022, 979 HHC were enrolled; 185 (18.9%) living with HIV and
18 187 (19.1%) with previous TB. Prevalent TB occurred in 51 (5.2%) and was asymptomatic in 42/51
19 (82.4%). Only 13/42 (31.0%) asymptomatic TB cases were smear-positive [8/13 (61.5%) graded
20 scanty or 1+]. CRP did not discriminate healthy HHC from those with asymptomatic TB (AUC 0.60;
21 95%CI 0.47–0.73). An abnormal CXR was observed in 23/41 asymptomatic (sensitivity 56.1%,
22 95%CI 41.0–70.1%) versus 8/9 symptomatic (sensitivity 88.9%, 95%CI 56.5–98.0%) TB cases.
23 Sensitivity of CXR in combination with symptom screening was 64.0% (32/50, 95%CI 50.1–75.9%)
24 for all prevalent TB.

25

26 **Conclusions**

27 More than 80% of confirmed TB cases among HHC were asymptomatic. CXR screening missed
28 more than 40% of these asymptomatic cases. Community prevalence surveys reliant on symptom-
29 and CXR-based approaches may significantly underestimate the prevalence of asymptomatic TB in
30 endemic countries.

31

32 **Funding**

33 Supported by RePORT South Africa through funding from the U.S. National Institutes of Health,
34 CRDF Global, and the South African Medical Research Council.

1 **RESEARCH IN CONTEXT**

2

3 **Evidence before this study**

4 World Health Organisation (WHO) guidelines for systematic tuberculosis (TB) screening recommend
5 symptom screening and chest radiography (CXR), based on a Cochrane meta-analysis reporting
6 70.6% sensitivity (any TB symptom) and 94.7% sensitivity (any CXR abnormality) for
7 bacteriologically-confirmed pulmonary TB. National TB prevalence surveys rely on a positive
8 symptom screen or abnormal CXR to trigger diagnostic sputum testing. This approach to community
9 screening would, by definition, miss asymptomatic TB cases without CXR evidence of disease.

10

11 We reviewed the reference list of the aforementioned meta-analysis for active case-finding studies
12 of adolescents and adults aged 15 years and older in community and contact-tracing settings. We
13 performed forward citation-tracking and searched reference lists, including studies published in
14 English between Jan 1, 1980, and November 1, 2024. We excluded studies that included children
15 <15 years; or that exclusively enrolled people with additional risk factors (HIV; diabetes; latent TB
16 infection; prior TB). We found 28 studies that performed universal sputum testing for
17 bacteriologically-confirmed pulmonary TB and reported 51.8% (95%CI 49.9–53.7%; $I^2 = 89.2\%$)
18 pooled sensitivity for symptom screening (any symptom; 24 studies, 2,969 TB cases) and 62.4%
19 (95%CI 59.3–65.3%; $I^2 = 88.3\%$) pooled sensitivity for CXR (any abnormality; 10 studies, 1,123 TB
20 cases). Only four studies (145 TB cases) reported accuracy of symptom screening in parallel with
21 chest radiography (pooled sensitivity 67.3%, 95%CI 57.3–75.9%; $I^2 = 87.1\%$), but these studies did
22 not disaggregate symptomatic and asymptomatic disease.

23

24 **Added value of this study**

25 We performed systematic screening using universal sputum microbiological testing of 978 household
26 contacts of pulmonary TB patients in three South African communities and compared symptom (any
27 duration) and CXR (any abnormality) screening approaches against a microbiological reference
28 standard. We detected confirmed pulmonary TB in 5.2% of household contacts, and 82.4% of these
29 TB cases reported no TB symptoms. Asymptomatic TB in household contacts was pauci-bacillary
30 and associated with low serum CRP levels that were indistinguishable from healthy controls, but
31 distinct from symptomatic TB in a comparator group of clinic attendees. Sensitivity of CXR screening
32 for asymptomatic TB was only 56.1%; sensitivity of combined symptom and CXR screening for all
33 TB was marginally higher at 64.0%.

34

35 **Implications of all the available evidence**

36 Our findings from household contacts suggest that symptom- and CXR-based approaches are
37 inadequate for community TB screening in South Africa and do not meet the WHO Target Product
38 Profile for a TB screening test (minimum 90% sensitivity; 70% specificity). National TB Prevalence
39 Surveys that omit universal sputum microbiological testing may significantly underestimate the
40 prevalence of asymptomatic TB in high-burden countries.

41

1 INTRODUCTION

2

3 Approximately 2.7 million (25%) of the estimated 10.8 million global tuberculosis (TB) cases went
4 undiagnosed or untreated in 2023.¹ To decrease *Mycobacterium tuberculosis* (*Mtb*) transmission
5 and reduce the global burden of TB disease, it is necessary to find and treat these so-called “missing
6 millions”. However, more than half of all TB found in community TB prevalence surveys has been
7 classified as asymptomatic^{2,3}—occurring in persons who do not have, recognise, or report typical TB
8 symptoms such as cough, fever, night sweats, and loss of weight.⁴

9

10 The World Health Organisation (WHO) has recently recognised the importance of asymptomatic
11 (previously “subclinical”) TB for disease transmission and is currently reviewing its guidance to
12 determine programmatic implications.⁵ In mathematical models an estimated 50% of asymptomatic
13 TB cases will never develop symptoms and recover, but left untreated, the other 50% remain
14 infectious, and at risk of progression to symptomatic TB disease and death.⁶ Despite purportedly
15 being less infectious, epidemiological and modelling studies suggest that asymptomatic TB is
16 responsible for a greater share of transmission than symptomatic disease, due to longer duration of
17 exposure before treatment.⁷⁻⁹

18

19 It follows that finding and treating asymptomatic TB in the community is important, but, by definition,
20 individuals with asymptomatic TB would not be detected by symptom-triggered TB surveillance. New
21 tools are needed for community TB screening. Since ascertainment of symptoms is subjective,
22 health-seeking behaviour may be a more important determinant of diagnostic performance than
23 simply the presence or absence of symptoms. It remains to be shown whether tools developed for
24 triage of clinic attendees with symptomatic TB would perform similarly for community screening of
25 asymptomatic TB, which is likely less severe.

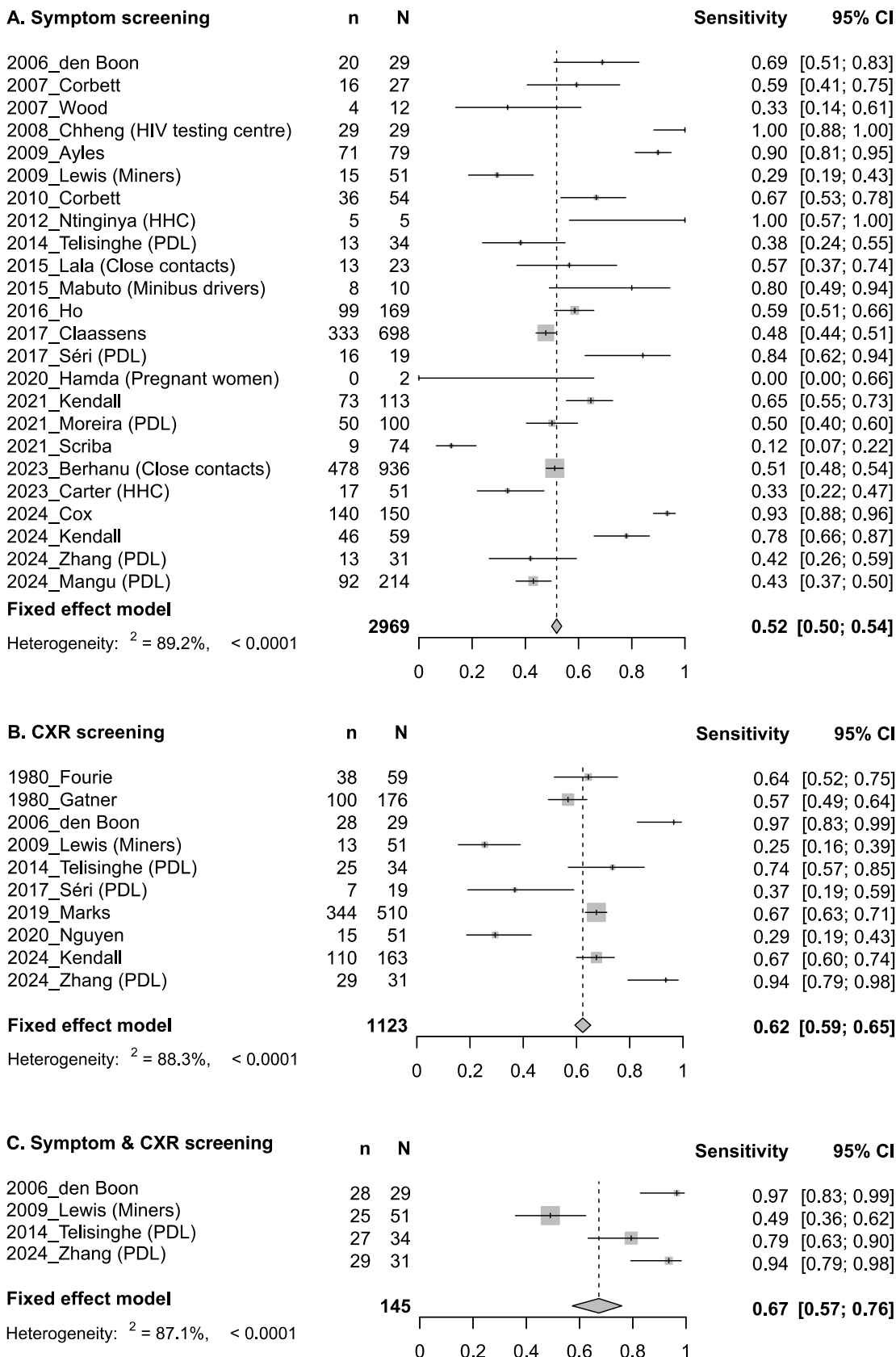
26

27 Most active case-finding studies, prevalence surveys, and public health programmes rely on
28 symptom and/or chest radiographic (CXR) screening,^{2,3,10} to prioritise resources for diagnostic
29 sputum testing. World Health Organisation (WHO) guidelines¹¹ also recommend symptom and CXR
30 screening, based on a Cochrane meta-analysis reporting 70.6% sensitivity (any TB symptom) and
31 94.7% sensitivity (any CXR abnormality) for bacteriologically-confirmed pulmonary TB.¹⁰ However,
32 these data are primarily derived from national TB prevalence surveys, which rely on a positive
33 symptom screen or abnormal CXR to trigger diagnostic sputum testing, and would miss
34 asymptomatic TB cases without CXR evidence of disease.

35

36 Review of evidence before this study showed 51.8% (95%CI 49.9–53.7%; $I^2 = 89.2\%$) pooled
37 sensitivity for symptom screening (any symptom; 24 studies, 2,969 TB cases) and 62.4% (95%CI
38 59.3–65.3%; $I^2 = 88.3\%$) pooled sensitivity for CXR (any abnormality; 10 studies, 1,123 TB cases)
39 in studies that performed universal sputum testing for bacteriologically-confirmed pulmonary TB

1 (references in **Supplement**). Only four studies (145 TB cases) reported accuracy of symptom
2 screening in parallel with chest radiography (pooled sensitivity 67.3%, 95%CI 57.3–75.9%; $I^2 =$
3 87.1%), but these studies did not disaggregate symptomatic and asymptomatic disease (**Figure 1**).
4
5 We aimed to understand the burden of asymptomatic TB disease among TB-exposed household
6 contacts (HHC) in communities in South Africa; and to evaluate the yield of systematic screening
7 using universal sputum microbiological testing, symptomatology, and CXR.



1

2 **Figure 1. Sensitivity of symptom and chest radiography (CXR) screening for tuberculosis (TB) with**
 3 **universal sputum microbiological testing irrespective of presence of symptoms or CXR abnormality.**

4 Forest plot of sensitivity of (A) symptom screening, (B) CXR, and (C) parallel symptom and CXR screening for
 5 TB reported in the literature. Cohorts are listed by year of publication and first author. HHC, household
 6 contacts. PDL, people deprived of liberty.

1 **METHODS**

2

3 *Study design and participants*

4 The Regional Prospective Observational Research for Tuberculosis (RePORT) South Africa network
5 enrolled participants in a prospective observational cohort study at three centres in South Africa
6 (Worcester and Ravensmead, Western Cape Province; Soweto, Gauteng Province). Adults (≥ 18
7 years) had recent household exposure within the past six months to an adult index case with
8 untreated or inadequately treated pulmonary TB. Exposure was defined as sleeping in the same
9 household, or more than four hours of other household exposure per week. Participants were
10 excluded if they were unlikely to attend study visits, or had any condition that might interfere with
11 their ability to provide informed consent or adhere to study requirements, including alcohol or drug
12 dependence and incarceration.

13

14 Symptom screening, CXR, and spontaneously expectorated sputum collection for Xpert Ultra
15 (Cepheid, CA, USA), liquid culture (Mycobacteria Growth Indicator Tube [MGIT], BACTEC, Beckton
16 Dickinson, NJ, USA), and acid-fast microscopy, were performed at a baseline visit for all HHC,
17 regardless of symptoms. A participant was classified symptomatic if they reported one or more of
18 cough, fever, weight loss, fatigue, night sweats, pleuritic chest pain, or haemoptysis, for any duration.
19 CXR were read once by an investigator at each site using a standardised form and recorded as
20 normal or abnormal, based on absence or presence of any cavitation, opacity, mediastinal or hilar
21 adenopathy, pleural effusion, bronchiectasis, or collapsed lung.

22

23 The microbiological reference standard (MRS) for microbiologically-confirmed pulmonary TB
24 disease was at least one sputum specimen positive by MGIT culture or Xpert Ultra (excluding trace
25 positive results). Sputum induction was not performed as it is not the current standard of care in
26 South Africa. Participants who were unproductive of sputum, or with Xpert Ultra trace positive result
27 only, were considered sputum-negative in the primary analysis. Participants who, after investigation
28 for TB at baseline, were not confirmed by positive sputum MGIT culture or Xpert Ultra, were defined
29 as controls for the purpose of diagnostic analyses. The definition of prevalent TB was restricted to
30 cases diagnosed on sputum samples collected at the baseline visit. Symptomatic and asymptomatic
31 TB were defined as microbiologically-confirmed prevalent TB with or without reported symptoms of
32 any duration, respectively. All participants diagnosed with TB disease were referred for treatment.

33

34 *Measurement of C-reactive protein (CRP)*

35 CRP was measured in HHC, and in a cohort of symptomatic clinic attendees recruited
36 contemporaneously by the RePORT South Africa network (described in the **Supplement**). This
37 exploratory analysis aimed to understand interactions between symptomatology and health-seeking
38 behaviour. CRP was measured using a multiplex bead array in cryopreserved serum samples to
39 differentiate asymptomatic TB from asymptomatic controls among HHC; and symptomatic TB from

1 symptomatic controls among clinic attendees. Briefly, serum samples were collected at baseline,
2 prior to TB diagnosis, and cryopreserved in 607 adults (≥ 18 years) self-presenting to clinics with
3 presumptive TB (199 sputum microbiologically-confirmed symptomatic pulmonary TB; 408
4 symptomatic controls with negative sputum culture and Xpert Ultra) at five sites in South Africa.
5 Samples were later thawed and assayed using multiplex bead array (Bio-Plex Pro Human
6 Apolipoprotein 10-plex Assay Panel, BioRad) on the Bio Plex platform (Bio Plex, Bio Rad
7 Laboratories, CA, USA) as previously described.¹²

8

9 *Statistical analysis*

10 Analyses were performed using Stata (version 16.1, StataCorp, TX, USA) and R (version 4.4.1).
11 Sensitivity, specificity, and area under the curve (AUC) were calculated using standard methods.
12 Confidence intervals for diagnostic accuracy measures were calculated with the Wilson method and
13 DeLong method for AUC. The number needed to test (NNT) with a confirmatory test to diagnose
14 one TB case is calculated as the number of confirmatory tests divided by the number of true positives
15 with the screening approach. CRP concentrations were censored at 150 mg/dL.

16

17 *Ethical approval*

18 The study protocol was approved by the institutional research ethics committees at each participating
19 South African site and at Vanderbilt University Medical Center, USA. All participants provided written,
20 informed consent prior to participation.

21

22 *Role of the funding source*

23 The funders had no role in study design, data collection, analysis, interpretation, decision to publish,
24 or preparation of the manuscript.

1 **RESULTS**

2

3 *Recruitment and baseline status of participants*

4 Between March 2021 and December 2022, 1,001 HHC were screened and 979 enrolled (**Figure 2**).

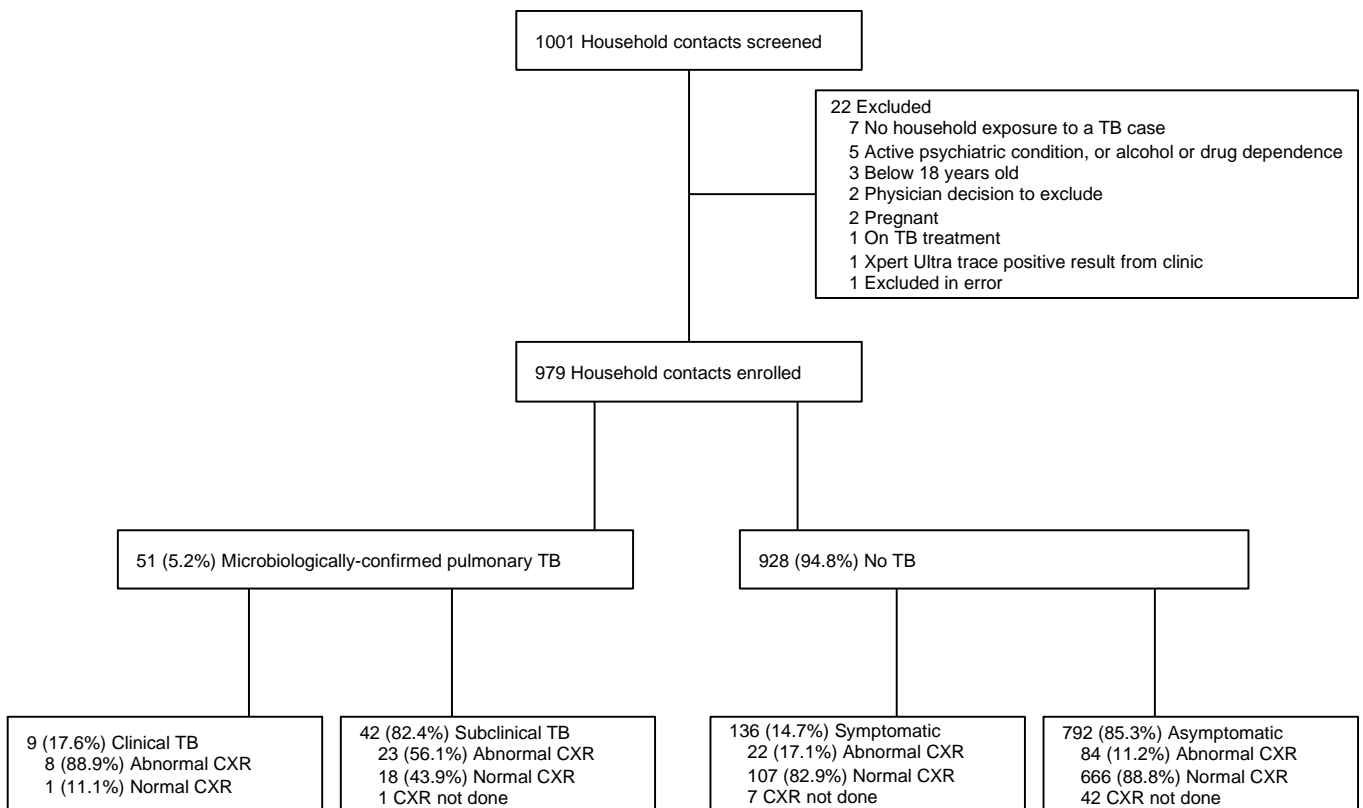
5 Most common reasons for exclusion included insufficient exposure to an index TB case (n=7), active
6 psychiatric condition, or alcohol or drug dependence (n=5), and other miscellaneous reasons (n=10;
7 **Figure 2**). Of the 979 HHC enrolled, 345 (35.2%) were male, median age was 34.8 years
8 (interquartile range, IQR 25.4–48.2), 185 (18.9%) were living with HIV, 187 (19.1%) had known
9 previous TB, and 834 (85.2%) were asymptomatic (**Table 1**).

10

11 Most participants (962/979; 98.3%) were able to provide a spontaneous expectorated sputum
12 sample for testing. Prevalent, microbiologically-confirmed, pulmonary TB disease was diagnosed in
13 51/979 (5.2%) participants: 30 (58.8%) by sputum Xpert Ultra and MGIT culture, 13 (25.5%) by
14 sputum MGIT culture alone, and 8 (15.7%) by sputum Xpert Ultra alone. Among those diagnosed by
15 Xpert Ultra alone, 62.5% (5/8) had a previous TB episode, two of which occurred within the preceding
16 three years (1.4 and 1.9 years).

17

18



19

20

21 **Figure 2. Study flow diagram.**

22 TB, tuberculosis. CXR, Chest radiograph.

1 **Table 1. Characteristics of the study population by TB phenotype.**

2

	Total (N=979)	Asymptomatic HHC with TB disease (N=42)	Symptomatic HHC with TB disease (N=9)	Asymptomatic HHC without TB (N=792)	Symptomatic HHC without TB (N=136)
Median age (IQR)	34.8 (25.4–48.2)	35.8 (25.8–49.3)	40.3 (31.7–49.6)	33.3 (24.7–45.8)	43.4 (32.0–53.8)
Male sex, n (%)	345 (35.2)	21 (50.0)	4 (44.4)	269 (34.0)	51 (37.5)
Ancestry, n (%)					
Black African	463 (47.3)	6 (14.3)	3 (33.3)	349 (44.1)	105 (77.2)
Mixed ancestry	512 (52.3)	36 (85.7)	6 (66.7)	439 (55.4)	31 (22.8)
Caucasian	4 (0.4)	0	0	4 (0.5)	0
History of smoking, n (%)					
Never	410 (41.9)	10 (23.8)	1 (11.1)	340 (43.0)	59 (43.4)
Current smoker	515 (52.6)	30 (71.4)	6 (66.7)	414 (52.3)	65 (47.8)
Former smoker	54 (5.5)	2 (4.8)	2 (22.2)	38 (4.8)	12 (8.8)
History of drug use, n (%)	129 (13.2)	11 (26.2)	3 (33.3)	98 (12.4)	17 (12.5)
Prior TB, n (%)	187 (19.1)	13 (31.0)	4 (44.4)	134 (16.9)	36 (26.5)
HIV positive, n (%)	185 (18.9)	7 (16.7)	2 (22.2)	129 (16.3)	47 (34.6)
Chest radiography, n (%)					
Normal	792/929 (85.3)	18/41 (43.9)	1/9 (11.1)	666/750 (88.8)	107/129 (82.9)
Any abnormality suggestive of TB	137/929 (14.7)	23/41 (56.1)	8/9 (88.9)	84/750 (11.2)	22/129 (17.1)
Not done	50	1	0	42	7
Median persons in household (IQR)	6 (4–8)	6 (4–9)	6 (3–8)	6 (4–8)	5 (4–7)
Study site, n (%)					
Ravensmead	167 (17.1)	6 (14.3)	0 (0)	160 (20.2)	1 (0.7)
Worcester	447 (45.7)	29 (69.0)	6 (66.7)	382 (48.2)	30 (22.1)
Soweto	365 (37.3)	7 (16.7)	3 (33.3)	250 (31.6)	105 (77.2)
TB symptoms, n (%)	145 (14.8)	0	9 (100)	0	136 (100)
Chest pain	35 (3.6)	0	4 (44.4)	0	31 (22.8)
Cough	104 (10.6)	0	8 (88.9)	0	96 (70.6)
Fever	36 (3.7)	0	1 (11.1)	0	35 (25.7)
Fatigue	24 (2.5)	0	5 (55.6)	0	19 (14.0)
Loss of weight	57 (5.8)	0	6 (66.7)	0	51 (37.5)
Night sweats	39 (4.0)	0	6 (66.7)	0	33 (24.3)
Microbiological confirmation, n (%)					
Smear positive	24 (2.5)	13 (31.0)	4 (44.4)	5 (0.6) ^a	2 (1.5) ^a
Scanty or 1+	15 (1.5)	8 (19.0)	1 (11.1)	4 (0.5) ^a	2 (1.5) ^a
2+	7 (0.7)	4 (9.5)	2 (22.2)	1 (0.1) ^a	-
3+	2 (0.2)	1 (2.4)	1 (11.1)	-	-
Culture positive	43 (4.4)	35 (83.3)	8 (88.9)	-	-
Time to positivity (days)	14 (7–18)	14 (7–17)	12 (9–18)	-	-
Xpert Ultra positive	47 (4.8)	35 (83.3)	9 (100)	3 (0.4) ^a	0
Trace ^a	9 (0.9)	5 (11.9)	1 (11.1)	3 (0.4) ^a	0
Very low	12 (1.2)	10 (23.8)	2 (22.2)	-	-
Low	10 (1.0)	8 (19.0)	2 (22.2)	-	-
Medium	6 (0.6)	4 (9.5)	2 (22.2)	-	-
High	10 (1.0)	8 (19.0)	2 (22.2)	-	-

3

4

5

^a Reference standard for above analysis is positive sputum culture or Ultra, excluding trace positive.
HHC, household contact. IQR, interquartile range. TB, tuberculosis.

1 *Most TB diagnosed among household contacts was asymptomatic*

2 The majority (42/51; 82.4%, 95%CI 69.7–90.4%) of prevalent TB cases did not report TB symptoms
3 of any duration and were classified as asymptomatic. Among asymptomatic TB cases, 31.0% (13/42)
4 reported a previous TB episode, seven of which occurred within the preceding three years, and
5 76.2% (32/42) were current or former smokers.

6
7 CXR was performed in 97.6% (41/42) of asymptomatic TB cases, among whom an abnormal CXR
8 was observed in 56.1% (23/41; 95%CI 41.0–70.1%); of whom 39.1% (9/23) reported a prior TB
9 history. Conversely, an abnormal CXR was observed in 88.9% (8/9; 95%CI 56.5–98.0%) of
10 symptomatic TB cases (difference in proportions 32.8%, 95%CI -2.5–50.4%); and 12.1% (106/879;
11 95%CI 10.1–14.4%) of all controls without TB. No CXR abnormality was observed in 43.9% (18/41;
12 95%CI 29.9–59.0%) of asymptomatic TB cases.

13
14 *Asymptomatic TB was associated with low sputum bacillary load*

15 Only 13/42 (31.0%) asymptomatic TB cases were sputum smear microscopy positive; most (8/13,
16 61.5%) were graded scanty or 1+. Similarly, most of the 35/42 (83.3%) Xpert Ultra positive
17 asymptomatic TB cases occurred in the “trace” (not included in MRS) and “very low” semi-
18 quantitative categories (15/35, 42.9%), with 8 (22.9%), 4 (11.4%), and 8 (22.9%) additional cases
19 graded “low”, “medium”, and “high”, respectively. Median time-to-culture-positivity for asymptomatic
20 TB cases was 14 (IQR 7–17) days.

21
22 Symptomatic TB cases had a slightly higher rate of sputum smear microscopy positivity (4/9, 44.4%)
23 with fewer graded as scanty or 1+ (1/4, 25.0%); a higher rate of Xpert Ultra positivity (9/9, 100%)
24 with fewer graded semi-quantitatively as “trace” or “very low” (3/9, 33.3%); and shorter MGIT culture
25 time-to-positivity (12 days, IQR 8–18). However, there were few symptomatic TB cases and thus
26 differences compared to asymptomatic TB were not formally tested.

27
28 Seven asymptomatic TB cases (7/42, 16.7%) were diagnosed by Xpert Ultra alone (MGIT culture
29 negative), only two of whom had a previous TB episode within the prior three years (1.4 and 1.8
30 years). There were also three asymptomatic HHC with negative MGIT culture and trace positive
31 Xpert Ultra results (not included in the MRS); 2/3 (33.3%) of whom had a known prior TB episode
32 within the preceding three years.

33
34 Fifteen of the 18 (83.3%) asymptomatic TB cases without CXR abnormality suggestive of TB were
35 sputum MGIT culture positive, with longer median MGIT culture time-to-positivity of 16 days (IQR
36 10–19), very low Xpert Ultra semi-quantitative *Mtb* load (5/15 negative, 6/15 “trace” or “very low”,
37 and 2/15 “low”, 2/15 “medium” or “high”), and 11/15 (73.3%) were smear negative. The three MGIT
38 culture negative asymptomatic CXR negative participants all had “very low” semi-quantitative Xpert

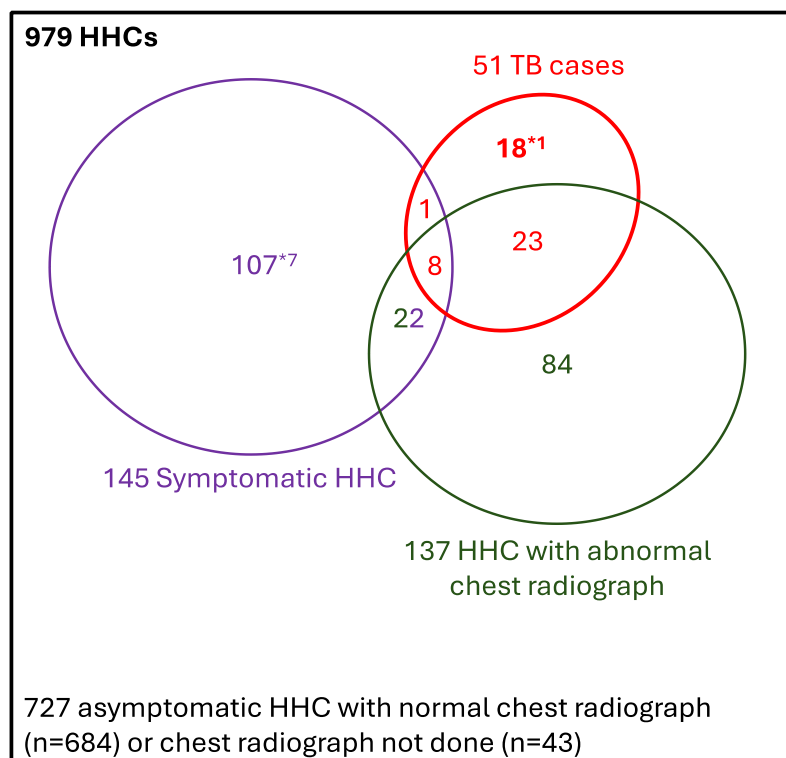
1 Ultra results, and negative sputum smears; Two of the three had prior TB episodes, both more than
2 three years prior.

3

4 *Incremental yield of screening and number needed to test to diagnose one case of TB*

5 Universal sputum microbiological testing detected 18 asymptomatic TB cases (18/51; sensitivity
6 35.3%, 95%CI 23.6–49.0%) that would have been missed by symptom- and CXR-triggered
7 investigation for TB (**Figure 3**), increasing yield by 54.5% (18/33; 95%CI 38.0–70.2%).

8



9

10 **Figure 3. Venn diagram demonstrating yield of symptom screening and chest radiography (CXR) for**
11 **detection of pulmonary tuberculosis (TB) among household contacts (HHC).**

12 *There were 7 symptomatic HHC without TB and 1 asymptomatic HHC with TB who did not have CXR.

13

14 Universal testing of HHC with both sputum Xpert Ultra and MGIT culture (MRS) required 19.2 (95%CI
15 14.7–25.1) confirmatory tests to diagnose one case of TB. We explored the incremental yield
16 (sensitivity) and number of confirmatory tests needed to diagnose one TB case for different
17 screening strategies (**Table 2**). A symptom screening approach with sensitivity 17.6% (95%CI 9.6–
18 30.3%) would have missed 42/51 TB cases (82.4%, 95%CI 69.7–90.4%). CXR screening with
19 sensitivity 62.0% (95%CI 48.2–74.1) would have missed 19/50 (38.0%, 95%CI 25.9–51.8%) of all
20 TB cases, but reduced the number of confirmatory tests needed to diagnose one TB case to 7.7
21 (5.6–10.6) with, or 4.4 (3.3–6.1) without, parallel symptom screening, respectively. The addition of
22 symptom screening in parallel to CXR screening marginally increased sensitivity to 64.0% (95%CI
23 50.1–75.9%). However, among asymptomatic HHC, CXR screening with sensitivity 56.1% (95%CI
24 41.0–70.1%) would have missed 18/41 (43.9%, 95%CI 29.9–59.0%) of asymptomatic TB cases.

1 **Table 2. Comparison of yield and number needed to test of different TB screening approaches for**
 2 **detection of TB cases among household contacts of index TB cases.**

Initial screening approach	Number of participants included in analysis	Number of positive screening tests (%)	Number of TB cases diagnosed (sensitivity, 95% CI) ^a	NNT with confirmatory tests to diagnose 1 case (95% CI)
No screening; MRS for all ^a	979	979 (100%)	51/51 (100%, 93.0–100)	19.2 (14.7–25.1)
Symptom screening ^b	979	145 (14.8%)	9/51 (17.6%, 9.6–30.3)	16.1 (8.8–30.3)
CXR screening ^c	929 ^e	137 (14.7%)	31/50 (62.0%, 48.2–74.1)	4.4 (3.3–6.1)
Parallel symptom and CXR screening ^d	929 ^e	245 (26.4%)	32/50 (64.0%, 50.1–75.9)	7.7 (5.6–10.6)
CXR screening among asymptomatic participants	791 ^f	107 (13.5%)	23/41 (56.1%, 41.0–70.1)	4.7 (3.3–6.8)

4
5 ^a Microbiological reference standard (MRS) is positive sputum culture or Xpert Ultra, excluding Trace positive results.

6 ^b Any symptom of any duration.

7 ^c Any chest radiography (CXR) abnormality.

8 ^d Any symptom of any duration or any CXR abnormality.

9 ^e 50 participants without CXR, including 1 asymptomatic TB case, were excluded.

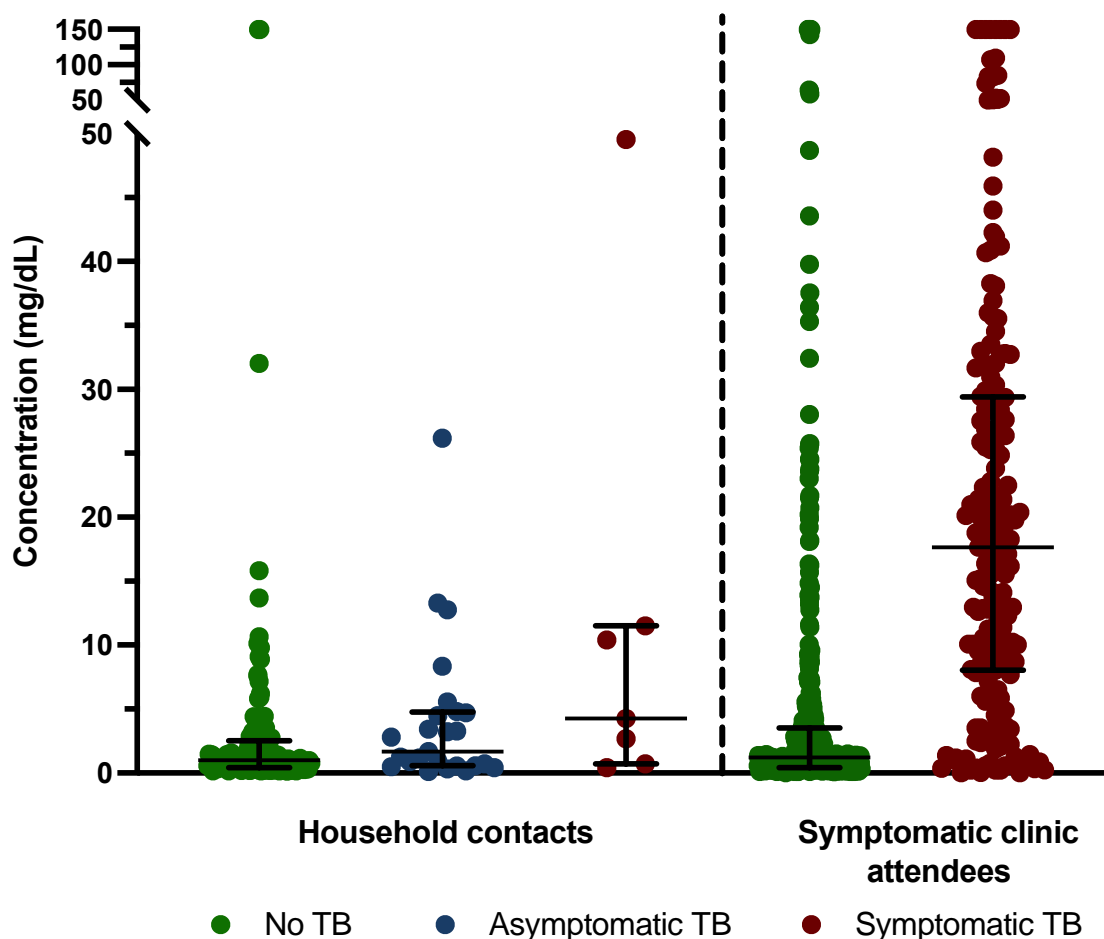
10 ^f 43 asymptomatic participants without CXR, including 1 asymptomatic TB case, were excluded.

11
12 NNT, number needed to test.

13
14 *C-reactive protein has low accuracy for TB screening among exposed household contacts*

15 CRP was measured in a subset of 25 asymptomatic and 7 symptomatic pulmonary TB cases and
 16 126 healthy HHC from this cohort; and 607 symptomatic adults presenting to clinic with TB symptoms
 17 (199 symptomatic pulmonary TB cases and 408 symptomatic controls without TB). CRP
 18 concentrations appeared higher among symptomatic TB cases (median 17.8 mg/dL, IQR 8.1–29.4)
 19 presenting for healthcare than in symptomatic TB cases detected among HHC (median 4.3 mg/dL,
 20 IQR 1.7–11.0; **Figure 4**).

21
22 CRP was able to differentiate symptomatic clinic attendees with and without symptomatic TB (AUC
 23 0.84, 95%CI 0.81–0.88), and HHC with and without symptomatic TB (AUC 0.74, 95%CI 0.52–0.96),
 24 but was not able to discriminate between HHC with asymptomatic TB disease from those without TB
 25 (AUC 0.60, 95%CI 0.47–0.73). Sensitivity of CRP for diagnosing asymptomatic TB among HHC was
 26 48.0% (95%CI 30.0–66.5%) when specificity was set at 70% per WHO Target Product Profile
 27 minimum screening test criteria¹³. Conversely, with sensitivity set at 90%, specificity was 19.0%
 28 (95%CI 13.1–26.8%).



1
2

3 **Figure 4. C-reactive protein (CRP) is unable to differentiate asymptomatic tuberculosis (TB) cases from**
4 **asymptomatic household contacts (HHC) without TB.**

5 CRP concentration measured by multiplex bead array in a subset of 25 asymptomatic and 7 symptomatic
6 pulmonary TB cases, and 126 healthy HHC, from this cohort, and 607 symptomatic adults presenting to clinic
7 with TB symptoms (199 symptomatic pulmonary TB and 408 without TB). CRP concentrations were censored
8 at 150 mg/dL. Each dot represents one participant. Boxes depict the IQR, the midline represents the median
9 (shown), and the whiskers indicate the IQR \pm (1.5 \times IQR).

1 DISCUSSION

2

3 We aimed to understand the burden and clinical characteristics of asymptomatic TB among TB-
4 exposed HHC in three communities in South Africa, and to measure the yield of universal symptom,
5 CXR, and sputum screening. We found 5.2% TB prevalence among HHC, which is more than 6-fold
6 higher than the community rate reported in the South African national TB prevalence survey.² We
7 have shown that reliance on symptom screening to trigger diagnostic TB investigation would have
8 missed 82.4% of microbiologically-confirmed, asymptomatic TB cases in this cohort, in keeping with
9 similar studies conducted in the community.¹⁴ The yield of asymptomatic TB cases (n=42; 82.4%)
10 detected by active screening of all exposed HHC, regardless of presence of symptoms, was 4.7-fold
11 that of symptomatic TB cases (n=9; 17.6%). This ratio is consistent with modelling estimates of
12 household *Mtb* exposure and infection occurring within the preceding 6–12 months.¹⁵

13

14 The yield of CXR screening for all TB, alone or in combination with symptom screening, was low —
15 62.0% and 64.0%, respectively. The observed sensitivity of CXR screening for all TB among HHC
16 was considerably lower than the 94.7% expected by WHO, but is consistent with the pooled 62.4%
17 sensitivity derived from review of community-based screening studies (**Figure 1**). It is also notable
18 that 43.9% of asymptomatic TB cases with normal CXR would have been missed by traditional
19 screening methods. Stuck and colleagues modelled the prevalence of asymptomatic pulmonary TB
20 in adults in community settings, and estimated even lower CXR sensitivity of 25% among individuals
21 with no cough.¹⁶

22

23 The universal TB sputum screening methodology employed in this study detected 54.5% more TB
24 cases than would a parallel symptom- and CXR-triggered approach, such as that adopted by the
25 South African national TB prevalence survey.² Extrapolating our findings among HHC in three TB-
26 endemic communities to the South Africa-wide population survey, which observed a
27 microbiologically-confirmed pulmonary TB prevalence of 852 cases (95%CI 679–1026) per 100 000
28 population, the true prevalence of microbiologically-confirmed asymptomatic TB cases, including
29 CXR-negative cases, might be as high as 1,331 (95%CI 1061–1603) per 100 000 population. If these
30 findings from South Africa are replicated in other high TB burden countries in which national
31 prevalence surveys omitted universal sputum microbiological testing of symptom- and chest
32 radiograph-negative persons, it is likely that the global burden of asymptomatic TB has been
33 significantly under-estimated. The screening approach also has implications for TB control. The
34 TREATS and SCALE community-based, cluster-randomised studies^{17,18} used symptom and CXR
35 screening, but failed to show impact on TB incidence.¹⁹ Conversely, the ACT3 Study in Vietnam
36 performed universal TB sputum Xpert testing and demonstrated a reduction in incidence.^{19,20}
37 Incomplete treatment of asymptomatic TB cases in the absence of universal sputum testing might
38 explain this difference in outcome.

39

1 Our finding that symptom- and CXR-screening tools, developed for triage of symptomatic TB patients
2 seeking care, perform poorly as screening tests for asymptomatic TB in the community, is mirrored
3 by our findings for CRP, which has recently been recommended by the WHO as a TB screening tool
4 for people living with HIV.¹¹ Recent studies have demonstrated promising performance of CRP for
5 TB triage among symptomatic adults and individuals attending outpatient clinics.^{21,22} However, in our
6 exploratory analysis, serum CRP levels were lower among TB cases among HHC in the community
7 compared to TB cases presenting to clinics, in keeping with the study by Kendall and colleagues.²³
8 Our findings also mirror those of Ruperez et al;²⁴ CRP did not significantly differentiate asymptomatic
9 TB from asymptomatic HHC without TB, suggesting that CRP would not be appropriate as a
10 screening test in a community setting.

11
12 Asymptomatic TB cases also had predominantly paucibacillary sputum, with low Xpert Ultra semi-
13 quantitative and sputum smear grade, and low CRP levels. Collectively, these data support the
14 hypothesis that asymptomatic TB in the community, among persons not presenting for healthcare,
15 is associated with less severe disease and less systemic inflammation, than symptomatic TB
16 diagnosed among clinic attendees. This finding reinforces the principle that a triage test for
17 symptomatic clinic attendees cannot be adopted uncritically as a community screening test among
18 asymptomatic individuals. It will be essential that performance of new screening tests for
19 asymptomatic TB in the community is not benchmarked against performance of those same tests
20 for triage and diagnosis of symptomatic TB. Further, given the importance of mass community
21 screening to detect asymptomatic TB, it has been proposed that tests with sensitivity lower than
22 proposed in the WHO Target Product Profile¹³ might be acceptable.²⁵

23
24 It is acknowledged that mass community CXR screening in endemic settings may detect a large
25 number of undiagnosed TB cases if deployed at scale²⁶, despite suboptimal sensitivity. However,
26 control of the epidemic may require that a larger proportion of asymptomatic community TB cases
27 are detected and treated, in which case, additional diagnostic tools would be needed to find the
28 approximately 40% of TB cases missed by CXR screening of asymptomatic individuals. In the
29 absence of a more sensitive screening tool for asymptomatic TB, our study suggests that universal
30 sputum testing with either a molecular test or culture is appropriate for selected high-risk groups,
31 such as HHC, with high diagnostic yield. In community prevalence surveys, the yield of prevalent TB
32 is low (<0.1–1.2%), with asymptomatic TB estimated at around 50% of cases.³ In an individual
33 participant data meta-analysis, Stuck et al. (2024)¹⁶ reported a lower proportion of asymptomatic
34 pulmonary TB in adults in community settings of 28% after adjustment. Our study indicates that an
35 additional 36% of asymptomatic TB cases could be accrued through universal sputum testing, but
36 this approach might not be affordable in many high TB burden countries.

37
38 A particular strength of this study is the systematic approach to universal symptom, CXR, and
39 sputum screening. There were also several limitations. Only spontaneously expectorated sputum

1 samples were collected; it is possible that sputum induction may have yielded higher rates of
2 asymptomatic TB. We detected eight sputum MGIT culture negative, Xpert Ultra positive TB cases,
3 five of whom had prior TB. However, only two of the prior episodes were within the preceding three
4 years, which makes false positive Xpert results less likely. It is also possible that the CXR reading
5 methodology may have missed pathology. CXR were read once by an investigator at each site for
6 any abnormality and, while it is possible that additional readers might increase sensitivity, it is more
7 likely that requiring concordance of two or more readers would improve specificity at the expense of
8 sensitivity.²⁷ Specialised radiological training and expertise might further increase accuracy, but may
9 not be readily available in TB-endemic settings. CXR reading with computer-assisted detection
10 (CAD) software meets or exceeds the minimum TPP for a TB triage test for symptomatic adults with
11 presumptive TB,^{13,22,28} and has been recommended by the WHO as an alternative to human readers.
12 However, in the South African TB prevalence survey CAD accuracy was significantly lower in
13 asymptomatic compared to symptomatic individuals.²⁹ In future work, we plan to compare diagnostic
14 accuracy of CXR with multiple investigator readers to CAD for diagnosis of asymptomatic TB. CRP
15 levels were measured by multiplex bead array, rather than a validated, high-sensitivity assay
16 platform. However, although assay sensitivity might differ, it appears that relative to symptomatic TB
17 in symptomatic clinic attendees, CRP levels were lower in HHC with asymptomatic or symptomatic
18 TB. Finally, TB symptoms were self-reported and subjective. Chronic or mild symptoms that did not
19 interfere with daily function, such as a smoking-related cough, may have been perceived as normal.
20 Perhaps more important than whether symptoms were truly present or absent, unlike a clinic triage
21 scenario, all HHC who participated in this study were not actively seeking healthcare.

22
23 Our study supports the idea that current community screening approaches detect only the “tip of the
24 iceberg”³⁰, since symptom and CXR screening missed approximately 40% of asymptomatic TB in
25 this household contact-tracing study. If these findings in South Africa are replicated in other high
26 burden countries, in which national TB prevalence surveys have omitted definitive diagnostic testing
27 of asymptomatic, CXR-negative individuals, it is possible that the global burden of asymptomatic TB
28 has been significantly underestimated. It also appears that biomarkers developed and tested for
29 triage of symptomatic TB, such as CRP, would perform sub-optimally as community screening tests
30 for asymptomatic TB. These findings suggest that, pending discovery and validation of new non-
31 sputum TB biomarkers for asymptomatic TB, accurate community-based TB screening requires
32 universal sputum microbiological testing.

1 **AUTHORS' CONTRIBUTIONS**

2 TJS, TRS, and MH conceived the idea, raised funds, and/or provided the resources. GW, TJS, TRS,
3 and MH wrote the study protocol and provided study oversight. MT, TM, STM, and FN and were
4 responsible for all site-level activities, including recruitment, clinical management, and data
5 collection. KH provided operational support, and project management. NNC performed Luminex
6 bead arrays. HM, AK, FM, RP, KH, KS, and YFvdH cleaned and verified the underlying data. SCM,
7 HM, and DoA analysed the data. SCM, HM, and MH interpreted the results and wrote the first draft.
8 All authors had full access to the data, confirm the integrity of the data and its presentation, agree
9 with its interpretation as discussed in the manuscript, and reviewed, revised, and approved the
10 manuscript before submission. The corresponding author had final responsibility for the decision to
11 submit for publication.

12

13 **DATA AVAILABILITY STATEMENT**

14 The data that support the findings of this study are available on request from the corresponding
15 author. The data are not publicly available due to international data privacy regulations and ethical
16 restrictions.

17

18 **FUNDING STATEMENT**

19 This research was supported by the RePORT South Africa network with funds received from CRDF
20 Global (University of Cape Town: G- DAA3-19-66875-1; Vanderbilt University: G- DAA9-20-66870-
21 1; Stellenbosch University: G- DAA9-20-66918-1; Wits Health Consortium: G-DAA9-20-66878-1),
22 the US National Institute of Health (Stellenbosch University: U01AI152075), and the South African
23 Medical Research Council (SAMRC). The content and findings reported are the sole deduction, view
24 and responsibility of the researcher and do not reflect the official position and sentiments of the
25 SAMRC or the NIH.

26

27 **COMPETING INTERESTS STATEMENT**

28 Authors disclose no competing interests.

1 REFERENCES

- 2
- 3 1. WHO. Global tuberculosis report 2024. Geneva: World Health Organization, 2024.
4 [https://www.who.int/teams/global-tuberculosis-programme/tb-reports/global-](https://www.who.int/teams/global-tuberculosis-programme/tb-reports/global-tuberculosis-report-2024)
5 [tuberculosis-report-2024](https://www.who.int/teams/global-tuberculosis-programme/tb-reports/global-tuberculosis-report-2024).
- 6 2. Moyo S, Ismail F, Van der Walt M, Ismail N, Mkhondo N, Dlamini S, et al. Prevalence of
7 bacteriologically confirmed pulmonary tuberculosis in South Africa, 2017-19: a multistage,
8 cluster-based, cross-sectional survey. *Lancet Infectious Diseases*. 2022;22(8):1172-80. doi:
9 10.1016/S1473-3099(22)00149-9.
- 10 3. Frascella B, Richards AS, Sossen B, Emery JC, Odone A, Law I, et al. Subclinical Tuberculosis
11 Disease-A Review and Analysis of Prevalence Surveys to Inform Definitions, Burden,
12 Associations, and Screening Methodology. *Clinical Infectious Diseases*. 2021;73(3):e830-
13 e41. doi: 10.1093/cid/ciaa1402.
- 14 4. Coussens AK, Zaidi SMA, Allwood BW, Dewan PK, Gray G, Kohli M, et al. Classification of
15 early tuberculosis states to guide research for improved care and prevention: an
16 international Delphi consensus exercise. *Lancet Respir Med*. 2024;12(6):484-98. doi:
17 10.1016/S2213-2600(24)00028-6.
- 18 5. WHO. *Asymptomatic tuberculosis and implications for programmatic action 2024*. Available
19 from: [who.int/teams/global-tuberculosis-programme/tb-reports/global-tuberculosis-](https://www.who.int/teams/global-tuberculosis-programme/tb-reports/global-tuberculosis-report-2024/featured-topics/asymptomatic-tb/)
20 [report-2024/featured-topics/asymptomatic-tb/](https://www.who.int/teams/global-tuberculosis-programme/tb-reports/global-tuberculosis-report-2024/featured-topics/asymptomatic-tb/) [Accessed December 10, 2024].
- 21 6. Richards AS, Sossen B, Emery JC, Horton KC, Heinsohn T, Frascella B, et al. Quantifying
22 progression and regression across the spectrum of pulmonary tuberculosis: a data
23 synthesis study. *Lancet glob health*. 2023;11(5):e684-e92. doi: 10.1016/S2214-
24 109X(23)00082-7.
- 25 7. Ryckman TS, Dowdy DW, Kendall EA. Infectious and clinical tuberculosis trajectories:
26 Bayesian modeling with case finding implications. *Proceedings of the National Academy of*
27 *Sciences of the United States of America*. 2022;119(52):e2211045119. doi:
28 10.1073/pnas.2211045119.
- 29 8. Nguyen HV, Tiemersma E, Nguyen NV, Nguyen HB, Cobelens F. Disease Transmission by
30 Patients With Subclinical Tuberculosis. *Clinical Infectious Diseases*. 2023;76(11):2000-6.
31 doi: 10.1093/cid/ciad027.
- 32 9. Emery JC, Dodd PJ, Banu S, Frascella B, Garden FL, Horton KC, et al. Estimating the
33 contribution of subclinical tuberculosis disease to transmission: An individual patient data
34 analysis from prevalence surveys. *Elife*. 2023;12. doi: 10.7554/eLife.82469.
- 35 10. Van't Hoog A, Viney K, Biermann O, Yang B, Leeflang MM, Langendam MW. Symptom- and
36 chest-radiography screening for active pulmonary tuberculosis in HIV-negative adults and
37 adults with unknown HIV status. *Cochrane Database of Systematic Reviews*.
38 2022;3(3):CD010890. doi: 10.1002/14651858.CD010890.pub2.
- 39 11. WHO. Consolidated guidelines on tuberculosis. Module 2: screening – systematic screening
40 for tuberculosis disease. Geneva: World Health Organization, 2021.
41 <https://apps.who.int/iris/handle/10665/340255> (accessed November 4, 2021).
- 42 12. Chegou NN, Detjen AK, Thiart L, Walters E, Mandalakas AM, Hesselning AC, et al. Utility of
43 host markers detected in Quantiferon supernatants for the diagnosis of tuberculosis in
44 children in a high-burden setting. *PLoS ONE*. 2013;8(5):e64226. doi:
45 10.1371/journal.pone.0064226.
- 46 13. WHO. High-priority target product profiles for new tuberculosis diagnostics: report of a
47 consensus meeting. Geneva: World Health Organization, 2014.
48 <https://apps.who.int/iris/handle/10665/135617> (accessed May 22, 2020).

- 1 14. Scriba TJ, Fiore-Gartland A, Penn-Nicholson A, Mulenga H, Kimbung Mbandi S, Borate B, et al. Biomarker-guided tuberculosis preventive therapy (CORTIS): a randomised controlled
2 trial. *Lancet Infectious Diseases*. 2021;21(3):354-65. doi: 10.1016/S1473-3099(20)30914-2.
- 3 15. Horton KC, Richards AS, Emery JC, Esmail H, Houben R. Reevaluating progression and
4 pathways following *Mycobacterium tuberculosis* infection within the spectrum of
5 tuberculosis. *Proceedings of the National Academy of Sciences of the United States of*
6 *America*. 2023;120(47):e2221186120. doi: 10.1073/pnas.2221186120.
- 7 16. Stuck L, Klinkenberg E, Abdelgadir Ali N, Basheir Abukaraig EA, Adusi-Poku Y, Alebachew
8 Wagaw Z, et al. Prevalence of subclinical pulmonary tuberculosis in adults in community
9 settings: an individual participant data meta-analysis. *Lancet Infectious Diseases*.
10 2024;24(7):726-36. doi: 10.1016/S1473-3099(24)00011-2.
- 11 17. Klinkenberg E, Floyd S, Shanaube K, Mureithi L, Gachie T, de Haas P, et al. Tuberculosis
12 prevalence after 4 years of population-wide systematic TB symptom screening and
13 universal testing and treatment for HIV in the HPTN 071 (PopART) community-randomised
14 trial in Zambia and South Africa: A cross-sectional survey (TREATS). *PLoS Medicine*.
15 2023;20(9):e1004278. doi: 10.1371/journal.pmed.1004278.
- 16 18. Feasey HRA, Khundi M, Soko RN, Bottomley C, Chiume L, Burchett HED, et al. Impact of
17 active case-finding for tuberculosis on case-notifications in Blantyre, Malawi: A community-
18 based cluster-randomised trial (SCALE). *PLOS Glob Public Health*. 2023;3(12):e0002683.
19 doi: 10.1371/journal.pgph.0002683.
- 20 19. MacPherson P, Shanaube K, Phiri MD, Rickman HM, Horton KC, Feasey HRA, et al.
21 Community-based active-case finding for tuberculosis: navigating a complex minefield.
22 *BMC Glob Public Health*. 2024;2(1):9. doi: 10.1186/s44263-024-00042-9.
- 23 20. Marks GB, Nguyen NV, Nguyen PTB, Nguyen TA, Nguyen HB, Tran KH, et al. Community-
24 wide Screening for Tuberculosis in a High-Prevalence Setting. *New England Journal of*
25 *Medicine*. 2019;381(14):1347-57. doi: 10.1056/NEJMoa1902129.
- 26 21. Yoon C, Chaisson LH, Patel SM, Allen IE, Drain PK, Wilson D, et al. Diagnostic accuracy of C-
27 reactive protein for active pulmonary tuberculosis: a meta-analysis. *International Journal*
28 *of Tuberculosis and Lung Disease*. 2017;21(9):1013-9. doi: 10.5588/ijtld.17.0078.
- 29 22. Crowder R, Thangakunam B, Andama A, Christopher DJ, Dalay V, Nwamba W, et al.
30 Diagnostic accuracy of TB screening tests in a prospective multinational cohort: Chest-X-ray
31 with computer-aided detection, Xpert TB host response, and C-reactive protein. *Clinical*
32 *Infectious Diseases*. 2024. doi: 10.1093/cid/ciae549.
- 33 23. Kendall EA, Kitonsa PJ, Nalutaaya A, Erisa KC, Mukiibi J, Nakasolya O, et al. The Spectrum of
34 Tuberculosis Disease in an Urban Ugandan Community and Its Health Facilities. *Clinical*
35 *Infectious Diseases*. 2021;72(12):e1035-e43. doi: 10.1093/cid/ciaa1824.
- 36 24. Ruperez M, Shanaube K, Mureithi L, Wapamesa C, Burnett MJ, Kosloff B, et al. Use of point-
37 of-care C-reactive protein testing for screening of tuberculosis in the community in high-
38 burden settings: a prospective, cross-sectional study in Zambia and South Africa. *Lancet*
39 *glob health*. 2023;11(5):e704-e14. doi: 10.1016/S2214-109X(23)00113-4.
- 40 25. Nooy A, Ockhuisen T, Korobitsyn A, Khan SA, Ruhwald M, Ismail N, et al. Trade-offs
41 between clinical performance and test accessibility in tuberculosis diagnosis: a multi-
42 country modelling approach for target product profile development. *Lancet glob health*.
43 2024;12(7):e1139-e48. doi: 10.1016/S2214-109X(24)00178-5.
- 44 26. MacPherson P, Stagg HR, Schwalb A, Henderson H, Taylor AE, Burke RM, et al. Impact of
45 active case finding for tuberculosis with mass chest X-ray screening in Glasgow, Scotland,
46 1950-1963: An epidemiological analysis of historical data. *PLoS Medicine*.
47 2024;21(11):e1004448. doi: 10.1371/journal.pmed.1004448.
- 48 27. Nguyen TBP, Nguyen TA, Luu BK, Le TTO, Nguyen VS, Nguyen KC, et al. A comparison of
49 digital chest radiography and Xpert((R)) MTB/RIF in active case finding for tuberculosis.
50

- 1 International Journal of Tuberculosis and Lung Disease. 2020;24(9):934-40. doi:
2 10.5588/ijtld.19.0764.
- 3 28. Worodria W, Castro R, Kik SV, Dalay V, Derendinger B, Festo C, et al. An independent,
4 multi-country head-to-head accuracy comparison of automated chest x-ray algorithms for
5 the triage of pulmonary tuberculosis. medRxiv. 2024. doi: 10.1101/2024.06.19.24309061.
- 6 29. Qin ZZ, Van der Walt M, Moyo S, Ismail F, Maribe P, Denkinge CM, et al. Computer-aided
7 detection of tuberculosis from chest radiographs in a tuberculosis prevalence survey in
8 South Africa: external validation and modelled impacts of commercially available artificial
9 intelligence software. Lancet Digit Health. 2024;6(9):e605-e13. doi: 10.1016/S2589-
10 7500(24)00118-3.
- 11 30. Houben R, Esmail H, Cobelens F, Williams CML, Coussens AK. Tuberculosis prevalence:
12 beyond the tip of the iceberg. Lancet Respir Med. 2022;10(6):537-9. doi: 10.1016/S2213-
13 2600(22)00184-9.
14