

1 **Metformin on Time to Sustained Recovery in Adults with COVID-19: The ACTIV-6 Randomized**
2 **Clinical Trial**

3
4 Carolyn T. Bramante, MD, MPH,¹ Thomas G. Stewart, PhD,² David R. Boulware, MD, MPH,¹ Matthew
5 W. McCarthy, MD,³ Yue Gao, MS, Med,⁴ Russell L. Rothman, MD, MPP,⁴ Ahmad Mourad, MD,^{5,6}
6 Florence Thicklin,⁷ Jonathan B. Cohen, MD,⁸ Idania T. Garcia del Sol, MD,⁹ Juan Ruiz-Unger, MD,¹⁰
7 Nirav S. Shah, MD, MPH,¹¹ Manisha Mehta, DPM,¹² Orlando Quintero Cardona, MD,¹³ Jake Scott, MD,¹³
8 Adit A. Ginde, MD, MPH,¹⁴ Mario Castro, MD, MPH,¹⁵ Dushyantha Jayaweera, MD,¹⁶ Mark Sulkowski,
9 MD,¹⁷ Nina Gentile, MD,¹⁸ Kathleen McTigue, MD,¹⁹ G. Michael Felker, MD,^{5,6} Sean Collins, MD,
10 MSci,^{4,20} Sarah E. Dunsmore, PhD,²¹ Stacey J. Adam, PhD,²² Christopher J. Lindsell, PhD,⁶ Adrian F.
11 Hernandez, MD, MHS,⁶ Susanna Naggie, MD, MHS⁶ for the Accelerating COVID-19 Therapeutic
12 Interventions and Vaccines (ACTIV)-6 Study Group and Investigators
13

14 ¹Department of Medicine, University of Minnesota Medical School, Minneapolis, MN; ²School of Data
15 Science, University of Virginia, Charlottesville, VA; ³Weill Cornell Medicine, New York, NY; ⁴Vanderbilt
16 University Medical Center, Nashville, TN; ⁵Department of Medicine, Duke University School of
17 Medicine, Durham, NC; ⁶Duke Clinical Research Institute, Duke University School of Medicine,
18 Durham, NC; ⁷Stakeholder Advisory Committee, Pittsburgh, PA; ⁸Jadestone Clinical Research, LLC,
19 Silver Spring, MD; ⁹L&A Morales Healthcare, Inc., Miami, FL; ¹⁰Innovation Clinical Trials, Inc., Miami,
20 FL; ¹¹Endeavor Health, Evanston, IL; ¹²GCF of Southeastern Michigan, PC, Detroit, MI; ¹³Stanford
21 University School of Medicine, Department of Medicine, Division of Infectious Diseases, Stanford, CA;
22 ¹⁴University of Colorado School of Medicine, Aurora, CO; ¹⁵Division of Pulmonary, Critical Care and
23 Sleep Medicine, University of Kansas Medical Center, Kansas City, KS; ¹⁶Department of Medicine,
24 Miller School of Medicine, University of Miami, Miami, FL; ¹⁷Division of Infectious Diseases, Johns
25 Hopkins University, Baltimore, MD; ¹⁸Department of Emergency Medicine, Lewis Katz School of
26 Medicine at Temple University, Philadelphia, PA; ¹⁹Department of Medicine, University of Pittsburgh

27 Medical Center, Pittsburgh, PA; ²⁰Veterans Affairs Tennessee Valley Healthcare System, Geriatric
28 Research, Education and Clinical Center (GRECC), Nashville, TN; ²¹National Center for Advancing
29 Translational Sciences, Bethesda, MD; ²²Foundation for the National Institutes of Health, Bethesda, MD.

30 **Title Character count:** 102

31 **Word count:** 2963

32

33 **Address for correspondence:** Susanna Naggie, MD, MHS, Duke Clinical Research Institute, Duke
34 University School of Medicine, 300 West Morgan St, Suite 800, Durham, NC 27701. Email:

35 susanna.naggie@duke.edu

36

37

38

39

40

41

42

43

44

45

46

47

48

49

50 **Abstract**

51 **Importance:** The effect of metformin on reducing symptom duration among outpatient adults with
52 coronavirus disease 2019 (COVID-19) has not been studied.

53 **Objective:** Assess metformin compared with placebo for symptom resolution during acute infection with
54 SARS-CoV-2.

55 **Design, Setting, and Participants:** The ACTIV-6 platform evaluated repurposed medications for mild to
56 moderate COVID-19. Between September 19, 2023, and May 1, 2024, 2991 participants age ≥ 30 years
57 with confirmed SARS-CoV-2 infection and ≥ 2 COVID-19 symptoms for ≤ 7 days, were included at 90 US
58 sites.

59 **Interventions:** Participants were randomized to receive metformin (titrated to 1500 mg daily) or placebo
60 for 14 days.

61 **Main Outcomes and Measures:** The primary outcome was time to sustained recovery (3 consecutive
62 days without COVID-19 symptoms) within 28 days of receiving study drug. Secondary outcomes
63 included time to hospitalization or death; time to healthcare utilization (clinic visit, emergency department
64 visit, hospitalization, or death). Safety events of special interest were hypoglycemia and lactic acidosis.

65 **Results:** Among 2991 participants who were randomized and received study drug, the median age was 47
66 years (IQR 38–58); 63.4% were female, 46.5% identified as Hispanic/Latino, and 68.3% reported ≥ 2
67 doses of a SARS-CoV-2 vaccine. Among 1443 participants who received metformin and 1548 who
68 received placebo, differences in time to sustained recovery were not observed (adjusted hazard ratio
69 [aHR] 0.96; 95% credible interval [CrI] 0.89–1.03; $P(\text{efficacy})=0.11$). For participants enrolled during
70 current variants, the aHR was 1.19 (95% CrI 1.05–1.34). The median time to sustained recovery was 9
71 days (95% confidence interval [CI] 9–10) for metformin and 10 days (95% CI 9–10) for placebo. No
72 deaths were reported; 111 participants reported healthcare utilization: 58 in the metformin group and 53 in
73 the placebo group (HR 1.24; 95% CrI 0.81–1.75; $P(\text{efficacy})=0.135$). Seven participants who received
74 metformin and 3 who received placebo experienced a serious adverse event over 180 days. Five
75 participants in each group reported having hypoglycemia.

76 **Conclusions and Relevance** In this randomized controlled trial, metformin was not shown to shorten the
77 time to symptom resolution in adults with mild to moderate COVID-19. The median days to symptom
78 resolution was numerically but not significantly lower for metformin. Safety was not a limitation in the
79 study population.

80

81 **Trial Registration:** ClinicalTrials.gov (NCT04885530).

82

83 INTRODUCTION

84 Metformin has been the first-line medication for type 2 diabetes for decades. Metformin has also been
85 shown to exhibit *in vitro* antiviral actions in studies with dengue, hepatitis C, and rotavirus, potentially via
86 host-directed modulation of the mammalian target of rapamycin (mTOR) pathway.¹⁻⁹ Observational and
87 prospective analyses have reported that prevalent metformin use was associated with less severe
88 outcomes during acute infection with severe acute respiratory syndrome coronavirus 2 (SARS-CoV-2).¹⁰⁻
89 ¹⁸ In the COVID-OUT randomized trial of metformin versus placebo, the outcome of hospitalization /
90 death occurred in 1.3% of the metformin group and 3.2% of the placebo group, suggesting that further
91 study was warranted to validate these findings.¹³

92 As effective vaccines, natural immunity, and antivirals now make hospitalizations and deaths
93 from coronavirus disease 2019 (COVID-19) rare, outpatient treatment for symptom resolution remains a
94 need. The Accelerating Coronavirus Disease 2019 Therapeutic Interventions and Vaccines (ACTIV-6)
95 platform randomized clinical trial evaluated repurposed medications in the outpatient setting.¹⁹ For this
96 study, the ACTIV-6 platform sought to evaluate the effect of 14 days of immediate-release metformin,
97 titrated to 1500 mg over 6 days, on time to sustained recovery from mild to moderate COVID-19 in non-
98 hospitalized adults.

99

100 METHODS

101 Trial Design and Oversight

102 ACTIV-6 was a double-blind randomized placebo-controlled platform trial of repurposed medications in
103 outpatient adults with mild to moderate COVID-19.^{19,20} ACTIV-6 was decentralized, allowing virtual
104 enrollment and enrollment through health care and community settings, to improve access. The trial
105 protocol was approved by a central institutional review board with review at each site. Informed consent
106 was obtained from each participant. An independent data and safety monitoring committee oversaw
107 participant safety, efficacy, and trial conduct. Reporting followed CONSORT guidelines for randomized
108 trials.²¹

109 **Participants**

110 The ACTIV-6 platform was open to enrollment from June 11, 2021, to April 29, 2024, with ~11,000
111 participants randomized across 7 interventions. The metformin group enrolled participants from 90 U.S.
112 sites between September 19, 2023 and May 1, 2024 (**Supplement**).

113 Eligibility criteria were confirmed at the site level and included age ≥ 30 years, confirmed SARS-
114 CoV-2 infection (positive polymerase chain reaction or home-based antigen test) within 10 days, and
115 actively experiencing ≥ 2 COVID-19 symptoms for ≤ 7 days at the time of consent. Individuals meeting
116 the following criteria were excluded: current hospitalization for COVID-19; current or recent use (within
117 14 days) of metformin, insulin, or sulfonylureas; and known allergy or contraindications to metformin.
118 Prior infection, receipt of COVID-19 vaccinations, or current use of approved or emergency use
119 authorization therapeutics for COVID-19 were allowed.

120

121 **Randomization**

122 Enrollment for metformin did not overlap with other agents on the platform. A random number generator
123 randomized participants 1:1 to metformin or placebo.

124

125 **Interventions**

126 Metformin (immediate-release tablets manufactured by Aurobindo Pharma USA Inc., East Windsor, NJ,
127 USA) or placebo was dispensed to participants via home delivery from a centralized pharmacy. Matching
128 placebo was available after November 9, 2023; 134 participants in the placebo group were enrolled when
129 generic placebo was used. Participants were instructed to self-administer oral metformin (or placebo) at a
130 dose of 500 mg per day (one 500 mg tablet) for 1 day, followed by 500 mg twice a day for 4 days,
131 followed by 500 mg in the morning and 1000 mg in the evening for 9 days, for a 14-day course of 36 total
132 tablets.

133

134

135 **Outcome Measures**

136 The primary outcome was time to sustained recovery within 28 days, defined as the time from receipt of
137 drug to the third of 3 consecutive days without any COVID-19 symptoms.^{7,9} This measure was selected *a*
138 *priori* from the 2 possible primary outcomes of the platform, per the statistical analysis plan. The other—
139 time to hospitalization or death—transitioned to a secondary outcome because there were not sufficient
140 clinical outcomes in the trial overall to study those events as the primary outcome.

141 Pre-specified secondary outcomes included 3 time-to-event endpoints administratively censored
142 at day 28 (number of events permitting): time to death; time to hospitalization or death; and time to first
143 healthcare utilization (a composite of clinic visit, emergency department visit, hospitalization, or death).
144 Additional outcomes included mean time spent unwell through day 14 and the WHO COVID Clinical
145 Progression Scale on days 7, 14, and 28 (**Supplement**). Long COVID symptoms and patient-reported
146 outcomes are being collected through day 180 and are not included in this report.

147

148 **Trial Procedures**

149 Screening and eligibility information were self-reported by participants; infection status was confirmed by
150 sites. Demographic information, medical history, use of concomitant medications, and COVID-19
151 symptoms were self-reported. The centralized investigational pharmacy packaged and shipped active or
152 placebo study products to participants. Day 1 was defined based on receipt of study product as tracked by
153 the courier. Daily assessments were sent to participants via the online REDcap electronic data capture
154 portal during the first 14 days, regardless of symptom status.^{22,23} If participants still had symptoms on day
155 14, the daily assessments continued until sustained recovery or day 28. Planned remote follow-up visits
156 occurred on days 28, 90, 120, 150, and 180.

157 Two safety events of interest were added for the metformin protocol: lactic acidosis or patient-
158 reported hypoglycemia. Participants were not instructed to monitor blood sugar and the study did not send
159 glucometers.

160

161 **Statistical Analysis Plan**

162 Inferences about the primary outcome and exploratory analyses involving secondary outcomes were
163 based primarily on covariate-adjusted regression modeling, supplemented by unadjusted models.
164 Proportional hazard regression was used for time-to-event analysis, and cumulative probability ordinal
165 regression models were used for ordinal outcomes. Differences in the mean time spent unwell were
166 estimated with longitudinal ordinal regressions models.²⁴

167 The primary endpoint analysis was a Bayesian proportional hazards model. The primary
168 inferential quantity was the posterior distribution for the treatment assignment hazard ratio (HR), with a
169 $HR > 1$ indicating benefit. If the posterior probability of benefit exceeded 0.95 during interim or final
170 analyses, the efficacy threshold would be met. To preserve type I error < 0.05 , the prior for the treatment
171 effect parameter on the log relative hazard scale was a normal distribution centered at 0 and scaled to a
172 standard deviation (SD) of 0.1. All other parameter priors were weakly informative, using the software
173 default of 2.5 times the ratio of the SD of the outcome divided by the SD of the predictor variable. The
174 study was designed to have 80% power to detect a HR of 1.2 in the primary endpoint.

175 The model for the primary endpoint included predictor variables: randomization assignment, age,
176 sex, duration of symptoms prior to study drug receipt, calendar time, vaccination status, geographical
177 location, call center indicator, and day 1 symptom severity. The proportional hazard assumption of the
178 primary endpoint was evaluated by generating visual diagnostics such as the log-log plot and plots of
179 time-dependent regression coefficients for each predictor in the model.

180 Secondary endpoints were analyzed with Bayesian regression models (either proportional hazards
181 or proportional odds). Weakly informative priors were used for all parameters. Analyses resulting from
182 secondary endpoints should be interpreted as exploratory given the potential for type I errors due to
183 multiple comparisons.

184 All available data were used to compare metformin versus placebo, regardless of post-
185 randomization adherence. The modified intention-to-treat (mITT) cohort comprised all participants who
186 were randomized, who did not withdraw before study drug delivery, were not administratively withdrawn,

187 and for whom the courier confirmed study drug delivery. Participants who opted to discontinue data
188 collection were censored at the time of last contact, including those participants who did not complete any
189 surveys or phone calls after study drug delivery. Missing data among covariates for both primary and
190 secondary analyses were addressed with conditional mean imputations.

191 A predefined assessment of treatment effect heterogeneity (HTE) encompassed age, symptom
192 duration, body mass index (BMI), symptom severity on day 1, calendar time (indicative of circulating
193 SARS-CoV-2 variant), sex, and vaccination status. A proportion of participants filled out day 1 symptom
194 surveys after taking the first dose of metformin or placebo, so a sensitivity analysis was done to remove
195 adjusting for post-intervention symptoms or side effects.^{25,26} Metformin can cause a statistically
196 significant, but not necessarily clinically significant, increase in diarrhea, a known side effect and also a
197 COVID-19 symptom, soon after intake.¹³

198 Analyses were performed with R¹⁰ version 4.4 with the following primary packages: rstanarm,^{11,12}
199 rmsb,¹³ and survival.¹⁴

200

201 **RESULTS**

202 **Study Population**

203 Of the 3214 participants randomized, 223 (6.9%) were excluded because study drug was not delivered
204 within 7 days, or they were administratively withdrawn for not providing accurate confirmation of
205 infection. Thus, the mITT analysis included 2991 participants, of whom 1443 (48.2%) received
206 metformin and 1548 (51.8%) received placebo (**Figure 1**). Among the mITT participants, 5.9% confirmed
207 receiving but taking no study medication and were not included in the safety analysis.

208 The median age of the mITT population was 47 years (interquartile range [IQR] 38–58); 63.4%
209 were female, 80.1% were White, 11.7% were Black, 0.3% were American Indian or Alaska Native, and
210 46.5% identified as Hispanic/Latino. Overall, 2% had diabetes, 3% had heart disease, 68.3% reported ≥ 2
211 doses of a SARS-CoV-2 vaccine, and 38.3% had obesity. Comorbidities were well balanced, though
212 40.1% in the metformin group and 36.6% in the placebo group had obesity (**Table 1**).

213 Study drug was delivered within a median of 5 days of symptom onset (IQR 4–7 days). The
214 distribution of time between COVID-19 symptoms and study drug delivery is reported in **eFigure 1**.
215 Participants who achieved 3 days without symptoms on or before study drug delivery were not excluded.
216 Of the 2710 participants who submitted symptom surveys on the day of study drug delivery, 5% reported
217 no symptoms, 47% reported mild symptoms, 45% reported moderate symptoms, and 3% reported severe
218 symptoms (**Table 1, eTable 1**).

219

220 **Primary Outcome**

221 Overall, 87/2991(3%) did not provide any follow-up responses beyond study day 1 and an additional
222 152/2991 (5%) were censored due to partial follow-up responses. Differences in time to sustained
223 recovery were not observed in either the covariate-adjusted regression models (**Table 2**) or unadjusted
224 Kaplan-Meier curves (**Figure 2**). The median time to sustained recovery was 9 days (95% CI 9–10) in the
225 metformin group and 10 days (95% CI 9–10) in the placebo group. The posterior probability for benefit
226 was 0.11, with an adjusted hazard ratio (aHR) of 0.95 (95% credible interval [CrI] 0.89–1.03). In the
227 sensitivity analysis that adjusted for symptoms at randomization to remove adjusting for post-intervention
228 symptoms or side effects, the aHR was 0.98 (95% CrI 0.91–1.05). Sensitivity analyses based on different
229 patterns of missing symptom data yielded similar estimates of the treatment effect (**eFigure 2**).

230

231 **Secondary Outcomes**

232 No deaths were observed in this study. A total of 7/2991 participants (0.23%) were hospitalized (**Table 2,**
233 **eFigure 3**). There were 58 (4.0%) participants in the metformin group and 53 (3.4%) in the placebo group
234 who reported a hospital admission, emergency department visit, or clinic visit (**Table 2, eFigure 3**), aHR
235 for the composite healthcare encounter outcome was 1.24 (95% CrI 0.81–1.75) with a posterior
236 probability of efficacy of 0.135.

237 By day 7, 163/2991 (5.45%) reported limitation on activities. Because 94% of responding

238 participants reported no limitations in activity on the COVID clinical progression scale, this endpoint did

239 not meet prespecified thresholds for beneficial treatment effect (**eFigure 4**). Likewise, the mean time
240 unwell was similar between the metformin and placebo groups, 11.6 days (CrI 11.4–11.7) versus 11.5
241 days (CrI 11.4–11.7), respectively, (difference 0.03, 95% CrI -0.21 to 0.28; P[efficacy]=0.40) (**Table 2**,
242 **Figure 3**).

243

244 **Adverse Events and Events of Special Interest**

245 The safety sample for collecting serious adverse events was the 2815/2991 (94.1%) of participants who
246 reported taking study medication at least once. The incidence of serious events over 180 days was low (11
247 total events within 10/2825 [0.35%] of participants), with 8 events (7 participants) in the metformin group
248 and 3 events (3 participants) in the placebo group. There were no episodes of lactic acidosis and 5
249 episodes of patient-reported hypoglycemia in each treatment group (**eTable 2**).

250

251 **Heterogeneity of Treatment Effect Analyses**

252 In participants with no symptoms on day 1, the aHR for time to symptom recovery was 0.40 (95% CI
253 0.28–0.58; P<0.01). The interaction model created a calendar time category for those enrolled after March
254 15, 2024, which is when the FLiRT variants became dominant. In the 349 (12%) participants enrolled
255 after March 15, 2024, the aHR for time to recovery was 1.19 (95% CI 1.05–1.34; P=0.82) (**eFigure 5**).

256 The primary analysis was stratified by day 1 symptom severity and timing of drug delivery
257 relative to symptom onset. In those with no symptoms on day 1, the curves separated in the direction of
258 benefit for placebo; in those with moderate and severe symptoms, the curves separated in the direction of
259 benefit for metformin (**eFigures 6, 7**).

260 Other baseline characteristics of interest, including history of previous infection and body mass
261 index (BMI), were assessed in post-hoc exploratory analyses. Overall, 71 participants did not provide
262 follow-up information, so 44/2920 (1.5%) had an acute healthcare encounter by day 28: 1.4% in the
263 metformin group and 1.6% in the placebo group. In those with no reported prior infection, 0.99%
264 experienced an acute healthcare encounter in the metformin group and 1.32% in the placebo group

265 (eTable 3). There was no indication that participants with a BMI <25 kg/m² had a longer time to recovery
266 or more healthcare events (eTable 3).

267

268 **DISCUSSION**

269 Among outpatient adults with mild to moderate COVID-19, treatment with immediate-release metformin
270 did not improve time to sustained recovery compared with placebo. Other studies that investigated
271 metformin as an outpatient treatment for SARS-CoV-2 infection evaluated severe clinical events and had
272 limitations: the TOGETHER trial (n=421) had exposure misclassification, but a partially corrected
273 analysis showed similar results for preventing emergency department visits and hospitalizations as
274 COVID-OUT²⁷⁻²⁹ and the COVID-OUT trial (n=1323) had outcome misclassification, with the primary
275 outcome driven by the sensitive but non-specific component of the composite (1 oxygen reading <94% on
276 a home oximeter).¹³ Of those randomized trials, COVID-OUT is the most generalizable to the current
277 state of the pandemic because it enrolled vaccinated individuals and was enrolling after the Omicron
278 wave started. The ACTIV-6 study of metformin has further relevance as it is the first trial to allow
279 individuals with a reported history of prior infection to enroll.

280 The incidence of severe outcomes was less than one-quarter of a percent in the ACTIV-6
281 metformin arm. Such a low incidence means a trial would need to enroll tens of thousands of participants
282 to test whether treatment prevents hospitalizations and deaths, which is why a symptom recovery outcome
283 may be more relevant at this point in the pandemic. However, antivirals developed for SARS-CoV-2 have
284 not reduced symptoms during acute infection.^{30,31} Additionally, most participants were enrolled between
285 December 2023 and March 2024, when the JN-1 variant dominated.³² JN-1 had higher infectivity but
286 lower symptom and disease burden than previous variants.^{33,34} Most participants achieved symptom
287 recovery by day 28, and outcomes with high incidence can make it challenging to detect intervention
288 differences.^{13,35} A portion of the trial was enrolled after the FLiRT variants began, and these variants
289 include mutations similar to those in earlier Omicron subvariants.^{36,37}

290 Strengths of this study include high ethnic diversity with 47% of participants identifying as
291 Hispanic/Latino ethnicity, a result of concerted efforts to translate documents and onboard sites already
292 engaged with diverse communities. Metformin has been studied in hundreds of clinical trials in patients
293 with some degree of chronic disease or risk for disease, such as diabetes, diabetes risk factors, and cancer.
294 This is the first phase 3 trial to randomize adults without chronic disease or disease risk to metformin, and
295 there were no episodes of low blood sugar or lactic acidosis, despite a rapid dose escalation to 1500 mg in
296 just 6 days.

297

298 **Limitations**

299 This study does have limitations. Due to the decentralized nature of ACTIV-6, time from symptom onset
300 to receipt of study drug is approximately 2 days longer than time from symptom onset to enrollment.
301 Trials of antivirals assessing outpatient treatment of SARS-CoV-2, such as nirmatrelvir, simnotrelvir,
302 ensitrelvir, and molnupiravir, restricted eligibility or the primary analysis to participants enrolled within 3
303 days of COVID-19 symptom onset.^{30,31,38} ACTIV-6 inclusion criteria allowed enrollment of participants
304 with up to 7 days of symptoms, in part due to various mechanisms of action of the drugs tested on the
305 platform. However, this resulted in a relatively small number of participants in this study (<21%)
306 receiving drug within 3 days of symptom onset. Because emerging data from *in vivo* and *in vitro* studies
307 have shown that metformin has antiviral activity against SARS-Co-V-2, a time-dependent treatment effect
308 is expected.^{14,39-43} An additional limitation for a primary outcome of symptom resolution is that 5% of the
309 mITT participants had no symptoms on the day of study drug delivery. Prespecified and exploratory
310 results are directionally consistent with hypotheses about benefit with earlier initiation, consistent with
311 other studies assessing earlier initiation of metformin, but underpowered subgroups cannot be over-
312 interpreted.^{13,44,45} This study also had a higher proportion of post-randomization exclusions compared
313 with earlier studies, and the placebo group is 7% larger than the metformin group. Information on effect
314 modifiers such as time of study drug initiation and previous infection could not always be captured, and
315 nonresponse for primary and secondary outcome measures is less than 10% but may introduce some bias.

316 **Conclusions**

317 Among low-risk outpatient adults with mild to moderate COVID-19, metformin did not shorten the time
318 to symptom recovery compared with placebo. The median days to symptom resolution was numerically
319 but not significantly lower for metformin than placebo. Emergency room visits or hospitalizations were
320 too infrequent to draw conclusions between the two study groups. There were no episodes of lactic
321 acidosis or other significant safety concerns in this trial of metformin in adults without diabetes or
322 diabetes risk factors such as overweight and obesity.

323

324

325

326

327

328

329

330

331 **Acknowledgments**

332 We thank George J. Hanna, MD, of the Biomedical Advanced Research and Development Authority, for
333 his roles in trial implementation and operations. We also thank the ACTIV-6 Data Monitoring Committee,
334 Clinical Events Committee, and Stakeholder Advisory Committee Members (listed below) for their
335 contributions.

336 Data Monitoring Committee: Clyde Yancy, MD, MSc, Northwestern University Feinberg School of
337 Medicine; Adaora Adimora, MD, University of North Carolina, Chapel Hill; Susan Ellenberg, PhD,
338 University of Pennsylvania; Kaleab Abebe, PhD, University of Pittsburgh; Arthur Kim, MD,
339 Massachusetts General Hospital; John D. Lantos, MD, Children's Mercy Hospital; Jennifer Silvey-Cason,
340 Participant representative; Frank Rockhold, PhD, Duke Clinical Research Institute; Sean O'Brien, PhD,
341 Duke Clinical Research Institute; Frank Harrell, PhD, Vanderbilt University Medical Center; Zhen
342 Huang, MS, Duke Clinical Research Institute.

343 Clinical Events Committee: Renato Lopes, MD, PhD, MHS, W. Schuyler Jones, MD, Antonio Gutierrez,
344 MD, Robert Harrison, MD, David Kong, MD, Robert McGarrah, MD, Michelle Kelsey, MD, Konstantin
345 Krychtiuk, MD, Vishal Rao, MD all of the Duke Clinical Research Institute, Duke University School of
346 Medicine.

347 Stakeholder Advisory Committee: Megan E. Hamm, Kathleen McTigue, Kirk T. Phillips, Andrew Vasey,
348 Talethia Edwards, Danielle Nelson, Greg Merritt, Jeannie Nguyen, Josh Denson, Jonathan Arnold,
349 Matthew W. McCarthy, Florence Thicklin.

350

351 Elizabeth E.S. Cook of the Duke Clinical Research Institute provided editorial support.

352

353 **Author Contributions**

354 Drs Naggie, Hernandez, and Lindsell had full access to all the blinded data in the study. Dr Stewart was
355 provided curated study data and takes responsibility for the integrity of the data analysis. All authors
356 contributed to the drafting and review of the manuscript and agreed to submit for publication.

357 **Disclosures**

358 **Bramante:** Reports grants from NIH NIDDK during the conduct of the study; Grants from NIH outside
359 the submitted work.

360 **Stewart:** Reports grants from NIH NCATS during the conduct of the study; Grants from NIH outside the
361 submitted work.

362 **Boulware:** Reports grants from NIH during the conduct of the study.

363 **McCarthy:** Nothing to report.

364 **Gao:** Nothing to report.

365 **Rothman:** Reports grants from NIH, PCORI, AHRQ, CDC, CardioHealth Alliance during the conduct of
366 the study. Spouse owns stock in Moderna unrelated to the current work.

367 **Mourad:** Nothing to report.

368 **Thicklin:** Nothing to report.

369 **Cohen:** Nothing to report.

370 **Garcia del Sol:** Nothing to report.

371 **Ruiz-Unger:** Nothing to report.

372 **Shah:** Nothing to report.

373 **Mehta:** Nothing to report.

374 **Cardona:** Nothing to report.

375 **Scott:** Nothing to report.

376 **Ginde:** Reports grants from NIH during the conduct of the study; Grants from NIH, CDC, DoD, AbbVie
377 (investigator-initiated), and Faron Pharmaceuticals (investigator-initiated) outside the submitted work.

378 **Castro:** Reports institutional grant funding from NIH, ALA, PCORI, AstraZeneca, GSK, Novartis,
379 Pulmatrix, Sanofi-Aventis, Shionogi; Speaker/Consultant fees from Grant Funding, Genentech, Teva,
380 Sanofi-Aventis; Consultant fees from Merck, Novartis, Arrowhead, OM Pharma, Allakos; Speaker
381 honorarium from Amgen, AstraZeneca, GSK, Regeneron; Royalties from Elsevier all outside the
382 submitted work.

383 **Jayaweera:** Reports grants from NCATS PI-Ralph Sacco during the conduct of the study; Grants from
384 Gilead, Pfizer, Janssen, and Viiv; Consulting fees from Theratechnologies outside the submitted work.

385 **Sulkowski:** Reports advisory board fees from AbbVie, Gilead, GSK, Atea, Antios, Precision Bio, Viiv,
386 and Virion; Institutional grants from Janssen outside the submitted work.

387 **Gentile:** Reports personal fees from Duke University for protocol development and oversight during the
388 conduct of the study; grants from NIH outside the submitted work.

389 **McTigue:** Reports grants from NIH Research Subcontract to the University of Pittsburgh during the
390 conduct of the study; Research contract to the University of Pittsburgh from Pfizer, and Janssen outside
391 the submitted work.

392 **Felker:** Reports institutional research grants from NIH during the conduct of the study and from Novartis
393 outside the submitted work.

394 **Collins:** Reports grant funding from NHLBI and personal fees from Vir Biotechnology during the
395 conduct of the study.

396 **Dunsmore:** Nothing to report.

397 **Adam:** Reports other from US Government Funding through Operation Warp Speed during the conduct
398 of the study.

399 **Lindsell:** Reports institutional grants from NCATS during the conduct of the study; Institutional grants
400 from NIH, CDC, and DoD; Contract with institution for research services from Endpoint Health,
401 bioMerieux, Entegriion Inc, Abbvie, and Astra Zeneca, Biomeme, and Novartis outside the submitted
402 work; Dr Lindsell has a patent for risk stratification in sepsis and septic shock issued to Cincinnati
403 Children's Hospital Medical Center.

404 **Hernandez:** Reports grants from American Regent, Amgen, Boehringer Ingelheim, Merck, Verily,
405 Somologic, and Pfizer; Personal fees from AstraZeneca, Boston Scientific, Cytokinetics, Bristol Myers
406 Squibb, and Merck outside the submitted work.

407 **Naggie:** Reports grants from NIH, the sponsor for this study, during the conduct of the study; Institutional
408 research grants from Gilead Sciences, AbbVie; Consulting fees from Pardes Biosciences; Scientific

409 advisor/Stock options from Vir Biotechnology; Consulting with no financial payment from Silverback
410 Therapeutics; DSMB fees from Personal Health Insights, Inc; Event adjudication committee fees from
411 BMS/PRA outside the submitted work.

412

413 **Funding/Support**

414 ACTIV-6 is funded by the National Center for Advancing Translational Sciences (NCATS)
415 (3U24TR001608-06S1). Additional support for this study was provided by the Office of the Assistant
416 Secretary for Preparedness and Response, Biomedical Advanced Research and Development Authority
417 (Contract No.75A50122C00037). The Vanderbilt University Medical Center Clinical and Translational
418 Science Award from NCATS (UL1TR002243) supported the REDCap infrastructure.

419

420 **Role of the Sponsor**

421 NCATS participated in the design and conduct of the study; collection, management, analysis, and
422 interpretation of the data; preparation, review, or approval of the manuscript; and decision to submit the
423 manuscript for publication.

424

425 **Data Sharing Statement**

426 ACTIV-6 is a platform trial using shared placebos. On completion of the platform trial, when there is no
427 risk of unblinding across study arms, the data will be made publicly available by depositing it in an
428 approved data repository such as NHLBI's BioData Catalyst.

429

430 **References**

- 431 1. Del Campo JA, García-Valdecasas M, Gil-Gómez A, et al. Simvastatin and metformin inhibit cell
432 growth in hepatitis C virus infected cells via mTOR increasing PTEN and autophagy. *PLoS One*.
433 2018;13(1):e0191805. doi:10.1371/journal.pone.0191805
- 434 2. Karam BS, Morris RS, Bramante CT, et al. mTOR inhibition in COVID-19: A commentary and
435 review of efficacy in RNA viruses. <https://doi.org/10.1002/jmv.26728>. *Journal of Medical*
436 *Virology*. 2021/04/01 2021;93(4):1843-1846. doi:<https://doi.org/10.1002/jmv.26728>
- 437 3. Tsai WL, Chang TH, Sun WC, et al. Metformin activates type I interferon signaling against HCV
438 via activation of adenosine monophosphate-activated protein kinase. *Oncotarget*. Nov 3
439 2017;8(54):91928-91937. doi:10.18632/oncotarget.20248
- 440 4. Soto-Acosta R, Bautista-Carbajal P, Cervantes-Salazar M, Angel-Ambrocio AH, Del Angel RM.
441 DENV up-regulates the HMG-CoA reductase activity through the impairment of AMPK
442 phosphorylation: A potential antiviral target. *PLoS Pathog*. Apr 2017;13(4):e1006257.
443 doi:10.1371/journal.ppat.1006257
- 444 5. Karim M, Lo CW, Einav S. Preparing for the next viral threat with broad-spectrum antivirals. *J*
445 *Clin Invest*. Jun 1 2023;133(11)doi:10.1172/jci170236
- 446 6. Zhang R, Feng C, Luo D, et al. Metformin Hydrochloride Significantly Inhibits Rotavirus
447 Infection in Caco2 Cell Line, Intestinal Organoids, and Mice. *Pharmaceuticals (Basel)*. Sep 11
448 2023;16(9)doi:10.3390/ph16091279
- 449 7. Ibrahim S, Lowe JR, Bramante CT, et al. Metformin and Covid-19: Focused Review of
450 Mechanisms and Current Literature Suggesting Benefit. *Front Endocrinol (Lausanne)*.
451 2021;12:587801. doi:10.3389/fendo.2021.587801
- 452 8. Nakashima K, Takeuchi K, Chihara K, Hotta H, Sada K. Inhibition of hepatitis C virus replication
453 through adenosine monophosphate-activated protein kinase-dependent and -independent
454 pathways. *Microbiol Immunol*. Nov 2011;55(11):774-82. doi:10.1111/j.1348-0421.2011.00382.x

- 455 9. Shinohara Y, Imajo K, Yoneda M, et al. Unfolded protein response pathways regulate Hepatitis C
456 virus replication via modulation of autophagy. *Biochem Biophys Res Commun*. Mar 8
457 2013;432(2):326-32. doi:10.1016/j.bbrc.2013.01.103
- 458 10. Kow CS, Hasan SS. Mortality risk with preadmission metformin use in patients with COVID-19
459 and diabetes: A meta-analysis. *J Med Virol*. Feb 2021;93(2):695-697. doi:10.1002/jmv.26498
- 460 11. Song ZH, Huang QM, Xu SS, Zhou JB, Zhang C. The Effect of Antihyperglycemic Medications
461 on COVID-19: A Meta-analysis and Systematic Review from Observational Studies. *Ther Innov
462 Regul Sci*. Jul 2024;58(4):773-787. doi:10.1007/s43441-024-00633-6
- 463 12. Crouse AB, Grimes T, Li P, Might M, Ovalle F, Shalev A. Metformin Use Is Associated With
464 Reduced Mortality in a Diverse Population With COVID-19 and Diabetes. *Front Endocrinol
465 (Lausanne)*. 2020;11:600439. doi:10.3389/fendo.2020.600439
- 466 13. Bramante CT, Huling JD, Tignanelli CJ, et al. Randomized Trial of Metformin, Ivermectin, and
467 Fluvoxamine for Covid-19. *N Engl J Med*. Aug 18 2022;387(7):599-610.
468 doi:10.1056/NEJMoa2201662
- 469 14. Ventura-López C, Cervantes-Luevano K, Aguirre-Sánchez JS, et al. Treatment with metformin
470 glycinate reduces SARS-CoV-2 viral load: An in vitro model and randomized, double-blind,
471 Phase IIb clinical trial. *Biomed Pharmacother*. Aug 2022;152:113223.
472 doi:10.1016/j.biopha.2022.113223
- 473 15. Chan LE, Casiraghi E, Laraway B, et al. Metformin is associated with reduced COVID-19
474 severity in patients with prediabetes. *Diabetes Res Clin Pract*. Dec 2022;194:110157.
475 doi:10.1016/j.diabres.2022.110157
- 476 16. Qiu S, Hubbard AE, Gutiérrez JP, et al. Estimating the effect of realistic improvements of
477 metformin adherence on COVID-19 mortality using targeted machine learning. *Glob Epidemiol*.
478 Jun 2024;7:100142. doi:10.1016/j.gloepi.2024.100142

- 479 17. Hunt CM, Efird JT, Redding TS, et al. Medications Associated with Lower Mortality in a SARS-
480 CoV-2 Positive Cohort of 26,508 Veterans. *Journal of General Internal Medicine*. 2022/12/01
481 2022;37(16):4144-4152. doi:10.1007/s11606-022-07701-3
- 482 18. Usman A, Bliden KP, Cho A, et al. Metformin use in patients hospitalized with COVID-19: lower
483 inflammation, oxidative stress, and thrombotic risk markers and better clinical outcomes. *J*
484 *Thromb Thrombolysis*. Feb 2022;53(2):363-371. doi:10.1007/s11239-022-02631-7
- 485 19. ACTIV-6: Operationalizing a decentralized, outpatient randomized platform trial to evaluate
486 efficacy of repurposed medicines for COVID-19. *J Clin Transl Sci*. 2023;7(1):e221.
487 doi:10.1017/cts.2023.644
- 488 20. Naggie S, Boulware DR, Lindsell CJ, et al. Effect of Ivermectin vs Placebo on Time to Sustained
489 Recovery in Outpatients With Mild to Moderate COVID-19: A Randomized Clinical Trial. *JAMA*.
490 2022;328(16):1595-1603. doi:10.1001/jama.2022.18590
- 491 21. Schulz KF, Altman DG, Moher D, Group C. CONSORT 2010 Statement: updated guidelines for
492 reporting parallel group randomised trials. *Trials*. Mar 24 2010;11:32. doi:10.1186/1745-6215-11-
493 32
- 494 22. Harris PA, Taylor R, Minor BL, et al. The REDCap consortium: Building an international
495 community of software platform partners. *J Biomed Inform*. Jul 2019;95:103208.
496 doi:10.1016/j.jbi.2019.103208
- 497 23. Harris PA, Taylor R, Thielke R, Payne J, Gonzalez N, Conde JG. Research electronic data capture
498 (REDCap)--a metadata-driven methodology and workflow process for providing translational
499 research informatics support. *J Biomed Inform*. Apr 2009;42(2):377-81.
500 doi:10.1016/j.jbi.2008.08.010
- 501 24. Rohde MD, French B, Stewart TG, Harrell FE, Jr. Bayesian transition models for ordinal
502 longitudinal outcomes. *Stat Med*. Aug 15 2024;43(18):3539-3561. doi:10.1002/sim.10133

- 503 25. *Adjusting for Covariates in Randomized Clinical Trials for Drugs and Biological Products*. 2023.
504 [https://www.fda.gov/regulatory-information/search-fda-guidance-documents/adjusting-](https://www.fda.gov/regulatory-information/search-fda-guidance-documents/adjusting-covariates-randomized-clinical-trials-drugs-and-biological-products)
505 [covariates-randomized-clinical-trials-drugs-and-biological-products](https://www.fda.gov/regulatory-information/search-fda-guidance-documents/adjusting-covariates-randomized-clinical-trials-drugs-and-biological-products)
- 506 26. Holmberg MJ, Andersen LW. Adjustment for Baseline Characteristics in Randomized Clinical
507 Trials. *JAMA*. 2022;328(21):2155-2156. doi:10.1001/jama.2022.21506
- 508 27. Expression of concern - Effect of early treatment with metformin on risk of emergency care and
509 hospitalization among patients with COVID-19: the TOGETHER randomized platform clinical
510 trial. *The Lancet Regional Health – Americas*. 2024;31doi:10.1016/j.lana.2024.100703
- 511 28. Lee TC, Boulware DR. Is there room for metformin at COVID-19's dinner table? Updated
512 Analysis of Clinical Trials. *Clin Infect Dis*. May 17 2024;doi:10.1093/cid/ciae284
- 513 29. Correction to: Repurposing Revisited: Exploring the Role of Metformin for Treatment of
514 Coronavirus Disease 2019. *Clinical Infectious Diseases*. 2024;79(1):285-285.
515 doi:10.1093/cid/ciae257
- 516 30. Hammond J, Leister-Tebbe H, Gardner A, et al. Oral Nirmatrelvir for High-Risk, Nonhospitalized
517 Adults with Covid-19. *New England Journal of Medicine*. 2022;386(15):1397-1408.
518 doi:10.1056/NEJMoa2118542
- 519 31. Jayk Bernal A, Gomes da Silva MM, Musungaie DB, et al. Molnupiravir for Oral Treatment of
520 Covid-19 in Nonhospitalized Patients. *N Engl J Med*. Feb 10 2022;386(6):509-520.
521 doi:10.1056/NEJMoa2116044
- 522 32. Ma KC, Castro J, Lambrou AS, et al. Genomic Surveillance for SARS-CoV-2 Variants:
523 Circulation of Omicron XBB and JN.1 Lineages - United States, May 2023-September 2024.
524 *MMWR Morb Mortal Wkly Rep*. Oct 24 2024;73(42):938-945. doi:10.15585/mmwr.mm7342a1
- 525 33. Lewnard JA, Mahale P, Malden D, et al. Immune escape and attenuated severity associated with
526 the SARS-CoV-2 BA.2.86/JN.1 lineage. *Nat Commun*. Oct 3 2024;15(1):8550.
527 doi:10.1038/s41467-024-52668-w

- 528 34. Levy ME, Chilunda V, Davis RE, et al. Reduced Likelihood of Hospitalization with the JN.1 or
529 HV.1 SARS-CoV-2 Variants Compared to the EG.5 Variant. *J Infect Dis*. Jul 19
530 2024;doi:10.1093/infdis/jiae364
- 531 35. Pocock SJ, Stone GW. The Primary Outcome Fails — What Next? *New England Journal of*
532 *Medicine*. 2016;375(9):861-870. doi:10.1056/NEJMra1510064
- 533 36. Qu P, Evans JP, Faraone JN, et al. Enhanced neutralization resistance of SARS-CoV-2 Omicron
534 subvariants BQ.1, BQ.1.1, BA.4.6, BF.7, and BA.2.75.2. *Cell Host Microbe*. Jan 11 2023;31(1):9-
535 17 e3. doi:10.1016/j.chom.2022.11.012
- 536 37. Wang Q, Mellis IA, Ho J, et al. Recurrent SARS-CoV-2 spike mutations confer growth
537 advantages to select JN.1 sublineages. *Emerg Microbes Infect*. Dec 2024;13(1):2402880.
538 doi:10.1080/22221751.2024.2402880
- 539 38. Cao B, Wang Y, Lu H, et al. Oral Simnoretelvir for Adult Patients with Mild-to-Moderate Covid-
540 19. *New England Journal of Medicine*. 2024/01/17 2024;390(3):230-241.
541 doi:10.1056/NEJMoa2301425
- 542 39. Gordon DE, Jang GM, Bouhaddou M, et al. A SARS-CoV-2 protein interaction map reveals
543 targets for drug repurposing. *Nature*. 2020/07/01 2020;583(7816):459-468. doi:10.1038/s41586-
544 020-2286-9
- 545 40. Parthasarathy H, Tandel D, Siddiqui AH, Harshan KH. Metformin suppresses SARS-CoV-2 in
546 cell culture. *Virus Res*. Nov 20 2022;323:199010. doi:10.1016/j.virusres.2022.199010
- 547 41. Bramante CT, Beckman KB, Mehta T, et al. Favorable Antiviral Effect of Metformin on Severe
548 Acute Respiratory Syndrome Coronavirus 2 Viral Load in a Randomized, Placebo-Controlled
549 Clinical Trial of Coronavirus Disease 2019. *Clin Infect Dis*. May 1 2024;doi:10.1093/cid/ciae159
- 550 42. Schaller MA, Sharma Y, Dupee Z, et al. Ex vivo SARS-CoV-2 infection of human lung reveals
551 heterogeneous host defense and therapeutic responses. *JCI Insight*. 09/22/
552 2021;6(18)doi:10.1172/jci.insight.148003

- 553 43. Xian H, Liu Y, Rundberg Nilsson A, et al. Metformin inhibition of mitochondrial ATP and DNA
554 synthesis abrogates NLRP3 inflammasome activation and pulmonary inflammation. *Immunity*.
555 Jul 13 2021;54(7):1463-1477.e11. doi:10.1016/j.immuni.2021.05.004
- 556 44. Bramante CT, Buse JB, Liebovitz DM, et al. Outpatient treatment of COVID-19 and incidence of
557 post-COVID-19 condition over 10 months (COVID-OUT): a multicentre, randomised, quadruple-
558 blind, parallel-group, phase 3 trial. *Lancet Infect Dis*. Jun 8 2023;doi:10.1016/S1473-
559 3099(23)00299-2
- 560 45. Bramante CT. Metformin reduces the risk of Long COVID or Death over 6 months in an
561 Emulated Target Trial of Primarily Omicron-infected Adults without Diabetes or Prediabetes: a
562 New-User, Active-Comparator Analysis Using the National COVID
563 Cohort Collaborative (N3C) Electronic Health Record Database. 2024:
564
565

566 **Figure Legends**

567 **Figure 1.** Participant flow in a trial of metformin for mild to moderate COVID-19

568 **Figure 2.** Primary outcome of time to sustained recovery

569 **Figure 3.** (A) Time to sustained recovery; (B) hospitalization, urgent or emergency care visits, or death;

570 and (C) mean time unwell

571

572 Table 1. Baseline participant characteristics

Variable	Metformin (n=1443)	Placebo (n=1548)
Age, median (IQR), yrs	47.0 (38.0-57.5)	48.0 (37.0-58.0)
Age < 50 yrs, no. (%)	798 (55.3)	846 (54.7)
Sex, no. (%)		
Female	918 (63.62)	977 (63.11)
Male	522 (36.17)	566 (36.56)
Undifferentiated	1 (0.07)	1 (0.06)
Unknown	1 (0.07)	2 (0.13)
Prefer not to answer	1 (0.07)	2 (0.13)
Race ^a , not mutually exclusive, no. (%)		
American Indian or Alaska Native	18 (1.25)	7 (0.45)
Asian	37 (2.56)	40 (2.58)
Black, African American, or African Middle Eastern or North African	164 (11.37)	186 (12.02)
Native Hawaiian or Other Pacific Islander	35 (2.43)	24 (1.55)
White	4 (0.28)	4 (0.26)
None of the above	1162 (80.53)	1233 (79.65)
Prefer not to answer	31 (2.15)	37 (2.39)
Ethnicity, no. (%)	25 (1.73)	28 (1.81)
Hispanic or Latino	680 (47.12)	712 (45.99)
Not Hispanic or Latino	763 (52.88)	836 (54.01)
Region ^b , no. (%)		
Midwest	295 (20.44)	308 (19.90)
Northeast	119 (8.25)	135 (8.72)
South	890 (61.68)	942 (60.85)
West	139 (9.63)	163 (10.53)
Recruited via call center ^c , no. (%)	41 (2.84)	42 (2.71)
BMI, median (IQR), kg/m ²	28.6 (25.4-32.6)	28.3 (25.1-31.9)
BMI >30 kg/m ² , no./total (%)	579/1443 (40.1)	566/1547 (36.6)
Weight, median (IQR), kg	81.6 (70.8-94.0)	79.8 (70.3-91.2)
Medical history ^d , no./total (%)		
High blood pressure	282/1386 (20.35)	316/1481 (21.34)
Diabetes	31/1386 (2.24)	27/1481 (1.82)
Smoker, past year	197/1386 (14.21)	229/1481 (15.46)
Asthma	142/1386 (10.25)	135/1481 (9.12)
Heart disease	41/1386 (2.96)	48/1481 (3.24)
Malignant cancer	29/1384 (2.10)	31/1476 (2.10)
COPD	30/1386 (2.16)	28/1481 (1.89)
Chronic kidney disease	1/1386 (0.07)	6/1481 (0.41)
SARS-CoV-2 vaccine status, no. (%)		
Not vaccinated	463 (32.09)	480 (31.01)
Vaccinated, 1 dose	2 (0.14)	2 (0.13)
Vaccinated, 2+ doses	978 (67.78)	1066 (68.86)
Days between symptom onset and receipt of drug, median (IQR)	5 (4-7) ^e	5 (4-7) ^f
Days between symptom onset and enrollment, median (IQR)	3 (2-5) ^e	3 (2-5) ^f

Symptom burden on study day 1 ^g , no./No. (%)		
None	68/1322 (5.1)	66/1388 (4.8)
Mild	610/1322 (46.1)	660/1388 (47.6)
Moderate	610/1322 (46.1)	617/1388 (44.5)
Severe	34/1322 (2.6)	45/1388 (3.2)
COVID-19 medications, no. (%)		
Remdesivir	1 (0.07)	0 (0.00)
Nirmatrelvir + ritonavir	204 (14.14)	229 (14.79)
Monoclonal antibodies	31 (2.15)	43 (2.78)
Molnupiravir	10 (0.69)	13 (0.84)

573 Abbreviations: BMI, body mass index (calculated as weight in kilograms divided by height in meters squared); COPD, chronic
574 obstructive pulmonary disease.
575 ^aParticipants were presented with each of these options and may have selected any combination of the race descriptors, including
576 “none of the above” and “prefer not to answer.” Consequently, the sums of counts over all categories do not match the column
577 totals.
578 ^bThe following state groups define each region. Northeast includes Connecticut, Maine, Massachusetts, New Hampshire, Rhode
579 Island, Vermont, New Jersey, New York, and Pennsylvania; Midwest includes Indiana, Illinois, Michigan, Ohio, Wisconsin, Iowa,
580 Kansas, Minnesota, Missouri, Nebraska, North Dakota, and South Dakota; South includes Delaware, District of Columbia,
581 Florida, Georgia, Maryland, North Carolina, South Carolina, Virginia, West Virginia, Alabama, Kentucky, Mississippi, Tennessee,
582 Arkansas, Louisiana, Oklahoma, and Texas; West includes Arizona, Colorado, Idaho, New Mexico, Montana, Utah, Nevada,
583 Wyoming, Alaska, California, Hawaii, Oregon, and Washington.
584 ^cPatients may have alternatively been recruited at local clinical sites.
585 ^dMedical history was provided by participants responding to the following prompts: “Has a doctor told you that you have any of
586 the following?” “Have you ever experienced any of the following? (select all that apply),” and “Have you ever smoked tobacco
587 products?”
588 ^eAmong 1411 participants;
589 ^fAmong 1511 participants
590 ⁱEach day, participants were asked, “Please choose the response that best describes the severity of your COVID-19 symptoms
591 today.”

Outcome	Metformin (n=1443) No. (%)	Placebo (n=1548) No. (%)	Adjusted Estimate ^a HR (95% CrI)	Posterior P(efficacy)
Primary end point				
Time to sustained recovery ^b				
Skeptical prior (primary analysis)			0.96 (0.89 to 1.03)	0.11
Noninformative prior (sensitivity analysis)			0.95 (0.88 to 1.03)	0.10
No prior (sensitivity analysis)			0.95 (0.88 to 1.03) ^c	NA
Adjusted for baseline vs day 1 symptoms			0.98 (0.91 to 1.05)	
Secondary end points^d				
Hospitalization, clinic visit, emergency department visit, or death through day 28 ^e	58 (4.02)	53 (3.42)	1.24 (0.81 to 1.75) ^c	0.135
Mortality at day 28	0	0	NA	NA
Hospitalization or death through day 28	4 (0.28)	3 (0.19)	1.43 (0.32 to 6.38) ^c	NA
Secondary end points				
	Mean (95% CrI)		OR (95% CrI)	
Clinical progression ordinal outcome scale ^f				
Day 7 (n=2884)			1.00 (0.70 to 1.35)	0.544
Day 14 (n=2812)			0.96 (0.56 to 1.42)	0.613
Day 28 (n=2733)			1.08 (0.78 to 1.40)	0.347
Time unwell, days (95% CrI) ^g	11.55 (11.41, 11.67)	11.51 (11.38, 11.65)	NA ^h	0.400

593 Abbreviations: CrI, credible interval; ED, emergency department; HR, hazard ratio; NA, not applicable; OR, odds ratio, for which greater than 1.0 is the direction of benefit for
594 metformin.

595 ^a Unless otherwise noted, a highest-density credible interval is shown. Adjustment variables for time to sustained recovery, mortality, composite clinical end points, and clinical
596 progression in addition to randomization assignment were age (as restricted cubic splines), sex, duration of symptoms prior to receipt of study drug, calendar time (as restricted
597 cubic splines), vaccination status, geographic region (Northeast, Midwest, South, and West), call center indicator, and day 1 symptom severity.

598 ^b Time from receipt of study drug to achieving the third of 3 days of recovery. An HR greater than 1.0 is favorable for faster recovery for metformin compared with placebo.

599 ^c Low event rate precluded covariate adjustment. Maximum partial likelihood estimate (no prior) with a 95% CI.

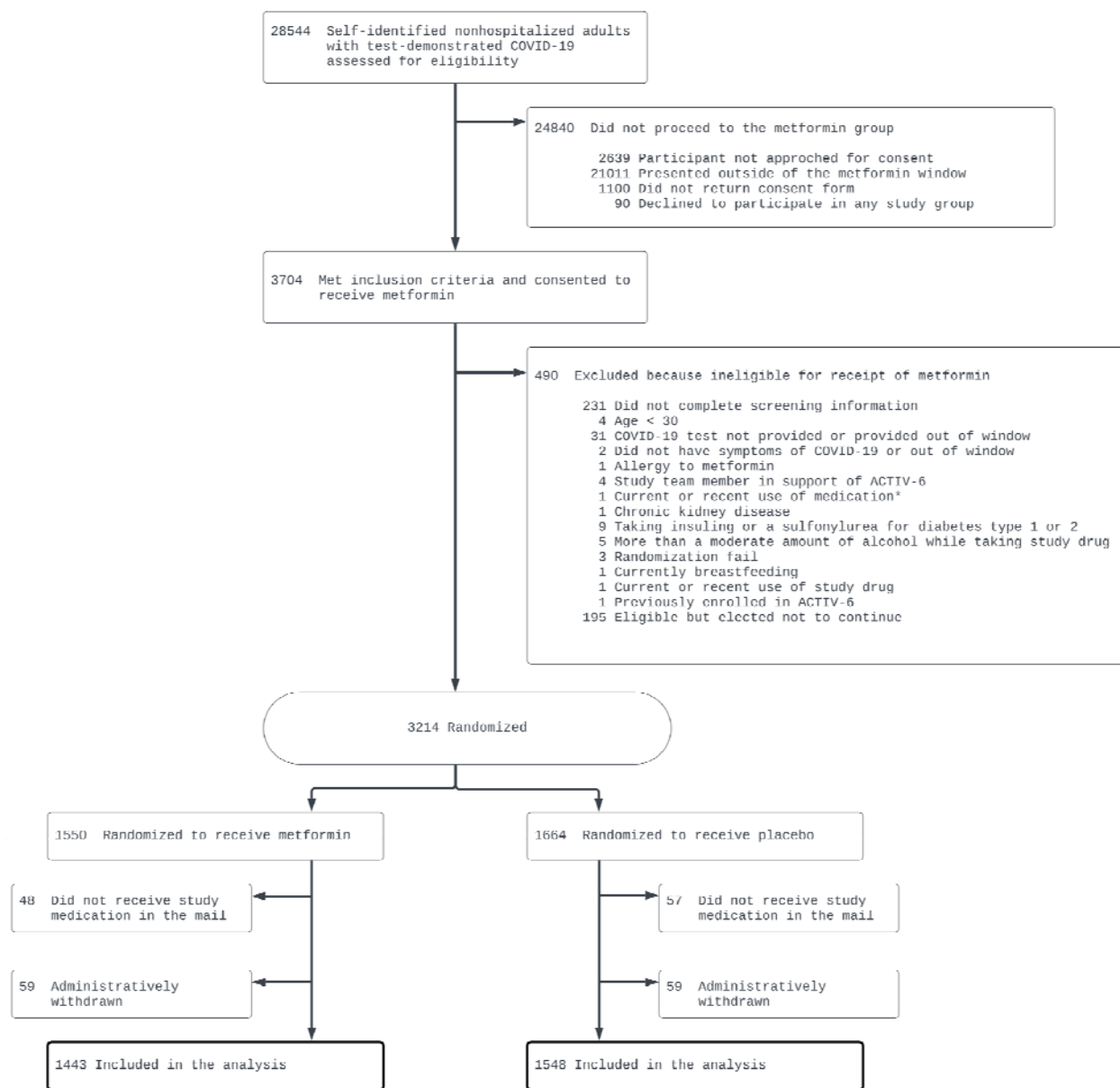
600 ^d For secondary outcomes, an HR or OR less than 1 favors metformin.

601 ^e A priori, death was a component of the composite outcome; however, no deaths were observed.

602 ^f The COVID-19 clinical outcome scale ranges from 0 (no clinical or virologic evidence of infection) to 8 (death), with higher scores indicating more severe illness. See the
603 eMethods in Supplement for a full description.

604 ^g Adjustment variables for mean time unwell in addition to randomization assignment included age and calendar time.
605 ^h Difference in means was 0.03 (95% CI, -0.21 to 0.28), favoring placebo.

606 **Figure 1.** Participant flow in a trial of metformin for mild to moderate COVID-19

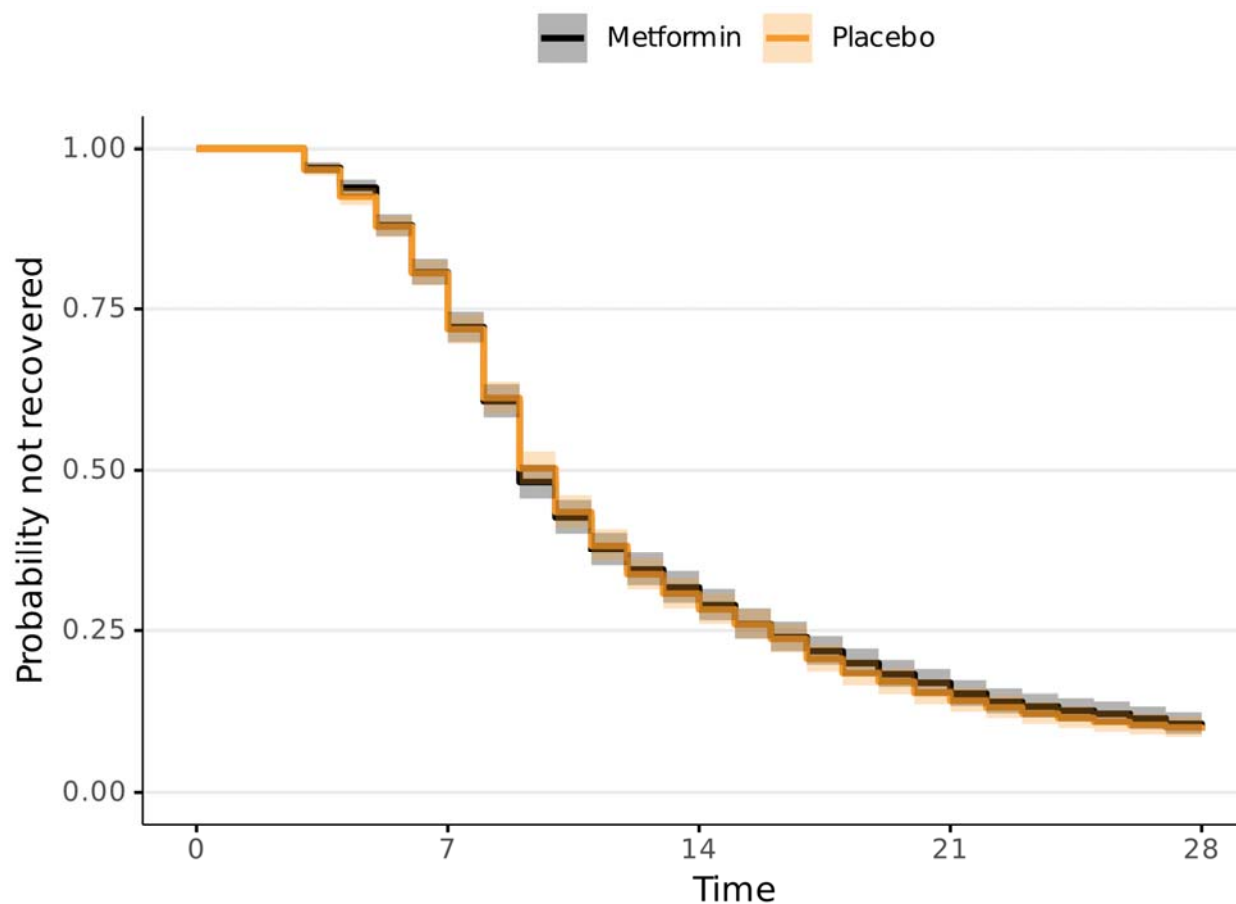


607

608

609

610 **Figure 2.** Primary outcome of time to sustained recovery



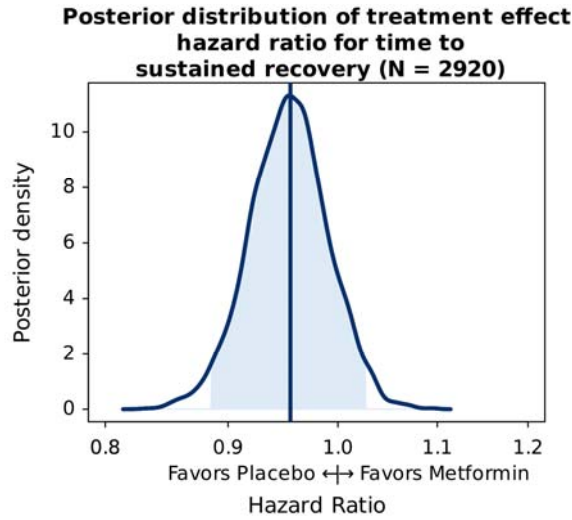
No. at risk

Metformin	1416	1111	415	213	126
Placebo	1504	1185	438	209	129

611
 612 Sustained recovery was defined as the third of 3 consecutive days without symptoms. Seventy-one participants were censored for
 613 complete nonresponse and an additional 168 after partial response, 239/2,991, 8%; all others were followed up until recovery,
 614 death, or the end of short-term 28-day follow-up. Median time to sustained recovery was 9 days (95% CI, 9-10 days) in the
 615 metformin group and 10 days (95% CI, 9-10 days) in the placebo group. Shading denotes the pointwise 95% confidence
 616 intervals.

617

618 **Figure 3A.** Posterior distribution of treatment effect hazard ratio for time to sustained recovery

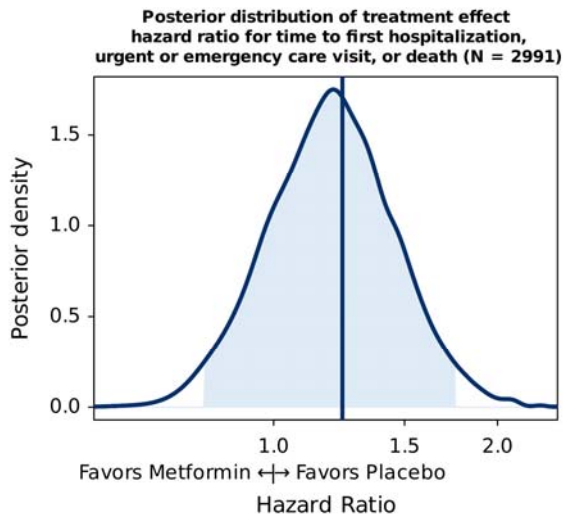


619

620 Posterior density is the relative likelihood of posterior probability distribution. Outcomes with higher posterior density are more
621 likely than outcomes with lower posterior density. Blue density lines represent kernel density estimates constructed from
622 posterior draws; vertical lines, estimated means of the posterior distribution; shading, the 95% credible interval. Posterior density
623 plots of all the covariates in the primary outcome model are shown in eFigure 8 in Supplement.

624

625 **Figure 3B.** Posterior distribution of treatment effect hazard ratio for time to first hospitalization, urgent or
626 emergency care visit, or death

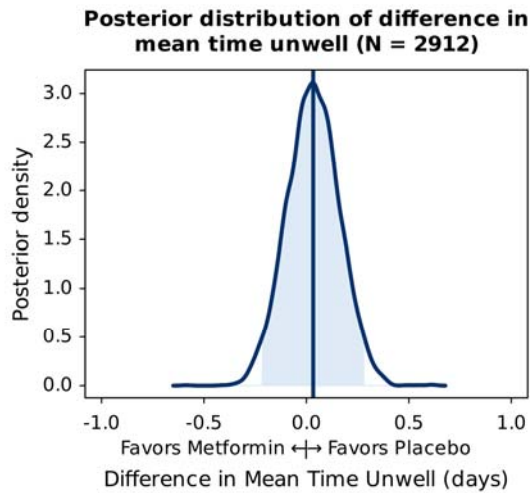


627
628 Posterior density is the relative likelihood of posterior probability distribution. Outcomes with higher posterior density are more
629 likely than outcomes with lower posterior density. Blue density lines represent kernel density estimates constructed from
630 posterior draws; vertical lines, estimated means of the posterior distribution; shading, the 95% credible interval. Posterior density
631 plots of all the covariates in the primary outcome model are shown in eFigure 8 in Supplement.

632

633

634 **Figure 3C.** Posterior distribution of difference in mean time unwell



635

636 Posterior density is the relative likelihood of posterior probability distribution. Outcomes with higher posterior density are more
637 likely than outcomes with lower posterior density. Blue density lines represent kernel density estimates constructed from
638 posterior draws; vertical lines, estimated means of the posterior distribution; shading, the 95% credible interval. Posterior density
639 plots of all the covariates in the primary outcome model are shown in eFigure 8 in Supplement.

640