

1 **Estimating the effects of exercise-based cardiac rehabilitation on health-related quality**
2 **of life in patients with myocardial infarction in Sweden: A registry-based study using**
3 **non-experimental methods**

4

5 Short title: Exercise-based cardiac rehabilitation and health-related quality of life

6

7 Anja N. Stanke¹, Margrét Leósdóttir^{1,2}, Maria Bäck³, Björn Ekman^{1*}

8 ¹ Department of Clinical Sciences, Malmö, Lund University, Sweden

9 ² Department of Cardiology, Skane University Hospital, Malmö, Sweden

10 ³ Institute of Medicine, Department of Molecular and Clinical Medicine, Sahlgrenska
11 Academy, University of Gothenburg and Sahlgrenska University Hospital, Sweden

12

13 BE ORCID id: 0000-0001-7630-7904.

14 ML ORCID id: 0000-0003-1677-1566.

15 MB ORCID id: 0000-0002-6031-7478.

16

17 *Corresponding author: Björn Ekman, bjorn.ekman@med.lu.se

18

19 ANS led the data analysis and the drafting of the manuscript. BE provided analytical support.

20 ML and MB provided support to the conceptualization of the study. All authors contributed to
21 the writing of the manuscript.

22 **Abstract**

23 Participation in exercise-based cardiac rehabilitation (EBCR) improves long-term prognosis
24 for patients following myocardial infarction (MI). Evaluating the effects of EBCR is
25 challenging due to the voluntary nature of participation in the program. Using register data on
26 18,978 patients hospitalized for MI in 2011 to 2013 in Sweden, a non-experimental study
27 design is employed to evaluate the effects of EBCR on the health-related quality of life
28 (HRQoL). Conditional independence from non-random treatment assignment is considered
29 through set of potential-outcome (PO) models to estimate the average treatment effect (ATE)
30 and the ATE on the treated (ATET) of EBCR on HRQoL using the EQ-5D-3L instrument.
31 Changes in the EuroQoL Visual Analogue Scale (EQ-VAS; range 0 to 100) and the EQ5D-
32 Index (range -0.594 to 1) between 6-10 weeks and one-year post-MI are compared between
33 two groups of participants in EBCR (complete participants [≥ 3 months] and non-complete
34 participants [< 3 months]) and non-participants (control group). In total, 43% of patients
35 participated in EBCR to some extent (12% complete, 31% non-complete). Participants
36 showed greater improvement on the EQ-VAS scale compared with non-participants. Patients
37 who completed an EBCR program had a larger improvement (ATE of between 1.851-1.917
38 points; $p < 0.001$) compared with participants who did not complete the full program (0.974-
39 1.017 points; $p < 0.01$). Full participation in the program increased the EQ5D-Index of
40 between 0.014 and 0.017 points ($p < 0.05$), while no statistically significant effect was
41 observed among non-completers. The effect of EBCR on HRQoL was more pronounced
42 among younger patients and those reporting dyspnea and angina than older and non-
43 symptomatic patients. Participating in EBCR may improve the health-related quality of life of
44 patients post-MI. The clinical relevance of the observed impact of EBCR on HRQoL warrants
45 further investigation. The effects of EBCR participation can be readily estimated using
46 broadly applicable non-experimental approaches and commonly available register data.

47 **1 Introduction**

48 Individuals who suffer a myocardial infarction (MI) face an elevated risk of repeated events
49 and death [1] as well as significant impairments in health-related quality of life (HRQoL) [2–
50 4]. HRQoL is a multifaceted concept that assesses a person’s overall functioning and well-
51 being across physical, mental, and social dimensions of health [5]. Losses in HRQoL have
52 repeatedly been reported among patients with MI [2–4]. Furthermore, low HRQoL post-MI is
53 associated with an increased risk of repeated hospital admissions [6], major cardiovascular
54 events and death [7–9]. Consequently, secondary preventive measures aiming to prevent
55 recurrent cardiac events and promote HRQoL among survivors of MI are critical to the
56 effective management and care of this patient group.

57 Guidelines from the European Society of Cardiology for patients with acute coronary
58 syndromes [10] recommend the provision of cardiac rehabilitation (CR) in general, and
59 exercise-based CR (EBCR) in particular, due to its well-established positive effects on
60 cardiovascular risk factor management [11] and prognosis [12]. Although implementation of
61 EBCR programs varies across different settings, such programs generally involve medically
62 supervised physical exercise that combines aerobic and resistance training over a period of at
63 least three months. In Sweden, EBCR participation is routinely offered to post-MI patients
64 [13]. In particular, 24 EBCR sessions for 3 months, along with a pre-exercise and a post-
65 exercise assessment, is recommended.

66 While extensive research demonstrates the positive effects of EBCR on objectively measured
67 risk factors, previous systematic reviews evaluating the impact of EBCR on HRQoL in
68 patients with coronary artery disease have reported inconsistent results [12, 14–16]. This may
69 stem from differences across studies regarding study populations, length of follow-up,
70 HRQoL measurement tools, content, and dose of EBCR treatment. Although randomized
71 controlled trials (RCTs) are often considered the gold standard in the evaluation of treatment

72 effects [17], there are also methodological constraints to RCTs, including the potential for
73 selection-, performance-, and attrition bias [15, 16]. Moreover, the reliance on small samples
74 in RCTs raises concerns about external validity and generalizability.

75 Observational studies with representative samples can be beneficial in this context, in
76 particular when applying methods that go beyond mere establishment of an association [18,
77 19]. To date, only a few well-designed observational studies [20–22] have examined EBCR
78 participation and HRQoL outcome measures. The findings of these studies suggest mixed
79 effects of EBCR on participants’ quality of life. However, none of the studies have solely
80 assessed supervised exercise, but rather considered the impact of a combination of
81 components, including supervised exercise and other treatments, such as dietary and smoking
82 cessation counselling and stress management. Importantly, no study on this issue has applied
83 analytical methods that address the underlying assumption in treatment effect studies of
84 conditional independence between the outcome and treatment assignment. To address this gap
85 in the evidence base, we aimed to evaluate the effect of EBCR on self-reported HRQoL
86 among patients with MI using methods that allow identification of a treatment effect based on
87 observable factors that affect both treatment assignment and outcomes. Specifically, we
88 estimated the average treatment effects (ATE) of EBCR participation by fitting a set of
89 potential-outcome (PO) models to account for self-selection of patients into treatment status.
90 In addition, and building on previous research suggesting that exercise dosage may influence
91 the degree to which physical exercise improves HRQoL [23], we also aimed to investigate
92 whether a dose-response relationship exists between EBCR and HRQoL.

93 **2 Materials and methods**

94 **2.1 Study design and sample**

95 We employed a retrospective cohort study design based on data from the Swedish Web-
96 system for Enhancement and Development of Evidence-based care in Heart disease Evaluated
97 According to Recommended Therapies (SWEDEHEART) [24]. The SWEDEHEART registry
98 collects data on a broad range of patient and treatment characteristics, including demographic
99 information, cardiovascular risk factor management, health behavior, recurrent cardiac events,
100 EBCR participation, and HRQoL. In 2013, 95% of all Swedish CR centers reported to
101 SWEDEHEART, covering 80% of all patients under the age of 75 who had been hospitalized
102 for MI and were alive one year after the acute event [25]. To track the entire patient pathway
103 from acute hospital care to outpatient rehabilitation, SWEDEHEART data is collected on
104 three occasions: at hospitalization (baseline) and at two follow-up visits: 6-10 weeks after MI
105 and 12-14 months after MI. The sample of patients with MI used in this study was drawn
106 from the registered MI cases in SWEDEHEART between 2011-2013 (made available for
107 research purposes on 15/01/2024). In total, 18,978 MI- patients were included, encompassing
108 all patients who had been diagnosed with MI within the three-year period, who attended both
109 follow-up visits, and had non-missing data on EBCR participation.

110 **2.2 Study variables and measures**

111 In SWEDEHEART, self-reported HRQoL is measured with the standardized EuroQol-Five-
112 Dimensions-Three-Level Questionnaire (EQ-5D-3L) [26]. The EQ-5D-3L is validated for use
113 among patients with MI [27] and comprises two parts: a descriptive system (EQ5D-Index)
114 and a visual analog scale (EQ-VAS). The EQ5D-Index is a weighted summary score that
115 reflects an individual's health status across five dimensions (mobility, self-care, usual
116 activities, pain/discomfort, anxiety/depression) while taking into account the health norms of
117 the underlying population. The EQ5D-Index values are benchmarked against the norms of the
118 general population, which in the Swedish case is the UK population norm [28]. The score

119 ranges from negative values (representing a state considered worse than death) to 1
120 (representing full health).

121 The EQ-VAS captures an individual's perception of health status, with participants being
122 asked to rate their current health state on a scale ranging from 0 (“Worst health you can
123 imagine”) to 100 (“Best health you can imagine”) [26]. To evaluate the impact of EBCR on
124 HRQoL, we assessed the change in EQ-VAS score (Δ EQ-VAS) and the change in EQ5D-
125 Index score (Δ EQ5D-Index) between the first and the second follow-up visits.

126 *Participation in EBCR* until the second follow-up visit served as the multivalued treatment
127 variable. Differentiating between no participation (non-participants), participation for less
128 than the recommended three months (non-completers), and participation for at least three
129 months (completers) allowed for the investigation of a potential dose-response relationship
130 between EBCR and HRQoL.

131 To model the relationship between EBCR and HRQoL, we utilized information on a range of
132 observable factors known to affect the quality of life of patients with MI from the
133 SWEDHEART registry, including the age and sex of the patients, employment status,
134 smoking, diabetes, previous MI and/or stroke, dyspnea and/or angina symptoms, and physical
135 activity above average. In addition, an estimate of the distance from the patient’s home to the
136 clinic was linked to the current dataset [11]. This measure was hypothesized to affect
137 participation in the EBCR program [29] but not to affect the outcome. As such, it serves as an
138 instrumental variable in the models enhancing the strength of the analysis.

139 To avoid underpowered categories, we dichotomized the categorical variables *employment*
140 *status* and *smoking*, differentiating between employed/non-employed, and smoker/non-
141 smoker. In SWEDHEART, angina is rated based on the Canadian Cardiovascular Society
142 (CCS) grading of angina pectoris [30], while dyspnea is classified based on the New York
143 Heart Association (NYHA) Functional Classification system [31]. Angina and dyspnea were

144 considered present when patients reported symptoms rated as class II-IV on the CCS and
145 NYHA scales, respectively. The variables *dyspnea* and *angina* were dichotomized and
146 combined into the binary variable *dyspnea and/or angina symptoms* to capture a more
147 comprehensive measure of potential symptoms of a similar nature. The binary variables
148 *previous MI* and *previous stroke* were combined into the variable *previous MI and/or stroke*.
149 Finally, we created the variable *physical activity above average* to indicate whether a patient's
150 normal physical activity level (measured by the self-reported number of physical activity days
151 per week) was above or below the average observed in the sample.

152 The selection of the covariates was informed by insights from prior studies on the relationship
153 between EBCR and HRQoL [7, 29, 32, 33]. Data on the covariates *dyspnea and/or angina*
154 *symptoms* and *number of physical activity days per week* were collected during the first follow-
155 up visit, while information on all other covariates was gathered at the time of MI. An overview
156 of all variables used in the study is given in Table S1.

157 **2.3 Statistical methods**

158 To address the possibility of unobserved confounding, we employed potential outcomes
159 models to estimate the average treatment effects (ATE) and the average treatment effects on
160 the treated (ATET) [34]. Specifically, to obtain consistent estimates of the effects of EBCR on
161 HRQoL we used the following potential outcomes treatment effect estimators: regression
162 adjustment (RA), inverse probability weighting (IPW), inverse probability weighting with
163 regression adjustment (IPWRA), and augmented inverse probability weighting (AIPW) [35].
164 To account for self-selection into treatment groups these approaches utilize observable
165 information to create comparability between the treatment group(s) and an untreated control
166 group [36]. While RA estimators model the outcome and IPW estimators the treatment
167 assignment process, the IPWRA and AIPW predictors embody a doubly-robust property by
168 predicting both the outcome and the treatment assignment process [35]. Doubly-robust

169 estimators come with the advantage that only one model needs to be correctly specified for
170 consistent estimation [35].

171 Our identification approach involved a series of steps, including: i) obtaining baseline
172 differences between the EBCR groups and the control group using independent samples t-
173 tests and chi-square tests of independence, as appropriate; ii) comparing the observed mean
174 changes in EQ-VAS and EQ5D-Index between treatment groups by 1-year post-MI using
175 independent samples t-tests; iii) controlling for the effect of other variables that may distort
176 the relationship between EBCR and HRQoL; iv) exploring whether the effect of EBCR on
177 HRQoL was strengthened or weakened depending on a patient's sex, age, dyspnea and/or
178 angina symptoms, and overall physical activity level by conducting interaction analyses; and
179 v) performing sensitivity checks to test the robustness of our findings.

180 In step iii, we addressed the potential for endogeneity bias by a) including age, sex,
181 employment status, dyspnea and/or angina symptoms, diabetes, smoking, and number of
182 physical activity days per week as potentially confounding factors in multiple linear
183 regression models (hereinafter referred to as “base models”, see Table S2 and S3) and b)
184 employing the previously described potential outcomes treatment effect estimators: RA, IPW,
185 IPWRA, and AIPW. To model the outcome, we utilized the covariates age, sex, employment
186 status, dyspnea and/or angina symptoms, diabetes, smoking, and number of physical activity
187 days per week. The same covariates along with the variable distance to clinic were used to
188 predict treatment allocation. The variable smoking was only included in the EQ-VAS models,
189 as Wald test results indicated that including smoking in the EQ5D-Index models would
190 increase the error term without substantially improving the prediction. All data management
191 and analyses were done using Stata 17.

192 **2.4 Ethical considerations**

193 The study complied with the Declaration of Helsinki and was approved by The Regional
194 Ethical Review Board at Lund University, Sweden (Registration numbers 2014/6 and
195 2014/387). The need for informed participant consent was waived by the ethics review board
196 as all data were anonymized and the researchers did not have access to information that could
197 identify individual participants during or after the implementation of the study.

198 **3 Results**

199 **3.1 Descriptive statistics**

200 The total sample included almost 19,000 patients, around 12 percent of whom participated
201 fully in the EBCR program (completers) and 31 percent participated albeit <3 months (non-
202 completers). Approximately one-third of the sample was female, and the sample's average
203 age was 63 years (s.d. 8.66 years), 42 percent were employed, and 29 percent were current
204 smokers at the time of hospitalization. With respect to comorbidities, around one-fifth of the
205 sample had suffered from previous MI and/or stroke, and 18 percent had diabetes at the time
206 of hospitalization. On average, patients reported being physically active on four days a week
207 at the time of the first follow-up visit. A detailed description of the study sample can be found
208 in Table 1.

Table 1. Descriptive statistics at baseline by participation status.

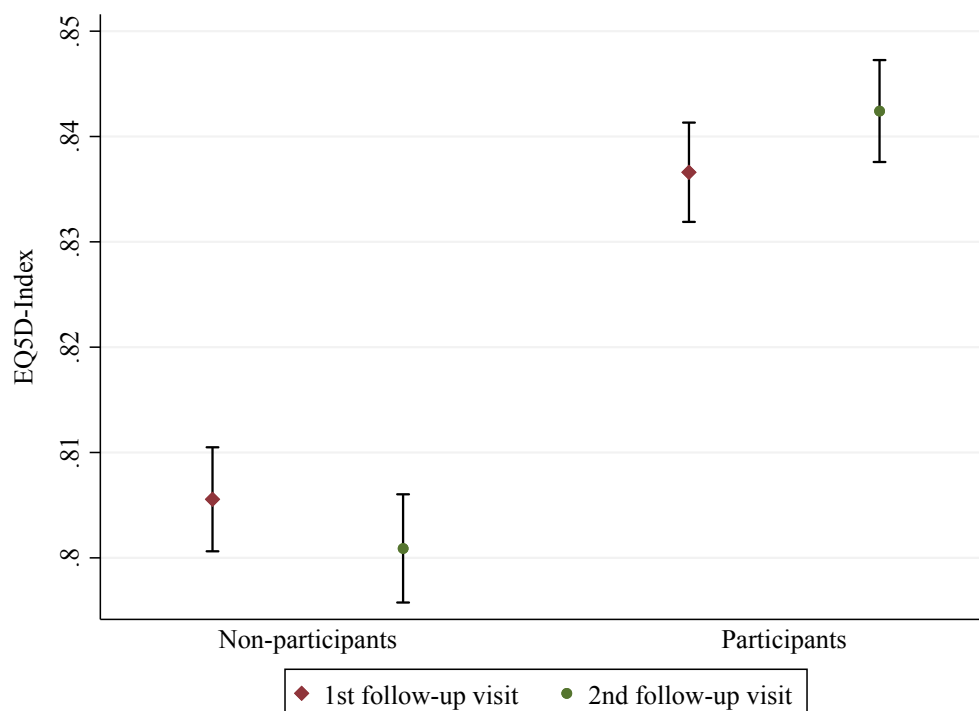
	Total 18,978	No participation N = 10,761	Participation < 3 months N=5,841	Participation ≥ 3 months N=2,376
Age, years				
Mean	62.78	63.22	61.83	63.17
SD	8.66	8.68	8.69	8.33
Male				
N	14,180	8,085	4,338	1,757
%	74.72	75.13	74.27	73.95
Employed at baseline				
N	7,598	3,994	2,650	954
%	42.31	39.27	47.76	42.63
Previous MI and/or stroke				
N	3,765	2,506	889	370
%	19.93	23.40	15.28	15.64
Dyspnea and/or angina symptoms at 1 st follow-up				
N	2,032	1,209	568	255
%	12.20	13.17	10.61	11.96
Diabetes at baseline				
N	3,413	2,171	871	371
%	18.02	20.21	14.96	15.65
Smoker at baseline				
N	5,405	3,390	1,510	505
%	29.10	32.16	26.42	21.79
Number of physical active days per week at 1 st follow-up				
Mean	4.05	3.73	4.45	4.47
SD	2.65	2.77	2.44	2.46
Distance to clinic, km				
Mean	22.04	23.23	20.25	20.98
SD	10.37	10.86	9.27	9.88

211 3.2 Baseline differences between treatment groups

212 Table 1 shows the baseline differences between the two groups of EBCR participants and the
213 control group for all covariates. While some differences between non-completers (EBCR <3
214 months) and completers (EBCR \geq 3 months) were evident, more notable differences were
215 observed between those attending EBCR and those not attending EBCR. Patients not
216 attending EBCR were more likely to be smokers, to be diagnosed with diabetes, to have
217 experienced previous MI and/or stroke, and to report dyspnea and/or angina symptoms
218 compared with patients attending EBCR. Also, non-participants were more often male, living
219 further away from the clinic, and reported a slightly more physically active lifestyle than
220 participants. All observed intergroup differences, except for gender distribution, were
221 statistically significant (Table S4 and S5).

222 3.2.1 Differences in HRQoL between and within treatment groups

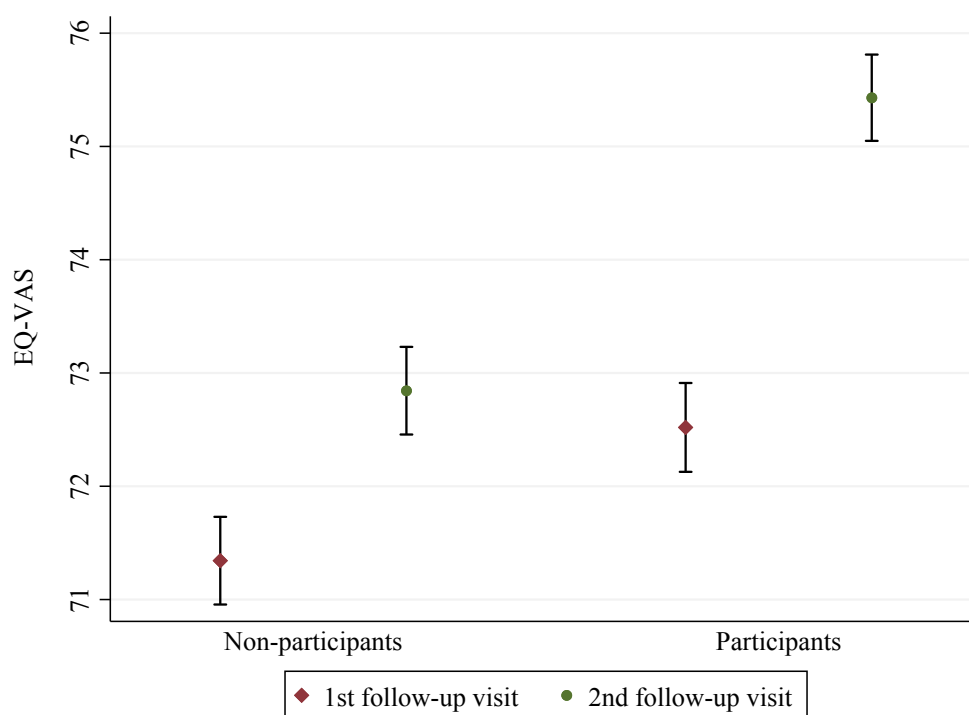
223 The EQ5D-Index values of participants (completers and non-completers combined) and non-
224 participants at the first and second follow-up visits are presented in Figure 1.



225

226 **Figure 1. EQ5D-Index scores with 95% Confidence Intervals at the 1st and 2nd follow-up**
227 **visits by treatment group.**

228 While among participants the EQ5D-Index score increased slightly between the follow-up
229 visits ($p=0.022$), no such change in the EQ5D-Index score was observed for non-participants
230 ($p=0.061$). Employing independent samples t-tests, the observed difference between EBCR
231 participants and non-participants in Δ EQ5D-Index was statistically significant ($p=0.003$).
232 Intergroup differences for EQ-VAS are shown in Figure 2. Over the one-year follow-up
233 period non-participants reported a mean increase of 1.5 points ($p=0.0000$) while EBCR
234 participants reported a mean increase of 2.9 points on the EQ-VAS scale ($p=0.0000$).



235
236 **Figure 2. EQ-VAS scores with 95% Confidence Intervals at the 1st and 2nd follow-up visits**
237 **by treatment group.**

238 In addition to intergroup differences, we also found differences in HRQoL status within the
239 EBCR treatment group. Specifically, we found that EBCR participants suffering from
240 dyspnea and/or angina symptoms had lower HRQoL scores at the first follow-up visit (EQ-
241 VAS: 61.6 ± 18.3 ; EQ5D-Index: 0.73 ± 0.24) compared to non-symptomatic EBCR participants

242 (EQ-VAS: 73.9 ± 16.7 ; EQ5D-Index: 0.85 ± 0.2) ($p=0.0000$). Similarly, HRQoL values at the
243 first follow-up visit were found to be lower among younger EBCR participants than among
244 older participants (Table S6).

245 **3.3 Potential-outcomes models**

246 Table 5 shows the estimated treatment effects of EBCR on Δ EQ-VAS from fitting the RA,
247 IPW, IPWRA, and AIPW models; ATE upper part and ATET lower part. Compared to non-
248 participation, participation in EBCR was associated with an increase in the absolute EQ-VAS
249 score by between 0.974 and 1.017 points among non-completers (EBCR < 3 months) and by
250 between 1.851 and 1.917 points among completers (EBCR \geq 3 months), after adjusting for
251 observable factors. The ATET of EBCR on EQ-VAS took on slightly smaller values and
252 ranged from 0.797 to 0.887 points among non-completers and from 1.733 to 1.857 points
253 among completers. All effect measures were statistically significant (Table 5) and aligned
254 with the findings of the base models (Tables S2 and S3), suggesting a significant albeit small
255 effect of EBCR on Δ EQ-VAS.

256 **Table 5. Estimated changes in EQ-VAS scores at one-year post-MI (ATE and ATET).**

	RA	IPW	IPWRA	AIPW
ATE				
EBCR < 3 months	0.974** [0.331; 1.616]	0.994** [0.328; 1.660]	1.017** [0.350; 1.683]	1.014** [0.347; 1.680]
EBCR ≥ 3 months	1.917*** [1.020; 2.815]	1.851*** [0.921; 2.782]	1.852*** [0.923; 2.781]	1.851*** [0.922; 2.781]
<i>N</i>	15,422	15,150	15,150	15,150
ATET				
EBCR < 3 months	0.887** [0.257; 1.518]	0.809* [0.154; 1.464]	0.797* [0.142; 1.451]	-
EBCR ≥ 3 months	1.857*** [0.985; 2.729]	1.743*** [0.850; 2.637]	1.733*** [0.841; 2.626]	-
<i>N</i>	15,422	15,150	15,150	-

Notes: 95% confidence intervals in brackets (based on robust standard errors). * $p < 0.05$, ** $p < 0.01$, *** $p < 0.001$. Acronyms: RA stands for regression adjustment, IPW stands for inverse probability weights, IPWRA stands for inverse-probability-weighted regression adjustment, AIPW stands for augmented inverse-probability weights.

257 The corresponding results for the EQ5D-Index measure of HRQoL are presented in Table 6.
 258 For those who participated less than the recommended three months in the EBCR program no
 259 effect was found compared with those who did not participate at all. In contrast, those who
 260 completed the full program did experience a statistically significant effect of the program
 261 compared with those who did not participate. Compared to the ATE values, the ATET values
 262 were statistically significant for both treatment groups, amounting to 0.013 points among
 263 completers and ranging from 0.009 to 0.010 points among non-completers.

264 **Table 6. Estimated changes in EQ5D-Index at one-year post-MI (ATE and ATET).**

	RA	IPW	IPWRA	AIPW
ATE				
EBCR < 3 months	0.008 [-0.000; 0.016]	0.008 [-0.001; 0.016]	0.008 [-0.000; 0.016]	0.008 [-0.000; 0.016]
EBCR ≥ 3 months	0.014* [0.002; 0.025]	0.017** [0.005; 0.029]	0.017** [0.005; 0.029]	0.017** [0.005; 0.029]
<i>N</i>	15,737	15,458	15,458	15,458
ATET				
EBCR < 3 months	0.009* [0.002; 0.017]	0.010* [0.002; 0.018]	0.010* [0.002; 0.018]	-
EBCR ≥ 3 months	0.013* [0.002; 0.024]	0.013* [0.002; 0.024]	0.013* [0.002; 0.024]	-
<i>N</i>	15,737	15,458	15,458	-

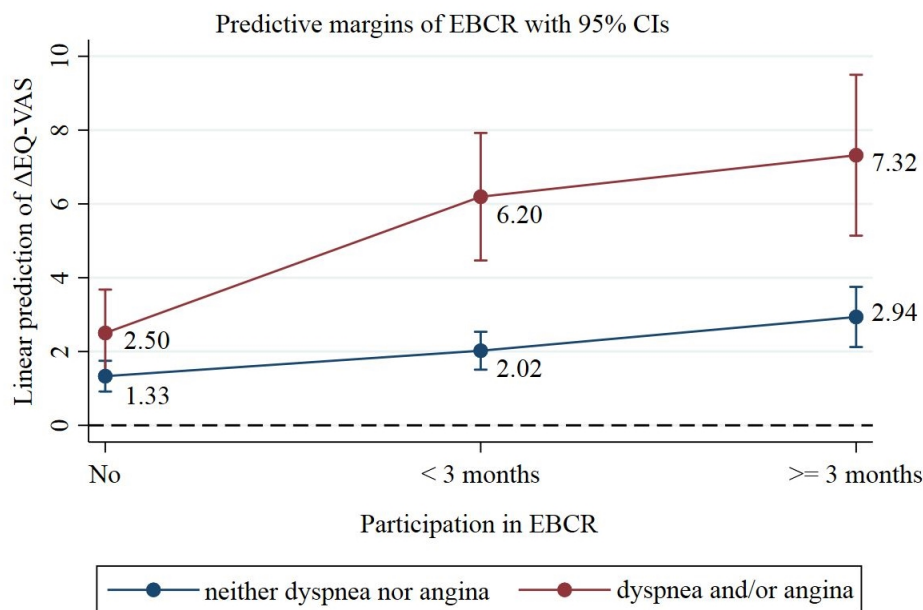
Notes: 95% confidence intervals in brackets (based on robust standard errors). * $p < 0.05$, ** $p < 0.01$, *** $p < 0.001$. See Table 5 for model acronyms.

265 To assess the validity of our treatment effect estimations, we tested whether there was an
 266 overlap in the covariate distributions between the control group and the treatment groups.
 267 Treatment group overlap is a key assumption underlying potential outcome models [34] and
 268 was found to be satisfied in the present study (Figures S1 and S2).

269 3.3.1 Heterogenous and marginal effects

270 Assuming that the effect of EBCR on HRQoL may not solely depend on the amount of time
 271 individuals spend on EBCR participation but also on other patient characteristics, we
 272 conducted interaction analyses using the base models described earlier (Table S2-S3). The
 273 results suggest that the effect of EBCR on Δ EQ-VAS did not depend on sex, age, and self-
 274 reported physical activity while being dependent on the presence of dyspnea and/or angina
 275 symptoms (Table S7). Specifically, while all measures were statistically significant, the
 276 estimated average change in EQ-VAS score appeared to be notably bigger in EBCR
 277 participants with dyspnea and/or angina symptoms (estimated change: 6.20 - 7.32 points) than

278 in EBCR participants without these symptoms (estimated change: 2.02 - 2.94 points; Figure
279 3).

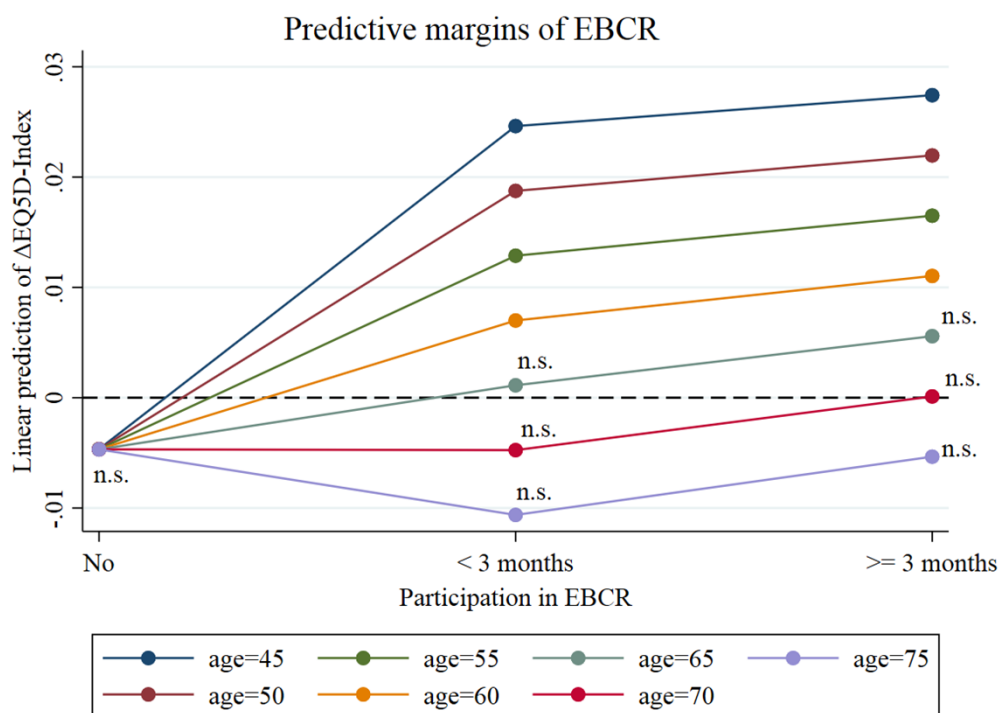


280

281 **Figure 3. Marginal effects of EBCR on Δ EQ-VAS by symptoms of dyspnea and/or**
282 **angina.**

283 Notes: Angina was considered present when symptoms were rated as class II-IV on the Canadian
284 Cardiovascular Society (CCS) grading of angina pectoris. Dyspnea was considered present when
285 symptoms were rated as class II-IV on the New York Heart (NYHA) Association Functional
286 Classification system.

287 The effect of EBCR on Δ EQ5D-Index was found to be independent of dyspnea and/or angina
288 symptoms as well as patients' self-reported physical activity levels (Table S8). In contrast, the
289 improvement in EQ5D-Index over the one-year period appeared to decline with increasing
290 age, eventually losing statistical significance among patients aged 65 years and older (Figure
291 4).



292

293 **Figure 4. Marginal effects of EBCR on Δ EQ5D-Index by age.**

294

295 3.4 Sensitivity analyses

296 Adjusting the estimated standard errors for clustering by grouping patients treated within the
 297 same clinic into the same cluster, altered some of the reported findings. While the results of
 298 the potential outcomes models suggested an effect of $EBCR \geq 3$ months on Δ EQ5D-Index
 299 (Table 6), neither $EBCR < 3$ months nor $EBCR \geq 3$ months were significantly associated with
 300 Δ EQ5D-Index after employing clustered standard errors (Table S9-S10). In contrast, the
 301 findings on Δ EQ-VAS remained unaffected by clustering (not shown). Excluding patients
 302 over 74 years of age from the analyses did not alter the reported findings in any material way
 303 (not shown). To investigate the robustness of our findings we also refitted the models while
 304 removing Δ EQ-VAS values over ± 90 and Δ EQ5D-Index values over ± 0.9 . This did not
 305 change the results in any significant way (not shown).

306 4 Discussion

307 In this study we examined the effect of EBCR on HRQoL using nationwide registry data on
308 Swedish patients with MI. For this purpose, we gradually employed more evolved regression
309 modelling techniques to address the non-randomized selection into treatment groups. In doing
310 so, this study demonstrates the ability to evaluate the effects of EBCR participation on
311 relevant outcomes in a non-experimental setting by applying a non-experimental approach.

312 The results of our treatment effect analyses suggest a positive effect of EBCR on the HRQoL
313 of patients with MI. Specifically, we found that EBCR participants experience a statistically
314 significantly greater improvement in EQ-VAS within one-year post-MI than their non-
315 participating counterparts. In finding an effect of EBCR on EQ-VAS, our findings are in line
316 with a recent RCT by Campo et al. [37]. The authors of this study assessed the effect of a
317 combined center-based and home-based exercise program among elderly patients with acute
318 coronary syndrome in Italy and found a statistically significant effect on EQ-VAS, in favor of
319 EBCR participants. In contrast, no effect of EBCR on EQ-VAS was observed in two earlier
320 Swedish RCTs [38, 39], which assessed the effect of supervised exercise on a small group of
321 elderly patients hospitalized for acute coronary events. Using almost the same sample the
322 authors found no significant effect of EBCR on EQ-VAS, neither at one-year [38] nor at 3-6
323 years follow-up [39]. The contradictory results may arise from differences in sample
324 selection, study design and statistical methods between the reported studies. For example,
325 while our study benefitted from the high coverage of the SWEDEHEART registry, the two
326 earlier Swedish RCTs included mainly elderly male patients, who were hospitalized for MI
327 but also for other coronary events, diminishing the comparability to our findings.

328 Regarding EQ5D-Index, we found that EBCR completers experienced a greater increase in
329 their EQ5D-Index score over the one-year follow-up period than their non-participating
330 counterparts. In contrast, no such effect was observed for non-completers, suggesting that the
331 effect of EBCR on HRQoL may be dose dependent. However, after adjusting the estimated

332 standard errors for clustering at the clinic level, the effect previously observed for EBCR
333 completion was no longer statistically significant. This points to the possibility that variations
334 in EBCR treatment across clinics may partly explain the relationship between EBCR and
335 HRQoL. Indeed, variations in the availability, quality, content, and duration of EBCR
336 programs in Sweden have been previously reported [40]. Therefore, the possibility of a cluster
337 effect due to intraclass correlations among patients treated within the same hospital appears
338 feasible. However, despite finding no overall effect of EBCR on EQ5D-Index after
339 accounting for differences between CR clinics, there may still be an effect of EBCR on
340 EQ5D-Index within certain subgroups. Specifically, our heterogeneous effect analyses
341 revealed statistically significant marginal effects for EQ5D-Index among younger EBCR
342 participants. This finding suggests that younger patients may derive greater HRQoL-related
343 benefits from engaging in EBCR than older patients.

344 Inconsistent results regarding the effect of EBCR on EQ5D-Index have also been reported in
345 earlier studies. Namely, while the previously described Swedish RCTs [38, 39] found no
346 effect on EQ5D-Index at one-year [38] or 3-6 years after the coronary event [39], the RCT by
347 Campo et al. [37], found significantly greater improvements in all EQ-5D dimensions except
348 for self-care among program attendees. However, Campo et al. did not report an overall
349 EQ5D-Index score and exclusively enrolled older patients with acute coronary syndrome and
350 restricted physical capabilities, limiting the comparability to our study.

351 In finding an overall effect for EQ-VAS but not for EQ5D-Index, this study aligns with
352 previous systematic reviews [14, 15] reporting contradictory findings on the effect of EBCR
353 on HRQoL, depending on the HRQoL measurement tool used and the HRQoL dimensions
354 explored. For instance, an RCT using visual analogue scales other than EQ-VAS to assess the
355 effect of EBCR on HRQoL in a sample of predominantly male patients with MI found
356 significantly greater improvements in HRQoL among EBCR participants compared to non-

357 participants [41]. Based on the findings of the present study, it therefore cannot be ruled out
358 that the estimated treatment effect of EBCR might have differed if HRQoL measurement
359 tools other than the EQ-5D-3L questionnaire had been used.

360 The current study suggests a dose-response relationship between EBCR and HRQoL with
361 completers deriving greater benefits from EBCR than non-completers. This aligns with prior
362 research reporting better HRQoL outcomes with increasing levels of activity [23]. Besides
363 treatment dosage, disease severity and patient age seem to play a role in determining the
364 extent to which EBCR impacts HRQoL. Specifically, the results of our heterogenous effect
365 analyses suggest that EBCR participants with dyspnea and/or angina symptoms experience
366 larger improvements in EQ-VAS than participants without these symptoms.

367 The more pronounced limitation in HRQoL reported at the first follow-up by participants with
368 dyspnea and/or angina symptoms as well as younger participants may be one reason for their
369 higher responsiveness to the EBCR program. On the other hand, the observed variations in
370 effect size between participant subgroups may also result from the EQ-5D-3L questionnaire
371 becoming less sensitive in detecting actual changes in HRQoL as HRQoL values increase
372 [42]. This phenomenon, referred to as “ceiling effect” [43], appears feasible in the current
373 context, given that participants with dyspnea and/or angina symptoms as well as participants
374 of younger age reported lower HRQoL values at the first follow-up visit compared to their
375 symptom-free and older counterparts. In finding no statistically significant marginal effects of
376 EBCR on EQ5D-Index among older participants, our study aligns with previous research by
377 Ståhle et al. [44] and Sandström et al. [38], who found no effect of EBCR on EQ5D-Index
378 among elderly MI patients in Sweden. In contrast Campo et al. [37] reported a significant
379 effect of EBCR on all EQ5D dimensions (except for self-care) in 70+-year-old patients with
380 acute coronary syndrome and limited physical performance. However, considering that their
381 patients had notably lower baseline HRQoL levels compared to the elderly patients in our

382 study, their patients might have been more receptive to the positive effects of EBCR, and
383 ceiling effects may have been less of a concern, possibly explaining the conflicting findings.

384 Overall, we found a statistically significant yet small effect of EBCR participation on the
385 change in EQ-VAS during follow-up. Whether this effect is clinically meaningful is difficult
386 to answer given that there is no established minimum clinically important difference (MCID)
387 for EQ-VAS in patients with MI. However, given that previous studies on patients with
388 chronic diseases other than cardiovascular conditions have reported larger MCIDs for EQ-
389 VAS, ranging from 6.9 to 10.8 points [45–47], the clinical meaningfulness is to be
390 questioned. In contrast, the effect of EBCR found among participants with dyspnea and/or
391 angina symptoms (marginal means ranging from 6.2 to 7.32 points for EQ-VAS, Figure 3)
392 approached the above mentioned MCIDs, potentially indicating clinical meaningfulness in
393 this patient subgroup. The statistically significant marginal effects of EBCR on EQ5D-Index
394 scores observed among participants aged 60 and younger were also found to be small, again
395 raising concerns about their clinical meaningfulness.

396 The current study sought to address the challenges arising from the non-randomized
397 allocation of EBCR treatment by utilizing potential outcomes models. Although these models
398 allowed for a more precise treatment effect estimation by controlling for observable factors,
399 the causal connection between EBCR and HRQoL remains unclear, as potential distortions
400 from self-selection bias cannot be completely ruled out. For instance, previous studies found
401 that indicators of socioeconomic status are associated with both EBCR attendance [48] and
402 HRQoL [49]. In the current study, we did not have access to data on socioeconomic status,
403 introducing the possibility of unobserved confounding. Therefore, more advanced statistical
404 techniques accounting for the possibility of unobserved confounding, such as instrumental
405 variable techniques, should be considered for future research.

406 A limitation of the SWEDEHEART dataset is that information on the covariates *number of*
407 *physically active days per week*, and *dyspnea and/or angina symptoms*, as well as on EQ-VAS
408 and EQ5D-Index is only collected at the 1st follow-up and 2nd follow-up visit, while no
409 measurements for these variables are performed during hospitalization. Moreover, at the time
410 of the study information on when patients actually started their EBCR program was not
411 collected in SWEDEHEART [13]. In benefiting from the high coverage of SWEDEHEART,
412 this study more closely reflected the actual MI population than previous highly selective
413 RCTs. Nevertheless, it should be noted that our findings may not be generalizable to patients
414 over 74 years of age, due to the age limit for mandatory registration of patients in
415 SWEDEHEART being set at 74 years during the study period [50].

416 **5 Conclusions**

417 Participation in EBCR after suffering from an MI may improve patients' HRQoL, especially
418 in younger patients and those with symptoms of dyspnea and/or angina. By applying rigorous
419 quasi-experimental methods to readily available register data, this study added to the existing
420 evidence of the effect of EBCR on patients' HRQoL after MI, while aiming to address the
421 methodological challenges arising from self-selection into EBCR. Given the observed
422 variability in the effect of EBCR on HRQoL across patient subgroups, further research into
423 the impact of EBCR after MI is warranted. To further advance our understanding of this topic,
424 future studies should address the methodological shortcomings of previous research, such as
425 limited generalizability and selection bias. Importantly, our study demonstrates the ability to
426 evaluate the effects of a program such as EBCR to which patients self-select using broadly
427 available register data.

428 **6 References**

- 429 1. Johansson S, Rosengren A, Young K, Jennings E. Mortality and morbidity trends after the
430 first year in survivors of acute myocardial infarction: a systematic review. *BMC*
431 *Cardiovasc Disord.* 2017;17:53. doi:10.1186/s12872-017-0482-9.
- 432 2. Dodson JA, Arnold SV, Reid KJ, Gill TM, Rich MW, Masoudi FA, et al. Physical
433 function and independence 1 year after myocardial infarction: observations from the
434 Translational Research Investigating Underlying disparities in recovery from acute
435 Myocardial infarction: Patients' Health status registry. *Am Heart J.* 2012;163:790–6.
436 doi:10.1016/j.ahj.2012.02.024.
- 437 3. Mollon L, Bhattacharjee S. Health related quality of life among myocardial infarction
438 survivors in the United States: a propensity score matched analysis. *Health Qual Life*
439 *Outcomes.* 2017;15:235. doi:10.1186/s12955-017-0809-3.
- 440 4. Schweikert B, Hunger M, Meisinger C, König H-H, Gapp O, Holle R. Quality of life
441 several years after myocardial infarction: comparing the MONICA/KORA registry to the
442 general population. *Eur Heart J.* 2009;30:436–43. doi:10.1093/eurheartj/ehn509.
- 443 5. Hays RD, Reeve BB. Measurement and Modeling of Health-Related Quality of Life. In:
444 Killewo J, Heggenhougen HK, Quah SR, editor. *Epidemiology and Demography in*
445 *Public Health.* San Diego: Academic Press; 2010. 195–205.
- 446 6. Myers V, Gerber Y, Benyamini Y, Goldbourt U, Drory Y. Post-myocardial infarction
447 depression: increased hospital admissions and reduced adoption of secondary prevention
448 measures--a longitudinal study. *J Psychosom Res.* 2012;72:5–10.
449 doi:10.1016/j.jpsychores.2011.09.009.
- 450 7. Pocock S, Brieger DB, Owen R, Chen J, Cohen MG, Goodman S, et al. Health-related
451 quality of life 1-3 years post-myocardial infarction: its impact on prognosis. *Open Heart*
452 2021; 8:e001499. doi:10.1136/openhrt-2020-001499.

- 453 8. Meijer A, Conradi HJ, Bos EH, Anselmino M, Carney RM, Denollet J, et al. Adjusted
454 prognostic association of depression following myocardial infarction with mortality and
455 cardiovascular events: individual patient data meta-analysis. *Br J Psychiatry*.
456 2013;203:90–102. doi:10.1192/bjp.bp.112.111195.
- 457 9. Soloveva A, Gale CP, Naung Tun H, Hurdus B, Aktaa S, Palin V, et al. Associations of
458 health-related quality of life with major adverse cardiovascular and cerebrovascular
459 events for individuals with ischaemic heart disease: systematic review, meta-analysis and
460 evidence mapping. *Open Heart* 2023; 10:e002452. doi:10.1136/openhrt-2023-002452.
- 461 10. Visseren FLJ, Mach F, Smulders YM, Carballo D, Koskinas KC, Bäck M, et al. 2021
462 ESC Guidelines on cardiovascular disease prevention in clinical practice. *Eur Heart J*.
463 2021;42:3227–337. doi:10.1093/eurheartj/ehab484.
- 464 11. Michelsen HÖ, Henriksson P, Wallert J, Bäck M, Sjölin I, Schlyter M, et al.
465 Organizational and patient-level predictors for attaining key risk factor targets in cardiac
466 rehabilitation after myocardial infarction: The Perfect-CR study. *Int J Cardiol*.
467 2023;371:40–8. doi:10.1016/j.ijcard.2022.09.012.
- 468 12. Dibben G, Faulkner J, Oldridge N, Rees K, Thompson DR, Zwisler A-D, Taylor RS.
469 Exercise-based cardiac rehabilitation for coronary heart disease. *Cochrane Database Syst*
470 *Rev*. 2021;11:CD001800. doi:10.1002/14651858.CD001800.pub4.
- 471 13. Wittboldt S, Leosdottir M, Ravn Fischer A, Ekman B, Bäck M. Exercise-based cardiac
472 rehabilitation after acute myocardial infarction in Sweden - standards, costs, and
473 adherence to European guidelines (The Perfect-CR study). *Physiother Theory Pract*.
474 2024;40:366–76. doi:10.1080/09593985.2022.2114052.
- 475 14. Candelaria D, Randall S, Ladak L, Gallagher R. Health-related quality of life and
476 exercise-based cardiac rehabilitation in contemporary acute coronary syndrome patients: a
477 systematic review and meta-analysis. *Qual Life Res*. 2020;29:579–92.
478 doi:10.1007/s11136-019-02338-y.

- 479 15. Mansilla-Chacón M, Gómez-Urquiza JL, Martos-Cabrera MB, Albendín-García L,
480 Romero-Béjar JL, La Cañadas-De Fuente GA, Suleiman-Martos N. Effects of Supervised
481 Cardiac Rehabilitation Programmes on Quality of Life among Myocardial Infarction
482 Patients: A Systematic Review and Meta-Analysis. *J Cardiovasc Dev Dis.* 2021;8:166.
483 doi:10.3390/jcdd8120166.
- 484 16. Francis T, Kabboul N, Rac V, Mitsakakis N, Pechlivanoglou P, Bielecki J, et al. The
485 Effect of Cardiac Rehabilitation on Health-Related Quality of Life in Patients With
486 Coronary Artery Disease: A Meta-analysis. *Can J Cardiol.* 2019;35:352–64.
487 doi:10.1016/j.cjca.2018.11.013.
- 488 17. Gertler PJ, Martinez S, Premand P, Rawlings LB, Vermeersch CMJ. *Impact Evaluation in*
489 *Practice.* 2nd ed. Washington DC: World Bank; 2016.
- 490 18. Glass TA, Goodman SN, Hernán MA, Samet JM. Causal inference in public health. *Annu*
491 *Rev Public Health.* 2013;34:61–75. doi:10.1146/annurev-publhealth-031811-124606.
- 492 19. Hernán MA. The C-Word: Scientific Euphemisms Do Not Improve Causal Inference
493 From Observational Data. *Am J Public Health.* 20;108:616–9.
494 doi:10.2105/AJPH.2018.304337.
- 495 20. Hurdus B, Munyombwe T, Dondo TB, Aktaa S, Oliver G, Hall M, et al. Association of
496 cardiac rehabilitation and health-related quality of life following acute myocardial
497 infarction. *Heart.* 2020;106:1726–31. doi:10.1136/heartjnl-2020-316920.
- 498 21. Kureshi F, Kennedy KF, Jones PG, Thomas RJ, Arnold SV, Sharma P, et al. Association
499 Between Cardiac Rehabilitation Participation and Health Status Outcomes After Acute
500 Myocardial Infarction. *JAMA Cardiol.* 2016;1:980–8. doi:10.1001/jamacardio.2016.3458.
- 501 22. Sinnadurai S, Sowa P, Jankowski P, Gaşior Z, Kosior DA, Haberka M, et al. Effects of
502 cardiac rehabilitation on risk factor management and quality of life in patients with
503 ischemic heart disease: a multicenter cross-sectional study. *Pol Arch Intern Med.*
504 2021;131:617–25. doi:10.20452/pamw.16019.

- 505 23. Huber A, Höfer S, Saner H, Oldridge N. A little is better than none: the biggest gain of
506 physical activity in patients with ischemic heart disease. *Wien Klin Wochenschr.*
507 2020;132:726–35. doi:10.1007/s00508-020-01767-x.
- 508 24. Jernberg T, Held C, Johanson P, Hambraeus K, Cider Å, Svennberg L, et al.
509 SWEDHEART: Annual report 2012. Stockholm: Karolinska University Hospital; 2013.
- 510 25. Hambraeus K, Leósdóttir M, Nilsson L. SEPHIA Secondary prevention following
511 coronary intensive care. In: SWEDHEART: Annual report 2013. Stockholm; 2014.
512 p. 42–57.
- 513 26. EuroQol Research Foundation. EQ-5D-3L User Guide [Internet]. Rotterdam: EuroQol
514 Research Foundation; 2018 [Cited 2024 Dec 12]. Available
515 from: <https://euroqol.org/publications/user-guides/>.
- 516 27. Nowels D, McGloin J, Westfall JM, Holcomb S. Validation of the EQ-5D quality of life
517 instrument in patients after myocardial infarction. *Qual Life Res.* 2005;14:95–105.
518 doi:10.1007/s11136-004-0614-4.
- 519 28. Janssen B, Szende A. Population Norms for the EQ-5D. In: Szende A, Janssen B, Cabases
520 J, editors. *Self-Reported Population Health: An International Perspective based on EQ-*
521 *5D.* Dordrecht (NL): Springer; 2014. p. 19–30.
- 522 29. Borg S, Öberg B, Leosdottir M, Lindolm D, Nilsson L, Bäck M. Factors associated with
523 non-attendance at exercise-based cardiac rehabilitation. *BMC Sports Sci Med Rehabil.*
524 2019;11:13. doi:10.1186/s13102-019-0125-9.
- 525 30. Campeau L. Letter: Grading of angina pectoris. *Circulation.* 1976;54:522–3.
526 doi:10.1161/circ.54.3.947585.
- 527 31. American Heart Association. Classes and Stages of Heart Failure [Internet]. Dallas:
528 American Heart Association; [last reviewed 2023 Jun 7; Cited 2024 Dec 12]. Available
529 from: [https://www.heart.org/en/health-topics/heart-failure/what-is-heart-failure/classes-](https://www.heart.org/en/health-topics/heart-failure/what-is-heart-failure/classes-of-heart-failure)
530 [of-heart-failure.](https://www.heart.org/en/health-topics/heart-failure/what-is-heart-failure/classes-of-heart-failure)

- 531 32. Bäck M, Öberg B, Krevers B. Important aspects in relation to patients' attendance at
532 exercise-based cardiac rehabilitation - facilitators, barriers and physiotherapist's role: a
533 qualitative study. *BMC Cardiovasc Disord.* 2017;17:77. doi:10.1186/s12872-017-0512-7.
- 534 33. Kang K, Gholizadeh L, Inglis SC, Han H-R. Correlates of health-related quality of life in
535 patients with myocardial infarction: A literature review. *Int J Nurs Stud.* 2017;73:1–16.
536 doi:10.1016/j.ijnurstu.2017.04.010.
- 537 34. Wooldridge JM. *Econometric Analysis of Cross Section and Panel Data.* 2nd ed.
538 Cambridge: The MIT Press; 2010.
- 539 35. StataCorp. *STATA Treatment-Effects Reference Manual: Potential*
540 *Outcomes/Counterfactual outcomes: Release 17.* College Station Texas: StataCorp LLC;
541 2021.
- 542 36. Rubin DB. Causal Inference Using Potential Outcomes. *Journal of the American*
543 *Statistical Association.* 2005;100:322–31. doi:10.1198/016214504000001880.
- 544 37. Campo G, Tonet E, Chiaranda G, Sella G, Maietti E, Bugani G, et al. Exercise
545 intervention improves quality of life in older adults after myocardial infarction:
546 randomised clinical trial. *Heart.* 2020;106:1658–64. doi:10.1136/heartjnl-2019-316349.
- 547 38. Sandström L, Ståhle A. Rehabilitation of elderly with coronary heart disease –
548 Improvement in quality of life at a low cost. *Advances in Physiotherapy.* 2005;7:60–6.
549 doi:10.1080/14038190510010287.
- 550 39. Hage C, Mattsson E, Ståhle A. Long-term effects of exercise training on physical activity
551 level and quality of life in elderly coronary patients--a three- to six-year follow-up.
552 *Physiother Res Int.* 2003;8:13–22. doi:10.1002/pri.268.
- 553 40. Ögmundsdottir Michelsen H, Sjölin I, Schlyter M, Hagström E, Kiessling A, Henriksson
554 P, et al. Cardiac rehabilitation after acute myocardial infarction in Sweden - evaluation of
555 programme characteristics and adherence to European guidelines: The Perfect Cardiac

- 556 Rehabilitation (Perfect-CR) study. *Eur J Prev Cardiol.* 2020;27:18–27.
557 doi:10.1177/2047487319865729.
- 558 41. Dugmore LD, Tipson RJ, Phillips MH, Flint EJ, Stentiford NH, Bone MF, Littler WA.
559 Changes in cardiorespiratory fitness, psychological wellbeing, quality of life, and
560 vocational status following a 12 month cardiac exercise rehabilitation programme. *Heart.*
561 1999;81:359–66. doi:10.1136/hrt.81.4.359.
- 562 42. Christiansen ASJ, Møller MLS, Kronborg C, Haugan KJ, Køber L, Højberg S, et al.
563 Comparison of the three-level and the five-level versions of the EQ-5D. *Eur J Health*
564 *Econ.* 2021;22:621–8. doi:10.1007/s10198-021-01279-z.
- 565 43. Garin O. Ceiling Effect. In: Michalos AC, editor. *Encyclopedia of Quality of Life and*
566 *Well-Being Research.* Dordrecht: Springer; 2014. p. 631–633. doi:10.1007/978-94-007-
567 0753-5_296.
- 568 44. Ståhle A, Mattsson E, Rydén L, Undén A, Nordlander R. Improved physical fitness and
569 quality of life following training of elderly patients after acute coronary events. A 1 year
570 follow-up randomized controlled study. *Eur Heart J.* 1999;20:1475–84.
571 doi:10.1053/euhj.1999.1581.
- 572 45. Nolan CM, Longworth L, Lord J, Canavan JL, Jones SE, Kon SSC, Man WD-C. The EQ-
573 5D-5L health status questionnaire in COPD: validity, responsiveness and minimum
574 important difference. *Thorax.* 2016;71:493–500. doi:10.1136/thoraxjnl-2015-207782.
- 575 46. Chen P, Lin K-C, Liing R-J, Wu C-Y, Chen C-L, Chang K-C. Validity, responsiveness,
576 and minimal clinically important difference of EQ-5D-5L in stroke patients undergoing
577 rehabilitation. *Qual Life Res.* 2016;25:1585–96. doi:10.1007/s11136-015-1196-z.
- 578 47. Del Corral T, Fabero-Garrido R, Plaza-Manzano G, Navarro-Santana MJ, Fernández-de-
579 Las-Peñas C, López-de-Uralde-Villanueva I. Minimal Clinically Important Differences in
580 EQ-5D-5L Index and VAS after a Respiratory Muscle Training Program in Individuals

- 581 Experiencing Long-Term Post-COVID-19 Symptoms. *Biomedicines*. 2023;11:2522.
582 doi:10.3390/biomedicines11092522.
- 583 48. Ohm J, Skoglund PH, Häbel H, Sundström J, Hambraeus K, Jernberg T, Svensson P.
584 Association of Socioeconomic Status With Risk Factor Target Achievements and Use of
585 Secondary Prevention After Myocardial Infarction. *JAMA Netw Open*. 2021;4:e211129.
586 doi:10.1001/jamanetworkopen.2021.1129.
- 587 49. Skodova Z, Nagyova I, van Dijk JP, Sudzinova A, Vargova H, Rosenberger J, et al.
588 Socioeconomic inequalities in quality of life and psychological outcomes among cardiac
589 patients. *Int J Public Health*. 2009;54:233–40. doi:10.1007/s00038-009-7086-9.
- 590 50. Hambraeus K, Leósdóttir M, Nilsson L. SEPHIA Secondary prevention following
591 coronary intensive care. In: Jernberg T, editor. *SWEDEHEART: Annual report 2013*.
592 Stockholm; 2014. p. 42–57.
593