

## VTE incidence shortens survival in IDH-WT glioblastoma

Anthony R. Sloan<sup>1,2\*</sup>, Alan J. Gordillo<sup>1,3,\*</sup>, Austin Kennemer<sup>3\*</sup>, Alok A. Khorana<sup>2,3,5</sup>, Craig Horbinski<sup>6</sup>, David C. Kaelber<sup>7</sup>, Scott J. Cameron<sup>1,2,8</sup>, Justin D. Lathia<sup>1,2,5,9</sup>

<sup>1</sup>Lerner Research Institute, Cleveland Clinic, Cleveland, Ohio, USA

<sup>2</sup>Case Comprehensive Cancer Center, Cleveland, Ohio, USA

<sup>3</sup>Cleveland Clinic Lerner College of Medicine of Case Western Reserve University, Cleveland, Ohio, USA

<sup>4</sup>Case Western Reserve University School of Medicine, Cleveland, Ohio, USA

<sup>5</sup>Taussig Cancer Institute, Cleveland Clinic, Cleveland, Ohio, USA

<sup>6</sup>Department of Pathology, Northwestern University, Chicago, Illinois, USA

<sup>7</sup>The Center for Clinical Informatics Research and Education, The MetroHealth System and the Departments of Internal Medicine, Pediatrics, and Population and Quantitative Health Sciences, Case Western Reserve University, Cleveland, Ohio, USA

<sup>8</sup>Department of Cardiovascular Medicine Section of Vascular Medicine, Cleveland Clinic, Cleveland, Ohio, USA

<sup>9</sup>Rose Ella Burkhardt Brain Tumor & Neuro-Oncology Center, Cleveland Clinic, Cleveland, Ohio, USA

### Corresponding author:

Dr. Justin D. Lathia  
9500 Euclid Ave., NE3-202  
Cleveland, OH 44195  
Tel: 216-318-7084  
Email: [lathiaj@ccf.org](mailto:lathiaj@ccf.org)

**Running title:** Thrombosis risk portends poor survival in glioblastoma

**Keywords:** glioblastoma, thrombosis

## **Abstract:**

**Background:** Venous thromboembolisms (VTE's) are the second leading cause of death in cancer patients. While previous analyses have demonstrated VTE rates are greater in GBM patients using smaller patient cohorts in high-grade glioma, since the release of the update 5<sup>th</sup> edition of the World Health Organization (WHO) classification a systematic analysis in a large-scale cohort of patients with IDH-wildtype GBM with clinical outcomes is lacking.

**Methods:** This study utilizes the online database, TriNetx, to build patient cohorts for outcomes analysis. TriNetX is a database comprised of over 50 healthcare organization patient information that is quarryable by CPT, ICD, RxNorm, and other proprietary codes. Patient cohort demographics were used for propensity score matching. Risk ratios, odds ratios, hazard ratios, and Kaplan Meier curves were utilized for primary outcomes including survival and time-to-event analyses.

**Results:** 24% of patients with GBM experienced at least 1 VTE or PE after their diagnosis. Compared to a population of patients with no cancer history with an index event of an inpatient visit, patients with GBM were at 20.4 (12.23-34.17) and 5.96 (3.85-9.23) times higher risk of experiencing a VTE/PE at 1- and 5-year follow-up, respectively. Sex differences were not seen between VTE/PE rates and survival after VTE/PE at 1- and 5-year follow-up ( $p > 0.05$ ). Lastly, patients with GBM and a VTE/PE after diagnosis experienced worse survival at 1- and 5-year follow-up compared to those without a VTE/PE ( $p < 0.0001$  and  $p = 0.0014$ , respectively).

**Conclusions:** Patients with GBM experience increased risks of thrombotic events after diagnosis. These risks are not sex-dependent but do affect overall survival.

Cancer-related thrombosis, specifically venous thromboembolism (VTE) consisting of either one of—or both—deep vein thrombosis (DVT) or pulmonary embolism (PE), is a common co-morbid condition in patients with cancer<sup>1</sup>. Isocitrate dehydrogenase (IDH) wild-type glioblastoma (GBM) is an underappreciated disease with increased VTE risk. GBM is highly-vascularized and produces angiogenic factors, with 92% of GBM resections showing histological evidence of intravascular thrombosis; this is greater than any other CNS tumor<sup>2</sup>. Moreover, thrombosis-related signaling due to aberrant platelet activation has been reported in GBM<sup>3,4</sup>, underscoring these mechanisms as potential drivers of GBM growth.

While previous analyses have demonstrated VTE rates are greater in GBM patients using smaller patient cohorts in high-grade glioma<sup>5-8</sup>, since the release of the update 5<sup>th</sup> edition of the World Health Organization (WHO) classification a systematic analysis in a large-scale cohort of patients with IDH-wildtype GBM with clinical outcomes is lacking. To address this unanswered question, we leveraged the Research USA Minimal Data Shift network in the TriNetX platform composed of aggregated, de-identified electronic health record data of 93 million from various healthcare organizations (HCOs) nationwide. Inclusion criteria for general GBM comparisons included diagnosis of IDH-wildtype GBM. Healthy patient comparison inclusion criteria were an in-patient hospital stay for non-acute causes with no neoplasm diagnosis. Index events were queried such that their occurrence must fall within the years 2000-2023 for 1-year follow-up data and 2000-2019 for 5-year follow-up data. Queries were assessed on 10/2024. VTE was selected as any instance of the ICD-10-CM codes I82 (other venous embolism and thrombosis) and I26 (PE). Log-Rank analysis was performed using sex-specific Kaplan Meier survival curve models adjusted for age at index event, sex, and age at diagnosis.

The study population comprised 1535 healthy patients, 1496 patients diagnosed with IDH-wildtype GBM with a VTE, and a cohort of 1,138 patients with IDH-wildtype GBM with no VTE. Propensity-matched clinical cases were evaluated based on age at index, race, sex, ethnicity, metabolic disorders, hypertension, ischemic heart disease, and diabetes. After

propensity-matching, each cohort was well-balanced with standardized differences with  $p < 0.01$ . Patients with GBM had a 24% incidence of VTE compared to 2.3% incidence for inpatient hospitalizations for all causes (OR=13.3, 95% CI 9.3-19.0). At 1 year follow up, GBM patients had a 19.1% rate of VTE compared to 1.394% in the healthy non-neoplastic population (OR=25.3, 95%CI = 15.0-42.8). At 5 years follow up, GBM patients had a 21.9% rate of VTE compared to 3.2% in the healthy non-neoplastic population (OR = 7.5, 95% CI = 4.7-12.0).

At both the 1 and 5 years following GBM diagnosis, after propensity score matching as described above, patients with a VTE had a significantly higher risk for all-cause mortality compared to patients without a clinical diagnosis of VTE (**Fig. 1**, HR=0.5, 95% CI = 0.4-0.7; HR=0.6, 95% CI = 0.5-0.94). Of note, there was no significant difference in mortality risk for males and females 1 year following GBM diagnosis or 5 years following GBM diagnosis.

The results of this analysis confirm greater than 20% of IDH-WT GBM patients develop VTE. Separate analysis with unique cohorts was done to compare methylation of the O<sup>6</sup>-methylguanine-DNA methyltransferase (MGMT) promoter status, sex, and IDH status, which were not predictive of VTE incidence. . We acknowledge a prior study using LASSO did indicate a protective effect of IDH and MGMT methylation status<sup>5</sup>. A limitation of this study—or any study relying on administrative databases—is the possibility of incorrect coding for diagnoses at the time of clinical care.

A limitation to this analysis using TriNetX platform is lack of information regarding cause of mortality, which future studies should address. However, a previous report has demonstrated that although VTE incidence is a leading cause of death in patients with GBM, only 1% of GBM-related deaths are a consequence of VTE, whereas a 90% of patients with GBM and a VTE die because of tumor progression<sup>6</sup>. Mechanistic data are needed to clearly understand how platelets and the coagulation cascade are primed toward a thrombotic state to identify how these mechanisms uniquely contribute to GBM disease progression, identifying therapeutic targets.



**Funding:** This work is supported by a cancer biology training grant NIH T32 CA059366 (To ARS), Ruth L. Kirschstein Postdoctoral NRSA NIH F32 CA287655 (To ARS), and the Midwest Brain Tumor Foundation Postdoctoral Fellowship (To ARS), NIH HL158801 (to SJC). This work was also supported by the Lerner Research Institute (SJC, JDL) and Case Comprehensive Cancer Center (JDL)

**Conflicts of interest:** The author declare no conflicts of interest. JDL is listed as an inventor on intellectual property related to cancer therapies, but this is not directly relevant to this work.

**Authorship:** ARS, JDL conceptualized the project; ARS, AJG, AK completed the analysis; All authors participated in the writing and review of the manuscript.

**Acknowledgements:** The authors thank Dr. Erin Mulkearns-Hubert for editorial assistance and Dr. Reza Khatib for his inspiration and support.

## References

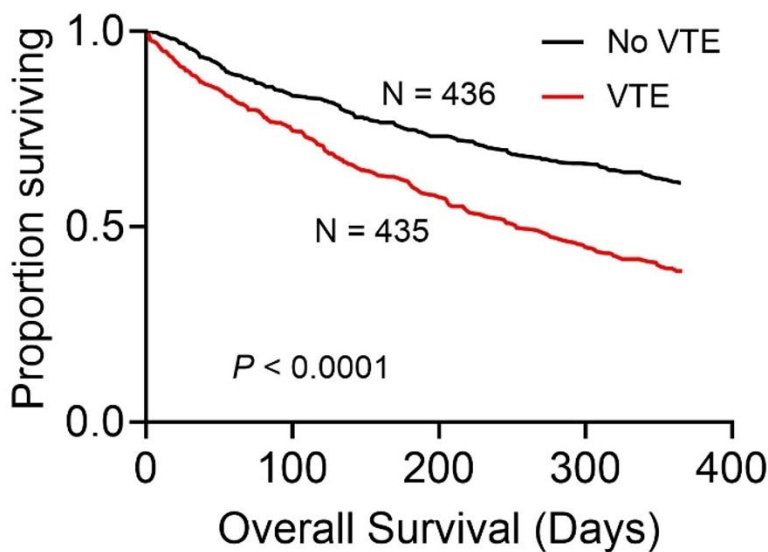
1. Khorana AA, Mackman N, Falanga A, Pabinger I, Noble S, Ageno W, Moik F, Lee AYY. Cancer-associated venous thromboembolism. *Nat Rev Dis Primers*. 2022;8(1):11. Epub 20220217. doi: 10.1038/s41572-022-00336-y. PubMed PMID: 35177631.
2. Tehrani M, Friedman TM, Olson JJ, Brat DJ. Intravascular thrombosis in central nervous system malignancies: a potential role in astrocytoma progression to glioblastoma. *Brain Pathol*. 2008;18(2):164-71. Epub 2007/12/21. doi: 10.1111/j.1750-3639.2007.00108.x. PubMed PMID: 18093251; PMCID: PMC2610479.
3. Jo J, Diaz M, Horbinski C, Mackman N, Bagley S, Broekman M, Rak J, Perry J, Pabinger I, Key NS, Schiff D. Epidemiology, biology, and management of venous thromboembolism in gliomas: An interdisciplinary review. *Neuro Oncol*. 2023;25(8):1381-94. doi: 10.1093/neuonc/noad059. PubMed PMID: 37100086; PMCID: PMC10398809.
4. Sloan AR, Lee-Poturski C, Hoffman HC, Harris PL, Elder TE, Richardson B, Kerstetter-Fogle A, Cioffi G, Schroer J, Desai A, Cameron M, Barnholtz-Sloan J, Rich J, Jankowsky E, Sen Gupta A, Sloan AE. Glioma stem cells activate platelets by plasma-independent thrombin production to promote glioblastoma tumorigenesis. *Neuro-Oncology Advances*. 2022;4(1). doi: 10.1093/noajnl/vdac172.
5. Burdett KB, Unruh D, Drumm M, Steffens A, Lamano J, Judkins J, Schwartz M, Javier R, Amidei C, Lipp ES, Peters KB, Lai A, Eldred BSC, Heimberger AB, McCortney K, Scholtens DM, Horbinski C. Determining venous thromboembolism risk in patients with adult-type diffuse glioma. *Blood*. 2023;141(11):1322-36. doi: 10.1182/blood.2022017858. PubMed PMID: 36399711; PMCID: PMC10082363.
6. Eisele A, Seystahl K, Rushing EJ, Roth P, Le Rhun E, Weller M, Gramatzki D. Venous thromboembolic events in glioblastoma patients: An epidemiological study. *Eur J Neurol*. 2022;29(8):2386-97. Epub 20220531. doi: 10.1111/ene.15404. PubMed PMID: 35545894; PMCID: PMC9543144.
7. Streiff MB, Ye X, Kickler TS, Desideri S, Jani J, Fisher J, Grossman SA. A prospective multicenter study of venous thromboembolism in patients with newly-diagnosed high-grade glioma: hazard rate and risk factors. *J Neurooncol*. 2015;124(2):299-305. Epub 20150623. doi: 10.1007/s11060-015-1840-z. PubMed PMID: 26100546; PMCID: PMC4659392.
8. Al Megren M, De Wit C, Al Qahtani M, Le Gal G, Carrier M. Management of venous thromboembolism in patients with glioma. *Thromb Res*. 2017;156:105-8. Epub 20170608. doi: 10.1016/j.thromres.2017.06.010. PubMed PMID: 28624717.

**Figure Legend:**

Fig. 1 (A) 1-year survival of IDH-wt GBM patients diagnosed with a VTE and those with no VTE. (B) 5-year survival of IDH-wt GBM patients diagnosed with a VTE and those with no VTE.



A

**1 Year Follow-up**

B

**5 Year Follow-up**