

1 **Higher Brain Grey Matter Density in Mild to Moderate Chronic Low Back**  
2 **Pain Patients**

3

4

5 Monica Sean<sup>1,2</sup>, Samantha Cote<sup>1,5</sup>, Alexia-Coulombe-Lévêque<sup>1,4</sup>, Julia Huck<sup>1,3</sup>,  
6 Marylie Martel<sup>1</sup>, Guillaume Léonard<sup>1,4,7</sup>, Kevin Whittingstall<sup>1,3,6</sup>, Pascal  
7 Tétreault<sup>1,2,6</sup>.

8

9 <sup>1</sup>Université de Sherbrooke, Faculty of medicine and health sciences, Sherbrooke,  
10 Québec, Canada

11 <sup>2</sup>Department of Anesthesiology, Sherbrooke, Québec, Canada

12 <sup>3</sup>Department of Diagnostic Radiology, Sherbrooke, Québec, Canada

13 <sup>4</sup>School of Rehabilitation, Sherbrooke, Québec, Canada

14 <sup>5</sup>Departement of Pediatrics, Sherbrooke, Québec, Canada

15 <sup>6</sup>Centre de recherche du CHUS, Sherbrooke, Québec, Canada

16 <sup>7</sup>Research Centre on Aging, Sherbrooke, Québec Canada.

17

18 **\*Corresponding Author:** [Pascal.Tetreault@USherbrooke.ca](mailto:Pascal.Tetreault@USherbrooke.ca)

19 Pascal Tétreault, PhD, Assistant Professor

20 3001 12e Avenue Nord, J1H 5N4, Sherbrooke, Québec, Canada

21 819-821-8000 (ext: 74502)

22

23 **Data availability:** Our data are available from the corresponding author upon  
24 request.

25

26

27 **Number of figures: 5**

28 **Number of tables: 2**

29 **Number of supplementary: 9**

30

31

32 **Abstract**

33

34 Chronic low back pain (CLBP) is the leading cause of disability worldwide.  
35 Structural abnormalities in the lumbar region rarely account for the pain symptoms  
36 observed. In contrast, the brain plays a central role in chronic pain, with several  
37 studies suggesting that chronic pain may result from the persistence of pain  
38 memories and/or the inability to extinguish these memories following an initial  
39 inciting injury. Previous research has reported a reduction in grey matter density  
40 (GMD) in CLBP patients, as measured by magnetic resonance imaging (MRI).  
41 Notably, lower GMD has been observed in patients with moderate to severe CLBP  
42 who are undergoing prescribed pharmacological treatments. However, it remains  
43 unclear whether these differences in GMD could be associated with a less severe  
44 condition.

45

46 This study aimed to investigate whether GMD is altered in a cohort with mild to  
47 moderate CLBP symptoms, and who have not been prescribed pharmacological  
48 treatments. To achieve this, we acquired T1-weighted MRI scans from 25 healthy  
49 controls (HC) and 27 untreated individuals with mild to moderate CLBP. Scans  
50 were taken at baseline, 2 months, and 4 months after baseline. GMD analysis was  
51 carried out using the FMRIB Software.

52

53 Our results consistently showed higher GMD in the CLBP group compared to HC.  
54 These findings suggest that the observed alterations in GMD may be related to the  
55 condition itself, and can occur even in patients with milder symptoms and better  
56 physical function, without the influence of opioids, anticonvulsants, or  
57 antidepressants. Given that our participants differ from those typically studied in  
58 the literature, our results imply that they may be in a distinct brain state relative to  
59 the condition. Further research is needed to elucidate the underlying biological  
60 mechanisms and confirm whether these brain alterations are indeed a  
61 characteristic feature of CLBP.

62

63

64

65

## 66 **1. Introduction**

67 Approximately one-fifth of Canadians experience chronic pain (CP) (Canadian  
68 Pain Task Force, 2019); across all CP conditions, chronic low back pain (CLBP)  
69 represents one of the leading causes of disability worldwide (Vos et al., 2017). In  
70 90% of CLBP cases, the pain cannot be linked to a specific musculoskeletal cause  
71 (Finucane et al., 2020; Kahere & Ginindza, 2020; Kasch et al., 2022a; Maher et  
72 al., 2017; Nijs et al., 2024). Several studies have found no association between  
73 imaging abnormalities of the dorsal-lumbar regions and the presence of pain  
74 (Brinjikji, Diehn, et al., 2015; Brinjikji, Luetmer, et al., 2015; Burgstaller et al., 2016;  
75 Hall et al., 2021; Kasch et al., 2022b). This is likely due to the fact that several  
76 morphological abnormalities in the spine can be present in individuals with and  
77 without pain; representing normal anatomical variations or nonpathological  
78 degenerative changes associated with aging that begin in early adulthood  
79 (Benoist, 2003; Brinjikji, Luetmer, et al., 2015; Parenteau et al., 2021; Wocial et  
80 al., 2021).

81

82 The brain plays a central role in the perception and processing of pain, particularly  
83 in the development of CP (Apkarian, 2008; Bushnell et al., 2013; Garland, 2012).  
84 Several researchers suggest that CP may result from the persistence of pain  
85 memories and/or the inability to extinguish the memory of pain triggered by an  
86 initial injury (Apkarian, 2008; Mansour et al., 2014; McCarberg & Peppin, 2019;  
87 Phelps et al., 2021). Indeed, numerous studies using magnetic resonance imaging  
88 (MRI) have reported structural brain abnormalities in individuals with CLBP  
89 (Apkarian et al., 2009; Baliki et al., 2011; Biggs et al., 2022; Makary et al., 2020;  
90 Mansour et al., 2014; Phelps et al., 2021; Simons et al., 2014; Vachon-Preseu,  
91 2018; Yi & Zhang, 2011). Most studies on grey matter density (GMD) have  
92 reported lower GMD in patients with CLBP (Apkarian et al., 2004; Baliki et al.,  
93 2011; Ivo et al., 2013; Schmidt-Wilcke et al., 2006; Ung et al., 2014; Yu et al.,

94 2021). These studies, however, primarily focused on individuals with moderate to  
95 severe pain or those who used prescribed pharmacological treatments to manage  
96 their symptoms. Since these treatments are known to influence cerebral grey  
97 matter volume (Puiu et al., 2016; Russell et al., 2018; Younger et al., 2011), it is  
98 challenging to determine whether the observed reductions in GMD are due to the  
99 CP condition itself or the effects of these centrally acting pharmacological agents.  
100 For example, Younger et al. (2011) demonstrated long-lasting reduced grey matter  
101 volume in several brain regions after just one month of morphine treatment  
102 (Younger et al., 2011). Moreover, these studies typically involved patients with  
103 more severe pain symptoms, raising the question of whether similar changes in  
104 grey matter occur in individuals with milder symptoms.

105

106 We conducted an observational study to assess pain symptoms at three time  
107 points over a 4-month period in individuals with CLBP who had never used opioids,  
108 anticonvulsants, or antidepressants, as well as in HC. The results from pain  
109 questionnaires, which were analyzed and discussed in a previous publication  
110 (Sean et al., 2024), revealed that our study participants experienced mild to  
111 moderate pain symptoms. This presented an opportunity to investigate grey matter  
112 density (GMD) in a cohort with milder symptoms and better physical function than  
113 those typically studied in the literature.

114

115 In the present study, we evaluated GMD using high-resolution T1-weighted MRI  
116 scans across three visits over 4 months in both the mild CLBP cohort and HC. The  
117 primary aim of this study was to identify regions where GMD might differ between  
118 individuals with CLBP who had not used opioids, anticonvulsants, or  
119 antidepressants, substances known to influence grey matter structure.

120

121

## 122 **2. Methods**

### 123 **2.1 Participants**

124 All participants provided written informed consent for their participation into the  
125 study. Ethics approval was granted from the institutional review board of the Centre

126 intégré universitaire de santé et de services sociaux de l'Estrie - Centre hospitalier  
127 universitaire de Sherbrooke (CIUSSS de l'Estrie-CHUS) (Sherbrooke, Quebec,  
128 Canada; approval #2021-3861). The study has been registered on Open Science  
129 Framework (OSF), under the name "Pilot project on brain and lower back imaging  
130 of chronic pain" (<https://osf.io/p2z6y>) and was conducted in accordance with the  
131 declaration of Helsinki.

132

133 Participants were recruited using posters at the CIUSSS de l'Estrie-CHUS, local  
134 physiotherapy clinics, Facebook ads, and by word of mouth. Twenty-seven CLBP  
135 patients and 25 HC aged 18 to 75 years old took part in this study. HC were  
136 matched with CLBP patients for sex and age. Detailed inclusion/exclusion criteria  
137 are discussed elsewhere (<https://osf.io/p2z6y>) (Sean et al., 2024), but briefly,  
138 inclusion criteria for the CLBP were: 1) low back pain ( $\geq 4$  months) with or without  
139 pain radiating to the legs or radiating to the neck; 2) average pain intensity of  $\geq$   
140 3/10 in the 24-hour period before the initial visit; 3) pain primarily localized in the  
141 lower back; 4) no history/no use of opioids, anticonvulsants or antidepressants.  
142 Exclusion criteria for HC were: 1) history of chronic pain; 2) pain at the time of  
143 testing; 3) an outstanding painful episode within 3 months of enrollment in the  
144 study. Exclusion criteria for the two populations included: 1) neurological,  
145 cardiovascular, or pulmonary disorders; 2) comorbid pain syndrome (i.e.,  
146 fibromyalgia, osteoarthritis, irritable bowel syndrome, migraine etc.); 3) history of  
147 surgical intervention in the back; 4) a corticosteroid infiltration within the past year;  
148 6) pregnancy (current or planned during the course of the study); 7) inability to read  
149 or understand French; 8) contra-indication to MRI.

150

## 151 2.2 Study design

152 The study had an observational longitudinal design. All participants attended three  
153 sessions at the Centre de recherche du CHUS: baseline (BL), 2-months (2M) and  
154 4-months (4M) after BL. During each visit, participants completed an array of pain

155 questionnaires and underwent brain MRI. Participants were scanned three times  
156 over a four-month period without any treatment or intervention.

157

### 158 2.3 MRI acquisition

159 MRI data was collected on a 3 Tesla (3T) Ingenia scanner equipped with a 32-  
160 channel head-coil (Philips Healthcare, Best, Netherlands). A high-resolution 3D  
161 gradient-echo T1 weighted image was first acquired (flip angle of 8°, TR/TE of  
162 7.9/3.5 ms, 1 mm isotropic voxels with a field of view (FOV) of  
163 224 × 224 × 160 mm). The total scan time was 4 minutes.

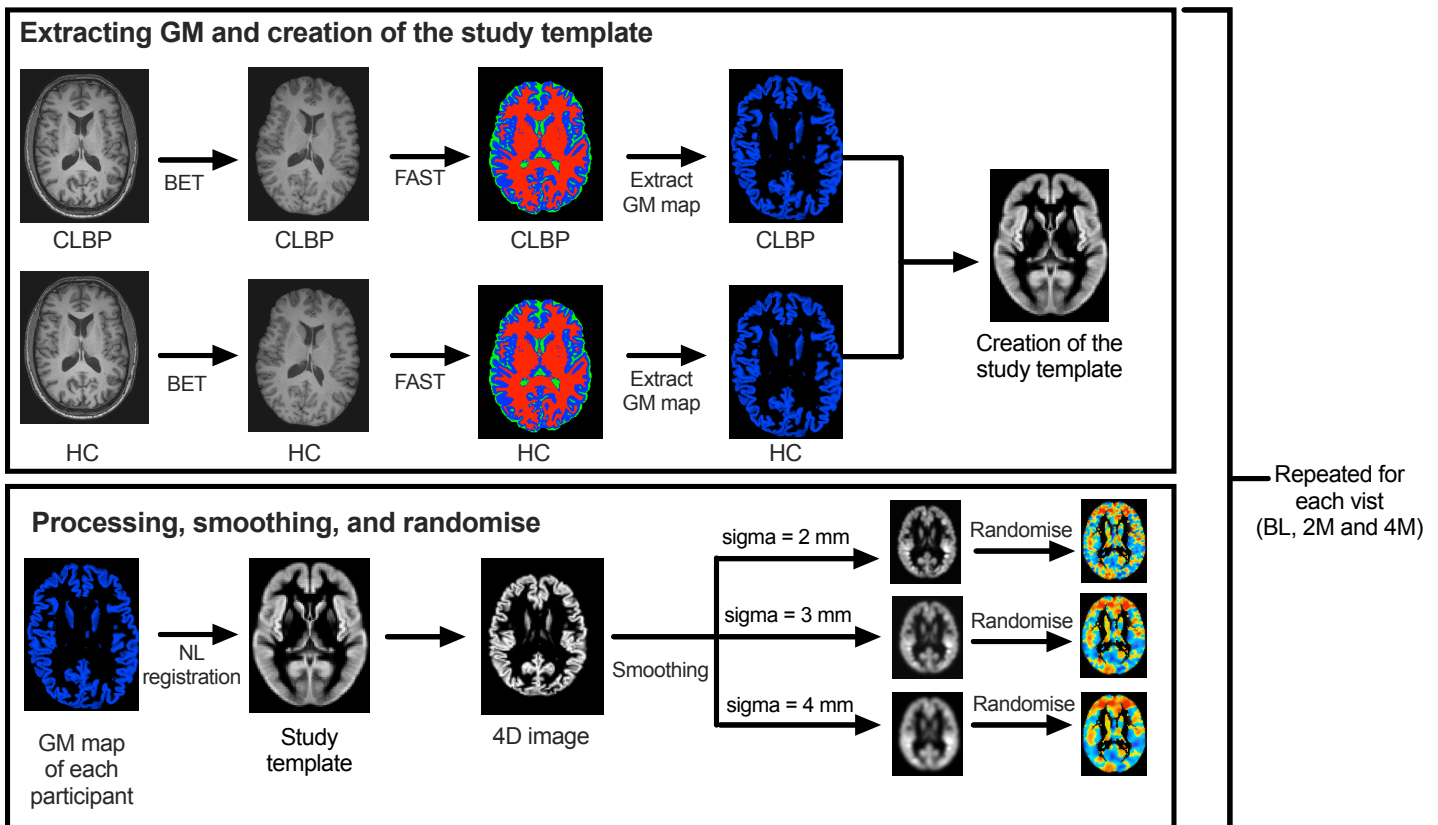
### 164 2.4 Preprocessing of T1 weighted images

165 T1-weighted images were converted from DICOM to NIFTI using the dcm2nii tool  
166 embedded into MRICroGL software (<https://www.nitrc.org/projects/mricrogl/>).  
167 Voxel Based Morphometry (VBM) analysis was carried out using the default  
168 parameters within the FMRIB Software Library (FSL-VBM) pipeline (Douaud et al.,  
169 2007). A detailed description is presented in **Figure 1**. Briefly, the preprocessing  
170 steps involved skull stripping and segmentation of the grey matter (GM), white  
171 matter (WM) and cerebrospinal fluid (CSF). Next, a study-specific GM template  
172 was created by combining HC and CLPB participants. First, GM images were  
173 aligned using an affine registration to the standard GM template based on the  
174 ICBM-152 stereotaxic atlas (FSL version 6.0.6.1 (Andersson et al., 2007)), creating  
175 a GM template. Second, GM images are registered to the GM template using non-  
176 linear registration, creating another template. Third, both templates are averaged  
177 to create a final study-specific template. After, all GM maps of our participants are  
178 non-linearly registered to this final study-specific template. Each voxel of each  
179 registered GM image is multiplied by the Jacobian of the warp field and then  
180 smoothed by an isotropic Gaussian kernel with a sigma value of 2 mm (S2).  
181 Because smoothing can influence statistical results from VBM approaches, we  
182 compared results at an isotropic Gaussian kernel with a sigma value of 3 mm (S3)  
183 and 4 mm (S4) (Coalson et al., 2018).

184

185

186



187

188 **Figure 1: Overview of the FSL-VBM pipeline**

189 CLBP = chronic low back pain, HC = healthy controls, BL= baseline, 2M = 2-  
190 months after baseline, 4M = 4 months after baseline, GM = grey matter, BET =  
191 Brain Extraction Tool, FAST = FMRIB's Automated Segmentation Tool, NL = Non-  
192 Linear registration

193

194

195 **2.5 VBM and statistical analysis**

196 FSL *Randomize* (Winkler et al., 2014) was used to conduct a voxel-wise general  
197 linear model (GLM) to examine the differences between groups. Non-parametric  
198 testing with 5000 random permutations were performed on the whole-brain GM  
199 maps to create t-test maps between HC and CLBP.

200 To isolate brain regions with significant differences between HC and CLBP  
201 patients, four different thresholds were applied using AFNI (Cox, 1996) (**Figure 2**).

202 First, in each visit (BL, 2M and 4M), only voxels with independent t-test score  
203 higher or greater than 2.3 were kept from the randomized t-test maps. Second,  
204 across these remaining voxels, we created an intersection map of only voxels  
205 present at each of the three visits (BL, 2M and 4M) with independent t-test score  
206 higher or greater than 2.3 greater were retained. Third, this intersection map was  
207 subject to 3 different cluster sizes: 15 voxels, 30 voxels and 45 voxels, wherein  
208 voxels face must touch (first-nearest neighbor clustering), meaning that clusters  
209 present at 45 voxels were retained. Finally, clusters present at each smoothing  
210 ( $\sigma=2$ ,  $\sigma=3$ , and  $\sigma=4$ ) were retained based on the approximate  
211 localization (x, y, and z MNI coordinates) of the cluster using Brainnetome Atlas  
212 (<https://atlas.brainnetome.org/bnatlas.html>). Clusters passing the four different  
213 thresholding were considered as the most significant clusters. Average GMD  
214 values of most significant clusters were extracted at each visit (probability values  
215 ranging from 0 to 1, wherein 0 = no GM is present and 1 = filled with GM).

216 Intracranial volume (ICV) was obtained using FreeSurfer (version 7.2  
217 (<http://surfer.nmr.mgh.harvard.edu/>)). ICV was compared between both groups  
218 using a Student's t-test (unpaired).

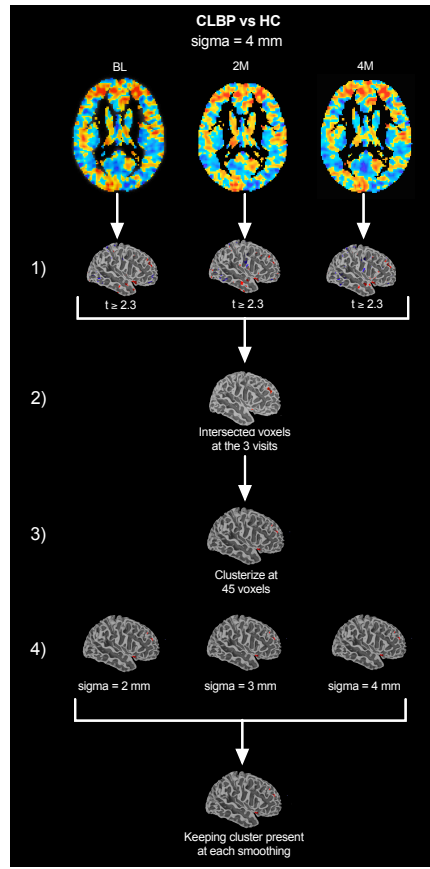
219 Sociodemographic data were also compared using a Student's t-test (unpaired) or  
220 Chi-square test with SPSS (version 28).

## 221 2.6 Pain questionnaires

222 As mentioned before, pain and other behavioral questionnaires have been  
223 analyzed and discussed in a previous article (Sean et al., 2024). Briefly, CLBP  
224 patients completed eight pain and behavioral questionnaires online using the  
225 platform "Research Electronic Data Capture" (REDCap). Data from the Brief Pain  
226 Inventory (BPI) short form subscales (BPI severity and BPI interference) are  
227 presented in **Table 1**. The measure "average intensity of pain in the last 24 hours"  
228 used here was also computed from the BPI severity score.

229





230

231 **Figure 2: Overview of the four different thresholding analyses**  
 232 Thresholding's are based on 1) t-stats maps obtained from randomize; 2)  
 233 significant and overlapping voxels present at each visit; 3) clusters of at least 45  
 234 voxels and 4) clusters that were present in each smoothing kernels. BL= baseline,  
 235 2M = 2-months after baseline, 4M = 4 months after baseline.  
 236

### 237 3. Results

#### 238 3.1 Participants

239 Fifty-two participants (25 HC and 27 CLBP) were recruited in the study. Three  
 240 CLBP participants dropped out after the first visit (unexpected pregnancy [n=1],  
 241 discomfort during MRI [n=1], scheduling conflicts [n=1]), and one dropped out after  
 242 the second visit (move to a different city [n=1]). All HC completed the three  
 243 experimental visits. The 25 HC (15 women, 10 men) were aged  $42 \pm 14$  years old,  
 244 and the 27 CLBP participants (13 women, 14 men) were aged  $43 \pm 16$  years old.  
 245 All variables showed no significant difference between both groups.

246

247 Results from the pain questionnaires, for example from the last pain intensity in  
 248 the last 24 hours, BPIs and BPIi, showed that our sample consisted of patients  
 249 with mild to moderate pain symptoms (Cleeland & Ryan, 1994; Dworkin et al.,  
 250 2012; Poquet & Lin, 2016). Questionnaire scores and characteristics of the sample  
 251 are presented in **Table 1**.

252

253 **Table 1: Characteristics of the sample.**

	<b>CLBP</b>	<b>HC</b>	<b>p-value</b>
<b>BL</b>	27	25	-
<b>2M</b>	24	25	-
<b>4M</b>	23	25	-
<b>Intracranial volume (ICV) (cm<sup>3</sup>)</b>			
<b>BL</b>	1530.31 ± 155.30	1532.76 ± 154.37	p=0.955
<b>2M</b>	1537.03 ± 163.59	1530.78 ± 152.40	p=0.890
<b>4M</b>	1541.83 ± 153.97	1535.64 ± 153.77	p=0.890
Women	13	15	p=0.419
Men	14	10	
<b>Age (average ± std)</b>	43 ± 16	42 ± 14	p=0.700
<b>Ethnicity</b>			
Caucasian	20	24	p=0.178
Asian	1	1	
Hispanic	4	-	
African	1	-	
Arabic	1	-	
<b>Education level</b>			
Primary school	-	-	p=0.318
High school	-	-	
Apprenticeship	5	2	
College	8	6	
University	14	17	
<b>Annual income</b>			
less than 20K	3	5	
20K - 35K	6	2	

35K - 50K	7	1	p=0.186
50K - 65K	5	6	
65K - 80K	2	5	
80K - 100K	3	4	
100K and more	1	2	
<b>Average intensity of pain in the last 24 hours (0 – 10)</b>			NA
<b>BL</b>	4 ± 1	NA	
<b>2M</b>	4 ± 1	NA	
<b>4M</b>	4 ± 4	NA	
<b>Brief Pain Inventory - severity (0 – 40)</b>			NA
<b>BL</b>	17 ± 4	NA	
<b>2M</b>	18 ± 6	NA	
<b>4M</b>	15 ± 7	NA	
<b>Brief Pain Inventory - interference (0 – 70)</b>			NA
<b>BL</b>	17 ± 10	NA	
<b>2M</b>	15 ± 11	NA	
<b>4M</b>	9 ± 7	NA	
<b>Pain duration</b>			NA
4 month - 5 months	0	NA	
6 months - 12 month	5	NA	
1 - 4 years	8	NA	
5 years and more	14	NA	

254

255

256

257

258 3.2 CLBP patients show higher GMD

259

260 Initial VBM results showed differences in GMD between groups at each visit (BL,

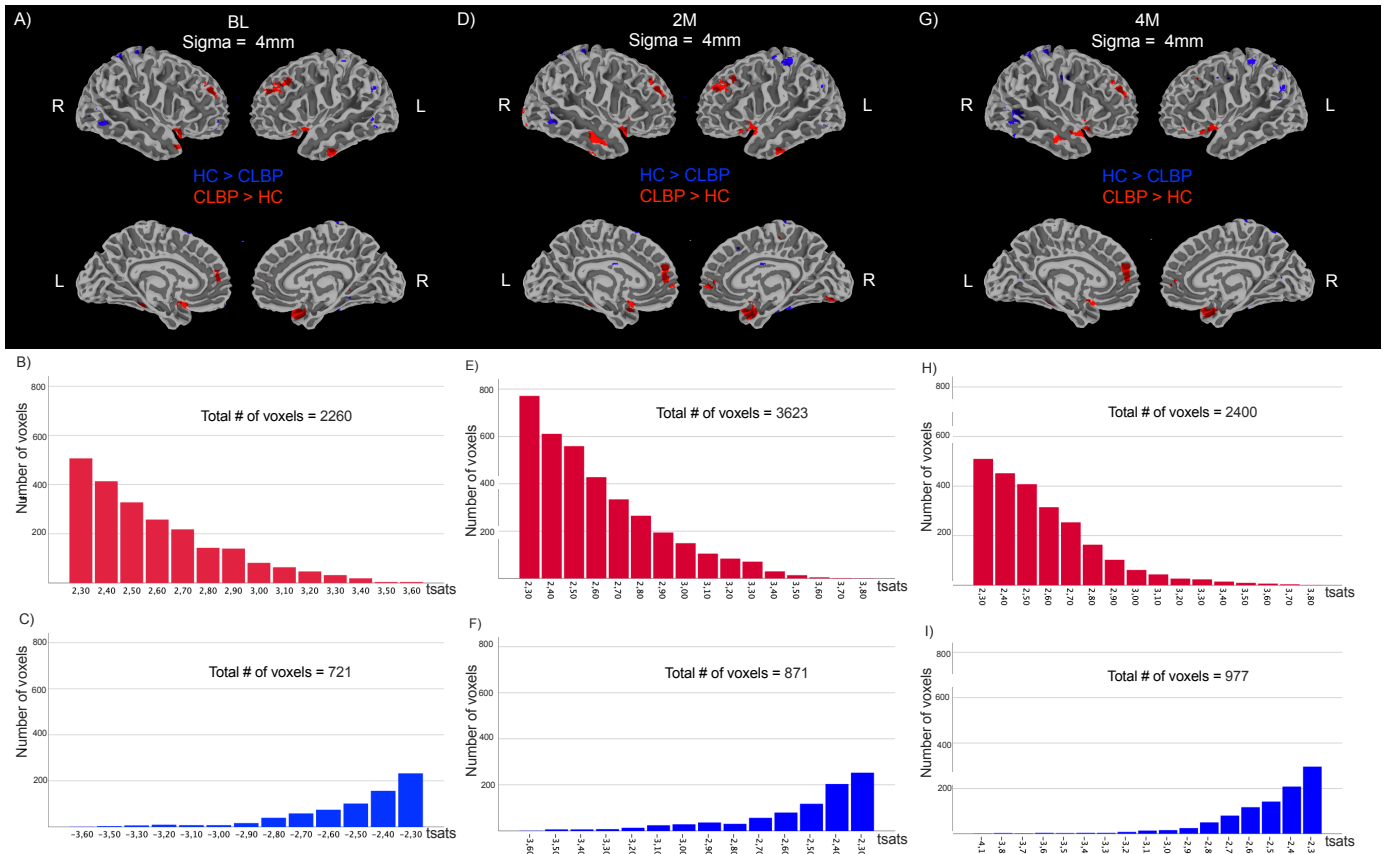
261 2M and 4M). Across all the statistically significant voxels, 76%, 81% and 71% of

262 the voxels showed higher GMD in CLBP compared to HC, respectively at BL, 2M

263 and 4M when using a smoothing kernel of 4 mm as shown in **Figure 3**. Similar

264 results were obtained when using different smoothing kernels (sigma = 2 mm and

265 sigma = 3 mm; see **Supplementary 1 and Supplementary 2**).



267

268

### 269 **Figure 3: CLBP patients show higher GMD**

270 GMD differences (sigma = 4mm) between groups are shown at A) BL, B) 2M and  
 271 C) 4M. Voxels where GMD is lower in the CLBP group compared to HC are shown  
 272 in blue. Voxels where GMD is higher in the CLBP group compared to HC are  
 273 shown in red. For each map, two bar charts are presented to show the number of  
 274 significant voxels for each t-statistics. The red bar chart (B, E, and H) indicates  
 275 the number of voxels where GMD is higher in the CLBP group compared to HC ( $t$   
 276  $\geq 2.3$ ) at BL, 2M, and 4 M respectively. The blue chart (C, F, and I) indicated  
 277 the number of voxels where GMD is lower in the CLBP group compared to HC ( $t \geq -$   
 278  $2.3$ ) at BL, 2M, and 4 M respectively.

279

### 280 3.3 Higher GMD was specifically observed in the frontal and medial temporal 281 lobe

282

283 After keeping only voxels that intersected at all three visits (BL, 2M, and 4M), the  
 284 analysis identified 16 clusters where GMD was higher in the CLBP group  
 285 compared to HC (**Figure 4**). Similar results were obtained when using different

286 smoothing kernels (sigma = 2 mm and sigma = 3 mm; see **Supplementary 3 and**  
 287 **Supplementary 4**).

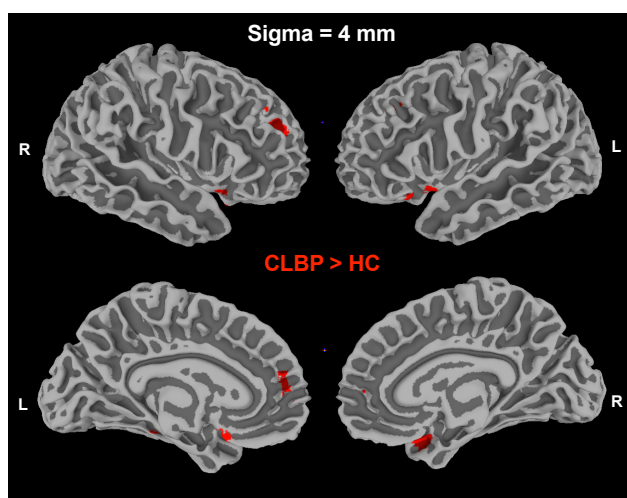
288

289

290

291 **A)**

**B)**



Cluster	#voxels	MNI coordinates (x, y, z)	Cluster size (mm <sup>3</sup> )	Approximate location based on Brainnetome Atlas
Cluster #1	309	(36, 10, -38)	2472	Right middle temporal gyrus
Cluster #2	229	(-4, 18, -30)	1832	Left orbital frontal gyrus
Cluster #3	212	(30, 46, 22)	1696	Right middle frontal gyrus
Cluster #4	83	(-10, 53, 12)	664	Left superior frontal gyrus
Cluster #5	71	(-26, -38, -24)	568	Left fusiform gyrus
Cluster #6	49	(-40, 26, -22)	392	Left orbital gyrus
Cluster #7	47	(-2, 58, 5)	376	Left superior frontal gyrus
Cluster #8	25	(6, -45, -48)	200	Right cerebellum
Cluster #9	14	(-26, 41, 41)	112	Left middle frontal gyrus
Cluster #10	7	(-36, 31, 43)	56	Left middle frontal gyrus
Cluster #11	6	(65, 1, -19)	48	Right middle temporal gyrus
Cluster #12	5	(67, -13, -32)	40	Right inferior temporal gyrus
Cluster #13	2	(24, 3, -26)	16	Right amygdala
Cluster #14	1	(59, 12, -30)	8	Right middle temporal gyrus
Cluster #15	1	(-24, 48, 26)	8	Left middle frontal gyrus
Cluster #16	1	(10, -28, 59)	8	Right paracentral lobule

292

293

294 **Figure 4: CLBP patients exhibit higher GMD in 16 clusters when intersecting**  
 295 **voxels present across all three visits.** Visual representation of the clusters that  
 296 intersected across visits (**A**). A detailed description of the 16 clusters coordinates,  
 297 size and label based on the Brainnetome Atlas (**B**).

298

299

300 Subsequently, after testing three different clustering (15, 30, and 45 voxels), the  
 301 total number of clusters decreased by 50% (16 to 8), 56% (16 to 7), and 56 % (16  
 302 to 7), respectively. Cluster made of at least 45 voxels were retained. Similar results  
 303 were obtained when using different smoothing kernels (sigma = 2 mm and sigma  
 304 = 3 mm; see **Supplementary 3 and Supplementary 4**).

305

306 Finally, after keeping only clusters present for each smoothing, three clusters were  
 307 still present (**Figure 5**). Two clusters were in the frontal lobe (right middle frontal  
 308 gyrus (r-MFG) and left orbital frontal gyrus (l-OFG)) and one in the medial temporal  
 309 lobe (right middle temporal gyrus (r-MTG)). A detailed description of these three  
 310 clusters is provided in **Table 2, Supplementary 5, and Supplementary 6**. These

311 findings demonstrate that after applying a stringent approach, GMD is higher in  
312 CLBP compared to HC.

313

314

315

316

317

318

319

320

321

322

323

324

325

326

327

328

329

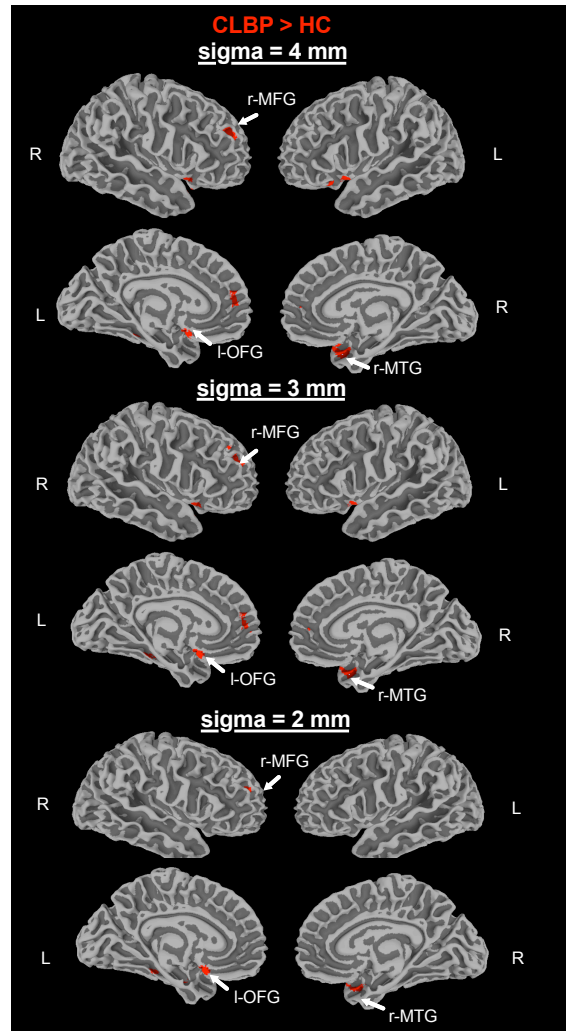
330

331

332

333

334



335 **Figure 5: CLBP patients exhibit higher GMD in 3 clusters when keeping only**  
336 **clusters present at each smoothing.** White arrows identified cluster present for  
337 each smoothing, which are found in the right middle temporal gyrus (r-MTG), left  
338 orbital frontal gyrus (l-OFG) and right middle frontal gyrus (r-MFG).

339

340

341

342

343

344

345 **Table 2: A detailed description of the four remaining clusters (sigma = 4 mm)**

346

Cluster	# voxels	MNI coordinates (x, y, z)	Cluster size (mm <sup>3</sup> )	GMD (0-1)					
				BL		2M		4M	
				CLBP	HC	CLBP	HC	CLBP	HC
Cluster r-MTG	309	(36, 10, -38)	2472	0.51±0.06	0.46±0.06	0.51±0.07	0.45±0.06	0.51±0.07	0.45±0.06
Cluster l-OFG	229	(-4, 18, -30)	1832	0.59±0.05	0.53±0.06	0.59±0.06	0.53±0.05	0.59±0.06	0.54±0.05
Cluster r-MFG	212	(30, 46, 22)	1696	0.50±0.06	0.45±0.06	0.51±0.05	0.45±0.06	0.52±0.06	0.45±0.06

347 r-MTG: right middle temporal gyrus

348 l-OFG: left orbital frontal gyrus

349 r-MFG: right middle frontal gyrus

350

351 3.4 CLBP patients do not show stable and reproducible regions with lower GMD

352

353 After applying the same methodological approach to evaluate the presence of  
 354 significant regions with lower GMD in CLBP compared to HC, no voxels survived  
 355 the full methodology (see **Supplementary 7, Supplementary 8, and**  
 356 **Supplementary 9** for individual smoothing maps and cluster tables).

357

358

359 **4. Discussion**

360 In this study, we evaluated whether individuals with mild to moderate CLBP, who  
 361 were not receiving prescribed pharmacological treatment, exhibit differences in  
 362 their GMD compared to HC. We observed that individuals with CLBP had higher  
 363 GMD than HC, particularly in the frontal and medial temporal lobes. Taken  
 364 together, these results suggest that the observed GMD alterations may be related  
 365 to the CLBP condition itself, and can be detected even in individuals with milder  
 366 symptoms and higher physical function, without the confounding effects of opioids,  
 367 anticonvulsants, or antidepressants.

368

369 This contrasts with the majority of previous studies, which have reported lower  
 370 GMD in CLBP patients (Apkarian et al., 2004; Baliki et al., 2011; Ivo et al., 2013;

371 Ung et al., 2014; Yu et al., 2021) – often interpreted as cortical atrophy (Apkarian  
372 et al., 2004; Marcori & Okazaki, 2019; Wang et al., 2017). However, it is important  
373 to reiterate that our sample differed from the literature in two ways: 1) participants  
374 had mild to moderate symptom severity (average pain intensity of 4/10, low pain  
375 disability based on similar questionnaire), compared to literature which is based  
376 on patients with moderate to high symptom severity (average pain intensity of 7/10  
377 and moderate pain disability based on a pain disability questionnaire); and 2)  
378 participant had at no point taken pain medication such as opioids, anticonvulsants  
379 or antidepressants which are known to influence GM (Sean et al., 2024).  
380 Medications can affect cerebral gray matter volume as showed in Younger et al.  
381 (2012), wherein long-lasting reduced grey matter volume was observed in several  
382 brain regions following only one month of morphine treatment (Younger et al.,  
383 2011).

384

385 Together, this suggest that our results could be different from the literature  
386 because our CLBP patients likely present a different clinical profile (mild to  
387 moderate symptoms), and could be in a distinct brain state. While it is difficult to  
388 determine to what extent the difference in result is attributable to the difference in  
389 medication vs. the difference in symptom severity. For example, Maleki et al.  
390 (2013) showing that an increase hippocampus GMV in people with a low frequency  
391 of migraine attacks (i.e., a less severe form of the condition) compared to people  
392 with a high frequency of migraine attacks (32). These observations support the  
393 idea that the higher GMD we observed could be attributable – at least partly – to  
394 the lower symptom severity of our sample.

395

396 In terms of regional specificity, our most significant clusters of increased GMD  
397 were localized to the frontal lobe and in the medial temporal lobe. Other studies  
398 have reported abnormalities in regions similar to those observed in our CLBP  
399 patients, such as the frontal and medial temporal lobes (Apkarian et al., 2004;  
400 Baliki et al., 2011; Ivo et al., 2013). These regions appear to be crucial in the  
401 dynamic progression from the acute phase to the chronic phase, as well as in its



402 maintenance (Ayoub et al., 2019; Baliki & Apkarian, 2015; McCarberg & Peppin,  
403 2019; Ong et al., 2019; Stegemann et al., 2023; Thompson & Neugebauer, 2019;  
404 Waisman & Katz, 2024). The frontal lobe and medial temporal lobe play an  
405 important role in learning and memory (Jeneson & Squire, 2012; McDonald et al.,  
406 2001). Several studies suggest that CP could be a persistence of the memory of  
407 pain and/or the inability to extinguish the memory of pain evoked by an initial  
408 inciting injury (Apkarian, 2008; Apkarian et al., 2009; Biggs et al., 2022; Mansour  
409 et al., 2014; Phelps et al., 2021; Simons et al., 2014; Vachon-Preseu, 2018; Yi  
410 & Zhang, 2011). Stegemann et al. (2023) has highlighted the importance of frontal  
411 lobe in CP, by showing that a network of prefrontal cells encoding fear memories  
412 are involved in the development and maintenance of chronic pain states  
413 (Stegemann et al., 2023). Furthermore, other studies have shown that people who  
414 develop exaggerated memories of their past pain will tend to develop a memory  
415 bias towards their future pain and are more likely to develop CP (Baliki & Apkarian,  
416 2015; Berger et al., 2018; Houde et al., 2020; Jeneson & Squire, 2012; McDonald  
417 et al., 2001; Salovey et al., 1993; Waisman et al., 2022; Waisman & Katz, 2024;  
418 Williams et al., 2022). Another study from Gui et al. (2016) has showed an  
419 increased expression of interleukin-1beta (IL-1 $\beta$ ), an inflammatory marker, in  
420 several regions associated with pain, memory, and emotion, like the prefrontal  
421 cortex and medial temporal lobe (Gui et al., 2016).

422

423 It is important to mention that the biological interpretation of “GMD” remains  
424 uncertain in the literature. Eriksson et al. (2012) found no correlation between  
425 quantitative grey matter histological measures (i.e., neuronal density and glial  
426 fibrillary acidic protein) and grey matter probability maps (i.e., GMV/GMD). In  
427 contrast, Keifer et al. (2016) identified a correlation between dendritic spine density  
428 (which could reflect synapses) and grey matter probability maps. Another possible  
429 interpretation could involve neuroinflammation (Ransohoff, 2016), a phenomenon  
430 shown in some CLBP studies using Positron Emission Tomography (PET) imaging  
431 (Alshelh et al., 2022; Loggia, 2024; Loggia et al., 2015; Nutma et al., 2023). For  
432 instance, Loggia et al. (2015) and Torrado-Carvajal et al. (2021) have showed

433 elevated brain levels of translocator protein (TSPO) in people with CLBP  
434 compared to HC, which is considered a marker of glial activation or density of  
435 inflammatory cells (Loggia, 2024; Nutma et al., 2023). Interestingly, patients in the  
436 studies by Loggia et al. (2015) and Torrado-Carvajal et al. (2021) had an average  
437 pain intensity level of 3/10, which is considered mild pain and similar to our patients  
438 (Schwerin & Mohny, 2024). Alternately, the increase in GMD could also reflect  
439 gliosis, a nonspecific reactive change in glial cells in response to damage to the  
440 central nervous system (CNS) (Burda & Sofroniew, 2014). In most cases, gliosis  
441 involves the proliferation or hypertrophy of several different types of glial cells,  
442 including astrocytes, microglia, and oligodendrocytes (Ko, 2020). Interestingly, a  
443 recent review from Emvalomenos et al. (2024) has mentioned that gliosis could be  
444 a promising avenue to study in the transition from acute to chronic pain  
445 (Emvalomenos et al., 2024). However, it is important to mention that on a T1-  
446 weighted image, it is difficult to conclude on a potential mechanism (see limitation).  
447 Additionally, there is a lack of post-mortem or histology studies on CP patients'  
448 brains, which could have helped us clarify the underlying mechanism related to the  
449 observed difference in GMD.

450

#### 451 4.1 Strengths and limitations

452 One of the strengths of our study is that we were able to examine GMD in CLBP  
453 patients with low to mild symptom severity, without the confounding influence of  
454 opioids, anticonvulsants or antidepressants. Another strength of our dataset lies in  
455 the longitudinal aspect, where each participant was imaged three times over a four-  
456 month period. We further took advantage of this repeated measure to develop a  
457 rigorous method to minimize false positive findings.

458

459 One of the limitations of our study is that we rely on T1-weighted images, which  
460 makes it difficult to interpret our results with certainty, specifically because the  
461 intensity in a T1-weighted image is not quantitative. Having other sequences such  
462 as a Fluid-Attenuated Inversion Recovery (FLAIR) or free-water derived from

463 diffusion MRI, could have helped us to evaluate whether neuroinflammation was  
464 present or not in our CLBP patients.

465

466 Another limitation is the small sample size, which affects the statistical power and  
467 accordingly increases the likelihood of both of Type I and Type II errors. However,  
468 having three assessment time point allowed us to create a stringent  
469 methodological approach rarely seen in the MRI literature that was aimed at  
470 reducing both of Type I and Type II errors. Also, we only analyzed our results using  
471 one pipeline (FSL-VBM), but the software options allowing the construction of a  
472 template based on the anatomy of our participants are limited and Eggert et al.  
473 2012 have shown that FSL achieved the highest accuracy compared to other  
474 software (Eggert et al., 2012). Another study from Johnson et al. 2017 have  
475 compared seven segmentation tools in HC and Huntington's disease and shown  
476 that all methods showed high reliability (Johnson et al., 2017).

477

478 Finally, pain duration was not systematically collected for every patient (as a large  
479 portion of them were unable to give a specific answer), such that we were unable  
480 to properly account for pain duration in statistical analyses.

481

## 482 **5. Conclusion**

483 Our results suggest that individuals with CLBP, experiencing mild to moderate pain  
484 symptoms and not using centrally acting medications, exhibit increased GMD  
485 compared to HC, as assessed using a robust repeated measures approach. The  
486 most significant clusters were observed in the frontal lobe (two clusters) and the  
487 medial temporal lobe. However, since only T1-weighted images were acquired, the  
488 biological interpretation of these findings remains uncertain. Future studies should  
489 measure pain duration and ideally include patients with low, moderate, and high  
490 symptom severity, both with and without centrally acting medications, to better  
491 understand the contribution of each of these variables. Additionally, using other  
492 imaging modalities will help clarify the underlying mechanisms responsible for the  
493 observed differences in GMD.

494

495 **Data availability**

496

497 Our data are available from the corresponding author upon request.

498

499 **Author Contributions**

500 MS and PT conceived the study. MS, SC, KW and PT analyzed the results. MS,

501 SC, ACL, JH, MM, GL, KW, PT contributed to writing the manuscript. MS, GL, KW,

502 and PT helped with data analysis and interpretation. MS, MM and PT collected

503 data.

504

505 **Declaration of Competing Interests**

506 All authors declare that they have no conflicts of interest to declare.

507

508

- 510 Alshelh, Z., Brusaferrri, L., Saha, A., Morrissey, E., Knight, P., Kim, M., Zhang,  
511 Y., Hooker, J. M., Albrecht, D., Torrado-Carvajal, A., Placzek, M. S., Akeju, O.,  
512 Price, J., Edwards, R. R., Lee, J., Sclocco, R., Catana, C., Napadow, V., &  
513 Loggia, M. L. (2022). Neuroimmune signatures in chronic low back pain  
514 subtypes. *Brain*, *145*(3), 1098–1110. <https://doi.org/10.1093/brain/awab336>
- 515 Apkarian, A. V. (2008). Pain perception in relation to emotional learning. *Current*  
516 *Opinion in Neurobiology*, *18*(4), 464–468.  
517 <https://doi.org/10.1016/j.conb.2008.09.012>
- 518 Apkarian, A. V., Baliki, M. N., & Geha, P. Y. (2009). Towards a theory of chronic  
519 pain. *Progress in Neurobiology*, *87*(2), 81–97.  
520 <https://doi.org/10.1016/j.pneurobio.2008.09.018>
- 521 Apkarian, A. V., Sosa, Y., Sonty, S., Levy, R. M., Harden, R. N., Parrish, T. B., &  
522 Gitelman, D. R. (2004). Chronic back pain is associated with decreased  
523 prefrontal and thalamic gray matter density. *The Journal of Neuroscience: The*  
524 *Official Journal of the Society for Neuroscience*, *24*(46), 10410–10415.  
525 <https://doi.org/10.1523/jneurosci.2541-04.2004>
- 526 Ayoub, L. J., Barnett, A., Leboucher, A., Golosky, M., McAndrews, M. P.,  
527 Seminowicz, D. A., & Moayedi, M. (2019). The medial temporal lobe in  
528 nociception: A meta-analytic and functional connectivity study. *Pain*, *160*(6),  
529 1245. <https://doi.org/10.1097/j.pain.0000000000001519>
- 530 Baliki, M. N., & Apkarian, A. V. (2015). Nociception, Pain, Negative Moods, and  
531 Behavior Selection. *Neuron*, *87*(3), 474–491.  
532 <https://doi.org/10.1016/j.neuron.2015.06.005>
- 533 Baliki, M. N., Schnitzer, T. J., Bauer, W. R., & Apkarian, A. V. (2011). Brain  
534 morphological signatures for chronic pain. *PloS One*, *6*(10), e26010.  
535 <https://doi.org/10.1371/journal.pone.0026010>
- 536 Benoist, M. (2003). Natural history of the aging spine. *European Spine Journal*,  
537 *12*(Suppl 2), S86. <https://doi.org/10.1007/s00586-003-0593-0>
- 538 Berger, S. E., Vachon-Presseau, É., Abdullah, T. B., Baria, A. T., Schnitzer, T. J.,  
539 & Apkarian, A. V. (2018). Hippocampal morphology mediates biased memories  
540 of chronic pain. *NeuroImage*, *166*, 86–98.  
541 <https://doi.org/10.1016/j.neuroimage.2017.10.030>
- 542 Biggs, E. E., Timmers, I., Heathcote, L. C., Tremblay-McGaw, A. G., Noel, M.,  
543 Borsook, D., & Simons, L. E. (2022). Emotional memory bias in adolescents with  
544 chronic pain: Examining the relationship with neural, stress, and psychological  
545 factors. *PAIN*, *10.1097/j.pain.0000000000003382*.  
546 <https://doi.org/10.1097/j.pain.0000000000003382>
- 547 Brinjikji, W., Diehn, F. E., Jarvik, J. G., Carr, C. M., Kallmes, D. F., Murad, M. H.,  
548 & Luetmer, P. H. (2015). MRI Findings of Disc Degeneration are More Prevalent  
549 in Adults with Low Back Pain than in Asymptomatic Controls: A Systematic  
550 Review and Meta-Analysis. *AJNR: American Journal of Neuroradiology*, *36*(12),  
551 2394–2399. <https://doi.org/10.3174/ajnr.A4498>
- 552 Brinjikji, W., Luetmer, P. H., Comstock, B., Bresnahan, B. W., Chen, L. E., Deyo,  
553 R. A., Halabi, S., Turner, J. A., Avins, A. L., James, K., Wald, J. T., Kallmes, D.  
554 F., & Jarvik, J. G. (2015). Systematic Literature Review of Imaging Features of

555 Spinal Degeneration in Asymptomatic Populations. *American Journal of*  
556 *Neuroradiology*, 36(4), 811–816. <https://doi.org/10.3174/ajnr.A4173>  
557 Burda, J. E., & Sofroniew, M. V. (2014). Reactive gliosis and the multicellular  
558 response to CNS damage and disease. *Neuron*, 81(2), 229–248.  
559 <https://doi.org/10.1016/j.neuron.2013.12.034>  
560 Burgstaller, J. M., Schöffler, P. J., Buhmann, J. M., Andreisek, G., Winklhofer, S.,  
561 Del Grande, F., Mattle, M., Brunner, F., Karakoumis, G., Steurer, J., Held, U., &  
562 LSOS Study Group. (2016). Is There an Association Between Pain and Magnetic  
563 Resonance Imaging Parameters in Patients With Lumbar Spinal Stenosis?  
564 *Spine*, 41(17), E1053–E1062. <https://doi.org/10.1097/BRS.0000000000001544>  
565 Bushnell, M. C., Ceko, M., & Low, L. A. (2013). Cognitive and emotional control  
566 of pain and its disruption in chronic pain. *Nature Reviews Neuroscience*, 14(7),  
567 502–511. <https://doi.org/10.1038/nrn3516>  
568 Canadian Pain Task Force. (2019). *Chronic pain in Canada: Laying a foundation*  
569 *for action : a report by the Canadian Pain Task Force, June 2019*. Health Canada  
570 = Santé Canada.  
571 Cleeland, C. S., & Ryan, K. M. (1994). Pain assessment: Global use of the Brief  
572 Pain Inventory. *Annals of the Academy of Medicine, Singapore*, 23(2), 129–138.  
573 Coalson, T. S., Van Essen, D. C., & Glasser, M. F. (2018). The impact of  
574 traditional neuroimaging methods on the spatial localization of cortical areas.  
575 *Proceedings of the National Academy of Sciences*, 115(27).  
576 <https://doi.org/10.1073/pnas.1801582115>  
577 Cox, R. W. (1996). AFNI: Software for Analysis and Visualization of Functional  
578 Magnetic Resonance Neuroimages. *Computers and Biomedical Research*, 29(3),  
579 162–173. <https://doi.org/10.1006/cbmr.1996.0014>  
580 Douaud, G., Smith, S., Jenkinson, M., Behrens, T., Johansen-Berg, H., Vickers,  
581 J., James, S., Voets, N., Watkins, K., Matthews, P. M., & James, A. (2007).  
582 Anatomically related grey and white matter abnormalities in adolescent-onset  
583 schizophrenia. *Brain : A Journal of Neurology*, 130(Pt 9), 2375–2386.  
584 <https://doi.org/10.1093/brain/awm184>  
585 Dworkin, R. H., Turk, D. C., Peirce-Sandner, S., Burke, L. B., Farrar, J. T., Gilron,  
586 I., Jensen, M. P., Katz, N. P., Raja, S. N., Rappaport, B. A., Rowbotham, M. C.,  
587 Backonja, M.-M., Baron, R., Bellamy, N., Bhagwagar, Z., Costello, A., Cowan, P.,  
588 Fang, W. C., Hertz, S., ... Ziegler, D. (2012). Considerations for improving assay  
589 sensitivity in chronic pain clinical trials: IMMPACT recommendations. *Pain*,  
590 153(6), 1148–1158. <https://doi.org/10.1016/j.pain.2012.03.003>  
591 Eggert, L. D., Sommer, J., Jansen, A., Kircher, T., & Konrad, C. (2012). Accuracy  
592 and Reliability of Automated Gray Matter Segmentation Pathways on Real and  
593 Simulated Structural Magnetic Resonance Images of the Human Brain. *PLoS*  
594 *ONE*, 7(9), e45081. <https://doi.org/10.1371/journal.pone.0045081>  
595 Emvalomenos, G. M., Kang, J. W. M., Jupp, B., Mychasiuk, R., Keay, K. A., &  
596 Henderson, L. A. (2024). Recent developments and challenges in positron  
597 emission tomography imaging of gliosis in chronic neuropathic pain. *Pain*,  
598 165(10), 2184–2199. <https://doi.org/10.1097/j.pain.0000000000003247>  
599 Finucane, L. M., Downie, A., Mercer, C., Greenhalgh, S. M., Boissonault, W. G.,  
600 Pool-Goudzwaard, A. L., Beneciuk, J. M., Leech, R. L., & Selfe, J. (2020).

601 International Framework for Red Flags for Potential Serious Spinal Pathologies.  
602 *The Journal of Orthopaedic and Sports Physical Therapy*, 50(7), 350–372.  
603 <https://doi.org/10.2519/jospt.2020.9971>

604 Garland, E. L. (2012). Pain processing in the human nervous system: A selective  
605 review of nociceptive and biobehavioral pathways. *Primary Care*, 39(3), 561–571.  
606 <https://doi.org/10.1016/j.pop.2012.06.013>

607 Gui, W.-S., Wei, X., Mai, C.-L., Murugan, M., Wu, L.-J., Xin, W.-J., Zhou, L.-J., &  
608 Liu, X.-G. (2016). Interleukin-1 $\beta$  overproduction is a common cause for  
609 neuropathic pain, memory deficit, and depression following peripheral nerve  
610 injury in rodents. *Molecular Pain*, 12, 1744806916646784.  
611 <https://doi.org/10.1177/1744806916646784>

612 Hall, A. M., Aubrey-Bassler, K., Thorne, B., & Maher, C. G. (2021). Do not  
613 routinely offer imaging for uncomplicated low back pain. *BMJ*, n291.  
614 <https://doi.org/10.1136/bmj.n291>

615 Houde, F., Martel, M., Coulombe-Lévêque, A., Harvey, M.-P., Auclair, V.,  
616 Mathieu, D., Whittingstall, K., Goffaux, P., & Léonard, G. (2020). Perturbing the  
617 activity of the superior temporal gyrus during pain encoding prevents the  
618 exaggeration of pain memories: A virtual lesion study using single-pulse  
619 transcranial magnetic stimulation. *Neurobiology of Learning and Memory*, 169,  
620 107174. <https://doi.org/10.1016/j.nlm.2020.107174>

621 Ivo, R., Nicklas, A., Dargel, J., Sobottke, R., Delank, K.-S., Eysel, P., & Weber, B.  
622 (2013). Brain structural and psychometric alterations in chronic low back pain.  
623 *European Spine Journal: Official Publication of the European Spine Society, the*  
624 *European Spinal Deformity Society, and the European Section of the Cervical*  
625 *Spine Research Society*, 22(9), 1958–1964. [https://doi.org/10.1007/s00586-013-](https://doi.org/10.1007/s00586-013-2692-x)  
626 [2692-x](https://doi.org/10.1007/s00586-013-2692-x)

627 Jeneson, A., & Squire, L. R. (2012). Working memory, long-term memory, and  
628 medial temporal lobe function. *Learning & Memory*, 19(1), 15.  
629 <https://doi.org/10.1101/lm.024018.111>

630 Johnson, E. B., Gregory, S., Johnson, H. J., Durr, A., Leavitt, B. R., Roos, R. A.,  
631 Rees, G., Tabrizi, S. J., & Scahill, R. I. (2017). Recommendations for the Use of  
632 Automated Gray Matter Segmentation Tools: Evidence from Huntington's  
633 Disease. *Frontiers in Neurology*, 8, 519. <https://doi.org/10.3389/fneur.2017.00519>

634 Kahere, M., & Ginindza, T. (2020). The burden of non-specific chronic low back  
635 pain among adults in KwaZulu-Natal, South Africa: A protocol for a mixed-  
636 methods study. *BMJ Open*, 10(9), e039554. [https://doi.org/10.1136/bmjopen-](https://doi.org/10.1136/bmjopen-2020-039554)  
637 [2020-039554](https://doi.org/10.1136/bmjopen-2020-039554)

638 Kasch, R., Truthmann, J., Hancock, M. J., Maher, C. G., Otto, M., Nell, C.,  
639 Reichwein, N., Bülow, R., Chenot, J.-F., Hofer, A., Wassilew, G., & Schmidt, C.  
640 O. (2022a). Association of Lumbar MRI Findings with Current and Future Back  
641 Pain in a Population-based Cohort Study. *Spine*, 47(3), 201–211.  
642 <https://doi.org/10.1097/BRS.0000000000004198>

643 Kasch, R., Truthmann, J., Hancock, M. J., Maher, C. G., Otto, M., Nell, C.,  
644 Reichwein, N., Bülow, R., Chenot, J.-F., Hofer, A., Wassilew, G., & Schmidt, C.  
645 O. (2022b). Association of Lumbar MRI Findings with Current and Future Back  
646 Pain in a Population-based Cohort Study. *Spine*, 47(3), 201–211.

647 <https://doi.org/10.1097/BRS.0000000000004198>  
648 Ko, I.-G. (2020). Therapeutic Strategies Against Apoptosis and Gliosis.  
649 *International Neurology Journal*, 24(Suppl 2), 65–66.  
650 <https://doi.org/10.5213/inj.2020edi.006>  
651 Loggia, M. L. (2024). “Neuroinflammation”: Does it have a role in chronic pain?  
652 Evidence from human imaging. *PAIN*, 165(11S), S58.  
653 <https://doi.org/10.1097/j.pain.0000000000003342>  
654 Loggia, M. L., Berna, C., Kim, J., Cahalan, C. M., Martel, M.-O., Gollub, R. L.,  
655 Wasan, A. D., Napadow, V., & Edwards, R. R. (2015). The lateral prefrontal  
656 cortex mediates the hyperalgesic effects of negative cognitions in chronic pain  
657 patients. *The Journal of Pain : Official Journal of the American Pain Society*,  
658 16(8), 692–699. <https://doi.org/10.1016/j.jpain.2015.04.003>  
659 Maher, C., Underwood, M., & Buchbinder, R. (2017). Non-specific low back pain.  
660 *The Lancet*, 389(10070), 736–747. [https://doi.org/10.1016/S0140-](https://doi.org/10.1016/S0140-6736(16)30970-9)  
661 [6736\(16\)30970-9](https://doi.org/10.1016/S0140-6736(16)30970-9)  
662 Makary, M. M., Polosecki, P., Cecchi, G. A., DeAraujo, I. E., Barron, D. S.,  
663 Constable, T. R., Whang, P. G., Thomas, D. A., Mowafi, H., Small, D. M., &  
664 Geha, P. (2020). Loss of nucleus accumbens low-frequency fluctuations is a  
665 signature of chronic pain. *Proceedings of the National Academy of Sciences*,  
666 201918682. <https://doi.org/10.1073/pnas.1918682117>  
667 Mansour, A. R., Farmer, M. A., Baliki, M. N., & Apkarian, A. V. (2014). Chronic  
668 pain: The role of learning and brain plasticity. *Restorative Neurology and*  
669 *Neuroscience*, 32(1), 129–139. <https://doi.org/10.3233/rnn-139003>  
670 Marcori, A. J., & Okazaki, V. H. A. (2019). Motor repertoire and gray matter  
671 plasticity: Is there a link? *Medical Hypotheses*, 130, 109261.  
672 <https://doi.org/10.1016/j.mehy.2019.109261>  
673 McCarberg, B., & Peppin, J. (2019). Pain Pathways and Nervous System  
674 Plasticity: Learning and Memory in Pain. *Pain Medicine*, 20(12), 2421–2437.  
675 <https://doi.org/10.1093/pm/pnz017>  
676 McDonald, C. R., Bauer, R. M., Grande, L., Gilmore, R., & Roper, S. (2001). The  
677 role of the frontal lobes in memory: Evidence from unilateral frontal resections for  
678 relief of intractable epilepsy. *Archives of Clinical Neuropsychology*, 16(6), 571–  
679 585. [https://doi.org/10.1016/S0887-6177\(00\)00068-8](https://doi.org/10.1016/S0887-6177(00)00068-8)  
680 Nijs, J., Kosek, E., Chiarotto, A., Cook, C., Danneels, L. A., Fernández-de-las-  
681 Peñas, C., Hodges, P. W., Koes, B., Louw, A., Ostelo, R., Scholten-Peeters, G.  
682 G. M., Sterling, M., Alkassabi, O., Alsobayel, H., Beales, D., Bilika, P., Clark, J.  
683 R., De Baets, L., Demoulin, C., ... George, S. Z. (2024). Nociceptive,  
684 neuropathic, or nociplastic low back pain? The low back pain phenotyping  
685 (BACPAP) consortium’s international and multidisciplinary consensus  
686 recommendations. *The Lancet Rheumatology*, S2665991323003247.  
687 [https://doi.org/10.1016/S2665-9913\(23\)00324-7](https://doi.org/10.1016/S2665-9913(23)00324-7)  
688 Nutma, E., Fancy, N., Weinert, M., Tsartsalis, S., Marzin, M. C., Muirhead, R. C.  
689 J., Falk, I., Breur, M., de Bruin, J., Hollaus, D., Pieterman, R., Anink, J., Story, D.,  
690 Chandran, S., Tang, J., Trolese, M. C., Saito, T., Saido, T. C., Wiltshire, K. H., ...  
691 Owen, D. R. (2023). Translocator protein is a marker of activated microglia in  
692 rodent models but not human neurodegenerative diseases. *Nature*



693 *Communications*, 14(1), 5247. <https://doi.org/10.1038/s41467-023-40937-z>  
694 Ong, W.-Y., Stohler, C. S., & Herr, D. R. (2019). Role of the Prefrontal Cortex in  
695 Pain Processing. *Molecular Neurobiology*, 56(2), 1137–1166.  
696 <https://doi.org/10.1007/s12035-018-1130-9>  
697 Parenteau, C. S., Lau, E. C., Campbell, I. C., & Courtney, A. (2021). Prevalence  
698 of spine degeneration diagnosis by type, age, gender, and obesity using  
699 Medicare data. *Scientific Reports*, 11(1), 5389. [https://doi.org/10.1038/s41598-](https://doi.org/10.1038/s41598-021-84724-6)  
700 [021-84724-6](https://doi.org/10.1038/s41598-021-84724-6)  
701 Phelps, C. E., Navratilova, E., & Porreca, F. (2021). Cognition in the Chronic  
702 Pain Experience: Preclinical Insights. *Trends in Cognitive Sciences*, 25(5), 365–  
703 376. <https://doi.org/10.1016/j.tics.2021.01.001>  
704 Poquet, N., & Lin, C. (2016). The Brief Pain Inventory (BPI). *Journal of*  
705 *Physiotherapy*, 62(1), 52. <https://doi.org/10.1016/j.jphys.2015.07.001>  
706 Puiu, T., Kairys, A. E., Pauer, L., Schmidt-Wilcke, T., Ichesco, E., Hampson, J.  
707 P., Napadow, V., Clauw, D. J., & Harris, R. E. (2016). Alterations in Gray Matter  
708 Volume are Associated with Reduced Evoked-Pain Connectivity following Acute  
709 Pregabalin Administration. *Arthritis & Rheumatology (Hoboken, N.J.)*, 68(6),  
710 1511–1521. <https://doi.org/10.1002/art.39600>  
711 Ransohoff, R. M. (2016). How neuroinflammation contributes to  
712 neurodegeneration. *Science*, 353(6301), 777–783.  
713 <https://doi.org/10.1126/science.aag2590>  
714 Russell, M. D., Barrick, T. R., Howe, F. A., & Sofat, N. (2018). Reduced anterior  
715 cingulate grey matter volume in painful hand osteoarthritis. *Rheumatology*  
716 *International*, 38(8), 1429–1435. <https://doi.org/10.1007/s00296-018-4085-2>  
717 Salovey, P., Smith, A. F., Turk, D. C., Jobe, J. B., & Willis, G. B. (1993). The  
718 accuracy of memory for pain. *APS Journal*, 2(3), 184–191.  
719 [https://doi.org/10.1016/S1058-9139\(05\)80087-7](https://doi.org/10.1016/S1058-9139(05)80087-7)  
720 Schmidt-Wilcke, T., Leinisch, E., Gänbauer, S., Draganski, B., Bogdahn, U.,  
721 Altmeyen, J., & May, A. (2006). Affective components and intensity of pain  
722 correlate with structural differences in gray matter in chronic back pain patients.  
723 *Pain*, 125(1), 89–97. <https://doi.org/10.1016/j.pain.2006.05.004>  
724 Schwerin, D. L., & Mohny, S. (2024). EMS Pain Assessment And Management.  
725 In *StatPearls*. StatPearls Publishing.  
726 <http://www.ncbi.nlm.nih.gov/books/NBK554543/>  
727 Sean, M., Coulombe-Lévêque, A., Nadeau, W., Charest, A.-C., Martel, M.,  
728 Léonard, G., & Tétreault, P. (2024). Counting your chickens before they hatch:  
729 Improvements in an untreated chronic pain population, beyond regression to the  
730 mean and the placebo effect. *PAIN Reports*, 9(3), e1157.  
731 <https://doi.org/10.1097/PR9.0000000000001157>  
732 Simons, L. E., Elman, I., & Borsook, D. (2014). Psychological processing in  
733 chronic pain: A neural systems approach. *Neuroscience and Biobehavioral*  
734 *Reviews*, 39, 61–78. <https://doi.org/10.1016/j.neubiorev.2013.12.006>  
735 Stegemann, A., Liu, S., Retana Romero, O. A., Oswald, M. J., Han, Y., Beretta,  
736 C. A., Gan, Z., Tan, L. L., Wisden, W., Gräff, J., & Kuner, R. (2023). Prefrontal  
737 engrams of long-term fear memory perpetuate pain perception. *Nature*  
738 *Neuroscience*, 26(5), 820–829. <https://doi.org/10.1038/s41593-023-01291-x>

739 Thompson, J. M., & Neugebauer, V. (2019). Cortico-limbic pain mechanisms.  
740 *Neuroscience Letters*, 702, 15–23. <https://doi.org/10.1016/j.neulet.2018.11.037>  
741 Ung, H., Brown, J. E., Johnson, K. A., Younger, J., Hush, J., & Mackey, S.  
742 (2014). Multivariate classification of structural MRI data detects chronic low back  
743 pain. *Cerebral Cortex*, 24(4), 1037–1044. <https://doi.org/10.1093/cercor/bhs378>  
744 Vachon-Preseu, E. (2018). Effects of stress on the corticolimbic system:  
745 Implications for chronic pain. *Progress in Neuro-Psychopharmacology &*  
746 *Biological Psychiatry*, 87(Pt B), 216–223.  
747 <https://doi.org/10.1016/j.pnpbp.2017.10.014>  
748 Vos, T., Abajobir, A. A., Abate, K. H., Abbafati, C., Abbas, K. M., Abd-Allah, F.,  
749 Abdulkader, R. S., Abdulle, A. M., Abebo, T. A., Abera, S. F., Aboyans, V., Abu-  
750 Raddad, L. J., Ackerman, I. N., Adamu, A. A., Adetokunboh, O., Afarideh, M.,  
751 Afshin, A., Agarwal, S. K., Aggarwal, R., ... Murray, C. J. L. (2017). Global,  
752 regional, and national incidence, prevalence, and years lived with disability for  
753 328 diseases and injuries for 195 countries, 1990–2016: A systematic analysis  
754 for the Global Burden of Disease Study 2016. *The Lancet*, 390(10100), 1211–  
755 1259. [https://doi.org/10.1016/S0140-6736\(17\)32154-2](https://doi.org/10.1016/S0140-6736(17)32154-2)  
756 Waisman, A., & Katz, J. (2024). The autobiographical memory system and  
757 chronic pain: A neurocognitive framework for the initiation and maintenance of  
758 chronic pain. *Neuroscience & Biobehavioral Reviews*, 162, 105736.  
759 <https://doi.org/10.1016/j.neubiorev.2024.105736>  
760 Waisman, A., Pavlova, M., Noel, M., & Katz, J. (2022). Painful reminders:  
761 Involvement of the autobiographical memory system in pediatric postsurgical  
762 pain and the transition to chronicity. *Canadian Journal of Pain*, 6(2), 121.  
763 <https://doi.org/10.1080/24740527.2022.2058474>  
764 Wang, J., Zhou, L., Cui, C., Liu, Z., & Lu, J. (2017). Gray matter morphological  
765 anomalies in the cerebellar vermis in first-episode schizophrenia patients with  
766 cognitive deficits. *BMC Psychiatry*, 17(1), 374. [https://doi.org/10.1186/s12888-](https://doi.org/10.1186/s12888-017-1543-4)  
767 [017-1543-4](https://doi.org/10.1186/s12888-017-1543-4)  
768 Williams, S. E., Ford, J. H., & Kensinger, E. A. (2022). The power of negative and  
769 positive episodic memories. *Cognitive, Affective, & Behavioral Neuroscience*,  
770 22(5), 869–903. <https://doi.org/10.3758/s13415-022-01013-z>  
771 Winkler, A. M., Ridgway, G. R., Webster, M. A., Smith, S. M., & Nichols, T. E.  
772 (2014). Permutation inference for the general linear model. *NeuroImage*, 92, 381  
773 397. <https://doi.org/10.1016/j.neuroimage.2014.01.060>  
774 Wocial, K., Feldman, B. A., Mruk, B., Sklinda, K., Walecki, J., & Waśko, M.  
775 (2021). Imaging features of the aging spine. *Polish Journal of Radiology*, 86,  
776 e380. <https://doi.org/10.5114/pjr.2021.107728>  
777 Yi, M., & Zhang, H. (2011). Nociceptive memory in the brain: Cortical  
778 mechanisms of chronic pain. *The Journal of Neuroscience : The Official Journal*  
779 *of the Society for Neuroscience*, 31(38), 13343–13345.  
780 <https://doi.org/10.1523/jneurosci.3279-11.2011>  
781 Younger, J. W., Chu, L. F., D'Arcy, N. T., Trott, K. E., Jastrzab, L. E., & Mackey,  
782 S. C. (2011). Prescription opioid analgesics rapidly change the human brain.  
783 *Pain*, 152(8), 1803–1810. <https://doi.org/10.1016/j.pain.2011.03.028>  
784 Yu, G. Z., Ly, M., Karim, H. T., Muppidi, N., Aizenstein, H. J., & Ibinson, J. W.

785 (2021). Accelerated brain aging in chronic low back pain. *Brain Research*, 1755,  
786 147263. <https://doi.org/10.1016/j.brainres.2020.147263>  
787