

# AI Perspectives on the Present and Future of Antidepressant Pharmaceutical Treatment Based on Anti-inflammatory Strategies: A Scoping Review of Randomised Controlled Clinical Trials

Yan Bo<sup>1\*†</sup>, Yifei Chen<sup>2†</sup>, Hsu Yi Liang<sup>3</sup>, Haoran Dai<sup>4</sup>, Fengjiao Zhao<sup>5</sup>, Ming Wu<sup>6</sup>, Youwei Wang<sup>7</sup>, Ren Sha<sup>8</sup>

<sup>1</sup> Yan Bo, Department of Medicine, Northwest Minzu University, Lanzhou City 73000, Gansu Province, China

<sup>2</sup> Yifei Chen, Department of Emergency Medicine, The Affiliated Hospital of Yangzhou University, Yangzhou 225012, Jiangsu Province, China

<sup>3</sup> Hsu Yi Liang, School of Electrical Engineering, Monash University, Melbourne City 3800, Victoria State, Australia

<sup>4</sup> Haoran Dai, Nanjing Medical University, Nanjing 211166, Jiangsu Province, China

<sup>5</sup> Fengjiao Zhao, Shantou University Medical College, Shantou City 515041, Guangdong Province, China

<sup>6</sup> Ming Wu, Gongli Hospital affiliated to Second Military Medical University, Shanghai 200000, China

<sup>7</sup> Youwei Wang, School of Medicine, Beihua University, Jilin City 132013, Jilin Province, China

<sup>8</sup> Ren Sha, Inner Mongolia Chaopai New Materials Co., Ltd., Hohhot City 010000, Inner Mongolia Autonomous Region, China

**\* Correspondence:**

Yan Bo  
thoseformylovedpeople@outlook.com

†These authors contributed equally to this work and share first authorship

## **Abstract**

### **Background**

Depression remains an unresolved issue on a global scale. Recently, a novel concept of 'anti-inflammatory-based pharmacotherapy' has been developed. Despite the role of inflammation in depression having been discussed in many reviews at various levels, the prevalence of this new concept in randomised controlled clinical studies and its implications remain elusive. The aim of this scoping review was precisely to explore in depth the current status of inflammation in randomised controlled clinical trial studies of depression.

### **Methods**

PubMed was systematically searched from inception to December 11 2024. Studies that researched on the treatment of depression based on anti-inflammatory strategies were included. Study characteristics and outcomes were extracted and organized thematically.

### **Findings**

11 reports of randomised controlled clinical trials were included, which accumulated 119 depressed patients. All studies found that there is a connection between the effects of anti-inflammatory drugs in treating depression and a large decrease in the levels of inflammatory markers in the blood of depressed patients compared to before treatment. Three inflammatory markers, CRP, IL-6 and TNF-alpha, were the most frequently mentioned. The current strategy of anti-inflammatory drug administration did not differ fundamentally from the previous strategy of traditional antidepressant drugs combined with psychotherapy.

### **Interpretation**

At present, the use of anti-inflammatory strategies for the pharmacological treatment of depression has limited research value and poor feasibility. The future direction of the new concept of anti-inflammatory strategies for the treatment of depression, proposed in the context of the association between inflammation and depression, is that psychiatrists, researchers, and psychotherapists should shift their future focus from pharmacological treatments based on anti-inflammatory strategies to non-pharmacological treatments of anti-inflammatory strategies, such as positive thinking, exercise, and so on. The popularity of purely clinical randomised controlled studies in the depression population is extremely low when considering the financial investment in research and the benefits of translating the results. In the future, public interest studies, low research costs, and research protocols with mass generalisability will be more likely to stimulate the depression community's interest in participating in research. The potential value and feasibility of future research lies in the application of an integrated AI platform to assist pharmacological treatment of depression based on anti-inflammatory strategies.

Registration DOI: <https://doi.org/10.17605/OSF.IO/A64GC>

**Keywords: depression, anti-inflammatory strategy, randomized controlled trials, pharmaceutical treatment, scoping review.**

## **1 Introduction**

In recent years, the role of inflammation in depression and the effects of anti-inflammatory drugs on depression have emerged as significant areas of mental health research. A growing body of evidence strongly indicates that inflammatory processes are closely associated to the pathogenesis of depression (1). Inflammation is the body's natural response to injury or infection, often involving activation of the immune system (2). Numerous research findings have shown that patients with depression have significantly elevated levels of inflammatory markers, such as cytokines and chemokines (3,4). These markers not only reflect the inflammatory state of the body but may also have a direct impact on brain function and mood. Inflammation may act on the brain through a variety of mechanisms, including affecting neurotransmitter metabolism, altering neuroplasticity, and interfering with signalling between neurons(5). Of particular note, inflammation has been found to inhibit the production of dopamine, which is strongly associated with feelings of well-being and pleasure (6).

Currently, the anti-inflammatory drugs commonly used to treat depression in the clinic are non-steroidal anti-inflammatory drugs (NSAIDs) and Omega-3 fatty acids. NSAIDs, such as aspirin and ibuprofen, are considered to have an antidepressant effect because they can lower inflammation in the body and thus improve depressive symptoms (7). A substantial body of clinical research has demonstrated significant improvements in mood and overall mental health in depressed patients treated with NSAIDs. Omega-3 fatty acids, believed to possess anti-inflammatory properties, have also exhibited favourable outcomes in the management of depression. Studies have indicated that a diet abundant in Omega-3s is associated with a reduced risk of depression. These fatty acids may modulate inflammatory responses and neurotransmitter levels, thereby contributing to their antidepressant effect (8). In addition to the two aforementioned classes of drugs, other substances with anti-inflammatory bioactive effects, such as steroids, have demonstrated antidepressant effects by suppressing the inflammatory response, thereby potentially alleviating depressive symptoms. Patients who have used steroids for a prolonged period have exhibited a substantial reduction in depressive symptoms (9).

Nevertheless, the question of whether these findings can modify the prevailing status quo for depressed patients, who require either long-term or short-term cognitive therapy, remains unresolved (10). This shift in the management of depression emphasises the transition of long-term fixed cognitive therapy into a therapeutic process involving the regular administration of medication. This transformation in the treatment process is undoubtedly more appealing to patient groups requiring short, rapid, and convenient treatments for depression, such as working adults and school students.

Despite the nascent state of research assessing the role of inflammation in depression, there are several potential benefits. These include improved clinical study designs (e.g., study outcomes, experimental materials) and the relevance of study results. While some progress has been made in depression research in recent years, much of the research continues to centre on clinical symptoms and treatment, with relatively little attention paid to the role of inflammation in this context. Early basic research is critical to a deeper understanding of depression. The present moment is characterised by a crisis in the translation of research findings into clinical practice in the field of depression. This crisis results in the failure to fully implement significant discoveries concerning the underlying mechanisms of depression in clinical treatment. The reasons for this phenomenon are not clear-cut, and there is a pressing need for novel approaches to enhance the return on investment in depression research.

As the majority of drugs with psychoactive pharmacological effects also tend to possess anti-inflammatory properties (11), it is imperative to delineate the manner in which a clinical study is

investigating the efficacy of anti-inflammatory drugs in the treatment of groups exhibiting inflammatory manifestations in depression. Existing knowledge evidence suggests that depression manifests inflammation by upregulating the expression of inflammatory substances in vivo in a non-infectious state (1), and that high serum levels of inflammatory concentrations can be observed by testing for the corresponding inflammatory substances, such as interleukins. The establishment of a correlation between serum levels of inflammatory substances such as interleukins and the state of depression represents a novel area of research on inflammation and depression. The potential for the use of anti-inflammatory drugs to reduce inflammation in the body, with the aim of achieving recovery from depression, is an area that requires further investigation.

Our study proposes that reducing inflammation in the body should be a goal in treating depression. This idea is backed by the new area of research on developing anti-inflammatory drug treatments for depression. Concurrently, the field of artificial intelligence is experiencing rapid growth and gradual infiltration into all aspects of self-health assessment and teletherapy (12,13). In this context, the question arises as to how artificial intelligence can be utilised to assist in the pharmacological treatment of depression under effective human management.

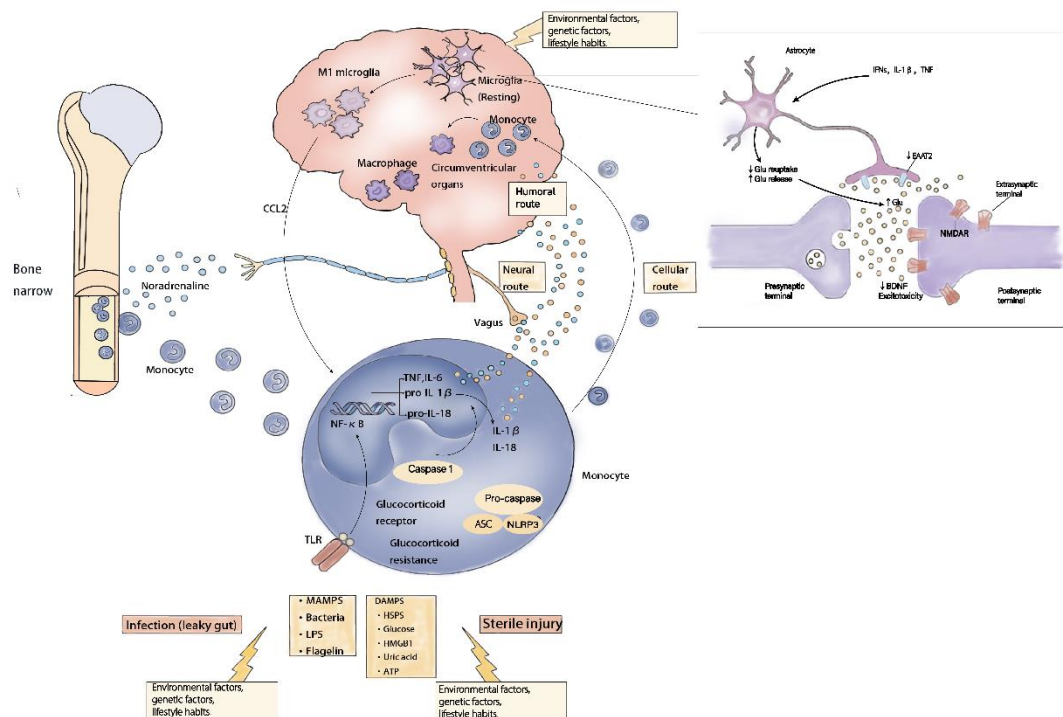
The objective of this scoping review is to examine the current state of inflammation in randomised controlled clinical trial studies of depression. The identification of current trends in this area and the collation of existing frameworks that may be used to guide future research is also intended, with a view to providing new ideas and approaches to the treatment of depression.

## **2 Literature review**

### **2.1 Overview**

Neuroinflammation, defined as an immune response within the central nervous system, involves a series of processes including the activation of glial cells and the release of cytokines and chemokines. In the development of depression, abnormal neuroinflammation interferes with neurotransmitter metabolism, affects neuroplasticity, and in turn triggers depressive symptoms (14–16). Conversely, signalling pathways represent a series of intracellular molecular interactions, including the NLRP3 (17), NF- $\kappa$ B (18) and P2X7R (19), which play a pivotal role in the transmission and regulation of neuroinflammation and depression. These signalling pathways are of central interest in the study of the pathogenesis and therapeutic targets of depression. In 2017, Miller and Raison published a image entitled 'Transmitting stress-induced inflammatory signals to the brain'. This image was edited to reflect the adjustment of factors that trigger inflammation-associated depression from stress to environmental factors, heritage factors, and personal habits. This adjustment is more consistent with existing evidence describing the inflammatory pathogenesis of depression (20).

### **Figure 1. Inflammatory pathogenesis of depression.**



A systematic search of the literature was conducted in accordance with the predefined search strategy set out in the research protocol (21,22). This yielded 118 articles pertaining to animal research, with structured abstracts on neuroinflammatory target-based therapeutic strategies for depression. However, only 61 of these articles were obtained in full text, and following a thorough review of these, 21 articles were excluded on the basis of their relating to comorbidities with other diseases, and a further 9 were excluded due to their focus on mechanisms of inflammation-associated depression. The final selection comprised 31 research papers. The present review covers 31 animal studies focusing on neuroinflammatory target-based therapeutic strategies for depression, involving both pharmacological interventions (including SGLT2 inhibitors, vitamin D analogues, natural extracts and other compounds) and non-pharmacological interventions (e.g. These include acupuncture, exercise, and light therapy). The present review comprehensively incorporates the results of the animal model studies, with the aim of presenting an all-rounded picture of the research in this field and to provide a comprehensive overview of the clinical translation of the scoping review. It aims to present a comprehensive picture of the research in this field and to provide an animal-level basis for a scoping review to explore clinical translation.

In the actual population of depressed patients, neuroinflammation does not exist in isolation, but rather involves the interaction of multiple systems, including the neurological, endocrine, and immune systems. The lifestyle and environmental factors of each depressed patient have been shown to indirectly affect neural circuits, thereby complicating the manifestation of neuroinflammation. It has been demonstrated that both the patient's personal factors and the complex neuroinflammation can have a significant impact on the onset, development, and treatment response of depression. The present study has identified a variety of novel anti-inflammatory drugs and non-pharmacological treatments in animal experiments that modulate the three main signalling pathways of neuroinflammation, namely NLRP3 (17), NF- $\kappa$ B (18) and P2X7R (19). This modulation has been shown to result in an improvement of depressive symptoms and neuroinflammation. In terms of pharmacological interventions, Empagliflozin has been shown to regulate autophagy or inflammation

and neurogenesis in the hippocampus through activation of AMPK (23). Calcitriol has been demonstrated to inhibit the P2X7R/NLRP3/caspase-1 signalling pathway, thereby reducing neuroinflammation (24). Among non-pharmacological interventions, acupuncture (19) and exercise (25) have been shown to modulate relevant inflammatory and apoptotic pathways, improve neuroplasticity and reduce neuroinflammation, respectively. The primary debate has focused on single-target versus multi-target modulation strategies and pharmacological versus non-pharmacological intervention modalities. Single-target modulation emphasises precise inhibition of specific key signalling pathways, whereas multi-target modulation argues for integrated modulation of multiple associated signalling pathways to cope with disease complexity. The majority of extant studies are in the short-term observation and small-scale research stage. At this stage, animal studies have not yet been able to clearly explain how these drugs act on specific neuroinflammatory targets according to the dynamic changes in animals, and effectively regulate the functional activities of neural circuits in the hippocampus, prefrontal cortex, and other brain regions that are closely related to depression, so as to achieve a stable and long-lasting antidepressant effect.

Although the main focus has centred around therapeutic strategies for depression based on neuroinflammatory targets, the question of how different pharmacological and non-pharmacological treatments can precisely and dynamically modulate the interaction between neuroinflammation and depression-associated neural circuits in a complex human physiological and pathological environment has not been thoroughly investigated.

## **2.2 Development**

In the early research on depression, the focus was primarily on the traditional theory of monoamine neurotransmitter imbalance, with a relative paucity of understanding of the role of neuroinflammation in depression (26). However, as research progressed, it was found that the inflammatory response was associated with depression. Nonetheless, at this stage, research remained at the level of observational studies, with no exploration of the specific mechanisms of neuroinflammation-related signalling pathways and effective intervention strategies.

In recent years, however, there has been a shift in focus towards the exploration of the role of neuroinflammation-associated signalling pathways, such as NLRP3 (17), NF- $\kappa$ B (18) and P2X7R (19), in the development of depression. These studies have identified pharmacological and non-pharmacological intervention options with therapeutic potential to modulate these signalling pathways and thereby improve depressive symptoms. However, the majority of these studies are in the animal experimentation phase and have yet to demonstrate sufficient clinical relevance. The findings from these animal experiments are not yet representative of a comprehensive understanding and effective solution to the problem of achieving long-term stable modulation of neuroinflammation-related signalling pathways in depression and avoiding adverse effects in order to achieve a sustained antidepressant effect. This requires a significant volume of in-depth research.

## **2.3 Research status**

### **2.3.1 Pharmacological interventions**

A study by Muhammad et al, Cairo University, Egypt, demonstrated that Empagliflozin can regulate the balance of autophagy or inflammatory dynamics and PKC $\zeta$ -mediated neurogenesis in the hippocampus through activation of AMPK, inhibit the NLRP3 inflammatory vesicle pathway, and ameliorate depressive symptoms. In the reserpine-induced rat model of depression, Empagliflozin

has been shown to restore monoamines and autophagy or inflammatory balance in the hippocampus, and to promote neuroplasticity. However, no in-depth study has yet been conducted on whether its sustained effects on the signalling pathways are affected by adaptive modulation of the organism after long-term use (23).

A study by Ma et al, Chiba University Center for Forensic Mental Health, Japan, suggests that the combination of brexpiprazole and fluoxetine produces a rapid antidepressant effect in an inflammatory model of depression, possibly through stimulation of the BDNF-TrkB signalling pathway as well as modulation of dendritic spine density. Consequently, it is hypothesised that brexpiprazole-assisted SSRI treatment is expected to produce rapid antidepressant effects in patients with depression (26).

A study by Bao et al from Xiamen University, China, revealed that chronic stress activates endogenous retroviruses (ERVs) in a mouse model, prompting an immune-inflammatory response in microglia in the basolateral amygdala (BLA), which ultimately triggers negative emotional behaviours. Antiretroviral therapy, inhibition of reverse transcriptase, and knockdown of p53, a gene that regulates the transcription of ERVs, have been shown to be effective in suppressing chronic stress-induced immunoinflammatory responses in microglia and ameliorating negative emotional behaviours in mice. This remarkable effect relies on reversing microglial cell morphology and biological immune inflammation. This particular use of antipsychotics may generate new therapeutic inspiration for psychiatrists (27).

In an ex vivo experiment, Wang et al. (Jining Medical University, China) demonstrated that vitamin D analogues could attenuate neuroinflammation, alleviate LPS-induced depressive-like behaviours and cognitive deficits, and have protective effects on neurons through inhibition of the P2X7R/NLRP3/caspase-1 signalling pathway. However, the potential adverse effects of long-term use require further investigation. In particular, the indirect effects of abnormal calcium metabolism on neuroinflammation-related signalling pathways need to be further explored (24).

A study by Ben-Gurion University of the Negev, Israel, Rostevanov et al. demonstrates that leukotrienes (LTs) enhance depression-like symptoms in mice, exhibiting a non-sex-selective effect. However, this study also reveals that sex selectivity is present in inflammatory homeostasis, as evidenced by the increased levels of IL-6 and TNF-alpha in brain regions in males and decreased levels in females. The clinical and translational implications of this sex-selective correlation in inflammatory homeostasis remain to be elucidated (28).

A study by Li et al. from Beijing University of Chinese Medicine, China, examined the effects of liver-sparing granules (SGKL) on the gut, brain, and behaviour of chronic restraint stress (CRS) rats, and found that SGKL could improve depression. The study also found that SGKL could improve depression-like behaviour by altering the intestinal microbiota and metabolites targeting the PI3K/Akt/mTOR pathway (29).

In a mother-mouse isolated stress mouse model, Nouri et al. from Shahrekord University of Medical Sciences, Shahrekord, Iran, showed that progesterone alleviated depressive-like behavior in mice. It did so by reducing neuroinflammatory responses and oxidative stress(30).

A study by Universidade Federal de Pelotas, Brazil, Casaril et al. demonstrated that the selenium-containing compound 3-((4-chlorophenyl)selenyl)-1-methyl-1H-indole (CMI) was able to reverse acute restraint stress-induced depressive-like behaviour in mice by regulating oxidative stress and

neuroinflammation, and by restoring corticosterone levels and related gene expression. This selenium-enriched compound, endowed with oxidative and anti-inflammatory bioactivities, may represent a promising candidate for future dietary interventions in the prevention of depression (31).

A total of three studies on nutritional supplements have reported that propolis, n-3 polyunsaturated fatty acids (PUFAs) and skeletal muscle glycine all improve depression-like behaviour. This mechanism is associated with anti-inflammatory and antioxidant properties (32–34).

A total of fourteen studies on natural extracts, including Fustin, Berberine, and Cinnamic Acid, were identified as modulating oxidative stress, neuroinflammatory markers, and associated signalling pathways in animal models to enhance depression- and anxiety-like behaviours. However, the majority of these studies were of a short-term nature, and there was an absence of longitudinal research on the stability of the signalling pathways and the potential challenges associated with tolerance during extended use. Furthermore, there is a paucity of long-term follow-up studies (17,18,35–46). The differences between these studies are summarised in **Table 1**.

**Table 1. Comparison of 14 research reports on natural extracts**

Plant extract	Pathway or mechanism	Effect
Loganin in Corni Fructus(37)	BDNF-TrkB; PI3K/Akt	Improve depression-like behavior, promote hippocampal neuroplasticity, and inhibit neuroinflammation
Berberine(17)	NLRP3/caspase-1/ASC/IL-1 $\beta$	Improves depression-like behavior and reverses neuroplasticity damage
Aerva javanica(35)	Regulates neuroinflammation, oxidative stress and monoaminergic pathways	Improve depression-like behavior
Nootkatone(45)	NF- $\kappa$ B/NLRP3 inflammasome pathway	Improve depression-like behavior, inhibit proinflammatory cytokine expression, and inhibit neuroinflammation
Cinnamic acid(46)	Regulates inflammation and oxidative stress	Improve depression-like behavior, improve inflammatory cytokines and oxidative stress parameters, and regulate BDNF levels
Thymoquinone(43)	Regulates inflammatory, cytokines and BDNF	Improve depression-like behavior, reduce inflammatory cytokine mRNA expression in hippocampus and amygdala, and regulate BDNF and NeuN mRNA levels
Baicalein(47)	BDNF, TrkB, CREB	Improve depression-like behavior
Baicalin(38)	PI3K/AKT/FoxO1/TLR4	Improve depression-like behavior



Sinomenine(42)	Regulates neuroinflammation and neuroplasticity	Improve depression-like behavior
Zanthoxylum alatum(36)	Regulates hippocampal neuroinflammation and monoamine neurotransmitters	Improve depression-like behavior
Salvianolic acid B(40)	Regulates autophagy and NLRP3 inflammasome	Improve behavioral deficits and neuroinflammatory responses
Vitex megapota mica(39)	NR	Improved depression-like behavior, analgesic effect
Clove essential oil(44)	Anti-inflammatory and antioxidant	Improves depression-like behavior and cognitive memory deficits
Fustin(18)	Regulates oxidative stress, neuroinflammatory markers, NF- $\kappa$ B, caspase-3, BDNF	Improve depression-like behavior

---

The abbreviations in the table are explained below.

BDNF: brain-derived neurotrophic factor; TrkB: tropomyosin receptor kinase B; PI3K: phosphatidylinositol 3-kinase; Akt: Protein kinase B; NLRP3: NLR family pyrin domain containing 3; caspase-1: Cysteiny l aspartate specific proteinase-1; ASC: apoptosis-associated speck-like protein containing a CARD; IL-1 $\beta$ : interleukin-1 $\beta$ ; NF- $\kappa$ B: nuclear factor kappa-B; TLR4: toll-like receptor 4; FoxO1: forkhead box O1; CREB: cyclic AMP response element-binding protein; NR: not report.

### 2.3.2 Non-pharmacological interventions

Four studies of acupuncture have indicated that acupuncture modulates oxidative stress, neuroinflammation, and apoptosis-related pathways and attenuates chronic stress-induced depressive-like behaviours and cognitive deficits, but the mechanism of maintenance of the long-term effects of acupuncture stimulation and how individual differences in sensitivity to acupuncture affect the modulation of neuroinflammation-related signalling pathways have not yet been conclusively demonstrated (19,48–50).

A study by Xie et al. from Renmin Hospital of Wuhan University, China, demonstrated that swimming exercise increases the expression of proteins related to neuroplasticity in the hippocampus, reduces neuroinflammation, and improves depressive behaviours. However, further systematic studies are required to investigate the long-term regulation of neuroinflammatory signalling pathways by different exercise intensities, frequencies, and durations, and the differential effects of exercise among individuals of different ages, genders, and health conditions. Further systematic studies are needed to investigate the differential effects of exercise in individuals of different age groups, genders and health conditions (25).

A study by Universitat de Barcelona, Spain, examined the effects of brain-gut photobiomodulation (PBM) on mice with chronic stress. Chronic stress is an important risk factor for depression and is

associated with gut microbiota dysbiosis. Existing treatments for depression are deficient, and PBM has potential as a non-invasive therapy. Utilising an experimental model, the study ascertained that chronic stress instigates alterations in behaviour and hippocampal protein expression in mice. Moreover, the study determined that PBM modulates the gut microbiota, restores hippocampal Sirt1 levels, improves cognition and reduces neuroinflammation. This novel physical light therapy approach to treat stress-related depression provides a novel direction for further research (51).

## 2.4 Perspective

The choice of single target versus multi-target regulation is a major point of debate in the field. Some studies have argued in favour of the search for efficient inhibitors targeting specific key signalling pathways. These studies suggest that precise blockade of the pathway can effectively control neuroinflammation and thus improve depressive symptoms. For example, certain natural compounds have been studied with a focus on their inhibitory effects on NLRP3 inflammatory vesicle activation and have achieved some antidepressant effects (17,40,45). Conversely, it has been proposed that depression is a multifactorial and intricate condition, and that single-target modulation may not be sufficiently comprehensive in addressing the multifaceted nature of the disease and the heterogeneity of individual patients. The argument is made that a more effective approach would be the comprehensive modulation of multiple interconnected signalling pathways, such as the concurrent modulation of autophagy, inflammation, and oxidative stress-related pathways, to achieve a more enduring antidepressant effect. Empagliflozin's ability to simultaneously regulate multiple signalling pathways is considered to be a significant mechanism contributing to its antidepressant effects (23).

A further point of contention for achieving clinical translational value is the comparison of the advantages of pharmacological versus non-pharmacological interventions. Pharmacological interventionists emphasise the precision and actionability of drugs in modulating neuroinflammatory signalling pathways, which can act directly on the target through specific molecular mechanisms and are easy to standardise. Non-pharmacological interventionists counter by highlighting the advantages of natural, holistic regulation and reduced adverse effects that non-pharmacological methods, such as acupuncture and exercise, offer. These methods can indirectly regulate neuroinflammation by improving the physiological and psychological state of the body. From a holistic standpoint, these approaches may be more suited to long-term maintenance therapy. However, the mechanisms underlying non-pharmacological interventions are intricate and challenging to delineate with precision, and the intricacies of their regulation of neuroinflammation-related signalling pathways are yet to be thoroughly investigated.

The present study offers a plethora of novel concepts and methodologies for the management of depression. Nevertheless, considerable progress is yet to be made before the comprehensive resolution of the long-term stable regulation of neuroinflammation-related signalling pathways and the circumvention of adverse effects can be achieved. Future research should focus on the following fuzzy general directions: first, to carry out long-term follow-up studies to observe the long-term effects and potential adverse effects of different interventions in animal models, and to analyse in depth the dynamic changes of the signalling pathways; second, to strengthen the research on individual difference factors (e.g., gene polymorphisms, lifestyle, intestinal flora, etc.) and to explore the personalised treatment options; thirdly, to further explore the different interventions between the Thirdly, to further explore the joint application mode and synergistic mechanism between different interventions, to give full play to the advantages of pharmacological and non-pharmacological interventions, and to improve the effect and stability of depression treatment.

It is the contention of this team that the progress made thus far in animal studies is not transferable to a clinical context. With regard to research methodology, there is a necessity for animal models to be further optimised in order to more accurately replicate the pathophysiological processes of human depression. While the development of new animal models for inducing depression is a more arduous task, the enhancement of the design and implementation of clinical studies is a more attainable goal, thereby improving the extrapolation and utility of findings. While acknowledging the value of animal studies in identifying interventions that promote or inhibit key factors, it is crucial to recognise the limitations in assessing the extent to which these interventions occur in actual organisms. It is highly probable that moderation conclusions are minor or insignificant in real-world settings. To enhance the credibility of the research, the authors' team should consider publishing the specific numbers in addition to the published data and images, rather than relying solely on the P-value significance. The bias caused by the credibility of the interpretation of results by the mere independent presence of P values has been previously reported (52). In addition to the continued exploration of new drug targets and compounds, attention must be paid to the safety and tolerability of drugs, especially with regard to potential risks during long-term use. It is evident that discovering a promising new drug is a very difficult process.

In the context of non-pharmacological interventions, a comprehensive analysis of the mechanisms underlying acupuncture, exercise and other therapeutic modalities is imperative. This analysis should encompass the specific sites and modalities of their regulation of neuroinflammation-related signalling pathways. The objective is to formulate a more scientific and standardised intervention protocol. However, it should be noted that acupuncture is a technique that falls under the umbrella of traditional Chinese medicine (TCM). TCM is an empirical medicine, and the deliberate administration of acupuncture using scientific protocols may potentially diminish the original therapeutic effect. Interdisciplinary cooperation is crucial for comprehensive analysis of the pathogenesis and therapeutic principles of depression, integrating multidisciplinary knowledge such as neuroscience, immunology, psychology, genetics, etc. Unfortunately, in-depth studies from these perspectives can erode research teams' confidence. The current ability and methods to study from the subcellular organelle level are limited, and compared to the cost of research, cognitive therapy and exhortation to daily exercise may be the most effective option at this time.

## **2.5 Brief summary**

Significant progress has been made in the field of research, with the use of animal models and cellular experiments leading to the identification of several key pathways closely related to neuroinflammation in depression. These pathways, including NLRP3 inflammatory vesicles, NF- $\kappa$ B, and P2X7R, have been successfully targeted by pharmacological and non-pharmacological interventions, suggesting potential for their modulation. Empagliflozin and calcitriol have been identified as promising pharmacological and non-pharmacological interventions, respectively, with the potential to modulate key pathways such as the AMPK-mediated autophagy/inflammation pathway and the P2X7R/NLRP3/caspase-1 pathway. These studies exemplify the depth and professionalism of the research, paving the way for future studies in this field.

Nevertheless, there are still many problems that need to be solved. In terms of long-term stability, the majority of studies focus on short-term evaluation of intervention effects, and there is a paucity of systematic and long-term tracking studies on the dynamic evolution of the signalling pathway, the possible adaptive changes in the body, and their subsequent effects on the therapeutic effects of drugs or therapies over the long term. Natural extracts such as Fustin have demonstrated short-term alleviation of depressive symptoms; however, the long-term implications of their use remain

uncertain, including potential feedback regulation of the signalling pathway or the emergence of tolerance issues. In addressing individual differences, research has inadequately explored the influence of genetic polymorphisms, lifestyle, gut flora and other factors in regulating neuroinflammatory signalling pathways and therapeutic responses, impeding the development of personalised and precise treatment plans. For instance, although exercise therapy is generally effective, there are differences in exercise capacity, compliance and physiological basis among individuals, and the extent to which these differences affect the regulation of neuroinflammatory signalling pathways remains to be elucidated.

### **3 Methods**

We followed a standard scoping review framework, first defined by Arksey and O'Malley (53), then later expanded by Levac *et al.* (54), and the Joanna Briggs Institute (55). This review is reported in accordance with the PRISMA extension for scoping reviews (a completed checklist can be found in Appendix 1) (56). The protocol and updates for this review can be found in Open Science Framework ([osf.io/qpmw4](https://osf.io/qpmw4)) (21,22).

#### **3.1 Information sources and literature search**

A qualified information specialist systematically searched PubMed. The study design was that of a scoping review, rather than a systematic review. Consequently, although the searches of multiple databases were broader and more comprehensive, Embase, the Cochrane Library and Web of Science were not searched, due to a focus on speed and efficiency for the scoping review. No date restrictions were applied to be as comprehensive as possible in our search. Keywords related to basic science, research, laboratory, biomedical, patient engagement, and public involvement were used. The full search strategy used can be found in Appendix A. Only randomized controlled trials were eligible. Abstracts were excluded as they lacked details required for our synthesis (e.g. detailed descriptions of patient engagement activities). Identified review articles underwent a backward citation check to identify any additional articles eligible to be included in the scoping review.

#### **3.2 Eligibility criteria and study selection**

Eligible sources described or studied patients engagement in randomized controlled trials. We defined “drugs based on anti-inflammatory strategies” as all substances that had anti-inflammatory biological activity that aims to increase understanding of a human condition (57).

Elements included the definition of inflammation, tested anti-agents, inflammatory markers, inflammation-related outcomes, duration of treatment, question refinement, defining outcomes, methods and study design, statistical analysis plan, conduct of research, interpretation of results, and dissemination and implementation of results(58).

Five members were responsible for screening and data extraction. Two independent reviewers screened articles in duplicate by titles/abstracts and then by full text. A calibration exercise was performed on the first fifty articles to refine the screening question prior to formally commencing the screening process, and to ensure reviewers understood and interpreted the eligibility criteria correctly. Discrepancies between the reviewers were resolved by discussion or by a senior team member. Reasons for exclusion were recorded at the full-text phase.

During the screening process, certain challenges were encountered. For instance, the titles and abstracts of some articles were presented in a vague manner, which made it difficult to ascertain

directly whether they met the inclusion criteria for studies related to anti-inflammatory strategies in the treatment of depression. To address these challenges, a further review of the articles' full texts was conducted, with a focus on the study objectives, methods, and results sections, to ascertain their relevance to the use of anti-inflammatory strategies in the treatment of depression. In instances where the definition and mechanism of action of novel anti-inflammatory drugs or therapies used in some studies were unclear, an in-depth understanding was obtained through a review of relevant professional literature and consultation with experts in the field, to ensure an accurate judgement of the study content.

In instances where articles employed intricate study designs encompassing numerous interventions, it proved challenging to ascertain the relevance of their primary research content to our designated topic. The decision regarding the inclusion of a study was made through meticulous analysis of the study's research framework, pivotal study variables, and outcome measures. In instances where uncertainties persisted, comprehensive deliberations among team members were initiated to comprehensively address the perspectives of all involved parties, leading to the attainment of a consensus.

### **3.3 Data extraction**

Two reviewers abstracted data from included studies independently using a standardized data extraction form. Senior team members provided oversight throughout screening and data extraction. The extraction form was developed with input from all team members and the GRIPP2 checklist (59).

### **3.4 Synthesis of results**

Our content analysis followed a 6-step approach developed by Thomas and Harden (60) and later implemented by Ryan et al. (61):

- (i) four independent reviewers extracted verbatim statements of benefits, challenges, recommendations, barriers, and enablers to patient engagement in preclinical laboratory research from each included study. Any discrepancies in extraction were resolved by reviewers with the help of a senior author if consensus could not be reached;
- (ii) statements were presented to the entire research team and analyzed within each of the 5 domains;
- (iii) two reviewers categorized statements as reoccurring themes. Reoccurring themes were grouped together, and new themes were identified as they emerged. This was achieved through an analytic framework that organized overarching themes as table columns and verbatim statements in the rows of each corresponding theme;
- (iv) categorization was reviewed by a second reviewer. The tabulated results were presented to the entire research team for review and refinement;
- (v) results were narratively synthesized by two reviewers and overarching themes were presented as tables;
- (vi) overarching themes were ordered by frequency within each patient engagement domain.

### **3.5 Ethics**

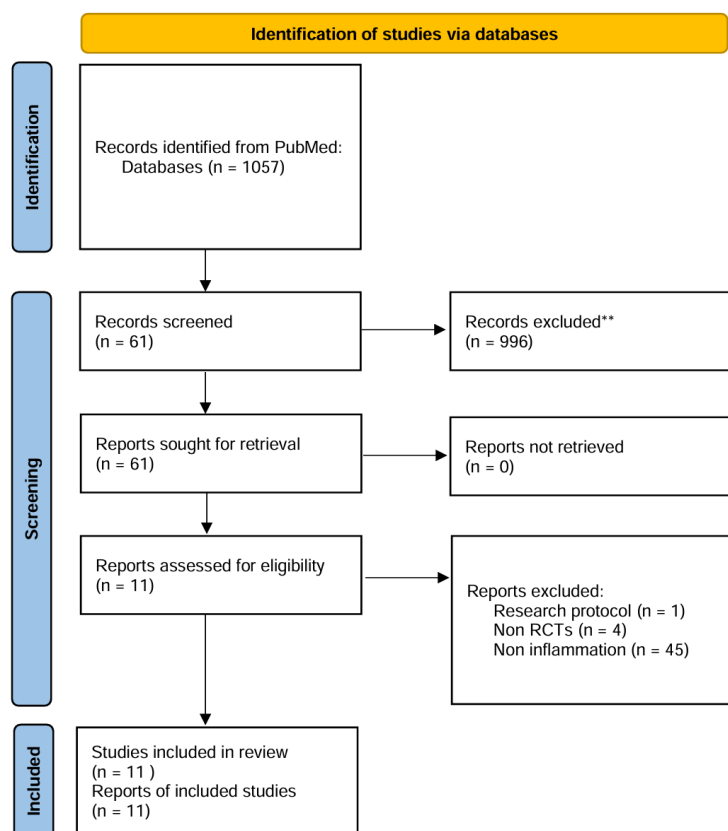
Ethical approval was not required.

## 4 Results

### 4.1 Search and study characteristics

A total of 1057 articles were screened. Thirty-two articles met eligibility criteria, including 11 articles. This is represented in the PRISMA flow diagram (**Figure 2**). Study characteristics were extracted from primary studies only, and all 11 articles were included in the content analysis.

**Figure 2. PRISMA flow diagram.**



Included articles were published between 2008 and 2024 (**Table 2**). Studies were conducted predominantly in the United Kingdom (n=3) and the China (n=3). Studies pertaining to RCT (n=12) methods were identified.

**Table 2. Study characteristics of included articles (n=11 articles).**

Study author	Year	Country	Journal/source of publication	Funding received	Study type
Gillian M. Mackay(62)	2008	United Kingdom	Clinical and Experimental Pharmacology and Physiology	No	RCT
Charles L. Raison(63)	2012	United States	JAMA psychiatry	Yes	RCT

JeremyF.Weinberger(64)	2014	United States	Brain,Behavior,andImmunity	Yes	RCT
Zhang Xiaoling(65)	2018	China	Pakistan journal of pharmaceutical sciences	No	RCT
Chen Mu-Hong(66)	2018	Taiwan (China)	Psychiatry Research	Yes	RCT
Zhi-Yong Cao(67)	2020	China	Journal of Affective Disorders	Yes	RCT
Nastaran Hariri(68)	2020	Iran	Phytotherapy research: PTR	Yes	RCT
Maria Antonietta Nettis(69)	2021	United Kingdom	Neuropsychopharmacology	Yes	RCT
Bernhard T. Baune(70)	2021	Australia	European Neuropsychopharmacology	Yes	RCT
Maria Antonietta Nettis(71)	2023	United Kingdom	Journal of Psychopharmacology	Yes	RCT
Emma Sampson(72)	2024	Germany	International Journal of Neuropsychopharmacology	Yes	RCT

## 4.2 Patient engagement characteristics and identification

The eleven studies included in this review collectively encompassed 907 patients diagnosed with depression, with major depression being the most prevalent form of depression (n=8). The primary diagnostic criterion employed for depression was the DSM-IV (n=7). The majority of the depressed populations studied were middle-aged. The anti-inflammatory drugs employed in the treatment of these patients included Fluoxetine (n=1), Infliximab (n=2), ketamine (n=1), Minocycline (n=2), Votioxetine + celecoxib (n=2), selective serotonin reuptake inhibitors (n=1), Lacquer Tree (n=1). The dispersion in the distribution of these drugs was large (Table 3).

**Table 3. Patient engagement characteristics of included studies (n=11).**

Study author	Sample size	Research grouping	Degree of depression	Diagnostic criteria	Age		Sex	
					T	C	T	C
Gillian M. Mackay(62)	51	T Fluoxetine C Psychological counseling	Moderate/MDD	DSM-IV	39.0 ± 2.4	37.5 ± 2.1	5/23	8/15
Gillian M. Mackay(62)	35	T Fluoxetine+T3 C Psychological counseling	Moderate/MDD	DSM-IV	44.3 ± 4.1	37.5 ± 2.1	4/8	8/15
Charles L. Raison(63)	60	T Infliximab C Placebo	MDD	DSM-IV	42.5±8.2	44.3±9.4	67%	67%
JeremyF.Weinberger(64)	60	T Infliximab C Placebo	MDD	DSM-IV	41.1±8.0	46.0±9.8	7/12	4/13
Zhang Xiaoling(65)	130	T C	NR	NR	36.2±5.4	35.7±6.2	30/35	29/36
Chen Mu-Hong(66)	NR	T 0.5mg/kg ketamine C Placebo	MDD	DSM-IV	48.46±11.01	48.63±8.12	12.50 %	37.50 %
Chen Mu-Hong(66)	NR	T 0.2mg/kg ketamine C Placebo	MDD	DSM-IV	44.96±12.31	48.63±8.12	26.10 %	37.50 %
Zhi-Yong Cao(67)	56	T SSRI + GZA C SSRI + PBO	MDD	DSM-V	28.50(21.00, 33.25)	23.00 (21.00, 28.00)	14/12	23/7
Nastaran Hariri(68)	60	T Lacquer tree C Placebo	Mild/moderate	DSM-IV	42.19±8.44	44.03±11.80	0	0
Maria Antonietta Nettis(69)	44	T Minocycline C placebo	MDD	DSM-V	47.0±10.0	43.7±10.7	44.4 %	42.90 %
Bernhard T. Baune(70)	200	T Votioxetine + celecoxib C votioxetine + placebo	MDD	DSM-IV	45(33.5, 45)	48(30.5, 48)	46%	38%
Maria Antonietta Nettis(71)	44	T Minocycline C placebo	MDD	DSM-V	25-60	25-60	NR	
Emma Sampson(72)	119	T Votioxetine + celecoxib C votioxetine + placebo	MDD	DSM-IV	49(39.5, 57)	47(29, 54)	15/28	14/31

T indicates experimental treatment method in the study subgroup. C indicates placebo method or other common treatment. MDD indicates major depressive disorder. Sex takes the form of male/female ratios or percentages are shown. \*Marked places are for median and interquartile representation. Places marked with # denote minimum and maximum values. NR denotes not reported. DSM-IV and DSM-V denote the fourth and fifth editions, respectively, of the American Psychiatric Association's Diagnostic and Statistical Manual of Mental Disorders.

### 4.3 Time and inflammatory index

In the eleven studies that incorporated drug treatment cycles ranging from two to eighteen weeks, the vast majority of inflammatory markers examined cumulatively were undetectable in depressed patients. The inflammatory markers that were reasonably detectable in patients with depression in the clinical studies included CRP, hs-CRP, sTNFR1, sTNFR2, IL-2, IL-6, and TNF- $\alpha$ . The utilisation of hs-CRP as an inflammation indicator could be approached via a stratified strategy, e.g., by establishing cut-off levels for hsCRP at 3 mg/L. The benefits of this stratification remain to be elucidated. The merits of such stratified analyses are yet to be demonstrated. A thorough review of the extant literature reveals that the concept of inflammation remains ambiguous in these studies, with the methodology for assessing the dynamic recovery of depression still relying on traditional depression rating scales. Furthermore, there is a paucity of investigation into the concept of inflammation and the indicators of inflammation mentioned in the study's methodology (**Table 4**).

**Table 4. Time and inflammatory index**

Study author	Time	Inflammatory index
Gillian M. Mackay(62)	18W	IL-2, CRP
Charles L. Raison(63)	12W	hs-CRP
Jeremy F. Weinberger(64)	8W	hs-CRP, sTNFR1, sTNFR2
Zhang Xiaoling(65)	6W	IL-2, IL-6, TNF- $\alpha$
Chen Mu-Hong(66)	2W	CRP, IL-6, TNF- $\alpha$
Zhi-Yong Cao(67)	4W	CRP, IL-6, TNF- $\alpha$ , IL-1 $\beta$ , IFN- $\gamma$ , cortisol
Nastaran Hariri(68)	12W	CRP, IL-6, TNF- $\alpha$
Maria Antonietta Nettis(69)	4W	hs-CRP, IL-6
Bernhard T. Baune(70)	6W	hs-CRP
Maria Antonietta Nettis(71)	4W	CRP, hs-CRP, IFN- $\gamma$ , TNF- $\alpha$ , IL-1 $\beta$ , IL-2, IL-4, IL-6, IL-8, IL-10, IL-12p70, IL-13
Emma Sampson(72)	6W	hs-CRP

The following section provides an explanation of the abbreviated terms.

IL-2: Interleukin-2; CRP: C-reactive protein; hs-CRP: High-sensitivity C-reactive protein; sTNFR1: Soluble Tumor Necrosis Factor Receptor 1; sTNFR2: Soluble Tumor Necrosis Factor Receptor 2; IL-6: Interleukin-6; TNF- $\alpha$ : Tumor Necrosis Factor- $\alpha$ ; IFN- $\gamma$ : Interferon- $\gamma$ ; IL-1 $\beta$ : Interleukin-1 $\beta$ ; IL-4: Interleukin-4; IL-8: Interleukin-8; IL-10: Interleukin-10; IL-12p70: Interleukin-12p70; IL-13: Interleukin-13



#### 4.4 Benefits and challenges of patient engagement

Anti-inflammatory strategies have been shown to have the potential to improve symptoms in the treatment of depression. Studies using glycopyrrolate (GZA) as an adjunctive treatment found that patients treated with an SSRI + GZA had more pronounced remission of depressive symptoms and higher rates of treatment response and remission at 2 and 4 weeks of treatment compared to the placebo group. This finding suggests that by reducing inflammation, it may enhance the mood symptoms of depressed patients and improve treatment outcomes. Anti-inflammatory treatments help to regulate the inflammatory state in depressed patients. A study of overweight or obese depressed women found that supplementation with lacuna (*Rhus coriaria* L.) in combination with a calorie-restricted diet significantly reduced the patients' body weight, BMI, body fat, visceral fat levels, and levels of MDA, an indicator of oxidative stress. Additionally, serum levels of IL-6 and TNF-alpha (although not to a significant level) and hs-CRP levels were significantly reduced. This finding suggests that anti-inflammatory strategies may have a positive effect on the inflammatory state of the body in patients with depression by regulating the levels of inflammatory factors, thereby improving the condition.

A significant challenge for precision treatment is the existence of substantial inter-patient variability in response to anti-inflammatory treatments, as evidenced by a study of minocycline in patients with treatment-resistant depression. While no substantial difference was observed in terms of improvement in depressive symptoms between the minocycline and placebo groups, further stratified analyses revealed that patients with baseline hsCRP levels  $\geq 3$  mg/L exhibited a more favourable response to minocycline, while those with  $< 3$  mg/L demonstrated a less favourable response. This finding underscores the notion that a patient's baseline inflammation level exerts a significant influence on their response to anti-inflammatory therapy. Consequently, there is an imperative for the development of more precise biomarkers to facilitate the screening of patients who may benefit from personalised treatment regimens. A further critical concern pertains to the safety of anti-inflammatory drugs, which is a pivotal consideration in clinical practice. Some studies have identified potential risks associated with certain drugs. For instance, celecoxib, when studied as an adjunct to the antidepressant vortioxetine, was found to be non-inferior to a placebo in the treatment of depression. However, the drug itself carries a risk of side effects. Therefore, when selecting anti-inflammatory drugs for depression treatment, it is crucial to carefully weigh efficacy against safety to ensure that the benefits outweigh the risks for patients during treatment.

Inflammatory marker levels might be able to predict how a patient will respond to anti-inflammatory treatment. For example, the levels of certain markers like CRP and TNF at the start of treatment have been linked to how well a drug called infliximab works in treating severe depression. Patients with higher starting levels of these markers tend to do better with infliximab, while those with lower CRP levels do better with a placebo. This finding underscores the potential of inflammatory markers as significant predictors of treatment response, thereby aiding in the informed decision-making process for clinical practitioners.

We still don't fully understand how inflammatory markers affect the treatment of depression, and more research is needed to figure out what they mean and how important they are. One study looked at fluoxetine and escitalopram for treating depression. It found that levels of inflammatory factors like IL - 2, IL - 6, and TNF -  $\alpha$  went down a lot in both groups after treatment. But the drop was bigger in the escitalopram group, and this was related to how much the depressive symptoms improved. This finding suggests that distinct inflammatory factors may contribute differently to the pathophysiology of depression and respond variably to treatment.

Further research is necessary to elucidate their mechanisms of action. Anti-inflammatory strategies for treating depression have shown benefits only in cases where patients exhibit high inflammatory factors. However, these strategies also face challenges, such as individual differences and drug safety. Inflammation-related biomarkers have been found to be strongly associated with treatment efficacy. As outlined in Table 3, the cost of testing for these inflammatory indicators in a standard hospital in China ranges from 1000 to 1500 RMB, while traditional therapies, based on the experience of our group's common discussion that 1000 RMB is sufficient to complete a course of depression treatment in any hospital in China. It is evident that the drug regimens employed in conjunction with anti-inflammatory strategies or those intended to calm inflammation are less generalisable.

Future research should address the following questions:

- (1) How can we find out if a depressed patient has a strong inflammatory response?
- (2) Should the goal of treating depression with anti-inflammatory methods be to stop the inflammation or just to make the depression better?
- (3) If a patient takes both regular drugs and anti-inflammatory drugs, how do we classify these drugs?
- (4) Do psychiatrists have a clear list of which anti-inflammatory drug combinations to use?
- (5) Can using anti-inflammatory drugs help depressed patients take their medicine more regularly and get better faster?

The above five questions should be thoroughly investigated in the development of anti-inflammatory-based treatments for depression, and we call on psychiatrists, neurological surgeons, and psychotherapists to be open and transparent in their research and to publish their findings.

## 5 Discussion

A scoping review was conducted to identify examples of medications based on anti-inflammatory strategies for the treatment of depression. This review yielded a substantial amount of information for future research in this field. While the prevalence of anti-inflammatory strategy-based medications for depression is currently low, the included studies accommodated 907 patients in total, with treatment based on anti-inflammatory strategies exhibiting significant variation.

The findings of the present literature review section revealed that the immune mechanisms of inflammation do not apply to depression. In cellular and animal studies, experimental models and intervention protocols are fixed, which facilitates the placement of confounding factors within a manageable range. The role of immune inflammation in depression is convincing without taking into account the multitude of factors that contribute to the pathogenesis of depression, and is limited to the specific way in which the experimental model is modelled. A particular experimental model of depression itself stimulates depression through inflammatory immune mechanisms (73,74). However, the conditions under which humans acquire depression are uncertain and could be inheritance, environmental changes, acute event stress, etc. (75,76). We hypothesise that some specific triggers of depression are consistent with inflammatory immune mechanisms. Yet, triggers of depression are not usually considered in clinical guidelines for the treatment of depression. Clinical experience within our team has revealed that depression is treated with psychotherapy (the specific type of which depends on the patient's preferences) when available, and in cases where psychotherapy is ineffective or of low benefit, with antidepressant medication. For patients with depression accompanied by

underlying diseases, priority is given to treating the underlying diseases, with psychiatry providing assistance in the synergistic treatment of depression. In the context of depression accompanied by underlying diseases, the hypothesis that immunoinflammation alone can explain the pathological mechanisms of depression is not substantiated. The emergence of anti-inflammatory strategies for the treatment of depression appears to be an endeavour to circumvent the conventional treatment pathway for depression by exploring an alternative inflammatory-immune etiological pathway. A comparison of the potential targets mentioned in the literature review section with the treatment protocols in the randomised controlled studies suggests that this subversive translation is inadequate. Secondly, the new approach to treating depression is much more expensive than the traditional methods. This is because the new pathway may involve more costly drugs, additional tests to monitor inflammation levels, or longer treatment periods, which all contribute to the higher overall cost.

As demonstrated in the literature review section of this paper, the feasibility of treating depression based on anti-inflammatory strategies is derived from inflammatory vesicles (as hypothesised). The hypothesis is that stress activates the NLRP3 inflammasome, which prompts caspase-1 to cleave precursor forms of interleukin-1 $\beta$  (pro-IL-1 $\beta$ ) and interleukin-18 (pro-IL-18). The resultant process of NLRP3 inflammasome activation produces the mature inflammatory cytokines IL-1 $\beta$  and IL-18 (77). These cytokines then activate microglia and astrocytes, which, in turn, release interleukin-6 (IL-6), tumour necrosis factor- $\alpha$  (TNF- $\alpha$ ), and other molecules (78). This process of increased release of inflammatory mediators (79) could explain why inflammatory indicators in clinical studies frequently refer to IL-1 $\beta$ , IL-6 and TNF- $\alpha$ . However, one of the clinical studies reported that the vast majority of the cytokines were below the detected levels (71), which allows two inferences to be drawn.

The initial hypothesis is that inflammatory vesicles are inadequate in explaining the inflammatory pathogenesis of depression. The secondary hypothesis is that the inflammation indicator is not reasonably set. In order to comprehensively discuss the potential clinical application of the inflammatory pathological mechanism of depression, it is hypothesized that the inflammation indicator is not set up rationally. A salient point is that, according to the activation process of inflammatory vesicles, the reduction of these vesicles in the blood of depressed patients to normal range levels by anti-inflammatory treatment is indicative of the therapeutic endpoint being reached (this set of assumptions is not mentioned in the 11 studies).

It is recommended, based on the assumptions outlined above, that intravenous nano-micro AI robots be used for patients diagnosed with depression, thus addressing the current research deficit in the field. This recommendation is made on the condition that patients are fully informed of the advantages and disadvantages of this intervention, and that the treatment protocol for intravenous nano-mini-AI robots has been approved by an ethics committee following a thorough review. The present state of AI development is constrained by the utilisation of machine learning algorithms that employ vast informational databases stored in remote servers. This technological framework is inadequate for the comprehension of the intricacies inherent in the human body. Nevertheless, the prevailing strategy for addressing depression, which is predicated on anti-inflammatory methodologies, exhibits a dearth of research endeavours concerning the analysis of diverse inflammatory markers within the human organism and the extrapolation of depression treatment outcomes. The integration of an AI robot, capable of being implanted into the human body via intravenous infusion, signifies a potential paradigm shift, promising a future replete with possibilities.

It is imperative to elucidate the following stages of AI development:(1) The production of all inflammatory mediators or cytokines during the activation of inflammatory vesicles is detected using transcriptomics or single-cell sequencing. All potential inflammatory markers detected are then

analysed for differences using a healthy adult population and a depressed adult population. This process results in the identification of the first potentially usable inflammatory markers. (2) Considering the rapidity of clinical application, it is necessary to analyse the first batch of inflammation indicators in the blood level again to obtain the second batch of inflammation indicators. (3) Considering the difficulty for clinicians to interpret the data of the inflammation indicators, it is necessary to establish the second batch of inflammation indicators in the healthy adult population to establish a constant model, so that we can get the minimum and maximum values of each inflammation indicator in the healthy adult population. (4) Inflammation indicators that establish a norm in the healthy adult population can be used as the final inflammation indicators. (5) At this stage, there is no accurate and objective assessment method for the diagnosis and evaluation of depression in the medical field, and we need to rely on the subjective judgement of psychiatrists and psychologists. The question of whether the final inflammation index can become the gold standard for assessing depression needs to be addressed by psychiatrists and psychologists rather than psychological rating scales (the protocol for assessing the dynamic treatment effect of depression mentioned in 11 studies is the change in the score of psychological rating scales).

In the context of contemporary clinical randomised controlled studies, the methodology employed for the selection of inflammatory indicators remains largely opaque, thereby engendering a sense of distrust among researchers and practitioners who engage with the extant literature. This opacity hinders the accumulation and advancement of knowledge in the field of clinical translational research on the pathological mechanisms of inflammation in depression. To address these concerns, we propose a systematic approach to the organisation of evidence, commencing from the initial phase delineated above. This approach involves the integration of artificial intelligence (AI) technologies to enhance the transparency and reliability of the research process.

It is hypothesised that the AI could assist researchers, psychiatrists and patients with depression to work together to develop new conceptual therapies based on anti-inflammatory strategies. This hypothesis is based on past experience in developing a shared health needs assessment for the AI integration platform (12). Patients can take information from different test results they get at the hospital and put it into the AI system for analysis(80). The AI system will then carefully look at all the information and keep it up to date as new reports come in. This way, it creates a record of the patient's health that is focused on the patient, similar to what a hospital would have(81).

The AI The integration platform will take the patient's data for closed-source computing, and its computing database will come from all user data stored in the master server and Internet data (82), which facilitates patients to quickly and easily access their current depression health assessment report without professional training, and the powerful AI integration platform can provide patients with personalised interpretation of health reports. Should the personalised report indicate recommendations that suggest a potential link between inflammation and depression, the patient's selection of a medication regimen based on an anti-inflammatory approach would serve to significantly bolster treatment beliefs and expectations. During the course of anti-inflammatory medication, patients can submit various medical records and reports to the AI integration platform, which can be used to project medication and health fluctuations. Concurrently, the early warning results will be transmitted to the receiving doctor's terminal, thereby promoting the effectiveness of auxiliary treatment. The use of AI technology has been shown to improve patient care, cut down on wasted medical resources, and enable doctors to quickly identify and start treating patients when something unusual shows up in their health data. AI technology is very sensitive and accurate in medicine. This helps doctors make more exact decisions and create better treatment plans.

A research and development team at Harbin Institute of Technology recently unveiled a pioneering cross-generational research project involving a micro-robot (83). This micro-robot possesses the remarkable capacity to mimic white blood cells in human blood, navigating through cell gaps to reach the designated blood vessel lumen. This advanced man-made micro-robot can envelop medications, enabling precise targeting of injury sites or therapeutic objectives for treatment. This capability stems from a unique internal structure within the micro-robot that facilitates signal transmission to the endpoint, thereby providing real-time feedback on its internal environment. This real-time signal feedback is analogous to that achieved through imaging and blood testing technologies, which similarly provide feedback to the terminal upon the identification of abnormalities within the body. The implementation of this convenient diagnostic test holds significant potential in reducing the economic burden associated with the dynamic monitoring of inflammation in depressed patients. As the team at Harbin Institute of Technology continues to refine this micro-robot, it is anticipated that in the future, interaction with artificial intelligence will become a reality, thereby enhancing its appeal to depressed patients (**Figure 3**).

**Figure 3. A prospective micro-robot application for interaction with depressed patients.**

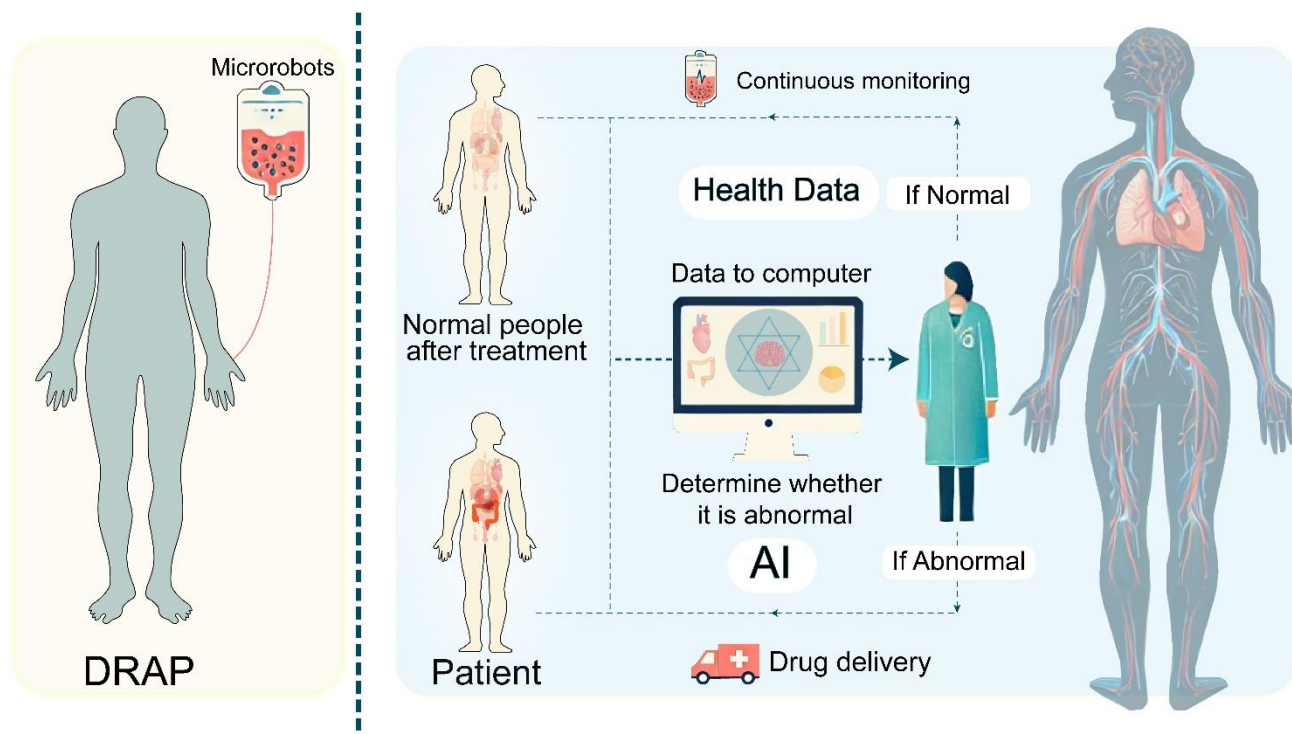


Figure 3 illustrates the utilisation of AI microbots in the treatment of depression, following a period of deep learning and continuous monitoring during the recovery process. The initial phase of treatment involves the administration of a microbot into the patient's body, necessitating the provision of informed consent. The micro-robot then commences a comprehensive examination of the patient's body, systematically uploading the gathered data to the healthcare provider's computer system. This process of continuous monitoring persists for a duration of 24 hours, with hourly data updates. In the event of an inflamed area being detected, the AI deep learning utilises statistical data to compare it with a normal person and determine whether it is abnormal. If the area is determined to be abnormal, the instruction to administer medication is sent to the microbots, and the medication is

administered accordingly. Conversely, if the area is not determined to be abnormal, the microbots proactively notify the healthcare provider and assist in administering the medication until the patient's data returns to the normal threshold. In the second part, the micro-robot enters the patient's body with their consent and by means of a suspension after the patient has recovered from the illness. The micro-robot begins to examine the patient's body and uploads data and statistics to the healthcare worker's computer, and continues to examine and monitor the patient's body for 24 hours, updating the data every hour, and continuing to monitor the human body at all intervals.

## 6 Conclusion

At present, the use of anti-inflammatory strategies for the pharmacological treatment of depression has limited research value and poor feasibility. The future direction of the new concept of anti-inflammatory strategies for the treatment of depression, proposed in the context of the association between inflammation and depression, is that psychiatrists, researchers, and psychotherapists should shift their future focus from pharmacological treatments based on anti-inflammatory strategies to non-pharmacological treatments of anti-inflammatory strategies, such as positive thinking, exercise, and so on. The popularity of purely clinical randomised controlled studies in the depression population is extremely low when considering the financial investment in research and the benefits of translating the results. In the future, public interest studies, low research costs, and research protocols with mass generalisability will be more likely to stimulate the depression community's interest in participating in research.

### Conflict of Interest

The authors declare that the research was conducted in the absence of any commercial or financial relationships that could be construed as a potential conflict of interest.

### Author Contributions

**Yan Bo** and **Yifei Chen** contributed equally to this work and share first authorship.

**Yan Bo's** contributions included the design of the study protocol, its writing, the execution of a systematic search and screening of literature, the reading of randomised controlled studies, the extraction of data, the generalisation of inferences, and the composition of the first and final drafts.

**Yifei Chen's** contributions included the screening of literature, the reading of cellular level studies and animal level studies, and the writing of the literature review.

**Hsu Yi Liang** was responsible for writing about the future of artificial intelligence applied to the treatment of depression.

**Haoran Dai** did the art editing for Figure 3 of the article.

**Fengjiao Zhao** downloaded the literature and translated the AI section of the manuscript.

**Ming Wu** recruited the research team, planned the clinical research team discussions, and coordinated the clinical research resources.

**Youwei Wang** was responsible for providing funding to support the study.

**Ren Sha** provided funding to support the study and acted as the study fund management manager for the study team. In this capacity, Ren Sha was responsible for study fund risk management decisions.

### **Funding**

Youwei Wang and Ren Sha provided funding to support the study.

### **Acknowledgments**

Thanks to Miss Jingyi Li from North China University of Science and Technology and Miss Yuanyin Deng from Zhejiang University for providing assistance in document delivery.

In this article, an image from Miller and Raison has been adapted and annotated with a citation.

The study has been registered on the Open Science Framework (OSF) platform at the following address: [osf.io/k9pue](https://osf.io/k9pue).

Registration DOI: <https://doi.org/10.17605/OSF.IO/A64GC>

### **Abbreviation**

AI=artificial intelligence

NSAIDs=non-steroidal anti-inflammatory drugs

NLRP3=nucleotide-binding oligomerization domain-like receptor family pyrin domain-containing 3

HSPs=heat shock proteins

ROS=reactive oxygen species

SNS=sympathetic nervous system

HPA=hypothalamic-pituitary-adrenal

BBB=blood-brain barrier

DAMPs=damage-associated molecular patterns

BDNF=brain-derived neurotrophic factor

IL-1 $\beta$ =interleukin-1 beta

TNF- $\alpha$ =tumor necrosis factor-alpha

IL-6=interleukin-6

NTS=nucleus tractus solitarius

MMPs=matrix metalloproteinases

Evs=extracellular vesicles

miRNAs=microRNAs

RCT=randomized controlled trial

DSM-IV=Diagnostic and Statistical Manual of Mental Disorders-IV

DSM-V=Diagnostic and Statistical Manual of Mental Disorders-V

CRP=C-reactive protein

hs-CRP=high-sensitivity C-reactive protein

sTNFR1=soluble tumor necrosis factor receptor 1

sTNFR2=soluble tumor necrosis factor receptor 2

IFN- $\gamma$ =interferon- $\gamma$

IL-1 $\beta$ =interleukin-1 $\beta$

IL-4=interleukin-4

IL-8=interleukin-8

IL-10=interleukin-10

IL-12p70=interleukin-12p70

IL-13=interleukin-13

GZA=glycopyrrolate

SSRI=selective serotonin reuptake inhibitor

MDA=malondialdehyde

PRISMA=preferred reporting items for systematic reviews and meta-analyses

GRIPP2=guidance for reporting involvement of patients and the public version 2

JBI=joanna briggs institute

OSF=Open Science Framework

NF- $\kappa$ B=nuclear factor kappa-B

P2X7R=P2X purinoceptor 7

SGLT2=sodium-glucose cotransporter 2



AMPK=AMP-activated protein kinase

BDNF=brain-derived neurotrophic factor

TrkB=tropomyosin receptor kinase B

PI3K=phosphatidylinositol 3-kinase

Akt=protein kinase B

ASC=apoptosis-associated speck-like protein containing a CARD

TLR4=toll-like receptor 4

FoxO1=forkhead box O1

CREB=cyclic AMP response element-binding protein

CRS=chronic restraint stress

SGKL=liver-sparing granules

PBM=brain-gut photobiomodulation

PKC $\zeta$ =protein kinase C zeta

ERVs=endogenous retroviruses

BLA=basolateral amygdala

LT=leukotrienes

TNF-alpha=tumor necrosis factor-alpha

LPS=lipopolysaccharide

PUFAs=n-3 polyunsaturated fatty acids

CUMS=chronic unpredictable mild stress

DRAP=direct rapid acting parenteral

## References

1. Beurel E, Toups M, Nemeroff CB. The Bidirectional Relationship of Depression and Inflammation: Double Trouble. *Neuron*. 2020 Jul 22;107(2):234–56.
2. Bo Y, Lu Q, Li B, Sha R, Yu H, Miao C. The role of platelets in central hubs of inflammation: A literature review. *Medicine (Baltimore)*. 2024 May 10;103(19):e38115.
3. Harsanyi S, Kupcova I, Danisovic L, Klein M. Selected Biomarkers of Depression: What Are the Effects of Cytokines and Inflammation? *Int J Mol Sci*. 2022 Dec 29;24(1).

4. Gold SM, Irwin MR. Depression and immunity: inflammation and depressive symptoms in multiple sclerosis. *Immunol Allergy Clin North Am*. 2009 May;29(2):309–20.
5. Qiu W, Cai X, Zheng C, Qiu S, Ke H, Huang Y. Update on the Relationship Between Depression and Neuroendocrine Metabolism. *Front Neurosci*. 2021;15:728810.
6. Lucido MJ, Bekhbat M, Goldsmith DR, Treadway MT, Haroon E, Felger JC, et al. Aiding and Abetting Anhedonia: Impact of Inflammation on the Brain and Pharmacological Implications. *Pharmacol Rev*. 2021 Jul;73(3):1084–117.
7. Andrade C. Anti-Inflammatory Treatments for Depression: Perspectives on How to Read a Meta-Analysis Critically. *J Clin Psychiatry*. 2019 May 21;80(3):19f12907.
8. Bai S, Guo W, Feng Y, Deng H, Li G, Nie H, et al. Efficacy and safety of anti-inflammatory agents for the treatment of major depressive disorder: a systematic review and meta-analysis of randomised controlled trials. *J Neurol Neurosurg Psychiatry*. 2020 Jan;91(1):21–32.
9. Köhler O, Benros ME, Nordentoft M, Farkouh ME, Iyengar RL, Mors O, et al. Effect of anti-inflammatory treatment on depression, depressive symptoms, and adverse effects: a systematic review and meta-analysis of randomized clinical trials. *JAMA Psychiatry*. 2014 Dec 1;71(12):1381–91.
10. Zhao F. Is cognitive behavioral therapy an efficacious treatment for psychological interventions in body dysmorphic disorders? A meta-analysis based on current evidence from randomized controlled trials. *Journal of Affective Disorders*. 2024;
11. Apweiler M, Saliba SW, Sun L, Streycek J, Normann C, Hellwig S, et al. Modulation of neuroinflammation and oxidative stress by targeting GPR55 - new approaches in the treatment of psychiatric disorders. *Mol Psychiatry*. 2024 Dec;29(12):3779–88.
12. Miao C, Bo Y, Xu J, Wu Y, Shen J, Fan J, et al. Health Needs Assessment: Comparison of Applications of All-in-One AI Platform during the COVID-19 Pandemic between Mainland China and Hong Kong. *Am J Health Behav*. 2024;
13. Liang Q. Effects of home-based telemedicine and mHealth interventions on blood pressure in stroke patients: a systematic evaluation and meta-analysis of randomized controlled trials. *Journal of Stroke and Cerebrovascular Diseases*. 2024;
14. Becher B, Spath S, Goverman J. Cytokine networks in neuroinflammation. *Nature Reviews Immunology*. 2017 Jan 1;17(1):49–59.
15. Brenton JN, Banwell B, Bergqvist AGC, Lehner-Gulotta D, Gampfer L, Leytham E, et al. Pilot study of a ketogenic diet in relapsing-remitting MS. *Neurol Neuroimmunol Neuroinflamm*. 2019 Jul;6(4):e565.
16. Cheng Y, Pardo M, Armini R de S, Martinez A, Mouhsine H, Zagury JF, et al. Stress-induced neuroinflammation is mediated by GSK3-dependent TLR4 signaling that promotes susceptibility to depression-like behavior. *Brain Behav Immun*. 2016 Mar;53:207–22.
17. Qin Z, Shi DD, Li W, Cheng D, Zhang YD, Zhang S, et al. Berberine ameliorates depression-like behaviors in mice via inhibiting NLRP3 inflammasome-mediated neuroinflammation and preventing neuroplasticity disruption. *J Neuroinflammation*. 2023 Mar 1;20(1):54.
18. Bawadood AS, Al-Abbasi FA, Alghamdi AM, Alqurashi MM, Sheikh RA, Alzarea SI, et al. Fustin alleviates lipopolysaccharide-induced anxiety-depression-like performances by modulation of oxidative stress/neuroinflammatory markers/ NF- $\kappa$ B/caspase-3/BDNF expression in rodents. *Eur Rev Med Pharmacol Sci*. 2024 Jan;28(1):419–32.

19. Chen W, Chen Y, Cheng W, Li P, Shen J, Tong T, et al. Acupuncture exerts preventive effects in rats of chronic unpredictable mild stress: The involvement of inflammation in amygdala and brain-spleen axis. *Biochem Biophys Res Commun*. 2023 Feb 26;646:86–95.
20. Miller AH, Raison CL. The role of inflammation in depression: from evolutionary imperative to modern treatment target. *Nat Rev Immunol*. 2016 Jan;16(1):22–34.
21. Bo Y. AI perspectives on the present and future of antidepressant pharmaceutical treatment based on anti-inflammatory strategies: A scoping review protocol of randomised controlled clinical trials [Internet]. 2024. Available from: [osf.io/k9pue](https://osf.io/k9pue)
22. Riegelman A, Topor MK, van Veggel N, Yeung SK, Call M, Mellor DT, Coles5, Katherine S. Corker6, Gilad Feldman7, David Moreau8, Thomas Nordström4, Jade S. Pickering9,. Available from: <https://doi.org/g5fj>
23. Muhammad RN, Albahairy MA, Abd El Fattah MA, Ibrahim WW. Empagliflozin-activated AMPK elicits neuroprotective properties in reserpine-induced depression via regulating dynamics of hippocampal autophagy/inflammation and PKC $\zeta$ -mediated neurogenesis. *Psychopharmacology (Berl)*. 2024 Dec;241(12):2565–84.
24. Wang C, Cui C, Xie X, Chen B, Feng L, Jiang P. Calcitriol attenuates lipopolysaccharide-induced neuroinflammation and depressive-like behaviors by suppressing the P2X7R/NLRP3/caspase-1 pathway. *Psychopharmacology (Berl)*. 2024 Jul;241(7):1329–43.
25. Xie Y, Wu Z, Sun L, Zhou L, Xiao L, Wang H, et al. Swimming exercise reverses chronic unpredictable mild stress-induced depression-like behaviors and alleviates neuroinflammation and collapsing response mediator protein-2-mediated neuroplasticity injury in adult male mice. *Neuroreport*. 2022 Apr 6;33(6):272–82.
26. Ma M, Ren Q, Yang C, Zhang JC, Yao W, Dong C, et al. Antidepressant effects of combination of brexpiprazole and fluoxetine on depression-like behavior and dendritic changes in mice after inflammation. *Psychopharmacology (Berl)*. 2017 Feb;234(4):525–33.
27. Bao H, Yan J, Huang J, Deng W, Zhang C, Liu C, et al. Activation of endogenous retrovirus triggers microglial immuno-inflammation and contributes to negative emotional behaviors in mice with chronic stress. *J Neuroinflammation*. 2023 Feb 15;20(1):37.
28. Rostevanov IS, Betesh-Abay B, Nassar A, Rubin E, Uzzan S, Kaplanski J, et al. Montelukast induces beneficial behavioral outcomes and reduces inflammation in male and female rats. *Front Immunol*. 2022;13:981440.
29. Li J, Li Y, Duan W, Zhao Z, Yang L, Wei W, et al. Shugan granule contributes to the improvement of depression-like behaviors in chronic restraint stress-stimulated rats by altering gut microbiota. *CNS Neurosci Ther*. 2022 Sep;28(9):1409–24.
30. Nouri A, Hashemzadeh F, Soltani A, Saghaei E, Amini-Khoei H. Progesterone exerts antidepressant-like effect in a mouse model of maternal separation stress through mitigation of neuroinflammatory response and oxidative stress. *Pharm Biol*. 2020 Jan 1;58(1):64–71.
31. Casaril AM, Domingues M, Bampi SR, de Andrade Lourenço D, Padilha NB, Lenardão EJ, et al. The selenium-containing compound 3-((4-chlorophenyl)selenyl)-1-methyl-1H-indole reverses depressive-like behavior induced by acute restraint stress in mice: modulation of oxido-nitrosative stress and inflammatory pathway. *Psychopharmacology (Berl)*. 2019 Oct;236(10):2867–80.
32. Celebi G, Gocmez SS, Ozer C, Duruksu G, Yazır Y, Utkan T. Propolis prevents vascular endothelial dysfunction by attenuating inflammation and oxidative damage in the chronic unpredictable stress model of depression in rats. *J Pharm Pharmacol*. 2023 Nov 23;75(11):1418–29.

33. Hu L, Zeng X, Yang K, Peng H, Chen J. n-3 polyunsaturated fatty acids improve depression-like behavior by inhibiting hippocampal neuroinflammation in mice via reducing TLR4 expression. *Immun Inflamm Dis*. 2022 Nov;10(11):e707.
34. Huang N, Wang Y, Zhan G, Yu F, Li S, Hua D, et al. Contribution of skeletal muscular glycine to rapid antidepressant effects of ketamine in an inflammation-induced mouse model of depression. *Psychopharmacology (Berl)*. 2019 Dec;236(12):3513–23.
35. Arshad HM, Ahmad FUD, Lodhi AH. Methanolic Extract of *Aerva javanica* Leaves Prevents LPS-Induced Depressive Like Behavior in Experimental Mice. *Drug Des Devel Ther*. 2022;16:4179–204.
36. Barua CC, Haloi P, Saikia B, Sulakhiya K, Pathak DC, Tamuli S, et al. *Zanthoxylum alatum* abrogates lipopolysaccharide-induced depression-like behaviours in mice by modulating neuroinflammation and monoamine neurotransmitters in the hippocampus. *Pharm Biol*. 2018 Dec;56(1):245–52.
37. Gong M, Wang J, Song L, Wu X, Wang Y, Li B, et al. Role of BDNF-TrkB signaling in the antidepressant-like actions of loganin, the main active compound of *Corni Fructus*. *CNS Neurosci Ther*. 2023 Dec;29(12):3842–53.
38. Guo LT, Wang SQ, Su J, Xu LX, Ji ZY, Zhang RY, et al. Baicalin ameliorates neuroinflammation-induced depressive-like behavior through inhibition of toll-like receptor 4 expression via the PI3K/AKT/FoxO1 pathway. *J Neuroinflammation*. 2019 May 8;16(1):95.
39. Hamann FR, Zago AM, Rossato MF, Beck VR, Mello CF, de Brum TF, et al. Antinociceptive and antidepressant-like effects of the crude extract of *Vitex megapotamica* in rats. *J Ethnopharmacol*. 2016 Nov 4;192:210–6.
40. Jiang P, Guo Y, Dang R, Yang M, Liao D, Li H, et al. Salvianolic acid B protects against lipopolysaccharide-induced behavioral deficits and neuroinflammatory response: involvement of autophagy and NLRP3 inflammasome. *J Neuroinflammation*. 2017 Dec 6;14(1):239.
41. Li P, Zhang F, Li Y, Zhang C, Yang Z, Zhang Y, et al. Isoginkgetin treatment attenuated lipopolysaccharide-induced monoamine neurotransmitter deficiency and depression-like behaviors through downregulating p38/NF- $\kappa$ B signaling pathway and suppressing microglia-induced apoptosis. *J Psychopharmacol*. 2021 Oct;35(10):1285–99.
42. Liu S, Xu S, Wang Z, Guo Y, Pan W, Shen Z. Anti-Depressant-Like Effect of Sinomenine on Chronic Unpredictable Mild Stress-Induced Depression in a Mouse Model. *Med Sci Monit*. 2018 Oct 26;24:7646–53.
43. Nazir S, Farooq RK, Nasir S, Hanif R, Javed A. Therapeutic effect of Thymoquinone on behavioural response to UCMS and neuroinflammation in hippocampus and amygdala in BALB/c mice model. *Psychopharmacology (Berl)*. 2022 Jan;239(1):47–58.
44. Sung WW, Yeh TM, Shih WL. Additive effect of clove essential oil combined with hydrogen inhalation improves psychological harm caused by lipopolysaccharide in mice. *BMC Complement Med Ther*. 2024 Nov 15;24(1):399.
45. Zhao XH, An N, Xia MH, Liu WP, Wang QQ, Bao JZ. Nootkatone Improves Chronic Unpredictable Mild Stress-Induced Depressive-Like Behaviors by Repressing NF- $\kappa$ B/NLRP3-Mediated Neuroinflammation. *Chin J Integr Med*. 2023 Jan;29(1):37–43.
46. Zhuo R, Cheng X, Luo L, Yang L, Zhao Y, Zhou Y, et al. Cinnamic Acid Improved Lipopolysaccharide-Induced Depressive-Like Behaviors by Inhibiting Neuroinflammation and Oxidative Stress in Mice. *Pharmacology*. 2022;107(5–6):281–9.
47. Zhao X, Kong D, Zhou Q, Wei G, Song J, Liang Y, et al. Baicalein alleviates depression-like behavior in

- rotenone- induced Parkinson's disease model in mice through activating the BDNF/TrkB/CREB pathway. *Biomed Pharmacother.* 2021 Aug;140:111556.
48. Jia Z, Yu W, Li X, Dong T, Wang X, Li J, et al. Du-moxibustion ameliorates depression-like behavior and neuroinflammation in chronic unpredictable mild stress-induced mice. *J Affect Disord.* 2024 Aug 1;358:211–21.
  49. Shen J, Hao C, Yuan S, Chen W, Tong T, Chen Y, et al. Acupuncture alleviates CUMS-induced depression-like behaviors of rats by regulating oxidative stress, neuroinflammation and ferroptosis. *Brain Res.* 2024 Mar 1;1826:148715.
  50. Tong T, Hao C, Shen J, Liu S, Yan S, Aslam MS, et al. Electroacupuncture ameliorates chronic unpredictable mild stress-induced depression-like behavior and cognitive impairment through suppressing oxidative stress and neuroinflammation in rats. *Brain Res Bull.* 2024 Jan;206:110838.
  51. Sancho-Balsells A. Brain–gut photobiomodulation restores cognitive alterations in chronically stressed mice through the regulation of Sirt1 and neuroinflammation. *Journal of Affective Disorders.* 2024;
  52. Harrington D, D'Agostino RBS, Gatsonis C, Hogan JW, Hunter DJ, Normand SLT, et al. New Guidelines for Statistical Reporting in the Journal. *N Engl J Med.* 2019 Jul 18;381(3):285–6.
  53. Arksey H, O'Malley L. Scoping studies: towards a methodological framework. *International Journal of Social Research Methodology.* 2005 Feb;8(1):19–32.
  54. Levac D, Colquhoun H, O'Brien KK. Scoping studies: advancing the methodology. *Implementation Sci.* 2010 Dec;5(1):69.
  55. Chapter 11: Scoping reviews. In: *JBIR Manual for Evidence Synthesis* [Internet]. JBI; 2020 [cited 2024 Dec 13]. Available from: [https://jbi-global-wiki.refined.site/space/MANUAL/355863557/Previous+versions?attachment=/download/attachments/355863557/JBI\\_Reviewers\\_Manual\\_2020June.pdf&type=application/pdf&filename=JBI\\_Reviewers\\_Manual\\_2020June.pdf#page=406](https://jbi-global-wiki.refined.site/space/MANUAL/355863557/Previous+versions?attachment=/download/attachments/355863557/JBI_Reviewers_Manual_2020June.pdf&type=application/pdf&filename=JBI_Reviewers_Manual_2020June.pdf#page=406)
  56. Tricco AC, Lillie E, Zarin W, O'Brien KK, Colquhoun H, Levac D, et al. PRISMA Extension for Scoping Reviews (PRISMA-ScR): Checklist and Explanation. *Ann Intern Med.* 2018 Oct 2;169(7):467–73.
  57. Use of Laboratory Animals in Biomedical and Behavioral Research [Internet]. [cited 2024 Dec 13]. Available from: [https://sc.panda985.com/extdomains/books.google.com/books/about/Use\\_of\\_Laboratory\\_Animals\\_in\\_Biomedical.html?hl=zh-CN&id=kD-cXSnF0m0C](https://sc.panda985.com/extdomains/books.google.com/books/about/Use_of_Laboratory_Animals_in_Biomedical.html?hl=zh-CN&id=kD-cXSnF0m0C)
  58. Carman KL, Dardess P, Maurer M, Sofaer S, Adams K, Bechtel C, et al. Patient And Family Engagement: A Framework For Understanding The Elements And Developing Interventions And Policies. *Health Affairs.* 2013 Feb;32(2):223–31.
  59. Staniszewska S, Brett J, Simera I, Seers K, Mockford C, Goodlad S, et al. GRIPP2 reporting checklists: tools to improve reporting of patient and public involvement in research. *BMJ.* 2017 Aug 2;j3453.
  60. Thomas J, Harden A. Methods for the thematic synthesis of qualitative research in systematic reviews. *BMC Med Res Methodol.* 2008 Dec;8(1):45.
  61. Ryan C, Hesselgreaves H, Wu O, Paul J, Dixon-Hughes J, Moss JG. Protocol for a systematic review and thematic synthesis of patient experiences of central venous access devices in anti-cancer treatment. *Syst Rev.* 2018 Dec;7(1):61.
  62. Mackay GM, Forrest CM, Christofides J, Bridel MA, Mitchell S, Cowlard R, et al. Kynurenine metabolites and

- inflammation markers in depressed patients treated with fluoxetine or counselling. *Clin Exp Pharmacol Physiol*. 2009 Apr;36(4):425–35.
63. Raison CL, Rutherford RE, Woolwine BJ, Shuo C, Schettler P, Drake DF, et al. A randomized controlled trial of the tumor necrosis factor antagonist infliximab for treatment-resistant depression: the role of baseline inflammatory biomarkers. *JAMA Psychiatry*. 2013 Jan;70(1):31–41.
  64. Weinberger JF, Raison CL, Rye DB, Montague AR, Woolwine BJ, Felger JC, et al. Inhibition of tumor necrosis factor improves sleep continuity in patients with treatment resistant depression and high inflammation. *Brain Behav Immun*. 2015 Jul;47:193–200.
  65. Xiaoling Z, Yunping H, Yingdong L. Analysis of curative effect of fluoxetine and escitalopram in the depression treatment based on clinical observation. *Pak J Pharm Sci*. 2018 May;31(3(Special)):1115–8.
  66. Chen MH, Li CT, Lin WC, Hong CJ, Tu PC, Bai YM, et al. Rapid inflammation modulation and antidepressant efficacy of a low-dose ketamine infusion in treatment-resistant depression: A randomized, double-blind control study. *Psychiatry Res*. 2018 Nov;269:207–11.
  67. Cao ZY, Liu YZ, Li JM, Ruan YM, Yan WJ, Zhong SY, et al. Glycyrrhizic acid as an adjunctive treatment for depression through anti-inflammation: A randomized placebo-controlled clinical trial. *J Affect Disord*. 2020 Mar 15;265:247–54.
  68. Hariri N, Darafshi Ghahroudi S, Jahangiri S, Borumandnia N, Narmaki E, Saidpour A. The beneficial effects of sumac (*Rhus coriaria* L.) supplementation along with restricted calorie diet on anthropometric indices, oxidative stress, and inflammation in overweight or obese women with depression: A randomized clinical trial. *Phytother Res*. 2020 Nov;34(11):3041–51.
  69. Nettis MA, Lombardo G, Hastings C, Zajkowska Z, Mariani N, Nikkheslat N, et al. Augmentation therapy with minocycline in treatment-resistant depression patients with low-grade peripheral inflammation: results from a double-blind randomised clinical trial. *Neuropsychopharmacology*. 2021 Apr;46(5):939–48.
  70. Baune BT, Sampson E, Louise J, Hori H, Schubert KO, Clark SR, et al. No evidence for clinical efficacy of adjunctive celecoxib with vortioxetine in the treatment of depression: A 6-week double-blind placebo controlled randomized trial. *Eur Neuropsychopharmacol*. 2021 Dec;53:34–46.
  71. Nettis MA, Lombardo G, Hastings C, Zajkowska Z, Mariani N, Nikkheslat N, et al. The interaction between kynurenine pathway, suicidal ideation and augmentation therapy with minocycline in patients with treatment-resistant depression. *J Psychopharmacol*. 2023 Jun;37(6):531–8.
  72. Sampson E, Kavakbasi E, Mills NT, Hori H, Schubert KO, Fourrier C, et al. Emotional Blunting in Depression in the PREDDICT Clinical Trial: Inflammation-Stratified Augmentation of Vortioxetine With Celecoxib. *Int J Neuropsychopharmacol*. 2024 Mar 1;27(3).
  73. Zhang Y, Liu L, Liu YZ, Shen XL, Wu TY, Zhang T, et al. NLRP3 Inflammasome Mediates Chronic Mild Stress-Induced Depression in Mice via Neuroinflammation. *International Journal of Neuropsychopharmacology*. 2015;18(8).
  74. Alcocer-Gómez E, Ulecia-Morón C, Marín-Aguilar F, Rybkina T, Casas-Barquero N, Ruiz-Cabello J, et al. Stress-Induced Depressive Behaviors Require a Functional NLRP3 Inflammasome. *Molecular Neurobiology*. 2016 Sep 1;53(7):4874–82.
  75. Belmaker R.H., Agam Galila. Major Depressive Disorder. *New England Journal of Medicine*. 358(1):55–68.
  76. Remes O, Mendes JF, Templeton P. Biological, Psychological, and Social Determinants of Depression: A Review of Recent Literature. *Brain Sci*. 2021 Dec 10;11(12).

77. Roy S, Arif Ansari M, Choudhary K, Singh S. NLRP3 inflammasome in depression: A review. *International Immunopharmacology*. 2023 Apr 1;117:109916.
78. Schroder K, Tschopp J. The inflammasomes. *Cell*. 2010 Mar 19;140(6):821–32.
79. Dinarello CA. Interleukin-1 in the pathogenesis and treatment of inflammatory diseases. *Blood*. 2011 Apr 7;117(14):3720–32.
80. He Z, Zhang R, Diallo G, Huang Z, Glicksberg BS. Editorial: Explainable artificial intelligence for critical healthcare applications. *Front Artif Intell [Internet]*. 2023 Sep 12 [cited 2024 Dec 7];6. Available from: <https://www.frontiersin.org/journals/artificial-intelligence/articles/10.3389/frai.2023.1282800/full>
81. Aittokallio T, Fang EF. Editorial overview—Artificial intelligence methodologies in structural biology: Bridging the gap to medical applications. *Current Opinion in Structural Biology*. 2024 Aug 1;87:102862.
82. Gao G, Tian D, Li R, Hao X. Application and Development of Artificial Intelligence in Medical Field. In: Lee G, editor. 2018 5TH INTERNATIONAL SYMPOSIUM ON COMPUTER, COMMUNICATION, CONTROL AND AUTOMATION (3CA 2018) [Internet]. Newark: Information Engineering Research Inst, USA; 2018 [cited 2024 Dec 7]. p. 215–9. Available from: <https://www.webofscience.com/wos/alldb/summary/7c974e94-e381-4f33-98b3-3ec609a581e9-013356650f/relevance/1>
83. Shen Y, Jin D, Fu M, Liu S, Xu Z, Cao Q, et al. Reactive wetting enabled anchoring of non-wettable iron oxide in liquid metal for miniature soft robot. *Nat Commun*. 2023 Oct 7;14(1):6276.

## Appendix A

Database: PubMed [to 2024.12.11],

Search Strategy:

-----

1#: (((("Depression"[Mesh]) OR (Depressive Symptoms[Title/Abstract])) OR (Depressive Symptom[Title/Abstract])) OR (Symptom, Depressive[Title/Abstract])) OR (Emotional Depression[Title/Abstract])) OR (Depression, Emotional[Title/Abstract])

2#: (((("Inflammation"[Mesh]) OR (Inflammations[Title/Abstract])) OR (Innate Inflammatory Response[Title/Abstract])) OR (Inflammatory Response, Innate[Title/Abstract])) OR (Innate Inflammatory Responses[Title/Abstract])

3#: (((("Therapeutics"[Mesh]) OR (Therapeutic[Title/Abstract])) OR (Therapy[Title/Abstract])) OR (Therapies[Title/Abstract])) OR (Treatment[Title/Abstract])) OR (Treatments[Title/Abstract])

4#: 1# AND 2# AND 3#