

Systematic review and individual patient data meta-analysis on glucose- 6 – phosphate dehydrogenase activities measured by a semi-quantitative handheld Biosensor

Benedikt Ley^{1,2*}, Laura Rojas Vasquez³, Avyinaeesh Sitsabasan³, Bipin Adhikari^{4,5}, Nabaraj Adhikari⁶, Mohammad Shafiul Alam⁷, Santasabuj Das⁸, Prakash Ghimire⁶, Marcus V. G. Lacerda^{9,10,11}, Ric N. Price^{1,4,5}, Komal Raj Rijal⁶, Lorenz von Seidlein^{4,5}, Arunansu Talukdar¹², Kamala Thriemer¹, Ari Winasti Satyagraha^{13,14}, Arkasha Sadhewa¹, Megha Rajasekhar¹⁵, Robert J. Commons^{1,3}

1. Global Health Division, Menzies School of Health Research and Charles Darwin University, Darwin, Australia
2. Division of Teaching, Menzies School of Health Research and Charles Darwin University, Darwin, Australia
3. General and Subspecialty Medicine, Grampians Health Ballarat, Ballarat, Victoria, Australia
4. Mahidol-Oxford Tropical Medicine Research Unit, Faculty of Tropical Medicine, Mahidol University, Bangkok, Thailand
5. Centre for Tropical Medicine and Global Health, Nuffield Department of Clinical Medicine, University of Oxford, Oxford, UK
6. Central Department of Microbiology, Tribhuvan University, Kathmandu, Nepal
7. International Centre for Diarrhoeal Disease Research, Bangladesh (icddr,b), Dhaka, Bangladesh
8. National Institute of Cholera and Enteric Diseases, Kolkata, India
9. Fundação de Medicina Tropical Dr Heitor Vieira Dourado, Manaus, Brazil
10. Instituto Leônidas e Maria Deane, Fiocruz, Manaus, Brazil
11. University of Texas Medical Branch, Galveston, TX, USA
12. Kolkata Medical College Hospital, India
13. Eijkman Research Center for Molecular Biology, National Research and Innovation Agency, Cibinong, Indonesia
14. EXEINS Health Initiative, Jakarta, Indonesia
15. Centre for Epidemiology and Biostatistics, Melbourne School of Population and Global Health, The University of Melbourne, Melbourne, VIC, Australia

*Corresponding author: benedikt.ley@menzies.edu.au

38 **Abstract**

39 Measurement of glucose-6-phosphate dehydrogenase (G6PD) activity guides hypnozoitocidal
40 treatment of *P. vivax* malaria. The G6PD Standard (SDBiosensor, Republic of Korea) here referred to as
41 “Biosensor” is a quantitative point-of-care diagnostic that measures G6PD activity in U/gHb . The
42 manufacturer recommends cutoffs to define G6PD deficient (≤ 4.0 U/gHb), intermediate (4.1-
43 ≤ 6.0 U/gHb) and normal (> 6.0 U/gHb) individuals. The aim of this individual patient data (IPD) meta-
44 analysis was to evaluate these cutoffs (CRD42023406595).

45 A systematic review identified studies reporting population-level G6PD activity measured by Biosensor,
46 published between January 2017 and May 2023. IPD were collated and standardised. The adjusted
47 male median (AMM) was defined as 100% activity and calculated across all studies (universal AMM)
48 and separately for each setting. The proportion of participants classified as deficient or intermediate
49 were compared using the manufacturer-recommended cutoffs and 30% and 70% of the universal
50 AMM and setting-specific AMM. Associations between G6PD activity and blood sampling method,
51 malaria status, and age were assessed.

52 Eleven studies with 9,724 participants from eight countries were included in this analysis. The universal
53 AMM was 7.7U/gHb and the setting-specific AMMs ranged from 6.2U/gHb to 9.9U/gHb. When using
54 the universal AMM, 4.2% of participants were classified as deficient and 11.9% as intermediate or
55 deficient. The corresponding values were 3.9% and 10.8% for setting-specific cutoffs, and 7.2% and
56 18.3% for manufacturer-recommended definitions for deficient and intermediates respectively. The
57 manufacturer-recommended cutoff for deficient individuals fitted the distribution of G6PD activities
58 better than definitions based on the percentage of AMM. There was no significant association between
59 malaria status or blood sampling method and G6PD activity. Measured G6PD activity decreased in
60 children 1 to 5 years and plateaued thereafter.

61 The manufacturer’s recommended cutoff is conservative but more reliable at categorising G6PD
62 deficient individuals than those based on calculations of 30% activity using the AMM. The observed
63 decrease in G6PD activity in children between 1 to 5 years of age warrants further investigation.

64

65

66 Background

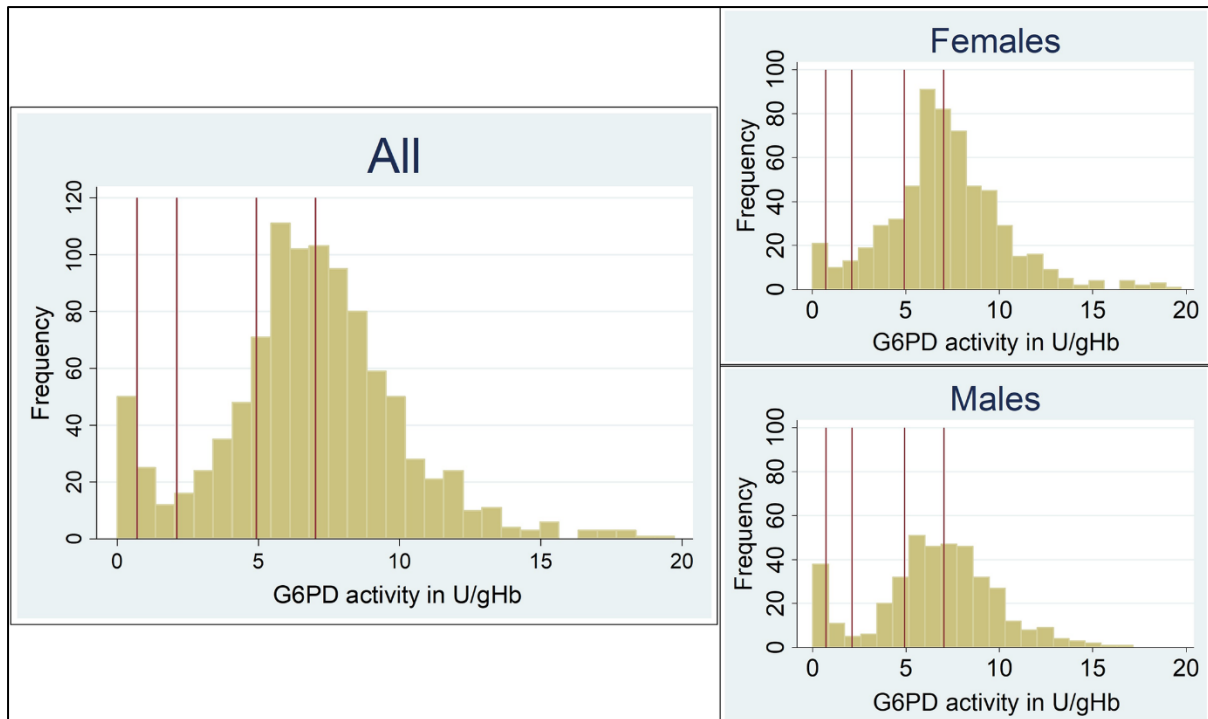
67 Nearly 3.3 billion people are at risk of a *Plasmodium vivax* (*P. vivax*) infection [1-3]. In contrast to other
68 malaria species *P. vivax* forms dormant liver stage hypnozoites that relapse weeks to months after a
69 primary infection causing significant morbidity and mortality [4]. These hypnozoites represent a silent
70 reservoir that complicates the elimination of *P. vivax* [5]. The 8-aminoquinolines, primaquine and
71 tafenoquine, are the only licensed drugs that kill hypnozoites; although both drugs can cause severe
72 haemolysis in patients with low glucose-6-phosphate dehydrogenase enzyme (G6PD) activity [6, 7].

73 G6PD is found in all eukaryotic cells and is essential in human red blood cells (RBCs) to maintain their
74 redox potential [8, 9]. Enzyme activity is measured in international units (U), normalised by a
75 haemoglobin (Hb) measurement (U/gHb) taken at the same time [10]. Since the phenotypic reference
76 method, spectrophotometry, is poorly standardised, the output in U/gHb is converted to percent
77 activity (%) based on the adjusted male median (AMM), to enable comparison across populations [11].
78 To calculate the AMM, the median activity of all male individuals from the same population is
79 calculated, all observations with values less than 10% of this median are then excluded and the median
80 activity is recalculated from the remaining subset and defined as 100% activity [12]. More than 230
81 clinically relevant genetic G6PD variants have been described to date, associated with reduced G6PD
82 activities, collectively called G6PD deficiency [8, 13, 14].

83 The G6PD gene is located on the X-chromosome. Males have one copy of the gene and are hemizygous
84 deficient or normal. Females have two copies and can be either homozygous deficient, homozygous
85 normal, or heterozygous for the gene. Most hemizygous and homozygous deficient individuals have
86 phenotypic G6PD activities below 30% and G6PD normal individuals have activities above 70% to 80%
87 [15]. In comparison, heterozygous females have a wide range of G6PD activities from deficient to
88 normal [8]. Accordingly, G6PD activities within a population show a bimodal distribution, with
89 activities of the majority of individuals normally distributed around the 100% activity mark and a
90 second smaller peak representing hemizygous and homozygous deficient individuals (Fig 1) [16].

91

92 **Fig 1: G6PD activities in samples collected from participants in Bangladesh during a cross-sectional**
93 **survey measured by spectrophotometry**



94

95 *Vertical lines from left to right indicate 10%, 30% 70% and 100% G6PD activity [16]*

96

97 The World Health Organization (WHO) recommends testing patients for G6PD deficiency prior to
98 treatment with daily primaquine regimens to identify patients with reduced activity and tailor their
99 treatment accordingly [17]. Patients with G6PD activity <30% should not receive 7- or 14-day
100 primaquine regimens. Tafenoquine is only recommended for patients with $\geq 70\%$ G6PD activity [18,
101 19]. In 2022 the WHO revised their classification of G6PD variants, recommending that any variant
102 with a median activity <45% (Class B) by spectrophotometry should be considered clinically significant
103 [14, 20, 21]. Although spectrophotometry is the reference method to measure G6PD activity, it is
104 unsuitable for point of care testing [22]. To date, the only point of care test that can reliably
105 discriminate activities between 30% and 70% is the handheld semi-quantitative Biosensor from SD
106 Biosensor (STANDARD G6PD, ROK; Biosensor) [22-25]. The Biosensor generates G6PD (in U/gHb) and
107 haemoglobin (in g/dL) readings from 10 μ l of capillary or venous blood within two minutes. The
108 manufacturer recommends thresholds of 4.0 U/gHb and 6.0 U/gHb to discriminate deficient and
109 intermediate activities respectively [26]. Alignment of these cutoffs with local AMM-derived 30% and
110 70% cutoffs have varied considerably [27]. This individual patient data pooled analysis aimed to assess
111 whether the manufacturer-recommended cutoffs for the Biosensor are universally applicable.

112

113 **Methods**

114 ***Search strategy and selection criteria***

115 A systematic review of Medline, Web of Science, Cochrane Central, Scopus, Clinicaltrials.gov and the
116 WHO International clinical trials registry platform was undertaken to identify studies that measured
117 population-based G6PD activity using the G6PD Standard point of care test (Biosensor) manufactured
118 by SD Biosensor (Republic of Korea) between January 1, 2017, and May 17, 2023, in any language.
119 Search terms used were ((G6PD) OR (G6PD deficiency) OR (Glucose-6-phosphate dehydrogenase) OR
120 (Glucose-6-phosphate dehydrogenase deficiency)) AND ((G6PD Standard) OR (SDBiosensor) OR (SD
121 Biosensor) OR (Standard G6PD) OR tafenoquine). Studies were included if they reported activities of
122 at least 36 randomly selected male individuals older than 1 year from a population expected to have
123 a G6PD distribution consistent with the local population. Four reviewers undertook the systematic
124 review (AS, BL, LRV and RJC) with each article screened by two reviewers and discrepancies resolved
125 by discussion. The protocol was registered with PROSPERO CRD42023406595.
126 Investigators of studies eligible for inclusion were invited to contribute individual patient data in
127 addition to any data from eligible but unpublished studies. Data collected included age, sex, malaria
128 status, G6PD activity (in U/gHb) and haemoglobin (in g/dL) measured by Biosensor, date of G6PD
129 measurement, methodology of blood collection (capillary versus venous), pregnancy status, date of
130 last malaria episode, and history of giving birth, blood loss or major surgery in the previous 6 months.
131 Individual patient data were excluded if missing age, sex, G6PD activity, or haemoglobin, or if
132 haemoglobin was <7 g/dL on the Biosensor measurement, as recommended by the manufacturer.
133 Data were obtained according to ethical approvals from the original study. Our analysis did not require
134 additional ethical approval as the original data approved by ethical review boards were anonymised
135 and unable to be linked to individuals.

136

137 **Definitions**

138 Each combination of country and study group was defined as a 'setting'. The blood sampling technique
139 was categorised as venous or capillary. The AMM was defined as 100% activity and calculated from
140 male participants above one year of age who tested negative for malaria by microscopy or rapid
141 diagnostic test (RDT) and after removal of participants with the lowest 10% of reported G6PD activities
142 [12]. The AMM was calculated for the entire data set (universal AMM) and separately for each setting
143 (setting-specific AMM). G6PD deficient and intermediate status of all included participants were
144 categorised repeatedly: i) as measured activity of less than 30% and 70% of the universal AMM, ii) as
145 measured activity of less than 30% and 70% of the setting-specific AMM, and iii) when applying the
146 manufacturer recommended cut-off of 4.0 U/gHb and 6.0 U/gHb, respectively.

147

148 **Statistical Analysis**

149 All observations were categorised three times based on the different definitions of deficient and
150 intermediate activities and proportions of deficient and intermediate individuals were compared. The
151 distribution of G6PD activities was plotted by sex for the overall population and by setting. The
152 association between blood sampling method (capillary or venous) and G6PD activity was assessed in
153 studies that sampled using both capillary and venous methods. The relationship was analysed using
154 multivariable linear regression adjusting for age, sex, baseline Hb, and malaria status with robust
155 errors and clustering by setting. Using a similar multivariable linear regression model restricted to
156 studies which included participants both with or without malaria, the association between malaria
157 presence and G6PD activity was investigated. The relationship between age and G6PD activity was
158 also investigated in a similar model. Due to a non-linear relationship between age and G6PD activity,
159 a post hoc analysis was undertaken with a generalised estimating equations model to visualise the
160 relationship between G6PD activity and age with fractional polynomial terms fitted for age,
161 adjustment for age, sex, baseline Hb, and blood sampling method and clustering by setting. This
162 relationship was explored separately in all participants, in males and females. Separate sensitivity
163 analyses were undertaken restricted to males with i) a haemoglobin >10 g/dL and ii) excluding those
164 with an activity ≤ 4.0 U/g Hb (presumed deficient).

165 The within-study risk of bias assessment was performed using the QUADAS-2 tool [28]. Analyses were
166 undertaken in Stata (version 17).

167

168 **Results**

169 A total of 322 studies were found in the databases, published between January 1, 2017, and May 17,
170 2023, of which 300 were excluded after screening titles and abstracts (Figure 2). A further 18 studies
171 were excluded because G6PD activity was not measured by Biosensor (n=12), participants were not
172 selected randomly from the whole population (n=4) or the trial was ongoing (n=2). A total of four
173 studies met the eligibility criteria [29-32] and data were available and shared by investigators. Data
174 on sex were not recorded consistently across G6PD categories for one study leading to its exclusion.
175 Data from eight studies unpublished as of May 17, 2023, were also available, providing a total of 11
176 studies on 10,905 participants [33, 34]. Data from 1,181 participants were excluded due to missing
177 variables and haemoglobin measurements <7 g/dL, resulting in 9,724 participants from 11 studies
178 included in the analysis .

179 Data were included from 8 countries: Bangladesh, Brazil, Cambodia, Ethiopia, India, Indonesia, Nepal,
180 and the United States of America. The median age was 30.0 years (interquartile range (IQR) 21.0-43.0),
181 of whom 4,237 (43.6%) were female and 8,938 (91.9%) were sampled using capillary sampling
182 methods. Malaria was recorded in 2,282 (23.5%) participants. No consistent data were available on

183 pregnancy, previous malaria episodes, recent surgery, recent blood loss, or recent blood transfusions.
184 There were 14 unique settings (country and study categories), of which 2 (14%) had unclear or possible
185 risk of bias (Table S1 - QUADAS).
186 The distribution of G6PD activities in male participants showed two peaks consistent with presumed
187 G6PD deficient and G6PD normal populations (Figure 3). Visually, the nadir in the overlapping region
188 between these peaks occurred at ~3.5 U/gHb. The universal AMM, derived from 3,959 males without
189 parasitaemia, was 7.7 U/gHb and from this the 30% cutoff was determined to be 2.3 U/gHb and the
190 70% cutoff was determined to be 5.4 U/gHb (Table 2 and Figure 3). The AMM calculated for each
191 setting varied substantially from 6.2 U/gHb in one study from Nepal to 9.9 U/gHb in a study in
192 Bangladesh [33, 34]. The setting-specific cutoffs for 30% G6PD activity ranged from 1.9 U/g Hb to 3.0
193 U/g Hb and the corresponding setting-specific 70% cutoffs varied from 4.3 U/gHb to 6.9 U/gHb (Table
194 2).
195 Using the manufacturer's cutoff of 4.0 U/gHb, 7.2% (699) of all participants in this analysis were
196 classified as deficient (72.8% (509) were males), but this decreased to 4.2% (411) when the universal
197 30% cutoff of 2.3 U/gHb was applied (Figure 3), and 3.9% (301) when the setting-specific 30% cutoffs
198 were applied (Table 2 and Figure 4). Using the manufacturer's cutoff of 6.0 U/gHb, 18.3% (1,777) of
199 participants were classified as having intermediate or deficient G6PD activity (<70%) and this
200 decreased to 11.9% (1,156) when the universal cutoff was applied and 10.8% (830) when the setting-
201 specific cutoffs were applied. Of the 1,078 patients with intermediate activity (>4.0-6.0 U/gHb) using
202 the manufacturer's cutoffs, 60.1% (648) were male. The distribution of G6PD activities varied
203 substantially between settings (Figure 4 and Tables 1-2).
204 Two settings sampled more than 10 individuals whose G6PD activity was measured from both capillary
205 and venous samples [33, 34]. After adjusting for age, sex, baseline Hb, and malaria status with
206 clustering by setting, there was no difference in mean G6PD activity between capillary or venous
207 sampling (mean difference: 0.28 U/gHb, 95% CI -1.27, 1.83).
208 Data were available from 6 settings on 5,064 participants with and without malaria [33, 34]. After
209 adjusting for confounders, there was no difference in mean G6PD activity between participants with
210 or without malaria (-0.64 U/gHb, 95% CI -1.91, 0.64). Similarly, removing parasitaemic participants did
211 not change the percentages of participants classified as having <30% or <70% G6PD activity
212 substantially (Table S2).
213 There was a non-linear association between age and G6PD activity and age and haemoglobin (Figure
214 S1). In an exploratory analysis, measured G6PD activity decreased sharply with increasing age in
215 children aged 1 to 5 years and plateaued thereafter, after adjusting for sex, baseline haemoglobin and
216 blood sampling method with clustering by setting (Figure 5). This relationship was apparent in

217 subgroups of male and female individuals. In sensitivity analyses, the age differences remained
218 apparent when restricted to males with a haemoglobin >10 g/dL and males with G6PD activity >4.0
219 U/g Hb.

220

221 **Discussion**

222 A reliable and accurate point-of-care diagnostic for G6PD activity is an important tool for the safe
223 prescription of 8-aminoquinoline antimalarial drugs in vivax-endemic countries. Our individual patient
224 data pooled meta-analysis of over 9,700 participants from 11 studies and eight countries
225 demonstrates substantial heterogeneity in the definition of 100% activity between settings. The
226 current manufacturer-recommended cutoffs to define deficient and intermediate G6PD activity are
227 conservative, placing a higher proportion of individuals in the intermediate or deficient category than
228 when applying locally calculated cutoffs. Definitions for 100% activity based on setting-specific AMMs
229 ranged from 6.2 U/gHb to 9.9 U/gHb between settings and this was reflected by significant variation
230 in the respective 30% and 70% cutoffs. A previous study demonstrated that, under ideal laboratory
231 conditions, with trained laboratory staff, the Biosensor performed comparably across different
232 settings [35]. The differences observed in our analysis could therefore be related to differences in user
233 proficiency or inherent differences between sites.

234 The universal definition of 100% activity in our pooled sample was 7.7 U/gHb according to the
235 Biosensor, and the corresponding cutoff for 30% activity (2.3 U/gHb) that was derived from this AMM
236 appeared to exclude a substantial proportion of presumed deficient males from the G6PD deficient
237 group based on the distribution of G6PD activities in the male population (Figure 3 and Figure 4). In
238 comparison, across all settings most male participants at the lower end of the G6PD activity
239 distributions were included in the deficient group using the manufacturer-recommended cutoff of 4.0
240 U/gHb (Figure 3 and Figure 4).

241 A cutoff at 30% activity defined based on spectrophotometry measurements captures the majority of
242 male deficient patients [15]. In contrast, the Biosensor manufacturer-recommended cutoff of 4.0
243 U/gHb corresponds to 52% activity as determined by the universal AMM. This difference suggests
244 there is an imperfect correlation between G6PD activity measured by spectrophotometry and G6PD
245 activity measured by Biosensor, such that the correlation is not 1:1. Most qualitative G6PD diagnostics
246 distinguish deficient and normal individuals at the 30% activity level, developed based on results from
247 spectrophotometry, and have effectively guided radical cure in males over several decades [36].
248 Additional investigation of the relationship between Biosensor and spectrophotometric G6PD activity
249 is warranted including assessment of haemolytic risks at various cutoffs to identify whether

250 adjustments to the manufacturer-recommended cutoff of 4.0 U/gHb to identify G6PD deficient
251 individuals is needed.

252 The manufacturer recommended cutoff of 6.0 U/gHb corresponds to 78% activity using the universal
253 AMM and thus places a higher proportion of participants in the category of intermediate activity.
254 Treatment with high dose primaquine radical cure (1 mg/kg/day for 7 days) potentially has a greater
255 risk of haemolysis in heterozygous females with intermediate activity [37, 38]. A recent clinical trial in
256 Bangladesh, Ethiopia and Indonesia provided this high dose primaquine radical cure regimen to
257 individuals with $\geq 70\%$ activity based on the local AMM. At one site the corresponding cut-off was 5
258 U/gHb, well below the manufacturer recommended 6.0 U/gHb cutoff for intermediate patients, with
259 no treatment-related serious adverse events observed, and no patients developing severe anaemia
260 (haemoglobin < 5 g/dL) [39]. This study and previous studies suggest that patients with activities below
261 6.0 U/gHb may tolerate high dose primaquine and the optimal cutoff to determine heterozygous
262 female patients at risk of severe haemolysis requires further investigation [40].

263 Neither the source of blood sampling nor malaria status impacted phenotypic G6PD activity, but G6PD
264 activity did vary with age. Measured G6PD activity decreased from ~ 11 U/gHb to ~ 8 U/gHb as age
265 increased from one to five years before plateauing thereafter. A decrease in G6PD activity over the
266 first 6 to 12 months of life had been described previously, however, to our knowledge, this has not
267 been observed in older children [41, 42]. This observation warrants further investigation since it may
268 relate to either a true variation in enzyme activity, other influential parameters such as haemoglobin
269 varying over age, or specific features associated with point of care testing with the Biosensor. If
270 confirmed, this will have important clinical relevance, including the potential for reduced susceptibility
271 to drug-induced haemolysis in young children and hence increased confidence in administering the
272 radical cure in children [43]. If this finding is specific for the Biosensor, it may require an age-based
273 adjustment in results in young children to ensure children are not falsely classified as G6PD normal.

274 Our study has several limitations. The proportion of individuals with G6PD deficiency is known to vary
275 substantially between and within countries [44]. Although data from nearly 10,000 individuals from
276 eight countries were included, the study population is not necessarily representative of all populations
277 in vivax endemic regions. Furthermore, setting-specific cutoffs may have been influenced by
278 differences in participant age as well as sample handling, though G6PD activity remains stable for at
279 least seven days if samples are stored between 4°C to 8°C [45, 46]. Data were not available on
280 pregnancy, recent surgery, recent blood loss, or recent blood transfusion, preventing any adjustment
281 for their effect on G6PD activity [8, 47, 48]. The pooled G6PD activity measurements did not have a
282 paired spectrophotometric reference measurement, preventing assessment of systematic bias in
283 specific settings. Due to the absence of a reference method, it was also not possible to compare the

284 performance of universal and manufacturer recommended cutoffs against a gold-standard method,
285 instead we had to rely on visual inspection of activity distributions.

286 In the absence of clinical data on haemolysis it was not possible to correlate Biosensor G6PD activity
287 with haemolytic risks, preventing an understanding of how different cutoffs would perform in a clinical
288 population undergoing 8-aminoquinoline therapy.

289 In conclusion, there was a substantial difference between the manufacturer-recommended cutoffs for
290 G6PD deficient and intermediate individuals and those derived using the current dataset based on
291 30% and 70% thresholds with the G6PD Standard definitions being more conservative. Further clinical
292 studies are needed to determine the relationship between spectrophotometry and Biosensor G6PD
293 activity measurements and the cutoffs that best predict the risk of drug-induced haemolysis.

294

295

296 **Acknowledgements**

297 We thank all participants and staff who were involved in these clinical trials at all the sites. This
298 research has been supported by the Australian Government through the Partnerships for a Healthy
299 Region (PHR) initiative. The views expressed in this publication are the author's alone and are not
300 necessarily the views of the Australian Government.

301

302

303 **Funding**

304 This work was supported by an NHMRC Ideas Grant (2028979), the content of this article does not
305 necessarily reflect the views of the NHMRC. RJC is supported by an Australian National Health and
306 Medical Research Council (NHMRC) Investigator Grants (1194702).

307

308 **Data sharing**

309 Study data can be obtained by request to the corresponding authors of the included studies.

310
311
312
313
314
315
316
317
318
319
320
321
322
323
324
325
326
327
328
329
330
331
332
333
334
335
336
337
338
339
340
341
342
343
344
345
346
347
348
349
350
351
352
353
354
355
356
357
358
359
360

REFERENCES

1. Battle KE, Lucas TCD, Nguyen M, Howes RE, Nandi AK, Twohig KA, et al. Mapping the global endemicity and clinical burden of *Plasmodium vivax*, 2000-17: a spatial and temporal modelling study. *Lancet*. 2019. Epub 2019/06/24. doi: 10.1016/S0140-6736(19)31096-7. PubMed PMID: 31229233.
2. Price RN, Commons RJ, Battle KE, Thriemer K, Mendis K. *Plasmodium vivax* in the Era of the Shrinking *P. falciparum* Map. *Trends Parasitol*. 2020;36(6):560-70. doi: 10.1016/j.pt.2020.03.009. PubMed PMID: 32407682; PubMed Central PMCID: PMC7297627.
3. Battle KE, Lucas TCD, Nguyen M, Howes RE, Nandi AK, Twohig KA, et al. Mapping the global endemicity and clinical burden of *Plasmodium vivax*, 2000-17: a spatial and temporal modelling study. *Lancet*. 2019;394(10195):332-43. doi: 10.1016/S0140-6736(19)31096-7. PubMed PMID: 31229233; PubMed Central PMCID: PMC6675736.
4. Dini S, Douglas NM, Poespoprodjo JR, Kenangalem E, Sugiarto P, Plumb ID, et al. The risk of morbidity and mortality following recurrent malaria in Papua, Indonesia: a retrospective cohort study. *BMC Med*. 2020;18(1):28. doi: 10.1186/s12916-020-1497-0. PubMed PMID: 32075649; PubMed Central PMCID: PMC7031957.
5. Kondrashin AV, Morozova LF, Stepanova EV, Turbabina NA, Maksimova MS, Morozov EN. On the epidemiology of *Plasmodium vivax* malaria: past and present with special reference to the former USSR. *Malaria journal*. 2018;17(1):346. Epub 2018/10/06. doi: 10.1186/s12936-018-2495-y. PubMed PMID: 30286752; PubMed Central PMCID: PMC6172834.
6. Phru CS, Kibria MG, Thriemer K, Chowdhury MU, Jahan N, Aktaruzzaman MM, et al. Case Report: A Case of Primaquine-Induced Hemoglobinuria in Glucose-6-Phosphate Dehydrogenase-Deficient Malaria Patient in Southeastern Bangladesh. *Am J Trop Med Hyg*. 2019. doi: 10.4269/ajtmh.19-0643. PubMed PMID: 31701865.
7. Chu CS, Hwang J. Tafenoquine: a toxicity overview. *Expert Opin Drug Saf*. 2021;20(3):349-62. Epub 2020/12/12. doi: 10.1080/14740338.2021.1859476. PubMed PMID: 33306921.
8. Luzzatto L, Ally M, Notaro R. Glucose-6-Phosphate Dehydrogenase Deficiency. *Blood*. 2020. doi: 10.1182/blood.2019000944. PubMed PMID: 32702756.
9. Beutler E. Glucose-6-phosphate dehydrogenase deficiency: a historical perspective. *Blood*. 2008;111(1):16-24. doi: 10.1182/blood-2007-04-077412. PubMed PMID: 18156501.
10. Alam M, Kibria M, Jahan N, Price R, Ley B. Spectrophotometry assays to determine G6PD activity from Trinity Biotech and Pointe Scientific G6PD show good correlation. *BMC Research Notes*. 2018;11(1):1-4.
11. Pfeffer D, Ley B, Howes R, Adu P, Alam M, Bansil P, et al. Quantification of glucose-6-phosphate dehydrogenase activity by spectrophotometry: A systematic review and meta-analysis. *PLoS Medicine*. 2020;17(5):1003084--1.
12. Domingo GJ, Satyagraha AW, Anvikar A, Baird K, Bancone G, Bansil P, et al. G6PD testing in support of treatment and elimination of malaria: recommendations for evaluation of G6PD tests. *Malar J*. 2013;12:391. Epub 2013/11/06. doi: 10.1186/1475-2875-12-391. PubMed PMID: 24188096; PubMed Central PMCID: PMC3830439.
13. Gomez-Manzo S, Marcial-Quino J, Vanoye-Carlo A, Serrano-Posada H, Ortega-Cuellar D, Gonzalez-Valdez A, et al. Glucose-6-Phosphate Dehydrogenase: Update and Analysis of New Mutations around the World. *Int J Mol Sci*. 2016;17(12). Epub 20161209. doi: 10.3390/ijms17122069. PubMed PMID: 27941691; PubMed Central PMCID: PMC65187869.
14. Nannelli C, Bosman A., Cunningham J., Dugue A.P., Luzzatto L. Genetics variants causing G6PD deficiency: biochemical and clinical data support new WHO classification. *British Journal of Haematology*. 2023;202(5):1024-32. Epub 06 July 2023.
15. Pfeffer DA, Satyagraha AW, Sadhewa A, Alam MS, Bancone G, Boum Y, et al. Genetic variants of glucose-6-phosphate dehydrogenase and their associated enzyme activity: a systematic review and meta-analysis. *Pathogens*. 2022;11(9):1045.

- 361 16. Ley B, Kibria M, Khan W, Auburn S, Phru C, Jahan N, et al. Wide range of G6PD activities
362 found among ethnic groups of the Chittagong Hill Tracts, Bangladesh. *PLOS Neglected Tropical*
363 *Diseases*. 2020;14(9):8697--1.
- 364 17. WHO. WHO Guidelines for malaria, 14 March 2023. In: Organization WH, editor. Geneva,
365 Switzerland2023.
- 366 18. Llanos-Cuentas A, Lacerda MVG, Hien TT, Velez ID, Namaik-Larp C, Chu CS, et al. Tafenoquine
367 versus Primaquine to Prevent Relapse of Plasmodium vivax Malaria. *N Engl J Med*. 2019;380(3):229-
368 41. Epub 2019/01/17. doi: 10.1056/NEJMoa1802537. PubMed PMID: 30650326.
- 369 19. Lacerda MVG, Llanos-Cuentas A, Krudsood S, Lon C, Saunders DL, Mohammed R, et al.
370 Single-Dose Tafenoquine to Prevent Relapse of Plasmodium vivax Malaria. *N Engl J Med*.
371 2019;380(3):215-28. Epub 2019/01/17. doi: 10.1056/NEJMoa1710775. PubMed PMID: 30650322;
372 PubMed Central PMCID: PMC6657226.
- 373 20. WHO Global Malaria Programme Malaria Policy Advisory Group. Meeting report of the
374 technical consultation to review the classification of glucose-6-phosphate dehydrogenase (G6PD).
375 Geneva, Switzerland: 2022 WHO/UCN/GMP/MPAG/2022.01.
- 376 21. Pfeffer DA, Satyagraha AW, Sadhewa A, Alam MS, Bancone G, Boum Y, et al. Genetic Variants
377 of Glucose-6-Phosphate Dehydrogenase and Their Associated Enzyme Activity: A Systematic Review
378 and Meta-Analysis. *Pathogens*. 2022;11(9). doi: 10.3390/pathogens11091045.
- 379 22. Sadhewa A, Cassidy-Seyoum S, Acharya S, Devine A, Price RN, Mwaura M, et al. A Review of
380 the Current Status of G6PD Deficiency Testing to Guide Radical Cure Treatment for Vivax Malaria.
381 *Pathogens*. 2023;12(5):650. PubMed PMID: doi:10.3390/pathogens12050650.
- 382 23. Adhikari B, Tripura R, Dysoley L, Peto TJ, Callery JJ, Heng C, et al. Glucose-6-Phosphate
383 Dehydrogenase (G6PD) Measurement Using Biosensors by Community-Based Village Malaria
384 Workers and Hospital Laboratory Staff in Cambodia: A Quantitative Study. *Pathogens*. 2023;12(3).
385 Epub 2023/03/30. doi: 10.3390/pathogens12030400. PubMed PMID: 36986323; PubMed Central
386 PMCID: PMC6657226.
- 387 24. Ley B, Winasti Satyagraha A, Kibria MG, Armstrong J, Bancone G, Bei AK, et al. Repeatability
388 and reproducibility of a handheld quantitative G6PD diagnostic. *PLoS Negl Trop Dis*.
389 2022;16(2):e0010174. Epub 2022/02/18. doi: 10.1371/journal.pntd.0010174. PubMed PMID:
390 35176015; PubMed Central PMCID: PMC6657226.
- 391 25. Martínez JC, Vélez-Marín V, Lopez-Perez M, Patiño-Lugo DF, Florez ID. Diagnostic accuracy of
392 the point-of-care standard G6PD test™ (SD Biosensor) for glucose-6-phosphate dehydrogenase
393 deficiency: a systematic review and meta-analysis. *Malar J*. 2024;23(1):327. Epub 20241102. doi:
394 10.1186/s12936-024-05144-1. PubMed PMID: 39488711; PubMed Central PMCID:
395 PMC6657226.
- 396 26. Adissu W, Brito M, Garbin E, Macedo M, Monteiro W, Mukherjee SK, et al. Clinical
397 performance validation of the STANDARD G6PD test: A multi-country pooled analysis. *PLoS Negl Trop*
398 *Dis*. 2023;17(10):e0011652. Epub 2023/10/12. doi: 10.1371/journal.pntd.0011652. PubMed PMID:
399 37824592; PubMed Central PMCID: PMC6657226.
- 400 27. Adhikari B, Tripura R, Dysoley L, Peto TJ, Callery JJ, Heng C, et al. Glucose-6-phosphate
401 dehydrogenase (G6PD) measurement using biosensors by community-based village malaria workers
402 and hospital laboratory staff in Cambodia: a quantitative study. *Pathogens*. 2023;12(3):400.
- 403 28. Whiting PF, Rutjes AW, Westwood ME, Mallett S, Deeks JJ, Reitsma JB, et al. QUADAS-2: a
404 revised tool for the quality assessment of diagnostic accuracy studies. *Annals of internal medicine*.
405 2011;155(8):529-36. Epub 2011/10/19. doi: 10.1059/0003-4819-155-8-201110180-00009. PubMed
406 PMID: 22007046.
- 407 29. Zobrist S, Brito M, Garbin E, Monteiro WM, Clementino Freitas S, Macedo M, et al.
408 Evaluation of a point-of-care diagnostic to identify glucose-6-phosphate dehydrogenase deficiency in
409 Brazil. *PLoS Negl Trop Dis*. 2021;15(8):e0009649. doi: 10.1371/journal.pntd.0009649. PubMed PMID:
410 34383774; PubMed Central PMCID: PMC6657226.

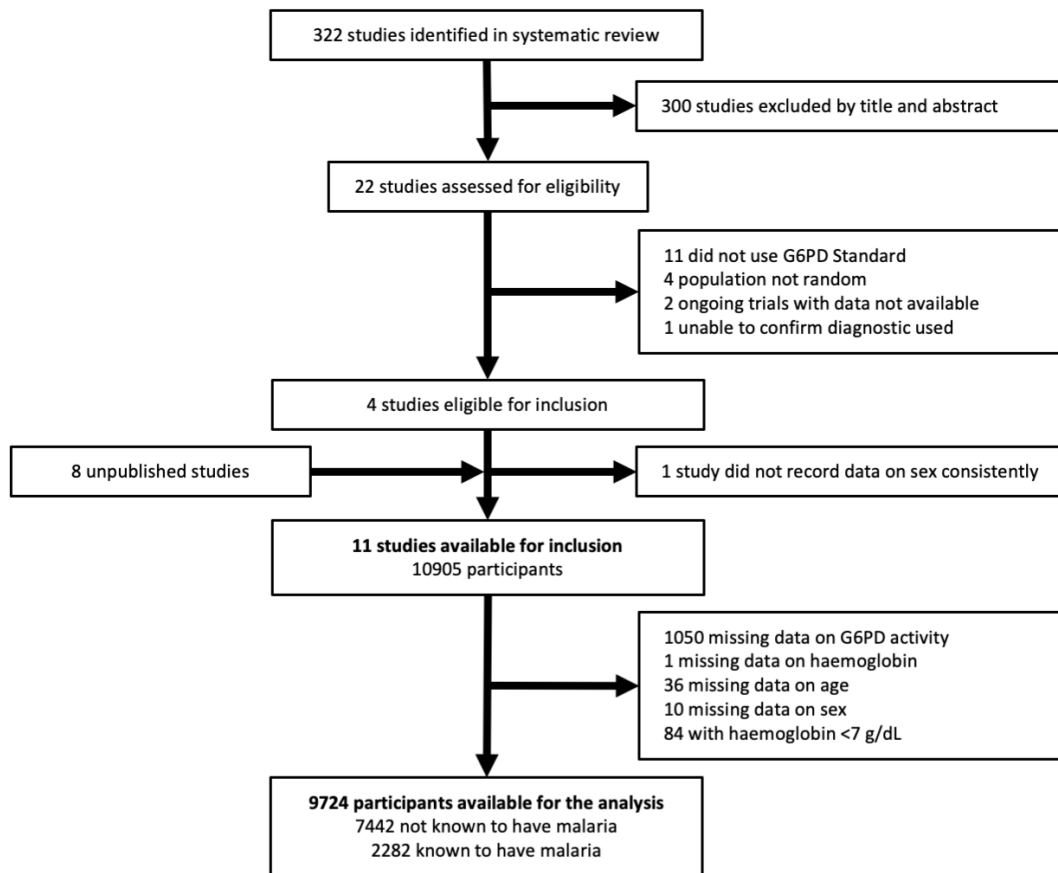
- 411 30. Pal S, Myburgh J, Bansil P, Hann A, Robertson L, Gerth-Guyette E, et al. Reference and point-
412 of-care testing for G6PD deficiency: Blood disorder interference, contrived specimens, and fingerstick
413 equivalence and precision. *PLoS One*. 2021;16(9):e0257560. doi: 10.1371/journal.pone.0257560.
414 PubMed PMID: 34543346; PubMed Central PMCID: PMC8452025.
- 415 31. Brito-Sousa JD, Murta F, Vitor-Silva S, Sampaio V, Mendes M, Souza B, et al. Quantitative
416 G6PD Deficiency Screening in Routine Malaria Diagnostic Units in the Brazilian Amazon (SAFEPRIM):
417 An Operational Mixed-Methods Study. *Pathogens*. 2022;11(11):1328. PubMed PMID:
418 doi:10.3390/pathogens11111328.
- 419 32. Adhikari B, Tripura R, Dysoley L, Callery JJ, Peto TJ, Heng C, et al. Glucose 6 Phosphate
420 Dehydrogenase (G6PD) quantitation using biosensors at the point of first contact: a mixed method
421 study in Cambodia. *Malaria Journal*. 2022;21(1):282.
- 422 33. Adissu W, Brito M, Garbin E, Macedo M, Monteiro W, Mukherjee SK, et al. Clinical
423 performance validation of the STANDARD G6PD test: A multi-country pooled analysis. *PLoS*
424 *Neglected Tropical Diseases*. 2023;17(10):e0011652.
- 425 34. Sadhewa A, Chaudhary A, Panggalo LV, Rumaseb A, Adhikari N, Adhikari S, et al. Field
426 assessment of the operating procedures of a semi-quantitative G6PD Biosensor to improve
427 repeatability of routine testing. *Plos one*. 2024;19(1):e0296708.
- 428 35. Ley B, Satyagraha AW, Kibria MG, Armstrong J, Bizij G, Bancone G, et al. The standard G6PD
429 test (SD biosensor) shows good repeatability and reproducibility in a multi-laboratory comparison.
430 *American Journal of Tropical Medicine and Hygiene*. 2021;105(5S).
- 431 36. Ley B, Luter N, Espino F, Devine A, Kalnoky M, Lubell Y, et al. The challenges of introducing
432 routine G6PD testing into radical cure: a workshop report. *Malaria journal*. 2015;14(1):377-.
- 433 37. Rajasekhar M, Simpson JA, Ley B, Edler P, Chu CS, Abreha T, et al. Primaquine dose and the
434 risk of haemolysis in patients with uncomplicated *Plasmodium vivax* malaria: a systematic review and
435 individual patient data meta-analysis. *Lancet Infect Dis*. 2024;24(2):184-95. Epub 20230922. doi:
436 10.1016/s1473-3099(23)00431-0. PubMed PMID: 37748497; PubMed Central PMCID:
437 PMC87615565.
- 438 38. Chu CS, Bancone G, Nosten F, White NJ, Luzzatto L. Primaquine-induced haemolysis in
439 females heterozygous for G6PD deficiency. *Malar J*. 2018;17(1):101. doi: 10.1186/s12936-018-2248-y.
440 PubMed PMID: 29499733.
- 441 39. Thriemer K, Degaga TS, Christian M, Alam MS, Rajasekhar M, Ley B, et al. Primaquine radical
442 cure in patients with *Plasmodium falciparum* malaria in areas co-endemic for *P falciparum* and
443 *Plasmodium vivax* (PRIMA): a multicentre, open-label, superiority randomised controlled trial. *The*
444 *Lancet*. 2023;402(10417):2101-10.
- 445 40. Taylor W, Thriemer K, Seidlein Lv, Yuentrakul P, Assawariyathipat T, ... Short-course
446 primaquine for the radical cure of *Plasmodium vivax* malaria: a multicentre, randomised, placebo-
447 controlled non-inferiority trial. *The Lancet*. 2019;394(10202):929-38.
- 448 41. Yang W-C, Tai S, Hsu C-L, Fu C-M, Chou A-K, Shao P-L, et al. Reference levels for glucose-6-
449 phosphate dehydrogenase enzyme activity in infants 7–90 days old in Taiwan. *Journal of the*
450 *Formosan Medical Association*. 2019. doi: <https://doi.org/10.1016/j.jfma.2019.03.010>.
- 451 42. Isaac I, Mainasara A, Erhabor O, Omojuyigbe S, Dallatu M, Bilbis L, et al. Glucose-6-
452 phosphate dehydrogenase deficiency among children attending the Emergency Paediatric Unit of
453 Usmanu Danfodiyo University Teaching Hospital, Sokoto, Nigeria. *Int J Gen Med*. 2013;6:557-62. Epub
454 20130709. doi: 10.2147/ijgm.S43757. PubMed PMID: 23874116; PubMed Central PMCID:
455 PMC3711754.
- 456 43. Pukrittayakamee S, Jittamala P, Watson JA, Hanboonkunupakarn B, Leungsinsiri P,
457 Poovorawan K, et al. Primaquine in glucose-6-phosphate dehydrogenase deficiency: an adaptive
458 pharmacometric assessment of ascending dose regimens in healthy volunteers. *Elife*. 2024;12. Epub
459 2024/02/06. doi: 10.7554/eLife.87318. PubMed PMID: 38319064; PubMed Central PMCID:
460 PMC810945527.

- 461 44. Howes RE, Piel FB, Patil AP, Nyangiri OA, Gething PW, Dewi M, et al. G6PD deficiency
462 prevalence and estimates of affected populations in malaria endemic countries: a geostatistical
463 model-based map. *PLoS medicine*. 2012;9(11):e1001339.
- 464 45. Alam M, Kibria M, Jahan N, Thriemer K, Hossain M, Douglas N, et al. Field evaluation of
465 quantitative point of care diagnostics to measure glucose-6-phosphate dehydrogenase activity. *PloS*
466 *one*. 2018;13(11):206331--1.
- 467 46. Kahn M, Ward WH, LaRue N, Kalnoky M, Pal S, Domingo GJ. Maintaining Specimen Integrity
468 for G6PD Screening by Cytofluorometric Assays. *J Histochem Cytochem*. 2015;63(6):454-8. doi:
469 10.1369/0022155415580594. PubMed PMID: 25786434; PubMed Central PMCID: PMC4442822.
- 470 47. Ley B, Bancone G, Seidlein LV, Thriemer K, Richards J, Domingo G, et al. Methods for the field
471 evaluation of quantitative G6PD diagnostics: a review. *Malaria journal*. 2017;16(1):1-9.
- 472 48. Ley B, Alam MS, Kibria MG, Marfurt J, Phru CS, Ami JQ, et al. Glucose-6-phosphate
473 dehydrogenase activity in individuals with and without malaria: Analysis of clinical trial, cross-
474 sectional and case-control data from Bangladesh. *PLOS Medicine*. 2021;18(4):e1003576. doi:
475 10.1371/journal.pmed.1003576.

476

477 **Figure 2. Flow diagram of patient inclusion**

478



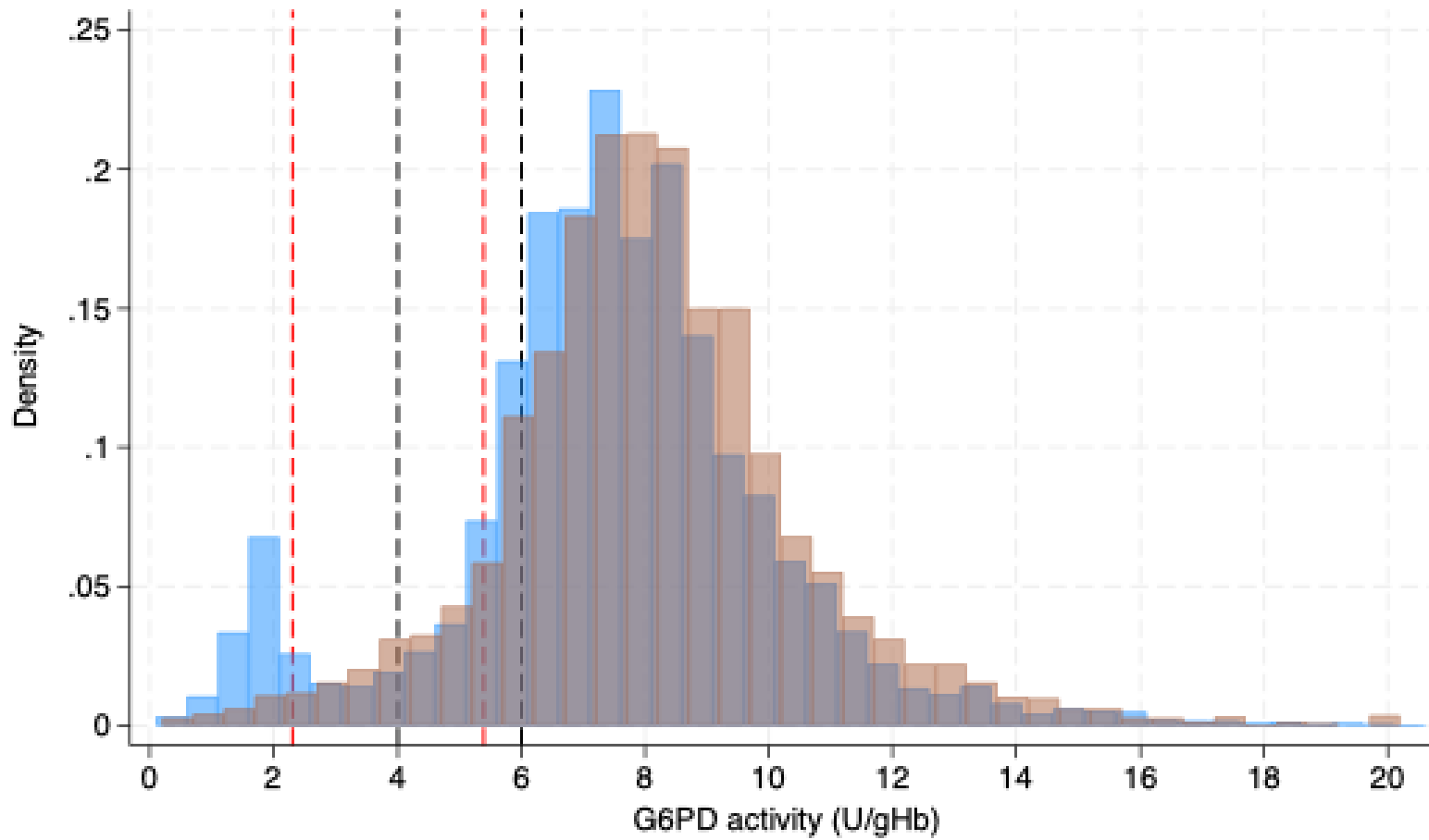
479

480 **Table 1. Demographics and baseline measures by setting**

Country	Study	Participants	Age	Sex		Malaria present		Blood sampling method		Haemoglobin (g/dL)
				Male	Female	No or unknown	Yes	Venous	Capillary	
Overall		9,724	30.0 (21.0-43.0)	5,487 (56.4%)	4,237 (43.6%)	7,442 (76.5%)	2,282 (23.5%)	786 (8.1%)	8,938 (91.9%)	13.5 (12.0-15.0)
Bangladesh	ACROSS 2019 [33]	468	35.0 (15.0-45.0)	269 (57.5%)	199 (42.5%)	468 (100.0%)	0 (0.0%)	468 (100.0%)	0 (0.0%)	14.4 (13.0-15.8)
Brazil	Brito-Sousa 2022 [31]	1,097	23.0 (12.0-39.0)	674 (61.4%)	423 (38.6%)	0 (0.0%)	1,097 (100.0%)	0 (0.0%)	1,097 (100.0%)	12.9 (11.3-14.4)
	PATH 2019 [33]	1,730	37.0 (27.0-47.0)	785 (45.4%)	945 (54.6%)	1,480 (85.5%)	250 (14.5%)	8 (0.5%)	1,722 (99.5%)	13.2 (12.0-14.5)
Cambodia	Adhikari 2022 [32]	1,327	31.0 (23.0-42.0)	993 (74.8%)	334 (25.2%)	1,259 (94.9%)	68 (5.1%)	0 (0.0%)	1,327 (100.0%)	14.0 (12.4-15.7)
	EFFORT 2023	282	26.0 (21.0-35.0)	251 (89.0%)	31 (11.0%)	5 (1.8%)	277 (98.2%)	0 (0.0%)	282 (100.0%)	14.6 (13.3-15.7)
Ethiopia	EFFORT 2023	373	23.0 (19.0-30.0)	211 (56.6%)	162 (43.4%)	0 (0.0%)	373 (100.0%)	0 (0.0%)	373 (100.0%)	14.0 (12.5-15.5)
	PATH 2019 [33]	1,013	24.0 (21.0-31.0)	538 (53.1%)	475 (46.9%)	1,013 (100.0%)	0 (0.0%)	0 (0.0%)	1,013 (100.0%)	14.6 (13.2-16.2)
Indonesia	ACROSS 2018	752	31.0 (11.0-47.5)	310 (41.2%)	442 (58.8%)	743 (98.8%)	9 (1.2%)	0 (0.0%)	752 (100.0%)	13.5 (12.4-14.9)
	EFFORT 2023	195	28.0 (19.0-40.0)	134 (68.7%)	61 (31.3%)	6 (3.1%)	189 (96.9%)	0 (0.0%)	195 (100.0%)	14.1 (12.6-15.4)
	Sadhewa 2024 [34]	59	35.0 (29.0-42.0)	14 (23.7%)	45 (76.3%)	59 (100.0%)	0 (0.0%)	0 (0.0%)	59 (100.0%)	16.0 (14.6-17.1)
India	ACROSS 2020 [33]	778	33.0 (20.0-47.0)	359 (46.1%)	419 (53.9%)	759 (97.6%)	19 (2.4%)	250 (32.1%)	528 (67.9%)	13.2 (11.7-14.8)
	PATH 2020 [33]	909	35.0 (23.0-50.0)	585 (64.4%)	324 (35.6%)	909 (100.0%)	0 (0.0%)	0 (0.0%)	909 (100.0%)	12.3 (10.8-13.8)
Nepal	Sadhewa 2024 [34]	120	32.0 (21.0-50.0)	51 (42.5%)	69 (57.5%)	120 (100.0%)	0 (0.0%)	60 (50.0%)	60 (50.0%)	14.2 (13.1-16.2)
USA	Pal 2021 [30]	621	34.0 (26.0-48.0)	313 (50.4%)	308 (49.6%)	621 (100.0%)	0 (0.0%)	0 (0.0%)	621 (100.0%)	12.4 (11.4-13.7)

481 IQR – interquartile range

482 Figure 3. Density of G6PD activity by sex



483
484

485 Blue bars correspond to males. Orange bars correspond to females. Red dotted lines correspond to 30% and 70% activity of the universal AMM. Black dotted
486 lines correspond to the manufacturer recommended cutoff of 4.0 U/gHb and 6.0 U/gHb.

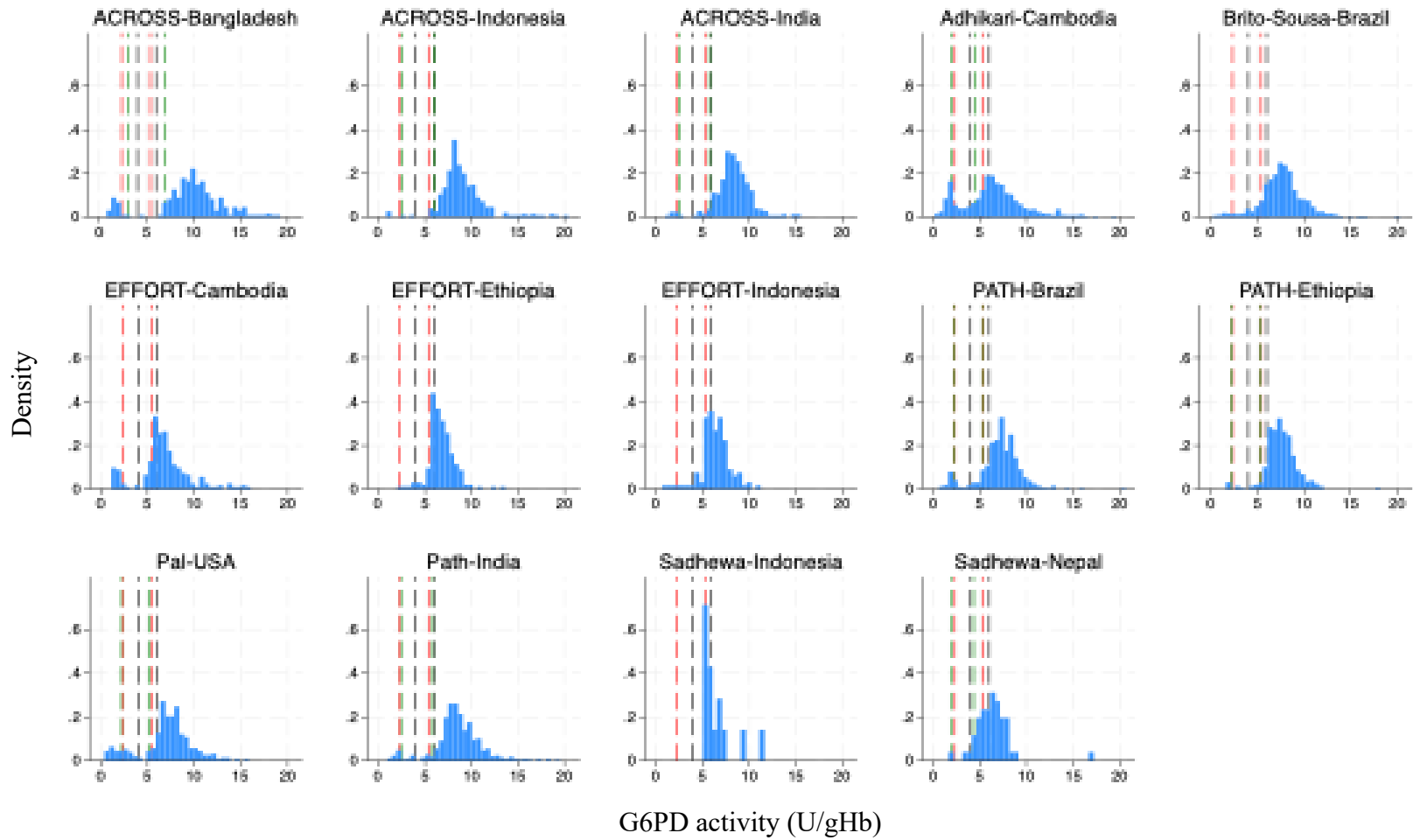
487 **Table 2. Adjusted male medians and cutoffs by setting**

Country	Study	Participants	100% AMM, U/gHb	30% AMM, U/gHb	Percentage (n) identified as <30% cutoff by:			70% AMM, U/gHb	Percentage identified as <70% cutoff by:		
					Manufacturer (n)	Universal (n)	Setting (n)		Manufacturer (n)	Universal (n)	Setting (n)
Overall		9,724	7.7	2.3	7.2% (699)	4.2% (411)	3.9% (301)	5.4	18.3% (1,777)	11.9% (1,156)	10.8% (830)
Bangladesh	ACROSS 2019 [33]	468	9.9	3.0	7.7% (36)	6.0% (28)	7.1% (33)	6.9	9.6% (45)	8.8% (41)	11.5% (54)
Brazil	Brito-Sousa 2022 [31]	1,097	-	-	5.9% (65)	2.6% (29)	-	-	19.1% (209)	11.9% (130)	-
	PATH 2019 [33]	1,730	7.5	2.3	5.5% (95)	3.3% (57)	3.1% (53)	5.3	15.5% (268)	9.9% (171)	9.3% (161)
Cambodia	Adhikari 2022 [32]	1,327	6.4	1.9	21.5% (285)	13.3% (176)	9.9% (132)	4.5	44.1% (585)	33.8% (449)	24.8% (329)
	EFFORT 2023	282	-	-	11.3% (32)	10.3% (29)	-	-	33.7% (95)	16.7% (47)	-
Ethiopia	EFFORT 2023	373	-	-	2.1% (8)	0.3% (1)	-	-	25.2% (94)	5.1% (19)	-
	PATH 2019 [33]	1,013	7.5	2.3	1.9% (19)	0.8% (8)	0.8% (8)	5.3	7.9% (80)	3.7% (37)	3.7% (37)
Indonesia	ACROSS 2018	752	8.6	2.6	2.0% (15)	0.9% (7)	0.9% (7)	6.0	3.9% (29)	2.3% (17)	3.9% (29)
	EFFORT 2023	195	-	-	4.6% (9)	2.1% (4)	-	-	30.8% (60)	9.2% (18)	-
	Sadhewa 2024 [34]	59	-	-	1.7% (1)	1.7% (1)	-	-	28.8% (17)	8.5% (5)	-
India	ACROSS 2020 [33]	778	8.3	2.5	2.3% (18)	1.3% (10)	1.3% (10)	5.8	7.1% (55)	4.9% (38)	6.6% (51)
	PATH 2020 [33]	909	8.3	2.5	5.1% (46)	2.9% (26)	2.9% (26)	5.8	8.6% (78)	6.7% (61)	7.9% (72)
Nepal	Sadhewa 2024 [34]	120	6.2	1.9	7.5% (9)	1.7% (2)	0.8% (1)	4.3	34.2% (41)	25.8% (31)	10.0% (12)
USA	Pal 2021 [30]	621	7.3	2.2	9.8% (61)	5.3% (33)	5.0% (31)	5.1	19.5% (121)	14.8% (92)	13.7% (85)

488 AMM – adjusted male median; An AMM was not calculated for Sadhewa et al in Indonesia [34] due to too few male participants. An AMM was not
489 calculated for EFFORT in Cambodia, Ethiopia and Indonesia, and Brito-Sousa et al in Brazil [31] as included participants were predominantly parasitaemic.
490

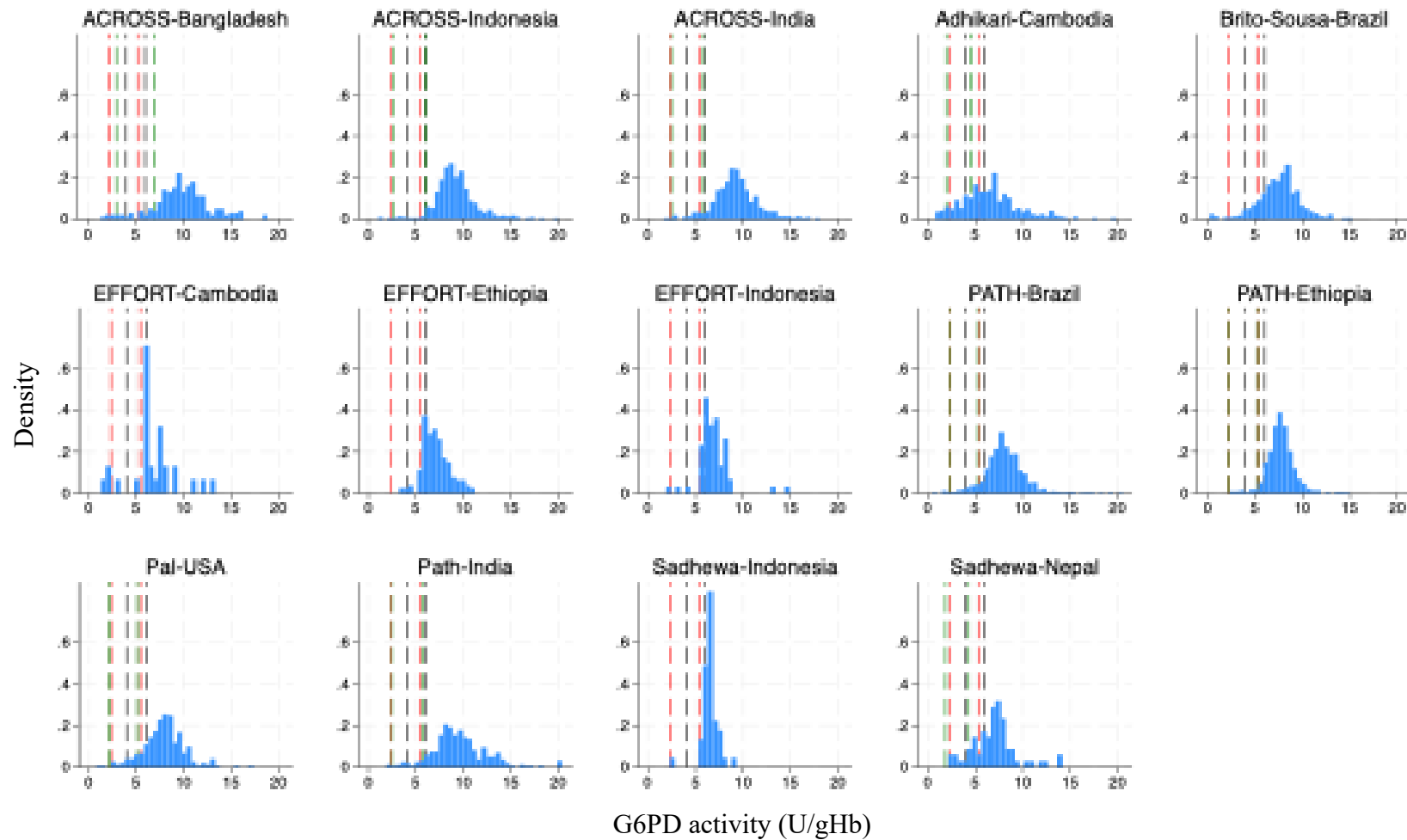
491 Figure 4. Density of G6PD activity in A) males and B) females by setting

492 A)



493
494
495
496
497
498

499 B)



500

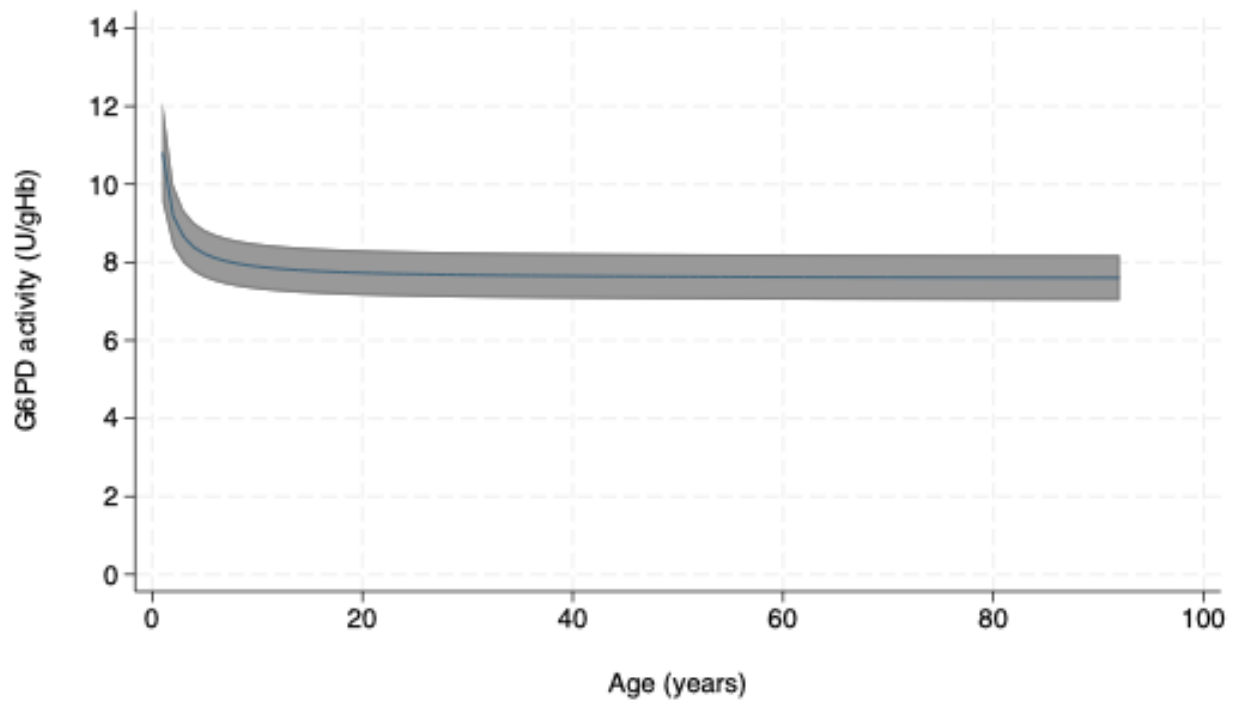
501

502 Red dotted lines correspond to 30% and 70% activity of the universal AMM. Black dotted lines correspond to the manufacturer recommended

503 cutoff of 4.0 U/gHb and 6.0 U/gHb. Green dotted lines correspond to 30% and 70% activity of the setting-specific AMM. Setting-specific AMMs

504 were not available for EFFORT in Cambodia, Ethiopia and Indonesia, Sadhewa et al in Indonesia [34] and Brito-Sousa et al in Brazil [31].

505 **Figure 5. Relationship between age and G6PD activity in all individuals**



506
507 Based on a generalised estimating equation model with fractional polynomial terms for age, adjusted for
508 sex, haemoglobin and blood sampling method with clustering by setting after exclusion of participants with
509 haemoglobin <7 g/dL or >20 g/dL.
510

Checklist S1. PRISMA-IPD Checklist of items to include when reporting a systematic review and meta-analysis of individual participant data (IPD)

PRISMA-IPD Section/topic	Item No	Checklist item	Reported on page
Title			
Title	1	Identify the report as a systematic review and meta-analysis of individual participant data.	1
Abstract			
Structured summary	2	Provide a structured summary including as applicable:	2
		Background: state research question and main objectives, with information on participants, interventions, comparators and outcomes.	
		Methods: report eligibility criteria; data sources including dates of last bibliographic search or elicitation, noting that IPD were sought; methods of assessing risk of bias.	
		Results: provide number and type of studies and participants identified and number (%) obtained; summary effect estimates for main outcomes (benefits and harms) with confidence intervals and measures of statistical heterogeneity. Describe the direction and size of summary effects in terms meaningful to those who would put findings into practice.	
		Discussion: state main strengths and limitations of the evidence, general interpretation of the results and any important implications.	
Other: report primary funding source, registration number and registry name for the systematic review and IPD meta-analysis.			
Introduction			
Rationale	3	Describe the rationale for the review in the context of what is already known.	3-4
Objectives	4	Provide an explicit statement of the questions being addressed with reference, as applicable, to participants, interventions, comparisons, outcomes and study design (PICOS). Include any hypotheses that relate to particular types of participant-level subgroups.	4
Methods			
Protocol and registration	5	Indicate if a protocol exists and where it can be accessed. If available, provide registration information including registration number and registry name. Provide publication details, if applicable.	5
Eligibility criteria	6	Specify inclusion and exclusion criteria including those relating to participants, interventions, comparisons, outcomes, study design and characteristics (e.g. years when conducted, required minimum follow-up). Note whether these were applied at the study or individual level i.e. whether eligible participants were included (and ineligible participants excluded) from a study that included a wider population than specified by the review inclusion criteria. The rationale for criteria should be stated.	5
Identifying studies -	7	Describe all methods of identifying published and unpublished studies including, as applicable: which bibliographic databases were searched with dates of coverage; details of any hand searching including of conference proceedings; use of study registers	5

information sources		and agency or company databases; contact with the original research team and experts in the field; open adverts and surveys. Give the date of last search or elicitation.	
Identifying studies - search	8	Present the full electronic search strategy for at least one database, including any limits used, such that it could be repeated.	5
Study selection processes	9	State the process for determining which studies were eligible for inclusion.	5
Data collection processes	10	Describe how IPD were requested, collected and managed, including any processes for querying and confirming data with investigators. If IPD were not sought from any eligible study, the reason for this should be stated (for each such study). If applicable, describe how any studies for which IPD were not available were dealt with. This should include whether, how and what aggregate data were sought or extracted from study reports and publications (such as extracting data independently in duplicate) and any processes for obtaining and confirming these data with investigators.	5
Data items	11	Describe how the information and variables to be collected were chosen. List and define all study level and participant level data that were sought, including baseline and follow-up information. If applicable, describe methods of standardising or translating variables within the IPD datasets to ensure common scales or measurements across studies.	5
IPD integrity	A1	Describe what aspects of IPD were subject to data checking (such as sequence generation, data consistency and completeness, baseline imbalance) and how this was done.	5
Risk of bias assessment in individual studies.	12	Describe methods used to assess risk of bias in the individual studies and whether this was applied separately for each outcome. If applicable, describe how findings of IPD checking were used to inform the assessment. Report if and how risk of bias assessment was used in any data synthesis.	6
Specification of outcomes and effect measures	13	State all treatment comparisons of interests. State all outcomes addressed and define them in detail. State whether they were pre-specified for the review and, if applicable, whether they were primary/main or secondary/additional outcomes. Give the principal measures of effect (such as risk ratio, hazard ratio, difference in means) used for each outcome.	6
Synthesis methods	14	Describe the meta-analysis methods used to synthesise IPD. Specify any statistical methods and models used. Issues should include (but are not restricted to): <ul style="list-style-type: none"> • Use of a one-stage or two-stage approach. • How effect estimates were generated separately within each study and combined across studies (where applicable). • Specification of one-stage models (where applicable) including how clustering of patients within studies was accounted for. • Use of fixed or random effects models and any other model assumptions, such as proportional hazards. • How (summary) survival curves were generated (where applicable). • Methods for quantifying statistical heterogeneity (such as I^2 and t^2). • How studies providing IPD and not providing IPD were analysed together (where applicable). 	6

		<ul style="list-style-type: none"> How missing data within the IPD were dealt with (where applicable). 	
Exploration of variation in effects	A2	If applicable, describe any methods used to explore variation in effects by study or participant level characteristics (such as estimation of interactions between effect and covariates). State all participant-level characteristics that were analysed as potential effect modifiers, and whether these were pre-specified.	6
Risk of bias across studies	15	Specify any assessment of risk of bias relating to the accumulated body of evidence, including any pertaining to not obtaining IPD for particular studies, outcomes or other variables.	N/A
Additional analyses	16	Describe methods of any additional analyses, including sensitivity analyses. State which of these were pre-specified.	6
Results			
Study selection and IPD obtained	17	Give numbers of studies screened, assessed for eligibility, and included in the systematic review with reasons for exclusions at each stage. Indicate the number of studies and participants for which IPD were sought and for which IPD were obtained. For those studies where IPD were not available, give the numbers of studies and participants for which aggregate data were available. Report reasons for non-availability of IPD. Include a flow diagram.	6, Figure 1
Study characteristics	18	For each study, present information on key study and participant characteristics (such as description of interventions, numbers of participants, demographic data, unavailability of outcomes, funding source, and if applicable duration of follow-up). Provide (main) citations for each study. Where applicable, also report similar study characteristics for any studies not providing IPD.	Table 1
IPD integrity	A3	Report any important issues identified in checking IPD or state that there were none.	Nil
Risk of bias within studies	19	Present data on risk of bias assessments. If applicable, describe whether data checking led to the up-weighting or down-weighting of these assessments. Consider how any potential bias impacts on the robustness of meta-analysis conclusions.	Table S1
Results of individual studies	20	For each comparison and for each main outcome (benefit or harm), for each individual study report the number of eligible participants for which data were obtained and show simple summary data for each intervention group (including, where applicable, the number of events), effect estimates and confidence intervals. These may be tabulated or included on a forest plot.	7
Results of syntheses	21	Present summary effects for each meta-analysis undertaken, including confidence intervals and measures of statistical heterogeneity. State whether the analysis was pre-specified, and report the numbers of studies and participants and, where applicable, the number of events on which it is based.	7
		When exploring variation in effects due to patient or study characteristics, present summary interaction estimates for each characteristic examined, including confidence intervals and measures of statistical heterogeneity. State whether the analysis was pre-specified. State whether any interaction is consistent across trials.	
		Provide a description of the direction and size of effect in terms meaningful to those who would put findings into practice.	

Risk of bias across studies	22	Present results of any assessment of risk of bias relating to the accumulated body of evidence, including any pertaining to the availability and representativeness of available studies, outcomes or other variables.	N/A
Additional analyses	23	Give results of any additional analyses (e.g. sensitivity analyses). If applicable, this should also include any analyses that incorporate aggregate data for studies that do not have IPD. If applicable, summarise the main meta-analysis results following the inclusion or exclusion of studies for which IPD were not available.	7-8
Discussion			
Summary of evidence	24	Summarise the main findings, including the strength of evidence for each main outcome.	8-10
Strengths and limitations	25	Discuss any important strengths and limitations of the evidence including the benefits of access to IPD and any limitations arising from IPD that were not available.	8-10
Conclusions	26	Provide a general interpretation of the findings in the context of other evidence.	8-10
Implications	A4	Consider relevance to key groups (such as policy makers, service providers and service users). Consider implications for future research.	9-10
Funding			
Funding	27	Describe sources of funding and other support (such as supply of IPD), and the role in the systematic review of those providing such support.	10

© Reproduced with permission of the PRISMA IPD Group, which encourages sharing and reuse for non-commercial purposes

1 **Table S1. QUADAS analysis**

2 **Table S2. Percentage of participants identified by cutoffs by setting after exclusion of participants with malaria**

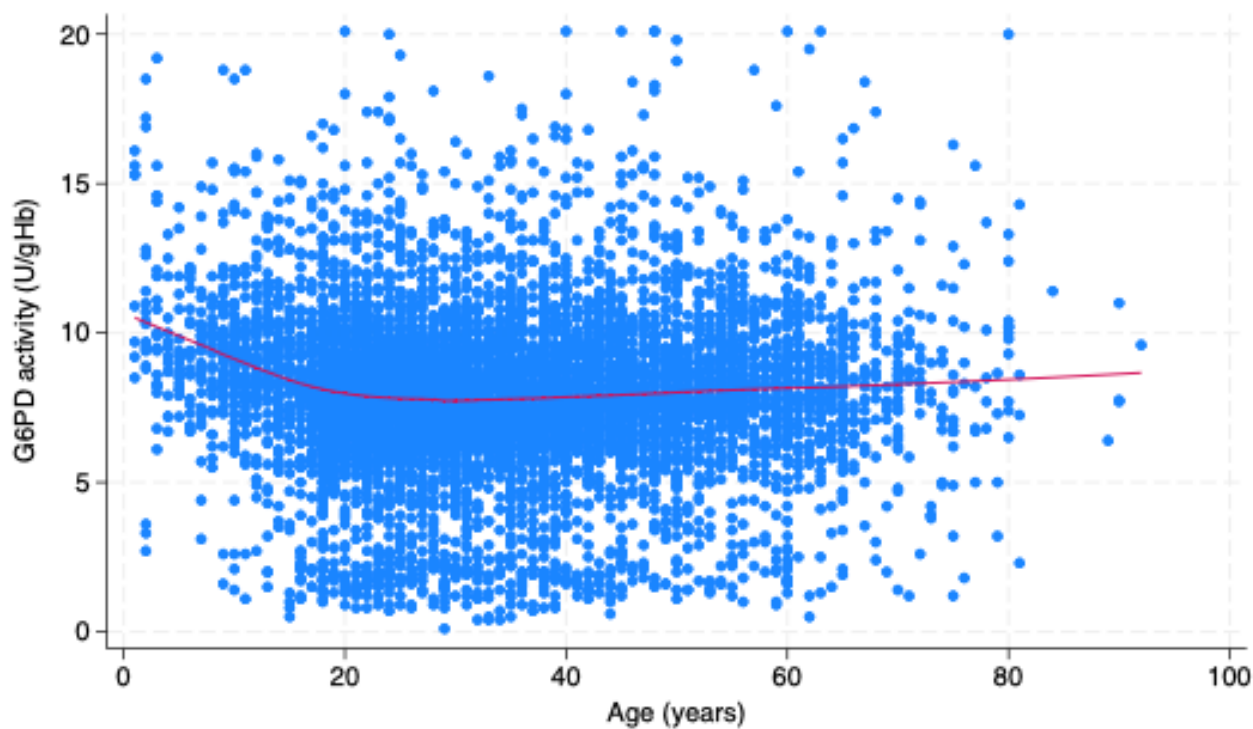
3

Country	Study	Participants	Percentage (n) identified as <30% cutoff by:			Percentage (n) identified as <70% cutoff by:		
			Manufacturer (n)	Universal (n)	Setting (n)	Manufacturer (n)	Universal (n)	Setting (n)
Overall		N=7,442	7.5% (557)	4.4% (329)	3.8% (281)	16.6% (1,232)	11.9% (888)	10.6% (782)
Bangladesh	ACROSS 2019 [33]	N=468	7.7% (36)	6.0% (28)	7.1% (33)	9.6% (45)	8.8% (41)	11.5% (54)
Brazil	PATH 2019 [33]	N=1,480	5.3% (79)	3.1% (46)	2.8% (42)	13.9% (206)	9.2% (136)	8.6% (128)
Cambodia	Adhikari 2022 [32]	N=1,259	21.6% (272)	13.3% (167)	9.8% (124)	44.2% (556)	34.0% (428)	25.0% (315)
	EFFORT 2023	N=5	40.0% (2)	40.0% (2)	-	40.0% (2)	40.0% (2)	-
Ethiopia	PATH 2019 [33]	N=1,013	1.9% (19)	0.8% (8)	0.8% (8)	7.9% (80)	3.7% (37)	3.7% (37)
Indonesia	ACROSS 2018	N=743	2.0% (15)	0.9% (7)	0.9% (7)	3.9% (29)	2.3% (17)	3.9% (29)
	EFFORT 2023	N=6	0.0% (0)	0.0% (0)	-	50.0% (3)	16.7% (1)	-
	Sadhewa 2024 [34]	N=59	1.7% (1)	1.7% (1)	-	28.8% (17)	8.5% (5)	-
India	ACROSS 2020 [33]	N=759	2.2% (17)	1.2% (9)	1.2% (9)	7.1% (54)	4.9% (37)	6.6% (50)
	PATH 2020 [33]	N=909	5.1% (46)	2.9% (26)	2.9% (26)	8.6% (78)	6.7% (61)	7.9% (72)
Nepal	Sadhewa 2024 [34]	N=120	7.5% (9)	1.7% (2)	0.8% (1)	34.2% (41)	25.8% (31)	10.0% (12)
USA	Pal 2021 [30]	N=621	9.8% (61)	5.3% (33)	5.0% (31)	19.5% (121)	14.8% (92)	13.7% (85)

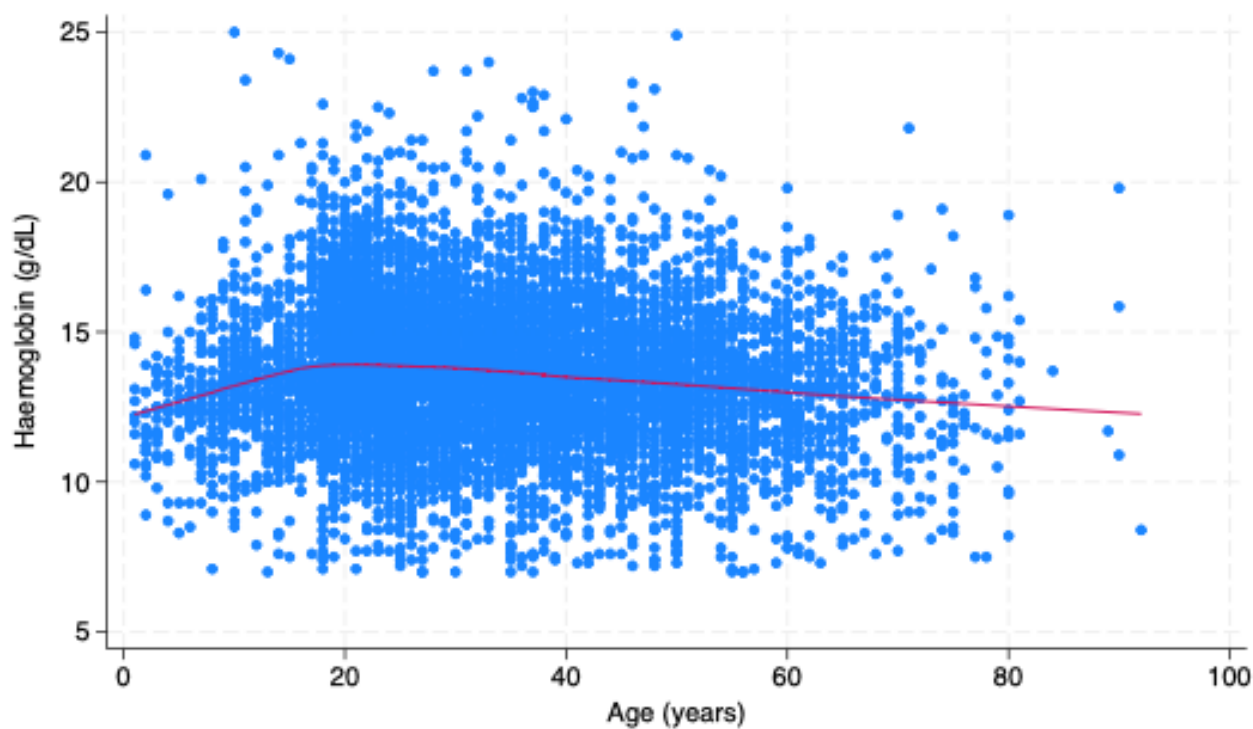
4 A setting specific cutoff was not available for EFFORT in Cambodia and Indonesia and Sadhewa et al in Indonesia [34] due to too few male patients to
 5 estimate an adjusted male median.

6

7 **Figure S1. Scatter plot of A) G6PD activity (U/gHb) versus age and B) haemoglobin (g/dL) versus age**
8 **A)**



9
10 **B)**



11
12 A loess curve using Cleveland's tricube weighting function with a bandwidth of 0.8 is fitted to both figures.
13 Red line = smoothed trend