

1 **Association between surgical aortic valve replacement and long-term outcomes in 50 to**
2 **65-year-olds: Results of the AUTHEARTVISIT study**

3 A. Florian¹, J. Auer², B. Reichardt³, P. Krotka⁴, C. Wagenlechner⁴, R. Wendt⁵, M. Mildner⁶, J.
4 Mascherbauer^{7,8}, HJ Ankersmit^{9,10*#}, D. Zimpfer^{1*#}, A. Graf^{4#}

5

6 1 Department of Cardiac Surgery, Medical University of Vienna, Austria

7 2 Department of Internal Medicine I with Cardiology and Intensive Care, St. Josef Hospital

8 Braunau, Braunau am Inn, Austria

9 3 Austrian Social Health Insurance Fund, Eisenstadt, Austria

10 4 Center for Medical Data Science, Medical University of Vienna, Austria

11 5 Department of Nephrology, St. Georg Hospital, Leipzig, Germany

12 6 Department of Dermatology, Medical University of Vienna, Austria

13 7 Department of Internal Medicine 3, University Hospital St. Poelten, St. Poelten, Austria

14 8 Karl Landsteiner University of Health Sciences, Krems an der Donau, Austria

15 9 Department of Thoracic Surgery, Medical University of Vienna, Austria

16 10 Laboratory for Cardiac and Thoracic Diagnosis, Regeneration and Applied Immunology,

17 Austria

18 # H. J. Ankersmit, D. Zimpfer and A. Graf contributed equally to this work

19 * corresponding authors

20 Univ. Prof. PD Daniel Zimpfer, MBA

21 Department of Cardiac Surgery

22 Medical University of Vienna

23 Währinger Gürtel 18-20

24 1090 Vienna

1 Tel. 0043-1-40400- 69660

2 email: daniel.zimpfer@meduniwien.ac.at

3

4 Univ. Prof. Hendrik Jan Ankersmit

5 Department of Thoracic Surgery

6 Medical University of Vienna

7 Währinger Gürtel 18-20

8 1090 Vienna

9 Tel. 0043-1-40400-67770

10 email: hendrik.ankersmit@meduniwien.ac.at

11 www.applied-immunology.at

12

13 **Abbreviations:**

14 AVR = aortic valve replacement

15 CMP = cardiomyopathy

16 ICH = intracerebral hemorrhage

17 MACE = major adverse cardiac event

18 PSM = propensity score matching

19 sAVR = surgical aortic valve replacement

20 sB-AVR = biological aortic valve replacement

21 sM-AVR = mechanical aortic valve replacement

22 SVD = structural valve degeneration

23 TAVI = transcatheter aortic valve implantation

24 Word count: 4422 excluding abstract and references

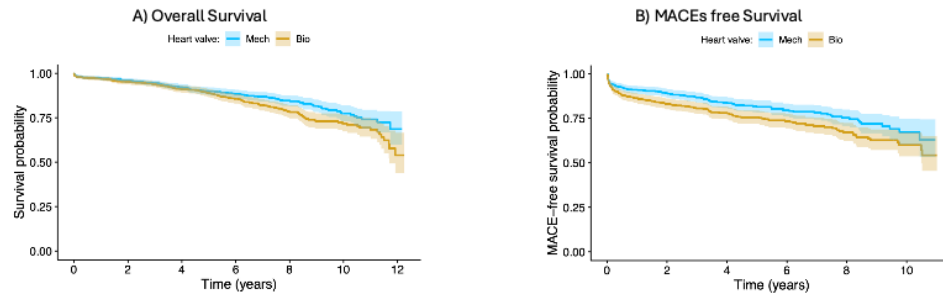
1 Graphical Abstract

2

Association between surgical aortic valve replacement and long-term outcomes in 50 to 65-year-olds: Results of the AUTHEARTVISIT study

Summary

Results after aortic valve replacement was compared in patients between 50 and 65 years between mechanical and biological prostheses. After sB-AVR we observed a significantly higher risk for all-cause death (HR: 1.400; 95% CI: 1.103 - 1.778, p=0.006, A), MACEs (HR: 1.224; 95% CI: 1.020 - 1.469, p=0.029, B) and reoperation (HR: 2.451; 95% CI: 1.330 - 4.516, p=0.004) compared to sM-AVR before and after propensity score matching. Risk of bleeding and stroke did not differ between the groups.



Legend: HR = hazard ratio, CI = confidence interval

3

4

5

1 **Abstract**

2 **Objectives:** During the last years, age recommendations for the use of biological prostheses
3 rather than mechanical prostheses for surgical aortic valve replacement (sAVR) have been
4 lowered considerably. We evaluated survival rates, major adverse cardiac events (MACEs),
5 and reoperation risks after surgical (sM-AVR) and biological (sB-AVR) AVR, to provide data
6 for the optimal prosthesis choice for middle aged patients between 50 and 65 years.

7 **Methods:** We performed a population-based cohort study using Austrian Health System
8 data from 2010–2020. Patients undergoing isolated sAVR (n=3761) were categorized into
9 sM-AVR (n=1018) and sB-AVR (n=2743) groups. Propensity score matching (PSM) was
10 applied to balance covariates. The primary endpoint was all-cause mortality. Secondary
11 endpoints included MACEs, reoperation, stroke, bleeding, and survival post-reoperation.
12 Outcomes were assessed using Cox regression and Kaplan-Meier analyses.

13 **Results:** Patients undergoing sM-AVR had significantly lower all-cause mortality compared to
14 sB-AVR (HR=1.352, p=0.003). sB-AVR was associated with higher risks of MACEs (HR=1.182,
15 p=0.03) and reoperation (HR=2.338, p=0.002). Stroke and bleeding rates were comparable.
16 All results were sustained after PSM.

17 **Conclusion:** The findings highlight increased mortality, MACEs and reoperation risks
18 associated with sB-AVR compared to sM-AVR. We observed superior long-term outcomes
19 after sM-AVR, suggesting the need to reevaluate the expanding use of sB-AVR in younger
20 patients.

21

1 **Introduction**

2 Valvular heart disease is a leading global cause of cardiovascular morbidity and mortality
3 with aortic valve disease accounting for approximately 61% of deaths from valvular heart
4 disease. The prevalence of aortic valve stenosis varies by age, starting from 0.2% in 50 to 59-
5 year-olds and reaching 9.8% in 80 to 89-year-olds (1,2). The standard treatment for severe
6 aortic valve disease is aortic valve replacement (AVR) using biological and mechanical
7 prostheses, homografts or autografts (3).

8 European Society of Cardiology (ESC) guidelines recommend mechanical prostheses for
9 patients aged ≤ 60 years and biological prostheses for those ≥ 65 years. For patients aged 60-
10 65, decisions depend on patient preferences and clinical factors (4). American Heart
11 Association (AHA)/American College of Cardiology (ACC) guidelines suggest mechanical
12 prostheses for patients ≤ 50 years, biological prostheses for those ≥ 65 years, and preference-
13 based decisions for those aged 50-65 (5).

14 The lower age limits seem to be driven by some registry studies showing similar outcomes
15 after both types of valve replacement. Similar long-term survival rates have been reported in
16 middle aged patients (6,7) as well as in young patients under 50 years (8). Also a higher
17 incidence of stroke was reported after sM-AVR (9). These results lead to more frequent use
18 of bioprostheses in younger patients.

19 However, several studies have shown an increase in mortality, major adverse cardiac events
20 (MACEs), and reoperations in association with sB-AVR (9–14). Our group published two
21 papers regarding the choice of prosthesis. Besides finding that implantation of transcatheter
22 aortic valves compared to surgical AVR in patients younger than 65 years of age is associated
23 with higher all-cause mortality (15), Traxler et al. recently observed better long-term survival

1 and a lower risk of reoperation after sM-AVR in patients aged 50-65 years (14) as well as in
2 patients aged ≤ 50 years (13).

3 The described discrepancies show that the decision between sB-AVR and sM-AVR is not fully
4 standardized and the optimal type of prosthesis for middle-aged patients (50-65 years of
5 age) needs to be evaluated in more detail. Therefore, we conducted a population-based
6 cohort study based on all patients aged between 50 and 65 years who underwent isolated
7 surgical AVR in Austria between 2010 and 2020 and were covered by the main Austrian
8 insurance carriers, which ensured their data were gathered. We extended our previously
9 published study based on the AUTHEARTVISIT registry to gain stronger evidence by including
10 additional patients who underwent surgery after 2018 and up to 2020 and performing
11 propensity score matching (PSM) to create two comparable patient groups. Real-life data
12 based on ICD-10, ATC, and MEL codes (see Supplementary Tables 1-5) were collected from
13 the Austrian insurance funds. Our primary endpoint was the comparison of survival after sB-
14 AVR or sM-AVR. Secondary endpoints were MACEs, reoperations, survival after reoperation,
15 and stroke or bleeding after each procedure.

16

17 **Methods**

18 *Study design*

19 In compliance with the Declaration of Helsinki, we conducted a nationwide, population-
20 based cohort study. The AUTHARTVISIT Study was approved by the ethics committee of
21 lower Austria (GS1-EK-4/722-2021). The trial was registered at clinicaltrials.gov
22 (NCT05912660). We obtained the clinical and operative data for all patients registered in the
23 Austrian Health Care System who underwent surgical AVR (sM-AVR [MEL code DB082] or sB-

1 AVR [MEL codes DB060, DB070, and DB080]) in Austria between the years 2010 and 2020
2 who were between 50 and 65 years of age (see Supplementary Tables 1 and 4).
3 Patients undergoing transcatheter aortic valve implantation (TAVI; MEL codes DB025,
4 DB026, DB021, or XN010) as the index procedure were not included in the analyzed sample.
5 Patients <50 years of age or >65 years of age were excluded from the study. Patients with
6 concomitant heart surgery, including multivalvular surgery or additional procedures
7 performed during the index operation, were also excluded.
8 Furthermore, patients receiving a coronary artery stent (MEL code DD050 “implantation of a
9 stent in the coronary artery” or DD060 “implantation of a drug eluting stent in a coronary
10 artery”) within 4 months prior to the AVR were excluded from this analysis to exclude
11 patients with percutaneous coronary intervention and guarantee the selection of patients
12 with pure AVR procedures (see Supplement Section 2). The data set included 3761 patients:
13 1018 who underwent sM-AVR and 2743 who underwent sB-AVR.

14

15 *Statistical analysis*

16 Categorical variables are presented as counts and percentages. Continuous variables are
17 summarized as the median and the 1st and 3rd quartile (interquartile range [IQR]).

18 We primarily evaluated the association between prosthesis type (sB-AVR or sM-AVR) and all-
19 cause death. As secondary outcomes, the time until MACEs, death or reoperation
20 (reoperation-free survival), reoperation, heart failure, myocardial infarction, embolic stroke
21 or ICH, and bleeding other than embolic stroke or ICH was investigated (see Supplementary
22 Table 2). MACE is a combined endpoint consisting of death, reoperation, heart failure, heart
23 attack, and embolic stroke or intracerebral hemorrhage (ICH). The exploratory outcome was
24 time to all-cause death after reoperation.

1 The association between prosthesis type and the primary outcome, all-cause death, was
2 evaluated using a Cox regression model. This model was adjusted for age, sex, and other co-
3 morbidities present within 1 year before the index surgery, including myocardial Infarction;
4 embolic stroke or ICH; diabetes mellitus; obesity; hyperlipidemia; hyperuricemia/gout;
5 valvular, rhythmological, or other cardiomyopathies (CMPs); ischemic CMP; arteriosclerosis;
6 pulmonary diseases; kidney diseases; and malignant diseases (see Supplementary Table 5).
7 Kaplan-Meier curves were created and the results of the Cox regression model presented as
8 hazard ratios (HRs) and corresponding 95% confidence intervals (CIs), as well as p-values.
9 This model was repeated with the interaction terms between sex and prosthesis type, as
10 well as age and prosthesis type. The proportional hazards assumption was evaluated using
11 Schönfeld residuals, and collinearity was evaluated using variance inflation factors.

12 The secondary outcomes MACEs and death or reoperation were analyzed similar to the
13 primary endpoint. The time until the remaining events (heart failure, myocardial infarction,
14 embolic stroke or ICH, reoperation, bleeding other than embolic stroke or ICH) was assessed
15 using competing risk regression including death as a competing event using the Fine and
16 Grey method. Cumulative incidence functions were plotted and results of competing risk
17 regression models presented as HRs and corresponding 95% CIs with p-values. Due to the
18 small number of events, time to all-cause death after reoperation was only evaluated in a
19 descriptive manner using the Kaplan-Meier method. HRs >1 for the predictor "prosthesis
20 type" are to be interpreted as patients who underwent sB-AVR being at higher risk of
21 experiencing the particular event compared to patients who underwent sM-AVR.

22 In sensitivity analyses, all models were also calculated for the subgroup of patients aged 50 -
23 60 years. Models for heart failure and MACEs were calculated for patients without heart
24 failure before the index surgery. In additional sensitivity analyses, all models were repeated

1 with the propensity score-matched prosthesis groups. Propensity scores were estimated by
2 logistic regression based on the following cofounders: age, sex, and co-morbidities present 1
3 year before the index surgery (myocardial infarction; embolic stroke or ICH; diabetes
4 mellitus; obesity; hyperlipidemia; hyperuricemia/gout; valvular, rhythmological, and other
5 CMPs; ischemic CMP; arteriosclerosis; pulmonary diseases; kidney diseases; malignant
6 diseases).

7 The matching was performed using the nearest neighbor method, 1:1 ratio, and caliper
8 width of 0.01. Notably, after PSM, the sample size and event rates were lower; the full
9 model including all confounders could not be calculated for all outcomes. Co-morbidities not
10 included in the models are indicated as not available (NA).

11 All analyses were performed using R, version 4.3.2. All p-values < 0.05 were considered
12 significant. Due to the retrospective and exploratory character of the study, no correction
13 for multiplicity was applied. Therefore, results on secondary and exploratory outcomes
14 should be interpreted with caution.

15

16 **Results**

17 *Study population and patient characteristics*

18 From 2010 to 2020, 3761 patients underwent surgical AVR: 1018 sM-AVR and 2743 sB-AVR.

19 Over all observed years, more patients aged 50-65 years underwent sB-AVR, as did the
20 subgroup of patients aged 50 – 60 years (Figure 1). Patients undergoing sB-AVR were
21 generally older and included larger proportions of patients with diabetes mellitus, ischemic
22 CMP, and malignant diseases, whereas a significantly larger proportion of patients who
23 underwent sM-AVR had hyperuricemia/gout (see Table 1). For detailed information on
24 prescribed medicaments, see Supplementary Table 6.

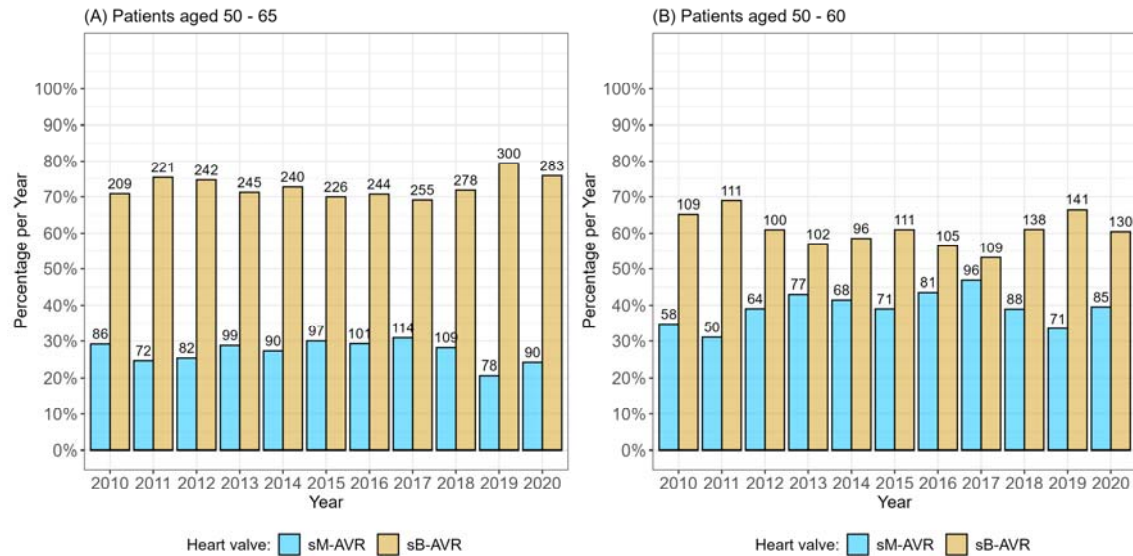
It is made available under a [CC-BY-NC-ND 4.0 International license](https://creativecommons.org/licenses/by-nc-nd/4.0/) .

1 Due to this imbalance between groups, we performed PSM (see Table 1).

Variables	All data			After PSM		
	sM-AVR (n=1018)	sB-AVR (n= 2743)	P-value	sM-AVR (n=902)	sB-AVR (n= 902)	P-value
Patients aged 50 – 65 years						
Median age, years (IQR)	56 (53 - 60)	61 (57 - 63)	<0.001	57 (54 - 60)	57 (54 - 60)	0.913
Sex, female	284 (27.9%)	743 (27.09%)	0.649	255 (28.27%)	233 (25.83%)	0.266
Heart failure	91 (8.94%)	295 (10.75%)	0.116	74 (8.2%)	78 (8.65%)	0.799
Myocardial infarction	24 (2.36%)	93 (3.39%)	0.130	23 (2.55%)	18 (2%)	0.527
Embolic stroke or ICH	9 (0.88%)	48 (1.75%)	0.075	9 (1%)	8 (0.89%)	1
Diabetes mellitus	118 (11.59%)	441 (16.08%)	<0.001	111 (12.31%)	105 (11.64%)	0.717
Obesity	84 (8.25%)	233 (8.49%)	0.863	71 (7.87%)	62 (6.87%)	0.471
Hyperlipidemia	254 (24.95%)	647 (23.59%)	0.408	207 (22.95%)	205 (22.73%)	0.955
Hyperuricemia/gout	40 (3.93%)	71 (2.59%)	0.040	27 (2.99%)	28 (3.1%)	1
Valvular, rhythmological, and other CMPs	839 (82.42%)	2307 (84.1%)	0.232	739 (81.93%)	735 (81.49%)	0.855
Ischemic CMP	394 (38.7%)	1252 (45.64%)	<0.001	340 (37.69%)	357 (39.58%)	0.439
Arteriosclerosis	33 (3.24%)	119 (4.34%)	0.154	31 (3.44%)	20 (2.22%)	0.155
Pulmonary diseases	31 (3.05%)	102 (3.72%)	0.371	27 (2.99%)	25 (2.77%)	0.888
Kidney diseases	65 (6.39%)	194 (7.07%)	0.505	57 (6.32%)	51 (5.65%)	0.620
Malignant diseases	16 (1.57%)	85 (3.1%)	0.014	13 (1.44%)	15 (1.66%)	0.849
Patients aged 50 – 60 years						
Median age, years (IQR)	55 (53 - 57)	57 (54 - 59)	<0.001	56 (53 - 58)	55 (53 - 58)	0.775
Sex, female	219 (27.07%)	290 (23.16%)	0.050	171 (25.37%)	172 (25.52%)	1
Heart failure	61 (7.54%)	110 (8.79%)	0.358	39 (5.79%)	47 (6.97%)	0.435
Myocardial infarction	16 (1.98%)	36 (2.88%)	0.261	12 (1.78%)	9 (1.34%)	0.660
Embolic stroke or ICH	6 (0.74%)	26 (2.08%)	0.027	5 (0.74%)	4 (0.59%)	1
Diabetes mellitus	76 (9.39%)	161 (12.86%)	0.019	58 (8.61%)	62 (9.2%)	0.774
Obesity	65 (8.03%)	99 (7.91%)	0.983	43 (6.38%)	42 (6.23%)	1
Hyperlipidemia	194 (23.98%)	265 (21.17%)	0.148	150 (22.26%)	132 (19.58%)	0.255
Hyperuricemia/gout	28 (3.46%)	24 (1.92%)	0.041	16 (2.37%)	12 (1.78%)	0.567
Valvular, rhythmological, and other CMPs	665 (82.2%)	1042 (83.23%)	0.587	536 (79.53%)	546 (81.01%)	0.538
Ischemic CMP	292 (36.09%)	492 (39.3%)	0.157	250 (37.09%)	241 (35.76%)	0.651
Arteriosclerosis	25 (3.09%)	40 (3.19%)	0.997	20 (2.97%)	18 (2.67%)	0.869
Pulmonary diseases	20 (2.47%)	42 (3.35%)	0.311	15 (2.23%)	17 (2.52%)	0.858
Kidney diseases	46 (5.69%)	73 (5.83%)	0.967	38 (5.64%)	30 (4.45%)	0.384
Malignant diseases	11 (1.36%)	34 (2.72%)	0.057	10 (1.48%)	4 (0.59%)	0.179

2 Table 1: Characteristics and pre-existing medical diagnoses at the time of the index operation. Unless otherwise indicated,
3 the values are given as the number of patients with a diagnosis and the corresponding percentage of total patients in the
4 treatment group.

5



1
2 Figure 1: Percentages per year (y-axis) and absolute numbers (above the bars) of patients receiving biological or mechanical
3 valves. (A) Patients aged 50 – 65 years. (B) The subgroup of patients aged 50 - 60 years.

4

5

6 *Primary outcome*

7 For sB-AVR, we observed a significantly higher risk of all-cause death compared to sM-AVR

8 (HR: 1.352; 95% CI: 1.109 - 1.649, $p=0.003$, Figure 2 and 3A). This was also observed in the

9 subgroup of patients aged 50 – 60 years (HR: 1.601; 95% CI: 1.235 - 2.074, $p<0.001$, Figure 2

10 and 3C). PSM did not change the result in the overall cohort (HR: 1.400; 95% CI: 1.103 -

11 1.778, $p=0.006$, Figure 2 and 3C) or the subgroup aged 50 – 60 years (HR: 1.645; 95% CI:

12 1.209 - 2.238, $p=0.002$, Figure 2 and 3D).

13 For further details on the statistical models, see Supplementary Table 7.

14

It is made available under a [CC-BY-NC-ND 4.0 International license](https://creativecommons.org/licenses/by-nc-nd/4.0/).

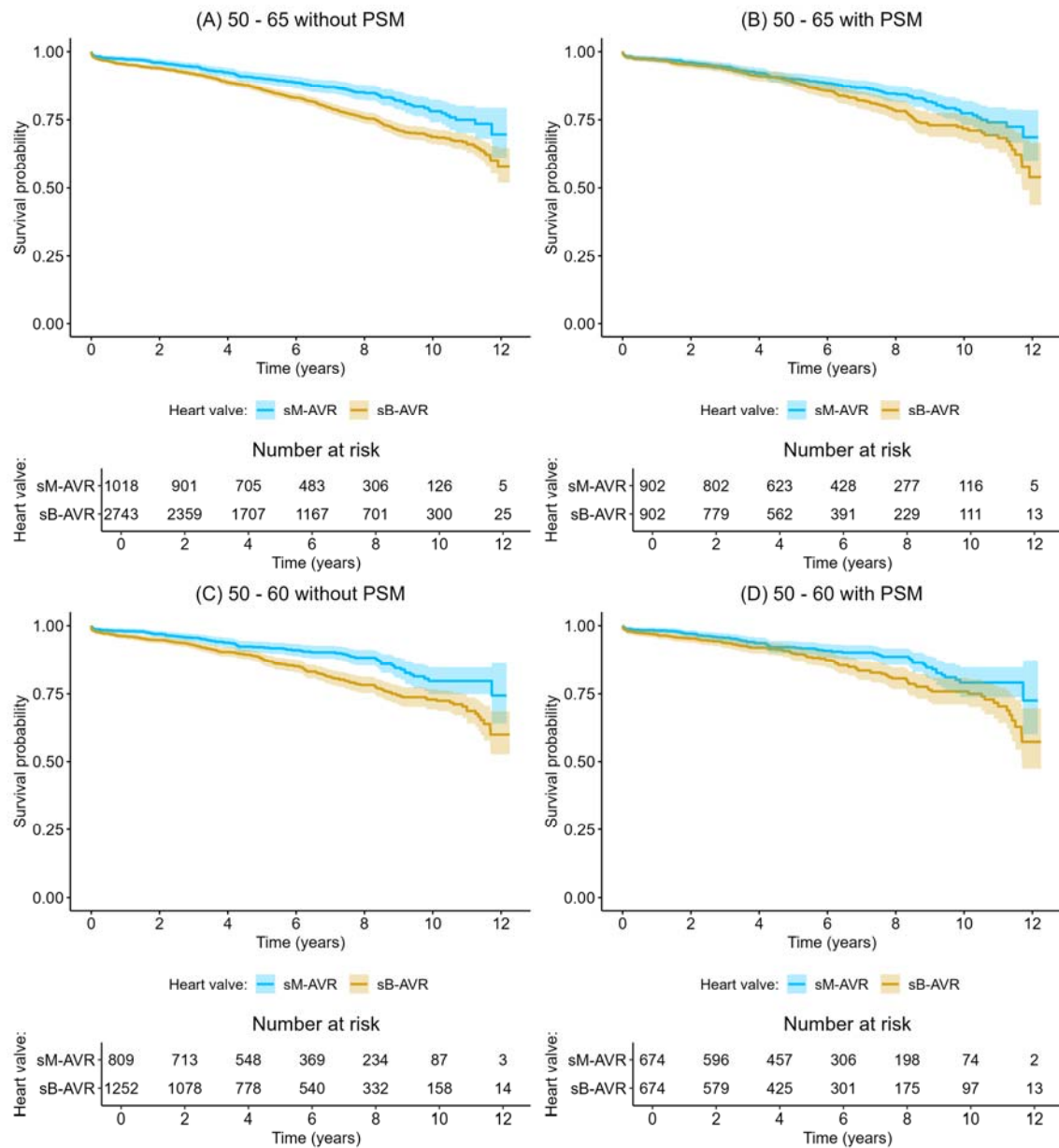


Figure 2: Kaplan-Meier curves and 95% confidence intervals for all-cause death before (A,C) and after (B,D) PSM for all patients aged 50 – 65 years (A,B) and the subgroup of patients aged 50 – 60 years (C,D)

1

2

3

4

5

6

7 *Secondary outcomes*

8 *MACEs*

9 A significantly higher risk of MACEs was observed for sB-AVR compared to sM-AVR (HR:

10 1.182; 95% CI: 1.016 - 1.375, $p=0.03$, Figure 3A). This was also observed in the subgroup of

11 patients aged 50 – 60 years (HR: 1.340; 95% CI: 1.105 - 1.624, $p=0.003$, Figure 3C). PSM did

1 not change the result in the overall cohort (HR: 1.224; 95% CI: 1.020 - 1.469, $p=0.029$, Figure
2 3B) or the subgroup aged 50 – 60 years (HR: 1.370; 95% CI: 1.092 - 1.718, $p=0.007$, Figure
3 3D). In the cohort of patients aged 50 – 65 years, we observed a trend towards a decreasing
4 advantage of sM-AVR compared to sB-AVR concerning MACEs with age ($p=0.042$); however,
5 after PSM, the interaction terms between prosthesis type and age, as well as sex, did not
6 show significant results (see Supplementary Table 8, Figure S1).

7

8 *Reoperation-free survival*

9 Furthermore, a significantly lower probability of reoperation-free survival (see
10 Supplementary Table 9, Figure S2) was observed for sB-AVR compared to sM-AVR (HR:
11 1.550; 95% CI: 1.260 - 1.908, $p<0.001$, Figure 3A). This was also observed in the subgroup of
12 patients aged 50 – 60 years (HR: 1.732; 95% CI: 1.325 - 2.264, $p<0.001$, Figure 3C). PSM did
13 not change the result in the overall cohort (HR: 1.566; 95% CI: 1.223 - 2.005, $p<0.001$, Figure
14 3B) or the subgroup aged 50 – 60 years (HR: 1.885; 95% CI: 1.373 - 2.587, $p<0.001$, Figure
15 3D).

16

17 *Reoperation*

18 Concerning reoperation as outcome (see Supplementary Table 10, Figure S3), a significantly
19 higher risk of reoperation was observed for sB-AVR compared to sM-AVR (HR: 2.338; 95% CI:
20 1.360 - 4.019, $p=0.002$, Figure 3A). This was also observed in the subgroup of patients aged
21 50 – 60 years (HR: 2.015; 95% CI: 1.075 - 3.778, $p=0.029$, Figure 3C). PSM did not change the
22 result in the overall cohort (HR: 2.451; 95% CI: 1.330 - 4.516, $p=0.004$, Figure 3B) or the
23 subgroup aged 50 – 60 years (HR: 2.579; 95% CI: 1.255 - 5.298, $p=0.01$, Figure 3C). The

1 interaction terms between prosthesis type and age, as well as sex, did not show significant
2 results.

3 *Heart failure*

4 We did not find a significant difference between sB-AVR and sM-AVR for the risk of newly
5 diagnosed heart failure (Figure 3, Supplementary Table 11, Figure S4) in the overall cohort
6 ($p=0.21$, after PSM: $p=0.11$). Although not significant, a trend of a larger risk of newly
7 diagnosed heart failure was observed for sB-AVR within the subgroup of patients aged 50 –
8 60 years (HR: 1.379; 95% CI: 0.997 - 1.908, $p=0.052$). This was also observed after PSM (HR:
9 1.457; 95% CI: 1.005 - 2.114, $p=0.047$). The interaction terms between prosthesis type and
10 age, as well as sex, did not show significant results.

11

12 *Myocardial infarction*

13 We did not find a significant difference between sB-AVR and sM-AVR for the risk of
14 myocardial infarction (Figure 3, Supplementary Table 12, Figure S5) in the overall cohort
15 ($p=0.57$, after PSM: $p=0.073$) or the subgroup aged 50 – 60 years ($p=0.40$, after PSM:
16 $p=0.33$).

17

18 *Embolic stroke and ICH*

19 We also did not find a significant difference between sB-AVR and sM-AVR for the risk of
20 embolic stroke or ICH (Figure 3, Supplementary Table 13, Figure S6) in the overall cohort
21 ($p=0.46$, after PSM: $p=0.34$) or the subgroup aged 50 – 60 years ($p=0.14$, after PSM:
22 $p=0.062$). Although the main effects were not significant in the overall cohort of patients
23 aged 50 – 65 years, we observed a trend towards a decreasing advantage of sM-AVR
24 compared to sB-AVR concerning embolic stroke or ICH with age ($p=0.004$). The same trend

1 was observed in the subgroup of patients aged 50 – 60 years ($p=0.029$). After PSM, the
2 interaction term between prosthesis type and age remained significant for the overall cohort
3 ($p=0.021$) but not for the subgroup ($p=0.35$).

4 *Bleeding*

5 We did not find a significant difference between sB-AVR and sM-AVR for the risk of bleeding
6 other than embolic stroke or ICH (Figure 3, Supplementary Table 14, Figure S7) in the overall
7 cohort ($p=0.30$, after PSM: $p=0.13$) or the subgroup aged 50 – 60 years ($p=0.42$, after PSM:
8 $p=0.17$). Although the main effects were not significant, in the cohort of patients aged 50 –
9 65 years, we observed a trend towards an advantage of sM-AVR compared to sB-AVR
10 concerning bleeding other than embolic stroke or ICH in females, whereas a disadvantage of
11 sM-AVR was found for males ($p=0.037$). The same trend was observed in the subgroup of
12 patients aged 50 – 60 years ($p=0.045$). After PSM, the interaction term between prosthesis
13 type and age remained significant for the overall cohort ($p=0.046$) but not for the subgroup
14 aged 50 – 60 years ($p=0.14$).

15

16 *Outcome after reoperation*

17 For survival after reoperation, only a small number of events were observed. The 5-year
18 survival rates were estimated to be 85.2% (95% CI: 68% - 100%) in the sM-AVR group and
19 75.8% (95% CI: 66.6% - 86.2%) in the sB-AVR group. In the subgroup of patients aged 50 – 60
20 years, the 5-year survival rates were estimated to be 90.9% (95% CI: 75.4% - 100%) in the
21 sM-AVR group and 79.0% (95% CI: 66.6% - 93.6%) in the sB-AVR group (see Supplementary
22 Figure S8).

23

24

It is made available under a [CC-BY-NC-ND 4.0 International license](https://creativecommons.org/licenses/by-nc-nd/4.0/).

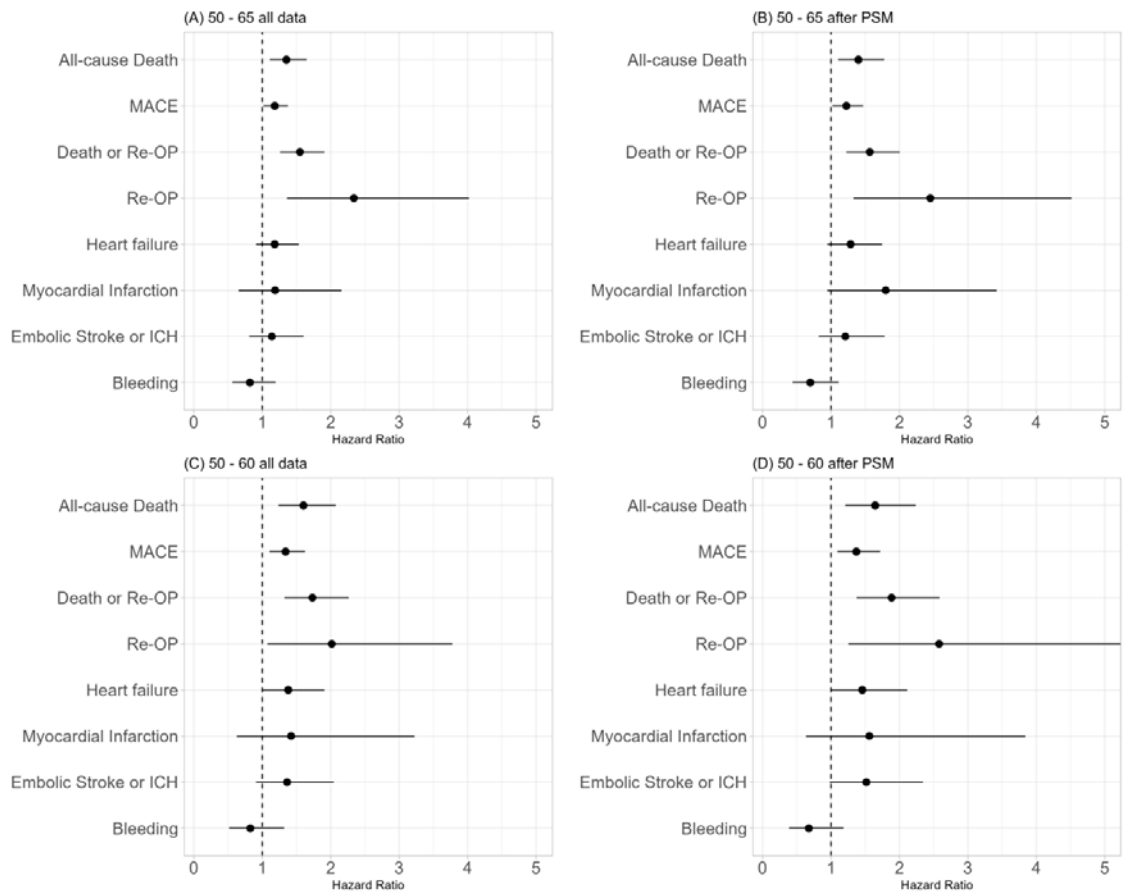


Figure 3: Hazard ratios (HRs) and 95% confidence intervals from multivariable regression models for all outcomes before (A, C) and after (B, D) PSM for all patients aged 50 – 65 years (A, B) and the subgroup of patients aged 50 – 60 years (C, D). HR > 1 indicates a higher risk of the event occurring with the biological valve than with the mechanical valve.

Discussion

We found that middle aged patients undergoing AVR in Austria had a significantly longer survival after sM-AVR compared to sB-AVR. PSM did not change this result. These results confirm previous findings showing that patients who underwent sB-AVR had a significantly higher 15-year-mortality (16).

Additionally, the risk of MACE and reoperation was significantly higher after sB-AVR. Stassano and colleagues found similar results with significantly higher rates of valve failure and reoperation after sB-AVR compared to sM-AVR (17).

Notably, ESC guidelines recommend sM-AVR for patients <60 years (4), but sB-AVR outnumbered sM-AVR overall (72.93% vs. 27.07%) and in patients aged 50–60 years (60.75%

1 vs. 39.25%). We also observed, despite a Class IIb recommendation to consider the use of
2 mechanical prostheses in patients already on long-time anticoagulation, that more than 9%
3 of patients undergoing sB-AVR were treated with oral anticoagulants in the year prior to
4 surgery (4.41% of patients received vitamin K antagonists and 4.7% received direct oral
5 anticoagulants). AHA/ACC guidelines suggest sM-AVR only for those <50 years and claim a
6 better hemodynamic status and lower thromboembolic risk sB-AVR (5), though our data did
7 not confirm these advantages. In contrast to previous studies, there was no statistically
8 significant difference in the incidence of bleeding events after sM-AVR. More specifically, we
9 did not observe a significant increase in general bleeding or intracerebral bleeding, which we
10 think may be of particular importance. Hammermeister and colleagues found that patients
11 who underwent sB-AVR had a reduced risk of bleeding. No differences were found in
12 systemic embolism, infective endocarditis, and valve thrombosis (16).

13 However, similar to previous studies (16), we found no statistically significant difference in
14 the incidence of stroke. Furthermore, in the propensity score-matched cohort, we observed
15 a significantly greater risk of reoperation after sB-AVR compared to sM-AVR. Notably, the
16 survival probability 10 years after reoperation was 71% after sM-AVR and 62.7% after sB-
17 AVR. However, the results on survival after reoperation are based on a reduced number of
18 events.

19 Most of the additional information that we have regarding long-term survival after sB-AVR
20 or sM-AVR comes from registry studies, such as the abovementioned studies by Schnittman
21 (8) and Goldstone (9). Alex and colleagues observed no differences in survival, stroke,
22 bleeding, or endocarditis but a higher incidence of reoperation 15 years after sB-AVR (18)
23 and Glaser et al. showed better long-term survival and a lower risk of reoperation after sM-
24 AVR (11). However, in contrast to our findings, a higher risk of major bleeding events was

1 reported for the patient group with sM-AVR. One possible explanation is reporting bias in
2 registry studies with underestimation of the total bleeding event rate. Vogt et al. found no
3 difference in 5-year mortality or reoperation but a higher stroke rate in sM-AVR patients
4 (3.3% vs. 1.5%) (19).

5 In four meta-analyses published between 2019 and 2024 by Diaz (20), Jiang (21), Warraich
6 (22) and Leviner (23), sB-AVR was associated with significantly worse survival rates and
7 higher incidences of reoperation alongside with lower rates of bleeding compared to sM-
8 AVR.

9 Despite robust evidence of a survival benefit after sM-AVR compared to sB-AVR, over the
10 past few years, guideline recommendations and current practice went in the opposite
11 direction. The age limits decreased for sB-AVR rather than sM-AVR. Although sM-AVR has
12 the benefit of longevity of the prostheses, sB-AVR may be preferred because it does not
13 require lifelong anticoagulation therapy due to the promising but unproven concept of TAVI
14 “valve-in-valve”-strategy as a less invasive option for future interventions in the case of
15 bioprosthetic valve failure. This ongoing discussion led to our decision to up-scale the
16 patient cohort from our previous study regarding the choice of aortic valve prosthesis to
17 obtain an even more robust dataset. The current analysis include 3824 patients with a
18 follow-up of up to 12 years and thus upgrades our previous cohort that included 2612
19 patients from the same age group with a significantly shorter follow-up. In addition, to
20 further overcome the shortages of a retrospective analysis, we aimed to create two
21 comparable groups by performing PSM and including stroke, ICH, and general bleeding in
22 our analysis, as those are strong arguments in every discussion regarding prosthesis choice
23 (14).

1 One of the downsides of registry studies and meta-analyses is that only existing data can be
2 used, which is why almost exclusively survival, rate of reoperation, and MACEs are
3 compared. Yet, there are studies showing further downsides of sB-AVR. Percy and his
4 colleagues observed that subclinical structural valve degeneration (SVD) occurs in more than
5 40% of patients <65 years of age, 21.5% of whom progressed to clinical SVD or repeat aortic
6 valve procedures. First signs of SVD occur as early as 11 months after sB-AVR (24). These
7 results support the findings of Salaun et al. who found, after a median follow-up of 6.7
8 months, that 25.6% of patients had leaflet calcifications on computed tomography and 38%
9 developed hemodynamic valve deterioration (25).

10 As many studies have observed age-dependent accelerated SVD after sB-AVR, which may
11 lead to a higher incidence of reoperation, especially in young patients (26–28), and a
12 possibly increased risk of death for patients undergoing reoperation, the choice of aortic
13 valve prosthesis should be made with care. Also the consequence that younger patients may
14 reject their bioprosthesis due to a humoral and cellular immune response should be
15 included in the decision for the heart valve type (29–31).

16

17 **Limitations**

18 Our study aimed to show real-world evidence through the utilization of collected data from
19 the Austrian insurance funds. Like many health service research studies, the observational
20 nature of our research comes with certain limitations. We have the great advantage of being
21 able to collect data on all patients registered in the Austrian Health System who underwent
22 sB-AVR or sM-AVR in Austria between 2010 and 2020. As health care in Austria is a national
23 system with good access to care, the majority (~98%) of the Austrian population is
24 registered.

1 Although our data were collected retrospectively, meaning they do not adhere to the
2 standards of a prospective randomized trial and controlled allocation of treatments was not
3 performed, we aimed to create two comparable patient groups and reduce the possibility
4 that sM-AVR was more frequently performed in younger, healthier individuals than sB-AVR
5 by performing Propensity Score Matching.

6 Due to our study utilizing administrative data, the information comes from billing records
7 and discharge codes. This means we are reliant on the accurate coding of diseases and
8 events across the country for a dependable analysis. Unfortunately, we cannot verify or
9 correct this data retrospectively, which could introduce bias and cause inconsistencies when
10 compared to prospective clinical databases. Moreover, we were unable to thoroughly
11 investigate the medical reasons behind deaths or reoperations among the patients in the
12 dataset. As a result, it was not possible to exclude patients whose death or reoperation was
13 unrelated to the original surgery. Nonetheless, the main outcome measures used in our
14 study involve events that require hospital care, and these are likely to be reported accurately
15 to the Austrian health insurance carriers for billing purposes.

16

17 **Conclusions**

18 Based on our data from patients who underwent isolated AVR in Austria between 2010 and
19 2020, we suggest that the current trend in lowering the age limits for sB-AVR has to be re-
20 evaluated critically. In our population-based study, we observed a significantly increased
21 mortality and reoperation risk after sB-AVR in younger patients. Therefore, the choice of
22 aortic valve prosthesis in younger patients should be handled with care.

23

24 **Acknowledgements**

1 We thank the Pharmaco-economics Advisory Council of the Austrian Sickness Funds for
2 providing the data, especially Ms. Karin Allmer for quality assurance of the database query
3 and Mr. Ludwig Weissengruber for organizational support for data generation.

4

5 **Competing interests**

6 All authors declare no conflict of interest.

- 1 1. Aluru JS, Barsouk A, Saginala K, Rawla P, Barsouk A. Valvular Heart Disease
2 Epidemiology. *Med Sci*. 15. Juni 2022;10(2):32.
- 3 2. Nkomo VT, Gardin JM, Skelton TN, Gottdiener JS, Scott CG, Enriquez-Sarano M.
4 Burden of valvular heart diseases: a population-based study. *The Lancet*. September
5 2006;368(9540):1005–11.
- 6 3. Watkins AR, EL-Andari R, Fialka NM, Kang JJh, Hong Y, Bozso SJ, u. a. Long-term
7 outcomes following aortic valve replacement in bioprosthetic vs mechanical valves. *Heart
8 Lung*. Januar 2025;69:87–93.
- 9 4. Vahanian A, Beyersdorf F, Praz F, Milojevic M, Baldus S, Bauersachs J, u. a. 2021
10 ESC/EACTS Guidelines for the management of valvular heart disease. *Eur Heart J*. 12. Februar
11 2022;43(7):561–632.
- 12 5. Otto CM, Nishimura RA, Bonow RO, Carabello BA, Erwin JP, Gentile F, u. a. 2020
13 ACC/AHA Guideline for the Management of Patients With Valvular Heart Disease: A Report
14 of the American College of Cardiology/American Heart Association Joint Committee on
15 Clinical Practice Guidelines. *Circulation [Internet]*. 2. Februar 2021 [zitiert 10. Oktober
16 2024];143(5). Verfügbar unter:
17 <https://www.ahajournals.org/doi/10.1161/CIR.0000000000000923>
- 18 6. Chiang YP, Chikwe J, Moskowicz AJ, Itagaki S, Adams DH, Egorova NN. Survival and
19 long-term outcomes following bioprosthetic vs mechanical aortic valve replacement in
20 patients aged 50 to 69 years. *JAMA*. 1. Oktober 2014;312(13):1323–9.
- 21 7. Attia T, Yang Y, Svensson LG, Toth AJ, Rajeswaran J, Blackstone EH, u. a. Similar long-
22 term survival after isolated bioprosthetic versus mechanical aortic valve replacement: A
23 propensity-matched analysis. *J Thorac Cardiovasc Surg*. November 2022;164(5):1444-
24 1455.e4.
- 25 8. Schnittman SR, Adams DH, Itagaki S, Toyoda N, Egorova NN, Chikwe J. Bioprosthetic
26 aortic valve replacement: Revisiting prosthesis choice in patients younger than 50 years old.
27 *J Thorac Cardiovasc Surg*. Februar 2018;155(2):539-547.e9.
- 28 9. Goldstone AB, Chiu P, Baiocchi M, Lingala B, Patrick WL, Fischbein MP, u. a.
29 Mechanical or Biologic Prostheses for Aortic-Valve and Mitral-Valve Replacement. *N Engl J
30 Med*. 9. November 2017;377(19):1847–57.
- 31 10. Dunning J, Gao H, Chambers J, Moat N, Murphy G, Pagano D, u. a. Aortic valve
32 surgery: Marked increases in volume and significant decreases in mechanical valve use—an
33 analysis of 41,227 patients over 5 years from the Society for Cardiothoracic Surgery in Great
34 Britain and Ireland National database. *J Thorac Cardiovasc Surg*. Oktober 2011;142(4):776-
35 782.e3.
- 36 11. Glaser N, Jackson V, Holzmann MJ, Franco-Cereceda A, Sartipy U. Aortic valve
37 replacement with mechanical vs. biological prostheses in patients aged 50–69 years. *Eur
38 Heart J*. 7. September 2016;37(34):2658–67.
- 39 12. Weber A, Nouredine H, Englberger L, Dick F, Gahl B, Aymard T, u. a. Ten-year
40 comparison of pericardial tissue valves versus mechanical prostheses for aortic valve
41 replacement in patients younger than 60 years of age. *J Thorac Cardiovasc Surg*. November
42 2012;144(5):1075–83.
- 43 13. Traxler D, Krotka P, Reichardt B, Copic D, Veraar C, Mildner M, u. a. Revisiting aortic
44 valve prosthesis choice in patients younger than 50 years: 10 years results of the
45 AUTHEARTVISIT study. *Eur J Cardiothorac Surg*. 2. Januar 2024;65(1):ezad308.
- 46 14. Traxler D, Krotka P, Laggner M, Mildner M, Graf A, Reichardt B, u. a. Mechanical
47 aortic valve prostheses offer a survival benefit in 50–65 year olds: AUTHEARTVISIT study. *Eur
48 J Clin Invest*. Mai 2022;52(5):e13736.

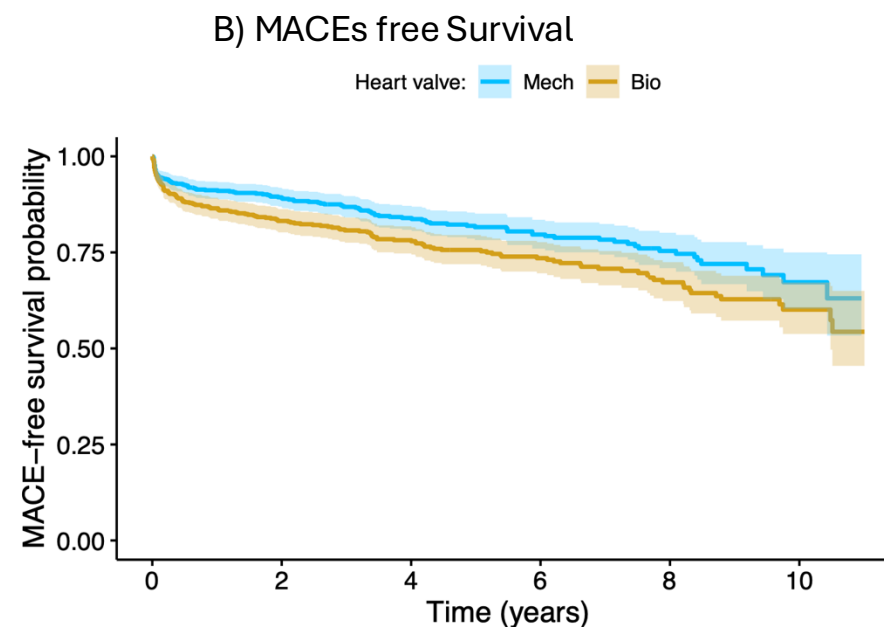
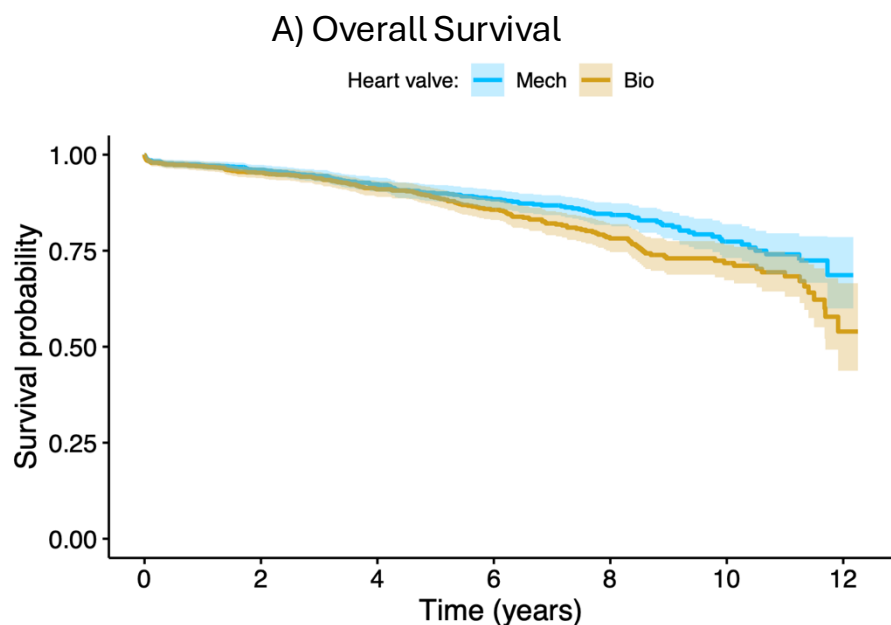
- 1 15. Auer J, Krotka P, Reichardt B, Traxler D, Wendt R, Mildner M, u. a. Selection for
2 transcatheter versus surgical aortic valve replacement and mid-term survival: results of the
3 AUTHEARTVISIT study. *Eur J Cardiothorac Surg*. 1. Juli 2024;66(1):ezae214.
- 4 16. Hammermeister K, Sethi GK, Henderson WG, Grover FL, Oprian C, Rahimtoola SH.
5 Outcomes 15 years after valve replacement with a mechanical versus a bioprosthetic valve:
6 final report of the Veterans Affairs randomized trial. *J Am Coll Cardiol*. Oktober
7 2000;36(4):1152–8.
- 8 17. Stassano P, Di Tommaso L, Monaco M, Iorio F, Pepino P, Spampinato N, u. a. Aortic
9 Valve Replacement. *J Am Coll Cardiol*. November 2009;54(20):1862–8.
- 10 18. Alex S, Hiebert B, Arora R, Menkis A, Shah P. Survival and Long-Term Outcomes of
11 Aortic Valve Replacement in Patients Aged 55 to 65 Years. *Thorac Cardiovasc Surg*. Juni
12 2018;66(04):313–21.
- 13 19. Vogt F, Santarpino G, Fujita B, Frerker C, Bauer T, Beckmann A, u. a. Surgical aortic
14 valve replacement in patients aged 50–69 years—insights from the German Aortic Valve
15 Registry (GARY). *Eur J Cardiothorac Surg*. 15. Juni 2022;62(1):ezac286.
- 16 20. Diaz R, Hernandez-Vaquero D, Alvarez-Cabo R, Avanzas P, Silva J, Moris C, u. a. Long-
17 term outcomes of mechanical versus biological aortic valve prosthesis: Systematic review
18 and meta-analysis. *J Thorac Cardiovasc Surg*. September 2019;158(3):706-714.e18.
- 19 21. Jiang Y, Wang S, Bian J, Chen S, Shao Y. Mechanical versus Bioprosthetic Aortic Valve
20 Replacement in Middle-Aged Adults: A Systematic Review and Meta-Analysis. *J Cardiovasc*
21 *Dev Dis*. 20. Februar 2023;10(2):90.
- 22 22. Warraich N, Sá MP, Jacquemyn X, Ahmad D, Serna-Gallegos D, Sultan I. Long-Term
23 Outcomes of Mechanical Versus Bioprosthetic Aortic Valve Replacement in Patients Aged
24 Under 50 Years: Meta-Analysis of Reconstructed Time-to-Event Data. *Am J Cardiol*.
25 September 2024;227:11–7.
- 26 23. Leviner DB, Witberg G, Levi A, Landes U, Schwartz N, Shiran A, u. a. Mechanical vs
27 Bioprosthetic Aortic Valve Replacement in Patients Younger Than 70 Years of Age: A Hazard
28 Ratio Meta-analysis. *Can J Cardiol*. März 2022;38(3):355–64.
- 29 24. Percy ED, Harloff M, Hirji S, Malarczyk A, Cherkasky O, Yazdchi F, u. a. Subclinical
30 Structural Valve Degeneration in Young Patients With Bioprosthetic Aortic Valves. *Ann*
31 *Thorac Surg*. Mai 2021;111(5):1486–93.
- 32 25. Salaun E, Mahjoub H, Dahou A, Mathieu P, Larose É, Després JP, u. a. Hemodynamic
33 Deterioration of Surgically Implanted Bioprosthetic Aortic Valves. *J Am Coll Cardiol*. Juli
34 2018;72(3):241–51.
- 35 26. Francica A, Benvegnù L, San Biagio L, Tropea I, Luciani GB, Faggian G, u. a. Ten-year
36 clinical and echocardiographic follow-up of third-generation biological prostheses in the
37 aortic position. *J Thorac Cardiovasc Surg*. Mai 2024;167(5):1705-1713.e8.
- 38 27. Piperata A, Fiocco A, Cavicchiolo A, Ponzoni M, Pesce R, Gemelli M, u. a. Carpentier-
39 Edwards Magna Ease bioprosthesis: a multicentre clinical experience and 12-year durability.
40 *Eur J Cardiothorac Surg*. 24. März 2022;61(4):888–96.
- 41 28. Johnston DR, Soltesz EG, Vakil N, Rajeswaran J, Roselli EE, Sabik JF, u. a. Long-Term
42 Durability of Bioprosthetic Aortic Valves: Implications From 12,569 Implants. *Ann Thorac*
43 *Surg*. April 2015;99(4):1239–47.
- 44 29. Z. Konakci K, Bohle B, Blumer R, Hoetzenecker W, Roth G, Moser B, u. a. Alpha-Gal on
45 bioprostheses: xenograft immune response in cardiac surgery. *Eur J Clin Invest*. Januar
46 2005;35(1):17–23.
- 47 30. Senage T, Paul A, Le Tourneau T, Fellah-Hebia I, Vadori M, Bashir S, u. a. The role of
48 antibody responses against glycans in bioprosthetic heart valve calcification and

- 1 deterioration. Nat Med. Februar 2022;28(2):283–94.
- 2 31. Calafiore AM, Haverich A, Gaudino M, Di Mauro M, Fattouch K, Prapas S, u. a.
- 3 Immunoreaction to xenogenic tissue in cardiac surgery: alpha-Gal and beyond. Eur J
- 4 Cardiothorac Surg. 15. Juni 2022;62(1):ezac115.
- 5

Association between surgical aortic valve replacement and long-term outcomes in 50 to 65-year-olds: Results of the AUTHEARTVISIT study

Summary

Results after aortic valve replacement were compared in patients from 50 to 65 years between mechanical and biological prostheses. After sB-AVR we observed a significantly higher risk for all-cause death (HR: 1.400; 95% CI: 1.103 - 1.778, $p=0.006$, A), MACEs (HR: 1.224; 95% CI: 1.020 - 1.469, $p=0.029$, B) and reoperation (HR: 2.451; 95% CI: 1.330 - 4.516, $p=0.004$) compared to sM-AVR before and after propensity score matching. Risk of bleeding and stroke did not differ between the groups.



Legend: HR = hazard ratio, CI = confidence interval