

1 **Colchicine for Prevention of Major Adverse Cardiovascular Events**

2 **A systematic review and meta-analysis of randomized clinical trials**

3

4 Federico Ballacci, MD<sup>1\*</sup>, Federica Giordano, MD<sup>1\*</sup>, Cristina Conte, MD<sup>1</sup>, Alessandro Telesca, MD<sup>1</sup>,  
5 Valentino Collini, MD<sup>1</sup>, Massimo Imazio, MD, FESC<sup>1,2</sup>.

6

- 7 1. Cardiothoracic Department, University Hospital Santa Maria della Misericordia, Udine, and  
8 Department of Medicine, University of Udine.  
9 2. Department of Medicine, University of Udine, Udine, Italy

10

11 \*These authors have contributed equally as first authors of the paper

12

13 Correspondence to:

14 Prof. Massimo Imazio, MD, FESC. Cardiothoracic Department, University Hospital Santa Maria  
15 della Misericordia, Udine, and Department of Medicine, University of Udine.

16 E-mail [massimo.imazio@uniud.it](mailto:massimo.imazio@uniud.it)

32 **Abstract**

33 **Aims.** Inflammation is a main pathophysiological driver in atherosclerotic cardiovascular diseases  
34 (ASCVD). Low-dose long-term colchicine for secondary prevention in patients with established  
35 ASCVD has been studied in multiple randomized trials in the last decade.

36 This meta-analysis aimed to evaluate the efficacy and safety of long-term low-dose colchicine for  
37 secondary prevention in patients with established ASCVD.

38 **Methods.** We conducted a systematic review and meta-analysis following PRISMA guidelines to  
39 evaluate studies reporting long-term outcomes in patients with ASCVD. We systematically searched  
40 PubMed, EMBASE and Scopus databases for relevant studies up to December 1, 2024. The primary  
41 outcome was the occurrence of Major Adverse Cardiovascular Events (MACE), a composite of  
42 cardiovascular death (CVD), myocardial infarction (MI) and stroke. Random-effects models were  
43 used to calculate pooled risk ratios (RR).

44 **Results.** Ten randomized clinical trials enrolling 22532 patients were identified. Addition of  
45 colchicine to standard medical treatment in patients with established ASCVD reduced the risk for  
46 MACE by 27% (RR 0.73, 95% CI 0.57 – 0.95), with a number needed to treat of 52. Colchicine was  
47 found to significantly reduce the risk of myocardial infarction (RR 0.83, 95% CI 0.72 - 0.96) and  
48 coronary revascularization (RR 0.79, 95% CI 0.65 - 0.94). There were no significant differences  
49 between the two groups concerning cardiovascular and non-cardiovascular mortality, risk of serious  
50 gastrointestinal events, infections requiring hospitalization and cancer.

51 **Conclusions.** These findings support the use of long-term low-dose colchicine for secondary  
52 prevention of MACE in clinical practice.

## 53 **Introduction**

54 Atherosclerotic cardiovascular disease (ASCVD) is the leading cause of mortality worldwide, with a  
55 rising global burden despite advances in prevention and treatment strategies.

56 Current guidelines strongly emphasize secondary prevention measures after coronary artery disease  
57 or stroke diagnosis, including lifestyle interventions, risk factor control, and antithrombotic  
58 therapy.[1,2] However, a significant residual risk of major adverse cardiovascular events (MACE)  
59 persists even with optimal treatment adherence.[3,4]

60 Inflammation is a key pathophysiological driver of atherosclerosis, with the potential to be an  
61 actionable target, as suggested by the association between inflammatory biomarkers, anti-  
62 inflammatory therapy and cardiovascular outcomes.[5–8] Colchicine, a potent and widely available  
63 anti-inflammatory agent extracted from plants of the genus *Colchicum*, has been widely used in the  
64 treatment of inflammatory diseases such as gout, familial Mediterranean fever, and pericarditis with  
65 good efficacy and safety profiles.[9–15] Its anti-inflammatory effects involve multiple pathways,  
66 including inhibition of microtubule formation and neutrophil function (i.e. chemotaxis, adhesion and  
67 mobilization), as well as inhibition of NLRP3 inflammasome.[16]

68 Early landmark studies, such as the COLCOT and the LoDoCo2 trials, demonstrated that colchicine  
69 reduces cardiovascular events in coronary artery disease.[17–20] However, these initial results have  
70 been challenged by subsequent trials, including CONVINCe in stroke patients[21] and CLEAR in  
71 post-myocardial infarction patients,[22] which have shown neutral results. To address these  
72 uncertainties, we conducted a systematic review and meta-analysis of randomized clinical trials to  
73 assess the overall effect of colchicine on major adverse cardiovascular events and their individual  
74 components in patients with coronary disease, recent myocardial infarction, and stroke.

## 75 **Methods**

76 This study was performed in accordance with the Preferred Reporting Items for Systematic Reviews  
77 and Meta-analysis (PRISMA) Guidelines.[23] The study protocol and the analysis plan were  
78 developed prospectively, and are available on the Open Science Framework (<https://osf.io/dqgwj>).

### 79 *Search strategy*

80 A comprehensive search for relevant articles on PubMed, EMBASE and Scopus was performed from  
81 inception through December 1<sup>st</sup>, 2024.

82 The search strategy combined the term "colchicine" with cardiovascular-related terms including  
83 "atherosclerosis", "coronary artery disease", "coronary heart disease", "angina", "infarction",  
84 "coronary syndrome", "ACS", "ischemic heart disease", "percutaneous coronary intervention", "PCI",  
85 "myocardial ischemia" and "stroke", with appropriate adaptations to each database. Only full-text  
86 publications were considered eligible, while conference abstracts were excluded. No other exclusion  
87 criterion was used. Reference lists of included articles were screened to identify further relevant  
88 studies. For trials with multiple published reports, the report with the longest pre-specified follow-up  
89 was selected, provided that blinding integrity was maintained.

### 90 *Selection criteria*

91 Studies were considered eligible if they were randomized clinical trials enrolling adult participants  
92 with established ASCVD, with the intervention consisting of long-term colchicine treatment (>3  
93 months) compared to standard treatment. Studies were not considered eligible if they did not report  
94 outcomes for cardiovascular death or myocardial infarction. Reviews and case reports were excluded.  
95 Complete inclusion and exclusion criteria can be found in the **Supplemental Material**.

### 96 *Data extraction and quality assessment*

97 Two investigators (FB and FG) independently reviewed the titles, abstracts, and full texts for inclusion  
98 criteria. Conflicts between reviewers were resolved by consensus or by consultation with a third  
99 investigator (MI). The following data were extracted from the included articles: first author or trial  
100 name, publication year, patient characteristics, intervention and follow-up duration. Risk of bias was

101 independently assessed by two investigators (FB and FG) according to the Cochrane Collaboration  
102 revised risk-of-bias tool for randomized trial (Rob2 version 2.0) composed of five domains:  
103 randomization process (D1); deviations from intended interventions (D2); missing out-  
104 come data (D3); measurement of the outcome (D4); and selection of the  
105 reported result (D5).[24,25]

#### 106 *Outcome definition*

107 The primary endpoint was defined as the composite of myocardial infarction, stroke, and  
108 cardiovascular death (MACE). Secondary endpoints included the composite of myocardial infarction,  
109 stroke, cardiovascular death, and coronary revascularization, as well as each of these components  
110 analysed individually.

111 Safety outcomes that were consistently reported across the included studies were also evaluated (non-  
112 cardiovascular death, serious infections, pneumonia requiring hospitalization, serious adverse  
113 gastrointestinal events, cancer).

#### 114 *Statistical Analysis*

115 We used a random-effects model with the Paule-Mandel estimator to calculate the pooled risk ratios  
116 (RR) with 95% confidence intervals (CIs) for the primary and secondary outcomes. A fixed-effects  
117 model was also conducted as sensitivity analysis. Heterogeneity was assessed using the  $I^2$  statistic,  
118 Galbraith plots were evaluated to identify outliers when  $I^2$  exceeded 50%.

119 A pre-specified subgroup analysis was performed for studies exclusively enrolling patients with acute  
120 coronary syndromes (ACS). Meta-regression analyses were restricted to studies with complete  
121 covariate data, and were used to explore the relationship between treatment effects and study-level  
122 characteristics including the proportion of ACS patients, diabetes, female sex, statin use, active  
123 smoking, and beta-blocker therapy. Leave-one-out sensitivity analyses were performed to assess the  
124 robustness of the findings. Publication bias was evaluated by examination of funnel plots. All  
125 statistical analyses followed the intention-to-treat principle. Statistical significance was set at  $p < 0.05$

126 (two-tailed). All analyses were performed using R version 4.3.3 (R Foundation for Statistical  
127 Computing, Vienna, Austria) with the *meta* and *metafor* packages.

128

## 129 **Results**

### 130 *Search Results and Baseline Characteristics*

131 The literature search identified a total of 5982 titles. After duplicate removal, titles and abstracts of  
132 3284 papers were evaluated, and 43 articles were considered for full-text screening. Of these, 10  
133 studies met the inclusion criteria and were included in the meta-analysis.[17,18,21,22,26–31] The  
134 references of all the included studies were searched for eligible entries, and no other study was  
135 deemed eligible for inclusion. The PRISMA flow diagram and checklist are shown in **Supplementary**  
136 **Table S1 and Figure S1.**

137 Seven studies were rated as being at “low” risk of bias, 1 study was rated as being at “high” risk of  
138 bias,[27] while 2 studies had unclear risk of bias[22,31] (**Supplementary Figure S2**).

139 A total of 22532 patients (female 4574, 20.3%) from 10 randomized clinical trials were included in  
140 the analysis. Trial inclusion criteria and comprehensive data are reported in **Table 1** and **Table 2**. In  
141 three trials, patients in the control group received optimal medical therapy without administration of  
142 placebo.[18,21,27] Differently from the other trials which included patients affected by coronary  
143 syndromes, one trial included patients affected by stroke as the main inclusion criterion.[21] Among  
144 coronary syndrome trials, 13,154 patients had ACS as a qualifying event, while 6,189 patients were  
145 affected by stable coronary artery disease.

146 Median duration of follow-up ranged from a minimum of 6 months to a maximum of 36 months. In  
147 6 trials, colchicine was administered at a dosage of 0.5 mg once daily,[17,21,26–28,30] while it was  
148 administered twice daily by Deftereos et al.[31] To ascertain treatment tolerance, investigators of the  
149 LoDoCo2 trial employed an open-label 30-day run-in phase before blinding and proceeding to the  
150 administration of 0.5 mg daily.[18] Patients enrolled in COPS the trial would receive colchicine 1 mg  
151 daily for the first month, followed by 0.5 mg once daily for 11 months.[29] The protocol of the

152 CLEAR trial was changed due to higher-than-expected discontinuation rates, and the administered  
153 dosage was changed to 0.5 mg per day. [22]

154 Results of the COPS trial for the composite of MACE and coronary revascularization, as well as  
155 cardiovascular and non-cardiovascular death, are reported according to the two-year follow-up  
156 prespecified analysis. [29,32]

#### 157 *Composite of Cardiovascular Death, Myocardial Infarction and Stroke*

158 Seven studies reported data on the primary outcome of this meta-analysis.[17,18,21,22,26,28,30] A  
159 total of 1428 (6.5%) patients developed MACE. The pooled analysis showed that colchicine reduced  
160 the RR for MACE by 27% [95% confidence interval (CI) 0.57 – 0.95,  $I^2 = 58\%$ ] (**Figure 1, Figure**  
161 **2**). Results were consistent for all studies at leave-one-out analysis. The estimated number needed to  
162 treat to prevent one occurrence of MACE was 52.

163 At Galbraith plot analysis, three trials were identified as the main outliers, with CLEAR[22] showing  
164 a neutral effect of colchicine, while LoDoCo[30] and Akrami et al.[28] showed a RR of 0.43 and  
165 0.32, respectively. Funnel plot inspection did not show clear publication bias, suggesting only mild  
166 asymmetry in small studies (**Supplementary Figure S3**).

167 Meta regression showed that active smoking significantly affected the effect of colchicine ( $\beta = 1.10$ ,  
168 95% CI 0.21 - 1.99,  $p = 0.016$ ), with a greater treatment effect observed in populations with lower  
169 smoking rates. Other covariates did not affect the treatment effect.

170 Subgroup analysis of trials enrolling ACS vs CCS patients showed a neutral effect of colchicine (RR  
171 0.73, 95% CI 0.47 – 1.14) in the ACS group, but there were no significant differences with the CCS  
172 group ( $p = 0.60$ ).

#### 173 *Secondary outcomes*

174 Colchicine reduced the relative risk of the composite of MACE and coronary revascularization by  
175 26% (RR 0.74, 95% CI 0.60 - 0.91,  $I^2 = 71\%$ ). Heterogeneity was mainly driven by CLEAR[22]  
176 showing neutral results (RR 0.99, 95% CI 0.85 - 1.14), while COLCOT and LoDoCo showed a RR

177 0.77 and 0.71, respectively.[17,30] Among individual components (**Figure 1, Figure 3**), colchicine  
178 significantly reduced the risk of myocardial infarction (RR 0.83, 95% CI 0.72 - 0.96,  $I^2 = 0\%$ ) and  
179 coronary revascularization (RR 0.79, 95% CI 0.65 - 0.94,  $I^2 = 30\%$ ). A trend towards stroke reduction  
180 was observed but did not reach statistical significance (RR 0.73, 95% CI 0.50 - 1.06). Cardiovascular  
181 mortality was similar between groups (RR 0.97, 95% CI 0.79 - 1.19; **Figure 4**). Results for individual  
182 endpoints were relatively homogeneous across all trials ( $I^2 < 50\%$ ). Funnel plot inspection did not  
183 show clear publication bias, suggesting only mild asymmetry in small studies (**Supplementary**  
184 **Figure S3**). Meta-regression analyses did not identify any significant effect modifiers for these  
185 outcomes. The estimated number needed to treat to avoid one occurrence of myocardial infarction or  
186 unplanned coronary revascularization were 168 and 92, respectively. Subgroup analysis of trials  
187 enrolling ACS vs CCS patients showed a neutral effect of colchicine on all secondary outcomes in  
188 the ACS group, but there were no significant differences with the CCS group.

#### 189 *Safety Outcomes*

190 Colchicine therapy did not increase the risk of non-cardiovascular mortality (RR 1.07, 95% CI 0.80  
191 - 1.42,  $I^2 = 46\%$ ; **Figure 4**). The risk of serious infections was similar between groups (RR 0.99, 95%  
192 CI 0.79 - 1.25,  $I^2 = 36\%$ ). Serious gastrointestinal adverse events showed a slight numerical increase  
193 with colchicine, although not reaching statistical significance (RR 1.13, 95% CI 0.92 - 1.39,  $I^2 = 0\%$ ).  
194 For pneumonia requiring hospitalization, while the pooled estimate showed no significant difference  
195 (RR 1.33, 95% CI 0.60 - 2.95), there was substantial heterogeneity across trials ( $I^2 = 64\%$ ), with  
196 COLCOT[17] showing an increased risk (RR 2.35, 95% CI 1.08 - 5.11) not confirmed in other studies.  
197 Importantly, cancer incidence was similar between groups (RR 0.97, 95% CI 0.82 - 1.15,  $I^2 = 0\%$ ).  
198 Forest plots for these safety outcomes are shown in **Supplementary Figure S4**.

199

#### 200 **Discussion**



201 This study-level meta-analysis of ten randomized clinical trials enrolling 22532 patients with ASCVD  
202 provides evidence that long-term low-dose colchicine is effective in reducing the risk of MACE,  
203 myocardial infarction and unplanned coronary revascularization in patients with ASCVD.

204 Previous meta-analyses have shown a protective effect of colchicine when compared to placebo or  
205 standard of treatment in regard to MACE, stroke, myocardial infarction and coronary  
206 revascularization.[33,34]

207 The recent publication of CLEAR,[22] the largest trial on long-term colchicine therapy in patients  
208 with ASCVD, challenged these findings showing an overall neutral effect of colchicine in acute  
209 coronary syndromes on the primary outcome of MACE.

210 To the best of our knowledge, this meta-analysis is the first to pool the effect of the CLEAR trial with  
211 other landmark trials on long-term low-dose colchicine in ASCVD. Regarding the primary endpoint  
212 (MACE), CLEAR[22] was the one with the highest relative weight among the included studies  
213 (32.0%, followed by CONVINCENCE[21] and LoDoCo2[18] with 22.6% and 20.1%, respectively).  
214 Nonetheless, this meta-analysis demonstrates a significant 27% relative risk reduction in MACE with  
215 colchicine therapy, with an estimated number needed to treat of 52 patients to prevent one event,  
216 which is consistent with previous reports while considering a substantially larger population.

217 However, it should be noted that including CLEAR lead to a meaningful increase in the study  
218 heterogeneity, which requires careful consideration.

219 While both trials on long-term low-dose colchicine in CCS (LoDoCo and LoDoCo2) [18,30] were  
220 positive for a reduction of MACE in patients in the experimental group, trials enrolling patients with  
221 ACS have mostly been neutral, with the notable exception of a relatively smaller trial by Akrami and  
222 colleagues.[28] While subgroup analysis showed a neutral pooled effect of colchicine in ACS patients  
223 (RR 0.73, 95% CI 0.47 – 1.14), there was no statistically significant interaction between clinical  
224 presentation subgroups ( $p = 0.60$ ).

225 These findings suggest that the presence of benefit of colchicine in ACS patients cannot be excluded  
226 with the available evidence, and the treatment effect should be considered consistent across clinical  
227 presentations until definitively proven otherwise by future research.

228 The identification of smoking as a significant effect modifier ( $\beta = 1.10$ ,  $p = 0.016$ ) requires careful  
229 consideration. When considering the trials used for meta regression, the heterogeneity in the  
230 proportion of patients with active smoking appears to be quite significant, ranging from 4.5% and  
231 11.8% (LoDoCo[30] and LoDoCo2[18] trials, respectively) to 40.8% (CLEAR)[22].

232 While providing a definite mechanistic explanation on the complex interplay between active smoking  
233 and colchicine is beyond the scope of this systematic review, the finding appears biologically  
234 plausible. Colchicine works by inhibiting microtubule polymerization, which reduces the activity of  
235 neutrophils and other inflammatory cells.[1,35] On the other hand, active smoking is known to  
236 promote chronic systemic and vascular inflammation through oxidative stress. Notably, active  
237 smoking may lead to cellular contraction and degeneration mediated by specifically interfering with  
238 microtubule function, possibly undermining a critical pharmacodynamic target in long term  
239 colchicine therapy.[36]

240 Our meta-analysis confirms the reduction in the risk of myocardial infarction and unplanned coronary  
241 revascularization in patients in the colchicine group, by 17% and 21% respectively. On the other hand,  
242 the inclusion of the CLEAR trial[22] in the pooled analysis for individual outcomes challenges the  
243 previously reported reduction in the risk of stroke. While less events were reported in the colchicine  
244 group [187 (risk: 1.7%) versus 234 (risk: 2.1%)], this finding did not reach statistical significance  
245 (RR 95% CI 0.50 – 1.06). Notably, the omission of CLEAR at leave-one-out analysis shows a  
246 significant reduction of 28% for the risk of stroke (95% CI 0.58 – 0.89). Interestingly, the outcome  
247 definition of Stroke reported by the CLEAR trial[22] uniquely includes subarachnoid haemorrhage  
248 and does not require imaging (CT or MRI) confirmation, potentially incorporating non-ischemic  
249 events that could dilute the treatment effect.

250 Regarding the effects on mortality and the safety outcomes, the present results align with previously  
251 published meta-analytic reports.[37] Nonetheless, the included trials were not powered to assess  
252 differences in these respect and the known side-effect spectrum of colchicine and concerns regarding  
253 the long-term immunomodulatory effects warrants careful evaluation of pooled data. While our meta-  
254 analysis provides reassuring data regarding the safety of low-dose colchicine treatment for all the  
255 safety outcomes, trials were not designed with appropriate power or follow-up time to thoroughly  
256 assess differences in mortality. Interestingly, all trials reported a higher rate of non-cardiovascular  
257 death compared to cardiovascular death, except for CLEAR,[22] despite the high cardiovascular risk  
258 of the enrolled populations. While this finding has been previously reported in published literature as  
259 well as recent meta-analyses,[33,34,38] CLEAR's divergent finding warrants careful interpretation,  
260 particularly given the size and the long follow-up period. Notably, the trial's definition of  
261 cardiovascular death included deaths of unknown cause, and was conducted during the COVID-19  
262 pandemic without specific reporting of respiratory-related hospitalizations, with potential  
263 misclassification of events.

264 The Food and Drug Administration (FDA) has approved the use of low dose colchicine for secondary  
265 prevention in ischemic heart disease,[39] while the recent 2024 European Society of Cardiology  
266 (ESC) guidelines on chronic coronary syndromes[40] have upgraded its recommendation to class IIA  
267 from previous 2021 ESC guidelines on cardiovascular prevention.[41] This systematic review  
268 provides evidence that combined results of available clinical trials suggest that colchicine effectively  
269 reduces MACE in patients with acute and especially chronic coronary syndromes, even after the  
270 neutral results of the CLEAR trial.

### 271 *Limitations*

272 This meta-analysis presents several limitations. Trial differences in population and outcome definition  
273 introduced heterogeneity in the pooled estimates, and reported data did not allow for time-to-event  
274 analysis, which was planned as a secondary analysis in the prospective analysis plan. Only six of the

275 included trials provided clear reporting on all the pre-specified outcomes and predictors. Moreover,  
276 this analysis used study-level data, that carries a risk of losing important information without access  
277 to individual patient data.

## 278 **Conclusions**

279 The addition of colchicine reduces the risk of MACE, myocardial infarction and coronary  
280 revascularization in patients with ASCVD treated with standard of therapy, with a good safety profile.

281 Our findings support the use of long-term low-dose colchicine for secondary prevention of MACE in  
282 clinical practice.

283

284 **Patient and public involvement:** Patients and/or the public were not involved in the design, or  
285 conduct, or reporting, or dissemination plans of this research.

286 **Data availability statement:** Data are available on reasonable request.

287 **Competing interests:** None declared.

288

289 **References**

- 290 1 Imazio M, Nidorf M. Colchicine and the heart. *Eur Heart J*. 2021;42:2745–60. doi:  
291 10.1093/eurheartj/ehab221
- 292 2 Imazio M, Agrimi C, Cescon L, *et al*. Colchicine for the treatment of the spectrum of  
293 cardiovascular diseases: current evidence and ongoing perspectives. *J Cardiovasc Med*.  
294 2024;25:653–63. doi: 10.2459/JCM.0000000000001647
- 295 3 Libby P, Lichtman AH, Hansson GK. Immune Effector Mechanisms Implicated in  
296 Atherosclerosis: From Mice to Humans. *Immunity*. 2013;38:1092–104. doi:  
297 10.1016/j.immuni.2013.06.009
- 298 4 Bayes-Genis A, Adler Y, De Luna AB, *et al*. Colchicine in Pericarditis. *Eur Heart J*.  
299 2017;38:1706–9. doi: 10.1093/eurheartj/ehx246
- 300 5 Ridker PM, Rifai N, Rose L, *et al*. Comparison of C-Reactive Protein and Low-Density  
301 Lipoprotein Cholesterol Levels in the Prediction of First Cardiovascular Events. *N Engl J Med*.  
302 2002;347:1557–65. doi: 10.1056/NEJMoa021993
- 303 6 Ridker PM, Everett BM, Thuren T, *et al*. Antiinflammatory Therapy with Canakinumab for  
304 Atherosclerotic Disease. *N Engl J Med*. 2017;377:1119–31. doi: 10.1056/NEJMoa1707914
- 305 7 Nidorf M, Thompson PL. Effect of Colchicine (0.5 mg Twice Daily) on High-Sensitivity C-  
306 Reactive Protein Independent of Aspirin and Atorvastatin in Patients With Stable Coronary Artery  
307 Disease. *Am J Cardiol*. 2007;99:805–7. doi: 10.1016/j.amjcard.2006.10.039
- 308 8 Ridker PM, Bhatt DL, Pradhan AD, *et al*. Inflammation and cholesterol as predictors of  
309 cardiovascular events among patients receiving statin therapy: a collaborative analysis of three  
310 randomised trials. *The Lancet*. 2023;401:1293–301. doi: 10.1016/S0140-6736(23)00215-5

- 311 9 Leung YY, Yao Hui LL, Kraus VB. Colchicine—Update on mechanisms of action and therapeutic  
312 uses. *Semin Arthritis Rheum*. 2015;45:341–50. doi: 10.1016/j.semarthrit.2015.06.013
- 313 10 Imazio M, Bobbio M, Cecchi E, *et al*. Colchicine in Addition to Conventional Therapy for Acute  
314 Pericarditis: Results of the COLchicine for acute PERicarditis (COPE) Trial. *Circulation*.  
315 2005;112:2012–6. doi: 10.1161/CIRCULATIONAHA.105.542738
- 316 11 Imazio M, Brucato A, Cemin R, *et al*. A Randomized Trial of Colchicine for Acute Pericarditis.  
317 *N Engl J Med*. 2013;369:1522–8. doi: 10.1056/NEJMoa1208536
- 318 12 Imazio M, Bobbio M, Cecchi E, *et al*. Colchicine as First-Choice Therapy for Recurrent  
319 Pericarditis: Results of the CORE (COLchicine for REcurrent pericarditis) Trial. *Arch Intern Med*.  
320 2005;165:1987. doi: 10.1001/archinte.165.17.1987
- 321 13 Imazio M, Belli R, Brucato A, *et al*. Efficacy and safety of colchicine for treatment of multiple  
322 recurrences of pericarditis (CORP-2): a multicentre, double-blind, placebo-controlled,  
323 randomised trial. *The Lancet*. 2014;383:2232–7. doi: 10.1016/S0140-6736(13)62709-9
- 324 14 Robinson PC, Terkeltaub R, Pillinger MH, *et al*. Consensus Statement Regarding the Efficacy  
325 and Safety of Long-Term Low-Dose Colchicine in Gout and Cardiovascular Disease. *Am J Med*.  
326 2022;135:32–8. doi: 10.1016/j.amjmed.2021.07.025
- 327 15 Imazio M. Medical therapy of pericarditis: tips and tricks for clinical practice. *J Cardiovasc Med*.  
328 Published Online First: 2 April 2024. doi: 10.2459/JCM.0000000000001618
- 329 16 Misawa T, Takahama M, Kozaki T, *et al*. Microtubule-driven spatial arrangement of mitochondria  
330 promotes activation of the NLRP3 inflammasome. *Nat Immunol*. 2013;14:454–60. doi:  
331 10.1038/ni.2550

- 332 17 Tardif J-C, Kouz S, Waters DD, *et al.* Efficacy and Safety of Low-Dose Colchicine after  
333 Myocardial Infarction. *N Engl J Med.* 2019;381:2497–505. doi: 10.1056/NEJMoa1912388
- 334 18 Nidorf SM, Fiolet ATL, Mosterd A, *et al.* Colchicine in Patients with Chronic Coronary Disease.  
335 *N Engl J Med.* 2020;383:1838–47. doi: 10.1056/NEJMoa2021372
- 336 19 Bouabdallaoui N, Tardif J-C, Waters DD, *et al.* Time-to-treatment initiation of colchicine and  
337 cardiovascular outcomes after myocardial infarction in the Colchicine Cardiovascular Outcomes  
338 Trial (COLCOT). *Eur Heart J.* 2020;41:4092–9. doi: 10.1093/eurheartj/ehaa659
- 339 20 Nelson K, Fuster V, Ridker PM. Low-Dose Colchicine for Secondary Prevention of Coronary  
340 Artery Disease. *J Am Coll Cardiol.* 2023;82:648–60. doi: 10.1016/j.jacc.2023.05.055
- 341 21 Kelly P, Lemmens R, Weimar C, *et al.* Long-term colchicine for the prevention of vascular  
342 recurrent events in non-cardioembolic stroke (CONVINCE): a randomised controlled trial. *The*  
343 *Lancet.* 2024;404:125–33. doi: 10.1016/S0140-6736(24)00968-1
- 344 22 Jolly SS, d'Entremont M-A, Lee SF, *et al.* Colchicine in Acute Myocardial Infarction. *N Engl J*  
345 *Med.* 2024;NEJMoa2405922. doi: 10.1056/NEJMoa2405922
- 346 23 Page MJ, McKenzie JE, Bossuyt PM, *et al.* The PRISMA 2020 statement: an updated guideline  
347 for reporting systematic reviews. *BMJ.* 2021;372:n71. doi: 10.1136/bmj.n71
- 348 24 Sterne JAC, Savović J, Page MJ, *et al.* RoB 2: a revised tool for assessing risk of bias in  
349 randomised trials. *BMJ.* 2019;366:14898. doi: 10.1136/bmj.14898
- 350 25 Higgins JPT, Altman DG, Gotzsche PC, *et al.* The Cochrane Collaboration's tool for assessing  
351 risk of bias in randomised trials. *BMJ.* 2011;343:d5928–d5928. doi: 10.1136/bmj.d5928



- 352 26 Psaltis PJ, Nguyen MT, Singh K, *et al.* Optical coherence tomography assessment of the impact  
353 of colchicine on non-culprit coronary plaque composition after myocardial infarction. *Cardiovasc*  
354 *Res.* 2024;cvae191. doi: 10.1093/cvr/cvae191
- 355 27 Radwan MA. Colchicine for Preserving Left Ventricular Systolic Function in Patients With  
356 STEMI Following Successful Primary PCI: A Speckle-Tracking Echocardiography Study. *Iran*  
357 *Heart J.* 2024;25:84–95.
- 358 28 Akrami M, Izadpanah P, Bazrafshan M, *et al.* Effects of colchicine on major adverse cardiac  
359 events in next 6-month period after acute coronary syndrome occurrence; a randomized placebo-  
360 control trial. *BMC Cardiovasc Disord.* 2021;21:583. doi: 10.1186/s12872-021-02393-9
- 361 29 Tong DC, Quinn S, Nasis A, *et al.* Colchicine in Patients With Acute Coronary Syndrome: The  
362 Australian COPS Randomized Clinical Trial. *Circulation.* 2020;142:1890–900. doi:  
363 10.1161/CIRCULATIONAHA.120.050771
- 364 30 Nidorf SM, Eikelboom JW, Budgeon CA, *et al.* Low-Dose Colchicine for Secondary Prevention  
365 of Cardiovascular Disease. *J Am Coll Cardiol.* 2013;61:404–10. doi: 10.1016/j.jacc.2012.10.027
- 366 31 Deftereos S, Giannopoulos G, Raisakis K, *et al.* Colchicine Treatment for the Prevention of Bare-  
367 Metal Stent Restenosis in Diabetic Patients. *J Am Coll Cardiol.* 2013;61:1679–85. doi:  
368 10.1016/j.jacc.2013.01.055
- 369 32 Tong DC, Bloom JE, Quinn S, *et al.* Colchicine in Patients With Acute Coronary Syndrome: Two-  
370 Year Follow-Up of the Australian COPS Randomized Clinical Trial. *Circulation.* 2021;144:1584–  
371 6. doi: 10.1161/CIRCULATIONAHA.121.054610
- 372 33 Fiolet ATL, Opstal TSJ, Mosterd A, *et al.* Efficacy and safety of low-dose colchicine in patients  
373 with coronary disease: a systematic review and meta-analysis of randomized trials. *Eur Heart J.*  
374 2021;42:2765–75. doi: 10.1093/eurheartj/ehab115

- 375 34 Fiolet ATL, Poorthuis MHF, Opstal TSJ, *et al.* Colchicine for secondary prevention of ischaemic  
376 stroke and atherosclerotic events: a meta-analysis of randomised trials. *eClinicalMedicine*.  
377 2024;76:102835. doi: 10.1016/j.eclinm.2024.102835
- 378 35 Virani SS, Newby LK, Arnold SV, *et al.* 2023 AHA/ACC/ACCP/ASPC/NLA/PCNA Guideline  
379 for the Management of Patients With Chronic Coronary Disease: A Report of the American Heart  
380 Association/American College of Cardiology Joint Committee on Clinical Practice Guidelines.  
381 *Circulation*. 2023;148. doi: 10.1161/CIR.0000000000001168
- 382 36 Bernhard D, Csordas A, Henderson B, *et al.* Cigarette smoke metal-catalyzed protein oxidation  
383 leads to vascular endothelial cell contraction by depolymerization of microtubules. *FASEB J*.  
384 2005;19:1096–107. doi: 10.1096/fj.04-3192com
- 385 37 Andreis A, Imazio M, Avondo S, *et al.* Adverse events of colchicine for cardiovascular diseases:  
386 a comprehensive meta-analysis of 14 188 patients from 21 randomized controlled trials. *J*  
387 *Cardiovasc Med*. 2021;22:637–44. doi: 10.2459/JCM.0000000000001157
- 388 38 Opstal TSJ, Nidorf SM, Fiolet ATL, *et al.* Drivers of mortality in patients with chronic coronary  
389 disease in the low-dose colchicine 2 trial. *Int J Cardiol*. 2023;372:1–5. doi:  
390 10.1016/j.ijcard.2022.12.026
- 391 39 Ridker PM. The Time to Initiate Anti-Inflammatory Therapy for Patients With Chronic Coronary  
392 Atherosclerosis Has Arrived. *Circulation*. 2023;148:1071–3. doi:  
393 10.1161/CIRCULATIONAHA.123.066510
- 394 40 Vrints C, Andreotti F, Koskinas KC, *et al.* 2024 ESC Guidelines for the management of chronic  
395 coronary syndromes. *Eur Heart J*. 2024;45:3415–537. doi: 10.1093/eurheartj/ehae177
- 396 41 Visseren FLJ, Mach F, Smulders YM, *et al.* 2021 ESC Guidelines on cardiovascular disease  
397 prevention in clinical practice. *Eur Heart J*. 2021;42:3227–337. doi: 10.1093/eurheartj/ehab484



399 **Tables**

400 **Table 1: Key features of randomized trials included in this meta-analysis**

Study	Year	Inclusion criteria	Intervention	Placebo-controlled	Number of patients		Months of follow-up (median)
					Intervention group	Control group	
CONVINCE[21]	2024	Patients aged at least 40 years, with non-severe ischaemic stroke or high-risk transient ischaemic attack	Colchicine 0.5 mg daily	No	1569	1575	34
CLEAR[22]	2024	Patients aged $\geq 18$ with STEMI and those with NSTEMI plus risk factors	Colchicine 0.5 mg daily <sup>a</sup>	Yes	3528	3534	36
COCOMO-ACS[26]	2024	Age 18-82 years, with a coronary angiogram within 72 hours of NSTEMI diagnosis	Colchicine 0.5 mg daily	Yes	30	31	18

Radwan et al.[27]	2024	STEMI patients with successful primary PCI	Colchicine 0.5 mg daily	No	100	100	6
COPS[29]	2021	Patients aged 18-85 with ACS	Colchicine 0.5 mg twice daily for 30 days, <sup>b</sup> followed by 0.5 mg once daily for 11 months	Yes	396	399	24 [32]‡
Akrami et al.[28]	2021	Patients aged 40-70 years, with ACS	Colchicine 0.5 mg daily	Yes	120	129	6
LoDoCo2[18]	2020	Age 35-85 years, with proven coronary artery disease (proven by either angiography or non-invasive imaging, or CAC $\geq$ 400) with minimum 6-month clinical stability	Colchicine 0.5 mg daily after a 30-day run-in phase	Yes	2762	2760	29
COLCOT[17]	2019	Patients aged $\geq$ 18, with MI in the 30	Colchicine 0.5 mg daily	Yes	2366	2379	22.6

		days prior to enrolment, with completion of planned percutaneous revascularization procedures					
LoDoCo[30]	2013	Age 35-85 years, angiographically proven coronary disease with minimum 6-month clinical stability	Colchicine 0.5 mg daily	No	282	250	36
Deftereos et al.[31]	2013	Diabetic patients aged 40-80 years, undergoing PCI	Colchicine 0.5 mg twice daily	Yes	112	110	6

401 <sup>a</sup> Dose changed after interim analysis showed higher-then-expected discontinuation; <sup>b</sup> Dose reduction

402 allowed according to patients' tolerance.

403 ‡ = MACE outcome data based on pre-specified extended follow-up.

404 ACS = acute coronary syndrome; PCI = percutaneous coronary intervention.

405 **Table 2. Demographics**

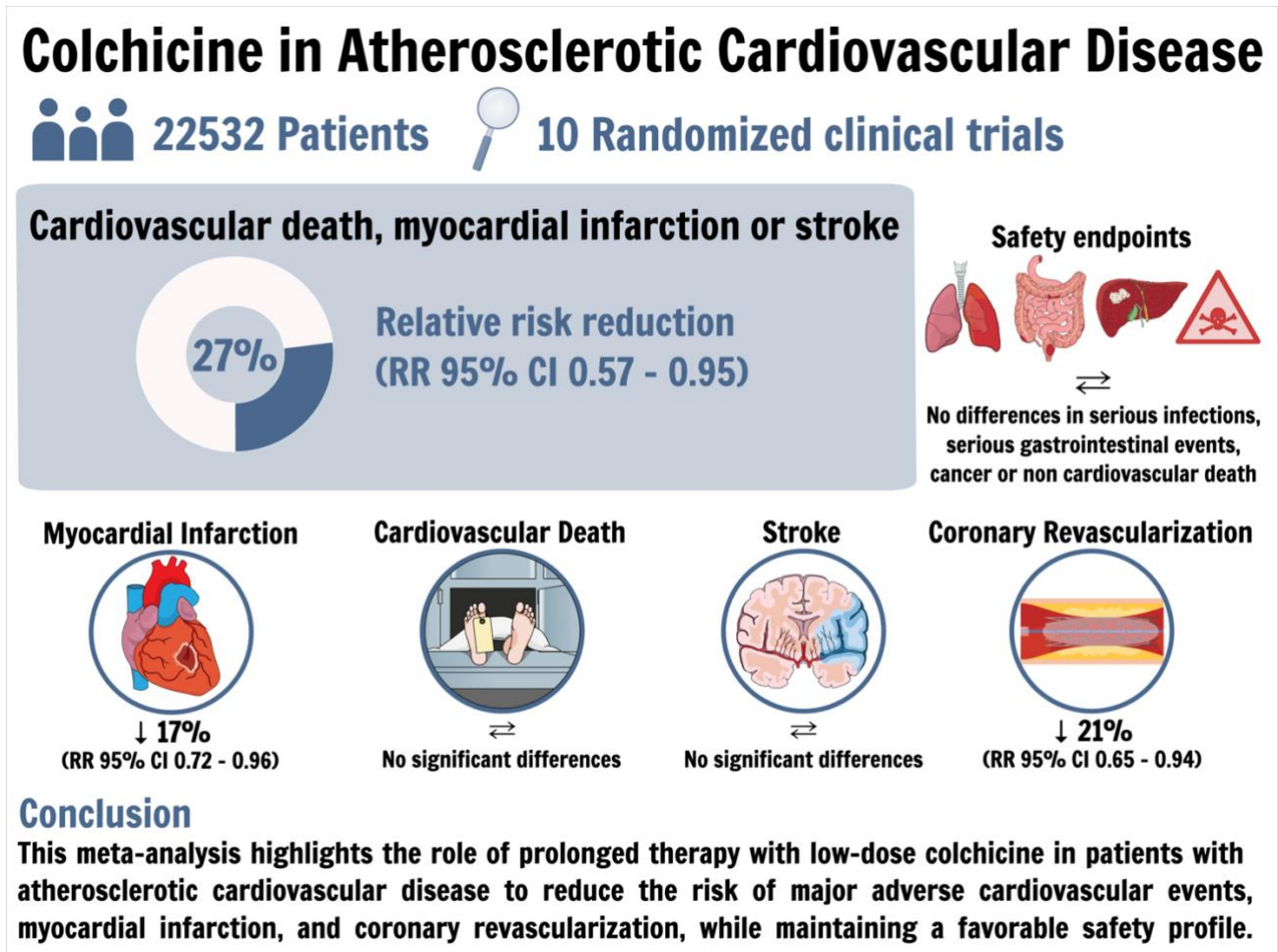
Study	Year	Total number of patients	Age (Mean ± SD)	Female (%)	Diabetes (%)	Active smoker (%)	Hypertension (%)	Prior CAD (%)	Prior stroke (%)
CONVINCE [21]	2024	3144	66.3 ± 10	30.31	22.3	22.07	65.43	8.9	10.5
CLEAR [22]	2024	7062	60.7 ± 10.3	20.4	18.5	40.8	45.8	9 §	NA
COCOMO-ACS[26]	2024	61	62.5 ± 11.2	9.4	18.8	26.6	53.1	6.3 §	NA
Radwan et al.[27]	2024	200	55.3 ± 9.2	23.5	50.5	59	57	NA	NA
COPS[29]	2021	795	59.9 ± 10.3	20.8	19	34.8	50.3	15.1	2
Akrami et al.[28]	2021	249	56.9 ± 7.5	30.5	23.7	40.6	44.6	8.83 §	3.6
LoDoCo2[18]	2020	5522	65.8 ± 8.6	15.3	18.3	11.8	50.9	84.4	NA
COLCOT[17]	2019	4745	60.6 ± 10.7	19.2	20.2	29.9	51	16.2	2.3
LoDoCo[30]	2013	532	67 ± 9.4	11.1	30.3	11.8	NA	23.5	NA
Deftereos et al.[31]	2013	222	63.6 ± 7.0	34.7	100	37.8	49	NA	NA

406

407 § = Prior myocardial infarction; CAD = coronary artery disease

408 **Figures**

409 **Figure 1. Graphical abstract: Main findings of the meta-analysis. RR = Risk Ratio; CI =**  
410 **Confidence Interval.**

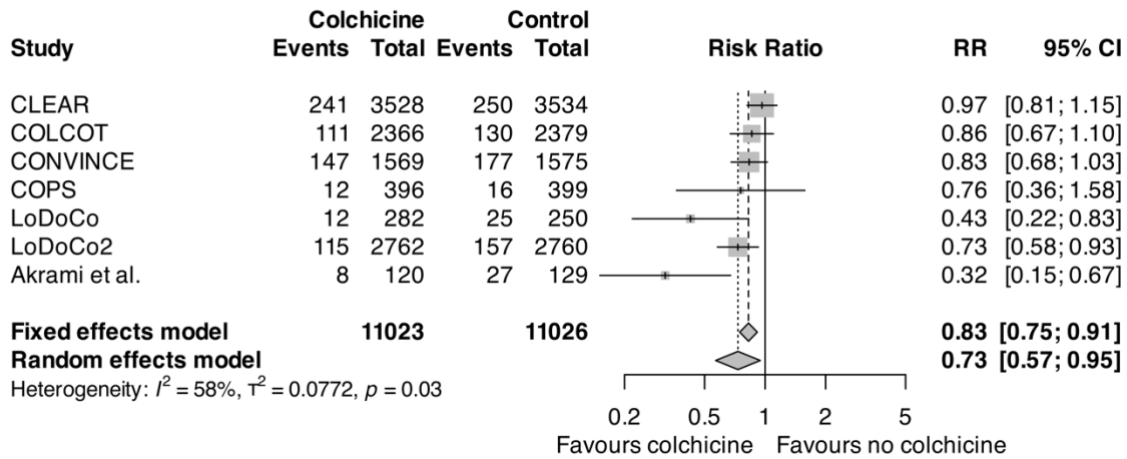


411

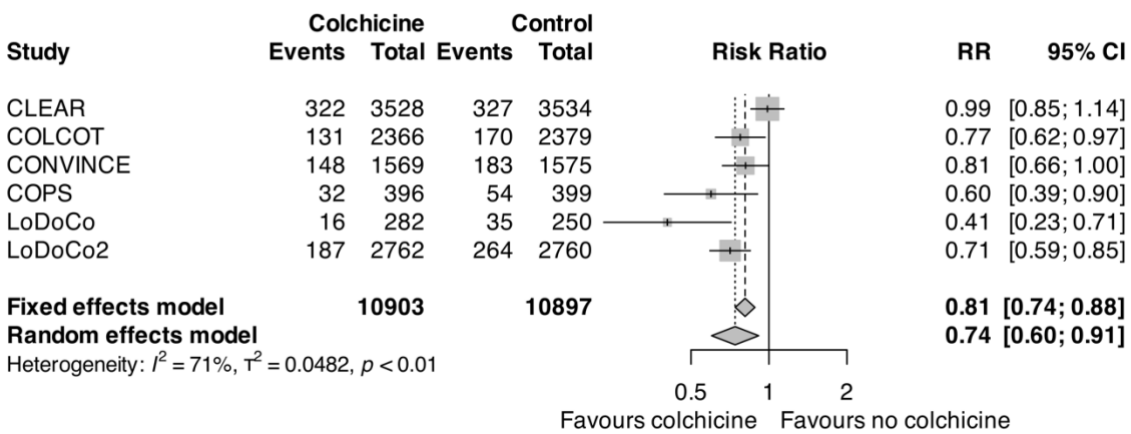


412 **Figure 2. Cardiovascular composite outcomes (MACE with and without coronary**  
 413 **revascularization) in patients treated with colchicine in addition to standard of care versus**  
 414 **standard of care alone. RR = Risk Ratio, CI = Confidence Interval.**

**Composite of Cardiovascular Death, Myocardial Infarction, and Stroke (MACE)**



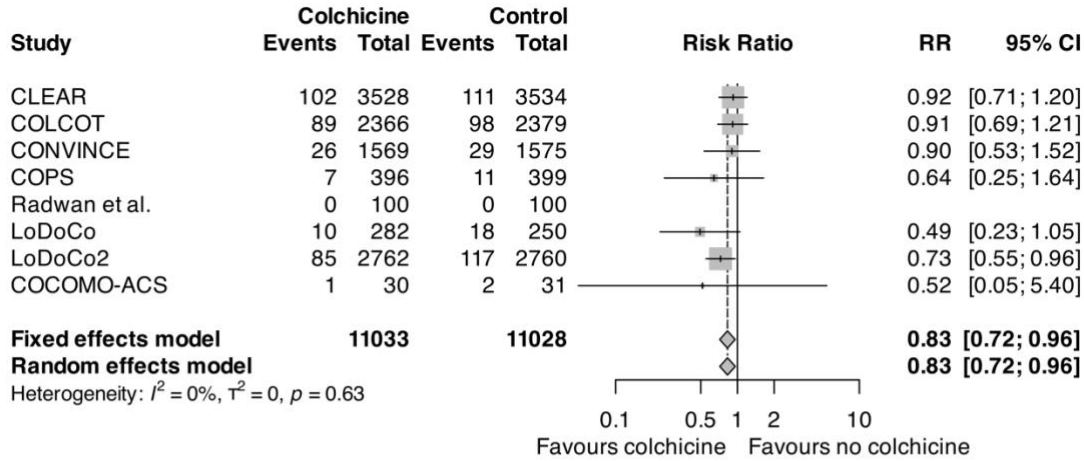
**Composite of MACE and Coronary Revascularization**



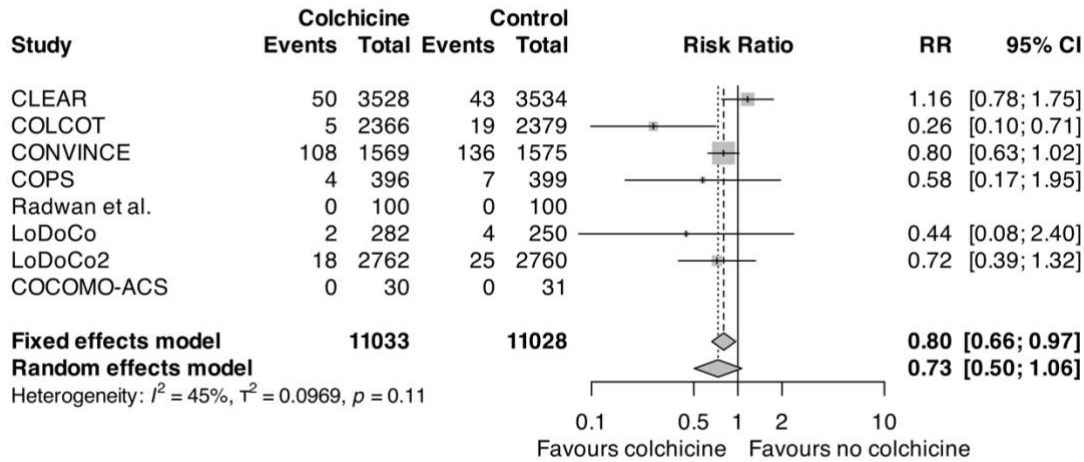
415

416 **Figure 3. Myocardial Infarction, Stroke and Coronary Revascularization in patients treated**  
 417 **with colchicine in addition to standard of care versus standard of care alone. RR = Risk Ratio,**  
 418 **CI = Confidence Interval.**

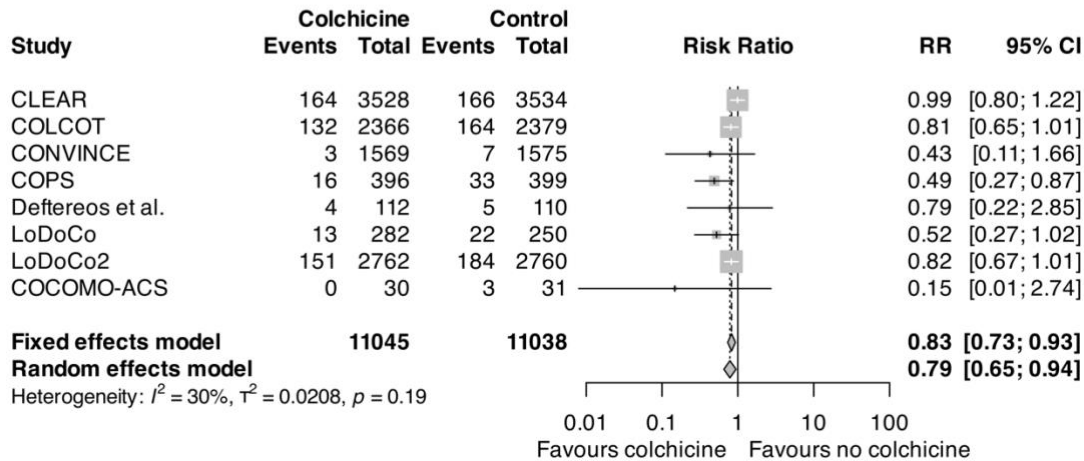
**Myocardial Infarction**



**Stroke**

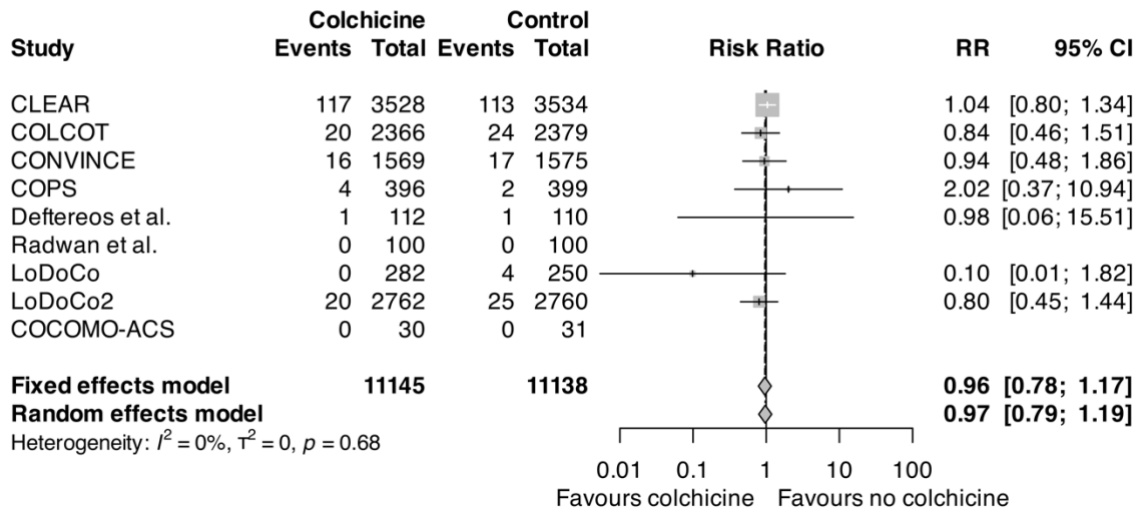


**Coronary Revascularization**



420 **Figure 4. Death in patients treated with colchicine in addition to standard of care versus**  
421 **standard of care alone. RR = Risk Ratio, CI = Confidence Interval.**

**Cardiovascular Death**



**Non-Cardiovascular Death**

