

1 **Prevalence of chlamydia, gonorrhoea, and trichomoniasis among male and female**
2 **general populations in sub-Saharan Africa from 2000-2024: A systematic review and**
3 **meta-regression analysis**

4
5 Julia Michalow^{1*}, Lauren Hall¹, Jane Rowley PhD², Rebecca L. Anderson¹, Quinton Hayre³, R.
6 Matthew Chico PhD⁴, Olanrewaju Edun¹, Jesse Knight PhD¹, Salome Kuchukhidze PhD³, Evidence
7 Majaya⁵, Domonique M. Reed PhD³, Oliver Stevens¹, Magdalene K Walters¹, Remco PH Peters
8 PhD², Anne Cori PhD¹, Prof Marie-Claude Boily PhD¹, Jeffrey W. Imai-Eaton PhD^{1,3}

9 ¹ MRC Centre for Global Infectious Disease Analysis, School of Public Health, Imperial College
10 London, London, United Kingdom

11 ² Department of Global HIV, Hepatitis and Sexually Transmitted Infections Programmes, World
12 Health Organization, Geneva, Switzerland

13 ³ Center for Communicable Disease Dynamics, Department of Epidemiology, Harvard T.H.
14 Chan School of Public Health, Boston, Massachusetts, USA

15 ⁴ Department of Disease Control, Faculty of Infectious and Tropical Diseases, London School of
16 Hygiene & Tropical Medicine, London, United Kingdom

17 ⁵ Centre for Infectious Disease Epidemiology and Research, School of Public Health and Family
18 Medicine, University of Cape Town, Cape Town, South Africa

19
20 * Corresponding author: Julia Michalow (j.michalow21@imperial.ac.uk)

21 **Abstract**

22 **Background:** Sub-Saharan Africa (SSA) has the highest sexually transmitted infection (STI)
23 prevalence globally, but information about trends and geographic variation is limited by sparse
24 aetiologic studies, particularly among men. This systematic review assessed chlamydia,
25 gonorrhoea, and trichomoniasis prevalence by sex, sub-region, and year, and estimated male-to-
26 female prevalence ratios for SSA.

27 **Methods:** We searched Embase, MEDLINE, Global Health, PubMed, and African Index Medicus
28 for studies measuring STI prevalence among general populations from January 1, 2000, to
29 September 17, 2024. We adjusted observations for diagnostic test performance and used log-
30 binomial mixed-effects meta-regressions to estimate prevalence trends and sex-prevalence
31 ratios.

32 **Findings:** Of 5202 records identified, we included 211 studies from 28 countries. In 2020,
33 estimated prevalence among 15-49-year-olds in SSA for chlamydia was 6.6% (95%CI: 5.0-8.2%,
34 n=169 observations) among females and 4.7% (3.4-6.1%, n=33) among males, gonorrhoea was
35 2.4% (1.4-3.3%, n=171) and 1.7% (0.7-2.6%, n=31), and trichomoniasis was 6.8% (3.6-9.9%,
36 n=188) and 1.7% (0.7-2.7%, n=19). Male-to-female ratio estimates were 0.61 (0.53-0.71) for
37 chlamydia, 0.81 (0.61-1.09) for gonorrhoea, and 0.23 (0.18-0.28) for trichomoniasis. From 2010-
38 2020, chlamydia prevalence increased by 34.5% (11.1-62.9%) in SSA, while gonorrhoea and
39 trichomoniasis trends were not statistically significant. Chlamydia and gonorrhoea prevalence
40 were highest in Southern and Eastern Africa, whereas trichomoniasis was similar across sub-
41 regions.

42 **Interpretation:** SSA has a high, geographically varied STI burden, with increasing prevalence of
43 chlamydia. Region-specific sex-prevalence ratios differed from existing global ratios and should
44 be considered in future burden estimates. Enhanced sex-stratified surveillance is crucial to guide
45 national programmes and reduce STI prevalence in SSA.

46 **Funding:** Gates Foundation, Imperial College London, NIH, UKRI

47 **Background**

48 The World Health Organization (WHO) has established targets to reduce the incidence of sexually
49 transmitted infections (STIs) by 2030.¹ Achieving these targets requires ambitious scale-up of
50 national STI prevention and control programmes, particularly in sub-Saharan Africa (SSA) where
51 STI prevalence is highest globally.¹ However, monitoring and optimising these programmes is
52 challenging due to high rates of asymptomatic infection, variable health-seeking behaviour,
53 limited diagnostic capacity necessitating syndromic management, and weak surveillance
54 systems.² STI prevalence estimates are crucial for evaluating progress toward WHO targets but
55 are hindered by infrequent population-representative studies, especially among men.³

56 Estimates of curable STI prevalence in SSA are limited. WHO publishes global and regional
57 prevalence and incidence estimates for curable STIs, including chlamydia (*Chlamydia*
58 *trachomatis*, CT), gonorrhoea (*Neisseria gonorrhoeae*, NG), and trichomoniasis (*Trichomonas*
59 *vaginalis*, TV), approximately every four years.⁴⁻⁹ These focus on global geographic regions and do
60 not report sub-regional variation or temporal trends. The Global Burden of Disease (GBD) study
61 generates global, regional, and national prevalence and incidence trends for several STIs.¹⁰ Both
62 estimation approaches depend heavily on available data and underlying model assumptions.
63 Due to limited data among men, WHO and GBD have derived male-to-female prevalence ratios
64 from global data and applied these in most regions to support male prevalence estimates.^{5,8,10}
65 Although WHO reviews its global ratios prior to each estimation round, values have not been
66 updated since 1999 for trichomoniasis and 2005 for chlamydia and gonorrhoea.^{5,8} Additionally,
67 several systematic reviews have assessed the prevalence of curable STIs in SSA sub-regions
68 among pregnant women,^{11,12} women participating in HIV prevention trials,¹³ or women living with
69 HIV,¹⁴ but their generalisability beyond the specified populations is limited and these reviews
70 have not examined changes in STI prevalence over time.

71 We therefore conducted a systematic review of studies on chlamydia, gonorrhoea, and
72 trichomoniasis prevalence among adults considered representative of the general population
73 (i.e. not conducted among groups identified as key populations, as defined in WHO guidelines on
74 HIV, STIs, and viral hepatitis¹) in SSA from 2000 to 2024. We performed meta-analyses to assess
75 variations in STI prevalence by sex, sub-region, and over time. To inform future regional and global
76 STI burden estimation efforts, we derived updated male-to-female prevalence ratios specific to
77 SSA.

78 **Methods**

79 *Search strategy*

80 We systematically searched Embase (Ovid), MEDLINE (Ovid), Global Health (Ovid), PubMed, and
81 African Index Medicus from 1 January 2000 to 17 September 2024 for studies assessing the
82 prevalence of chlamydia, gonorrhoea, and trichomoniasis in SSA. Search term domains included
83 relevant terms and synonyms for “sexually transmitted infections” and “sub-Saharan Africa”
84 (Table S1). We also searched citations from relevant published systematic reviews.^{7-9,11-20}

85 *Eligibility criteria and study selection*

86 We included studies reporting sex-stratified empirical data on the prevalence of chlamydia,
87 gonorrhoea, or trichomoniasis among adults from the general population in SSA between 2000
88 and 2024. We considered studies to represent the general population if they enrolled participants
89 from antenatal care (ANC), family planning, or gynaecology clinics; primary healthcare or other
90 outpatient services; educational institutions; or community venues (e.g., social spaces or places
91 of worship); or recruited participants for HIV or STI prevention trials (baseline data only) or
92 population-representative surveys. We excluded studies if participants sought treatment for STI
93 symptoms or infertility or were enrolled exclusively from populations living with HIV or key
94 populations.

95 We included studies with participants aged 12 years or older who were tested using
96 internationally recognised aetiological diagnostic tests with urogenital specimens (urine, urethral,
97 or cervicovaginal samples), and excluded studies that only collected pharyngeal or rectal
98 samples. We also excluded case reports, commentaries, longitudinal and randomised controlled
99 studies reporting only post-baseline outcomes, and studies with fewer than 15 participants. We
100 used the UN M49 standard to define SSA and its sub-regions (Table S2).²¹

101 Search results were managed and de-duplicated using Covidence systematic review software
102 (Veritas Health Innovation, Melbourne, Australia).²² Researchers (DMR, EM, JM, JWI-E, JK, LH,
103 MKW, OE, OS, QH, RLA, SK) independently double-screened title and abstract records for
104 eligibility and assessed full text articles for inclusion. A third reviewer resolved discrepancies.

105 *Data extraction*

106 Researchers (JM, LH, RLA, QH) independently double-extracted prevalence observations
107 (number of individuals with a positive result of the total number tested) for each study with
108 stratification by country, sex, and population group, as available. We also recorded information
109 on study characteristics, participant characteristics, and diagnostic methodology (Table S3).
110 Discrepancies were resolved through consensus.

111 If outcomes from the same study were reported in multiple articles, we preferentially extracted
112 observations from the largest sample or, if samples were the same size, the first published article.
113 For studies collecting samples from multiple anatomical sites, we extracted only urogenital
114 results. If multiple diagnostic tests were conducted, we extracted outcomes from the test and
115 sample type with highest sensitivity and specificity for pathogen identification (Table S4). We
116 preferentially extracted non-stratified rather than HIV-stratified outcomes, if both were reported.

117 *Data analysis*

118 We adjusted study prevalence estimates to account for imperfect diagnostic test sensitivity and
119 specificity, using a previously described Bayesian approach.²³ Sensitivity and specificity values
120 for each test category were collated from published literature, with preference for characteristics
121 published by the WHO (Table S4).^{5,23,24}

122 For studies that did not report data collection dates (n=26), we imputed the midpoint year of data
123 collection by subtracting the median publication lag from the publication year (three years, based
124 on the difference between the data collection midpoint year and year of publication among
125 studies with dates reported). For one study spanning multiple sub-regions without country- or

126 region-specific data reported,²⁵ we classified the study sub-region according to where most
127 participants had been recruited.

128 To estimate sub-regional trends in sex-specific STI prevalence in SSA, we fit log-binomial mixed-
129 effects meta-regressions for each pathogen. Fixed effects included year (midpoint of data
130 collection), study population (ANC attendees, family planning clinic attendees, gynaecology
131 clinic attendees, primary healthcare or other outpatient facility attendees, students, community
132 members recruited from non-clinical venues, HIV/STI prevention trial participants, and
133 population-representative survey participants), sex (female, male), age group (younger adults 12–
134 25 years, all adults ≥ 12 years), HIV status (HIV negative, non-stratified HIV status), diagnostic test
135 (nucleic acid amplification test [NAAT], culture, direct fluorescent antibody, enzyme
136 immunosorbent assay, rapid antigen test, wet mount), sub-region (Western and Central Africa
137 [WCA], Eastern Africa [EA], or Southern Africa [SA]), year and sub-region interaction term, and sex
138 and sub-region interaction term. A year and sex interaction term was not included due to limited
139 observations of male prevalence. We combined Western and Central Africa due to limited
140 prevalence observations in Central Africa. Study-level random intercepts allowed for between-
141 study heterogeneity. Fitted models were used to predict the prevalence of each infection among
142 male and female adults by sub-region between 2000 and 2024, using reference categories for
143 covariates in the model (study population: ANC attendees, HIV status: non-stratified, diagnostic
144 test: NAAT). We report estimates for sub-regions and all of SSA for 2020. SSA estimates were
145 obtained by weighting sub-regional predictions with sex-matched population size for adults aged
146 15-49 years in 2020, according to UN World Population Prospects 2024.²⁶ Standard errors were
147 determined using the delta method.²⁷

148 To assess sex differences in prevalence, we estimated male-to-female prevalence ratios using
149 observations from all studies (between-study ratios) and for the subset of studies providing
150 estimates for both sexes (within-study ratios). We estimated between-study ratios using
151 previously described meta-regression models. We determined within-study ratios using the
152 same meta-regression approach, but without fixed effects for population group and an
153 interaction term for sex and sub-region, due to limited observations. We also derived pooled
154 within-study ratios without adjusting for any covariates.

155 We assessed sensitivity of prevalence estimates, trends, and male-to-female prevalence-ratios
156 to adjustments for diagnostic performance by comparing results from models using all available
157 observations versus only NAAT-diagnosed observations, with and without accounting for test
158 sensitivity and specificity. Unless indicated otherwise, all main results reflect observations
159 adjusted for diagnostic test performance. Results are presented as means with 95% confidence
160 intervals (95% CIs). Model coefficients are presented as adjusted prevalence ratios (aPRs), with
161 confidence intervals calculated on the log scale prior to exponentiation. Analyses were
162 conducted in R version 4.2.3; Bayesian diagnostic test performance adjustments used rstan
163 version 2.26.21²⁸ and meta-regression modelling used glmmTMB version 1.1.8.²⁹

164 We pre-registered our study with PROSPERO (CRD: 42023420384)³⁰ and reported according to
165 the Preferred Reporting Items for Systematic Reviews and Meta-Analyses (PRISMA) guideline.³¹
166 The Imperial College Research Ethics Committee approved analysis of secondary data for this
167 study (ICREC #6365329).

168 Results

169 Search results and scope

170 We identified 11,136 records through the database search, of which 5,934 were duplicates and
171 5,202 were screened (Figure 1). Of these, 783 full-text articles were assessed and 301 met
172 eligibility criteria. After adding 11 articles identified through citation searching and excluding 98
173 articles with duplicate study observations, we included 214 articles from 211 unique studies,
174 from which we extracted 614 prevalence observations (NG=203, CT=203, TV=208; Table S5). Most
175 studies were in Eastern Africa (N=90/211, 42.7%), followed by Western and Central (N=71/211,
176 33.6%), and Southern (N=59/211, 28.0%) Africa (Table 1). Studies were conducted in 28 different
177 sub-Saharan African countries, with most in South Africa (N=53/211, 25.1%), Nigeria (N=38/211,
178 18.0%), Kenya (N=26/211, 12.3%), Tanzania (N=20/211, 9.5%), and Uganda (N=19/211, 9.0%)
179 (Figure S1). Study populations were predominantly ANC attendees (N=85/211, 40.3%), primary
180 healthcare or outpatient department attendees (N=30/211, 14.2%), and HIV/STI prevention trial
181 participants (N=24/211, 11.4%). Few studies were among population-representative survey
182 samples (N=11/211, 5.2%). Most studies were solely among females (N=174/211, 82.5%). A
183 limited number included both sexes (N=29/211, 13.7%) or males only (N=8/211, 3.8%). Studies
184 were predominantly among all adults (N=180/211, 85.3%), rather than restricted to younger
185 adults (N=31/211, 14.6%). Across all studies, most enrolled within the 15-49-year age range
186 (N=109/211, 51.7%), while others included younger and/or older participants (N=45/211, 21.3%),
187 reported only a minimum adult age (N=37/211, 17.5%), or did not report age ranges (N=20/211,
188 9.5%).

189 Sexually transmitted infection prevalence

190 In 2020, estimated prevalence of chlamydia in SSA was 6.6% (95%CI: 5.0-8.2%, number of
191 observations (n)=169) among females and 4.7% (3.4-6.1%, n=33) among males, gonorrhoea was
192 2.4% (1.4-3.3%, n=171) and 1.7% (0.7-2.6%, n=31), and trichomoniasis was 6.8% (3.6-9.9%,
193 n=188) and 1.7% (0.7-2.7%, n=19), respectively (Figure 2A). From 2010 to 2020, chlamydia
194 prevalence increased by 34.5% (11.1-62.9%) in SSA, while trends for gonorrhoea (3.3% increase
195 [-20.2-33.9%]) and trichomoniasis (17.8% increase [-3.8-34.9%]) were not statistically significant
196 (Table 2, Figure 2B).

197 Sub-regional variations in prevalence were similar for chlamydia and gonorrhoea (Table 2, Figure
198 2A). Among females, relative to Southern Africa, the prevalence of chlamydia and gonorrhoea
199 were lowest in Western and Central Africa (aPR_{CT}: 0.31 [0.22-0.43], aPR_{NG}: 0.36 [0.23-0.57]),
200 followed by Eastern Africa (aPR_{CT}: 0.38 [0.35-0.41], aPR_{NG}: 0.64 [0.56-0.74]). Similarly for males,
201 prevalence was lower in Western and Central (aPR_{CT}: 0.38 [0.32-0.46], aPR_{NG}: 0.58 [0.44-0.78])
202 and Eastern Africa (aPR_{CT}: 0.32 [0.19-0.53], aPR_{NG}: 0.50 [0.23-1.10]) compared to Southern Africa.
203 For trichomoniasis, female prevalence was similar across sub-regions (WCA aPR_{TV}: 0.94 [0.68-
204 1.31], EA aPR_{TV}: 1.01 [0.85-1.21]), while male prevalence was higher in Eastern (aPR_{TV}: 2.45 [1.66-
205 3.61]) than Southern Africa.

206 Time trends for each infection varied across sub-regions. Chlamydia prevalence increased in
207 Eastern (aPR_{CT} per year: 1.07 [1.05-1.09]) and Southern Africa (aPR_{CT}: 1.02 [1.00-1.04]), while
208 trichomoniasis prevalence decreased in Southern Africa (aPR_{TV}: 0.96 [0.92-0.99]) only.
209 Gonorrhoea prevalence was stable across all three sub-regions (Table 2, Figure 2B).

210 Across study populations, there was no evidence that the prevalence of any infection differed
211 compared to ANC attendees, except for lower trichomoniasis prevalence among family planning
212 clinic attendees (aPR: 0.54 [0.32-0.90]). Studies diagnosing chlamydia with a rapid antigen test
213 (aPR_{CT}: 2.94 [1.76-4.92]), gonorrhoea with culture (aPR_{NG}: 1.60 [1.00-2.54]), and trichomoniasis
214 with wet mount (aPR_{TV}: 1.61 [1.14-2.29]) had higher prevalence than those that used NAAT, after
215 accounting for diagnostic test performance (Table 2).

216 *Male-to-female prevalence ratio estimates*

217 In SSA, male-to-female prevalence ratio estimates for each infection were similar when
218 estimated using adjusted between-study ratios (all available data), adjusted within-study ratios
219 (paired data), or unadjusted pooled within-study ratios (Figure 3, Table 2, Table S6). Male-to-
220 female prevalence ratio estimates (adjusted between-study) for SSA in 2020 were 0.61 (0.53-
221 0.71) for chlamydia, 0.81 (0.61-1.09) for gonorrhoea, and 0.23 (0.18-0.28) for trichomoniasis
222 (Figure 3, Table 2). Between-study prevalence ratios were consistent across sub-regions for
223 chlamydia (WCA:0.63 [0.43-0.93], EA:0.61 [0.53-0.70], SA:0.61 [0.55-0.66]), but varied for
224 gonorrhoea (WCA:1.05 [0.54-2.04], EA:0.69 [0.56-0.85], SA:0.76 [0.65-0.90]) and trichomoniasis
225 (WCA:0.14 [0.09-0.20], EA:0.36 [0.30-0.44], SA:0.15 [0.11-0.20]; Table 2).

226 *Sensitivity analyses of diagnostic test performance*

227 Prevalence estimates in 2020 were consistent for all three infections when derived using all
228 available or NAAT-only observations, with or without accounting for diagnostic test performance
229 (Table 2, Table S7-S9, Figure S2). Temporal trends for chlamydia and gonorrhoea also remained
230 consistent across sub-regions. However, for trichomoniasis, all-observation models showed a
231 prevalence decline in Southern Africa (aPR: 0.96 [0.92-0.99] with and without test performance),
232 while NAAT-only models did not (with test performance: 0.96 [0.90-1.02]; without: 0.96 [0.92-
233 1.01]; Table 2, Table S7-S9, Figure S3). Between-study and within-study male-to-female
234 prevalence ratios were consistent for all three infections, whether derived using all available or
235 NAAT-only observations. However, accounting for test performance led to higher ratios for
236 gonorrhoea and lower ratios for chlamydia and trichomoniasis (Table 2, Table S7-S9, Figure S4).

237 **Discussion**

238 Our analysis estimated the prevalence of chlamydia, gonorrhoea and trichomoniasis among
239 general populations in SSA between 2000 and 2024. We estimated a higher burden of curable
240 STIs among females (6.9% chlamydia, 1.8% gonorrhoea, and 7.6% trichomoniasis in 2020) than
241 males (4.2%, 1.5%, and 1.7% respectively), which exceeded global prevalence estimates (3.2%,
242 0.7%, and 2.7% for both sexes in 2020, respectively).⁹ Geographic variation was substantial;
243 prevalence of chlamydia and gonorrhoea was highest in Southern Africa, followed by Eastern
244 Africa and then Western and Central Africa. Trichomoniasis prevalence was similar across sub-
245 regions for females but was highest in Eastern Africa for males. The prevalence of chlamydia
246 increased considerably in Eastern and Southern Africa over the study period, while gonorrhoea
247 was stable, and trichomoniasis decreased in Southern Africa.

248 Our central estimates of STI prevalence in 2020 differed from those reported by WHO for the
249 African region and GBD for SSA.^{9,10} For females, our estimates were higher for chlamydia (6.9%
250 vs. WHO:5.5%, GBD:4.5%), similar for gonorrhoea (1.8% vs. WHO:1.6%, GBD:1.7%), and lower

251 for trichomoniasis (7.6% vs. WHO:12.0%, GBD:12.6%). For males, our estimates were higher for
252 chlamydia (4.2% vs. WHO:4.0%, GBD:2.5%), gonorrhoea (1.5% vs. WHO:1.2%, GBD:1.2%), and
253 trichomoniasis (1.7% vs. WHO:1.3%, GBD:1.5%).^{9,10} These differences reflect our broader study
254 inclusion criteria, incorporation of more recent studies, and analysis of temporal trends to reflect
255 sub-regional changes in prevalence. Compared to existing global male-to-female prevalence
256 ratios, our SSA ratio estimates were lower for chlamydia (WHO: 0.80 and GBD: 0.91), and
257 intermediate for gonorrhoea (WHO: 0.86 and GBD: 0.71) and trichomoniasis (WHO: 0.10 and
258 GBD: 0.25; Figure 3).^{5,8,10} Although our analysis indicated sub-regional ratio variation, data
259 limitations precluded more detailed exploration. Given these differences, future estimation
260 exercises should prioritise using region-specific ratios to capture local epidemiologic
261 differences, although sparse male prevalence data can hinder ratio estimation.

262 The spatial distribution of chlamydia and gonorrhoea prevalence mirror that of HIV prevalence in
263 SSA, characterised by highest burden in Southern Africa, followed by Eastern Africa, and lowest
264 in Western and Central Africa.³² This is likely due to shared behavioural risk factors and biological
265 synergies that facilitate co-infection.³³ Despite evidence suggesting that trichomoniasis
266 increases HIV transmission and acquisition risk,³⁴ prevalence variations were not observed
267 across sub-regions. This could reflect limitations in study availability and diagnostics, missing
268 covariates, or incomplete adjustment for covariates such as age.³⁵ Greater integration of STI and
269 HIV services remains important for their effective mitigation in high-burden areas.¹

270 The increasing prevalence of chlamydia in Eastern and Southern Africa and decreasing
271 prevalence of trichomoniasis in Southern Africa have not been documented previously. Previous
272 STI burden assessments reported stable prevalence over time for chlamydia and gonorrhoea in
273 Kenya and South Africa^{36,37} or did not estimate time trends for curable STIs in SSA.^{8,11-14} For
274 chlamydia, increases in prevalence are particularly concerning given the severe, long-term health
275 consequences of untreated infection, including chronic pelvic pain, infertility, ectopic pregnancy,
276 and other adverse pregnancy outcomes, along with an increased risk of HIV transmission.¹ For
277 trichomoniasis, declines in prevalence warrant cautious interpretation. Our trend estimates were
278 sensitive to the diagnostic tests included, due to more widespread use of NAAT rather than wet
279 mount microscopy in recent studies.

280 Our analysis was primarily limited by sparse and heterogenous data. Our systematic search
281 identified only 211 studies in 28 of 48 SSA countries. There were particularly few studies in Central
282 Africa (12 studies in 6 countries) and among men (37 studies in 15 countries). We were therefore
283 unable to generate estimates specific to Central Africa or to determine whether temporal
284 prevalence trends differed by sex. Our estimates for Southern Africa relied predominantly on
285 studies conducted in South Africa (51 of 59 studies in the sub-region), which limited our ability to
286 assess the representativeness of both these studies and our estimates for the broader sub-
287 region.

288 Limitations related to study representativeness and reporting, and adjustments made in our
289 analysis, may have influenced our estimates. Given the lack of population-representative
290 studies, we used ANC attendees as the reference category for our prevalence estimates. At least
291 65% of studies focused exclusively on sexually active individuals, including antenatal, family
292 planning, and gynaecology clinic attendees, and HIV/STI prevention trial participants. We

293 considered these groups to be representative of the general population, which may result in
294 overestimating STI prevalence compared to the total adult population. Variability in reporting
295 across studies hindered our adjustment of estimates for HIV prevalence, granular age groups, or
296 urban/rural location, which likely influenced sub-regional heterogeneities. Furthermore, our
297 adjustments for diagnostic test performance may have overestimated prevalence, particularly for
298 trichomoniasis, due to the poor sensitivity of widely used wet mount microscopy. Our reliance on
299 previously published WHO performance data, without accounting for improvements in
300 diagnostic accuracy over time, may have resulted in over-adjusting recent study observations and
301 thus overestimating temporal trends.

302 Despite these limitations, our systematic review provides a comprehensive analysis of
303 chlamydia, gonorrhoea, and trichomoniasis prevalence in SSA. We have addressed gaps in
304 previous prevalence estimates by examining temporal trends and sub-regional variation, while
305 incorporating studies from a range of populations considered representative of the general
306 population. Our multiple analytical approaches yielded similar male-to-female prevalence ratio
307 estimates, and our extensive sensitivity analyses of diagnostic test performance adjustments
308 have strengthened the robustness of our findings.

309 In conclusion, we estimated a high and geographically varied prevalence of three curable STIs in
310 SSA, with concerning increases in chlamydia prevalence over time. Male-to-female prevalence
311 ratios for SSA and its sub-regions differed from existing WHO and GBD global ratios, emphasising
312 the need to account for epidemiologic variations in future STI burden estimates and control
313 strategies. Strengthening sex-stratified aetiologic surveillance, through both regular sentinel
314 surveys and population-representative prevalence studies, is essential for progressing toward
315 WHO targets and reducing the STI burden in SSA.

316 **Contributors**

317 JM, JR, JWI-E, and M-CB conceptualised the study. DMR, EM, JM, JWI-E, JK, LH, MKW, OE, OS, QH,
318 RLA, and SK screened abstracts and full text articles for inclusion. JM, LH, RLA, and QH extracted
319 data from included studies. JM assessed diagnostic test validity, collated diagnostic test
320 performance characteristics, and performed the data analysis. JM wrote the initial manuscript
321 draft, which was revised with input from all authors. All authors approved the final manuscript.

322 **Declaration of interests**

323 The authors have no competing interests to declare.

324 **Funding**

325 JM acknowledges funding from the Imperial College President's PhD Fund. EM and JWI-E
326 acknowledge funding from the Gates Foundation (INV-005576). AC, JK, JM, JWI-E, M-CB, MKW,
327 OE, OS, and RLA acknowledge funding from the MRC Centre for Global Infectious Disease
328 Analysis (reference MR/R015600/1), jointly funded by the UK Medical Research Council (MRC)
329 and the UK Foreign, Commonwealth & Development Office (FCDO), under the MRC/FCDO
330 Concordat agreement and is also part of the EDCTP2 programme supported by the European
331 Union. SK was supported by the National Institute of Child Health and Human Development of
332 the National Institutes of Health under award number R01HD101351. MKW was supported by the

333 National Institute of Allergy and Infectious Diseases of the National Institutes of Health under
334 award number R01AI152721.

335 Under the grant conditions of UKRI and the Gates Foundation, a Creative Commons Attribution
336 4.0 Generic License (CC BY) has already been assigned to any Author Accepted Manuscript
337 version arising from this submission. The content is solely the responsibility of the authors and
338 does not necessarily represent the official views of the funders.

339 **Data sharing**

340 Data extracted from included studies and used for analysis are available as supplementary
341 material. Code and data reproducing the analysis is available from
342 <https://github.com/juliamichalow/sti-prevalence-ratios>.

343

344 References

- 345 1 World Health Organization. Global health sector strategies on, respectively, HIV, viral
346 hepatitis and sexually transmitted infections for the period 2022-2030. Geneva, 2022.
- 347 2 World Health Organization. Framework for monitoring sexually transmitted infections
348 and strengthening surveillance. Geneva, 2024.
- 349 3 World Health Organization. Report on global sexually transmitted infection surveillance.
350 Geneva, 2018.
- 351 4 World Health Organization. Global prevalence and incidence of selected curable sexually
352 transmitted infections. Overview and estimates. Geneva, 2001.
- 353 5 World Health Organization. Prevalence and incidence of selected sexually transmitted
354 infections: Methods and results used by WHO to generate 2005 estimates. Geneva,
355 2011.
- 356 6 World Health Organization. Global incidence and prevalence of selected curable sexually
357 transmitted infections - 2008. Geneva, 2012 DOI:10.1016/s0968-8080(12)40660-7.
- 358 7 Newman L, Rowley J, Hoorn S Vander, *et al.* Global estimates of the prevalence and
359 incidence of four curable sexually transmitted infections in 2012 based on systematic
360 review and global reporting. *PLoS One* 2015; **10**: 1–17.
- 361 8 Rowley J, Hoorn S Vander, Korenromp E, *et al.* Chlamydia, gonorrhoea, trichomoniasis
362 and syphilis: Global prevalence and incidence estimates, 2016. *Bull World Health Organ*
363 2019; **97**: 548–62.
- 364 9 World Health Organization. Global progress report on HIV, viral hepatitis and sexually
365 transmitted infections. Web Annex 2: Data methods. Geneva, 2021.
- 366 10 Ferrari AJ, Santomauro DF, Aali A, *et al.* Global incidence, prevalence, years lived with
367 disability (YLDs), disability-adjusted life-years (DALYs), and healthy life expectancy
368 (HALE) for 371 diseases and injuries in 204 countries and territories and 811 subnational
369 locations, 1990–2021: a systematic analysis for the Global Burden of Disease Study
370 2021. *The Lancet* 2024; **403**: 2133–61.
- 371 11 Nyemba DC, Haddison EC, Wang C, Johnson LF, Myer L, Davey DJ. Prevalence of curable
372 STIs and bacterial vaginosis during pregnancy in sub-Saharan Africa: a systematic review
373 and meta-analysis. *Sex Transm Infect* 2022; **98**: 484–91.
- 374 12 Chico RM, Mayaud P, Ariti C, Mabey D, Ronsmans C, Chandramohan D. Prevalence of
375 malaria and sexually transmitted and reproductive tract infections in pregnancy in sub-
376 Saharan Africa: a systematic review. *JAMA* 2012; **307**: 2079–86.
- 377 13 Torrone EA, Morrison CS, Chen PL, *et al.* Prevalence of sexually transmitted infections
378 and bacterial vaginosis among women in sub-Saharan Africa: an individual participant
379 data meta-analysis of 18 HIV prevention studies. *PLoS Med* 2018; **15**: e1002511.

- 380 14 Jarolimova J, Platt LR, Curtis MR, *et al.* Curable sexually transmitted infections among
381 women with HIV in sub-Saharan Africa. *Aids* 2022; **36**: 697–709.
- 382 15 Kassa ZY, Hussen S, Hadra N, Moges Y, Bonja F. Prevalence of *Neisseria gonorrhoeae*
383 infection among women of reproductive age in sub-Saharan Africa: a systematic review
384 and meta-analysis. *The European Journal of Contraception & Reproductive Health Care*
385 2020; **25**: 365–71.
- 386 16 Hussen S, Wachamo D, Yohannes Z, Tadesse E. Prevalence of chlamydia trachomatis
387 infection among reproductive age women in sub Saharan Africa: a systematic review and
388 meta-analysis. *BMC Infect Dis* 2018; **18**. <https://pubmed.ncbi.nlm.nih.gov/30477441/>
389 (accessed Sept 4, 2024).
- 390 17 Vaezzadeh K, Sepidarkish M, Mollalo A, *et al.* Global prevalence of *Neisseria*
391 *gonorrhoeae* infection in pregnant women: a systematic review and meta-analysis. *Clin*
392 *Microbiol Infect* 2023; **29**: 22–31.
- 393 18 Joseph Davey DL, Shull HI, Billings JD, Wang D, Adachi K, Klausner JD. Prevalence of
394 Curable Sexually Transmitted Infections in Pregnant Women in Low- and Middle-Income
395 Countries From 2010 to 2015: A Systematic Review. *Sex Transm Dis* 2016; **43**: 450–8.
- 396 19 Whelan J, Abbing-Karahagopian V, Serino L, Unemo M. Gonorrhoea: a systematic review
397 of prevalence reporting globally. *BMC Infectious Diseases* 2021 21:1 2021; **21**: 1–23.
- 398 20 Williams R, Auzenberg M, Etombi CL, *et al.* P187. Curable STIs among pregnant women
399 attending antenatal care facilities in low- and middle-income countries from 2000 to
400 2022: A systematic review and meta-analysis. In: 23rd IUSTI World Congress. 2022.
- 401 21 UN Statistics Division. Standard country or area codes for statistical use (M49).
402 <https://unstats.un.org/unsd/methodology/m49/> (accessed June 14, 2023).
- 403 22 Covidence systematic review software. Veritas Health Innovation, Melbourne, Australia.
404 <https://www.covidence.org/> (accessed Dec 2, 2024).
- 405 23 Michalow J, Walters MK, Olanrewaju E, *et al.* Aetiology of vaginal discharge, urethral
406 discharge, and genital ulcer in sub-Saharan Africa: A systematic review and meta-
407 regression. *PLoS Med* 2024; **21**: e1004385.
- 408 24 World Health Organization. Laboratory and point-of-care diagnostic testing for sexually
409 transmitted infections, including HIV. Geneva, 2023.
- 410 25 Delany-Moretlwe S, Hughes JP, Bock P, *et al.* Cabotegravir for the prevention of HIV-1 in
411 women: results from HPTN 084, a phase 3, randomised clinical trial. *The Lancet* 2022;
412 **399**: 1779–89.
- 413 26 UN Population Division. Data Portal. <https://population.un.org/dataportal/home>
414 (accessed Aug 21, 2023).
- 415 27 Hogg R V, McJean JW, Craig AT. Introduction to mathematical statistics, Eighth ed.
416 Boston: Pearson, 2019.

- 417 28 Stan Development Team. RStan: the R interface to Stan. R package version 2.21.2. 2020.
418 <https://mc-stan.org/> (accessed May 29, 2023).
- 419 29 Generalized linear mixed models using Template Model Builder. R package version 1.1.7.
420 2023; published online April 5.
- 421 30 Hall L, Michalow J, Imai-Eaton JW, Boily M-C, Rowley J, Chico M. Sexually transmitted
422 infection prevalence ratios in sub-Saharan Africa: a systematic review and meta-
423 analysis. *PROSPERO* 2024.
- 424 31 Page MJ, McKenzie JE, Bossuyt PM, *et al.* The PRISMA 2020 statement: an updated
425 guideline for reporting systematic reviews. *BMJ* 2021; **372**.
- 426 32 Joint United Nations Programme on HIV/AIDS. IN DANGER: UNAIDS Global AIDS Update.
427 Geneva, 2022.
- 428 33 Cohen MS, Council OD, Chen JS. Sexually transmitted infections and HIV in the era of
429 antiretroviral treatment and prevention: the biologic basis for epidemiologic synergy. *J Int*
430 *AIDS Soc* 2019; **22**. DOI:10.1002/jia2.25355.
- 431 34 Kissinger P, Adamski A. Trichomoniasis and HIV interactions: A review. *Sex Transm Infect*
432 2013; **89**: 426–33.
- 433 35 Workowski KA, Bachmann LH, Chan PA, *et al.* Sexually Transmitted Infections Treatment
434 Guidelines, 2021. *MMWR Recommendations and Reports* 2021; **70**: 1.
- 435 36 Kularatne RS, Niit R, Rowley J, *et al.* Adult gonorrhoea, chlamydia and syphilis prevalence,
436 incidence, treatment and syndromic case reporting in South Africa: Estimates using the
437 Spectrum-STI model, 1990-2017. *PLoS One* 2018; **13**: 205863.
- 438 37 Korenromp EL, Mahiané G, Rowley J, *et al.* Estimating prevalence trends in adult
439 gonorrhoea and syphilis in low- and middle-income countries with the Spectrum-STI
440 model: Results for Zimbabwe and Morocco from 1995 to 2016. *Sex Transm Infect* 2017;
441 **93**: 599–606.
- 442
- 443

444 **Table 1: Summary of characteristics for included studies.**

Variable	Group	Chlamydia (N=139)	Gonorrhoea (N=140)	Trichomoniasis (N=162)	Total (N=211)
Sub-region¹	Western Africa	20 (14.4%)	20 (14.3%)	51 (31.5%)	59 (28.0%)
	Central Africa ²	10 (7.2%)	8 (5.7%)	8 (4.9%)	12 (5.7%)
	Eastern Africa	69 (49.6%)	70 (50.0%)	63 (38.9%)	90 (42.7%)
	Southern Africa	49 (35.3%)	51 (36.4%)	46 (28.4%)	59 (28.0%)
	Multiple sub-regions ³	1 (0.7%)	1 (0.7%)	1 (0.6%)	1 (0.5%)
Study midpoint year^{1,4}	2000-2004	27 (19.4%)	32 (22.9%)	34 (21.0%)	45 (21.3%)
	2005-2009	18 (12.9%)	19 (13.6%)	21 (13.0%)	27 (12.8%)
	2010-2014	35 (25.2%)	31 (22.1%)	38 (23.5%)	51 (24.2%)
	2015-2019	42 (30.2%)	41 (29.3%)	54 (33.3%)	64 (30.3%)
	2020-2024	18 (12.9%)	17 (12.1%)	15 (9.3%)	25 (11.8%)
Population group¹	ANC attendees	39 (28.1%)	42 (30.0%)	75 (46.3%)	85 (40.3%)
	FP attendees	12 (8.6%)	12 (8.6%)	11 (6.8%)	17 (8.1%)
	GYN attendees	6 (4.3%)	8 (5.7%)	11 (6.8%)	14 (6.6%)
	PHC/OPD attendees	22 (15.8%)	22 (15.7%)	20 (12.3%)	30 (14.2%)
	Students	15 (10.8%)	11 (7.9%)	15 (9.3%)	19 (9.0%)
	Community members ⁵	15 (10.8%)	16 (11.4%)	6 (3.7%)	17 (8.1%)
	HIV/STI prevention trial participants ⁶	22 (15.8%)	22 (15.7%)	22 (13.6%)	24 (11.4%)
	Population-representative survey participants	10 (7.2%)	10 (7.1%)	8 (4.9%)	11 (5.2%)
Sex	Female only	106 (76.3%)	109 (77.9%)	143 (88.3%)	174 (82.5%)
	Male only	7 (5.0%)	5 (3.6%)	7 (4.3%)	8 (3.8%)
	Both sexes (stratified)	26 (18.7%)	26 (18.6%)	12 (7.4%)	29 (13.7%)
Age group	Adult (12+ years)	112 (80.6%)	116 (82.9%)	140 (86.4%)	180 (85.3%)
	Youth (12–25 years)	27 (19.4%)	25 (17.9%)	22 (13.6%)	31 (14.7%)
HIV status^{1,7}	HIV-negative	37 (26.6%)	38 (27.1%)	38 (23.5%)	46 (21.8%)
	Non-stratified	103 (74.1%)	103 (73.6%)	125 (77.2%)	166 (78.7%)

445 N: number of studies, ANC: antenatal care, FP: family planning, GYN: gynaecology clinic, PHC/OPD: Primary
446 healthcare or outpatient department.

447 ¹The same study is included in more than one subcategory if it reports across different variable levels or when multiple
448 levels are relevant. ² Western and Central Africa combined for analysis. ³Study without country- or region-specific
449 reporting was allocated to Eastern Africa for analysis, according to where most participants were recruited. ⁴Midpoint
450 year between start and end of data collection period. ⁵Community members recruited through non-clinical venues,
451 such as social spaces or places of worship. ⁶Studies reporting baseline data among trial participants. ⁷Studies
452 exclusively among populations living with HIV were excluded. Data were preferentially extracted and analysed without
453 stratifying by HIV status if both were reported.
454

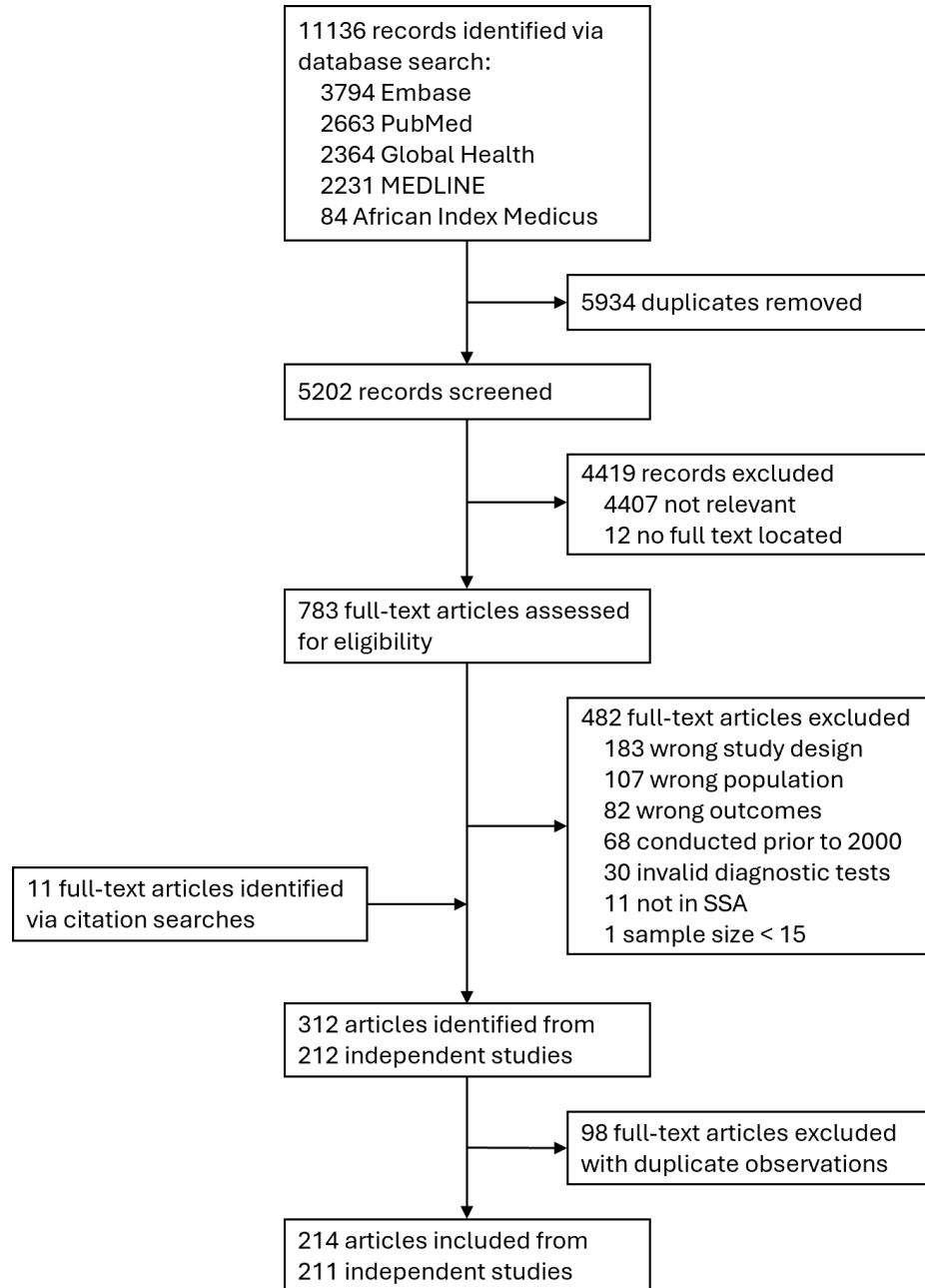
455 **Table 2: Adjusted prevalence ratios for chlamydia, gonorrhoea, and trichomoniasis in sub-Saharan Africa,**
 456 **estimated via log-binomial generalised linear mixed-effects models**

Variable	Chlamydia aPR (95% CI)	Gonorrhoea aPR (95% CI)	Trichomoniasis aPR (95% CI)
Intercept	0.14 (0.11-0.18)	0.03 (0.02-0.05)	0.09 (0.07-0.12)
Sub-region			
Western and Central	0.31 (0.22-0.43)	0.36 (0.23-0.57)	0.94 (0.68-1.31)
Eastern	0.38 (0.35-0.41)	0.64 (0.56-0.74)	1.01 (0.85-1.21)
Southern	Ref	Ref	Ref
Sub-region:Sex¹			
Western and Central:Male	0.63 (0.43-0.93)	1.05 (0.54-2.04)	0.14 (0.09-0.20)
Eastern:Male	0.61 (0.53-0.70)	0.69 (0.56-0.85)	0.36 (0.30-0.44)
Southern:Male	0.61 (0.55-0.66)	0.76 (0.65-0.90)	0.15 (0.11-0.20)
Sub-region:Year²			
Western and Central:Year	0.99 (0.95-1.03)	0.99 (0.94-1.04)	0.99 (0.96-1.02)
Eastern:Year	1.07 (1.05-1.09)	1.01 (0.99-1.04)	0.97 (0.94-1.01)
Southern:Year	1.02 (1.00-1.04)	1.02 (0.99-1.05)	0.96 (0.92-0.99)
Population			
ANC attendees	Ref	Ref	Ref
FP attendees	0.95 (0.63-1.45)	0.90 (0.50-1.64)	0.54 (0.32-0.90)
GYN attendees	1.03 (0.57-1.88)	0.87 (0.42-1.82)	1.34 (0.80-2.25)
PHC/OPD attendees	0.81 (0.57-1.14)	1.49 (0.92-2.39)	0.94 (0.61-1.43)
Students	1.06 (0.69-1.63)	1.14 (0.56-2.31)	1.23 (0.76-1.99)
Community members	0.97 (0.66-1.44)	1.10 (0.65-1.87)	0.96 (0.50-1.86)
HIV/STI prevention trial participants	0.89 (0.61-1.28)	1.20 (0.72-1.99)	1.00 (0.62-1.63)
Population-representative survey participants	0.90 (0.58-1.42)	1.19 (0.64-2.20)	1.32 (0.71-2.44)
Age group			
All adults (12+ years)	Ref	Ref	Ref
Younger adults (12 - 25 years)	1.14 (0.85-1.52)	1.12 (0.75-1.68)	0.55 (0.35-0.88)
HIV status			
Non-stratified	Ref	Ref	Ref
HIV negative	1.42 (1.06-1.90)	1.06 (0.71-1.59)	0.79 (0.56-1.14)
Diagnostic test			
NAAT	Ref	Ref	Ref
Culture	-	1.60 (1.00-2.54)	1.36 (0.89-2.09)
DFA	0.70 (0.32-1.51)	-	-
ELISA	2.26 (0.86-5.98)	-	-
Rapid antigen test	2.94 (1.76-4.92)	0.52 (0.06-4.61)	1.03 (0.56-1.90)
Wet mount	-	-	1.61 (1.14-2.29)
Model variance			
τ^2 fixed	0.51	0.16	0.45
τ^2 random	0.34	0.60	0.60
Number groups			
Number studies	139	140	162
Number observations	202	202	207

457 Generalised linear mixed-effects models on the risk of chlamydia, gonorrhoea, and trichomoniasis in sub-Saharan
 458 Africa, using all study observations adjusted for diagnostic test performance.

459 ¹Reference sex is female. ²Midpoint year between start and end of data collection period; centred at 2012.

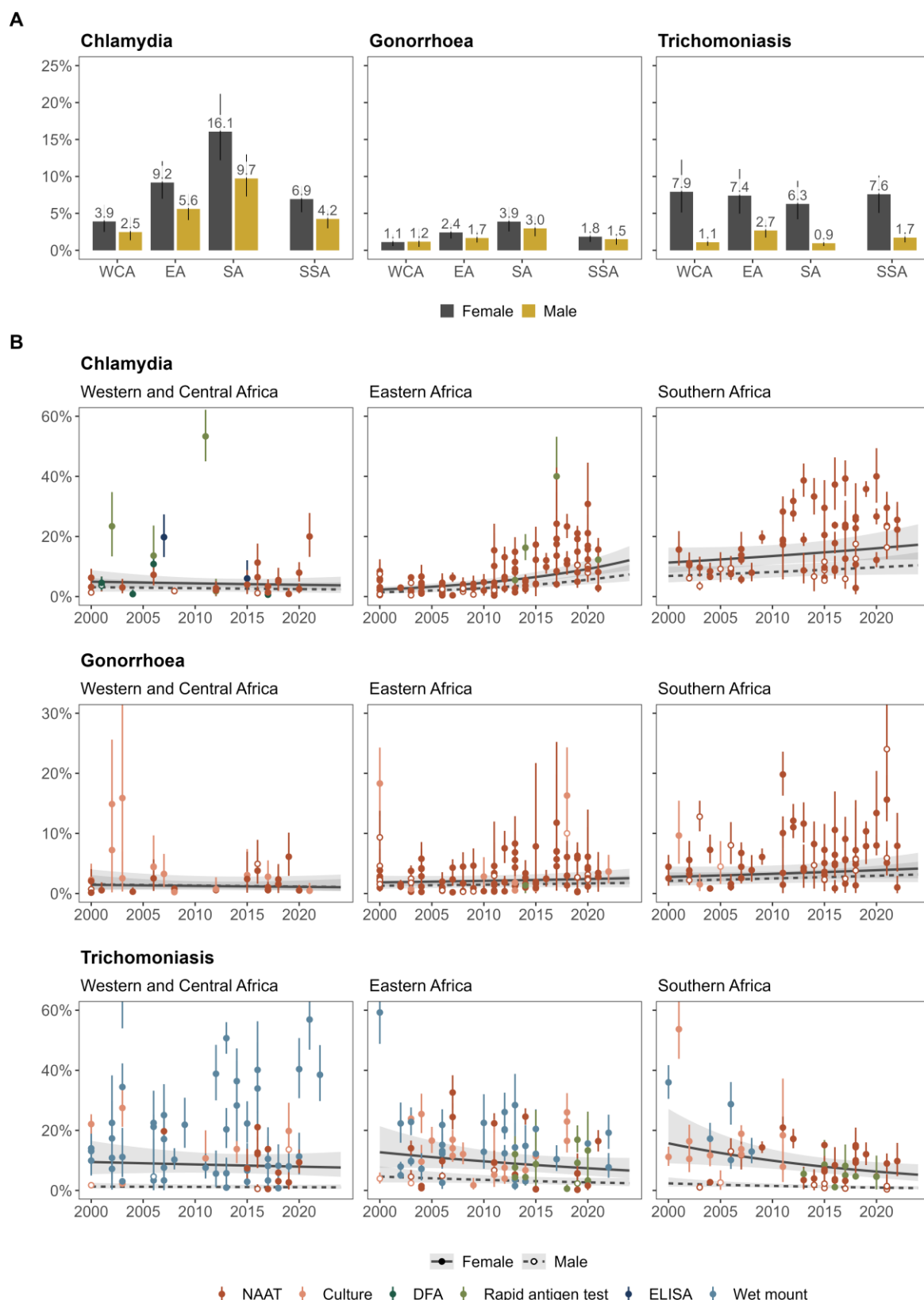
460 aPR: adjusted prevalence ratio, 95% CI: 95% confidence interval, ANC: antenatal care, DFA: direct fluorescent
 461 antibody, FP: family planning clinic, GYN: gynaecology clinic, NAAT: nucleic acid amplification test, PHC/OPD: primary
 462 health care or outpatient department, Ref: Reference group, τ^2 : variance.
 463



464

465 **Figure 1: Study selection flowchart.** Flowchart of study selection for systematic review.

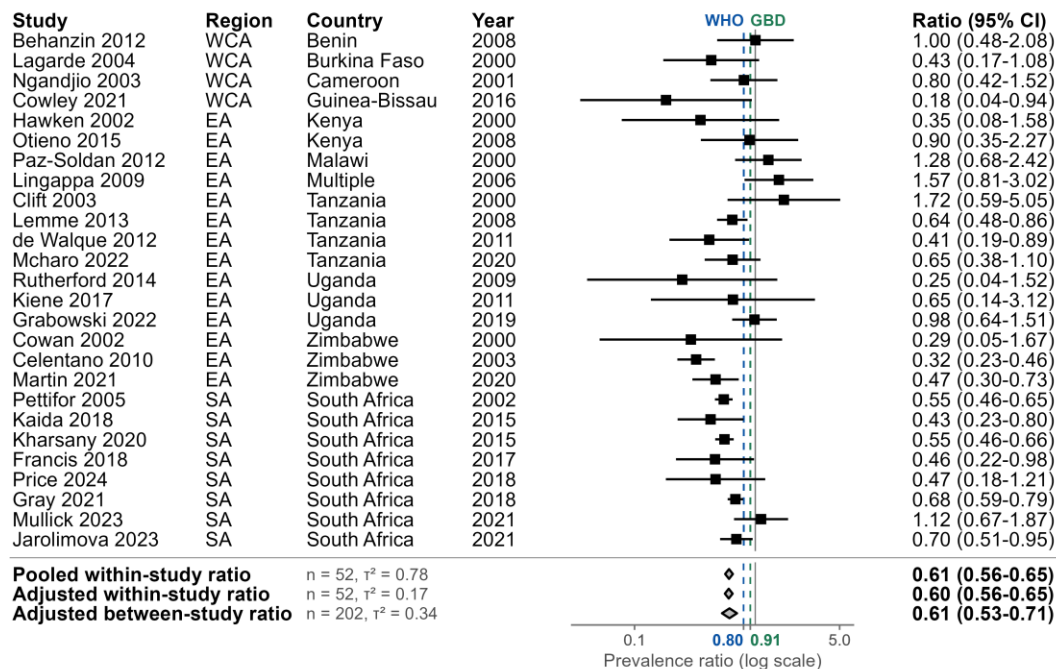
466



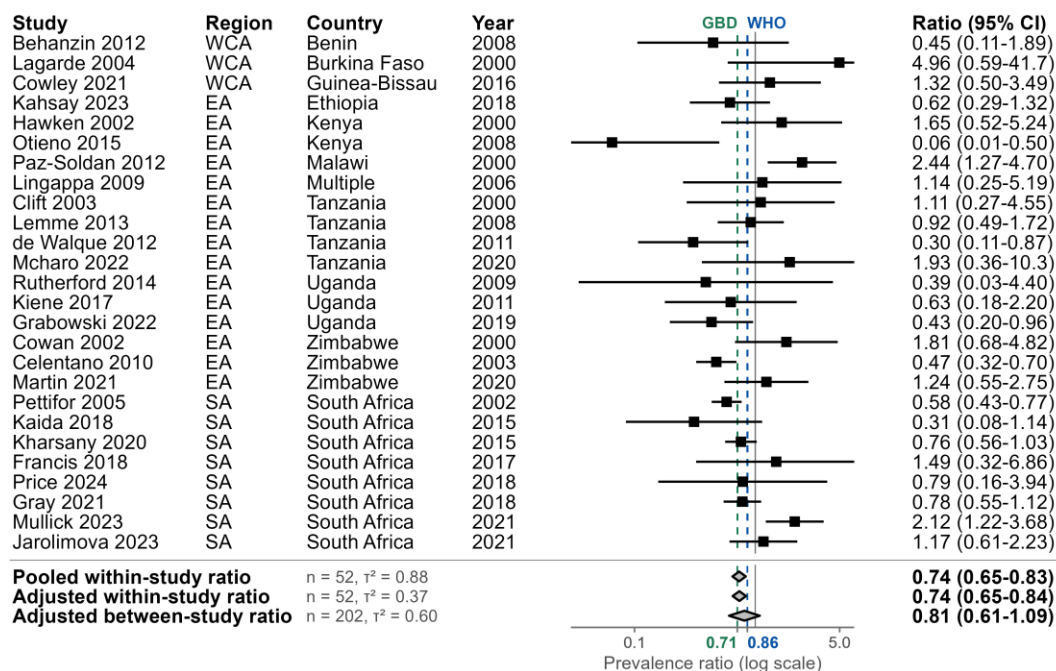
467
 468 **Figure 2: Sexually transmitted infection prevalence per sub-region in sub-Saharan Africa.** Estimates of chlamydia,
 469 gonorrhoea, and trichomoniasis prevalence by sex and sub-region. Sub-regional estimates generated using log-
 470 binomial generalised linear mixed-effects models for each infection. Sub-Saharan African estimates represent sex-
 471 matched population-weighted means. Panel A: Prevalence estimates in 2020. Bars and error lines depict mean
 472 prevalence estimates with 95% confidence intervals. Panel B: Prevalence estimates between 2000 and 2024. Lines
 473 and shaded areas depict mean prevalence estimates (solid line: females, dashed line: males) with 95% confidence

474 intervals. Points and error lines represent study prevalence observations (solid point: female, open point: male) with
475 95% confidence intervals, colour coded according to diagnostic test category. Y-axes truncated. DFA: Direct
476 fluorescent antibody, EA: Eastern Africa, NAAT: nucleic acid amplification test, SA: Southern Africa, SSA: Sub-Saharan
477 Africa, WCA: Western and Central Africa.

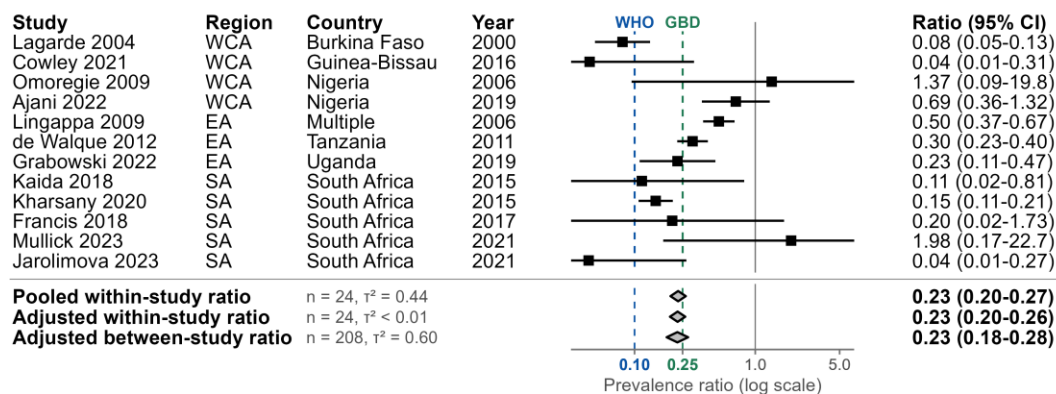
A Chlamydia



B Gonorrhoea



C Trichomoniasis



480 **Figure 3: Sexually transmitted infection male-to-female prevalence ratio estimates in sub-Saharan Africa.** Study
481 observations and aggregate estimates of male-to-female prevalence ratios for (A) chlamydia, (B) gonorrhoea and (C)
482 trichomoniasis. Ratios estimated using log-binomial generalised linear mixed-effects models per infection. Models for
483 within-study ratios used study observations among both sexes and between-study ratios used all study observations.
484 All models included sex as a fixed effect and study-level random intercepts. Pooled ratio models did not adjust for
485 additional covariates. Adjusted ratio models included fixed effects for region, year, age-group, HIV-status, diagnostic
486 test, and population group (between-study only). Points and error lines depict ratios and 95% confidence intervals for
487 studies with observations among both sexes. Diamonds depict population-weighted mean ratios and 95% confidence
488 intervals for sub-Saharan Africa, with adjusted ratios reported for 2020. Blue dotted lines and x-axis labels represent
489 WHO global male-to-female prevalence ratios.^{5,8} Green dotted lines and x-axis labels represent the Global Burden of
490 Disease study male-to-female prevalence ratios.¹⁰ X-axes are truncated. EA: Eastern Africa, SA: Southern Africa, WCA:
491 Western and Central Africa, n: number of observations, τ^2 : variance for study random intercept.

492