

1 **Gestational diabetes mellitus and hypertension**
2 **causally increased the risk of postpartum depression:**
3 **a Mendelian randomization analysis**

4

5 Jia Jia¹, Haojie Liu², Liying Cao³, Ying Xing^{4*}

6

7 ¹Intravenous Medication Centralized Preparation Center, Nanyang Central Hospital,

8 Nanyang, Henan, China

9 ²Medical Oncology, Nanyang Central Hospital, Nanyang, Henan, China

10 ³Hepatobiliary Disease Diagnosis and Treatment Center, Nanyang First People's

11 Hospital, Nanyang, Henan, China

12 ^{4*}Newborn Disease Screening Center, Nanyang Central Hospital, Nanyang, Henan,

13 China

14

15 ***Corresponding author**

16 Email: m201976059@hust.edu.cn (YX)

17 <https://orcid.org/0009-0006-1347-3343>

18

19

20

21

NOTE: This preprint reports new research that has not been certified by peer review and should not be used to guide clinical practice.

22 Abstract

23 **Background:** Observational studies have presented inconsistent findings on the
24 association between gestational diabetes mellitus, gestational hypertension, and
25 postpartum depression. This study used Mendelian randomization to examine the
26 potential causal relationship between gestational diabetes mellitus, gestational
27 hypertension, and postpartum depression.

28 **Methods:** We obtained data from genome-wide association study databases. Single
29 nucleotide polymorphisms associated with gestational diabetes mellitus (5,687 cases;
30 117,892 controls), gestational hypertension (7,686 cases; 115,893 controls), and
31 postpartum depression (7,604 cases; 59,601 controls) were analyzed. Various
32 Mendelian randomization methods were applied, including inverse variance weighted,
33 weighted median, MR-Egger, simple mode, and weighted mode. Sensitivity analyses
34 such as the MR-Egger intercept test, funnel plot, MR-PRESSO analysis, Cochran's Q
35 test, and leave-one-out tests confirmed the robustness of our findings. The MR-Steiger
36 test was applied to verify the causal direction from exposure to outcome.

37 **Results:** Genetically predicted gestational diabetes mellitus was significantly
38 associated with increased postpartum depression risk (IVW OR = 1.09; 95% CI: 1.03-
39 1.14; $p = 1.24 \times 10^{-3}$), as was gestational hypertension (IVW OR = 1.08; 95% CI: 1.01-
40 1.15; $p = 0.01$). Multiple sensitivity analyses further reinforced the validity of these
41 findings. Multivariable Mendelian randomization adjusting for gestational
42 hypertension confirmed the independent effect of gestational diabetes mellitus on

43 postpartum depression and vice versa for gestational hypertension.

44 **Conclusion:** Both gestational diabetes mellitus and gestational hypertension increase
45 the incidence of postpartum depression. By focusing on interventions to manage these
46 prenatal conditions, nursing professionals can play a crucial role in potentially reducing
47 the incidence of postpartum depression.

48 **Keywords:** gestational diabetes mellitus, gestational hypertension, postpartum
49 depression, Mendelian randomization

50

51 **Introduction**

52 The diagnostic criteria for postpartum depression (PPD) are the same as for non-
53 perinatal major depression, encompassing symptoms such as depressed mood, loss of
54 interest, anhedonia, sleep and appetite disturbance, impaired concentration,
55 psychomotor disturbance, fatigue, feelings of guilt or worthlessness, and suicidal
56 thoughts, with prevalence rates ranging from 13-19% [1,2]. A major depressive episode
57 "with peripartum onset" occurs "during pregnancy or in the four weeks following
58 delivery", as per the American Psychiatric Association's Diagnostic and Statistical
59 Manual of Mental Disorders [3]. In clinical practice and research, PPD is often more
60 broadly defined as occurring from 4 weeks up to 12 months after childbirth [4]. PPD
61 has significant negative consequences for both mothers and their children. These
62 consequences include maternal suffering, impaired mother-infant relationships, and
63 long-term negative impacts on child development across cognitive, behavioural, and

64 social-emotional domains [5].

65 Gestational diabetes mellitus (GDM) and hypertensive disorders of pregnancy
66 (HDP), including gestational hypertension (GH) and preeclampsia, are common
67 pregnancy complications characterized by glucose intolerance and elevated blood
68 pressure, respectively. Previous observational studies have shown that both GDM and
69 GH are associated with several adverse maternal and fetal outcomes, including an
70 increased risk of PPD. For instance, GDM, which affects 5.8-12.9% of the global
71 population [6], increased the risk of PPD symptoms by 32% [7]. Similarly, GH
72 significantly increased the risk of PPD, with an incidence rate ratio (IRR) of 1.84 (95%
73 CI: 1.33-2.55) [8]. The causal pathways remain unclear despite these associations due
74 to potential confounding factors in observational studies.

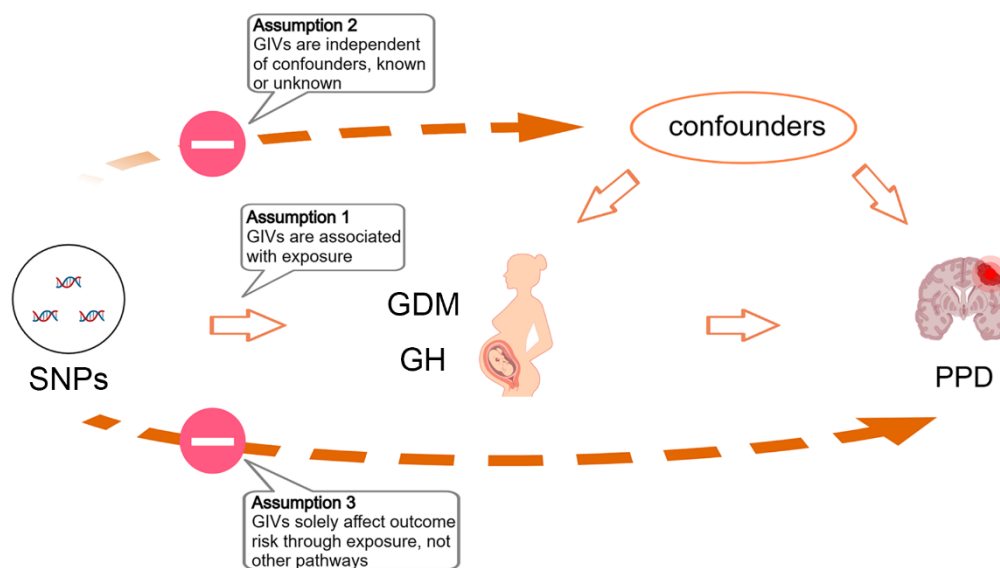
75 MR offers a robust methodological approach to overcome the limitations of
76 observational studies and establish a causal relationship [9]. MR uses genetic variants
77 as instrumental variables to infer causality, minimizing biases from confounding
78 variables and reverse causation. This method leverages the random assortment of genes
79 at conception to provide a more reliable estimate of the causal effects of GDM and GH
80 on the risk of PPD [10].

81 In nursing practice, understanding the implications of GDM and GH on maternal
82 mental health is crucial. By identifying these risk factors, nurses can provide targeted
83 support and early interventions, improving outcomes for both mothers and infants. This
84 essay examined the causal relationships between GDM, GH, and PPD through a MR
85 approach, offering insights into nursing care and preventive strategies.

86 Methods

87 Study design

88 MR analysis investigated the causal relationships between risk factors and diseases
89 using publicly available data from genome-wide association studies (GWAS). In this
90 context, genetic variations were treated as instrumental variables, helping to reduce the
91 impact of unmeasurable confounding factors and thus leading to more robust causal
92 inferences. MR was based on the following three core assumptions: (1) genetic
93 instrument variables (GIVs) were strongly associated with the exposure; (2) GIVs were
94 independent of confounders, known or unknown; and (3) GIVs solely affected outcome
95 risk through exposure, not other pathways [11]. **Fig 1.** provides an overview of the MR
96 research framework. No additional ethical approval was required since the data was
97 publicly available and relevant research had already undergone ethical review.



98

99 **Fig 1.** The Mendelian randomisation framework shows a causal relationship between GDM, GH, and
100 PPD. GDM, gestational diabetes mellitus; GH, gestational hypertension; PPD, postpartum depression;
101 SNPs, single nucleotide polymorphisms; GIVs, genetic instrument variables

102 **Data sources**

103 We retrieved data from the GWAS database (<https://gwas.mrcieu.ac.uk/>), which
104 included GDM (123,579 individuals, finn-b-GEST_DIABETES), GH (123,579
105 individuals, finn-b-O15_HYPTENSPREG), and PPD (67,205 individuals, finn-b-
106 O15_POSTPART_DEPR). The remaining relevant information could be found in
107 **Table 1.** We used a rigorous quality control method to select GIVs, namely single
108 nucleotide polymorphisms (SNPs). Based on MR analysis methods, a minimum of 10
109 SNPs was required [12]. Using a threshold of clump $p = 1 \times 10^{-5}$, we selected 34 SNPs
110 associated with GDM and 45 SNPs associated with GH [13]. We set parameters $kb =$
111 10,000 and $r2 = 0.001$ to eliminate linkage disequilibrium between SNPs. We calculated
112 the F-statistic to assess the risk of weak instrument bias using the formula $F = [(n-k-$
113 $1)/k] \times [R^2/(1-R^2)]$, where n is the sample size, k is the number of SNPs, and R^2
114 represents the proportion of variance explained by each SNP [14]. If the F-statistics for
115 all SNPs were greater than 10, it indicated a low risk of weak instrument bias [10].

116

117

118

119

120 **Table 1 Information on data sets**

	Disease	Sample size	Number of SNPs	Population	Origin
Exposure	GDM	123,579	16,379,784	European	FinnGen
	GH	123,579	16,379,784	European	FinnGen
Outcomes	PPD	67,205	16,376,275	European	FinnGen

121 GDM, gestational diabetes mellitus; GH, gestational hypertension; PPD, postpartum depression; SNPs,
122 single nucleotide polymorphisms.

123 **Mendelian randomization analyses**

124 The causal relationship between exposure and outcome was evaluated using five
125 methods: inverse variance weighted (IVW) [13], MR-Egger [15], weighted median [16],
126 simple mode, and weighted mode [17]. IVW was the primary method, requiring all
127 SNPs to adhere to the three MR principles. It does not consider an intercept in
128 regression and uses the inverse of the outcome variance (square of the standard error)
129 as a weight for fitting. MR-Egger also employs the inverse of the outcome variance as
130 weights but includes an intercept, mainly aiming to assess the presence of horizontal
131 pleiotropy. The weighted median sorts all SNP effects by magnitude and takes the
132 median value as the final effect estimate. Simple mode treats the association of each
133 instrumental variable with both the exposure and the outcome as having equal weight.
134 It is applicable when there are only a few instrumental variables. Weighted mode
135 weights each instrumental variable based on its association strength with the exposure,
136 allowing for a more accurate estimation of causal effects. In the absence of

137 heterogeneity and horizontal pleiotropy, IVW estimates are preferred. When only
138 heterogeneity is present without horizontal pleiotropy, the IVW random effects model
139 can be used. We used the MR-Steiger test to verify the direction of causality. $p < 0.05$
140 indicated the absence of reverse causality. The statistical power was calculated using
141 prior observational studies with mRnd (<https://shiny.cnsgenomics.com/mRnd/>) [18].

142 **Analysis of heterogeneity and horizontal pleiotropy**

143 Sensitivity analyses were conducted to assess the robustness of the research findings
144 and potential biases. Heterogeneity may arise from genetic and environmental
145 differences, measurement bias, interactions, and sample variations. The Cochran's Q
146 statistic was used to evaluate whether there was heterogeneity in the IVW and MR-
147 Egger results, with $p > 0.05$ indicating no heterogeneity among SNPs [19]. The intercept
148 term in the MR-Egger method was used to indicate horizontal pleiotropy. If there was
149 a significant difference between this intercept term and 0 ($p < 0.05$), it suggested the
150 presence of horizontal pleiotropy. Additionally, we employed MR-PRESSO to detect
151 horizontal pleiotropy, where $p > 0.05$ implied that the impact of horizontal pleiotropy
152 on the results could be disregarded [20]. A funnel plot was generated using the
153 `mr_funnel_plot` function. If the SNPs are symmetrically distributed around the IVW in
154 a funnel shape, it indicates the absence of significant horizontal pleiotropy. Lastly, we
155 used the leave-one-out approach to iteratively remove one SNP at a time and calculated
156 the meta-effect of the remaining SNPs. If the overall error line does not change
157 significantly and all errors fall on the same side of 0 after removing each SNP, the

158 results are stable and not influenced by any SNP [21]. All the analyses above were
159 performed using the TwoSample MR package (version 0.5.7) in R (version 4.3.1).

160 **Results**

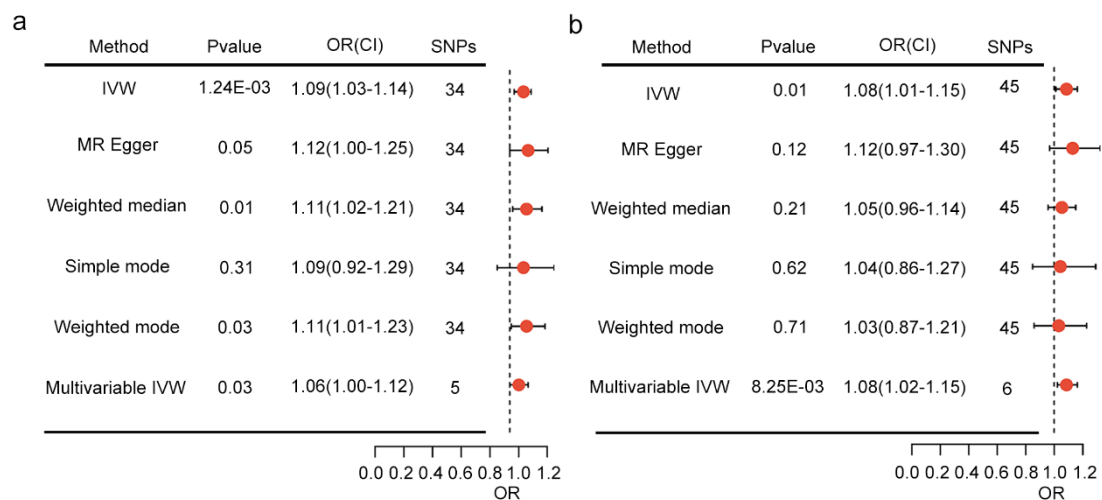
161 **Gestational diabetes mellitus and postpartum depression**

162 In the analysis of PPD, all 34 SNPs correlated with GDM were examined (**S1 Table**).
163 These SNPs displayed a robust F statistic exceeding 10 (mean = 54.67, range = 45.22 -
164 184.10), suggesting a minimal likelihood of weak instrument bias.

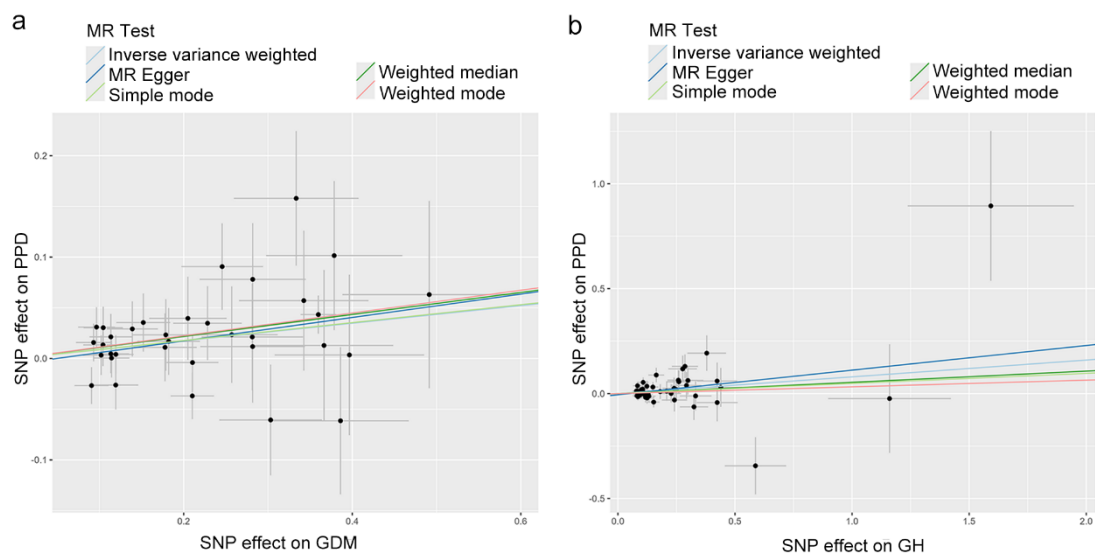
165 The IVW indicated a significant positive association, with an OR of 1.09 (95% CI:
166 1.03 - 1.14; $p = 1.24 \times 10^{-3}$). Weighted median yielded comparable results,
167 demonstrating an OR of 1.11 (95% CI: 1.02 - 1.21; $p = 0.01$). Weighted mode indicated
168 a significant positive association, with an OR of 1.11 (95% CI: 1.01 - 1.23; $p = 0.03$)
169 (**Fig 2a**). The beta values from MR-Egger and simple mode were consistent with the
170 direction of those from IVW, weighted median, and weighted mode (**Figs 3a and 4a**).
171 The Cochran's Q test did not find any significant evidence of heterogeneity between the
172 SNPs ($p = 0.58$). The MR-Egger intercept test ($p = 0.57$) and MR-PRESSO analysis (p
173 = 0.57) indicated no evidence of horizontal pleiotropy. SNPs were symmetrically
174 distributed around the IVW in a funnel shape, indicating no significant horizontal
175 pleiotropy (**Fig 5a**). The leave-one-out analysis showed that the causal relationship
176 remained stable when any single SNP was removed (**Fig 6a**). The MR-Steiger test
177 showed that the influence of GDM on PPD risk was the correct causal direction ($p =$

178 5.07×10^{-39}). Our study had a power of 100% for detecting the causal effect of GDM on
 179 PPD.

180 In the multivariable MR analysis that adjusted for preeclampsia, significant
 181 evidence indicated a direct causal relationship between GDM and an increased risk of
 182 PPD (IVW OR = 1.06, 95% CI: 1.00 - 1.12, $p = 0.03$) (Fig 2a).



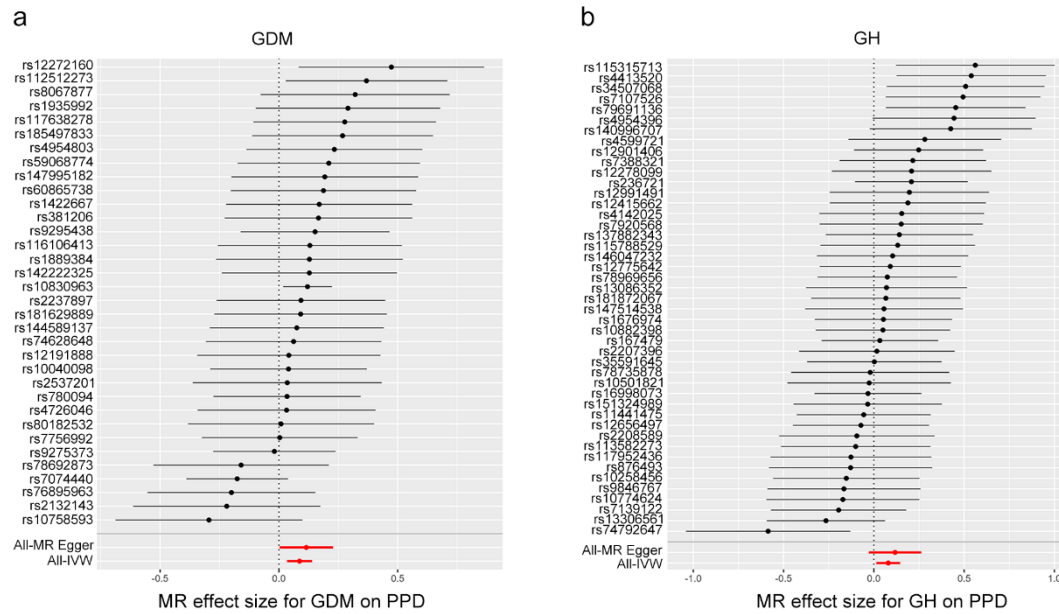
183
 184 **Fig 2.** The OR and CI presented in the study demonstrate the impact of GDM and GH on the risk of PPD.
 185 The study compares the outcomes of MR analyses carried out using various methods. (a) Gestational
 186 diabetes mellitus; (b) Gestational hypertension. OR, odds ratios; CI, confidence intervals



187

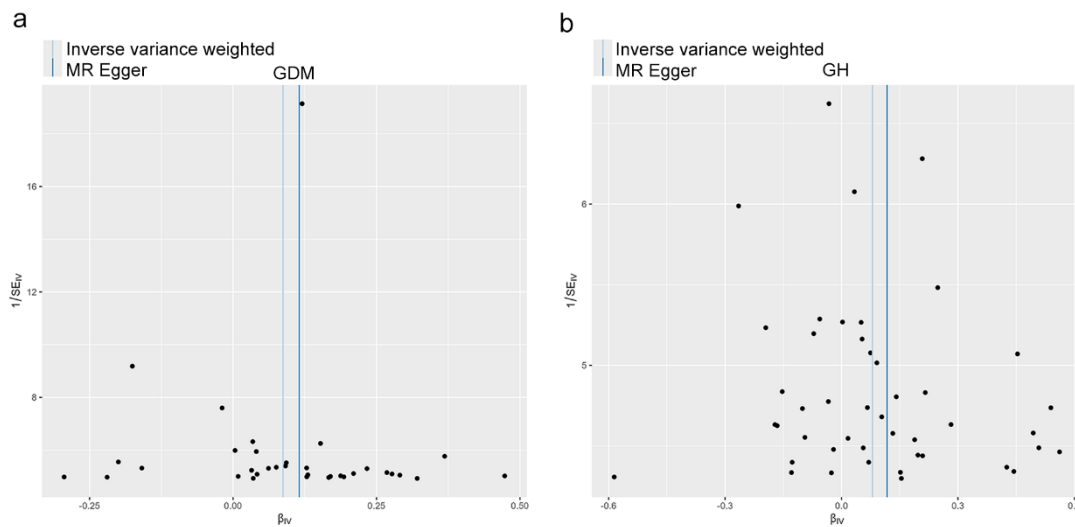
188 **Fig 3.** The scatter plot showcases the effect of GDM and GH associated with SNP on PPD, represented

189 on the log-odds scale. The lines' slopes indicate the causal association for each method



190

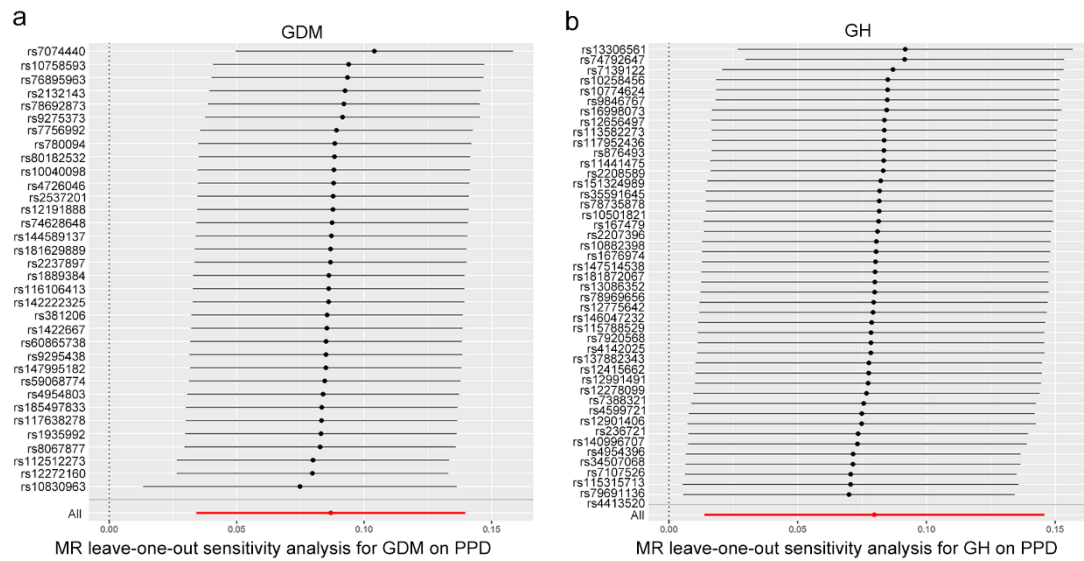
191 **Fig 4.** A forest plot is utilized to visually represent the causal effect of each SNP on the risk of PPD



192

193 **Fig 5.** Funnel plots are utilized to visually represent the general heterogeneity of MR estimates regarding

194 the impact of GDM and GH on the risk of PPD



195

196 **Fig 6.** A leave-one-out plot is generated to visually illustrate the causal effect of GDM and GH on the

197 risk of PPD by systematically excluding one single nucleotide polymorphism at a time

198 **Gestational hypertension and postpartum depression**

199 The summary statistics for PPD included all 45 independent SNPs associated with GH

200 **(S2 Table)**. The F statistic of these SNPs was > 10 (mean = 38.93, range = 34.26 -

201 54.39), indicating a low risk of weak instrument bias.

202 This study demonstrated a positive association between genetically predicted GH

203 and PPD, with an OR of 1.08 (95% CI: 1.01 - 1.15, $p = 0.01$) in the IVW analysis (**Fig**

204 **2b**). The beta values of MR-Egger, weighted median, simple mode, and weighted mode

205 were consistent with the direction of the beta value of IVW (**Figs 3b and 4b**). No

206 statistical evidence of heterogeneity was found across instruments ($p = 0.15$). The MR-

207 Egger intercept test ($p = 0.57$) and MR-PRESSO analysis ($p = 0.18$) showed no

208 horizontal pleiotropy. The symmetric funnel-shaped distribution of SNPs around the

209 IVW indicated no significant horizontal pleiotropy (**Fig 5b**). In addition, no single SNP

210 affected the overall estimate, as shown by the leave-one-out analysis (**Fig 6b**). The MR-
211 Steiger test confirmed that GH influences the risk of PPD in correct causal direction (p
212 $= 2.88 \times 10^{-45}$). Our study had 100% power to detect the causal effect of GH on the risk
213 of PPD.

214 In the multivariable MR analysis, after adjusting for GDM as a potential
215 confounder, the causal effect of GH on the risk of PPD was still observed (IVW OR =
216 1.08, 95% CI: 1.02 - 1.15, $p = 8.25 \times 10^{-3}$) (**Fig 2b**).

217 **Discussion**

218 This study employed the MR method to estimate the causal effects of GDM and GH on
219 the risk of PPD. By utilizing both univariable MR and multivariable MR, we identified
220 an independent causal impact of genetically predicted GDM on the risk of PPD (IVW
221 OR = 1.09, 95% CI: 1.03 - 1.14, $p = 1.24 \times 10^{-3}$), and found clear evidence of an
222 independent causal effect of GH on PPD risk (IVW OR = 1.08, 95% CI: 1.01 - 1.15, p
223 $= 0.01$).

224 Previous observational studies have shown that both GDM and GH increase the
225 risk of PPD. In a 4-year cohort study involving 2,477 females, GDM was linked to a
226 4.62-fold increased risk of PPD (95%CI 1.26 - 16.98) [22]. Similarly, a study from the
227 Kuopio Birth Cohort, encompassing 1,066 women without prior mental health concerns,
228 found GDM increased the likelihood of PPD symptoms with an OR of 2.23 (95%CI
229 1.23 - 4.05) after adjusting for various maternal and neonatal factors [23]. This
230 suggested that GDM was a potential independent risk factor for PPD. A separate cross-

231 sectional study in Brazil between 2015 and 2017, with 168 postpartum women, found
232 that 23.8% displayed depressive symptoms, with a significant correlation between PPD
233 and HDP (Spearman [rs] 0.219; P = 0.004) [24]. Lastly, in the Rhea mother-child cohort
234 in Greece, comprising 1,037 women, GH was significantly linked to increased PPD
235 symptoms (β coefficient 1.86, 95% CI 0.32 - 3.41) [25]. However, previous
236 observational studies had limitations, such as small sample sizes and confounding
237 factors, necessitating a more robust method to infer the causal relationship between
238 GDM, GH, and PPD risk.

239 Our MR study offered a novel and comprehensive evaluation of the causal link
240 between GDM, GH, and PPD. Unlike traditional observational epidemiological
241 approaches, MR can more robustly suggest causality, potentially circumventing the
242 pitfalls of unmeasured confounders and reverse causation. The causative estimates
243 derived from our analysis aligned with previous observational studies on GDM, GH,
244 and PPD. Utilizing two GWAS datasets, we pinpointed 34 and 45 SNPs and employed
245 five models: IVW, weighted median, MR-Egger, simple mode, and weighted mode.
246 Our IVW analysis revealed that GDM and GH were risk factors for PPD, with a 1 SD
247 increase in GDM leading to a 9% increased risk of PPD, as determined by weighted
248 median and weighted mode. Additionally, we found that for every 1 SD increase in GH,
249 the risk of PPD increased by approximately 8%.

250 The mechanisms underlying the relationship between GDM, GH, and the risk of
251 PPD remain incompletely understood. GDM may act as a physiological stressor,
252 triggering neuroendocrine dysregulation and inflammatory responses that predispose

253 women to depressive symptoms [2]. Insulin resistance, a hallmark of GDM, has been
254 associated with altered neurotransmitter function, potentially contributing to mood
255 disturbances [26]. Metabolic perturbations accompanying GDM could disrupt the
256 hypothalamic-pituitary-adrenal (HPA) axis, leading to aberrant cortisol signaling
257 implicated in depression pathophysiology [27]. A recent rat study demonstrated that
258 GDM disrupts tryptophan metabolism and alters gut microbiota composition, providing
259 a putative physiological basis for PPD [28]. Women who experience pregnancy
260 complications, such as hypertension, are at an increased risk of physical morbidity in
261 the postpartum period, which may contribute to elevated rates of PPD [25].
262 Preeclampsia is characterized by excessive inflammatory responses, with elevated
263 levels of pro-inflammatory cytokines like IL-6, IL-8, TNF-alpha, and C-reactive protein
264 associated with PPD development [29–33]. Genetic factors may also play a role, as
265 specific polymorphisms, such as MTHFR C677T, 5-HTT, and ESR, are linked to
266 increased susceptibility to preeclampsia and PPD [34–37]. Alterations in folate
267 metabolism due to MTHFR gene variants may influence serum folate levels, potentially
268 increasing the risk of PPD [38,39].

269 A key strength of our study was utilizing a two-sample Mendelian randomization
270 design, which mitigates potential biases from confounding when assessing the causal
271 relationships between GDM, GH, and PPD. Additionally, our approach may have
272 minimized the risk of population stratification bias by focusing solely on individuals of
273 European ancestry.

274 Our study had several limitations. Primarily, participants were exclusively sourced

275 from a European ancestry GWAS database, necessitating validation of causal
276 associations in more diverse populations. Additionally, the absence of weight-stratified
277 summary data for GDM and GH exposures hinders the examination of their relationship
278 with PPD risk. Factors such as age and pre-existing health conditions could confound
279 our results; however, the limited genetic data on these variables posed challenges for
280 comprehensive adjustments.

281 Future research should prioritize understanding the biological mechanisms
282 underlying the causal relationships between GDM, GH, and PPD. Investigations into
283 neuroendocrine dysregulation and inflammatory responses could provide insights into
284 these pathways. Longitudinal cohort studies are needed to track the progression from
285 GDM and GH to PPD over time, which would clarify temporal dynamics and mediating
286 factors. Expanding research to diverse populations will help ensure the findings'
287 generalizability. Additionally, randomized controlled trials should test targeted
288 interventions for managing GDM and GH during pregnancy to assess their
289 effectiveness in reducing PPD incidence. Further genetic studies with larger GWAS
290 datasets could identify additional SNPs, enhancing our understanding of genetic risk
291 factors.

292 Updating prenatal care guidelines to include routine screening for GDM and GH is
293 essential for comprehensive assessments that could reduce postpartum depression PPD
294 risk. Integrated care models, involving obstetricians, endocrinologists, and mental
295 health professionals, should be developed to offer holistic care and timely interventions.
296 Enhancing education and training for healthcare professionals, particularly nurses and

297 midwives, is crucial to recognizing and addressing GDM, GH, and PPD early. Public
298 health campaigns can raise awareness of the risks associated with these conditions,
299 encouraging early care and adherence to management plans. Additionally, policy
300 development should focus on funding research in maternal health, emphasizing
301 preventing and managing GDM, GH, and PPD through innovative projects and
302 improved healthcare infrastructure.

303 **Conclusions**

304 Our two-sample MR analysis offered genetic evidence supporting the causal role of
305 GDM and GH in the onset of PPD. These findings underscored the necessity for nurses
306 and healthcare professionals to provide tailored clinical care, emphasizing education,
307 support, and early intervention to mitigate PPD risk in individuals with a history of
308 GDM and GH.

309

310 **Acknowledgements**

311 We thank Associate Professor Rongzu Nie from Zhengzhou University of Light
312 Industry for his valuable suggestions on the manuscript.

313 **References**

314 1. Stewart DE, Vigod SN. Postpartum Depression: Pathophysiology, Treatment, and
315 Emerging Therapeutics. *Annu Rev Med*. 2019;70: 183–196. doi:10.1146/annurev-

316 med-041217-011106

- 317 2. O'Hara MW, McCabe JE. Postpartum depression: current status and future
318 directions. *Annu Rev Clin Psychol.* 2013;9: 379–407. doi:10.1146/annurev-
319 clinpsy-050212-185612
- 320 3. Association AP. Diagnostic and Statistical Manual of Mental Disorders, Text
321 Revision Dsm-5-tr. 5th edition. Washington, DC: Amer Psychiatric Pub Inc; 2022.
- 322 4. Stewart DE, Vigod S. Postpartum Depression. *N Engl J Med.* 2016;375: 2177–
323 2186. doi:10.1056/NEJMcp1607649
- 324 5. Meng J, Du J, Diao X, Zou Y. Effects of an evidence-based nursing intervention
325 on prevention of anxiety and depression in the postpartum period. *Stress Health.*
326 2022;38: 435–442. doi:10.1002/smi.3104
- 327 6. Zhu Y, Zhang C. Prevalence of Gestational Diabetes and Risk of Progression to
328 Type 2 Diabetes: a Global Perspective. *Curr Diab Rep.* 2016;16: 7.
329 doi:10.1007/s11892-015-0699-x
- 330 7. Arafa A, Dong J-Y. Gestational diabetes and risk of postpartum depressive
331 symptoms: A meta-analysis of cohort studies. *J Affect Disord.* 2019;253: 312–316.
332 doi:10.1016/j.jad.2019.05.001
- 333 8. Meltzer-Brody S, Maegbaek ML, Medland SE, Miller WC, Sullivan P, Munk-
334 Olsen T. Obstetrical, pregnancy and socio-economic predictors for new-onset

- 335 severe postpartum psychiatric disorders in primiparous women. *Psychol Med.*
336 2017;47: 1427–1441. doi:10.1017/S0033291716003020
- 337 9. Gupta V, Walia GK, Sachdeva MP. ‘Mendelian randomization’: an approach for
338 exploring causal relations in epidemiology. *Public Health.* 2017;145: 113–119.
339 doi:10.1016/j.puhe.2016.12.033
- 340 10. Davies NM, Holmes MV, Davey Smith G. Reading Mendelian randomisation
341 studies: a guide, glossary, and checklist for clinicians. *BMJ.* 2018;362: k601.
342 doi:10.1136/bmj.k601
- 343 11. Sekula P, Del Greco M F, Pattaro C, Köttgen A. Mendelian Randomization as an
344 Approach to Assess Causality Using Observational Data. *J Am Soc Nephrol.*
345 2016;27: 3253–3265. doi:10.1681/ASN.2016010098
- 346 12. Savage JE, Jansen PR, Stringer S, Watanabe K, Bryois J, de Leeuw CA, et al.
347 Genome-wide association meta-analysis in 269,867 individuals identifies new
348 genetic and functional links to intelligence. *Nat Genet.* 2018;50: 912–919.
349 doi:10.1038/s41588-018-0152-6
- 350 13. Burgess S, Butterworth A, Thompson SG. Mendelian randomization analysis with
351 multiple genetic variants using summarized data. *Genet Epidemiol.* 2013;37: 658–
352 665. doi:10.1002/gepi.21758
- 353 14. Lu L, Wan B, Sun M. Mendelian randomization identifies age at menarche as an
354 independent causal effect factor for gestational diabetes mellitus. *Diabetes,*

- 355 Obesity and Metabolism. 2023;25: 248–260. doi:10.1111/dom.14869
- 356 15. Bowden J, Davey Smith G, Burgess S. Mendelian randomization with invalid
357 instruments: effect estimation and bias detection through Egger regression.
358 International Journal of Epidemiology. 2015;44: 512–525.
359 doi:10.1093/ije/dyv080
- 360 16. Bowden J, Davey Smith G, Haycock PC, Burgess S. Consistent Estimation in
361 Mendelian Randomization with Some Invalid Instruments Using a Weighted
362 Median Estimator. Genet Epidemiol. 2016;40: 304–314. doi:10.1002/gepi.21965
- 363 17. Z J, R W, L J, L W, Y L. Causal relationship between sarcopenia with
364 osteoarthritis and the mediating role of obesity: a univariate, multivariate, two-
365 step Mendelian randomization study. BMC geriatrics. 2024;24.
366 doi:10.1186/s12877-024-05098-8
- 367 18. Brion M-JA, Shakhbazov K, Visscher PM. Calculating statistical power in
368 Mendelian randomization studies. Int J Epidemiol. 2013;42: 1497–1501.
369 doi:10.1093/ije/dyt179
- 370 19. Jiang M, Yan W, Zhang Y, Lu Z, Lu T, Zhang D, et al. Phosphodiesterase and
371 psychiatric disorders: a two-sample Mendelian randomization study. Journal of
372 Translational Medicine. 2023;21: 560. doi:10.1186/s12967-023-04368-0
- 373 20. Verbanck M, Chen C-Y, Neale B, Do R. Detection of widespread horizontal
374 pleiotropy in causal relationships inferred from Mendelian randomization between

- 375 complex traits and diseases. *Nat Genet.* 2018;50: 693–698. doi:10.1038/s41588-
376 018-0099-7
- 377 21. Liao Q, He J, Tian F-F, Bi F-F, Huang K. A causal relationship between leukocyte
378 telomere length and multiple sclerosis: A Mendelian randomization study. *Front*
379 *Immunol.* 2022;13: 922922. doi:10.3389/fimmu.2022.922922
- 380 22. Hinkle SN, Buck Louis GM, Rawal S, Zhu Y, Albert PS, Zhang C. A longitudinal
381 study of depression and gestational diabetes in pregnancy and the postpartum
382 period. *Diabetologia.* 2016;59: 2594–2602. doi:10.1007/s00125-016-4086-1
- 383 23. Ruohomäki A, Toffol E, Upadhyaya S, Keski-Nisula L, Pekkanen J, Lampi J, et
384 al. The association between gestational diabetes mellitus and postpartum
385 depressive symptomatology: A prospective cohort study. *J Affect Disord.*
386 2018;241: 263–268. doi:10.1016/j.jad.2018.08.070
- 387 24. Strapasson MR, Ferreira CF, Ramos JGL. Associations between postpartum
388 depression and hypertensive disorders of pregnancy. *Int J Gynaecol Obstet.*
389 2018;143: 367–373. doi:10.1002/ijgo.12665
- 390 25. Koutra K, Vassilaki M, Georgiou V, Koutis A, Bitsios P, Kogevinas M, et al.
391 Pregnancy, perinatal and postpartum complications as determinants of postpartum
392 depression: the Rhea mother-child cohort in Crete, Greece. *Epidemiol Psychiatr*
393 *Sci.* 2018;27: 244–255. doi:10.1017/S2045796016001062
- 394 26. Kan C, Silva N, Golden SH, Rajala U, Timonen M, Stahl D, et al. A systematic

- 395 review and meta-analysis of the association between depression and insulin
396 resistance. *Diabetes Care*. 2013;36: 480–489. doi:10.2337/dc12-1442
- 397 27. Moulton CD, Pickup JC, Ismail K. The link between depression and diabetes: the
398 search for shared mechanisms. *Lancet Diabetes Endocrinol*. 2015;3: 461–471.
399 doi:10.1016/S2213-8587(15)00134-5
- 400 28. Zhao R, Zhou Y, Shi H, Ye W, Lyu Y, Wen Z, et al. Effect of Gestational Diabetes
401 on Postpartum Depression-like Behavior in Rats and Its Mechanism. *Nutrients*.
402 2022;14: 1229. doi:10.3390/nu14061229
- 403 29. Jonsson Y, Rubèr M, Matthiesen L, Berg G, Nieminen K, Sharma S, et al.
404 Cytokine mapping of sera from women with preeclampsia and normal pregnancies.
405 *J Reprod Immunol*. 2006;70: 83–91. doi:10.1016/j.jri.2005.10.007
- 406 30. Khandaker GM, Pearson RM, Zammit S, Lewis G, Jones PB. Association of
407 serum interleukin 6 and C-reactive protein in childhood with depression and
408 psychosis in young adult life: a population-based longitudinal study. *JAMA*
409 *Psychiatry*. 2014;71: 1121–1128. doi:10.1001/jamapsychiatry.2014.1332
- 410 31. Sharma A, Satyam A, Sharma JB. Leptin, IL-10 and inflammatory markers (TNF-
411 alpha, IL-6 and IL-8) in pre-eclamptic, normotensive pregnant and healthy non-
412 pregnant women. *Am J Reprod Immunol*. 2007;58: 21–30. doi:10.1111/j.1600-
413 0897.2007.00486.x
- 414 32. Catarino C, Santos-Silva A, Belo L, Rocha-Pereira P, Rocha S, Patrício B, et al.

- 415 Inflammatory disturbances in preeclampsia: relationship between maternal and
416 umbilical cord blood. *J Pregnancy*. 2012;2012: 684384. doi:10.1155/2012/684384
- 417 33. Liu H, Zhang Y, Gao Y, Zhang Z. Elevated levels of Hs-CRP and IL-6 after
418 delivery are associated with depression during the 6 months post partum.
419 *Psychiatry Res*. 2016;243: 43–48. doi:10.1016/j.psychres.2016.02.022
- 420 34. Wu X, Yang K, Tang X, Sa Y, Zhou R, Liu J, et al. Folate metabolism gene
421 polymorphisms MTHFR C677T and A1298C and risk for preeclampsia: a meta-
422 analysis. *J Assist Reprod Genet*. 2015;32: 797–805. doi:10.1007/s10815-014-
423 0408-8
- 424 35. Yang Y, Fang M, Du X, Hu Z. Lucky gene 5-HTTLPR and postpartum depression:
425 A systematic review. *Neuro Endocrinol Lett*. 2017;38: 316–320.
- 426 36. Yin G, Zhu X, Guo C, Yang Y, Han T, Chen L, et al. Differential expression of
427 estradiol and estrogen receptor α in severe preeclamptic pregnancies compared
428 with normal pregnancies. *Mol Med Rep*. 2013;7: 981–985.
429 doi:10.3892/mmr.2013.1262
- 430 37. Ryan J, Scali J, Carrière I, Peres K, Rouaud O, Scarabin P-Y, et al. Estrogen
431 receptor alpha gene variants and major depressive episodes. *J Affect Disord*.
432 2012;136: 1222–1226. doi:10.1016/j.jad.2011.10.010
- 433 38. Yan J, Liu Y, Cao L, Zheng Y, Li W, Huang G. Association between Duration of
434 Folic Acid Supplementation during Pregnancy and Risk of Postpartum Depression.

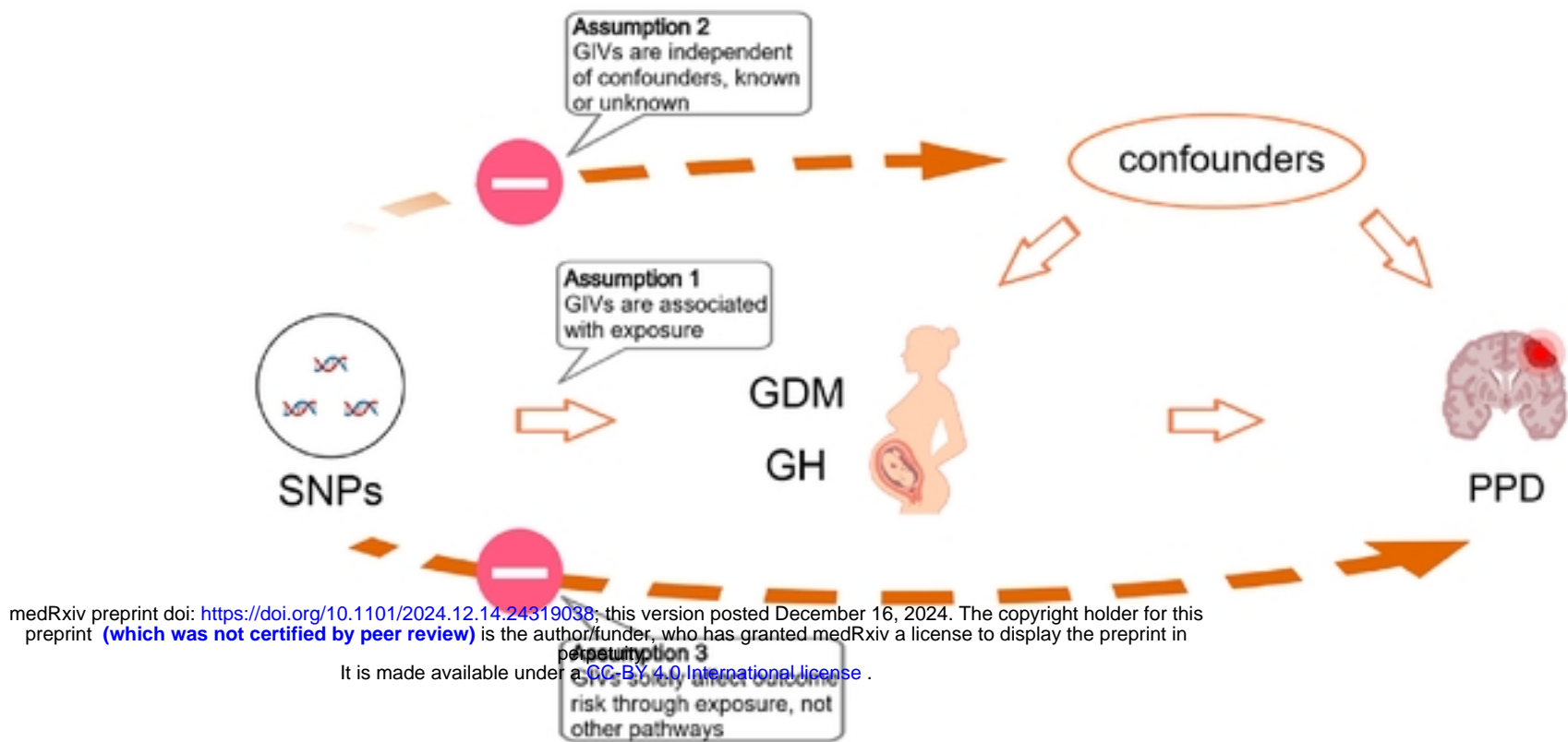
435 Nutrients. 2017;9: 1206. doi:10.3390/nu9111206

436 39. Lewis SJ, Araya R, Leary S, Smith GD, Ness A. Folic acid supplementation during
437 pregnancy may protect against depression 21 months after pregnancy, an effect
438 modified by MTHFR C677T genotype. Eur J Clin Nutr. 2012;66: 97–103.
439 doi:10.1038/ejcn.2011.136

440 **Supporting information**

441 S1 Table. Independent SNPs associated with GDM

442 S2 Table. Independent SNPs associated with GH



medRxiv preprint doi: <https://doi.org/10.1101/2024.12.14.24319038>; this version posted December 16, 2024. The copyright holder for this preprint (which was not certified by peer review) is the author/funder, who has granted medRxiv a license to display the preprint in perpetuity. It is made available under a [CC-BY 4.0 International license](https://creativecommons.org/licenses/by/4.0/).

Fig. 1 The Mendelian randomisation framework shows a causal relationship between GDM, GH, and PPD. GDM, gestational diabetes mellitus; GH, gestational hypertension; PPD, postpartum depression; SNPs, single nucleotide polymorphisms; GIVs, genetic instrument variables

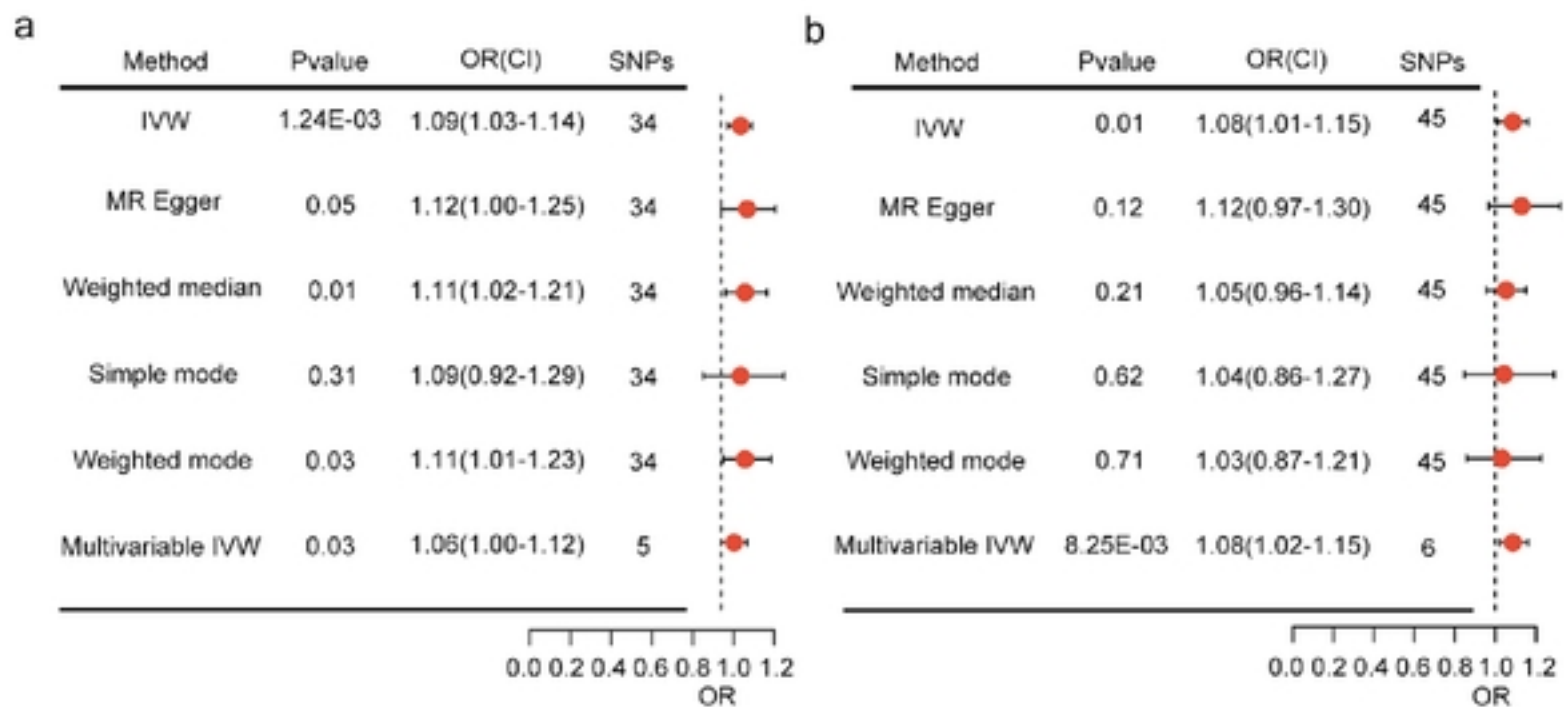


Fig. 2 The OR and CI presented in the study demonstrate the impact of GDM and GH on the risk of PPD. The study compares the outcomes of MR analyses carried out using various methods. (a) Gestational diabetes mellitus; (b) Gestational hypertension. OR,

odds ratios; CI, confidence intervals

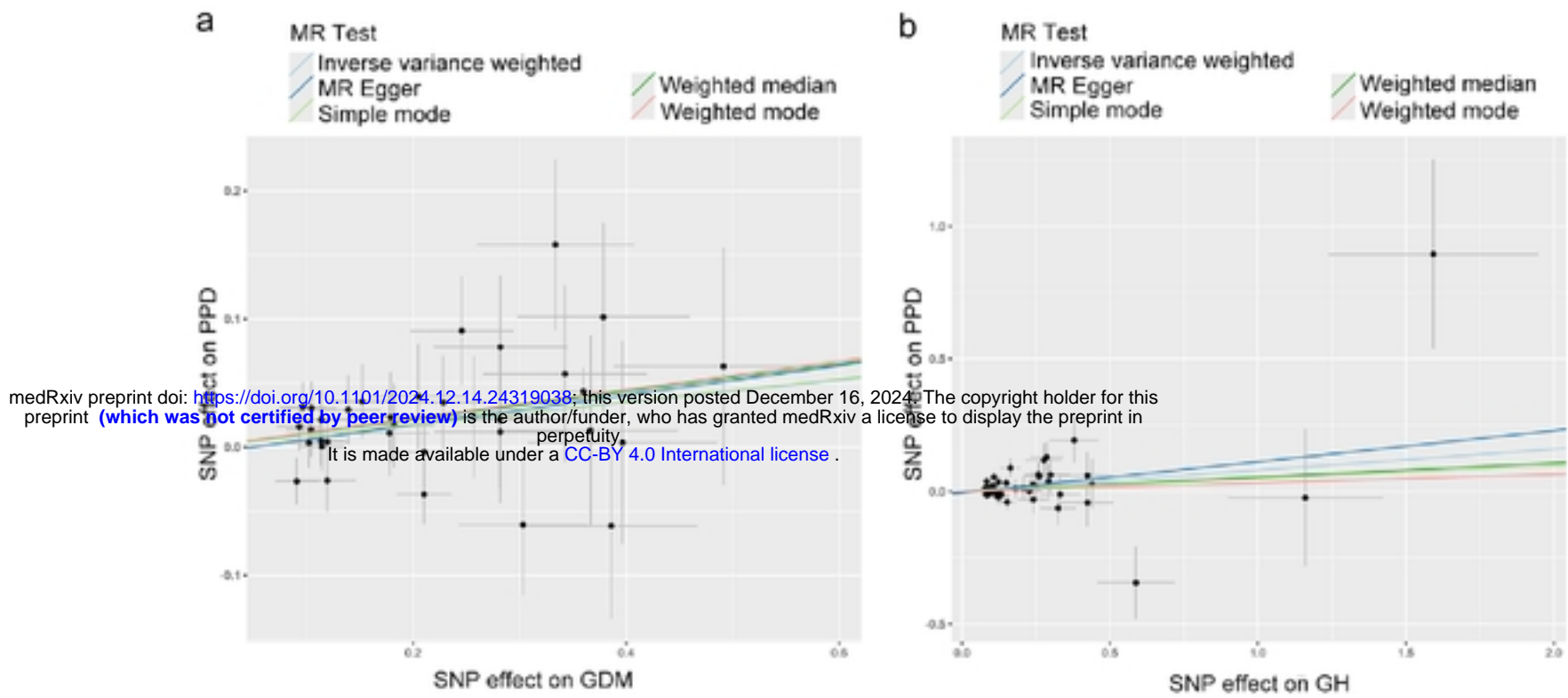


Fig. 3 The scatter plot showcases the effect of GDM and GH associated with SNP on PPD, represented on the log-odds scale. The lines' slopes indicate the causal association for each method

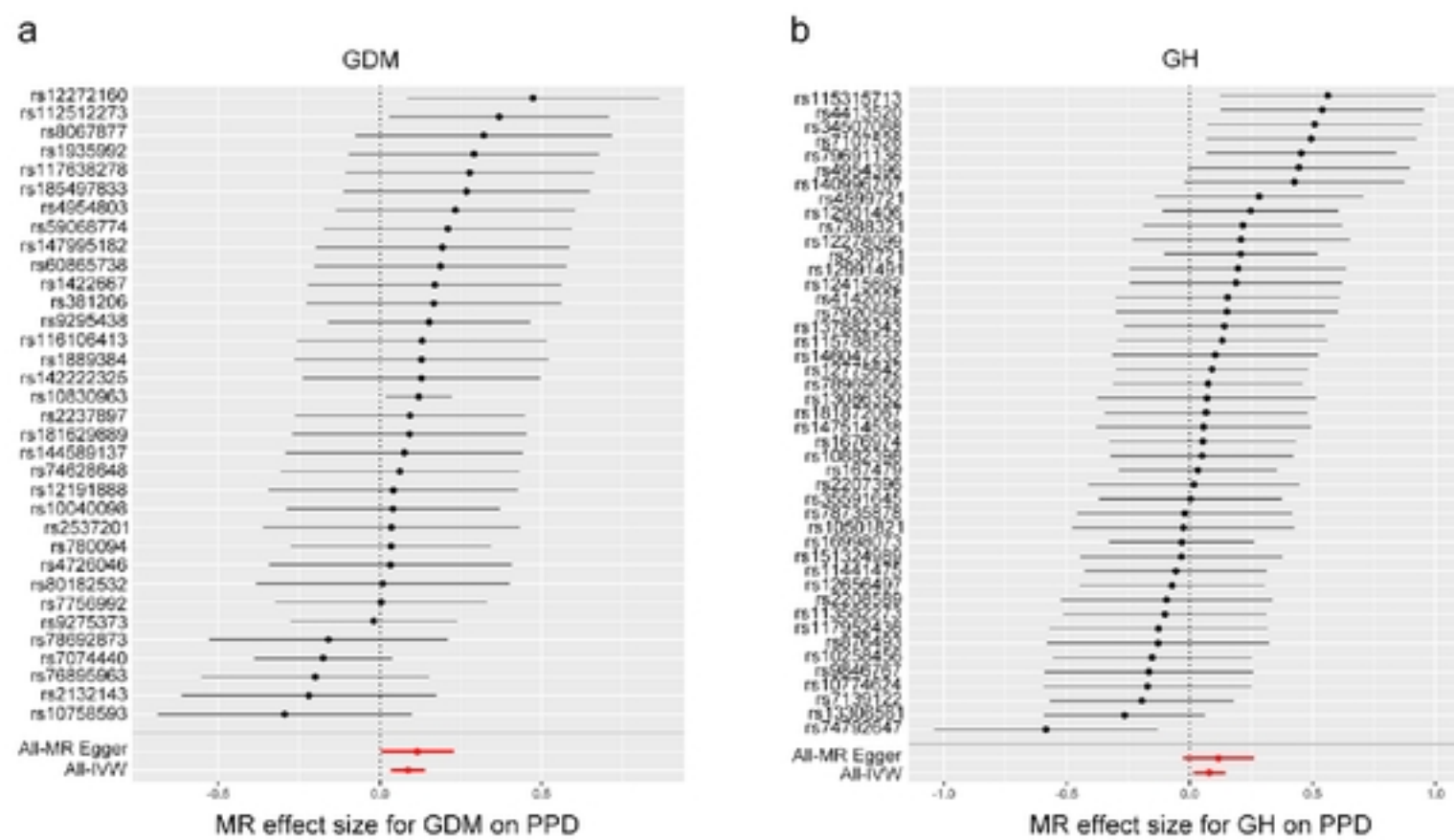


Fig. 4 A forest plot is utilized to visually represent the causal effect of each SNP on the risk of PPD

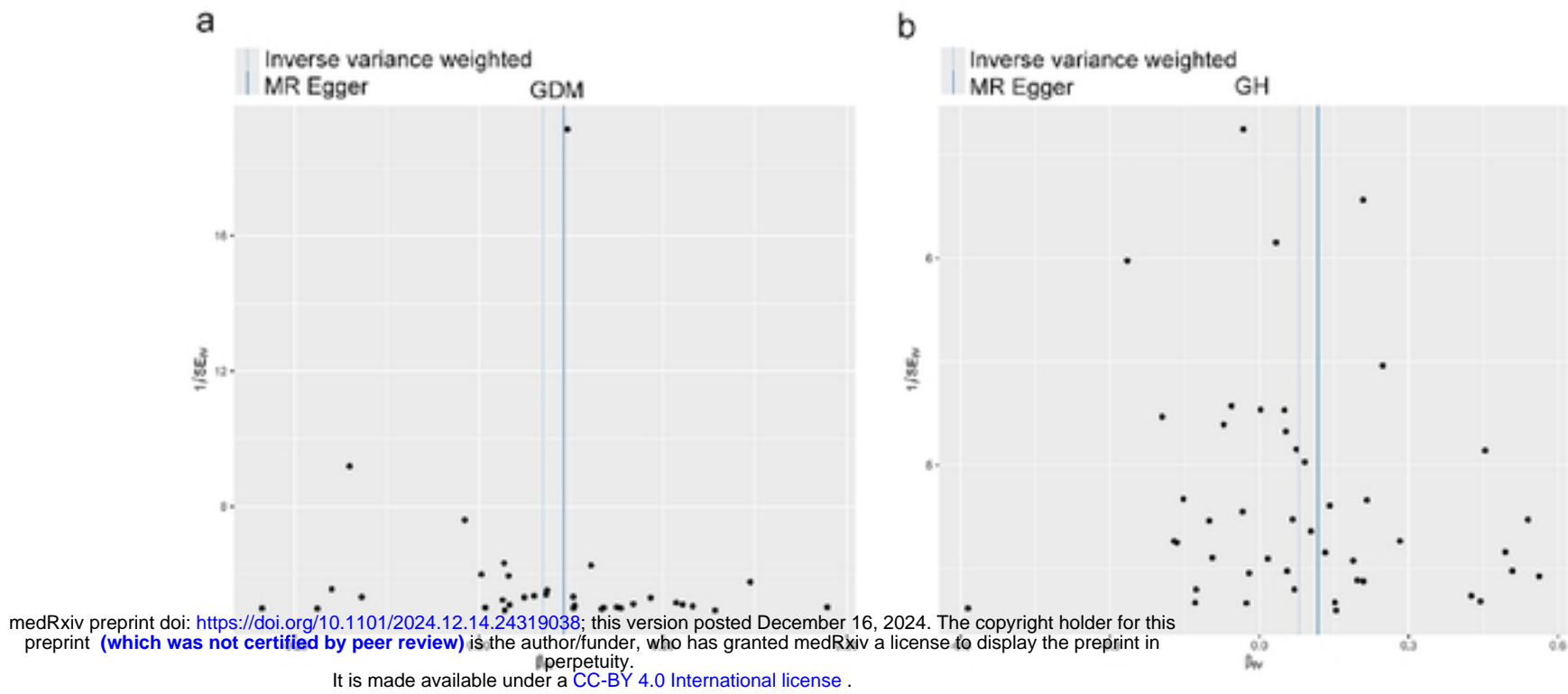


Fig. 5 Funnel plots are utilized to visually represent the general heterogeneity of MR estimates regarding the impact of GDM and GH on the risk of PPD

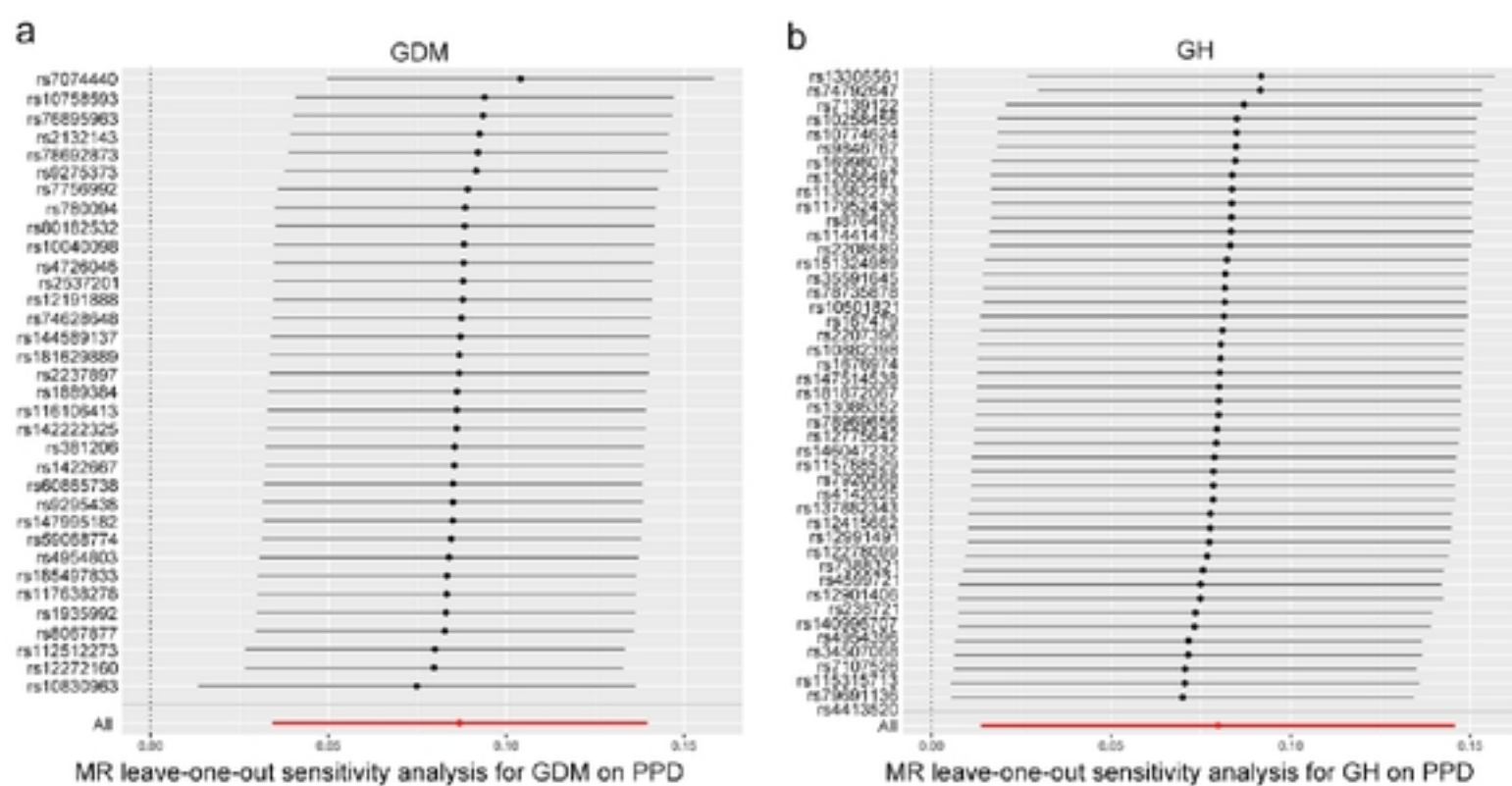


Fig. 6 A leave-one-out plot is generated to visually illustrate the causal effect of GDM and GH on the risk of PPD by systematically excluding one single nucleotide polymorphism at a time