

1 **The DiaGame Study: Multimodal Data Collection in Free-Living** 2 **Conditions Using Consumer-Level Wearable Devices and Apps in** 3 **People with Diabetes**

4 Ryan de Vries^{1*†}, Edouard F.H. Reinders^{2,5*}, Danilo Ferreira de Carvalho³, Elma
5 M.W.L. Cruys – Van de Meulengraaf², Pieter M.E. van Gorp⁴, Pleun C.M. Wouters -
6 van Poppel², Uzay Kaymak³, Peter A.J. Hilbers¹, Natal A.W. van Riel^{1‡}, Harm R.
7 Haak^{2,5‡}

8 * Shared first-author

9 ‡Equal contributions

10 †Corresponding author: r.d.vries@tue.nl

11 ¹Department of Biomedical Engineering, Eindhoven University of Technology, Eindhoven, The Netherlands

12 ²Máxima MC, Department of Internal Medicine, Eindhoven/Veldhoven, The Netherlands

13 ³Jheronimus Academy of Data Science, Eindhoven University of Technology, 's-Hertogenbosch, The Netherlands

14 ⁴Department of Industrial Engineering & Innovation Sciences, Eindhoven University of Technology, Eindhoven, The
15 Netherlands

16 ⁵Maastricht University, CAPHRI School for Public Health and Primary Care, Ageing and Long-Term Care, Maastricht, The
17 Netherlands

18 **Abstract**

19 The everlasting interest in precision medicine has instigated a need for patient-specific
20 multidimensional data collection. By leveraging consumer-level wearable devices and
21 applications we can support this need by collecting multimodal data in uncontrolled free-
22 living conditions. We used a continuous glucose monitor, a smartwatch with in-house
23 developed application, and a smartphone application over a period of 14 days to collect data
24 from 60 participants with diabetes. Data were collected on 77,683 CGM measurements,
25 4,073 moods, 3,517 meals, 1,394 insulin injections, and 1,364 bouts of physical activity.
26 Participants were able to effectively use the devices and applications, with 45 participants
27 reporting data on all modalities and all participants reporting data on at least two modalities
28 (in addition to the data collected from the smartwatch's internal sensors). These findings
29 highlight the efficiency and effectiveness of consumer-level wearable devices to collect data
30 from the comfort of the people's homes. Thereby, facilitating the need for a cost-effective
31 and scalable approach for precision monitoring to the public.

32 **NOTE: This preprint reports new research that has not been certified by peer review and should not be used to guide clinical practice.**

33 **Introduction**

34 The emergence of precision or personalized medicine, which seeks to improve
35 diagnosis, prediction, prevention, and treatment by focusing on the individual rather
36 than on groups of people, has instigated a need for patient-specific multidimensional
37 data to evaluate an individual's health, wellbeing, and environment. Diabetes
38 mellitus, a chronic endocrine disease characterized by chronically elevated blood
39 glucose levels, is one example of a disease for which precision medicine approaches
40 can prove to be beneficial, due to the recognized heterogeneity in its etiology, clinical
41 presentation, and pathogenesis¹. The resulting need for patient-specific
42 multidimensional data collection (precision monitoring) in people with diabetes has
43 been highlighted in the latest American Diabetes Association (ADA) and European
44 Association for the Study of Diabetes (EASD) consensus, along with recent
45 publications, that advocated for precision monitoring methods as the next crucial
46 step towards precision medicine for diabetes^{1,2}. Precision medicine in the field of
47 diabetes research focuses on elucidating pathophysiological processes (molecular
48 and environmental), and consequently the heterogeneity in glycemic dynamics, that
49 underly the disease. Although the primary cause of dysregulated glycemic dynamics
50 concerns defects in at least one physiological pathway, multiple coherent factors
51 including self-regulated behavior (e.g., dietary intake and physical activity) and
52 health (e.g., medication and psychological status) also influence glycemic dynamics.
53 Furthermore, lifestyle, defined by the long-term combination of these variables,
54 impacts the risk for future complications³⁻⁷.

55 To capture glycemic variations, gain insight into the underlying glycemic effects of
56 lifestyle, and ultimately monitor disease progression, all at an individual level, the
57 availability of data is imperative. Although data measured in clinical and research

58 settings are well controlled, detailed data collection over weeks or months of time is
59 unfeasible from these settings and difficult to scale to large cohorts. Consequently, a
60 transition must be made towards data measured in the comfort of people's homes
61 and throughout their daily lives. Furthermore, data from free-living conditions are
62 representative of self-regulated behavior and habits, while measurements in
63 controlled clinical settings are not, and these data offer the opportunity to capture the
64 day-to-day glycemic variability typical for diabetes. The shift from clinical settings
65 towards free-living conditions, to collect data for healthcare and research purposes,
66 is enabled by the advent and enhancement of wearable devices. The continuous
67 glucose monitor (CGM) has already provided tremendous insight into glycemic
68 control for clinicians and people with diabetes⁸. Furthermore, smartphones and
69 smartwatches have been shown to be promising for the monitoring of lifestyle
70 variables (i.e., assessment of physical activity, diet, and psychological stress)^{9,10}.

71 The use of wearable devices in diabetic populations for data collection in free-living
72 conditions has, except for a few studies, been mostly limited to the effects on blood
73 glucose levels of physical activity, diet, or psychological stress alone. The limited
74 number of studies that simultaneously collected data on a broader range of variables
75 associated with glycemic variability, have almost all been conducted with people with
76 type 1 diabetes. Marling & Bunescu (2020) collected data in 12 participants with type
77 1 diabetes for eight weeks on blood glucose levels (CGM), dietary intake, physical
78 activity, usage of insulin analogues and other antidiabetic medication, and
79 psychological status in free-living conditions¹¹. Other studies such as the *D1NAMO*
80 *project* (nine participants with type 1 diabetes, four-day study period) have collected
81 data on electrocardiograms, breathing, accelerometers, CGMs, and annotated food
82 pictures¹². The *ShanghaiT1DM* & *ShanghaiT2DM* datasets (12 participants with type

83 1 diabetes and 100 participants with type 2 diabetes, study period up to 14 days)
84 included dietary intake, insulin injections, and CGM data¹³. Nevertheless, while these
85 studies collected multimodal data in free-living conditions in people with type 1
86 diabetes, similar studies including people with type 2 diabetes are rare. Zahedani et
87 al. (2023) used a CGM, a proprietary app for food logging, and heart rate data from a
88 smartwatch to demonstrate that app-based lifestyle recommendations can improve
89 eating habits, markers of glycemic variability, and weight in a predominantly healthy
90 and prediabetic cohort (N = 1,066, including 94 subjects with non-insulin-treated type
91 2 diabetes)¹⁴. Similarly, Pai et al. (2024) collected data from a CGM, app-based food
92 logging, and accelerometer-derived step count to stratify postprandial peaks into
93 normal and elevated categories and highlighted the relationship between post-meal
94 steps and a reduced postprandial glucose response in Hispanic/Latino adults (N =
95 36, including 14 subjects with non-insulin-treated type 2 diabetes)¹⁵.

96 Data collection in free-living conditions can be burdensome for the participants and
97 researchers, especially when using analog data collection methods (i.e., paper
98 logbooks and questionnaires). The data collection process often requires data
99 digitization, structuring, and manual preprocessing. Some studies also relied on
100 participants or experts to acquire information on dietary macronutrient composition.
101 Dubosson, et al. (2018) used picture-based food annotation by a dietitian, while
102 Marling & Bunescu (2020) relied on patient estimates to infer carbohydrate intake.

103 By integrating multiple wearable devices, and applications, some of the burdens of
104 data collection in free-living conditions can be alleviated. The use of wearable
105 devices negates the need for data inference and digitization. Moreover, the use of
106 specifically consumer-level wearable devices, rather than research-dedicated
107 devices, offers a cost-effective, scalable, and readily available method of collecting

108 data due to the widespread ownership of smartphones and the increasing popularity
109 of smartwatches and fitness trackers. The consumer-level wearable devices, used in
110 this study, included a CGM for continuous blood glucose measurements, a
111 smartphone application to collect patient-reported dietary intake and physical activity,
112 and a smartwatch to measure heart rate, acceleration, and step counts. The
113 smartwatch is supplemented with an in-house developed application (publicly
114 available) to allow participants to self-report mood and insulin usage. This application
115 also incorporates a nudging mechanism, using vibrations and visual prompts on the
116 screen, to encourage participants to report information as requested by the research
117 team. The use of consumer-level wearable devices ultimately enables large-scale,
118 patient-centered, and researcher-independent personalized data collection.

119 This article describes how commercially available consumer-level wearable devices
120 and apps were used to collect data in free-living conditions in people with diabetes,
121 predominantly type 2 diabetes. Subsequently, we assessed the feasibility of using
122 wearable devices in this study population, which is typically older, and analyzed the
123 effectiveness of our approach in terms of both the quantity and quality of the data
124 collected. These data included measurements of blood glucose levels, detailed
125 dietary intake, physical activity, insulin use, and mood over a 14-day period,
126 supplemented with demographics and clinical measurements. Ultimately, we aim to
127 showcase the ease and extent to which multimodal data can be collected in free-
128 living conditions using consumer-level wearable devices and applications in a
129 diabetic population (predominantly type 2).

130

Results

131

Participant Characteristics

132

Upon study completion, 59 participants (35 males and 24 females) were included

133

(excluding one dropout due to multiple CGM malfunctions). For one participant CGM

134

data of her own prescribed CGM was voluntarily provided due to device malfunction.

135

51 participants were diagnosed with type 2 diabetes and eight with type 1 diabetes,

136

with respective mean ages of 69.1 years (SD 7.1) and 54.6 years (SD 16.9), mean

137

BMI of 30.1 kg/m² (SD 4.9) and 25.4 kg/m² (SD 3.3), mean diabetes durations of

138

20.5 years (SD 7.3) and 26.6 years (SD 13.4), mean HbA1c's of 61.5 mmol/mol (SD

139

11.7) and 63.4 mmol/mol (SD 15.0), and mean time in ranges (3.9-10.0 mmol/L)

140

during the study of 66.8% (SD 22.7) and 62.7% (SD 21.6). For a complete overview

141

of participant characteristics (e.g., insulin and medications use, anthropometric

142

measurements, and fasting blood values), stratified by diabetes type, see Table 1.

143

Data Quantity

144

The set of wearable devices provided a large extent of multimodal data (Fig. 1

145

showcases an example of four days of collected data). Data in Fig. 1 includes sensor

146

measurements of interstitial glucose concentrations and heart rate as well as self-

147

reported mood, insulin analogue injections, dietary intake (only carbohydrate content

148

is shown here), and physical activity. The data not only provided insight into the day-

149

to-day glucose variability at an individual level, but glycemic variations can also be

150

associated with reported self-regulated behavior. In this example, rises in blood

151

glucose levels were associated with high-carbohydrate meals and drops with

152

adequate preprandial insulin administration or periods of reported physical activity

153

with an elevated heart rate. In total, the dataset includes 77,683 CGM

154

measurements, 4,073 self-reported moods, 3,517 meals, 1,394 insulin injections,

155 and 1,364 bouts of physical activity. Excluding days of study visits, interstitial glucose
156 levels were measured (every 15 minutes) in 97·5% of measurement instances. A
157 daily energy intake of at least 1,000 kcal/day was reported on 80·6% of study days
158 (excluding a single participant who was known to have started a crash-diet prior to
159 study participation), while at least 1,000 steps a day were recorded on 93·0% of
160 study days (excluding one wheelchair-bound participant). 96·6% of participants self-
161 reported their mood, and 84·1% of insulin-dependent participants (n=44) reported
162 insulin doses. 84·5% of participants had self-reported physical activity. 45
163 participants (76·3%) managed to self-report data of every modality (including insulin
164 doses when prescribed). Further analysis demonstrated participants were
165 consistently engaged (i.e. they reported data) with the applications and smartwatch
166 during the study period, only with a slight decrease in physical activity reporting after
167 the second and third study days (Supplemental Fig. S3). The number of days
168 participants reported data on each modality varied between participants (shown in
169 Fig. 2). Excluding visit days, dietary intake had been reported for 11 to 13 days by all
170 participants (67·8% with a daily energy intake greater than 1,000 kcal/day). The
171 number of days with bouts of physical activity, which had a qualitatively similar
172 distribution to the number of days with at least 3,000 steps, ranged from between
173 nine and 13 days (total of 54·2%) to only one or no day (total of 27·1%). Mood was
174 self-reported anywhere between zero (3·4%) and 13 (22·0%) days, with more than
175 half (50·8%) of the participants reporting mood for at least ten days. 70·5% of
176 insulin-dependent participants reported insulin usage for 11 to 13 days, while seven
177 out of 44 (15·9%) of these participants (only one of these seven used rapid-acting
178 insulin) did not report insulin usage at all.

179

Data Quality

180 Evaluation of the quality of the patient-reported data suggested mixed results, as
181 data was consistently reported but not always to the extent that it matched our
182 expectations of a complete day of lifestyle events. A comparison of reported dietary
183 intake and daily insulin doses to recommended guidelines and health records
184 demonstrated discrepancies for a subset of participants. Firstly, the reported daily
185 energy intake (shown in Fig. 3, with participants ordered by age), varied considerably
186 between participants from 55·2 kcal/day to 4,766 kcal/day. The mean energy intake
187 (excluding outliers below 1,000 kcal/day) was 1,796 kcal/day (SD 563 kcal/day) for
188 men (dashed blue line) and 1,484 kcal/day (SD 356 kcal/day) for women (dashed
189 green line). For reference, dietary reference values recommend 1,860 and 2,290
190 kcal/day for, respectively, moderately active females and males between the ages of
191 60 and 69 years¹⁶. Thus, the reported energy intake was lower than these reference
192 values. A complete breakdown of macronutrient intake (carbohydrates, sugars,
193 saturated and unsaturated fat, protein, fiber, and salt) is provided in Supplemental
194 Fig. S4. Additionally, mean reported daily energy intake was not correlated with year
195 of birth (Spearman's $\rho = -0\cdot19$, $p = 0\cdot15$).

196 Secondly, Bland-Altman plots comparing daily (accumulated) reported insulin doses
197 with prescriptions from health records, stratified by rapid and (ultra) long-acting
198 insulin analogues (Supplemental Fig. S5 and S6), showed an overall mixed
199 agreement between reported and prescribed values. The median bias of respectively
200 rapid- and long-acting analogue doses were both 0 IU/day. The relative difference
201 between reported and prescribed daily dose was between -15% and 15% for 50·2%
202 of study days for short-acting insulins (this range was defined to allow some daily
203 variability, typical for short-acting insulin treatment). There was no difference

204 between reported and prescribed dose on 55.5% of study days for long-acting
205 insulins. Otherwise, daily insulin doses were mostly underreported compared to
206 prescribed doses (respectively 31.6% and 31.0%). Note for example the distinct
207 declining line of points for long-acting insulins that correspond to days without
208 reported doses. Nonetheless, the deviations in the reported daily doses could be
209 attributed to a subset of individuals (Supplemental Fig. S7 and S8).

210 Ecological momentary assessment of mood with the nudging mechanism using the
211 smartwatch provided a method to repeatedly gain insight into psychological status
212 within the natural flow of life. Of the five mood categories, participants primarily
213 reported being happy (13.5%) or relaxed (78.9%) throughout the day (Fig. 4), while
214 stressed (5.4%), sad (1.2%), and angry (1.0%) were reported less frequently.
215 Moreover, mood was reported most frequently shortly after participants were
216 nudged, evident by a considerably higher number of reports during the hours of the
217 day including 08:00, 12:00, 18:00, and 20:00. Differences in the number of reports at
218 these four times can be attributed to differences in wearing percentage and response
219 percentage. Firstly, the wearing percentage was lower at 52.7% (95% CI, 49.1% –
220 56.3%) in the morning compared to 94.0% (95% CI, 92.1% – 95.6%), 95.6% (95%
221 CI, 93.9% – 96.9%), and 96.1% (95% CI, 94.5% – 97.3%) at 12:00, 18:00, and
222 20:00, respectively. Secondly, the nudging response percentage was considerably
223 lower at noon with 33.0% (95% CI, 29.6% – 36.6%) compared to 18:00 and 20:00
224 with respectively 41.5% (95% CI, 37.9% – 45.1%) and 42.1% (95% CI, 38.5% –
225 45.7%), while the response percentage at 08:00 was 35.4% (95% CI, 30.7% –
226 40.3%). Thus, the nudging mechanism was most effective in the evening times.
227 These wearing and response percentages, overall and stratified by nudge time, did
228 not decrease throughout the study period and were unaffected by the check-up call

229 around study day five (Supplemental Fig. S9 and S10). Nevertheless, similar to the
230 reported dietary intake and insulin doses, the response percentages varied
231 considerably among participants, ranging from 0% to 96% during the observational
232 period (Supplemental Fig. S11). However, the percentages of responses to the
233 nudging were not correlated with the number of moods reported outside of the
234 nudging times (Spearman's $\rho = -0.08$, $p = 0.53$).

235 **Discussion**

236 By leveraging consumer-level wearable devices, supplemented with applications and
237 a nudging mechanism, we aimed to efficiently collect multimodal personal data in
238 free-living conditions on glycemic dynamics and an extensive set of associated
239 variables (dietary intake, insulin administration, physical activity, and mood).
240 Furthermore, the effectiveness and feasibility of using multiple wearable devices
241 (CGM, smartphone, and smartwatch) with corresponding applications was assessed
242 for data collection in a study population typical of type 2 diabetes (relatively old age
243 and various comorbidities).

244 Our study showcased the opportunity to harness wearable devices as a feasible
245 method of multimodal longitudinal data collection under free-living conditions in
246 individuals. These devices required minimal calibration steps, could be operated by
247 participants following a short instruction session, and no major problems were
248 identified by the research team (except for two CGM sensor failures) or reported by
249 participants. Moreover, the interaction of the participants with the applications was
250 effective, reflected by the high percentage of participants providing self-reported
251 information. Additionally, the use of a blinded CGM negated the need to scan every
252 eight hours, potentially leading to loss of data and avoided influencing the
253 participant's decision-making. The commercial availability of these consumer-level

254 devices and public access to the applications allows for time-effectiveness and easy
255 scalability to large cohorts. These devices, thereby, provide the means to obtain
256 continuous insight into lifestyle and personalized glycemc dynamics to the public
257 and optionally their healthcare providers.

258 The combination of a CGM, a smartwatch, and a smartphone application provided
259 insight into the daily life of an individual, from the comfort of their home, of which
260 limited information was otherwise available. However, data collected under free-
261 living conditions is usually not a comprehensive description of all lifestyle events.
262 Evaluation of data quality indeed indicated that participant-reported data did not
263 always compare to expectations, with heterogeneity in the magnitude of these
264 differences between participants. Firstly, the energy intake reported through the
265 smartphone application (Fig. 2) was, on average, lower than expected (around 450
266 kcal/day lower) considering the European guidelines for moderately active women
267 and men between the ages of 60 and 69 years¹⁶. Nonetheless, the mean reported
268 energy intake was comparable to another study using the same smartphone
269 application in a younger non-diabetic population (1,830 kcal/day, SD 485 kcal/day,
270 n=100), which concluded that the application provided comparable results to 24-hour
271 recalls. Dubosson et al., whom relied on picture-based food annotation by a dietitian,
272 reported similar daily energy intakes (1,672 kcal/day, SD 1,038 kcal/day, n=8)^{12,17}.
273 Additionally, mean daily carbohydrate intake was similar to participant-reported
274 values in people with type 1 diabetes¹¹. Therefore, even though the energy intake
275 may deliberately be reduced or underreported by participants during a study focused
276 on lifestyle observation, partially accounting for the discrepancy, accurate dietary
277 intake assessment in free-living conditions remains challenging. Nonetheless, all
278 participants had reported dietary intake for at least 11 days. The participant's age did

279 not appear to be a limiting factor in reporting dietary intake using a smartphone
280 application, even with a generally older cohort typical for type 2 diabetes.

281 Secondly, the smartwatch offered an easily accessible means for insulin usage
282 registration, which needed no connection to the internet or a smartphone and was
283 always at hand for participants. These reported insulin doses were accurate on a
284 majority of the study days, when they could be compared to prescribed insulin
285 treatments. These comparisons demonstrated that only five out of 36 long-acting
286 insulin users, and no short-acting insulin users, failed to report at least one day for
287 which the accumulated daily insulin dosages were comparable to their health
288 records. However, the accumulated daily insulin dosages derived from insulin reports
289 were frequently lower than prescribed (especially evident when one dose a day was
290 prescribed, and none were reported). It is unclear why insulin administration was
291 underreported. While daily dose adjustments are inherently part of the short-acting
292 insulin treatment, the quality of reported data on insulin use may be affected by the
293 otherwise repeated nature of daily insulin dosing leading to a lack of urgency to
294 consistently report these events. It has already been shown that data on insulin
295 dosing can be effectively collected from insulin pumps¹⁸, which are predominantly
296 used by people with type 1 diabetes, whereas the recent development of smart
297 insulin pens could potentially alleviate the burden of insulin dose registration
298 altogether.

299 Thirdly, ecological momentary assessment of mood using the smartwatch,
300 supplemented with a nudging mechanism four times a day, appeared to be an
301 effective method to collect information on the perceived mood of participants.

302 Participant involvement was consistent throughout the study period with high
303 wearing percentages (except in the early morning when several participants may not

304 yet have woken up) and overall steady response percentages. Participants for whom
305 the nudging mechanism was less effective still provided ample mood reports without
306 this nudging encouragement. In addition to providing a means to report mood and
307 insulin doses, the smartwatch enabled the measurement of heart rate, acceleration,
308 and step count to independently inform on physical activity (next to participant-
309 reported physical activity). Lastly, the mean daily value of none of the variables
310 reported by the participants decreased considerably throughout the study period;
311 which, if this had happened, could have suggested that the data collection protocol
312 may have placed too much of a burden on the participants. Thus, while the collected
313 data may not be a complete description of all daily events, these wearable devices
314 can effectively be used to acquire multimodal data in free-living conditions. Hereby
315 answering the call for precision monitoring methods as the next step towards
316 precision prevention, diagnostics, and prognostics ^{1,2}.

317 We acknowledge that the study cohort consisting of known patients does not provide
318 a complete cross-sectional overview of the diabetic population in the Netherlands.
319 Nonetheless, the study cohort is typical for a type 1 and 2 diabetes cohort, when
320 compared to other studies in terms of patient characteristics. Inclusion may be
321 biased for participants with at least some affinity for digital devices as those
322 unfamiliar or hesitant to use wearable devices may be more likely to refuse
323 participation. These latter people may need additional support to promote adequate
324 use of these wearable devices.

325 Multiple enhancements could further enrich the collected data through the inclusion
326 of standardized at-home meals and meal tolerance tests¹⁹. Furthermore, the
327 registration of medication usage can be extended from the use of solely exogenous
328 insulin to oral medications (e.g., metformin and GLP-1 agonists). Adherence to these

329 medications was currently assumed to be consistent throughout the study period,
330 even though in practice adherence has shown to be inconsistent²⁰. Additionally, real-
331 time communication between devices can enable personalized nudging
332 mechanisms, by incorporating information from all devices, for Just-In-Time Adaptive
333 Interventions²¹. Tailoring the timing, frequency, and format of the nudging to the
334 individual may improve effectiveness, while just-in-time nudging could be used to
335 promote reports on dietary intake or insulin injections when blood glucose excursions
336 are observed (currently the nudging mechanism was limited to data collection on
337 mood due to the inherent continuity of human mood, which is lacking in all other
338 variables).

339 The data collected in free-living conditions holds the potential for various clinical
340 purposes, as indicated by the growing interest and recent increase in research within
341 this field. Firstly, it offers a deeper understanding of intra-day and inter-day glycemic
342 variability at an individual level. This understanding enables healthcare providers to
343 deliver targeted and personalized care (precision medicine), which may contribute to
344 improved health outcomes (e.g., to deliver app-based personalized lifestyle
345 recommendations¹⁴). Secondly and more importantly, the collected data offers
346 valuable insights when analyzed across broader groups. It can reveal inter-individual
347 variations, facilitating the identification of distinct subgroups within the diabetes
348 population, unveiling their distinct characteristics and needs (e.g., to stratify meal
349 events for digital phenotyping¹⁵). Lastly, these data can support the development of
350 next-generation simulators and digital twins, general or personalized dynamic
351 metabolic models capable of predicting glucose levels and their modulation due to
352 daily activities²². Such models have the potential to serve multiple purposes, from
353 enhancing broader group-level education by showcasing the response of blood

354 glucose levels to lifestyle decisions to *in silico* experiments with virtual patient
355 cohorts. A deeper understanding of a disease like diabetes and the various factors
356 influencing blood glucose levels can foster increased self-confidence and effective
357 self-management in people with diabetes. Given that improved self-management in
358 diabetes correlates with better health and reduced short- and long-term
359 complications, the significance of this understanding is clear²³. Furthermore,
360 diabetes self-management education and support (DSMES) currently occurs
361 predominantly through one-on-one consultations with healthcare providers.
362 However, with the escalating numbers of patients with diabetes globally, there is a
363 growing need for more scalable, sustainable, and affordable support. Electronic
364 resources and digital interventions, such as advanced simulators, predicting glucose
365 levels at a personal level, could offer a crucial addition to future healthcare. They
366 hold the potential to make healthcare more efficient and accessible while
367 simultaneously improving its quality.

368 **Conclusion**

369 Our study showcased the feasibility and effectiveness of consumer-level wearable
370 devices for multimodal data collection in free-living conditions, in a predominantly
371 type 2 diabetes cohort. Moreover, the protocol can be scaled to larger cohorts and
372 easily reproduced and integrated due to the commercial or free availability of the
373 devices and applications. The multimodal data that can be measured in free-living
374 conditions, by relying on wearable devices, applications, and the people themselves,
375 give us the opportunity for precision monitoring to individualize patient care by
376 accounting for intra- and inter-day heterogeneity in glycemic dynamics. Moreover,
377 the data support further research into the effects of self-regulated behavior and
378 health on glycemic dynamics and the long-term progression of the disease.

379 Ultimately, enabling us to provide patients with personalized approaches for diabetes
380 treatment and self-management support.

381 **STAR Methods**

382 **Study Design and Participants**

383 Between June 2022 and June 2023, 60 participants (both type 1 and type 2
384 diabetes) were included and data were collected over a consecutive 14-day period.
385 All participants were recruited from the outpatient clinic of the Máxima Medical
386 Centre (The Netherlands). Participants were eligible for inclusion when they met the
387 following criteria: (I) diagnosis of type 2 diabetes or type 1 diabetes (body mass
388 index (BMI) < 30 kg/m² for type 1 diabetes), (II) age > 18 years, (III) possession of a
389 smartphone that runs the required application. Exclusion criteria comprised: (I)
390 pregnancy or breastfeeding, (II) ongoing treatment for malignancy, (III) scheduled
391 MRI scan during the study, and (IV) non-Dutch speaking. All individuals provided
392 written informed consent. The study was registered in the Dutch Trial Registry
393 (NL9290), approved by the Medical Research Ethics Committee Máxima MC (nr.
394 L20.102), and conducted according to the principles of the Declaration of Helsinki.
395 Participation consisted of two visits to the clinic and a telephone call. During the first
396 visit, a brief overview of the participant's medical history was registered, along with
397 medication use. Subsequently, blood pressure, resting heart rate, weight, and length
398 were measured and a blinded CGM was applied. Finally, participants received a
399 smartwatch with preinstalled study application, were instructed on how to download
400 the smartphone application, and use the devices.
401 Four to six days after the first visit participants were contacted by telephone to
402 address specific issues, identified through a remote assessment of data reported on

403 dietary intake and physical activity. Instructions were reiterated if necessary.
404 Subsequently, after 14 days, participants returned for the second visit in a fasted
405 state to draw blood and return all devices. The data on these devices were
406 subsequently pseudonymized and exported to a secure database.

407 **Data Collection**

408 Glucose concentrations were measured using a *FreeStyle Libre Pro iQ* sensor
409 (Abbott Diabetes Care, Illinois, USA), a blinded CGM that measured interstitial
410 glucose levels every 15 minutes, 24 hours per day, for 14 consecutive days.
411 Glycated hemoglobin (HbA1c), fasting glucose, and c-peptide concentrations were
412 measured using the standard protocol of the hospital's clinical chemical laboratory.
413 Participants received a *Samsung Galaxy Watch 2 Active 44mm* smartwatch during
414 visit 1, pre-installed with the developed application (built for the Tizen mobile
415 operating system). The application allowed participants to report mood and insulin
416 analogue usage and automatically recorded measurements from the internal sensors
417 (heart rate monitor, pedometer, triaxial accelerometer). First, (insulin-dependent)
418 participants were instructed to self-report the type of insulin injected (short-acting,
419 long-acting, or mixed insulin), dose, and time of injection through the dedicated
420 screen. Secondly, participants were nudged four times a day at fixed times (8 AM, 12
421 PM, 6 PM, 8 PM) through short vibrations and activation of the smartwatch
422 showcasing the dedicated mood screen. The screen provided the option of five
423 moods with matching emojis: happy, relaxed, stressed, angry, and sad. Participants
424 were instructed to respond to these nudges and to report their mood when they
425 perceived a change in their mood. Nonetheless, participants retained the autonomy

426 to report mood at any time via the application. An overview of the smartwatch
427 application can be seen in Supplemental Fig. S1.

428 Dietary intake, both food and beverage consumption (excluding water, tea, and
429 coffee without any additives), and physical activity were self-reported every day
430 through the *Mijn Eetmeter* smartphone application (translates to 'My Eating Meter')
431 on the participant's smartphone (Voedingscentrum, The Hague, The Netherlands)²⁴.
432 Reporting dietary intake required participants to enter the meal moment (breakfast,
433 lunch, dinner, and snacks in between these meal moments), meal contents, and
434 amounts of these meal contents. Options for meal contents are synchronized with
435 the Dutch Food Composition Information Portal (NVIP) from the Dutch National
436 Institute for Public Health and the Environment²⁵. The application provides
437 predefined portion sizes per product (e.g., one standard serving of a product or the
438 distinction between a small, medium, or large portion with an indicated weight) next
439 to the option to report the weight of the product. Instructions were given to report
440 mealtimes in an adjacent text field that listed the different meal moments.

441 Furthermore, participants were instructed to report physical activity in the application.
442 This action consisted of selecting the type of activity from a wide range of
443 possibilities (from walking to cleaning the house), the duration of the activity, and
444 noting the starting time in a text field. For an impression of the application, see
445 Supplemental Fig. S2.

446 **Data Security**

447 Participants were provided with preset study *Mijn Eetmeter* accounts to promote data
448 security and privacy, aligning with the General Data Protection Regulation (GDPR).
449 Additionally, the smartwatch and CGM operated offline during the study period.

450 **Statistical Analysis**

451 95% binomial proportion confidence intervals for wearing percentage (smartwatch
452 was worn at the time of a nudge) and response percentage (responses to nudges
453 when the smartwatch was determined to be worn) were calculated using Clopper-
454 Pearson “exact” confidence intervals, unless stated otherwise. The wearing of the
455 smartwatch was determined by the presence of a valid reading of the heart rate
456 sensor within one minute of nudging, whereas the response percentage was defined
457 as the percentage of responses to a nudge, within five minutes, when the
458 smartwatch was worn according to the previous criterion.

459

460 **Acknowledgements**

461 This research is part of the DiaGame project funded by NWO Data2Person
462 (628.011.027).

463 **Declaration of Interests**

464 H.H. was a shareholder and on the board of directors of HRH Diabetes Games B.V.
465 at the time this work was conducted. All other authors declare no conflict of interest.

466 **Author Contributions**

467 R.V. was responsible for conceptualization, methodology, software, validation, formal
468 analysis, investigation, resources, data curation, visualization, and writing the first
469 draft of the manuscript. E.R. was responsible for conceptualization, methodology,
470 validation, investigation, resources, and writing the first draft of the manuscript. D.C.
471 worked on conceptualization, methodology, software, validation, investigation,
472 resources, and data curation. E.C. was responsible for conceptualization,

473 methodology, validation, investigation, and resources. P.G., P.W., U.K, P.H, N.R.,
474 and H.H. contributed to conceptualization, methodology, and reviewing of the
475 manuscript. Additionally, N.R. and H.H. provided supervision and acquired funding,
476 while N.R. was also responsible for project administration. All authors approved the
477 definitive version of the manuscript.

478 **Data Availability Statement**

479 The data used and/or analyzed in the current study are available from the
480 corresponding author upon reasonable request.

481

482 **References**

- 483 1. Chung, W. K. *et al.* Precision Medicine in Diabetes: A Consensus Report from
484 the American Diabetes Association (ADA) and the European Association for
485 the Study of Diabetes (EASD). *Diabetes Care* **43**, 1617–1635 (2020).
- 486 2. Hermanns, N. *et al.* Coordination of glucose monitoring, self-care behaviour
487 and mental health: achieving precision monitoring in diabetes. *Diabetologia*
488 vol. 65 1883–1894 Preprint at <https://doi.org/10.1007/s00125-022-05685-7>
489 (2022).
- 490 3. American Diabetes Association. Pharmacologic approaches to glycemic
491 treatment: Standards of medical care in diabetes-2021. *Diabetes Care* **44**,
492 S111–S124 (2021).
- 493 4. Colberg, S. R. *et al.* Physical activity/exercise and diabetes: A position
494 statement of the American Diabetes Association. *Diabetes Care* vol. 39 2065–
495 2079 Preprint at <https://doi.org/10.2337/dc16-1728> (2016).

- 496 5. Evert, A. B. *et al.* Nutrition therapy for adults with diabetes or prediabetes: A
497 consensus report. *Diabetes Care* vol. 42 731–754 Preprint at
498 <https://doi.org/10.2337/dci19-0014> (2019).
- 499 6. O’Hearn, M. *et al.* Incident type 2 diabetes attributable to suboptimal diet in
500 184 countries. *Nat Med* **29**, 982–995 (2023).
- 501 7. Young-Hyman, D. *et al.* Psychosocial care for people with diabetes: A position
502 statement of the American diabetes association. *Diabetes Care* vol. 39 2126–
503 2140 Preprint at <https://doi.org/10.2337/dc16-2053> (2016).
- 504 8. Miller, E. M. Using continuous glucose monitoring in clinical practice. *Clinical*
505 *Diabetes* vol. 38 429–438 Preprint at <https://doi.org/10.2337/cd20-0043> (2020).
- 506 9. Pendergast, F. J., Ridgers, N. D., Worsley, A. & McNaughton, S. A. Evaluation
507 of a smartphone food diary application using objectively measured energy
508 expenditure. *International Journal of Behavioral Nutrition and Physical Activity*
509 **14**, 1–10 (2017).
- 510 10. Rodriguez-León, C., Villalonga, C., Muñoz-Torres, M., Ruiz, J. R. & Banos, O.
511 Mobile and wearable technology for the monitoring of diabetes-related
512 parameters: Systematic review. *JMIR mHealth and uHealth* vol. 9 Preprint at
513 <https://doi.org/10.2196/25138> (2021).
- 514 11. Marling, C. & Bunescu, R. The OhioT1DM Dataset for Blood Glucose Level
515 Prediction: Update 2020. in *CEUR Workshop Proceedings* 71–74 (2020).
- 516 12. Dubosson, F. *et al.* The open D1NAMO dataset: A multi-modal dataset for
517 research on non-invasive type 1 diabetes management. *Inform Med Unlocked*
518 **13**, 92–100 (2018).

- 519 13. Zhao, Q. *et al.* Chinese diabetes datasets for data-driven machine learning.
520 *Sci Data* **10**, (2023).
- 521 14. Zahedani, A. D. *et al.* Digital health application integrating wearable data and
522 behavioral patterns improves metabolic health. *NPJ Digit Med* **6**, (2023).
- 523 15. Pai, A. *et al.* Multimodal digital phenotyping of diet, physical activity, and
524 glycemia in Hispanic/Latino adults with or at risk of type 2 diabetes. *NPJ Digit*
525 *Med* **7**, (2024).
- 526 16. EFSA (European Food Safety Authority). Dietary Reference Values for
527 nutrients. Summary report. *EFSA Supporting Publications* **14**, (2017).
- 528 17. Ocké, M., Dinnissen, C., Stafleu, A., de Vries, J. & van Rossum, C. Relative
529 validity of MijnEetmeter: A food diary app for self-monitoring of dietary intake.
530 *Nutrients* **13**, (2021).
- 531 18. Prioleau, T., Bartolome, A., Comi, R. & Stanger, C. DiaTrend: A dataset from
532 advanced diabetes technology to enable development of novel analytic
533 solutions. *Sci Data* **10**, (2023).
- 534 19. Héritier, H. *et al.* Food & You: A digital cohort on personalized nutrition. *PLOS*
535 *Digital Health* **2**, (2023).
- 536 20. Kirkman, M. S. *et al.* Determinants of adherence to diabetes medications:
537 Findings from a large pharmacy claims database. *Diabetes Care* **38**, 604–609
538 (2015).
- 539 21. Spruijt-Metz, D. *et al.* Innovations in the Use of Interactive Technology to
540 Support Weight Management. *Current Obesity Reports* vol. 4 510–519
541 Preprint at <https://doi.org/10.1007/s13679-015-0183-6> (2015).

- 542 22. Katsoulakis, E. *et al.* Digital twins for health: a scoping review. *npj Digital*
543 *Medicine* vol. 7 Preprint at <https://doi.org/10.1038/s41746-024-01073-0> (2024).
- 544 23. Davis, J. *et al.* 2022 National Standards for Diabetes Self-Management
545 Education and Support. *Diabetes Care* **45**, 484–494 (2022).
- 546 24. Voedingscentrum. Mijn Eetmeter. <https://mijn.voedingscentrum.nl/nl/eetmeter/>
547 (2023).
- 548 25. Dutch National Institute for Public Health and the Environment. Nederlandse
549 Voedingsmiddelen Informatie Portaal. [https://www.rivm.nl/nederlands-](https://www.rivm.nl/nederlands-voedingsstoffenbestand/organisatie/nederlands-voedingsmiddeleninformatieportaal)
550 [voedingsstoffenbestand/organisatie/nederlands-](https://www.rivm.nl/nederlands-voedingsstoffenbestand/organisatie/nederlands-voedingsmiddeleninformatieportaal)
551 [voedingsmiddeleninformatieportaal](https://www.rivm.nl/nederlands-voedingsstoffenbestand/organisatie/nederlands-voedingsmiddeleninformatieportaal) (2024).
- 552
- 553

Demographics	Mean ± Standard Deviation	
	Type 2 Diabetes (n = 51)	Type 1 Diabetes (n = 8)
General		
Male	32	3
Female	19	5
BMI (kg/m ²)	30.1 ± 4.9	25.4 ± 3.3
Age (years)	69.1 ± 7.1	54.6 ± 16.9
HbA1c (mmol/mol)	61.5 ± 11.7	63.4 ± 15.0
HbA1c (%)	7.8 ± 1.1	8.0 ± 1.4
Systolic Blood Pressure (mmHg)	133 ± 16	128 ± 13
Diastolic Blood Pressure (mmHg)	73 ± 8	76 ± 4
Resting Heart rate (bpm)	75 ± 17	81 ± 12
Diabetes Duration (years)	20.5 ± 7.3	26.6 ± 13.4
Fasting Glucose (mmol/L)	7.8 ± 2.5*	10.7 ± 4.0
Fasting C-Peptide (nmol/L)	0.69 ± 0.44* (1 BLOQ)	0.10 ± 0.14 (5 BLOQ)
Time in Range During the Study (%)	66.8 ± 22.7	62.7 ± 21.6
Daily Insulin per kg bodyweight (IU/kg/day)	0.45 ± 0.45	0.44 ± 0.20
Insulin Analogues and Medication		
Insulin Aspart	17	7
Insulin Lispro	2	1
NPH Insulin	2	1
Insulin Glargine	9	0
Insulin Detemir	2	0
Insulin Degludec	25	5
Mixed Insulins	1	0
Insulin Pump Therapy	1	2
Metformin	41	1
SGLT2 Inhibitors	17	0
GLP-1 Agonist	23	0
Sulfonylureum Derivatives	25	0

554
555

Table 1: Participant characteristics stratified by diabetes type. *n=58 as one participant had not fasted the morning of visit 2. BLOQ: Below Limit of Quantification (0.03 nmol/L for C-peptide); these

556 *values were imputed with half of the detection limit concentration to calculate the corresponding*
557 *presented statistic. Time in range is defined by the percentage of times CGM values were in between*
558 *3.9 and 10.0 mmol/L.*

559

560

561

562

563

564

565

566

567

568

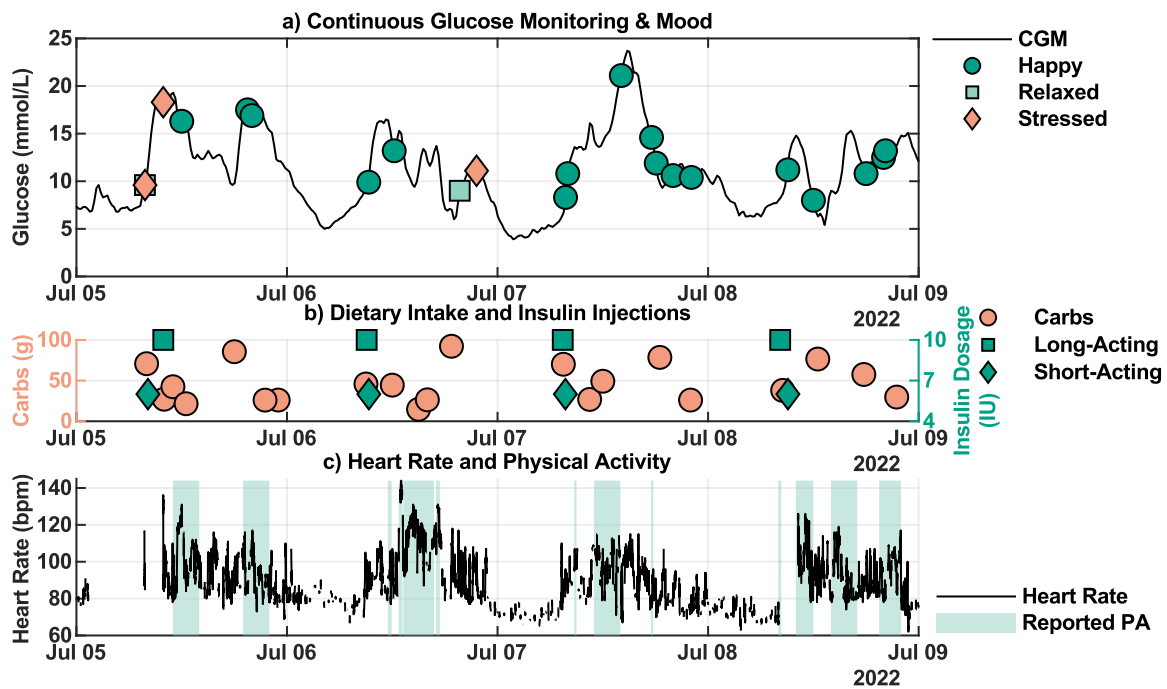
569

570

571

572

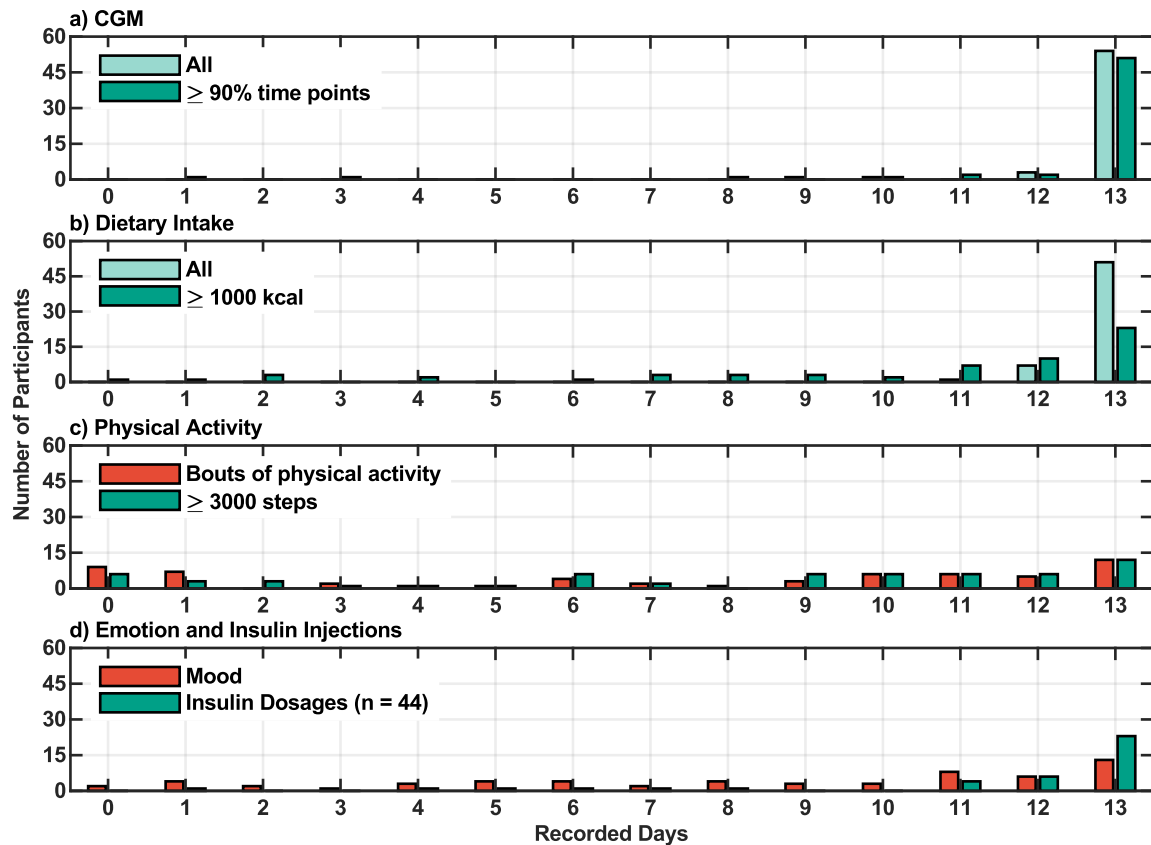
Figures



573

574 **Figure 1: Example of four days of data collected from one participant.**

575 *Panel A: CGM measurements (in mmol/L, solid black line) and reported moods (dark green circle =*
576 *happy, light green square = relaxed, light red diamond = stressed; sad and angry were not reported*
577 *by this participant in this interval). Panel B: Carbohydrate content (in grams) of reported dietary intake*
578 *(light red circles) and reported short-acting (dark green diamonds) and long-acting (dark green circles)*
579 *insulin doses (IU). Panel C: Measured heart rate in beats per minute (solid black line) and participant-*
580 *reported bouts of physical activity (light green shade). Accelerometer and pedometer data were*
581 *excluded from this figure for clarity.*



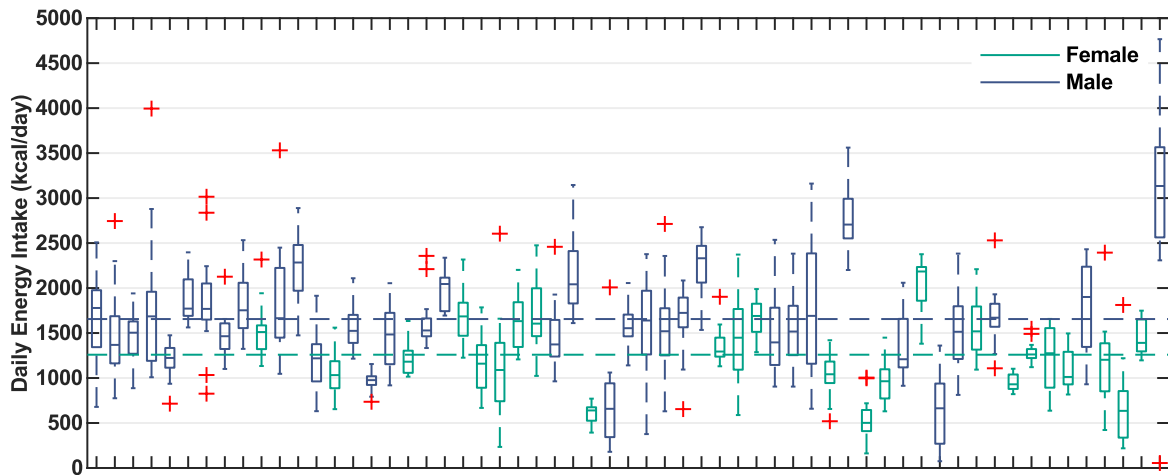
582

583 **Figure 2: Distribution of available days of collected data per participant for various data**
 584 **modalities.**

585 *Distribution of the total number of days, excluding days of study visits, with collected data per*
 586 *participant for each of the data modalities. Panel A: Distributions of available CGM measurements*
 587 *(including all days = light green, including days with at least 90% of CGM time points = dark green).*
 588 *Panel B: Distributions of self-reported dietary intake (including all days = light green, including days*
 589 *with at least 1,000 kcal reported = dark green). Panel C: Distributions of self-reported physical activity*
 590 *(red) and days with at least 3,000 steps (green). Panel D: Distributions of self-reported mood (red)*
 591 *and insulin injection doses (green, n = 44 since not all study participants were insulin dependent).*

592

593



594

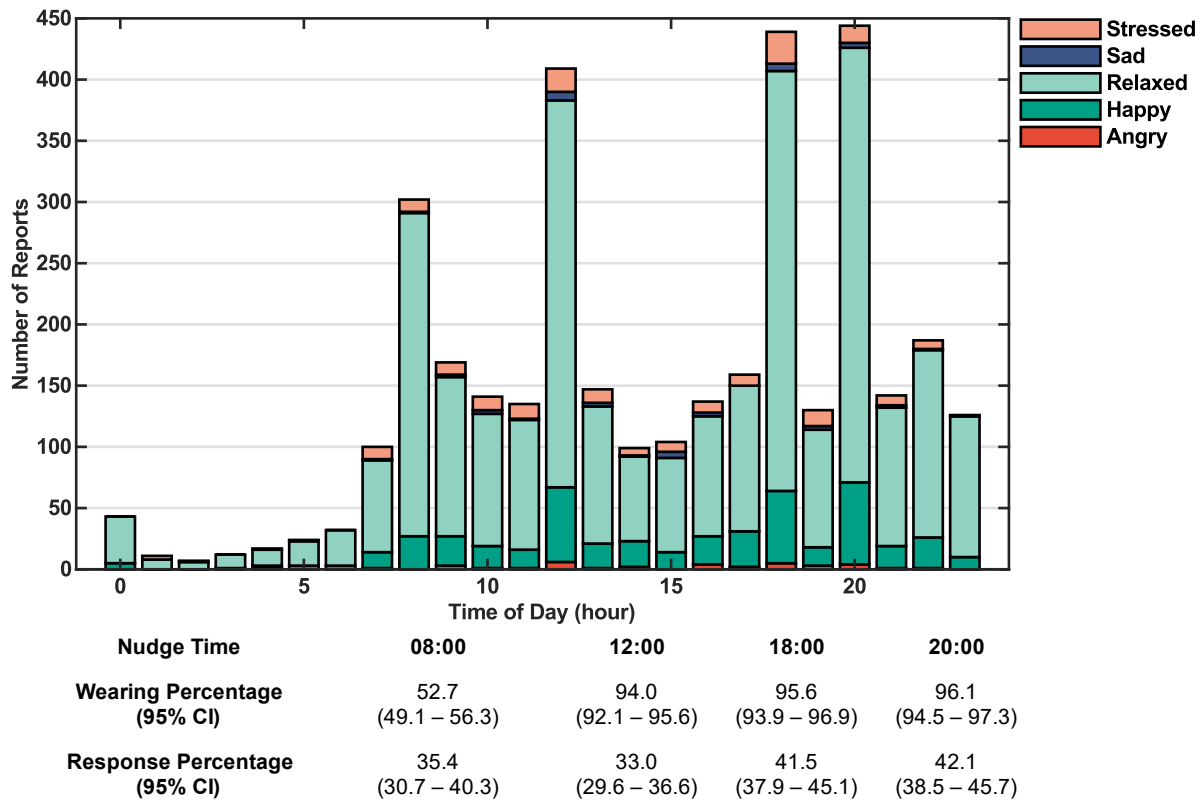
595 **Figure 3: Reported daily energy intake colored by sex and sorted by year of birth (ascending**
596 **from left to right).**

597 *Boxplots of the daily energy intake (kcal/day) reported from day two (day one excluded due to the*
598 *variability of the times of day at inclusion) until visit 2 for each participant. Participants are colored by*
599 *sex (blue = male, green = female, outliers are colored red) and sorted by year of birth (ascending from*
600 *left to right). Mean daily energy intake per sex (including outliers) is depicted by corresponding*
601 *dashed lines (1,655 kcal/day for males and 1,259 kcal/day for females).*

602

603

604



605

606 **Figure 4: Moods reported by participants at each time of day and nudging statistics at each**
 607 **nudging instance.**

608 *Number of moods reported at each hour of the day (angry = dark red, happy = dark green, relaxed =*
 609 *light green, sad = dark blue, stressed = light red). Underneath the figure, the wearing percentage at*
 610 *each nudge time (08:00, 12:00, 18:00, and 20:00) and corresponding response percentage to the*
 611 *nudges are given with 95% confidence intervals.*

612

613

614

615

616

617

618

619