

1 Predictors of Response to Cardiac Resynchronization Therapy in 2 Pediatric and Congenital Heart Disease Patients

3

4 Authors

5 Henry Chubb MA MBBS PhD^{1,2}, Douglas Mah MD³, Maully Shah MD⁴, Kimberly Y Lin MD⁴, David
6 Peng MD⁵, Benjamin W Hale MD^{5,6}, Lindsay May MD⁷, Susan Etheridge MD⁷, William Goodyer¹,
7 Scott R Ceresnak MD¹, Kara S Motonaga MD¹, David N Rosenthal MD¹, Christopher S Almond
8 MD MPH¹, Doff B McElhinney MD^{1,2}, Anne M Dubin MD¹

9

10 Author Affiliations

11 ¹Division of Pediatric Cardiology, Department of Pediatrics, Stanford University, CA, USA

12 ²Division of Pediatric Cardiothoracic Surgery, Department of Cardiothoracic Surgery, Stanford
13 University, CA, USA

14 ³ Department of Cardiology, Boston Children’s Hospital; Department of Pediatrics, Harvard
15 Medical School; Boston MA, USA

16 ⁴ Department of Cardiology, Children’s Hospital of Philadelphia, Philadelphia, PA, USA

17 ⁵ Department of Cardiology, CS Mott Children’s Hospital, University of Michigan , Ann Arbor,
18 MI, USA

19 ⁶ Department of Pediatrics, Stead Family Children’s Hospital, Iowa City, IA

20 ⁷ Department of Cardiology, Primary Children’s Hospital, University of Utah, Salt Lake City, UT,
21 USA

22

23 Corresponding Author

24 Henry Chubb, Clinical Associate Professor, Division of Pediatric Cardiology, Stanford University
25 School of Medicine, 750 Welch Road, Stanford, CA 94304
26 mhchubb@stanford.edu

27

28 Total Word Count

29 4873 (including manuscript body, references and figure legends)

30

31 [Disclosure Statements](#)

32 The authors would like to declare the following relationships with industry

33

34 Henry Chubb – None

35 Douglas Mah – None

36 Maully Shah- Medtronic Inc- consultant

37 Kimberly Lin- None

38 David Peng- None

39 Benjamin Hale- None

40 Lindsay May- None

41 Susan Etheridge- None

42 William Goodyer- None

43 Scott Ceresnak- None

44 Kara Motonaga- None

45 David Rosenthal- None

46 Christopher Almond- None

47 Doff McElhinney- Medtronic Inc- Proctor and Consultant

48 Anne Dubin- None

49

50 [Funding](#)

51 None

52

53 [Keywords](#)

54 Cardiac resynchronization therapy; Congenital heart disease; Cardiac Failure; Pediatric;

55 Predictors of Response; Dyssynchrony

56 Abstract

57 **Background:**

58 Cardiac resynchronization therapy (CRT) is an important therapeutic option in selected pediatric
59 and congenital heart disease (CHD) patients with reduced systemic ventricular (SV) ejection
60 fraction (EF). However, the identification of optimal responders is challenging.

61

62 **Objective:**

63 To identify predictors of response to CRT in children and CHD patients at 5 large quaternary
64 referral centers.

65

66 **Methods:**

67 Patients were <21 years or had CHD; had SVEF <45%; symptomatic heart failure; and significant
68 electrical dyssynchrony prior to CRT. Primary outcome was defined as an ordinal response at
69 6/12months: (1) Improved EF [$\geq 5\%$], (2) Unchanged SVEF, (3) Worse SVEF. Secondary outcome
70 utilized a propensity score-matched control cohort. Response to CRT was defined using
71 longitudinal trajectory of SVEF up to latest follow-up.

72

73 **Results:**

74 In total, 167 eligible CRT recipients were identified across the 5 centers. 150 had
75 comprehensive data at 6/12months: 96(64%) with improved SVEF, 26(17%) unchanged,
76 28(19%) worsened. Mean increase in SVEF was 11% [IQR 3-21%]. On univariable ordinal
77 regression, lower SVEF ($p=0.013$), biventricular circulation ($p=0.022$), systemic LV ($p=0.021$), and
78 conduction delay to lateral wall of SV ($p=0.01$) were associated with positive response.

79

80 For assessment of secondary outcome, 324 controls were identified. Mean follow-up 4.2(± 3.7)
81 yrs. Almost all subgroups demonstrated improved SVEF trend with CRT, except those with
82 systemic RV ($p=0.69$) or without prior single site pacemaker ($p=0.20$).

83

84 **Conclusion:**

85 CRT in children and CHD patients frequently results in an improvement in SVEF. Those with
86 lower SVEF, conduction delay to lateral wall of the SV and those with systemic LV are most
87 likely to respond.

88

89

90 Condensed Abstract

91 Cardiac resynchronization therapy (CRT) is an important therapeutic option in selected pediatric
92 and congenital heart disease (CHD) patients with reduced systemic ventricular (SV) ejection
93 fraction (EF). However, the identification of optimal responders is challenging.

94

95 In this multicenter study, pediatric and CHD CRT recipients with heart failure and EF<45% were
96 identified. The primary outcome was change in EF at 6/12months. Those with lower baseline
97 SVEF, conduction delay to lateral wall of the SV and/or systemic LV were most likely to respond
98 to CRT. When compared to propensity score-matched controls, the CRT groups also
99 demonstrated a significantly better long-term EF trajectory.

100

101

102 Key Words

103 Cardiac Resynchronization Therapy

104 Pediatric

105 Heart Failure

106 Congenital Heart Disease

107 Cardiac Transplant

108 Electrical Dyssynchrony

109

110 Abbreviations List

111 CHD: Congenital Heart Disease

112 CRT: Cardiac Resynchronization Therapy

113 DCM: Dilated Cardiomyopathy

114 EF: Ejection Fraction

115 HF: Heart Failure

116 HR: Hazard Ratio

117 ICD: Implantable Cardioverter Defibrillator

118 LV: Left Ventricle

119 NYHA: New York Heart Association

120 PSM: Propensity Score-Match

121 QRSd: QRS Duration

122 RV: Right Ventricle

123 SV: Systemic Ventricle

124

125 Introduction

126 Cardiac resynchronization therapy (CRT) is a treatment modality widely employed for patients
127 with significant systemic ventricular (SV) dysfunction and evidence of electrical dyssynchrony.
128 However, evidence for the use of this important treatment is relatively limited in children and
129 congenital heart disease (CHD) patients as all prospective randomized trials of CRT have
130 specifically excluded these subjects.¹⁻⁶ None the less, retrospective studies and meta-analysis
131 have clearly demonstrated that many children and CHD patients may benefit from CRT in terms
132 of improvement in systemic ventricular function.⁷⁻¹¹ Furthermore, we have recently
133 demonstrated in a multicenter study that there is a strong association of CRT with survival in a
134 broad group of patients with systemic ventricular ejection fraction (SVEF)<45%, significant
135 electrical dyssynchrony and cardiac failure symptoms.¹² However, the factors that identify
136 those children and CHD subjects that are most likely to respond to CRT have not been defined.

137
138 The need to identify the pediatric and CHD groups that are most likely to respond to CRT is
139 particularly pertinent in the context of the increased technical challenges of CRT implant
140 procedures compared to adults with structurally normal hearts. The implants may be highly
141 complex and frequently require repeat sternotomy. In adults without CHD, the presence of left
142 bundle branch block (LBBB), female sex, and longer QRS duration (QRSd) have been identified
143 to be the most robust predictors of response.¹³ In the pediatric/CHD patients, though,
144 QRSd>150msec and LBBB are rarely seen.¹⁴

145
146 In a population as heterogenous as that of children and CHD subjects with systemic ventricular
147 systolic failure, there are many fundamental pathophysiological differences between patients
148 that are likely to play a role in response to CRT. However, the largest retrospective studies of
149 these patients have not concurred as to whether there are distinct subgroups that are more or
150 less likely to respond. Key subgroups for assessment include those with and without prior
151 ventricular pacing, those with and without CHD and then, within CHD, those with and without a
152 biventricular circulation and systemic LV.^{11, 15}

153

154 We hypothesized that the assessment within a larger multicenter CRT cohort would be
155 sufficiently powered to identify key predictors of response to CRT within these patient groups.
156 Given the challenge in defining response in these heterogenous morphologies, we chose to use
157 two main outcomes. The first was medium term (6-12month) change in SVEF, referenced to the
158 patient baseline prior to CRT. The second utilized a matched control group (without CRT) to
159 compare the longitudinal impact of CRT.

160

161 [Methods](#)

162 [Data collection](#)

163 This was a multicenter retrospective study. Patient data were de-identified and electronically
164 transferred to the coordinating center through a secure web- based server (REDCap [Research
165 Electronic Data Capture], Vanderbilt University, Nashville, TN). The study was approved by
166 institutional review board (IRB) at the co-ordinating center (Stanford University, IRB-45389),
167 with local IRB and data use agreement approval obtained at each center. The survival outcomes
168 of this cohort have recently been reported.¹²

169

170 [Study population](#)

171 All pediatric (<21years) and/or CHD patients who underwent CRT at five large quaternary
172 referral institutions (Lucile Packard Children’s Hospital and Stanford Healthcare, Boston
173 Children’s Hospital, Children’s Hospital of Philadelphia, Primary Children’s Hospital (University
174 of Utah), and CS Mott Children’s Hospital (University of Michigan)) between Jan 1, 2004 and Jan
175 1, 2018 were identified. CRT was defined as a multi-site ventricular pacing system implanted
176 with at least one pacing lead to the systemic ventricle (SV). CHD was defined as any congenital
177 heart defect other than isolated bicuspid aortic valve, patent foramen ovale or patent ductus
178 arteriosus. Subjects were included if, at the time of CRT implant, they had systemic SVEF <45%;
179 symptomatic heart failure [defined as American Heart Association Stage C or D]; and significant
180 electrical dyssynchrony [defined as either a QRSd z-score ≥ 3 or, in paced patients, a ventricular
181 pacing burden (Vp) $\geq 40\%$] (Figure 1). Subjects were excluded if they had Eisenmenger
182 syndrome, a current ventricular assist device, previous heart transplant or weight <4kg.

183

184 Control subjects were defined as pediatric and/or CHD patients who never received CRT and
185 who met the same inclusion and exclusion criteria at an outpatient clinical encounter within the
186 same time period. Controls were also excluded if there was a documented, planned,
187 intervention for heart failure, such as alleviation of systemic outflow tract obstruction or
188 ablation procedure for high ventricular ectopy burden. However, controls became eligible for
189 enrollment once the intervention had been performed, and, similarly, once weight was >4kg,
190 provided all inclusion criteria continued to be met.

191

192 Identification of Subjects, Enrollment and Follow-Up

193 CRT subjects were identified via the institutional pacing databases. For control subjects, a
194 comprehensive screening cohort with low SVEF and electrical dyssynchrony was identified by
195 cross-referencing the institutional echocardiographic, ECG and pacing databases. All patients
196 with both an estimated SVEF <45% and QRSd z-score ≥ 3 were selected for individual review for
197 fulfillment of inclusion and exclusion criteria. Ventricular pacing-related dyssynchrony was
198 identified via cross-referencing the echocardiographic database with the temporally matched
199 device interrogation report to identify Vp >40% and SVEF <45%. Enrollment for CRT subjects
200 was on the day of CRT implantation. Enrollment for control subjects was at the first outpatient
201 appointment where all inclusion criteria were met.

202

203 Longitudinal assessments of all patients were collected at follow-up closest to 6 months, 1 year,
204 and 5 years post enrollment, and latest follow-up. Precise date of assessment, number of heart
205 failure medications, NYHA class, SVEF, QRSd, height and weight were obtained at each
206 timepoint.

207

208 *Electrical Assessment*

209 QRSd was measured in leads II and V₅ and averaged. Strict left bundle branch block (LBBB) was
210 defined using adaptation of the criteria outlined by Strauss et al, and was assessed on the surface
211 ECG without reference to underlying cardiac anatomy.¹⁶ Right bundle branch block (RBBB) was

212 defined according to the Minnesota Code criteria (7-2-1). QRSd z-score equivalent to ≥ 120 ms
213 (z-score $\geq +2.3$) was used along with the published RBBB criteria.¹⁷

214

215 Conduction delay to the lateral wall of the SV (CDtoLWSV) was defined as those patients with
216 strict criteria LBBB and SV (which could be morphological left or right ventricle) in the
217 conventional left ventricular (LV) position, *or* a RBBB and SV in conventional right ventricular
218 (RV) position. Those with complex ventricular arrangement (such as dextrocardia) therefore
219 could not be defined as CDtoLWSV, regardless of the ECG morphology.

220

221 *Radiographic Assessment*

222 Separation of the ventricular pacing leads was assessed on the first biplane chest x-ray
223 following CRT implant (Figure 1). Unipolar pacing was rarely employed, and for those with
224 multiple poles (eg epicardial bipolar leads), the mid-point of all poles was taken for each
225 ventricular lead. Total distance in 3-dimensions, assuming orthogonal alignment of the two
226 imaging planes, was indexed to the thoracic cavity width, creating a Lead Separation Ratio
227 (LSR).

228

229 *Echocardiographic Assessment*

230 Baseline echocardiographic measurements were made on the final comprehensive
231 echocardiogram prior to CRT implant. SVEF for the systemic RV was calculated from the
232 fractional area change (RVFAC), using the estimation $RVEF = 10.7 + (0.87 * RVFAC)$.¹⁸

233

234 *First Definition of Response: Medium-Term Change in SVEF from Baseline*

235 There is no clear consensus on the optimal marker of response to CRT, particularly in the CHD
236 population where many patients have differing systemic ventricular morphology. Most non-
237 CHD studies of CRT response have used a $\geq 15\%$ reduction in LVESV as a threshold, but such a
238 measure is not universally applicable in patients with mixed ventricular anatomy.^{13, 19} Studies
239 of CRT including CHD subjects have historically used a variety of measures of change in SV

240 ejection fraction EF.^{7-9, 11} A primary outcome of an echocardiographic functional response was
241 therefore defined as follows:

- 242 1. Worsened: fall in SVEF at follow-up following CRT implant
- 243 2. No change: absolute increase in SVEF of between 0% and 5%
- 244 3. Improvement: absolute increase in SVEF of $\geq 5\%$

245

246 Other studies have used a proportional increase in SVEF as a marker of response, with the
247 rationale that larger (but sometimes less clinically significant) changes may occur in patients
248 with higher baseline EF, potentially biasing results. Therefore, a proportional response was also
249 defined in order to further enable comparison between studies:

- 250 1. Worsened: fall in SVEF at follow-up following CRT implant
- 251 2. No change: proportional increase in SVEF of between 0% and 10%
- 252 3. Improvement: proportional increase in SVEF of $\geq 10\%$

253

254 Echocardiographic parameters were assessed at closest follow-up to 6 months post implant and
255 12 months post implant for all patients. Follow-up at both time points was available in many,
256 but not all, patients. Following sensitivity analyses for those with assessments recorded at both
257 6 and 12 months (see results), the average of the two measurements was used in order to
258 mitigate for variations in time to assessment.

259

260 *Second Definition of Response: Longitudinal Trends with and without CRT*

261 The identification of propensity score matched controls has been described in detail in a prior
262 publication from our group,¹² and the tables detailing the baseline parameters of the
263 unmatched and matched cohorts meeting inclusion criteria for each analysis are included in the
264 Data Supplement. Response to CRT was defined as a significant positive impact of CRT upon
265 longitudinal modelling of the long-term parameters (see statistical details below).

266

267 Statistics

268 Mean \pm standard deviation was used to summarize normally distributed continuous variables,
269 and median (with 25th-75th percentiles) was used for non-normal distribution or non-continuous
270 ordinal data. Categorical variables are presented as number (%). A priori, six anatomical and
271 pathophysiological subgroups were established by firstly dividing the cohort into those with and
272 without prior significant ventricular pacing (defined as Vp>40% prior to CRT), and then further
273 subdividing into three anatomical subgroups: those without CHD, those with CHD with two
274 ventricles and systemic LV, and those with other ('complex') CHD. Between-group variation was
275 quantified using one-way ANOVA for normally distributed variables and Kruskal-Wallis for non-
276 normal/categorical variables.

277

278 Ordinal logistic regression was used to assess the association of indices with ordinal outcomes
279 (worse/no change/improved absolute or proportional change in SVEF). Multivariable modelling
280 used a stepwise approach taking forward parameters with p<0.05 on univariable analysis.

281 Multivariable modelling was performed without inclusion of the subgroup 1-6 variable on
282 account of collinearity, except on direct assessment of the significant subgroups. Longitudinal
283 measures were evaluated using multilevel mixed-effects linear regression modeling with cubic
284 model for estimation of pacing effect and visualized using fractional polynomial plot with 95%
285 CIs. Statistics were analyzed using Stata (version 18.0, Stata Corp LP, College Station, Texas).

286

287 Results

288 Subjects

289 Baseline characteristics are delineated in Table 1. A total of 167 eligible CRT subjects were
290 identified, of whom 105 (63%) were V-paced >40% at final follow-up prior to commencement of
291 CRT. 122 (73%) had congenital heart disease, the majority of whom (85 (70%)) had a
292 biventricular circulation with systemic LV. A structural surgical procedure was performed within
293 30 days before or after the implant of the CRT system in 34 (20%) subjects, 29 (85%) of which
294 were at the same procedure.

295

296 Between the 6 pre-defined subgroups, several trends in baseline indices were noted. Those
297 with prior pacing (Groups 1, 2 and 3) had a very high median pacing percentage (100% [100-
298 100%]). Compared to the non-paced cohorts (Groups 4,5 and 6) they were similar in age at
299 enrollment (9.8 [3.8-20] years versus 14.9 [9.2-20] years, $p=0.13$) and had similar SVEF
300 ($30.8\pm 8.9\%$ versus $31.8\pm 8.5\%$, $p=0.49$), but tended to have wider QRSd at baseline (165 ± 26 ms
301 versus 149 ± 28 ms, $p=0.0003$).

302

303 CRT delivery was good throughout follow-up with median pacing percentage 100% [100-100%]
304 at all follow-up time points. Follow-up was recorded close to the target dates of 6 months post
305 implant (actual timing 5.8 months [4.1-6.7 months] post implant), 12 months (12.4 months [11.1-
306 13.9 months]), 5 years (5.0 [4.7-5.4 years]) and latest follow-up (5.1 years [2.0-8.6 years]).

307

308

309 Response Definition 1: Improvement in SVEF within the First Year Post-CRT

310

311 *Response to CRT*

312 Formal assessment of SVEF was available for 150 (90%) subjects for at least one of the
313 stipulated 6 month or 12 month time points. 90 (60%) had follow-up available at both time
314 points, with excellent intraclass correlations between the SVEF measurements made at the two

315 time points (average ICCs, two-way mixed effects, absolute agreement: SVEF 0.91 (95% CI 0.86-
316 0.94)). Average values were taken for those with two follow-up measurements.

317

318 Across all subjects with formal SVEF measurements, 96 (64%) exhibited an improvement in
319 absolute SVEF >5% and 110 (73%) a proportional improvement in SVEF >10% (Table 2 and
320 Figure 2). Overall, there was an median increase in SVEF of 11% [3-21%] ($p < 0.001$ compared to
321 baseline), and a decrease in QRS duration (18 ± 24 msec, $p < 0.001$), QRSd z-score (1.9 ± 2.4 ,
322 $p < 0.001$) and NYHA class (0.6 ± 1 lower, $p < 0.001$), but no change in number of HF medications
323 (0.04 ± 0.92 , $p = 0.63$). Between subgroups, there was minimal variation in degree of change of
324 clinical parameters, except for QRSd and QRSd z-score, which shortened more in the prior
325 paced groups (delta of 22 ± 21 ms versus 8 ± 25 ms, $p < 0.001$ and delta of 2.5 ± 2.1 versus 1.0 ± 2.5 ,
326 $p < 0.001$, respectively).

327

328 There was minimal correlation between change in EF and change in QRSd ($p = 0.10$, $R^2 = 0.01$) or
329 QRSd z-score ($p = 0.044$, $R^2 = 0.03$), suggesting that the crude shortening of QRSd was not highly
330 significant in determining EF improvement following CRT. Improvement in EF was more strongly
331 correlated with improvement in NYHA class ($p < 0.001$, $R^2 = 0.12$).

332

333

334 *Morphological and pathophysiological predictors of response*

335 Factors associated with the response to CRT by ordinal logistic regression are shown in Table 3.
336 The pathophysiological groups 1-5 were not significantly associated with response, and only
337 Group 6 (no prior pacing, complex CHD) differed significantly from the other groups. This group
338 was least likely to demonstrate a response to CRT in terms of either an absolute (coefficient -
339 2.2 [-3.6 - -0.8), $p = 0.002$) or proportional response (coefficient -1.4 [-2.9 - -0.03), $p = 0.046$).

340

341 Other predictors of response differed between the absolute and proportional SVEF
342 improvement assessments. On analysis of predictors of absolute SVEF improvement (>5% rise
343 in SVEF), patients with lower baseline SVEF were more likely to experience a beneficial

344 response, on both univariable and multivariable analysis. Those with biventricular circulation,
345 systemic LV, CDtoLWSV and lower lead separation ratio were more likely to respond on
346 univariable but not multivariable analysis.

347

348 On assessment of predictors of proportional improvement in SVEF, a lower SVEF was again a
349 significant predictor on univariable and multivariable response, as was CDtoLWSV.

350

351 The association of SVEF and response (absolute and proportional) is demonstrated in Figure 3.

352 The coefficient for response was significantly worse for those with higher SVEF. All higher SVEF
353 groups were associated with significantly lower response coefficient ($p < 0.05$) on absolute
354 response, with the exception of the 3rd tertile (36/45%) and 4th quintile (36/40%). All higher
355 SVEF groups were associated with significantly lower response coefficient on proportional
356 response, with the exception of the 2nd quartile (25/31%).

357

358

359 *Response Definition 2: Longitudinal Improvement in Parameters versus Control Groups*

360 *Response to CRT*

361 Across the whole cohort (139 propensity matched pairs, total 278 subjects), there was a clear
362 longitudinal impact of CRT upon SVEF (CRT coefficient 4.0 (1.9-6.1), $p < 0.001$) and QRS duration
363 z-score (-0.7 (-1.2- -0.2), $p = 0.015$). There was no significant CRT-associated longitudinal impact
364 upon NYHA class, total number of HF medications, or somatic growth (in terms of weight or
365 height). There remained no association of CRT with somatic growth on subanalysis of subjects
366 prior to age 18years (192 PSM subjects, Height: 493 measurements, CRT coefficient 1.02 (-8.7-
367 11), $p = 0.84$); Weight: 507 measurements, CRT coefficient 0.95 (-6.4-8.3), $p = 0.80$).

368

369 *Morphological and pathophysiological predictors of response*

370 Longitudinal change in SVEF was assessed within the primary binary subgroups [with/without
371 pacing, with/without CHD, with/without biventricular circulation, with systemic LV or RV]. A
372 significant positive association of SVEF with CRT was seen in 6 of the 8 subgroups (75%) (Figure

373 4). The relationship between CRT and longitudinal SVEF was not significant in patients with a
374 systemic RV, those who were not paced prior to enrollment, and in subgroups with small
375 numbers.

376

377 *Sensitivity analyses*

378 Excluding subjects who underwent concurrent surgical procedures within 30days either side of
379 CRT implant (n=34), overall change in SVEF was similar at +10% [3-21%] across all 118 subjects
380 with early formal SVEF assessment. 74 (63%) were responders in terms of absolute
381 improvement in SVEF and 87 (74%) were responders in terms of proportional improvement in
382 SVEF. Significant univariable and multivariable predictors of response remained unchanged,
383 except that CDtoLWSV was now a significant predictor of absolute response on multivariable
384 analysis (0.93 [0.06-1.83], p=0.032) as well as univariable. On longitudinal analysis of PSM
385 subjects and controls (252 PSM subjects, 830 measurements), SVEF remained significantly
386 associated with CRT (CRT coefficient 2.7 (0.2-5.2), p=0.038).

387

388

389

390 Discussion

391 This study assessed the response to CRT in a large multicenter retrospective cohort of children
392 and patients with CHD. Two measures of response were assessed. One measure used the CRT
393 recipient as their own control, defining response as an improvement in SVEF in the medium
394 term at 6-12months. The second measure used a tightly matched control cohort of non-CRT
395 patients, and compared the longitudinal trajectories of the patients with and without CRT. The
396 main findings are:

397

- 398 • Medium-term improvement in SVEF from baseline

- 399 ○ A majority of subjects responded to CRT, with responders identified within all
400 subgroups

- 401 ○ Those with low baseline EF or conduction delay to the lateral wall of the systemic
402 ventricle (for example, LBBB in a structurally normal heart) were most likely to
403 respond.

- 404 ○ Those without prior ventricular pacing and with ‘complex’ CHD were less likely to
405 respond

- 406 ○ QRS duration was not associated with response

- 407 • Improved long-term trajectory versus controls

- 408 ○ CRT was associated with a general improvement in SVEF and shortening of QRS
409 duration

- 410 ○ Most binarised subgroups demonstrated an improvement in SVEF with CRT

- 411 ○ Those with systemic RV and those without pacing prior to enrollment did not
412 demonstrate a significantly improved SVEF trajectory compared to controls

413

414

415 Patient Anatomical and Pathological Variants

416 By the nature of the patient cohort, there was considerable heterogeneity between each
417 subject. Each subject presents a unique constellation of patient-specific factors, all of which
418 may impact upon CRT response. There is a constant pull between the desire to define the
419 patient groups as homogenously as possible versus the obligation to avoid creating ever smaller
420 divisions that preclude the possibility of meaningful comparison. The six groups were designed
421 to map onto those patient groups that have been defined in prior studies to be potentially good
422 or poor responders to CRT.¹¹ These include pacing-induced cardiomyopathies, systemic LVs,
423 systemic RVs and univentricular circulations^{7-9, 20, 21}.

424

425 Highest Likelihood of Response

426 The absence of consistent significant associations between most of the anatomical and
427 pathological groups and subsequent response to CRT is a significant finding. On assessment of
428 early response (using the patient as their own baseline), the most consistent finding was that
429 patients with lower SVEF tended to be most likely to demonstrate not only a proportional
430 response, but also an absolute response (>5% improvement). This suggests that there may not
431 be a clear cutoff to define when CRT is 'too late', and that even those with severely impaired
432 function may experience an increase in SVEF with CRT.

433

434 Conduction delay to the lateral wall of the systemic ventricle was also a parameter that was
435 significant on univariable analysis of absolute response, and both univariable and multivariable
436 analysis of proportional response. This measure was selected as analogous to LBBB in the
437 functionally normal heart, and may be an important indicator in more complex hearts. Further
438 research is required to assess whether this is associated with epiphenomena such as classical
439 pattern dyssynchrony in the CHD population.²² However, the fact that it was rarely seen in the
440 complex CHD groups (16% of subjects), and yet the response rate in those groups was 40-60%,
441 suggests that this relatively crude index of electrical activation is a useful but not an essential
442 criterion for response to CRT.

443

444 In contrast to many non-CHD adult CRT studies, it was notable that increased QRSd alone was
445 not associated with response by any measure. Some of this difference may be accounted for by
446 the heterogeneity of interventricular conduction delays, but the most significant fact is likely
447 that the vast majority of recipients had a ‘sufficient’ degree of electrical dyssynchrony. 156
448 (93%) had a QRSd z-score>3.55 (the cutoff employed as a marker of equivalency for strict LBBB
449 criteria), and 145 (87%) had QRSd z-score >4.8, the equivalent to around 150msec and the
450 longest QRSd cutoff evaluated in major conventional CRT trials.

451

452 *Lower Likelihood of Response*

453 On longitudinal assessment versus controls, patients without prior ventricular pacing and those
454 with systemic RV did not demonstrate a superior outcome with CRT (Figure 4). This trend was
455 also reflected in the lower medium-term response rates in the group with no prior pacing, and
456 CHD without a biventricular, systemic LV, circulation. Again, in such a heterogenous group,
457 identifying the underlying reasons for these findings is challenging, but a number of factors may
458 be postulated.

459

460 *CRT in Patients without Biventricular Circulation*

461 Increasingly, large studies have demonstrated that ventricular pacing of the single ventricle
462 patient is highly deleterious to long term survival, but no study has identified a clear
463 improvement in outcome with CRT.^{23, 24} At least in part, this is likely related to the limited
464 number of single ventricle patients receiving CRT systems. Numbers in this study remain
465 relatively small, but nevertheless, we identified a significant impact of CRT on long-term SVEF
466 trends. The second response outcome of the study, longitudinal trends versus matched
467 controls, assists determining whether differing responses to CRT are related to weaker effect of
468 CRT or the higher overall risk of deterioration in specific patient groups. In this context, there is
469 an argument that, for patients with a single ventricle, the absence of deterioration may itself be
470 a good response to CRT, and this would explain the discrepancy between the univariable
471 findings of medium-term response (where there is a trend to better CRT response in

472 biventricular patients) and the longitudinal response versus controls. A similar trend in the
473 single ventricle population has been demonstrated previously by the Boston group.²⁵

474

475 *CRT in Patients with Systemic Right Ventricle*

476 The other major anatomical subgroup that has received individual attention in most prior
477 studies is patients with systemic RV. Published results in this cohort have been mixed at best.
478 While some studies have found an attenuated response to CRT^{8,9,26}, others showed no
479 response.^{7,21} A recent meta-analysis found a marginally inferior response in the systemic RV
480 population.¹¹ Our study again found a mixed picture. On medium-term SVEF response, there
481 was a weak (univariable only) trend towards poorer response to CRT, while on longitudinal
482 outcome versus controls there was no significant CRT effect. These findings may be partially
483 attributed to challenges in measuring the EF of the systemic RV, and the latter finding may
484 relate predominantly to sample size (Figure 4). As such, these findings certainly do not suggest
485 that CRT is contraindicated in the systemic RV population, but there is at least weaker evidence
486 of efficacy.

487

488 *Clinical Implications*

489 This study has demonstrated that CRT results in a clear improvement in SVEF in many pediatric
490 and CHD patients, with responders identified in all anatomical and pathophysiological subtypes.

491

492 However, CRT remains a complex intervention with significant risks anticipated both at the time
493 of implant (particularly in those requiring repeat sternotomy) and in a life-time of device
494 management. Therefore, indices to identify those who are most likely to respond remain
495 helpful in weighing risk and benefit. On assessment of both medium-term change in SVEF and
496 longitudinal trajectory versus controls there are significant trends that should be noted. Based
497 upon this data, those with lower SVEF, those with electrical conduction delay to the lateral wall
498 of the systemic ventricle (such as LBBB in those with conventional ventricular orientation) and
499 those with systemic LV are most likely to experience a medium and long-term response.

500

501 Limitations

502 This was a multicenter retrospective study, and as such the delineation of a clinical response to
503 CRT is highly challenging. We have attempted to be as comprehensive as possible, using two
504 outcome measures, one indexed to the patient and one to a tightly matched control group. It is
505 also established that SVEF alone is not the only marker of response, and prospective studies
506 would be significantly enhanced by the formal evaluation of baseline parameters such as
507 cardiopulmonary metabolics and laboratory studies such as BNP or NT-proBNP.

508

509 We chose to include patients with concurrent surgery in the main analyses. Many of these
510 surgical procedures were on the subpulmonary ventricle, but nonetheless, there are inevitably
511 hemodynamic implications for the systemic ventricle and general clinical condition resulting
512 from all structural surgical interventions. Sensitivity analyses suggested a similar result for the
513 main clinical analyses.

514

515 In a similar vein, in common with all major studies of CRT in these patient cohorts, the pediatric
516 and CHD groups have been amalgamated for many of the analyses. HF in pediatric patients
517 without CHD represents a very different pathology to HF in those with CHD, and there is an
518 argument that they should be assessed entirely separately. However, the numbers of patients
519 in each subgroup were small and we have generally aimed for a robust assessment on
520 multivariable analysis to assess and quantify the role of contributing factors.

521

522 Conclusions

523 CRT in children and patients with CHD frequently results in an improvement in SVEF. This study
524 suggests that all the major anatomical and pathophysiological subgroups have the potential to
525 respond to CRT. However, those with lower SVEF, those with electrical conduction delay to the
526 lateral wall of the systemic ventricle (such as LBBB in those with conventional ventricular
527 orientation), and those with systemic LV are most likely to experience a medium- and long-term
528 response.

529 References

530

- 531 1. Epstein AE, DiMarco JP, Ellenbogen KA, Estes lii NAM, Freedman RA, Gettes LS, Gillinov
532 AM, Gregoratos G, Hammill SC and Hayes DL. 2012 ACCF/AHA/HRS Focused Update of the 2008
533 Guidelines for Device-Based Therapy of Cardiac Rhythm Abnormalities. *Circulation Journal*.
534 2013;127:e283-352.
- 535 2. Abraham WT, Fisher WG, Smith AL, Delurgio DB, Leon AR, Loh E, Kocovic DZ, Packer M,
536 Clavell AL, Hayes DL, et al. Cardiac Resynchronization in Chronic Heart Failure. *New England*
537 *Journal of Medicine*. 2002;346:1845-1853.
- 538 3. Bristow MR, Saxon LA, Boehmer JP, Krueger S, Kass DA, De Marco T, Carson P, DiCarlo L,
539 DeMets D, White BG, et al. Cardiac resynchronization therapy with or without an implantable
540 defibrillator in advanced chronic heart failure. *New England Journal of Medicine*.
541 2004;350:2140-50.
- 542 4. Linde C, Abraham WT, Gold MR, St. John Sutton M, Ghio S, Daubert C. Randomized Trial
543 of Cardiac Resynchronization in Mildly Symptomatic Heart Failure Patients and in Asymptomatic
544 Patients With Left Ventricular Dysfunction and Previous Heart Failure Symptoms. *Journal of the*
545 *American College of Cardiology*. 2008;52:1834-1843.
- 546 5. Moss AJ, Hall WJ, Cannom DS, Klein H, Brown MW, Daubert JP, Estes lii NAM, Foster E,
547 Greenberg H, Higgins SL, et al. Cardiac-Resynchronization Therapy for the Prevention of Heart-
548 Failure Events. *New England Journal of Medicine*. 2009;361:1329-38.
- 549 6. Tang ASL, Wells GA, Talajic M, Arnold MO, Sheldon R, Connolly S, Hohnloser SH, Nichol
550 G, Birnie DH, Sapp JL, et al. Cardiac-Resynchronization Therapy for Mild-to-Moderate Heart
551 Failure. *New England Journal of Medicine*. 2010;363:2385-2395.
- 552 7. Dubin AM, Janousek J, Rhee E, Strieper MJ, Cecchin F, Law IH, Shannon KM, Temple J,
553 Rosenthal E, Zimmerman FJ, et al. Resynchronization Therapy in Pediatric and Congenital Heart
554 Disease Patients. *J Am Coll Cardiol*. 2005;46:2277-2283.
- 555 8. Janoušek J, Gebauer RA, Abdul-Khaliq H, Turner M, Kornyei L, Grollmuß O, Rosenthal E,
556 Villain E, Früh A, Paul T, et al. Cardiac resynchronisation therapy in paediatric and congenital
557 heart disease: Differential effects in various anatomical and functional substrates. *Heart*.
558 2009;95:1165-1171.
- 559 9. Cecchin F, Frangini Pa, Brown DW, Fynn-Thompson F, Alexander ME, Triedman JK,
560 Gauvreau K, Walsh EP and Berul CI. Cardiac resynchronization therapy (and multisite pacing) in
561 pediatrics and congenital heart disease: five years experience in a single institution. *Journal of*
562 *cardiovascular electrophysiology*. 2009;20:58-65.
- 563 10. Chubb H, Rosenthal DN, Almond CS, Ceresnak SR, Motonaga KS, Arunamata AA, Long J,
564 Trela AV, Hanisch D, McElhinney DB and Dubin AM. Impact of Cardiac Resynchronization
565 Therapy on Heart Transplant-Free Survival in Pediatric and Congenital Heart Disease Patients.
566 *Circ Arrhythm Electrophysiol*. 2020;13:e007925.
- 567 11. Tokavanich N, Mongkonsritragoon W, Sattawatthamrong S, Techasatian W, Siranart N,
568 Prasitlumkum N, Navaravong L and Chokesuwattanaskul R. Outcomes of cardiac
569 resynchronization therapy in congenital heart disease: A meta-analysis and systematic review. *J*
570 *Cardiovasc Electrophysiol*. 2024;35:249-257.

- 571 12. Chubb H, Mah D, Shah M, Lin KY, Peng D, Hale B, May LJ, Etheridge SP, Goodyer W,
572 Ceresnak S, et al. Multicenter Study of Survival Benefit of Cardiac Resynchronization Therapy in
573 Pediatric and Congenital Heart Disease. *JACC Electrophysiology*. 2024.
- 574 13. Rickard J, Michtalik H, Sharma R, Berger Z, Iyoha E, Green AR, Haq N and Robinson KA.
575 Predictors of response to cardiac resynchronization therapy: A systematic review. *Int J Cardiol*.
576 2016;225:345-352.
- 577 14. Schiller O, Dham N, Greene EA, Heath DM, Alexander ME, Berul CI. Pediatric dilated
578 cardiomyopathy patients do not meet traditional cardiac resynchronization criteria. *Journal of*
579 *Cardiovascular Electrophysiology*. 2015;26:885-889.
- 580 15. Chubb H, Motonaga KS. Cardiac resynchronization and implantable defibrillators in adults
581 with congenital heart disease. *Heart Fail Rev*. 2020;25:657-670.
- 582 16. Strauss DG, Selvester RH, Wagner GS. Defining left bundle branch block in the era of
583 cardiac resynchronization therapy. *Am J Cardiol*. 2011;107:927-34.
- 584 17. Prineas R, Crow RH B. *The Minnesota Code Manual of Electrocardiographic Findings*
585 *Standards and Procedures for Measurement and Classification*. London: John Wright/PSG Inc;
586 1982.
- 587 18. Anavekar NS, Gerson D, Skali H, Kwong RY, Yucel EK, Solomon SD. Two-dimensional
588 assessment of right ventricular function: an echocardiographic-MRI correlative study.
589 *Echocardiography*. 2007;24:452-6.
- 590 19. Chung ES, Leon AR, Tavazzi L, Sun JP, Nihoyannopoulos P, Merlino J, Abraham WT, Ghio
591 S, Leclercq C, Bax JJ, et al. Results of the predictors of response to CRT (PROSPECT) trial.
592 *Circulation*. 2008;117:2608-2616.
- 593 20. Flugge AK, Wasmer K, Orwat S, Abdul-Khaliq H, Helm PC, Bauer U, Baumgartner H, Diller
594 GP and German Competence Network for Congenital Heart Defects I. Cardiac resynchronization
595 therapy in congenital heart disease: Results from the German National Register for Congenital
596 Heart Defects. *Int J Cardiol*. 2018;273:108-111.
- 597 21. Koyak Z, de Groot JR, Krimly A, Mackay TM, Bouma BJ, Silversides CK, Oechslin EN, Hoke
598 U, van Erven L, Budts W, et al. Cardiac resynchronization therapy in adults with congenital heart
599 disease. *Europace*. 2018;20:315-322.
- 600 22. Risum N, Jons C, Olsen NT, Fritz-Hansen T, Bruun NE, Hojgaard MV, Valeur N, Kronborg
601 MB, Kisslo J and Sogaard P. Simple regional strain pattern analysis to predict response to
602 cardiac resynchronization therapy: Rationale, initial results, and advantages. *American Heart*
603 *Journal*. 2012;163:697-704.
- 604 23. Poh CL, Celermajor DS, Grigg LE, Kalman JM, McGuire MA, Gentles TL, Radford DJ,
605 Bullock A, Disney PJS, Winlaw D, et al. Pacemakers are associated with a higher risk of late
606 death and transplantation in the Fontan population. *Int J Cardiol*. 2019;282:33-37.
- 607 24. Bulic A, Zimmerman FJ, Ceresnak SR, Shetty I, Motonaga KS, Freter A, Trela AV, Hanisch
608 D, Russo L, Avasarala K and Dubin AM. Ventricular pacing in single ventricles—A bad
609 combination. *Heart Rhythm*. 2017;14:853-857.
- 610 25. O'Leary ET, Gauvreau K, Alexander ME, Banka P, Bezzerides VJ, Fynn-Thompson F,
611 Triedman JK, Walsh EP and Mah DY. Dual-Site Ventricular Pacing in Patients With Fontan
612 Physiology and Heart Block: Does it Mitigate the Detrimental Effects of Single-Site Ventricular
613 Pacing? *JACC Clin Electrophysiol*. 2018;4:1289-1297.

614 26. Sakaguchi H, Miyazaki A, Yamada O, Kagisaki K, Hoashi T, Ichikawa HOhuchi H. Cardiac
615 Resynchronization Therapy for Various Systemic Ventricular Morphologies in Patients With
616 Congenital Heart Disease. *Circulation Journal*. 2015;79:649-655.

617

618 Tables

	All	Ventricularly Paced Pre-Enrollment (Vp>40%)			No Significant Ventricular Pacing Pre-Enrollment			p-value (R ²)
		Group 1: Non-CHD	Group 2: BiV circ with sys LV	Group 3: Complex CHD	Group 4: Non-CHD	Group 5: BiV circ with sys LV	Group 6: Complex CHD	
	n=167	n=27	n=58	n=20	n=18	n=27	n=17	
Age (years)	12 [4.3-20]	4.4 [0.8-17]	11.3 [7.2-21]	13.6 [5.2-33]	14.4 [9.2-16]	15 [9.7-24]	18.3 [8.1-22]	0.008 (0.06)
Male sex (n)	95 (57%)	12 (44%)	32 (55%)	9 (45%)	10 (56%)	22 (81%)	10 (59%)	0.09 (0.03)
Race (non-white, n)	23 (14%)	5 (19%)	8 (14%)	0 (0%)	3 (17%)	5 (19%)	2 (12%)	0.50 (0.03)
Weight (kg)	45.9 (+/-34.1)	35.2 (+/-36.7)	43.2 (+/-27.9)	44.5 (+/-28.3)	51.4 (+/-41.9)	57.5 (+/-42.9)	49.2 (+/-28)	0.23 (0.01)
SV EF (%)	31.2 (+/-8.8)	29.8 (+/-10.2)	31.4 (+/-8.7)	30.7 (+/-8.2)	29.2 (+/-8.6)	32.1 (+/-9.7)	34.1 (+/-5.7)	0.56 (0.02)
Cardiomyopathy (n)	48 (29%)	16 (59%)	10 (17%)	0 (0%)	18 (100%)	3 (11%)	1 (6%)	<0.001 (0.44)
QRS Duration (msec)	159 (+/-28)	154 (+/-33)	169 (+/-19)	169 (+/-27)	140 (+/-28)	156 (+/-31)	148 (+/-23)	<0.001 (0.10)
QRS Duration z-score	7.4 (+/-2.7)	8 (+/-2.3)	8.4 (+/-2.4)	8.2 (+/-2.7)	5.6 (+/-3)	6.5 (+/-2.5)	5.9 (+/-2.1)	<0.001 (0.14)
Conduction Delay to Lateral Wall of SV (n)	69 (41%)	11 (41%)	27 (47%)	2 (10%)	10 (56%)	15 (56%)	4 (24%)	0.01 (0.06)
NYHA Class	2 [1.5-3]	2 [1-3]	2 [1.5-3]	2 [2-3]	3 [3-3]	2 [1-2]	2 [1.5-3]	0.04 (0.05)
Listed for Heart Transplant	7 (4%)	1 (4%)	0 (0%)	2 (10%)	2 (11%)	1 (4%)	1 (6%)	0.26 (0.01)
HF medications (n, total)	3 [2-4]	2 [1-4]	2 [1-3]	3 [2-4]	3 [2-4]	3 [1-4]	3 [3-3]	0.23 (0.01)
Arrhythmia meds (n, total)	0 [0-1]	0 [0-1]	0 [0-1]	0 [0-0]	1 [0-1]	0 [0-1]	1 [0-2]	0.27 (0.01)
Genetic/metabolic condition	29 (17%)	2 (7%)	16 (28%)	2 (10%)	3 (17%)	5 (19%)	1 (6%)	0.13 (0.02)
Pre-CRT Device								
PPM	103 (62%)	26 (96%)	56 (97%)	19 (95%)	0 (0%)	1 (4%)	1 (6%)	<0.001 (0.85)
ICD	8 (5%)	0 (0%)	1 (2%)	1 (5%)	2 (11%)	2 (7%)	2 (12%)	0.27 (0.01)
Vp pre CRT	100 [0-100]	100 [100-100]	100 [100-100]	100 [100-100]	0 [0-0]	0 [0-0]	0 [0-0]	0.63* (0.01)
CRT Device								
Transvenous	49 (29%)	5 (19%)	13 (22%)	4 (20%)	12 (67%)	10 (37%)	5 (29%)	0.004 (0.07)
Epicardial	109 (65%)	21 (78%)	40 (69%)	15 (75%)	5 (28%)	17 (63%)	11 (65%)	0.013 (0.06)
Hybrid	9 (5%)	1 (4%)	5 (9%)	1 (5%)	1 (6%)	0 (0%)	1 (6%)	0.73 (0.01)
CRT-D	43 (26%)	2 (7%)	11 (19%)	5 (25%)	10 (56%)	10 (37%)	5 (29%)	0.005 (0.07)
Concurrent Surgery at Time of CRT Implant								
Same procedure	29 (17%)	0 (0%)	10 (17%)	5 (25%)	2 (11%)	11 (41%)	1 (6%)	0.002 (0.09)
<30days	5 (3%)	0 (0%)	2 (3%)	0 (0%)	0 (0%)	3 (11%)	0 (0%)	0.12 (0.03)

619 *Table 1. Baseline Demographics. BiV: biventricular, SV EF: systemic ventricle ejection fraction,*
 620 *NYHA: New York Heart Association, HTX: heart transplant listing prior to implant, HF: heart*
 621 *failure, PPM: permanent pacemaker, Vp: ventricular pacing, CRT-D: cardiac resynchronization*
 622 *therapy-defibrillator.*

623

	All	Ventricularly Paced			No Significant ventricular Pacing			p-value (R ²)
		Group 1: Non-CHD	Group 2: BiV circ with sys LV	Group 3: Other CHD	Group 4: Non-CHD	Group 5: BiV circ with sys LV	Group 6: Other CHD	
	n=150	n=24	n=52	n=18	n=17	n=24	n=15	
Absolute Change in Systemic Ventricular Ejection Fraction								
Improved (>5%)	96 (64%)	19 (79%)	34 (65%)	9 (50%)	10 (59%)	20 (83%)	4 (27%)	0.005 (0.08)
No change (0-5%)	26 (17%)	2 (8%)	9 (17%)	5 (28%)	4 (24%)	2 (8%)	4 (27%)	
Worse (<0%)	28 (19%)	3 (13%)	9 (17%)	4 (22%)	3 (18%)	2 (8%)	7 (47%)	
Proportional Change in Systemic Ventricular Ejection Fraction								
Improved (>10%)	110 (73%)	19 (79%)	38 (73%)	12 (67%)	13 (76%)	20 (83%)	8 (53%)	0.15 (0.05)
No change (0-10%)	12 (8%)	2 (8%)	5 (10%)	2 (11%)	1 (6%)	2 (8%)	0 (0%)	
Worse (<0%)	28 (19%)	3 (13%)	9 (17%)	4 (22%)	3 (18%)	2 (8%)	7 (47%)	
Change in Clinical Parameters following CRT								
Increase in SVEF (%)	11 [3-21]	18 [10-26]	11 [3-19]	10 [1-23]	7 [5-16]	15 [7-20]	5 [-5-17]	0.09 (0.03)
Decrease in QRS duration (ms)	18 (+/-24)	22 (+/-20)	23 (+/-22)	22 (+/-22)	0 (+/-27)	9 (+/-21)	15 (+/-29)	0.005 (0.08)
Decrease in QRS duration z-score	1.9 (+/-2.4)	2.5 (+/-2)	2.5 (+/-2.2)	2.4 (+/-2.2)	0.3 (+/-2.7)	1.1 (+/-2.2)	1.6 (+/-2.8)	0.005 (0.11)
Decrease in number HF meds (n)	0.04 (+/-0.92)	0.02 (+/-0.77)	0.15 (+/-0.97)	0.05 (+/-0.85)	-0.06 (+/-1.03)	-0.04 (+/-1.1)	-0.14 (+/-0.57)	0.88 (0.02)
Decrease in NYHA Class	0.6 (+/-1)	0.8 (+/-1.3)	0.7 (+/-0.9)	0.6 (+/-0.7)	0.9 (+/-0.9)	0.4 (+/-0.8)	0.4 (+/-1)	0.53 (0.03)
Death or transplant within 1 year	15 (9%)	1 (4%)	3 (5%)	4 (20%)	4 (22%)	0 (0%)	3 (18%)	0.02 (0.08)

624 *Table 2. Response to CRT by Subgroup. Please see methods for definitions of improvement/no*
 625 *change/worsening of primary Endpoints. p-value is one-way ANOVA, grouped by the six*
 626 *subtypes.*

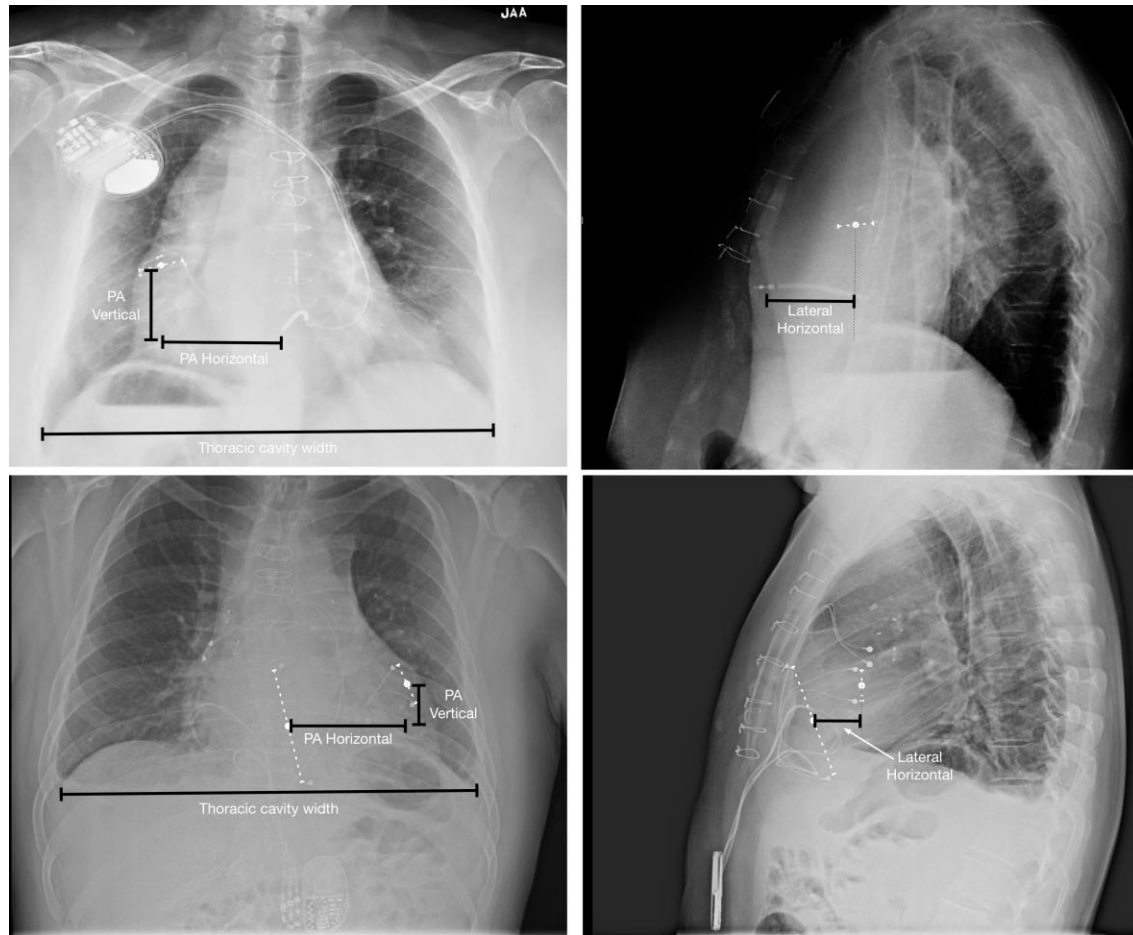
627

628

	Absolute Change in Systemic Ventricular Ejection Fraction				Proportional Change in Systemic Ventricular Ejection Fraction			
	Univariable		Multivariable		Univariable		Multivariable	
	Coef	p-value	Coef	p-value	Coef	p-value	Coef	p-value
Age (years)	-0.02 (-0.04-0)	0.062			-0.02 (-0.04-0)	0.041	-0.01 (-0.03-0.02)	0.567
Sex (male)	-0.33 (-0.99-0.32)	0.32			-0.81 (-1.58--0.05)	0.038	-0.64 (-1.51-0.24)	0.153
Race (non-white)	0.38 (-0.7-1.46)	0.49			-0.02 (-1.11-1.06)	0.97		
Weight (kg)	-0.01 (-0.02-0)	0.2			-0.01 (-0.02-0)	0.25		
Systemic Ventricle EF (%)	-0.05 (-0.09--0.01)	0.013	-0.05 (-0.09-0)	0.039	-0.08 (-0.12--0.03)	0.001	-0.08 (-0.13--0.02)	0.006
Cardiomyopathy (n)	-0.22 (-0.91-0.48)	0.55			-0.39 (-1.14-0.36)	0.31		
Biventricular Circulation	1.07 (0.15-1.99)	0.022	0.86 (-0.16-1.88)	0.1	0.53 (-0.53-1.59)	0.33		
Systemic LV	0.96 (0.14-1.78)	0.021	0.4 (-0.56-1.35)	0.417	0.64 (-0.27-1.55)	0.17		
Congenital Heart Disease	-0.41 (-1.17-0.35)	0.29			-0.35 (-1.2-0.49)	0.41		
Prior pacing (Vp>40%)	0.24 (-0.43-0.91)	0.48			0.07 (-0.67-0.81)	0.86		
QRS duration (ms)	-0.01 (-0.02-0)	0.11			-0.02 (-0.03-0)	0.037	-0.02 (-0.03-0)	0.061
QRS duration z-score	-0.04 (-0.17-0.08)	0.51			-0.06 (-0.2-0.08)	0.41		
Conduction delay to Lat Wall SV	0.94 (0.23-1.66)	0.01	0.7 (-0.03-1.50)	0.059	1.21 (0.36-2.07)	0.006	1.28 (0.36-2.2)	0.006
Lead Separation Ratio	-3.47 (-6.86--0.09)	0.044	-3.06 (-6.66-0.55)	0.097	-3.65 (-7.34-0.04)	0.053		
NYHA Class	-0.11 (-0.49-0.27)	0.58			-0.04 (-0.47-0.38)	0.84		
Number of HF Medications (n)	-0.11 (-0.35-0.13)	0.37			-0.01 (-0.28-0.26)	0.94		
Genetic/Metabolic Disorder	0.41 (-0.48-1.29)	0.37			-0.02 (-0.92-0.87)	0.96		
Subtype 1	NA	NA			NA	NA		
Subtype 2	-0.67 (-1.8-0.47)	0.25			-0.34 (-1.49-0.81)	0.56		
Subtype 3	-1.21 (-2.51-0.1)	0.071			-0.64 (-2.01-0.73)	0.36		
Subtype 4	-0.89 (-2.24-0.47)	0.2			-0.2 (-1.68-1.29)	0.8		
Subtype 5	0.3 (-1.15-1.76)	0.68			0.29 (-1.16-1.73)	0.7		
Subtype 6	-2.2 (-3.57--0.83)	0.002	-1.4 (-2.4 - -0.4)*	0.008 *	-1.44 (-2.86--0.03)	0.046	-6.5 (-2.5--0.2) [†]	0.021

629 Table 3. Association of baseline characteristics and change in systemic ventricular ejection
 630 fraction following CRT. Ordinal logistic regression, with categories as defined in methods.

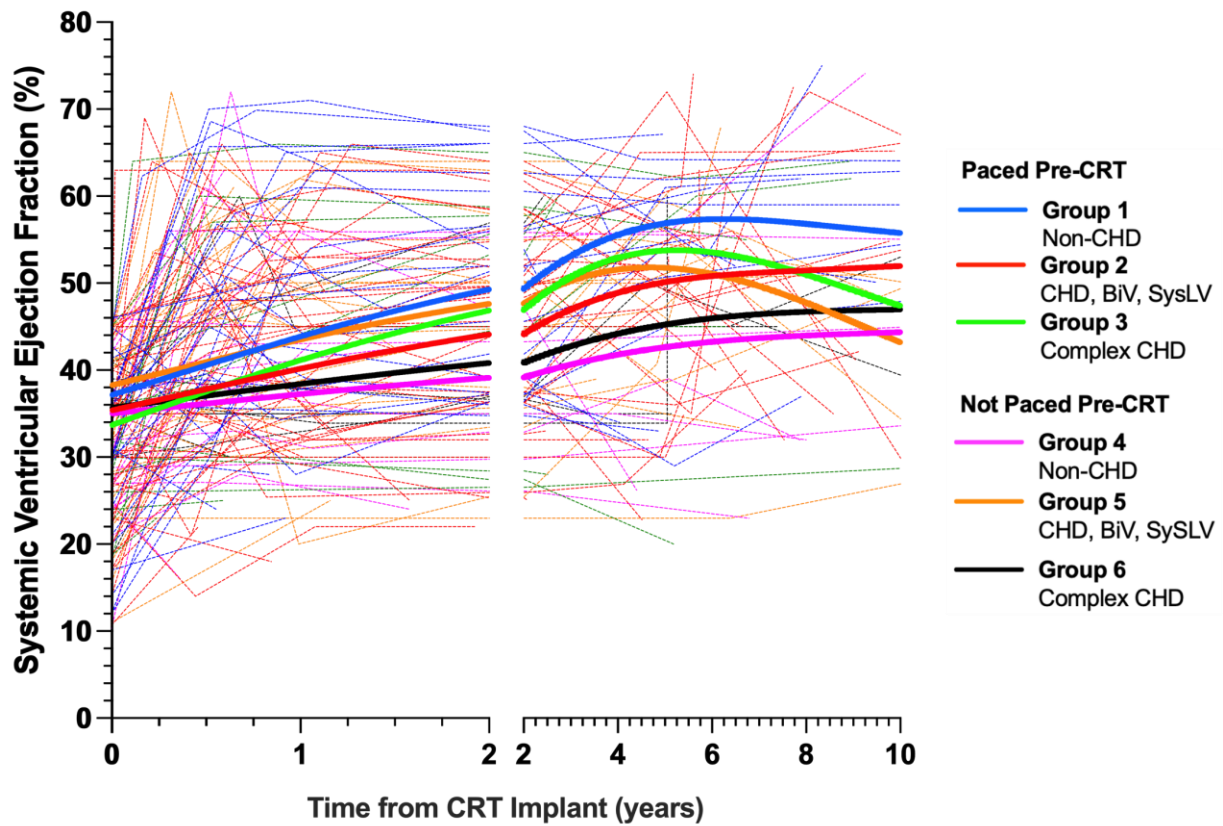
631 * For the multivariable analysis of Subgroup 6, Systemic LV and biventricular circulation were
 632 excluded due to collinearity



633

634 *Figure 1. Measurement of separation of the ventricular leads. Top row- endovascular system,*

635 *bottom row- epicardial system.*

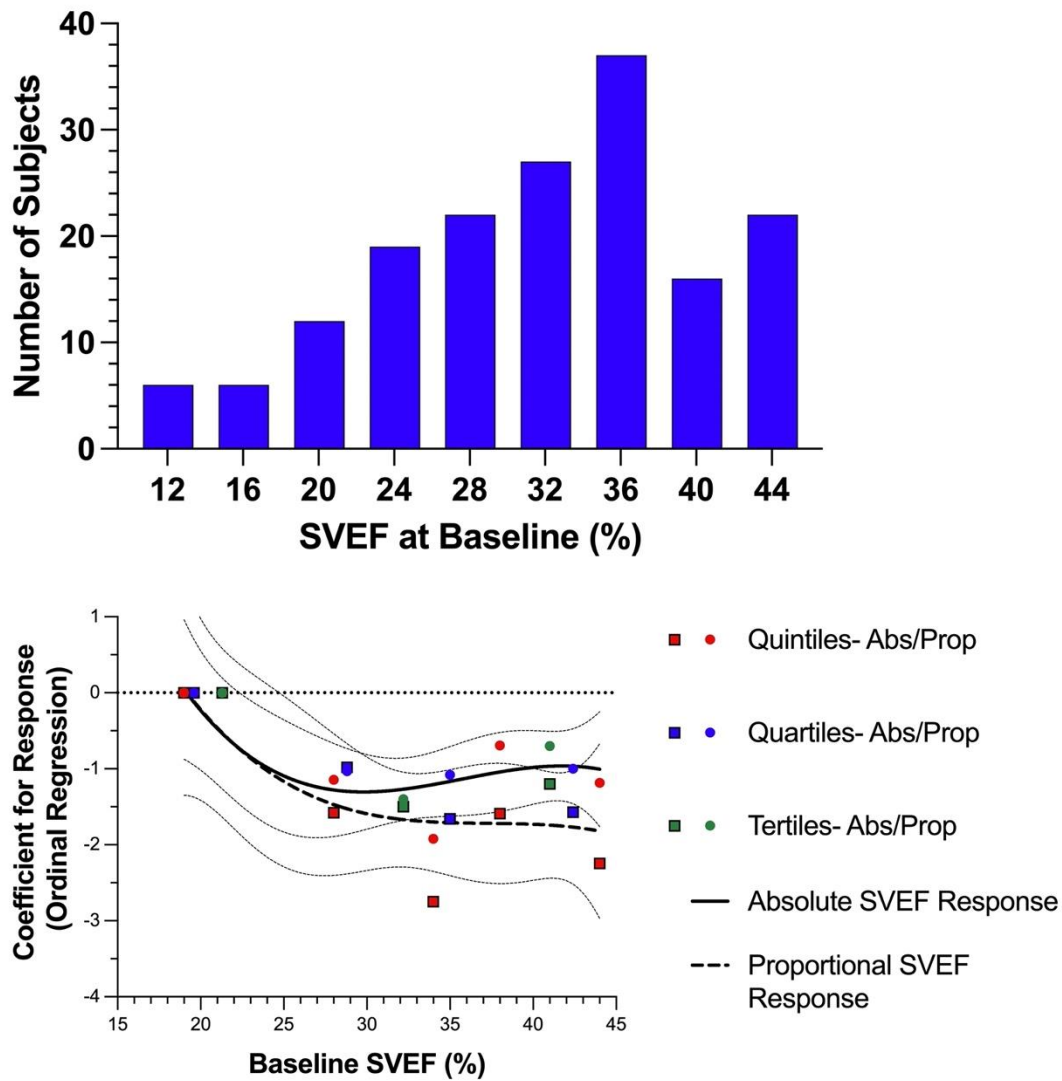


636

637 *Figure 2. Change in systemic ventricular ejection fraction with time from CRT implant (split x-*

638 *axis). CHD: congenital heart disease, BiV: biventricular, SysLV: systemic left ventricle. Best fit*

639 *line calculated using cubic regression.*



640

641 *Figure 3. (Upper) Frequency histogram of systemic ventricle ejection fraction (SVEF) at baseline.*

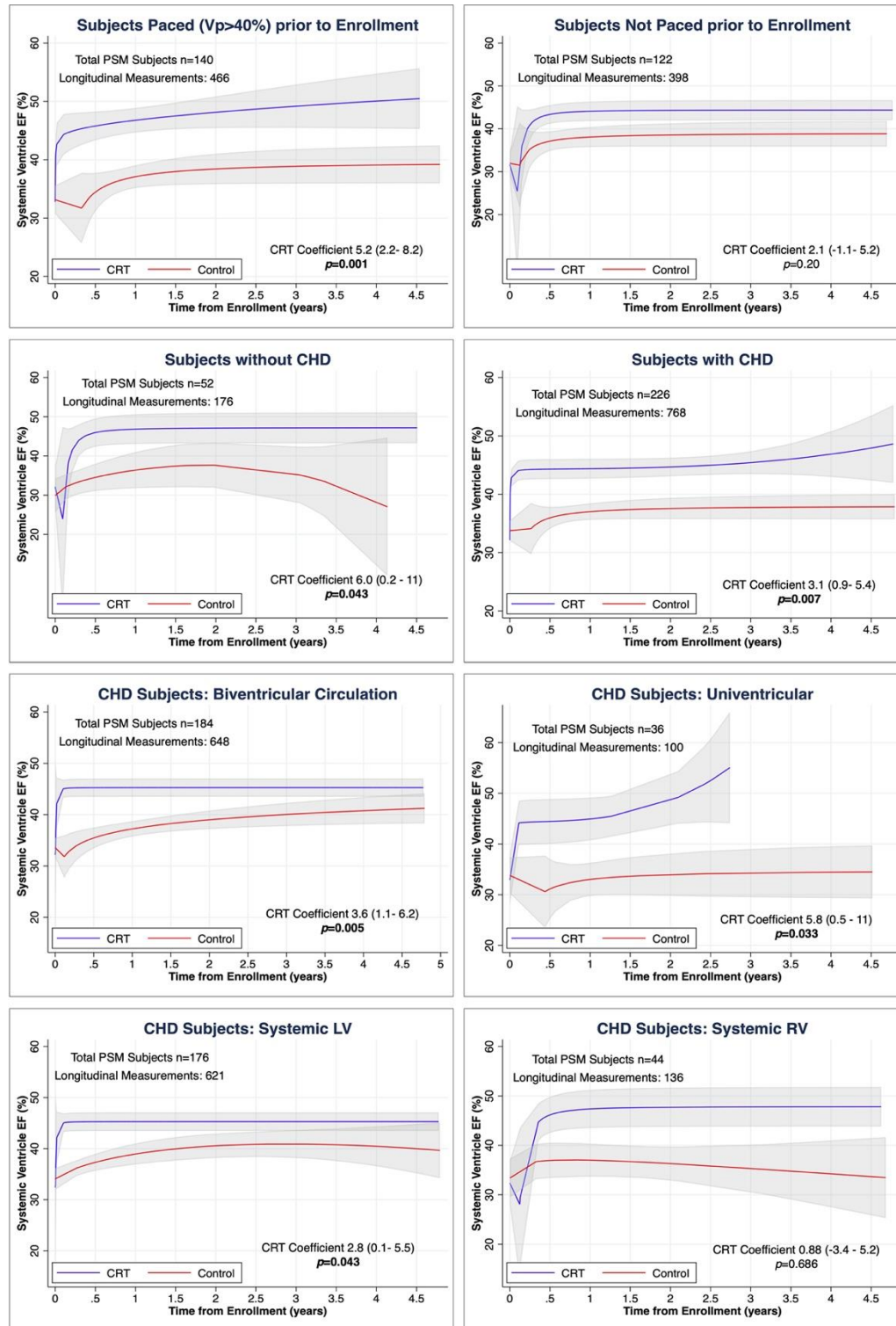
642 *(Lower) Coefficient for response (ordinal regression) versus lowest quintile/quartile/tertile for*

643 *absolute SVEF response (Abs) and proportional SVEF response (Prop). Upper and lower tertile*

644 *cutoffs were 10/28%, 28/35% and 36/45%, respectively. Quartile cutoffs were 10/25%, 25/31%,*

645 *31/37% and 37/45%. Quintile cutoffs were 10/24%, 24/30%, 30/35%, 36/40%, and 40/45%.*

It is made available under a [CC-BY-NC-ND 4.0 International license](https://creativecommons.org/licenses/by-nc-nd/4.0/).



646

647 *Figure 4. Longitudinal plots presenting the long-term trajectory of systemic ventricle ejection*

648 *fraction (SVEF) within the eligible propensity score matched (PSM) cohorts with and without*

649 *CRT. Separate PSM was performed for each subanalysis. Plots are fractional polynomial plots*

650 *and the pacing effect is estimated using multilevel mixed-effects linear regression modeling with*
651 *cubic model.*