

A multi-level gene-diet interaction analysis of fish oil supplementation and 14 circulating polyunsaturated fatty acids-related traits identifies the *FADS* and *GRP12* loci

Susan Adanna Ihejirika<sup>1</sup>, Alexandra Huong Chiang<sup>2</sup>, Aryaman Singh<sup>2</sup>, Eunice Stephen<sup>2</sup>, Han Chen<sup>3</sup>, Kaixiong Ye<sup>1,2\*</sup>

<sup>1</sup> Institute of Bioinformatics, University of Georgia, Athens, GA, 30602, USA

<sup>2</sup> Department of Genetics, University of Georgia, Athens, GA, 30602, USA

<sup>3</sup> Human Genetics Center, Department of Epidemiology, School of Public Health, The University of Texas Health Science Center at Houston, Houston, TX, 77030, USA

**\*Corresponding Author:**

Kaixiong Ye, PhD

Department of Genetics, C220 Davison Life Sciences Complex, University of Georgia,  
120 East Green Street, Athens, GA 30602

Phone: 706-542-5898 Email: [kaixiong.ye@uga.edu](mailto:kaixiong.ye@uga.edu)

## 1 **Abstract**

2 Fish oil supplements (FOS) are known to alter circulating levels of polyunsaturated fatty  
3 acids (PUFAs) among individuals but in a heterogeneous manner. These varied  
4 responses may result from unidentified gene-FOS interactions. To identify genetic  
5 factors that interact with FOS to alter the circulating levels of PUFAs, we performed a  
6 multi-level genome-wide interaction study (GWIS) of FOS on 14 plasma measurements  
7 in 200,060 unrelated European-ancestry individuals from the UK Biobank. From our  
8 single-variant tests, we identified genome-wide significant interacting SNPs ( $P < 5 \times 10^{-8}$ )  
9 <sup>8</sup>) in the *FADS1-FADS2* gene cluster for total omega-3, omega-3%, docosapentaenoic  
10 acid (DHA), DHA% and the omega-6 to omega-3 ratio. Among the interaction signals for  
11 omega-3%, the lead SNP, rs35473591 (C>CT, CT allele frequency = 0.34), had a lower  
12 association effect size in the FOS-taking group ( $\beta = 0.35$  for allele C) than that in the  
13 group without FOS ( $\beta = 0.42$ ). Likewise, the effect sizes of associations between FOS  
14 and omega-3% varied across the three genotype groups ( $\beta = 0.45, 0.50, \text{ and } 0.59$ ,  
15 respectively, in C/C, C/CT, and CT/CT). Our gene-level aggregate and transcriptome-  
16 wide interaction analyses identified significant signals at two loci, around *FADS1-*  
17 *FADS2* and *GRP12*. The contribution of genome-wide gene-FOS interactions to  
18 phenotypic variance was statistically significant in omega-3-related traits. This systemic  
19 gene-FOS GWIS contributes to our understanding of the genetic architecture of  
20 circulating PUFAs underlying FOS response and informs personalized dietary  
21 recommendations.

22

## 23 **Introduction**

24 Genetic<sup>1-3</sup> and environmental factors, such as diet<sup>4-6</sup>, influence the circulating levels of  
25 polyunsaturated fatty acids (PUFAs). PUFAs are fatty acids with 18 to 24 carbons and  
26 multiple double bonds. They fall into two main families, omega-3 and omega-6,  
27 depending on which carbon the first double bond falls on from the methyl end of the  
28 carbon chain. PUFAs play crucial roles in various physiological processes, including  
29 immune function, cardiovascular health, brain development, and cognitive  
30 performance.<sup>7-9</sup> Alpha-linolenic acid (ALA) and linoleic acid (LA) are essential omega-3  
31 and omega-6 fatty acids, respectively, that can only be obtained from dietary sources  
32 and act as precursors for synthesizing long-chain PUFAs.<sup>7</sup> Long-chain PUFAs can be  
33 obtained from diet or produced endogenously in the presence of the necessary  
34 precursors.<sup>7</sup> Fish oil supplements (FOS) are a rich, readily available source of long-  
35 chain omega-3 PUFAs, particularly eicosapentaenoic acid (EPA) and docosapentaenoic  
36 acid (DHA).<sup>10</sup> Additionally, FOS intake alters circulating PUFA concentrations similarly  
37 to fish consumption.<sup>11</sup>

38

39 The interactions between genetic variants and dietary PUFAs also influence circulating  
40 PUFA concentrations.<sup>7,8,12-19</sup> This means that omega-3 PUFAs obtained through FOS  
41 can alter the genetic effects on circulating PUFA levels, and that genetic variants can  
42 modify the effects of FOS on the same phenotypes. One of the relevant genetic loci, the  
43 *FADS* locus, contains the *FADS1* and *FADS2* genes, which encode the delta-5 (D5)  
44 and delta-6 (D6) desaturase enzymes, respectively. These membrane-bound enzymes  
45 introduce cis double bonds at the D5 and D6 positions in PUFAs, the rate-limiting steps

46 in long-chain PUFA biosynthesis.<sup>20,21</sup> Juan *et al.* found that higher dietary EPA and DHA  
47 consumption increases circulating EPA proportions.<sup>12</sup> However, genotypes at the  
48 rs174546 *FADS1* SNP (C>T) impacted the extent of that increase. For every 1-standard  
49 deviation (SD) increase in EPA intake, individuals with the C/C genotype saw an  
50 average increase of 3.7% in the circulating EPA level, while those with the T/T genotype  
51 saw an average increase of 7.8%. These gene-diet interactions may explain some of  
52 the heterogeneity in circulating PUFA levels in response to omega-3 PUFA  
53 supplementation.<sup>22</sup> Furthermore, these genotype-dependent responses may provide  
54 some insights into the inconsistent results in observational studies and randomized  
55 controlled trials (RCTs) investigating the effect of omega-3 PUFA supplementation on  
56 various outcomes,<sup>8</sup> such as the risk of cardiometabolic diseases, Alzheimer's disease,  
57 cancer, and inflammation.<sup>23-27</sup>

58  
59 Despite advances in characterizing genetic loci interacting with dietary omega-3 PUFAs,  
60 most existing gene-dietary PUFAs interaction studies have various weaknesses and  
61 limitations. Most of them examined only candidate genes or variants<sup>12-18</sup>. Some were  
62 performed in specific contexts, such as disease risk and related outcomes<sup>19,23-27</sup>, while  
63 others only examined circulating metabolites other than PUFAs as outcomes.<sup>19,28</sup> They  
64 were also limited by small sample sizes. This leaves a gap in understanding the effects  
65 of interactions between genome-wide loci and dietary omega-3 PUFAs on circulating  
66 PUFAs in a generally healthy cohort.

67

68 To this end, we conducted a large-scale gene-diet interaction analysis (N=200,060) of  
69 FOS on 14 circulating PUFAs-related measurements in the UK Biobank cohort<sup>29,30</sup> to  
70 systematically identify genetic factors that interact with FOS to alter levels of plasma  
71 PUFAs. We then performed a transcriptome-wide interaction study (TWIS) to identify  
72 genes whose expression interacts with FOS. Lastly, we estimated the phenotypic  
73 variance explained by genome-wide interactions with FOS. Our study is the first large-  
74 scale GWIS of FOS on the circulating levels of PUFAs.

## 75 **Methods**

### 76 **Cohort**

77 The UK Biobank is a large, population-based prospective study of over 500,000  
78 volunteer participants recruited between 2006 and 2010 from across England, Wales,  
79 and Scotland. The participants were between the ages of 40 and 69 years. At  
80 recruitment, participants provided sociodemographic, lifestyle, environmental, clinical,  
81 and biochemical information through touchscreen questionnaires, face-to-face  
82 interviews, and physiological measurements. Plasma samples were provided for  
83 genotyping and nuclear magnetic resonance (NMR) spectroscopy-based metabolomic  
84 measurements.<sup>29,30</sup> The UK Biobank received ethical approval from the National  
85 Research Ethics Service Committee North West–Haydock (reference ID 11/ NW/0382).  
86 The use of participants' data in this study was approved under Project 48818.

87

### 88 **Participant Inclusion and Exclusion**

89 In this study, we restricted our participants to those who were of genetically determined  
90 European ancestry<sup>31</sup>, did not have a high degree of kinship with other volunteers, were  
91 not outliers for heterozygosity or missing genotype rate, had matched self-reported and  
92 genetic sex, and had no sex chromosome aneuploidy (Figure S1). All UK Biobank  
93 participants provided written informed consent upon recruitment, authorizing the storage  
94 and use of their provided biological, medical, and genetic data for health-related  
95 research purposes. Additionally, participants who had withdrawn their consent as of  
96 February 22<sup>nd</sup>, 2022, were removed (N=114).

97

## 98 **Genotype**

99 The genotype data used in this study was version 3 of the UK Biobank genotyping  
100 release, previously described in detail.<sup>29</sup> This data included genotyping of ~820,000  
101 variants done with either the UK BiLEVE Axiom Array or the UKB Axiom Array. It also  
102 included initial quality control and imputation of variants using a merged reference panel  
103 of the Haplotype Reference Consortium (HRC) and UK10K.<sup>29</sup> For further genotype QC,  
104 we selected only autosomal variants with imputation quality score (INFO) > 0.5, minor  
105 allele frequency (MAF) > 1%, genotype missingness per individual < 5%, genotype  
106 missingness per variant < 2%, and Hardy-Weinberg equilibrium (HWE)  $p$ -value <  $1.0 \times$   
107  $10^{-6}$  using PLINK2 alpha-v2.3.<sup>32</sup>

108

## 109 **Phenotype**

110 Finland-based Nightingale Health Ltd. performed NMR metabolomic measurement of  
111 251 metabolic biomarkers for approximately 280,000 participants. The UK Biobank  
112 released this data in two phases – Phases One and Two. Phase One release consisted  
113 of plasma measurements for 120,000 randomly selected samples. Phase Two  
114 consisted of measurements for individuals in Phase One and an additional 170,000  
115 samples. Absolute circulating levels of fatty acids, including PUFAs and  
116 monounsaturated fatty acids (MUFAs), were measured and reported in mmol/L. The  
117 proportion of each PUFA to total fatty acids was expressed as a percentage. We  
118 investigated 14 circulating PUFAs and MUFAs-related traits as our outcomes. The 14  
119 phenotypes were the absolute circulating levels of total PUFAs, total MUFAs, omega-3  
120 PUFAs, omega-6 PUFAs, LA, and DHA; their relative percentages in total fatty acids

121 (i.e., PUFAs%, MUFAs%, omega-3%, omega-6%, LA%, and DHA%), and the ratios of  
122 PUFAs to MUFAs and omega-6 to omega-3. All phenotypes were rank-based inverse  
123 normal transformed.

124

## 125 **Dietary Exposure**

126 The primary exposure of interest in this study is FOS. We used the UK Biobank dietary  
127 questionnaire administered during recruitment to determine the exposure status. This  
128 questionnaire was a touchscreen survey about the intake frequency of common food  
129 and drink items. A total of 497,666 participants filled these out during the initial  
130 assessment center visit between 2006 and 2010. Participants were asked about mineral  
131 and other dietary supplements, “Do you regularly take any of the following? (You can  
132 select more than one answer)”, and “fish oil (including cod liver oil)” was one of the  
133 options (Data Field 6179).

134

## 135 **Genome-wide Interaction Analysis**

136 We performed single-variant interaction tests with the Gene-Environment interaction  
137 analysis in Millions of samples (GEM) tool.<sup>33</sup> GEM implements a generalized linear  
138 model for unrelated individuals. GEM conducts tests for marginal effects, interaction  
139 effects (1-degree of freedom tests), and joint tests for genetic main and interaction  
140 effects (2-degree of freedom tests). In this analysis, only results from the 1-degree of  
141 freedom (1df) test were interpreted due to our interest in strong interaction effects. We  
142 used age, sex, age-by-sex, and the first ten principal components as the covariates in



143 our model. Genome-wide significance  $p$ -value of  $5.0 \times 10^{-8}$  was used to define  
144 significant interactions.

145

146 To interpret the interaction signals identified by GEM, we used PLINK2 alpha-v2.3 to  
147 conduct exposure-stratified analysis to quantify SNP effects in each exposure group.

148 Lastly, to quantify the effects of FOS across the genotype groups, we fitted linear

149 models to each group and adjusted for the same covariates as in our single-variant  
150 interaction tests.

151

### 152 **Gene-level Interaction Analysis**

153 FUMA<sup>34</sup> was used to implement the MAGMA model<sup>35</sup>, which maps variants to genes

154 based on physical locations, aggregates  $p$ -values from the individual variant-FOS

155 interaction tests across genic regions, and tests gene-level associations with each of

156 the phenotypes of interest. Variants were mapped to 18,767 genes based on defined

157 transcription start and stop sites, and a  $p$ -value of  $2.66 \times 10^{-6}$  ( $0.05/18767$ ) was used to

158 define statistical significance. Linkage disequilibrium (LD) was estimated using the UK

159 Biobank release 2b 10k white British reference panel.

160

### 161 **Transcriptome-wide Interaction Analysis**

162 We used the MetaXcan framework for our TWIS to integrate eQTL information with

163 single-variant GWIS summary statistics. MetaXcan tools include S-PrediXcan<sup>36</sup> and S-

164 MultiXcan.<sup>37</sup> S-PrediXcan predicts and imputes genetically determined gene expression

165 levels and tests their associations with the phenotype of interest. We used the MASHR-

166 based models to predict gene expression. These models are based on fine-mapped  
167 variants for each tissue. They take in gene expression weights, the variance and  
168 covariances of SNPs, and the beta coefficient of each SNP from summary statistics. S-  
169 MultiXcan aggregates information across all tissues. After multiple testing correction for  
170 the number of genes that had a prediction model in at least one tissue, significance was  
171 defined as  $p < 2.9 \times 10^{-6}$  (0.05/17,500).

172

### 173 **Estimation of Phenotypic Variance Explained by Gene-FOS Interactions**

174 We performed GCTA-GREML<sup>38</sup> analysis to estimate the proportion of phenotypic  
175 variance explained by genome-wide gene-FOS interactions for each of the 14  
176 phenotypes separately. We estimated the genetic relationship matrix (GRM) between  
177 pairs of individuals using LD-pruned SNPs. SNPs were pruned using a window size of  
178 1000 variants, a step size of 100 variants, and an  $r^2$  of 0.9.

179

180 To estimate the variance explained by the top variant, we assumed gene-environment  
181 independence and applied the formula

$$182 \quad 2\beta_{G \times E}^2 f(1-f)p(1-p)$$

183 where  $\beta$  is the gene-FOS interaction effect size,  $f$  is the MAF, and  $p$  is the exposure  
184 prevalence in the population.

## 185 **Results**

### 186 **Sample characteristics**

187 NMR metabolite measurements for UK Biobank participants were released in two  
188 phases – Phase One ( $N = 120,000$ ) and Phase Two ( $N = 170,000$  additional samples).  
189 Phase Two release also included updated and corrected Phase One measurements  
190 (Methods). We refer to the additional 170,000 samples as Phase Two in this study. We  
191 performed exposure quality control on the combined dataset of 290,000 participants for  
192 our gene-FOS interaction analysis (Figure S1). Approximately 31.8% ( $N = 63,711$ ) of  
193 200,060 included participants indicated regular FOS use at recruitment (Table S1). The  
194 percentage of females and mean age in our dataset were 53.5% and  $56.8 \pm 8.0$ ,  
195 respectively.

196

### 197 **Variant-level analysis identified interacting SNPs in the *FADS* locus**

198 We performed single-variant 1-df interaction tests to examine the interactions between  
199 FOS and genetic variants in the Phase One and Phase Two datasets, separately. We  
200 identified one and two unique loci at  $p < 5.0 \times 10^{-8}$  in the Phase One and Two datasets,  
201 respectively (Tables S2 and S3, Figures S2, S3, and S4). The correlations between the  
202  $p$ -values from both analyses are shown in Figure S3, with reproducible association  
203 signals observed for total omega-3, omega-3%, the omega-6/omega-3 ratio, DHA, and  
204 DHA%. These reproducible signals, genome-wide significant in Phase Two and  
205 nominally significant in Phase One, locate in the *FADS1-FADS2* gene cluster, hereafter  
206 referred to as the *FADS* locus.

207

208 Next, we performed interaction tests in the combined dataset of Phase One and Two  
209 (Figure S5, Table S4). We identified genome-wide significant interaction effects for  
210 variants in the *FADS* locus, for five traits, including total omega-3, omega-3%, DHA,  
211 DHA%, and the omega-6/omega-3 ratio (Figures 1A and S5, Table 1). To report our  
212 significant results, we focused on omega-3% as we observed similar trends in the other  
213 four traits. Omega-3% encompasses all omega-3 PUFAs and reflects omega-3  
214 concentration in relation to total fatty acids. The most significant interaction was at the  
215 lead SNP rs35473591 (chr11:61586328; C>CT, MAF = 0.34) (Figure 1B). To quantify  
216 the genetic effect of rs35473591 in each exposure subgroup, we performed a stratified  
217 analysis (Figure 1C). The C allele had an overall positive effect on omega-3%, but its  
218 effect size was lower in the FOS-taking group ( $\beta_G = 0.35$ ) than in the group that does  
219 not use FOS ( $\beta_G = 0.42$ ). Furthermore, we fitted linear models to quantify the effect of  
220 FOS in each genotype subgroup. FOS significantly altered omega-3% levels. The  
221 degree of alteration varied across the three genotype groups (Figure 1D,  $\beta_E = 0.45$ ,  
222 0.50, 0.59 SD units, respectively, in C/C, C/CT, and CT/CT). Together, these results  
223 highlight a significant effect of interaction between rs35473591 and FOS on omega-3%,  
224 demonstrating that the effect of FOS on circulating omega-3% is modulated by  
225 rs35473591 genotype. Similar interaction effects were observed at the *FADS* locus for  
226 total omega-3, DHA, DHA%, and the omega-6/omega-3 ratio.

227

### 228 **Gene-level interactions with FOS**

229 To extend our single-variant tests, we first used MAGMA to aggregate interaction  $p$ -  
230 values across genic regions and performed gene-based interaction tests. The *FADS*

231 cluster interaction was significant in the same five traits as in the single-variant tests  
232 (Figure 2). Around this *FADS* locus, in addition to the *FADS1* and *FADS2* genes, the  
233 *FADS3*, *TMEM258*, *MYRF*, *FEN1*, and *RAB3IL1* genes were also significant across the  
234 same five traits (Figure 2A), but these signals may be driven by the same variants due  
235 to the high level of LD in this genomic region. Additionally, a novel locus around the  
236 *GPR12* gene was significant in total PUFAs% and the ratio of PUFAs to MUFAs (Figure  
237 2B). The top SNP in PUFAs%, rs1752653 (chr 13:27322777; T>C, MAF = 0.21),  
238 reached suggestive genome-wide significance at  $p < 5.0 \times 10^{-6}$  (Figure 3A). *GPR12*-  
239 rs1752653 had opposite directions of genetic effects on PUFAs% in the FOS and non-  
240 FOS-taking groups, with  $\beta_G = 0.03$  and  $-0.01$ , respectively (Figure 3B). Across the three  
241 genotype groups, the effect of FOS on PUFAs% is  $\beta_E = 0.24$ ,  $0.21$ , and  $0.16$  SD units,  
242 respectively, in T/T, T/C, and C/C (Figure 3C).

243  
244 Next, we integrated eQTL information with our GWIS summary statistics using S-  
245 PrediXcan and S-MultiXcan. We first performed S-PrediXcan analyses to identify genes  
246 whose genetically predicted expression levels interact significantly with FOS intake  
247 status in each phenotype. S-PrediXcan conducted single-tissue analysis in 49 tissues  
248 available in the GTEx consortium. We used S-MultiXcan to aggregate results across  
249 multiple tissues and to increase power relative to the individual tissue analyses. After  
250 multiple testing correction for the number of genes that had a prediction model in at  
251 least one tissue ( $0.05/17,500$ ;  $p < 2.9 \times 10^{-6}$ ), we identified 24 significant interactions  
252 involving seven genes across five unique traits (Table S5). The *FADS1*, *FADS2*,  
253 *FADS3*, *TMEM258*, *FEN1*, *BEST1*, and *FTH1* genes were all significant across the

254 same five traits as MAGMA gene-based analysis and our single-variant tests. The most  
255 significant interaction was for the *FADS1* gene ( $p = 8.8 \times 10^{-22}$ ) in omega-3%. The  
256 *FADS1* gene was also the only gene with interaction effects in all five phenotypes with  
257 significant interactions. In summary, two types of gene-based analyses consistently  
258 identified genes around the *FADS* locus to exhibit significant gene-FOS interaction  
259 signals for five PUFA traits. Gene-level analysis with MAGMA further identified the  
260 *GPR12* locus for total PUFAs% and the ratio of PUFAs to MUFAs.

261

## 262 **Contribution of gene-FOS interactions to the phenotypic variance of circulating** 263 **PUFA levels**

264 We conducted GCTA-GREML analysis to estimate the amount of phenotypic variance  
265 explained by genome-wide gene-FOS interactions. The total additive genetic influence  
266 (i.e., SNP heritability) across all 14 PUFA and MUFA traits ranged from 14.2% to 23.9%  
267 (s.e. 0.36% and 0.37%) in LA and MUFAs%, respectively (Figure 4, Table S6). The  
268 phenotypic variance explained by genome-wide gene-FOS interactions ranged from  
269 0.53% to 1.51% (s.e. 0.38% and 0.39%) in omega-6% to DHA%, respectively. These  
270 estimates were statistically significant in 10 out of 14 PUFA traits. The four traits without  
271 significant variance explained are total PUFAs, total MUFAs, MUFAs%, and omega-6%.  
272 We then estimated the contribution of the top SNP, rs35473591, to the variance  
273 explained by gene-FOS interactions in omega-3%. SNP rs35473591 explained a  
274 proportion of  $5.12 \times 10^{-4}$ , estimated to be 4.11% of the genome-wide gene-FOS  
275 interaction contributions to omega-3% variance. Gene-FOS interactions make small but  
276 non-negligible contributions to the phenotypic variance of plasma PUFA traits.

277

## 278 **Discussion**

279 In this study, we reported the most extensive GWIS of gene-FOS interactions in 14  
280 PUFAs and MUFAs-related traits. Our goal for this project was to leverage a large  
281 cohort of over 200,000 European individuals in the UK Biobank to identify genetic loci  
282 that modify the associations between FOS and circulating PUFA traits. We also  
283 estimated the contribution of genome-wide interactions with FOS to the phenotypic  
284 variance. Across 14 traits, we identified significant gene-FOS interactions for seven  
285 traits – five variant and gene-level interactions in omega-3 related traits and the omega-  
286 6/omega-3 ratio, and two additional gene-level interactions for PUFAs% and  
287 PUFAs/MUFAs ratio.

288

289 In both our single-variant and gene-level analyses, we replicated the *FADS1-FADS2*  
290 gene cluster identified in previous gene-dietary PUFAs interaction studies.<sup>12,39-41</sup> These  
291 studies investigated other *FADS* SNPs in high LD with our top SNP, rs35473591. These  
292 variants do not all have the same effect on PUFAs, so it is essential to investigate each  
293 SNP's effect independently in the different PUFAs.<sup>7</sup> From our results, the lead *FADS1*-  
294 rs35473591 SNP had different effect sizes on omega-3% in the exposure groups. The  
295 genetic influence of this SNP was much more substantial in the individuals who do not  
296 take fish oil. This shows that FOS lessened the *FADS1*-rs35473591 effect on omega-  
297 3%, evidence of interaction. We also saw an overall increase in omega-3-related traits  
298 and a reduction in the omega-6 to omega-3 ratio after supplementation, indicating that  
299 FOS increases circulating omega-3 levels, as previously established.<sup>4-6,42</sup> The ratio of

300 dietary omega-6 to omega-3 consumed has drastically shifted from ~5:1 to 10:1  
301 because of our modern Western diets, and this is reflected in the ratio of plasma  
302 omega-6 to omega-3.<sup>43</sup> It is crucial to regulate this ratio because this shift has been  
303 associated with various chronic diseases.<sup>8</sup>  
304  
305 Our results showed that FOS intake had the lowest effect on omega-3% levels in the  
306 C/C homozygote genotype group and had the highest effect in the CT/CT group. The  
307 degree of omega-3% alteration increased with each copy of the CT allele. This implies  
308 that individuals with the CT/CT and C/CT genotypes will benefit more from taking FOS  
309 in terms of increasing omega-3 PUFA levels and reducing their omega-6/omega-3 ratio.  
310 Individuals who are homozygous of the C major allele at *FADS1*-rs35473591 benefit  
311 less, suggesting they need higher doses of FOS to attain the same circulating omega-3  
312 levels as CT carriers. In summary, the *FADS1*-rs35473591 SNP, in the presence of  
313 FOS, has an increasing effect on omega-3-related traits, but the degree of this effect is  
314 genotype-dependent. We did not find any significant interaction for *FADS* variants in  
315 omega-6-related traits. Previous studies have implicated the *FADS* locus in interactions  
316 with PUFA supplementation.<sup>13</sup> A reasonable explanation is that our study focused on  
317 omega-3 PUFA supplementation (i.e., FOS), while Sergeant et al.<sup>13</sup> focused on  
318 supplementation of gamma-linolenic acid supplementation, which is an omega-6, 18-  
319 carbon PUFA.  
320  
321 Taking only genetic main or marginal effects into account does not give a complete  
322 picture of genetic impacts on circulating PUFAs. Accounting for relevant gene-



323 environment interactions revealed patterns that would not be observed in a typical  
324 genome-wide association study. Furthermore, revealing gene-environment interactions  
325 is needed to estimate how much phenotypic variance is explained by such interactions.  
326 This estimation gives a better understanding of complex traits and diseases because  
327 they are influenced by a combination of genetic makeup and environmental exposures,  
328 and the effects of some genes are environment-dependent. It also helps to explain  
329 some of the ‘missing heritability’ in traits. From our results, additive genetic factors alone  
330 explain a maximum of 22.5% of the phenotypic variance of omega-3-related plasma  
331 levels, while gene-FOS interactions explain a maximum of 1.51%. The contributions of  
332 gene-FOS interactions to omega-3 trait variance are small but non-negligible.

333

334 Our gene-based analysis revealed the G protein-coupled receptor 12 (*GPR12*) gene as  
335 an interacting locus for PUFAs% and the PUFAs to MUFAs ratio. This gene is highly  
336 expressed in the central nervous system and encodes the constitutively active G  
337 protein-coupled receptor 12 that promotes cyclic AMP production.<sup>44</sup> GPR12 is an  
338 orphan receptor, meaning it is unconfirmed what endogenous ligand it binds to.<sup>44</sup>  
339 Regarding PUFAs, it is unclear how the GPR12 receptor is associated with them.  
340 However, the GPR12 receptor is phylogenetically related to cannabinoid receptors,  
341 which bind to certain endocannabinoids, including omega-6-derived  
342 endocannabinoids.<sup>45,46</sup> Recent evidence shows that omega-3-derived  
343 endocannabinoids also exist.<sup>45,46</sup> Future research to experimentally establish a  
344 connection between PUFAs-derived endocannabinoids and the GPR12 receptor will  
345 support our findings.

346

347 A significant strength of our study is the large sample with complete dietary, genomic,  
348 and NMR PUFA information. We also performed our analyses at both the variant and  
349 gene levels and estimated the contributions of genome-wide gene-FOS interactions to  
350 the phenotypic variance of circulating PUFA traits, providing the most extensive analysis  
351 of gene-FOS interactions. However, our study has several limitations. Firstly, we  
352 restricted this study to European-ancestry participants and did not have large enough  
353 datasets to replicate these results in other populations. Large enough datasets with the  
354 necessary exposure, genomic, and phenotypic information to detect interactions are still  
355 uncommon. Secondly, for FOS information, we relied on only one dietary questionnaire  
356 administered to participants at one time point. This questionnaire did not give estimates  
357 of the frequency of FOS intake, such as daily or weekly. It also did not provide  
358 information on the types and compositions of FOS. Hence, we could not account for  
359 dosage heterogeneity in our model. Thirdly, other dietary sources of omega-6 and  
360 omega-3 PUFAs, such as vegetable oils and fatty fish, can alter circulating PUFA  
361 levels.<sup>5,6,42</sup> Furthermore, FOS status is correlated with other lifestyle and socioeconomic  
362 factors.<sup>47</sup> There is a possibility that the significant interactions we observed in our  
363 results were instead driven by other exposures that we did not explore in this study.  
364 However, our study had enough statistical power and was rigorous enough to replicate  
365 the *FADS* locus, giving credibility to our findings.

366

367 **Conclusion**

368 Our study revealed a novel locus that significantly alters the effect of FOS on PUFAs-  
369 related traits. Taking genetic information into account when making nutritional  
370 recommendations is the hallmark of precision nutrition, which aims to move away from a  
371 one-size-fits-all dietary recommendation model. Variants that influence the effects of  
372 dietary PUFAs on plasma PUFAs will help inform diet-based disease prevention and  
373 treatment strategies. Additionally, accounting for gene-FOS interactions will aid in  
374 developing more accurate polygenic scores for PUFAs-related traits or PUFAs-  
375 associated diseases. Lastly, our study also brings to light a potentially unexplored  
376 association between the GPR12 gene and PUFAs. A future research direction to  
377 experimentally validate this association may highlight PUFA supplementation as a  
378 potential treatment for GPR12-related diseases, such as schizophrenia.<sup>48</sup>

379

380 **Description of Supplemental Information**

381 Supplemental information includes five figures and six tables.

382 **Declaration of Competing Interests**

383 The authors declare no conflict of interest.

384 **Acknowledgments**

385 We would like to acknowledge and express gratitude to the UK Biobank participants and  
386 administrative staff. Research reported in this publication was supported by the National  
387 Institute of General Medical Sciences of the National Institute of Health under the award  
388 number R35GM143060 (KY). The content is solely the authors' responsibility and does  
389 not necessarily represent the official views of the National Institutes of Health.

390 **Data and Code Availability**

391 Data processed in this study was made available through the UK Biobank and accessed  
392 via an approved application. Data are not publicly available and can be accessed by  
393 applying through <https://www.ukbiobank.ac.uk/enable-your-research/register>. Summary  
394 statistics will be available in the GWAS Catalog (<https://www.ebi.ac.uk/gwas/>) after  
395 publication. Scripts used to process the data, perform analysis, and interpret results are  
396 available on GitHub (<https://github.com/adannasusan/PUFA-GxE>).

397

## 398 References

- 399 1. Lemaitre, R.N., Tanaka, T., Tang, W., Manichaikul, A., Foy, M., Kabagambe, E.K.,  
400 Nettleton, J.A., King, I.B., Weng, L.C., Bhattacharya, S., et al. (2011). Genetic loci  
401 associated with plasma phospholipid n-3 fatty acids: a meta-analysis of genome-  
402 wide association studies from the CHARGE Consortium. *PLoS Genet* 7,  
403 e1002193. [10.1371/journal.pgen.1002193](https://doi.org/10.1371/journal.pgen.1002193).
- 404 2. Guan, W., Steffen, B.T., Lemaitre, R.N., Wu, J.H.Y., Tanaka, T., Manichaikul, A.,  
405 Foy, M., Rich, S.S., Wang, L., Nettleton, J.A., et al. (2014). Genome-wide  
406 association study of plasma N6 polyunsaturated fatty acids within the cohorts for  
407 heart and aging research in genomic epidemiology consortium. *Circ Cardiovasc*  
408 *Genet* 7, 321-331. [10.1161/CIRCGENETICS.113.000208](https://doi.org/10.1161/CIRCGENETICS.113.000208).
- 409 3. Tintle, N.L., Pottala, J.V., Lacey, S., Ramachandran, V., Westra, J., Rogers, A.,  
410 Clark, J., Olthoff, B., Larson, M., Harris, W., and Shearer, G.C. (2015). A genome-  
411 wide association study of saturated, mono- and polyunsaturated red blood cell  
412 fatty acids in the Framingham Heart Offspring Study. *Prostaglandins Leukot*  
413 *Essent Fatty Acids* 94, 65-72. [10.1016/j.plefa.2014.11.007](https://doi.org/10.1016/j.plefa.2014.11.007).
- 414 4. Schuchardt, J.P., Ostermann, A.I., Stork, L., Kutzner, L., Kohrs, H., Greupner, T.,  
415 Hahn, A., and Schebb, N.H. (2016). Effects of docosahexaenoic acid  
416 supplementation on PUFA levels in red blood cells and plasma. *Prostaglandins*  
417 *Leukot Essent Fatty Acids* 115, 12-23. [10.1016/j.plefa.2016.10.005](https://doi.org/10.1016/j.plefa.2016.10.005).
- 418 5. Hodge, A.M., Simpson, J.A., Gibson, R.A., Sinclair, A.J., Makrides, M., O'Dea, K.,  
419 English, D.R., and Giles, G.G. (2007). Plasma phospholipid fatty acid  
420 composition as a biomarker of habitual dietary fat intake in an ethnically diverse  
421 cohort. *Nutr Metab Cardiovasc Dis* 17, 415-426. [10.1016/j.numecd.2006.04.005](https://doi.org/10.1016/j.numecd.2006.04.005).
- 422 6. Huybrechts, I., Jacobs, I., Aglago, E.K., Yammine, S., Matta, M., Schmidt, J.A.,  
423 Casagrande, C., Nicolas, G., Biessy, C., Van Puyvelde, H., et al. (2023).  
424 Associations between Fatty Acid Intakes and Plasma Phospholipid Fatty Acid  
425 Concentrations in the European Prospective Investigation into Cancer and  
426 Nutrition. *Nutrients* 15. [10.3390/nu15173695](https://doi.org/10.3390/nu15173695).
- 427 7. Chilton, F.H., Murphy, R.C., Wilson, B.A., Sergeant, S., Ainsworth, H., Seeds,  
428 M.C., and Mathias, R.A. (2014). Diet-gene interactions and PUFA metabolism: a  
429 potential contributor to health disparities and human diseases. *Nutrients* 6, 1993-  
430 2022. [10.3390/nu6051993](https://doi.org/10.3390/nu6051993).
- 431 8. Chilton, F.H., Dutta, R., Reynolds, L.M., Sergeant, S., Mathias, R.A., and Seeds,  
432 M.C. (2017). Precision Nutrition and Omega-3 Polyunsaturated Fatty Acids: A  
433 Case for Personalized Supplementation Approaches for the Prevention and  
434 Management of Human Diseases. *Nutrients* 9. [10.3390/nu9111165](https://doi.org/10.3390/nu9111165).
- 435 9. Tapiero, H., Ba, G.N., Couvreur, P., and Tew, K.D. (2002). Polyunsaturated fatty  
436 acids (PUFA) and eicosanoids in human health and pathologies. *Biomed*  
437 *Pharmacother* 56, 215-222. [10.1016/s0753-3322\(02\)00193-2](https://doi.org/10.1016/s0753-3322(02)00193-2).
- 438 10. Saravanan, P., Davidson, N.C., Schmidt, E.B., and Calder, P.C. (2010).  
439 Cardiovascular effects of marine omega-3 fatty acids. *Lancet* 376, 540-550.  
440 [10.1016/S0140-6736\(10\)60445-X](https://doi.org/10.1016/S0140-6736(10)60445-X).
- 441 11. Harris, W.S., Pottala, J.V., Sands, S.A., and Jones, P.G. (2007). Comparison of  
442 the effects of fish and fish-oil capsules on the n 3 fatty acid content of blood cells

- 443 and plasma phospholipids. *Am J Clin Nutr* 86, 1621-1625.  
444 10.1093/ajcn/86.5.1621.
- 445 12. Juan, J., Huang, H., Jiang, X., Ardisson Korat, A.V., Song, M., Sun, Q., Willett,  
446 W.C., Jensen, M.K., and Kraft, P. (2018). Joint effects of fatty acid desaturase 1  
447 polymorphisms and dietary polyunsaturated fatty acid intake on circulating fatty  
448 acid proportions. *Am J Clin Nutr* 107, 826-833. 10.1093/ajcn/nqy025.
- 449 13. Sergeant, S., Hallmark, B., Mathias, R.A., Mustin, T.L., Ivester, P., Bohannon,  
450 M.L., Ruczinski, I., Johnstone, L., Seeds, M.C., and Chilton, F.H. (2020).  
451 Prospective clinical trial examining the impact of genetic variation in FADS1 on  
452 the metabolism of linoleic acid- and  $\alpha$ -linolenic acid-containing botanical oils. *Am*  
453 *J Clin Nutr* 111, 1068-1078. 10.1093/ajcn/nqaa023.
- 454 14. Saleh, R.N.M., West, A.L., Ostermann, A.I., Schebb, N.H., Calder, P.C., and  
455 Minihane, A.M. (2021). APOE Genotype Modifies the Plasma Oxylipin Response  
456 to Omega-3 Polyunsaturated Fatty Acid Supplementation in Healthy Individuals.  
457 *Front Nutr* 8, 723813. 10.3389/fnut.2021.723813.
- 458 15. Tomaszewski, N., He, X., Solomon, V., Lee, M., Mack, W.J., Quinn, J.F., Braskie,  
459 M.N., and Yassine, H.N. (2020). Effect of APOE Genotype on Plasma  
460 Docosahexaenoic Acid (DHA), Eicosapentaenoic Acid, Arachidonic Acid, and  
461 Hippocampal Volume in the Alzheimer's Disease Cooperative Study-Sponsored  
462 DHA Clinical Trial. *J Alzheimers Dis* 74, 975-990. 10.3233/JAD-191017.
- 463 16. Yassine, H.N., Rawat, V., Mack, W.J., Quinn, J.F., Yurko-Mauro, K., Bailey-Hall,  
464 E., Aisen, P.S., Chui, H.C., and Schneider, L.S. (2016). The effect of APOE  
465 genotype on the delivery of DHA to cerebrospinal fluid in Alzheimer's disease.  
466 *Alzheimers Res Ther* 8, 25. 10.1186/s13195-016-0194-x.
- 467 17. Stephensen, C.B., Armstrong, P., Newman, J.W., Pedersen, T.L., Legault, J.,  
468 Schuster, G.U., Kelley, D., Vikman, S., Hartiala, J., Nassir, R., et al. (2011).  
469 ALOX5 gene variants affect eicosanoid production and response to fish oil  
470 supplementation. *J Lipid Res* 52, 991-1003. 10.1194/jlr.P012864.
- 471 18. Armstrong, P., Kelley, D.S., Newman, J.W., Staggars, F.E., Sr., Hartiala, J.,  
472 Allayee, H., and Stephensen, C.B. (2012). Arachidonate 5-lipoxygenase gene  
473 variants affect response to fish oil supplementation by healthy African Americans.  
474 *J Nutr* 142, 1417-1428. 10.3945/jn.112.159814.
- 475 19. Veenstra, J., Kalsbeek, A., Westra, J., Disselkoen, C., Smith, C., and Tintle, N.  
476 (2017). Genome-Wide Interaction Study of Omega-3 PUFAs and Other Fatty  
477 Acids on Inflammatory Biomarkers of Cardiovascular Health in the Framingham  
478 Heart Study. *Nutrients* 9. 10.3390/nu9080900.
- 479 20. Ralston, J.C., Matravadia, S., Gaudio, N., Holloway, G.P., and Mutch, D.M.  
480 (2015). Polyunsaturated fatty acid regulation of adipocyte FADS1 and FADS2  
481 expression and function. *Obesity (Silver Spring)* 23, 725-728.  
482 10.1002/oby.21035.
- 483 21. Merino, D.M., Ma, D.W., and Mutch, D.M. (2010). Genetic variation in lipid  
484 desaturases and its impact on the development of human disease. *Lipids Health*  
485 *Dis* 9, 63. 10.1186/1476-511X-9-63.
- 486 22. Madden, J., Williams, C.M., Calder, P.C., Lietz, G., Miles, E.A., Cordell, H.,  
487 Mathers, J.C., and Minihane, A.M. (2011). The impact of common gene variants  
488 on the response of biomarkers of cardiovascular disease (CVD) risk to increased



- 489 fish oil fatty acids intakes. *Annu Rev Nutr* 31, 203-234. 10.1146/annurev-nutr-  
490 010411-095239.
- 491 23. Schulze, M.B., Minihane, A.M., Saleh, R.N.M., and Riserus, U. (2020). Intake and  
492 metabolism of omega-3 and omega-6 polyunsaturated fatty acids: nutritional  
493 implications for cardiometabolic diseases. *Lancet Diabetes Endocrinol* 8, 915-  
494 930. 10.1016/S2213-8587(20)30148-0.
- 495 24. Huang, L., Zhang, F., Xu, P., Zhou, Y., Liu, Y., Zhang, H., Tan, X., Ge, X., Xu, Y.,  
496 Guo, M., and Long, Y. (2023). Effect of Omega-3 Polyunsaturated Fatty Acids on  
497 Cardiovascular Outcomes in Patients with Diabetes: A Meta-analysis of  
498 Randomized Controlled Trials. *Adv Nutr* 14, 629-636.  
499 10.1016/j.advnut.2023.04.009.
- 500 25. Wu, S., Ding, Y., Wu, F., Li, R., Hou, J., and Mao, P. (2015). Omega-3 fatty acids  
501 intake and risks of dementia and Alzheimer's disease: a meta-analysis. *Neurosci*  
502 *Biobehav Rev* 48, 1-9. 10.1016/j.neubiorev.2014.11.008.
- 503 26. Kavyani, Z., Musazadeh, V., Fathi, S., Hossein Faghfour, A., Dehghan, P., and  
504 Sarmadi, B. (2022). Efficacy of the omega-3 fatty acids supplementation on  
505 inflammatory biomarkers: An umbrella meta-analysis. *Int Immunopharmacol* 111,  
506 109104. 10.1016/j.intimp.2022.109104.
- 507 27. Wei, L., Wu, Z., and Chen, Y.Q. (2022). Multi-targeted therapy of cancer by  
508 omega-3 fatty acids-an update. *Cancer Lett* 526, 193-204.  
509 10.1016/j.canlet.2021.11.023.
- 510 28. Francis, M., Li, C., Sun, Y., Zhou, J., Li, X., Brenna, J.T., and Ye, K. (2021).  
511 Genome-wide association study of fish oil supplementation on lipid traits in  
512 81,246 individuals reveals new gene-diet interaction loci. *PLoS Genet* 17,  
513 e1009431. 10.1371/journal.pgen.1009431.
- 514 29. Bycroft, C., Freeman, C., Petkova, D., Band, G., Elliott, L.T., Sharp, K., Motyer,  
515 A., Vukcevic, D., Delaneau, O., O'Connell, J., et al. (2018). The UK Biobank  
516 resource with deep phenotyping and genomic data. *Nature* 562, 203-209.  
517 10.1038/s41586-018-0579-z.
- 518 30. Sudlow, C., Gallacher, J., Allen, N., Beral, V., Burton, P., Danesh, J., Downey, P.,  
519 Elliott, P., Green, J., Landray, M., et al. (2015). UK biobank: an open access  
520 resource for identifying the causes of a wide range of complex diseases of  
521 middle and old age. *PLoS Med* 12, e1001779. 10.1371/journal.pmed.1001779.
- 522 31. Karczewski, K.J., Gupta, R., Kanai, M., Lu, W., Tsuo, K., Wang, Y., Walters, R.K.,  
523 Turley, P., Callier, S., Shah, N.N., et al. (2024). Pan-UK Biobank GWAS improves  
524 discovery, analysis of genetic architecture, and resolution into ancestry-enriched  
525 effects. medRxiv, 2024.2003.2013.24303864. 10.1101/2024.03.13.24303864.
- 526 32. Chang, C.C., Chow, C.C., Tellier, L.C., Vattikuti, S., Purcell, S.M., and Lee, J.J.  
527 (2015). Second-generation PLINK: rising to the challenge of larger and richer  
528 datasets. *Gigascience* 4, 7. 10.1186/s13742-015-0047-8.
- 529 33. Westerman, K.E., Pham, D.T., Hong, L., Chen, Y., Sevilla-Gonzalez, M., Sung,  
530 Y.J., Sun, Y.V., Morrison, A.C., Chen, H., and Manning, A.K. (2021). GEM:  
531 scalable and flexible gene-environment interaction analysis in millions of  
532 samples. *Bioinformatics* 37, 3514-3520. 10.1093/bioinformatics/btab223.

- 533 34. Watanabe, K., Taskesen, E., van Bochoven, A., and Posthuma, D. (2017).  
534 Functional mapping and annotation of genetic associations with FUMA. *Nat*  
535 *Commun* 8, 1826. [10.1038/s41467-017-01261-5](https://doi.org/10.1038/s41467-017-01261-5).
- 536 35. de Leeuw, C.A., Mooij, J.M., Heskes, T., and Posthuma, D. (2015). MAGMA:  
537 generalized gene-set analysis of GWAS data. *PLoS Comput Biol* 11, e1004219.  
538 [10.1371/journal.pcbi.1004219](https://doi.org/10.1371/journal.pcbi.1004219).
- 539 36. Barbeira, A.N., Dickinson, S.P., Bonazzola, R., Zheng, J., Wheeler, H.E., Torres,  
540 J.M., Torstenson, E.S., Shah, K.P., Garcia, T., Edwards, T.L., et al. (2018).  
541 Exploring the phenotypic consequences of tissue specific gene expression  
542 variation inferred from GWAS summary statistics. *Nat Commun* 9, 1825.  
543 [10.1038/s41467-018-03621-1](https://doi.org/10.1038/s41467-018-03621-1).
- 544 37. Barbeira, A.N., Pividori, M., Zheng, J., Wheeler, H.E., Nicolae, D.L., and Im, H.K.  
545 (2019). Integrating predicted transcriptome from multiple tissues improves  
546 association detection. *PLoS Genet* 15, e1007889.  
547 [10.1371/journal.pgen.1007889](https://doi.org/10.1371/journal.pgen.1007889).
- 548 38. Yang, J., Benyamin, B., McEvoy, B.P., Gordon, S., Henders, A.K., Nyholt, D.R.,  
549 Madden, P.A., Heath, A.C., Martin, N.G., Montgomery, G.W., et al. (2010).  
550 Common SNPs explain a large proportion of the heritability for human height. *Nat*  
551 *Genet* 42, 565-569. [10.1038/ng.608](https://doi.org/10.1038/ng.608).
- 552 39. Takkunen, M.J., de Mello, V.D., Schwab, U.S., Kuusisto, J., Vaittinen, M., Agren,  
553 J.J., Laakso, M., Pihlajamaki, J., and Uusitupa, M.I. (2016). Gene-diet interaction  
554 of a common FADS1 variant with marine polyunsaturated fatty acids for fatty acid  
555 composition in plasma and erythrocytes among men. *Mol Nutr Food Res* 60,  
556 381-389. [10.1002/mnfr.201500594](https://doi.org/10.1002/mnfr.201500594).
- 557 40. Roke, K., and Mutch, D.M. (2014). The role of FADS1/2 polymorphisms on  
558 cardiometabolic markers and fatty acid profiles in young adults consuming fish oil  
559 supplements. *Nutrients* 6, 2290-2304. [10.3390/nu6062290](https://doi.org/10.3390/nu6062290).
- 560 41. Al-Hilal, M., Alsaleh, A., Maniou, Z., Lewis, F.J., Hall, W.L., Sanders, T.A., O'Dell,  
561 S.D., and team, M.S. (2013). Genetic variation at the FADS1-FADS2 gene locus  
562 influences delta-5 desaturase activity and LC-PUFA proportions after fish oil  
563 supplement. *J Lipid Res* 54, 542-551. [10.1194/jlr.P032276](https://doi.org/10.1194/jlr.P032276).
- 564 42. Ma, J., Folsom, A.R., Shahar, E., and Eckfeldt, J.H. (1995). Plasma fatty acid  
565 composition as an indicator of habitual dietary fat intake in middle-aged adults.  
566 The Atherosclerosis Risk in Communities (ARIC) Study Investigators. *Am J Clin*  
567 *Nutr* 62, 564-571. [10.1093/ajcn/62.3.564](https://doi.org/10.1093/ajcn/62.3.564).
- 568 43. Blasbalg, T.L., Hibbeln, J.R., Ramsden, C.E., Majchrzak, S.F., and Rawlings,  
569 R.R. (2011). Changes in consumption of omega-3 and omega-6 fatty acids in the  
570 United States during the 20th century. *Am J Clin Nutr* 93, 950-962.  
571 [10.3945/ajcn.110.006643](https://doi.org/10.3945/ajcn.110.006643).
- 572 44. Brown, K.J., Laun, A.S., and Song, Z.H. (2017). Cannabidiol, a novel inverse  
573 agonist for GPR12. *Biochem Biophys Res Commun* 493, 451-454.  
574 [10.1016/j.bbrc.2017.09.001](https://doi.org/10.1016/j.bbrc.2017.09.001).
- 575 45. Laun, A.S., Shrader, S.H., Brown, K.J., and Song, Z.H. (2019). GPR3, GPR6,  
576 and GPR12 as novel molecular targets: their biological functions and interaction  
577 with cannabidiol. *Acta Pharmacol Sin* 40, 300-308. [10.1038/s41401-018-0031-9](https://doi.org/10.1038/s41401-018-0031-9).



- 578 46. Cascio, M.G. (2013). PUFA-derived endocannabinoids: an overview. *Proc Nutr*  
579 *Soc* 72, 451-459. [10.1017/S0029665113003418](https://doi.org/10.1017/S0029665113003418).
- 580 47. Cundiff, D.K., Lanou, A.J., and Nigg, C.R. (2007). Relation of omega-3 Fatty Acid  
581 intake to other dietary factors known to reduce coronary heart disease risk. *Am J*  
582 *Cardiol* 99, 1230-1233. [10.1016/j.amjcard.2006.12.032](https://doi.org/10.1016/j.amjcard.2006.12.032).
- 583 48. Lu, Y., Hatzipantelis, C.J., Langmead, C.J., and Stewart, G.D. (2023). Molecular  
584 insights into orphan G protein-coupled receptors relevant to schizophrenia. *Br J*  
585 *Pharmacol.* [10.1111/bph.16221](https://doi.org/10.1111/bph.16221).  
586

## 587 **Figure titles and legends**

588 **Figure 1.** *FADS* variants with significant interaction signals ( $p < 5.0 \times 10^{-8}$ ) in five PUFA  
589 traits. A) Circular Manhattan plots of  $p$ -values for gene-FOS interactions on omega-3,  
590 omega-3%, DHA, DHA%, and the ratio of omega-6 to omega-3. B) LocusZoom plot of  
591 the *FADS* locus for omega-3%. C) Marginal genetic effect of rs35473591 on omega-3%  
592 in stratified exposure subgroups. D) Marginal exposure effects of FOS on omega-3% in  
593 stratified genotype subgroups. All error bars represent 95% confidence intervals.

594 **Figure 2.** Significant gene-level interactions for Omega-3% and PUFAs%. Gene-level  
595 Manhattan plots from MAGMA analysis for genes that reached the significance  
596 threshold of  $p < 2.66 \times 10^{-6}$  in A) Omega-3% and B) PUFAs%, C) Marginal genetic  
597 effect of rs1752653 on PUFAs% in stratified exposure subgroups. Error bars show 95%  
598 confidence intervals. D) Marginal exposure effects of FOS on PUFAs% in stratified  
599 genotype subgroups. Error bars represent 95% confidence intervals.

600 **Figure 3.** *GPR12* variant with suggestive genome-wide significance ( $p < 5.0 \times 10^{-6}$ ) in  
601 PUFAs%. A) LocusZoom plot of the *GPR12* locus for PUFAs%. B) Marginal genetic  
602 effect of rs1752653 on PUFAs% in stratified exposure subgroups. C) Marginal exposure  
603 effects of FOS on PUFAs% in stratified genotype subgroups. All error bars represent  
604 95% confidence intervals.

605 **Figure 4.** The proportion of phenotypic variance explained by genome-wide gene-FOS  
606 interactions in the combined dataset.

607 **Supplementary Figures**

608 **Figure S1.** Participant flowchart.

609 **Figure S2.** Manhattan and QQ plots of p-values for gene-FOS interactions in 14 PUFAs  
610 and MUFAs-related phenotypes for 85,708 participants in the Phase One dataset.

611 **Figure S3.** Scatter plots of *p*-values, across the genome, of gene-FOS interactions  
612 across 14 PUFAs and MUFAs-related phenotypes in the Phases One and Two  
613 datasets.

614 **Figure S4.** Manhattan and QQ plots of p-values for gene-fish oil interactions in 14  
615 PUFAs and MUFAs-related phenotypes for 114,352 participants in the Phase Two  
616 dataset.

617 **Figure S5.** Manhattan and QQ plots of p-values for gene-fish oil interactions in 14  
618 PUFAs and MUFAs-related phenotypes for 200,060 participants in the combined  
619 dataset.

620 **Supplementary Tables**

621 **Table S1.** Baseline characteristics of participants in Phase One, Phase Two, and  
622 combined releases of NMR metabolite data of individuals of European ancestry in UK  
623 Biobank

624 **Table S2.** GWIS summary statistics of significant and suggestive gene-FOS interactions  
625 in 14 PUFAs and MUFAs-related phenotypes for 85,708 participants in the Phase One  
626 dataset

627 **Table S3.** GWIS summary statistics of significant and suggestive gene-FOS interactions  
628 in 14 PUFAs and MUFAs-related phenotypes for 114,352 participants in the Phase Two  
629 dataset

630 **Table S4.** GWIS summary statistics of significant and suggestive gene-FOS interactions  
631 in 14 PUFAs and MUFAs-related phenotypes for 200,060 participants in the combined  
632 dataset

633 **Table S5.** S-MultiXcan summary of gene-tissue associations

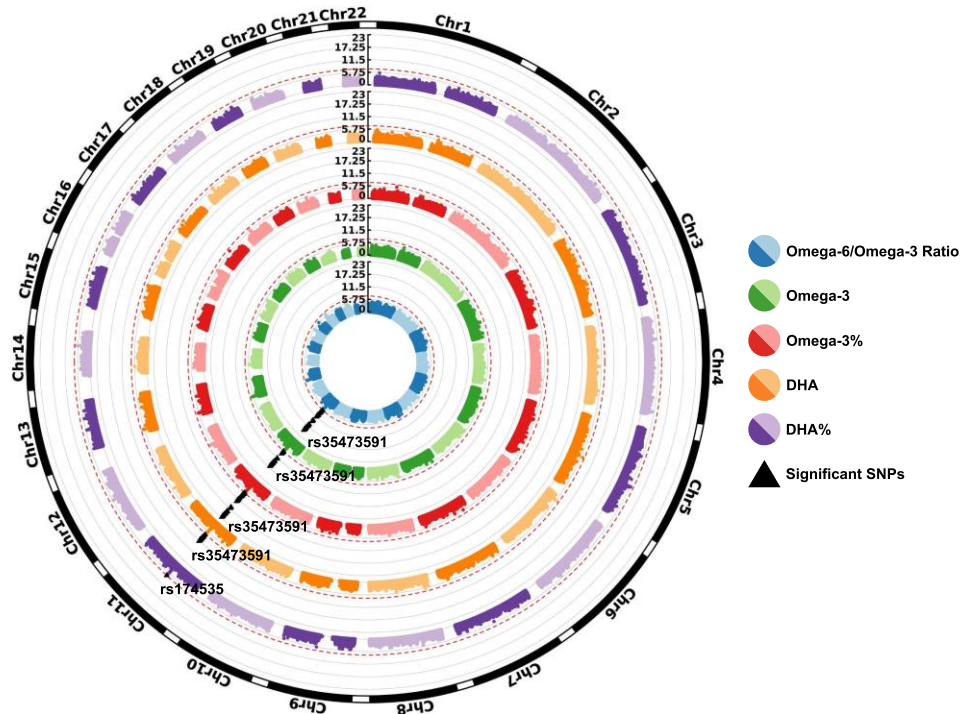
634 **Table S6.** Estimates of SNP-based heritability and phenotypic variance explained by  
635 gene-FOS interactions

Table 1. Lead SNPs in traits with genome-wide significant interaction signals. All significant variants are in the *FADS1-FADS2* gene cluster.

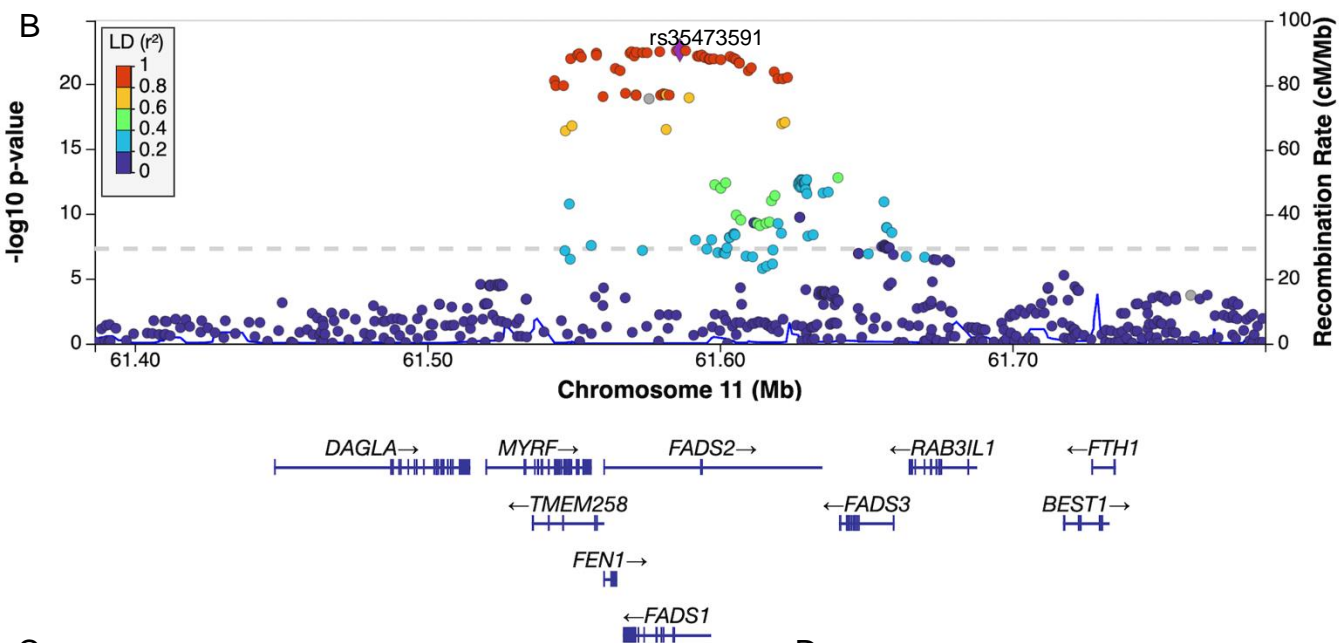
rsID	Chr	Pos	Nearest gene	EA (frequency)	NEA	PUFA trait	Interaction <i>p</i> -value	Interaction Beta	Interaction S.E.
rs35473591	11	61586328	<i>FADS1- FADS2</i>	C (0.66)	CT	Omega-3%	$2.50 \times 10^{-23}$	-0.0722	0.00726
						Omega-6 to Omega-3 ratio	$1.09 \times 10^{-20}$	0.0672	0.00720
						Omega-3	$2.74 \times 10^{-17}$	-0.0595	0.00704
						DHA	$1.56 \times 10^{-12}$	-0.0492	0.00696
rs174535	11	61551356	<i>MYRF</i>	T (0.65)	C	DHA%	$4.11 \times 10^{-8}$	-0.0390	0.00718

EA, effect allele; NEA, non-effect allele; S.E., standard error

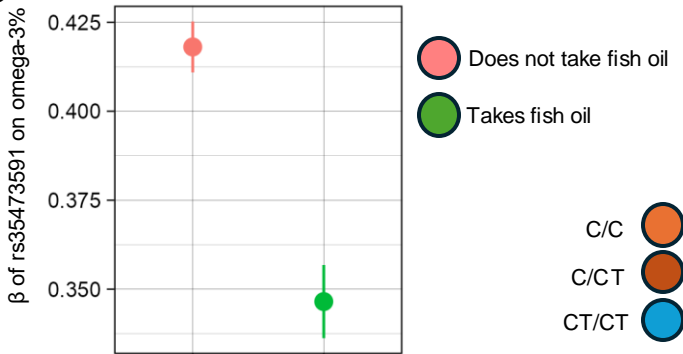
A



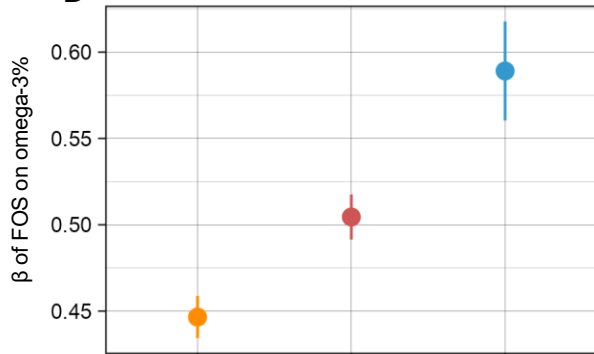
B

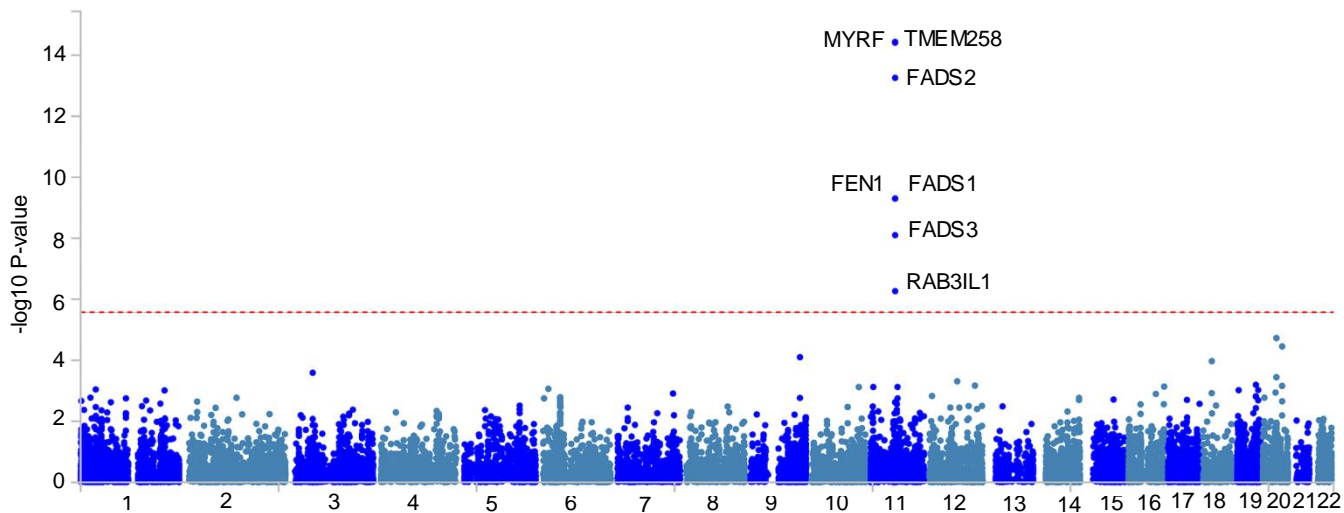
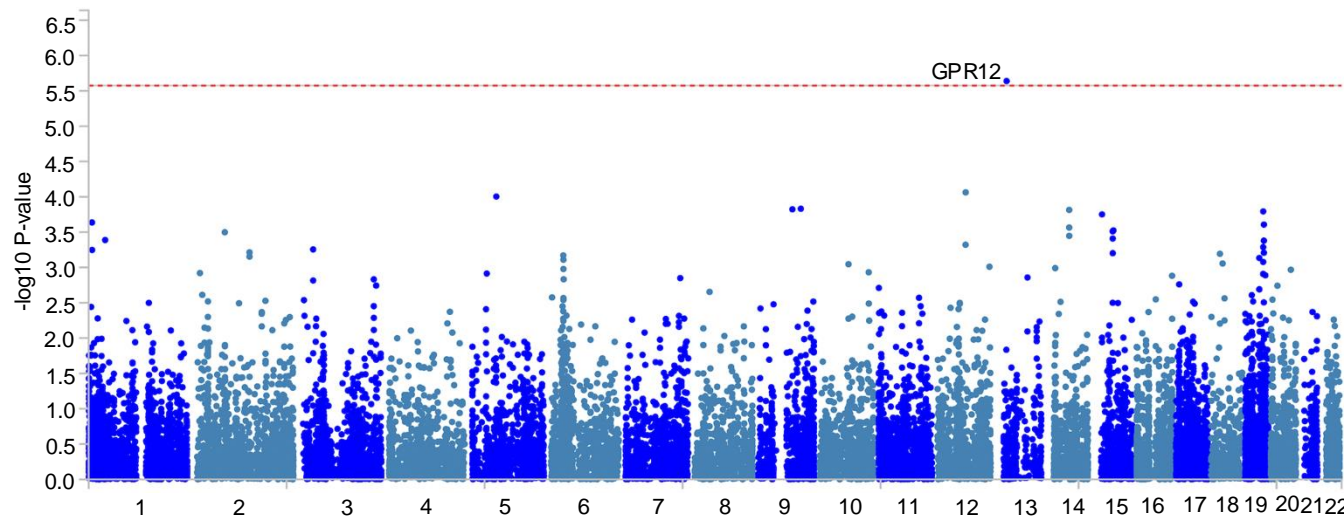


C

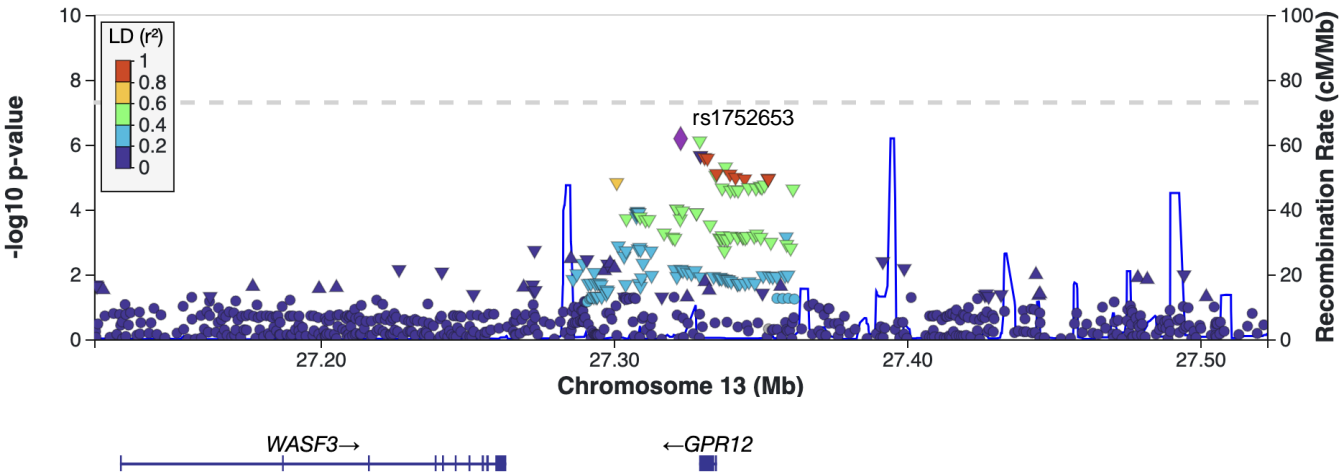


D

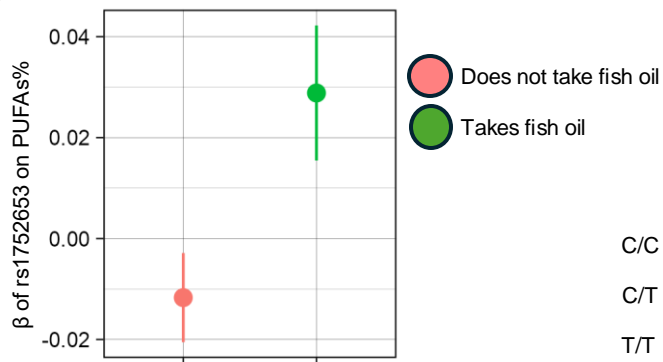


**A****B**

A



B



C

