

1 **Sex-specific Risk Factors for Survival in B-cell Non-Hodgkin Lymphoma Patients after Anti-CD19**  
2 **CAR T-Cell Therapy**

3

4 Manishkumar S. Patel<sup>1</sup>, Agrima Mian<sup>2</sup>, Akansha Jalota<sup>1</sup>, Peter Bazeley<sup>3</sup>, Sujata Patil<sup>3,4</sup>, Brian T. Hill<sup>2</sup>, and  
5 Neetu Gupta<sup>1</sup>

6

7 <sup>1</sup>Department of Inflammation and Immunity, Lerner Research Institute; <sup>2</sup>Department of Hematology and  
8 Medical Oncology, Taussig Cancer Institute; <sup>3</sup>Department of Quantitative Health Sciences, Lerner  
9 Research Institute; <sup>4</sup>Department of Cancer Biostatistics, Taussig Cancer Institute, Cleveland Clinic,  
10 Cleveland, OH

11

12 **Correspondence to:** Neetu Gupta, Ph.D.; 9500 Euclid Avenue, NE40, Cleveland, OH 44195; Email:  
13 [guptan@ccf.org](mailto:guptan@ccf.org); Phone: (216) 444-7455; Fax: (216) 444-9329

14

15 **Running Title:** Sex-specific risk factors in CAR T-cell therapy

16 **Keywords:** CAR T-cells, lymphoma, survival, biological sex

17

18

19 **Abstract**

20 Sex bias is well documented in autoimmune diseases, cancer and immune responses to infectious agents.  
21 Here, we investigated if pre-treatment risk factors that influence the survival of B-cell non-Hodgkin  
22 lymphoma (NHL) patients after anti-CD19 CAR T-cell therapy are sexually dimorphic. We measured  
23 pre-leukapheresis tumor burden (lactate dehydrogenase levels), C-reactive protein (CRP) and serum  
24 cytokine and chemokine concentration in 67 B-cell NHL patients treated with axicabtagene ciloleucel  
25 (axi-cel) or tisagenlecleucel (tisa-cel). Association of relative abundance of each factor with progression-  
26 free survival (PFS) and overall survival (OS) was analyzed in male and female patients together, or only  
27 within the male cohort or only within the female cohort. No differences in PFS or OS or in pre-treatment  
28 tumor burden, CRP and cytokine/chemokine levels were observed between male and female patients  
29 undergoing axi-cel or tisa-cel therapy. However, within the male group, patients with higher pre-treatment  
30 tumor burden and greater relative abundance of CRP and pro-inflammatory cytokines and chemokines  
31 conferred greater risk of poor progression-free survival (PFS) and/or overall survival (OS). In contrast,  
32 within the female group, patient survival was largely agnostic to variations in tumor burden, CRP and  
33 cytokine/chemokine abundance. Specifically, higher relative abundance of IL-6, IL-8, IL-27, TNF- $\alpha$ ,  
34 Eotaxin-1, MIP-1 $\beta$  and MCP-1 was associated with poor PFS and/or OS after CAR T-cell therapy within  
35 the male group, whereas higher IL-27 and IFN $\alpha$ 2 abundance was associated with better PFS and poorer  
36 OS, respectively, within the female group. Our data suggest that biological sex may modulate the impact  
37 of baseline risk factors on survival outcomes of CAR T-cell therapy in B-cell NHL.

38

## 39 **Introduction**

40 Anti-CD19 chimeric antigen receptor (CAR) T-cell therapy demonstrates remarkable efficacy for the  
41 treatment of refractory/relapsed (r/r) large B-cell lymphoma (LBCL), follicular lymphoma and mantle cell  
42 lymphoma<sup>1-3</sup>. However, ~40-60% of patients treated with CAR-T cell therapy exhibit poor response and  
43 survival<sup>1-4</sup>. This has spurred the need to identify pre-treatment biomarkers of response to anti-CD19 CAR  
44 T-cell therapy. In addition to tumor characteristics and intrinsic composition/attributes of CAR-T cells,  
45 the inter-patient heterogeneity in immunological signatures may influence response to this therapy.  
46 Further, factors that do not directly stem from the immune system, such as sex, race and ethnicity may  
47 play a role in modulating and/or predicting the survival of patients undergoing CAR T-cell therapy.  
48 Indeed, race and ethnicity were recently shown to contribute to the differences in response to CAR T-cell  
49 therapy<sup>5</sup>. However, as race and ethnicity are more complex to define, self-reported race is widely  
50 recognized as an incomplete interpretation of genetic ancestry or human genetic variation<sup>6</sup>. Further, as  
51 reporting these variables is not mandatory<sup>7</sup> and complete medical records for race and ethnicity are not  
52 available for all patients seen at Cleveland Clinic, the present study is unable to address the impact of race  
53 and ethnicity on outcomes.

54

55 On the other hand, it is well-established that the male and female immune systems are different, and that  
56 immune responses to infections<sup>8</sup>, many autoimmune diseases<sup>9-11</sup>, and tumor pathology<sup>12,13</sup> exhibit sex  
57 bias. Sex differences can alter the tumor microenvironment<sup>14</sup> and modulate immune system homeostasis  
58 and responses via inflammatory cytokine production<sup>15, 16</sup>. The impact of sex has also been reported in the  
59 efficacy<sup>17</sup> and survival outcomes of patients<sup>18</sup> receiving immune checkpoint inhibitors for solid tumors.  
60 Therefore, baseline tumor burden and cytokine/chemokine profiles in male and female patients may  
61 differentially impact the survival outcomes of anti-CD19 CAR T-cell therapy. Understanding these  
62 differences may provide insights into sex-specific biomarkers of survival and enable better stratification

63 of outcomes. As biological sex at birth is reported for all patients undergoing anti-CD19 CAR T-cell  
64 therapy, we focused on investigating potential differences in outcomes based on baseline features of  
65 responding and non-responding male and female cohorts.

66

67 We examined if baseline cytokine/chemokine levels and tumor burden affect the survival of LBCL  
68 patients treated with *axicabtagene ciloleucel* (axi-cel) or *tisagenlecleucel* (tisa-cel) in a sex-specific  
69 manner. We demonstrate that male B-NHL patients with elevated baseline abundance of IL-8, IL-6, IL-  
70 27, Eotaxin-1, MIP-1 $\beta$ , MCP-1, TNF- $\alpha$  and CRP, as well as higher pre-treatment tumor burden exhibit  
71 poorer survival compared to those with lower abundance of these factors. On the other hand, within the  
72 female patient cohort, the survival outcomes are largely unaffected by the relative abundance of these  
73 factors. Our data suggest that an unfavorable baseline circulating cytokine/chemokine profile and high  
74 pre-treatment tumor burden may collaborate to lower the survival of male patients undergoing anti-CD19  
75 CAR T-cell therapy.

76

## 77 **Materials and Methods**

### 78 **Patient enrollment, specimen collection protocol, and clinical data**

79 All patients with r/r B-cell NHL (n=67) who received treatment with axi-cel (n=45) or tisa-cel (n=22)  
80 between 2018 and 2021 and gave informed consent for blood sample collection were included in this  
81 IRB-approved study, which was executed in accordance with the declaration of Helsinki. In addition to  
82 routine blood collection for clinical care, peripheral blood was also collected on the day of leukapheresis  
83 (baseline) and serum was stored for inclusion in the institutional biorepository. The patient cohort is  
84 represented by 46 males and 21 females and represents the observed male/female ratio within the B-NHL  
85 population<sup>19,20</sup>. Baseline clinical characteristics and demographic details were retrieved through an IRB-  
86 approved retrospective chart review of the electronic medical record system and maintained in a secure  
87 and HIPPA-compliant Research Electronic Data Capture (REDCap) system. Clinical outcomes including  
88 progression-free survival (PFS) and overall survival (OS) were recorded relative to the date of CAR T-  
89 cell infusion. Patients who did not experience the event by the end of the study period or lost to follow-up  
90 were censored for these time-to-event outcomes. Circulating lactate dehydrogenase (LDH) and C-reactive  
91 protein (CRP) levels were measured on the day of leukapheresis.

92

### 93 **Cytokine/Chemokine and tumor burden quantification**

94 Multiplexed bead arrays (Eve Technologies, Alberta, Canada) were used to quantify serum levels of 29  
95 cytokines and chemokines, including IL-1RA, IL-3, IL-4, IL-5, IL-6, IL-7, IL-8, IL-9, IL-10, IL-15, IL-  
96 18, IL-21, IL-27, IFN $\alpha$ 2, IFN- $\gamma$ , TNF- $\alpha$ , Eotaxin-1, MIP-1 $\alpha$ , MIP-1 $\beta$ , MCP-1, Flt3L, Fractalkine, G-CSF,  
97 GM-CSF, IP-10, MDC, RANTES, sCD40L and VEGF-A.

98

### 99 **Data processing and quality control**

100 Cytokine/chemokine levels were measured in three batches. Cytokines with >20% of missing values (Out  
101 of range-OOR) across patients in each batch were removed. Cytokines with  $\leq 20\%$  missing values were  
102 imputed as follows<sup>21</sup>. OOR values were replaced with median values; OOR< (out of range at the lower  
103 end) and OOR> (out of range at the higher end) were imputed with half of the minimum observed value  
104 across all samples and double of the maximum value observed across all samples, respectively. The  
105 concentrations were log-transformed and a PCA plot was generated (Supplemental Fig. 1A) to identify  
106 batch effects, using the PCA function in the FactoMineR package. Batch correction was performed using  
107 “scale and center” in R and the removal of batch effects was again confirmed by generating a PCA plot  
108 (Supplemental Fig. 1B). Batch-corrected relative abundance of each cytokine/chemokine was used for the  
109 analysis of association with survival outcomes.

110

### 111 **Assessment of clinical response**

112 Response assessment was performed 3 months after CAR T-cell therapy using the Lugano classification  
113 system and defined as a complete metabolic response, partial response, stable disease, or progressive  
114 disease, based on FDG uptake on PET-CT<sup>22</sup>. Response groups were defined based on ORR = overall  
115 response rate (includes complete response [CR] and partial response (PR)), and NR = no response  
116 (includes progressive disease [PD], stable disease [SD], death).

117

### 118 **Association and statistical analysis**

119 These analyses had two main goals: to evaluate differences in tumor burden (i.e. LDH), CRP,  
120 and each cytokine/chemokine by sex and to evaluate the association of tumor burden, CRP, and  
121 each cytokine/chemokine with OS and PFS by sex. Due to skewness, all cytokine, chemokine,  
122 LDH and CRP values were log-transformed prior to analysis. These variables were also made

123 binary at established cutoffs or if no established cutoffs existed, at the sex-specific median.  
124 Specifically, for LDH, the indication for tumor burden was calculated using two established  
125 cutoffs: one at  $\geq 250$  U/l<sup>23</sup> and the other at  $\geq 400$  U/l<sup>24</sup>. For all other cytokines and chemokines,  
126 cutoffs at sex-specific medians were used. Differences in each continuous variable by sex was  
127 assessed using a two-sample Wilcoxon test. For males and females separately, the association of  
128 each binary variable with OS and PFS was assessed using the Kaplan-Meier method and the log-  
129 rank test. We note that the number of males vs females in the present cohort differs, and thus  
130 comparing significance by sex is not valid. We also note that our analyses and results are  
131 hypothesis generating and as such, the findings will require validation in a larger, separate  
132 dataset. No adjustments for multiple comparisons are made. All statistical analyses were  
133 performed using R v4.1.0 and p-values  $< 0.05$  were considered significant.

134

135 **Results**

136 Baseline and post-treatment clinical characteristics of the r/r B-NHL patient cohort treated with anti-  
137 CD19 CAR T-cells are shown in Table 1. The median age was 63 years (range 25-77), and 68.7% of  
138 patients in the cohort were male. The median age of males and females was 64.5 years (range 25-77) and  
139 61 years (range 30-74), respectively. The clinical diagnosis was diffuse large B-cell lymphoma (DLBCL)  
140 (n = 46, males=35, females=11), transformed follicular lymphoma (n = 12, males=5, females=7), or  
141 primary mediastinal B-cell lymphoma (n = 7, males=5, females=2), and 40.3% of the patients had  
142 received prior autologous stem cell transplantation. Axi-cel was received by 45 patients (males=29,  
143 females=16) and tisa-cel was received by 22 patients (males=17, females=5). The median durations for  
144 overall survival (OS) and progression-free survival (PFS) were 332 days and 134 days, respectively.

145

146 **High baseline tumor burden and CRP are associated with poor survival in male patients**

147 We first investigated if there is sex bias in overall and progression-free survival of B-cell NHL patients  
148 treated with anti-CD19 CAR T cells. Similar to previous findings in pediatric B-ALL patients treated with  
149 CD19-directed CAR T-cells<sup>25</sup>, male and female r/r B-cell NHL patients did not show a significant  
150 difference in the probability of OS (Supplemental Fig. 2A) or PFS (Supplemental Fig. 2B) upon CAR T-  
151 cell therapy. Additionally, the abundance of established baseline risk factors such as tumor burden  
152 (measured as LDH) (Supplemental Fig. 2C) and CRP (Supplemental Fig. 2D) were not different between  
153 male and female patients in our cohort. Next, we examined if tumor burden and CRP have different  
154 associations with survival when the male and female groups and analyzed separately. A previous study  
155 used  $\geq 250$  U/l LDH to stratify high and low tumor burden and identified this marker as the sole predictor  
156 of survival<sup>23</sup>; therefore, initially we first used the same cut-off in our analysis. Patients who had  $\geq 250$  U/l  
157 LDH prior to treatment were at greater risk of poor PFS and OS after axi-cel (n=45) and tisa-cel (n=22)  
158 therapy compared to those with  $< 250$  U/l LDH (Fig. 1A). Importantly, while male patients with  $\geq 250$  U/l  
159 LDH had poorer PFS and OS compared to those with  $< 250$  U/l LDH (Fig. 1B), there was no association  
160 between LDH concentration and OS or PFS in female patients (Fig. 1C). Next, because  $\geq 400$  U/l LDH



161 was reported to be associated with poor PFS in patients receiving anti-CD19 CAR T-cell therapy<sup>24</sup>, we  
162 also performed association analysis using this cut-off. We found that  $\geq 400$  U/l LDH was significantly  
163 associated with poor PFS and OS in all patients, and in the male only group, but not in the female only  
164 group (Supplemental Fig. 3). Among pre-treatment circulating biomarkers, CRP is an important regulator  
165 of inflammation and elevated serum CRP is known to be associated with poor PFS or OS after CAR T-  
166 cell therapy in multiple myeloma patients<sup>26</sup>, and DLBCL patients after CAR T-cell therapy<sup>27</sup> or  
167 chemotherapy<sup>28</sup>. Hence, we further investigated if CRP levels were associated with differential survival  
168 outcomes in separate male and female cohorts. Elevated CRP was significantly associated with poor OS  
169 when considering both male and female patients together (Fig. 2A, P=0.0172) or males alone (Fig. 2B,  
170 P=0.007), but no association was observed in the female only cohort (Fig. 2C, P=0.7336). On the other  
171 hand, elevated CRP was not significantly associated with poor PFS in male and female patients together  
172 (Fig. 2A, P=0.0932) or only males (Fig. 2B, P=0.1028) or only females (Fig. 2C, P=0.5199). It is  
173 important to note that while above median CRP abundance showed a trend of association with poor PFS  
174 in male and female patients together (Fig. 2A) and only in males (Fig. 2B), this trend was not evident in  
175 the female only cohort (Fig. 2C).

176

### 177 **High abundance of IL-6, IL-8, IL-27, Eotaxin-1, MIP-1 $\beta$ and MCP-1 associated with poor survival** 178 **in male patients**

179 Because CRP is an important inflammatory biomarker, we examined if the pre-treatment levels of other  
180 serum cytokines/chemokines that mediate inflammation during CAR T-cell therapy were different  
181 between male and female patients. For this study, we chose 29 cytokines/chemokines (IL-1RA, IL-3, IL-  
182 4, IL-5, IL-6, IL-7, IL-8, IL-9, IL-10, IL-15, IL-18, IL-21, IL-27, IFN $\alpha$ 2, IFN- $\gamma$ , TNF- $\alpha$ , Eotaxin-1, MIP-  
183 1 $\alpha$ , MIP-1 $\beta$ , MCP-1, Flt3L, Fractalkine, G-CSF, GM-CSF, IP-10, MDC, RANTES, sCD40L and VEGF-  
184 A) that are of myeloid and lymphoid origin and play essential roles in innate and/or adaptive immunity.  
185 With the exception of IL-3, the relative abundance of baseline circulating cytokines and chemokines was

186 not significantly different between male and female patients (Fig. 3). We reasoned that despite no  
187 observable differences in abundance, these cytokine/chemokines may have different interactions with the  
188 male vs. female immune environment and could therefore be associated differentially with survival in  
189 each sex. To investigate this, the association of cytokine abundance with survival was analyzed separately  
190 for only male, only female or both sexes together. The relative abundance of specific  
191 cytokines/chemokines within each cohort was classified as either below or above median, and median  
192 abundance is indicated for each cohort and cytokine in PFS and OS association analysis. When both sexes  
193 were analyzed together, poorer PFS was found to be associated with higher abundance of MIP-1 $\beta$  and  
194 Eotaxin-1 ( $P < 0.05$ ), and IL-8 ( $P = 0.074$ ) (Fig. 4). When associations of cytokine abundance with PFS  
195 were analyzed separately in male only and female only patients, higher abundance of IL-8, Eotaxin-1,  
196 MIP-1 $\beta$  ( $P < 0.05$ ), IL-6 ( $P = 0.075$ ), and MCP-1 ( $P = 0.086$ ) were associated with poor PFS in male patients  
197 (Fig. 4). The abundance of these cytokines had no observable associations with PFS in the female only  
198 cohort but elevated IL-27 was significantly associated with better PFS in females (Fig. 4). Higher relative  
199 abundance of IL-6, IL-8, IL-27, Eotaxin-1, MCP-1, and TNF- $\alpha$  was also significantly associated ( $P < 0.05$ )  
200 with poorer OS when considering the male only cohort; but no observable difference in OS was found in  
201 the female only cohort for these cytokines. (Fig. 5). Interestingly, IFN $\alpha$ 2 was the only cytokine whose  
202 higher relative abundance was associated with poor OS ( $P = 0.07$ ) within the female only cohort (Fig. 5).  
203 Higher abundance of IL-6 was associated ( $P < 0.05$ ) with poor OS when male and female sexes were  
204 analyzed together or in the male only cohort, but no association was observed in the female only cohort  
205 (Fig. 5). While IL-7 is an important T-cell promoting cytokine, its pre-treatment abundance was not  
206 associated with PFS (Fig. 4) or OS (Fig. 5). Additionally, the relative abundance of IL-1RA, IL-3, IL-4,  
207 IL-9, IL-10, IL-15, IL-18, IL-21, Flt3L, Fractalkine, G-CSF, GM-CSF, IP-10, MDC, RANTES, sCD40L,  
208 and VEGF-A showed no association with PFS (Supplemental Fig. 4) or OS (Supplemental Fig. 5) in male  
209 or female patients. These data indicate that despite similar overall abundance of the analyzed cytokines in  
210 male and female r/r B-NHL patients, the association of their individual relative abundance with survival  
211 after anti-CD19 CAR T-cell therapy varies in a sex-biased manner.

212

213 Taken together, our results demonstrate that higher tumor burden, CRP, IL-6, IL-27, TNF- $\alpha$ , IL-8,  
214 Eotaxin-1, MIP-1 $\beta$  and MCP-1 represent a novel signature of poor survival in male, but not female B-  
215 NHL patients treated with anti-CD19 CAR T-cells.

216

217 **Discussion**

218 A variety of pre-treatment biomarkers of clinical outcomes have been reported in LBCL patients  
219 undergoing anti-CD19 CAR T-cell therapy<sup>29,30</sup>. However, the impact of sex on the association between  
220 pre-treatment tumor and immune environment and survival after CAR T-cell therapy has not been  
221 comprehensively explored. Here, we demonstrate that higher baseline tumor burden and greater relative  
222 abundance of a pre-treatment inflammatory signature consisting of IL-8, IL-6, TNF- $\alpha$ , Eotaxin-1, MIP-  
223 1 $\beta$ , MCP-1 and CRP confers risk of poor survival in male patients treated with anti-CD19 CAR T-cells.  
224 On the other hand, female patients undergoing CAR T-cell therapy do not show an association between  
225 the relative abundance of these pre-treatment biomarkers and survival. Our findings are consistent with  
226 the tenet that the immune system has different interactions in the male and female sex and that this plays a  
227 role in establishing sex differences in response to immunotherapy.

228

229 A pan-cancer analysis demonstrated sex as a significant factor influencing cancer-specific survival and  
230 females have better prognosis than male patients in most cancers<sup>31</sup>. In B-cell lymphoma patients, the male  
231 sex is an adverse prognostic factor when treated with immunochemotherapy but not when treated with  
232 chemotherapy<sup>32</sup>. Our finding that higher baseline tumor burden predisposes only male patients to a poor  
233 survival outcome indicates sex bias in outcomes of CAR T-cell therapy. Specific components of tumors  
234 in males may play a role in this predisposition, such as high circulating cytokine levels and monocytic-  
235 myeloid-derived suppressor cells (mMDSCs), both of which are associated with resistance to CAR T-cell  
236 therapy<sup>30</sup>. Interestingly, males have higher levels of mMDSCs in general<sup>33</sup> and this is thought to be one of  
237 the sex-specific mechanisms that prevents autoimmune diseases and underlies poorer response to  
238 infections<sup>34</sup>. Along these lines, CRP, another known biomarker of poor prognosis in r/r DLBCL after  
239 CAR T-cell therapy<sup>27</sup>, was reported to support the expansion of MDSCs and suppression of T cell  
240 proliferation<sup>35</sup>. It is conceivable that male patients with larger tumor burden have higher levels of

241 mMDSCs which interfere with CAR T-cell activity. Therefore, the association of higher pre-treatment  
242 CRP and tumor burden with poor survival suggests the existence of an unfavorable immune environment  
243 in male r/r B-NHL patients that may limit optimal CAR T-cell activity.

244

245 Inflammatory cytokines and chemokines are important for the activation of T cell-mediated immune  
246 reactions and recruitment of myeloid cells, and together these soluble factors facilitate CAR T-cell  
247 activity<sup>36-38</sup>. Remarkably, we did not observe a significant difference in the serum abundance of  
248 cytokines/chemokines between male and female r/r B-NHL patients treated with anti-CD19 CAR T-cells,  
249 with the exception of IL-3. Yet, in male patients, higher pre-treatment abundance of IL-6, IL-8, IL-27,  
250 TNF- $\alpha$ , Eotaxin-1 and MIP-1 $\beta$  confers risk of poor survival outcomes. As these associations are not  
251 observed in female patients, our findings indicate that the manner in which these cytokines interact with  
252 the male environment may be different from that in the female environment, and likely confers poor  
253 survival probability in the former. Interestingly, IL-6, TNF- $\alpha$ , IL-8, MIP-1 $\beta$  and MCP-1 are known to be  
254 associated with tumor burden and tumor growth in various cancers<sup>39-42</sup>. High tumor burden is associated  
255 with the IL-6 signaling pathway<sup>43</sup> and with elevated levels of TNF- $\alpha$ <sup>44</sup> and CRP<sup>45</sup> in aggressive cancers.  
256 Additionally, inflammatory stimuli such as IL-6 can indirectly induce the expression of chemokine  
257 mediators such as MCP-1<sup>46-48</sup> which recruit MDSCs and support tumor growth<sup>49</sup>. Eotaxin-1 is a CC  
258 subfamily chemokine similar to MCP-1<sup>47</sup> and is reported to inhibit antitumor immunity<sup>50,51</sup>. Therefore, the  
259 association of higher relative abundance of IL-8, IL-6, TNF- $\alpha$ , Eotaxin-1, MIP-1 $\beta$  and MCP-1 with poor  
260 survival probability in the male patients suggests a unique interaction network between the tumor and  
261 circulating environments that predisposes male patients to poorer survival outcomes after anti-CD19 CAR  
262 T-cell therapy. Indeed, some of these interactions may be mediated by sex hormones<sup>52</sup>, social  
263 behaviors<sup>53,54</sup>, chromosomal genetics<sup>55</sup>, and sex chromosome-encoded genetic environment in the male  
264 sex<sup>56</sup>.

265

266 While a majority of associations described here impact survival outcomes in male r/r B-NHL patients,  
267 there were notable associations between abundance of two cytokines with survival in female r/r B-NHL  
268 patients – IL-27 and IFN $\alpha$ 2. Female patients with higher relative abundance of IL-27 showed significant  
269 association with better PFS, and those with higher abundance of IFN $\alpha$ 2 showed poorer OS. IL-27 is a  
270 pleiotropic cytokine with both pro- and anti-inflammatory activities and IL-27 expressing T cells  
271 demonstrate sustained anti-tumor immunity and cytotoxicity<sup>57</sup>. Interestingly, our data reveal context-  
272 specific associations of this cytokine – in male patients elevated abundance increases risk of poor overall  
273 survival, yet in female patients, higher abundance of IL-27 predicts better progression-free survival. The  
274 molecular basis of this difference is unclear and deserves future investigation. Type I IFNs, specifically  
275 IFN $\alpha$ , are a primary source of pathogenesis in autoimmune diseases such as systemic lupus  
276 erythematosus that exhibit a strong female sex bias<sup>58</sup>. Therefore, female r/r B-NHL patients who have  
277 higher abundance of IFN $\alpha$ 2 may experience similar inflammatory pathologies that affect their overall  
278 survival after CAR T-cell therapy. The mechanistic basis of the unique associations between the  
279 abundance of IL-27 and IFN $\alpha$ 2 and survival in only the female patients in our cohort is currently unclear  
280 and will need to be further investigated.

281

282 A few limitations should be considered when inferring the findings of our study. First, the relatively small  
283 sample size currently limits the generalizability our findings to a larger population. Further, other factors,  
284 such as ethnicity, race, type of lymphoma, type of CAR T-cell therapy and the use of bridging therapy  
285 may influence the outcome of CAR T-cell therapy response in a sexually dimorphic manner. We were  
286 unable to investigate these factors, either due to lack of available data or small cohort size. Despite these  
287 limitations, our pilot study suggests that the observed differences in clinical survival outcome in male and  
288 female patients are primarily driven by different biological interactions of cytokines and tumor

289 microenvironment in each sex. Further research is needed to validate this hypothesis and explore the  
290 underlying mechanisms.

291

292 In summary, our study reveals sex bias in the association of pre-treatment clinical and molecular  
293 biomarkers with clinical outcomes of CAR T-cell therapy in r/r B-NHL patients, and underscores the  
294 importance of acknowledging sexual dimorphism in the risk factors associated with outcomes of  
295 personalized cell-based immunotherapies. Stratifying the outcomes separately in male and female patients  
296 may provide avenues for gender specific adaptations of CAR-T cell treatment.

297

298 **Acknowledgments**

299 This study was funded by VeloSano Bike to Cure, Cleveland Clinic Center of Excellence in Lymphoid  
300 Malignancies Research, and Taussig Cancer Institute. The authors thank the patients who consented to  
301 this study, as well as clinical nurses and coordinators who contributed meaningful effort to this study.

302

303 **Authorship Contributions**

304 M.S.P. and A.J. collected and processed the blood samples; M.S.P. and A.M. collected clinical data;  
305 M.S.P., P.B., S. P., B.T.H., and N.G. analyzed the data; M.S.P., S.P., B.T.H., and N.G. wrote the  
306 manuscript; B.T.H. and N.G. provided funding support; and N.G. conceptualized and supervised the  
307 study.

308

309 **Disclosure of Potential Conflicts of Interest**

310 B.T.H. has received research funding from Takeda; Consultancy, Honoraria, Research Funding from  
311 Genentech, Karyopharm, Celgene, Abbvie, Pharmacyclics, Beigene, AstraZenica, Kite, a Gilead  
312 Company, BMS; Consultancy, Honoraria from Novartis.

313

314 **Data sharing statement**

315 For original data, please contact the corresponding author ([guptan@ccf.org](mailto:guptan@ccf.org)).



316 **References**

- 317 1. Nastoupil LJ, Jain MD, Feng L, et al. Standard-of-Care Axicabtagene Ciloleucel for Relapsed or  
318 Refractory Large B-Cell Lymphoma: Results From the US Lymphoma CAR T Consortium. *J Clin Oncol.*  
319 2020;38(27):3119-3128.
- 320 2. Neelapu SS, Locke FL, Bartlett NL, et al. Axicabtagene Ciloleucel CAR T-Cell Therapy in  
321 Refractory Large B-Cell Lymphoma. *N Engl J Med.* 2017;377(26):2531-2544.
- 322 3. Schuster SJ, Bishop MR, Tam CS, et al. Tisagenlecleucel in Adult Relapsed or Refractory  
323 Diffuse Large B-Cell Lymphoma. *N Engl J Med.* 2019;380(1):45-56.
- 324 4. Crump M, Neelapu SS, Farooq U, et al. Outcomes in refractory diffuse large B-cell lymphoma:  
325 results from the international SCHOLAR-1 study. *Blood.* 2017;130(16):1800-1808.
- 326 5. Locke FL, Siddiqi T, Jacobson CA, et al. Real-world and clinical trial outcomes in large B-cell  
327 lymphoma with axicabtagene ciloleucel across race and ethnicity. *Blood.* 2024;143(26):2722-2734.
- 328 6. Mersha TB, Abebe T. Self-reported race/ethnicity in the age of genomic research: its potential  
329 impact on understanding health disparities. *Hum Genomics.* 2015;9(1):1.
- 330 7. Turner BE, Steinberg JR, Weeks BT, Rodriguez F, Cullen MR. Race/ethnicity reporting and  
331 representation in US clinical trials: A cohort study. *The Lancet Regional Health – Americas.* 2022;11.
- 332 8. Klein SL. The effects of hormones on sex differences in infection: from genes to behavior.  
333 *Neurosci Biobehav Rev.* 2000;24(6):627-638.
- 334 9. Afshan G, Afzal N, Qureshi S. CD4+CD25(hi) regulatory T cells in healthy males and females  
335 mediate gender difference in the prevalence of autoimmune diseases. *Clin Lab.* 2012;58(5-6):567-571.
- 336 10. Billi AC, Kahlenberg JM, Gudjonsson JE. Sex bias in autoimmunity. *Curr Opin Rheumatol.*  
337 2019;31(1):53-61.

- 338 11. Rubtsova K, Marrack P, Rubtsov AV. Sexual dimorphism in autoimmunity. *J Clin Invest.*  
339 2015;125(6):2187-2193.
- 340 12. Ribas A, Wolchok JD. Cancer immunotherapy using checkpoint blockade. *Science.*  
341 2018;359(6382):1350-1355.
- 342 13. Wang PF, Song HF, Zhang Q, Yan CX. Pan-cancer immunogenomic analyses reveal sex  
343 disparity in the efficacy of cancer immunotherapy. *Eur J Cancer.* 2020;126:136-138.
- 344 14. Saad M, Tan AC, Naqa IE, et al. 88 Evidence of enhanced immune activation within the tumor  
345 microenvironment and the circulation of female patients with high-risk melanoma compared to males. *J*  
346 *Immunother Cancer.* 2021;9(Suppl 2):A96-A96.
- 347 15. Lefèvre N, Corazza F, Valsamis J, et al. The Number of X Chromosomes Influences  
348 Inflammatory Cytokine Production Following Toll-Like Receptor Stimulation. *Front Immunol.*  
349 2019;10:1052.
- 350 16. Berghella AM, Contasta I, Lattanzio R, et al. The Role of Gender-specific Cytokine Pathways as  
351 Drug Targets and Gender-specific Biomarkers in Personalized Cancer Therapy. *Curr Drug Targets.*  
352 2017;18(4):485-495.
- 353 17. Santoni M, Rizzo A, Mollica V, et al. The impact of gender on The efficacy of immune  
354 checkpoint inhibitors in cancer patients: The MOUSEION-01 study. *Crit Rev Oncol Hematol.*  
355 2022;170:103596.
- 356 18. Grassadonia A, Sperduti I, Vici P, et al. Effect of Gender on the Outcome of Patients Receiving  
357 Immune Checkpoint Inhibitors for Advanced Cancer: A Systematic Review and Meta-Analysis of Phase  
358 III Randomized Clinical Trials. *J Clin Med.* 2018;7(12):542.

- 359 19. Burkhardt B, Zimmermann M, Oschlies I, et al. The impact of age and gender on biology, clinical  
360 features and treatment outcome of non-Hodgkin lymphoma in childhood and adolescence. *Br J Haematol.*  
361 2005;131(1):39-49.
- 362 20. Morton LM, Wang SS, Devesa SS, Hartge P, Weisenburger DD, Linet MS. Lymphoma incidence  
363 patterns by WHO subtype in the United States, 1992-2001. *Blood.* 2006;107(1):265-276.
- 364 21. Jalota A, Hershberger CE, Patel MS, et al. Host metabolome predicts the severity and onset of  
365 acute toxicities induced by CAR T-cell therapy. *Blood Advances.* 2023;7(17):4690-4700.
- 366 22. Cheson BD, Fisher RI, Barrington SF, et al. Recommendations for initial evaluation, staging, and  
367 response assessment of Hodgkin and non-Hodgkin lymphoma: the Lugano classification. *J Clin Oncol.*  
368 2014;32(27):3059-3068.
- 369 23. Suguro M, Kanda Y, Yamamoto R, et al. High serum lactate dehydrogenase level predicts short  
370 survival after vincristine-doxorubicin-dexamethasone (VAD) salvage for refractory multiple myeloma.  
371 *Am J Hematol.* 2000;65(2):132-135.
- 372 24. Karschnia P, Jordan JT, Forst DA, et al. Clinical presentation, management, and biomarkers of  
373 neurotoxicity after adoptive immunotherapy with CAR T cells. *Blood.* 2019;133(20):2212-2221.
- 374 25. Faruqi AJ, Ligon JA, Borgman P, et al. The impact of race, ethnicity, and obesity on CAR T-cell  
375 therapy outcomes. *Blood Adv.* 2022;6(23):6040-6050.
- 376 26. Liu Y, Jie X, Nian L, et al. A combination of pre-infusion serum ferritin, CRP and IL-6 predicts  
377 outcome in relapsed/refractory multiple myeloma patients treated with CAR-T cells. *Frontiers in*  
378 *Immunology.* 2023;14.
- 379 27. Vercellino L, Di Blasi R, Kanoun S, et al. Predictive factors of early progression after CAR T-cell  
380 therapy in relapsed/refractory diffuse large B-cell lymphoma. *Blood Adv.* 2020;4(22):5607-5615.

- 381 28. Troppan KT, Schlick K, Deutsch A, et al. C-reactive protein level is a prognostic indicator for  
382 survival and improves the predictive ability of the R-IPI score in diffuse large B-cell lymphoma patients.  
383 *British Journal of Cancer*. 2014;111(1):55-60.
- 384 29. Faramand R, Jain M, Staedtke V, et al. Tumor Microenvironment Composition and Severe  
385 Cytokine Release Syndrome (CRS) Influence Toxicity in Patients with Large B-Cell Lymphoma Treated  
386 with Axicabtagene Ciloleucel. *Clin Cancer Res*. 2020;26(18):4823-4831.
- 387 30. Jain MD, Zhao H, Wang X, et al. Tumor interferon signaling and suppressive myeloid cells are  
388 associated with CAR T-cell failure in large B-cell lymphoma. *Blood*. 2021;137(19):2621-2633.
- 389 31. He Y, Su Y, Zeng J, et al. Cancer-specific survival after diagnosis in men versus women: A pan-  
390 cancer analysis. *MedComm (2020)*. 2022;3(3):e145.
- 391 32. Riihijärvi S, Taskinen M, Jerkeman M, Leppä S. Male gender is an adverse prognostic factor in  
392 B-cell lymphoma patients treated with immunochemotherapy. *Eur J Haematol*. 2011;86(2):124-128.
- 393 33. Bayik D, Zhou Y, Park C, et al. Myeloid-Derived Suppressor Cell Subsets Drive Glioblastoma  
394 Growth in a Sex-Specific Manner. *Cancer Discov*. 2020;10(8):1210-1225.
- 395 34. Kiaee F, Jamaati H, Shahi H, et al. Immunophenotype and function of circulating myeloid  
396 derived suppressor cells in COVID-19 patients. *Scientific Reports*. 2022;12(1):22570.
- 397 35. Jimenez RV, Kuznetsova V, Connelly AN, Hel Z, Szalai AJ. C-Reactive Protein Promotes the  
398 Expansion of Myeloid Derived Cells With Suppressor Functions. *Front Immunol*. 2019;10:2183.
- 399 36. Umansky V, Blattner C, Gebhardt C, Utikal J. The Role of Myeloid-Derived Suppressor Cells  
400 (MDSC) in Cancer Progression. *Vaccines (Basel)*. 2016;4(4):36.

- 401 37. Schlecker E, Stojanovic A, Eisen C, et al. Tumor-infiltrating monocytic myeloid-derived  
402 suppressor cells mediate CCR5-dependent recruitment of regulatory T cells favoring tumor growth. *J*  
403 *Immunol.* 2012;189(12):5602-5611.
- 404 38. Salomon BL, Leclerc M, Tosello J, Ronin E, Piaggio E, Cohen JL. Tumor Necrosis Factor  $\alpha$  and  
405 Regulatory T Cells in Oncoimmunology. *Front Immunol.* 2018;9:444.
- 406 39. Sanmamed MF, Carranza-Rua O, Alfaro C, et al. Serum interleukin-8 reflects tumor burden and  
407 treatment response across malignancies of multiple tissue origins. *Clin Cancer Res.* 2014;20(22):5697-  
408 5707.
- 409 40. Gazzaniga S, Bravo AI, Guglielmotti A, et al. Targeting Tumor-Associated Macrophages and  
410 Inhibition of MCP-1 Reduce Angiogenesis and Tumor Growth in a Human Melanoma Xenograft. *Journal*  
411 *of Investigative Dermatology.* 2007;127(8):2031-2041.
- 412 41. Mazur G, Wróbel T, Butrym A, Kapelko-Słowik K, Poreba R, Kuliczkowski K. Increased  
413 monocyte chemoattractant protein 1 (MCP-1/CCL-2) serum level in acute myeloid leukemia. *Neoplasma.*  
414 2007;54(4):285-289.
- 415 42. Zhang L, Zhang M, Wang L, et al. Identification of CCL4 as an Immune-Related Prognostic  
416 Biomarker Associated With Tumor Proliferation and the Tumor Microenvironment in Clear Cell Renal  
417 Cell Carcinoma. *Front Oncol.* 2021;11:694664.
- 418 43. Hashwah H, Bertram K, Stirn K, et al. The IL-6 signaling complex is a critical driver, negative  
419 prognostic factor, and therapeutic target in diffuse large B-cell lymphoma. *EMBO Molecular Medicine.*  
420 2019;11(10):e10576.
- 421 44. Mozas P, Rivas-Delgado A, Rivero A, et al. High serum levels of IL-2R, IL-6, and TNF- $\alpha$  are  
422 associated with higher tumor burden and poorer outcome of follicular lymphoma patients in the rituximab  
423 era. *Leukemia Research.* 2020;94:106371.

- 424 45. Koukourakis MI, Kambouromiti G, Pitsiava D, Tsousou P, Tsiarkatsi M, Kartalis G. Serum C-  
425 reactive Protein (CRP) Levels in Cancer Patients are Linked with Tumor Burden and are Reduced by  
426 Anti-hypertensive Medication. *Inflammation*. 2009;32(3):169-175.
- 427 46. Choi S, You S, Kim D, et al. Transcription factor NFAT5 promotes macrophage survival in  
428 rheumatoid arthritis. *J Clin Invest*. 2017;127(3):954-969.
- 429 47. Van Coillie E, Van Damme J, Opdenakker G. The MCP/eotaxin subfamily of CC chemokines.  
430 *Cytokine Growth Factor Rev*. 1999;10(1):61-86.
- 431 48. Yoshimura T. The chemokine MCP-1 (CCL2) in the host interaction with cancer: a foe or ally?  
432 *Cell Mol Immunol*. 2018;15(4):335-345.
- 433 49. Mittal P, Wang L, Akimova T, et al. The CCR2/MCP-1 Chemokine Pathway and Lung  
434 Adenocarcinoma. *Cancers (Basel)*. 2020;12(12):3723.
- 435 50. Wang R, Huang K. CCL11 increases the proportion of CD4+CD25+Foxp3+ Treg cells and the  
436 production of IL-2 and TGF- $\beta$  by CD4+ T cells via the STAT5 signaling pathway. *Mol Med Rep*.  
437 2020;21(6):2522-2532.
- 438 51. Yang J, Hawkins OE, Barham W, et al. Myeloid IKK $\beta$  Promotes Antitumor Immunity by  
439 Modulating CCL11 and the Innate Immune Response. *Cancer Research*. 2014;74(24):7274-7284.
- 440 52. Conforti F, Pala L, Goldhirsch A. Different effectiveness of anticancer immunotherapy in men  
441 and women relies on sex-dimorphism of the immune system. *Oncotarget*. 2018;9(58):31167-31168.
- 442 53. Kim SY, Lee S, Lee E, et al. Sex-biased differences in the correlation between epithelial-to-  
443 mesenchymal transition-associated genes in cancer cell lines. *Oncol Lett*. 2019;18(6):6852-6868.
- 444 54. Zhu Y, Shao X, Wang X, Liu L, Liang H. Sex disparities in cancer. *Cancer Lett*. 2019;466:35-38.

- 445 55. Pinheiro I, Dejager L, Libert C. X-chromosome-located microRNAs in immunity: might they  
446 explain male/female differences? The X chromosome-genomic context may affect X-located miRNAs  
447 and downstream signaling, thereby contributing to the enhanced immune response of females. *Bioessays*.  
448 2011;33(11):791-802.
- 449 56. Klein SL, Flanagan KL. Sex differences in immune responses. *Nature Reviews Immunology*.  
450 2016;16(10):626-638.
- 451 57. Afsahi A, Burchett R, Baker CL, Moore AE, Bramson JL. Constitutive expression of interleukin-  
452 27 diminishes proinflammatory cytokine production without impairing effector function of engineered T  
453 cells. *Cytotherapy*. 2023;25(9):913-919.
- 454 58. Postal M, Vivaldo JF, Fernandez-Ruiz R, Paredes JL, Appenzeller S, Niewold TB. Type I  
455 interferon in the pathogenesis of systemic lupus erythematosus. *Curr Opin Immunol*. 2020;67:87-94.
- 456

457 **Table 1: Baseline and post-treatment clinical characteristics**

<b>Patient clinical characteristics</b>	<b>Total N=67</b>	<b>Male N=46</b>	<b>Female N=21</b>
<b>Age-Median</b> (range, years)	63 (25-77)	64.5 (25-77)	61 (30-74)
<b>Males (%)</b>	68.7	-	-
<b>Number of prior therapies</b> (median, range)	3 (2-6)	3 (2-6)	3 (2-6)
<b>Prior autologous stem cell transplantation (%)</b>	40.3	37	47.6
<b>Disease Type</b>			
Diffuse large B-cell lymphoma (DLBCL), no. (%)	46 (68.7)	35 (76)	11 (52.4)
Primary mediastinal B-cell lymphoma, no. (%)	7 (10.4)	5 (11)	2 (9.5)
Transformed follicular lymphoma (TFL), no. (%)	12 (17.9)	5 (11)	7 (33.3)
Unknown (%)	2 (3)	1 (2)	1 (4.8)
<b>Type of Therapy</b>			
Axicabtagene ciloleucel, no. (%)	45 (67.1)	29 (63)	16 (76.2)
Tisagenlecleucel, no. (%)	22 (32.8)	17 (37)	5 (23.8)
<b>Treatments</b>			
<b>3-month response<sup>a</sup></b>	<b>Total (N=65)</b>	<b>Total (N=45)</b>	<b>Total (N=20)</b>
OR, no. (%)	33 (50.8)	23 (51.1)	10 (50)
CR, no. (%)	26 (40.0)	16 (35.6)	10 (50)
NR, no. (%)	32 (49.2)	22 (48.9)	10 (50)
<b>LDH-Median (U/l)</b>	254	253.5	276

458

459 <sup>a</sup>CR: Complete response, PR: Partial response, OR: Overall response (CR+PR), NR: No response  
 460 (Progressive disease, Stable disease, Death); LDH: Lactate Dehydrogenase

461



462 **Figure Legends**

463

464 **Figure 1. Male patients with higher pre-treatment tumor burden show poorer survival after treated**  
465 **with anti-CD19 CAR T-cells.** Association of baseline LDH levels with overall survival (OS), and  
466 progression-free survival (PFS) in both male and female (A), only male (B), or only female (C), LBCL  
467 patients.  $P < 0.05$ ; Males,  $n=46$ ; Females,  $n=21$ ; Yes,  $n=45$ ; Kym,  $n=22$ . LDH cut-off, 250 U/l

468

469 **Figure 2. Male patients with higher pre-treatment CRP abundance show poorer survival upon**  
470 **treatment with anti-CD19 CAR T-cells.** Association of baseline CRP with overall survival (OS), and  
471 progression-free survival (PFS) in both male and female (A), or only male (B), or only female (C), LBCL  
472 patients.  $P < 0.05$ ; Males,  $n=46$ ; Females,  $n=21$ ; Yes,  $n=45$ ; Kym,  $n=22$ .

473

474 **Figure 3. Baseline cytokine and chemokine levels in male and female LBCL patients.** Pre-treatment  
475 relative abundance of cytokines and chemokines was compared in the serum of male and female LBCL  
476 patients.  $P < 0.05$ ; Males,  $n=42$ ; Females,  $n=20$ ; Yes,  $n=42$ ; Kym,  $n=20$ .

477

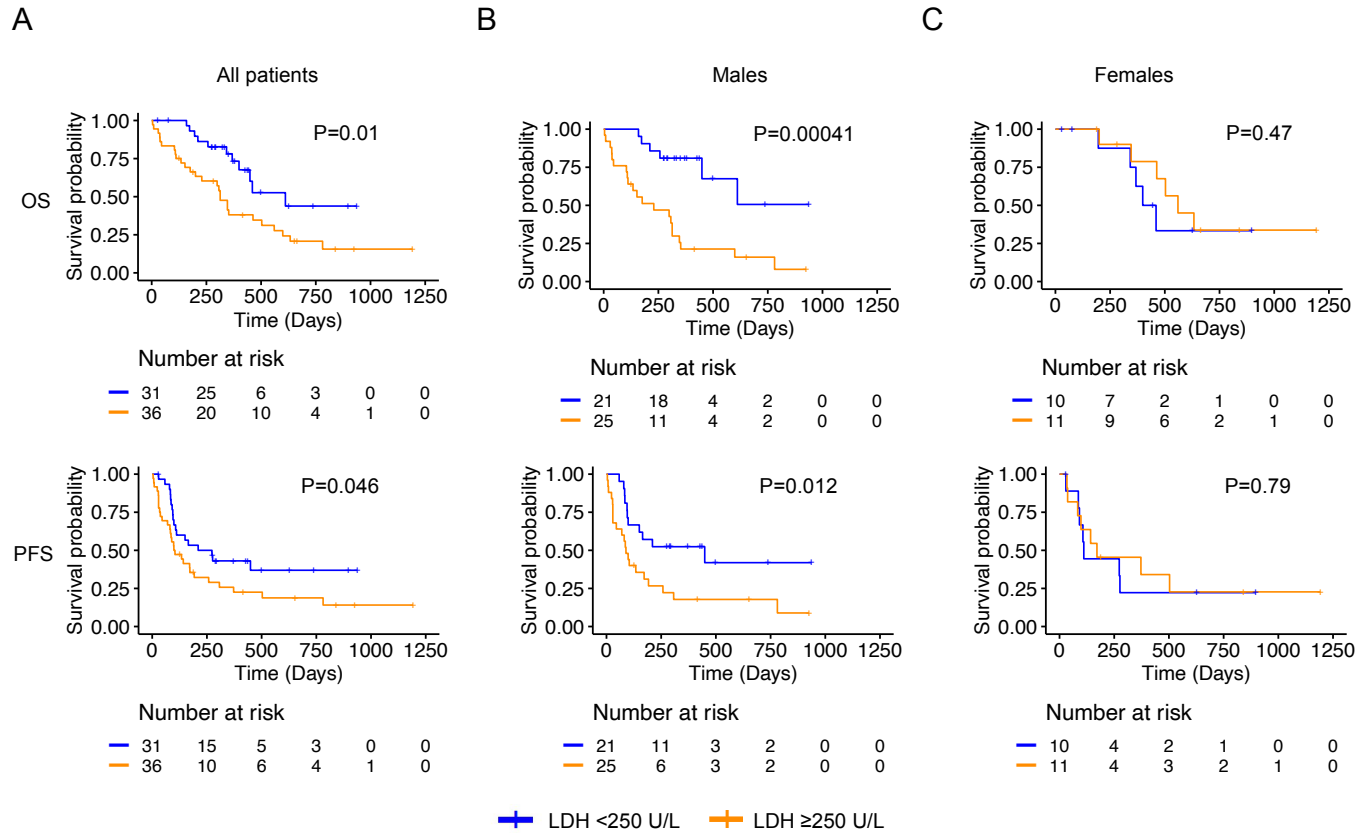
478 **Figure 4. Male patients with elevated pre-treatment abundance of IL-8, Eotaxin-1 and MIP-1 $\beta$**   
479 **show poorer PFS upon treatment with anti-CD19 CAR T-cells.** Association between relative  
480 abundance of the indicated cytokines and PFS in both male and female, or only male or only female  
481 LBCL patients.  $P < 0.05$ ; Males,  $n=42$ ; Females,  $n=20$ ; Yes,  $n=42$ ; Kym,  $n=20$ .

482

483 **Figure 5. Male patients with elevated pre-treatment abundance of IL-6, IL-8, IL-27, Eotaxin-1,**  
484 **MCP-1 and TNF- $\alpha$  show poorer OS upon treatment with anti-CD19 CAR T-cells.** Association  
485 between relative abundance of the indicated cytokines and OS in both male and female, or only male or  
486 only female LBCL patients.  $P < 0.05$ ; Males,  $n=42$ ; Females,  $n=20$ ; Yes,  $n=42$ ; Kym,  $n=20$ .

487

## Figure 1



**Figure 2**

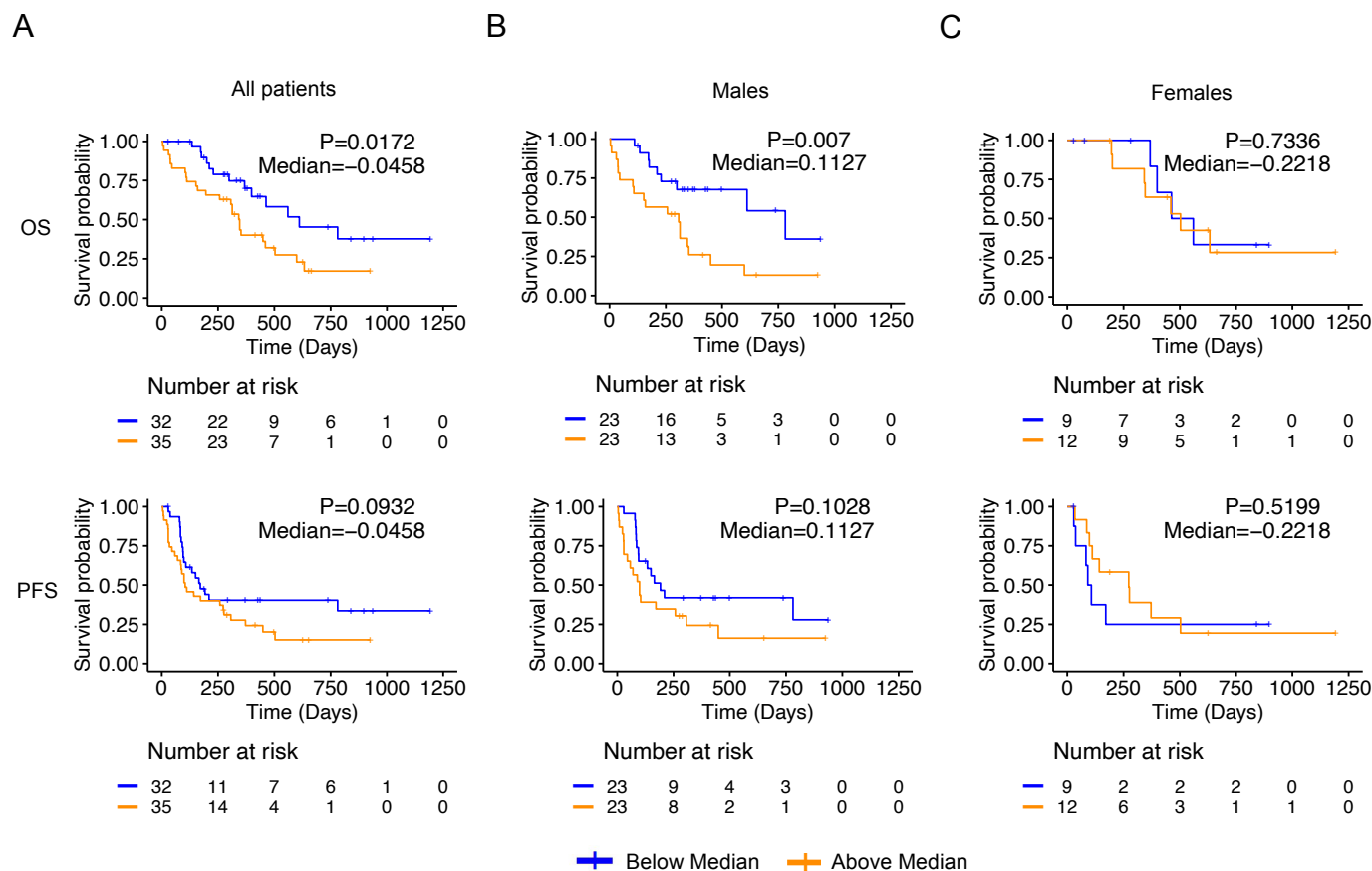
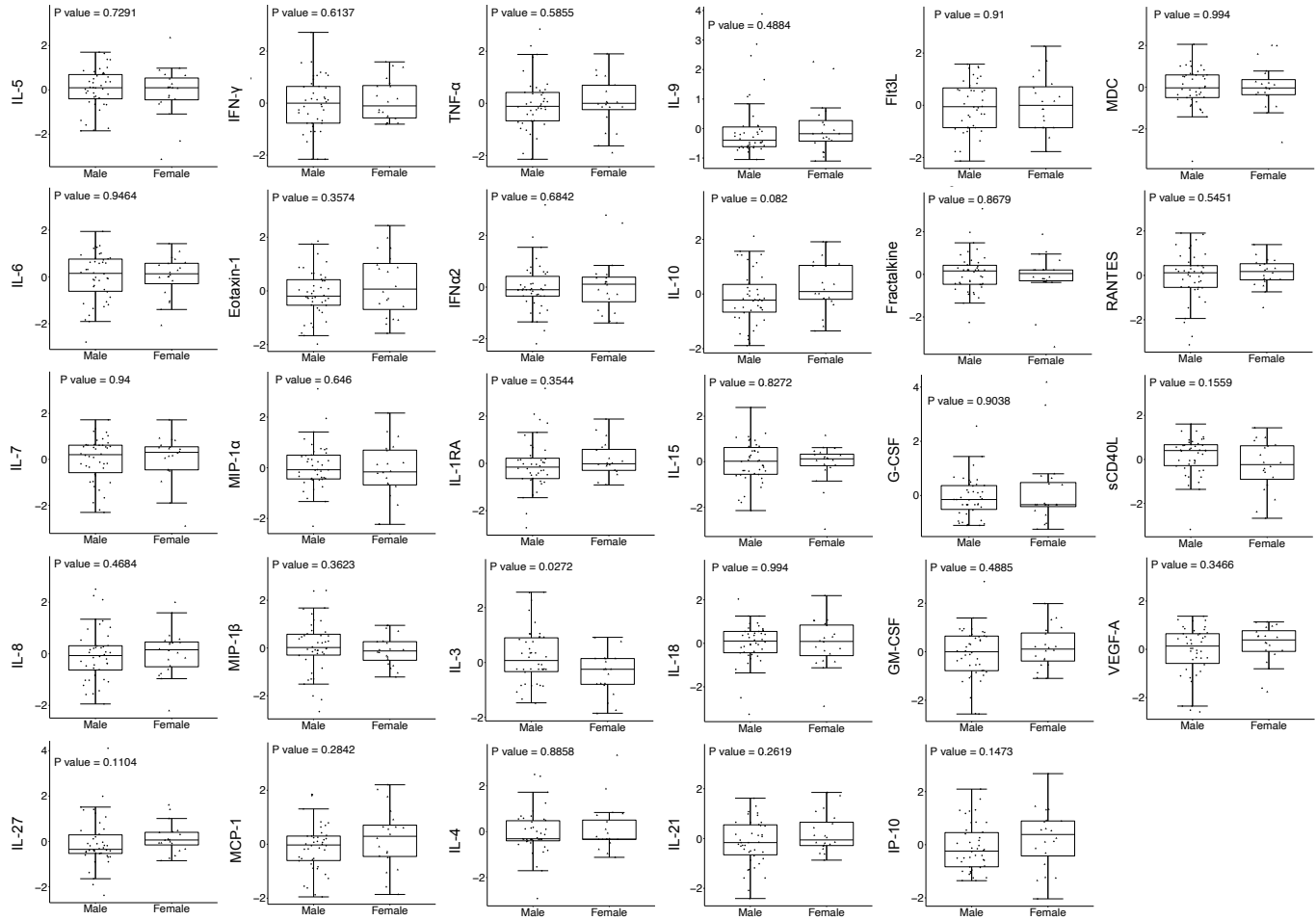
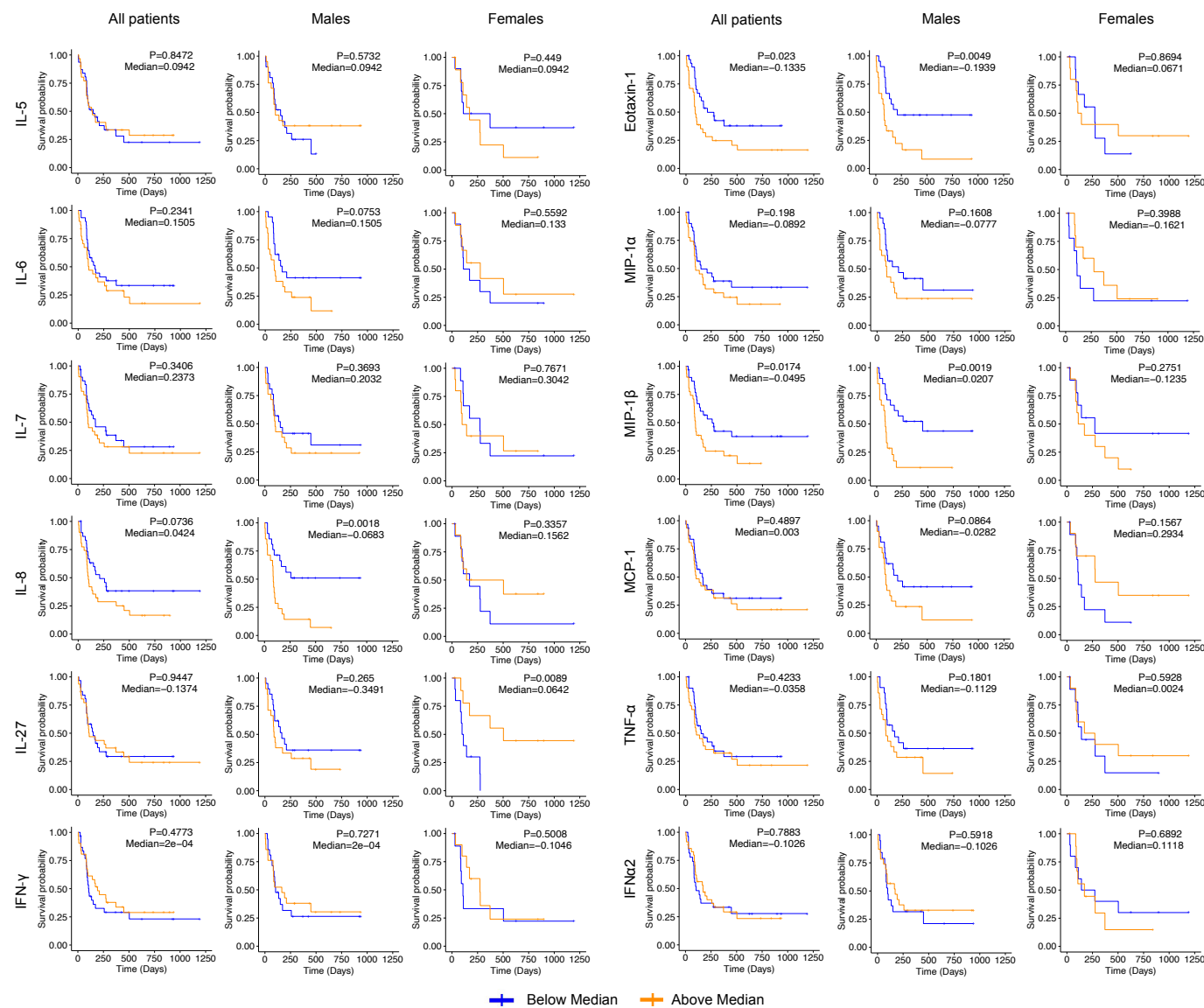


Figure 3



**Figure 4**



**Figure 5**

